

Index*

62.41

=1954=

U S 12
SAWYER
MICHIGAN

Westhauser Nurseries

NEW

EVERBEARING STRAWBERRIES

20th Century

- * QUICK PRODUCER
- * HEAVY YIELDER
- * TOP IN FLAVOR
- * MAMMOTH IN SIZE
- * EASY TO GROW



The One Everbearing Strawberry That Has Everything!

* LARGEST OF ALL

Big-Round-Lustrous Red 20th Century berries have an eye appeal. Unbelievably large berries, measuring up to 5½", not just the first picking but throughout the entire season. Berries are a rich red from the heart out, no green tips as many other everbearers.

* HONEY SWEET FLAVOR

The strawberry with a wholesome honey-sweet flavor everyone will enjoy. Unexcelled for eating out of the hand. The same Honey-Sweetness is retained during freezing. A perfect canning berry. A superior berry for jams or jellies. Imagine shortcakes made from these delicacies on chilly fall days, or that luscious parfait pie on a warm summer day. For a berry with the flavor honeysweet, 20th Century just can't be beat.

* TOP PRODUCER

A record kept of 20th Century planting on a plot 1/30 of an acre or 480 plants, produced 760 pints to November 1, selling at 25c a pint, would bring \$5700.00 an acre. The 20th Century plants have OUT-PRODUCED all other varieties of everbearers. Maximum yield the First year.

* FIRST HARVEST IN 60 DAYS

20th Century starts fruiting 60 days after planting. Enjoy fresh strawberries until the snow flies. Have berries for market when no other berries are ripening. The pride and joy of the home gardner- a money maker for the commercial grower. Always a sell-out. If there's a market there's a demand for 20th Century.

* EASILY GROWN

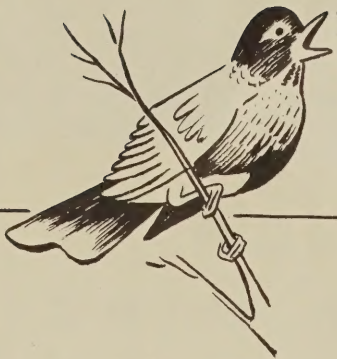
20th Centuries have no soil preference- clay loam to light sand, you are assured of a good fruiting row.

Don't delay - Order Today.



Yum! Yum! 20th Century

PRICES Postpaid		
25	50	100
\$2.95	\$5.00	\$9.25
Not Postpaid		
250	500	1000
\$22.00	\$40.00	\$75.00



Greet Spring with... SPRINGBEARING

Popular Varieties
For Home
and Commercial
Growers

ROBINSON

A great contribution to the Strawberry industry. It's sensational! Glossy, scarlet red to the heart. Juicy with a sweet, mild flavor. Giant size, conical shaped. Introduced right here in the Heart of the Fruit Belt. Being a fancy berry, it is the buyer's delight. Premium prices are paid for this early bearer. Include Robinson in your planting this year. Reap big returns next spring. Abundant crop- ripens early, few days after the Premier, lasting over a long fruiting period, holding its large size to the last picking. A firm berry- excellent shipper.

No berry has ever surpassed Robinson for canning, preserving, and fresh frozen.

Nutritious, delicious for Strawberry shortcake. No doubt the fanciest and most attractive berry ever introduced.

Thrifty plant maker, Robinson places its runners profusely and makes the ideal picking row. **For prices, see bottom of page 3).**

TEMPLE

A splendid new variety, with a host of good qualities. One of the first to ripen hence early cash profits. Not choosy about the soil, grows on practically any type, even does well on moist poorly drained soil, and is equally successful on higher upland soils. Home gardeners will welcome this fine easy to grow variety. Excellent fresh or canned. Put some in the deep freeze for that quick dessert with a taste appeal. Temple is definitely a good commercial berry. Ranks among the first in productiveness. Solid enough for long distance shipping. The attractive appearance of this medium to large, early, bright red berry brings top prices. Unlike many fine products it is not lacking in flavor; in fact it is tops in flavor and quality. Exceptionally vigorous grower, frost resistant, makes plants freely, suggest you space it 18 to 24 inches apart in the row. Don't wait- order now.

(See prices in block at bottom of page 3).

FAIRLAND (USDA 3205)

Fairland is outstanding in many fine respects, but its paramount feature being DISEASE RESISTANT. Healthy, vigorous grower. Heavy dark green foliage protects the flowers borne on short stalks, making it frost resistant also. Equals premier in productiveness. Medium to large, bright red berries have a glossy finish. Ripens uniformly a few days earlier than premier, and is somewhat firmer. Flavor slightly tart. One of the finest for fresh freezing.

(Prices in block at bottom of page 3).

CATSKILL

An outstanding variety for freezing. With home freezers becoming so important in many families, catskill has also become more important. This Strawberry freezes well, comes out of freezing rich in color and flavor, and retains its form. Catskill is the nation's No. 1 midseason berry. It is one of the most productive varieties ever introduced. Plants are vigorous and healthy. The berries are very large and uniform in shape. Not only is the yield of Catskill greater than most leading varieties, but it produces a larger quantity of Big Berries, and keeps on bearing as long as some of the later varieties. (Prices in block at bottom of Page 3).

PREMIER

A favorite from coast to coast for over twenty years. It is the all-purpose Strawberry. One of the earliest to ripen. This alone makes it a prize money-maker. The berries are large, beautiful red, very firm, fine texture and outstanding flavor. Premier holds its size to the last of the season. Excellent for freezing, canning, eating fresh, also superb jam maker. Stand up well under long distance hauling. Big Yields! Sturdy, long-rooted plants, drought resistant. Makes a good fruiting row on any kind of soil. In some of the commercial Strawberry growing sections it is grown exclusively and deserves all its popularity. Home gardeners like it too. Get started right- Buy Westhauser's plants; Big savings on quantity lots.

(See block on bottom of page 3 for Prices).

BARGAIN COLLECTION	
OF SPRING BERRIES	
25 Robinson . . . \$1.35	FOR ONLY 3.55 Net
25 Sparkle1.50	
25 Temple1.50	
Total . . . \$4.35	No Discount
DOUBLE COLLECTION \$6.25	

Westhauser's STRAWBERRIES

HERE IS A WEALTH
OF VITAMINS
IN STRAWBERRIES

● **RED CROP**

A new mid-season variety, introduced by New Jersey Experiment Station in 1950. Growers have proven its yield to be above average. Berries are medium in size, very uniform, holding its size throughout picking season, and firm which makes Red Crop an excellent shipping berry. The bright red color goes throughout the berry, leaving no hollow center.

Red Crop is one of the best berries for freezing, holding its color and shape. Its sweet rich flavor makes it ideal for eating fresh.

Through many tests of Red Crop, it has indicated a resistance to red stele disease. Plants are very hardy, making a good fruiting row. We recommend this berry very highly for the Northern States.

(For prices see block at bottom of page.)

● **DUNLAP**

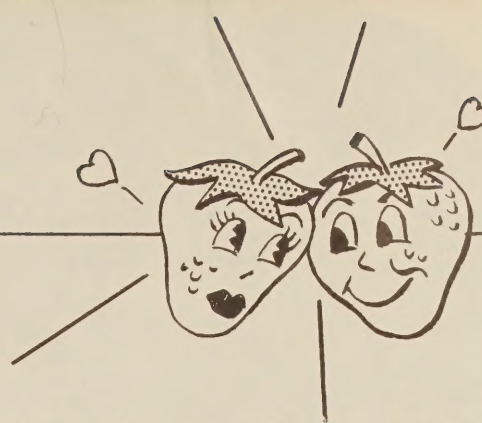
The old favorite and well it should be, for with a small effort, The Dunlap will greatly repay you. One of the most dependable midseason to late berry. The fruit is medium to large, conical and often slightly necked; a beautiful dark crimson, with deep red flesh. Berries are fine fresh from the vine and especially outstanding for canning. Flavor is sweet and delicious. The plants are healthy and vigorous, very productive. Dunlap grows on all types of soil, stands up well in dry weather and makes a good fruit bed under adverse weather conditions. Adaptable to extremely cold climates. The berries hold up a long time after picking making it possible to be shipped to far distances. Comes into bearing a few days after Premier.

(See block at bottom of page for Prices.)

● **FUJIYAMA**

This berry was originated in the Orient. It is the largest Strawberry ever grown. Many berries measure over seven inches around and weigh up to two ounces. These large, sweet, delicious berries are excellent for home use. Fujiyamas can be sold on the nearby Markets but are almost too large for long distance shipping. Makes a beautiful plant and picking row. Plants are very productive. Ripens midseason to late and holds its size well until the end. Try a few of the Fujiyamas in your garden this year and you will be delighted with this berry for your home use.

(Prices in block at right.)



● **SPARKLE**

Outstanding midseason Strawberry. Ripens about ten days after the Premier. Sparkle is truly a beauty. Its glossy, rich red coat fairly sparkles.

Berries are of fine quality, round, medium large, firm, solid red color throughout. An excellent berry fresh or preserved. Sparkle is rated very high for quick freezing. Sparkle has a vigorous, healthy plant growth, an excellent plant maker. They have proven in test plots to be very productive, ranking along with Premier and Catskill at their best. Introduced by the New Jersey Experiment Station, where it is a very popular berry, the Sparkle does well anywhere. This variety is highly resistant to red-stele.

Few varieties can claim as many fine characteristics as the Sparkle. Order yours today.

(For prices see block below)

● **GRAND CHAMPION**

All its name implies, Truly a "Champ". Bears over 40 days. No finer quality at any price. It's an exclusive Westhauser introduction -well deserving of its ever-increasing popularity. The extra large, bright rich red berries are unusually attractive. Really in a class by themselves for flavor, fresh or preserved. They retain their shape and flavor in the can. They are coreless. Put some in your deep-freeze so you can enjoy their delightful goodness long after the season is past. Crop failure on account of frost, practically impossible, as the tall mass of foliage protects the blossoms from late freezes. Heavy producer. During harvesting we picked over 1920 quarts from one-seventh of an acre-the equivalent of 13,400 quarts per acre. Try some. You will be amazed at this wonderful berry.

(Prices in block at bottom of page.)

STRAWBERRY PRICES

	Postpaid			Not Postpaid		
	25	50	100	250	500	1000
ROBINSON ..	\$1.35	2.30	3.50	\$6.00	9.45	15.20
TEMPLE ...	1.50	2.55	4.00	7.50	11.90	19.00
FAIRLAND ..	1.50	2.50	4.00	7.50	11.90	19.00
PREMIER ...	1.45	2.50	3.90	6.75	9.75	17.50
CATSKILL ...	1.50	2.55	4.00	7.50	11.90	19.00
RED CROP ...	1.55	2.85	4.30	8.25	13.20	21.50
DUNLAP	1.35	1.83	2.90	4.75	8.00	13.50
FUJIYAMA ..	2.75	4.55	8.15			
Grand Champ	2.25	4.05	7.15	14.50	23.00	
SPARKLE ...	1.50	2.55	4.00	7.50	11.90	19.00



Westhauser's

IMPROVED HEAVY-YIELD

The advantages of growing

Westhauser's plants are all hardy northern grown. These plants have withstood Michigan's changeable climate. These plants have been tested on various grounds. All plants have proven a success before we list them.

WHEN BUYING, ENJOY THE BEST

RED RICH

Patent No. 993

Red Rich, a cross between Wayzata Everbearing and Fairfax Spring bearing has retained the good flavor of Wayzata and the high yielding ability of Fairfax. Produces 2 crops in one year. Berries are large rather round, rich red color that goes all the way through. A firm berry, ships well. Excellent plant maker. Strong, healthy, vigorous growers. Popular Red Rich, the berry you have to try to appreciate. **PRICES: 25 for \$5.00; 50 for \$8.50; 100 for \$15.00 Postpaid, 250 for \$32.50; 500 for \$55.00 Not Postpaid, Net, no discount.**

BRILLIANT

Patent No. 1183

Have you tried Brilliant? It is one of the newer varieties of everbearing strawberries. Brilliant is a quick bearer. Plants are thrifty and vigorous, doing well on almost any type of soil, or under adverse weather conditions. A fine producer, holds an official record of 7,000 quarts per acre. Rich, tangy flavor that you will love from the very first bite. The glistening brilliant red color, penetrating throughout the entire berry, is most attractive in dessert or package. The tasty and juicy flesh is of firm texture and solid throughout. Fine for preserves and tops for freezing. **PRICES: Postpaid, 25 for \$3.25; 50 for \$5.75; 100 for \$9.95, Not Postpaid, 250 for \$21.45; 500 for \$42.85.**

STREAMLINER

A Speed King Special in sales. Streamliner plants produce honey-sweet, super sized berries. Gives you three enormous crops in 18 months, and will grow anywhere. This outstanding everbearer has all the good points. It is large, uniform, firm, red to the core with even coloring throughout, no green tips—even the fragrance is enticing. Plant in April or May and have luscious fresh strawberries in July or August; continuous yield until the snow flies, as well as a full crop the following Spring. The Streamliner Strawberry is very hardy, stand 30 degrees below Zero weather, is adapted to a wide range of soil from Clay to sandy loam. The plants are large and extra heavy rooted—an excellent plant maker. The berries are firm, hold their shape and color when shipped long distances, demanding top prices. Have Strawberries the year round. Excellent frozen, super for jam or jelly, or just preserve a few. You'll like them. **PRICES: Postpaid, 25 for \$2.25; 50 for \$3.75; 100 for \$6.00; Not Postpaid, 250 for \$11.00; 500 for \$20.00; 1000 for \$35.00**

HERE'S A MODERN INNOVATION



NOW!

For Bigger, Firmer, Better Flavored berries; for more enjoyment and greater value from your berry patch—**SPRAY WITH BERRY SET.**

PRICE:

3-oz. pkg., \$1.00

12 oz. pkg. \$3.00.

No disc.

"A Product of Science"

BERRY-SET

A HORMONE SPRAY FOR BIGGER BERRIES!



JUST SPRAY THE BLOSSOMS

BIGGER MORE LUSCIOUS LONGER BEARING

STRAWBERRIES

Raspberries, Blackberries, Hollyberries

Manufactured by
SCIENCE PRODUCTS COMPANY - CHICAGO 37

**50 TO 100%
LARGER BERRIES**

Everbearing STRAWBERRIES



Westhauser's Everbearers

Grown in good clean soil
 Fertilized for necessary nutrients
 Irrigated for needed moisture
 Kept clean to assure proper growth.
IT COSTS YOU NO MORE

● SUPERFECTION

We can't begin to tell you all the fine qualities of Superfection. The large, round berries are bright red all the way through. The tempting, sweet, mellow flavor is delicious fresh, canned or in jams and jellies. You will want to put some in your deep freeze for that extra special treat this winter. Fruit is firm. Plants are sturdy. Heavy producer. Free plant maker. Plant Superfection for perfect satisfaction.

For prices, see block at bottom of page.

LONG SEASON EVERBEARING COLLECTION

25 Brune's Marvel\$2.35
25 Superfection2.25
25 20th Century2.95

**75 Plants
for only \$6.35**

Value7.55
SAVE1.20

Postpaid
Net, No Discount

Double Collection for Only \$11.00, Net, No Discount

IN STRAWBERRY PLANTING

The picture at the left is an actual planting at our Nursery featuring an unique yet a most attractive and convenient way to grow strawberries. As you will note, these plants were used as an edging along the walk and as a formal planting in our landscaping.

You, too, can add to your landscaping plans to include a profitable planting such as the Everbearer Strawberry. These plants will produce blossoms and fruit all summer long. The heavy green foliage of the plants contrasted with the white blossoms and later bright red berries is most attractive.

Imagine, going out on the front lawn and picking your own Lucious berries. So convenient for the housewife. So enjoyable for the children. And of course Father will point to them with pride.

Even after frost in the fall, the bright red leaves which Jack Frost colors will add a distinctive touch to any planting. (20th Century Everbearer used in this planting)

● GEM

GEM The favorite for over a decade

Tops in flavor, appearance, production, hardiness. Commercial growers praise Gem for its unusually good crop in spring, and its bountiful production in fall when Strawberries are in the luxury class. The flavor is sweet like the Progressive variety—so little sugar needed to bring out the rich flavor. The glossy, scarlet-red berries are most attractive. Fruit is very large and uniform, holding its size even in dry weather. Good shipper. Produces heavy fruiting row. **Double your crop—increase your profit. Plant our heavy fruiting strain. Prices in block at bottom of page.**

● BRUNE'S MARVEL

- * Non-Acid
- * Unusually Sweet
- * Everbearing
- * Thrifty Plant Maker

A berry all can eat. If you are one who is effected with rash caused by acid of other strawberries, try the Brune's Marvel. These berries can be eaten with no ill effects. The unusually, sweet, large red berry is almost seedless.

(See block at bottom of page for prices)

POLLENIZATION - All varieties of Westhauser's Strawberries are self-pollenizing. However, the smart grower will order a varied assortment and prolong his berry season.

TOP NOTCH Collection

25 Streamliners\$2.25
25 20th Century 2.95
25 Gems 1.90
	<hr/> 7.10

**For only \$5.50 Postpaid
Net, No Discount**

50 Streamliners\$3.75
50 20th Century 5.00
50 Gems 2.85
	<hr/> 11.60

**For only \$9.60 Postpaid
Net, No Discount**

<u>Prices</u>	<u>Postpaid</u>	25	50	100
Superfection	\$2.25	\$3.75	\$6.00
Gems	1.90	2.85	4.90
Brune's Marvel	2.35	4.00	7.00
Not Postpaid		250	500	1000
Superfection	\$11.00	\$20.00	\$35.00
Gems	9.00	15.65	29.95
Brune's Marvel	11.75	22.00	



Westhauser's

BLUE

NORTHERN
GROWN

BEAUTIFUL . . .

PROFITABLE . . .

BERRIES GROW "BIG AS NICKELS"

Best Investment of a Lifetime for Enjoyment and Profit. **Great big, Juicy, Hybrid Blueberries** are a joy to eat. Use them fresh or cooked. Tasty and colorful in desserts or salads—in muffins, Yum! Yum! They are mighty good fresh frozen, and for something delightfully different, can them with a few spices, a dash of cinnamon, a bit of whole cloves, etc., like you do your spiced Peaches.

GIANT HYBRID BLUEBERRIES are a pleasure to pick. The bushes grow 6 to 8 feet high. Berries are 2 to 3 times larger than common Blueberries, so compact they actually resemble a bunch of Delaware Grapes. Start fruiting in July, continuing on to September. Blueberries hang on the bushes exceptionally well after maturity, better than most small fruits, so that picking once a week is usually often enough.

AVERAGE YIELD for full bearing plants under good conditions is from 2000 to 3000 quarts per acre, although occasionally much higher yields are obtained. Rich harvests ranging from \$1,000 to \$1,500 per acre are not uncommon. It's the commercial grower's dream come true.

CROSS POLLENIZATION: At least 2 plants should be planted together for cross pollenization. Can be same variety. This insures more and larger berries.

BLUEBERRY SPECIALS

- | | | |
|----------|---|--------------|
| 3 | 3-yr. Blueberries with Ample Gro-Kwick for planting
Net, No Discount | \$265 |
| 5 | 2-yr. Blueberries with Ample Gro-Kwick for planting
Net, No Discount | \$290 |
| 4 | 4-yr. Blueberries with Ample Gro-Kwick for planting
Net, No Discount | \$650 |
| 3 | 5-yr. Blueberries with Ample Gro-Kwick for planting
Net, No Discount | \$775 |
| 6 | 4-yr. Blueberries with Ample Gro-Kwick for planting
Net, No Discount | \$950 |

FOR QUICK RESULTS

PLANT GIANT 7-YR. OLD Westhauser's SELECTED STOCK

Loaded with fruit buds, well on its way to full maturity. Will bear crop the first year, often paying more than cost of plants. 7-year. **PRICES: 2 for \$7.50; 4 for \$14.00; 10 for \$32.50**

Westhauser's GRO-KWICK

Activate your soil with Westhauser's Gro-Kwick. Ideal for Blueberries—excellent for house plants. Does wonders for shrubs and flowers. Better results from all your plantings.

Clean, odorless, highly vitalized—consists of humus, nitrogen, phosphate and other minerals. Holds 15 to 20 times its own weight of water. Mix one-fourth Gro-Kwick with soil when planting and get better results. Shipped to you in strong useful **PLASTIC BAGS** so handy for the refrigerator or deep-freeze, as purposeful as the peat itself. **PRICES: 1 bag, (1/2 pk.) 49c; 2 bags (1 pk.) 85c.** If ordered separately allow 45c per bag for postage.



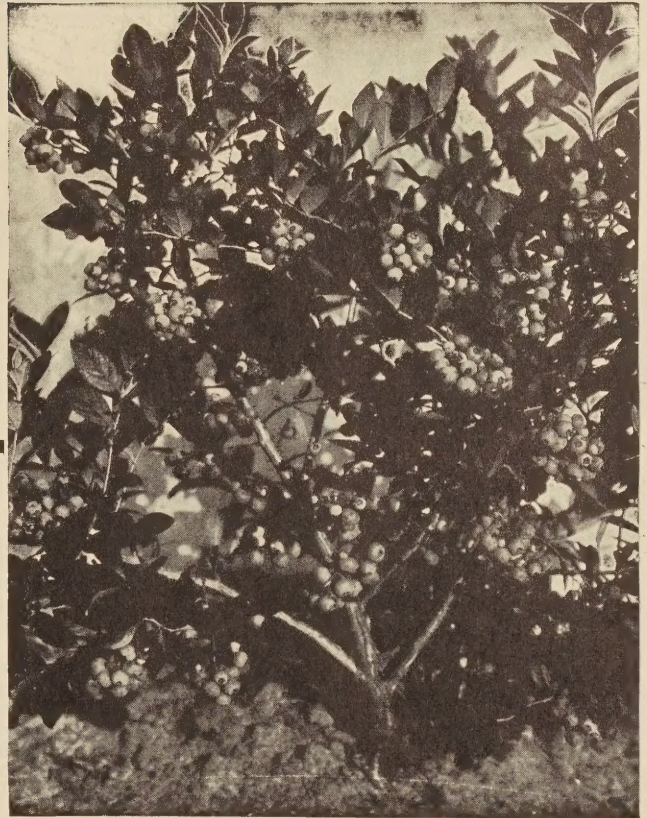
GIANT HYBRID BERRIES

ORNAMENTAL

LASTS A LIFETIME

FOLKS!

Blueberries deserve a place on your grounds. No replanting in a few years—once planted, they last a lifetime, and need very little attention. Use them in your landscaping—surpassed by none as an ornamental. Lovely in spring with pink bell-shaped blossoms. All summer their heavy foliage is highly polished bright green, in autumn the leaves turn a gorgeous coppery red. These disease-free plants can be easily trimmed, making beautiful hedges or group plantings. Along with their beauty comes production. What a pleasure to pick fresh, large, juicy Blueberries from your own bushes—beautiful to look at—delicious to eat. Could one ask for more?



BEARING AGE PLANT

HOW TO GROW BLUEBERRIES SUCCESSFULLY

Make an opening three or more times larger than the roots, large enough to receive all the roots without crowding. Mix the dirt removed from holes, half and half with Westhauser's Gro-Kwick Acid Peat, or some acid material such as decayed leaves, rotten straw or vegetable refuse, firm this well around the roots of the plants. We recommend that a handful of sulphur be put around each plant in the spring. Give the one-year plants one-half ounce of Sulphate of Ammonia, for the older plants increase one-half ounce for each additional year. Do not let the Sulphate of Ammonia get in contact with the foliage. This can be purchased at your local feed store, and is very inexpensive. Space plants 4 to 5 feet apart in the rows, and the rows 8 to 10 feet apart.

PRICES ON SELECTED HYBRIDS

	2	4	10	25	100	250
2-yr..	\$1.50	\$2.50	\$6.10	\$14.50	\$52.50	\$125.00
3-yr..	2.40	4.25	9.00	21.00	75.00	
5-yr..	6.50	12.00	27.00	48.00	125.00	

LEADING VARIETIES

↓ RUBEL

Early bearer. Very hardy bushes, producing large, uniform berries beginning in early July. Has a long fruiting season.

↓ RANCOCAS

Midseason bearer. One of the oldest Blueberries. Ideal berry for home use.

↓ JERSEY

Giant of the Blueberry family. Bears giant, sweet berries very late in season. Plant all three and prolong your fruiting season. Blueberries are very easily grown, but like an acid soil. All Blueberries are packed in Gro-Kwick, a nitro-organic humus. Use it in planting your berries. For additional Gro-Kwick, see description and prices page 6.

SIZES

2-year, heavy rooted transplants, well branched.

3-year, heavily branched canes with well-established root systems, setting of some fruit buds.

5-year loaded with fruit buds, and well-branched plants, extra heavy root systems. Will bear a crop the first year.

ANOTHER NEW DEVELOPMENT RECENTLY RELEASED

the **EARLY RED**



**RIPENS
EARLY**

**BEARS
LONGEST**

**EXCELLENT
FLAVOR**

LIMITED NUMBER OF PLANTS
AVAILABLE ORDER YOURS EARLY

As its name suggests Early Red ripens early in the season. The lustrous red berries are large, rather round and firm. Excellent flavor. Very productive. Bears over a long fruiting period. Retains its good color, shape and flavor in the canning process. Freezes as well as the Latham. Outstanding shippers. The plants are upright, tall, hardy, vigorous growers.

Early Red was developed by the Mich. Ag. Experiment Station at So. Haven, and was released only after a ten year commercial test. Positively tops for home and market.

Early Red PRICES:

	3	6	12	25	50	100	250	500
1-yr.	\$1.15	2.00	3.75	7.00	13.00	25.00	60.00	115.00
2-yr.	1.75	3.00	5.00	9.00	17.00	33.00		

the ever popular **LATHAM**

Latham is the leading medium to late commercial variety. For extra value plant Westhauser's dependable proven strain. Home gardeners everywhere are delighted with the fine qualities of Latham. It thrives on all well-drained soil, produces heavily in all localities. It is very hardy, does not winter-kill even at 45 degrees below zero. Berries are large, plump and sweet. It is not uncommon for them to measure an inch in diameter. Color is a beautiful rich dark red. Berries carry well in shipping. The rich coloring of these firm, fancy berries makes an attractive package, buyers are so eager to get them, they pay as much as 50c more per crate. Folks, there is nothing more delicious than Raspberries fresh from your own garden. Saves on the food budget too. Sell any surplus to your friends and neighbors. For pies, shortcake, sauce, jam, freezing, or fresh juice, they are delicious. Include Latham in your planting this year.

PRICES:

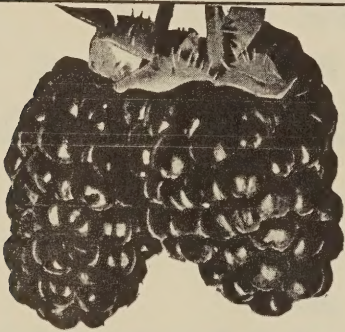
	6	12	25	50	100	250	500	1000
Latham 1-yr.		\$1.95	3.50	5.75	11.00	25.00	45.00	80.00
Latham 2-yr.	\$1.75	2.85	4.95	8.75	15.00			

THE STARTLING **GOLDEN QUEEN**

This rich, golden yellow Raspberry, while very novel indeed, is often grown in preference to the red and black Raspberries, because of its sugar-sweet flavor. Berries are large. Plants are vigorous growers and immense producers. Plant a variety of Raspberries, we know you'll like the Golden Queen. PRICES: 2-yr., bearing age, 3 for \$1.75; 6 for \$2.75; 12 for \$5.00.

For illustration see page 17.

Westhauser's NEW and FAVORITE BLACKBERRIES



NEW AMAZING **EBONY KING**

Guaranteed to bear! Very large-glossy jet-black fruit ripens early on these vigorous hardy plants. A new berry originated in Michigan withstands some of the coldest weather with no signs of disease. Order early - - supply very limited.

Prices: 1-yr., 6 for \$1.95; 12 for \$3.75; 25 for \$7.25; 50 for \$13.50; 100 for \$21.50.

EVERBEARING BLACKBERRY

A new large jet-black berry with a fine spicy flavor, honey-sweet, few small seeds and no core. The plants are drought and disease-resistant. Supply limited. Order now PRICES: 2-yr., extra heavy bearing age, \$1.25 each; 3 for \$2.50 6 for \$4.75.

ELDORADO

Best late Blackberry. Bears young, almost a full crop the first year. Sparkling jet-black berries are large, sweet, uniform in size, do not turn red after picking.

ALFRED

The practically coreless Blackberry originated in Michigan. A hardy plant, that produces mammoth berries of jet-black color and sweet delicious flavor, does well in cold sections.

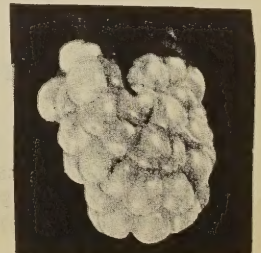
ELDORADO and ALFRED PRICES

	6	12	25	50	100	500	1000
1-yr.	1.75	2.60	3.90	6.00	10.75	35.00	66.00
2-yr.	2.50	4.00	7.00	12.00	19.00		

CRYSTAL WHITE BLACKBERRY

Creamy white, honey-sweet Blackberries. Fruit is about the size of the Alfred, with few seeds. Bushes are good strong growers and very productive. For a novel dessert combine Crystal white and jet-black berries.

PRICES: 2-yr. 55c each; 3 for \$1.50; 6 for \$2.50
3-yr. 70c each; 3 for \$2.00; 6 for \$3.50



The Newest Sensation

IN RED RASPBERRIES

DURHAM!



**YIELD YEAR AFTER YEAR
DOES NOT WINTER KILL!
SETS FRUIT ON NEW WOOD YEARLY**

GIANT EVERBEARING INDIAN SUMMER

Two crops in one year. When partaking of some choice deliciously flavored fruit, have you not often wished it would last longer? INDIAN SUMMER is your berry. It is one of the first to ripen, bearing a full crop in June-- another immense crop in the fall. The berries are mammoth conical shaped with small cavity, deep red color and highly flavored. The plants are hardy, tall and thrifty, requiring little care. In production, Indian Summer will equal and outbear other Red Raspberries. A real treat fresh, canned, or frozen, Attention Commercial growers! Indian Summer are good shippers. Get premium prices for Raspberries out of season.

DOUBLE BEARING DOUBLE PROFITS.

Indian Summer Prices

	1-yr.	2-yr.
6	\$1.50	\$1.85
12	2.55	3.00
25	4.50	5.25
50	7.50	9.50
100	13.90	18.00
500	50.00	75.00

A 3-COLOR Special

3-Dundee 2-yr.
3-Indian Summer 2-yr.
3-Golden Queen 2-yr.

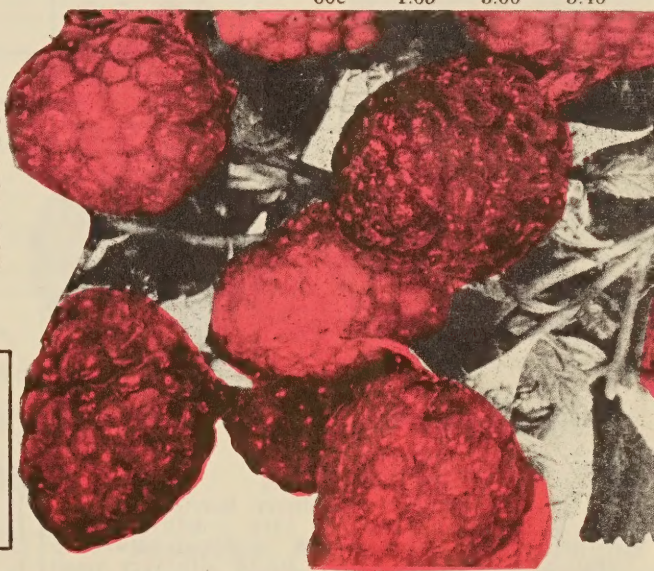
Only **\$3.00** Net.

A new red raspberry that is truly everbearing. Durham begin to bear in early summer, producing a bumper crop on old canes, then in only a few weeks start bearing on new canes. After starting on the new canes, Durham bear constantly until freezing.

The fruit is large, very attractive red color, a firm berry, of excellent quality, especially fine for preserves and freezing. Durham have a sweet mild, true raspberry flavor which make them ideal for eating fresh. The canes grow from three to three and one half feet in height, making them ideal for picking. The Durham plants are very productive, one of the hardest of raspberries-- a healthy and vigorous grower.

Durhams deserve a place in your garden. They soon pay for themselves. No greater pleasure than picking fresh berries from your own garden and later viewing those luscious berries piled high on a delicious shortcake or an ice cream sundae.

DURHAM PRICES:	Each	3	6	12
1-yr. plants	45c	\$1.20	\$2.10	\$3.70
2-yr. plants	60c	1.65	3.00	5.40



Here's a Westhauser EXCLUSIVE an "Easy Pickin'"

THORNLESS RED RASPBERRY

EARLY WONDER

Sturdy, upright grower having a smooth wood, no stickers, very productive, ripening about ten days earlier than the Latham. What more could you ask for? Yet it has more. The attractive appearance of the immense berries borne in beautiful, dazzling, bright red clusters, makes Early Wonder a best seller. Very firm-- do not crumble. Excellent shippers. Their pleasing flavor--truly a delicacy fresh, canned, or frozen, makes them a housewife's favorite.

This variety was discovered here in the heart of the fruit belt, several years ago by Mr. Henning, who found it growing in a patch of Latham. Now, he, as well as many other wide-awake farmers, grow this Thornless Red Raspberry exclusively. Early Wonder is a combination of tested and proven merits.

PRICES:	Each	3	6
2-yr Fruiting Size	\$0.75	\$2.10	\$4.00
Giant 2-yr. Plants	1.00	2.75	5.00

BE SURE WITH WESTHAUSER'S NORTHERN GROWN STOCK



Westhauser's BLACKCAPS

The New Improved DUNDEE

The Blackcap that is coming into the CHAMPIONSHIP CLASS! Throughout the Raspberry growing states it is getting to be the prevailing berry. It ripens from five to seven days ahead of the Cumberland, producing a very firm deep black berry. It never fails to produce a bumper crop, and in many cases will outbear the older varieties at least two to one. The berries are exceptionally firm and sweet with few seeds, so large it takes only a few for a rich luscious, tempting, mouthful. Excellent for freezing, canning; delicious for jams and jellies. We believe the Dundee is the most disease resistant Raspberry that we have ever grown. It produces in any type soil, Raspberries of today. (Prices below).

CUMBERLAND

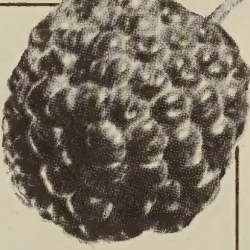
The Leading Commercial Blackcap- Get the most for your money, plant Westhauser's heavy producing Cumberland, one of the foremost, most dependable of all Blackcaps. Does exceptionally well in all climates. Produces biggest cash crops. Buyers pay top prices for this beautiful, most attractive, large jet-black Raspberry. The seeds are comparatively small and their luscious, sweet, rich, tempting flavor make them a favorite to eat canned or fresh. Delicious fresh frozen. Will grow and thrive excellently on any kind of soil. It is the firmest of all Blackcaps, does not crumble, holds its size to the end better than any of the Raspberries of today... (Prices below).

Cheaper by the Dozen Collection

12 Cumberland. 1-yr.	} ONLY
12 Morrison. 1-yr.	
12 Dundee. 1-yr.	

\$3.90 Net
No Discount

S O D U S P U R P L E C A P



The leading purple Raspberry. Berries are large, firm and when fully ripe have a delicious, mild sugary flavor all their own, "a blend between a black and red raspberry." Meaty with very small seeds. Vigorous, productive, hardy. Order now, supply limited. Prices: 1 yr. No. 1, 3 for 90c; 6 for \$1.50; 12 for \$2.75; 25 for \$4.50. 2-yr. heavy rooted, \$1.00 each; 3 for \$2.75; 6 for \$4.75.



ELEPHANT SIZE J U M B O M O R R I S O N

You will be attracted by all the unusually fine qualities of this outstanding Blackcap- the mammoth sized berries, glistening jet-black color, rich flavor, so few seeds, heavy producer. Berries even larger than Cumberland, measuring up to an inch in diameter, hold their size to the last picking. The thrifty, strong hardy plants are heavy rooted and disease resistant. Easy to grow. Morrisons are excellent for canning, jam, and juice, as well as fresh and fresh frozen. Prices Below.

THRIFTY COLLECTION

3 Cumberland. 2-yr.	} FOR ONLY
3 Morrison. 2-yr.	
3 Dundee 2-yr.	

\$2.65 net

BLACK RASPBERRY PRICES		6	12	25	50	100	250	1000
Cumberland, 1-yr.		\$1.50	\$2.15	\$3.75	\$ 6.50	\$14.75	\$48.50	
	2-yr.	\$1.85	3.00	4.95	8.95	15.35		
Morrison & Dundee	1-yr.	1.80	3.25	5.25	9.00	21.00	65.00	
	2-yr.	2.40	3.85	6.25	10.50	18.50		

ENJOY THE BEST - Order from Westhauser's

For a Big Profit

GRAPES

For a Sure Crop

NIAGARA

The leading commercial White Grape. The compact bunches of large, fine-flavored, juicy berries are in big demand for table and wine. Very productive and hardy. Ripens about the same time as Concord. (Prices below.)

FREDONIA

This new variety threatens to displace all other black Grapes. A new, very early Grape, originated and thoroughly tested by the New York Experiment Station. The clusters and berries are large, with excellent flavor. Ripens fully 10 days before Moore's Early. Excellent shipper, does not crack. This Grape fills a long-felt need—a juicy, delicious black Grape that ripens early. Vine vigorous and productive. One of the best new varieties. (Prices below.)

CONCORD

Most popular Grape for eating, table use, wines, jams, jellies and commercial. Grows on all kinds of soil, and produces larger crops. The bunches are large, compact and well-shaped; berries are dark blue and very juicy. Plants are exceptionally hardy. Fruits in October. Here in the heart of the Fruit Belt thousands of truck loads are shipped annually. Order now. Stock is short. (Prices below.)

PRICES FOR CONCORD, NIAGARA, and FREDONIA

	1-Year	2-Year	3-Year
3	\$ 1.20	\$ 1.50	\$ 2.10
10	3.25	4.00	6.50
25	6.75	8.25	14.00
50	11.25	14.00	26.00
100	18.00	22.00	

Quick-Fruiting Fancy Grape Collection

- 1 Caco, 3-yr., bearing age.
- 2 Fredonia, 3-yr., bearing age.
- 1 Golden Muscat, 3-yr.

\$2.69 Net, No Discount

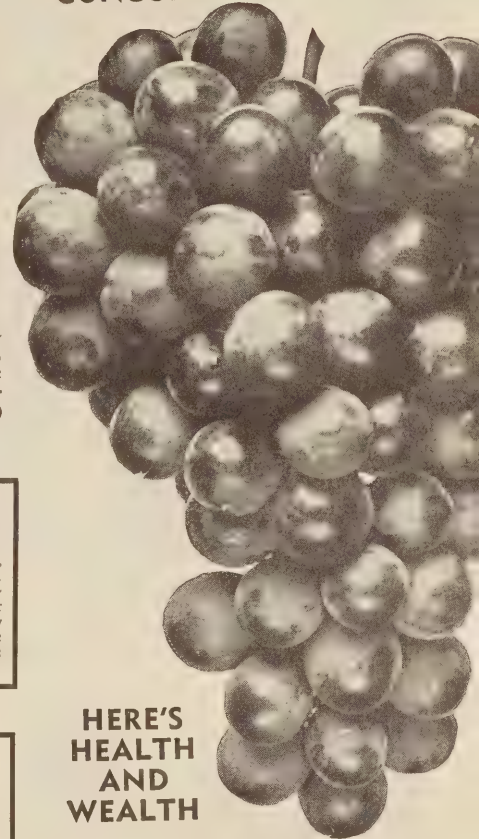
CACO

This variety is considered the best and hardiest amber-red ever produced, the bunches being very large and the berries comparable to the new Fredonia. In quality Caco ranks among the best of the native Grapes approaching in flavor European Muscat rather than the foxiness of native Grapes. PRICES: 2-yr., 3 for \$1.50; 10 for \$4.00; 25 for \$8.25; 50 for \$14.00; 100 for \$22.00. 3-yr., 3 for \$2.10; 10 for \$6.50; 25 for \$14.00; 50 for \$26.00.

GOLDEN MUSCAT

This new hardy, California type Grape can be grown in every section of the country. Berries are large, sweet and meaty. Ideal for home use and roadside stands. Compact bunches are large, heavy, broad shouldered, and tapering. Very productive. Like a fertile soil. PRICES: 2-yr., 3 for \$2.75; 10 for \$8.00; 25 for \$19.00. 3-yr., 3 for \$3.25; 10 for \$9.50; 25 for \$22.00.

CONCORD



HERE'S
HEALTH
AND
WEALTH

Seedless Concord

After years of experimentation and cross-breeding, a perfectly hardy, seedless Grape has been developed. The first of a new race of Grapes that should eventually replace the common large seeded varieties for table use. It is the Concord type, but slightly smaller, blue-black in color and possesses the same fine flavor found in the Concord Grape. PRICES: \$1.25 each; 3 for \$3.00.

Seneca-Skinless

Just a nice tender munch and a sweet, juicy crunch; no skins to worry about—that's Seneca Skinless Grape. It is the newest of the hardy California-type Grapes, and has this important quality of edible skin. Flavor, sweet, melting, delicious; vine vigorous and productive; bunches well filled and attractive. PRICES: \$1.25 each; 3 for \$3.00.

Red-White-Blue

3 Concord, 2-yr. 3 Caco, 2-yr.
3 Niagara, 2-yr.
For Only \$3.60, Net, No Discount
DOUBLE COLLECTION ONLY \$6.75

Mary Washington

ASPARAGUS PLANTS Best for Home or Market

Packed With **VITAMINS** and **MINERALS**

First green vegetable of the season. Vitamin rich, nutritious, delicious Mary Washington Asparagus is the leading variety for home and market. It is rust-resistant, producing crisp, green, compact stalks, often measuring up to an inch in diameter. **First cash crop in spring.** Fancy stalks for the stores and market. The No. 2 grade for canning factories. Fresh frozen food companies have created a large demand for Asparagus. Get started this year with this "full of vitamin" green. Plantings last 20 years or more. 5000 roots will plant an acre.

Asparagus Prices

1-yr., No. 1 strong plants, 25 for \$1.50; 50 for \$2.50; 100 for \$4.00; 250 for \$8.00; 500 for \$12.50; 1000 for \$20.00.

2-yr., strong, thrifty, 25 for \$2.25; 50 for \$3.75; 100 for \$6.00; 250 for \$12.00; 500 for \$18.75; 1000 for \$30.00.

3-yr., extra heavy Jumbo, 12 for \$2.25; 25 for \$4.00; 50 for \$6.75; 100 for \$11.00; 250 for \$22.00; 500 for \$34.00.

Mac Donald Strawberry Red RHUBARB

Attractive red stalk, of large size, productive, very tender and succulent and of excellent quality; particularly valuable for pies and desserts. When cooked, has an attractive red raspberry color. Plants propagated by division. Try some this year.

RHUBARB PRICES

Each.. \$1.00
3 for.. 2.20
6 for.. 3.85
12 for.. 6.50



Mac Donald

PRODUCES 5 DIFFERENT VARIETIES OF EXCELLENT APPLES ON 1 TREE

Quick Fruiting 3-Year-Old Trees

5 N 1

Yes, one tree replaces five. Now that dream of raising your own delicious apples, not just one kind at one particular time, but a continuous supply of eating and cooking apples from summer to winter. An ideal tree for those who do not have much room. With its beautiful apple blossoms, the rich green foliage, and its colorful fruit, this tree is attractive enough to be planted in a front yard. Five varieties have been grafted on a two year old apple tree stock, and left to grow in the field for another year. This one-tree apple orchard bears **YELLOW TRANSPARENTS**, an early apple, wonderful for eating or cooking, perfect for sauce and pies; the all-round **ANOKA**, a favorite of many; **WINESAP**, one of the best winter keeping apples on the market; the apple "Queens", **YELLOW DELICIOUS** and **RED DELICIOUS**, the apples with the delicious flavor, unequalled by any others. The fruit of these apples equals the same high quality of each individual variety.



GIANT SUPERSIZE TREE
 5 N 1 APPLE TREE \$4.50

DWARF SIZE FRUIT TREES

Full Size Fruit Grows On These Trees

APPLE PEAR PLUM



Dwarf McIntosh, Red Delicious, and Anoka.
PRICES: \$3.25 each; 2 for \$5.75.

The same leading Bartlett Pear on a dwarf tree.
PRICES: \$2.75 each; 3 for \$5.95.

Sapa Hybrid Plum tree with a dwarf growing habit, produces juicy, sweet, freestone plums.
PRICES: \$2.25 each; 3 for \$5.95.

DWARF TREES

These hardy, productive trees bear abundantly, more fruit in production than an average tree. They are easy to prune and spray. Fruit is easy to pick. They usually bear the first or second year after planting. Quality of fruit is excellent for eating, preserving and freezing. Extremely attractive during early spring, loaded with gorgeous blooms. An ideal planting for a limited amount of space.

SPECIAL

Miniature Orchard

- 1 Dwarf McIntosh Apple
- 1 Dwarf Bartlett Pear
- 1 Hybrid Sapa Plum

\$6.00
Net, No Discount

DON'T OVERLOOK THESE CHERRY FAVORITES

WINDSOR, SWEET CHERRY

A late variety producing the latter part of July. Valuable for market and desirable for home use. Fruit is large, dark red. Flesh is sweet and firm, very juicy. Resists rot and clings to the tree long. Vigorous, upright, rapid grower.

SCHMIDT, SWEET CHERRY

The best dark Sweet Cherry, and an excellent market Cherry. The fruit is fancy and attractive, keeps well. A deep crimson-red color, heavy producer of extra large, tender, juicy fruit. Production comes midseason. Prices below.

MONTMORENCY

The best and largest sour cherry grown. Preferred by the canners; Preferred by the bakers; Preferred by the home owners. Ripen in mid-July.

Schmidt and Windsor Sweet Cherries

	7/16"	9/16"	11/16"
Each	\$ 1.60	\$ 1.80	\$ 2.35
10 for	15.00	17.00	20.00
100 for	100.00	125.00	150.00

7-9/16" \$1.50 each; 10 for \$14.00; 100 for \$ 70.00
 9-11/16" \$2.00 each; 10 for \$19.00; 100 for \$110.00



Westhauser's

FRUIT

HARDY
NORTHERN
GROWN

TREES



- *PEACHES *APRICOTS
- *PEARS *PLUMS
- *NECTARINES

SEEDLESS

No Seed! No Core! Just juicy, sweet, full flavor, solid white pear all the way through. Large as Bartlett, ripening about 10 days earlier. **PRICES:**

9/16"	\$2.00 each;	3 for \$5.75
11/16"	2.50 each;	3 for 7.50

KIEFFER

Bears early age with abundant and regular large fruit Wonderful keeper, Good for long distance shipping.

BARTLETT

Unexcelled for canning, or eating. The all-around favorite pear. Large, rich golden yellow with a red blush, juicy, rich flavored fruit ripens in August.

BARTLETT & KIEFFER PRICES

	Each	10	100
7/16 in.	\$1.25	\$11.00	\$65.00
9/16 in.	1.50	12.50	80.00
11/16 in.	1.75	15.00	90.00

APRICOT

One of the largest and finest Apricots, a popular favorite. Trees grow a little larger than average peach tree and are as hardy. Fruit, ripening the first of August, has a rich, juicy flavor, superior for canning.

NECTARINE

Fruit with shape and size of a Peach yet minus the disliked fuzz. Large, yellow freestone, with delectable flavor. Very hardy.

RED HAVEN

Ripens Extra Early, Brilliant Color, Extra Fine Flavor, and an Excellent Shipper. This freestone peach is almost fuzzless.

HALE HAVEN

Large! Early! Freestone! Mild, pleasing flavor. One of the best canning Peaches. Rated tops for hardiness.

FAIR HAVEN

A new early variety with an extra good flavor. Fruit is large, smooth skin, firm, excellent for shipping. Ripens about a week before Hale Haven.

ELBERTA

Midseason Peach, outstanding the country over for both commercial and garden purposes. Very large, Highly-flavored, and Juicy. Hardy, Vigorous grower.

Peach Prices

	Each	10	100
7/16 in.	\$1.05	\$10.00	\$65.00
9/16 in.	1.30	12.00	75.00
11/16 in.	1.50	14.00	85.00

Apricot & Nectarine Prices

	Each	2	10
2-3 ft.	\$1.50	\$2.70	\$12.50
3-4 ft.	1.75	3.25	14.50

The Popular Favorite in **PLUMS**

STANLEY PRUNE PLUM

Best Prune-type Plum. Bears second year. Ripens 10 days earlier than other varieties, Freestone, bluish purple skin, luscious golden flesh, rich mild sweet flavor. A thrifty, rapid grower, which is very productive.

SUPERIOR (Jumbo Red)

Largest and very best. Beautiful red color, Delicious Flavor.

GREEN GAGE

Large, round, greenish yellow Plum with a remarkably sweet flavor. Almost lacking of any acid. Freestone. Hardy.

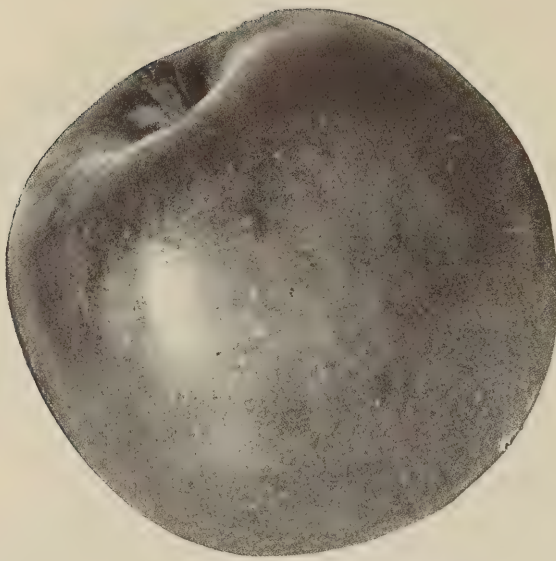
BURBANK

Large, round, maroon-red Plum, Yellow flesh, fine firm texture, juicy. Excellent shipper. Trees bear heavily, often need thinning.

PLUM PRICES

	Each	10	100
7/16 in. 3-4 ft.	\$1.45	\$12.00	\$70.00
9/16 in. 4-5 ft.	1.70	14.50	80.00
11/16 in. 5-6 ft.	1.95	17.50	100.00





THERE'S A PERMANENT REWARD IN HARDY APPLES

SUMMER APPLES YELLOW TRANSPARENT ANOKA

Extra Early, ripens in July. Pale yellow skin, white flesh, juicy, sweet. Prices below, left.

Often bears first year, very hardy, semi-dwarf, Apples large, red and striped. Good fresh or canned. Prices below, left.

FALL APPLES WEALTHY McINTOSH

Hardy, vigorous. Fruit is large, red striped, with tender, juicy flesh of fine quality. Bears young. Prices left.

Beautiful deep crimson fruit. Flesh white, crisp and highly flavored. Tops for market and eating. Prices left.

FAMILY APPLE ORCHARD

Yellow Transparent (Early)
Red Delicious (Medium)
Jonathan (Late)

7/16" Trees, 3 for only \$2.50

9/16" Trees, 3 for only 3.45

All net, No discount.

WINTER APPLES

JONATHAN TURLEY WINESAP

Late Fall and winter Apple. Bright red, white flesh, crisp yet tender. Juicy and full of snap. Everybody likes this quality apple. Trees long lived. Heavy producers and early bearing. Good storing Apple. Prices left.

Best keeper, all-over-red winter Apple. Fruit is large, zesty flavor, crisp and juicy. A favorite for drying. Good eating and cooking apple. Vigorous, hardy, bears young, very productive. Prices left.

APPLE PRICES

	EACH	10	25	100
7/16", Strong	\$1.00	\$9.50	\$18.00	\$65.00
9/16", Thrifty	1.30	11.50	23.00	75.00
11/16" Extra Heavy Rooted	1.50	12.50	25.00	85.00

Big Profits
Yard Beauty

Small Upkeep
Comforting Shade

DOUBLE RED DELICIOUS YELLOW DELICIOUS

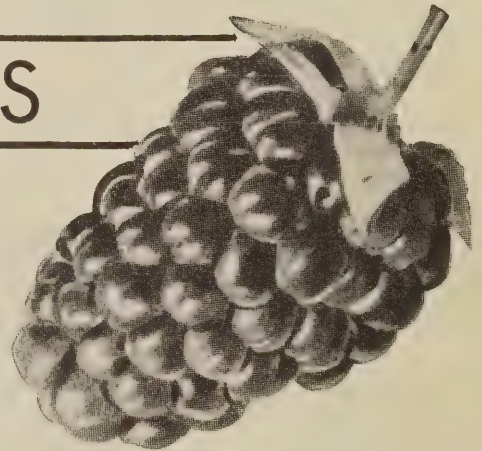
Colors about 3 weeks earlier than the common Delicious. Red all over in August. Brings fancy prices. Fruit is large, has a mild, sweet delicious flavor. Good eating apple. Excellent shipper. Order now and have your trees reserved. Prices left.

The finest late Yellow Apple. Firm, crisp, juicy, similar in size and shape to Red Delicious. Keeps well all winter, does not get mealy. Very productive. Bears young. Always in demand. Prices left.

New Thornless BERRIES

Thornless BOYSENBERRY

Mammoth sized berries often measure 2 inches or more. Their glossy, deep velvety maroon color attracts the attention of the most discriminating. A new taste thrill. Superb tangy flavor. A rich pleasing blend of Raspberry, Loganberry and Blackberry that will long be remembered. Fresh or canned in pies, jams, jellies and cordials. Mighty good fresh frozen. Very productive, 6 to 12 plants will supply average family. Ripens 10 days to 2 weeks earlier than regular thorny Boysenberry. Canes are smooth as silk, so easy to handle, a pleasure to pick. Bring home the big money with Westhauser's proven heavy bearing strains. PRICES: 1-yr., No. 1 plants 6 for \$1.60; 12 for \$2.95; 25 for \$4.65; 50 for \$8.00; 100 for \$13.50; 1000 for \$85.00. 2-yr. - 75c each; 3 for \$1.95; 6 for \$3.00; 12 for \$5.50; 25 for \$11.00.



Thornless DEWBERRY

Another amazing discovery in the Thornless family. Easy to pick, easy to handle (no stickers), hardy, thrifty, succeeds anywhere. Berries large, glossy black, sweet and juicy. Extra delicious fresh, in pies, jams and jellies, makes excellent wine. PRICES: 1-yr., No. 1 Plants 40c each; 3 for \$1.00; 6 for \$1.75; 12 for \$3.00; 25 for \$5.50. 2-Yr. No. 1, Fruiting Size, \$1.00 each; 3 for \$2.00; 6 for \$3.75; 12 for \$5.50.

Thornless BLACKBERRY

Heavy producer, practically coreless, absolutely thornless. True outstanding Blackberry flavor. Vines similar to Grape vines, make rank growth, 8 to 10 feet. Deep Green Foliage. Thrifty Grower. Be sure to get started now. PRICES: 1-yr. No. 1, 75c each; 3 for \$2.00; 6 for \$3.75; 25 for \$12.00. 2-yr. No. 1 Fruiting Size Plants \$1.50 each; 3 for \$4.00; 6 for \$7.50.

Thornless COLLECTION

3 Thornless Dewberries 1-yr.
10 Thornless Boysenberries 1-yr.
2 Thornless Blackberries 1-yr.
\$3.95
Net, No Discount.

THE AMAZING PONDEROSA

LEMON

GROW YOUR OWN LUSCIOUS

FIGS

A most interesting houseplant, both Unique and Useful. Perhaps you heard Paul Gibson describing these amazing miniature trees over WBBM, or saw John Ott display them on his TV program- "How does your Garden Grow." Plants are 8 to 12 inches tall now, at full maturity will be about 2½ ft. high. Foliage is bright Glossy-Green. The tiny waxy White flowers, appearing several times a year, have golden yellow centers, and a delightful Gardenia-like fragrance. The real thrill comes when you discover the tiny emerald-green fruits peeking through, almost as if by magic, and developing rapidly into mammoth sized, bright yellow lemons, very juicy . . . delicious for lemonade and a host of other uses. Rich in Vitamin C . . . so good for you. Easy to grow. Cultural directions included with each plant, also a colorful plastic pot that has a reservoir-like base for easy watering and plant feeding, a package of humus to mix with your soil when planting a year's supply of plant food, neatly packed in a cardboard container, **All for Just \$3.95 Postpaid.**



Ponderosa Dwarf Lemon

For better health eat more Figs. Grow your own. (Texas everbearing ripens in June, continuing until frost. Very productive and extra hardy. Can be grown anywhere, even if severe cold winters kill the tops, bushes will sprout up from the roots. Bears early, often the same year planted. Fruit is large, the light golden flesh is meaty, sweet and delicious. Good to eat fresh, excellent for preserving and drying.

Prices

2-yr. 95c each;
2 for \$1.75;
5 for \$3.65

Colorful Home Planting

ILLUSTRATIONS ON FOLLOWING PAGES

French Tree Lilac

Beautiful Hybrid French Lilacs rival other shrubs for popularity! Color! Fragrance! No other plant offers so much for so little. Hardy everywhere. Hybrid French Lilacs are leading the Lilac parade. Blooms early, often the first year. Mammoth panicles measure from 7 to 12 inches. Billowy masses of gorgeous clusters fill the air with perfumed loveliness. Budded on hardwood, non-suckering roots. Three exquisite colors: **Chas. X**, large double flowers of wine-red, fine for cutting. **Marie Legraye**, snowy white. **Ludwig Spaeth**, rich crimson-purple. **PRICES: 12/18", 2-yr. field grown \$1.35 each; 3 for \$3.45.**

Chinese Magnolia

(Soulangeana)

The striking contrast of this magnificent ornamental, appearing in early spring with its large, bell-shaped flowers, 6 to 10 inches across, white inside, pink or orchid on the outside, followed by rich, glossy, dark green leaves, make it a highly ornate specimen at all times of the year. Grows 18 to 20 feet high. Combines attractively with spring bulbs and perennials. Admirers will come by your home just to see its amazing beauty. This variety is the hardiest and is adapted to northern climates. **PRICES: 18-24" \$2.50 each, 2 for \$4.50.**

Creeping Phlox

The Perfect Ground Blanket. Cherished as much for its refreshing evergreen foliage as for its masses of flowers that appear in April and early May. Colors: Snowy white and rosy pink. One of the most beautiful of the low creeping plants is Phlox Subulata. Its diminutive spreading plants, 2 to 6 inches high, thrive well anywhere. Ideal for borders, rock gardens and terraces. Plant 1 foot apart each way to make a dense ground cover in a short time. **PRICES: 40c each; 3 for \$1.10; 10 for \$2.75.**

Tree Hydrangea

Few can equal it in magnificence or appearance. It adds stateliness to any landscape. The snowy white flowers changing to a deep pink are borne in large clusters, actually they are enormous individual bouquets. Dry some and have a lovely bouquet all winter. This tree is very hardy and blooms lavishly from July to September. Plant along the walk or driveway, a pleasing contrast to lower growing plants. **PRICES: \$2.75 each; 2 for \$4.50.**

Three Color Althea

A tall shrub of upright growth, rounded form. Valued for its late flowering season. These "Rose of Sharon" have been grafted to produce an outstanding and pleasing effect with our most popular colors, Red, White, Blue. **PRICES: \$2.00 each; 2 for \$3.50; 6 for \$9.50.**

Forsythia

Earliest to bloom. Springtime's Golden Queen, countless bright yellow flowers blooming in April before their leaves unfold. Should be included in every border or foundation planting. Very hardy. Five to eight feet at maturity. **PRICES: 2-3 ft. \$1.00 each; 3 for \$2.75; 6 for \$5.00. 3-4 ft. \$1.25 each; 3 for \$3.45.**

◀ IT'S NOT A HOME UNTIL IT'S PLANTED ▶

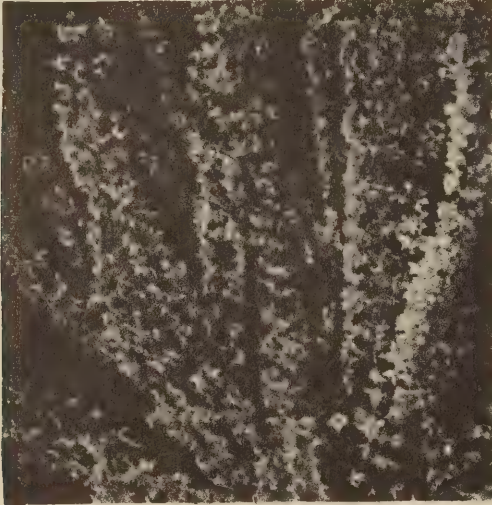
HOPA - Flowering Crab

ORDER EARLY!
For Cash
Discount
See Page
18

This picturesque beauty will lend distinction to your lawn or flower garden. A particularly showy specimen - just like a huge bouquet during May and June, when the branches are heavily laden with fragrant, large delicate pink flowers resembling miniature roses in form. The flowers are followed by fruit that has a bright red flesh which makes it doubly desirable for preserves as well as an ornament. Fruit lingers on until fall. The Hopa is very hardy and disease free. It undoubtedly is the most beautiful Flowering Crab that can be grown in the North successfully. An outstanding sensation for single or group planting. **PRICES: 4-5 ft., \$1.75 each; 3 for \$4.75; 6 for \$8.00.**

**ATTRACTIVE
SETTINGS AT
LITTLE
COST**

Flowering



FORSYTHIA



ALTHEA



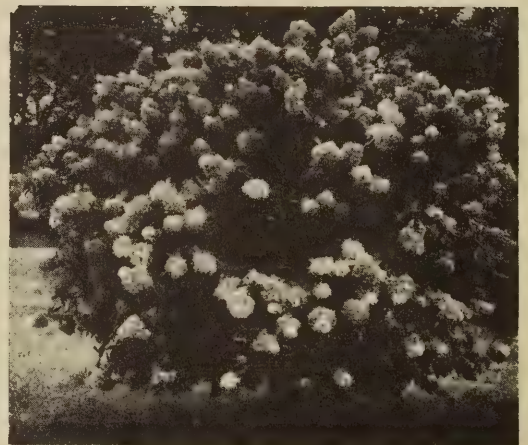
MAGNOLIA



FRENCH LILAC

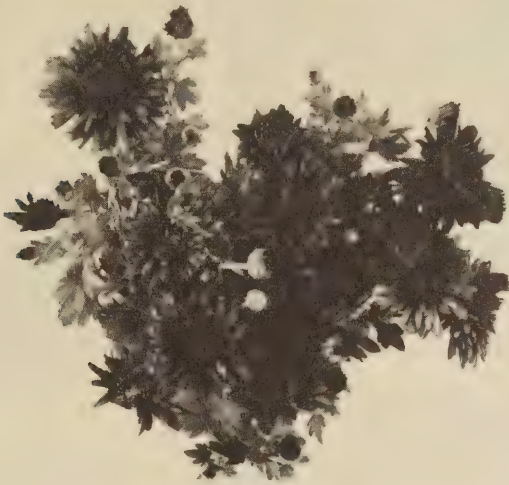


CREEPING PHLOX



TREE HYDRANGEA

SHRUBS *and* TREES



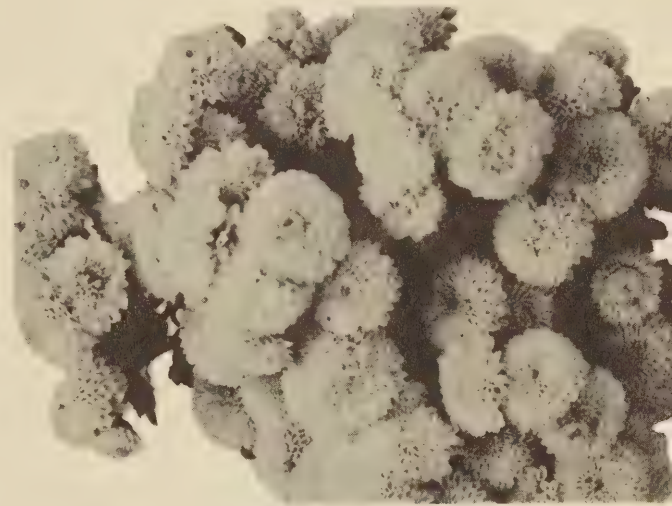
JACKIE MUM
Description on Page 23



✓ **HOPA CRAB**



COLORADO BLUE
Description on Page 30



YELLOW MUM (Button)
Prices on Page 23



BLUE MIST
Description on Page 28 [17]



✓ **GOLDEN QUEEN RASPBERRY**
Description on Page 8

For Dependable Friendly Service

Buy by Mail From
Westhauser

THE FINEST NORTHERN GROWN
HARDY NURSERY STOCK AT LOW PRICES

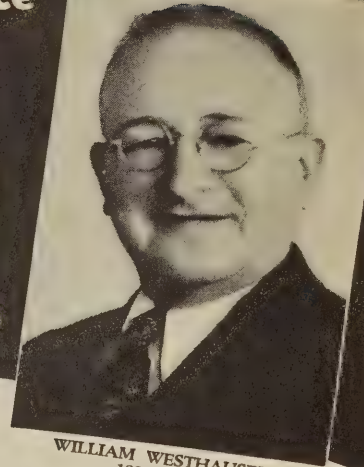
Come Visit Us Any Time



You are cordially invited and most welcome to visit our Packing House, Offices and Farms any time.



R. E. WESTHAUSER
General Manager



WILLIAM WESTHAUSER
1881-1946
Founder

We are Members of:
American Mail Order Association
National Mail Order Association
Michigan Association of Nurserymen
National Landscape Association

REFERENCES
Dun & Bradstreet
Postmaster, Sawyer, Michigan
Benton Harbor State Bank,
Benton Harbor, Michigan
Express Agent, Sawyer, Michigan

YOU Benefit By These Advantages!

- **PACKING HOUSE WITH REFRIGERATION** is your assurance of plants arriving in A-1 condition as all of our nursery stock is fresh dug—pre-cooled in our spacious cooler—then shipped direct to you.
- **UP-TO-THE-MINUTE FARM EQUIPMENT** assures you of getting only the finest fully matured plants, as our modern farm equipment enables us to get our nursery stock in the soil in proper planting season, giving it a lengthy growing season, in which to mature fully.
- **WITH OUR LARGE SCALE IRRIGATION SYSTEM** we are (even in drought seasons), always able to produce healthy, extra heavy rooted, quality stock for you.
- **CROP ROTATION.** Healthy, sturdy, northern grown nursery stock is the result of our years ahead plan with definite crop rotation and in conjunction with this we maintain a large herd of steers to produce the highest fertility, which in turn goes directly into the plants you receive from the Westhauser Nurseries.
- **HARDY NORTHERN CLIMATE.** Our northern climate in the great Michigan Fruit Belt is ideal for growing thrifty, hardy nursery stock, being located so near Lake Michigan, which puts a damper on our winters making the climate such that our nursery stock is practically dormant until late in spring. Bear in mind, Mr. Fruit Grower, plants that are dormant so late in the season have little foliage and carry well in transit, that is one of the reasons why our plants can be shipped long distances with the best of results.
- **GET THE BEST AT NO EXTRA COST.** In spite of rising prices, with the modern facilities mentioned above, we are able to keep our costs at a bare minimum.

Certificate of Nursery Inspection No. 6185

This is to certify that the nursery stock of Westhauser's Nurseries, Sawyer, Michigan, has been examined and found to be apparently free from dangerous insects and dangerously contagious tree and plant diseases. Fee paid, Chas. Figy, Commissioner. This certificate to be void after September 15, 1954, Bureau of Agricultural Industry, C. A. Boyer, in Charge of Orchard and Nursery Inspection, Lansing, Mich. 8-10-53

WESTHAUSER'S BROAD GUARANTEE

We guarantee our nursery stock to be first class in every respect, free from disease, true to name, and to leave our packing house in good condition. We will, at our option, either replace free of charge or refund your money on any shipment which arrives in bad condition, providing claim is made within five days after arrival of shipment, with a signed statement from your express agent or postmaster, showing the extent of damage. It is mutually agreed between customer and ourselves that we cannot be held liable for any amount greater than the original purchase price. Our stock is carefully handled and full of vitality and under ordinary conditions should grow for you. Report any error on our part immediately upon receipt of shipment. We will not entertain any claims entered after July 1st.

WE RESERVE THE RIGHT TO SUBSTITUTE A
SIMILAR VARIETY OF EQUAL OR GREATER VALUE IF SUPPLY IS EXHAUSTED

Your Choice of FREE GIFTS

EXTRA PLANTS WITHOUT COST

Choice of One of the Following:

With Orders for \$5.00 Net or More

- | | |
|-------------|----------------------|
| 2 Mums or | 1 Spirea or |
| 10 Glads or | 1 Hahn's English Ivy |

10% DISCOUNT

ON ORDERS RECEIVED BEFORE
FEBRUARY 10, 1954

EXCEPTING THOSE MARKED NET NO DISCOUNT

HOW TO ORDER

WHEN TO ORDER:

Now, upon receipt of this catalog, or as soon thereafter as possible, so we can reserve the stock you wish. Orders are booked in the rotation they are received, and we ship as near date requested as possible, according to weather conditions. Shipping begins usually early in March to latter part of May, and first of October to latter part of December, weather permitting.

HOW TO ORDER:

An order blank is provided herewith for your convenience. Fill out clearly and be sure to print or write your name and address plainly, thus avoiding errors and delay. Remit by cash, money order or check. If cash is remitted be sure to register letter.

PAYMENT AND TERMS:

Cash with order, or if your order amounts to \$5.00 or more we will book same with 25% down payment, and balance 10 days before you wish your stock shipped.

DISCOUNT:

Orders received before February 10th, excepting those marked net, no discount, with full cash enclosed, are subject to 10% discount. Either deduct this amount from your remittance or select extra nursery stock for the amount. (We assume no obligation to refund, if you fail to deduct it). All prices are F. O. B. Sawyer, unless otherwise stated in catalog.

Nature's Greatest Gifts

TO MANKIND

NUT TREES

FOR PROFIT FOR BEAUTY FOR SHADE

PECAN

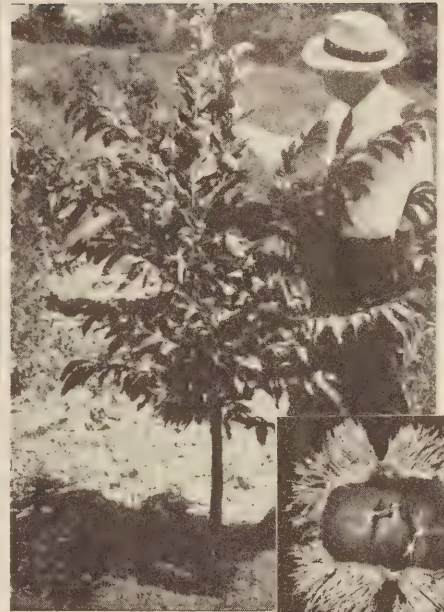
Just as hardy as Hickories, and should not be confused with southern grown stock. Our trees are Michigan grown and have withstood temperatures of 17 to 20 degrees below zero without injury. Ideal shade trees, practically immune from insects, and do not shed their leaves until late in fall. **PRICES:** 2-3 ft. \$1.50 each; 3 for \$4.00; 6 for \$7.50. 3-4 ft. \$2.00 each.



Hardy
Northern
Grown

CHINESE CHESTNUT

A new Chestnut with larger, better quality nuts. The trees we offer are blight resistant, and of only one quality - **the finest grown.** Not only do these trees produce large, delicious full-flavored Chestnuts at an early age, but their beautiful rounded, spreading branches rapidly develop into a lovely shade tree to grace any home lawn. Have the thrill of roasting Chestnuts from your own trees over an open fire. Try them boiled or roasted - delicious beyond description. **PRICES:** 12-15" \$1.50 each; 3 for \$4.00; 10 for \$9.00 2-3 ft. \$2.00 each; 2 for \$3.90; 5 for \$7.00.



Chinese Chestnut

HIGHEST
QUALITY
NUTS

BLIGHT
RESISTANT

BLACK WALNUT

Well known, very productive, easy to grow and hardy practically anywhere. Richly flavored kernels useful for many purposes. A beautiful lawn or shade tree, symmetrical dark green foliage which turns to a flaming coppery red after frost. High timber value. **PRICES:** 2-3 ft. 20c each; 2 for \$1.50; 5 for \$3.50; 25 for \$15.00.



BLACK
WALNUT

Wonderful
Shade Trees

HAZEL NUT (Filbert)



To ornament your lawn, plant the family favorite nut producer. Attractive bush for tall hedging, very hardy which yields an abundant crop of tasty nuts, tender and of fine flavor. Will grow to size of small Peach tree. **PRICES:** 18-24" 75c each; 2 for \$1.40; 5 for \$3.00; 10 for \$5.75. 2-3 ft. \$1.00 each; 2 for \$1.85; 5 for \$4.25; 10 for \$7.75.

SPECIAL OFFERS
TO
SAVE MONEY
(page 31)

BUTTERNUT

No better flavor than is found in the sweet, oily, nutritious kernel of the Butternut. This hardy, native tree, comely in form, stately in growth, enduring and resistant to storm, will put out its leaves in spring and yield its crop in autumn. Butternut trees start to bear young. They require no spraying. Old timers always say that nature made this Nut Good Enough so that there is no need for improvement. **PRICES:** 3-4 ft. \$1.00 each; 2 for \$1.95; 5 for \$4.50; 10 for \$8.00.



SWEET-NUTRITIOUS

SPECIAL NUT TREE OFFERS

1 PECAN 2-3 ft. \$1.50
1 BLACK WALNUT 2-3 ft. .80
1 BUTTERNUT 3-4 ft. 1.00
\$3.30 VALUE FOR ONLY \$2.55

2 CHINESE CHESTNUTS
2 HAZLENUTS
2-3 ft. Trees - \$5.75 Value
FOR ONLY \$4.50



Everblooming Hybrid Roses

Give lasting beauty to your garden through the colorful display of Tea Roses bearing their blooms profusely from June until late Fall. Bushes are very hardy and vigorous.

Etoile de Hollande—A brilliant dark velvety red Rose of perfect form and magnificent size.

Luxembourg—Noted for its quantity of deep yellow, rich fragrant blossoms.

Condesa de Sastago—Cerise-pink with golden yellow petals on back; has an alluring fragrance.

Pink Radiance—This rose-pink flower has a pungent, true rose fragrance, one of the world's most dependable roses.

Konigen Louise—A perfect white Rose. Its long pointed buds open into blooms of breath-taking loveliness.

Rose Prices: Select, fancy, 2-yr. No. 1, \$1.15 each; 5 for \$5.00; 10 for \$9.50. Net, no discount.



**J
U
M
B
O**

SIZE



Climbing Roses

Thousands of blooms in a small space. Fences, trellises, arbors, or unsightly places soon become aglow with vivid colors.

Paul Scarlet. Huge clusters of intense scarlet blooms in abundance in June.

Dr. Van Fleet. A mass of beautiful clustered buds, opening into large, shapely flowers of flesh-pink.

Golden Charm. A blanket of gold is formed by this outstanding climber.

American Beauty. Fine form, carmine-red, free flowering, very fragrant.

PRICES: \$1.15 each; 5 for \$5.00; 10 for \$9.50. Net, no discount.

The "LIVING FENCE"

MULTIFLORA ROSE

So Practical! Yet so Beautiful! The pale dusty pink profusion of blossoms in early spring, followed by large red berries, plus its gallant green foliage from spring until snow—add unforeseen beauty to your fields. Multiflora is very hardy, thrives everywhere and does not spread out, making it easy to plant right up to this living fence line. Needs no clipping, pruning, or training; grows naturally to fill the bill. Plant this fast growing Multiflora for fence hedge or border, so dense a foliage no person or animal can get through. Plant 12" apart. **PRICES:** 15-20 inches, 10 for \$1.30; 25 for \$2.65; 50 for \$4.75; 100 for \$8.00; 1000 for \$55.00.



Special

3 Giant Red Lake Currants

3 Golden Gooseberries

For Only \$3.25, Net, no disc.

RED LAKE CURRANTS

Outbears Others Two to One. Double your crop and profits by raising these big, very productive Currants. Bushes thrifty and exceptionally hardy, easy to grow. The berries are dark red in color, and being borne on long, well filled bunches are a pleasure to pick. Originated in the Northwest where the temperature goes 40 degrees below zero. They ripen in early midseason and last over a long period. **PRICES:** 70c each; 3 for \$1.85; 10 for \$5.60; 25 for \$11.00.



GOLDEN GOOSEBERRIES

HARDY PLANTS — QUICK GROWING

The berries are very large with a delicious flavor. Their greenish yellow color turns to pink when fully ripe.

The plants are hardy and very vigorous growers. Golden Gooseberries bear young and annually of sturdy bushes. Plants will last for years with very little care. Very good for pies. Fruit ripens in July. **PRICES:** 90c each; 3 for \$2.15; 10 for \$6.75; 25 for \$16.00



BOHEMIAN HORSERADISH ROOTS

PRICES: 1-yr., Extra Heavy

	6	12	25	50
	\$.60	\$1.00	\$1.50	\$2.60
Extra Heavy Clump Crowns				
Each	3	6	12	
	\$.50	\$1.25	\$2.25	\$4.00

ORIENTAL CHERRIES

Tomentosa, an improved variety producing an abundance of blooms and fruit. Self fertile. Flesh of fruit is meaty, juicy with a pleasant sub-acid flavor. Excellent for eating fresh or for jams and jelly. **PRICES:** Extra heavy, 2-3', \$1.60 each; 3 for \$4.55.

JUMBO

Hansen Bush Cherry

A rapid growing ornamental—can be planted singly or in groups, makes a gorgeous hedge with its snow white blossoms and attractive foliage of silvery green turning red and gold in the fall. Bush Cherry is hardy and easy to grow, will thrive on all kinds of soil. The cherries are large and Plum-like, fine for eating fresh from the bush. They have a wonderful flavor, most outstanding for jams and jellies. The bush grows from four to five feet. **PRICES:** 24 to 36-inch plants, \$1.00 each; 3 for \$2.75; 6 for \$5.00; 12 for \$9.00. Large 3-yr., extra heavy size, \$1.25 each; 3 for \$3.25.



FLOWERS

Perennial

Beautiful

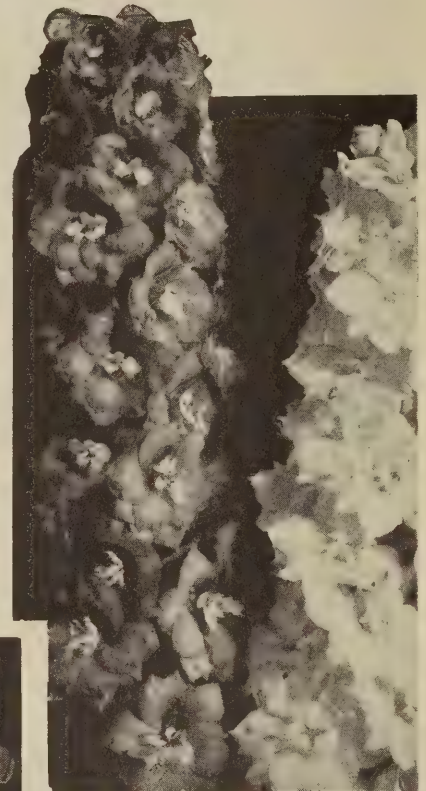
Permanent

All items on this page - Postpaid



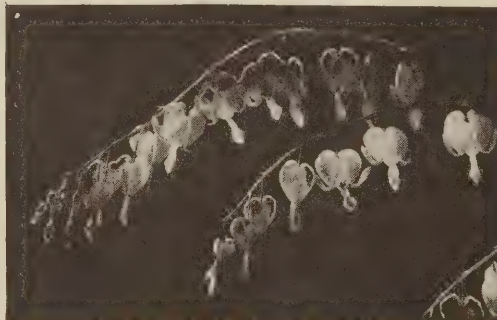
CARNATION

Medium Tall, dazzling red flowers that bloom freely until frost. Price: 45c each; 3 for \$1.10; 6 for \$1.95



DELPHINIUM

2-toned double lavender through deep purple blossoms on spikes 3-4 ft. long. Prices: 45c each; 3 for \$1.10.



BLEEDING HEART

A most delightful spring-flowering plant. Graceful, heart-shaped, rose-colored flowers. Foliage is an attractive blue-green color. Thrives in partial shade or full sun. Plants become larger and more beautiful each year. Attains a height of 2 feet. Prices: 75c each; 3 for \$2.00.

BLUE GARDENIA

(Campanula) Semi-Dwarf Perennial
A rare beauty of deep blue, Gardenia-like flowers. Fits in anywhere from formal border to the rocky ledges of the woods. Stalks of bloom reach a height of about 2 feet. Blooms May to July. PRICES: Nice sturdy plants, 75c each; 3 for \$2.00.

LYTHRUM

Ideal perennial border. Spike after spike covered with deep rose-colored flowers. A mass of blooms from June to September. Grows 3 to 4 feet high. Prices: 2-yr., blooming size plants, 50c each; 3 for \$1.25; 6 for \$2.25; 12 for \$4.00.

PINKS

Treasured as much for their rich clove fragrance as for the abundance of flowers in rose, pink, red and white combinations with occasional yellow. These dwarf perennials bloom continually from early June for extended period. Prices: 40c each; 3 for \$1.10

FOXGLOVE

The flower heads are over 3 feet long, crowded with big bell-shaped blossoms. Colors range from white to shell pink to deep rose, many attractively dotted crimson or chocolate. Prices: Strong, field-grown plants, 40c each; 3 for \$1.10.

BABY'S BREATH

This new plant is ideal for borders and rock gardens. Flowers in spring and continues throughout the entire summer. The flowers are double, first pure white, later, flesh-pink. Very hardy—grows to about 12 inches in height. PRICES: 40c each; 3 for \$1.10.

SHILKA IRIS

The poor man's Orchid, as it is known, is a very hardy medium tall perennial. It was discovered in the wilds of Siberia where it is very cold. Looks like an expensive Orchid; beautiful harmonizing flowers; many are double. Blooming period for six weeks or more. Prices: 40c each; 3 for \$1.10.

SWEET WILLIAM

Everblooming! Imagine the most popular garden flower in full array of mixed colors, blooming consistently throughout the entire season, showing their beautiful colors in fancy patterns. The flowers are shaped, colored and clustered much like Phlox; markings being more shapely. A mixture of delicate and beautiful colors. Prices: 40c each; 3 for \$1.10.

ENGLISH VIOLET

Beautiful for all types of border or bed plantings. Broad heavy foliage of a deep green. Flowers of an extremely sweet-scented, purple-violet, borne in profusion on graceful stems. Grows 6 to 8 inches high. Very hardy, will thrive under any conditions. For edging plant them 8 inches apart. PRICES: 40c each; 3 for \$1.10.



MUMS and ASTERS

Bursting with Beauty

Look! What Beauties! Blossoms! Blossoms! Everywhere - Thousands on a single plant. Unless you have seen these Azalea type Mums you cannot visualize their beauty; one plant a flower garden in itself, 500 to 1,000 blooms the first year, many more the next. Five colors to blend the autumn season - Deep Golden Yellow; Pure Snowy White; Lovely Rose-Pink; Brick-Red; and Outstanding Bronze. These plants are extremely hardy, attaining a height of 1½ to 2 ft., and lasting almost a lifetime. Grow well on all types of soil.

PRICES: 45c Each; 5 for \$2.10 Postpaid.

YELLOW BUTTON MUMS— See Illustration, Page 17. PRICES: 50c each; 5 for \$2.25 Postpaid.

CARNATION-FLOWERED MUM - A new, hardy, early, flowering garden mum; blooms 2 to 2½ in. across, that look like carnations. Ideal for cutting. Nicely branched, boxy, 24-30" plants, wind firm, bloom in August until severe frost.

PATHFINDER**** Bright golden yellow;

PLAINSMAN**** Bronze with red-dish tone; PRICES: 75c each; 3 for \$1.95 Postpaid

PAINTED DAISY.

Large, compact, beautiful Daisies. Hardy and easy to grow. Gorgeous assorted colors on long, erect stems. Excellent for cutting. Long season of blooms for bouquets. Grows about 2½ feet tall. PRICES: 45c each; 3 for \$1.35.

Postpaid

The rich coloring of these hardy Fall Asters will surely thrill you when they burst out all over with thousands of blooms to add glory to your fall flowers from late August through November. The plants range from one to three and one half feet in height. Wherever planted the effect of Asters is most charming as they blend with the landscape, yet are very much in evidence. For variety in color and height order some of each:

VICTOR. Dwarfest of all, growing 6 inches to 1½ ft., but still loaded with good sized flowers of beautiful clear lavender-blue.

SUNSET. Medium in height, ranging from 1½ to 2½ feet. Glorious sunset-pink with blooms so thickly covering the branches it appears as the sun itself, going down behind the horizon.

BLUE SKYLARK. Grows 2½ to 3½ feet, making it an ideal setting for a back-ground or border planting. Very outstanding with its sky-blue thick petals and yellow disc centers. Lovely for fall bouquets, either alone or mixed. PRICES: 40c each; 3 for \$1.10; 6 for \$1.80 Postpaid

GALLANT JACKIE MUM

Just a few bushes of these brilliant, deep wine-red flowers with their golden centers will brighten up your whole garden. Bushes are compact, free flowering, hundreds of blooms from July until the snow flies. Full grown plants average 2 to 3 feet in height and 24 to 36 inches through. PRICES: 75c each; 3 for \$2.00. Postpaid

Photo, Page 17.

AUTUMN SPECIAL

1 Blue Skylark
Aster

1 Pathfinder
Mum

1 GALLANT JACKIE
Mum

Only—\$1.50 Postpaid
Net, No discount



Attractive Color and Beauty From
FLOWERING TREES



1

**CRIMSON
 KING
 MAPLE**



2

RED LEAF PEACH



3

FLOWERING PLUM



4

RED-BUD

1 CRIMSON KING

Truly one of Nature's most outstanding works of art. The leaves are red from the moment they unfurl and retain this beautiful color throughout the entire season. Develops rapidly, very hardy and easy to grow. Not particular as to climate or soil. Crimson King Maple is a must for every lawn. Order promptly; Be assured of possessing one of the finest trees you have ever owned.
PRICES: 4-5' \$4.00 each; 2 for \$7.50.

3 FLOWERING PLUM

Prunus Pissardi, a handsome purple-leaved form is a rare beauty; covered in the spring with thousands of large clusters of double pink blossoms. Delicious small fruit, ripens in early autumn. Delightful planting for accent or contrast. Very hardy, grows to 15-18'.
PRICES: 3-4 ft., \$2.50 each; 3 for \$6.00. 4-5 ft., \$3.00 each; 3 for \$7.50.

2 RED LEAF PEACH

What a delightful contrast the deep rose blossoms produce amongst foliage of bright red, turning a deep maroon toward fall. This truly different Peach tree produces a full crop of delicious Peaches ripening about the same time as a Gold Drop (late). **SEE** the beauty of the foliage; **SMELL** the fragrance of the blossoms; **TASTE** the flavor of the fruit; **HEAR** the comments from the neighbors and friends, as all who see the Red Leaf Peach acclaim its outstanding characteristics.
PRICES: 3-4 ft., \$1.45 each; 2 for \$2.80; 4-5 ft., \$1.65 each; 2 for \$3.00.

4 RED - BUD

This lovely American tree is most welcomed in early spring, clothed entirely by blossoms in April, borne in clusters on the old stem as well as younger growth. These rosy purple flowers are followed by leaves which are broadly ovate-3 to 5 inches across, deeply heart-shaped and abruptly pointed. Sometimes called Judas Tree for legend tells us when Christ was betrayed by Judas this tree seemed to drip all over with drops of blood. Very hardy.
PRICES: 2-3 ft., \$1.45 each; 2 for \$2.75.

SPRING THRU FALL...

Flowering Shrubs

FRENCH PUSSY WILLOW

A small treelike shrub with attractive leaves 2 inches long and an inch wide. Its popular appeal is the conspicuous silky, fur-like catkins which bud in the fall and make those "springy" bouquets just as the snow melts in spring. PRICES: 80c each; 3 for \$2.00 Postpaid.

FLOWERING QUINCE

Dazzling, bright scarlet-red flowers have golden yellow stamens. Flowers appear in May before the foliage unfurls, followed by highly fragrant greenish yellow fruit, rich in pectin, makes excellent jelly. Ideal for specimen planting - - can be pruned for hedging. PRICES: \$1.00 each; 3 for \$2.50 postpaid.

SPIREA VAN HOUTTEI

A magnificent tall flowering hedge. Long, graceful, drooping sprays are covered with countless white blooms in Early Spring. The brilliant glossy-green, oval foliage turns bronze, orange and scarlet in Fall. PRICES: 15-18" 50c each; 3 for \$1.40; 10 for \$4.80 Postpaid. 24-30" 80c each; 3 for \$2.20 Postpaid.

HIGHBUSH CRANBERRY

Ornamental the year around. The upright bushes have smooth gray branches. The foliage is bright-green. Clusters of snowy white flowers appear in May or June, followed in Fall by showy scarlet-red berries that cling to the bushes all winter. Grows 8-12 feet tall. PRICES: Blooming Size, \$1.00 each; 3 for \$2.65, Postpaid.

SNOWBALL

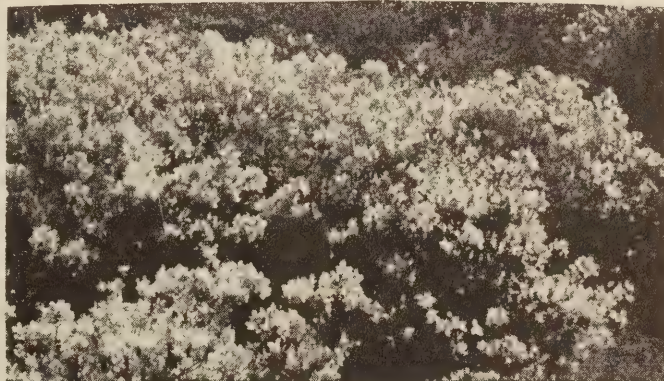
Well known, shrub, flowers grow in large ball-like clusters, snow-white, blooms May to June. Attains height of 8 to 10 feet. Very hardy does well in partial shade or full sun. PRICES: 90c each; 3 for \$2.25 Postpaid.

JETBEAD

Bright Green Foliage. Large White Flowers bloom May-June. Shiny Black Fruit. Thrives everywhere PRICES: \$1.00 each; 3 for \$2.40 Postpaid.

AZALEA

For a display of color unequalled by another shrub plant Westhauser's Hardy Azalea. A compact low-growing bush not over 3 ft. Produces an abundance of flowers in spring and early summer, beautifully shaped foliage. Being an acid-loving plant Westhauser Azaleas are packed in Gro-Kwick, an acid peat, use it in planting, your Azalea will appreciate it. PRICES: \$2.00 each; 3 for \$5.30 postpaid.



Azalea



Buddleia



Weigela-Rosea



Hydrangea

COTONEASTER

Erect, slightly spreading makes a beautiful appearance for hedge or specimen planting. Tiny, shiny, dark green holly-like foliage takes on brilliant coloring in Fall, and hangs on the bushes well into winter. The two-to-five-flowered clusters of bloom develop conspicuous black fruits. Hardy, and easy to grow. PRICES: \$1.25 each; 3 for \$3.35 Postpaid.

HYDRANGEA A. G.

Large, globular clusters, Pure White flowers. Blooms July-August. Attains height of 5 to 6 feet. Plant 3 to 4 feet apart. PRICES 90c each; 3 for \$2.45 Postpaid.

WEIGELA ROSEA

This popular shrub completely covered in May with pleasing rich deep-pink, bell-shaped flowers is truly a wonderful sight. Beautiful green foliage, an outstanding shrub for any garden. Grows 3 to 4 feet high. PRICES: 90c each; 2 for \$1.75, Postpaid.

HYDRANGEA P. G.

Showiest late blooming shrub. Free flowering, immense pinkish-white blooms - fine for winter bouquets. Hardy. Grows 5 to 7 feet tall. Plant 3 to 4 feet apart in rich soil, water very freely. Prune severely each spring. PRICES: \$1.25 each; 3 for \$3.35; 6 for \$6.00 Postpaid.

SPIREA FROEBELI

Early blooming, Crimson-red in flowers in June. The branchlets are dark brown even when young, are of low, upright growth. This ideal shrub for foundation planting has ovate-oblong leaves. PRICES: 80c each; 3 for \$2.15; 10 for \$6.40, Postpaid.

CORALBERRY

Noted for its large clusters of red berries which hang on all winter. A medium sized shrub with gray-green oval leaves, and delicate pink-white blossoms that precede the brilliant red berries. PRICES: 80c each; 3 for \$2.00, Postpaid

BUDDLEIA

Beautiful Lilac-like flowers continuous in bloom from July to frost in three gorgeous colors. DUBONNET-the Reddest. PINK CHARMING-Orchid-pink. HARTWEGI-Bright Lavender. The long panicles of fragrant flowers borne in super-abundance on compact bushes, add to their beauty by attracting Nature's most beautiful insect - - the butterfly. Perfect for cutting. Lovely alone or in combination with other flowers. Bushes attain height of 5 feet. PRICES: 90c each; 3 for \$2.25 Postpaid.

GALA BEAUTY FOR YOUR FRONT and BACK YARD



SNOWFLAKE

New Double Mock Orange (Patent No. 538) Its, very double snow-white blossoms among the large leathery glossy green leaves make it unsurpassed in beauty. Quick growing, not particular as to the soil and will stand the shade better than most flowering shrubs. The blossoms reach their maximum of bloom in May and June, yet linger throughout the entire summer, making it very useful for accent planting. The sweet-scented blooms will perfume the summer shrubbery border. Order early and have this beautiful shrub reserved for you.

PRICES: \$1.50 each; 3 for \$4.00

KOLKWITZIA HONEYSUCKLE

Graceful, arching branches - really a beauty specimen. During the June bloom the branches droop under the weight of the lovely pink, bell-like flowers. Grows to about eight feet in height. Extremely hardy.

PRICES: Landscape Size, \$1.40 each; 3 for \$3.60.

The Tartarian Honeysuckle is the popular favorite. Bright green foliage with a profusion of deep pink flowers followed by brilliant red berries that ripen in midsummer and cling to the bush for several months.

PRICES: 24-30 in., 80c each; 3 for \$2.00.

SPECIAL

1 Cornus Florida

1 Kolkwitzia

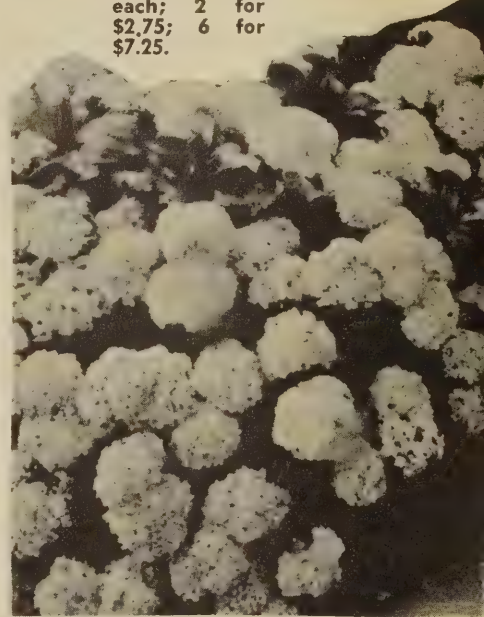
1 Tartatian Honeysuckle **\$2.50**

All three for ONLY
Net, No Discount

BLUE HYDRANGEA

A mass of extremely delightful, deep blue blossoms measuring from 6 to 10 inches across. All plants shipped with a clump of dirt in which they were grown, and packed in Westhauser's Gro-Kwick acid peat, (see Page 6). Mix this Gro-Kwick half and half with top soil; backfill opening with this mixture to insure a more intensive blue color. All flower lovers adore this magnificent beauty.

PRICES: \$1.50 each; 2 for \$2.75; 6 for \$7.25.



DOGWOOD

One of the most beautiful of the small ornamental trees. Handsome in early spring with its profusion of unique blossoms; bright rosy-pink or creamy white. So showy in the fall with its scarlet berries produced in small clusters. Gorgeous leaf coloring-deep green in the spring and summer, -glorious scarlet-red in autumn. Does well in partial shade or full sun. Two hardy varieties: CORNUS FLORIDA, white flowering and CORNUS RUBRA, pink or red flowering. PRICES: Red, 1 1/2 - 2 1/2 ft., \$3.25 each; White, 1-2 ft., \$1.25 each.



White Flowering Dogwood

WASHINGTON

Unique 4 Season Shrub

Spring.

Dense cluster of creamy white flowers appear in June on this disease resistant shrub.

Summer.

Deciduous, narrow glossy green foliage; a shapely bush attaining a height of 15-20 feet.

Fall.

A picture of splendor with the foliage turning rich orange and red hues.

Winter.

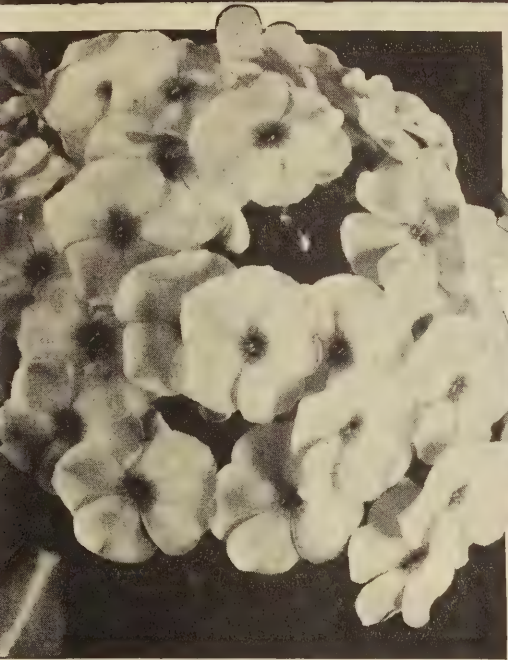
Heavily loaded with brilliant bright red berries; a real feeding spot for birds. Very hardy.

PRICES: \$1.00 each; 3 for \$2.50; 6 for \$4.50.

HAWTHORNE



ADD A DASH OF FLASH *To Your Flower Garden*



BRILLIANT PHLOX

Brilliant blossoms add a dash of flash to any flower garden, lasting from July through September. Pick off old blossoms for continual bloom all season. Phlox are the most popular hardy perennial, blooming each summer for years to come. Plants will grow in full sun or semi-shade, attaining a height of 24 to 30 inches.

1. Charles Curtis. Sunset-red.
2. Pinkette. Creamy pink.
3. Border Gem. Deep purple.
4. Caroline Vandenberg. Blue.
5. E. I. Farrington. Salmon-pink.
6. July Glow. Carmine-red.

PRICES: Hardy, 2-yr., field-grown plants, 40c each; 5 for \$1.65; 10 for \$2.75.



GORGEOUS GLADIOLUS

Perfect in form, exquisite in color with large, tall spikes producing up to 6 or 7-inch flowers. Our sunny glow Gladiolus assortment gives a distinctive variety. PRICES: 25 bulbs, Rainbow Assortment, \$1.35; 50 bulbs for \$2.25; 100 for \$3.75, prepaid. Net, no discount.

Free

Due to popular demand we are including beautiful NEW Purple Supreme.

- 1 with 25 Glad bulb order.
- 2 with 50 Glad bulb order.
- 3 with 100 Glad bulb order.



BEAUTIFUL DAHLIAS

Largest and most beautifully colored early fall flower. Dahlias need little care but produce the fanciest of blooms.

EIGHT GORGEOUS BEAUTIES TO CHOOSE FROM

1. Mrs. Geo. Le Boutillier. Red.
2. Rose Glory. Rose-pink.
3. Avalon. Yellow.
4. Sanhican's Blue Bird. Lavender-blue.
5. Snowdrift. White.
6. Thomas Edison. Purple.
7. Bashful Giant. Bronze.
8. Sanhican's Monarch. Wine.

PRICES: Especially selected bulbs, 70c each; 4 for \$2.50; 8 for \$4.50; 12 for \$6.00, prepaid. Net, no discount.

LARGE FLOWERING

Peonies

Best varieties selected by vote of the American Peony Society:

1. Madame Jules Dessert. White tinged with a very delicate pink. Late.
2. Festiva Maxima. White, rose fragrance.
3. Francis Willard. Blush-white suffused yellow collar. Large, perfect.
4. Alsace-Lorraine. Creamy white. Free bloomer.
5. Longfellow. Cherry-red. Good form.
6. Marquis Lagergren. Large bright velvety crimson. Midseason.
7. Monsieur Jules Elie. Glossy flesh-pink. Very compact, very fragrant.
8. Mary Woodbury Shaylor. Shell-pink, creamy yellow center. Midseason.

PRICES: \$1.00 each; 6 for \$5.00.

6 Select Giant Peonies
Not labeled, \$3.75 net, no discount

**"GALA BEAUTY
FOR YOUR YARD"**



Iris

FRANK ADAMS. A variety that has received much comment. Standards are a rosy tan, the falls are light red making it very distinguished. Fine in every particular: color, branching, vigor of growth.

CALIFORNIA GOLD. One of the largest, state-liest yellows, a true marker of glittering gold. Large, clear, rich smooth yellow evenly tanned, well branched, carrying blooms with an easy grace. A worthy addition.

WABASH. Pure white standards with rich velvety deep violet falls, a most striking variety. Tall with profusion of large slightly ruffled blossoms. Awarded Dykes Medal in 1940.

PINK OPAL. Beautiful flower on a tall stem, a rich pure pink. An outstanding favorite because of its hardiness and freedom of blooms.

BLUE MONARCH. Extremely large blooms of pale blue, handsome foliage and strong stalks. Rugged and hardy, we highly recommend this Iris. PRICES: 50c each; 6 for \$2.50.

HEDGES Provide a Living Fence

DWARF TYPE HEDGING

BLUEMIST

Most attractive low-growing shrub. Silvery-green foliage, Lavender-Blue flowers in dense clusters August to frost. Ideal perennial border. (Illustration Pg. 16)
PRICES: 90c each; 3 for \$2.50 postpaid.

SPIREA AW

Masses of Crimson-Red flowers in July, with scattered blooms throughout summer. Dwarf-compact bushes. Grows in sun or partial shade.
PRICES: 90c each; 3 for \$2.50 postpaid.

CHINESE ELM HEDGE

The very finest of all hardy hedges, very fast grower, can be trimmed to any size or height. Plant 12 to 18 inches apart along walks, drives, lot lines, as windbreaks, or to hide undesirable views. Cut tops back to 12 inches to cause plants to branch thicker from the bottom. Grows 12 to 15 feet in height. **PRICES: 12-18 in., 10 for \$1.95; 25 for \$3.95; 50 for \$6.95; 100 for \$12.95.**

BLUE LEAF WILLOW

(Salix Purpurea Nana)

Charming low growing plant that is hardy everywhere, ideal for low border or edging. Very dwarf and bushy, with thick, fine foliage of lovely gray-blue-green. Just the plant for low edgings around beds or along walks. Plant 8 inches apart, can be clipped or left natural. Single specimens are beautiful in the rock garden. Extremely hardy, thrives on most any type soil. **PRICES: 15-18 in., 40c each; 10 for \$3.50; 50 for \$11.95.**

RED BARBERRY

No other shrub can compare with the striking brilliance of our double red strain of Barberry. Its abundance of thick, purplish red leaves glisten in the sun, contrasting luxuriously with the green and yellow of other plants. Bushes have low growing habit. Can be pruned any time in summer to desired height and width. Lovely for borders, hedges, foundations, groups and lawn specimens. Red berries in winter. Heavy, 3-year landscape size, show up now. **PRICES: 12-18 in., 60c each; 3 for \$1.50. 18-24 in., 85c each; 3 for \$2.25.**

AMUR RIVER PRIVET

The Hardest Privet Hedge

Beautiful, upright growth, makes a compact hedge, hold foliage until late fall. Makes a beautiful trimmed hedge. **PRICES: 15-18 in., 6 for \$1.50; 12 for \$2.25; 25 for \$4.25; 50 for \$7.50. 18-24 in., 6 for \$1.80; 12 for \$3.25; 25 for \$5.25; 50 for \$8.75; 100 for \$14.50.**



Blue-Leaf Willow



Red Barberry



Amur River Privet

VINES - to Screen and Glorify Your Yard

CLEMATIS (Hybrid)

The richly colored, delightfully fragrant flowers with their pleasing foliage make Clematis a favorite for adorning pergolas, trellises and fences. Its decorative possibilities are unlimited. Use it to cover sunny porches or to enliven that old tree stump. Blooms profusely early summer to late autumn. Ideal cut flowers. 1. Jackmani, giant purple. 2. Henryi, lustrous white. 3. Andre, soft velvety red. Why not get some of each?
PRICES: \$1.25 each; 3 for \$3.45.

SILVERLACE

America's No. 1 vine for covering pergolas, archways, arbors, lattice, fences, etc. It is graceful, hardy and easy to grow. Will grow 25 feet or more in a season, and a fully developed specimen is a cloud of misty white, with tints of yellow and pale rose suggesting old lace. **PRICES: 75c each; 3 for \$2.00.**



Silverlace

WISTERIA

Pink - Blue - White - Purple

Easy to Grow! Your choice of 4 Colors! Countless fragrant blooms May thru June. Flowers borne in pendulous clusters, heavy foliage - the ideal living screen. Vigorous climbers. **PRICES: Heavy 2-yr. plants \$1.10 each; 2 for \$2.00; 4 for \$3.85, Postpaid.**

BITTERSWEET

Lustrous green foliage throughout the summer, turning bright yellow in fall. The berries are a bright orange and very showy, stay on into winter. Much used for autumn and winter bouquets, being permanent. Two plants needed for cross pollenization.
PRICES: \$1.10 each; 3 for \$3.00 Postpaid.



Bittersweet



Clematis



Wisteria

ADD BEAUTY and SHADE in record time!



Cut-Leaf Weeping Birch

Its graceful weeping branches, finely cut foliage and shimmering white bark make this one of the most beautiful ornamental trees. Even in winter, without foliage, the delicate pendulous branches make a lovely silhouette against the drab colors of other trees in the background.

PRICES: 4-5 ft., \$2.25 ea.; 2 for \$4.00.



SILVER MAPLE

Rapid growing tree, producing a quick shade suitable for street or park. The leaves are irregularly indented, a bright green on top and silvery color beneath.

PRICES:
6-8 ft. \$2.25 each; 2 for \$4.00
8-10 ft. 3.95 each; 2 for 7.50



GOLDEN NIOBE WILLOW

Cherished for its attractive, pure golden bark. An exceptionally strong, hardy Weeping Willow. Produces green flowers in April. Get one of these rare beauties now.

PRICES: 4-6 ft., \$1.00; 2 for \$1.90.



CHINESE ELM

Very hardy and a splendid tree for the drier locations. A rapid grower. The Chinese Elm grows to a tall tree, spreading with a well rounded head. Suitable to any soil. Our healthy, hardy, heavy-rooted trees are in a class by themselves.

PRICES: 4-6 ft., \$1.60 ea; 2 for \$3.00.
6-8 ft., \$2.25 each; 2 for \$4.25.

TREE WISTERIA

No more lovely sight than a tree Wisteria in bloom—purplish blue flowers by the hundreds completely cover the tree during May. Long lived, increasing in beauty and dignity each season. Plants are hardy, grafted sure to bloom. A "must" for formal gardens.

PRICES: \$3.50 each; 2 for \$6.00.

COVERED WITH BEAUTY



Pachysandra

PACHYSANDRA

Low, dense growing. One of the most useful evergreen ground covers. Easy to grow, "Japanese Spurge" is ideal for banks or places where it is difficult to grow grass. In early spring, terminal spikes of white flowers open.

PRICES: 2-yr., 45c each, 5 for \$2.00; 10 for \$3.50.

CREeping MYRTLE

(Vinca Minor) has shining evergreen leaves with attractive violet-blue flowers which appear in early spring. Very hardy. An ideal ground cover, especially for shady places.

PRICES: 25c each; 5 for \$1.00; 10 for \$1.70.



AMERICAN HOLLY

SEDUM Stonecrop

A ground covering for dry infertile soil. Wonderful for filling crevices and rock strewn areas. Succeeds in almost any position—on made rock walls—or ruins, in mixed borders. Green creeping compact mats. Small yellow flower in mid-summer. **PRICES:** 25c each; 3 for 65c; 6 for \$1.15; 12 for \$2.00.



HAHN'S ENGLISH IVY

Native of Europe, these self-branching vines are extremely pretty for the home porch box or hanging basket. Hahn's Ivy is a rapid growing plant which takes little care. These plants are not a bit fussy about the soil. Live up the home with a living plant, which will lend a decorative scheme wherever planted.

PRICES: 65c each; 3 for \$1.50.



Creeping Myrtle

(Ilex Opaca) This Holly Tree is now acclimated to northern climates. Beautiful evergreen tree with broad, Oak-like, shiny leaves. What a contrast when the red berries appear in the fall. These berries remain on the branches nearly all winter. The tree is a moderate grower and provides a year-round beauty. **PRICES:** 65c each; 3 for \$1.50; 6 for \$2.75.

5 ON 1

NEW

SENSATION Flowering Peach

BLOSSOMS

3 color

LEAVES

2 color

NATURE'S NEW WONDER 5 ON 1. Truly a splendor of beauty, gorgeous three different colored blossoms blooming at one time, before the leaves appear, resembling a large mixed bouquet. After these showy blooms have fallen, the tree is a profusion of bright red and lustrous green leaves. An ornamental tree that will add distinction to your planting. This beauty of a tree took years to perfect and now you may enjoy the FIVE ON ONE unusual, colorful beauty on your lawn. Hardy, easy to grow tree. Supply limited - order at once and reserve this unique tree bearing three colored blossoms and two colored leaves.

PRICES: 2-3 ft., \$3.95 each; 2 for \$7.50.



EVERGREENS They Grow In Beauty

SPREADING EVERGREENS

UPRIGHT EVERGREENS



PFITZER JUNIPER

Low horizontal growing evergreen with bluish tint, foliage of a fine texture. This very graceful evergreen is particularly useful for foundation plantings, in rock gardens, and in front of taller evergreens. Excellent for under window plantings. PRICES: 8-10" \$1.00 each; 2 for \$1.75. 10-12" \$2.00 each; 2 for \$3.75. 15-18" \$3.00 each; 2 for \$5.50.

TAXUS CUSPIDATA

This spreading Japanese Yew branches out from the bottom with a foliage of deep green. May be kept sheared for a low hedge, allowed to grow its graceful wand-like branches for informal corner plantings, or trimmed into compact shape for formal effect. Crimson berries appear in the fall. PRICES: 15-18 in., heavy transplants, \$3.50 each; 3 for \$6.50; 18-24 in., \$5.50 each; 2 for \$10.00.

BLUE EVERGREENS

COLORADO BLUE SPRUCE. Its steel-blue, glistening foliage makes it desirable for lawn or group planting. Nice husky trees; will make a rapid growth. They have a wonderful root system, twice transplanted. Prices: 10-12 in., 75c each; 3 for \$2.00. 15-18 in., \$3.00 each; 2 for \$5.50.

SILVER BLUE PFITZER. (U. S. Plant Patent No. 442.) Most Striking Evergreen Ever Introduced. A new Pfitzer with a silvery blue color that is as intense and even as the Koster Blue Spruce. Has all the fine qualities of the well known green Pfitzer. Grows a little more compact. Foliage is slightly finer. Entirely hardy anywhere. It's beautiful. Get yours now. Prices: 10-12 in., \$1.50 each; 2 for \$2.95.

IRISH JUNIPER

Very symmetrical in outline. Fine green foliage growing not more than 8-10 feet in height. Ideal for corner.

PRICES: 24-30 in., \$2.25 each; 2 for \$4.25; 4 for \$8.00.

AMERICAN ARBOR-VITAE

Thick and compact with a broad base tapering to a point. Popular evergreen for hedge, screen, lawn specimen, or for corners.

PRICES: 2-3 ft., \$2.25 each; 2 for \$4.00; 4 for \$7.50.

NORWAY SPRUCE

Its tall, drooping, dark somber green color makes this evergreen a true ornamental planting. Thoroughly hardy, robust and thrifty both on damp and higher dry soil. Excellent windbreak.

PRICES: 12-15 in., \$1.00 each; 2 for \$1.75. 15-18 in., \$1.50 each; 2 for \$2.50.

PYRAMIDAL ARBOR-VITAE

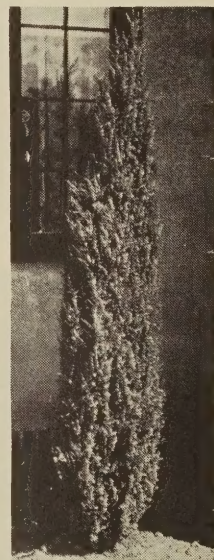
One of the leading upright evergreens, excellent for doorways and corner plantings. Grows rapidly, will attain a height of 15 feet but seldom ever 2 feet in diameter. The bright green fan-like foliage grows in a narrow shapely pyramid, easy to keep trimmed.

PRICES: 12-18 in., Heavy transplants, \$1.75 each; 2 for \$3.00.

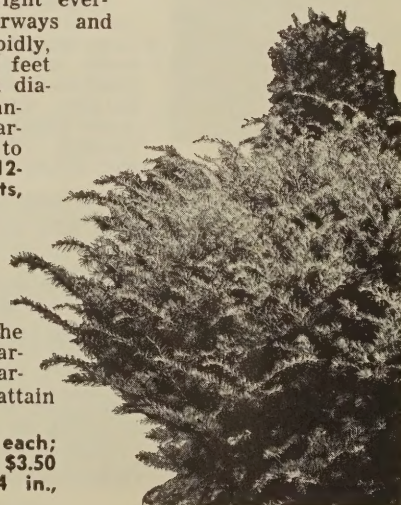
HICKSI YEW

The numerous branches ascend almost vertically; color is rich, dark glossy green; and the habit of growth is very narrow and columnar. Very hardy. At full maturity will attain height of about 15 feet.

PRICES: 12-15 in., \$3.00 each; 2 for \$5.50. 15-18 in., \$3.50 each; 2 for \$6.00. 18-24 in., \$4.00 each; 2 for \$7.50.



Irish Juniper



Westhouser's Special

FOLKS * * A REAL BARGAIN
ON HARDY NORTHERN GROWN NURSERY STOCK

BABY EVERGREENS

Japanese Yews

6"-8"
3 10 50
\$1.90 \$5.50 \$22.50

Postpaid, Net, No Discount

BLUE HEDGING

Blue Leaf Willow

10 50 100
\$2.50 \$11.00 \$20.00

Blue Mist

10 50 100
\$4.50 \$22.00 40.00

Postpaid, Net, No Discount

HEDGING SPECIAL

Baby Privet

10 50 100
6"- 8" \$1.20 5.00 8.00
8"-10" 1.50 6.00 10.00

Postpaid, Net, No Discount

GRAPE SPECIAL

Concord, Fredonia Niagara

1-yr. No. 1
25 50 100
\$5.40 \$9.00 \$14.40

Not Postpaid,
Net, No Discount

FLOWERING SHRUB

Forsythia (Golden Bell)

5 10 25
\$1.50 \$2.50 \$5.50

French Pussy Willow

5 10 25
\$1.25 \$2.20 \$5.00

Postpaid, Net, No Discount

TRIPLE BEAUTY

Smoke Tree—98c
White Dogwood—98c
Red Leaf Peach—98c

3 for \$2.75 Net

AUTUMN GLORY

1 Red Mum
1 Bronze Mum
1 Pink Mum
1 Yellow Mum
1 White Mum
1 Blue Aster

6 Beauties for Only \$1.99
Postpaid, Net

LARGE SIZE SHRUBS

Hydrangea 3-4 ft.
Forsythia 3-4 ft.

6 10 25
\$4.80 \$7.50 \$17.50

Not Postpaid, Net

GIANT LANDSCAPE TREES

Mt. Ash or White Birch

2 5 10
8-10 ft. \$8.00 19.00 32.00
10-12 ft. 9.00 20.00 35.00

Not Postpaid, Net

RA-PID-GRO

THE MIRACLE PLANT FOOD - Keep A Yard Of Beauty With A Few Gallons

Ra-pid-gro is a complete concentrated plant food formula containing Vitamin B-1, B-2, plus 11 other plant food elements. No fuss- no muss- just add water at the rate of 1 lb. of ra-pid-gro to 22 gallons of water. Dissolves at once and is ready to use. If smaller amounts are desired, mix 1 tbs. to 1 qt. of water. Ra-pid-gro, known as "The Plant Blood Donor", will work miracles in promoting growth on all types of plants. Use it around trees, evergreens, shrubs, perennials. Use it on your lawn. Use it on your vegetables. **Prices 1-lb. bag, \$1.25; 2-lb. bag, \$2.35; 5-lb. bag, \$4.50; Net, no discount.** Postpaid in Michigan, Ohio, Wisconsin, Illinois, and Indiana. Elsewhere add 5c per pound for postage.

PLANTING BOOK

Full of valuable information on planting, pruning, and general care of plants, shrubs, trees, etc. Illustrations on how to plant your nursery stock. Everyone interested in plants should have this book.

PRICE: 15c. Net, no discount.

3 Enchanting Trees

**SENSATIONAL SMOKE TREE
GRACEFUL WHITE BIRCH
COLORFUL MT. ASH**

SMOKE TREE

The Smoke Tree known as (Purple Fringe) is an enchanting tree-like shrub. In midsummer this sensational tree is enveloped with showy masses of purplish misty flowers resembling beautiful clouds of drifting smoke. The attractive green foliage colors beautifully in the fall with brilliant scarlet and golden autumn colors. This tree becomes more attractive each passing year. A hardy recognized garden beauty, attaining a height of fifteen feet at maturity. This picturesque tree will glorify any lawn; plant one this season and watch the sensational developments; be the proud owner of the Aristocratic beauty which will win the admiration of your friends and neighbors. **PRICES:** 2-3 ft., \$1.50 each; 3 for \$3.95. 3-4 ft., \$2.25 each; 3 for \$6.00. 5-6 ft., \$3.00 each; 3 for \$8.50.



◀ EUROPEAN WHITE BIRCH

No tree has more individual and distinctive charm than this tall stately White Birch, with its gleaming white trunk and its delicate pendulous branches. The tree grows to a height of 20 to 30 feet, is thrifty, vigorous and upright. One shade tree under which grass will make good growth.

PRICES: 4-5 ft., \$1.75 each; 2 for \$3.50. 5-6 ft., \$2.25 each; 2 for \$4.50.

EUROPEAN MOUNTAIN ASH ▶

Another invigorating beauty for your lawn. From July until winter, clusters of red berries glisten among the green leaves of this hardy, medium sized tree. The tree grows to a height of 25 to 30 feet; is dense and regular. Not only does it attract the birds but folks passing by will stop to admire this colorful tree.

PRICES: 4-6 ft., \$2.25 each; 2 for \$4.00. 6-8 ft., \$2.95 each; 2 for \$5.75. 8-10 ft., \$4.75 each; 2 for \$9.00.



Westhauser's NURSERIES
THE HOME OF HARDY NORTHERN GROWN STOCK
SAWYER, MICHIGAN