

# Bats from Guerrero, Jalisco and Oaxaca, Mexico

LUIS DE LA TORRE

*Associate, Division of Mammals*

This paper is based on a small collection of bats made by the author in Guerrero and Oaxaca from July 22 to August 5, 1952, and in Jalisco from December 7 to 11, 1954. The primary objective of this collecting was to obtain additional specimens of *Sturnira* to be used for a systematic review of that genus. In sampling caves and other likely habitats, representatives of fourteen species of bats were collected, including the first series to be taken of *Enchisthenes harti*.

I am indebted to Miss Barbara Lawrence, Museum of Comparative Zoology, and to Dr. E. Raymond Hall, Museum of Natural History, University of Kansas, for the loan of specimens in their care; to Mr. R. W. Hayman, British Museum (Natural History), for comparing specimens of *Chilonycteris* with the types of *C. psilotis*; and to Mr. and Mrs. Loren P. Woods, Chicago Natural History Museum, for their kindness in making possible my visit to the interesting Jalisco region. The patient and enthusiastic help given by my wife, June, in many capacities is also gratefully acknowledged.

## LIST OF SPECIES

With the exceptions noted, the specimens from Guerrero and Oaxaca were taken in caves. Those from Ciudad Guzmán, Jalisco, were netted at night in a grove of native, small-fruit *Ficus* trees.

The measurements given are in millimeters and, unless otherwise indicated, apply to the entire series. The average measurement, when given, is followed by the extremes in parentheses.

### **Balantiopteryx plicata plicata** Peters

*Balantiopteryx plicata* Peters, 1867, Monatsb. Preuss. Akad. Wiss. Berlin, 1867: 476.

*Type locality*.—Puntarenas, Puntarenas, Costa Rica.

*Specimens collected*.—Total 32 (2 skins with skulls, 30 in alcohol). GUERRERO: 5 mi. NW. of Acapulco (12 males, 14 females); 12 mi. S. of Mexcala (1 female). OAXACA: Tehuantepec (5 young females).

*Measurements*.—Forearm of males from Acapulco 41.3 (40.0–43.0), females 42.6 (40.0–46.0); female from Mexcala 41.8.

### *Chilonycteris rubiginosa mexicana* Miller

*Chilonycteris mexicana* Miller, 1902, Proc. Acad. Nat. Sci. Philadelphia, **54**: 401.

[*Chilonycteris*] *p[arnellii] mexicana*, Koopman, 1955, Jour. Mamm., **36**: 112.

*Type locality*.—San Blas, Nayarít, Mexico.

*Specimens collected*.—Total 8 (2 skins with skulls, 6 in alcohol). GUERRERO: 5 mi. NW. of Acapulco (7 males, 1 female).

*Measurements*.—Forearm of males 57.3 (55.7–58.8), female 59.5.

*Remarks*.—It cannot be established that *parnelli* Gray 1843 has priority over *rubiginosa* Wagner 1843. The issue of the Proceedings of the Zoological Society of London where the name *parnelli* first appears is dated April 11, 1843, as shown by Koopman (Jour. Mamm., 1955, **36**: 111), but the actual date of publication is October of that year (Duncan, Proc. Zool. Soc. London, **1937**: 79). The name *rubiginosa* appears in the Archiv für Naturgeschichte after a paper read in August, but the exact date of publication is not known. In the absence of conclusive evidence, the better known and more widely used name *rubiginosa* should be retained.

### *Chilonycteris psilotis* Dobson

*Chilonycteris psilotis* Dobson, 1878, Cat. Chirop. Brit. Mus., p. 451. Miller, 1902, Proc. Biol. Soc. Washington, **15**: 249—Isthmus of Tehuantepec, Mexico.

*Chilonycteris personata*, J. A. Allen (not Wagner), 1911, Bull. Amer. Mus. Nat. Hist., **30**: 263. G. M. Allen, 1935, Jour. Mamm., **16**: 227. Dalquest and Hall, 1949, Jour. Mamm., **30**: 425. Davis and Russell, 1952, Jour. Mamm., **33**: 234; 1954, op. cit., **35**: 67.

*Chilonycteris torrei continentis* Sanborn, 1938, Occ. Pap. Mus. Zool., Univ. Michigan, no. 373: 1—Laguna de Zotz, Petén, Guatemala (*type locality*).

*Type locality*.—Here designated as Tehuantepec, Oaxaca, Mexico.

*Specimens collected*.—Total 3 (2 skins with skulls, 1 in alcohol). GUERRERO: 5 mi. NW. of Acapulco (3 males).

*Measurements*.—Forearm 42.5, 43.2, 44.0.

*Remarks.*—These specimens agree with the type of *C. torrei continentis* Sanborn, and with Guatemala specimens that are identical with the types of *psilotis*. Additional representatives of *psilotis* have been examined from Mexico, Central America, and Venezuela. Inasmuch as it has not been demonstrated that *C. psilotis* and the Brazilian *C. personata* are conspecific, the name *psilotis*, rather than *personata*, should be used for the small, mainland *Chilonycteris*.

### **Pteronotus davyi fulvus** Thomas

*Chilonycteris davyi fulvus* Thomas, 1892, Ann. Mag. Nat. Hist., (6), 10: 410.

*Type locality.*—Las Peñas, Jalisco, Mexico.

*Specimens collected.*—Total 11 (in alcohol). GUERRERO: 5 mi. NW. of Acapulco (9 males, 2 females).

*Measurements.*—Forearm, males 44.1 (43.2–45.5), females 44.0, 45.0.

### **Mormoops megalophylla megalophylla** Peters

*Mormoops megalophylla* Peters. 1864, Monatsb. Preuss. Akad. Wiss. Berlin, 1864: 381.

*Type locality.*—Southern Mexico.

*Specimens collected.*—Total 27 (in alcohol). GUERRERO: 5 mi. NW. of Acapulco (27 males, no females found).

*Measurements.*—Forearm 54.9 (53.0–59.0).

### **Micronycteris megalotis mexicana** Miller

*Micronycteris megalotis mexicana* Miller, 1898, Proc. Acad. Nat. Sci. Philadelphia, 50: 329.

*Type locality.*—15 mi. S. of Ciudad Guzmán, Platanar, Jalisco, Mexico.

*Specimens collected.*—1 (in alcohol). JALISCO: 2 mi. N. of Ciudad Guzmán (1 female).

*Measurements.*—Forearm 36.3.

### **Glossophaga soricina leachi** Gray

*Monophyllus leachii* Gray, 1844, Voyage of the Sulphur, Zool., 1: 18.

*Type locality.*—Realejo, Nicaragua.

*Specimens collected.*—Total 9 (in alcohol). GUERRERO: 5 mi. NW. of Acapulco (6 males, 3 females).

*Measurements.*—Forearm 36.3 (35.0–37.5).

*Remarks.*—One specimen was taken in a mouse trap baited with ripe banana.

### **Leptoncyteris nivalis nivalis** Saussure

*M*[=*Ichnoglossa*] *nivalis* Saussure, 1860, Rev. Mag. Zool., Paris (2), 12: 492.

*Leptoncyteris nivalis yerbabuena* Martinez and Villa, 1940, An. Inst. Biol. Univ. Nac. México, 11: 313—Yerbabuena, Guerrero, Mexico (type locality).

*Type locality.*—Near snow line on Mount Orizaba, Veracruz, Mexico.

*Specimens collected.*—1 (in alcohol). GUERRERO: 12 mi. S. of Mexcala (1 male).

*Measurements.*—Forearm 54.0.

*Remarks.*—This specimen, a topotype of *yerbabuena*, is indistinguishable from a topotype of true *nivalis* from Orizaba. In size, it also agrees with specimens from Colima, but is smaller than those from Nuevo León, Texas, and Arizona. A size cline from North to South is indicated.

### **Artibeus jamaicensis jamaicensis** Leach

*Artibeus jamaicensis* Leach, 1821, Trans. Linn. Soc. London, 13: 75.

*Type locality.*—Jamaica.

*Specimens collected.*—Total 5 (in alcohol). JALISCO: 2 mi. N. of Ciudad Guzmán (3 males, 2 females).

*Measurements.*—Forearm 58.0 (55.5–60.0).

*Remarks.*—All specimens in the series have the third upper molar.

### **Artibeus cinereus toltecus** Saussure

*Stenoderma tolteca* Saussure, 1860, Rev. Mag. Zool., Paris, (2), 12: 427.

*Type locality.*—Mirador, Veracruz, Mexico.

*Specimens collected.*—Total 8 (in alcohol). JALISCO: 2 mi. N. of Ciudad Guzmán (5 males, 3 females).

*Measurements.*—Forearm 40.0 (37.0–42.0).

*Remarks.*—The palate in two individuals appeared abnormally wide, and the arrangement of the upper teeth (pl. 30, fig. 1) differed significantly from the normal condition in *Artibeus cinereus* (pl. 30, figs. 4, 5, 6). Study of the skulls revealed that they were of extreme age, and the labial edge of the maxillary bone had been eroded (pl. 30, fig. 2) leaving a good part of the roots unprotected. It is probable that if this weakened condition develops early in life, the



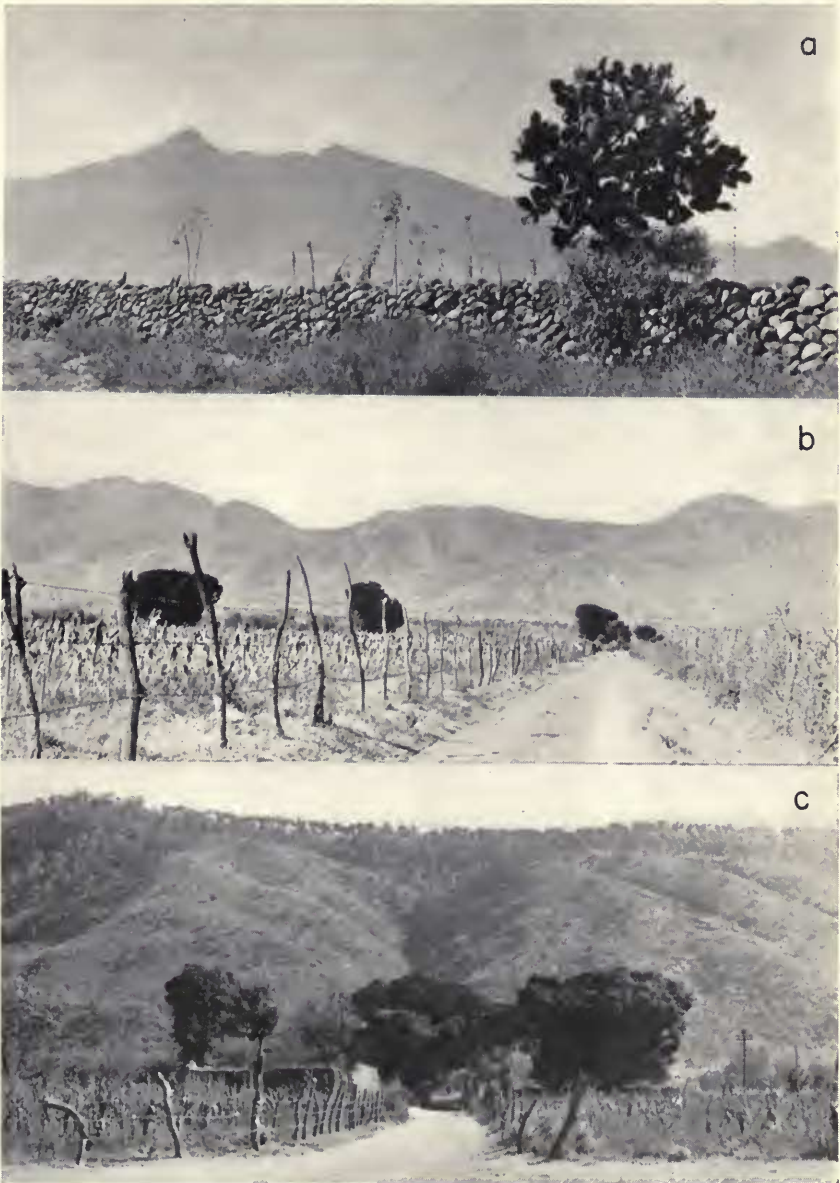


FIG. 146. *a*, View from the Ciudad Guzmán basin to the southwest. Volcán de Colima in the distance. *b*, View of basin showing scattered fig trees frequented by fruit-eating bats. *c*, Eastern edge of basin showing feeding habitat of *Enchisthenes harti*, *Artibeus j. jamaicensis*, *A. cinereus toltecus*, *Sturnira lilium parvidens*, and *Micronycteris megalotis mexicana*.

lateral mastication movements very likely would alter the alignment of the teeth and cause them to flare out as in this case (pl. 30, fig. 3).

### **Enchisthenes harti** Thomas. Plate 31.

*Artibeus harti* Thomas, 1892, Ann. Mag. Nat. Hist., (6), 10: 408.

*Enchisthenes harti*, Sanborn, 1932, Ann. Carnegie Mus., 21: 179—Venezuela (skin and skull); Goodwin, 1940, Amer. Mus. Nov., no. 1075: 2—Honduras (skin and skull); Ecuador (incomplete skulls from owl pellets); Goodwin, 1954, Amer. Mus. Nov., no. 1689: 5—Tamaulipas, Mexico (incomplete skull).

*Type locality*.—Trinidad, British West Indies.

*Specimens collected*.—Total 12 (1 skin with skull, 11 in alcohol). JALISCO: 2 mi. N. of Ciudad Guzmán (8 males, 4 females).

*Measurements*.—Forearm 39.8 (38.2–43.1); greatest length of skull, of a male and two females 20.4, 20.9, 20.9; condylobasal length 18.8, 19.0, 19.0; zygomatic breadth 12.1, 12.2, 12.1; mastoid breadth 10.8, 10.7, 10.6; palatal length 9.0, 9.8, 9.1; postorbital constriction 5.4, 5.6, 5.3; maxillary tooth row 6.8, 7.0, 6.9; greatest width across molars 8.4, 8.6, 8.3; length of mandible 13.1, 13.4, 13.9; lower canine to condyle 12.9, 13.2, 13.5; mandibular tooth row 7.3, 7.5, 7.3.

*Remarks*.—*E. harti*, previously known from only three complete specimens, was common in the *Ficus* groves (fig. 146, c) near Ciudad Guzmán. This village lies in a basin rimmed by the Sierra Nevada de Colima on the west (fig. 146, b), and by lower, pine covered hills on the east (fig. 146, c).

The feeding habits of *Enchisthenes*, judging from the individuals observed, probably make it a rather easy prey of owls. The fruit eaten in this area is small, about a centimeter in diameter. It is quickly snipped from the tree in flight, and carried to a convenient branch where it is eaten. The forearms are used to handle and turn the fruit as parts of it are consumed, and it is in these movements that the exposed bat probably is seen by its predators.

It is interesting to note that *E. harti* and *Sturnira lilium parvidens*, both tropical species, were taken on one occasion when the temperature was only 36° F.

### **Desmodus rotundus murinus** Wagner

[*Desmodus*] *murinus* Wagner, 1840, Schreber's Saugth., Suppl., 1: 377.

*Type locality*.—Mexico.

*Specimens collected.*—Total 2 (in alcohol). GUERRERO: 5 mi. NW. of Acapulco (1 male, 1 female).

*Measurements.*—Forearm, male 58.2, female 60.6.

### **Molossus sinaloae** Allen

*Molossus sinaloae* Allen, 1906, Bull. Amer. Mus. Nat. Hist., 22: 236.

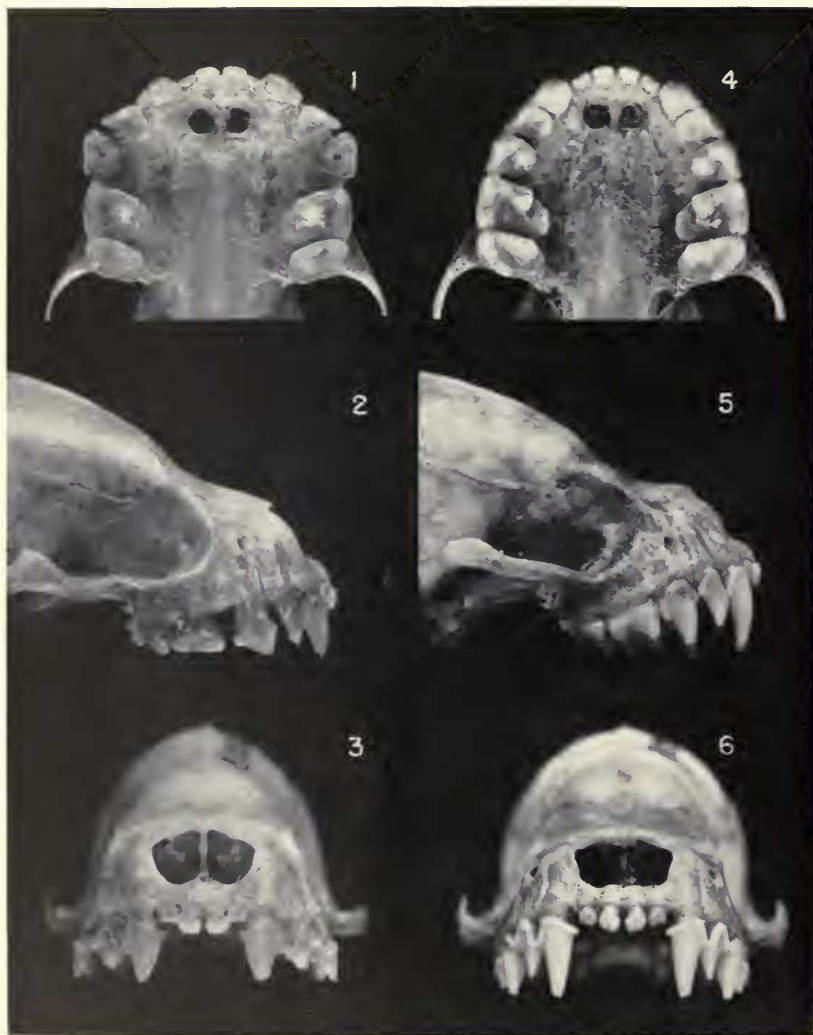
*Type locality.*—Esquinapa, Sinaloa, Mexico.

*Specimens collected.*—Total 9 females (in alcohol). GUERRERO: 15 mi. NW. of Acapulco.

*Measurements.*—Forearm 47.9 (46.5–49.8).

*Remarks.*—These specimens were taken under the dry fronds of a coconut palm.

Miller and Kellogg (1955, U. S. Nat. Mus. Bull. 205: 119) follow G. M. Allen in regarding *sinaloae* a race of *rufus* Geoffroy. *M. sinaloae*, however, is a medium size species and is distinct from the larger *M. rufus* of which *nigricans* Miller is the northern race. *M. r. nigricans* and *M. r. rufus* differ only in average size, while *M. sinaloae* can always be separated from *M. rufus* on absolute characters.



Palate, maxilla and rostrum of *Artibeus cinereus toltecus*: 1-3, distorted condition in female of extreme age; 4-6, normal condition in adult female.  $\times 4$ .



*Enchisthenes harti*: 1, mandible; 2, ventral surface of skull; 3, dorsal surface of skull.  $\times 4$ .





# Index

Principal discussion and all new names indicated by **bold-faced** type.

- Abo Formation 389  
Abraeinae 605, **610**  
Abraeus 601  
    *acicularis* 620  
    *phyllobius* 620  
    *punctiger* 624  
    *vididulus* 601  
*abruptum*, *Platysoma* 629  
*aburri*, *Aburria* 21  
*Aburria aburri* 21  
*acanthognathus*, *Lophodolus* 299  
*Acanthotermes* 468, 486, 512  
*Achalinus spinalis* 174  
*acicularis*, *Abraeus* 620  
    *Bacanius* 605, 606, **620**  
*Aciculitermes* 515  
**acme**, *Bulimulus* 325  
*Acorhinotermes* 469, 493, 509  
*Acritus* 602, 605  
    *biloculatus* 612  
    *caledoniae* 605, 607, **612**, 614  
    *lilliputianus* 612  
    **schmidti** 605, 607, 612, 614  
actinopterygians 388  
*Actitis macularia* 154  
*aculeatus*, *Argyropelecus* 275  
*acuminata*, *Erolia* 154  
*acunhae*, *Nesospiza* 147, 152  
    horny palate 151  
*acutirostris*, *Calamaria* 199  
*Adioryx* 126  
    *Holocentrus* 92, **109**  
Admiral Formation 389  
*adusta*, *Nenia* 305  
    **tumens**, *Nenia* 305  
*aegyptiaca*, *Tadarida* 595  
*aegyptiacus*, *Rousettus* 595  
*Aeletes* 620  
    **crenatus** 605, 606, **610**  
    *daubani* 610  
    *laevis* 610  
    *longipes* 614  
    *politus* 610  
*aequatorialis*, *Penelope* 17  
*aequinoctialis*, *Succinea* 305  
*Afrosbulitermes* 515  
*agilis*, *Mus* 648  
*Agouti paca* 215  
*Ahamitermes* 469, 503, 510  
*Ailuropoda* 44  
  
*Aistopoda* 531  
*Akodon aerosus* 234  
    *berlepschii* 231  
    *jelskii* 254  
    *pulcherrimus* 227  
    *pyrrhotis* 228  
    *nigrita* 237  
**akodoni**, *Amblyopinus* 228  
*alatus*, *Lampanyctus* 289  
*alba*, *Egretta* 153  
    *Monopterus* 53, **59**  
    *Muraena* 59  
*alberti*, *Craz* 17  
albinism, in cracids 19  
*albiventer*, *Calamaria* 199  
*albopunctata*, *Calamaria* 199  
*alidae*, *Calamaria* 200  
*Allodotermes* 473, 513  
*Allognathotermes* 511  
*alstoni*, *Neotomodon* 547  
**alticolus**, *Edrabius* 259  
*amabilis*, *Argyropelecus* 276  
*amazonicus*, *Holochilus* 659, 667  
    *brasiliensis* 667, 669  
*Ambassia*, ecological distribution 81  
    *gymnocephalus* 52, 54, 71  
    *interrupia* 52ff, 71  
        ecological distribution 82  
        food 71, 84  
    *nalua* 53, 72  
    predator of 68  
*Amblyopininae* 211ff  
*Amblyopinini* 221  
**Amblyopinodes** 216, 218, 220, 222, **247**  
    *claviger* 249  
    *gahani* 248  
    **peruvianus** 250  
    *piceus* 248  
    *similis* 251  
    *travassosi* 249  
*Amblyopinus* 212, 214, 216-18, 220, **221**  
    **akodoni** 228  
    **ancashi** 232  
    *angustus* 247  
    *bequaerti* 247  
    *brandesi* 227  
    *chilomysi* 239  
    *colombiae* 231  
    **emarginatus** 239  
    *fuergensis* 216, **237**

- henseli* 212, 247  
*herskovitzi* 238  
*huilae* 242  
*jelskii* 212, 224  
*kalinowskii* 243  
*kofordi* 231  
*longus* 234  
*marmosae* 247  
*monticolus* 228  
*montivagans* 240  
*oryzomys* 240  
*pacae* 244  
*punae* 227  
*sanborni* 238  
*schmidti* 231  
*spinipennis* 234  
*waterhousei* 219, 243  
*amblyurus*, *Hemirhamphus* 67  
*Zenarchopterus* 52ff, 67  
    food 67, 84  
*americanus*, *Ursus* 25  
*Amiatermes* 467, 469, 472, 473, 477, 480, 483, 485, 488, 491, 493, 501, 503, 510  
Amiatermitinae 493, 505, 506, 510, 516, 562  
*amoenus*, *Neomyripistis* 94  
Amphibia, apsidospondylous 388  
    lepospondylous 388  
Amphicyodontinae 44  
*amplus*, *Peromyscus difficilis* 547  
Ampullariidae 303  
*Ampullarius* (*Ampullarius*) *bridgesii* 304  
    *insularum* 304  
    *papyraceus* 303  
    (*Limnopomus*) *crassus* 303  
    *nubilus* 303  
Anabantoidea, ecological distribution 83  
*Anacanthotermes* 473, 482, 509  
*anale*, *Scopelarchus* 284  
*Anapleus* 601  
Anatidae 153  
*ancashi*, *Amblyopinus* 232  
*Ancistrotermes* 513  
*andium*, *Radiodiscus* 308  
*andivaga*, *Streptaxis* 329  
    *Systrophia* 308  
*andoicus*, *Bulimulus* 324  
*Angelosaurus* 395, 398  
*angouya*, *Mus* 660  
    *Oryzomys* 654  
*angrandi*, *Bulimulus* 315  
    *kalinowskii*, *Nenia* 306  
    *Nenia* 306  
    *urubambensis*, *Nenia* 306  
*Anguilla borneensis* 52ff, 58  
    ecological distribution 82  
    food 58, 84  
    predator of 62  
*Angularitermes* 469, 495, 497, 514  
*Angulitermes* 471, 485, 501, 512  
    *angustus*, *Amblyopinus* 247  
    *anguya*, *Holochilus* 647  
    *Mus* (*Holochilus*) 648, 660, 666  
*Anodontostoma chacunda* 52, 53, 55  
*Anomodontia* 387, 398  
    distribution, geographic 390  
    geologic 390  
*Anoplogaster cornuta* 292  
Anoplogastridae 292  
*Anoplotermes* 472, 484, 491, 493, 500, 510  
*Anthias maculatus* 73  
*apaporiensis*, *Caiman sclerops* 340  
*Apicotermes* 473, 485, 511  
*Apilitermes* 511  
*Apobletes* 628  
    *appendiculata* 627  
    *montrouzieri* 605, 607, 627  
*Apocryptes brachypterus* 78  
    *rictuosus* 80  
Apoda 531  
Apodes, ecological distribution 83  
*Aporodon* 644  
*appendiculata*, *Apobletes* 627  
*apraeocularis*, *Calamaria* 200  
*arborifera*, *Linophryne* 300  
*Archotermopsis* 468, 470, 482, 507, 509  
*Arctibeus lineatus* 409  
*Arctotherium* 25  
*arenarius*, *Miniopterus natalensis* 595  
*Argas* 579ff  
    *boueti* 580, 594, 598  
    (*Chiropterargas*) *boueti* 580  
    *confusus* 579, 586, 594, 598  
    *vespertilionis* 586, 596, 598  
*Argasidae* 579  
*argenteus*, *Diretmus* 292  
*argentimaculata*, *Sciaena* 73  
*argentimaculata*, *Lutianus* 54, 55, 73  
    food 84, 85  
*argentinus*, *Edrabius* 258  
*argus*, *Chaetodon* 75  
    *Scatophagus* 52, 54, 55, 75  
*argyromus*, *Myripistis* 136  
*Argyropelecus aculeatus* 275  
    *amabilis* 276  
    *hemigygnus* 274  
Ariidae, ecological distribution 86  
Ariophantidae 308  
*Arius caelatus* 64  
    *venosus* 65  
*arkansas*, *Catapleura* 377  
*armatus*, *Neoniphon* 94  
*Armitermes* 495, 514  
Arroyo Formation 389  
    fauna 390ff  
*artensis*, *Saprinus* 605, 608, 609  
*arthuri-muelleri*, *Rugitermes* 576  
*Artibeus cinereus toltecus* 698  
    *harti* 700  
    *jamaicensis jamaicensis* 698  
    *vittatus* 405

- ascendens*, *Bulimulus derelictus* 317  
*ascensionis*, *Holocentrus* 93, **100**, 106,  
 122, 134  
     *Perca* 100  
*Asellia tridens tridens* 595  
*assimilis*, *Carcinops* 619  
*Astronesthes leucopogon* 278  
 Astronesthidae 278  
*atahualpa*, *Epiphragmophora* 327  
*atavus*, *Tretomys* 646  
*ataxus*, *Bulimulus* 320  
*ater*, *Lampanyctus* 288  
*atlantica*, *Evermannella atrata* 284  
*atlanticus*, *Diogenichthys* 286  
     *Tetragonurus* 298  
*Atlantisia* 158, 159  
     *rogersi* 142  
*Atractaspis* 168  
*Atractus* 168  
*attractus*, *Beloholocentrus* 95  
*atrata atlantica*, *Evermannella* 284  
*atrum*, *Cyema* 291  
*attenuata*, *Vinciguerra* 273  
*auritus christiei*, *Plecotus* 595  
     *Reithrodon* 646  
*australasiae*, *Saprinus* 609  
 Australian region, termite fauna of 470,  
 476, 508ff  
*Australitermes* 469, 477, 503, 515  
 Autunian fauna 389ff  
  
*Bacanius* 602, 605  
     *acicularis* 605, 606, **620**  
     *fauveli* 605, **622**, 624, 625  
     *hamatus* 620  
     *punctiger* 605, 606, 622, **624**, 625  
     *remingtoni* 605, 606, 622, **624**  
     *sulcisternus* 620  
*Bagrus nemurus* 65  
*Balantiopteryx plicata plicata* 695  
*balbo*, *Evermannella* 284  
*balnearum*, *Holochilus* 656, 661, 665  
     *Holochilus brasiliensis* 665  
*Barbodes sealei* 62  
*Barbus elongatus* 62  
*Bartramia longicauda* 154  
*Basidentitermes* 512  
*Bathophilus metallicus* 281  
 Bathylagidae 284  
*Bathylagus glacialis* 284  
*bathyphila*, *Lampadena* 288  
*bathyphilum*, *Gonostoma* 272  
 bats, ticks of 579ff  
*Beanea* 95  
     *trivittata* 95  
*beani*, *Serrivomer* 291  
*beccari*, *Calamaria* 200  
 Belle Plains Formation 389  
*Beloholocentrus* 95  
     *attractus* 95  
*Belone strongylura* 66  
*benjaminsi*, *Calamaria* 200  
  
*benoiti*, *Hygophum* 285  
*Benthodesmus simonyi* 298  
*bequaerti*, *Amblyopinus* 247  
*berbicensis*, *Holochilus* 661  
     *Holochilus brasiliensis* 655, **669**  
*berlepschi*, *Crypturellus cinereus* 15  
*Beryciformes* 121  
*Betta unimaculata* 53, 54, **70**  
     ecological distribution 82, 86  
     food 70, 84  
*bibulbosus*, *Eustomias* 282  
*bicolor*, *Calamaria* 192, 200  
*bicornis*, *Ceratostethus* 52, 54ff, 68  
     *Linophryne* 300  
     *Neostethus* 68  
**bidentatus**, *Urotraiinus* 563, 564  
*bigelowi*, *Eustomias* 282  
*bikolana*, *Vaimosa* 79  
*bikolanus*, *Pseudogobius* 52, 54, **79**  
*biloculatus*, *Acritus* 612  
*bitaniatus*, *Thaumastius* 309  
*bitorques*, *Calamaria* 200  
*blakfordi*, *Yarella* 272  
*boa ferox*, *Stomias* 278  
*boddaerti*, *Boleophthalmus* 55, **80**  
     food 80, 85  
     *Gobius* 80  
*Boleophthalmus boddaerti* 55, **80**  
     food 80, 85  
*bonapartei*, *Nothocercus* 12  
*Bonapartia pedialota* 269  
*borneensis*, *Anguilla* 52ff, **58**  
     ecological distribution 82  
     food 58, 84  
     *Calamaria* 177ff, **194**, 200  
     *Gastromyzon* 64  
     *Neostethus* 52, 54ff, **69**  
 Borneo, North, fishes of 47ff  
 Borneo Zoological Expedition 47ff  
*boucardi*, *Crypturellus* 16  
*boueti*, *Argas* **580**, 594  
*boylli levipes*, *Peromyscus* 545  
*brachygnathus*, *Rhinolophus clivosus* 595  
*Brachygobius doriae* 52, 77  
     food 77, 85  
*brachypterus*, *Apocryptes* 78  
     *Holocentrus* 109  
     *Gobiopterus* 55, 78  
*brachyrhynchus*, *Rhynchichthys* 93  
*brachyura*, *Calamaria* **192**, 200  
*brachyurus*, *Doryichthys* 55, 67  
     *Syngnathus* 67  
*brandesi*, *Amblyopinus* 227  
*brasiliensis amazonicus*, *Holochilus* 667  
     *balnearum*, *Holochilus* 665  
     *berbicensis*, *Holochilus* 655, **669**  
     *brasiliensis*, *Holochilus* 662  
     *guianae*, *Holochilus* 668  
     *Hesperomys (Holochilus)* 666  
     *Holochilomy* 662  
     *Holochilus* 645, 648, 653, 654, 657,  
     **658**, 660, 661, 666

- incarum*, *Holochilus* 668  
*leucogaster*, *Holochilus* 648, 665  
*Mus* 660, 662, 663, 667  
*nanus*, *Holochilus* 666, 669  
*vulpinus*, *Holochilus* 661  
*braueri*, *Cyclothone* 272  
Brazil, shells from 303ff  
*brevibarbatulus*, *Stomias* 279  
*brevidentatus*, *Serrivomer* 291  
*bridgesii*, *Ampullarius* 304  
**bridwelli**, *Spalacotheroides* 690  
*brookii*, *Calamaria* 179  
*bruegeli*, *Calamaria* 185, 187  
*brunnescens*, *Penelope* 17  
*Bubulcus ibis* 153  
*buccinatus*, *Oryzomys* 654, 660  
Buchen, Walter 140  
**buchi**, *Calamaria* 195, 200  
*buckleyi*, *Odontophorus gujanensis* 21  
*Bulbitermes* 481, 514  
*Buliminus aegyptiacus* 429, 432  
*chondriiformis* 419  
*heptodon* 429  
*septedentatus* 422  
*sexdentatus* 436  
Bulimulidae 309, 331  
*Bulimulus acme* 325  
*andoicus* 324  
*angrandi* 315  
*(Atarax) infundibulum* 320  
*infundibulum umbilicatellus* 320  
*perforatus* 320  
*cereicola* 317  
*culmineus* 315  
*dentritus* 319  
*derelictus* 317  
*elatus* 324  
**extensus** 323  
*(Geoceras) veruculum* 320  
*(Geopyrgus) turritus* 336  
*hamilloni* 325  
*infundibulum* 320  
*umbilicatellus* 320  
*jacosensis* 322  
*(Lissoacme) cereicola* 317  
*dentritus* 319  
*derelictus ascendens* 317  
*modestus* 318  
*reconditus* 320  
*rudistriatus* 318  
*scutulatus* 319  
**longitudinalis** 316  
*modestus* 318  
*mutabilis* 334  
*nemorensis* 316  
*obeliscus* 322  
*(Peronaeus) acme* 325  
*andoicus* 324  
*elatus* 324  
**extensus** 323  
*hamilloni* 325  
*pupiformis* 325  
**pyrgidium** 321  
*proteiformis* 335  
*proteus* 335  
*(Protoglyptus) rivassii* 336  
*pupiformis* 325  
**pyrgidium** 321  
*reconditus* 320  
*revinctus* 316  
*rivassii* 336  
*rudistriatus* 318  
*(Scutalus) angrandi* 315  
*culmineus* 315  
**longitudinalis** 316  
*mutabilis* 334  
*nemorensis* 316  
**phaeocheilus** 334  
*proteus* 335  
*revinctus* 316  
*subjussieui* 336  
*tupacii* 316  
*scutulatus* 319  
*(Spirosulcatus) endospira* 336  
*subjussieui* 336  
*tupacii* 316  
*turritus* 336  
*veruculum* 320  
*Bulimus lamelliferus* 434  
*ovularis* 422, 438  
*sauleyi* 416  
*septedentatus* 422  
**bullisi**, *Holocentrus* 91, 113  
*bungaroides*, *Calamaria* 200  
*burtoni*, *Poliospiza* 149  
*horny palate* 151  
*Butis butis* 52, 75  
*gymnopomus* 52, 55, 76  
*food* 76, 85  
*butis*, *Butis* 52, 75  
*Cheilodipterus* 75  
*caelatus*, *Arius* 64  
*Tachysurus* 55, 64  
*food* 85  
*caeruleomaculatus*, *Chelon* 53, 68  
*Mugil* 68  
*Caiman sclerops* 339  
*apartiensis* 340  
*Calamaria* 167ff  
*acutirostris* 199  
*albiventer* 199  
*albopunctata* 199  
*alidae* 200  
*apraocularis* 200  
*beccari* 200  
*benjaminsii* 200  
*bicolor* 192, 200  
*bitorques* 200  
*borneensis* 177ff, 194, 200  
*brachyura* 192, 200  
*brookii* 179  
*bruegeli* 185, 187  
**buchi** 195, 200

- bungaroides* 200  
*ceramensis* 200  
 check list 199ff  
*collaris* 201  
*crassa* 192, 201  
*curta* 191, 201  
 dentition 173ff  
*döderleini* 201  
*doerianense* 199, 201  
*egregia* 201  
*electa* 201  
*elegans* 190, 192, 201  
*everetti* 192, 201  
 food 174  
*gervaisi* 169, 176, 178, 180, 201  
     *iridescens* 182  
*gimletti* 196, 199, 201  
*göringi* 202  
*grabowskyi* 178, 189, 202  
*gracilis* 202  
*gracillima* 196, 199, 202  
*grayi* 183, 185, 188  
*griswoldi* 178, 183, 202  
     *hollandi* 202  
*hosei* 202  
*indragirica* 202  
*javanica* 202  
     *javanica* 202  
     *lineata* 196, 202  
*jeudi* 202  
*joloensis* 203  
*klossi* 203  
*lateralis* 203  
*lautensis* 178, 191, 203  
*leucocephala* 169, 176, 178, 193, 203  
*leucogaster* 169, 176, 179, 203  
     dentition 172ff  
*linnaei* 171, 195, 203  
*lowi* 178, 196, 199, 203  
*lumbricoidea* 178, 183, 189, 203  
     *griswoldi* 183, 202  
*lumholtzi* 203  
*margaritophora* 191, 192, 203  
     *gastropicta* 204  
     *margaritophora* 203  
*mearnsi* 204  
*mecheli* 204  
*melanota* 204  
*mindorensis* 204  
*mjobergi* 204  
*muelleri* 192, 204  
*nuchalis* 204  
*occipitalis* 204  
*ornata* 204  
*pavimentata* 193, 204  
     *formosana* 205  
     *pavimentata* 204  
*pendleburyi* 178, 191, 192, 205  
*pfefferi* 205  
*polillensis* 205  
*prakkei* 190, 192, 205  
*quinquetaeniata* 205  
     *raveni* 205  
     *rebutischi* 205  
     *schlegeli* 205  
     *schmidti* 174, 178, 197, 205  
     *semiannulata* 205  
     *septentrionalis* 169, 178, 194, 206  
     *simalurensis* 189, 190, 192, 206  
     *smithi* 206  
     *sondaica* 206  
     specializations of 168ff  
     *stahlknechti* 192, 206  
     *suluensis* 178, 190, 192, 206  
     *sumatrana* 191, 192, 206  
     *tropica* 168, 192, 206  
     *ulmeri* 206  
     *uniformis* 206  
     *ventralis* 196, 206  
     *vermiformis* 176, 178, 183, 185, 207  
         *grayi* 188, 207  
         *vermiformis* 187, 207  
     *virgulata* 180, 207  
     *zamboangensis* 207  
*calcarifer*, *Holocentrus* 72  
     *Lates* 53, 72  
         food 84  
*Calcaritermes* 472, 490, 492, 498, 508  
*caledoniae*, *Acritus* 605, 607, 612, 614  
*caledoniae*, *Sternaulax* 605, 607, 626  
*calosoma*, *Macrostomias* 279  
*canaliculatus*, *Drymaeus* 314  
*canalifrons*, *Prorhinotermes* 488  
*canellinus*, *Holochilus* 647, 661, 666  
*Canis familiaris*, weights of jaw muscles 42  
*capensis*, *Eptesicus* 595  
*Capritermes* 469, 477, 478, 480, 486, 488, 501, 503, 512  
*Captorhina* 387  
*Captorhinikos* 391  
*Captorhinoides* 391  
*Captorhinomorpha* 386, 399  
     distribution, geographic 390  
     geologic 390  
     Permian evolution 391  
*Captorhinus* 391  
*caquetae*, *Ortalis* 19  
*Caranx ignobilis* 53, 55, 72  
     food 73, 84  
 carapace, of *Caretta* 374ff  
     of *Lepidochelys* 374ff  
     of *Procolpochelys* 349  
 Carbondale Formation 523  
*carce*, *Ichthyocampus* 54, 55, 67  
     *Syngnathus* 67  
*Carcinops assimilis* 619  
     *minuta* 618  
     *palans* 618  
     *pumilio* 605, 608, 616, 619  
     *quattuordecimstriata* 616  
     *rubripes* 618, 619  
     *tibialis* 617  
     *trogodytes* 605, 608, 618



- Carcinus pumilio* 616  
*Caretta* 347, 365  
   carapace 374ff  
   *caretta* 360  
   plastron 357, 377  
   scales, head 376  
   vertebrae 360  
*Carettni* 345ff, 365  
   plastron 377  
*Carollia perspicillata* 238, 239  
*Casea* 392  
   *halselli* 396  
   *nicholsi* 396  
*Caseidae* 387, 392, 399  
*Caseoides* 395, 398  
*Catapleura arkansas* 377  
*caucae*, *Crypturellus soui* 15  
   *Ortalis* 19  
*Caulolepis longidens* 292  
   *subulidens* 293  
*caurinus*, *Reithrodon* 646  
*cavifrons*, *Constrictotermes* 474  
*Cavitermes* 469, 494, 512  
*Centrobranchus nigro-ocellatum* 286  
*Cephalaspis* 449  
   *novaesotiae* 454  
*Cephalofarer* 95  
*Cephalotermes* 469, 484, 493, 495, 510  
*ceramensis*, *Calamaria* 200  
*Ceratiidae* 299  
*Ceratostethus bicornis* 52, 54ff, 68  
*Ceratotermes* 511  
   *cereicola*, *Bulimulus* 317  
   *Ceylonitermellus* 469, 515  
   *Ceylonitermes* 481, 497, 514  
   *chaacarius*, *Holochilus* 655, 656, 663, 665  
   *chacunda*, *Anodontostoma* 52, 53, 55  
   *Clupanodon* 55  
*Chaerephon major* 595  
*Chaetodon argus* 75  
*Chamaepetes goudotii goudotii* 21  
*Chanda nalua* 72  
*chapalmalense*, *Proreithrodon* 646  
*chatareus*, *Coius* 75  
   *Toxotes* 52, 54, 55, 75  
   food 75, 85  
*Chauliodontidae* 277  
*Chauliodus danae* 277  
   *sloanei* 277  
*chavesi*, *Lampadena* 288  
*Chelon caeruleomaculatus* 53, 68  
   sp. 54, 68  
*Chelone grandaeva* 345  
   *longiceps* 345  
*Chelonia* 366  
   *girundica* 366, 378  
   *grandaeva* 345  
   *winneri* 364, 377  
   *mydas* 360, 378  
   *neurals* 353  
   *sismondai* 366, 378  
   vertebrae 360  
*Cheloniidae*, limbs 364, 378  
   phylogeny 363ff  
   scales, head 376  
*Cheloniinae*, classification 365  
*Chelonini* 366  
   plastron 377  
*Chiasmodon niger pluriradiatus* 297  
*Chiasmodontidae* 297  
*Chiasognathe* 499  
*Chilomys* sp. 240, 242  
*chilomysi*, *Amblyopinus* 239  
*Chilonycteris davyi fulvus* 697  
   *parnelli* 696  
   *personata* 696  
   *psilotis* 696  
   *rubiginosa mexicana* 696  
   *torrei continentis* 696  
*chionea*, *Helicina* 305  
*Chiropterargas* 579, 580  
*Chirotomias pliopterus* 281  
*chocoensis*, *Ortalis* 20  
*chondriiformis*, *Buliminus* 419  
   *Jamnia* 419  
   *Pupa* 419  
*Chondrula broti* 441  
   *florieni* 432, 441  
   *ghilanensis* 441  
   *ledereri* 441  
   *libanica* 423  
   *limbodontata* 441  
   *louisi* 441  
   *Massei* 419  
   *nichoni* 432  
   *septemdentata* 422  
   *tricuspidata* 441  
   *triticea* 441  
*Chondrulus heptodon* 429  
*Chondrus l'hotellieri* 440  
   *ovularis* 438  
   *septemdentatus* 422, 440  
*Chondrusa saulcyi impressa* 441  
   *septemdentatus* 441  
*Choza* Formation 389  
   fauna 390ff  
   *christiei*, *Plecotus auritus* 595  
   *chrysoaster*, *Holochilus* 661  
   *chrysosoma*, *Cyprinogobius* 52, 77  
   *Lophogobius* 77  
*Cichlherminia* 145  
*cinereiceps*, *Ortalis* 20  
*cinereus*, *Crypturellus* 15  
   *toltecus*, *Artibeus* 698  
*Clarias teysmanni* 52, 54, 65  
   ecological distribution 82  
   food 65, 84  
*claromphalos*, *Epiphragmophora* 327  
*Clausiliidae* 305  
*clausomphalos*, *Epiphragmophora* 327  
   *inferior*, *Epiphragmophora* 327  
*claviger*, *Amblyopinodes* 249  
*Clear Fork Group* 388ff, 397  
   fauna of 390



- Climatius* 458, 459  
*clivusus brachygnathus*, *Rhinolophus* 595  
*Clupanodon chacunda* 55  
 Clyde Formation 389  
*Coarctotermes* 473, 481, 486, 487, 489, 501, 514  
*cocco*, *Gonichthys* 286  
*Coilia coomansi* 54, 57  
*Coilus chatareus* 75  
*collaris*, *Calamaria* 201  
**colombiae**, *Amblyopinus* 231  
*colombiae*, *Cryptomorpha* 572  
 Colombian Zoological Expedition (1948-52) 214, 221  
   map of collecting stations 11  
 colonization of Tristan da Cunha 159  
*Coluber* 169  
*columbiana*, *Ortalis* 19  
*columbianus*, *Crypturellus boucardi* 16  
*comeri*, *Porphyrionis* 142  
*commersoni*, *Stolephorus* 52, 56  
   food 56, 84  
 competition, among termites 474  
**confusus**, *Argas* 579, 586, 594  
*connexum*, *Platysoma* 605, 607, 628, 629  
 Conover, Boardman 9  
*Constrictotermes* 469, 481, 496, 497, 514  
   *cavifrons* 474  
   *cyphergaster* 474  
*contiguum*, *Platysoma* 629  
*Convexitermes* 497, 515  
*coomansi*, *Coilia* 54, 57  
*Coptotermes* 468, 469, 472, 478, 483, 484, 488, 493, 509  
 Coptotermitinae 516  
*cor*, *Megaderma* 580, 595  
*cora*, *Neopetraeus* 335  
   *unicolor*, *Neopetraeus* 335  
*Corica*, predator of 80  
   *soborna* 52, 54, 57  
*Cornicaprithermes* 495, 512  
*Corniger* 96, 122  
*Cornitermes* 473, 495, 514  
*cornuta*, *Anoplogaster* 292  
*cornutus*, *Hoplostethus* 292  
*coruscus*, *Holocentrus* 92, 100, 112  
*Cotylorhynchus* 392, 397ff  
   *hancocki* 396  
   *romeri* 396  
*Cotylosauria* 386  
*couesi*, *Cryptopsaras* 299  
*crassa*, *Calamaria* 192, 201  
*crassus*, *Ampullarius* 303  
*Craz alberti* 17  
   *globulosa* 16  
   *rubra rubra* 17  
**crenatus**, *Aeletes* 605, 606, 610  
*Crenetermes* 511  
*Crepititermes* 494, 512  
*cretaceus*, *Neopetraeus* 335  
 Cricetidae 218  
*Crithagra* 147  
*Crithagroides* 147, 148  
 crossopterygians 388  
*Cryptommatius jansonii* 260  
*Cryptomorpha colombiae* 572  
*Cryptopsaras couesi* 299  
*Cryptotermes* 472, 478, 487, 490, 492, 508  
   *dudleyi* 492  
   *havilandi* 487  
*Crypturellus boucardi columbianus* 16  
   *cinereus berlepschi* 15  
   *souei cauae* 15  
   *undulatus yapura* 16  
*Ctenogobius* sp. 55, 77  
*Ctenomys* 215, 216, 220  
   *fulvus* 259  
   *magellanicus dicki* 237  
   *opimus nigriceps* 228, 252, 258  
   *peruanus* 254, 259  
*Cubitermes* 485, 511  
*culmineus*, *Bulimulus* 315  
*cumanensis*, *Pipile* 21  
*cuniculoides*, *Reithrodon* 646  
*Cuniculus taczanowskii* 215, 244  
*cuprarius*, *Lampanyctus* 288  
*curia*, *Calamaria* 191, 201  
*Curvitermes* 468, 495, 514  
*cyaneocupreus*, *Saprinus* 610  
*cyaneus*, *Hister* 608  
   *Saprinus* 605, 608  
*Cyclothone braueri* 272  
   *microdon* 272  
   *pallida* 272  
*Cyema atrum* 291  
 Cyemidae 291  
*Cylindrotermes* 469, 493, 510  
   *cyphergaster*, *Constrictotermes* 474  
*Cyprinogobius chryosoma* 52, 77  
*cystops*, *Rhinopoma hardwickei* 595  
  
**dalmati**, *Strepsylla* 541  
*danae*, *Chauliodus* 277  
*Dangila*, *spilurus* 63  
*darwini*, *Holochilus* 647, 661, 663, 664  
*darwiniensis*, *Mastotermes* 468  
*daubani*, *Aeletes* 610  
*davisae*, *Strepsylla* 546  
*davyi fulvus*, *Chilonycteris* 697  
   *Pteronotus* 697  
 Dendrophilinae 601, 605, 616  
*Dendrophilus minutus* 618  
   *quatuordecimstriata* 616  
*Dentispicotermes* 494, 512  
 dentition, of *Calamaria* 173ff  
   of sigmodont rodents 644ff  
   of symmetrodont 690  
*dentritis*, *Bulimulus* 319  
*derelictus ascendens*, *Bulimulus* 317  
 Derichthyidae 290  
*Derichthys serpentina* 290  
 Dermochelyidae 365  
*Dermogenys*, ecological distribution 81, 86

- pusillus* 52, 54ff, 66  
 ecological distribution 82  
*Desmatodon* 391  
 Desmochelyidae 365  
*Desmodus murinus* 700  
*rotundus murinus* 700  
 Diadecta 387  
*Diadectes* 387, 391  
 Diadectidae 387, 399  
 Diadectomorpha 386  
 distribution, geographic 390  
 geologic 390  
 Permian evolution 391  
*diaphana*, *Sternoptyx* 277  
*Diaphus dofleini* 286  
*fulgens* 287  
*gemellari* 287  
*metopoclampus* 287  
*Diasparactus* 391  
*Diatermes* 507  
*diazii*, *Romerolagus* 548  
*Didelphis albiventris* 215, 243, 244  
*aurita* 247  
*marsupialis* 215  
*paraguayensis* 243  
*difficilis amplus*, *Peromyscus* 547  
*diluta*, *Epiphragmophora* 327  
*Dimacrodon* 393, 395, 398, 400  
*Dimetrodon* 387, 393, 397  
*gigashomogenes* 392, 397  
*dinema*, *Photonectes* 282  
*Dinocyon* 44  
*Diogenichthys atlanticus* 286  
 Dipnoi 388  
 Diretmidae 292  
*Diretmus argenteus* 292  
*disjuncta*, *Margrethia* 270  
 distribution, ecological, of fishes 81ff  
 geographic, fossil reptiles 389ff  
 vertical, of fishes 269ff  
*Diversitermes* 496, 514  
*döderleini*, *Calamaria* 201  
*doerianense*, *Calamaria* 199, 201  
*dofleini*, *Diaphus* 286  
*Dolichorhinotermes* 469, 493, 509  
*Dolichosoma* 531, 532  
 Dolichosomatidae 531  
*doriae*, *Brachygobius* 52, 77  
 food 77, 85  
*Gobius* 77  
*dorsalis*, *Vampyrops* 407  
*Doryichthys brachyurus* 55, 67  
*Drepanotermes* 469, 473, 503, 510  
*Drymaeus canaliculatus* 314  
*eucosmetus* 331  
*interruptus* 333  
*pamplonensis* 314  
*pocilus* 332, 333  
*ponsonbyi* 332  
*schmidti* 314  
*serotinus* 313, 332  
*zilchi* 333  
*dudleyi*, *Cryptotermes* 492  
 Dunkard Formation 389  
*dunnei*, *Nesospiza wilkinsi* 152  
*Duplidentitermes* 511  
*dussumieri*, *Mugil* 53, 68  
*ebriosus*, *Neotomys* 646  
*vulturnus*, *Neotomys* 646  
*Echiosstoma tanneri* 281  
 ectoparasitism, in beetles 211  
 Edaphosauria 387  
 distribution, geographic 390  
 geologic 390  
*Edaphosauria* 387  
 Edaphosauridae 387, 399  
 evolution in Permian 392  
*Edaphosaurus* 392  
*Edrabiis* 216, 218, 220, 254  
*alticolus* 259  
*argentinus* 258  
*pearsoni* 219, 258  
*peruanus* 259  
*philippianus* 212, 215, 254, 255  
*weiseri* 255  
*Edriolychnus schmidti* 299  
*egregia*, *Calamaria* 201  
*Egretta alba* 153  
*thula* 152  
*Elaphe* 169  
*elatus*, *Bulimulus* 324  
*electa*, *Calamaria* 201  
*Electrotermes* 507  
 Electrotermitinae 507  
*elegans*, *Calamaria* 190, 192, 201  
*Ptyssophorus* 646  
 Eleotridae, ecological distribution 81-82  
*Eleotris fusca* 52, 76  
 predator of 78  
*gymnopomus* 76  
*melanosoma* 52, 54, 76  
 food 76, 85  
*porocephala* 76  
*urophthalmus* 77  
*Eleutheronema tetradactylum* 55  
 food 85  
*elongatum*, *Gonostoma* 270  
*elongatus*, *Barbus* 62  
*emarginatus*, *Amblyopinus* 239  
*Emberiza* 150  
*tahapisi*, horny palate 151  
 Emberizinae 149  
*Enchisthenes harti* 700  
 Endodontidae 308  
*endospira*, *Bulimulus* 336  
*Engraulis tri* 56  
*enode*, *Platysoma* 629  
*Enoploclytia walkeri schmidti* 445  
*ensifer*, *Holocentrus* 92  
*Eotermes* 507  
*Epierus krujanensis* 617  
*rubripes* 618  
*Epinephalus nebulosus* 55, 72

- food 85  
*Epiphragmophora atahualpa* 327  
*claromphalos* 327  
*clausomphalos* 327  
*diluta* 327  
 (*Epiphragmophora*) *atahualpa* 327  
*claromphalos* 327  
*diluta* 327  
*olssoni* 336  
*patasensis* 327  
*huanucensis* 328  
*olssoni* 336  
*patasensis* 327  
 (*Pilsbryna*) *clausomphalos* 327  
*inferior* 327  
*puntana* 328  
*Eptesicus capensis* 595  
*pusillus* 595  
*lenuipinnis* 595  
*equula*, *Leiognathus* 74  
*equulus*, *Leiognathus* 52ff, 74  
 food 74, 85  
*Scomber* 74  
*eremita*, *Nesocichla* 145  
*Eremotermes* 472, 480, 483, 510  
*Eretmochelys* 366  
*imbricata* 376  
 vertebrae 360  
*Erolia acuminata* 154  
*erythrocephala*, *Ornithoctona* 21  
*erythrogaster*, *Hirundo rustica* 155  
 Ethiopian region, termite fauna of 484,  
 508ff  
*Euchilotermes* 511  
*Euclastes melii* 363, 365, 377  
*eucosmetus*, *Drymaeus* 331  
*Eucryptotermes* 469, 492, 508  
*Euhamitermes* 495, 510  
*Eurylister* 628  
 Eurypharyngidae 289  
*Eurypharynx pelecانoides* 289  
*Eurytermes* 468, 493, 510  
*Euscaiotermes* 513  
*Eustomias bibulbosus* 282  
*bigelowi* 282  
*obscurus* 282  
*schmidti* 282  
*Eutermellus* 469, 487, 502, 515  
*Euxina moesta* 433  
*Evenchelys macrurus* 55, 58  
 food 85  
*everetti*, *Calamaria* 192, 201  
*Nematabramis* 53ff, 60  
 ecological distribution 82  
 food 60, 84, 88  
*Evermannella atrata atlantica* 284  
*balbo* 284  
*indica melanoderma* 285  
 Evermannellidae 284  
 evolution of cricetine dentition 643  
 of parasitic staphylinids 216  
 of rodents 217  
 of sigmodont dentition 643  
*extensus*, *Bulimulus* 323  
*familiaris*, *Canis* 42  
*Farancia* 169  
*Faremusca* 95  
*fasciola*, *Idiacanthus* 283  
*Fastigitermes* 512  
*fautini*, *Strepsylla* 546  
*fauxeli*, *Bacanius* 605, 622, 624, 625  
*ferox*, *Stomias boa* 278  
*Firmitermes* 511  
 fishes, Bermuda deep sea 265ff  
 complementary fresh-water 81  
 of North Borneo 47ff  
 ecological distribution 81ff  
 food of 84, 87ff  
 vertical distribution 269ff  
*Flammeo*, *Holocentrus* 92, 99  
*flavicans*, *Oryzomys* 657  
*flaviventris*, *Serinus* 139, 155  
 Flower Pot Formation 386  
 fauna of 393ff, 398  
*fluviatilis*, *Tetraodon* 54, 55, 80  
*Tetrodon* 80  
 food, of *Calamaria* 174  
 of fishes 87ff  
*Foramitermes* 506, 515, 516  
*forestieri*, *Paromalus* 619  
*Platylomalus* 605, 608, 619  
*Forficulitermes* 511  
 Formation, geologic, Abo 389  
 Admiral 389  
 Arroyo 389ff  
 Belle Plains 389  
 Choza 389ff  
 Clyde 389  
 Dunkard 389  
 Flower Pot 389  
 Hennessey 392  
 Moran 389  
 Putnam 389  
 San Angelo 389  
 Vale 389ff  
*formosana*, *Calamaria pavimentata* 205  
*frantzii*, *Ortalis* 20  
*Fringillaria tahapisi* 150  
 Fringillinae 149  
*frontosum*, *Platysoma* 631  
 Fruticicolidae 327, 336  
*fuegensis*, *Amblyopinus* 216, 237  
*fulgens*, *Diaphus* 287  
*fumosus*, *Vampyrops* 405  
*fur*, *Termes* 474  
*Furculitermes* 511  
*fusca*, *Eleotris* 52, 76  
 predator of 78  
*Poecilila* 76  
*fuscipennis*, *Nothocercus* 13  
 Gadidae 291  
*gahani*, *Amblyopinodes* 248

- Galea musteloides* 254  
*Galenomys garleppi* 254  
*Gallinula* 143  
   *chloropus* 143  
*garrula*, *Ortalis* 20  
*Gastrocopta (Gastrocopta) wolfii* 305  
*Gastromyzon borneensis* 64  
*gastropicta*, *Calamaria margaritophora* 204  
*gemellari*, *Diaphus* 287  
Gempylidae 298  
*Genuotermes* 494, 512  
*Geoceras*, *Bulimulus* 320  
*Geocichla* 144  
Geomyidae 218  
*Geopyrgus*, *Bulimulus* 336  
*Geospiza* 148  
*Gerres poeii* 53, 74  
   food 74, 85  
*gervasi*, *Calamaria* 169, 176, 178, 180, 201  
*Gibbotermes* 488  
*gigashomogenes*, *Dimetrodon* 392, 397  
*gimletti*, *Calamaria* 196, 199, 201  
*girundica*, *Chelonia* 366, 378  
*giurus*, *Glossogobius* 52, 55, 78  
   food 78, 85  
   *Gobius* 78  
*glacialis*, *Bathylagus* 284  
*Glarichelys knorri* 364, 377  
*Globitermes* 469, 510  
*globulosa*, *Craz* 16  
*Glossogobius giurus* 52, 55, 78  
   food 78, 85  
   predator of 68  
*Glossophaga soricina leachi* 697  
*Glossotermes* 479, 492, 509  
*Glyptotermes* 468, 469, 473, 476-478, 484, 492, 498, 507, 508  
*Gnathamitermes* 469, 472, 473, 491, 510  
Gobiidae, ecological distribution 81ff  
*Gobiopterus brachypterus* 55, 78  
*Gobius boddaerti* 80  
   *doriae* 77  
   *giurus* 78  
   *schlosseri* 79  
   *tentacularis* 78  
*Gomphodus* 459  
*Gonichthys coco* 286  
*Gonionenia*, *Nenia* 308  
*Gonistomus subhybridus* 314  
*Gonostoma bathyphilum* 272  
   *elongatum* 270  
Gonostomatidae 269  
*gordoni*, *Nesocichla* 146  
*Gorgonopsia* 387, 397  
*göringi*, *Calamaria* 202  
*goudotii*, *Chamaepetes* 21  
*Gough Island* 142ff  
*goughensis*, *Nesospiza* 148  
   *Rowettia* 142  
   horny palate 151  
*grabowskyi*, *Calamaria* 178, 189, 202  
*gracilis*, *Calamaria* 202  
*gracillima*, *Calamaria* 196, 199, 202  
*Grallatotermes* 477, 478, 481, 486, 487, 501, 503, 514  
*grandaeva*, *Chelone* 345  
   *Chelone* 345  
   *Procolpochelys* 345ff  
*grandis robustior*, *Urotraiinus* 564  
   *Syntermes* 564  
   *Urotraiinus* 564  
*Granopupa rhodia* 429  
*gratus*, *Peromyscus truei* 548  
*grayi*, *Calamaria* 183, 185, 188, 207  
   *vermiformis* 188, 207  
Green Sand 345  
*grisoldi*, *Calamaria* 178, 183, 202  
   *lumbricoidea* 183, 202  
*guatemalensis*, *Peromyscus* 544, 548  
*guernei*, *Photostomias* 283  
*guianae*, *Holochilus* 647, 659, 668  
*guttata*, *Ortalis* 19  
*guttatus*, *Tinamus* 12  
*gwinneri*, *Chelonia* 364, 377  
*gymnocephalus*, *Ambassis* 52, 54, 71  
   *Lutjanus* 71  
*gymnopomus*, *Butis* 52, 55, 76  
   food 76, 85  
   *Eleotris* 76  
Habrocerinae 211  
*Habroconus (Pseudoguppya) semenlini* 308  
*haedinus*, *Taphozous perforatus* 580  
*Halacritus* 611  
*halselli*, *Casea* 396  
*hamatus*, *Bacanius* 620  
*hamiltoni*, *Bulimulus* 325  
   *Thrissoles* 56  
   *Thrissoles* 53, 56, 58  
   food 56, 84  
*Hampala macrolepidota* 52, 53, 62  
   ecological distribution 82  
   food 62, 84  
*hancocki*, *Cotylorhynchus* 396  
*Haptodus* 392  
*hardwickei cystops*, *Rhinopoma* 595  
*Harpag* 95  
   *rosea* 95  
*harti*, *Artibeus* 700  
   *Enchisthenes* 700  
*hasta*, *Lutjanus* 73  
   *Neoniphon* 94  
   *Pomadasy* 53, 55, 73  
   food 73, 85  
*hastatus*, *Holocentrus* 92, 111  
*havilandi*, *Cryptotermes* 487  
*Havilanditermes* 481, 514  
*Helicinidae* 304  
*Helicina (Helicina) chionea* 305  
   *peruviana* 304  
*helleri*, *Vampyrops* 411

- Hemicyon* 44  
*hemigymnus*, *Argyropelecus* 274  
*Hemirhamphus amblyurus* 67  
*hemprichi*, *Otonycteris* 595  
 Hennessey Formation 392  
*henseli*, *Amblyopinus* 212, 247  
 Hershkovitz, Philip 9, 214  
**hershkovitzi**, *Amblyopinus* 238  
*hershkovitzi*, *Tinamus osgoodi* 10  
*Hesperomys* 644  
   (*Holochilus*) *brasiliensis* 666  
     *physodes* 666  
     *vulpinus* 663  
   *physodes* 666  
   *russatus* 666  
   *squamipes* 666  
   *vulpinus* 657, 664  
*Heteromys* 218  
   *anomalus* 238  
*Heterotermes* 468, 472, 473, 477-479,  
   483, 484, 490, 493, **499**, 509  
 Heterotermitinae 516  
*hirtipes*, *Petalasoma* 626  
*Hirtitermes* 481, 514  
*Hirundo rustica erythrogaster* 155  
*hispidus*, *Sigmodon* 647  
*Hister*, *cyaneus* 608  
   *nanus* 617  
   *troglydites* 618  
 Histeridae 601ff  
 Histerinae 605, **626**  
*Hodotermes* 473, 484, 502, 509  
 Hodotermitidae 472, 479, 482, 484, 499,  
   505-507, 509  
 Hodotermitinae 516  
*Hodotermopsis* 470, 482, 509  
*hollandi*, *Calamaria* 202  
 Holocentridae 91ff, 121ff  
   auditory bulla 123  
   opisthotic bone 125  
   swim bladder 122  
 Holocentrinae 122  
*Holocentrum longipinne* 100  
   *perlatum* 104, 107  
   *osculum* 104  
   *productum* 100  
   *riparum* 109  
   *rostratum* 99  
*Holocentrus* **91ff**, 121, 122  
   (*Adioryx*) 92, **109**  
     **bullisi** 92  
       *coruscus* 92, 100  
       *hastatus* 92  
       *lacteoguttatus* 92  
       *microstomus* 92  
       *punctatissimus* 92  
       *suborbitalis* 92, 100  
       *tiere* 92  
       *vexillarius* 92, 100  
       *xantherythrus* 92  
   *ascensionis* 93, 97, **100**, 106, 122ff, 134  
   Atlantic species 91ff  
   *brachypterus* 109  
   **bullisi** 91, 97, **113**  
   *calcarifer* 72  
   *coruscus* 97, 100, **112**  
   (*Flammeo*) 92  
     *laevis* 92, 100  
     *marianus* 92  
     *opercularis* 92, 100  
     *sammara* 92, 100  
     *scythrops* 92, 100  
   *hastatus* 111  
   *leo* 92  
   *marianus* 92, 96, **99**  
   *maxilla* 92  
   *meeki* 95, 104, 109  
   *osculus* 91  
   *punctatissimus* 95  
   *puncticulatus* 112  
   *rufus* 91, 97, 102, **104**, 122  
   *sammara* 94  
   *sanctipauli* 91, 100  
   (*Sargocentron*) 92  
     *ensifer* 92  
     *leo* 92  
     *prasin* 92  
     *tieroides* 92  
     *spinosissimus* 92  
   *sicciferum* 95, 109  
   *spinifer* 92  
   *suborbitalis* 92, 126, 132  
   *tahiticum* 95  
   *tortugae* 112  
   *vexillarius* 96, 97, **109**  
*Holocheilus* 648  
*Holochilomy brasiliensis* 662  
*Holochilus* 639ff, 647, 648, 653  
   *amazonicus* 659, 667  
   *anguya* 647  
   *balnearum* 656, 661, 665  
   *berbicensis* 661  
   *brasiliensis* 645, 647, 648, 653, 654,  
     657, **658**, 660, 661, 662, 666  
   *amazonicus* 667, 669  
   *balnearum* 665  
   *berbicensis* 655, **669**  
   *brasiliensis* 662  
   *guianae* 668  
   *incarnum* 668  
   *leucogaster* 648, 665  
   *nanus* **666**, 669  
   *venezuelae* 670  
   *vulpinus* 661, **662**  
   *canellinus* 647, 661, 666  
   *chacarius* 655, 656, 663, 664, 665  
   *chrysogaster* 661, 662  
   *darwini* 647, 661, 663, 664  
   *guianae* 647, 659, 668  
   *incarnum* 659, 668  
   *leucogaster* 647, 661, 666  
   **magnus** 640, 644, 648, 653, 654, **657**  
   *multannus* 647, 661, 663, 664  
   *nanus* 647, 659, 666, 668



- physodes* 647, 666  
*russatus* 647, 661  
*sciureus* 647, 659, 661, 662, 666, 667, 669  
     *berbicensis* 669  
*squamipes* 647  
*venezuelae* 661, 669, 670  
*vulpinus* 647, 657, 661, 663  
*Hololepta urvillei* 630  
*Holotrachys* 95, 122  
     *lima* 95  
*Homalotermes* 469, 512  
*Hoplognathotermes* 468, 485, 511  
*Hoplostethus cornutus* 292  
*Hoplotermes* 469, 493, 510  
*hosei*, *Calamaria* 202  
*Hospitalitermes* 477, 478, 481, 503, 514  
*huanucensis*, *Epiphragmophora* 328  
*huilae*, *Amblyopinus* 242  
*Hyalorhynchus natalensis* 284  
*hygomi*, *Hygophum* 286  
*Hygophum benoisti* 285  
     *hygomi* 286  
     *macrochir* 286  
     *reinhardti* 285  
*hylocetes*, *Peromyscus* 548  
*hyperythrus*, *Odonophorus* 22  
*hypopiis*, *Rhynchortyx cinctus* 22  
*Hypotermes* 513  
*hypodonty* 644  
*Hypsolenus* 626  
*Hystricomorpha* 217  
*Hystrichopsyllidae* 541  
  
*ibis*, *Bubulcus* 153  
*Ichthyocampus carce* 54, 55, 67  
*Ichthyococcus ovatus* 273  
*Idiacanthidae* 283  
*Idiacanthus fasciola* 283  
*Idister* 626  
     *mendax* 626  
     *morphon* 626  
*ignobilis*, *Caranx* 53, 55, 72  
     food 73, 84  
     *Scomber* 72  
*Ilisha kampeni* 52ff, 57  
     food 57, 84  
*imbricata*, *Eretmochelys* 379  
*Incania*, *Nenia* 307  
*incarum*, *Holochilus* 659, 668  
     *brasiliensis* 668  
     *Strophocheilus* 331  
*incipiens*, *Proreithrodon* 646  
*indica melanoderma*, *Evermannella* 285  
*Indomalayan region*, termite fauna of  
     479, 508ff  
*indragirica*, *Calamaria* 202  
*inferior*, *Epiphragmophora clausomphalos* 327  
*infundibulum*, *Bulimulus* 320  
*infuscus*, *Vampyrops* 405  
*ingolfianus*, *Nessorhamphus* 291  
  
*inquilinus*, *Termes* 474  
*insularum*, *Ampullarius* 304  
*interrupta*, *Ambassis* 52ff, 71  
     food 71, 84  
*interruptus*, *Drymaeus* 333  
*iostoma*, *Porphyrobae* 331  
*iridescens*, *Calamaria gervaisi* 182  
*Isospondyli*, ecological distribution 81ff  
*Ixodoidea* 579  
  
*jacobus*, *Myripristis* 93  
*jacuáçu*, *Penelope* 18  
*jaculator*, *Toxotes* 74  
*jaculatrix*, *Sciaena* 74  
     *Toxotes* 54, 74  
     food 74, 85  
*jamaicensis*, *Artibeus* 698  
*Jaminia chondriformis* 419  
     *ghilanensis* 436  
     *heptodon* 423, 429ff  
     *lamellifera* 434ff  
     *libanica* 429, 432ff, 435  
     *ovularis* 423, 438ff  
     *saulcyi* 416  
     *septemdentata* 421, 422ff, 433  
     *sexdentata* 436ff  
     *sulcidens* 438ff  
     *tridens* 440  
*jansoni*, *Myotyphlus* 219, 259, 260  
*javanica*, *Calamaria* 202  
     *lineata*, *Calamaria* 196, 202  
*jello*, *Sphyaena* 54, 68  
     food 68, 84  
*jelskii*, *Amblyopinus* 212, 224  
     *Thaumastus* 309  
*jeudi*, *Calamaria* 202  
*jocosensis*, *Bulimulus* 322  
*joloensis*, *Calamaria* 203  
*jouteli*, *Kalotermes* 576  
*Jugositermes* 511  
*julius*, *Nothocercus* 12  
  
*kalinowskii*, *Amblyopinus* 243  
     *Nenia angrandi* 306  
*Kalotermes* 467, 468, 472, 473, 478, 483, 488, 490, 491, 492, 502, 507, 508  
     *jouteli* 576  
*Kalotermitidae* 476, 479, 484, 491, 505-508, 516  
     introductions 474  
     termitophiles 563, 575  
*Kalotermitinae* 507  
*kampeni*, *Ilisha* 52ff, 57  
     food 57, 84  
     *Pellona* 57  
*Karlschmidtia* 327  
     *lentiformis* 328  
*klossi*, *Calamaria* 203  
*knorri*, *Glarichelys* 364, 377  
*koefoedi*, *Searsia* 269  
*kofordi*, *Amplyopinus* 231



- kretamensis*, *Tetraodon* 52, 55, 81  
 food 81  
*krujanensis*, *Epiurus* 617  
*kuhli*, *Pipistrellus* 595  
*Kutaflammeo* 95
- labecula*, *Peromyscus maniculatus* 548  
*Labidosaurikos* 391  
*Labidosaurus* 391  
*Labiotermes* 495, 514  
*Labritermes* 510  
*Lacessititermes* 481, 514  
*lacteoguttatus*, *Holocentrus* 92  
*laetus*, *Saprinus* 609  
*laeve*, *Platysoma* 628  
*laevis*, *Aeletes* 610  
*Holocentrus* 92, 100  
*lamellifera*, *Jaminia* 434ff  
*Lampadena bathyphila* 288  
*chavesi* 288  
*minima* 288  
*Lampanyctus alatus* 289  
*ater* 288  
*cuprarius* 288  
*photothorax* 289  
*pusillus* 289  
*supralateralis* 289  
*taaningi* 289
- lankesteri*, *Neostethus* 53, 69  
*lateralis*, *Calamaria* 203  
*Lates calcifer* 53, 72  
 food 84  
*Latisubulitermes* 515  
*lautensis*, *Calamaria* 178, 191, 203  
*leachi*, *Glossophaga soricina* 697  
*Monophyllus* 697  
*leathensis*, *Pteraspis* 452  
*Leiognathus equula* 74  
*equulus* 52ff, 74  
 food 74, 85
- lentiformis**, *Karlschmidtia* 328  
*Lepidochelys* 349, 354, 365  
*carapace* 374ff  
*neurals* 349  
*olivacea* 376  
*plastron* 377  
*scales, head* 376  
*vertebrae* 360  
*Lepidotermes* 511  
*Lepospondyli* 531  
*Leptocephalus pseudolatissimus* 290  
*roulei* 290  
*splendens* 290  
*Leptonycteris nivalis nivalis* 698  
*Leuciscus sumatranus* 60  
*leucocephala*, *Calamaria* 169, 176, 178, 193, 203  
*leucogaster*, *Calamaria* 169, 176, 179, 203  
*dentition* 172ff  
*Holochilus* 647, 661, 666  
*Holochilus brasiliensis* 648, 665  
*Mus (Holochilus)* 648, 660, 666
- Leucopitermes* 477, 478, 489, 502, 514  
*leucopogon*, *Astronesthes* 278  
*leucops*, *Subulitermes* 502  
*leucopus*, *Rhampoberyx* 94  
*levipes*, *Peromyscus boylii* 545  
*libanica*, *Jaminia* 432ff  
*lilium parvidens*, *Sturnira* 700  
*lilliputianus*, *Acritus* 612  
*lima*, *Holotrachys* 95  
*limbs, of Cheloniidae* 364, 378  
*Limnopomus Ampullarius* 303  
*linearis*, *Phlegethontia* 531  
*lineata*, *Calamaria javanica* 196, 202  
*lineatus*, *Vampyrops* 408, 409  
*linnaei*, *Calamaria* 171, 195, 203  
*Linophryne arborifera* 300  
*bicornis* 300  
*Lissoacme*, *Bulimulus* 317ff  
*lobatus*, *Rhinolophus* 595  
 London Clay 345  
*longibarbatulus*, *Macrostomias* 279  
*longicauda*, *Bartramia* 154  
*longicaudatus*, *Oryzomys* 648  
*longiceps*, *Chelone* 345  
*longidens*, *Caulolepis* 292  
*Longipeditermes* 469, 481, 514  
*longipes*, *Aeletes* 614  
*longipinne*, *Holocentrum* 100  
**longitudinalis**, *Bulimulus* 316  
*longus*, *Amblyopinus* 234  
*Lophodolus acanthognathus* 299  
*Lophogobius chryosoma* 77  
*lowi*, *Calamaria* 178, 196, 199, 203  
*Loxops* 148  
*lumbricoidea*, *Calamaria* 178, 183, 189, 203  
*griswoldi*, *Calamaria* 183, 202  
*lunholtzi*, *Calamaria* 203  
*lutescens*, *Mus* 648  
*Lutianus argentimaculatus* 54, 55, 73  
 food 84, 85  
*Lutjanus gymnocephalus* 71  
*hasta* 73  
 Lysorophidae 531
- Macraster elegans* 447  
*macrochir*, *Hygophum* 286  
*macrolepidota*, *Hampala* 52, 53, 62  
 ecological distribution 82  
 food 62, 84  
*macrolychnus*, *Neonesthes* 278  
*macropus*, *Ophthalmopelton* 284  
*Macrosternus montrouzieri* 627  
*Macrostomias calosoma* 279  
*longibarbatulus* 279  
*Macrosbulitermes* 503, 515  
*Macrotermes* 473, 484, 486, 507, 513  
*Macrotermitinae* 486, 505, 506, 513, 516  
*macrurus*, *Evenchelys* 55, 58  
 food 85  
*Muraena* 58  
*macularia*, *Actitis* 154

- maculatus*, *Anthias* 73  
*Pomadasy* 53, 73  
 food 73, 85  
**magnus**, *Holochilus* 640, 644, 648, 653, 654, 657  
*major*, *Chaerephon* 595  
*Opheodrys* 174  
*Tinamus* 9  
 Malacosteidae 283  
*Malagasitermes* 469, 489, 501, 514  
 Malagasy region, termite fauna of 487ff, 502, 508ff  
*Manchurodon* 692  
*maniculatus labecula*, *Peromyscus* 548  
*margaritophora*, *Calamaria* 191, 192, 203  
*gastroptica* 204  
*marginalis*, *Rhinotermes* 493  
*Margrethia disjuncta* 270  
*obtusirostra* 270  
*marianus*, *Holocentrus* 92, 96  
*marmoratus*, *Odontophorus gujanensis* 21  
*marmosae*, *Amblyopinus* 247  
*martinica*, *Porphyra* 153  
*Mastotermes* 476, 490, 498, 507, 508  
*darwiniensis* 468  
 Mastotermitidae 479, 490, 491, 505-508, 516  
*maxilla*, *Holocentrus* 92  
*maximus vestitus*, *Strophocheilus* 309  
*mazonensis*, *Phlegethontia* 523  
*mearnsi*, *Calamaria* 204  
*mecheli*, *Calamaria* 204  
*meekei*, *Holocentrus* 95, 104, 109  
*Megaderma cor* 580, 595  
*Megagnathotermes* 468, 485, 511  
*Megalobulimus*, *Strophocheilus* 309  
*megalophylla*, *Mormoops* 697  
*megalotis mexicana*, *Micronycteris* 697  
**Megamblyopinus** 212, 215, 216, 218, 222, 251  
*germaini* 254  
*mniszewski* 216, 219, 251  
*mehelyi*, *Rhinolophus* 595  
*Melamphaes anthrax* 297  
*microps* 296  
*mizolepis* 297  
*opisthopterus* 296  
*robustus* 297  
 Melamphaidae 296  
 Melanocetidae 299  
*Melanocetus murrayi* 299  
*Melanodera* 144, 147-149  
*melanodera* 149  
 horny palate 151  
*melanoderma*, *Evermannella indica* 285  
*Melanonus unipennis* 291  
*melanosoma*, *Eleotris* 52, 54, 76  
 food 76, 85  
*Ophicephalus* 54, 71  
 ecological distribution 82  
 food 71, 84  
 Melanostomiidae 281  
*Melanosuchus niger* 339  
*melanota*, *Calamaria* 204  
*melasoma*, *Ophicephalus* 71  
*melii*, *Euclastes* 363, 365, 377  
*Melursus ursinus* 25  
*mendax*, *Idister* 626  
*Metachirus opossum* 247  
*metallicus*, *Bathophilus* 281  
*Merostichis* 656  
*metopoclampus*, *Diaphus* 287  
*mexicana*, *Chilonycteris rubiginosa* 696  
*Micronycteris megalotis* 697  
 Mexico, bats from 695ff  
*Microborus*, *Strophocheilus* 330  
*microcephalus*, *Neonesthes* 278  
*Microcerotermes* 467, 469, 472, 473, 478, 480, 483, 485, 488, 493, 507, 510  
*microdon*, *Cyclothone* 272  
*Microrhodotermes* 471, 473, 477, 482, 484, 502, 509  
*Micronycteris megalotis mexicana* 697  
*microphthalmalma*, *Syntermorpha* 572  
*microphyllum*, *Rhinopoma* 595  
*microps*, *Melamphaes* 296  
 Microsauria 531  
*microstomus*, *Holocentrus* 92  
*Microtermes* 473, 486, 489, 501, 513  
 Milleretidae 392  
*milloti*, *Eutermes* 501  
*Mimeutermes* 487, 489, 502, 514  
*mina*, *Strepsylla* 546  
*mindorensis*, *Calamaria* 204  
*minima*, *Lampadena* 288  
*Minioperus natalensis arenarius* 595  
*minuta*, *Carcinops* 618  
*minutus*, *Dendrophilus* 618  
*Miocene* Marl 345  
*Miotermes* 507  
*mira*, *Ortalis* 20  
*Mirocapritermes* 512  
*mizolepis*, *Melamphaes* 297  
*mjobergi*, *Calamaria* 204  
*mniszewski*, **Megamblyopinus** 216, 219, 251  
*modestus*, *Bulimulus* 318  
*Zonibyx* 154  
*molesti*, *Urotirainus* 564  
*molestus*, *Syntermes* 562, 564, 571  
 Molgophidae 531  
*Molossus rufus nigricans* 701  
*rufus rufus* 701  
*sinaloae* 701  
*Monopterus alba* 53, 59  
*montagnii*, *Penelope* 18  
**monticolus**, *Amblyopinus* 228  
**montivagans**, *Amblyopinus* 240  
*montrouzieri*, *Apobletes* 605, 607, 627  
*Macrosternus* 627  
*Platysoma* 605, 607, 629  
 Moran Formation 389  
*Mormoops megalophylla megalophylla* 697

- morphon*, *Idister* 626  
*Mucrotermes* 511  
*muelleri*, *Calamaria* 192, 204  
*Mugil caeruleomaculatus* 68  
     *dussumieri* 53, 68  
*Mullerister* 620  
*multannus*, *Holochilus* 647, 661, 663  
     664  
*Muraena alba* 59  
     *macrurus* 58  
*murinus*, *Desmodus* 700  
     *Desmodus rotundus* 700  
*Muroidea* 218  
*murrayi*, *Melanocetus* 299  
*Mus agilis* 648  
     *angouya* 660, 662  
     *brasiliensis* 660, 662-664  
     (*Holochilus*) *angouya* 648, 660, 666  
     (*Holochilus*) *leucogaster* 648, 660  
     *lutescens* 648  
     *physodes* 660, 665  
     *simpsoni* 648  
     *vulpinus* 660, 662  
*mutabilis*, *Bulimulus* 334  
*Myctophidae* 285  
*mydas*, *Chelonia* 360  
*Myomorpha* 217  
*Myotyphlus* 211, 215, 217, 218, 259  
     *jansoni* 219, 259, 260  
*Myripristinae* 122  
     auditory bulla 124  
     opisthotic bone 125  
     swim bladder 123  
*Myripristis* 96  
     *argyromus* 136  
     *jacobus* 93, 121  
     *occidentalis* 93, 121  
*Mystus nemurus* 53ff, 65  
     ecological distribution 82, 86  
     food 66, 84  
  
*nalua*, *Ambassis* 53, 72  
     *Chanda* 72  
*nanus*, *Hister* 617  
     *Holochilus* 647, 659, 666, 668  
     *brasiliensis* 666  
*Nasutitermes* 468, 469, 472, 473, 477,  
     478, 480, 481, 483, 486, 489, 495,  
     496, 514  
*Nasutitermitinae* 486, 487, 495, 505,  
     514, 516, 562  
*nasutus*, *Nesiarchus* 298  
*natalensis*, *arenarius*, *Miniopterus* 595  
     *Hyalorhynchus* 284  
     *Rhynchohyalus* 284  
*Natrix* 169  
     *nuchalis* 174  
*Nearctic region*, termite fauna of 489,  
     508ff  
*nebulosus*, *Epinephelus* 55, 72  
     food 85  
  
*Serranus* 72  
*Nectomys* 654, 670  
     *squamipes* 249, 653  
*Nectridia* 531  
*Nematabramis everetti* 53ff, 60  
     ecological distribution 82  
     food 60, 84, 88  
     predator of 62  
*Nemichthyidae* 291  
*Nemichthys scolopaceus* 291  
*nemorensis*, *Bulimulus* 316  
*nemurus*, *Bagrus* 65  
     *Mystus* 53ff, 65  
     ecological distribution 82, 86  
     food 66, 84  
*Nenia angrandi kalinowskii* 306  
     *urubambensis* 306  
     (*Gonionenia*) *weyrauchi* 308  
     (*Incania*) *warszewiczi* 307  
     (*Neniactra*) *adusta* 305  
     *tumens* 305  
*Neniactra*, *Nenia* 305  
*Neobacanius* 620  
*Neocapritermes* 469, 495, 512  
*Neomyrpristis* 94  
     *amaenus* 94  
*Neonesthes macrolychnus* 278  
     *microcephalus* 278  
*Neoniphon* 94  
     *armatus* 94  
     *hasta* 94  
*Neopetraeus cora unicolor* 335  
     *cretaceus* 335  
     *platycheilus* 311  
     *rhodolarynx* 311  
*Neopsyllinae* 541  
*Neostethus bicornis* 68  
     *borneensis* 52, 54ff, 69  
     *lankesteri* 53, 69  
*Neotermes* 467, 468, 470, 472, 478, 483,  
     490, 492, 498, 507, 508, 576  
*Neotomodon* 644  
     *alstoni* 547  
*Neotomys* 639, 640, 644, 645, 646  
     *ebriosus ebriosus* 646  
     *vulturinus* 646  
*Neotropical region*, termite fauna of  
     491, 508ff  
*Nesiarchus nasutus* 298  
*nesiotis*, *Porphyriornis* 143  
*Nesocichla* 144ff  
     *eremita eremita* 145  
     *gordoni* 146  
     *procax* 146  
*Nesospiza* 157, 158  
     *acunhae* 147  
     *acunhae* 152  
     horny palate 151  
     *questi* 152  
     *goughensis* 148  
     *wilkinsi* 147  
     *dunnei* 152

- wilkinsi* 150  
 Nessorhamphidae 291  
*Nessorhamphus ingolfianus* 291  
 New Caledonia, Histeridae of 601ff  
*nicholsi*, *Casea* 396  
*niger*, *Melanosuchus* 339  
   *pluriradiatus*, *Chiasmodon* 297  
*nigricans*, *Molossus rufus* 701  
*nigro-ocellatum*, *Centrobranchus* 286  
*nimbraria*, *Vinciguerra* 273  
*Nitiditermes* 511  
*nitiduloides*, *Saprinus* 610  
*nivalis*, *Ischnoglossa* 698  
   *Leponycteris* 698  
*Noditermes* 511  
*norvegicus*, *Rattus* 648  
*Nothocercus bonapartei bonapartei* 12  
   *fuscipennis* 13  
   *julius* 12  
   *venezuelensis* 14  
*Notolychnus valdiviae* 288  
*novascotiae*, *Cephalaspis* 454  
*novae-scotiae*, *Pteraspis* 452  
*nubilus*, *Ampullarius* 303  
*nuchalis*, *Calamaria* 204  
   *Natrix* 174  
*nudiventris*, *Taphozous* 595  
*Nycteris thebaica* 595
- obeliscus*, *Bulimulus* 322  
*obscura*, *Penelope* 18  
*obscurus*, *Eustomias* 282  
*obtusirostra*, *Margrethia* 270  
*Obusitermes* 497, 514  
*Occasitermes* 503, 514  
*occidentalis*, *Myripristis* 93  
*occipitalis*, *Calamaria* 204  
*Oculitermes* 503, 515  
*Odontophorus erythrops parambae* 21  
   *gujanensis buckleyi* 21  
   *marmoratus* 21  
   *hyperythrus* 22  
*Odontotermes* 469, 472, 473, 513  
*olivacea*, *Lepidochelys* 376  
*olivascens*, *Sicalis* 149  
   horny palate 151  
*olivensis*, *Reithrodon* 646  
*olssoni*, *Epiphragmophora* 336  
*onca*, *Panthera* 42  
*Onchus* 458, 459  
   *murchisoni* 449  
 Oneirodidae 299  
*opercularis*, *Holocentrus* 92, 100  
*Opheodrys major* 174  
 Ophiacodonta 387  
   distribution, geographic 390  
   geologic 390  
*Ophicephalus melanosoma* 54, 71  
   ecological distribution 82  
   food 71, 84  
   *melasoma* 71  
*Ophiderpeton* 531, 532
- Ophiderpetonidae 531  
*Ophiocara porocephala* 52, 76  
*Ophiocephalus melanosoma* 71  
*Ophiotermes* 494, 511  
*Ophthalmopelton macropus* 284  
*opisthopterus*, *Melamphaes* 296  
*Oriensubulitermes* 515  
*ornata*, *Calamaria* 204  
*ornatus*, *Tremarctos* 25ff  
   jaw mechanics 40  
   mandibular articulation 38  
   muscles 32  
   salivary glands 31  
   skull 26  
   tongue and oral vestibule 29  
   vessels and nerves 31  
*Ornithoctona erythrocephala* 21  
*Ortalix garrula choacoensis* 20  
   *garrula* 20  
   *mira* 20  
   *guttata cauae* 19  
   *columbiana* 19  
   *guttata* 19  
*Orthognathotermes* 469, 494, 512  
*Orthotermes* 485, 512  
*Oryzomys* 644  
   *albigularis* 214, 242  
   *angouya* 654  
   *buccinatus* 654, 660  
   *flavicans* 657  
   *keaysi* 239  
   *longicaudatus* 654  
   sp. 251  
*oryzomysi*, *Amblyopinus* 240  
*osculus*, *Holocentrus* 91, 104  
*osgoodi*, *Tinamus* 10  
*Ostariophysus* 127  
   ecological distribution 82ff  
*Osteochilus spilurus* 53, 63  
   ecological distribution 82  
*Ostichthyes* 96  
*Ostichthys* 122  
   *trachypoma* 123  
*Otonycteris hemprichi hemprichi* 595  
*ovatus*, *Ichthyococcus* 273  
*ocularis*, *Jaminia* 438ff  
*Oxyeleotris urophthalmus* 52, 77  
   food 77, 85  
*Oxymycteris judex* 249  
   *rufus* 249  
*Oxyurichthys tentacularis* 55, 78
- pacae*, *Amblyopinus* 244  
*Pachyotus* 595  
*pacificum*, *Platysoma* 605, 607, 629  
*pacificus*, *Platylister* 629  
 Palaearctic region, termite fauna of 481,  
   508ff  
*Palaeastacus walkeri* 445  
*palans*, *Carcinops* 618  
*pallida*, *Cyclothone* 272  
*pamplonensis*, *Drymaeus* 314



- Panthera onca*, weights of jaw muscles 42  
 Pantotheria 689  
*Papio maimon* 44  
 Papuan region, termite fauna of 477ff,  
     503, 508ff  
*papyraceus*, *Ampullarius* 303  
*Paracapritermes* 469, 477, 503, 512  
*Paracornitermes* 468, 473, 487, 495, 502,  
     514  
 parallelism 385ff  
*Paramastus* 429  
*parambae*, *Odontophorus erythroptus* 21  
 Paramyidae 217  
*Paraneoterme*s 473, 490, 508  
*Parapacryptes rictuosus* 55, 80  
     food 80, 85  
*Parareptilia* 387  
*Parastylotermes* 507  
*Parasubulitermes* 515  
 Pareiasauridae 387, 392, 397ff  
*parnelli*, *Chilonycteris* 696  
*Paromalus forestieri* 619  
     *pumilio* 616  
     *quattuordecimstriata* 617  
     *trogodytes* 618  
*Parophiocephalus unimaculata* 70  
*Parotermes* 490, 507  
*Parrhinotermes* 478, 500, 509  
*parvidens*, *Sturnira lilium* 700  
*Parvitermes* 497, 514  
*patagonicus*, *Phrygilus* 149  
     horny palate 151  
*patasensis*, *Epiphragmophora* 327  
*pavimentata*, *Calamaria* 193, 204  
     *formosana* 205  
     *pavimentata* 204  
 Pearson, Oliver P. 215, 252, 254  
*pearsoni*, *Edrabius* 219, 258  
*pedialota*, *Bonapartia* 269  
*pelamidis*, *Rhynchichthys* 93  
*pelecanoides*, *Eurypharynx* 289  
*Pellona kampeni* 57  
*Pelycosauria* 387, 400  
     distribution, geographic 390  
     geologic 390  
*pendleburyi*, *Calamaria* 178, 191, 192,  
     205  
*Pene* 429  
*Penelope montagnii montagnii* 18  
     *purpurascens aequatorialis* 17  
     *jacuáçu* 18  
 Pennsylvanian, Late 387  
     fauna 390  
*Perca ascensionis* 100  
     *rufa* 104, 107  
 Perceosoces, ecological distribution 81-83  
 Percoidea, ecological distribution 81-83  
*perforata*, *Bulimulus* 320  
     *Taphozous* 580, 595  
*Pericapritermes* 469, 486, 495, 501, 511  
*Periophthalmus schlosseri* 79  
     *schlosseri* 55, 79  
     *variabilis* 55, 79  
*perlatum*, *Holocentrum* 104, 107  
 Permian fauna 385ff  
*Peromyscus* 644  
     *boylii levipes* 545  
     *difficilis amplus* 547  
     *quatemalensis* 231, 544, 548  
     *hylocetes* 548  
     *maniculatus labecula* 548  
     *truei gratus* 548  
*Peronaeus*, *Bulimulus* 321  
*perroudi*, *Platysoma* 629  
*personata*, *Chilonycteris* 696  
*perspicax*, *Penelope* 17  
 Peru, shells from 304ff  
*peruanus*, *Edrabius* 259  
 Peruvian Zoological Expedition (1953)  
     221, 304ff  
     (1954) 330ff  
*peruviana*, *Helicina* 304  
     *Succinea* 305  
*peruvianus*, *Amblyopinodes* 250  
*peruvianus*, *Radiodiscus* 308  
*Petalasoma hirtipes* 626  
*pfefferi*, *Calamaria* 205  
*phaeocheilus*, *Bulimulus* 334  
*philippianus*, *Edrabius* 212, 215, 254,  
     255  
*Phlegethontia* 523ff  
     *linearis* 531  
     *mazonensis* 523ff  
     *serpens* 531  
 Phlegethontidae 524, 531  
*Photonectes dinema* 282  
*Photostomias guernei* 283  
*photothorax*, *Lampanyctus* 289  
*Phrygilus patagonicus* 149  
     horny palate 151  
*Phyllostoma lineatum* 403, 409  
*Phyllotis* 644  
     *boliviensis* 254  
     *darwini* 234  
     *sublimus* 234  
 phylogeny of Cheloniidae 363ff  
*physodes*, *Hesperomys* 666  
     *Holochilus* 647, 666  
     *Mus* 660, 665  
     *Reithrodon* 646  
*piceus*, *Amblyopinodes* 248  
*Pilotermes* 511  
*Pilsbryna*, *Epiphragmophora* 327  
*Pimelodus sagor* 64  
*Pipile cumanensis cumanensis* 21  
*Pipistrellus kuhli kuhli* 595  
*Plaestius* 626  
*Planicapritermes* 495, 512  
 plastron, of Cheloniidae 377  
     of *Procolpachelys* 357  
*platycheilus*, *Neopetraeus* 311  
*Platylister pacificus* 629  
     *urvillei* 630  
*Platylomalus forestieri* 605, 608, 619

- saucius* 619  
*umbilicatus* 619  
*ricloriae* 619  
*Platypsyllus castoris* 248  
*Platysoma* 627  
   *abruptum* 629  
   *connexum* 605, 607, 628, 629  
   *contiguum* 629  
   *enode* 629  
   *frontosum* 631  
   *laere* 628  
   *montrouzieri* 605, 607, 629  
   *pacificum* 605, 607, 629  
   *perroudi* 629  
   (*Platylister*) *montrouzieri* 629  
   *urvillei* 630  
   (*Platysoma*) *connexum* 628  
   *montrouzieri* 629  
   *pacificum* 629  
   *urvillei* 630  
   *querulum* 628  
   *oronense* 631  
   *urvillei* 605, 608, 630  
   *vanum* 631  
*plebius*, *Polydactylus* 55, 70  
   food 85  
*Plectolus auritus christiei* 595  
*Plectognathi*, ecological distribution 83  
*Plectrypops* 96, 122  
*Plesiochelyidae* 369  
*plicata*, *Balantiopteryx* 695  
*pliopterus*, *Chirostomias* 281  
*Plioterms* 507  
*pluriradiatus*, *Chiasmodon niger* 297  
*Poecilia fusca* 76  
*poecilopus*, *Rhamphoberyx* 93  
*poecilus*, *Drymaeus* 332  
*poeti*, *Gerres* 53, 74  
   food 74, 85  
*polillensis*, *Calamaria* 205  
*Poliospiza* 147  
   *burtoni* 149  
   horny palate 151  
*politus*, *Aeletes* 610  
*Polydactylus plebius* 55, 70  
   food 85  
*Polynemus tetradactylum* 69  
*Polyporaceae* 561  
*Pomadasyssys hasta* 53, 55, 73  
   food 73, 85  
   *maculatus* 53, 73  
   food 74, 85  
*Pomiatus olivieri* 433  
*ponsonbyi*, *Drymaeus* 332  
*popelairianus*, *Strophocheilus* 309  
*porocephala*, *Eleotris* 76  
   *Ophiocara* 52, 76  
*Porotermes* 468, 470, 471, 476, 484, 491,  
   492, 498, 502, 509  
*Porotermitinae* 516  
*porphyreus*, *Thaumastus* 309  
*Porphyrio* 143  
*Porphyriornis nesiotis comeri* 142, 143  
   *nesiotis* 143  
*Porphyrobaphe iostoma* 331  
*Porphyryla* 143  
   *martinica* 153  
*Postsubulitermes* 515  
*Potamopyrgus subgradatus* 304  
*poweriae*, *Vinciguerria* 273  
*prakkei*, *Calamaria* 190, 192, 205  
*praslin*, *Holocentrus* 92  
*Proboscitermes* 512  
*Procaprithermes* 511  
*procar*, *Nesocichla* 146  
*Procolophonidae* 387, 392, 400  
*Procolpochelys grandaeva* 345ff  
   carapace 349  
   phylogeny 363ff  
   plastron 357  
   vertebrae 360  
*Procornitermes* 472, 473, 495, 514  
*Procryptotermes* 472, 473, 478, 490, 492,  
   498, 508  
*Procubitermes* 511  
*productum*, *Holocentrum* 100  
*productus*, *Termitopteryx* 572, 575  
*Proelectrotermes* 507  
*Profastigitermes* 511  
*Prohamitermes* 493, 510  
*Prokalotermes* 507  
*Promirotermes* 469, 485, 486, 494, 512  
*Proreithrodon* 646  
   *chapalmalense* 646  
   *incipiens* 646  
*Prorhinotermes* 471, 477, 478, 479, 488,  
   489, 493, 500, 509  
   *canalifrons* 488  
*proteiformis*, *Bulimulus* 335  
*Protermes* 513  
*Proterolhyris* 391  
*proteus*, *Bulimulus* 335  
*Protocaprithermes* 503, 511  
*Protoglyptus*, *Bulimulus* 336  
*Protohamitermes* 468, 480, 510  
*Protostegidae* 365  
*proximus*, *Saprinus* 610  
*Psammosteus* cf. *anglicus* 449  
*Psammotermes* 473, 479, 483, 484, 499,  
   509  
   *voeltzkowi* 488  
*Psammotermes* 516  
*Pseudacanthotermes* 486, 513  
*Pseudocaprithermes* 512  
*Pseudogobius bikolanus* 52, 54, 79  
   sp. A 55, 79  
   sp. B 52, 79  
*Pseudoguppya*, *Habroconus* 308  
*pseudolatissimus*, *Leptocephalus* 290  
*Pseudomicrotermes* 510  
*psilotis*, *Chilonyceteris* 696  
*Psittirostra* 148  
*Psophocichla* 144  
*Pteraspis* cf. *crouchi* 449



- leathensis* 452  
*novae-scotiae* 452  
*vogti* 452  
**whitei** 450  
*Pteronotus davyi fulvus* 697  
*Pteryx* 562  
Ptiliidae 561ff  
  habitat 561  
  termitophilous adaptations 563  
*Ptinella* 562  
*Ptyssophorus* 646  
  *elegans* 646  
  *rotundatus* 646  
*Pugnitermes* 511  
*pumilio*, *Carcinops* 605, 608, 616, 619  
  *Carcinus* 616  
  *Paromalus* 616  
**punae**, *Amblyopinus* 227  
*punctatissimus*, *Holocentrus* 92, 95  
*punctulatus*, *Holocentrus* 112  
*punctiger*, *Abraeus* 624  
  *Bacanius* 605, 606, 622, 624, 625  
*puntana*, *Epiphragmophora* 328  
*Puntius sealei* 52ff, 62  
  ecological distribution 82  
  food 62, 84  
  predator of 62  
*Pupa chondriformis* 419  
  *michoni* 432  
  *septemdentata* 422  
*pupiformis*, *Bulimulus* 325  
*Puppigerus* 345  
*purpurascens*, *Penelope* 17  
*pusillus*, *Dermogenys* 52, 54ff, 66  
  *Eptesicus* 595  
  *Lampanyctus* 289  
Putnam Formation 389  
**Pycnopteryx** 562, 563, 567  
  *schmidti* 562, 567, 570  
  sp., 572  
**pyrgidium**, *Bulimulus* 321  
  
*Quasitermes* 469, 488, 512  
*quattuordecimstriata*, *Carcinops* 616  
  *Dendrophilus* 616  
  *Paromalus* 617  
*Quechua*, *Thaumastus* 331  
*Quediini* 211  
*querulum*, *Platysoma* 628  
*questi*, *Nesospiza acunhae* 152  
*quinquetaeniata*, *Calamaria* 205  
  
radiation, adaptive 388, 399  
*Radiconus*, *Radiodiscus* 308  
*Radiodiscus* (*Radioconus*) *andium* 308  
  (*Radiodiscus*) *peruvianus* 308  
*Rasbora sumatrana* 52ff, 60  
  ecological distribution 82  
  food 60, 84, 88  
*ratada* 655ff  
rats, marsh 639ff  
*Rattus norvegicus* 648  
  
*raveni*, *Calamaria* 205  
*rebertschki*, *Calamaria* 205  
*recifinus*, *Vampyrops* 413  
*reconditus*, *Bulimulus* 320  
*reinhardti*, *Hygophum* 285  
*Reithrodon* 639, 640, 644, 646  
  *auritus* 646  
  *caurinus* 646  
  *cuniculoides* 646  
  *olivensis* 646  
  *physodes* 646  
  *typicus* 646  
**remingtoni**, *Bacanius* 605, 606, 622, 624  
reptiles of Permian 385ff  
  geographic distribution 389  
*Reticulitermes* 470, 471, 483, 489, 490, 507, 509  
*revinctus*, *Bulimulus* 316  
*Rhamphoberyx* 93  
  *leucopus* 94  
  *poecilopus* 93  
*Rhinoberyx* 93  
  *chryseus* 93  
*Rhinolophus clivus* *brachygnathus* 595  
  *lobatus* 595  
  *mehelyi* 595  
*Rhinopoma hardwickei cystops* 595  
  *microphyllum* 595  
*Rhinoterms* 469, 493, 509  
  *marginalis* 493  
Rhinotermitidae 476, 479, 505–507, 509  
  introductions 474  
Rhinotermitinae 516  
*rhodolarynx*, *Neopetraeus* 311  
*Rhynchichthys* 93  
  *brachyrhynchus* 93  
  *pelamidis* 93  
*Rhynchohyalus natalensis* 284  
*Rhynchortyx cinctus hypopiis* 22  
*Rhynchotermes* 468, 495, 514  
*rictuosus*, *Apocryptes* 80  
  *Parapocryptes* 55, 80  
  food 80, 85  
ridley turtles 345  
*riparum*, *Holocentrum* 109  
*rivasii*, *Bulimulus* 336  
*robustior*, *Urotirainus grandis* 564  
*robustus*, *Melamphaes* 297  
rodents, cricetine 639  
  dentition 643ff  
  sigmodont 639ff, 646  
  dentition 643  
  skull 640  
*rogersi*, *Atlantisia* 142  
*romeri*, *Cotylorhynchus* 396  
*Romeria* 391  
*Romerolagus diazi* 548  
*rosea*, *Harpage* 95  
*rostratum*, *Holocentrum* 99  
*Rostrotermes* 511  
*Rothia* 393, 398

- Rotunditermes* 496, 514  
*rotundus murinus*, *Desmodus* 700  
*roulei*, *Leptocephalus* 290  
*Rousettus aegyptiacus aegyptiacus* 595  
*Rowettia* 144, 147-150, 158  
   *goughensis* 142  
     horny palate 151  
*rubiginosa*, *Chilonycteris* 696  
   *mexicana*, *Chilonycteris* 696  
*rubra*, *Craz* 17  
   *Sciaena* 104  
*rubripes*, *Carcinops* 618, 619  
   *Epiurus* 618  
*rudistriatus*, *Bulimulus* 318  
*rufa*, *Perca* 104, 107  
*ruficeps*, *Tinamus major* 10  
*rufus*, *Holocentrus* 91, 102, 104, 122ff  
   *Molossus* 701  
*Rugitermes* 477, 478, 491, 492, 498, 508  
   *arthuri-muelleri* 576  
*ruppelli*, *Tadarida teniotis* 595  
*russatus*, *Hesperomys* 666  
   *Holochilus* 647, 661  
  
*sagor*, *Pimelodus* 64  
   *Tachysurus* 55, 64  
     food 85  
*sammara*, *Holocentrus* 92, 94, 100  
 San Angelo Formation 385  
   fauna of 393ff, 398  
*sanborni*, *Amblyopinus* 238  
*sanctipauli*, *Holocentrus* 91, 100  
 Sapriniinae 605, 608  
*Saprinus artensis* 605, 608, 609  
   *australasiae* 609  
   *cyaneocupreus* 610  
   *cyaneus* 605, 608  
   *laetus* 609  
   *nitiduloides* 610  
   *proximus* 610  
   *speciosus* 609  
   *subnitidus* 605, 608, 610  
   *tasmanicus* 609  
*Sargocentron*, *Holocentrus* 92  
*saturatus*, *Tinamus major* 9  
*saucius*, *Platyomalus* 619  
*sauleyi*, *Bulimus* 416  
   *Jamania* 416  
 scales, head, in *Cheloniidae* 376  
*Scatophagus argus* 52, 54, 55, 75  
*Schedorhinotermes* 469, 478, 479, 484,  
   493, 500, 509  
*schlegeli*, *Calamaria* 205  
*schlosseri*, *Gobius* 79  
   *Periophthalmus* 79  
   *schlosseri* 55, 79  
*schmidti*, *Acritus* 605, 607, 612, 614  
   *Calamaria* 174, 178, 197, 205  
   *Drymaeus* 314  
   *Enoploclytia walkeri* 445  
   *Pycnopteryx* 562, 567, 570  
   *Strepsylla* 544  
  
   *Thaumastus* 309  
*schmidti*, *Edriolychnus* 299  
*Eustomias* 282  
*scholviensis*, *Thaumastus* 309  
*Sciaena argentimaculata* 73  
   *jaculatrix* 74  
   *rubra* 104  
*sciureus berbicensis*, *Holochilus* 669  
   *Holochilus* 647, 659, 661, 666, 667, 669  
 Sciuromorpha 217  
*sclerops apaporiensis*, *Caiman* 340  
   *Caiman* 339  
*scolodonta*, *Streptaxis* 329  
*scolopaceus*, *Nemichthys* 291  
*Scomber equulus* 74  
   *ignobilis* 72  
 Scopelarchidae 284  
*Scopelarchus anale* 284  
*Scutalus*, *Bulimulus* 315ff, 334  
*scutulatus*, *Bulimulus* 319  
*scythrops*, *Holocentrus* 92, 100  
*sealei*, *Barbodes* 62  
   *Puntius* 52ff, 62  
     ecological distribution 82  
     food 62, 84  
*Searsia koefoedi* 269  
 Searsidae 269  
   *semenlini*, *Habroconus* 308  
   *semiannulata*, *Calamaria* 205  
   *septedentata*, *Jamania* 421, 422ff  
   *septentrionalis*, *Calamaria* 169, 178,  
     194, 206  
*Serinus* 147  
   *flaviventris* 139, 155  
   *sulphuratus* 149  
     horny palate 151  
*serotinus*, *Drymaeus* 313, 332  
*serpens*, *Phlegelthontia* 531  
*serpentina*, *Derichthys* 290  
*Serranus nebulosus* 72  
*Serritermes* 515  
*Serritermitinae* 497, 505, 506, 515, 516  
*Serrivomer beani* 291  
   *brevidentatus* 291  
*Serrivomeridae* 291  
*sexdentata*, *Jamania* 436ff  
 sharks, xenacanth 388  
*Sicalis olivascens* 149  
   horny palate 151  
*sicciferum*, *Holocentrus* 95, 109  
*Sigmodon* 639, 640, 644, 645, 647, 648,  
   652, 653  
   *hispidus* 647  
   *rulpinus* 657  
*Sigmomys* 647  
*Silvestritermes* 515  
*simalurensis*, *Calamaria* 189, 190, 192,  
   206  
*similis*, *Amblyopinodes* 251  
*simonyi*, *Benthodesmus* 298  
*simpsoni*, *Mus* 648  
*sinaloae*, *Molossus* 700

- Siphonaptera 541  
*sismondai*, *Chelonia* 366, 378  
*sloanei*, *Chauliodus* 277  
*smithi*, *Calamaria* 206  
*snyderi*, *Syntermes* 562, 570, 572  
*soborna*, *Corica* 52, 54, 57  
 Solenichthyes, ecological distribution 83  
*sondaica*, *Calamaria* 206  
*soricina leachi*, *Glossophaga* 697  
*soronense*, *Platysoma* 631  
*soui*, *Crypturellus* 15  
 Spalacotheriidae 689  
*Spalacotherium* 690, 692  
**Spalacotheroides** 690, 692  
   **bridwelli** 690  
     dentition 690ff  
     specialization, in *Calamaria* 168  
     *speciosus*, *Saprinus* 609  
*Speculitermes* 480, 493, 500, 510, 567  
   termitophiles of 562  
*Sphaeroterms* 513  
*Sphenacodon* 392  
*Sphenacodontia* 387  
   distribution, geographic 390  
   geologic 390  
*Sphyraena jello* 54, 68  
   food 68, 84  
*Spicoterms* 494, 511  
*spilurus*, *Dangila* 63  
   *Osteochilus* 53, 63  
     ecological distribution 82  
*spinalis*, *Achalinus* 174  
*spinifer*, *Holocentrus* 92  
**spinipennis**, *Amblyopinus* 234  
*Spinitermes* 485, 494, 511  
*spinosissimus*, *Holocentrus* 92  
*Spinus* 147  
   *spinus* 149  
     horny palate 151  
*Spirosulcatus*, *Bulimulus* 336  
*splendens*, *Leptocephalus* 290  
*squamipes*, *Hesperomys* 666  
   *Holochilus* 647  
   *Nectomys* 653  
*stahlknechti*, *Calamaria* 192, 206  
 Staphylininae 211, 221  
 Stegocephali 531  
 Stephanian fauna 389ff  
*Steppesaurus* 393, 397ff  
*Sternaularx* 605, 626  
   *caledoniae* 605, 607, 626  
   *zealandica* 626  
 Sternoptychidae 274  
   vertical distribution 275  
*Sternoptyx diaphana* 277  
*Stolephorus commersoni* 52, 56  
   food 56, 84  
   *tri* 54, 56  
   food 84  
*Stolotermes* 468, 470, 471, 476, 484, 498, 502, 509  
   Stolotermitinae 516  
   *Stomias boa ferox* 278  
     *brevibarbatu*s 279  
   Stomiatiidae 278  
   *Strepsylla* 541ff  
     **dalmati** 541  
     *davisae* 546  
     *fautini* 546  
     *mina* 541  
     **schmidti** 544  
     *taluna* 546  
     *villai* 546  
   Streptaxidae 329  
   *Streptaxis (Scolodonta) andivaga* 329  
   *strongylura*, *Belone* 66  
   *strongylurus*, *Tylosorus* 53, 66  
     food 84  
   Strophocheilidae 309, 330  
   *Strophocheilus incarum* 331  
     *maximus vestitus* 309  
     (*Microborus*) **tenuis** 330  
     *popelairianus* 309  
     **tenuis** 330  
   *Sturnira lilium parvidens* 700  
   *styani*, *Trirhinopholis* 174  
   *Stylotermes* 509  
   Stylotermitinae 516  
     *subgradatus*, *Potamopyrgus* 304  
     *subhybridus*, *Goniostomus* 314  
     *subjussieui*, *Bulimulus* 336  
     *subnitidus*, *Saprinus* 605, 608, **610**  
     *suborbitalis*, *Holocentrus* 92, 100, 126, 132  
     *subulidens*, *Caulolepis* 293  
   *Subulitermes* 469, 481, 487, 489, 496, 497, 502, 515  
     *leucops* 502  
     *undecimus* 502  
   *Succinea aequinoctialis* 305  
     *peruviana* 305  
   Succineidae 305  
   *sulcidens*, *Jaminia* 438ff  
   *sulcisternus*, *Bacanius* 620  
   *sulphuratus*, *Serinus* 149  
     horny palate 151  
   *suluensis*, *Calamaria* 178; **190**, 192, 206  
   *sumatrana*, *Calamaria* 191, 192, 206  
     *Rasbora* 52ff, **60**  
     ecological distribution 82  
     food 60, 84, 88  
   *sumatranus*, *Leuciscus* 60  
   *supralateralis*, *Lampanyctus* 289  
   *Symmetrodonta* 689  
   *Sympholis* 168  
   *Synacanthotermes* 468, 473, 513  
   *Synapsida* 387  
   Synbranchoidea, ecological distribution 83  
   Synentognathi, ecological distribution 83  
   *Syngnathus brachyurus* 67  
     *carce* 67

- Synhamitermes* 510  
*Syntermes* 468, 473, 495, 514  
   *grandis* 564  
   *molestus* 562, 564, 571  
   *snyderi* 562, 570  
   termitophiles of 561  
*Syntermorpha microphthalma* 572  
*Systrophia (Systrophiella) andivaga* 308  
*Systrophiella, Systrophia* 308  
 Systrophiidae 308
- taaningi, Lampanyctus* 289  
*Tachysurus caelatus* 55, 64  
   food 85  
   *sagor* 55, 64  
   food 85  
   *venosus* 55, 65  
   food 84  
*Tadarida aegyptiaca aegyptiaca* 595  
   *teniotis ruppelli* 595  
*tahapisi, Emberiza, horny palate* 151  
*tahilicum, Holocentrus* 95  
*taluna, Strepsylla* 546, 547  
*tanneri, Echiosstoma* 281  
*Taphozous nudiventris* 595  
   *perforatus* 580  
   *haedinus* 580, 595  
   *perforatus* 595  
*Tapinocephalia* 387, 393, 397  
*Tappenosaurus* 395, 397  
*Tarditermes* 515  
*tasmanicus, Saprinus* 609  
*teniotis ruppelli, Tadarida* 595  
*tentacularis, Gobius* 78  
   *Oxyurichthys* 55, 78  
*tenuipinnis, Eptesicus* 595  
*Tenuirostritermes* 472, 481, 491, 496,  
   497, 514  
*tenuis, Strophocheilus* 330  
*Termes* 468, 469, 473, 477, 478, 480,  
   485, 488, 494, 507, 512  
   *fur* 474  
   *inquilinus* 474  
 termites, zoogeography 465ff  
 Termitidae 479, 505–507, 510–512  
 Termitinae 485, 487, 494, 505, 506, 511,  
   512, 516  
*Termitogeton* 509  
 Termitogetoninae 516  
 termitophiles, of Kalotermitidae 563  
   of *Speculitermes* 562  
   of *Syntermes* 561, 562  
*Termitopteryx* 563, 572  
   *productus* 572, 575  
   sp. 576  
 Termopsinae 482, 516  
*Termopsis* 482, 507  
*tetradactylum, Eleutheronema* 55, 69  
   food 85  
   *Polynemus* 69  
 Tetragonuridae 298  
*Tetragonurus atlanticus* 298  
*Tetraodon, ecological distribution* 81, 86  
   *fluviatilis* 54, 55, 80  
   ecological distribution 82  
   food 80, 85  
   *kretamensis* 52, 55, 81  
   ecological distribution 82  
   food 81, 85  
*Tetrodon fluviatilis* 80  
*teysmanni, Clarias* 52, 54, 65  
   ecological distribution 82  
   food 65, 84  
*Thaptomys nigrata* 249  
*Thaumastus bitaeniatus* 309  
   *conspicuous* 331  
   *jelskii* 309  
   *porphyreus* 309  
   (*Quechua*) *conspicuous* 331  
   *schmidti* 309  
*thebaica, Nycteris* 595  
 Thecophora 368  
 Therapsida 387, 392, 400  
   distribution, geographic 390  
   geologic 390  
   origin 388  
 Theria 689  
 Theriodonta 387, 397  
   distribution, geographic 390  
   geologic 390  
   origin 388  
 Therocephalia 387, 397  
*Thomasomys* 232, 644  
   *aureus nicefori* 232  
   *laniger* 239  
*Thoracotermes* 511  
*Thrissa hamiltoni* 56  
*Thrissocles hamiltoni* 53, 56, 58  
   food 56, 84  
*Thrysidium* 532  
*thula, Egretta* 152  
*Thyreoxenus* 478  
*tibetanus, Ursus* 26ff  
*tibialis, Carcinops* 617  
 ticks 579ff  
*tiere, Holocentrus* 92  
*Tinamus guttatus* 12  
   *major saturatus* 9  
   *osgoodi hershkovitzi* 10  
*Tinodon* 692  
 Titanosuchia 387, 393, 397  
   origin 388  
*tolteca, Stenoderma* 698  
*toltecus, Artibeus cinereus* 698  
*torrei continentis, Chilonycteris* 696  
*tortugae, Holocentrus* 112  
 Toxochelyidae 365  
   plastron 377  
 Toxotes  
   *chatareus* 52, 54, 55, 75  
   food 75, 85  
   *jaculator* 74  
   *jaculatrix* 54, 74  
   food 74, 85

- Traquairaspis* 449  
*travassosi*, *Amblyopinodes* 249  
*Tremarctos ornatus* 25ff  
   jaw mechanics 40  
   mandibular articulation 38  
   muscles 32  
   salivary glands 31  
   skull 26  
   tongue and oral vestibule 29  
   vessels and nerves 31  
*Tremarctotherium* 25  
*Tretomys atavus* 646  
*tri*, *Engraulis* 56  
   *Stolephorus* 54, 56  
   food 57  
 Tribalinae 601  
*Tribalus* 601  
 Trichiuridae 298  
 Trichopterygidae 561  
*Trichotermes* 511  
*tridens*, *Asellia* 595  
*Trinervitermes* 473, 481, 486, 501, 514  
 Trinity Sand Formation 689  
*tripunctulatus*, *Valenciennellus* 274  
*Trirhinopholis styani* 174  
 Tristan da Cunha, land birds of 139ff  
*trivittata*, *Beanea* 95  
*trogodytes*, *Carcinops* 605, 608, 618  
   *Hister* 618  
   *Paromalus* 618  
*tropica*, *Calamaria* 168, 192, 206  
*truei gratus*, *Peromyscus* 548  
*Tuberculitermes* 494, 511  
*tumens*, *Nenia* (*Neniactra*) *adusta*  
   305  
*Tumulitermes* 469, 477, 503, 514  
*tupacii*, *Bulimulus* 316  
*Turdus* 144  
*turritus*, *Bulimulus* 336  
 turtles, caretine 345ff  
   loggerhead 345  
   ridley 345  
*Tylosurus strongylurus* 53, 66  
   food 84  
*Typhlogeophis* 168  
*typicus*, *Reithrodon* 646  
  
*ulmeri*, *Calamaria* 206  
*Ulmeriella* 482, 490, 499, 507  
*umbilicatellus*, *Bulimulus infundibulum*  
   320  
*umbilicatus*, *Platylomalus* 619  
*umbratus*, *Vampyrops* 408  
*undecimus*, *Subulitermes* 502  
*undulatus*, *Crypturellus* 16  
*Unguitermes* 511  
*unicolor*, *Neopetraeus cora* 335  
*uniformis*, *Calamaria* 206  
*unimaculata*, *Betta* 53, 54, 70  
   ecological distribution 82, 86  
   food 70, 84  
   *Parophiocephalus* 70  
  
*unipennis*, *Melanonon* 291  
*Uralotermes* 507  
 Uralotermitidae 506, 507  
 Urodela 531  
*urophthalmus*, *Eleotris* 77  
   *Oxyeleotris* 52, 77  
   food 77, 85  
*Urotraiinus* 561-563, 564, 567  
   *bidentatus* 563, 564  
   *grandis* 564  
   *robustior* 564  
   *molesti* 564  
*ursinus*, *Melursus* 25  
*Ursus americanus* 25  
   *tibetanus* 26ff  
*urubambensis*, *Nenia angrandi* 306  
*urvillei*, *Hololepta* 630  
   *Platylister* 630  
   *Platysoma* 605, 608, 630  
  
*Vaimosa bikolana* 79  
*valdiviae*, *Notolychnus* 288  
 Vale Formation 389  
   fauna 390ff  
*Valenciennellus tripunctulatus* 274  
*Vampyrops* 403  
   *dorsalis* 407  
   *fumosus* 405  
   *helleri* 411  
   *infuscus* 405  
   *lineatus* 408, 409, 411  
   *recifinus* 413  
   *umbratus* 408  
   *vittatus* 405  
   *zarhinus* 411  
*vanum*, *Platysoma* 631  
*variabilis*, *Periophthalmus* 55, 79  
*Velocitermes* 469, 496, 514  
*venezuelae*, *Holochilus* 661, 669, 670  
   *brasiliensis* 670  
*venezuelensis*, *Nothocercus* 14  
*venosus*, *Arius* 65  
   *Tachysurus* 55, 65  
   food 84  
*ventralis*, *Calamaria* 196, 206  
*vermiformis*, *Calamaria* 176, 178, 183,  
   185, 207  
   *vermiformis* 187, 207  
   *grayi*, *Calamaria* 207  
*Verrucositermes* 515  
 vertebrae, of *Caretta caretta* 360  
   of *Chelonia mydas* 360  
   of *Eretmochelys* 360  
   of *Lepidochelys* 360  
   of *Procolpochelys* 360  
 Vertiginidae 305  
*veruculum*, *Bulimulus* 320  
*vespertilionis*, *Argas* 586, 596, 598  
*vestitus*, *Strophocheilus maximus* 309  
*vexillarius*, *Holocentrus* 92, 96, 100, 109  
*victoriae*, *Platylomalus* 619  
*villai*, *Strepsylla* 546



- Vinciguerria attenuata* 273  
   *nimbraria* 273  
   *poweriae* 273  
*virgulata*, *Calamaria* 180, 207  
*vittatus*, *Vampyrops* 405  
*voeltzkowi*, *Psammotermes* 488  
*vogti*, *Pteraspis* 452  
*vulpinus*, *Hesperomys* 657, 664  
   *Holochilus* 647, 657, 661, 663  
   *Holochilus brasiliensis* 661, 662  
   *Mus* 660  
   *Sigmodon* 657, 668  
  
*warszewiczi*, *Nenia* 307  
*waterhousei*, *Amblyopinus* 219, 243  
*weiseri*, *Edrabius* 255  
*weyrauchi*, *Nenia* 308  
*whitei*, *Pteraspis* 450  
Wichita Group 389  
  fauna 390  
  
*wilkinsi*, *Nesospiza* 147, 150  
Winteriidae 284  
  
*xantherythrus*, *Holocentrus* 92  
  
*yapura*, *Crypturellus undulatus* 16  
*Yarella blakfordi* 272  
  
*zamboangensis*, *Calamaria* 207  
*zealandica*, *Sternaulax* 626  
*Zenarchopterus amblyurus* 52ff, 67  
  food 67, 84  
*zilchi*, *Drymaeus* 333  
*Zonibyx modestus* 154  
zoogeography, of New Caledonia His-  
  teridae 605ff  
  of termites 465ff  
*Zootermopsis* 489, 490, 507, 509  
*Zoothera* 144