

## THE PENAEOIDEA OF THE NORFANZ CRUISE

W. DALL

Dall, W. 2005 12 01: The Penaeoidea (Crustacea: Decapoda) of the NORFANZ Cruise. *Memoirs of the Queensland Museum* 51(2): 407-422. Brisbane. ISSN 0079-8835.

The NORFANZ Cruise was a collaboration between Australian, New Zealand and French scientific organisations to investigate the biodiversity of the Norfolk Ridge and Lord Howe Rise benthic communities. Most of the stations occupied during this cruise (89%) were in water deeper than 300m, with 40% in depths exceeding 1000m. Accordingly the penaeoid fauna consisted mostly of deeper water species and were collected at 73 stations by trawls and sledges. All five families of the Penaeoidea were represented by 21 species, the Aristeidae being predominant, mostly *Aristeus mabahissae*, *Aristaeomorpha foliacea*, *Austropenaeus nitidus*, plus *Aristeus virilis*, *Aristaeopsis edwardsianus*, *Hepomadus tener*. Benthescymidae: *Benthescymus investigatoris*, *B. howensis*, *Gemadas gilchristi*, *G. kempfi*. Solenoceridae: *Gordonella kensleyi*, *Hadropenaeus lucasii*, *Haliporoides sibogae*, *Hymenopenaeus methalli*, *H. neptunus*, *H. obliquirostris*, *Solenocera comata*. Penaeidae: *Metapenaeus velutina*, *Funchalia villosa*. Sicyoniidae: *Sicyonia inflexa*, *S. truncata*. Details of location and depth of each species and the geographical range are given. As *Gordonella kensleyi* males were collected for the first time, a complete description can now be given. Examination of males of *Benthescymus urinator howensis* indicate it should be raised to specific rank. □ Penaeoidea, NORFANZ Cruise, Norfolk Ridge, Lord Howe Rise.

W. Dall, Queensland Museum, PO Box 3300, South Brisbane, Queensland 4101, Australia; 20 June 2005

The NORFANZ Cruise was planned to investigate the marine biodiversity of the Norfolk Ridge and Lord Howe Rise seamount and slope communities. It was a joint investigation between Australian, New Zealand and French scientific organisations, using the New Zealand R.V. Tangaroa. The scientific crew was made up from a rotation of personnel from various institutions: New Zealand (Te Papa and NIWA), Australia (CSIRO, Australian Museum, Museum Victoria, NT Museum, Queensland Museum, and University of Tasmania), France (IRD, MNHN), USA (California Acad. Sciences).

The Norfolk Ridge and Lord Howe Rise are prominent bathymetric features of the Tasman Sea between Australia and New Zealand. They are considered to be part of the old coastline of Gondwanaland. Parts of these ridges rise to chains of seamounts and plateaus 200–1000m below the surface. Previous limited investigations have found that some localities support rich and diverse communities, characterised by high levels of endemism.

The objectives of the Cruise were to sample communities and document the marine diversity from 14 seamounts and slopes to at least 1500 m depth. The Cruise began on 9 May, 2003 with the first station at 34°06'S, 171°39'E to the west of Three Kings Islands (near the northern tip of the

North Island of New Zealand) and proceeded north along the Norfolk Ridge to 26°22'S, 167°01'E; turned west on a course of about 250° to Middleton Reef, 29°14'S, 159°06'E; south to Lord Howe Island, 31°45'S, 159°19'E; then set an easterly course to the West Norfolk Ridge, 34°12'S, 163°21'E, finally turning southeasterly along the West Norfolk Ridge approximately parallel to the original track, finishing on 7 June, 2003. A total of 168 stations were occupied, including 15 CTD and 9 photographic stations (Clark et al., 2003). Williams & Gowlett-Holmes (2003) provided a progress report.

Only 73 of the 168 stations yielded identifiable penaeoids (Table 1.). Most of these (34%) were collected by the ORH trawl; 26% by the Sherman epibenthic sledge; 19% by the "Ratecatcher" trawl, 15% by the beam trawl and the remainder by the NIWA sled and midwater trawl. The last was disappointing as a number of penaeoids have been shown to be epibenthic or bathypelagic, and thus likely to be caught by this device (Griffiths & Brandt, 1983; Kikuchi & Nemoto, 1991).

All 5 families of the Penaeoidea represented by 21 species were collected, but the Aristeidae were predominant. Nearly all have been recorded in Australian waters (Dall, 1999, 2001). Species distributions are discussed below.

## SYSTEMATICS

## Superfamily PENAEOIDEA

## Family ARISTEIDAE Wood-Mason, 1891

*Aristaena* Wood-Mason, 1891: 278.

*Aristaenae* Alcock, 1901: 27; Ramadan, 1938: 36; Kubo, 1949: 193.

*Aristeinae* Bouvier, 1908: 13; Balss, 1957: 1516; Crosnier, 1978: 14.

*Aristeidae* Crosnier, 1978: 14; Burkenroad, 1983: 281; De Freitas, 1985: 3; Pérez Farfante & Kensley, 1997: 175; Dall, 2001.

*Aristaeidae* Grey et al., 1983: 13, 14; Dall et al., 1990: 58.

For diagnoses and keys see Pérez Farfante & Kensley, 1997 and Dall, 2001.

***Aristaeomorpha foliacea* (Risso, 1827)**

*Penaeus foliacea* Risso, 1827: 69pl.2, fig.6; H. Milne Edwards, 1837: 418; Miers, 1878: 307.

*Aristeus rostridentatus* Bate, 1881: 189; 1888: 317, pl. 51.

*Aristaeomorpha foliacea* (see Crosnier, 1978 for bibliography to 1978); Crosnier, 1984: 54, figs 23, 24; 1985: 861; 1989: 42; 1994b, 369; Hayashi, 1983b: 280, fig. 53; Grey et al., 1983: 46, pl. 1; de Freitas, 1985: 16, fig. 11-7; Liu & Zhong, 1986: 33, figs 12, 13; Yu & Chan, 1986; Kensley et al., 1987: 279; Dall, 2001: 412, fig. 2.

**MATERIAL.** Station 2, 3♀, 12, 28, 33mm; Station 3, ♂, 30mm; Station 27, ♂, 34mm, ♀, 37mm; Station 28, ♀, 30mm; Station 43, ♀, 37mm; Station 80, ♀, 17mm; Station 81, 2♂, 35mm, 4♀, 25-49mm; Station 86, 3 juveniles 10-14mm; Station 89, 3 juv. 7-12mm, 2♂, 23-26mm, 5♀, 25-46mm; Station 94, ♀, 19.5mm; Station 108, 5♂, 25-38mm, 10♀, 14-42mm; Station 140mm, ♀, 40mm; Station 159, 10♂, 23-27mm, 10♀, 25-43mm.

**REMARKS.** 66 specimens were collected over most of the area sampled, at depths of 110-987m, 177m deeper than the maximum recorded range. This species is one of the most widely distributed of the Aristeidae, ranging from the West Pacific, around Australia, the Indian and Atlantic Oceans and the Mediterranean Sea. The present records fill a gap between New Caledonia and Australia.

***Aristaeopsis edwardsiana* (Johnson, 1867)**

*Penaeus Edwardsianus* Johnson, 1867: 897 [part].

*Aristeus Edwardsianus* Miers, 1878: 308 [part].

*Aristeus caralinus* Bate, 1888: 32, fig. 10.

*Aristeus splendens* Richard, 1900: 89; 1903: 67, 70, 71.

*Aristaeopsis edwardsiana* Wood-Mason, 1891: 283, figs 8, 9; 1892: figs. 1-2; Alcock, 1899: 74.

*Aristaeopsis edwardsiana* Alcock & Anderson, 1894: 147; Pérez Farfante & Kensley, 1997: 175, pl.36, fig. 7; Dall, 2001: 413, fig. 3.

*Plesiopenaeus edwardsianus* Faxon, 1895: 189 (for full synonymy to 1974 see Crosnier, 1978); Kensley et al., 1987: 281; Hayashi, 1983c: 268, fig.59; Crosnier, 1985: 863; 1994b: 369; de Freitas, 1985: 20, figs 2-9; Liu & Zhong, 1986: 43, fig. 17; Grey et al., 1983: 38, pl. 2.

**MATERIAL.** Station 67, ♀, 92mm; Station 94, ♀, 19.5mm; Station 95, ♀, 29mm.

**REMARKS.** This species appears regularly in deepwater trawls off eastern Australia, and is of minor commercial importance off Madagascar (Crosnier, 1978). As the recorded depth range is 200-1850m, Station 67 at 72-82m is exceptional. The species prefers muddy substrates (Dall, 2001), which may explain its sparseness in the present collections. It is cosmopolitan.

***Aristeus mabahissae* Ramadan, 1938**

*Aristeus mabahissae* Ramadan, 1938: 43, figs 2b, 3b, 4a-c; Crosnier, 1978: 65, figs 25c, 26c-f; 1985: 863; 1994: 369; Hayashi, 1983a: 190, figs 49, 50; Liu & Zhong, 1986: 44, fig. 18; Komai, 1993: 22; Dall, 2001: 415, fig. 4A.

**MATERIAL.** Station 3, ♀, 43mm; Station 16, 2♂, 34mm, ♀, 47mm; Station 33, ♂, 35mm, 3♀, 51mm; Station 63, 2♀, 36, 41mm; Station 73, 3♂, 25, 32, 35; Station 74, 5♀, 48-53mm; Station 80, 6♂, 16-31mm, 10♀, 23-45mm; Station 81, ♂, 24mm, 19♀, 18-40mm; Station 90, 3♂, 32-54mm, 3♀, 40-51mm; Station 92, ♂, 32mm, 3♀, 44-51mm; Station 93, 2♀ 39-41mm; Station 94, 9 juv. 9-12mm; Station 95, ♂, 27, 6♀, 40-51mm; Station 96, ♂, 31mm, 6♀, 33-50mm; Station 101, 6♀, 41-62mm; Station 103, 5♀, 35-62mm; Station 114m, 2♂, 30, 31mm, 6♀, 25-70mm; Station 119, 2♂, 19-34mm; 6♀, 20-49mm; Station 123, 5♂, 26-43mm, 9♀, 19-48mm; Station 128, 8♀, 37-52mm; Station 140, 4♀, 11-41mm; Station 141, 2♀, 22, 23mm; Station 146, ♂, 33mm, 7♀, 39-52mm; Station 147, 5♂, 16-32mm, 4♀, 28-45mm; Station 151, 4♀, 35-47mm; Station 155, 3♂, 30-31mm, 5♀, 41-50mm; Station 156, 4♀, 43-51mm; Station 159, 15♀, 18-45mm; Station 160, 2♀, 46, 53mm; Station 166, ♀, 8.5mm.

**REMARKS.** Although the largest collection of penaeoids on this Cruise, this species is sparse in the northern part of the Cruise area, more frequent on the Lord Howe Rise, and most numerous on the West Norfolk Ridge. It was trawled at depths between 800-1460m, thus exceeding the known depth range (500-1100m) at seven stations. *A. mabahissae* has been recorded from the Australian east and west coasts, Madagascar, Maldives Islands, Indonesia, South China Sea, Japan, Wallis Islands (Dall, 2001).

Doubts have been raised about the identity of this species by A. Crosnier (pers. comm.). The glabrous species of *Aristeus* are closely similar, difficult to separate and prior to Crosnier (1978), depended on relative lengths of pereopod segments for separation. Crosnier (1978, 1984, 1994b) showed that the number of photophores on the pereopods, particularly the fifth, are constant within a narrow range for each species. Unfortunately, the photophores cannot be seen in old or poorly preserved specimens, i.e. the types of *A. semidentus*, *A. antennatus* and *A. mabahissae*.

Much depends on the identifications made by Crosnier (1978). He compared his material with the types of *A. semidentatus* and *A. mabahissae* in the Natural History Museum, London and considered that they matched closely. Unfortunately, he had only four specimens of *A. semidentatus*, but from the data he provided (Crosnier, 1978) they appear to be very consistent. Recently Crosnier (unpubl.) searched, without success, for this species around the locality where the type specimens were found (Kermadec Islands). This search included the vicinity of New Caledonia, Vanuatu and Solomon Islands, as well as material from the NORFANZ Cruise. The latter had most *A. mabahissae* features of the pereopods (numbers of photophores and ratios of length of carpus/length of merus) with the exception of the carpus/merus ratio of the fifth pereopods, which was within the *A. semidentatus* range for the NORFANZ and New Caledonia material.

A further sample of 28 specimens, mostly female, 20-60 mm carapace length, from the NORFANZ collection show a range of photophores 7-12, mean 10.5, on the carpus of the fifth pereopod, and 8-12, mean 10.3, on the propodus, consistent with those *A. mabahissae* from various localities examined by Crosnier (unpubl.) and by Dall (2001) for Australian specimens. However, the carpus length/merus length ratio of the fifth pereopods ranged 1.03-1.43 suggesting that this ratio is not a reliable feature by itself for separating *A. mabahissae* from *A. semidentatus*.

#### *Aristeus virilis* (Bate, 1881)

- Hemipenaeus virilis*, Bate, 1881:187; 1888:303, pl. 44, fig.4.  
*Aristeus tomentosus*, Bate, 1881: 189; 1888: 307, pl. 49, figs 2,3, pl. 50.  
*Hemipenaeus virilis*, Bate, 1888: 303, pl. 44, fig. 4.  
*Aristaeus virilis*, Faxon, 1895: 196; Alcock, 1901: 30; Kubo, 1949: 194, figs 1, 6, 8, 13, 14,19, 23, 36, 44, 65, 69, 72, 78, 85, 86.  
*Aristeus virilis*, Bouvier, 1908: 70; de Man, 1911: 6, 27; de Man, 1913: pl. 2, fig. 6; Ramadan, 1938: 39; Okada et al., 1966: 140, 141, 151, pl. 1, fig.3; Crosnier, 1978: 61, figs 25a,b, 26a,b; 1984: 21; 1985: 861; 1989: 42; 1994a: 352; Hayashi, 1983a: 190, figs 51, 52c,d; de Freitas, 1985: 3, fig. 11-1; Liu & Zhong, 1986: 37, fig. 14; Yu & Chan, 1986; Kensley et al., 1987: 281; Dall, 2001: 416, fig. 4B.

MATERIAL. Station 43, ♀, 17mm (damaged).

REMARKS. Recorded as the commonest of Australian penaeoids (Dall, 2001), but apparently rare in the NORFANZ area. Known range: South Africa, Madagascar, Andaman Islands, Indonesia, around Australia, New

Caledonia, New Hebrides, Wallis Islands, South China Sea, Philippines, Japan.

#### *Austropenaeus nitidus* (Barnard, 1947)

- Plesiopenaeus nitidus* Barnard, 1947: 383; 1950: 622; Crosnier, 1978: 89; Kikuchi & Nemoto, 1986: 52.  
*Austropenaeus nitidus* Dall, 2001: 417, fig. 5.

MATERIAL. Station 47, 9♀, 31-39mm; Station 66, ♀, 17mm; Station 72, 2♂, 25,26mm, 20♀, 33-39mm; Station 73, 5♂; Station 77, ♀, 33mm; Station 90, 2♂, 21, 24mm, 6♀, 29-34mm; Station 91, 2♂, 21, 23mm, ♀, 30mm, 4 juveniles; Station 92, 4♀, 28-37mm; Station 92, ♂ 22mm, 5♀, 28-37mm; Station 101, 4♀, 33-39mm; Station 103, 5♀, 29-42mm; Station 121, ♂, 26mm, ♀, 23mm; Station 142, 3♀, 26-38mm; Station 145, ♀, 16mm; Station 146, 8♂, 18-23mm, 11♀, 15-25mm; Station 150, ♂, 22mm; Station 151, 2 juveniles; Station 155, ♂, 22mm; Station 156, 6♂, 24-26mm, 11♀, 18-38mm; Station 158, 6 juveniles 10-18mm; Station 160, 2♂, 18-27mm, 4♀, 23-27mm; Station 163, 2♀, 17-21mm.

REMARKS. This is the largest collection of this species so far recorded. Depth range was 565 – 1530m, all but one station below 1000m; seven of these exceeded the maximum published depth of 1300m. The geographical range falls well within the limits of 26°S to approx. 40°S (Dall, 2001), who disputes its reported occurrence in the North Pacific at 22° N (Kikuchi & Nemoto, 1986). Otherwise *Austropenaeus nitidus* appears to be a Southern Hemisphere species ranging from the south Atlantic Ocean, off Cape of Good Hope and Natal, Amsterdam and St. Paul Islands, south Indian Ocean, south and east Australia, Lord Howe Rise and Norfolk Ridge. It is likely to occur around the North Island of New Zealand and to the east, depending on bottom topography.

#### *Hepomadus tener* Smith, 1884

- Hepomadus tener* Smith, 1884:409, pl. 9, figs 7,8; 1887; Bouvier, 1908:57, pl.1, fig.5, pl.13, figs 1-12; Burkenroad, 1936: 86; Ramadan, 1938:55; Roberts & Pequegnat, 1970, 43, fig.3; Pequegnat & Roberts, 1971:9; Pérez Farfante, 1973: 442, figs 1-8; Crosnier, 1985: 860; 1994: 369; Dall, 2001: 419, fig. 7.  
*Hepomadus tener?* Wood-Mason, 1891: 189.  
*Aristaeus (Hepomadus) tener?* Alcock, 1901: 42.  
*Hepomadus glacialis* Milne Edwards & Bouvier, 1909: 194, figs 13-19, pl.1, fig.3.

MATERIAL. Station 47, ♂, 41mm, ♀, 49mm

REMARKS. Collected at 1530-1934m; as the depth range is 765-5400m (Dall, 2001), a large part of its habitat may not have been reached on this Cruise. It nowhere appears to be common. Its known range is Zanzibar, Madagascar, Réunion, Bay of Bengal, NW Australia, Wallis Islands, W. and E. Atlantic Ocean.

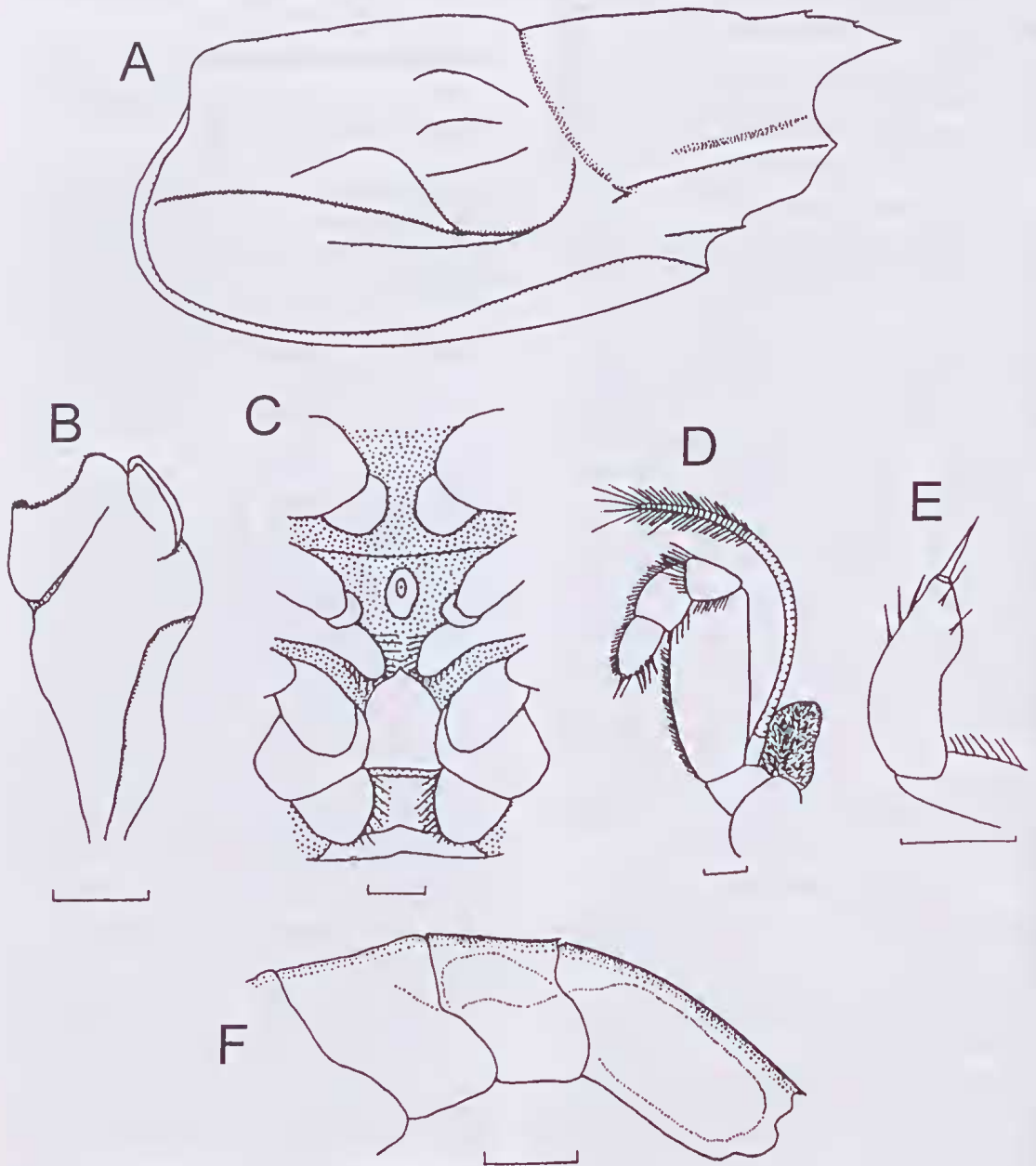


FIG. 1. *Benthescymus howensis* Dall, 2001. ♀ holotype, 22 mm, AM P40648, Lord Howe rise, 28°44'S, 161°54'E, 1325m. A, carapace; C, thelycum; D, maxilliped 2; E, maxilliped 3, dactyl; NORFANZ Cruise, Stn. 74, 32°26'S, 161°45'E, 1171-1259m. B, ♂, 24 mm, right half petasma, anterior view; NORFANZ Cruise, Stn. 160, 34°59', 169°30', 1735m. F, ♀, 21mm, abdominal somites 4-6. Scale bars = 1mm, except F = 5mm. A, C, D, E, are from Dall, 2001.

Family BENTHESICYMIDAE Wood-Mason,  
1891

*Benthescymina* Wood-Mason, 1891: 286.

*Benthescymae* Bouvier, 1908, 33: 16; Burkenroad, 1936: 15; Anderson & Lindner, 1943: 290; Balss, 1957: 1517; Tirmizi, 1960: 321; Roberts & Pequegnal, 1970: 32.

*Benthescyminae* Crosnier, 1978:14; Hayashi, 1983d: 36.

*Benthescymidae* Pérez Farfante & Kensley, 1987: 56.

For diagnoses and keys see Pérez Farfante & Kensley, 1997 and Dall, 2001.

***Benthescymus investigatoris* Alcock &  
Anderson, 1899**

*Benthescymus investigatoris* Alcock & Anderson, 1899a: 282; 1899b, pl.41, fig.2; Alcock 1901: 44; Rathbun, 1906: 906; Balss, 1927: 247, fig.1; Burkenroad, 1936: 49; Anderson & Lindner, 1943: 298; Crosnier, 1978: 21, pls 7c,d, 8c,d, 9, 10; 1984: 20; 1985: 857; 1989: 41; 1994a: 351; 1994b: 368; Itayashi, 1983d: 440, fig. 61; Kikuchi & Nemoto, 1991: 88, figs 16,17; Dall, 2001: 427, fig. 12.

*Benthescymus investigatori*, Borradaile, 1910: 258.

*Benthescymus Investigatoris*, de Man, 1911:5,14; 1913, pl. 1, fig. 1.

MATERIAL. Station 47, 2♀ 19mm, 1 juvenile, 7mm; Station 78, 7 juveniles 13-17mm; Station 80, ♂, 14mm; Station 93, juvenile 7mm; Station 94, 40 small juveniles; Station 96, 2♂, 21mm, 5F (damaged, approx.22mm); Station 101, 5♀ 17-28mm; Station 114, 2♂, 18-21mm, 2♀ 18-20mm; Station 120, juvenile 6mm; Station 123, 3♀ 17-21mm; Station 129, ♀ 22mm; Station 146, 2♂, 17-19, 6♀ 19-23mm; Station 151, ♂, 17mm; Station 155, 2♀ 21, 22mm; Station 156, 2♂, 19mm, 3♀ 21-23mm; Station 163, ♀ 18mm; Station 167, 4♂, 25mm, 9♀ 18-21mm+10 damaged.

REMARKS. This is one of the commonest *Benthescymus* species, one trawl off NE Queensland yielding 150 specimens (Dall, 2001). It has been recorded throughout the Indo-West Pacific from the east coast of Africa, through the Indian Ocean to Hawaii and the Wallis Islands, including the NW and E coasts of Australia, Lord Howe Rise, Norfolk Ridge, Indonesia, Philippines, Japan.

***Benthescymus howensis* Dall, 2001  
(Fig. 1)**

*Benthescymus urinator howensis* Dall, 2001: 428, fig. 13.

MATERIAL. Station 71, 2♀ 23, 28mm; Station 74, 4♂ 21-25mm, 4♀ 18-23mm; Station 103, 3♂ 15-24mm, 4♀ 23-25mm; Station 120, 2♂ 25-29mm, ♀ 28mm; Station 121, 3♂ 11♀ all damaged; Station 160, ♂, 19mm, 4♀ 20-23mm; Station 163, ♂ 26mm; Station 168, ♂ 24mm.

DIAGNOSIS. Integument soft and thin, carapace often damaged; rostrum reaching the eye, with two fairly prominent dorsal teeth, sometimes with third small tooth or indications thereof; posterior tooth behind margin of

carapace. Antennal and hepatic spines present; branchiostegal spine prominent, situated on margin of carapace with short earina. Cervical sulcus deep, notching mid-dorsum and with lower branch continuous with branchiocardia sulcus; branchiocardia carina prominent; postcervical sulcus obscure, marginal carina well developed. Abdomen without postero-median spine on somite 4; without distinct spine on somite 5 in about half of specimens, the remaining half with small spine; somites 5 and 6 dorsally carinate; sixth somite more than twice length of fifth; a complex of feeble lateral carinae and sulci on somites 5 and 6 (Fig. 1F). Merus of second maxilliped expanded, length/width ratio 2.4 (Fig. 1D); dactyl of third maxilliped broadest below its mid-point, tapering distally with one spine at the tip (Fig. 1E). Petasma leaf-like, with short dorsomedian lobule occupying about one third total length of the petasma, distally bluntly pointed, with small rounded projection on the lateral corner; ventrolateral lobule at right angles to the ventromedian lobule, with its lateral margin slightly thickened (Fig. 1B). Telyeum with prominent swelling on the sternite of 5th pereopods, anterior end bluntly pointed; small pointed projection on the 4th sternite (Fig. 1C).

REMARKS. Dall (2001) did not feel justified in erecting a new species on the basis of two females, one of which was damaged, and instead erected the sub-species *B. urinator howensis*. The NORFANZ Cruise specimens (41 including 18 males) have shown that the erection of a species is justified. *B. howensis* is closely related to *B. urinator* Burkenroad, 1936, the principal taxonomic differences being in the lack of a well-defined carina and postero-median spine on abdominal somite 4. Also, the dorsomedian lobule of the petasma, which bears the cineinuli, is barely one third of the total length of the petasma, whereas in *B. urinator* it is about half the length. A further difference may be in the preferred habitat depth, *B. urinator* so far being collected from depths ranging from 2560-4180m (mean 3558m) compared with 1287-1975m (mean 1483m) for *B. howensis*. While only 13 specimens of *B. urinator* have been collected so far, they have been from a wide range of locations in the Indo-West Pacific: southern Indian Ocean, off the approaches to Torres Strait, northwest Pacific and off Kauai Island, Hawaii (Kikuchi & Nemoto, 1991). *Benthescymus howensis* has so far been collected only from the Lord Howe Rise (type locality) and adjacent West Norfolk Ridge.

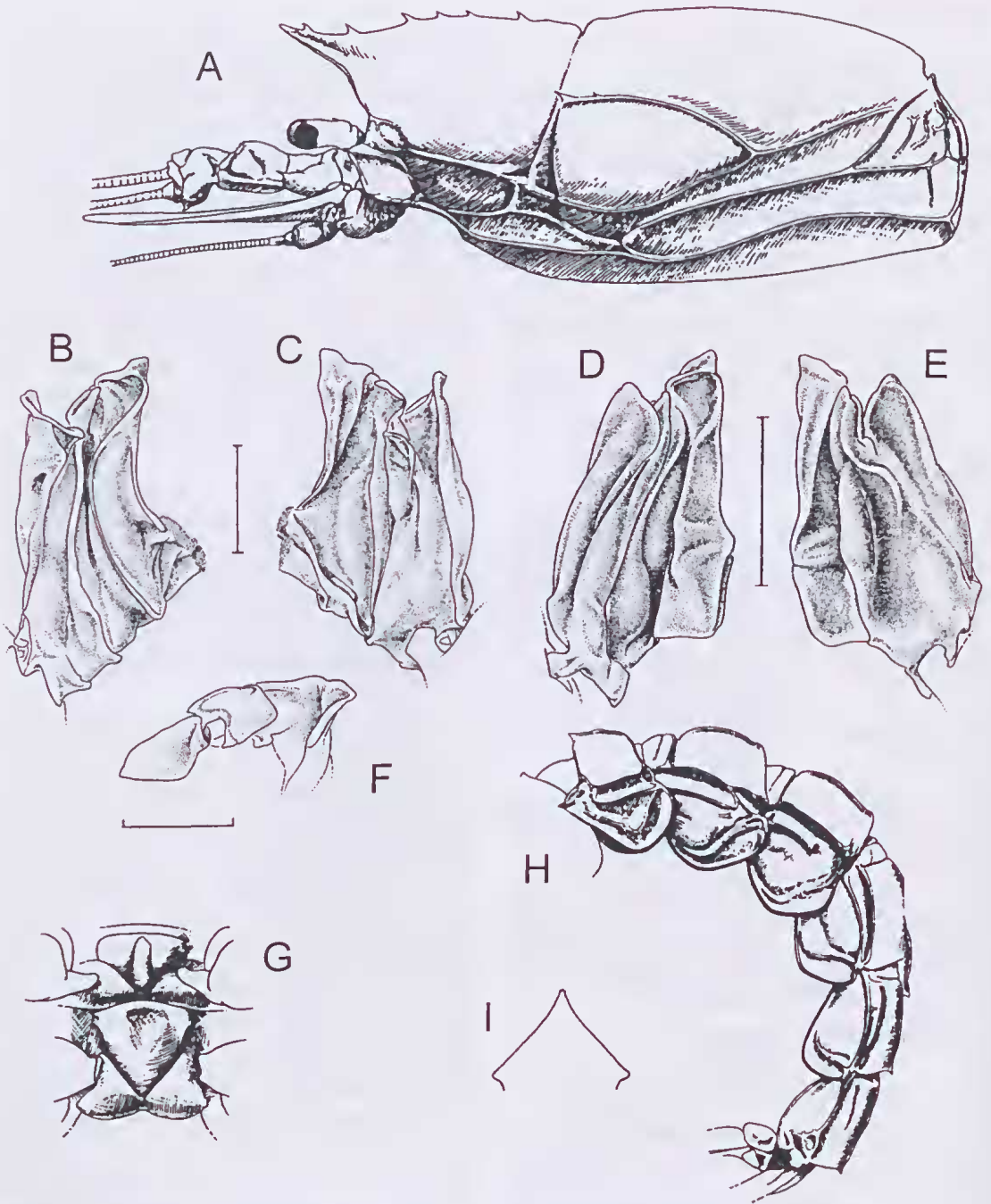


FIG. 2. *Gordonella kensleyi* Crosnier, 1988. ♀ holotype, 53.5 mm, A, anterior half of body, G, thelyeum, H, abdomen, I, transverse section of dorsal part of somite 3; B, C, F NORFANZ Cruise, Stn. 103, 33°46'S, 167°29'E, 1430-1460 m, ♂, 53 mm, left half petasma, B, anterior face, C, posterior face, F, upper part viewed from above; D, E, Cruise Halipro, Stn. Bt 82, 23°56'S, 168°28'E, 1846-1869 m, ♂ 47.6 mm, left half of petasma, D, anterior face, E, posterior face. Scale = 5mm. A, G, H, I are reproduced from Crosnier, 1988, with the authorization of © Publications Scientifique du Muséum national d'Histoire naturelle, Paris. B-E are original, executed by J. G. Dejouannet of the Muséum national d'Histoire naturelle, Paris.

**Gennadas gilchristi** Calman, 1925

*Gennadas gilchristi* Calman, 1925: 6, pl.1, figs 3, 4; Burkenroad, 1936: 36, fig. 58; Barnard, 1950: 633, 118g, h; Kensley, 1968: 301; 1971: 280, fig. 6; Griffith & Brandt, 1983: 179; Kensley et al., 1987: 277; Iwasaki & Nemoto, 1987; Dall, 2001: 431, fig. 16.

**MATERIAL.** (All under 9mm); Station 82, ♂; Station 89, ♂; Station 120 ♂; Station 129, ♂; Station 140, ♂; Station 142, ♂, ♀; Station 151, 3 ♀; Station 158, 2 ♂; Station 163, 2 ♀; Station 164, 2 ♂, ♀; Station 166, ♂, 2 ♀

**REMARKS.** This is a mesopelagic species with a preferred depth range of 200-700m; it is the commonest *Gennadas* species in southeastern and southern Australian seas. Recorded range: off Cape Peninsula and west coast of S. Africa, Argulhas Basin, S. Indian Ocean, S. and SE Australia (33°-45°S), Norfolk Ridge.

**Gennadas kempfi** Stebbing, 1914

*Gennadas kempfi* Stebbing, 1914: 283, pl. 27; Calman, 1925:4; Burkenroad, 1936: 68, figs 52, 54; Barnard, 1950: 630, figs 118a-d; Kensley, 1971: 285, fig. 8; Kensley, et al., 1987: 278; Iwasaki & Nemoto: 1987, 38; Dall, 2001: 432, fig. 18.

**MATERIAL.** Station 163, ♀.

**REMARKS.** The sole NORFANZ record is almost at the known northern limit (32°S) of this species. It is unique in that it is an Antarctic species, recorded down to 62°27'S, between 115° - 150°E (Iwasaki & Nemoto, 1987).

Known range: SE Indian Ocean, S and SE Australia, Antarctic Ocean, New Caledonia basin, SE Atlantic Ocean, 0-3400m; probably a mesopelagic species.

Family SOLENOCERIDAE Wood-Mason  
1891

*Solenocera* Wood-Mason, 1891: 275.

*Solenocerinae* Burkenroad, 1934b: 63; Ramadan, 1938: 56; Crosnier, 1978: 14, 96, 1985: 31; 1988: 563; 1989, 379.

*Solenoceridae* Pérez Farfante, 1978: 2, 1988: iv, 26; Grey et al. 1983: 14; De Freitas, 1985: 28; Pérez Farfante & Kensley, 1997: 157; Dall, 1999: 555.

For diagnosis and keys see Pérez Farfante & Kensley, 1997 and Dall, 1999.

**Gordonella kensleyi** Crosnier, 1988  
(Fig. 2)

*Gordonella kensleyi* Crosnier, 1988:597, figs 2c, 12b, 15h,i, 16g.

*Haliporus villosus* Kensley, 1968.

**MATERIAL:** Station 47, 2♂ 46, 50mm, ♀ 65mm (damaged); Station 71, 2♂ 44, 51mm, 3♀ 55-69mm; Station 73, 2♂ 22, 42mm, ♀ 22mm; Station 101, 3♀ 58, 68, 68mm (damaged); Station 103, 2♂ 49, 53mm, 2♀ 47, 59mm; Station 168, one, badly damaged.

**DIAGNOSIS:** Integument glabrous, soft, flexible; cephalothorax bulbous with relatively slender abdomen and long pleopods. Rostrum acute, slender, reaching about middle of second segment of antennular peduncle, with two or three dorsal teeth; four or five postrostral teeth, with indications of additional posterior tooth.

Carapace with post-orbital, antennal, pterygostomial, hepatic and supra-hepatic spines; post-orbital, antennal, hepatic, branchiostegal and accessory carinae present (Fig. 2A). Abdomen with prominent lateral carinae; dorso-median spines on third, fourth and fifth somites; dorsum of third somite acutely pointed (Fig. 2H, I). Petasma (Fig. 2B, F) has cincinuli for about lower one third of inner margin; extremity of ventro-median lobule slightly thickened and bluntly pointed; dorso-lateral lobule poorly defined and ventro-lateral lobule slightly hollowed with blunt angular tip. Thelycum (Fig. 2G) with triangular plate on fifth sternum, apex directed posteriorly, anterior edge slightly convex; fourth sternal plate of similar shape, but smaller with longitudinal, median swelling.

**REMARKS.** At present there are only three species within this genus: *G. villosa*, *G. paravillosa* and *G. kensleyi*. The first is known only from the type, which is in very poor condition. *G. paravillosa* has been collected off northeast Australia and Indonesia, whereas *G. kensleyi* has been found off South Africa and New Caledonia, as well as the NORFANZ locations of Lord Howe Rise and West Norfolk Ridge. This the first time that males of this species have been collected. The depth range for NORFANZ material was 1132-1934m compared with recorded depths of 1510-2798m.

**Hadropeneus lucasii** (Bate, 1881)

*Solenocera lucasii* Bate, 1881: 185.

*Philonicus lucasii* Bate, 1888: 62.

*Pleoticus lucasii* Bate, 1888: 227, pl. 42, fig. 4.

*Haliporus Lucasii* Bouvier, 1908: 80.

*Haliporus lucasii* de Man, 1911: 7, 41 43.

*Hymenopenaeus lucasii*, Burkenroad, 1936; Anderson & Lindner, 1945: 289; Kubo, 1949: 213, figs 8B, 20Q, 27K-N, 66O.P, 72C.I, 80H, 91, 92A-C.

*Hymenopenaeus lucasii* Crosnier & Foresti, 1973: 260; Crosnier, 1978: 115, figs 37f-h, 39c, 43a, 44.

*Hadropeneus lucasii* Crosnier, 1989: 44; 1994b: 369; Kensley et al., 1987: 17.

*Hadropeneus lucasii* Pérez Farfante, 1977; Hayashi, 1984b: 445, fig. 78; Dall, 1999: 560, fig. 5.

**MATERIAL.** Station 106, ♂ 13mm, 2♀ 16, 18mm; Station 107, 8♀ 15-21.5mm; Station 108, ♂ 20mm; Station 132, 2♂ 10, 13.5mm

REMARKS. All specimens were collected on the West Norfolk Ridge at depths of 121-698m, extending the known depth range; distribution is from Mozambique to Indonesia, NW and E Australia, Wallis Islands, Japan and Hawaii.

**Haliporoides sibogae** (de Man, 1907)

*Haliporus sibogae* de Man, 1907: 38; 1911: 7, 38; 1913: pl. 3, fig. 10a-b, pl. 4, fig. 10c-q.

*Haliporoides sibogae* Pérez Farfante, 1977: 290; Crosnier, 1984; 1989: 44; 1994; Grey et al., 1983: 15; Hayashi, 1984b: 445; Yu & Chan, 1986; Dall, 1999: 562, fig. 6B.

*Haliporoides sibogae australiensis* Kensley et al., 1987: 562. *Hymenopenaeus sibogae* Crosnier, 1978: 104, figs 36a, 38d; 1985: 23.

*Parahaliporus sibogae* Kubo, 1949: 208, figs 10, 8C, 9A, 14D, 23I, 36A-D, 44E, 66Q,R, 68O, 72E,K, 81D, 90.

MATERIAL. Station 6, ♂ 30mm; Station 64, 2♂ 34, 35mm; 3♀ 35-45mm; Station 81, 3♂ 21, 22, 36mm; 2♀ (damaged); Station 82, 2 juveniles; Station 83, 2♂ 33, 35mm; ♀ 30mm; Station 89, 8♂ 22-33mm; 3♀ 43-47mm; Station 108, 2♀ 43-47mm; Station 125, ♀ 38mm.

REMARKS: Nearly all were collected on the Norfolk Rise and West Norfolk Ridge at depths between 542-780m. Range: Madagascar to Indonesia, NW and E Australia, South China Sea, Japan and New Zealand at depths between 100-900m. Has been fished commercially off the New South Wales coast.

**Hymenopenaeus methalli** Crosnier & Dall, 2004

*Hymenopenaeus methalli* Crosnier & Dall, 2004: 17.

MATERIAL. Station 43, ♂ 17mm; 2♀ 16-21mm; 9 juveniles, damaged; Station 80, 2♀ 20mm; Station 102, 3♂ 12, 20, 20mm; Station 108, 2♂ 20mm; Station 147, 2♀ 20, 25mm.

REMARKS. Station at 26°25.94'S was at the northern limit of the Cruise; the remainder were either on the Lord Howe Rise or West Norfolk Ridge, depth 750-1478m., but the sole record at 1478m is exceptional, with 930m the maximum recorded elsewhere. The type locality is NW of New Caledonia, 19°42.40'S, 158°50.80'E. and it has been collected around New Caledonia, Vanuatau, Chesterfield and Tonga Islands, at 650-930m.

**Hymenopenaeus neptunus** (Bate, 1881)

*Haliporus neptunus* Bate, 1881, 1888; de Man, 1911.

*Hymenopenaeus neptunus* Crosnier & Forest, 1973: 128; Crosnier, 1984: 24; 1989: 49, 51; 1994a: 353; 1994b: 370; Dall, 1999: 567, fig. 8C.

MATERIAL. Station 73, ♂ 17mm; ♀ (no carapace, similar size to male); Station 101, ♀ 16mm; Station 114, 2♂ 20, 21mm; 2♀ 21, 25mm.

REMARKS. The above stations were either on the southern part of the Lord Howe Rise or the West Norfolk Ridge at depths from 1132m to 1470m. This species has been collected from the Indian Ocean to Indonesia, the Philippines, NE Australia, Wallis Islands, depth range 700-1500m, most below 1000m.

**Hymenopenaeus obliquirostris** (Bate, 1881)

*Haliporus obliquirostris* Bate, 1881: 186; 1888: 286, pl. 41, fig. 2.

*Hymenopenaeus obliquirostris* Crosnier & Forest, 1973: 264, fig. 87c; Crosnier 1989: 49, figs 2c, 4a,b; Pérez Farfante & Kensley, 1997: 173; Lee et al., 2001: 58, figs 2G-K, 3K,L, pl. 1D; Crosnier & Dall, 2004: 3, figs 3-5.

MATERIAL. Station 73, 4♂ 18-21mm; 2♀ 20, 24mm; Station 114, 2♂ 22, 23mm; 3♀ 22, 24, 24mm; Station 121, 3♀ 22, 25, 25mm; Station 123, ♂ 21mm; 2♀ 21, 27mm; Station 142, ♀ 25mm; Station 146, 2♂ 18, 21mm; 2♀ 18-31mm; Station 160, ♂ 19mm.

REMARKS. This species was restricted to the southern part of the Lord Howe Rise and the West Norfolk Ridge, at depths between 969 and 1345m. Until recently the only record of this species was off the Kermadec Islands by the HMS Challenger (Bate, 1881). It was recorded around Taiwan by Lee et al. (2001) and in the waters around New Caledonia, as well as the present locality, by Crosnier & Dall (2004). The depth range is 632-1345m.

**Solenocera comata** Stebbing, 1915

*Solenocera comatum* Stebbing, 1915: 67, pls 13,14; Barnard, 1950: 617, figs 113k, 114; Kensley, 1972: 18, fig. 7c-e; 1974: 70.

*Solenocera comatus* Burkenroad, 1934: 71; 1939: 6; Anderson & Lindner, 1945: 287.

*Solenocera brevipes* Kubo, 1949: 246, figs 1S, 8X, 20N, 27F-H, 45D, 66LJ, 72Q,W, 80A, 98II-J, 99, 100.

*Solenocera comata* Crosnier, 1978: 139, figs 48b, 49b, 50d, 51b-e, 52b; 1984: 869; 1985: 869; 1994: 355; Hayashi, 1984a: 358; Dall, 1999: 577, fig. 16.

MATERIAL. Station 20, 6 juveniles; Station 106, ♂ 14mm, ♀ 15mm.

REMARKS. The absence of *Solenocera* species from most of the collections on this cruise may have been due to two factors: first, most of the trawls were at depths greater than 700m, whereas most *Solenocera* species recorded in the southwest Pacific prefer depths up to 500m; second, they are inhabitants of soft, silty bottoms, which are lacking in the area covered by the Cruise. *S. comata* was collected on the Norfolk Ridge at depths of 126-227m. The known range is the western Indian Ocean, Indonesia, Timor Sea, Philippines, Japan, at 90-460m.



## Family SICYONIIDAE Ortmann, 1898

*Eusicyoninae* Ortmann, 1898: 1121; Balss, 1957: 1520.

*Eusicyoninae* Burkenroad, 1934: 116.

*Sicyoniidae* Grey et al., 1983: 13, 31.

*Sicyoniidae* Pérez Farfante & Kensley, 1997: 152; Crosnier, 2003: 201.

*Sicyonia inflexa* (Kubo, 1949)

*Eusicyonia inflexa* Kubo, 1949: 458, figs. 80, 48D, 77C.I, 79G, 159, 160A-F.

*Sicyonia inflexa* Starobogatov 1972: 410, pl.11, fig.148b-c; Miyake, 1982: 173; Hayashi, 1985a: 142; 1985b: 196, figs 88c, 89c, 91d; 1986: 81, fig. 40; 1992: 151, figs 83c, 84c, 86d; Crosnier 2003: 267.

*Sicyonomia inflexa* Crosnier, 1985a: 46.

*Eusyconia longicauda* Stebbing 1914; Barnard, 1950.

*Sicyonia longicauda* Kensley, 1972:24; 1977:15; 1981,20; de Freitas 1984a:29.

MATERIAL. Station 6, ♀ 10mm; Station 55, ♀ (newly moulted); Station 82, ♂, 2♀; Station 94, ♀ damaged; Station 107, 3♀; Station 126, ♀; Station 150, ♀; Station 154, 5♂, 31 ♀.

REMARKS. Collected on the Norfolk Ridge, the Lord Howe Rise and the West Norfolk Ridge, 292-1150m. Extensively collected from South Africa, Mozambique, Madagascar, Indonesia, N.W. Australia, around New Caledonia, Chesterfield Islands, Tonga, Fiji, Philippines, Taiwan and the South China Sea and Japan, 260-936m.

*Sicyonia truncata* (Kubo, 1949)

*Eusicyonia truncata* Kubo, 1949.

*Sicyonia truncata* Starobogatov, 1972: 412; Kensley, 1972: 24; 1981: 20; de Freitas 1984a: 29; 1984b: 3; Hayashi 1985a: 29; 1985c:261; 1992: 152, 162; Burukovsky, 1991: 36; 1992: 495; Takeda & Hanamura, 1994: 11; Crosnier 2003: 238.

*Sicyonia laevis* Rathbun, 1906.

*Sicyonia longicauda* Rathbun, 1906 (in part).

MATERIAL. Station 20, 10 juveniles, 4-8mm.

REMARKS. Near Norfolk Island, 322-327m. Recorded from South Africa, Madagascar, Indonesia, N.W. Australia, New Caledonia, Chesterfield Islands, Vanuatu; Fiji, Tonga, Hawaii, Japan, 110-510m depth.

## Family PENAEIDAE Rafinesque-Schmaltz, 1815

*Penedia* Rafinesque-Schmaltz, 1815

*Penaeidae* Dana, 1852a, b; Boas, 1880; Bate 1881, 1888; Ortmann, 1898; Alcock, 1901; Bouvier, 1908; de Man, 1911; Barnard, 1950; Balss, 1957; Pérez Farfante, 1978; Williams, 1984; de Freitas, 1987; Pérez Farfante, 1988; Dall et al., 1990; Pérez Farfante & Kensley, 1997.

*Penaeinae* Ortmann, 1898; Bouvier, 1908; Burkenroad, 1934b; Balss, 1957.

*Parapenaeinae* Ortmann, 1898.

*Funchaliae* Bouvier, 1908; Balss, 1957.

*Haliporae* Bouvier, 1908; Balss, 1957.

*Funchaliinae* Burukovsky & Romensky, 1991.

REMARKS. The Penaeidae is the best known and most numerous of the five families of the Penaeoidea, but two factors may have contributed to the paucity of species of this family on the NORFANZ Cruise: 1) the majority of penaeids inhabit coastal waters less than about 200m depth and most of the NORFANZ collections were made in depths greater than this; 2) seamounts and ridges lack the extensive soft sands and muds characteristic of inshore areas, which are the preferred benthic environment of the most abundant penaeids.

*Funchalia villosa* (Bouvier, 1905)

*Hemipenaeopsis villosa* Bouvier, 1905 (part).

*Grimalki richardi* Bouvier, 1905 (part).

*Funchalia woodwardi* Bouvier, 1908 (part); Lens & Strunck, 1914.

*Funchalia vanhaffeni* Lenz & Strunck, 1914:303.

?*Funchalia* Gurney, 1924.

*Funchalia villosa* Burkenroad, 1936:129; Dall, 1957:163; Crosnier & Forest, 1973:19; Grippa, 1976:80; Kensley, 1977:17; Griffiths & Brandt, 1983:177; Crosnier, 1985:869; Kensley et al., 1987:281; Burukovsky & Romensky, 1991:31.

MATERIAL. Station 71, 2♂ 15, 16mm; ♀ 18mm.

REMARKS. This is a pelagic species (Kensley et al., 1987) but was collected in a "ratecatcher" trawl at 1920-1934m, so presumably was caught when the trawl was being recovered. *Funchalia villosa* has a world-wide, though scattered, distribution. Dall (1957) reported that the Lord Howe Island collection was at that time the first authentic record for the Southern Hemisphere, but Griffiths & Brandt (1983) found that it was commonly associated with warm water eddies in the surface waters down to about 200m.

*Metapenaeopsis velutina* (Dana, 1852)

*Penaeus velutinus* Dana, 1852: 604; 1885:pl. 11, fig. 4; Bate, 1881: 175 (part).

*Metapenaeus velutinus* Rathbun, 1906:903.

*Metapenaeopsis velutina* Starobogatov, 1972: 406, 409; Burukovsky, 1974: 36(key); 1983: 49; Crosnier, 1991: 247.

*Metapenaeopsis insana* Racek & Dall, 1965:41; Starobogatov, 1972: 406, 408; Burukovsky, 1983: 50.

*Metapenaeopsis caliper* Liu & Zhong, 1988: 238, 269.

MATERIAL. Station 59, 20 juveniles, 8-11mm; Station 61, ♂ 12mm, ♀ 17mm, plus a large number of juveniles; Station 67, ♂ 8mm, 2♀ 9, 10mm.

REMARKS. All the *M. velutina* were collected in the vicinity of Middleton Reef and Lord Howe Island. Station 59 was recorded as being made with an ORH trawl at 1600m, whereas Stations

TABLE 1. List of Stations where Penaeoidea were Collected. \*Region: SNR = South Norfolk Ridge; NNR = North Norfolk Ridge; LHP = Lord Howe Plateau; WNR = West Norfolk Ridge. \*\*Gear code: 10 = ORH trawl. A deep water rough bottom wing trawl used in the Orange Roughy fishery with proven record for seamount fishing; 60mm cod-end option. 11 = Nicknamed "Rateatcher". A 40mm cod-end wing trawl designed for close bottom fishing for juvenile Orange Roughy on flat soft bottom. 13 = Beam trawl. French design with previous success for sampling invertebrate epifauna on similar voyages. 20 = NIWA sled. Used successfully for sampling seamounts on previous French cruises. 21 = Sherman epibenthic sled, 1.9 m x 2.2 m x 0.8 m high, with 25 mm cod-end mesh. 53 = Midwater

Station No.	*Region	Time	Latitude	Longitude	Depth range(m)	**Gear code
2	SNR	1615	34 09.37	171 27.79	544-584	10
3	"	1937	34 03.21	171 08.1	1051-1320	10
6	"	0206	34 09.14	171 27.95	542-554	21
8	"	0622	34 09.75	171 27.33	558-573	21
16	"	0959	29 59.62	167 38.73	1245-1285	10
20	"	1926	29 41.84	168 02.62	322-337	13
27	"	1907	28 54.47	167 41.04	110-441	10
28	"	2121	28 51.94	167 40.59	718-859	10
33	NNR	1853	28 29.37	167 47.15	1056-1116	10
43	"	1031	26 25.94	167 10.87	750-774	13
44	"	1250	26 23.53	167 01.21	1019-1030	10
47	"	0227	28 29.88	161 15.56	1530-1530	11
55	"	1237	29 13.12	159 00.45	292-330	20
59	"	1922	29 14.97	159 02.72	1600-1600	10
61	"	2133	31 49.11	159 20.74	86-89	21
63	"	0307	31 42.53	159 07.93	798-880	10
64	"	0518	31 40.55	159 09.43	587-700	10
66	"	1054	31 45.73	159 20.93	565-960	21
67	"	1316	35 35.83	169 33.43	72-82	21
71	"	0030	32 03.98	159 52.80	1920-1934	11
72	LHP	0740	32 11.59	160 51.66	1342-1361	11
73	"	1434	32 25.94	161 47.62	1132-1197	11
74	"	1906	32 26.08	161 45.36	1171-1259	10
77	"	0020	32 26.70	161 46.95	1130-1147	13
78	"	0455	32 39.33	162 33.11	864-870	13
80	"	0954	32 42.50	162 33.86	850-872	11
81	"	1916	34 01.95	162 35.96	780-818	11
82	"	0106	34 12.44	162 39.50	758-760	13
83	"	0320	34 11.83	162 37.10	761-765	10
86	"	0833	34 11.06	162 39.19	430-740	21
89	"	1349	34 12.18	162 41.18	748-772	11
90	"	1951	34 12.17	163 21.36	1090-1117	11
91	"	2217	34 12.41	163 17.20	1076-1083	13
92	"	0038	34 12.70	163 21.59	1080-1120	10
93	WNR	1854	33 49.47	167 03.45	804-944	10
94	"	2124	33 49.50	166 58.80	950-987	13
95	"	2326	33 49.24	167 03.35	805-938	11
96	"	0433	33 37.10	166 55.60	1017-1042	11
101	"	1922	33 45.20	167 28.30	1410-1470	10
102	"	2220	33 42.45	167 27.03	1451-1478	13
103	"	0055	33 46.55	167 29.28	1431-1460	11

TABLE 1. (continued).

Station No.	*Region	Time	Latitude	Longitude	Depth range(m)	**Gear code
106	"	1100	32 37.58	167 35.17	121-126	13
107	"	1405	32 36.49	167 43.98	699-707	13
108	"	1547	32 35.67	167 44.12	698-724	11
114	"	0641	32 35.22	167 47.66	1021-1052	11
119	"	1501	32 32.65	167 47.05	957-977	10
120	"	1747	32 36.57	167 50.33	1303-1313	10
121	"	2132	32 36.39	167 50.59	1331-1345	13
123	"	0249	32 36.23	167 47.09	926-969	11
125	SNR	1832	33 23.60	170 09.53	605-622	21
126	"	1931	33 23.41	171 11.58	469-526	21
128	"	2314	33 23.57	170 09.95	627-662	10
129	"	0450	33 29.24	170 00.71	1158-1230	10
132	"	1057	33 22.61	170 12.70	514-540	21
140	WNR	1403	34 19.14	168 24.63	831-846	10
141	"	1611	34 17.09	168 21.50	785-800	13
142	"	1903	34 16.49	168 24.08	1246-1249	10
145	"	2346	34 17.84	168 25.82	1251-1268	21
146	"	0306	34 14.43	168 21.18	1195-1202	11
147	"	0523	34 18.14	168 23.18	809-857	11
150	"	1346	34 34.99	168 55.54	1000-1150	21
151	"	1641	34 34.13	168 56.48	1013-1340	10
154	"	2232	34 37.20	168 57 03	521-539	13
155	"	0035	34 34.81	168 57.79	813-1000	11
156	"	0241	34 34.26	168 56.53	1013-1350	11
158	"	1055	35 10.27	169 29.24	867-869	13
159	"	1228	35 08.12	169 28.37	868-872	11
160	"	1735	34 58.85	169 29.60	1288-1294	11
163	"	2353	34 59.13	169 26.50	1278-1287	10
164	"	0409	35 15.70	169 38.25	771-772	10
166	"	0734	35 17.17	169 33.63	815-867	10
167	"	1200	35 35.83	169 33.43	1760-1789	11
168	"	1614	35 56.46	170 01.01	0-1975	53

61 and 67 were made with a Sherman dredge at 72-89m. The greatest depth recorded in the literature is 320m, so the 1600m for Station 57 is questionable. *M. velutina* has been recorded from the Seychelles, NW. and E. Australia, South China Sea, Philippines, New Caledonia, Hawaii, 55-320m.

#### SIGNIFICANCE OF THE NORFANZ PENAEOIDEA

The area of the NORFANZ Cruise was between 159° E and 172° E, immediately to the south of the New Caledonia Region. The waters around this island and further east, south of the equator, as far as French Polynesia have been thoroughly investigated by the Centre IRD in

New Caledonia during the last 25 years. Over 95 species of Penaeoidea have been identified in a region previously thought to be very limited in species numbers (A. Crosnier, pers. com.). The NORFANZ collection might therefore have been expected to be essentially similar to that of the New Caledonia Region but two factors would have modified the species composition: 1) Depth. Most NORFANZ trawls that collected penaeoids were made in depths greater than 400 m (Table 1). The Penaeidae, Solenoceridae and Sicyoniidae usually inhabit waters less than about 400m deep – only 5 NORFANZ stations out of 73 that collected penaeoids were in this category. Aristeidae and Bentheseiemyidae generally inhabit deeper waters i.e. below 400m

and so depth is not a major limiting factor in species diversity of these families. 2) Latitude. The Cruise was in subtropical waters (approx. 26°–36°S). The greatest diversity of penaeoid species is within the tropics (Dall et al., 1991). This factor would eliminate homeothermous tropical species but include sub-tropical species e.g. in the NORFANZ collection, *Austropenaeus nitidus*, range 26°–40° S, and *Gennadas kempi*, range 32°–62° S, (Dall, 2001).

Three species in the NORFANZ collection are cosmopolitan in their distribution (*Aristaeomorpha foliacea*, *Aristaeopsis edwardsiana* and the pelagic *Fimchalia villosa*). Twelve extend through the Indo-West Pacific (*Aristeus mabalihissae*, *A. virilis*, *Hepomadus tener*, *Benthescycymus investigatoris*, *Gennadas gilchristi*, *Hadropenaeus lucasii*, *Haliporoides sibogae*, *Hymenopenaeus neptunus*, *Solenocera comata*, *Metapenaeopsis velutina*, *Sicyonia inflexa*, *S. truncata*). All of these species have been recorded for E. Australia (Crosnier, 1991, 2001; Dall, 1999, 2001) so these records can be regarded as extending their known range into the eastern sub-tropics of the Tasman Sea.

The rare species, *Gordonella kensleyi*, has been recorded in the Mozambique Channel and immediately south of New Caledonia (Crosnier, 1988), so the NORFANZ record extends its range. It will probably be found in eastern Australia and other intermediate locations. Until recently the only record of *Hymenopenaeus obliquirostris* was from the Kermadec Islands by the CHALLENGER in 1881, but it has now been found around Taiwan (Lee et al., 2001), New Caledonia and the NORFANZ area (Crosnier & Dall, 2004). With such widely separated locations it is likely to be found in intermediate areas. *Hymenopenaeus methalli* is reported from the New Caledonia Region as far as Tonga and in the NORFANZ area, a limited range for a member of this genus.

Overall the NORFANZ collection gives no indication that the area is faunistically isolated for the Penaeoidea, except for *Benthescycymus howensis*, which has not been collected outside the NORFANZ area. All other species collected have a wide distribution at least in the southwest Pacific, most in the Indo-West Pacific. The types of *Benthescycymus howensis* were from the Lord Howe Rise, but specimens were also collected by NORFANZ on the West Norfolk Ridge. Since this ridge extends well into the New Caledonia

Region, it is likely that *Benthescycymus howensis* has a wider distribution.

Since the Penaeoidea probably all have planktonic larvae, endemism on seamounts and ridges of the Tasman Sea is unlikely. Many of the adults of the species collected by the NORFANZ are bathypelagic or mesopelagic, but even if an adult population on a seamount was surrounded by depths well beyond their normal range, their planktonic larvae could bridge these in time.

#### ACKNOWLEDGEMENTS

I thank Peter J.F. Davic (Queensland Museum), who took part in the NORFANZ cruise, sorted and procured the penaeoid collection for this study, provided laboratory facilities and made useful comments that helped improve the manuscript.

I thank Alain Crosnier and Jean-François Dejouannet (Muséum national d'Histoire naturelle, Paris). The first has given valuable advice and loaned specimens and the latter has executed the figures of the petasma of *Gordonella kensleyi*. I thank the Publications Scientifique du Muséum national d'Histoire naturelle for permission to reproduce figures.

#### LITERATURE CITED

- ALCOCK, A. 1899. A summary of the deep-sea zoological work of the Royal Indian Marine Survey Ship "Investigator" from 1884 to 1897. Scientific Memoirs of the Medical Officer of the Army of India 11:45-93.
1901. A descriptive catalogue of the Indian Deep-sea Crustacea Decapoda Macrura and Anomala in the Indian Museum. Being a revised account of the deep-sea species collected by the Royal Indian Survey Ship "Investigator". Indian Museum, Calcutta. 286p.
- ALCOCK, A. & ANDERSON, A.R.S. 1894. Natural history notes from H.M. Indian Marine Survey steamer "Investigator", Commander C.F. Oldham, R.N. Commanding. Series II, No. 14. An account of a recent collection of deep sea Crustacea from the Bay of Bengal and Laccadive Sea. Journal of the Asiatic Society of Bengal 63: 141-185.
1899. An account of the deep-sea Crustacea dredged during the surveying-season of 1897-98. Natural history notes from H.M. Royal Indian Marine Survey Steamer "Investigator", commander T.H. Heming, R.N., commanding. Ser III, no. 2. Annals and Magazine of Natural History 7(3): 1-27, 278-292.
- ANDERSON, W.W. & LINDNER, M.J. 1945. A provisional key to the shrimps of the family Penaeidae with especial reference to American

- forms. Transactions of the American Fisheries Society 73: 284-319.
- BALSS, H. 1925. *Maerura* der Deutschen Tiefsee-Expedition. 3. Natantia, Teil A. Wissenschaften Ergebnisse der deutschen Tiefsee-Expedition auf dem Dampfer "Valdivia" 20(5): 217-315.
1927. *Maerura* der Deutschen Tiefsee-Expedition. 3. Natantia, Teil B. Wissenschaften Ergebnisse der deutschen Tiefsee-Expedition auf dem Dampfer "Valdivia" 23(6): 245-275.
1957. Systematik. Bronn's klassen und ordnungen des tierreichs 5(1)7. Decapoda 12: 1505-1672.
- BARNARD, K.II. 1947. Descriptions of new species of South African decapod Crustacea, with notes on synonymy and new records. Annals and Magazine of Natural History (series 11) 13: 361-392.
1950. Descriptive catalogue of South African decapod Crustacea. Annals of the South African Museum 38: 1-837.
- BATE, C.S. 1881. On the Penaeidea. Annals and Magazine of Natural History (5) 8: 169-196.
1888. Report on the Crustacea *Maerura* collected by H.M.S. "Challenger" during the years 1873-76. Report of the scientific results of the H.M.S. "Challenger" during the years 1873-76, Zoology, 24: 1-942.
- BOAS, J.E.V. 1880. Studier over Decapodernes Slægtskabsforhold. Dansk Videnskabernes Selskab, Copenhagen, Skrifter, Raekke 6, naturvidenskabelig og matematisk, Afdeling 1(2): 23-210.
- BORRADAILE, L.A. 1910. The Percy Sladen Trust Expedition to the Indian Ocean in 1905, under the leadership of Mr. J. Stanley Gardiner. Volume 2, No. 10. Penaeidea, Stenopidea, and Reptantia from the Western Indian Ocean. Transactions of the Linnean Society of London, series 2, Zoology, 13(2): 257-264.
- BOUVIER, E.L. 1905. Sur les Pénéides et les Sténopides recueillis par les expéditions françaises et monégasques dans l'Atlantique oriental. Comptes rendus hebdomadaires des Séances de l'Académie des Sciences, Paris 140: 980-983.
1908. Crustacés décapodes (Pénéides) provenant des campagnes de l'Hirondelle et de la "Princesse-Alice" (1886-1907). Résultats des Campagnes scientifiques accomplies par le Prince Albert I de Monaco 33:1-122.
- BURKENROAD, M.D. 1934. Littoral Penaeidea chiefly from the Bingham Oceanographic Collection, with a revision of *Penaeopsis* and Descriptions of two new Genera and Eleven New American Species. Bulletin of the Bingham Oceanographic Collection. 4(7): 1-109.
1936. The Aristeinae, Solenoecrinae and pelagic Penaeinae of the Bingham oceanographic collection. Bulletin of the Bingham Oceanographic Collection 5(2): 1-151.
1938. The Templeton Crocker Expedition. XIII. Penaeidae from the region of Lower California and Clarion Island with descriptions of four new species. Zoologica 23(1): 55-91.
- BURUKOVSKY, R.N. 1983. Keys to shrimps and lobsters. Russian Translation series (ed. Balkema, Rotterdam). 5: 1-274.
1991. New and rare species of shrimps from the South-West part of the Indian Ocean. Zoologicheskii Zhurnal 70(11): 36-41.
- BURUKOVSKY, R.N. & ROMENSKY, L.L. 1991. *Funchalia* shrimps (Decapoda, Natantia, Penaeidae): Taxonomy, distribution and some problems of biology. Bulletin Moskovshogo Obshestva Ispytatelei Pirody. Otdel Biologicheskii 96(6); 60-72. [In Russian, with English summary].
- CALMAN, W.T. 1925. On maerurous decapod Crustacea collected in South African waters by the S.S. "Pickle". Investigational reports of the Division of Fisheries, Union of South Africa, Report No. 4 for the year 1925. Special Report 3:1- 26.
- CLARK, M.R., ROBERTS, C., WILLIAMS, A. & LAST, P. 2003. Voyage report of a biodiversity survey of seamounts and slopes of the Norfolk Ridge and Lord Howe Rise (NORFANZ), May - June, 2003. Report to Founding Parties and voyage participants.
- CROSNIER, A. 1978. Crustacés Décapodes Pénéides Aristeidae (Benthieseyminae, Aristeinae, Solenoecrinae). Faune de Madagascar 46: 1-197.
1984. Penaeoid shrimps (Benthieseyminae, Aristeinae, Solenoecrinae, Sicyoniidae) collected in Indonesia during the "Corindon II" et "IV" expeditions. Marine Research in Indonesia 24: 19-47.
1985. Crevettes Pénéides d'eau profonde récoltées dans l'océan Indien lors des campagnes "Benthedi", "Safari 1" & "II", "MD 32/Réunion". Bulletin du Muséum national d'Histoire naturelle, Paris (4) 7: 839-877.
1988. Contribution à l'étude des genres *Haliporus* Bate, 1881 et *Gordonella* Tirmizi, 1960 (Crustacea Decapoda Penaeoidea). Description de deux espèces nouvelles. Bulletin du Muséum national d'Histoire naturelle, Paris (4)10: 563-601.
1989. Benthieseymidae, Aristeidae, Solenoecridae (Crustacea Penaeoidea). Mémoires du Muséum national d'Histoire naturelle (series A) 144: 37-67.
1991. Crustacea Decapoda: Les *Metapenaeopsis* indo-ouest-pacifiques sans appareil stridulant (Penaeidae) Deuxième partie. Mémoires du Muséum national d'Histoire naturelle (series A) 152: 155-297.
- 1994a. Crustacea Decapoda: Penaeoidea récoltés lors de la campagne "Karubar" en Indonésie. Mémoires du Muséum national d'Histoire naturelle (series A) 161: 351-365.

- 1994b. Crustacea Decapoda: Penaeoidea à l'exclusion des Sicyoniidae récoltés dans la zone économique des îles Wallis et Futuna lors de la campagne "Musorstom 7". Mémoires du Muséum national d'Histoire naturelle (series A) 161: 367-373.
2003. *Sicyonia* (Crustacea, Decapoda, Penaeoidea, Sicyoniidae) de l'Indo-ouest Pacifique. *Zoosystema* 25(2): 197-348.
- CROSNIER, A. & DALL, W. 2004. Redescription of *Hymenopenaeus obliquirostris* (Crustacea, Decapoda, Penaeoidea, Solenoecidae) and descriptions of two new species of *Hymenopenaeus* from the Indo-West Pacific. *Zootaxa* 600: 1-26.
- CROSNIER, A. & FOREST, J. 1969. Note préliminaire sur les Pénéides recueillis par l'"Ombango" au large du plateau continental, du Gabon à l'Angola (Crustacea: Decapoda: Natantia). *Bulletin du Muséum national d'Histoire naturelle (series 2)* 41(2): 544-555.
1973. Les crevettes profondes de l'Atlantique oriental tropical. *Faune tropicale* 19: 1-409.
- DALL, W. 1957. A revision of the Australian species of Penaeinae (Crustacea Decapoda: Penaeidae). 8: 136-230.
1991. Zoogeography of the Penaeidae. *Memoirs of the Queensland Museum* 31: 39-50.
1999. Australian species of Solenoecidae (Penaeoidea: Decapoda). *Memoirs of the Queensland Museum* 43(2):553-587.
2001. Australian species of Aristeidae and Benthescymidae (Penaeoidea: Decapoda). *Memoirs of the Queensland Museum* 46(2): 409-441.
- DALL, W., HILL, B.J., ROTH LISBERG, P.C. & STAPLES, D.J. 1990. The biology of the Penaeidae. *Advances in Marine Biology* 27:1-489.
- DANA, J.D. 1852. Crustacea, United States Exploring Expedition during the years 1838, 1839, 1840, 1841, 1842 under the command of Charles Wilkes, U.S.N. 13(1): I-VIII + 1-685p.
- DE FREITAS, A.J. 1984a. The Penaeoidea of Southeast Africa. I. The study area and key to the southeast African species. *Investigational Report of the Oceanographical Research Institute* 56: 1-31.
- 1984b. The Penaeoidea of Southeast Africa. V. The Family Sicyoniidae. *Investigational Report of the Oceanographical Research Institute* 60: 1-12.
1985. The Penaeoidea of southeast Africa. II. The Families Aristeidae and Solenoecidae. *Investigational Report of the Oceanographic Research Institute, Durban* 57: 1-69.
- DE MAN, J.G. 1907. Diagnoses of new species of maerurus decapod Crustacea from the "Siboga" Expedition. II. Notes from the Leyden Museum 29: 127-147.
1911. The Decapoda of the "Siboga" Expedition. Part 1. Family Penaeidae. *Siboga Expedition monographie* 39a: 1-131.
1913. The Decapoda of the "Siboga" Expedition. Part 1. Family Penaeidae. *Siboga Expedition monographie* 39a: Suppl., 1-X pl.
1922. On a collection of maerurus decapod Crustacea of the "Siboga" Expedition, chiefly Penaeidae and Alpheidae. *The Decapoda of the Siboga Expedition. Siboga Expedition monographie* 39a: 4: 1-51.
- FAXON, W. 1895. The stalk-eyed Crustacea. Reports on an Exploration off the West Coasts of Mexico, Central and South America and off the Galapagos Islands, in charge of Alexander Agassiz, by the U.S. Fish Commission Steamer "Albatross", during 1891, Lieut.-Commander Z.L. Tanner, U.S.N. commanding. *Memoirs of the Museum of comparative Zoology at Harvard College* 18:1-292, fig. 1-6, pl. A-K.
- GREY, D.L., DALL, W. & BAKER, A. 1983. A guide to the Australian penaeid prawns. (Department of Primary Production, Northern Territory: Darwin). 140p.
- GRIFFITHS, F.B. & BRANDT, B. 1983. Distribution of mesopelagic decapod Crustacea in and around a warm-core eddy in the Tasman Sea. *Marine Ecology - Progress Series* 12: 175-184.
- GRIPPA, 1976. *Funchalia woodwardi* Johnson, 1867 nelle acque di Sicilia, con osservazioni sul genere. *Atti della Societa italiana di Scienze naturali e del Museo Civico di Storia Naturale, Milano*. 117(3/4): 117-136.
- GURNEY, 1924. Crustacea. Part IX. Decapod larvae. *Natural History Report of the "Terra Nova" Expedition (Zoology)*. 8(2): 37-202.
- HAYASHI, K.-I. 1983a. Prawns, shrimps and lobsters from Japan (11). Family Aristeidae (Aristeinae). Genus *Aristeus*. *Aquabiology* 26 (V - 3): 188-191.
- 1983b. Prawns, shrimps and lobsters from Japan (12). Family Aristeidae (Aristeinae). Genera *Aristaeomorpha* and *Hepomadus*. *Aquabiology* (V - 4): 280-283.
- 1983c. Prawns, shrimps and lobsters from Japan (13). Family Aristeidae (Aristeinae). Genera *Hemipenaeus* and *Plesiopenaeus*. *Aquabiology* 28 (V - 5):366-369.
- 1983d. Prawns, shrimps and lobsters from Japan (14). Family Aristeidae (Benthescyminae). Genus *Benthescymus*. *Aquabiology* 29 (V - 6):438-441.
- 1984a. Prawns, shrimps and lobsters from Japan (15). Family Aristeidae (Benthescyminae). Genus *Gennadas* (1). *Aquabiology* 30 (VI - 1): 18-21.
- 1984b. Prawns, shrimps and lobsters from Japan (16). Family Aristeidae (Benthescyminae). Genus *Gennadas* (2). *Aquabiology* 30 (VI - 1): 140-143.

- 1985a. Prawns, shrimps and lobsters from Japan (22). Family Sicyoniidae. Genus *Sicyonia* (1). *Aquabiology* 7(2): 140-143.
- 1985b. Prawns, shrimps and lobsters from Japan (23). Family Sicyoniidae. Genus *Sicyonia* (2). *Aquabiology* 7(3): 194-197.
- 1985e. Prawns, shrimps and lobsters from Japan (2). Family Sicyoniidae. Genus *Sicyonia* (3). *Aquabiology* 7(4): 260-263.
1986. Shrimps. In Baba, K., Hayashi, K-I., & Toriyama, M. (eds) *Decapod crustaceans from continental shelf and slope around Japan*. (Japan Fisheries Resource Conservation: Tokyo) 336 p.
1992. *Dendrobranchiata crustaceans from Japanese waters*. (Seibutsu Kenkyusha: Tokyo). 300 p.
- IWASAKE, N. & NEMOTO, T. 1987. Pelagic shrimps (Crustacea: Decapoda) from the Southern Ocean between 150°E and 115°E. *Memoirs of National Institute of Polar Research. Series E. Biology and Medical Science* 38: 1-40.
- JOHNSON, J.Y. 1867. Descriptions of a new genus and new species of macrurous decapod Crustaceans, belonging to the Penaeidae, discovered at Madeira. *Proceedings of the Zoological Society of London* 1867: 895-901.
- KEMP, S.W. 1913. Pelagic Crustacea Decapoda of the Percy Sladen Expedition in H.M.S. "Sea Lark". *Transactions of the Linnacian Society of London* (2) *Zoology*, 16(1): 1-190, pl.7.
- KENSLEY, B. 1968. Deep sea decapod Crustacea from west of Cape Point, South Africa. *Annals of the South African Museum* 50(12): 283-323.
1971. The genus *Gennadas* in the waters around Southern Africa. *Annals of the South African Museum* 72(2): 13-44.
1972. Shrimps and prawns of southern Africa. (South African Museum: Capetown). 65 p.
1977. The South African "Meiring Naude" Cruises. Part 5. Crustacea, Decapoda, Reptantia and Natantia. *Annals of the South African Museum* 74(2): 13-44.
1981. On the zoogeography of South African decapod Crustacea, with a distributional checklist of the species. *Smithsonian Contributions to Zoology* 338: 1-164.
- KENSLEY, B.F., TRANTER, H.A. & GRIFFIN, D.J.G. 1987. Deepwater decapod Crustacea from eastern Australia (Penaeidea and Caridea). *Records of the Australian Museum* 39: 263-331.
- KIKUCHI, T. & NEMOMOTO, T. 1986. List of pelagic shrimps (Crustacea, Decapoda) from the western North Pacific. *Bulletin of the Biogeographical Society of Japan* 41(7): 51-60.
1991. Deep-sea shrimps of the genus *Benthescymnus* (Decapoda: Dendrobranchiata) from the western North Pacific. *Journal of Crustacean Biology* 11(1): 64-89.
- KOMAI, T. 1993. Deep-sea shrimps of the family Aristeidae (Decapoda: Dendrobranchiata) from northern Japan, with the description of a new species of *Aristeus*. *Crustacean Research* 22: 21-34.
- KUBO, I. 1949. Studies on the penaeids of Japanese and its adjacent waters. *Journal of the Tokyo College of Fisheries* 36: 1-467.
- LEE, D-A., KANG, W.F., SHIH, C-T., YU, H-P. & LIAO, I.C. 2001. Taxonomy and distribution of the genus *Hymenopenaeus* Smith, 1882 (Decapoda, Solenoceridae) in the waters adjacent to Taiwan. *Journal of the Fisheries Society of Taiwan* 28: 49-63.
- LENS, H & STRUNCK, K. 1914. Die Decapoden der Deutschen Südpolar-Expedition 1901-1903. Brachyuren und Macruren mit Ausschluss der Sergestiden. *Wissenschaftliche Ergebnisse der Deutsche Südpolar-Expedition*. 15, *Zoologie*, 7: 259-345.
- LIU, J.Y. & ZHONG, Z. 1986. Penaeoid shrimps of the South China Sea. (Agricultural Publishing House: Beijing). 278 p.
- MIERS, E.J. 1878. Notes on the Penaeidae in the collection of the British Museum, with descriptions of some new species. *Proceedings of the Zoological Society of London*, 1878: 289-310.
- MILNE EDWARDS, H. 1837. *Histoire naturelle des Crustacés, comprenant l'anatomic, la physiologie et la classification de ces animaux* 2: 1-532.
- MILNE EDWARDS, A. & BOUVIER, E.L. 1909. Reports on the results of dredging, under the supervision of Alexander Agassiz, in the Gulf of Mexico (1877-78), in the Caribbean Sea (1878-79), and along the Atlantic coast of the United States (1980), by the U.S. Coast Survey Steamer "Blake", Lieut.-Com. C.D. Sigsbee, U.S.N., and Commander J.R. Bartlett, U.S.N. commanding. 44. Les Pénécides et Sténopides. *Memoirs of the Museum of comparative Zoology at Harvard College*, 27(3): 177-274.
- MIYAKE, S. 1975. Macrura. Pp. 98-109. In Utimo, H. (ed.) *The aquatic lower animals of Japan*. (Gakken illustrated Nature Encyclopedia: Gakken, Tokyo).
1982. Japanese crustaceans decapods and stomatopods in colour. Vol. 1, Macrura, Anomura and Stomatopoda. (Hoikushu: Osaka). 261p.
- OKADA, Y., SAKAMOTO, I., AMANO, R. & TOMINAGA, Y. 1966. Preliminary report of the benthic biological survey in Suruga Bay. *Journal of the Faculty of Oceanography of Tokai University* 1966(1): 135-155.
- ORTMANN, A. 1898. *Gliederfüssler: Arthropoda*. *Bronn's Klassen und Ordnungen des Tierreichs*, 5(2). Crustacea, Malacostraca (47-52), [Systematik]: 1057-1168.
- PEQUEGNAT, W.E. & ROBERTS, T.W. 1971. Decapoda shrimps of the family Penaeidae. In: *Gulf of Mexico deep-sea fauna, Decapoda and Euphausiacea*. *Series Atlas of the marine environment* 20: 8-9.

- PÉREZ FARFANTE, I. 1973. Morphological study of diagnostic characters in Western Atlantic *Hepomadus* (Crustacea, Decapoda, Penaeidae). *Fishery Bulletin, United States*, 73(3): 441-453.
1978. Families Hippolytidae, Palemonidae (Caridea), and Penaeidae, Sicyoniidae (Penaeoidea). In W. Fischer, FAO Species Identification Sheets for Fishery Purposes, Western Central Atlantic, volume 6 (unpaginated), (FAO: Rome).
1988. Illustrated key to the penaeoid shrimps of commerce in the Americas. NOAA Technical Report, National Fisheries Service 64: 1-32.
- PÉREZ FARFANTE, I. & KENSLEY, B.F. 1997. Penaeoid and sergestoid shrimps and prawns of the world. Keys and diagnoses for the families and genera. *Mémoires du Muséum national Histoire naturelle* 175: 1-233.
- RACEK, A.A. 1967. A new species of *Metapenaeopsis* (Crustacea: Decapoda) from the northern Australian waters. *Proceedings of the Linnean Society of New South Wales* 92(3): 251-253.
- RACEK, A.A. & DALL, W., 1965. Littoral Penaeinae (Crustacea: Decapoda) from northern Australia, New Guinea, and adjacent waters. *Verhandelingen der Koninklijke Nederlandse Akademie van Wetenschappen, afdeling Natuurkunde* (2) 56: 1-116.
- RAMADAN, M.M. 1938. Crustacea: Penaeidae. *John Murray Expedition 1933-34. Scientific Report* 5: 35-76.
- RAFINESQUE-SCHMALTZ, C.S. 1815. *Analyse de la nature ou tableau de l'univers et des corps organisés*. 224 pages. Palermo.
- RATHBUN, M.J. 1906. The Brachyura and Maerura of the Hawaiian Islands. *Bulletin of the United States Fisheries Commission* 23(3): 827-930.
- RICHARD, J. 1900. Les campagnes scientifiques de S.A.S. le "Prince Albert I" de Monaco. (Imprimerie de Monaco) 140p.
1903. Campagne scientifique du yacht "Princess Alice" en 1902. *Bulletin de la Société Zoologique, France* 28: 63-79.
- RISSO, A. 1827. *Histoire naturelle des principales productions de l'Europe méridionale et particulièrement de celles des environs de Nice et des Alpes-Maritimes* 5: 1-403.
- ROBERTS, T.W. & PEQUEGNAT, W.E. 1970. Deep water shrimps of the family Penaeidae. *Texas A&M University Oceanography Studies* 1(3): 21-57.
- SMITH, S.I. 1884. Report on the decapod Crustacea of the "Albatross" dredgings off the east coast of the United States in 1883. *Annual Report of the Commissioner of Fish and Fisheries for 1882*: 345-424.
- SQUIRES, H.J. 1990. Decapod Crustacea of the Atlantic Coast of Canada. *Canadian Bulletin of Fisheries and Aquatic Sciences* 221: 1-532.
- STAROBOGATOV, Y.I. 1972. Penaeidae (Crustacea Decapoda) of Tonkin Gulf. *Issledovaniya Fauny Morei* 10(18): 359-415. (in Russian).
- STEBBING, T.R.R. 1914. South African Crustacea (Part VII of S.A. Crustacea, for the Marine Investigations in South Africa). *Annals of the South African Museum* 15: 1-55.
1915. South African Crustacea (Part VIII). *Annals of the South African Museum* 15: 57-104.
- TAKEDA, M. & HANAMURA, Y. 1994. Deep-sea shrimps and lobsters from the Flores Sea collected by the R.V. "Hakuho-Maru" during KH-85-1 cruise. *Bulletin of the National Science Museum series A (Zoology)* 20(1): 1-37.
- TIRMIZI, N.M. 1960. Crustacea: Penaeidae. Part II. Series Benthosicymae. With a note by I. Gordon. *John Murray Expedition 1933-34, Scientific Report* 10: 319-383.
- WILLIAMS, A. & GOWLETT-HOLMES, K. 2003. NORFANZ Voyage 10 May to 8 June, 2003. Biodiversity survey of seamounts and slopes of the Norfolk Ridge and Lord Howe Rise. (CSIRO Marine Research: Canberra).
- WILLIAMS, A.B. 1984. Shrimps, lobsters, and crabs of the Atlantic Coast of the eastern United States, Maine to Florida. (Smithsonian Institution Press: Washington, D.C.). 550p.
- WOOD-MASON, J. 1891. Phylum Appendiculata. Branch Arthropoda. Class Crustacea. In: J. Woodmason (eds.) *Natural History Notes from H.M. Indian Marine Survey Steamer "Investigator"*, Commander R.F. Hoskyn, R.N. commanding. Ser. II, No. 1. On the results of deep-sea dredging during the season 1890-91. Phylum Appendiculata. *Annals and Magazine of Natural History* (6) 8: 269-286, 252-362.
1892. Illustrations of the zoology of the H.M. Indian Marine Survey Steamer "Investigator" under the command of Commander A. Carpenter, R.N., D.S.O., and of Commander R.F. Hoskin, R.N. Part I. Crustaceans, pls 1-IV.
- YU, H-P. & CHAN, T-Y. 1986. The illustrated penaeoid prawns of Taiwan. (Southern Materials Center: Taipei).