

A map of Southeast Asia and surrounding regions, including India, Myanmar, Thailand, Vietnam, Philippines, Sri Lanka, and the Maldives. A compass rose is centered over the region, with 'N' for North, 'S' for South, 'W' for West, and 'E' for East. A white box with a black border is overlaid on the map, containing the project title.

Project 15: Atlas Akhyana

**STORIES & CLIMATE
CHANGE MAPS OF 51 ASEM
COUNTRIES**

**#ASEFYLS4 LEADERSHIP IN ACTION PROJECTS
November 26th, 2021**

1. PROJECT GOALS

Atlas = a book of maps, *Akhyana* = to tell a narrative



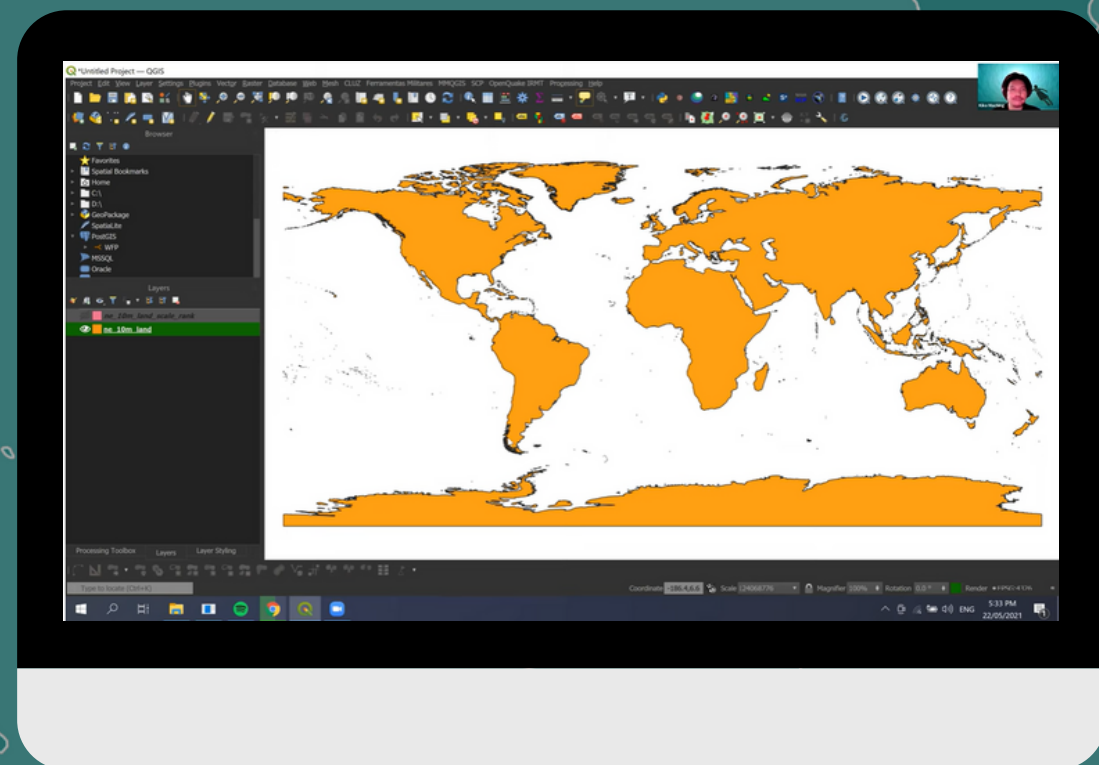
Main components of the project:

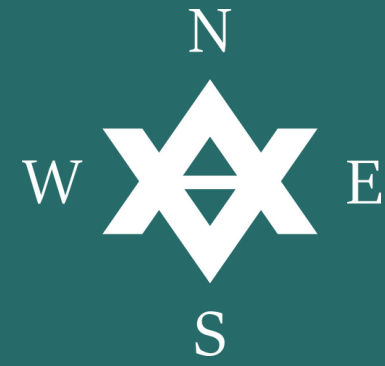
1 climate action

2 mapping

3 storytelling

2. THE PROJECT JOURNEY





3. RESULTS

Atlas Akhyana: a reader's guide





ATLAS IN NUMBERS

5 cartographers

10 countries covered

9+ hours of QGIS trainings

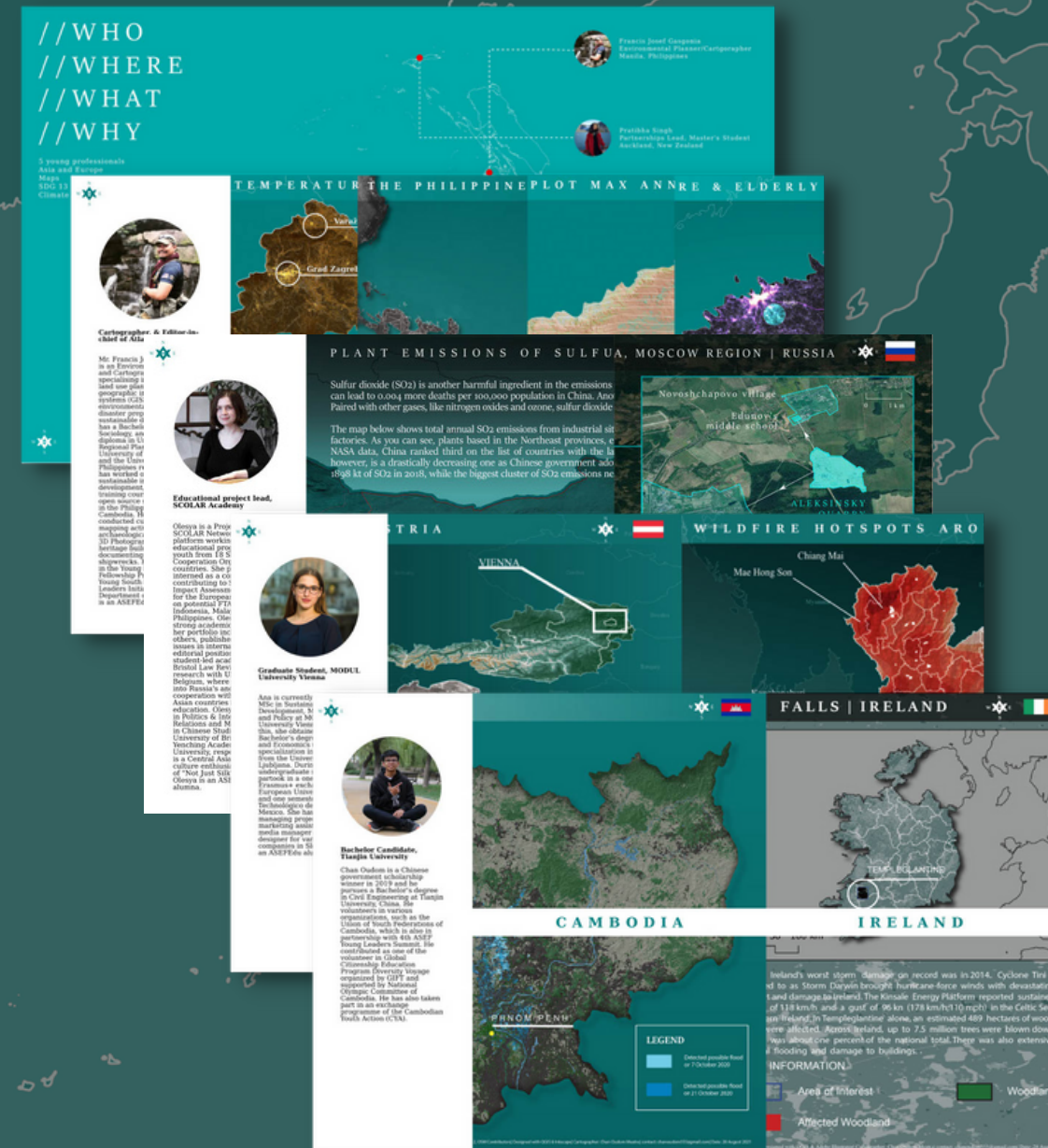
13 maps + a story

HOW TO READ ATLAS

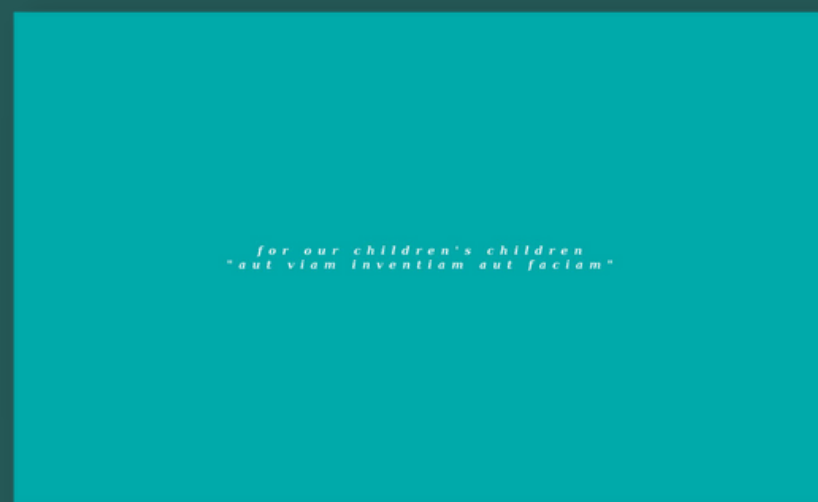
Title



pp. 3-7
Introducing the team



p.2
Mission statement



4. CHALLENGES

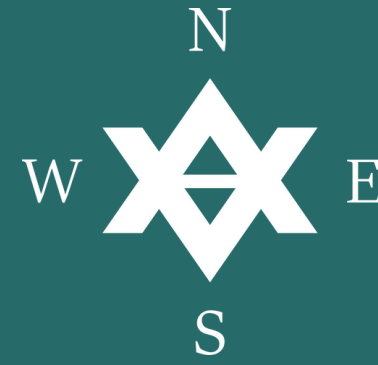
A steep learning curve

B time constraints

C access to data

D dropout rate





5. REFLECTION

What have we learned?
Where do we plan to use the acquired
knowledge and skills?



CALL FOR CONTRIBUTIONS

If you want to contribute to Atlas Akhyana
with a map of your own, please reach out to

Ana Udovič:

udovic.anna@gmail.com

