

Fig. S1. Simultaneous analysis parsimony strict consensus with JK values $\geq 50\%$ above each branch.

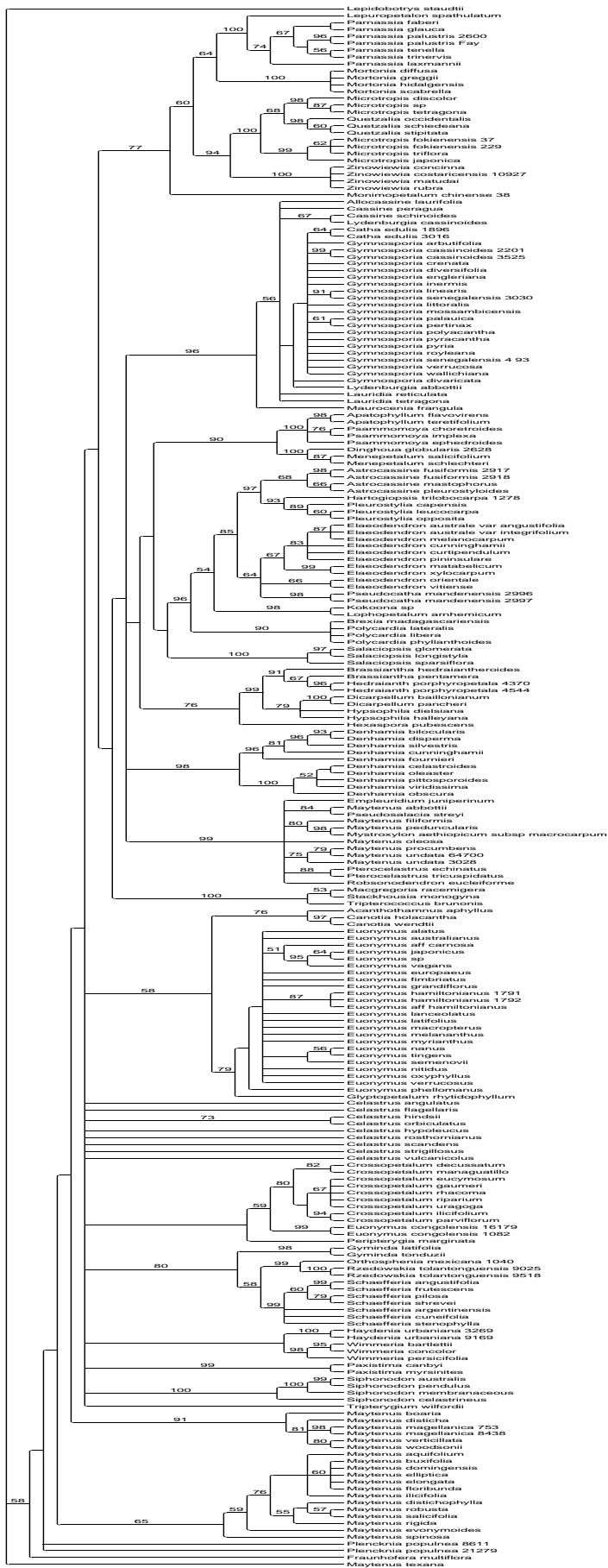


Fig. S2. 26S rDNA parsimony strict consensus with JK values $\geq 50\%$ above each branch.

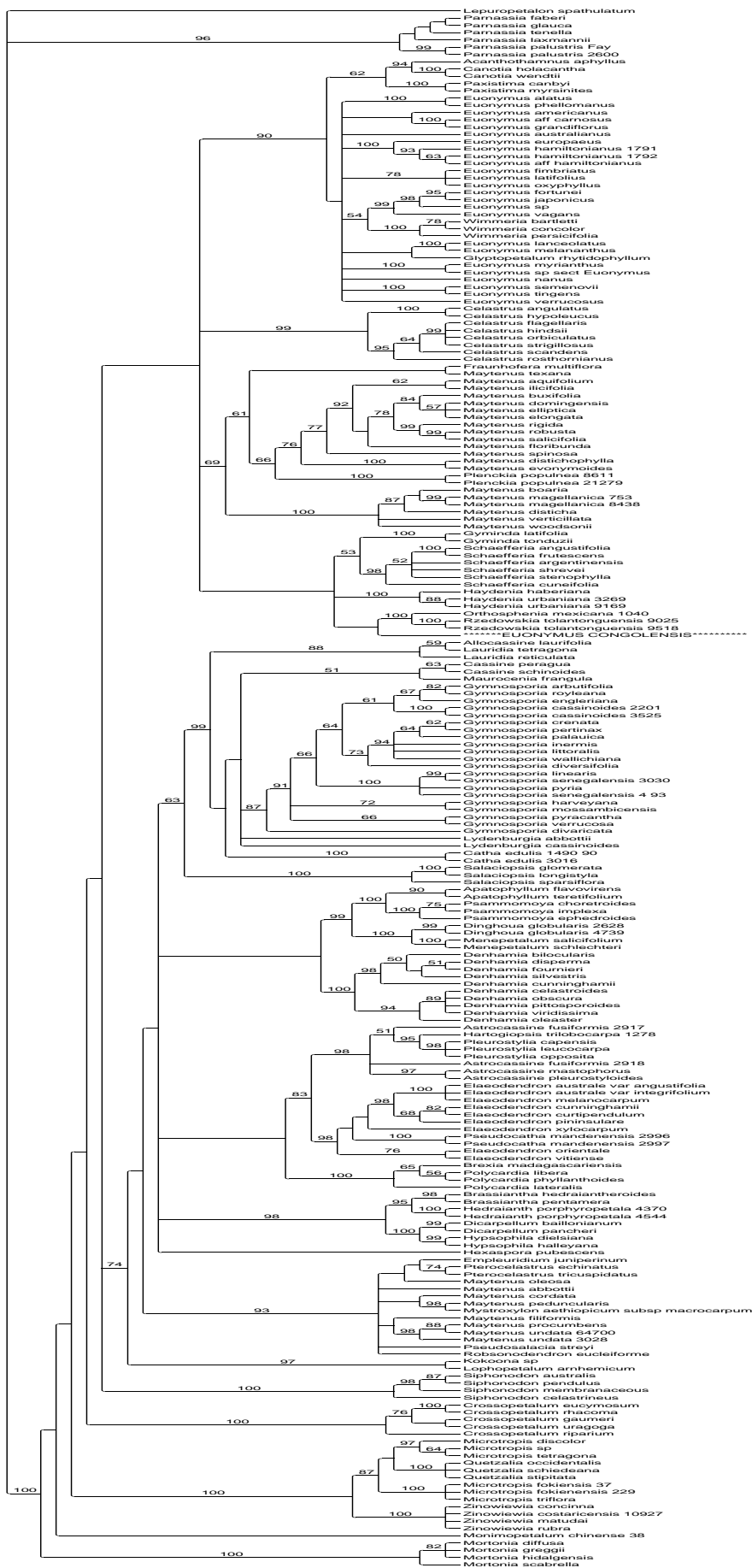


Fig. S3. ITS parsimony strict consensus with JK values $\geq 50\%$ above each branch.

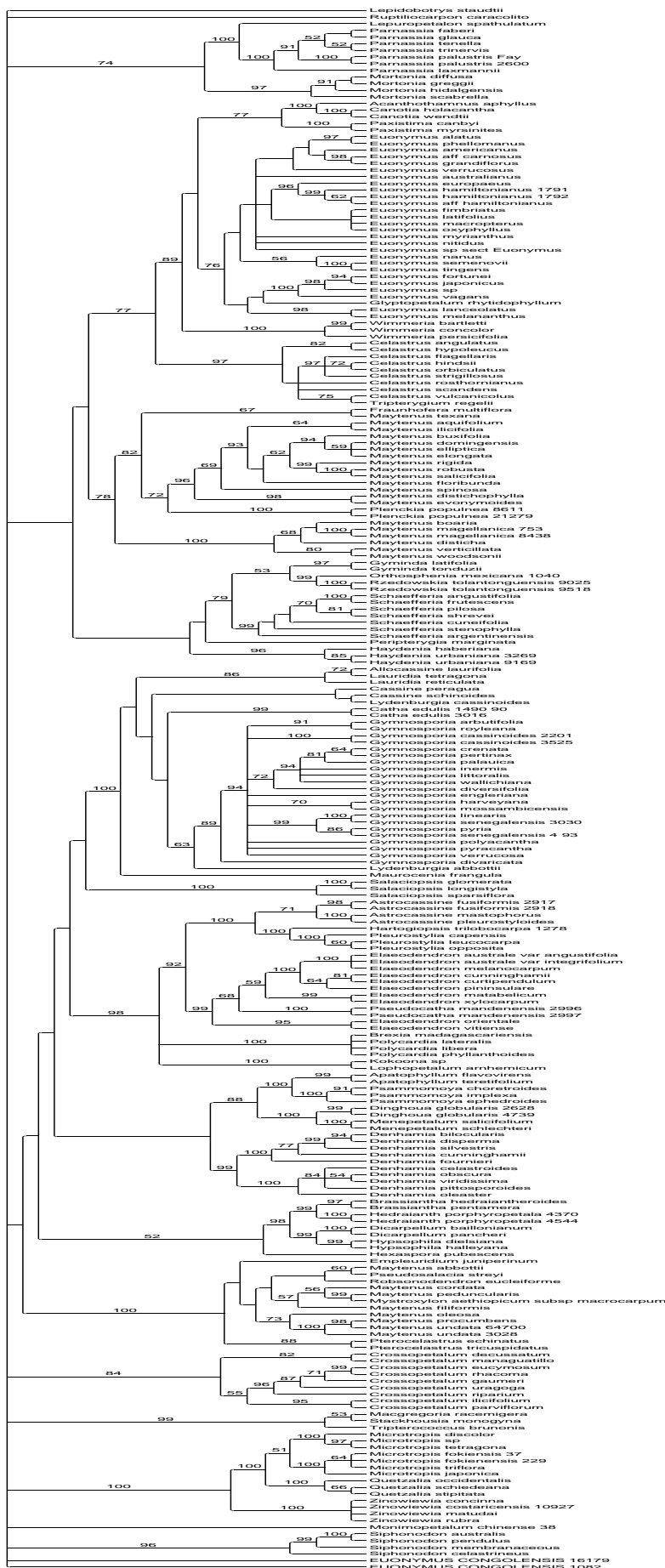


Fig. S4. Combined rDNA parsimony strict consensus with JK values $\geq 50\%$ above each branch.

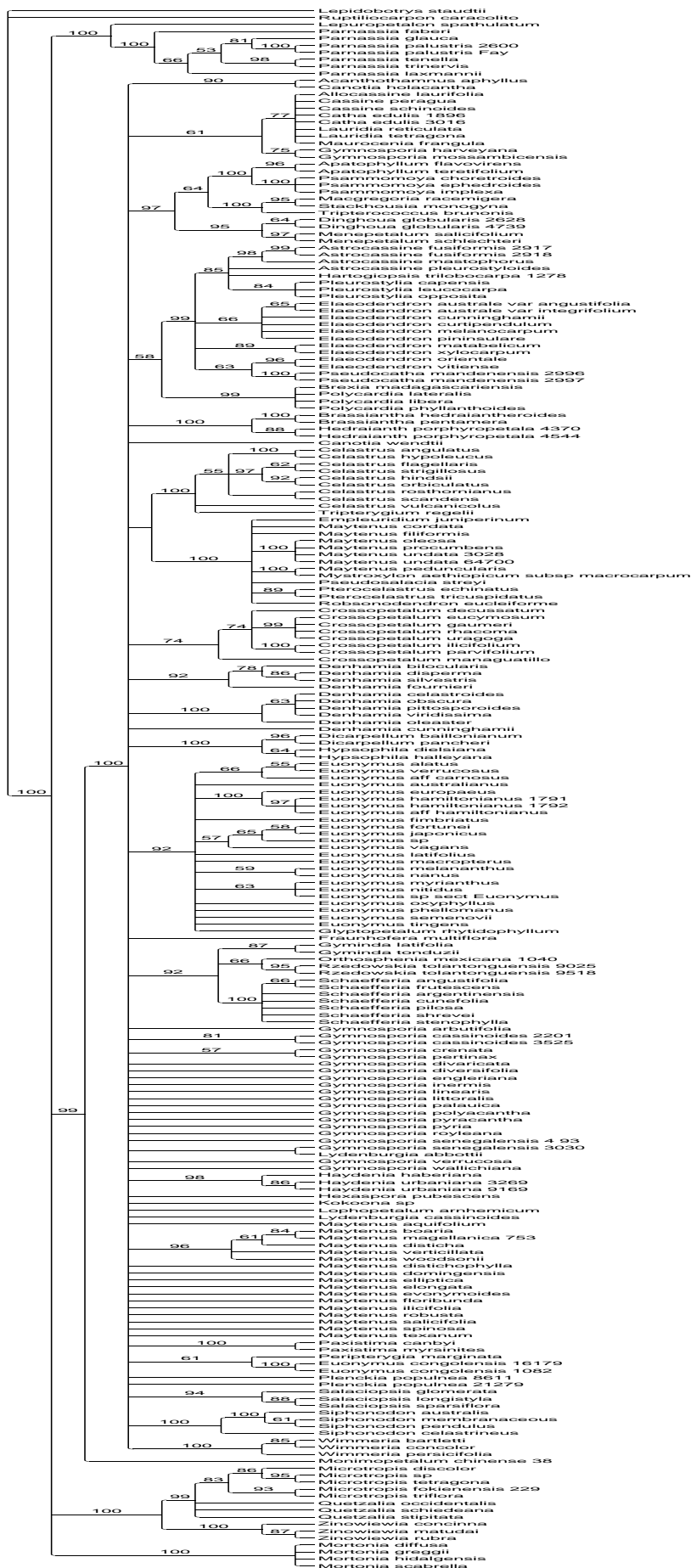


Fig. S5. *matK* parsimony strict consensus with JK values $\geq 50\%$ above each branch.



Fig. S6. *trnL-F* parsimony strict consensus with JK values $\geq 50\%$ above each branch.

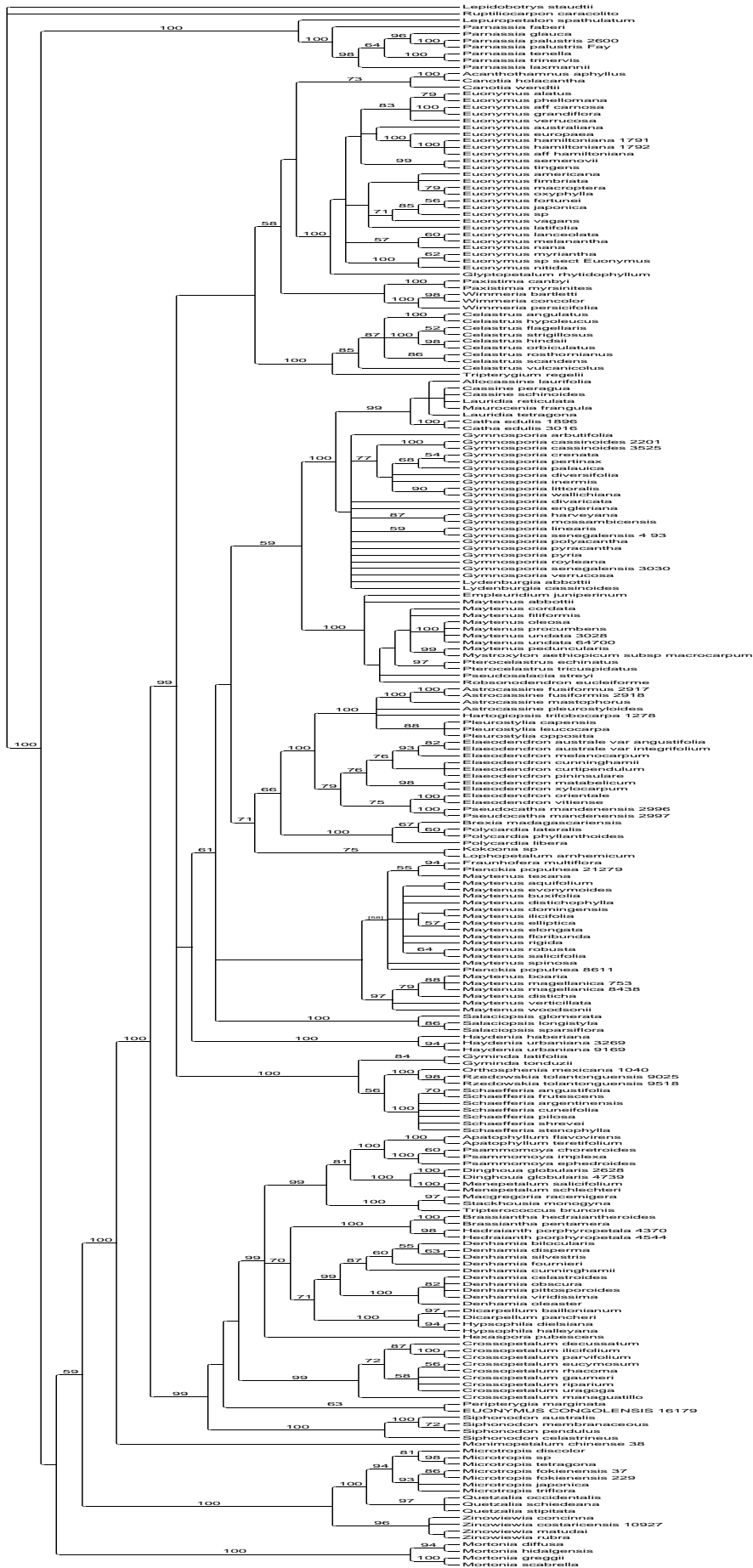


Fig. S7. Plastid parsimony strict consensus with JK values $\geq 50\%$ above each branch.



Fig. S8. Morphology parsimony strict consensus with JK values $\geq 50\%$ above each branch.

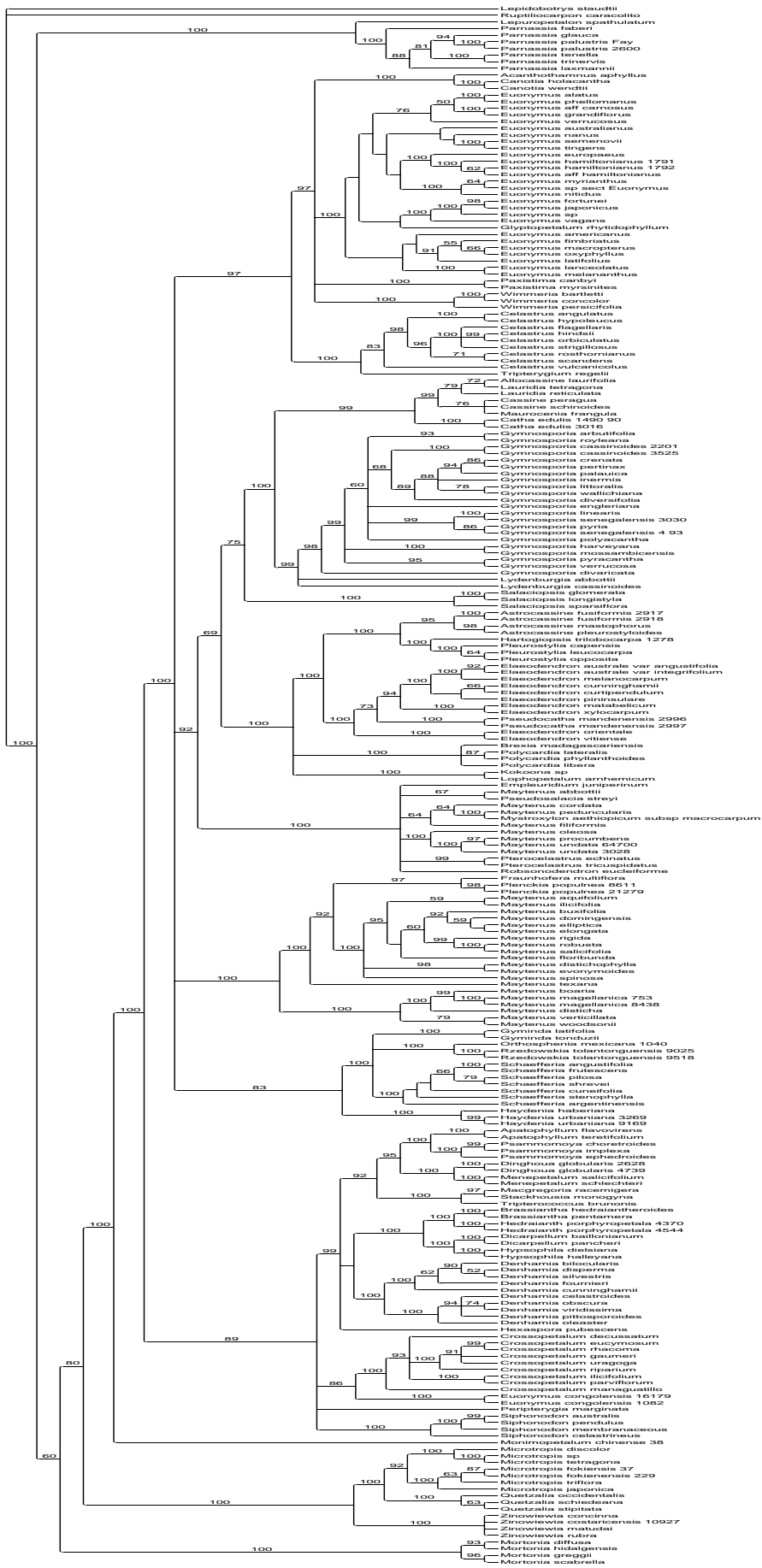


Fig. S9. Simultaneous analysis (after exclusion of *Euonymus congolensis* ITS sequence) parsimony strict consensus with JK values $\geq 50\%$ above each branch.