

# **DIGIVOX mini Hybrid**

**User Manual**



## Copyright and Trademark Notice

©2007 by MSI. All rights reserved.

Information in this document is subject to change without notice. No part of this document may be reproduced or transmitted in any form or by any means, electronic or mechanical without prior written permission of MSI.

MSI makes no representation or warranties with respect to the contents hereof and specifically disclaims any implied warranties of merchantability or fitness for any particular purpose. MSI reserves the right to revise this manual and to make changes in its content without obligation to notify any person or organization of such revision or change. In no event shall MSI be liable to you or any third party for any consequential, incidental, direct, indirect, special, punitive, or other damages (including without limitation, damages for loss of profits, interruptions, loss of information, pecuniary loss, etc.), even if MSI has been advised of the possibility of such damages arising from any defect or error in this manual or product.

Windows<sup>®</sup> is a trademark of Microsoft Corporation. All other brand names used in this document are registered trademarks of their respective companies.

CE Statement: This equipment has been tested and complies with EN 55013:  
2001/A1: 2003+EN61000-3-2:2000+EN61000-3-3:1995/A1:2001  
EN55020:2002+A1:2003+A2:2005, IEC 61000-4-2: 1995+A1: 1998+A2:2000 ) standards.

## COPYRIGHT NOTICES

The material in this document is the intellectual property of **MICRO-STAR INTERNATIONAL**. We take every care in the preparation of this document, but no guarantee is given as to the correctness of its contents. Our products are under continual improvement and we reserve the right to make changes without notice.

## TRADEMARKS

All trademarks are the properties of their respective owners.

## MICRO-STAR INTERNATIONAL Statement

All contents are subject to change without notice.

One year guarantee is for the device only. Warranty for accessories expired within seven days of purchase date.



廢電池請回收

For better environmental protection, waste batteries should be collected separately for recycling or special disposal.

## WEEE Statement

**English:** To protect the global environment and as an environmentalist, MSI must remind you that...Under the European Union ("EU") Directive on Waste Electrical and Electronic Equipment, Directive 2002/96/EC, which takes effect on August 13, 2005, products of "electrical and electronic equipment" cannot be discarded as municipal waste anymore and manufacturers of covered electronic equipment will be obligated to take back such products at the end of their useful life. MSI will comply with the product take back requirements at the end of life of MSI-branded products that are sold into the EU. You can return these products to local collection points.



**Deutsch:** Hinweis von MSI zur Erhaltung und Schutz unserer Umwelt Gemäß der Richtlinie 2002/96/EG über Elektro- und Elektronik-Altgeräte dürfen Elektro- und Elektronik-Altgeräte nicht mehr als kommunale Abfälle entsorgt werden. MSI hat europaweit verschiedene Sammel- und Recyclingunternehmen beauftragt, die in die Europäische Union in Verkehr gebrachten Produkte, am Ende seines Lebenszyklus zurückzunehmen. Bitte entsorgen Sie dieses Produkt zum gegebenen Zeitpunkt ausschliesslich an einer lokalen Altgerätesammelstelle in Ihrer Nähe.

**Français:** En tant qu'écologiste et afin de protéger l'environnement, MSI tient à rappeler ceci...Au sujet de la directive européenne (EU) relative aux déchets des équipements électriques et électroniques, directive 2002/96/EC, prenant effet le 13 août 2005, que les produits électriques et électroniques ne peuvent être déposés dans les décharges ou tout simplement mis à la poubelle. Les fabricants de ces équipements seront obligés de récupérer certains produits en fin de vie. MSI prendra en compte cette exigence relative au retour des produits en fin de vie au sein de la communauté européenne. Par conséquent vous pouvez retourner localement ces matériels dans les points de collecte.

**Srpski:** Da bi zaštitili prirodnu sredinu, i kao preduzeće koje vodi računa o okolini i prirodnoj sredini, MSI mora da vas podesti da...Po Direktivi Evropske unije ("EU") o odbačenoj elektronskoj i električnoj opremi, Direktiva 2002/96/EC, koja stupa na snagu od 13. Avgusta 2005, proizvodi koji spadaju pod "elektronsku i električnu opremu" ne mogu više biti odbačeni kao običan otpad i proizvođači ove opreme biće prinuđeni da uzmu natrag ove proizvode na kraju njihovog uobičajenog veka trajanja. MSI će poštovati zahtev o preuzimanju ovakvih proizvoda kojima je istekao vek

trajanja, koji imaju MSI oznaku i koji su prodati u EU. Ove proizvode možete vratiti na lokalnim mestima za prikupljanje.

**Polski:** Aby chronić nasze środowisko naturalne oraz jako firma dbająca o ekologię, MSI przypomina, że...Zgodnie z Dyrektywą Unii Europejskiej ("UE") dotyczącą odpadów produktów elektrycznych i elektronicznych (Dyrektywa 2002/96/EC), która wchodzi w życie 13 sierpnia 2005, tzw. "produkty oraz wyposażenie elektryczne i elektroniczne" nie mogą być traktowane jako śmieci komunalne, tak więc producenci tych produktów będą zobowiązani do odbierania ich w momencie gdy produkt jest wycofywany z użycia. MSI wypełni wymagania UE, przyjmując produkty (sprzedawane na terenie Unii Europejskiej) wycofywane z użycia. Produkty MSI będzie można zwracać w wyznaczonych punktach zbiorczych.

**Türkçe:** Çevreci özelliğiyle bilinen MSI dünyada çevreyi korumak için hatırlatır:Avrupa Birliği (AB) Kararnamesi Elektrik ve Elektronik Malzeme Atığı, 2002/96/EC Kararnamesi altında 13 Ağustos 2005 tarihinden itibaren geçerli olmak üzere, elektrikli ve elektronik malzemeler diğer atıklar gibi çöpe atılamayacak ve bu elektronik cihazların üreticileri, cihazların kullanım süreleri bittikten sonra ürünleri geri toplamakla yükümlü olacaktır. Avrupa Birliği'ne satılan MSI markalı ürünlerin kullanım süreleri bittiğinde MSI ürünlerin geri alınması isteği ile işbirliği içerisinde olacaktır. Ürünlerinizi yerel toplama noktalarına bırakabilirsiniz.

**Česky:** Záleží nám na ochraně životního prostředí - společnost MSI upozorňuje...Podle směrnice Evropské unie ("EU") o likvidaci elektrických a elektronických výrobků 2002/96/EC platné od 13. srpna 2005 je zakázáno likvidovat "elektrické a elektronické výrobky" v běžném komunálním odpadu a výrobci elektrických výrobků, na které se tato směrnice vztahuje, budou povinni odebírat takové výrobky zpět po skončení jejich životnosti. Společnost MSI splní požadavky na odebírání výrobků značky MSI, prodávaných v zemích EU, po skončení jejich životnosti. Tyto výrobky můžete odevzdat v místních sběrnách.

**Magyar:** Annak érdekében, hogy környezetünket megvédjük, illetve környezetvédként fellépve az MSI emlékezteti Önt, hogy ...Az Európai Unió („EU”) 2005. augusztus 13-án hatályba lépő, az elektromos és elektronikus berendezések hulladékairól szóló 2002/96/EK irányelve szerint az elektromos és elektronikus berendezések többé nem kezelhetőek lakossági hulladékként, és az ilyen elektronikus berendezések gyártói kötelessé válnak az ilyen termékek visszavételére azok hasznos élettartama végén. Az MSI betartja a termékvisszavétellel kapcsolatos követelményeket az MSI márkanev alatt az EU-n belül értékesített termékek esetében, azok élettartamának végén. Az ilyen termékeket a legközelebbi gyűjtőhelyre viheti.

**Italiano:** Per proteggere l'ambiente, MSI, da sempre amica della natura, ti ricorda che... In base alla Direttiva dell'Unione Europea (EU) sullo Smaltimento dei Materiali Elettrici ed Elettronici, Direttiva 2002/96/EC in vigore dal 13 Agosto 2005, prodotti appartenenti alla categoria dei Materiali Elettrici ed Elettronici non possono più essere eliminati come rifiuti municipali: i produttori di detti materiali saranno obbligati a ritirare ogni prodotto alla fine del suo ciclo di vita. MSI si adeguerà a tale Direttiva ritirando tutti i prodotti marchiati MSI che sono stati venduti all'interno dell'Unione Europea alla fine del loro ciclo di vita. È possibile portare i prodotti nel più vicino punto di raccolta.

**Русский:** Компания MSI предпринимает активные действия по защите окружающей среды, поэтому напоминаем вам, что... В соответствии с директивой Европейского Союза (ЕС) по предотвращению загрязнения окружающей среды использованным электрическим и электронным оборудованием (директива WEEE 2002/96/ЕС), вступающей в силу 13 августа 2005 года, изделия, относящиеся к электрическому и электронному оборудованию, не могут рассматриваться как бытовой мусор, поэтому производители вышеперечисленного электронного оборудования обязаны принимать его для переработки по окончании срока службы. MSI обязуется соблюдать требования по приему продукции, проданной под маркой MSI на территории ЕС, в переработку по окончании срока службы. Вы можете вернуть эти изделия в специализированные пункты приема.

**Español:** MSI como empresa comprometida con la protección del medio ambiente, recomienda: Bajo la directiva 2002/96/EC de la Unión Europea en materia de desechos y/o equipos electrónicos, con fecha de rigor desde el 13 de agosto de 2005, los productos clasificados como "eléctricos y equipos electrónicos" no pueden ser depositados en los contenedores habituales de su municipio, los fabricantes de equipos electrónicos, están obligados a hacerse cargo de dichos productos al termino de su período de vida. MSI estará comprometido con los términos de recogida de sus productos vendidos en la Unión Europea al final de su periodo de vida. Usted debe depositar estos productos en el punto limpio establecido por el ayuntamiento de su localidad o entregar a una empresa autorizada para la recogida de estos residuos.

**Nederlands:** Om het milieu te beschermen, wil MSI u eraan herinneren dat...De richtlijn van de Europese Unie (EU) met betrekking tot Vervuiling van Electriche en Electronische producten (2002/96/EC), die op 13 Augustus 2005 in zal gaan kunnen niet meer beschouwd worden als vervuiling. Fabrikanten van dit soort producten worden verplicht om producten retour te nemen aan het eind van hun levenscyclus. MSI zal overeenkomstig de richtlijn handelen voor de producten die de merknaam MSI dragen en verkocht zijn in de EU. Deze goederen kunnen geretourneerd worden op lokale inzamelingspunten

# Contents

<b>1. Getting Started</b>	<b>1</b>
1.1 Introduction	1
1.2 Features	1
1.3 Package Contents	1
1.4 System Requirements	2
<b>2. Installation</b>	<b>3</b>
2.1 DirectX (XP users only)	3
2.2 Connecting the DIGIVOX mini Hybrid	4
2.3 Driver Installation	5
2.4 Installation of the TV application	5
2.5 Installation of Media Converter	5
2.6 Setup of Media Center (MCE 2005)	6
2.7 Setup Media Center (Vista Premium Users).	9
<b>3. TotalMedia</b>	<b>11</b>
3.1 TotalMedia Interface Overview	11
3.2 Main Menu	12
3.3 TV Scanning	13
3.4 2 <sup>nd</sup> Tuner signal scanning	14
3.5 Total Media Interface Instruction	15
3.6 DVD Management	18
3.7 Pictur Management	19
3.8 Music Management	20
3.9 Radio Management	20
3.10 Video Management	21
3.11 Setting	22
<b>4. Medio Converter</b>	<b>28</b>
4.1 File Convert	28
4.2 You Tube Setting	29
<b>5. Remote Control</b>	<b>30</b>
5 Remote Control Overview	30

# 1. Getting Started

## 1.1 Introduction

Thank you for choosing the **DIGIVOX mini Hybrid** TV tuner and video capture unit. This product turns your PC into a powerful desktop multimedia system quickly and easily. Capture video and still images and experience real-time MPEG-2 recording. The **DIGIVOX mini Hybrid** provides you with a high quality TV viewing experience with true stereo sound!

## 1.2 Features

- Worldwide Analog TV reception from cable/air TV
- Watch free-to-air digital terrestrial TV and Listen Digital Radio (not DAB) on your PC or laptop.
- Real-time recording from Digital / Analog TV
- Supports TimeShifting and Schedule Recording function
- Additional AV/S-Video Input, be able to connect other video sources (such as DVD Player/VCD/VHS/Camcorder)
- Support HDTV
- Remote control function
- Windows Vista Certified

## 1.3 Package Contents

When removing the contents of the package, please inspect all items to ensure no damage was sustained during shipping. The following items should be included in the package:

- DIGIVOX mini Hybrid
- Software Package CD\*
- Quick Installation Guide
- Portable antenna for DVB-T\*\*
- Remote control
- AV/S-Video cable

\*\* The included antenna is only suitable for areas with a strong DVB-T signal. If you have reception problems, first try to move or reorient the antenna. Otherwise, you may need to use a stronger antenna for better reception.



## 1.4 System Requirements

To successfully use the **DIGIVOX mini Hybrid** solution, please ensure that your system meets the following requirements:

- Pentium® 4 or AMD Athlon 2.0 GHz or faster, 2.4GHz or faster recommended
- 512 MB RAM (minimum), 1G RAM recommended
- One available USB 2.0 port
- AC97 compatible sound card
- 2GB free HD space
- CD-ROM drive (for driver/software installation)
- DirectX 9.0c or higher installed
- Graphics card/chipset with full support for DirectX 9.0
- Microsoft XP SP3, XP MCE compatible or Vista installed

\* When using the DIGIVOX mini Hybrid with Windows Media Center , you must install a 3rd party MPEG - 2 encoder (such as Power DVD 6 or WinDVD6 or NVIDIA MPEG-2 decoder) in order to use the DIGIVOX mini Hybrid with Windows Media Center.

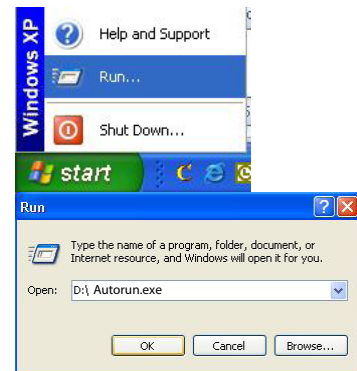
## 2. Installation

The following sections provide step-by-step instructions on installing and configuring the card, accessories and software.

Before installing your DIGIVOX mini Hybrid , please insert the installation CD and installation menu should load automatically.



If the Autostart program does not appear automatically when you insert your installation CD, start it manually by running the Autorun.exe file located on the installation CD, or by clicking the Start button, choosing Run..., and typing in D:\autorun.exe (if D: is your CD-ROM drive)



### 2.1 DirectX 9.0

DIGIVOX mini Hybrid requires to be supported by DirectX 9.0 or above. If the DriectX on your PC is lower then 9.0 version, please install DirectX 9.0 from autorun page.

Clicks on DirectX 9.0 and follow the prompts to install DirectX. After the installation is completed, shut down the computer.



## 2.2 Connecting the DIGIVOX mini Hybrid

Connect the RF dongle to the connection port on the DIGIVOX mini Hybrid connect your digital antenna to the RF dongle.



Now plug the DIGIVOX mini Hybrid unit into an open USB 2.0 port on your PC.

## 2.3 Driver Installation



From the installation menu, please click on Driver Installation to install DIGIVOX mini Hybrid driver. Follow the prompts to complete installation of the driver.

## 2.4 Installation of the TV application



Install the TV software by clicking “Arcsoft Total Media”. Just follow the prompts to install the software

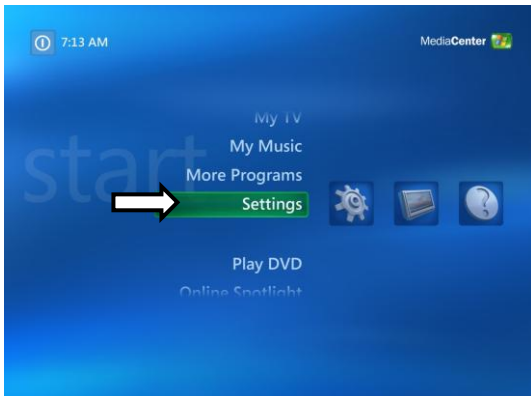
## 2.5 Installation of Media Converter



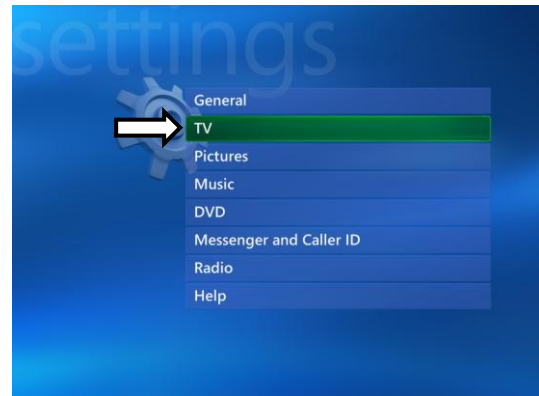
Click on Media Converter to install the software. Just follow the prompts to complete installation

## 2.6 Setup of Media Center (MCE 2005)

Double-click the **My TV** icon on your desktop to start Media Center.



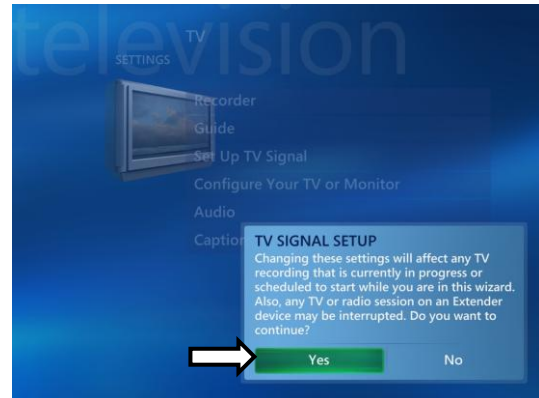
Click on **Settings**.



Now click on **TV**.



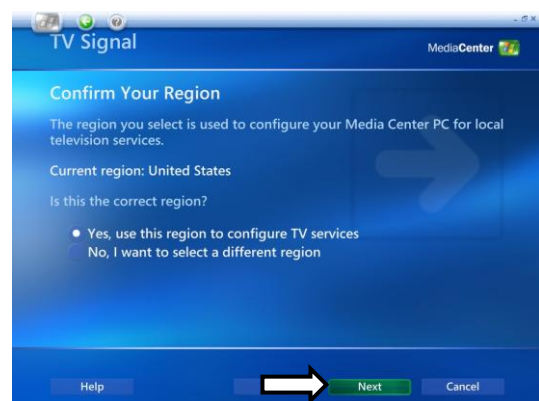
Click on **Set Up TV Signal**.



A warning message will appear. Click **Yes**.



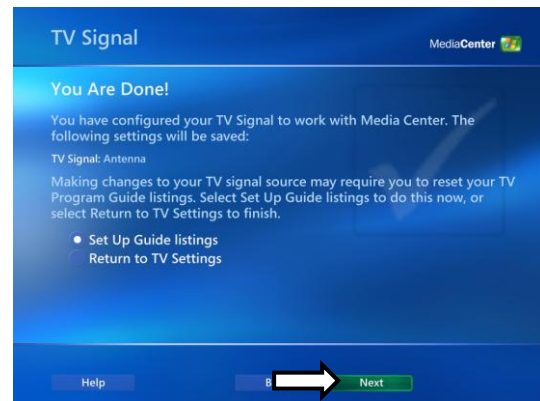
Click **Next**.



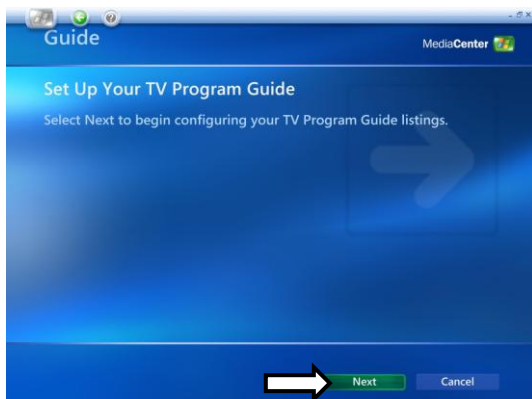
Select **Yes, use this region to configure TV services** if your current region is displayed. If not, select **No, I want to select a different region**. Click **Next**.



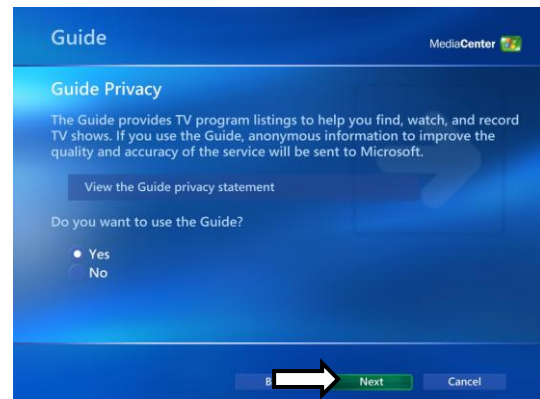
If you chose to select your region, select your region from the list and click **Next**.



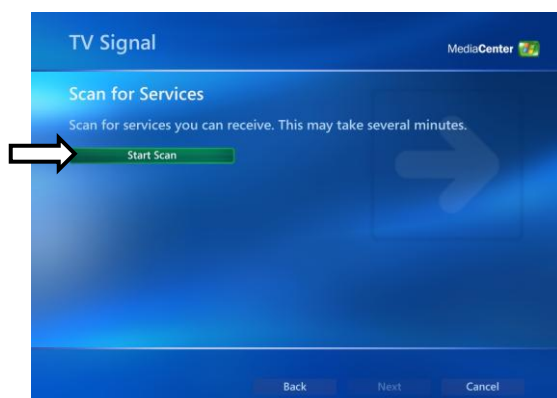
Click the circle next to **Set Up Guide Settings** and click **Next**.



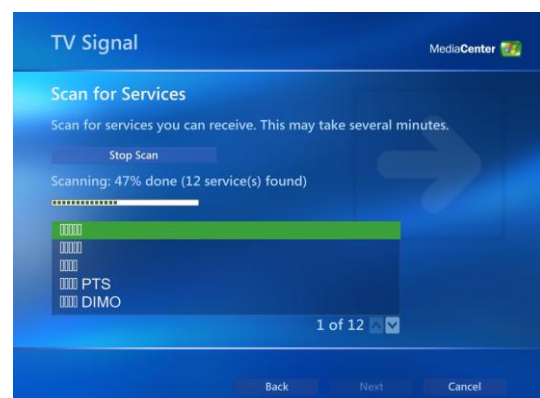
Click on **Next**.



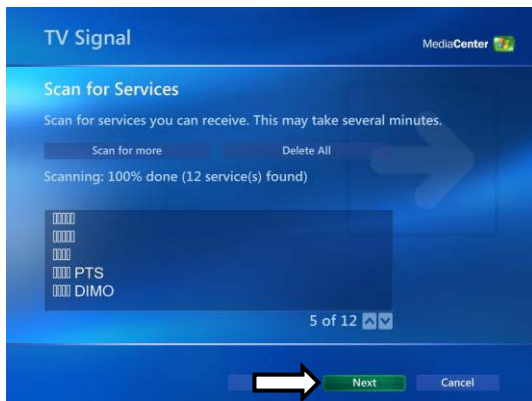
If you want to use the Media Center Guide, select **Yes** and follow the onscreen prompts. If not, select **No**. Click **Next**.



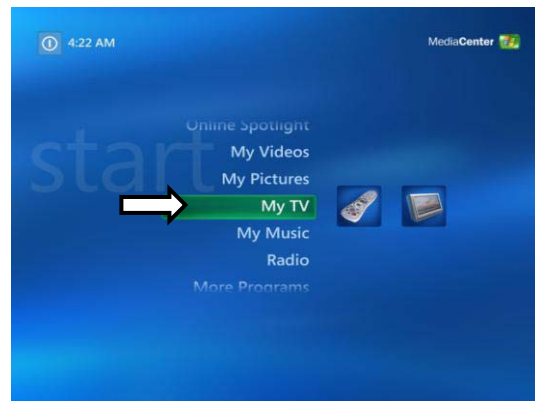
Click **Start Scan** to begin a channel scan.



Windows MCE will now scan for available channels in your area. This may take a few minutes.



When the scan is finished, click **Next**



To watch TV, click on **My TV** from the main menu.



Click on **Live TV** and you can now start watching TV! For more details on how to use Media Center, consult your Windows MCE user manual or online help.

- ! In order to use the DIGIVOX A/D III with MCE 2005, you **must** install an MCE Certified MPEG-2 decoder (also known as a DVD decoder) in order to watch and record TV in Windows MCE. This DVD decoder is not included on the installation CD. To install a DVD decoder, you can install software such as CyberLink PowerDVD, InterVideo XPack, Sonic CinePlayer, nVidia DVD Decoder or other such product that includes a DVD decoder.
- ! If you are unable to scan any channels or configure both tuners, make sure you have updated your copy of Windows MCE through Update Rollup 2 (KB900325) and through all available updates on Windows Update (including optional updates).

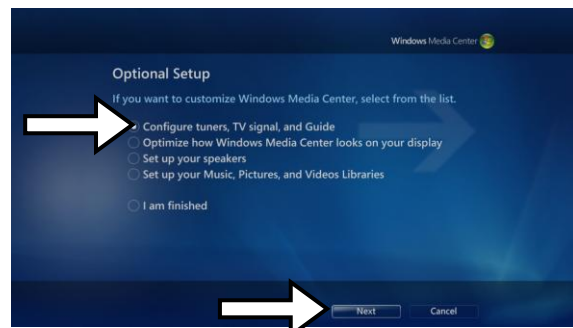
## 2.7 Setup Media Center (Vista Premium Users)



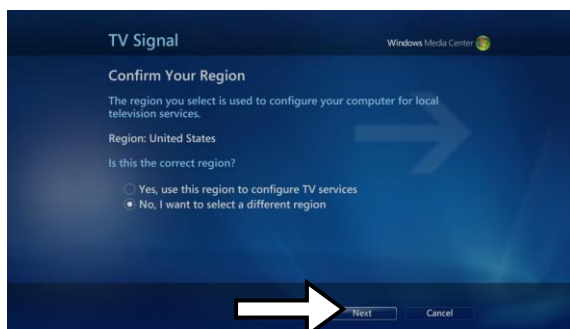
1. Click on the **Media Center** icon from the Start Menu or the QuickStart bar.
2. From the welcome screen, select **Custom setup** and click **OK**.



3. Click **Next** and follow the onscreen instructions to set up Media Center.



4. When you reach the **Optional Setup** screen, select **Configure tuner, TV signal, and Guide** and click **Next**.



5. If you are in the currently displayed region, select **Yes, use this region to configure TV services** and click **Next**. Otherwise, click **No, I want to select a different region**, click **Next**, and choose your region from the list that appears then click **Next**.

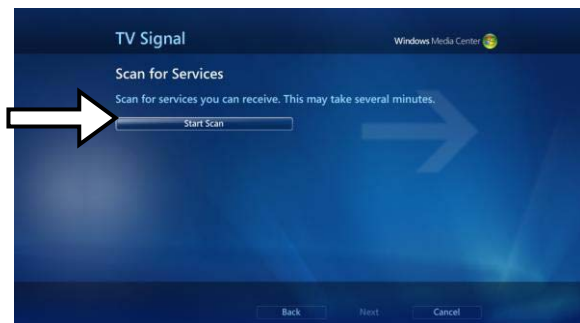


6. Here, select your TV signal source. Select **Antenna** and click **Next**.





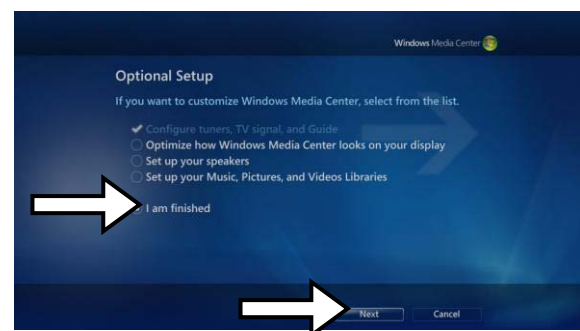
7. Here, choose **Digital Terrestrial** and click **Next**.



8. Click **Start Scan** and let the channel scan finish, then click **Next** after it finishes.



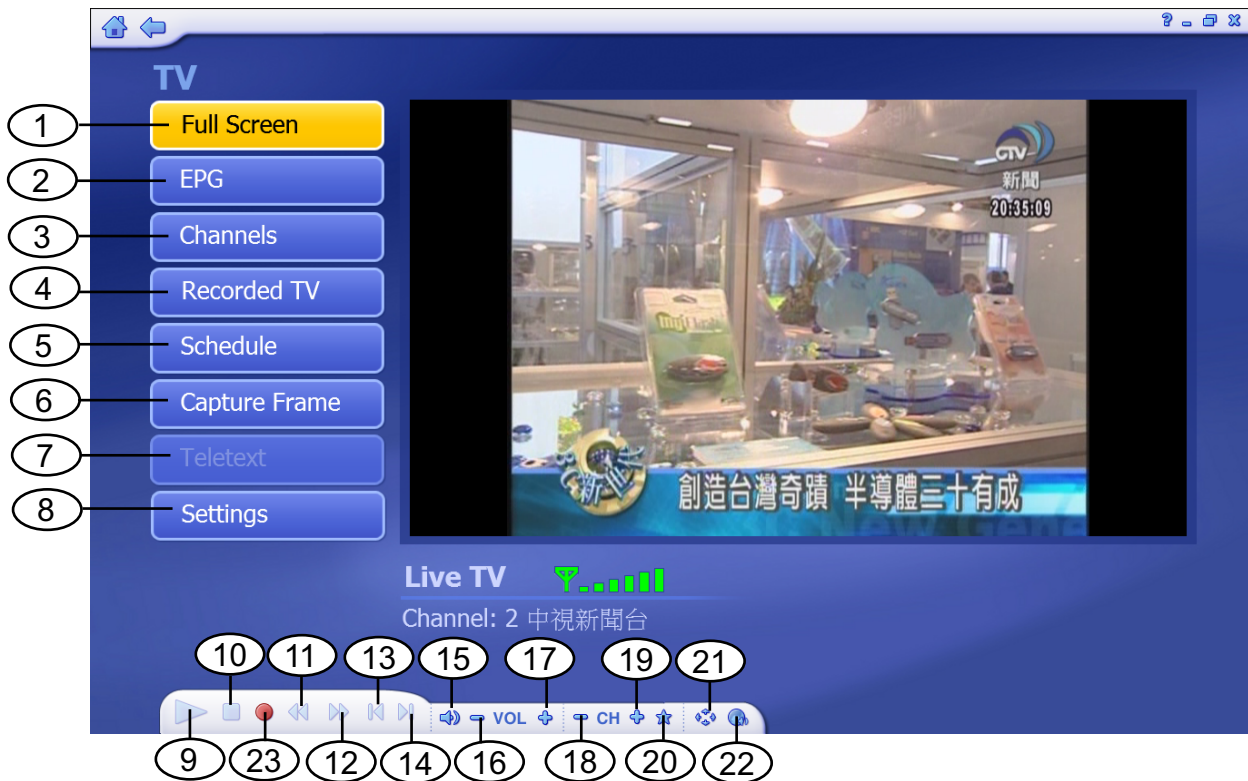
9. Here, select **Yes** if you want to use Media Center's Guide feature, or **No** if not. Click **Next**.



10. This completes setup of your TV card with Media Center. You can continue to set up the rest of the options, or you can select **I am finished** and **Next** to finish setup.

### 3.Total Media

#### 3.1 Total Media Interface Overview



- |                  |                       |
|------------------|-----------------------|
| 1. Full Screen   | 12. Forward           |
| 2. EPG           | 13. Skip to beginning |
| 3. Channels      | 14. Skip to end       |
| 4. Recorded TV   | 15. Volume Bar        |
| 5. Schedule      | 16. Volume Down       |
| 6. Capture Frame | 17. Volume Up         |
| 7. Teletext      | 18. Channel Down      |
| 8. Settings      | 19. Channel Up        |
| 9. Playback      | 20. My Favorite       |
| 10. Stop         | 21. Aspect Ratio      |
| 11. Backward     | 22. MTS               |
|                  | 23. RECORD            |

### 3.2 Main Menu

Total Media is a Media Center Like software. You can not only watch Digital TV but a Picture and Video Management tool. The below software instruction will guide you to learn the magic of Total Media 3.5



3.2-1 Choose Region



### 3.2-2 Select Device

Please choose “AF9035 Analog Capture Filter” for scanning ATV signal

Please choose “AF9015 BDA Filter” for scanning DTV signal

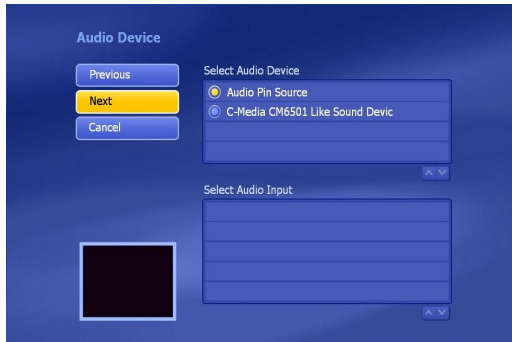


## 3.3 TV Scanning

### Analog TV

#### 3.3-1 Select Audio Device

Choose "Audio Pin Source"



#### 3.3-2 Choose "CableTV" or "AntennaTV" for Analog TV signal scanning



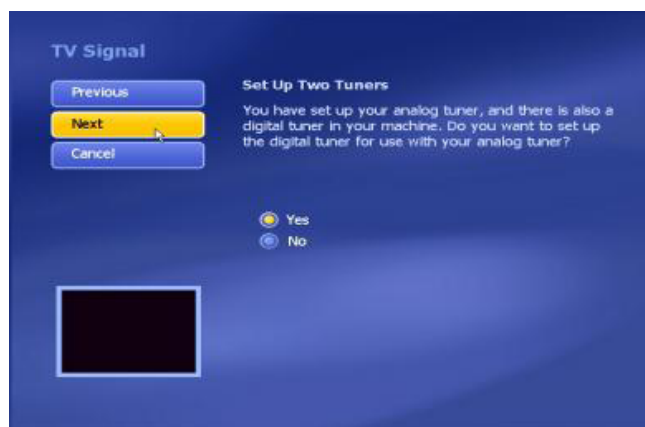
#### 3.3-3 Press "Start" to scan channels



### 3.4 2<sup>nd</sup> Tuner signal scanning

#### 3.4-1 Choose “Yes” for 2<sup>nd</sup> tuner scanning

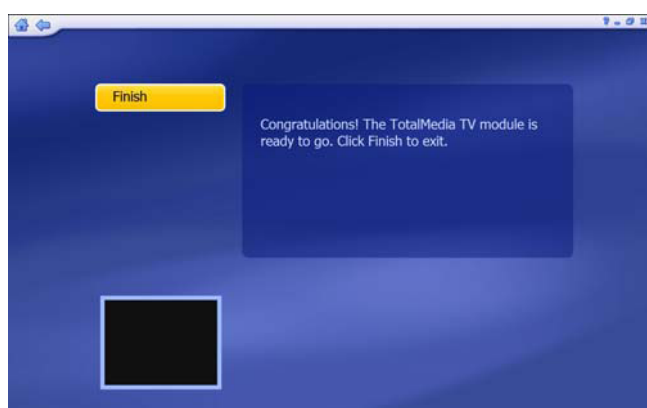
For 2<sup>nd</sup> tuner scanning, you can directly click “Yes” to scan another type of TV signal. If you don’t want to scan out the channel this time, you may set up the signal next time.



#### 3.4-2 Click “Start” to scan Total Media channels. All scanned channels will be shown on channel list. When scan is completed, click “Next” to the next step.



#### 3.4-3 Please click “Finish” to finish the Total Media channel scanning.



### 3.5 Total Media Interface Instruction

#### 3.5-1 Full Screen Click “ Full Screen” to enlarge TV on full monitor



#### 3.5-2 EPG Information On EPG information page, you can check TV program name list on Total Media channels for next few days



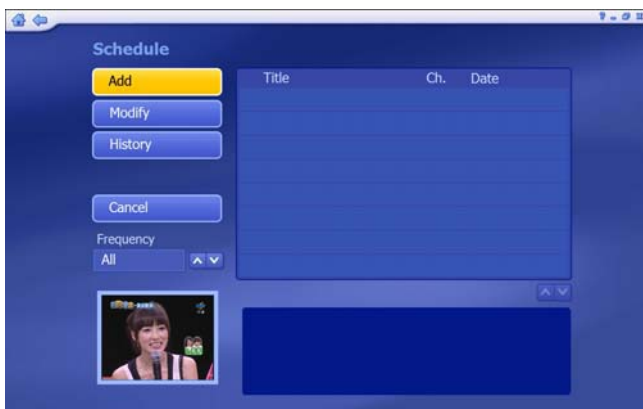
#### 3.5-3 Channel Information When click “Channels” , All Total Media Channels will be on Channel list





### 3.5-4 Recorded TV

All recorded TV will be saved on your hard drive, and you can directly watch all recorded TV from “Recorded TV” option. You can also run “Video Setting” from this page. (Please refer to 3.6 for “Video Setting” Information)



### 3.5-5 Schedule

When click “Schedule”, the schedule recording list will be shown. You can choose “Add” to set new recording schedule.



### 3.5-5.1 Add

You can set a new Total Media channel, frequency and time table for schedule recording.



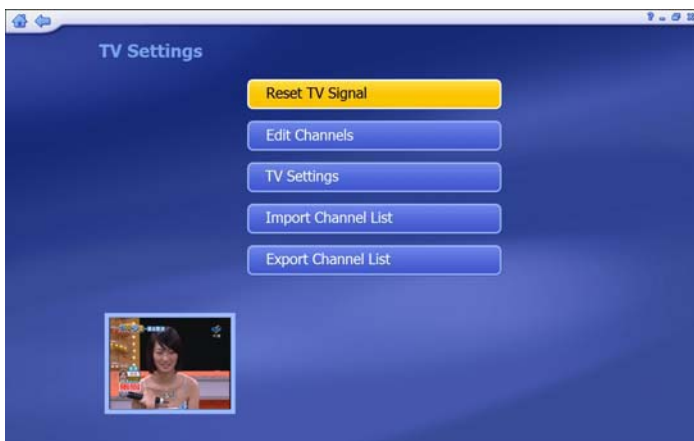
### 3.5-5.2 Capture Frame

When “Capture Frame” is clicked, the frame will be captured and on the left up of screen, a “Frame Captured” mark will be shown.



### 3.5-6 Teletext

Teletext service is only supported on specific region. “Teletext” option can only be enable when the region provide teletext service.



### 3.5-7 Setting

On “setting” option, you can Reset TV Signal / Edit Channel / TV settings / Import or Export Channel list.



### 3.5-8 Recording Bar

On Recording Bar, you can record TV program / Play recorded programs / Adjust volume / Change Channel / Show favorite list / Adjust aspect ratio / adjust MTS setting



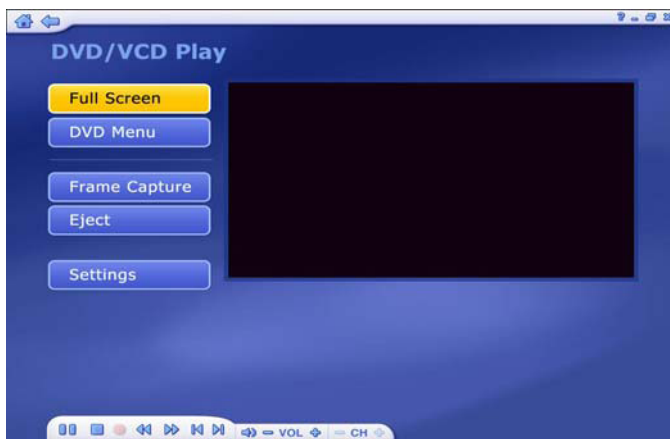
### 3.6 DVD Management



3.6-1

Total Media DVD/VCD play is an easy operating DVD/VCD playback system.

You can not only play DVD or VCD movie but also capture frame from the playing DVD by only a simple click.



3.6-2

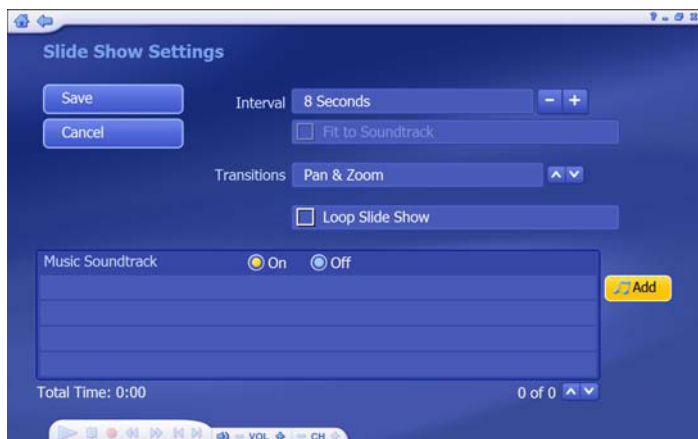
If you do not insert any DVD or VCD disc on your DVD-ROM or CD-ROM drive. Total Media will ask you to insert a valid disc for DVD or VCD playback

### 3.7 Picture Management



3.7-1

Please select your picture folder. Click "Play" to play slide show. For slide show setting,



3.7-2

On Slide Show Setting, you can adjust the "interval" / "Transition" and add Music Soundtrack

### 3.8 Music Management



3.8-1

Please add your favorite music to "My Playlists". You can listen to music by playing songs from "My Playlists".

You may also use "Rip Music CD" and "Burn to Disc" to create your music CD

### 3.9 Radio Management

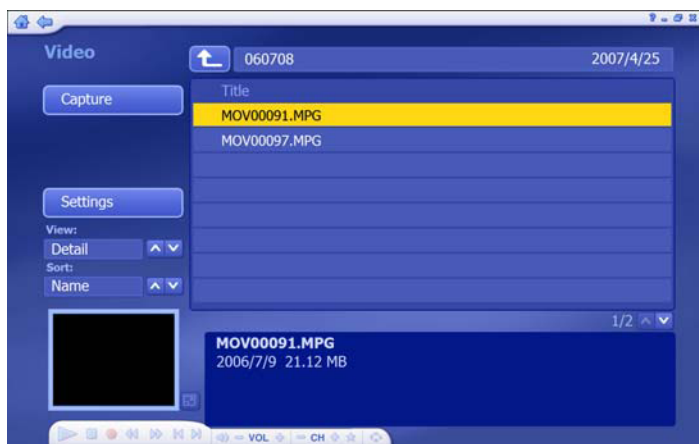


3.9-1

Please add your favorite radio or auto scan to listen it.

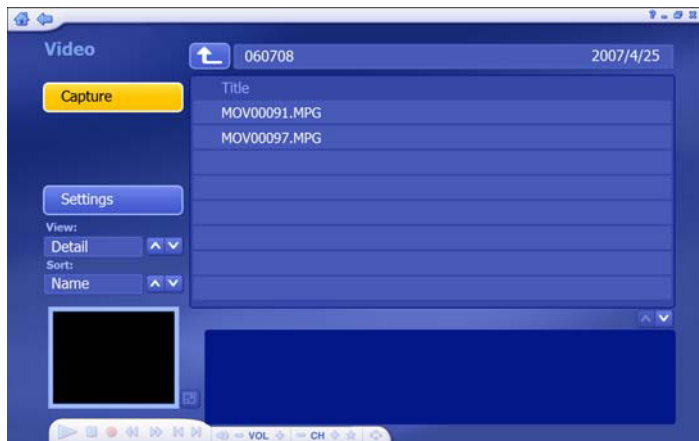
you also can record radio audio to your PC or notebook.

### 3.10 Video Management



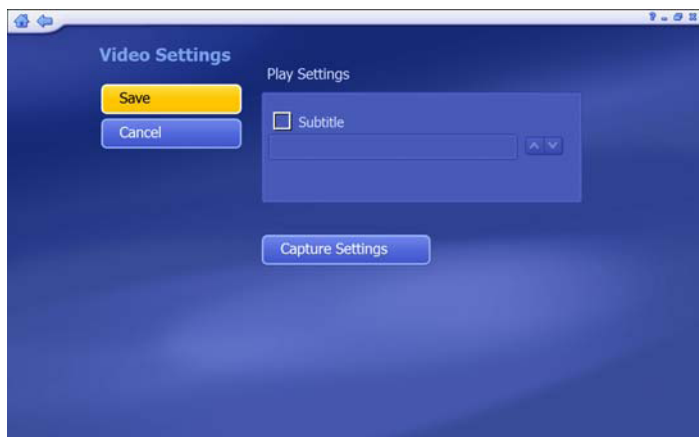
#### 3.10-1 Video Information

To preview, rename or edit a video file, begin by selecting the video. If the file is not in the current directory, use the navigation control at the top of the screen to go to the folder containing the file.



#### 3.10-2 Capture

If capture device is connected, you can capture video clips from your DV / Camcorder / VCR



#### 3.10-3 Video Setting

Please refer to 3.9.3 for Video Setting information

## 3.11 Setting



### 3.11-1 General Setting



From General Setting, you can set up the “Printer” / “Frame Storage” and “Video Recording Storage” location / Display setting on hardware acceleration and 3D effect.



On “About TotalMedia”, you can see the TM version.

For online registration and version update, you can upgrade the TM to latest version by one button clicking.

## 3.11-2 TV Setting

### 3.11-2.1 Choose the TV Signal



### 3.11-2.2 Choose the TV Signal



### 3.11-2.3 Select Device

Please choose "AF9035 Analog Capture Filter" for scanning ATV signal

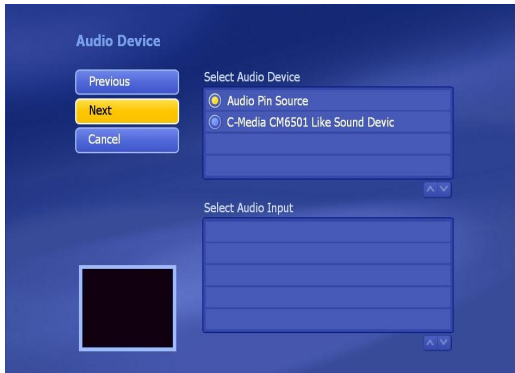
Please choose "AF 9015 BDA Filter" for scanning DTV signal



### 3.11-3 Analog TV Scanning

#### 3.11-3.1 Select Audio Device

Choose “Audio Pin Source”



#### 3.11-3.2 Choose “CableTV” or “AntennaTV” for Analog TV signal scanning



#### 3.11-3.3 Press “Start” to scan channels



### 3.11-4 2<sup>nd</sup> Tuner signal scanning

#### 3.11-4.1 Choose “Yes” for 2<sup>nd</sup> tuner scanning

For 2<sup>nd</sup> tuner scanning, you can directly click “Yes” to scan another type of TV signal. If you don’t want to scan out the channel this time, you may set up the signal next time.



#### 3.11-4.2 Scan Channel

Click “Start” to rescan DVB-T channels. When the scan is completed, click “Next” to finish the channel rescan.

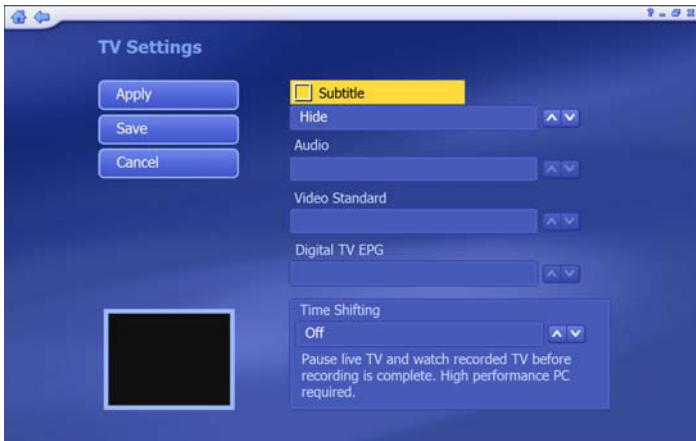


#### 3.11-4.3 Edit channel

It is editable or removable on channel information. You can directly change the channel name from “Edit Channel” option.







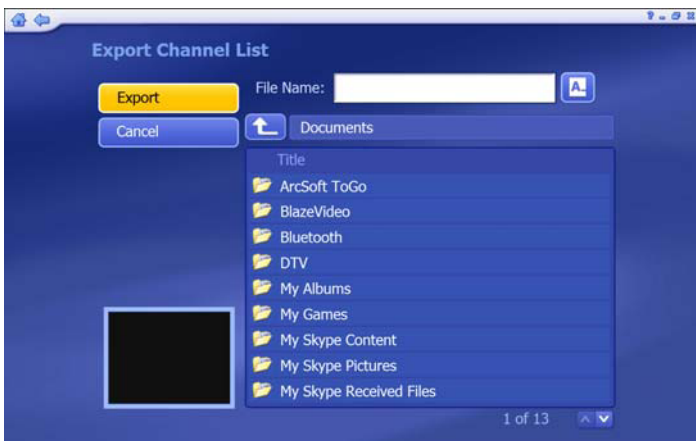
### 3.11-4.4 TV Settings

In some regions, Subtitle service is provided by broadcaster. Right click "Subtitle" to support subtitling.



### 3.11-4.5 Import Channel List

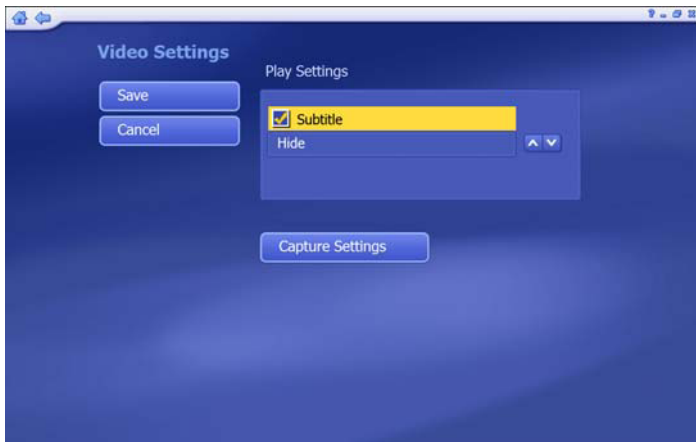
If you would like to import any Channel list, just choose the correct route and click "Import" to import new channel list.



### 3.11-4.6 Export Channel List

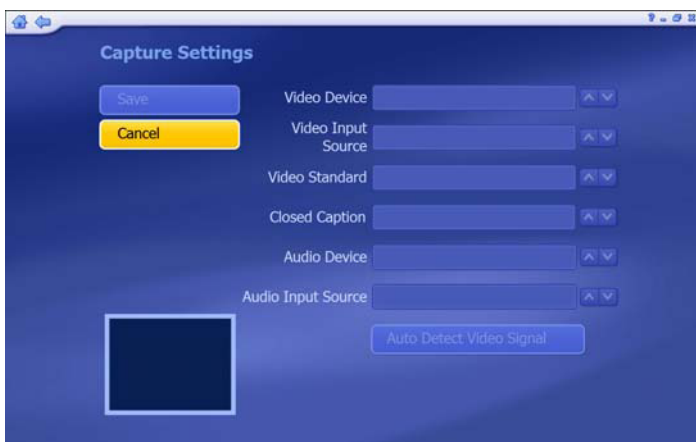
If you would like to save the channel list, just choose the correct route and click "Export" to export new channel list

### 3.11-5 Video Setting



#### 3.11-5.1 Video Setting

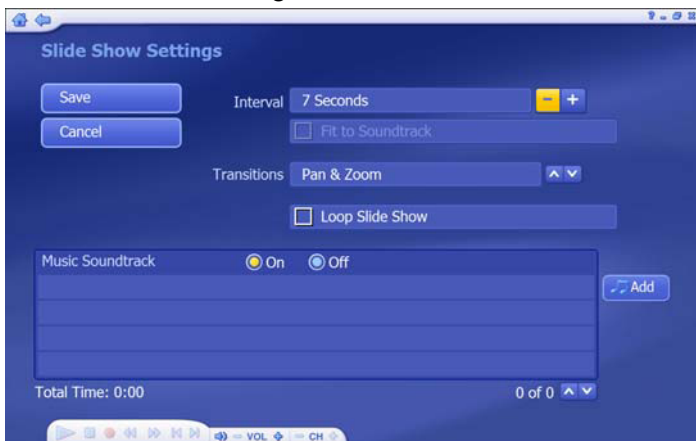
On regions supporting Subtitle service, you can enable “Subtitle” option for recorded TV program. (Note: For not support subtitle service region, Subtitle will not be able to enabled)



#### 3.11-5.2 Capture Setting

If capture device is detected, you can find the device information and adjust the setting from “Capture Setting” option.

### 3.11-6 Picture Setting

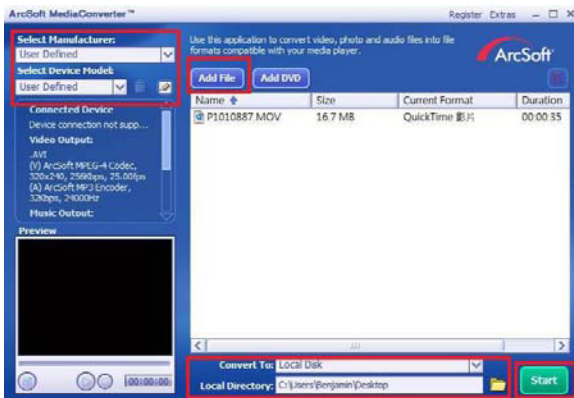


On Picture Setting, you can adjust the slide show parameters to fit in your request. You can also add your favorite music to create better slide show for your pictures.

## 4 Media Converter Introduction

### 4.1 File Convert

Launch “Arcsoft Media Converter” for file format convert



Select “Add File” to add the file you would like to do the format transfer.

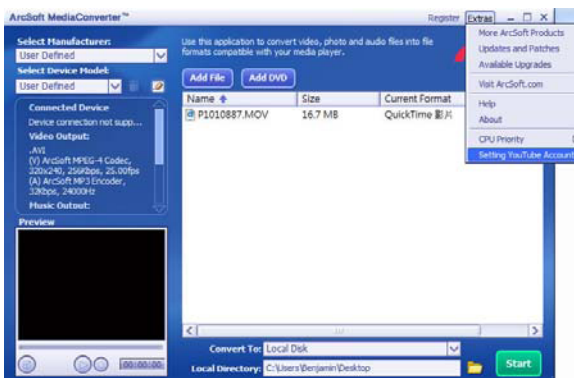
You can set up the file format from left hand side

Select the folder you would like to save the file  
Click “Start” to complete file convert.

Note: the conversion

### 4.2 “You Tube” Setting

Media Converter can direct transfer your file into “You Tube” format and automatically upload to “You Tube” website.



#### 4.2.1 “You Tube” account setting

From “Extra” on the right up side function column, you can choose “Setting You Tube Account” to complete the “You Tube” account

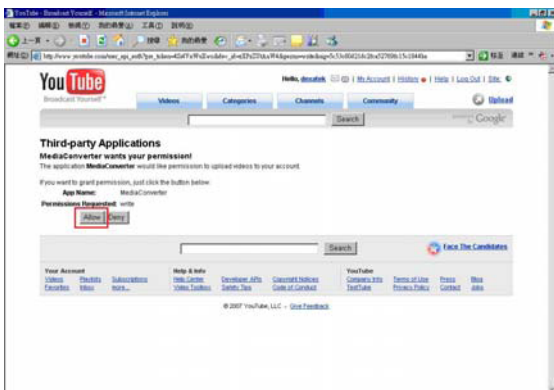


#### 4.2.2 Step 1

Please log in to your “You Tube” account on “You Tube” website.

If you never apply account before, please apply it from there.

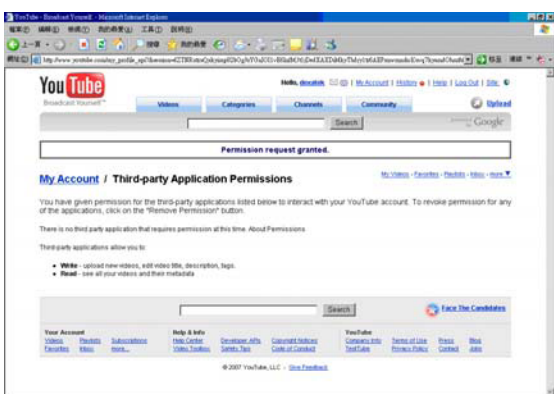
Note: please activate your account before you set up your account on Media Converter.



#### 4.2.2 Get Authorization

After setting your account, please click “Get Authorization”.

Media Converter will guide you to “You Tube” website. Please press “Allow” to continue the setting.



#### 4.2.3 Permission

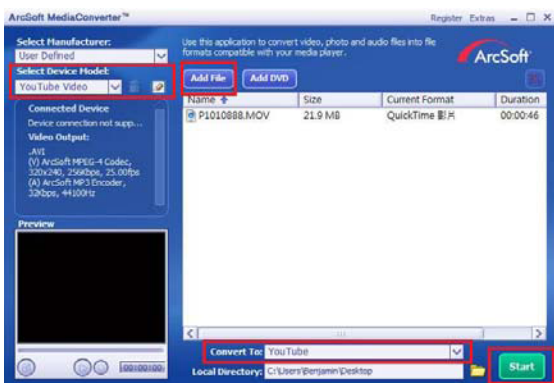
When “Allow” button is clicked, “You Tube” website will show you the permission page.

In this step, you have finished the setting on “You Tube” website.



#### 4.2.4 Save

Please click “Save” on Media Converter to complete the setting.



#### 4.2.5 “You Tube” video uploading

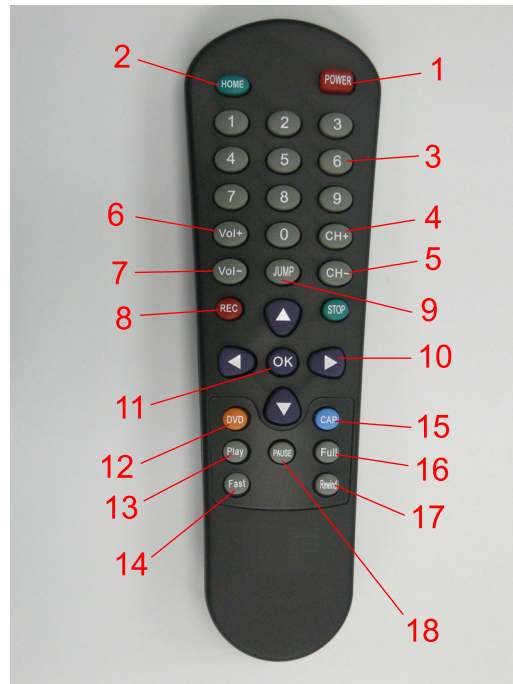
Select “You Tube Videos” on “Select Device Model” on left hand side

Select “You Tube” on “Convert To” on bottom side

Add files you would like to upload to “You Tube”

Press “Start” to start uploading

### 4.1 Remote Control



- |    |                            |     |                       |
|----|----------------------------|-----|-----------------------|
| 1. | POWER (on/off)             | 10. | Right, Left, Up, Down |
| 2. | HOME (return to main page) | 11. | Enter                 |
| 3. | NUMBER 0 to 9              | 12. | Jump to DVD           |
| 4. | Channel Up                 | 13. | Play                  |
| 5. | Channel Down               | 14. | Fast forward          |
| 6. | Volume Up                  | 15. | Frame capture         |
| 7. | Volume Down                | 16. | Full screen           |
| 8. | Record                     | 17. | Fast backward         |
| 9. | Channel return             | 18. | Pause                 |

Note: Remote control can only support TotalMedia, not MCE