

Digi Vox Ultimate HD

User Manual

Copyright and Trademark Notice

©2007 by MSI. All rights reserved.

Information in this document is subject to change without notice. No part of this document may be reproduced or transmitted in any form or by any means, electronic or mechanical without prior written permission of MSI.

MSI makes no representation or warranties with respect to the contents hereof and specifically disclaims any implied warranties of merchantability or fitness for any particular purpose. MSI reserves the right to revise this manual and to make changes in its content without obligation to notify any person or organization of such revision or change. In no event shall MSI be liable to you or any third party for any consequential, incidental, direct, indirect, special, punitive, or other damages (including without limitation, damages for loss of profits, interruptions, loss of information, pecuniary loss, etc.), even if MSI has been advised of the possibility of such damages arising from any defect or error in this manual or product.

Windows® is a trademark of Microsoft Corporation. All other brand names used in this document are registered trademarks of their respective companies.

COPYRIGHT NOTICES

The material in this document is the intellectual property of **MICRO-STAR INTERNATIONAL**. We take every care in the preparation of this document, but no guarantee is given as to the correctness of its contents. Our products are under continual improvement and we reserve the right to make changes without notice.

TRADEMARKS

All trademarks are the properties of their respective owners.

MICRO-STAR INTERNATIONAL Statement

All contents are subject to change without notice.

One year guarantee is for the device only. Warranty for accessories expired within seven days of purchase date.



廢電池請回收

For better environmental protection, waste batteries should be collected separately for recycling or special disposal.

Contents

1. Getting Started	1
1.1 Introduction	1
1.2 Features	1
1.3 Package Contents	1
1.4 System Requirements	2
2. Installation	3
2.1 DirectX (XP users only)	3
2.2 Connecting the Digi Vox Ultimate HD	4
2.3 Driver Installation	5
2.4 Installation of the TV application	5
2.5 Setup of Media Center (MCE 2005)	6
2.6 Setup Media Center (Vista Premium Users).	9
3. TotalMedia	11
3.1 TotalMedia Interface Overview	11
3.2 Main Menu	12
3.3 Total Media Setting	12
3.4 Total Media Interface Instruction	13
3.5 DVD Management	16
3.6 Picture Management	17
3.7 Music Management	18
3.8 Video Management	19
3.9 Setting	20
4. Remote Control	24
4.1 Remote Control Overview	24

1. Getting Started

1.1 Introduction

Thank you for choosing the **Digi Vox Ultimate HD** TV tuner and video capture unit. This product turns your PC into a powerful desktop multimedia system quickly and easily. Capture video and still images and experience real-time MPEG-2 recording. The **Digi Vox Ultimate HD** provides you with a high quality TV viewing experience with true stereo sound!

1.2 Features

- Antenna ready DVB-T Silicon Tuner
- Watch TV in a resizable window or full-screen
- Listen to DVB radio
- Teletext and EPG support
- TimeShifting functions
- Record digital TV perfectly to MPEG-2
- Scheduled recording and one-touch recording from EPG
- Capture still images
- Ultra-portable design you can take anywhere
- Windows Vista Premium Certified

1.3 Package Contents

When removing the contents of the package, please inspect all items to ensure no damage was sustained during shipping. The following items should be included in the package:

- Digi Vox Ultimate HD
- Software Package CD
- Quick Installation Guide
- Portable antenna for DVB-T*
- Remote control

* The included antenna is only suitable for areas with a strong DVB-T signal. If you have reception problems, first try to move or reorient the antenna. Otherwise, you may need to use a stronger antenna for better reception.

1.4 System Requirements

To successfully use the **Digi Vox Ultimate HD** solution, please ensure that your system meets the following requirements:

- Pentium® 4 or AMD Athlon 2.0 GHz or faster, 2.4GHz or faster recommended
- 256 MB RAM (minimum), 512 MB RAM recommended
- One available USB 2.0 port
- AC97 compatible sound card
- 1GB free HD space
- CD-ROM drive (for driver/software installation)
- DirectX 9.0c or higher installed
- Graphics card/chipset with full support for DirectX 9.0 or above; Windows XP MCE 2005 certified card/chipset required if using Windows XP MCE 2005
- Microsoft XP SP2, XP MCE 2005*, Vista or Windows 7 installed

* When using the Digi Vox Ultimate HD with Windows Media Center in Windows XP MCE 2005, you must install a 3rd party MPEG-2 decoder (such as Power DVD 6 or WinDVD6 or NVIDIA MPEG-2 decoder) in order to use the Digi Vox Ultimate HD with Windows Media Center.

2. Installation

The following sections provide step-by-step instructions on installing and configuring the card, accessories and software.

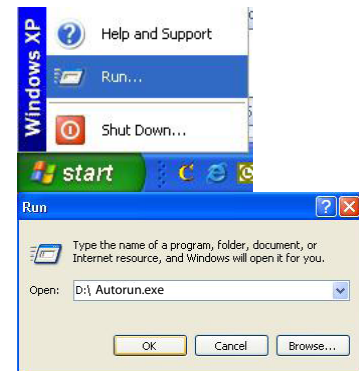
Before installing your Digi Vox Ultimate HD, please insert the installation CD and installation menu should load automatically.

Digi Vox Ultimate HD

- DirectX 9.0
- Driver Installation
- Arcsoft TotalMedia
- MCE Encode Installation
- Media Converter
- Manual
- Exit



If the Autostart program does not appear automatically when you insert your installation CD, start it manually by running the Autorun.exe file located on the installation CD, or by clicking the Start button, choosing Run..., and typing in D:\autorun.exe (if D: is your CD-ROM drive)



2.1 DirectX 9.0

Digi Vox Ultimate HD requires to be supported by DirectX 9.0 or above. If the DriectX on your PC is lower then 9.0 version, please install DirectX 9.0 from autorun page.

Clicks on DirectX 9.0 and follow the prompts to install DirectX. After the installation is completed, shut down the computer.

Digi Vox Ultimate HD

- ➡ ■ DirectX 9.0
- Driver Installation
- Arcsoft TotalMedia
- MCE Encode Installation
- Media Converter
- Manual
- Exit



2.2 Connecting the Digi Vox Ultimate HD

Connect the RF dongle to the connection port on the Digi Vox Ultimate HD. Connect your digital antenna to the RF dongle.



Now plug the Digi Vox Ultimate HD unit into an open USB 2.0 port on your PC.

2.3 Driver Installation



From the installation menu, please click on Driver Installation to install Digi Vox Ultimate HD driver. Follow the prompts to complete installation of the driver.

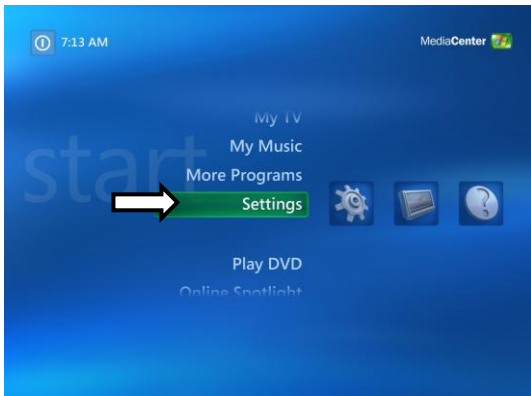
2.4 Installation of the TV application



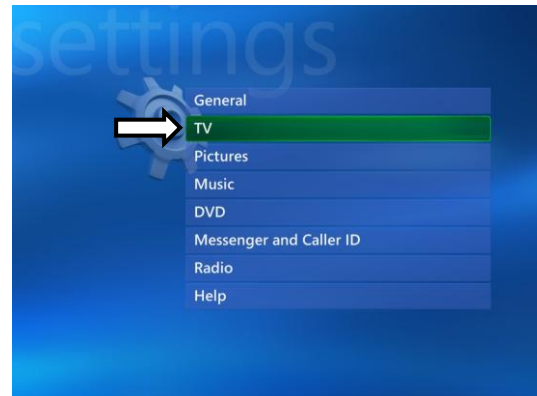
Install the TV software by clicking “Arcsoft Total Media”. Just follow the prompts to install the software

2.5 Setup of Media Center (MCE 2005)

Double-click the **My TV** icon on your desktop to start Media Center.



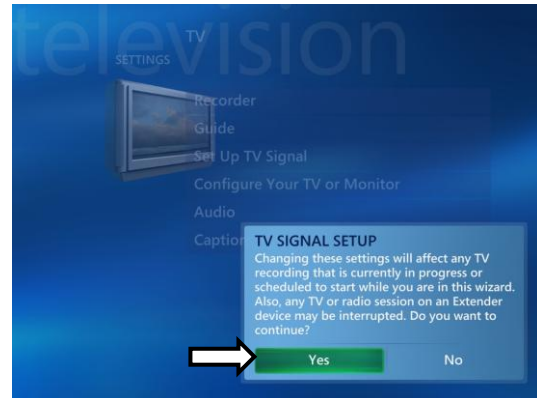
Click on **Settings**.



Now click on **TV**.



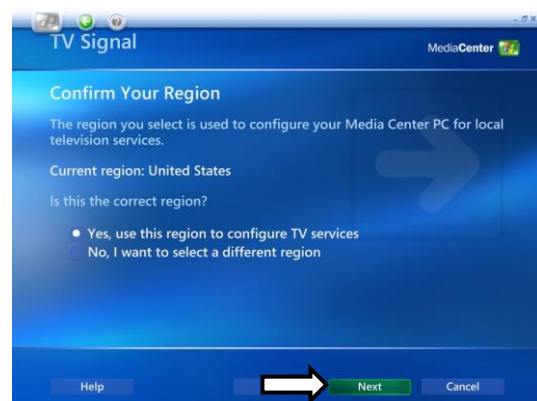
Click on **Set Up TV Signal**.



A warning message will appear. Click **Yes**.



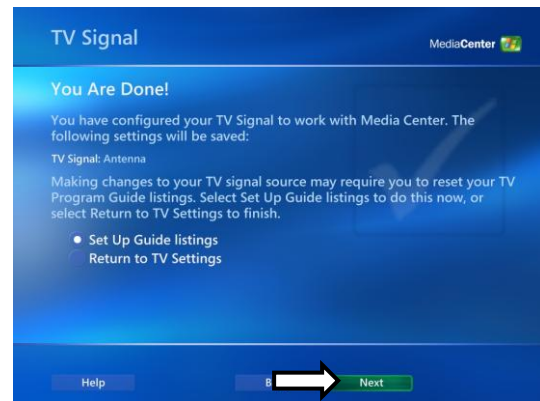
Click **Next**.



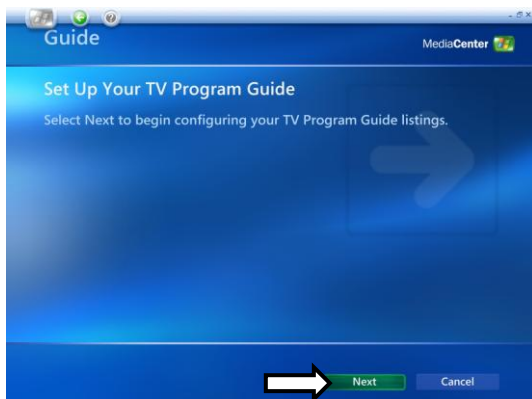
Select **Yes, use this region to configure TV services** if your current region is displayed. If not, select **No, I want to select a different region**. Click **Next**.



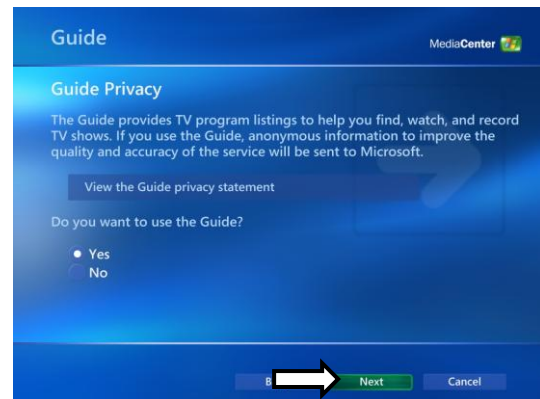
If you chose to select your region, select your region from the list and click **Next**.



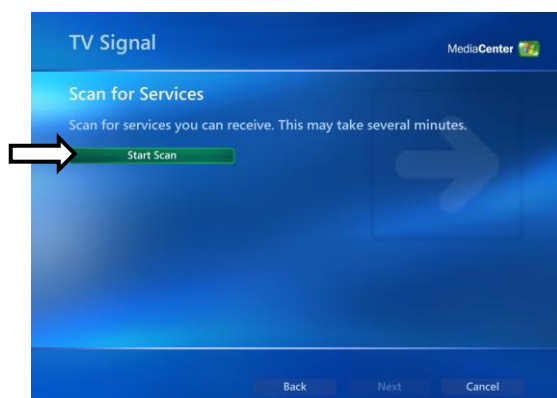
Click the circle next to **Set Up Guide Settings** and click **Next**.



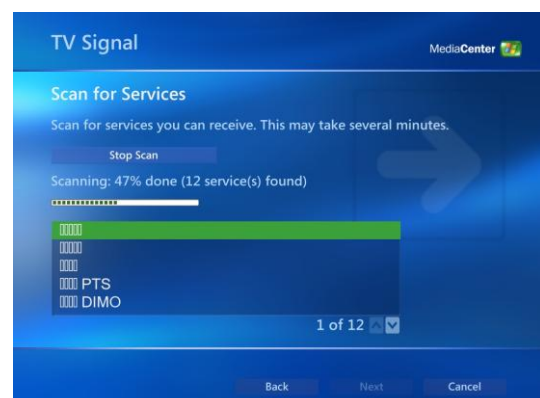
Click on **Next**.



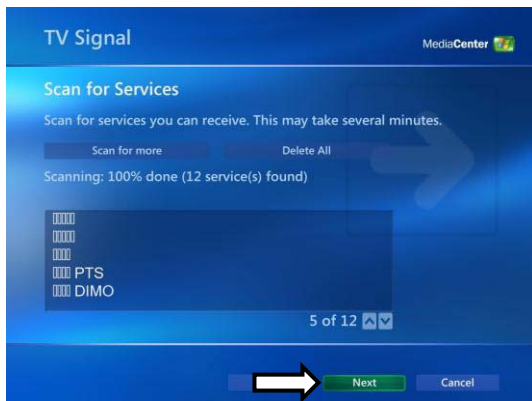
If you want to use the Media Center Guide, select **Yes** and follow the onscreen prompts. If not, select **No**. Click **Next**.



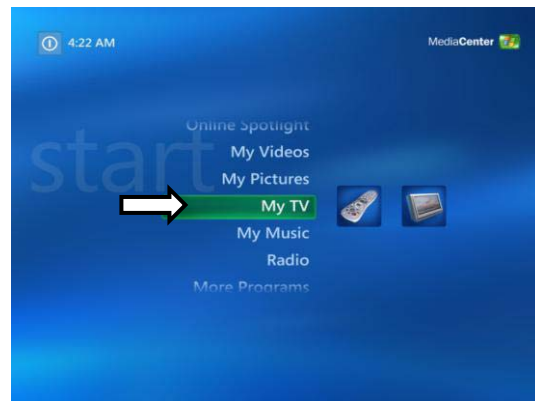
Click **Start Scan** to begin a channel scan.



Windows MCE will now scan for available channels in your area. This may take a few minutes.



When the scan is finished, click **Next**



To watch TV, click on **My TV** from the main menu.



Click on **Live TV** and you can now start watching TV! For more details on how to use Media Center, consult your Windows MCE user manual or online help.

- ! In order to use the Digi Vox Ultimate HD with MCE 2005, you **must** install an MCE Certified MPEG-2 decoder (also known as a DVD decoder) in order to watch and record TV in Windows MCE. This DVD decoder is not included on the installation CD. To install a DVD decoder, you can install software such as CyberLink PowerDVD, InterVideo XPack, Sonic CinePlayer, nVidia DVD Decoder or other such product that includes a DVD decoder.
- ! If you are unable to scan any channels or configure both tuners, make sure you have updated your copy of Windows MCE through Update Rollup 2 (KB900325) and through all available updates on Windows Update (including optional updates).

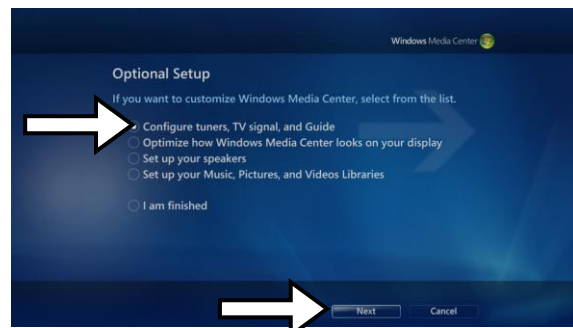
2.6 Setup Media Center (Vista Premium Users)



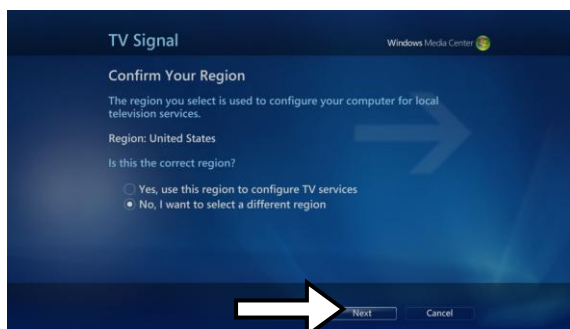
1. Click on the **Media Center** icon from the Start Menu or the QuickStart bar.
2. From the welcome screen, select **Custom setup** and click **OK**.



3. Click **Next** and follow the onscreen instructions to set up Media Center.



4. When you reach the **Optional Setup** screen, select **Configure tuner, TV signal, and Guide** and click **Next**.



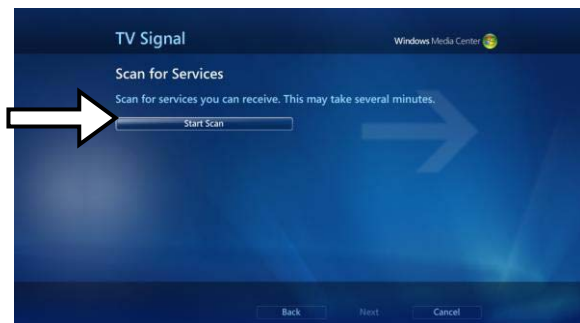
5. If you are in the currently displayed region, select **Yes, use this region to configure TV services** and click **Next**. Otherwise, click **No, I want to select a different region**, click **Next**, and choose your region from the list that appears then click **Next**.



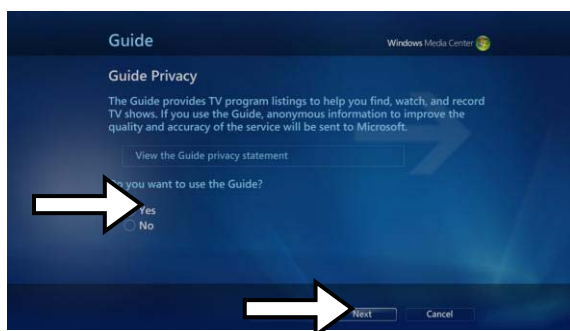
6. Here, select your TV signal source. Select **Antenna** and click **Next**.



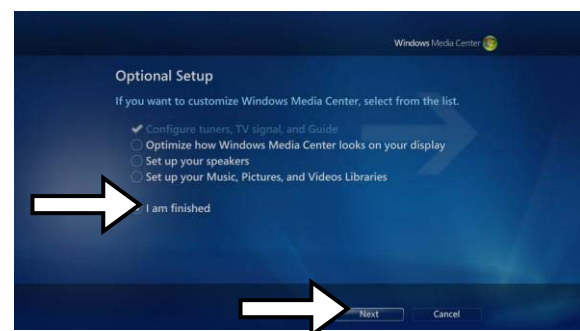
7. Here, choose **Digital Terrestrial** and click **Next**.



8. Click **Start Scan** and let the channel scan finish, then click **Next** after it finishes.



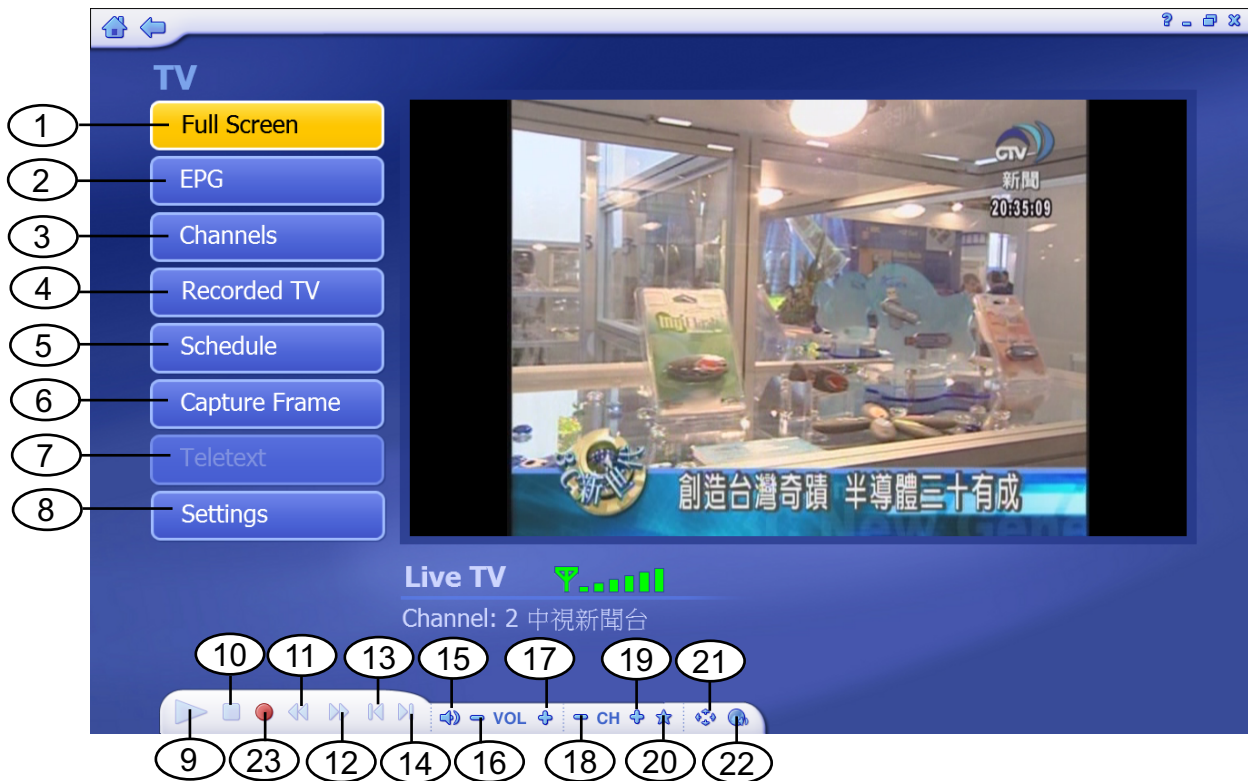
9. Here, select **Yes** if you want to use Media Center's Guide feature, or **No** if not. Click **Next**.



10. This completes setup of your TV card with Media Center. You can continue to set up the rest of the options, or you can select **I am finished** and **Next** to finish setup.

3.Total Media

3.1 Total Media Interface Overview



- | | |
|------------------|-----------------------|
| 1. Full Screen | 12. Forward |
| 2. EPG | 13. Skip to beginning |
| 3. Channels | 14. Skip to end |
| 4. Recorded TV | 15. Volume Bar |
| 5. Schedule | 16. Volume Down |
| 6. Capture Frame | 17. Volume Up |
| 7. Teletext | 18. Channel Down |
| 8. Settings | 19. Channel Up |
| 9. Playback | 20. My Favorite |
| 10. Stop | 21. Aspect Ratio |
| 11. Backward | 22. MTS |
| | 23. RECORD |

3.2 Main Menu

Total Media is a Media Center Like software. You can not only watch Digital TV but a Picture and Video Management tool. The below software instruction will guide you to learn the magic of Total Media 3.



3.3 Total Media setting

Before you start to watch Totalmedia, you have to follow instruction to scan down all available channels in your region.



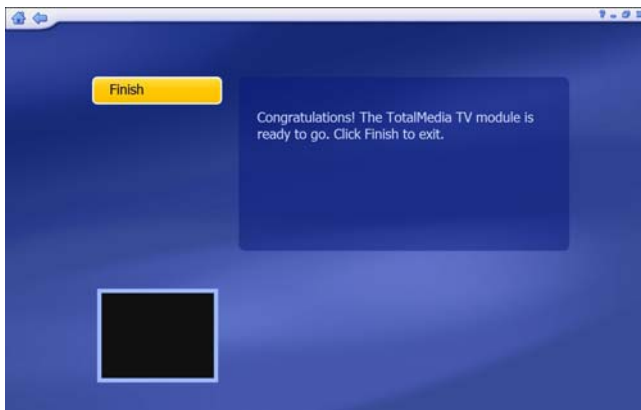
3.3.1

On the TV Signal Setting, please select your country and click “Next”



3.3.2

Click “Start” to scan Total Media channels. All scanned channels will be shown on channel list. When scan is completed, click “Next” to the next step.



3.3.3

Please click “Finish” to finish the Total Media channel scanning.

3.4 Total Media Interface Instruction



3.4.1 Full Screen

Click “ Full Screen” to enlarge TV on full monitor



3.4.2 EPG Information

On EPG information page, you can check TV program name list on Total Media channels for next few days



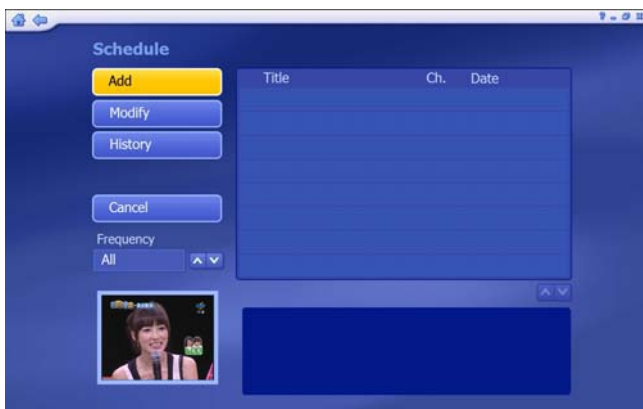
3.4.3 Channel Information

When click “Channels” , All Total Media Channels will be on Channel list



3.4.4 Recorded TV

All recorded TV will be saved on your hard drive, and you can directly watch all recorded TV from “Recorded TV” option. You can also run “Video Setting” from this page. (Please refer to 3.6 for “Video Setting” Information)



3.4.5 Schedule

When click “Schedule”, the schedule recording list will be shown. You can choose “Add” to set new recording schedule.



3.4.5.1 Add

You can set a new Total Media channel, frequency and time table for schedule recording.



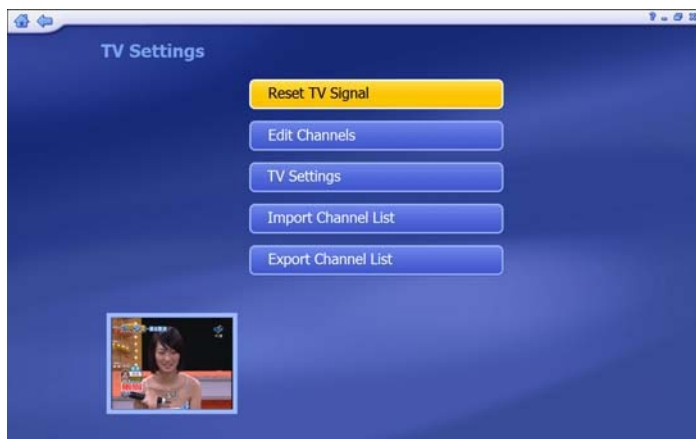
3.4.5.2 Capture Frame

When “Capture Frame” is clicked, the frame will be captured and on the left up of screen, a “Frame Captured” mark will be shown.



3.4.6 Teletext

Teletext service is only supported on specific region. "Teletext" option can only be enable when the region provide teletext service.



3.4.7 Setting

On "setting" option, you can Reset TV Signal / Edit Channel / TV settings / Import or Export Channel list.



3.4.8 Recording Bar

On Recording Bar, you can record TV program / Play recorded programs / Adjust volume / Change Channel / Show favorite list / Adjust aspect ratio / adjust MTS setting

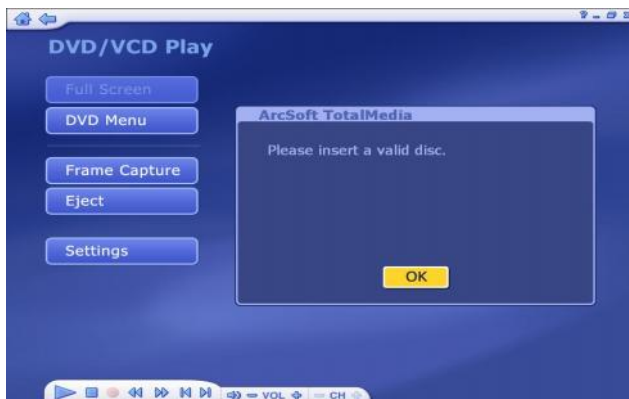
3.5 DVD Management



3.5.1

Total Media DVD/VCD play is an easy operating DVD/VCD playback system.

You can not only play DVD or VCD movie but also capture frame from the playing DVD by only a simple click.



3.5.2

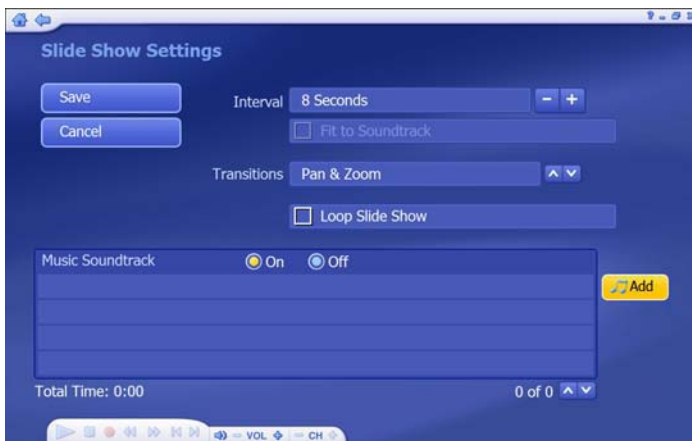
If you do not insert any DVD or VCD disc on your DVD-ROM or CD-ROM drive. Total Media will ask you to insert a valid disc for DVD or VCD playback

3.6 Picture Management



3.6.1

Please select your picture folder. Click "Play" to play slide show. For slide show setting,



3.6.2

On Slide Show Setting, you can adjust the "interval" / "Transition" and add Music Soundtrack

3.7 Music Management



3.7.1

Please add your favorite music to “My Playlists”. You can listen to music by playing songs from “My Playlists”.

You may also use “Rip Music CD” and “Burn to Disc” to create your music CD

3.8 Video Management



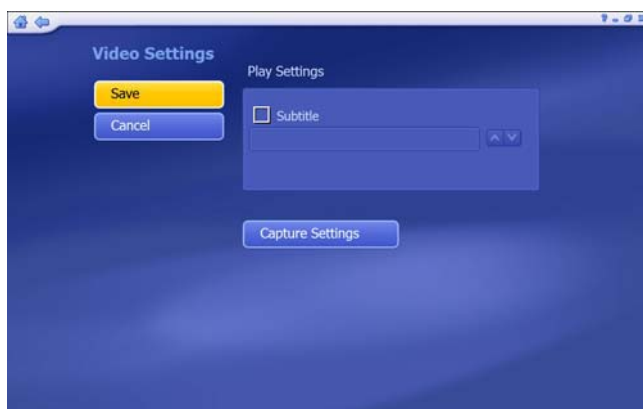
3.8.1 Video Information

To preview, rename or edit a video file, begin by selecting the video. If the file is not in the current directory, use the navigation control at the top of the screen to go to the folder containing the file.



3.8.2 Capture

If capture device is connected, you can capture video clips from your DV / Camcorder / VCR



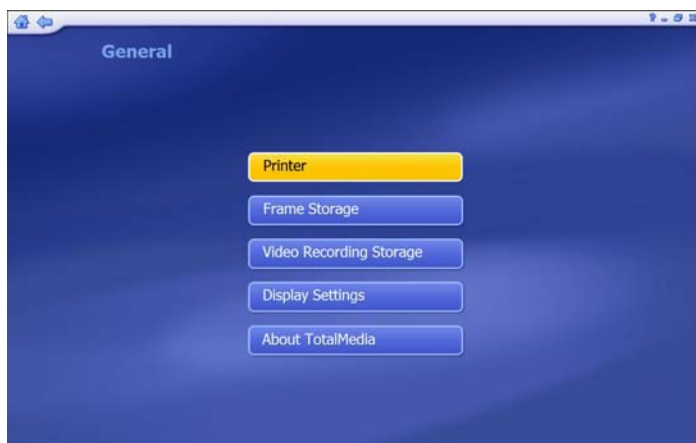
3.8.3 Video Setting

Please refer to 3.7.5 for Video Setting information

3.9 Setting



3.9.1 General Setting



From General Setting, you can set up the “Printer” / “Frame Storage” and “Video Recording Storage” location / Display setting on hardware acceleration and 3D effect.



On “About Total Media”, you can see the TM version. For online registration and version update, you can upgrade the TM to latest version by one button clicking.

3.9.2 TV Setting



3.9.2.1.1 Reset TV signal

Reset your region and click “Next” to rescan channels



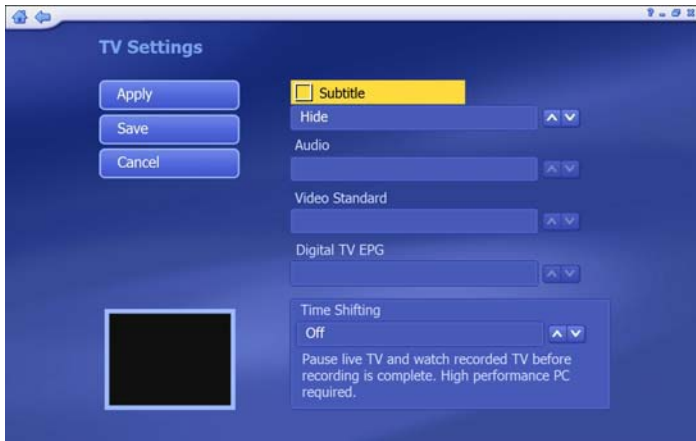
3.9.2.1.2 Scan Channel

Click “Start” to rescan DVB-T channels. When the scan is completed, click “Next” to finish the channel rescan.



3.9.2.2 Edit Channel

It is editable or removable on channel information. You can directly change the channel name from “Edit Channel” option.



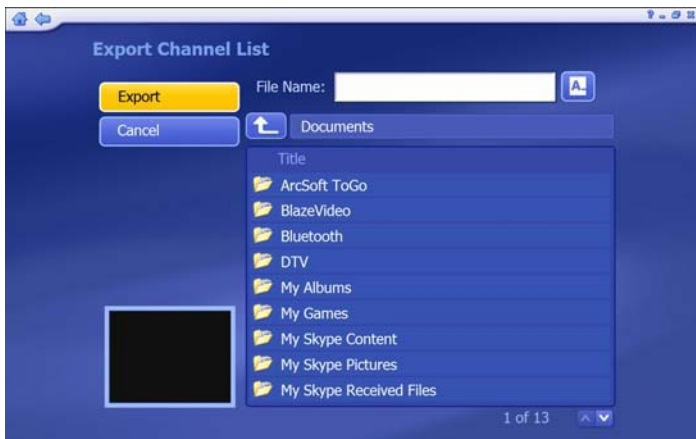
3.9.2.3 TV Settings

In some regions, Subtitle service is provided by broadcaster. Right click "Subtitle" to support subtitling.



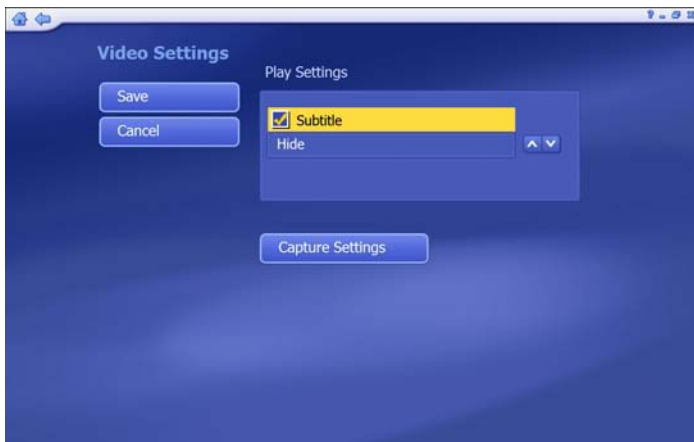
3.9.2.4 Import Channel List

If you would like to import any Channel list, just choose the correct route and click "Import" to import new channel list.



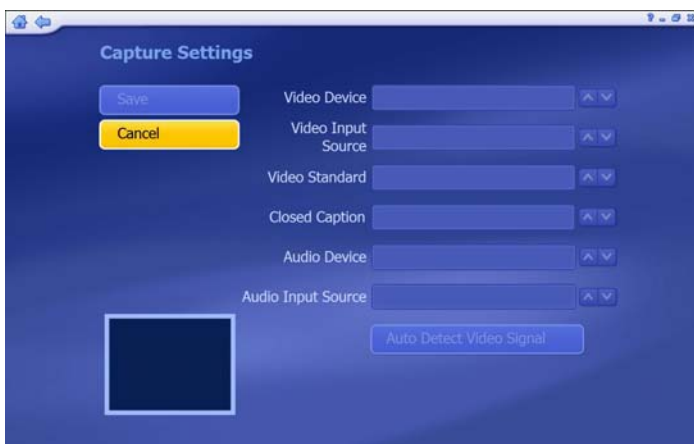
3.9.2.5 Export Channel List

If you would like to save the channel list, just choose the correct route and click "Export" to export new channel list



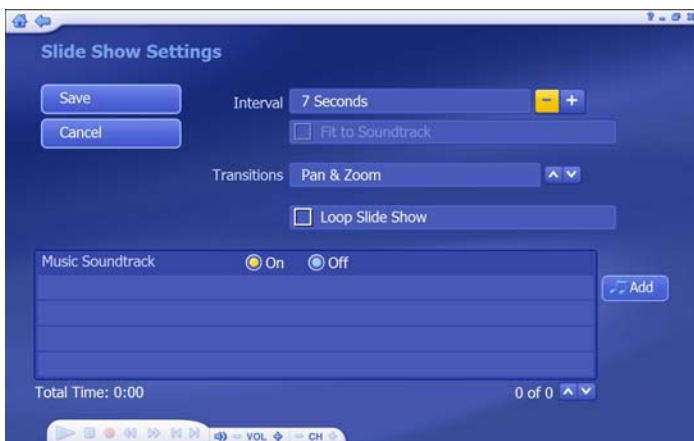
3.9.3.1 Video Setting

On regions supporting Subtitle service, you can enable “Subtitle” option for recorded TV program. (Note: For not support subtitle service region, Subtitle will not be able to enabled)



3.9.3.2 Capture Setting

If capture device is detected, you can find the device information and adjust the setting from “Capture Setting” option.



3.9.4 Picture Setting

On Picture Setting, you can adjust the slide show parameters to fit in your request. You can also add your favorite music to create better slide show for your pictures.

4.1 Remote Control



1. POWER
2. MUTE
3. FAVORITE
4. NUMBER 0 to 9
5. Volume Up
6. Volume Down
7. ENTER
8. Channel Up
9. Channel Down

Note: Remote control can only support TotalMedia, not MCE