

# PLAYON!HD2

## Playon!HD2 User Manual



# Table of Contents

Click on the section's title for  
a faster navigation.

1 User Information .....	3
1.1 Caution .....	3
2 Product Introduction .....	5
2.1 Product Overview .....	5
2.2 Package Contents .....	6
2.3 Connection .....	7
2.4 Front Panel .....	11
2.5 Side Panel .....	12
2.6 Back Panel .....	12
2.7 First Time Usage .....	13
2.8 Remote Control .....	16
3 Main Functions .....	18
3.1 Setup Menu .....	18
3.2 Movie Library .....	31
3.3 Photo Library .....	35
3.4 Music Library .....	38
3.5 File Manager .....	40
3.6 Playlist management .....	45
3.7 Copy Function .....	46
3.8 Internet Media .....	48
3.9 BT Download .....	49
3.10 Web Management .....	50
3.11 Jukebox .....	55
3.12 SAMBA Server and Client .....	58
3.13 FTP Server .....	59
4 Upgrading the Firmware .....	62
5 Appendixes .....	63
5.1 Specifications .....	63
5.2 Frequently Asked Questions .....	64
6 Copyrights and Trademarks .....	66
7 Warranty .....	67
8 GPL Statement .....	67

# 1 User Information

## 1.1 Caution

This player is designed and manufactured with safety in mind. In order to safely and effectively use this player, please read the following before usage.

### 1.1.1 Usage cautions

User should not modify this player. If commercial hard disk is being used, the environmental temperature should be within +5 ~ +35.

### 1.1.2 Power

The player's power voltage: DC 12V.

When using this player, please connect the supplied AC adapter or AC adapter cable to the player's power jack. When placing the adapter cable, make sure it will not get damaged or be subject to pressure. To reduce the risk of electric shock, unplug the adapter first before cleaning it. Never connect the adapter to the player in a humid or dusty area. Do not replace the adapter or cable's wire or connector.

### 1.1.3 Radio interference/compatibility

- If not properly shielded, almost all electronic devices will get radio interference. Under some conditions, your player might get interference.
- The design of this player complies with CE standards, and adheres to the following rules:

- (1) This player may not cause harmful interference
- (2) This player may receive some interference, that may cause undesired operation.

### 1.1.4 Repair

If the player has a problem, you should take it to an appointed repair center and let the specialists do the repair. Never repair the player yourself as you might damage the player or endanger yourself or your data.

### 1.1.5 Disposing of the player

When you dispose of the player, be sure to dispose of it appropriately. Some countries may regulate disposal of electrical devices, please consult with your local authority.

## 1.1.6 Hard disk cautions

The player uses an internal hard disk for data storage. Under normal circumstance, format or repair is not required.

You should carefully read the < Frequently Asked Questions > chapter, and check our website for latest information before formatting the hard disk.

- Physical impact may create bad sector in the hard disk, you can use CHKDSK to fix the problem.
- All data stored in the player may be lost due to physical impact, electrical shock, power lost, HDD format etc.
- It is recommended that you defragment after a long period of usage.
- Regularly backup the data in the hard disk so that it can be recovered in the event of data corruption or loss. Our company takes no responsibility for loss of data stored on the hard disk.

## 1.1.7 Others

When using this player, please do not let the player come into contact with water or other liquid, if water is accidentally spilled on the player, please use a dry cloth to absorb the spillage.

Electronic products are vulnerable, when using please avoid the following:

- Do not let the player come into contact with water or other liquid.
- Do not disassemble the player, repair the player or change the design of the player, any damage done will not be included in the repair policy.
- Do not press the buttons of the player too hard.
- Avoid hitting the player with hard object, avoid shaking the player, and stay away from magnetic fields.

During electrostatic discharge or when exposed to a strong electromagnetic field, the product will malfunction. If this happens, then unplug the power cable and the product will return to normal performance next time it is powered on.

## 2 Product Introduction

### 2.1 Product Overview

Thank you for purchasing an AC Ryan Playon!HD 2 Media Player. Store, stream and play your entire media collection in Full HD. The ultimate in home entertainment, this player has the following functionality:

#### Network Feature

- A/V streaming/transmission via Ethernet(10M/100M/1000M) & Wi-Fi dongle (802.11b/g/n, optional)
- A/V streaming via UPnP Media Server
- File sharing via Samba server
- FTP Server
- Internet Radio (SHOUTcast)
- BT download
- Video podcast

#### Media Library

- Quick-Search, search files by keywords.
- A powerful search engine, allows you to browse multimedia files with ease.
- Movie Jukebox
- A great feature that allows you to view your Movie files by using Movie Photo thumbnails.

#### Movie Playback

- Fast forward/rewind
- View subtitle
- Supports major audio formats (1080p HD video decoding)
- Subtitle control: color/offset/size
- Movie format: ASF/AVI/BD-ISO/DAT/DVD-ISO/FLV/IFO/MPG/MP4/M2TS/MKV/ MOV/ M4V/TP/TX/TRP/WMV/VOB/RM/RMVB

#### Music Playback

- Fast forward/rewind
- Shuffle
- Repeat
- Music format: AAC/LC-AAC/HE-AAC/MP2/MP3/FLAC/WAV/MS-ADPCM/WMA (DRM and Advance Profile or lossless not supported)/OGG Vorbis/PCM/LPCM/ COOK/RA-Lossless

## Photo Viewing

- You can view photos in slide show mode with background music and/or transition effects.
- Zoom in/out, Rotate
- Photo format: JPEG/HD JPEG/BMP/GIF/TIF/PNG

## USB 3.0 & 2.0 Support

- USB 3.0 DEVICE port (for computer connection, compatible to USB 2.0 )
- 2x USB 2.0 HOST port (for USB storage devices)

## Card reader

- SD/MMC

## File Copy

- Supports copying & moving files from external USB drive, Internal Hard drive and Network.

**Note:** All the information contained in this manual was correct at the time of publication. However, as our engineers are always updating and improving the product, your device's software may have a slightly different appearance or modified functionality

## 2.2 Package Contents

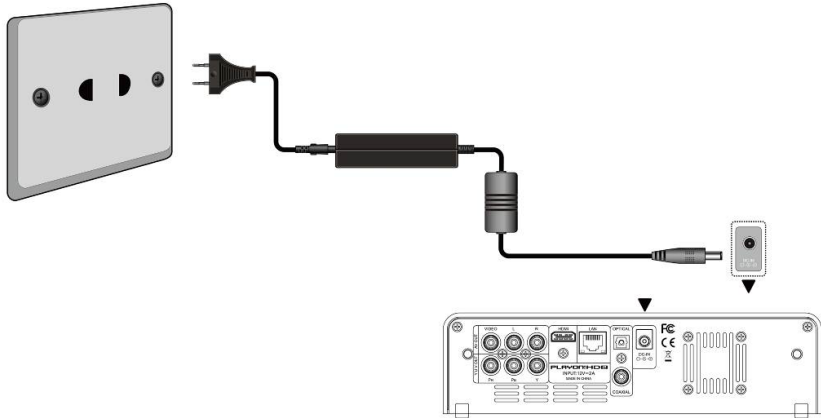
Part	Quantity
Player	1
USB 3.0 cable	1
Remote Control	1
Remote Control Battery	2
AC/DC adaptor	1
Quick Installation Guide	1
Component Cable	1
Composite cable	1
HDMI Cable	1

**Note:** The actual contents in the package might be different from the packing list in this manual.

## 2.3 Connection

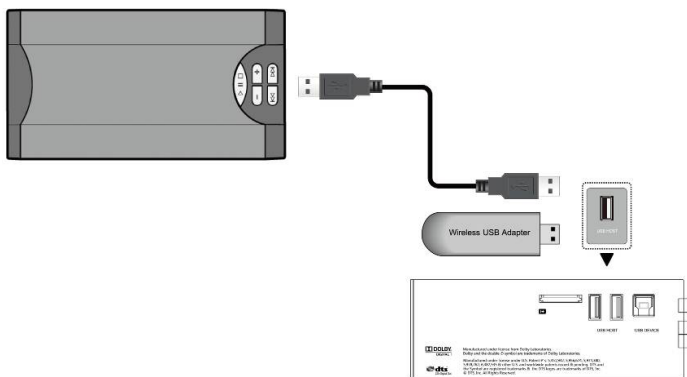
### 2.3.1 Power connection

1. Follow the picture and connect the AC adaptor to the player's DC IN jack;
2. Follow the picture and plug in the AC adaptor to the power outlet



### 2.3.2 USB Mass Storage Device (USB stick, USB HDD etc.) Connection

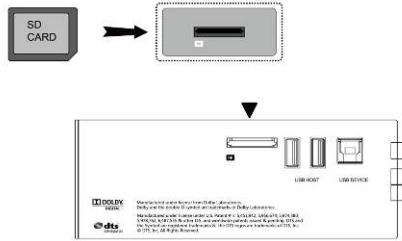
1. Make sure the player is powered on;
2. Plug in the USB stick or USB HDD etc. to one of the USB host ports of this player.
3. To safely remove the USB device use the EJECT button on the remote control.



### 2.3.3 Connecting a Memory Card

Memory card can be used by inserting into the card slot

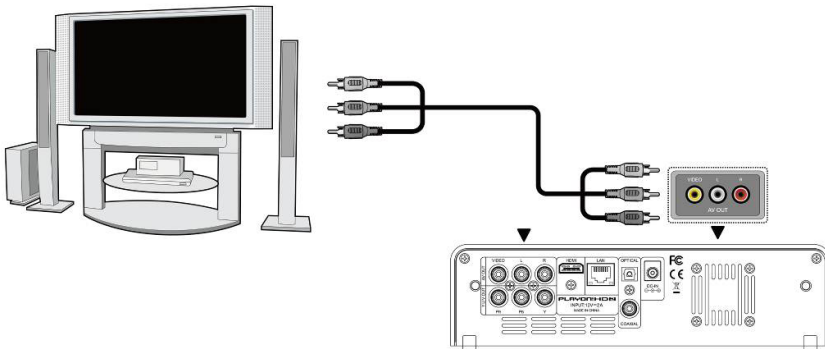
1. Follow the picture to insert the memory card into the card slot properly;
2. Insert the card by following the arrow pointer in the picture.



### 2.3.4 TV connection

#### 2.3.4.1 A/V OUT

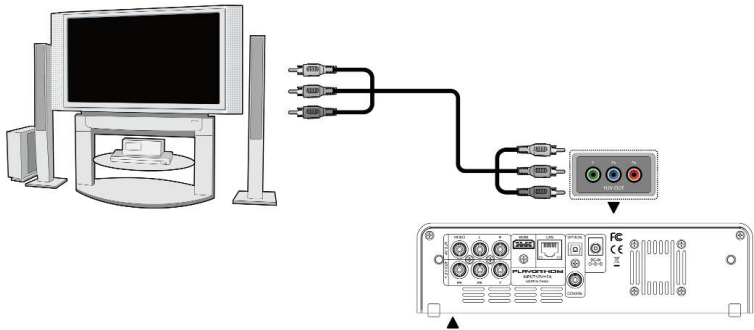
1. Follow the picture and plug in the 3 color connector to the player's A/V OUT jack;
2. Follow the picture and plug in the 3 color connector to the TV's A/V IN jack. This allows you to connect the content in the player to your TV or other display devices.





### 2.3.4.2 Y/Pb/Pr Component OUT

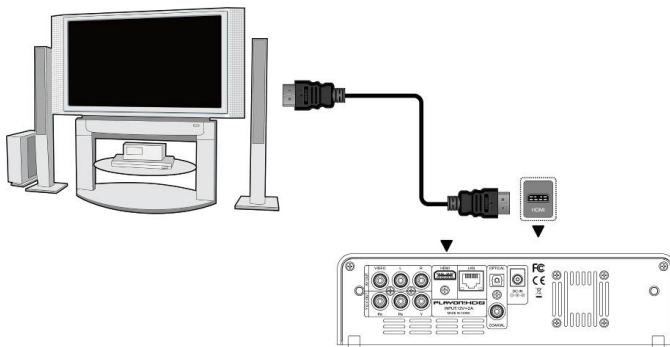
1. Follow the picture and plug in the connector of the YUV cable to the player's Y/Pb/Pr jack;
  2. Follow the picture and plug in the 3 color connector to the TV's Y/Pb/Pr jack.
- Audio Connection while using Y/Pb/Pr Video out:  
First method: use the audio output from the A/V OUT jack;  
Second method: use the audio output from the S/PDIF Coaxial or Optical jack.



This allows you to enjoy your media content in the player, on your TV.

### 2.3.4.3 HDMI OUT

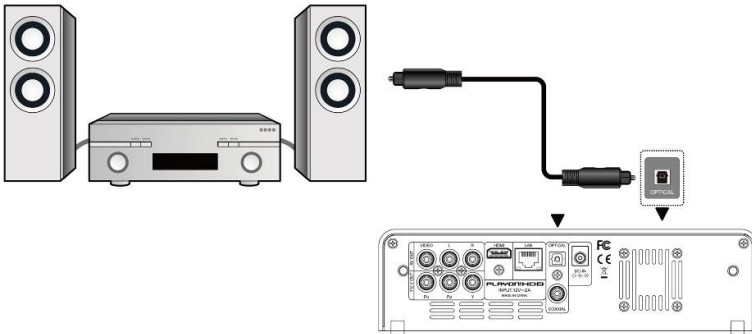
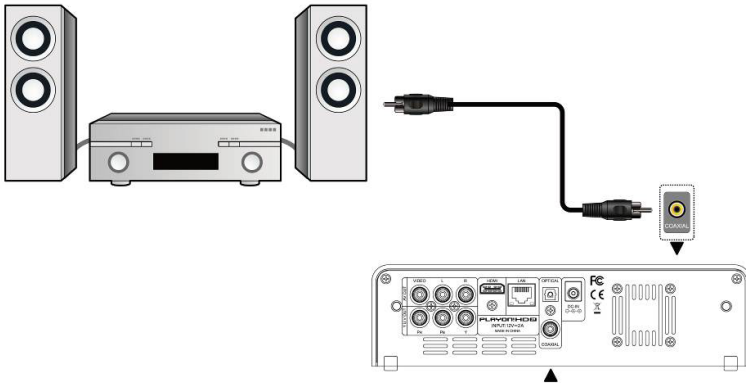
1. Follow the picture and plug one connector on your HDMI cable to the player's HDMI jack;
2. Follow the picture and plug the other connector on your HDMI cable to the TV's HDMI jack.



This allows you to enjoy your media content in the player, on your TV.

### 2.3.5 Digital Audio Device connection

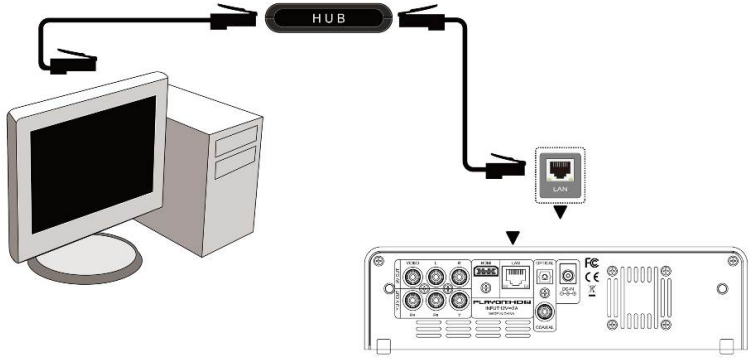
1. Follow the picture and plug in the RCA connector on your coaxial cable to the player's S/PDIF Coaxial jack. Or if you use optical fiber, please plug in the Toslink connector on your optical fiber to the player's S/PDIF Optical jack; (not supplied)
2. Follow the picture and plug in the other connector on your coaxial cable or optical fiber to the digital audio device. (not supplied)



### 2.3.6 Connecting to a LAN

To connect to a LAN (Local Area Network) you require a cat5, cat5e or cat6 network cable (not supplied).

1. Connect one of the crystal plugs on the cable to the player's RJ45 LAN socket;
2. Connect the other crystal plug on the cable to a RJ45 LAN port on your router, switch, or hub devices.

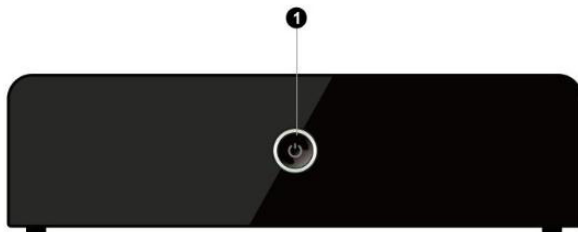


### 2.3.7 Connecting to a WLAN

1. Make sure the player is powered on;
2. Plug the Wireless LAN USB Adapter (i.e. Wi-Fi USB Dongle) to the USB HOST port of the player.

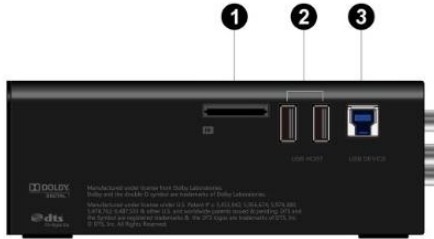
**Note:** The Wi-Fi Dongle is an optional accessory sold separately. (Please refer to '3.1.4 Changing Network Settings' for more details about wireless setup)

## 2.4 Front Panel



1. POWER button & indicator

## 2.4 Side Panel



1. Memory Card slot
2. 2x USB 2.0 HOST port
3. USB 3.0 Device port

## 2.6 Back Panel



1. A/V OUT jack
2. Y/Pb/Pr OUT jack
3. HDMI jack
4. RJ45 LAN socket
5. S/PDIF Optical jack
6. S/PDIF Coaxial jack
7. DC-IN jack

## 2.7 First Time Usage

### 2.7.1 Power On / Off

#### Power On

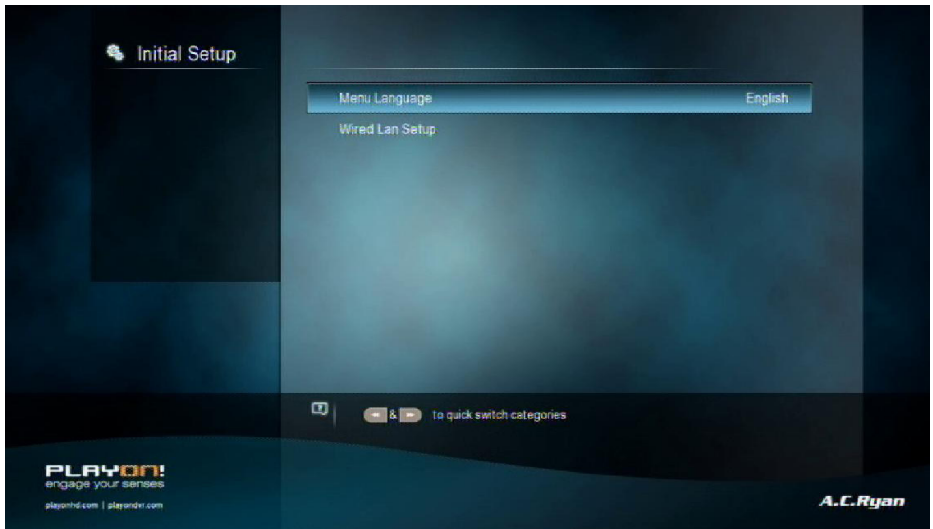
After connecting the DC IN jack, press the power button on the front panel. The indicator will gradually turn to white. And the player will enter the home screen soon.

#### Power Off

Press the power button on the front panel, the player will soon enter standby mode. The power indicator will turn to red. Then unplug the power cord to cut off the power supply.

### 2.7.2 Menu language

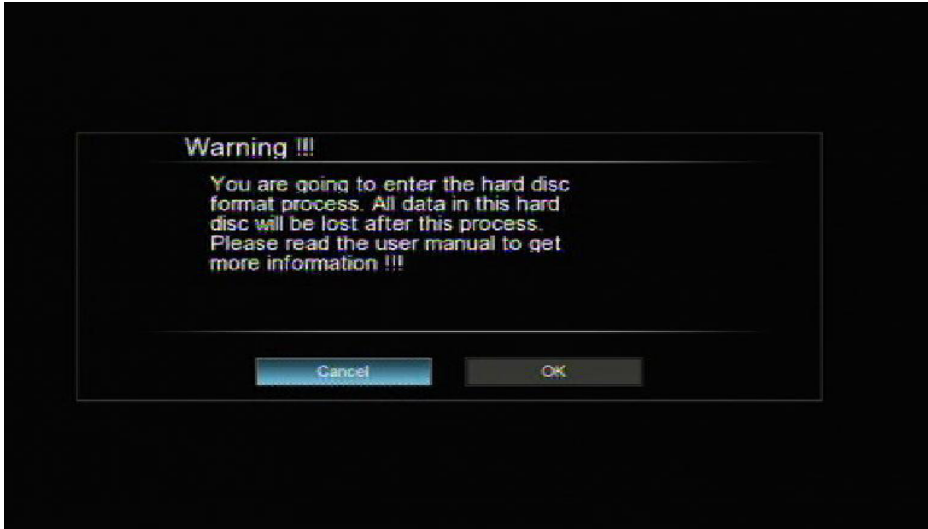
The system language of this player can be set to English or other languages. Change the language you wish in the setup menu, the selected language will take effect immediately.



### 2.7.3 HDD Format

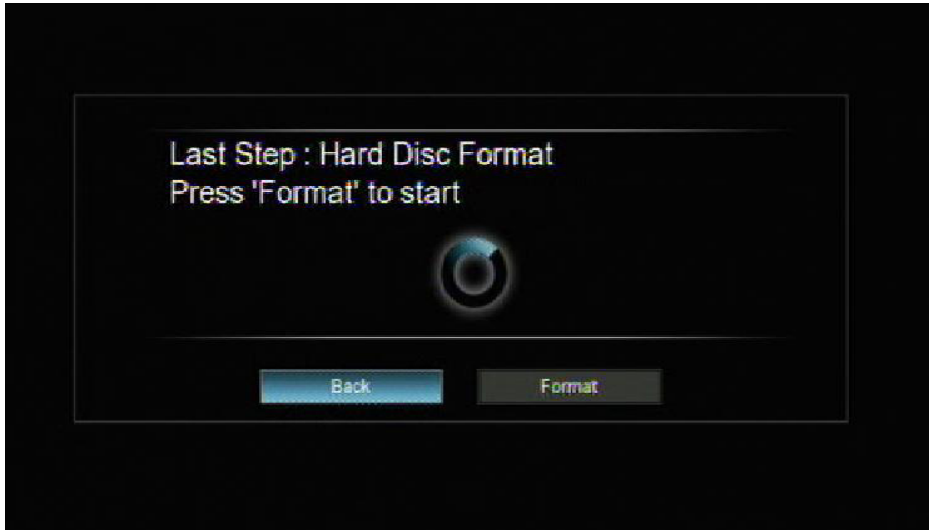
For users who wish to install a new SATA HDD into the player, first you need to format the hard disk using the player built in formatting system before usage. Otherwise many functions can't be used, such as BT download. Please refer to the following procedures to format the hard disk.

- Step 1: Select OK on the Warning page, press OK to confirm.



**Note:** This page can also be accessed via **Setup->System-> Format** menu.

- Step 2: Select **Format**, press **OK**, and then hard disk format will start.

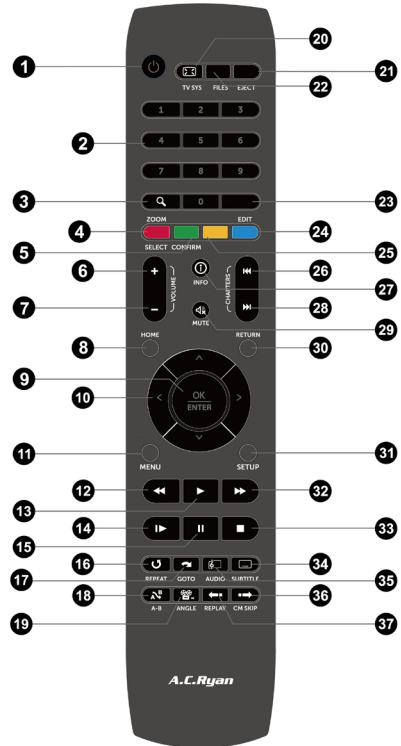


The formatting procedure will be finished within a few minutes. And then you can use the hard disk properly on the player.

**Note:** HDD format will remove all data stored on the hard disk drive. Please take care and backup your data in advance!

## 2.8 Remote Control

- |                  |                          |
|------------------|--------------------------|
| 1. Power         | 2. Numeric buttons       |
| 3. Zoom          | 4. Red/Select            |
| 5. Green/Confirm | 6. VOL+                  |
| 7. VOL-          | 8. Home                  |
| 9. OK /Enter     | 10. Navigational buttons |
| 11. Menu         | 12. FRWD                 |
| 13. Play         | 14. Slow                 |
| 15. Pause        | 16. Repeat               |
| 17. Goto         | 18. A-B                  |
| 19. Angle        | 20. TV Sys.              |
| 21. Eject        | 22. Files                |
| 23. Edit         | 24. Blue                 |
| 25. Yellow       | 26. Prev                 |
| 27. Info         | 28. Next                 |
| 29. Mute         | 30. Return               |
| 31. Setup        | 32. FFWD                 |
| 33. Stop         | 34. Subtitle             |
| 35. Audio        | 36. CM skip              |
| 37. Replay       |                          |





No.	Button	Function
1	Power	Press to enter standby mode or wake up.
2	Numeric buttons	Press to enter channel numbers or numeric input when changing settings.
3	Zoom	Press to zoom the image (photo or video).
4	Red/Select	Press to select files in file selecting menu.
5	Green/Confirm	Function is available in virtual keyboard.
6	VOL+	Press to increase the volume.
7	VOL-	Press to decrease the volume.
8	Home	Press to enter the home screen.
9	OK/Enter	Press <b>OK</b> button to confirm.
10	Navigational buttons	Press the arrow buttons to select menu options, and the OK button to confirm.
11	Menu	Press to enable the option menu, where you can change the review mode of file manager and media library; Press to display or hide the option menu during playback.
12	FRWD	Press to fast rewind the current playback. Press repeatedly to select speeds
13	Play	Press to begin playback.
14	Slow	Press to play back in slow motion. Press the PLAY button to resume regular playback.
15	Pause	Press to pause playback
16	Repeat	Press to set repeat option.
17	Goto	Press to jump to a specific point on a title. Specify the point using Title, Chapter and Time.
18	A-B	Press to set the beginning and end points of a section to repeat.
19	Angle	Press to change the view angle during DVD (with multi-angle) playback.
20	TV SYS.	Press to switch between NTSC, PAL, 480P, 576P, 720P, 1080I, and 1080P.
21	Eject	Press to safely remove the USB device.
22	Files	Press to enter file manager.
23	Edit	Press to enter file editing menu in file manager. Press to enter file selecting menu in media library.
24	Blue	Press to open/close USB DVD-ROM.
25	Yellow	Display / close text console in the browser/internet media
26	Prev	Press to view the previous file / page up.
27	Info	Press to display current status. Press during playback, an on-screen display appears showing track number and time elapsed/remaining.
28	Next	Press to view the next file / page down.
29	Mute	Press to mute audio output, and press again to resume.
30	Return	Press to return to the previous screen while navigating menus.
31	Setup	Press to enter the setup menu.
32	FFWD	Press to fast forward the current playback. Press repeatedly to select speeds.
33	Stop	Press to stop playback.
34	Audio	Press to select an audio track.
35	Subtitle	Press to set subtitle options. You can change the color/size/offset/text encoding of subtitle.
36	CM Skip	Press to advance 30 seconds of the current playback.
37	Replay	Press to rewind 10 seconds of the current playback.

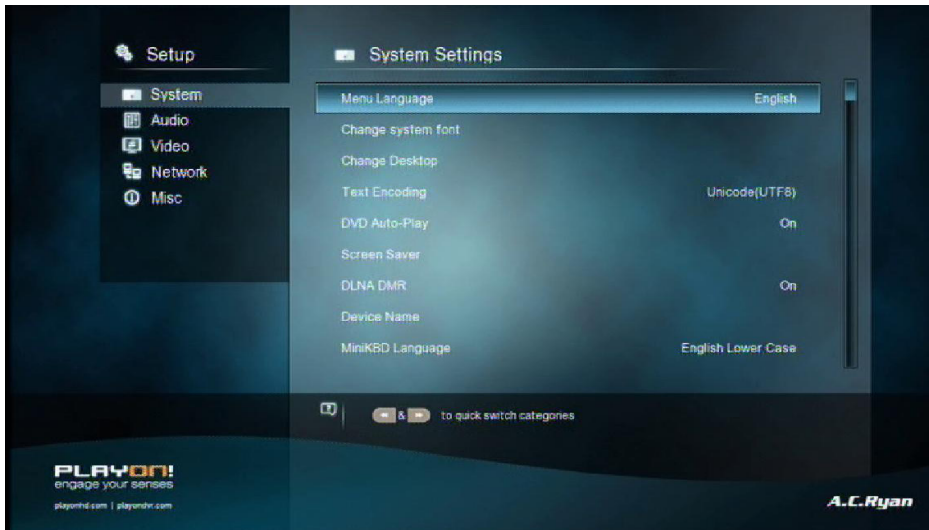
## 3 Main Functions

### 3.1 Setup Menu

The Setup menu allows you to personalize and configure the preferences for your player. Select the Setup icon on the home screen or press **Setup** button on the remote control. There are five setup options, including **System, Audio, Video, Network** and **Misc**. Use the **Prev/Next** (Chapter) buttons to switch categories.

#### 3.1.1 Changing System Settings

Use this menu to configure system settings.



#### Menu Language

- Select to choose the OSD (On-Screen Display) language.

#### Change system font

- Select to change system font.
- Create a folder named "Resource" in the root directory of your USB or HDD, rename your font as 'font.ttf' and then copy it to the folder.

#### Change Desktop

- Select to change the photo of main menu.
- Create a folder named "Resource" in the root directory of your USB or HDD, rename your photo as 'desktop.png' and then copy it to the folder.

### **Text Encoding**

- Select to set the text encoding option (subtitle display and .cue playback)

### **DVD Auto-Play**

- Select to turn on/off DVD auto-play.

### **Screen Saver**

- Timing  
Select to change timing of screen saver.
- Options  
Select to change screen saver.

### **DLNA DMR**

- Digital Media Renderer, can play content received from a digital media controller (DMC), which will find content from a digital media server (DMS)

### **Device Name**

- Select to name DLNA DMR.

### **Mini KBD Language**

- Select to change the language of the mini keyboard.

### **Clear History**

- Select to clear display of recently added area on the main menu.

### **Scan storage**

- Select to set the scan mode of media library.

### **Resume Play**

- Select to turn on / off resume playback (auto-bookmarking) feature for movies.

### **Format**

- Select to format your HDD.

### **Restore Default**

- Select to restore factory defaults.

### 3.1.2 Changing Audio Settings

Use this menu to configure audio settings.



#### Night Mode

- Choose among Off / On / Comfort. If the option is turned on, the audio output volume will be decreased to make you more comfortable.

#### HDMI Output

- Choose among LPCM, LPCM Multi-Ch and Pass-through.

#### SPDIF Output

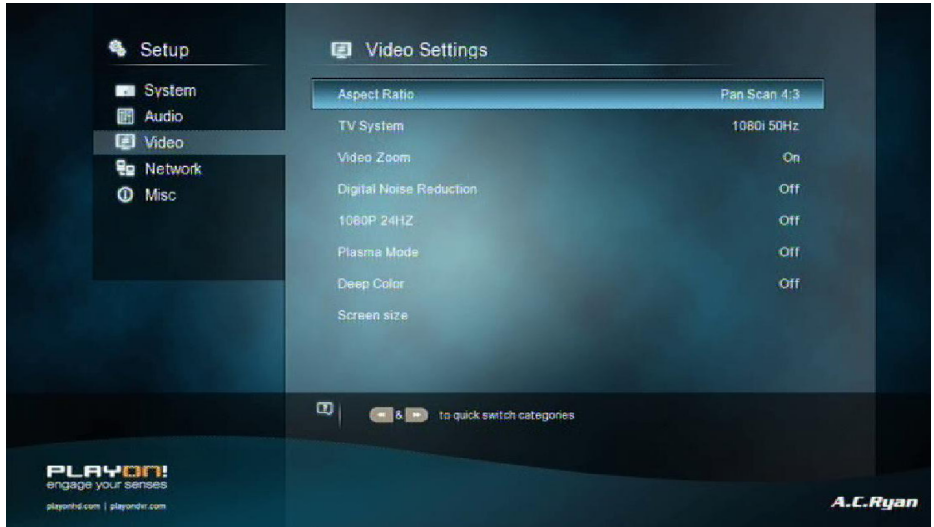
- Choose among LPCM, Pass-through.

**Note:** In pass-through mode, Dolby TrueHD, Dolby Digital Plus, Dolby Digital and DTS sound can be bypassed to the HDMI TV or Digital amplifier.

Due to the bandwidth requirement, Dolby TrueHD and Dolby Digital Plus sound only can be bypassed through HDMI cable, also the TV system must be 720p or above.

### 3.1.3 Changing Video Settings

Use this menu to configure video settings.



#### Aspect Ratio

- **Pan Scan 4:3:** Displays a wide picture on the entire screen and cuts off the redundant portions. Select when a standard 4:3 TV is connected.
- **Letter Box 4:3:** Displays a wide picture with two black borders on the top and bottom of 4:3 screen. Select when a standard 4:3 TV is connected.
- **16:9:** Compress the image to convert the whole image. Select when a 16:9 TV is connected.
- **16:10:** Select when a 16:10 TV is connected.

#### TV SYSTEM

- Select to adjust TV Type and video output resolution. This setting depends on your regional location. Include:

**NTSC** – United States, Canada, Japan, Mexico, the Philippines, South Korea, and Taiwan.

**PAL** – Europe, Greenland, parts of Africa and South America, the Mideast, China, India, Australia, and Indonesia.

**Resolution** - video output resolution

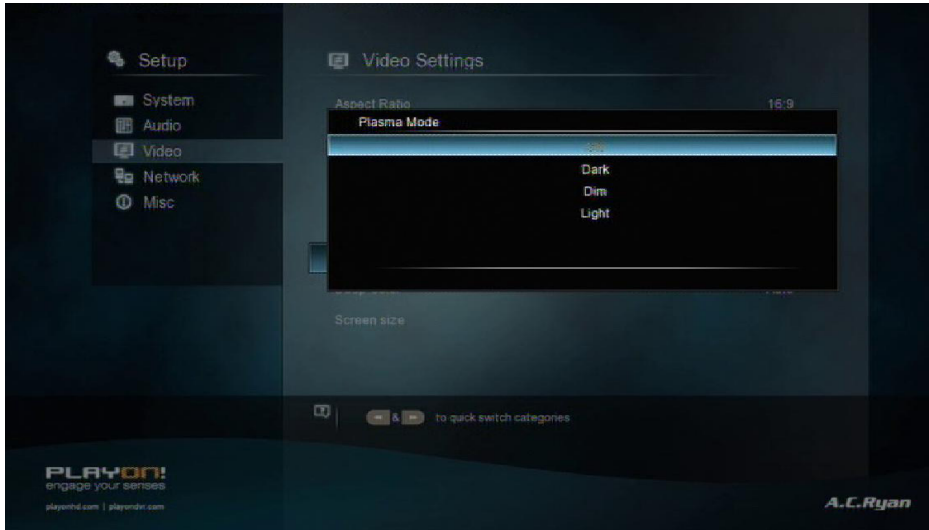
## Digital Noise Reduction

- Noise reduction control for digital signal.

## 1080p 24Hz

- Choose this option to enable or disable 1080P 24HZ support. A TV set with 1080P 24HZ (24P) mode is needed.

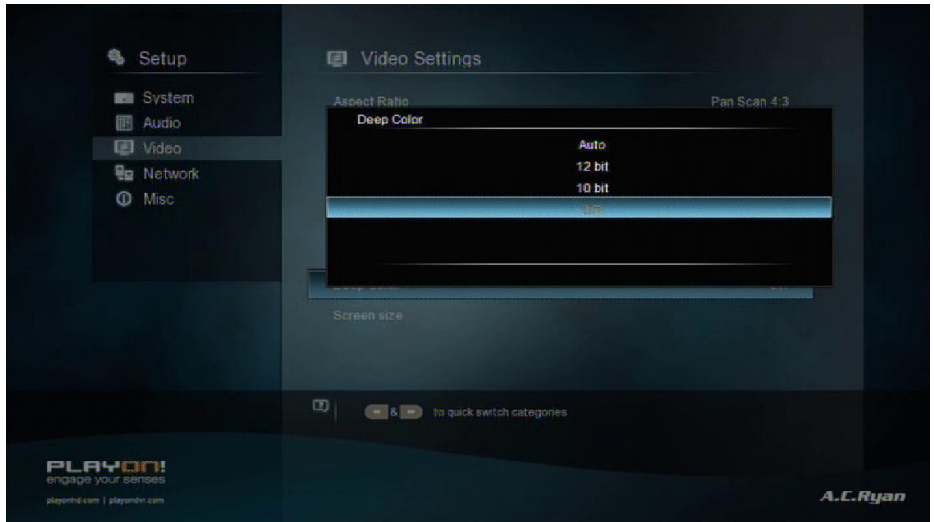
## Plasma Mode



- Help to protect your plasma TV by reducing the level of brightness

## Deep Color

- Help to perform more detailed level of color depth, make continuous color change smoother. You can get more vivid color effects. A TV set with deep color support is needed



## Screen Size

- Adjust the video output size according to the size of TV screen. And press Zoom button to Fit the screen size you have set during video playback.

### 3.1.4 Network

Use this menu to configure your local network settings.

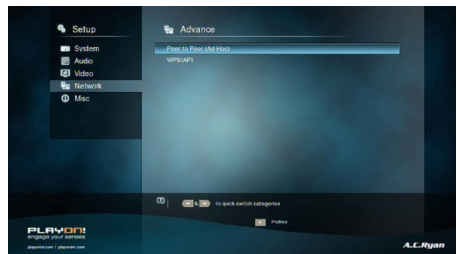
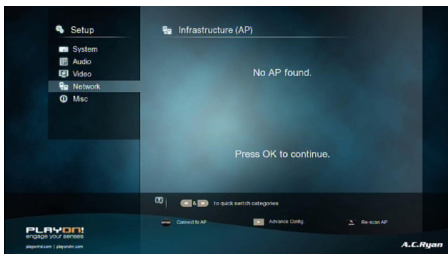


#### Wired Lan Setup

- **DHCP IP (AUTO)**  
Select to obtain IP address automatically (DHCP must be enabled on your Router).
- **FIX IP (MANUAL)**  
Select to manually input the IP Address, Subnet Mask, Default Gateway, and DNS Server IP Address.

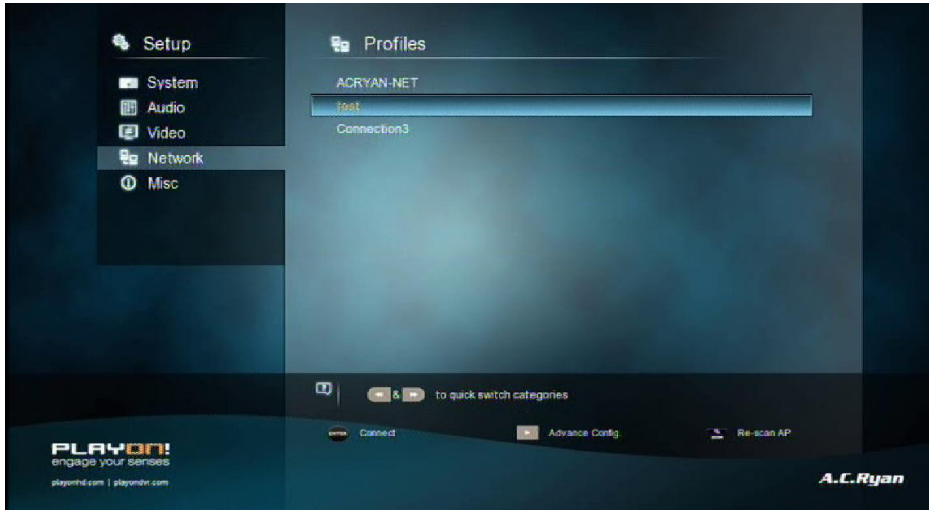
#### Wireless Setup

There are 3 modes for you to select, **Infrastructure (AP)** and **Peer to Peer (Ad Hoc)** and **WPS (AP)** mode. Follow the prompting message on the screen and press **Play** button to choose **Peer to Peer (Ad Hoc)** or **WPS (AP)** mode.





This player can store up to three wireless network connections. Press **OK** to connect, press **Return** to cancel, press **Zoom** to rescan the AP's and press **Play** button to choose **Peer to Peer (Ad Hoc)** or **WPS (AP)**.

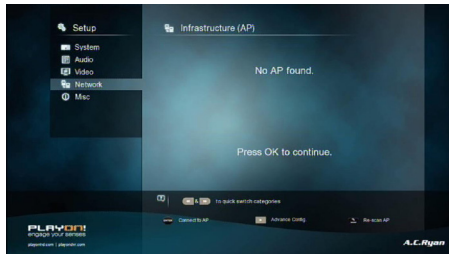


## Infrastructure (AP)

- Infrastructure mode is used to connect computers with wireless network adapters. Also known as wireless clients to an existing wired network with the help of a wireless router or access point. Please take the following steps to configure your wireless network.

### Step 1, Scanning AP (Access Point) in your network

Follow the prompting message on the screen and press the **Zoom** button to select **Infrastructure (AP)** mode and update the access points list, and all SSID will be displayed on the screen.



### Step 2, Input WEP / WPA key

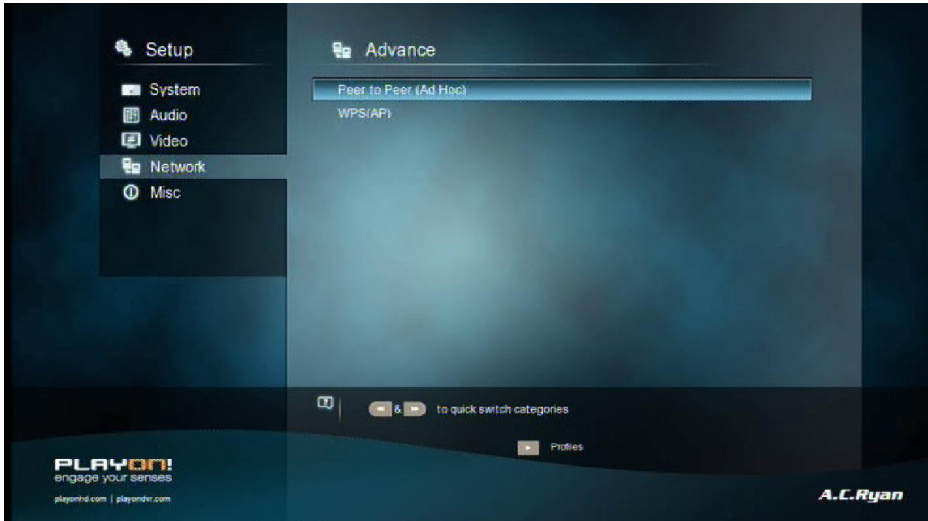
Press **OK** to input encryption keys via the virtual keyboard. Press the navigational buttons to select, **OK** to input, **FFWD** to move cursor left, **FRWD** to move cursor right, **Zoom** to switch between uppercase and lowercase, **Stop** to delete a character, **Play** to make more symbols available, **Green** to change the language of the virtual keyboard, **OK** to confirm and to start testing the connection.



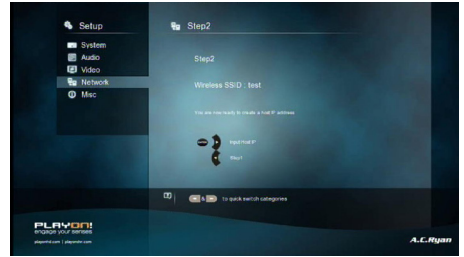
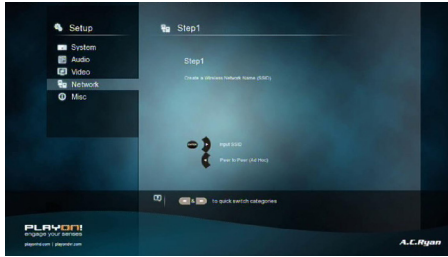
The testing process will take a while, please be patient. If the test is ok, the network information (Profile Name, IP address, Subnet Mask, Gateway, etc.) will be displayed on the screen.

### Peer to Peer (Ad Hoc)

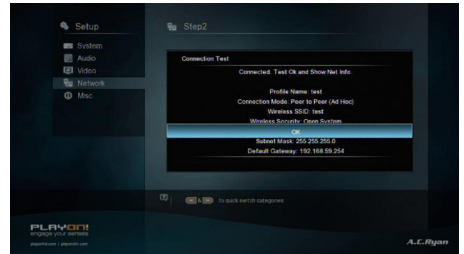
- Peer to Peer mode, which is also called Ad Hoc mode or computer-to-computer mode, is used to connect wireless clients directly together, without the need for a wireless router or access point.



## Step 1, Specify your SSID name



## Step 2, Specify your host IP



## WPS (AP)

- WPS, Wi-Fi Protected Setup, is used to connect a wireless router directly, without searching SSID and inputting password. In this mode, you just need to configure the parameters of your router which support WPS function. There are two modes for you to select, PBC mode and PIN mode.



### PBC

First press the WPS button on the router or select the button mode in the configuration menu of the router, then select the PBC mode, the connection process will take a while, please be patient.

### PIN

Input the pin code when you configure your router, then select the PIN mode, the connection process will take a while, please be patient.

### PPPOE Setup

- Input the ADSL account and password in this menu, system will obtain IP address automatically from the server based on PPPOE protocol.

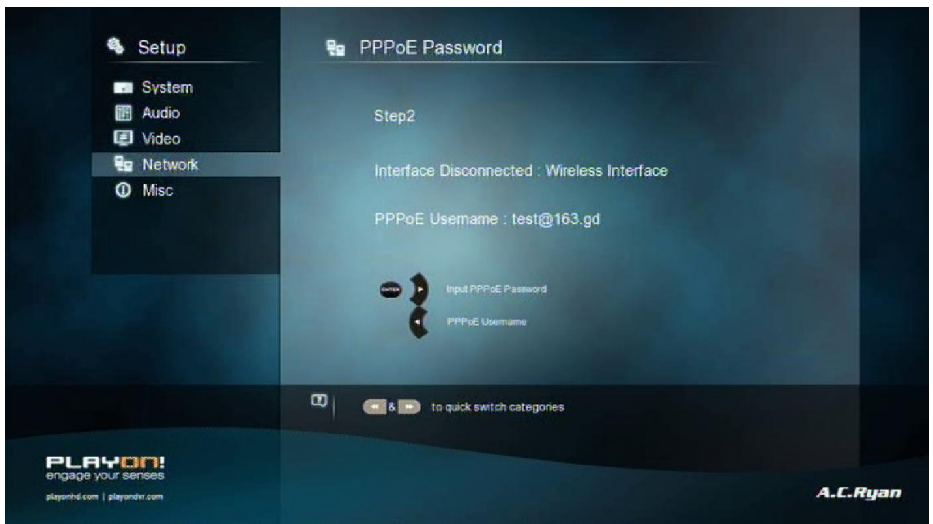
#### Step 1, Select the connection interface, wired or wireless



Step 2, press Right button to input your ADSL account



Step 3, press Right button to input your password and start to test the connection.



## BT

- Select to turn BitTorrent download to On/Off. Please refer to '**BT download**' for more details on this feature.

## SAMBA

- Select to turn NAS function to On/Off. Please refer to '**SAMBA Server**' for more details on NAS function of this product.

## FTP

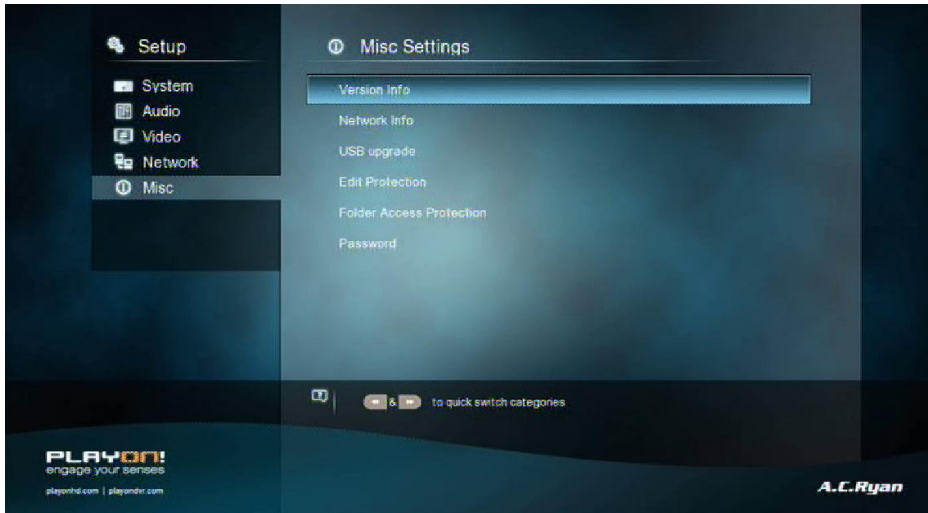
- Select to turn on / off FTP services and to configure your desired login User Name and Password. Please refer to '**FTP Server**' for more details on this feature .

## Host Name

- Select to key in your desired host name to be seen in your network.

## 3.1.5 Miscellaneous

Use this menu to adjust miscellaneous settings.



### Version Info

- This tab shows you information about the software version installed and the material components of your player.

### Network Info

- This tab shows you information about your network, MAC Address, IP address Gateway, Subnet.

## USB Upgrade

- Select to update the firmware via a USB stick.
  1. Copy 'install.img' or extension files to the root directory of a FAT32 formatted USB stick, and connect it to the USB HOST port of the player.
  2. Press **OK** to confirm.

## Edit Protection

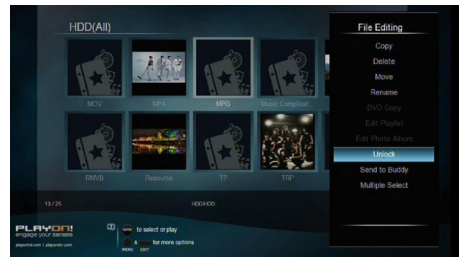
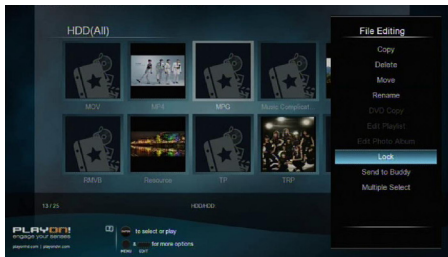
To prevent deleting files and formatting HDD by asking for a password.

The default password is '0000'. Press the **numerical** buttons to input, and the **OK** button to confirm.

## Folder Access Protection

**Lock folders to prevent access to children.**

- To prevent deleting files and formatting HDD by asking for a password. The default password is '0000'. Press the **numerical** buttons to input, and the **OK** button to confirm.  
In file manager, press **Edit** button to lock/unlock folder.



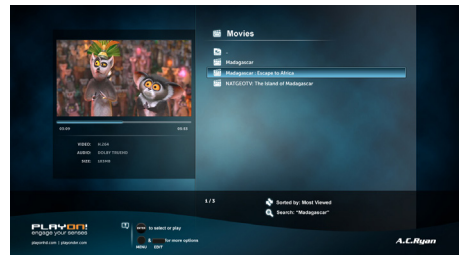
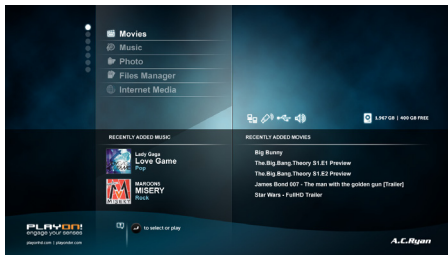
## Password

Change the password.

- The default password is '0000'. Press the numerical buttons to input, and the **OK** button to confirm.

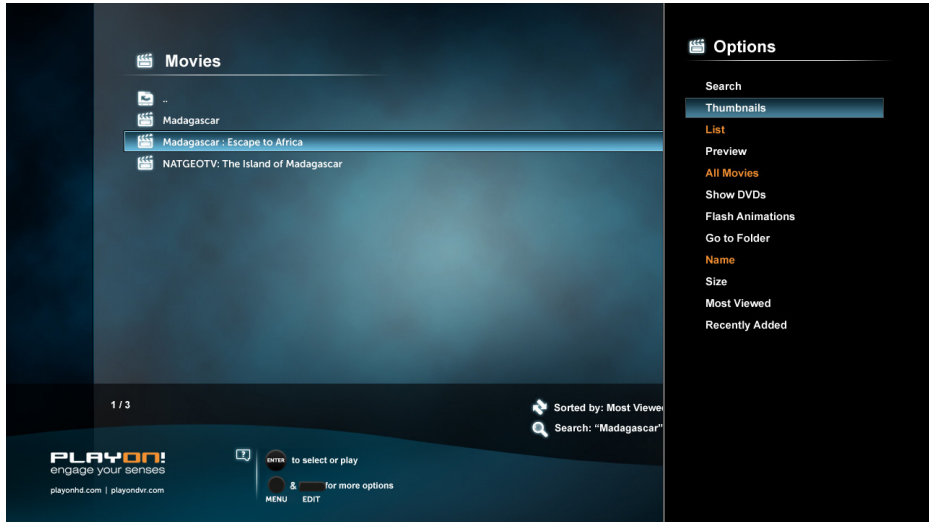
## 3.2 Movie Library

Enter into movie interface, only supported files will be displayed. Please refer to Appendix in chapter '5.1 Specifications' for more details about the supported files.



### 3.2.1 Movie Library Options

In movie library, press the Menu button to display the option menu, the following functions are available through the option menu.



#### Quick-Search

- Choose the Search option in the option menu, you can search for a media file by filter media library to locate the specific media file.

#### Review Mode

- Choose a review mode among Thumbnails, List and Preview from option menu.

#### Sorting Mode

- Choose to sort by Name, Size, Most Viewed or Recently Added from option menu.

#### Show BD/DVD

- Choose to display DVD IFO, BD MV and ISO files directly in media library.

#### Flash Animation

- Choose to display .swf file format in media library.

#### Go to Folder

- Choose to locate the file in file manager.



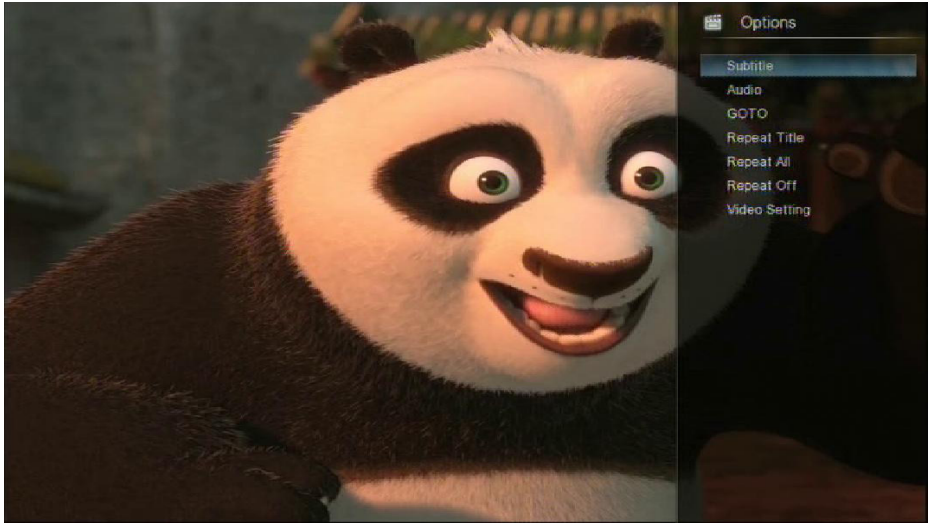
### 3.2.2 Movie Playback Control

You can access the following functions during playback.

Button	Function
Play	Start or resume the playback.
Pause	Pause the current playback.
Prev/Next	View the previous or next file/chapter.
FRWD/FFWD	Fast rewind or fast forward. Press repeatedly to select the speed.
Slow	Play back in slow motion.
Goto	Jump to a specific point on a title. Specify the point using Title, Chapter and Time.
Menu	Display or hide the option menu during playback.
Stop	Stop playback.
VOL+/-	Increase/decrease the volume.
Audio	Select an audio track.
Subtitle	Select a subtitle and change the color/size/offset/text encoding of subtitle.
Repeat	Set the repeat option.
Zoom	Zoom in the image.
Info	View the media information.
CM Skip	Press to advance 30 seconds of the current playback.
Replay	Press to rewind 10 seconds of the current playback

### 3.2.3 Movie Playback Options

During movie playback, press **Menu** button to display or hide the option menu at the side of the screen.



You can also access functions such as audio track, subtitle and repeat mode through the Option **Menu** during video playback.

#### DVD Menu

- Select to return to the navigation menu during DVD IFO or ISO playback.
- Title menu, return to the main menu of entire disc during DVD playback.
- Root menu, return to the root main of each title during DVD playback.

#### GOTO

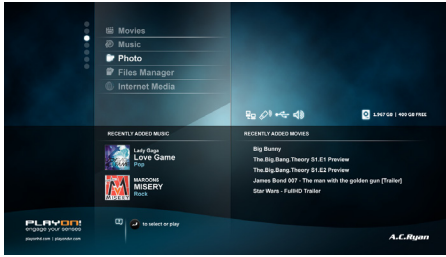
- Select to jump to a specific point on a title. Specify the point using Title, Chapter and Time.

#### Video Setting

- Select to adjust the value of Brightness, Contrast, Saturation and Hue.

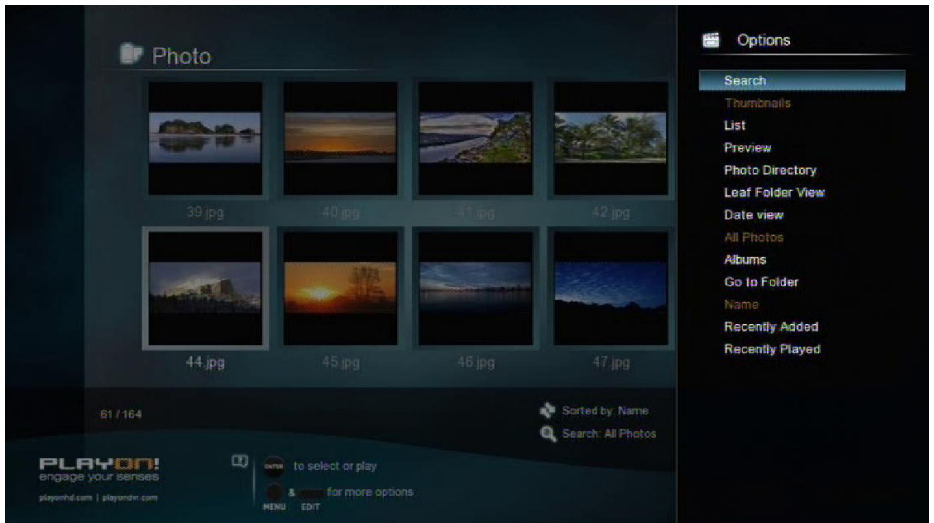
### 3.3 Photo Library

Enter the photo interface, only supported image files will be displayed. This player supports JPEG/HD JPEG/BMP/GIF/TIF/PNG files.



#### 3.3.1 Photo Library Options

In photo library, press **Menu** button to display the option menu, you can access the following functions through the option menu.



#### Quick-Search

- Choose the Search option in the option menu, you can search for a photo by filter photo library to locate the specific photo.

#### Review Mode

- Choose a review mode among **Thumbnails**, **List** and **Preview** from option menu.

### Sorting Mode

- Choose to sort by **Name**, **Recently Added** or **Recently Played** from option menu.

### Folder Directory

- Choose to show all folders.

### Leaf Folder View

- Choose to show all folders that included photo.

### Date View

- Choose to view photo by date.

## 3.3.2 Photo Playback Control

You can access the following functions during photo playback.

Button	Function
Prev / Next	View the previous or next photo.
Up / Down	Rotate a photo in any angle.
Menu	View the previous or next file/chapter.
Stop	Stop playback.
Zoom	Zoom in on the image.
Info	Display picture information

### 3.3.3 Photo Playback Options

During photo playback, press **Menu** button to display or hide the option menu at the bottom of the screen. The following functions are available through the Option menu during photo playback.



#### Slide Timing

- Select to choose the **Interval** and **start** a slideshow.

#### Slide Transition

- Select to choose the **Transition effects**

#### Repeat Mode

- Choose a repeat mode among **Repeat off**, **Repeat all** and **Shuffle Loop** from option menu.

#### Select Music

- Select to turn on/off background music during slideshow playback.
- Select a special music as the background music during photo playback.

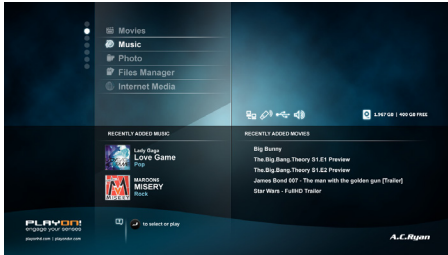
#### Video Setting

- Select to adjust the value of Brightness, Contrast, Saturation and Hue.

## 3.4 Music Library

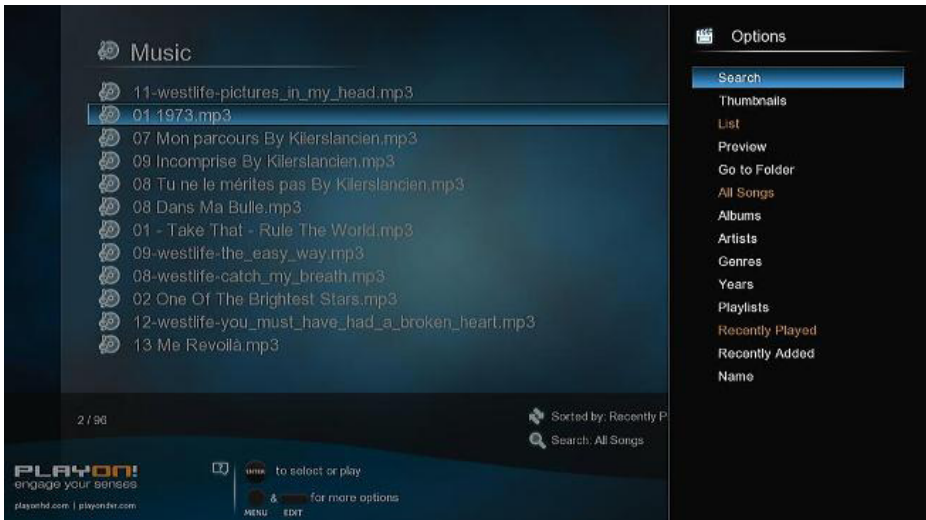
Enter music interface, only supported audio files will be displayed.

This player supports AAC/LC-AAC/HE-AAC/MP2/MP3/FLAC/WAV/MS-ADPCM/OGG/Vorbis/PCM/LPCM/ COOK/RA-Lossless/WMA (DRM and advance Profile or lossless not supported) Standard audio files.



### 3.4.1 Music Library Options

In music library, press **Menu** button to display the option menu, the following functions are available through the option menu.



#### Quick-Search

- Choose the **Search** option in the option menu, you can search by filter music library to locate the specific music.

#### Review Mode

- Choose a review mode among **Thumbnails**, **List** and **Preview** from option menu.

### Filter options

- Choose **Albums** to search for music files by album.
- Choose **Artists** to search for music files by artist.
- Choose **Genres** to search for music files by genre.
- Choose **Years** to search for music files by year.
- Choose **Playlists** to search for playlists.

### Sorting Mode

- Sort your music by **Name**, **Recently Added** or **Recently Played** from option menu.

### Go to Folder

- Choose to locate the file in file manager.

### 3.4.2 Music Playback Control

You can access the following functions during music playback.

Button	Function
Play/Pause	Begin/Pause playback.
FRWD / FFWD	Fast rewind or fast forward. Press repeatedly to select the speed.
Prev / Next	View the previous or next movie.
Menu	Display or hide the option menu during playback.
VOL+/-	Increase/Decrease the volume.
Repeat	Set the repeat option.
CM Skip	Press to advance 30 seconds of the current playback.

### 3.4.3 Music Playback Options

During music playback, press **Menu** button to display or hide the option menu at the side of the screen. Access the following functions through the Option menu during music playback.

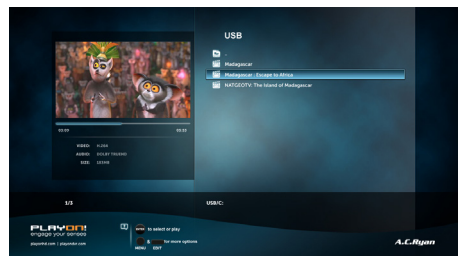
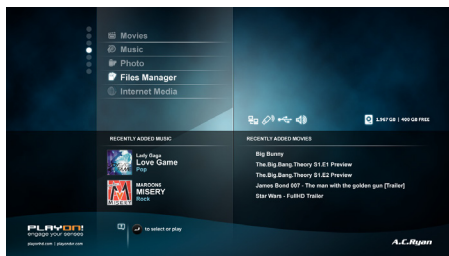


#### Repeat Mode

- Choose a repeat mode among **Repeat off**, **Repeat one**, **Repeat all** and **Shuffle Loop** from option menu.

### 3.5 File Manager

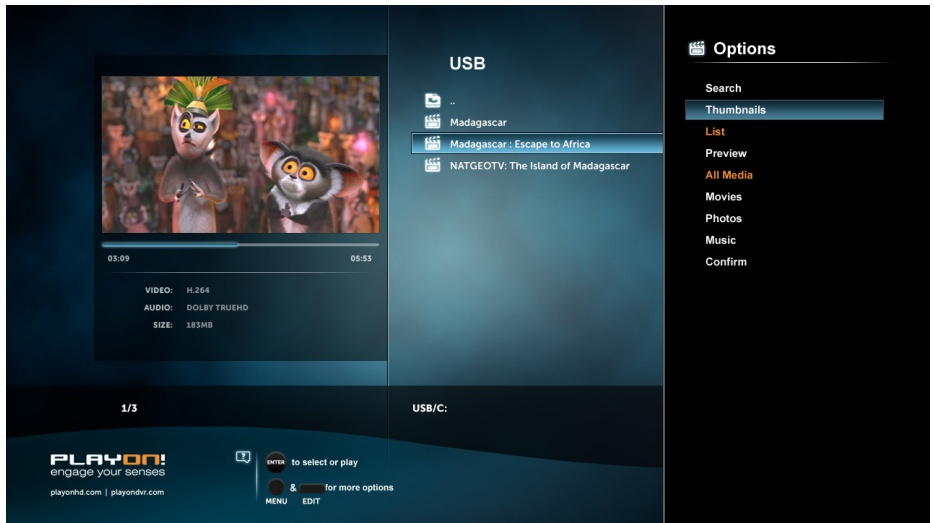
The file manager allows you to browse and play music, photo and movie files stored in the internal HDD, external USB device, memory card and network.





### 3.5.1 File Manager Options

In file manager, press **Menu** button to display the option menu and access the following functions through the option menu.



#### Review Mode

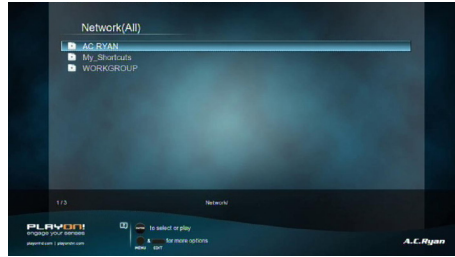
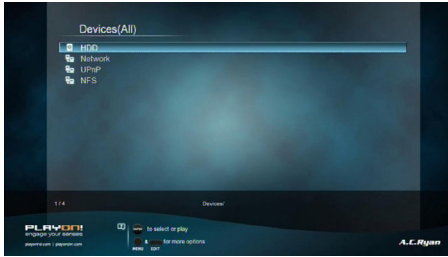
- Choose a review mode among **Thumbnails**, **List** and **Preview** from option menu.

#### Filter options

- Choose **All Media** to display all the supported media files in current directory.
- Choose **Movies** to display all the supported video files in current directory.
- Choose **Photos** to display all the supported image files in the current directory.
- Choose **Music** to display all the supported audio files in the current directory.

### 3.5.2 A/V Streaming via Network

In file manager, press **Menu** button to display the option menu and access the following functions through the option menu.



You can stream your media files shared on the home network. Please refer to '3.1.4 Changing Network Settings' for more details on network settings.

There are two ways to locate media files shared on your local network in the **Network menu**. One is to browse through **Workgroup**; the other way is to browse through 'My Shortcuts'.

#### 3.5.2.1 Browsing through workgroup

You can choose the workgroup which your PC belongs to from the workgroup list, find your PC name, and press the **OK** button to confirm. Then you can select and play the shared media files that you want to browse.

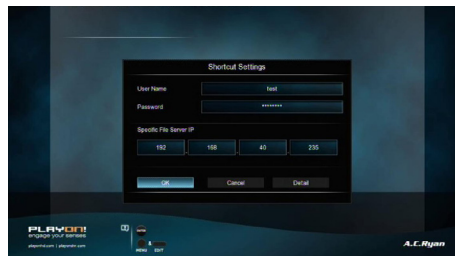
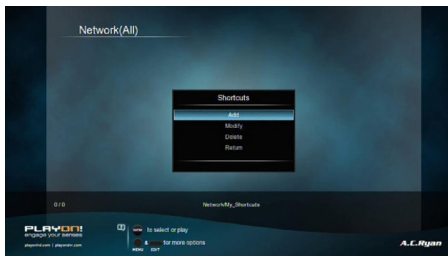
**Note:**

- Due to different network conditions, sometimes the workgroup might not be accessed or shown in the list. And then you need to use 'My Shortcuts' to browse shared files.

#### 3.5.2.2 Browsing through 'My Shortcuts'

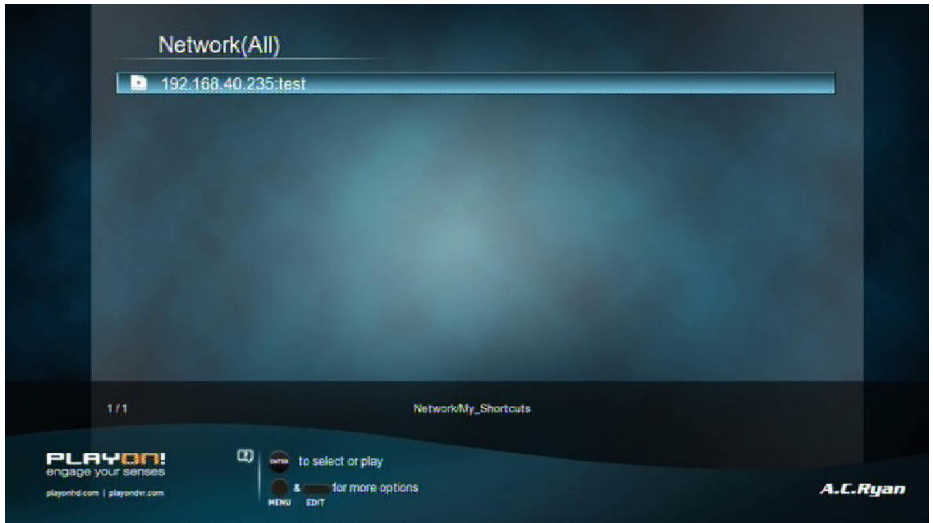
You can set 'Specific File Server IP' and access it from 'My Shortcuts' in the menu.

- Press the Menu button and a pop-up menu appears.



## Review Mode

- Select **Add** to open a popup menu where you can input **Label**, **Net User ID**, **Net Password**, **Domain**, **Host Name**, and **Specific File Server IP**. Select **OK** to confirm, **Cancel** to cancel, and **Simple / Detail** to switch between simple and advanced options.



- Select the shortcut you added and press the **OK** button to confirm. Then you can select and play the shared media files on the destination computer.

### 3.5.3 A/V Streaming via UPnP-server

A built-in UPnP (Universal Plug and Play) client has been integrated on the system, which enables the player to auto-detect UPnP Media Servers on the network to browse and stream media files from them.

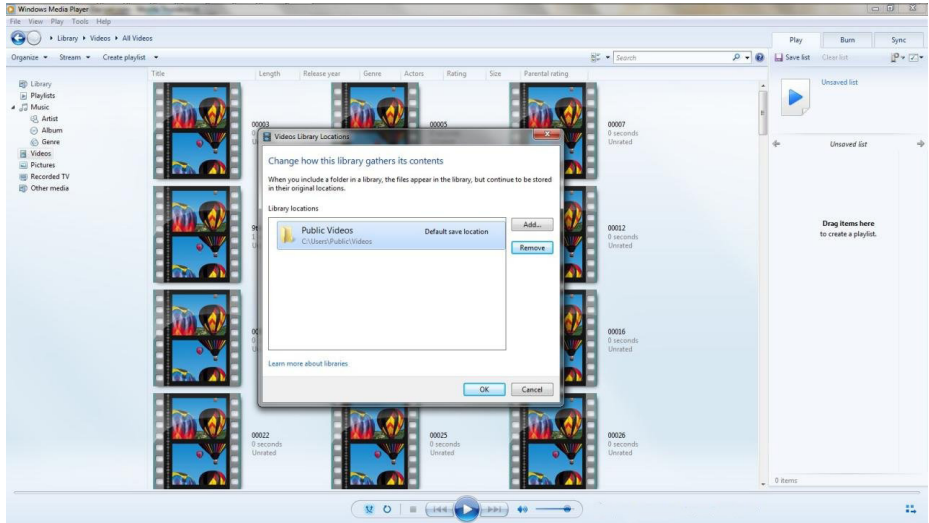
#### 3.5.3.1 Installing UPnP Media Server on your PC

There are a lot of free and commercial UPnP Media Server software, such as Windows Media Connect, Windows Media Player 11, XBMC Media Center (Linux/Mac/Windows), MediaTomb (Linux), etc. Please install one of them on your computer. In the following chapters, we will take Windows Media Player on Microsoft Windows 7 as an example.

### 3.5.3.2 Sharing Media on your PC

The Media Sharing feature of Windows Media Player lets you enjoy the contents of your Windows Media Player library from anywhere in your home.

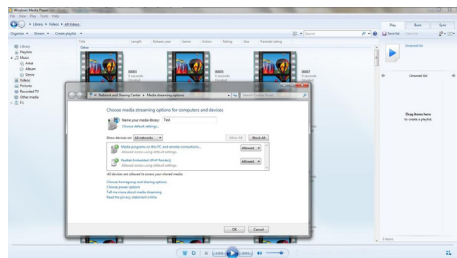
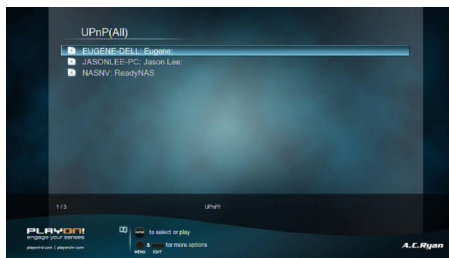
- Open Windows Media Player, click **Organize** -> **Manage libraries** to add or remove media files from the library, as an example.



- Click **Stream** -> **More streaming options**, then you can allow or deny devices to access the media library. Click **Allow** to authorize your player.

### 3.5.3.3 Streaming Media on your Player

- Connect your player to the home network (LAN or WLAN).
- Visit **File Manager** - > **UPnP** menu on the player, select the UPnP-server, and press **OK**.



- Then you can browse the media library shared by Windows Media Player.

## Note:

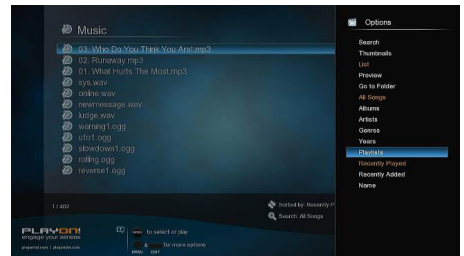
- Make sure your player and your computer are on the same local area network and subnet.
- Firewalls may prevent your player communicating with your computer. Please open the ports manually and add your player to the 'trusted' list, or disable the firewall temporarily.

## 3.6 Playlist management

The file manager allows you to browse and play music, photo and movie files stored in the internal HDD, external USB device, memory card and network.

### 3.6.1 Music playlist

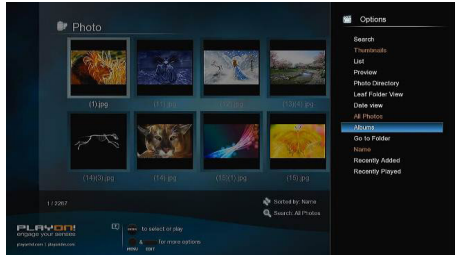
To create a playlist you can browse to your music files via the 'Music' shortcut in main menu or via the file manager. Press the Edit Button on one of your music files and select '**Multiple Select**'. Add the files you wish, press the Edit Button and choose '**Save Playlist**'.



Enter music library, press Menu button and choose Playlists to show your music playlists available on your external USB devices and internal HDD.

### 3.6.2 Photo Album

To create a photo album you can browse to your photo files via the 'Photo' shortcut in main menu or via the file manager. Press the **Edit** Button on one of your photo files and select '**Multiple Select**'. Add the files you wish, press the **Edit** Button and choose '**Save Photo Album**'.



Enter photo library, press Menu button and choose Albums to show your photo albums available on your external USB devices and internal HDD.

### 3.7 Copy Function

- Step 1, press **Edit** button to enter file selecting menu.



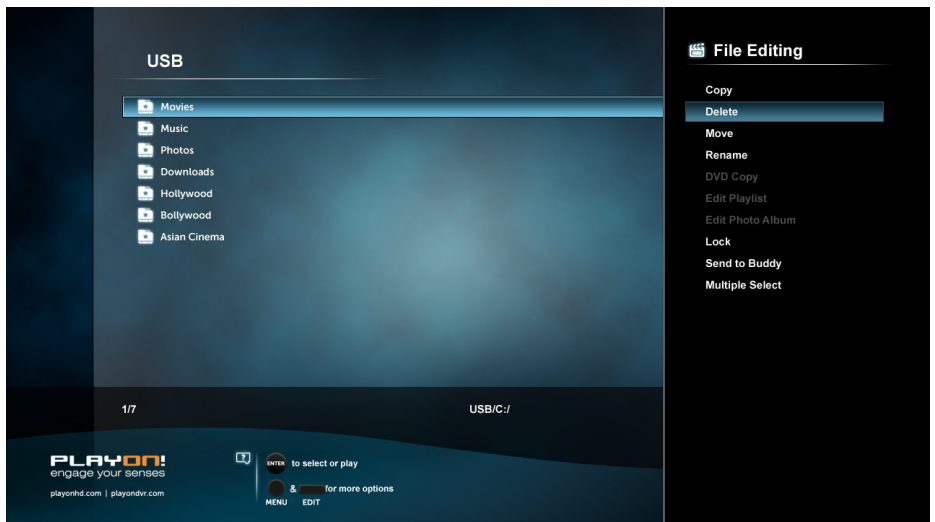
- Step 2, press **Red** button to select file or folder which you want to copy to the list.



- Step 3, press **Green** button to enter multi-file editing menu.
- Step 4, Select destination, and then follow the prompt on screen to finish the copy process.

### 3.7.2 Copy under File Manager

Press **Edit** button to enter file editing menu, choose **Copy** and follow the prompt on screen to finish the process. If you want to select more files and folders, please choose **Multiple Select** to enter the file selecting menu.



## 3.8 Internet Media

This feature is an additional function. All content and services provided through this feature are from third-party service providers, our company does not offer any content and services of this feature and therefore is not responsible for any content and services provided under this feature. Our company is not responsible for any operational stability of the content and services, for example, if you cannot access a certain website for video streaming or news broadcast, or the content of a website has been changed etc, the third party service provider controls and is responsible for this. If you find that these features cannot operate properly, please contact our customer service or visit our company website to obtain the relevant information.

Please find following the instructions for SHOUTcast radio.

### 3.8.1 SHOUTcast Radio

Select **SHOUTcast Radio** icon to get all free internet radio stations, press **OK** to select and play radio station, press **Return** to come back



#### Note:

- When you enter the Digital Radio menu for the first time, it will take several seconds to download data from the Internet, please be patient;
- For more about SHOUTcast, please refer to the website: [www.shoutcast.com](http://www.shoutcast.com).

#### Station

- All downloaded stations will be listed under this menu.

#### Genre

- You can search for stations by genre (pop, rock, jazz, etc.) under this menu.

#### Favorite

- Your favorite stations can be kept under this menu..

#### Search

- You can search for stations with the on-screen virtual keyboard under this menu.

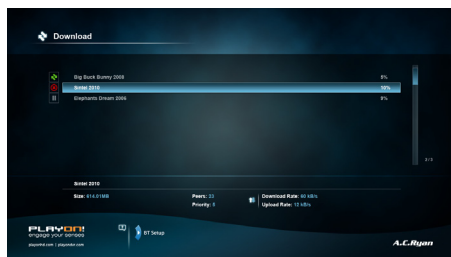
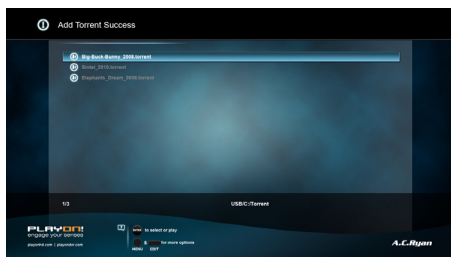


### 3.9 BT Download

Select the **Torrents** icon on main menu. You can see the status of torrents download progress and configure the BT download settings in this menu. Press **Left/Right** button to enter into download menu and BT setup menu.

#### Add a torrent

Locate your torrent file (.torrent) in file manager menu either USB, HDD or Network then press **OK** button to add the torrent to start downloading.



#### Download Menu

The download progress can be displayed when you enter Torrent on the main menu.

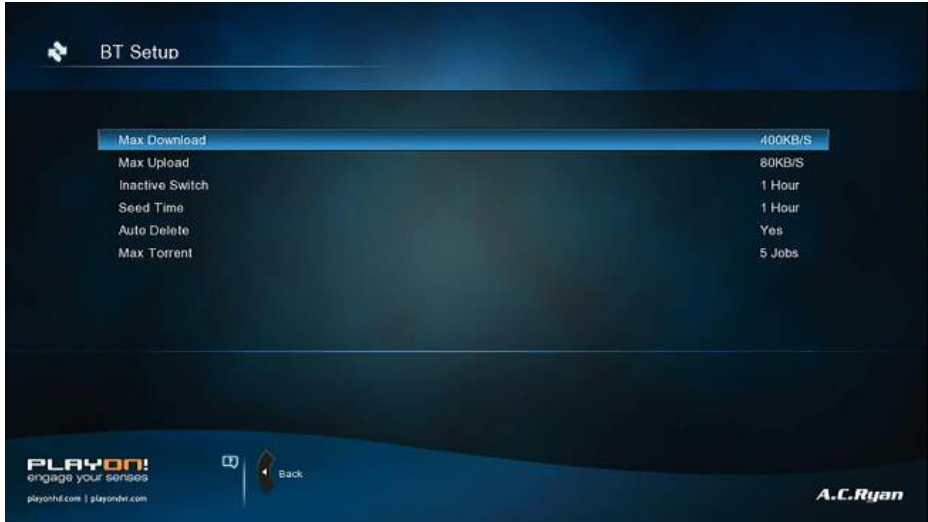
The following buttons can be used under this menu.

Button	Function
Up/ Down	Move cursor up / down.
OK	Press to adjust the priority of the download task
Play/Pause	Press to start/pause download.
Stop	Press to stop/delete download.
Return	Return to the previous menu.

## BT setup Menu

The download progress can be displayed when you enter Torrent on the main menu.

The following buttons can be used under this menu.



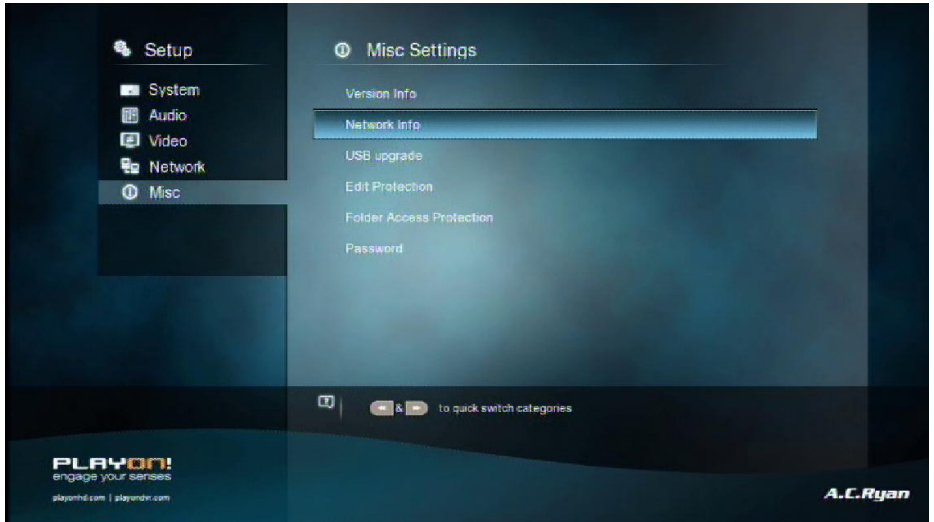
In the **BT Setup** menu, you can configure the following settings. Use **Up/Down browser** and **OK** button to change the settings.

- Set the maximum download rate.
- Set the maximum upload rate.
- Set the idle hours to start the next download automatically.
- Set the seeding hours.
- Set to delete the finished torrent files automatically or not.
- Set the maximum number of simultaneous download tasks.

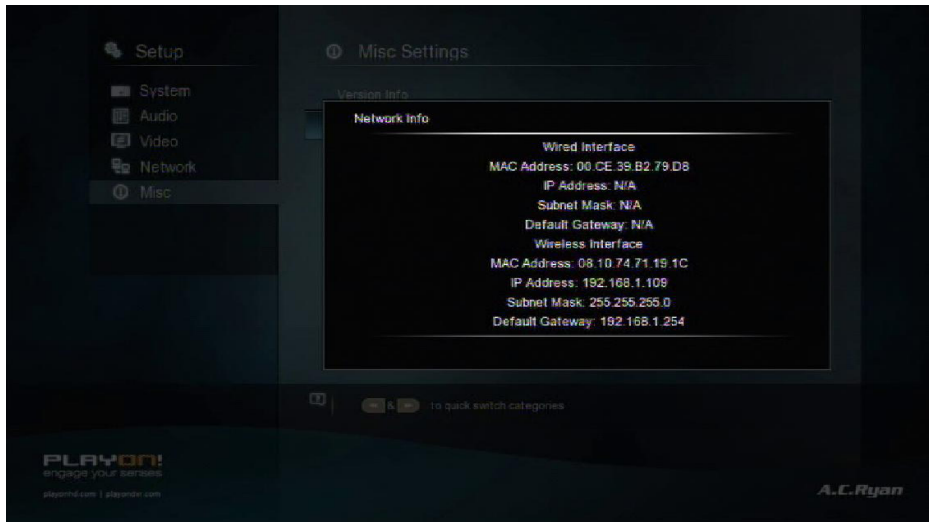
## 3.10 Web Management

The player has its own web management that can also be used to view the content of your hard disk, adding torrent and more. To use this feature the Media player must be connected to the same network as your PC via Wired Ethernet Cable or Wireless USB Dongle, you can access the Web Management through your PC web browser.

- Step 1, Go to the player Setup browse for Network and turn ON BT and Samba services
- Step 2, Check your player IP Address, Go to the player Setup select Misc.



- Step 3, Browse for Network info then press OK, your IP Address will show.



- Step 4, Open your computer web explorer (IE, Opera, Firefox) and Key-in <http://IPaddress:1024> (ex. <http://192.xxx.xx.x:1024>), after keying press enter and it will display the player Web Management.



### 3.10.1 Knowing more about Web Management

#### REMOTE

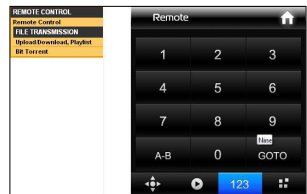
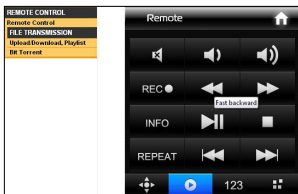
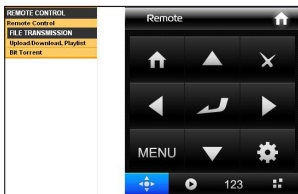
You can control the player via the Neighbor Web Remote.

#### Browser

#### Playback Buttons

(please disregard Record Button)

#### Number shortcuts



## FILE TRANSMISSION

### Devices

You can either select internal hard drive or external USB that is connected to the player.

REMOTE CONTROL		Device list						
Remote Control								
FILE TRANSMISSION								
Upload/Download, Playlist								
Devices		Partition	Drive type	Total size	Used	Free	Used percent	Mount point
Movie playlist		HDD1	HDD	487.48 GB	251.32 GB	236.16 GB	52 %	/tmp/hdd/volumes/HDD1
Music playlist								
Picture playlist								
Bit Torrent								

You can upload and download the file from your player's internal disk. Press the Menu button and a pop-up menu appears.

- For Uploading, please choose any media file from any destination and click Upload. The selected file will be uploaded to the player's internal disk.
- For downloading, select a file from the player's internal disk or right click on it.

REMOTE CONTROL		HDD1	
Remote Control			
FILE TRANSMISSION			
Upload/Download, Playlist		Upload a file to the above folder: <input type="text"/> <input type="button" value="Choose..."/> <input type="button" value="Upload"/>	
Devices			
Movie playlist		[Folder icon] <a href="#">\$RECYCLE.BIN</a>	
Music playlist		[Folder icon] <a href="#">AC Jukebox</a>	
Picture playlist		[Folder icon] <a href="#">AVI</a>	
Bit Torrent		[Folder icon] <a href="#">BD-ISO</a>	
		[Folder icon] <a href="#">BD-Structure</a>	
		[Folder icon] <a href="#">BT</a>	
		[Folder icon] <a href="#">FLV</a>	
		[Folder icon] <a href="#">image</a>	
		[Folder icon] <a href="#">KVCD</a>	
		[Folder icon] <a href="#">M2TS</a>	
		[Folder icon] <a href="#">MKV</a>	
		[Folder icon] <a href="#">MOV</a>	
		[Folder icon] <a href="#">movie</a>	
		[Folder icon] <a href="#">MP4</a>	
		[Folder icon] <a href="#">MPG</a>	
		[Folder icon] <a href="#">music</a>	
		[Folder icon] <a href="#">Music Complications</a>	
		[Folder icon] <a href="#">Photos</a>	
		[Folder icon] <a href="#">Resource</a>	
		[Folder icon] <a href="#">RMVB</a>	
		[Folder icon] <a href="#">TP</a>	
		[Folder icon] <a href="#">TRP</a>	
		[Folder icon] <a href="#">TS</a>	
		[Folder icon] <a href="#">VOB</a>	
		[Folder icon] <a href="#">WMV</a>	

## BitTorrent

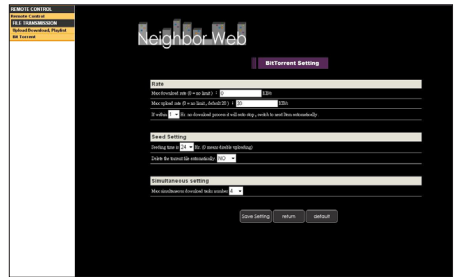
You can use the player Neighbor Web function to add a torrent file.

- Step 1, Open a web browser from your PC and browse for any torrent sites.
- Step 2, Select/Choose the file you wanted to download on the Torrent site and save it anywhere on your PC. The file must have (.torrent) as extension.
- Step 3, On Neighbor Web select Add New torrent.



- Step 4, Select choose and browse for the torrent file (.torrent) you previously saved. Click YES and it will add and download the torrent file.

After adding, the window will go back to the main BitTorrent page and you can see the added file is starting to download. Please be aware that the downloading speed will depend on the Seeds, Peers and the speed of your service provider.



## Neighbor Web BitTorrent Setting

Here you can customize the settings of the BT client, you can alter Upload and download rate, seed time and the number of downloads.

## 3.11 Jukebox



(YetAnother) MovieJukebox is a command line tool, written in Java, which recursively scans your video library for video files (AVI, MKV, VIDEO\_TS, BluRay, etc.) and analyzes these files in order to extract information like: year, language, subtitles, container, part, fps, audio and video codecs. Other movie and television information like, director, rating, etc. are collected using various plugins for online databases such as IMDb, TheMovieDB, TheTVDB, Allocine, FilmAffinity, FilmWeb, etc.

MovieJukebox then generates the indexes that are compatible for displaying in the AC Ryan Playon! series media boxes.

### Getting Started

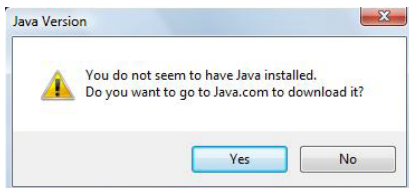
#### 1. Launch YAMJ for AC Ryan

(Please download the latest version from our support page at <http://www.acryan.com/web/support/>)

Launch the program by double clicking on the icon on your desktop or from the Start Menu, AC Ryan MovieJukebox



The program will prompt you to install Java runtime if it does not detect any Java installation in your system.



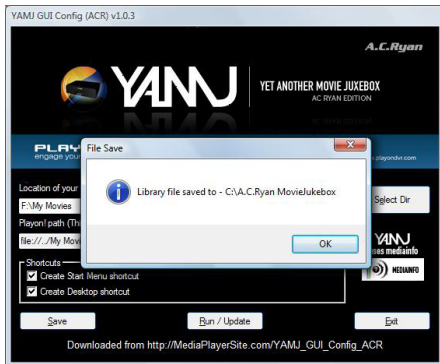
Please select Yes to proceed with the installation of Java.

## 2. Running YAMJ for AC Ryan

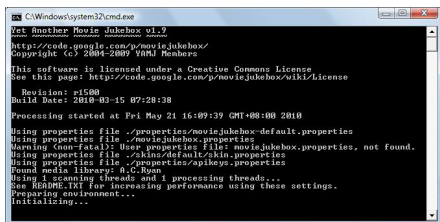


2.1 Select the directory of your stored movies in your product internal HDD, or on any external USB storage device or network attached storage (NAS) which you will use to run the Movie Jukebox on the player.

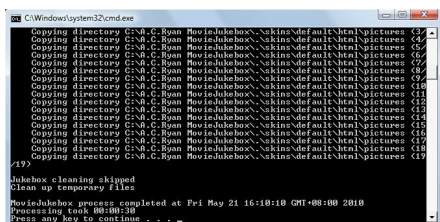
**Note:** Generating the necessary information to a network device may take a longer time than doing the same via USB.



2.2 Press the Save button to save the directory information. Press OK to close the dialog box.



2.3 Press Run/Update to start generating the Jukebox. An active internet connection is required to obtain the movie information.



2.4 Press any key to close the command window after the generation is completed.



### 3 Updating existing Jukebox

You can update the existing Jukebox if you have add/remove movies to the previously saved directory.

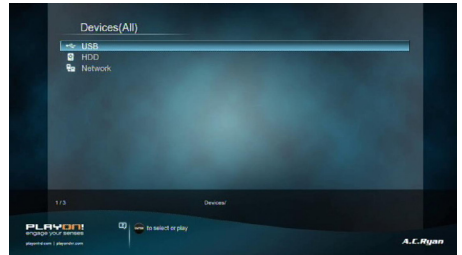
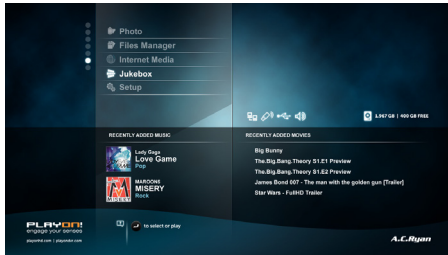


Launch Run or Update YAMJ by double clicking on the icon on your desktop or from the Start Menu, AC Ryan Movie Jukebox

#### Running Movie Jukebox

From the Home menu screen, select **Jukebox** icon to enter the Movie Jukebox menu.

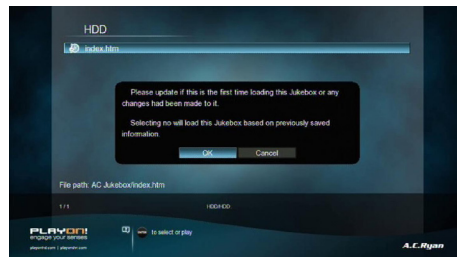
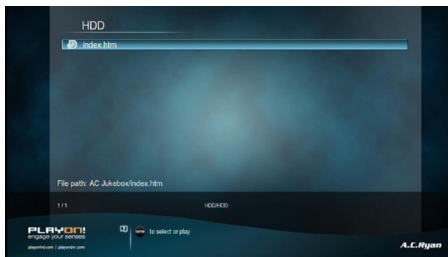
Go to the location of your Jukebox where it was generated with YAMJ for AC Ryan.



Upon entering the location, the system will search and display all generated Jukebox information for loading (if you have more than one)

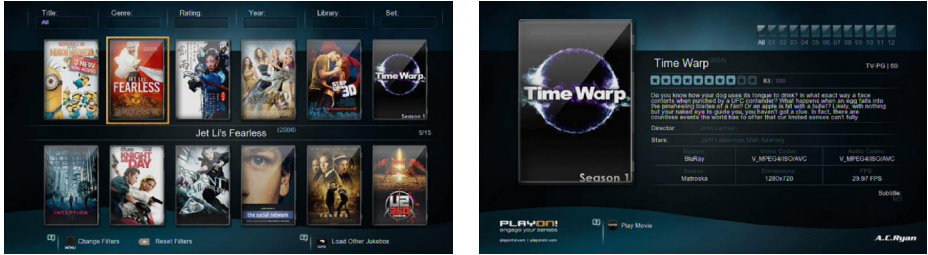
A message box will ask if you want to update the selected Jukebox

- Choose OK if you are loading it for the first time or made any changes.
- Choose Cancel to continue loading for the second time or if you did not do any changes.



\*: Updating the Jukebox for the first time may take a while depending on the location of your stored Jukebox and the amount of movies this Jukebox has. You can speed load the same Jukebox again the next time by selecting Cancel.

If you have added/removed any new contents to your current Jukebox, please generate again with Run or Update YAMJ and then select Yes to update and load with the new Jukebox information. Choosing Yes is also required for loading Jukebox for the first time.



Selecting Other – All from the category page will display all cover arts in the Jukebox in a thumbnail layout. You can also use the category page to sort and display your movies according to Genres, Title, Rating, Year, etc.

Selecting any movie from the thumbnail will display the movie details as well as the movie synopsis, star rating, etc as generated by YAMJ for AC Ryan. Press the **OK** button on your remote control to start playing the movie. Enjoy.

### 3.12 SAMBA Server and Client

This player can be used either as a SAMBA Server or as a client.

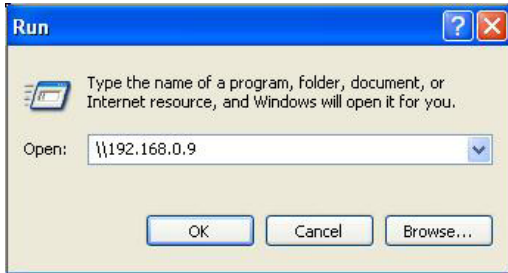
#### 3.12.1 SAMBA Client

You can stream media files shared on the home network. Please refer to '3.5.2 A/V Streaming via Network' for more details.

#### 3.12.2 SAMBA Server

This product functions as a NAS (Network Attached Storage) device when it is attached to the home network via WLAN. This feature allows users to store and retrieve large amounts of data from their own local network.

- When the network connection is done correctly and ready for use, please turn on **SAMBA** function in the setup menu in advance (refer to **3.1.4 Changing Network Settings** for more details), and then type in: \\IP Address or \\Host name in the Run window (click Run in the start menu) or in the address bar of a web browser, for example Internet Explorer on your PC (if the IP address of the product is 192.168.0.9, please type in: \\192.168.0.9), and click OK or press the Enter button on the keyboard.



Under Windows Vista and Windows 7, please type in at the search bar:

\\192.168.0.9

Then press the Enter button on the keyboard.



You can then manage the files stored on the internal hard disk of the product. In this way, you can also playback and copy files via network between your PC and the internal hard disk of this product.

#### Note:

- Make sure the player is connected properly to your network, please refer to '**3.1.4 Changing Network Settings**' for more details;

### 3.13 FTP Server

This product can also function as a FTP Server when it is attached to your home network via wired or wireless connection.

#### 3.13.1 FTP Server Configuration

- You can configure the username and password of the FTP Server. Please refer to '**3.1.4 Network setup**' on doing so.

On your product

- Assign a manual Fixed IP address for the product, for example 192.168.0.9 when you connect to your router either via wired or wireless connection.
- Assign the same subnet mask as your router, usually 255.255.255.0 and the gateway of your router (router's local IP address, usually 192.168.xxx.xxx). Please refer to your router documentation on getting this information from your router.
- Key in your router DNS IP address (primary or secondary)

On your router,

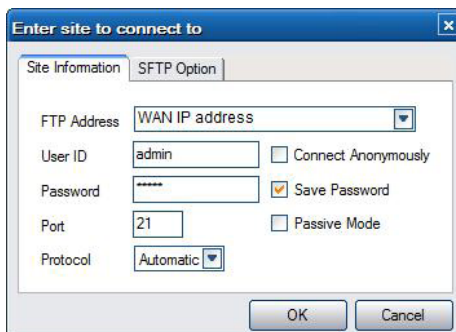
- Configure FTP Server within your router's Virtual Server setting and key in the above IP address in example, 192.168.0.9 and change the public port to 21 and private port to 21 which is by default.
- For your convenience, you can also choose to enable Dynamic DNS and sign up for a free DDNS domain at any of the website providing such free services. An example would be [www.dyndns.com](http://www.dyndns.com)
- At your router's DDNS page, key in your host name and enter the same user name and password when you create a DDNS account. Please refer to your router documentation on getting this information from your router.

### 3.13.2 Accessing from a FTP program

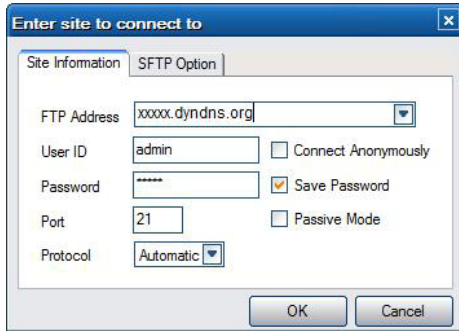
Using your favorite FTP application on your PC, an example would be ALFTP, which can be downloaded from <http://www.altools.com/ALTools/ALFTP.aspx>

At the FTP program connection page, you can either connect using your router's WAN IP address or via your DDNS host name.

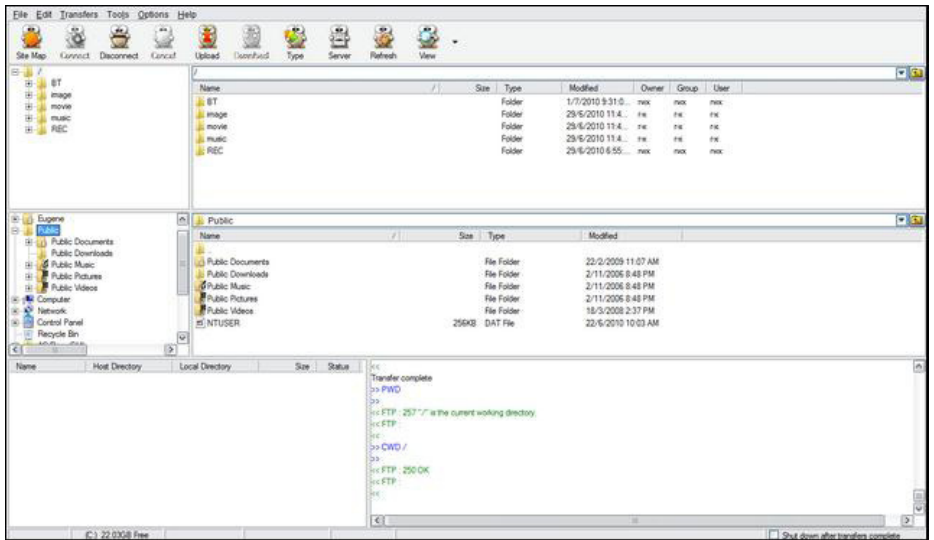
Be sure to start the FTP service with your User Name and Password as discussed at FTP, **'3.1.4 Network'**



FTP Address: Your router's WAN IP address  
User ID: The User Name which was set under FTP, **'3.5 Network setup'**  
Password: The Password which was set under FTP, **'3.5 Network setup'**



- FTP Address: Your DDNS host name
- User ID: The User Name which was set under **FTP, '3.1.4 Network'**
- Password: The Password which was set under **FTP, '3.1.4 Network'**



After login is successful, you will be able to upload/download files via FTP Server.

## 4 Upgrading the Firmware

The firmware is the operating system (OS) installed on the device. Firmware upgrades can bring new features, improvements and bug fixes.

- Step 1, download the firmware from our website [www.acryan.com](http://www.acryan.com) and extract it.
- Step 2, Copy 'install.img' to the root directory of a FAT32 formatted USB stick, and connect it to one of the USB HOST ports of the player (the player must be turned off!)
- Step 3, Press and hold the power / standby button on the front panel, and do not loosen.
- Step 4, wait for about 15 seconds, and then loosen your finger on the power / standby button; Firmware installation will start.
- Step 5, DO NOT remove the power cord during the firmware process. This might damage your player and result in an incorrect firmware flash!

Firmware installation will start. There is another way for upgrading. Please refer to USB Update in chapter '3.1.5 Miscellaneous' for more details.

## 5 Appendixes

### 5.1 SPECIFICATIONS

- I/O INTERFACES SUPPORTED:
- Gigabit Network Adapter
- 3.5" SATA HDD
- USB 3.0 Device port (compatible to USB 2.0)
- 2x USB 2.0 HOST port (compatible to USB 1.1)
- Memory Card slot (supports SD/MMC)
- Composite (CVBS) A/V jack
- Component Y/Pb/Pr jack
- HDMI V1.3 interface
- S/PDIF Optical & Coaxial jack
- DC-IN 12V 2A

### NETWORK FEATURE

- 10/100/1000Mbps Auto-Negotiation Ethernet
- 802.11b/g/n WLAN, up to 300Mbps (supported by optional WLAN USB Adapter)

### FILE SYSTEM SUPPORTED:

- FAT/FAT32/NTFS/HFS+/EXT3

### CONTENT FORMATS SUPPORTED:

- ASF/AVI/BD-ISO/DAT/DVD-ISO/FLV/IFO/MPG/MP4/M2TS/MKV/MOV/ M4V/TP/TS/TRP/WMV/VOB/RM/RMVB, resolution up to 720p/1080i/1080p
- AAC/APE/LC-AAC/HE-AAC/MP2/MP3/FLAC/WAV/MS-ADPCM/OGG Vorbis/PCM/LPCM/ COOK/RA-Lossless/WMA Standard (DRM, and Advanced Profile not supported)
- JPEG/HD JPEG/BMP/GIF/TIF/PNG

### VIDEO CODECS SUPPORTED:

- MPEG-1/MPEG-2/MPEG-4 SP/ASP/AVC/H.264/x264/XviD/DivX/WMV9 (VC-1)/ RealNetworks (RM/RMVB) 8/9/10, up to 720p

### AUDIO OUTPUT SUPPORTED:

- **Pass-through & down-mix to stereo:**
  - Dolby Digital AC3 5.1,
  - Dolby Digital Plus 5.1/7.1
  - Dolby TrueHD 5.1/7.1
  - DTS Digital Surround 5.1
- **Core DTS 5.1 pass-through & down-mix to stereo:**
  - DTS-HD High Resolution 5.1/7.1
  - DTS-HD Master Audio 5.1/7.1
- **Multi-channel pass-through & down-mix to stereo:**
  - AAC 5.1/7.1
  - FLAC 5.1/7.1

### SUBTITLE FORMATS SUPPORTED:

- SRT, SMI, SSA,SUB, IDX+SUB

**Note:** The specifications and design of this product are subject to change without notice.  
\*FullHD Streaming Only

## 5.2 Frequently Asked Questions

**Question 1.** *When I try to disconnect the USB device, I keep on getting “The device ‘Generic volume’ cannot be stopped right now. Try stopping the device again later.” message, what should I do?*

**Answer:**

Close any program that might be accessing data on the player, including Windows Explorer. If it does not work, close all programs and wait for another 20 seconds, then try the green arrow icon again. If it still does not work, you should shut down the player and disconnect the USB cable.

**Question 2.** *I find new file names and folder names that I never created before or they have strange gibberish names.*

**Answer:**

Most likely, the player’s file allocation table (FAT) has been corrupted. This might be due to the player shutting down (due to low battery power) while reading or writing to your computer by the USB connection. Windows and Macintosh often write extra files to the hard disk such as finder.def or System volume info. These are normal and will not do any harm to the player.

**Question 3.** *I used my player to transfer files back and forth between different computers. Will defragmenting the player hard disk do any harm to it?*

**Answer:**

Defragmenting the player hard disk may be useful after having transferred many files to and from the player. It is never harmful to use the defragment on the player. Make sure no other programs are running while using the Windows defragment utility. Make sure you have connected the player with the external power adapter during this procedure.

**Question 4.** *My files have disappeared from the player.*

**Answer:**

Make sure that you browse your files via the correct browser mode which means correct filtered views such as Photos, Music, or Movies.

**Question 5.** *During power on, why does the TV have a short flashing, blue screen or screensaver?*

**Answer:**

This is normal, when the system initializes, it will setup the corresponding parameters so it can output the correct video signal to the TV, during the initializing time, the TV will receive incorrect signals or the signals will not be stable and will cause the TV



screen to flash, some TV's will treat this as no signal, and will display a blue screen or screensaver.

**Question6. Why couldn't the player find the hard disc?**

**Answer:**

Make sure the firmware is installed correctly, and no system partitions on the HDD were deleted. If hard disc failure occurs, please backup your data and reinstall the firmware.

**Question7. Why the transmission speed of my HDD can't up to 3Gbps or higher when connected to PC?**

**Answer:**

Make sure there is a USB 3.0 host controller installed on your PC, the transmission speed is related with HDD itself and also the configuration of PC.

**Question8. Why can't I find my USB drive in file manager?**

**Answer:**

Try to replace a short USB cable or plug in the power cable to your USB drive. You are suggested to plug in one USB drive at the same time.

**Question 9. Where can I register the product I purchased?**

**Answer:**

You can register your product online, please go to <http://acryan.com/web/support/warranty/>

## 6 Copyrights and Trademarks

### Copyrights

**All rights reserved.** No part of this manual may be reproduced, or transmitted in any form or by any means, whether by electronically or mechanically, without the express written permission from the copyright holder.

Copyrighted materials, such as software, music files, or movies, are protected by local law, and may not be illegally copied or used without permission from the copyright owner.

### Trademarks

Microsoft and Windows are registered trademarks of Microsoft Corporation. All other trademarks are property of their respective holders.



Manufactured under license under U.S. Patent #'s:5,451,942; 5,956,674; 5,974,380; 5,978,762; 6,487,535 & other U.S. and worldwide patents issued & pending. DTS and DTS 2.0 + Digital Out are registered trademarks and the DTS logos and Symbol are trademarks of DTS, Inc. © 1996-2008 DTS, Inc. All Rights Reserved.



Manufactured under license from Dolby Laboratories. Dolby and the double-D symbol are trademarks of Dolby Laboratories.

## 7 Warranty

### **What your warranty *does not* cover:**

- Acts of nature, such as fire, static discharge.
- Damage from unauthorized repair, alteration or accident.
- Damage from misuse or neglect.
- A unit that has been modified or incorporated into other products or is used for institutional or other commercial purposes.
- Loss of customer's software, firmware, information, or memory data.
- Improper handling or installation.

## 8 GPL Statement

This product contains free software which is licensed under the GNU General Public License. After you purchase this product, you may procure, modify or distribute the source code of the GPL/LGPL software that is used in this product.

To obtain a copy of our open source software, please contact our support center and we will provide you with a CD-ROM of the source code that is used, charging only the actual expense involved. However, please be noted that we cannot provide guarantee with the source code, and there is also no technical support for the source code from us.

**PLAYON!HD2**

[www.acryan.com](http://www.acryan.com)  
<http://www.acryan.com/web/product/playonhd2/>  
Rev. March 2011

**A.C.Ryan**  
Defining Digital Entertainment