



**User Guide**

**LEITZ**<sup>®</sup>  
**ICON**<sup>™</sup> **MD**  
SMART LABELING SYSTEM<sup>™</sup> **MD**

**Copyright**

© 2014 Esselte IPR AB. All rights reserved.

Leitz, Leitz Icon, Smart Labeling System, Intelligent Label Cartridge are trademarks of Esselte IPR AB or its affiliates.

Mac, iPad, AirPrint, and OS X are trademarks of Apple Inc., registered in the U.S. and other countries.

iOS is a trademark or registered trademark of Cisco in the U.S. and other countries and is used under license to Apple.

Windows and Windows XP are registered trademarks of Microsoft Corporation in the United States and other countries.

Google and Google Cloud Print are trademarks of Google Inc.

Revised 02/2014

# Table of Contents

- About the Leitz Icon Printer ..... 3**
  - Getting to Know the Printer ..... 3
  - Status Lights ..... 3**
    - Power Status Light ..... 3
    - Wireless Status Light ..... 3
  - Getting to Know the Intelligent Label Cartridge ..... 4
  - System Requirements ..... 4
  - Developer Information ..... 4
- About the Software ..... 4**
- Getting Started ..... 5**
  - Installing the Software ..... 5
    - Installing the Software ..... 5
    - Installing the iPad App ..... 5
  - Connecting the Power ..... 5
  - Connecting the Printer to Your Computer ..... 6
    - Connecting the Printer Using USB ..... 6
    - Connecting the Printer Using Access Point (Soft AP) Mode ..... 6
    - Connecting the Printer Using Your Wireless Network ..... 7
      - Connecting the Printer to Your Wireless Network ..... 7
      - Adding the Printer to Your Computer ..... 8
  - Loading Labels ..... 9
    - Unloading Labels ..... 10
  - Printing Labels ..... 11
- Using the Leitz Icon Control Panel ..... 11**
  - Accessing the Leitz Icon Control Panel ..... 11
  - Viewing the Printer Status ..... 12

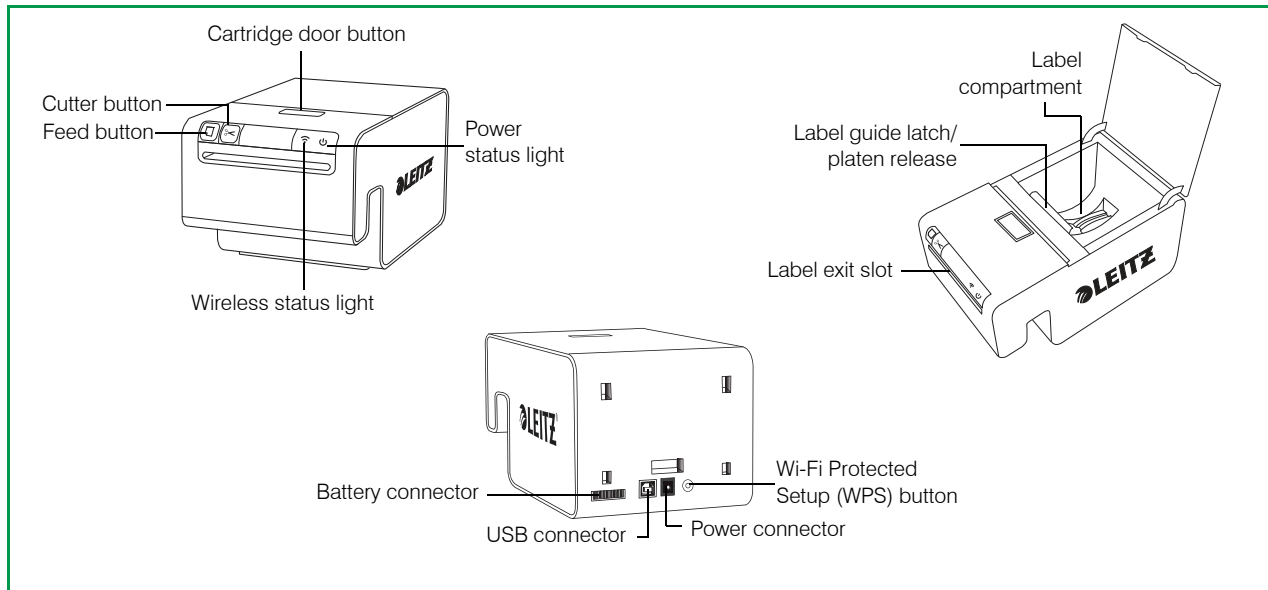
Changing the Network Settings . . . . .	12
Using Google Cloud Print . . . . .	12
Using AirPrint . . . . .	13
Viewing Label Cartridge Information . . . . .	13
Changing the User Name and Password . . . . .	13
<b>Using the Battery . . . . .</b>	<b>14</b>
Connecting the Battery . . . . .	14
Charging the Battery . . . . .	14
Disconnecting the Battery . . . . .	15
<b>Caring for the Printer . . . . .</b>	<b>15</b>
<b>Troubleshooting . . . . .</b>	<b>16</b>
Printer Errors . . . . .	16
Clearing Label Jams . . . . .	16
Printing a Test Strip . . . . .	17
Resetting the Printer . . . . .	17
Contacting Customer Support . . . . .	17
<b>Technical Information . . . . .</b>	<b>18</b>
Technical Specifications . . . . .	18
Warranty and Disposal . . . . .	19
<b>Terms and Conditions of Warranty. . . . .</b>	<b>19</b>
Furthermore, the warranty is subject to the following conditions:. . . . .	19
<b>Disposal of Old Equipment . . . . .</b>	<b>19</b>
Third Party Software . . . . .	20
Safety Information. . . . .	20
<b>Intended Use . . . . .</b>	<b>20</b>
<b>Precautions for Setup . . . . .</b>	<b>20</b>
<b>Precautions for Operation. . . . .</b>	<b>21</b>
<b>Precautions for Cleaning, Transport, and Storage . . . . .</b>	<b>21</b>

## About the Leitz Icon Printer

The Leitz Icon printer is the heart of your Icon Smart Labelling System. Using the printer, you can print a wide variety of labels, name and visitor badges, lever arch labels, and more. Because the printer can cut labels to size, you can use a single label cartridge to print many different types of labels, minimising the need to switch cartridges. When you do need to change cartridges, you have a choice of paper or plastic self-adhesive labels, as well as non-adhesive card stock. All label types are available in multiple widths to meet a variety of applications.

The printer connects to your computer wirelessly or using the included USB cable. You can also print labels from your iPad using the Leitz Icon app or print remotely using Google Cloud Print.

### Getting to Know the Printer



### Status Lights

The printer has a power status light and a wireless status light. These two lights indicate the current status of the printer.

For information about printer errors indicated through the status lights, see **Printer Errors** on page 16.

#### Power Status Light

The power status light indicates the power status of the printer.

Status Light	Printer Status
Solid	Printer is receiving power
Dimmed	Printer is in sleep mode
Off	Printer is not receiving power

#### Wireless Status Light

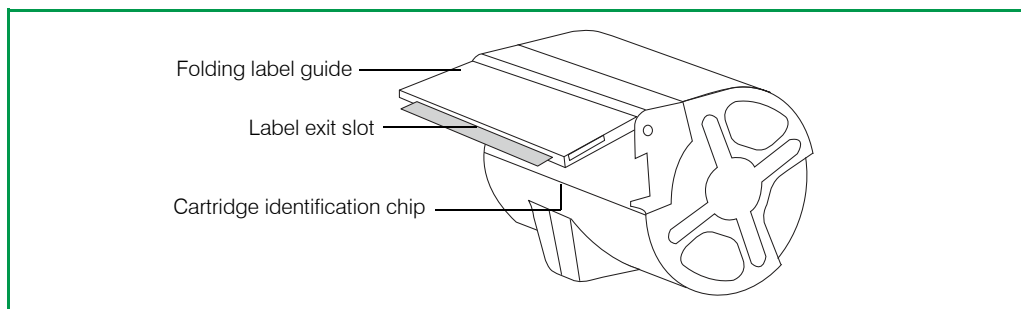
The wireless status light indicates the wireless connection status of the printer.

Status Light	Printer Status
Solid	Printer is connected wirelessly
Flashing	Printer is waiting for a wireless connection
Off	Printer is not connected wirelessly

## Getting to Know the Intelligent Label Cartridge

Leitz Icon Intelligent Label Cartridges are easy to load into the printer and are recyclable\*. Each cartridge has a folding label guide that opens to load and print labels and closes to protect labels during storage. The Intelligent Label Cartridge uses a special cartridge identification chip to relay information about the label cartridge, such as the type and size of the labels, the capacity of the label cartridge, and the number of labels remaining, to the software.

**NOTE** Avoid handling the cartridge identification chip as this may damage the chip. If the chip becomes damaged, the label cartridge may not work properly.



\*Intelligent Label Cartridges may not be recyclable in your area.

## System Requirements

The Leitz Icon Software is available for both Mac and Windows. In addition, the Leitz Icon app is available for designing and printing labels from your iPad.

Operating System	Minimum System Requirements
Windows	Windows XP or Windows 7 or later
Mac	Mac OS X v10.7 or later
iPad	Apple iOS 7 or later

## Developer Information

A comprehensive Software Developer's Kit is being developed for the Leitz Icon printer. The SDK is not yet available at the time of this writing. To check the availability of the SDK, visit the Leitz website at [www.leitz.com](http://www.leitz.com).

The Leitz Icon printer is fully supported as a standard printer on Windows, Mac OS, and iOS through AirPrint. The main difference in printing to the Leitz Icon printer is the list of paper sizes. The paper sizes required for the Leitz Icon printer may differ from the paper sizes used when printing to other printers.

## About the Software

For detailed information about the Leitz Icon Software for Mac, Windows, or iPad, refer to the **Leitz Icon Software Help**.

# Getting Started


Complete the procedures in the following sections to get started with your Leitz Icon printer.

- **Installing the Software**
- **Connecting the Power**
- **Connecting the Printer to Your Computer**
- **Loading Labels**
- **Printing Labels**

## Installing the Software

Visit the Leitz website at [www.leitz.com](http://www.leitz.com) to download the latest version of the software or the Leitz Icon app for the iPad.

### Installing the Software

1. Download the latest version of the Leitz Icon Software from the Leitz website.
2. Double-click  to start the installer.
3. Follow the on-screen instructions to install the software.

### Installing the iPad App

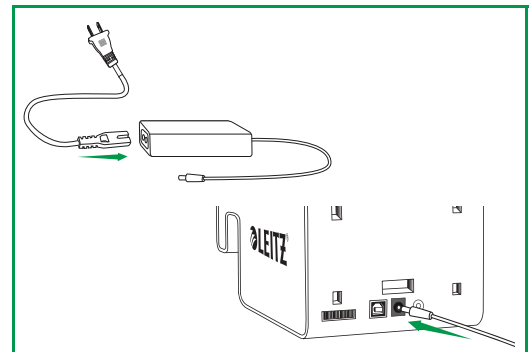
1. Open a web browser on your iPad.
2. In the address bar, type [www.leitz.com](http://www.leitz.com) to visit the Leitz website.
3. Click the link for the iPad app.  
The Apple App Store automatically launches and displays the installation screen for the Leitz Icon app.
4. Click **Install**.

## Connecting the Power

The printer is powered using the included AC power adapter and power cord.

1. Plug the power cord into the power adapter.
2. Plug the power adapter into the power connector on the back of the printer.
3. Plug the power cord into an available power outlet.

An optional, external, rechargeable battery is available for using the printer as a portable device. Refer to the **Using the Battery** on page 14 for information on using the optional battery.



## Connecting the Printer to Your Computer

Several options are available for connecting the Leitz Icon printer to your computer.

- Connect the printer using USB
- Connect the printer using access point (Soft AP) mode
- Connect the printer using your wireless network

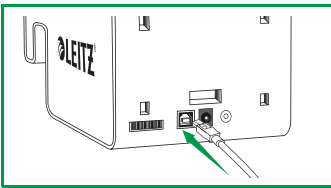
**NOTE** Software installation must be complete before connecting the printer to your computer.

### Connecting the Printer Using USB

You can connect the printer directly to your computer using the included USB cable.

**NOTE** Software installation must be complete before connecting the printer to your computer.

1. Plug the USB cable into the USB connector located on the back of the printer.



2. Plug the other end of the USB cable into an available USB port on your computer.  
After a brief period, the printer is available in the printer list.

### Connecting the Printer Using Access Point (Soft AP) Mode

The printer can act as its own Access Point, or Soft AP, allowing a direct wireless connection between the printer and your computer. Using access point mode, you can wirelessly connect the printer to your computer without connecting to an existing wireless network.

#### To connect the printer using access point mode

1. On your computer, search for available wireless networks.  
For information on searching for wireless networks, see the documentation for your computer.
2. From the list of available networks, select **ICON\_xxyyzz**, where xxyyzz is a combination of letters and numbers that uniquely identify your printer from other Icon printers in the area.
3. Click **Join** or **Connect**.
4. Once connected, start a web browser on your computer.
5. In the address bar, type **192.168.1.1** and then press **Enter**.
6. Enter your user name and password in the **User name** and **Password** boxes.  
The default user name and password are as follows.  
**User name:** Admin  
**Password:** password  
Changing the user name and password is recommended. See the **Changing the User Name and Password** on page 13 for information on changing the user name and password.
7. Click **OK**.  
The Printer Setup Wizard starts.
8. Click **Soft AP**.  
The printer is connected to your computer in access point mode and the Leitz Icon Control Panel is displayed.



## Connecting the Printer Using Your Wireless Network

Connecting the printer to your computer using your wireless network is a two-step process.

1. Connect the printer to your wireless network.
2. Add the printer to your computer.

### Connecting the Printer to Your Wireless Network

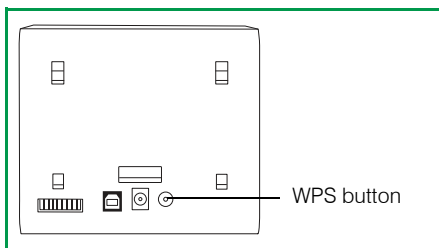
You can connect the printer to your wireless network using WPS (Wi-Fi Protected Setup) or the Leitz Icon Control Panel.

#### Connecting the Printer Using WPS

You can quickly connect the printer to your wireless network using WPS.

**NOTE** To connect your printer to your wireless network using WPS, you must use a router with WPS support.

1. Press the WPS button located on the back of the printer.  
The Wireless status light begins to blink.



2. Within two minutes, press the WPS button on your router.  
Refer to the router documentation for instructions on locating the WPS button.

When the printer is connected to your wireless network, the Wireless status light stops blinking and turns solid green.

#### Connecting the Printer Using the Leitz Icon Control Panel

The Leitz Icon printer includes a built-in web server. The web server appears in your web browser as the Leitz Icon Control Panel. If your router does not support WPS or if you have trouble connecting your printer to your wireless network using WPS, you can use the Leitz Icon Control Panel to connect the printer to your wireless network.

1. On your computer, search for available wireless networks.  
For information on searching for wireless networks, see the documentation for your computer.
2. From the list of available networks, select **ICON\_xxyyzz**, where xxyyzz is a combination of letters and numbers that uniquely identify your printer from other Icon printers in the area.
3. Click **Join** or **Connect**.
4. Once connected, start a web browser on your computer.
5. In the address bar, type **192.168.1.1** and then press **Enter**.
6. Enter your user name and password in the **User name** and **Password** boxes.

The default user name and password are as follows.

**User name:** Admin

**Password:** password

Changing the user name and password is recommended. See the **Changing the User Name and Password** on page 13 for information on changing the user name and password.

7. Click **OK**.  
The Printer Setup Wizard starts.
8. Follow the instructions in the Printer Setup Wizard to connect the printer to your wireless network.

## Adding the Printer to Your Computer

If you connect the printer to your computer over your wireless network, you must also add the printer to your computer. If you connect the printer to your computer using the included USB cable, the printer is added to your computer automatically.

### Adding the Printer (Windows)

This section describes how to add the printer in Windows 8 and Windows 7. If you are using a different version of Windows, refer to the Windows documentation for information on adding a network printer.

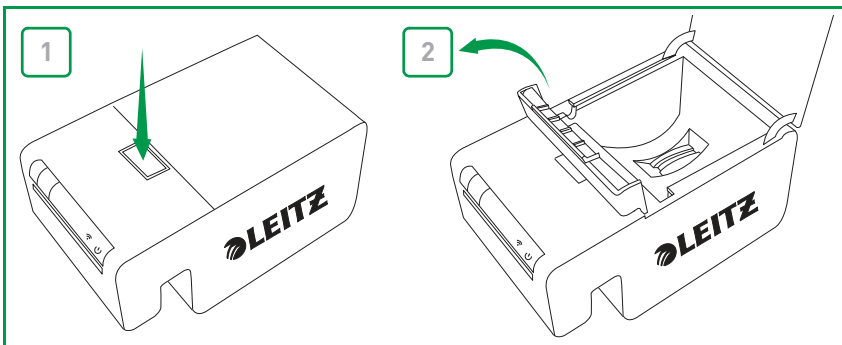
1. Click **Start**, click **Control Panel**, click **Hardware and Sound**, and then click **Devices and Printers**.
2. Click **Add a printer**.  
The Add Printer dialog box appears.
3. **(Windows 7 Only)** Select **Add a network, wireless, or Bluetooth printer**.
4. In the list of available printers, click **Leitz Icon**, and then click **Next**.
5. Follow the on-screen instructions to finish adding the printer.
6. Click **Finish**.  
The Leitz Icon printer is now available for printing.

### Adding the Printer (Mac)

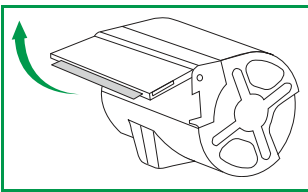
1. Start **System Preferences**.
2. Under **Hardware**, click **Print & Scan**.
3. Under the printer list, click **+**, and then click **Add Printer or Scanner**.  
The Add dialog box appears.
4. Click **Leitz Icon** in the list of available printers.
5. **(Optional)** Type a name and location for the printer in the **Printer name** and **Location** boxes.
6. Click **Add**.  
The printer is added to the printer list and is now available for printing.

## Loading Labels

1. Push the button on the top of the printer to open the cartridge door.
2. Lift the label guide latch as shown.

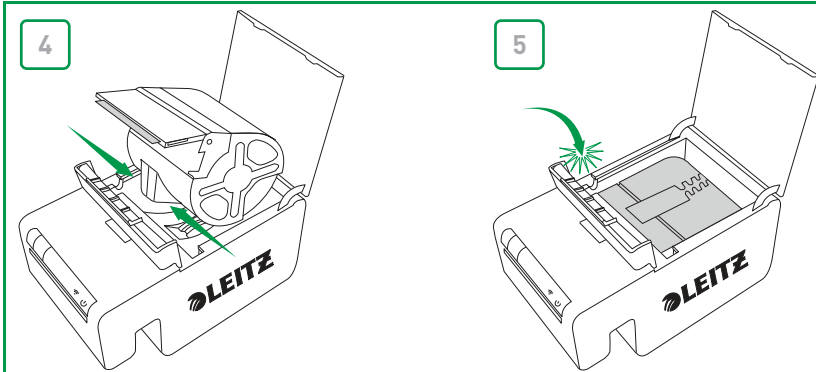


3. Pull open the fold-up label guide on the label cartridge.



**NOTE** Avoid handling the cartridge identification chip as this may damage the chip. If the chip becomes damaged, the label cartridge may not work properly.

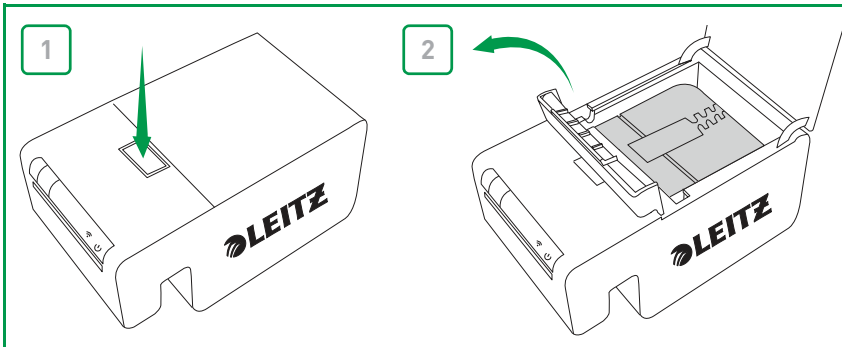
4. Place the cartridge into the printer as shown.  
Make sure the cartridge is centered and seated securely in the printer.
5. Lower the label guide latch.



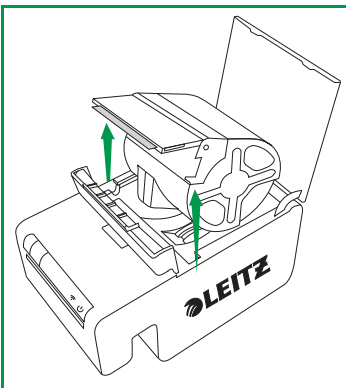
6. Close the cartridge door.  
The printer automatically feeds the labels to the starting position.

## Unloading Labels

1. Push the button on the top of the printer to open the cartridge door.
2. Lift the label guide latch as shown.

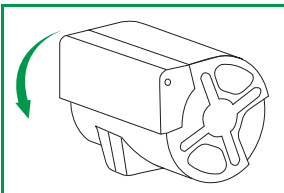


3. Carefully lift the cartridge from the label compartment.



**NOTE** Avoid handling the cartridge identification chip as this may damage the chip. If the chip becomes damaged, the label cartridge may not work properly.

4. Close the folding label guide on the label cartridge.




**NOTE** Do not push labels back into the label cartridge. Doing so can damage the labels, and render the labels unusable or cause the labels to jam inside the printer. If any labels are protruding from the label exit slot, use a pair of scissors to cut off the excess.

## Printing Labels

Using the Leitz Icon printer, you can print a wide variety of self-adhesive labels as well as non-adhesive name and visitor badges, lever arch labels, and appointment cards.

For detailed information about printing labels using the Leitz Icon Software, refer to the ***Leitz Icon Software Help***.

### To print a label

1. Click  to start Leitz Icon Software.
2. On the label selection pane, click the label category that contains the type of label you want to create.  
The label selection pane expands to display the label types for the selected category.
3. Click the label type that you want to create.  
The label selection pane expands again to display the available templates for the selected label type.
4. Click the label template that you want to use to create your label.  
The selected label is displayed in the label workspace.
5. Click once on the displayed label and type the text for the label.
6. If desired, use the formatting pane to change the text formatting.
7. Click **Print** to print the label.

## Using the Leitz Icon Control Panel

You can use the Leitz Icon Control Panel to connect your printer to your wireless network, view and change your connection, Google Cloud Print, and AirPrint settings, view the status of the printer, and view information about the label cartridge inserted in the printer.

See ***Connecting the Printer Using the Leitz Icon Control Panel*** on page 7 for information about using the Leitz Icon Control Panel to connect the printer to your wireless network.

## Accessing the Leitz Icon Control Panel

You can access the Leitz Icon Control Panel from any web browser.

### To access the Leitz Icon Control Panel

1. On your computer, search for available wireless networks.  
For information on searching for wireless networks, see the documentation for your computer.
2. From the list of available networks, select **ICON\_xxyzz**, where xxyzz is a combination of letters and numbers that uniquely identify your printer from other Icon printers in the area.
3. Click **Join** or **Connect**.
4. Once connected, start a web browser on your computer.
5. In the address bar, type **192.168.1.1** and then press **Enter**.
6. Enter your user name and password in the **User name** and **Password** boxes.  
The default user name and password are as follows.  
**User name:** Admin  
**Password:** password  
See ***Changing the User Name and Password*** on page 13 for information on changing the user name and password.
7. Click **OK**.

## Viewing the Printer Status

The Printer Status page displays the network status and settings for the printer.

### To view the printer status

- In the Leitz Icon Control Panel, click **Printer Status**.  
The Printer Status page is displayed.

## Changing the Network Settings

You can make changes to the network settings using the Setup Wizard.

### To change the network settings

1. In the Leitz Icon Control Panel, click **Setup Wizard**.  
The Setup Wizard starts and guides you through the process of changing your settings.
2. Follow the instructions in the wizard to change your network settings.
3. Click **Connect** to save the changes and connect to your network using the new settings.

## Using Google Cloud Print

You can use Google Cloud Print to print to the Leitz Icon printer from the web or from your Apple or Android mobile device. If you do not already have a Google account, you will need to create one before you can set up your printer with Google Cloud Print.

**NOTE** To set up your printer with Google Cloud Print, your printer must be first be connected to your wireless network.

To set up your printer with Google Cloud Print, you must first do the following:

- Connect your printer to your wireless network
- Enable 2-step verification for your Google account  
Refer to the Google Help for information on setting up 2-step verification, <https://support.google.com/accounts/answer/185839>.
- Generate an application specific password for Google Cloud Print  
Refer to the Google Help for information on generating an application specific password, <https://support.google.com/accounts/answer/185833>.

### To register your printer with Google Cloud Print

1. In the Leitz Icon Control Panel, click **Setup Google Cloud Print**.  
The Setup Google Cloud Print page is displayed.
2. Type a location for the printer in the **Printer location** box.
3. Type your Google user name in the **User Name** box.
4. Type your application-specific password for Google Cloud Print in the **Password** box.
5. Click **Register printer with Google Cloud Print**.  
After a short delay while the printer communicates with the Google servers, your printer is ready to print labels using Google Cloud Print.

### To unregister your printer with Google Cloud Print

1. In the Leitz Icon Control Panel, click **Setup Google Cloud Print**.
2. Click **Unregister printer with Google Cloud Print**.  
The printer is no longer registered with Google Cloud Print.

## Using AirPrint

You can use AirPrint to print to the Leitz Icon printer from your iPad. AirPrint is enabled by default. You can change the AirPrint settings or disable AirPrint using the Leitz Icon Control Panel.

**NOTE** To set up your printer with AirPrint, your printer must be first be connected to your wireless network.

### To change the AirPrint settings

1. In the Leitz Icon Control Panel, click **AirPrint Settings**.  
The AirPrint Settings page is displayed.
2. Make any desired changes to the network settings.
3. Click **Save**.

### To disable AirPrint on the printer

- In the Leitz Icon Control Panel, clear the **Enable AirPrint to allow printing from iPad** check box.

## Viewing Label Cartridge Information

You can view information about the label cartridge currently in the printer, such as the type and size of the labels, the capacity of the label cartridge, the number of labels remaining, and the item number to use for reordering labels.

### To view label cartridge information

- In the Leitz Icon Control Panel, click **Cartridge Information**.  
The Cartridge Information page is displayed.

## Changing the User Name and Password

You can change the user name and password used for logging into the Leitz Icon Control Panel. Changing the user name and password is recommended.

The default user name and password are as follows.

**User name:** Admin  
**Password:** password

### To change the user name and password

1. In the Leitz Icon Control Panel, click **Administration**.  
The Administration page is displayed.
2. Type a new user name in the **User Name** box.
3. Type a new password in the **Password** box.
4. Click **Save**.

## Using the Battery

An optional, external, rechargeable battery (part number 7002-00-00) is available for using the printer as a portable device. Visit the Leitz website at [www.leitz.com](http://www.leitz.com) for information about ordering the optional battery.

### Connecting the Battery

The battery connects to the back of the printer. The four guides on the battery help to align the battery for a secure connection to the printer.

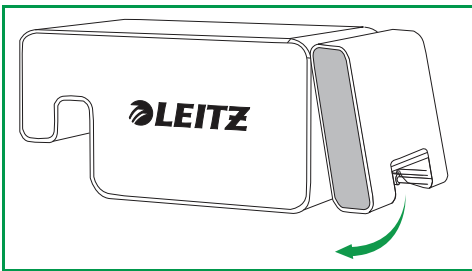
#### To connect the battery

1. Tilt the battery and slide the top hooks into the top two slots on the back of the printer as shown.



2. Rotate the bottom of the battery downwards toward the bottom of the printer until the bottom guides on the battery are aligned with the bottom two slots on the back of the printer.

Make sure the connector on the bottom corner of the battery aligns with the battery connector on the back of the printer.



3. Gently press the bottom of the battery in toward the printer until the battery snaps into place.



### Charging the Battery

The battery charges when connected to the printer and the printer is connected to a power source. Charging pauses temporarily during printing. The battery can be used portably for approximately 4 hours, printing up to 500 address labels, on a single charge. The charge level of the battery is displayed in the Leitz Icon Software print pane.

#### To charge the battery

1. Connect the battery to the printer as described in **Connecting the Battery**.
2. Plug the power cord into the power adapter.
3. Plug the power adapter into the power connector on the back of the printer.
4. Plug the power cord into an available power outlet.

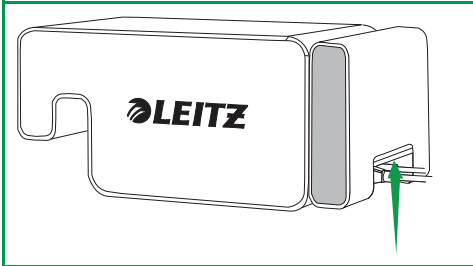


## Disconnecting the Battery

When disconnected from the printer, the battery should be stored in a cool, dry place.

### To disconnect the battery

1. Grip the battery with your thumb on top and one or more fingers on the battery latch.



2. Squeeze the battery latch open and tilt the bottom part of the battery away from the printer as shown.



3. Rotate the bottom of the battery up and away from the printer, and then pull the top part of the battery away from the printer to fully disconnect the battery.



## Caring for the Printer

The Leitz Icon printer requires very little maintenance. You may occasionally need to clean the label cartridge compartment, the exterior of the printer, and the paper path.

If you experience lighter than normal printing, use the included cleaning card to clean the paper path. Visit the Leitz website at [www.leitz.com](http://www.leitz.com) for information about ordering additional cleaning cards.

### To clean the label cartridge compartment

1. Push the button on the top of the printer to open the cartridge door.
2. Wipe the label cartridge compartment with a clean, dry, lint-free cloth.

### To clean the exterior of the printer


- Wipe the exterior of the printer with a soft, damp cloth.

**NOTE** Do not use cleaning tissues or chemical substances which might damage the surface

**To use the cleaning card**

1. Push the button on the top of the printer to open the cartridge door.
2. Remove the label cartridge as described in **Unloading Labels** on page 10.
3. With the label guide latch in the open position, insert the cleaning card into the label feed slot.

**NOTE** Keep the cartridge door open while using the cleaning card.

4. Press and hold  until the cleaning card exits through the label exit slot.
5. Flip the cleaning card over and repeat steps 3 and 4.

## Troubleshooting

This section includes information about what to do if you encounter a problem with your printer. If you need further assistance, please visit the Customer Support section of the Leitz website at [www.leitz.com](http://www.leitz.com).

### Printer Errors

In addition to indicating the power and wireless connection status of the printer, the power and wireless status lights can also indicate printer errors and other information.

Error/Status	Power Status Light	Wireless Status Light
Printer out of paper	Flashing once per second	As is; indicates wireless status
Cutter jam	Both status lights flash simultaneously twice per second	
Label jam	Both status lights flash simultaneously once per second	
Invalid or unreadable label cartridge	Status lights flash alternately; each light flashes once per second	
Printer self-test mode	Flashing twice per second	Off
WPS connection in progress	On (Solid)	Flashing once per second

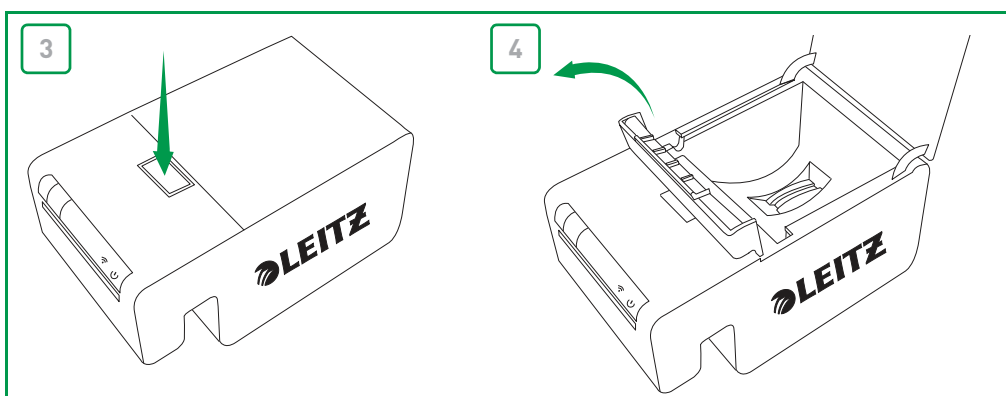
For information about the power and wireless connection status, see **Status Lights** on page 3.

### Clearing Label Jams

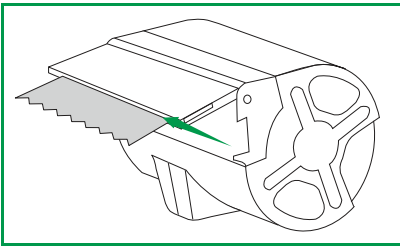
The label guide latch also acts as a platen release.

**To clear a label jam**

1. Disconnect the power cord and battery from the printer to power off the printer.
2. Tear off any labels that have already fed through the label exit slot.
3. Push the button on the top of the printer to open the cartridge door.
4. Lift the label guide latch/platen release as shown.



5. Remove the label cartridge from the cartridge compartment, pulling the extruded labels from the label feed slot.
6. Use a pair of scissors to cut off any labels that have exited the label cartridge.







If you think a partial label may be stuck in the printer, you can access the platen and cutter by removing the front panel of the printer. See the video at [www.leitz.com](http://www.leitz.com) for instructions on removing the printer panel.



**CAUTION:** The cutter blade is exposed when the front panel of the printer is removed. The blade is extremely sharp. Use caution when working with or near the cutter blade.


## Printing a Test Strip

If you are having trouble printing or you see print quality issues, you can print a test strip to check the printer functionality.

### To print a test strip

1. Disconnect the power cord and battery from the printer to power off the printer.
2. With the printer unplugged, press and hold .
3. While holding , connect the power cord to the printer.
4. Once the power status light begins to flash, release .
5. Press and hold .
 

The test pattern begins to print.
6. To stop printing the test pattern, release .
7. Press, hold, and release  again to print each additional test pattern.
 

A total of 5 different test patterns will print.
8. Press  to cut the printed test strip.
9. To return to normal printing, disconnect the power cord from the printer and then reconnect the power cord to the printer.

## Resetting the Printer

You can reset the printer to the default settings. Resetting the printer reverts all settings to the default settings. Any settings, including wireless settings, that have been changed are lost.

### To reset the printer

1. Disconnect the power cord and battery from the printer to power off the printer.
2. With the printer off, press and hold the WPS button and reconnect the power cord to the printer.
3. Continue to hold the WPS button for five seconds, and then release the button.

## Contacting Customer Support

Visit the Leitz website at [www.leitz.com](http://www.leitz.com) for information about contacting customer support.

## Technical Information

### Technical Specifications

The following table lists the technical specifications of the Leitz Icon printer.

<b>Power</b>		24 V DC, 3.75 A	
<b>Printer type</b>		Direct thermal	
<b>Resolution</b>		300 dots per inch (DPI)	
<b>Print width:</b>		960 dots (81.3 mm/3.2 inches)	
<b>Maximum paper width</b>		91 mm (3.58 inches)	
<b>Interface</b>	Wi-Fi	2.4GHz, 802.11b/g	
	USB	Full Speed USB 2.0 Printer Class Device	
<b>Maximum print speed</b>		200 labels per minute (4-line standard address label)	
<b>Duty Cycle</b>	Printer	2000 labels per hour	
	Cutter	1800 cuts per hour	
<b>Size</b>	Printer	Height	112.25 mm (4.42 inches)
		Width	128.85 mm (5.07 inches)
		Depth	217.25 mm (8.55 inches)
	Battery	Height	111.25 mm (4.38 inches)
		Width	128.85 mm (5.07 inches)
		Depth	49.54 mm (1.95 inches)
	Printer with Battery attached	Height	112.25 mm (4.42 inches)
		Width	128.85 mm (5.07 inches)
		Depth	257.75mm (10.15 inches)
<b>Weight</b>	Printer	1.27 kg (2.8 lbs)	
	Battery	496.5 g (1.09 lbs)	

## Warranty and Disposal

Esselte offers a 2 year warranty for the Leitz Icon Smart Labeling System connected to the date of purchase.

\*This warranty can be extended by one year upon registration at: [www.leitz.com/icon](http://www.leitz.com/icon)

In case of problems or questions, please contact:

### UK & Ireland

ESSELTE UK Ltd.

Waterside House, Cowley Business Park,

Uxbridge, Middlesex UB8 2HP

UNITED KINGDOM

Tel.: 0845 678 1801

Fax: 01895 878901

[www.esselte.co.uk](http://www.esselte.co.uk)

### Terms and Conditions of Warranty

1. Each device is guaranteed against all defects in material and/or workmanship for a period of 2 (2+1\*) years from the date of purchase.
2. No claim will be accepted without a written description of the fault.
3. All devices for repair are to be returned to Esselte To make a claim under the warranty, the devices must be returned carriage paid to ESSELTE, together with this warranty card and in adequate packaging. No liability will be accepted by ESSELTE for goods damaged during transportation as a result of unsuitable packaging.
4. Under this warranty we undertake to replace the damaged parts and carry out the appropriate repair work.
5. This manufacturer's warranty is granted by us voluntarily and in addition to the seller's statutory liability for material defects\*\*. The seller's statutory liability for material defects is not limited by this manufacturer's warranty.

\*\*The customer's statutory right, applicable in the case of claims made solely against the seller in the event of a material defect and under certain other conditions, to claim remedial action, a price reduction, rescission of the purchase agreement and/or compensation within 24 months of handover. Another important precondition is that the fault must have already existed when the Leitz device was handed over. The onus is on the customer to provide proof of such a fault after six months have elapsed. This liability for material defects does not entitle the customer to make a claim against the manufacturer.

### Furthermore, the warranty is subject to the following conditions:

- a. The warranty certificate must have been completed by the salesperson (sales date and company stamp).
- b. The device must have been used strictly in accordance with the operating instructions since its purchase.
- c. The identified damage must not have been caused by an accident, misuse, alteration or improper use.
- d. Without prejudice to any claims arising from the Product Liability Act, ESSELTE does not accept liability for damage, loss or expense of any kind, resulting from, caused by or linked to a fault in the device or its accessories.

### Disposal of Old Equipment

This symbol of a crossed out waste bin on a product, its packaging and/or accompanying documents means that the product is subject to the European directive 2002/96/EC as well as national law for implementation of the directive. Directive and law prescribe that electrical and electronic products must not be disposed of with household waste.

The customer must dispose of the product by delivering it to a designated station for collection, treatment and recycling of waste electrical and electronic equipment. The correct disposal of your old appliance is free of charge and will help prevent potential negative consequences for the environment and human health.

For more information about disposing your old appliance, contact your city office, waste disposal service, or the shop where you purchased the product.



## Third Party Software

Firmware incorporated into this product includes third party copyrighted software, including FreeRTOS version 7.3.0 ("FreeRTOS Software"), which is licensed under a modified GNU General Public License version 2 with exception text (the "FreeRTOS License") and not under Esselte's End User License Agreement. Information about the FreeRTOS Software is available at [www.freertos.org](http://www.freertos.org) and a copy of the FreeRTOS License is available at [www.freertos.org/license.txt](http://www.freertos.org/license.txt). Esselte incorporates the FreeRTOS Software in accordance with the special exemption under the License. In accordance with the license requirements, the FreeRTOS Software source code may be downloaded at no charge from the Leitz website at [www.leitz.com](http://www.leitz.com) (or obtained on CD for a nominal charge via request to the same [www.leitz.com](http://www.leitz.com) within three years of the date of purchase).

Third party copyrighted software also includes Tinysvcmdns, licensed under the 3-clause ("modified") BSD License and copyright (C) 2011 Darell Tan. The following statements pertain to Tinysvcmdns: "Redistribution and use in source and binary forms, with or without modification, are permitted provided that the following conditions are met: (1) Redistributions of source code must retain the above copyright notice, this list of conditions and the following disclaimer. (2) Redistributions in binary form must reproduce the above copyright notice, this list of conditions and the following disclaimer in the documentation and/or other materials provided with the distribution. (3)The name of the author may not be used to endorse or promote products derived from this software without specific prior written permission. THIS SOFTWARE IS PROVIDED BY THE AUTHOR "AS IS" AND ANY EXPRESS OR IMPLIED WARRANTIES, INCLUDING, BUT NOT LIMITED TO, THE IMPLIED WARRANTIES OF MERCHANTABILITY AND FITNESS FOR A PARTICULAR PURPOSE ARE DISCLAIMED. IN NO EVENT SHALL THE AUTHOR BE LIABLE FOR ANY DIRECT, INDIRECT, INCIDENTAL, SPECIAL, EXEMPLARY, OR CONSEQUENTIAL DAMAGES (INCLUDING, BUT NOT LIMITED TO, PROCUREMENT OF SUBSTITUTE GOODS OR SERVICES; LOSS OF USE, DATA, OR PROFITS; OR BUSINESS INTERRUPTION) HOWEVER CAUSED AND ON ANY THEORY OF LIABILITY, WHETHER IN CONTRACT, STRICT LIABILITY, OR TORT (INCLUDING NEGLIGENCE OR OTHERWISE) ARISING IN ANY WAY OUT OF THE USE OF THIS SOFTWARE, EVEN IF ADVISED OF THE POSSIBILITY OF SUCH DAMAGE."

Third party copyrighted software also includes Json.Net, licensed under the MIT License and copyright © 2007 James Newton-King. The following statements pertain to Json.Net: "Permission is hereby granted, free of charge, to any person obtaining a copy of this software [Json.Net] and associated documentation files (the "Software"), to deal in the Software without restriction, including without limitation the rights to use, copy, modify, merge, publish, distribute, sublicense, and/or sell copies of the Software, and to permit persons to whom the Software is furnished to do so, subject to the following conditions: The above copyright notice and this permission notice shall be included in all copies or substantial portions of the Software. THE SOFTWARE IS PROVIDED "AS IS", WITHOUT WARRANTY OF ANY KIND, EXPRESS OR IMPLIED, INCLUDING BUT NOT LIMITED TO THE WARRANTIES OF MERCHANTABILITY, FITNESS FOR A PARTICULAR PURPOSE AND NONINFRINGEMENT. IN NO EVENT SHALL THE AUTHORS OR COPYRIGHT HOLDERS BE LIABLE FOR ANY CLAIM, DAMAGES OR OTHER LIABILITY, WHETHER IN AN ACTION OF CONTRACT, TORT OR OTHERWISE, ARISING FROM, OUT OF OR IN CONNECTION WITH THE SOFTWARE OR THE USE OR OTHER DEALINGS IN THE SOFTWARE."

With respect solely to the third party software, no warranty (either expressed or implied) is provided, to the extent permitted by applicable law. Copying, distribution, and modification of the third party software is solely at your own risk and is subject to the terms of its License. Esselte is not responsible for any such modification. Esselte reserves the right to not support any product in which you have or have attempted to modify software supplied by Esselte.

## Safety Information

### Intended Use

This device has been developed for printing labels and similar items using Leitz Icon Intelligent Label Cartridges. The printer should be used only for this purpose, as described in this user guide.

### Precautions for Setup

- The printer is for indoor use only. Do not use outdoors.
- The printer power adapter is designed for 100 - 240 V, 50/60 Hz. Verify the outlet voltage is within this range before plugging in your power adapter.
- Place the device close to an accessible power outlet. Make sure the power cord can be easily disconnected from the power outlet at all times.
- Protect the power cord and the power adapter from being strained, pinched, or buckled.

- Place the cord out of walkways to prevent people from tripping over the cord.
- Use only the power adapter provided with the printer. Use of an incorrect power adapter may cause overheating or fire.
- Do not bend or place a heavy object on the power cord as it could damage the cord and result in risk of electric shock or fire.
- Do not use the power cord if damaged or frayed.
- Be sure to hold only the connector end of the power cord when disconnecting. Repeated pulling on the cord could damage the cord.

### Precautions for Operation

- Protect the printer from moisture and do not operate if power cord or plug are defective.
- Never touch a power plug with wet hands.
- Do not place anything on top of the printer and do not insert anything into the label exit slot.
- Never insert objects of any kind into the printer as they may harm the mechanisms or electrical components within the printer.
- Never spill liquid of any kind on the printer.
- Do not use the printer near water or in extreme humidity.
- Do not drop or hit the printer.

### Precautions for Cleaning, Transport, and Storage

- Use a soft, damp cloth and to clean the exterior of the printer. Do not use cleaning tissues or chemical substances which might damage the surface.
- The printer is designed to allow access to the paper path for clearing label jams. Refer to the **Clearing Label Jams** on page 16 for instructions on clearing label jams. Do not open the printer housing or try to repair the printer in any other way. For information on printer repair, contact Customer Support.
- The thermal print head may become very hot while printing. If you need to clear a label jam, unplug the printer and allow sufficient time for the print head to cool before accessing the paper path.
- CAUTION: The cutter blade is sharp and may be exposed when accessing the paper path. Be careful not to touch the cutter blade.
- This printer contains no user-serviceable parts. Do not attempt to service the printer yourself. Repair service should be performed by a trained technician.