

The logo for IntelliDocX features a stylized icon of three overlapping document pages on the left, followed by the text "IntelliDocX" in a white, sans-serif font. The background of the slide is a dark blue globe with a network of glowing blue lines and nodes, and a faint image of a man in a suit on the right side.

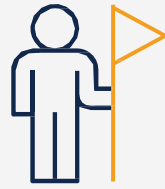
IntelliDocX

EMEA

Intelligent Google Cloud[®]
Content Services for SAP[®]



Founded in
2012



Led by SAP/MS ECM & BPM industry pioneers (Founders of ERP-Link Corp & Norikkon LLC)



Global Software Vendor with a Partner Ecosystem that enables our Customers with extended solutions & product services



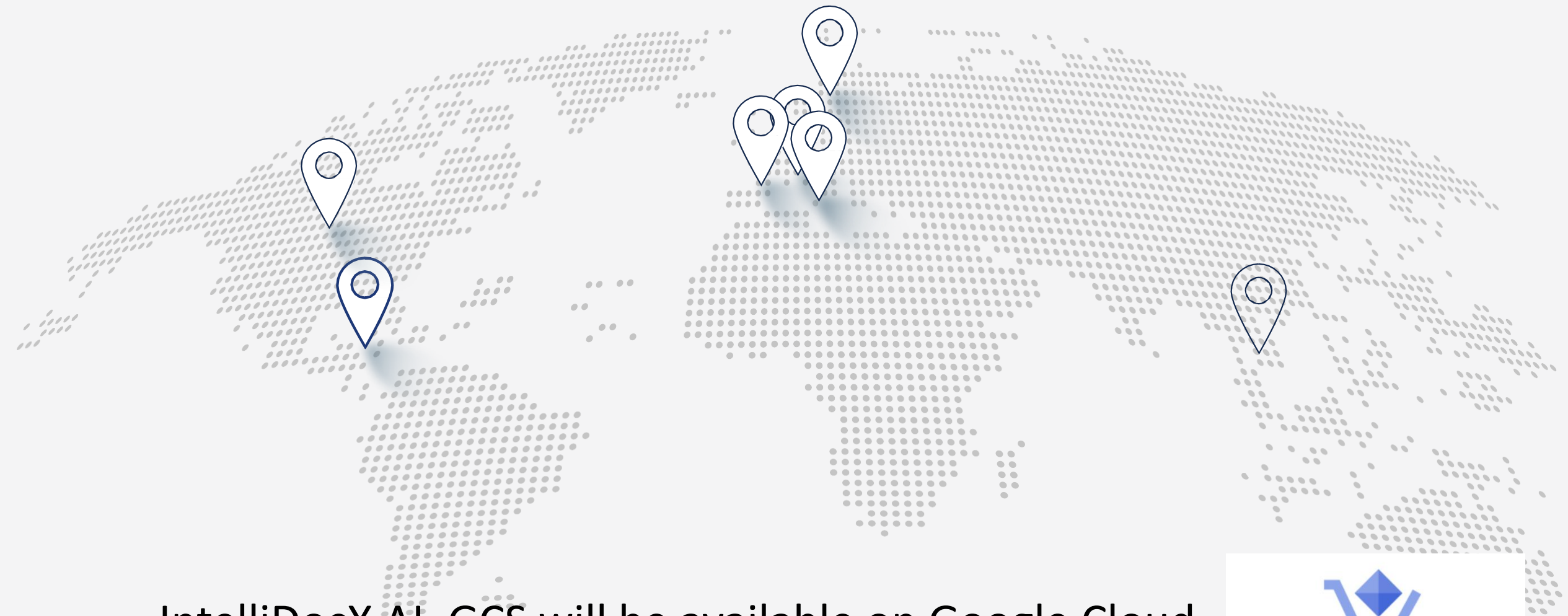
Head office in Miami, Florida with offices in France, Italy, Sweden, Belgium, Ottawa & Asia Pacific



Provides global, "follow-the-sun" product support 6 days/week

Intelligent Cloud Content Services for SAP

IntelliDocX integrates SAP in real-time with the Google Content Services Platform



IntelliDocX AL-GCS will be available on Google Cloud Marketplace soon.



Google Cloud Marketplace



Available on
SAP Store



SAP® Certified
Integration with SAP S/4HANA®



IntelliDocX

Certified Compatible with SAP S4/HANA, Private Edition (RISE)



SAP[®] Certified
Integration with SAP S/4HANA[®]

IntelliDocX Enabling SAP Content Services on Google

Key Customer Considerations SAP Modernization



What is the best cloud platform for my needs?



What is my content management strategy?



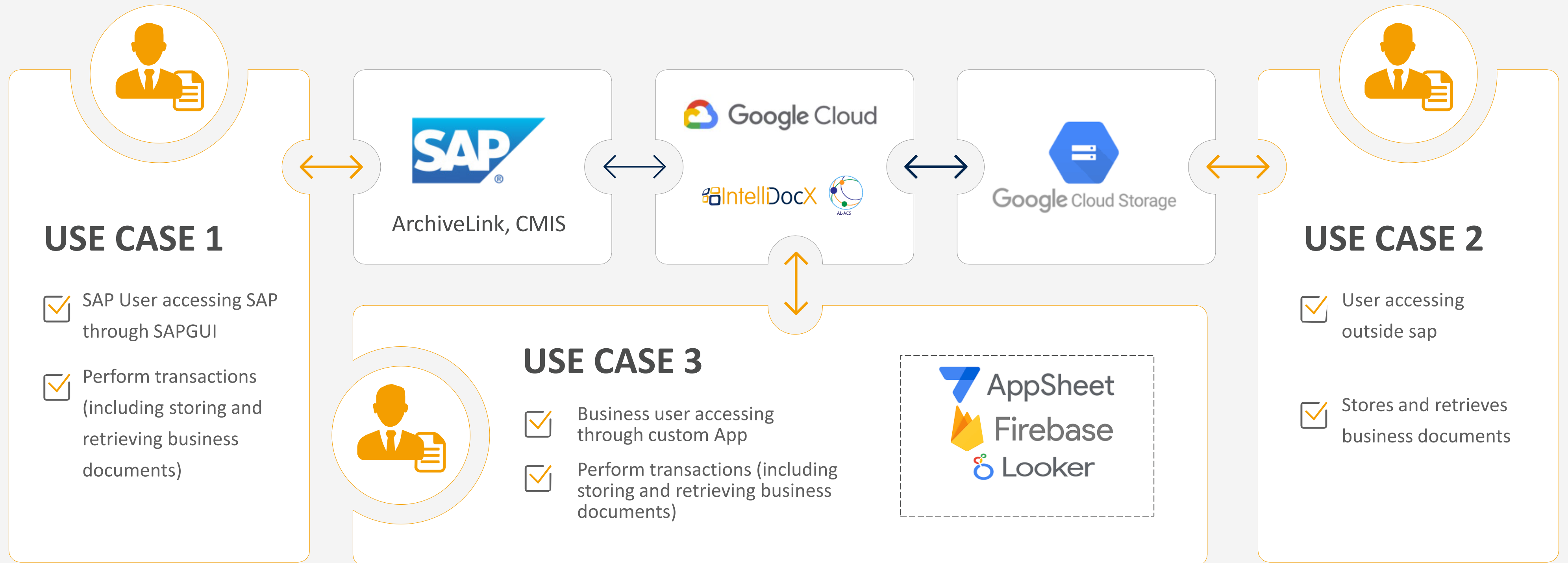
How best to modernize my business processes?



What to do with archived data & legacy systems?



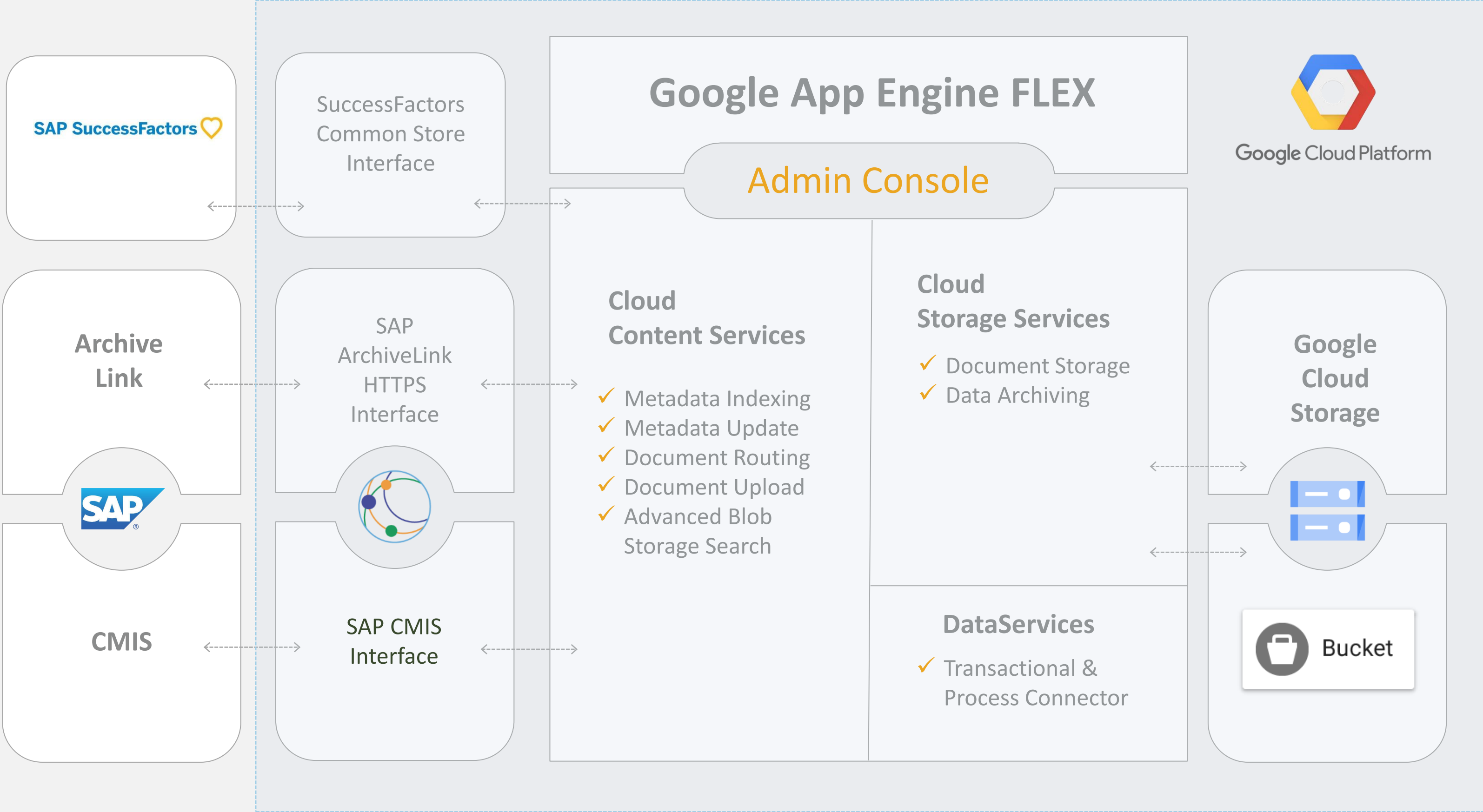
IntelliDocX Cloud **Interoperability** Solution: User View



“All read, updates, and deletion of documents via Indirect/Digital Access do not incur an additional charge.”

IntelliDocX Service Architecture

No VMs or Gateways.
Real-time/bi-directional integration.



IntelliDocX AL-GCS Flexible Packages & Options

1 AL-GCS Base

Storage of SAP documents on Google Storage via ArchiveLink/CMIS

2 AL-GCS Enterprise

Storage of SAP documents on Google Cloud via ArchiveLink/CMIS Document indexing and automatic update with SAP Metadata

3 Data Service Hub

Web Services for application interoperability with SAP (RFC, ABAP/BAPI, Query, Workflow)

4 AL-GCS Blob Storage Search

Google Content Services Cloud Storage Search application

5 AL-GCS IDOCS Server

Transfer of business SAP data to SharePoint in XML Format

6 Content Services APP for Fiori

The Content Services App addresses the lack of ArchiveLink based document services support (upload) as a Fiori app or as an in-line extension to existing Fiori Apps

7 DocLink option

Automatic upload of documents from O365 libraries to SAP Business Objects

8

Example **Content Enabled** Business Cases

SAP

Key Considerations

- ✓ SAP Infrastructure Modernization
- ✓ S/4 HANA Cost Management
- ✓ Content Enabled Processes
- ✓ Legacy ECM Decommissioning



Financial Accounting

Invoice Automation
 Invoice Approval
 PO/Non-PO Invoices
 Billing Documents



Purchasing

Purchase Requisition
 Approval
 Purchase Order
 Documentation



Delivery Management

Goods Receiving
 Goods Delivery
 Bill of Lading



Master Data

Material Documentation
 Customer Contracts
 Vendor Agreements



Sales

Sales Contracts
 Customer purchase orders
 Quotations and Inquiries



Human Resources

Travel Expense processing
 Employee on-boarding
 Personal Folder



Projects

Cost-Control
 documentation
 WBS Elements



Plant Maintenance

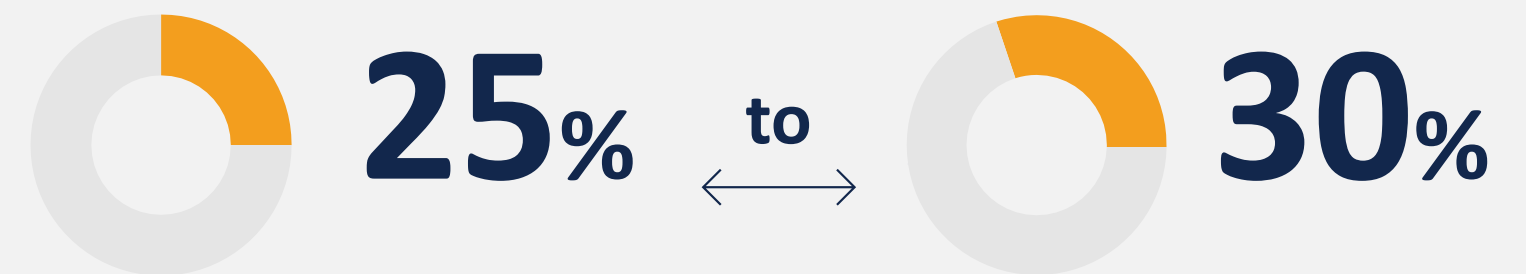
Work Order processing
 Preventive Plant
 Maintenance

Implementing SAP HANA Storage Costs

1 By 2027 all SAP customers need to move to S/4 HANA

- ✓ Only SAP HANA in-memory data store is supported
- ✓ EOL support for 3rd party db's (Oracle, SQL Server, DB2)
- ✓ Very efficient for transactions but expensive (yearly subscription) for unstructured content

3 Moving documents from DB to Cloud can save utilization fees of



2 Documents takes DB space of



EXAMPLE: on typical LARGE HANA installation, moving documents to Cloud can save up to

1 TB
Storage

24
VCPU

400 GB
Memory

Total saving exceeding

\$180k Year

Analysts suggest that technically 2023 represents the last available year to start an SAP HANA database migration project

Content Services App for Fiori

The Content Services App addresses the lack of ArchiveLink based document services support (upload) as a Fiori app or as an in-line extension to existing Fiori Apps. The CA app also serves as the foundation for the expanded functionality found in IDX Document Center Apps.

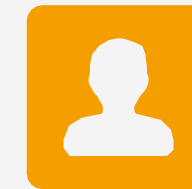
Icon	Location	Date	Description	File Name	Content Type
	Attachment	17/03/2022	GOS 1 4500000002	GOS 1 4500000002.pdf	application/pdf
	Attachment	17/03/2022	GOS 2 4500000002	GOS 2 4500000002.pdf	application/pdf
	ZIDPDF	17/03/2022	SAP Archivelink 1 4500000002.PDF	SAP Archivelink 1 4500000002.PDF	application/pdf
	ZIDPDF	17/03/2022	SAP Archivelink 2 4500000002.PDF	SAP Archivelink 2 4500000002.PDF	application/pdf



IDX Content Services for Fiori can be configured for any given SAP Business object and the document types configured in the SAP OADD tables for that Business Object.



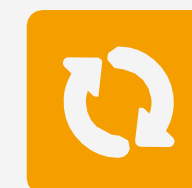
It will be activated from a Fiori App tile or can be modified to be an extension service within to existing Fiori apps, or launchable from a ribbon button.



The user would specify the “Document ID/business object ID) such as a PO number that the User is working with.



The user is then presented with a Content View list of all Attachments (from the SOFCONT1 Table) and ArchiveLink stored documents in the configured ContRepID, that have been associated to that given business record.



The user can re-order the content List view as desired.



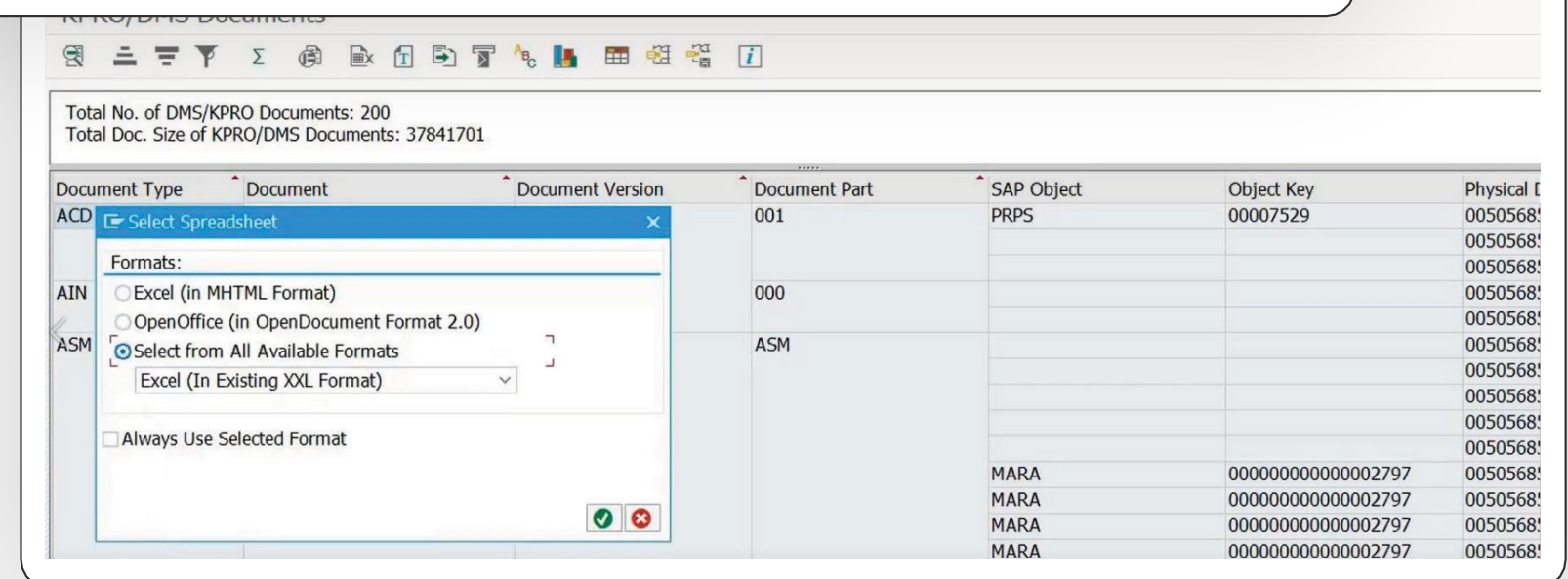
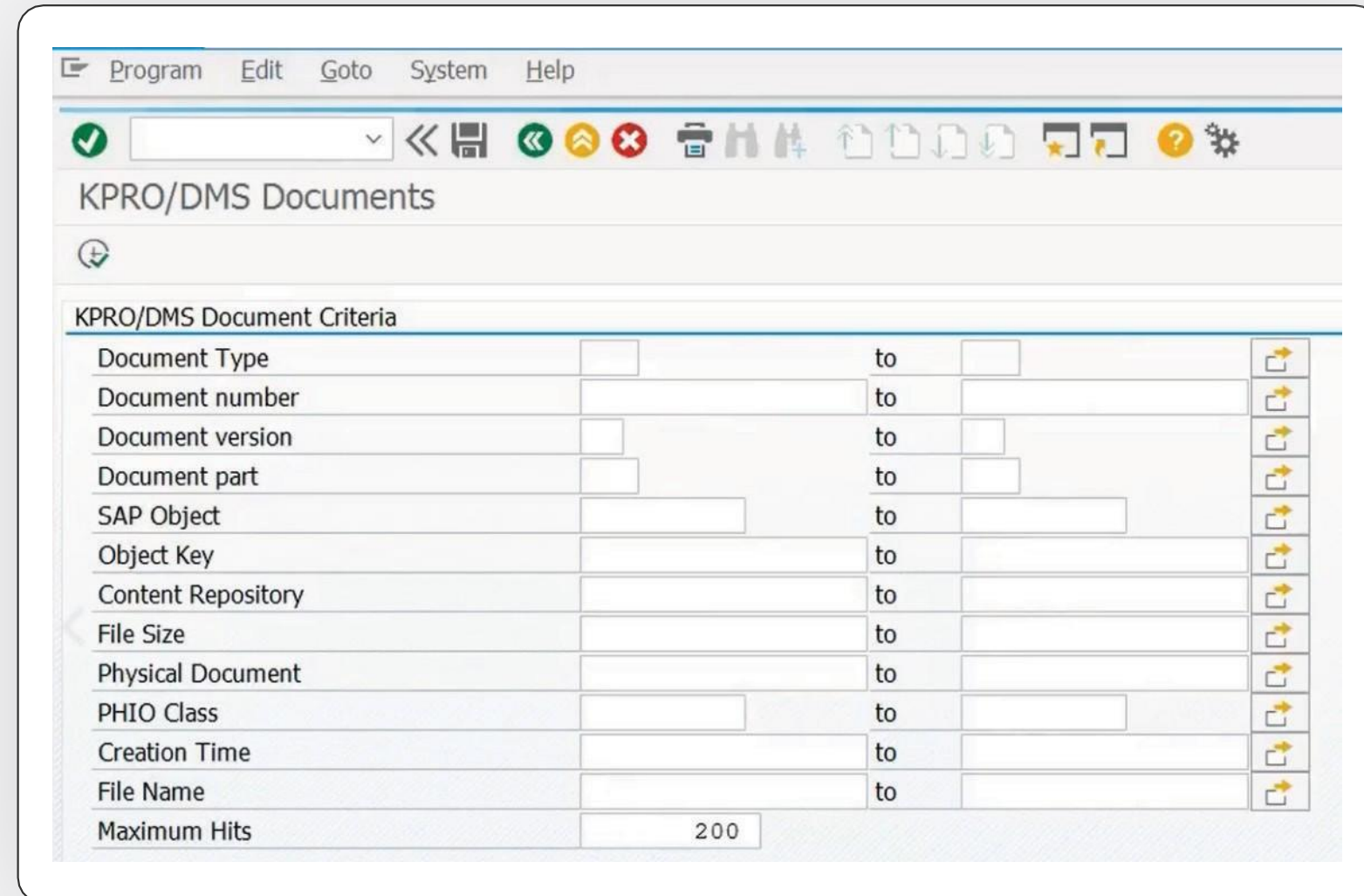
The user can elect to upload documents to the configured ArchiveLink Content Repository. Other users in any app (Fiori or in-side SAP S4/Hana or ECC will be able to see and access the same docs stored in the Google ArchiveLink interfaced Repositories as Configured via T-Code OAAD.t



SAP Document Analysis tools

- ✓ Only one SAP Transport
- ✓ Easy to use
- ✓ Output: Excel format, CSV

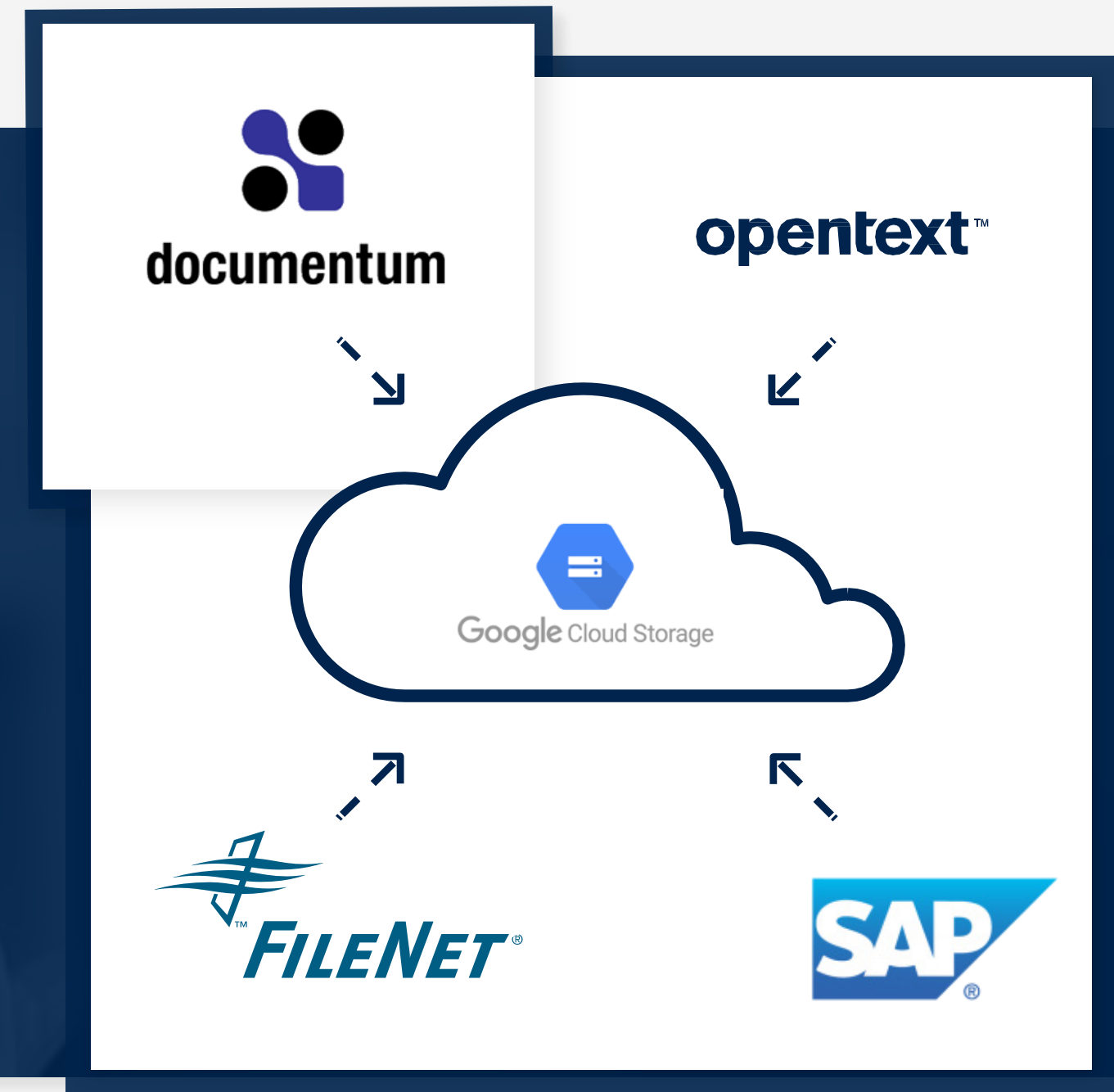
ArchiveLink, GOS Attachments, KPRO/DMS



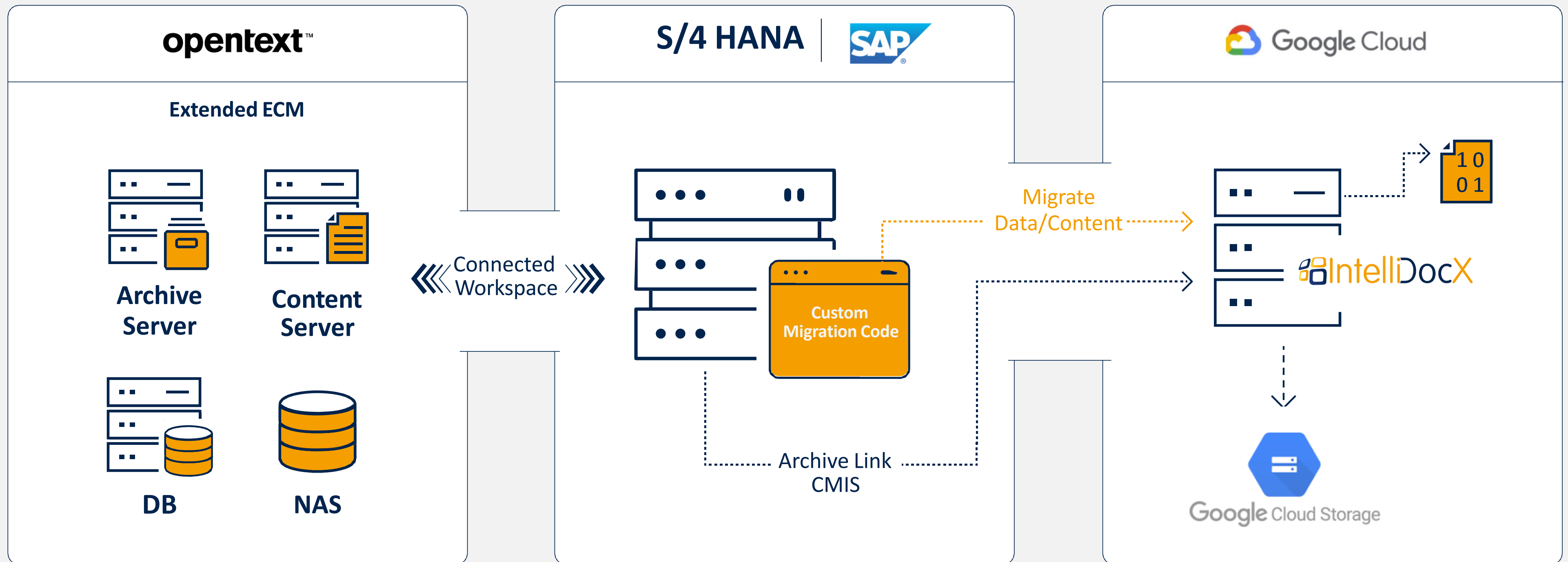
Migrating Content from Legacy SAP ECM systems to Google Cloud Storage

IntelliDocX Tools and Services to Automate and Accelerate the move to to Google Cloud Storage

- ✓ Migration of existing SAP Contents to any new ArchiveLink Repository.
- ✓ Migration Planning and BluePrint Workshop
- ✓ Analytic Scoping Tool
- ✓ Realization Services
- ✓ Implementing Google Cloud Storage as the new SAP ECM system
- ✓ Migration Execution Tool
- ✓ Methodology & Best Practices



Typical Migration Process (Data & Documents)



SAP Data Archiving on Google Cloud Storage

SAP ECC



Seamless Access



Storage System



Google Cloud Storage

Key advantage

Business users will have seamless access to all necessary data.



Archive (Data is written to files)

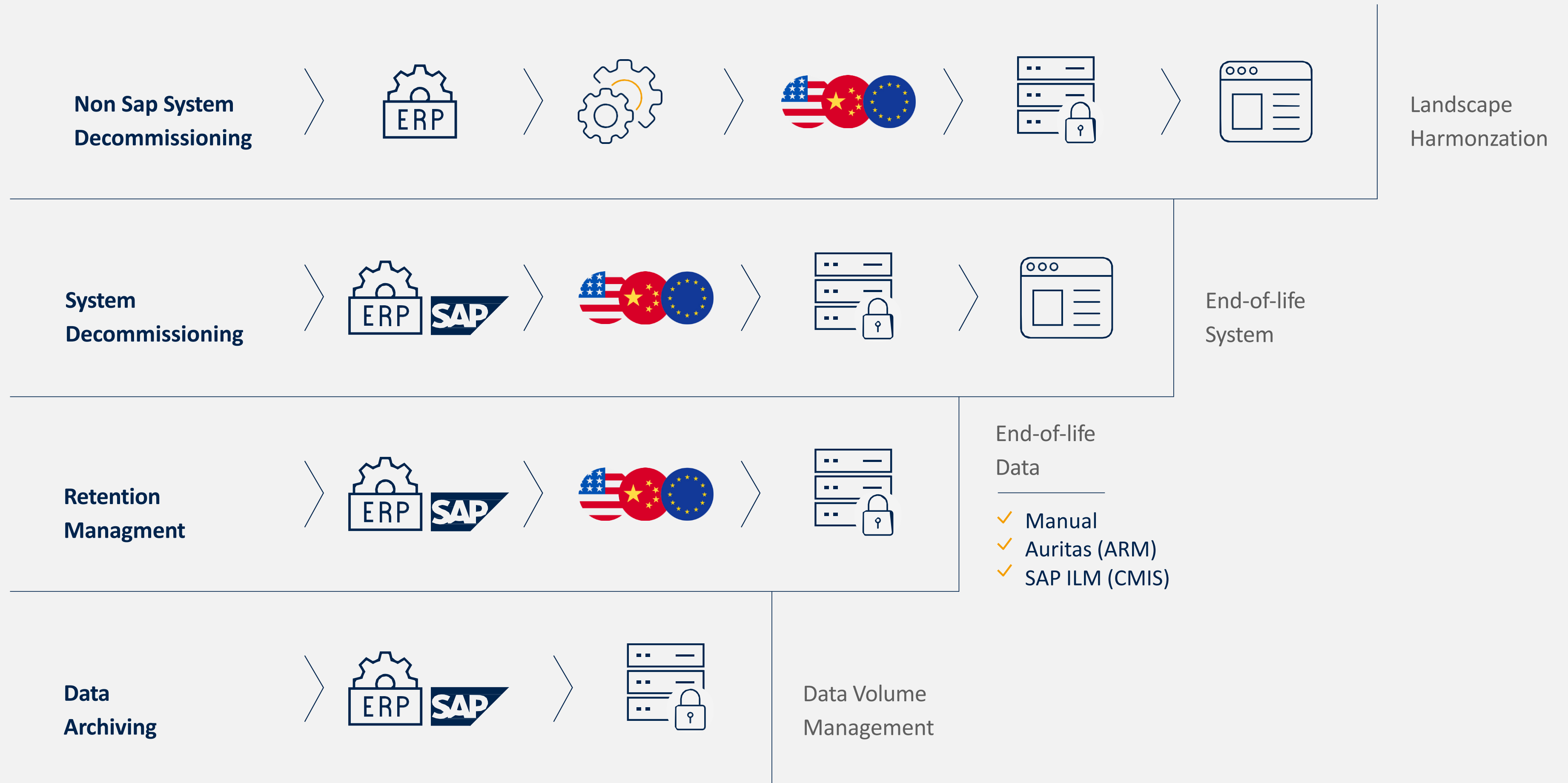


Delete (Data is deleted from tables)



Seamless Access

Retention Management **SAP ILM**



APay: Accounts Payable – End to End Processing

Capture/
Ingestion

Invoice
Centers

WorkFlows

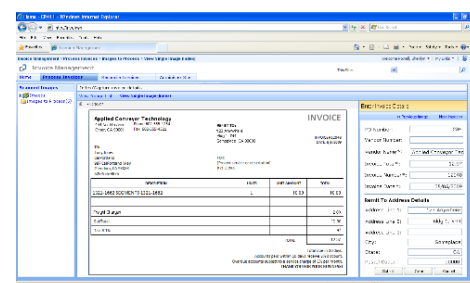
Posting

Analysis &
Reporting

Content & Data
Lifecycle Mgmt.

Capture information from invoices, apply Metadata tags, advanced batch handling, data validation, image creation, associate documents to invoice records

Store in Google Cloud Storage

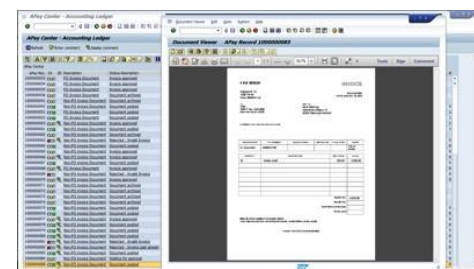


Encora

IntelliDocX
EMEA

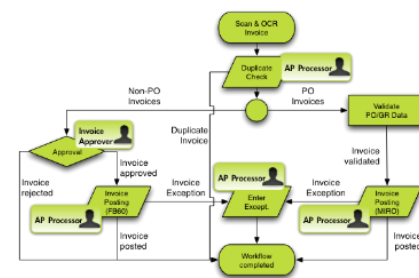
Access/direct all data & information, automatically post or park, data checks, validation and error reports, data access

P.O. data
Vendor data
View original
Activity history
Status
Auto updating

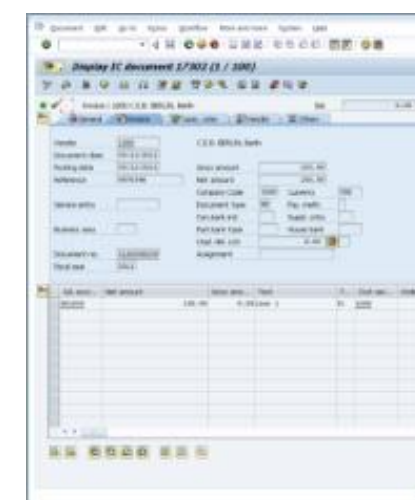


Complete workflow with entire process automation and optimization for invoice resolutions, notifications, approval routings, business-rules enforcement

Users can be in-side SAP workflows plus in SharePoint



Posting to SAP, financial and cost center allocations, payment generation, Prompt Payment Discounting



Operational Business Reports Report generation, process analysis, evaluation, & improvement

PO Number	PO Date	PO Amount	PO Status	PO Vendor
10000001	2012-01-01	1000000	Open	ABC Vendor
10000002	2012-01-02	2000000	Open	DEF Vendor
10000003	2012-01-03	3000000	Open	GHI Vendor
10000004	2012-01-04	4000000	Open	JKL Vendor
10000005	2012-01-05	5000000	Open	MNO Vendor

Legally Compliant Record Archival, Consistent Content Governance, Automated Holds and Dispositions

APay: Accounts Payable End to End Processing



Visibility leads to on-going process improvement

- ✓ Where are the bottle necks?
- ✓ How much time does each process take?



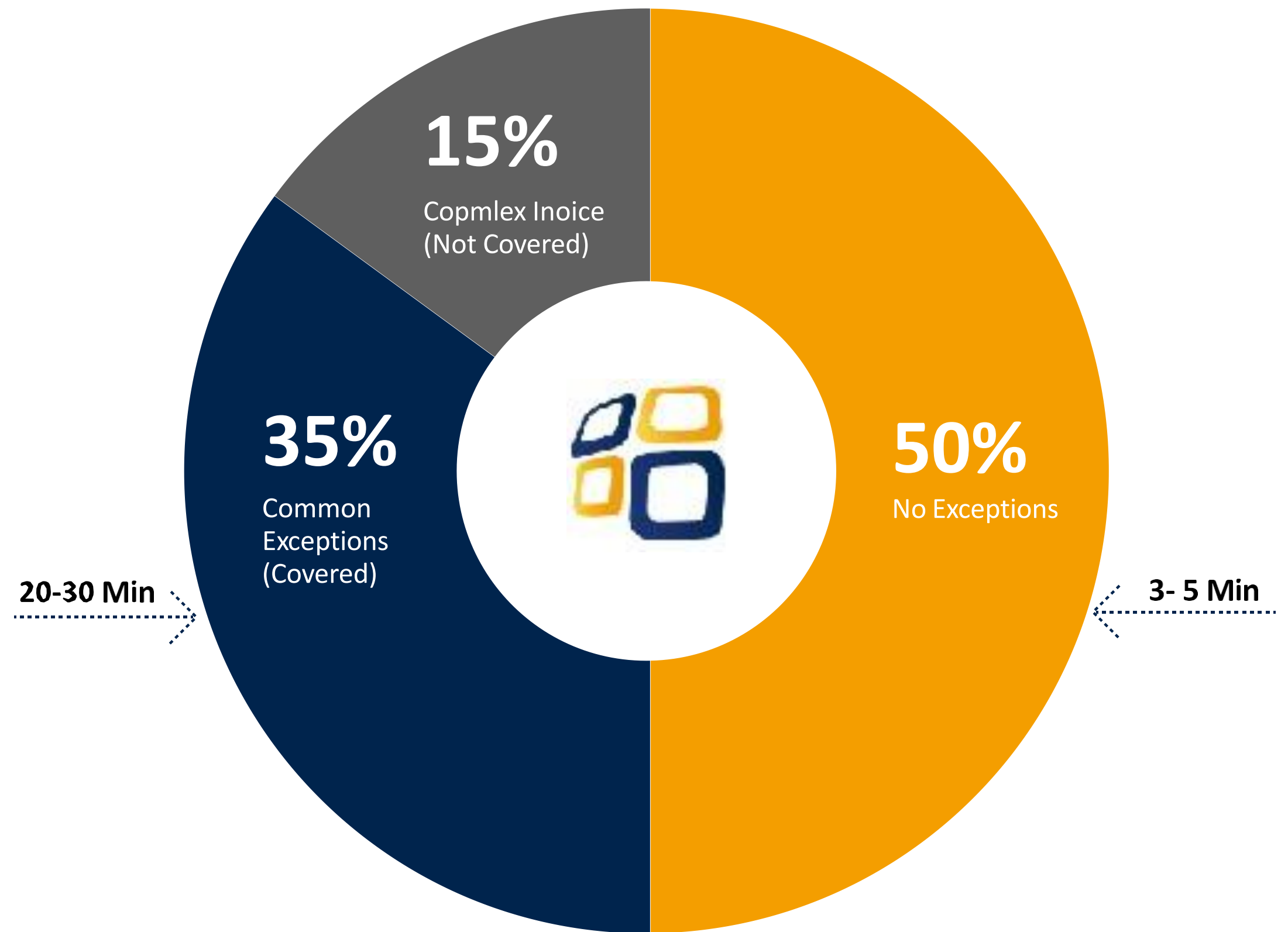
Customer Example (90,000 invoices)

- ✓ Most common invoice exceptions
- ✓ PO Number mismatch
- ✓ GR (delivery note) mismatch
- ✓ Amount discrepancy

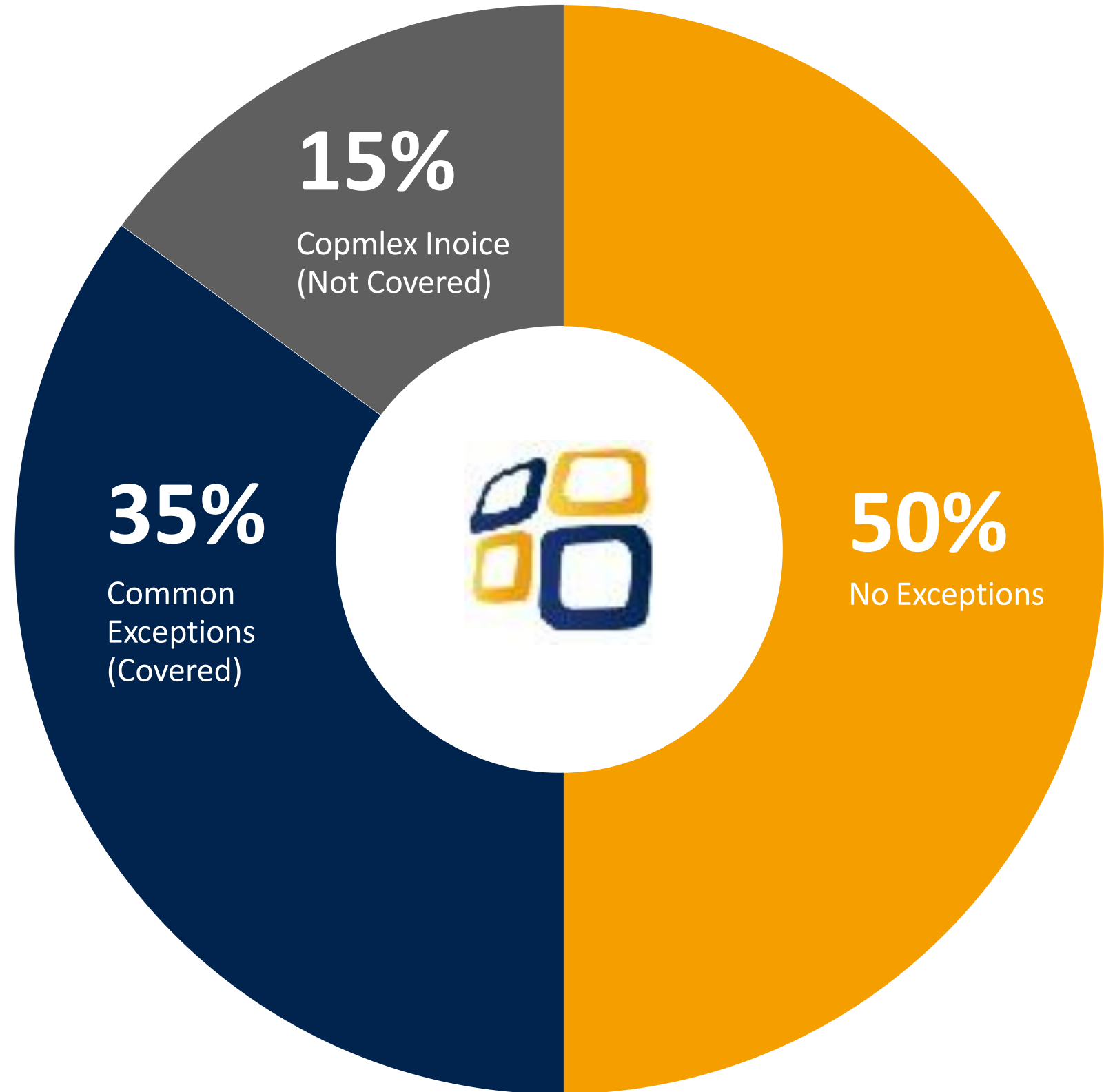


Complex invoice exceptions (examples)

- ✓ Account determination in financial posting
- ✓ Multiple POs/Deliveries per invoice



Note: Time frames represent proces times not elapsed times. Elapsed time can be greater depending on the complexity of the exception



Note: Potential time savings calculated based on 90,000 invoices

Invoice Processing Estimated Time Save (minutes/invoice)

Invoice processing duration will decrease over time, along the learning curve

- ✓ OCR – self learning mechanism
- ✓ P2P Process optimization

No Exception	From 3-5m	↔	To 0-1m	180,000 m potentially saved
Covered Exception	From 20-30m	↔	To 5m	787,500 m potentially saved
Not-Covered Exception	From 20-30m	↔	To Less	TBD

Other APay Benefits



AP Process optimization and standardization

- ✓ Elimination of paper documentation
- ✓ Reduce paper and backlog handling
- ✓ Reduce transaction time and costs
- ✓ Improve straight through processing of PO based invoices
- ✓ Invoice posting error rate reduction



Improved customer service levels

- ✓ Visibility, monitoring and control
- ✓ Enable AP staff to focus on higher value exceptions
- ✓ Extend early payment discounts to preferred suppliers, thereby realizing higher value returns on capital
- ✓ Gain better visibility in your working capital and cash flow



Mitigate compliance risks

- ✓ Improved investigation capability, auditability, traceability, etc.
- ✓ Sustainability contribution

IntelliDocX Success Stories

SIEMENS Gamesa
RENEWABLE ENERGY

NTT DATA

 **Kiewit**

 **IOM**
UN MIGRATION


affidea

 **EQUINOX**
GOLD

Alitalia



newgold


Stockland

WILEY

3M

SHISEIDO

Mondelēz
International

 **csem**

cts
Your Partner in
Smart Solutions

 **DKSH**

bühler

excelerate
energy

VITORIA
GASTEIZ
green capital

Aptargroup 

KETER


CALIAN


TRINSEO

ITA
AIRWAYS

Q & A

Thank You!

Contact: info@intellidocxemea.com



IntelliDocX

www.intellidocx.com



IntelliDocX
CANADA

www.intellidocxcanada.com



IntelliDocX
EMEA

www.intellidocxemea.com



IntelliDocX
ASIA

www.intellidocx.asia



SAP and other SAP product names mentioned herein as well as their respective logos are trademarks or registered trademarks of SAP SE (or an SAP affiliate company) in Germany and other countries. Google, Google Cloud, Office 365, O365, SharePoint PowerBI, PowerApp, PowerAutomate, Teams products and their respective logos are trademarks or registered trademarks of Microsoft Corporation in the United States and/or other countries. All other trademarks are property of their respective owners.