

# CENTRAL ROCKIES COLORADO PLATEAUS Ecoregion



## G1 and G2 Species Habitat Management Guidelines

### INTRODUCTION

The Sustainable Forestry Initiative® (SFI) [2022 Standards](#) include requirements that promote and conserve Forests with Exceptional Conservation Value (FECV), which includes critically imperiled (G1) and imperiled (G2) species. This fact sheet summarizes the analysis of FECV habitat within this ecoregion and provides habitat management recommendations that would benefit species potentially found here.

### HABITAT TYPES

- Mixed Conifer Forest
- Riparian/Streams
- Shrubland
- Special Sites

### MIXED CONIFER FOREST MANAGEMENT

- Protect known locations
- Retain legacy trees, stumps, and logs
- Retain large diameter trees with cavities or broken tops
- Leave skips and gaps with dense shrub component
- Retain large slash into piles

### RIPARIAN or STREAM MANAGEMENT

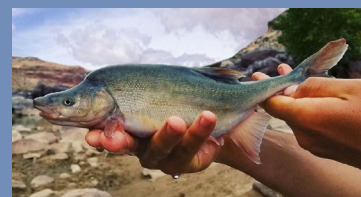
- Protect known locations
- Maintain well vegetated riparian buffers
- Plant a diversity of both hardwood and conifer trees
- Retain large diameter trees near streams and rivers
- Buffer streams, wetlands, springs, and headwater areas

### SHRUBLAND MANAGEMENT

- Protect known locations
- Maintain and buffer shrubland habitats across the landscape

### SPECIAL SITES MANAGEMENT

- Protect known locations
- Buffer special sites



**Humpback Chub**



**Schmoll's Milkvetch**



**Tiger Beardtongue**

*All management recommendations assume that operators and land managers are following all applicable BMPs, laws, and regulations.*

# CENTRAL ROCKIES COLORADO PLATEAUS Ecoregion



## G1 and G2 Species Habitat Management Guidelines

SCIENTIFIC NAME	COMMON NAME	HABITAT	STATUS
<i>Ipomopsis ramosa</i>	Coral Ipomopsis	Mixed Conifer Forest	G1
<i>Astragalus schmolliae</i>	<a href="#">Schmoll's Milkvetch</a>	Mixed Conifer Forest	G1
<i>Erigeron abajoensis</i>	<a href="#">Abajo Daisy</a>	Mixed Conifer Forest	G1G2
<i>Hackelia gracilentia</i>	<a href="#">Colorado Stickseed</a>	Mixed Conifer Forest	G1G2
<i>Astragalus debequaeus</i>	<a href="#">DeBeque Milkvetch</a>	Mixed Conifer Forest	G2
<i>Lesquerella pruinosa</i>	<a href="#">Frosty Bladderpod</a>	Mixed Conifer Forest	G2
<i>Lepidium huberi</i>	<a href="#">Huber's Pepperwort</a>	Mixed Conifer Forest	G2
<i>Lesquerella vicina</i>	<a href="#">Montrose Bladderpod</a>	Mixed Conifer Forest	G2
<i>Lupinus crassus</i>	<a href="#">Payson's Lupine</a>	Mixed Conifer Forest	G2
<i>Lesquerella parviflora</i>	<a href="#">Piceance Bladderpod</a>	Mixed Conifer Forest	G2
<i>Penstemon mensarum</i>	<a href="#">Tiger Beardtongue</a>	Mixed Conifer Forest	G2
<i>Lepidium crenatum</i>	<a href="#">Alkaline Pepperwort</a>	Mixed Conifer Forest	G2G3
<i>Hackelia besseyi</i>	<a href="#">Bessey's Stickseed</a>	Mixed Conifer Forest	G2G3
<i>Sclerocactus glaucus</i>	<a href="#">Colorado Hookless Cactus</a>	Mixed Conifer Forest	G2G3
<i>Cryptantha osterhoutii</i>	<a href="#">Osterhout's Cat's-eye</a>	Mixed Conifer Forest	G2G3
<i>Delphinium robustum</i>	<a href="#">Wahatoya Creek Larkspur</a>	Mixed Conifer Forest	G2G3
<i>Ptychocheilus lucius</i>	<a href="#">Colorado Pikeminnow</a>	Riparian	G1
<i>Gila cypha</i>	<a href="#">Humpback Chub</a>	Riparian	G1
<i>Xyrauchen texanus</i>	<a href="#">Razorback Sucker</a>	Riparian	G1
<i>Spiranthes diluvialis</i>	<a href="#">Ute Ladies'-tresses</a>	Riparian	G2G3
<i>Lygodesmia doloresensis</i>	<a href="#">Dolores River Skeleton-plant</a>	Shrubland	G1G2
<i>Astragalus piscator</i>	<a href="#">Fisher Milkvetch</a>	Shrubland	G2G3
<i>Gutierrezia elegans</i>	<a href="#">Lone Mesa Snakeweed</a>	Special Site	G1
<i>Packera mancosana</i>	Mancos Shale Packera	Special Site	G1
<i>Physaria scrotiformis</i>	<a href="#">West Silver Bladderpod</a>	Special Site	G1
<i>Draba malpighiacea</i>	Whitlow-grass	Special Site	G1
<i>Lomatium latilobum</i>	<a href="#">Canyonlands Lomatium</a>	Special Site	G1G2
<i>Astragalus deterior</i>	<a href="#">Cliff-palace Milkvetch</a>	Special Site	G1G2
<i>Townsendia glabella</i>	<a href="#">Gray's Townsend-daisy</a>	Special Site	G2
<i>Thelypodopsis juniperorum</i>	<a href="#">Juniper Tumble-mustard</a>	Special Site	G2
<i>Mentzelia rhizomata</i>	<a href="#">Roan Cliffs Blazingstar</a>	Special Site	G2
<i>Lomatium concinnum</i>	<a href="#">Colorado Desert-parsley</a>	Special Site	G2G3
<i>Puccinellia parishii</i>	<a href="#">Parish's Alkali Grass</a>	Streams	G2G3

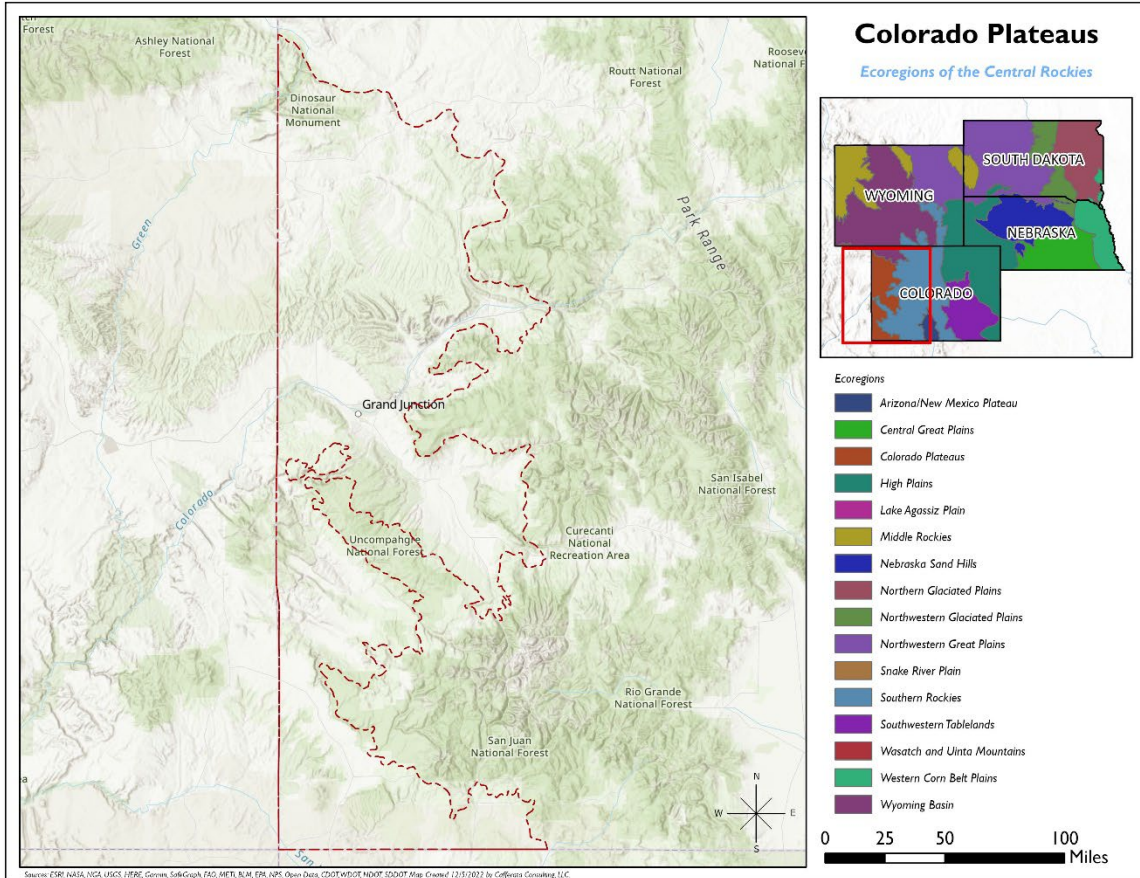
\*Species links provided when available

All management recommendations assume that operators and land managers are following all applicable BMPs, laws, and regulations.

# CENTRAL ROCKIES

## COLORADO PLATEAUS ECOREGION

### G1 and G2 Species Habitat Management Guidelines



All management recommendations assume that operators and land managers are following all applicable BMPs, laws, and regulations.

# CENTRAL ROCKIES HIGH PLAINS ECOREGION



## G1 and G2 Species Habitat Management Guidelines

### INTRODUCTION

The Sustainable Forestry Initiative® (SFI) [2022 Standards](#) include requirements that promote and conserve Forests with Exceptional Conservation Value (FECV), which includes critically imperiled (G1) and imperiled (G2) species. This fact sheet summarizes the analysis of FECV habitat within this ecoregion and provides habitat management recommendations that would benefit species potentially found here.

### HABITAT TYPES

- Mixed Conifer Forest
- Riparian
- Special Sites

### MIXED CONIFER FOREST MANAGEMENT

- Protect known locations
- Retain legacy trees, stumps, and logs
- Retain large diameter trees with cavities or broken tops
- Leave skips and gaps with dense shrub component
- Retain large slash into piles

### RIPARIAN MANAGEMENT

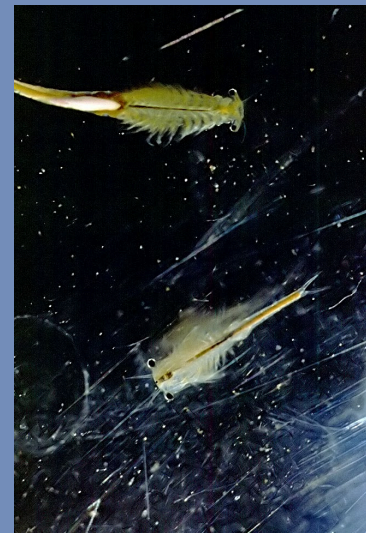
- Protect known locations
- Maintain well vegetated riparian buffers
- Plant a diversity of both hardwood and conifer trees
- Retain large diameter trees near streams and rivers
- Buffer streams, wetlands, springs, and headwater areas

### SPECIAL SITES MANAGEMENT

- Protect known locations
- Buffer special sites



**Laramie Columbine**



**Potassium Loving Fairy Shrimp**



**Northern Long-eared Bat**

*All management recommendations assume that operators and land managers are following all applicable BMPs, laws, and regulations.*

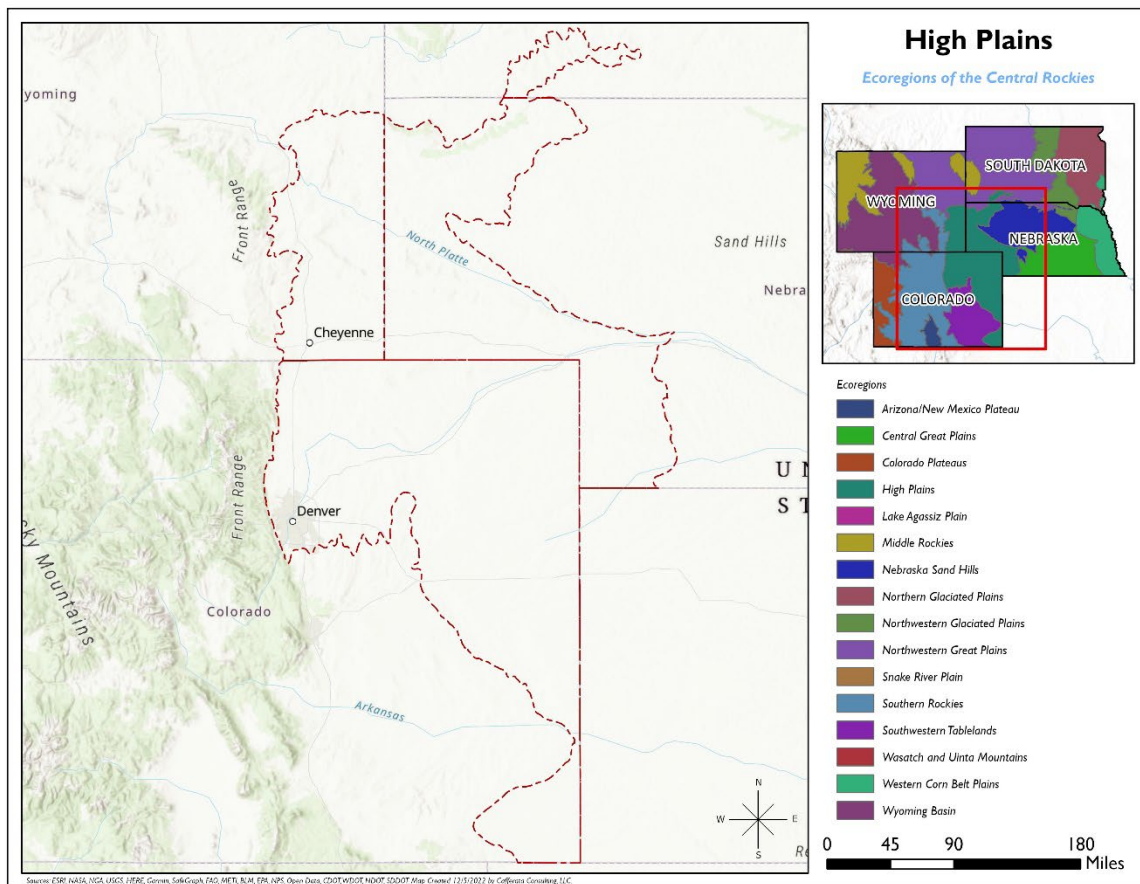
# CENTRAL ROCKIES HIGH PLAINS ECOREGION



## G1 and G2 Species Habitat Management Guidelines

SCIENTIFIC NAME	COMMON NAME	HABITAT	STATUS
<i>Aquilegia laramiensis</i>	<a href="#">Laramie Columbine</a>	Mixed Conifer Forest	G2G3
<i>Myotis septentrionalis</i>	<a href="#">Northern Long-eared Bat</a>	Mixed Conifer Forest	G2G3
<i>Branchinecta potassa</i>	<a href="#">Potassium Loving Fairy Shrimp</a>	Riparian	G2
<i>Spiranthes diluvialis</i>	<a href="#">Ute Ladies'-tresses</a>	Riparian	G2G3
<i>Catocala whitneyi</i>	<a href="#">Whitney's Underwing</a>	Special Site	G2G3

\*Species links provided when available



All management recommendations assume that operators and land managers are following all applicable BMPs, laws, and regulations.

# CENTRAL ROCKIES MIDDLE ROCKIES ECOREGION



## G1 and G2 Species Habitat Management Guidelines

### INTRODUCTION

The Sustainable Forestry Initiative® (SFI) [2022 Standards](#) include requirements that promote and conserve Forests with Exceptional Conservation Value (FECV), which includes critically imperiled (G1) and imperiled (G2) species. This fact sheet summarizes the analysis of FECV habitat within this ecoregion and provides habitat management recommendations that would benefit species potentially found here.

### HABITAT TYPES

- Mixed Conifer Forest
- Riparian
- Special Site

### MIXED CONIFER FOREST MANAGEMENT

- Protect known locations
- Retain legacy trees, stumps, and logs
- Retain large diameter trees with cavities or broken tops
- Leave skips and gaps with dense shrub component
- Retain large slash into piles
- Provide floral resources for the Arogos skipper (prefers purple cone flowers such as thistle, Polygala, Lacnanthes, or Liatris)

### RIPARIAN MANAGEMENT

- Protect known locations
- Maintain well vegetated riparian buffers
- Plant a diversity of both hardwood and conifer trees
- Retain large diameter trees near streams and rivers
- Buffer streams, wetlands, springs, and headwater areas

### SPECIAL SITE MANAGEMENT

- Protect known locations
- Buffer special sites
- Provide cover (woody debris, rocks, leaf litter, etc.) at sites where Pygmy Mountainsnail has been documented



**Northern Long-eared Bat**



**Whooping Crane**



**Pygmy Mountainsnail**

*All management recommendations assume that operators and land managers are following all applicable BMPs, laws, and regulations.*

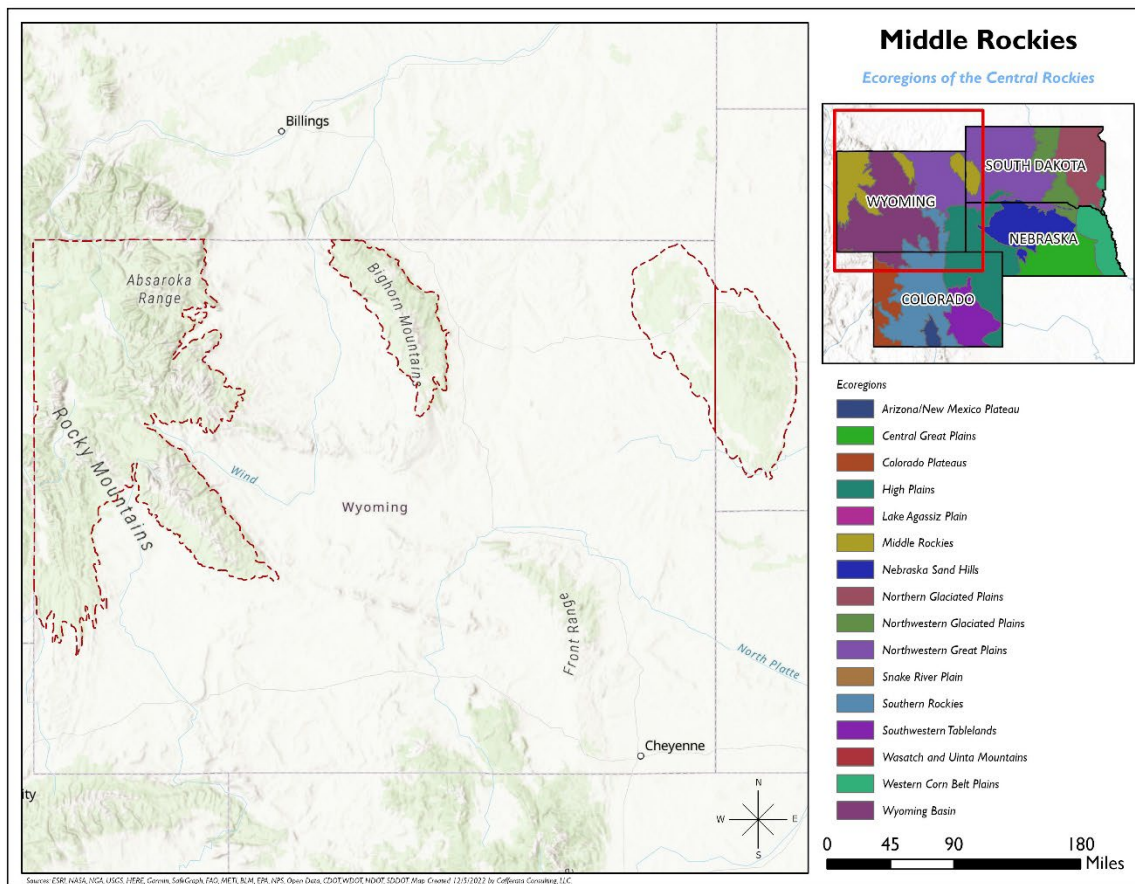
# CENTRAL ROCKIES MIDDLE ROCKIES ECOREGION



## G1 and G2 Species Habitat Management Guidelines

SCIENTIFIC NAME	COMMON NAME	HABITAT	STATUS
<i>Atrytone arogos</i>	<a href="#">Arogos Skipper</a>	Mixed Conifer Forest	G2G3
<i>Myotis septentrionalis</i>	<a href="#">Northern Long-eared Bat</a>	Mixed Conifer Forest	G2G3
<i>Grus americana</i>	<a href="#">Whooping Crane</a>	Riparian	G1
<i>Catinella wandae</i>	<a href="#">Slope Ambersnail</a>	Riparian	G2
<i>Oreohelix pygmaea</i>	<a href="#">Pygmy Mountainsnail</a>	Special Site	G2

\*Species links provided when available



All management recommendations assume that operators and land managers are following all applicable BMPs, laws, and regulations.

# CENTRAL ROCKIES

## NEBRASKA SAND HILLS ECOREGION

### G1 and G2 Species Habitat Management Guidelines



## INTRODUCTION

The Sustainable Forestry Initiative® (SFI) [2022 Standards](#) include requirements that promote and conserve Forests with Exceptional Conservation Value (FECV), which includes critically imperiled (G1) and imperiled (G2) species. This fact sheet summarizes the analysis of FECV habitat within this ecoregion and provides habitat management recommendations that would benefit species potentially found here.

## HABITAT TYPES

- Mixed Conifer Forest
- Riparian

## MIXED CONIFER FOREST MANAGEMENT

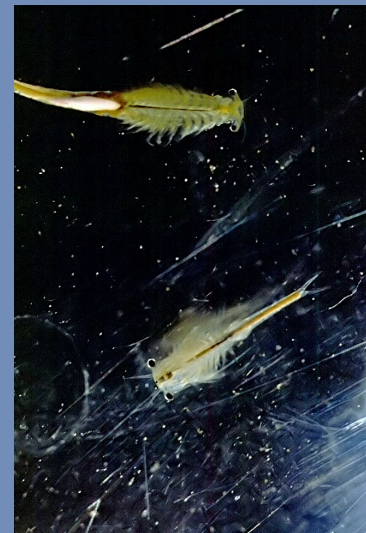
- Protect known locations
- Retain legacy trees, stumps, and logs
- Retain large diameter trees with cavities or broken tops
- Leave skips and gaps with dense shrub component
- Retain large slash into piles

## RIPARIAN MANAGEMENT

- Protect known locations
- Maintain well vegetated riparian buffers
- Plant a diversity of both hardwood and conifer trees
- Retain large diameter trees near streams and rivers
- Buffer streams, wetlands, springs, and headwater areas



**Northern Long-eared Bat**



**Potassium Loving Fairy Shrimp**



# CENTRAL ROCKIES

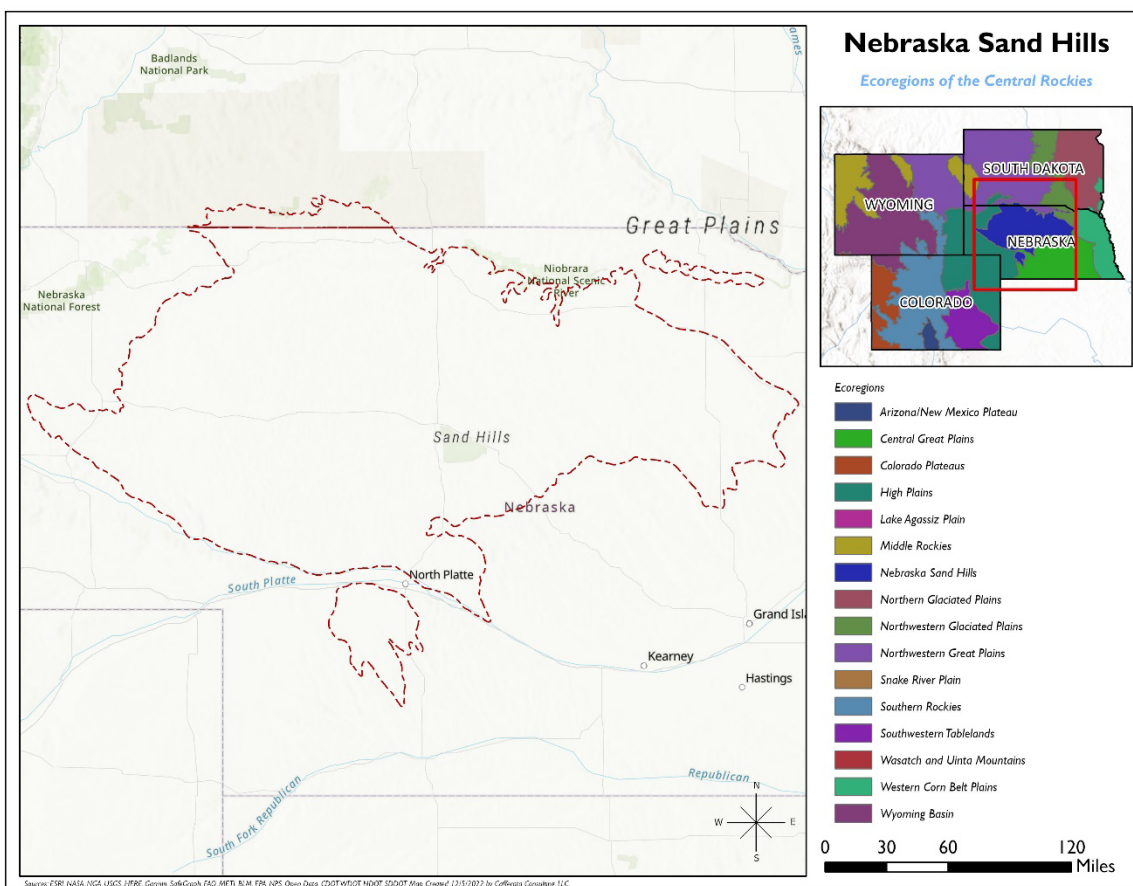
## NEBRASKA SAND HILLS ECOREGION

### G1 and G2 Species Habitat Management Guidelines



SCIENTIFIC NAME	COMMON NAME	HABITAT	STATUS
<i>Myotis septentrionalis</i>	<a href="#">Northern Long-eared Bat</a>	Mixed Conifer Forest	G2G3
<i>Branchinecta potassa</i>	<a href="#">Potassium Loving Fairy Shrimp</a>	Riparian	G2

\*Species links provided when available



All management recommendations assume that operators and land managers are following all applicable BMPs, laws, and regulations.

# CENTRAL ROCKIES NORTHWESTERN GREAT PLAINS ECOREGION

## G1 and G2 Species Habitat Management Guidelines



### INTRODUCTION

The Sustainable Forestry Initiative® (SFI) [2022 Standards](#) include requirements that promote and conserve Forests with Exceptional Conservation Value (FECV), which includes critically imperiled (G1) and imperiled (G2) species. This fact sheet summarizes the analysis of FECV habitat within this ecoregion and provides habitat management recommendations that would benefit species potentially found here.

### HABITAT TYPES

- Mixed Conifer Forest
- Riparian
- Special Sites

### MIXED CONIFER FOREST MANAGEMENT

- Protect known locations
- Retain legacy trees, stumps, and logs
- Retain large diameter trees with cavities or broken tops
- Leave skips and gaps with dense shrub component
- Retain large slash into piles
- Provide floral resources for the Arogos skipper (prefers purple cone flowers such as thistle, Polygala, Lacnanthes, or Liatris)

### RIPARIAN MANAGEMENT

- Protect known locations
- Maintain well vegetated riparian buffers
- Plant a diversity of both hardwood and conifer trees
- Retain large diameter trees near streams and rivers
- Buffer streams, wetlands, springs, and headwater areas

### SPECIAL SITES MANAGEMENT

- Protect known locations
- Buffer special sites
- Provide cover (woody debris, rocks, leaf litter, etc.) at sites where Pygmy Mountainsnail has been documented
- Protect oak woodlands where the food plant (Larva feeds entirely on *Amorpha*, possibly only on *Amorpha canescens*) is present for Whitney's Underwing



**Whooping Crane**



**Slope Ambersnail**



**Pygmy Mountainsnail**

All management recommendations assume that operators and land managers are following all applicable BMPs, laws, and regulations.

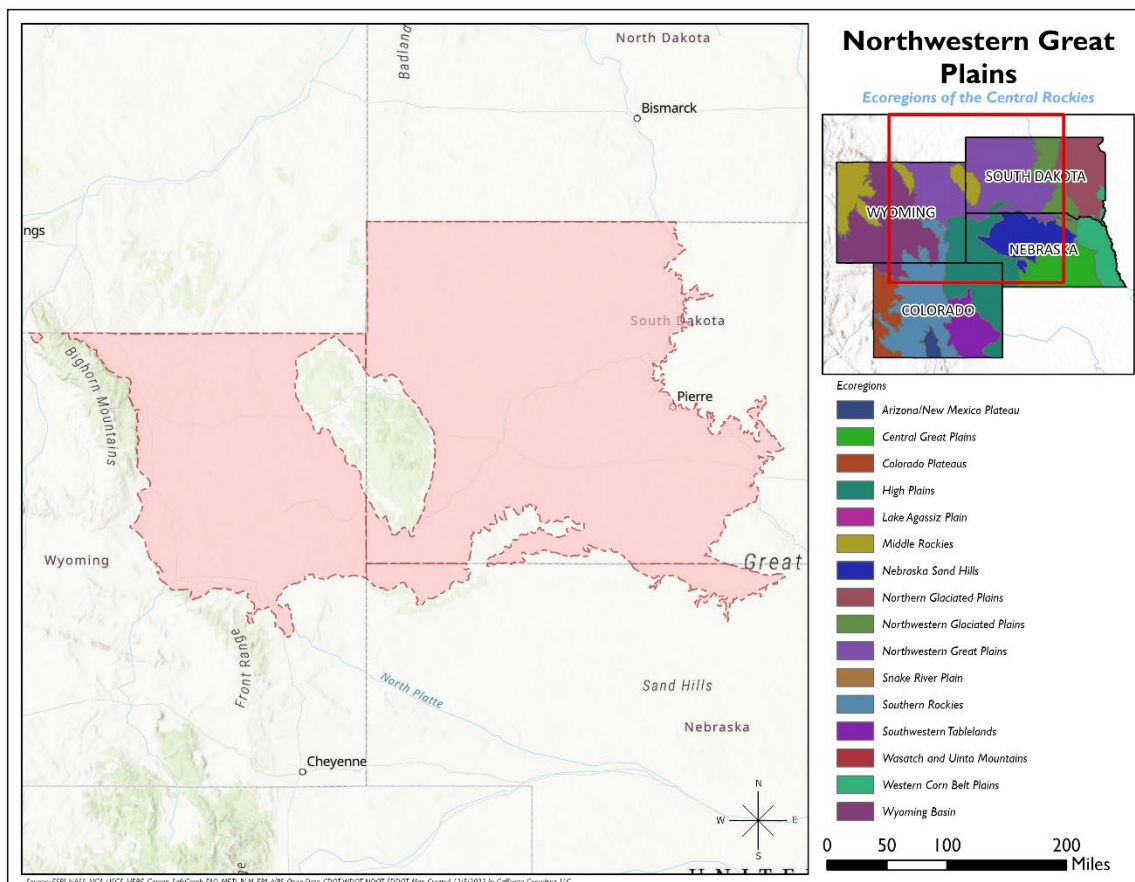
# CENTRAL ROCKIES NORTHWESTERN GREAT PLAINS ECOREGION

## G1 and G2 Species Habitat Management Guidelines



SCIENTIFIC NAME	COMMON NAME	HABITAT	STATUS
<i>Atrytone arogos</i>	<a href="#">Arogos Skipper</a>	Mixed Conifer Forest	G2G3
<i>Aquilegia laramiense</i>	<a href="#">Laramie Columbine</a>	Mixed Conifer Forest	G2G3
<i>Myotis septentrionalis</i>	<a href="#">Northern Long-eared Bat</a>	Mixed Conifer Forest	G2G3
<i>Grus americana</i>	<a href="#">Whooping Crane</a>	Riparian	G1
<i>Catinella wandae</i>	<a href="#">Slope Ambersnail</a>	Riparian	G2
<i>Spiranthes diluvialis</i>	<a href="#">Ute Ladies'-tresses</a>	Riparian	G2G3
<i>Oreohelix pygmaea</i>	<a href="#">Pygmy Mountainsnail</a>	Special Site	G2
<i>Catocala whitneyi</i>	<a href="#">Whitney's Underwing</a>	Special Site	G2G3

\*Species links provided when available



All management recommendations assume that operators and land managers are following all applicable BMPs, laws, and regulations.

# CENTRAL ROCKIES SOUTHERN ROCKIES ECOREGION



## G1 and G2 Species Habitat Management Guidelines

### INTRODUCTION

The Sustainable Forestry Initiative® (SFI) [2022 Standards](#) include requirements that promote and conserve Forests with Exceptional Conservation Value (FECV), which includes critically imperiled (G1) and imperiled (G2) species. This fact sheet summarizes the analysis of FECV habitat within this ecoregion and provides habitat management recommendations that would benefit species potentially found here.

### HABITAT TYPES

- Forest Edge
- Mixed Conifer Forest
- Riparian/Streams
- Shrubland
- Special Sites

### FOREST EDGE MANAGEMENT

- Protect known locations
- Provide floral resources such as aster, Chrysothamnus and Solidago

### MIXED CONIFER FOREST MANAGEMENT

- Protect known locations
- Retain legacy trees, stumps, and logs
- Retain large diameter trees with cavities or broken tops
- Leave skips and gaps with dense shrub component
- Retain large slash into piles

### RIPARIAN or STREAM MANAGEMENT

- Protect known locations
- Maintain well vegetated riparian buffers
- Plant a diversity of both hardwood and conifer trees
- Retain large diameter trees near streams and rivers
- Buffer streams, wetlands, springs, and headwater areas



**Colorado Pikeminnow**



**Schmoll's Milkvetch**



**Skiff Milkvetch**

*All management recommendations assume that operators and land managers are following all applicable BMPs, laws, and regulations.*

# CENTRAL ROCKIES SOUTHERN ROCKIES ECOREGION



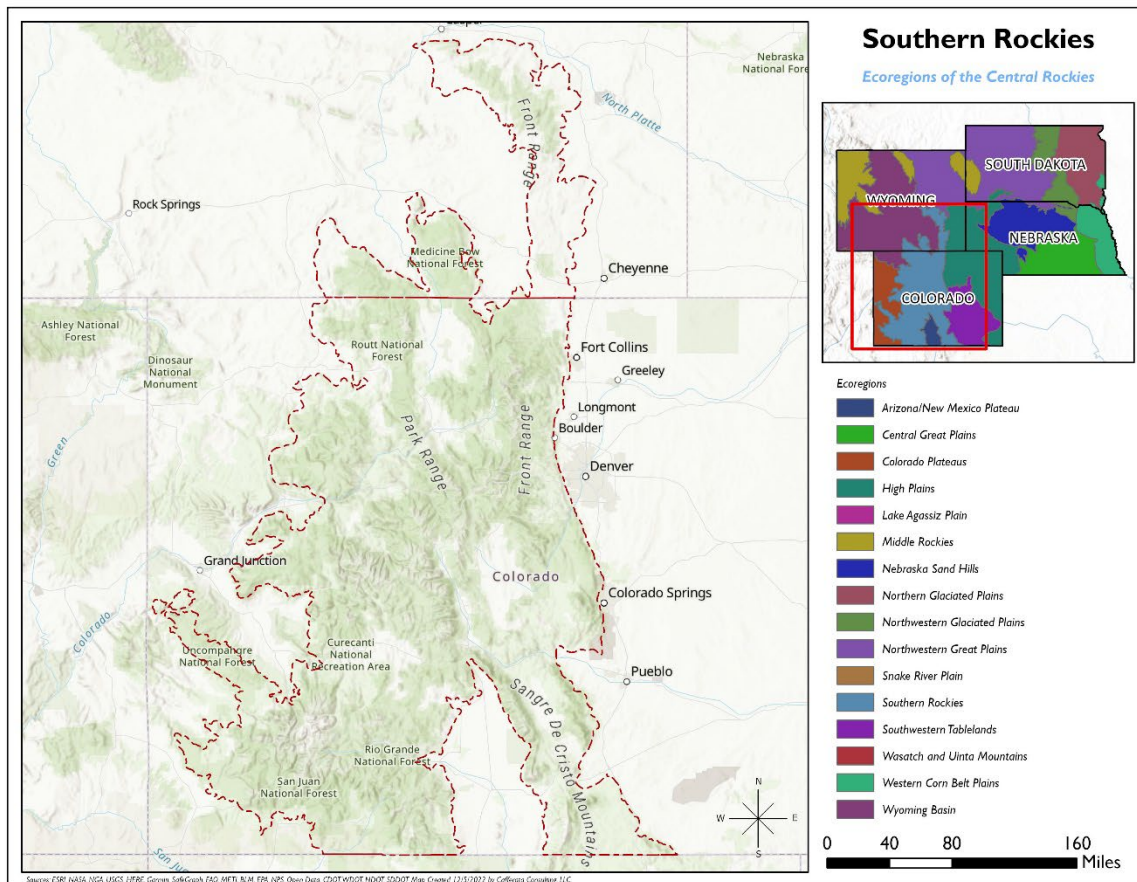
## G1 and G2 Species Habitat Management Guidelines

### SHRUBLAND MANAGEMENT

- Protect known locations
- Maintain and buffer shrubland habitats across the landscape

### SPECIAL SITES MANAGEMENT

- Protect known locations
- Buffer special sites



All management recommendations assume that operators and land managers are following all applicable BMPs, laws, and regulations.

# CENTRAL ROCKIES

## SOUTHERN ROCKIES ECOREGION



### G1 and G2 Species Habitat Management Guidelines

SCIENTIFIC NAME	COMMON NAME	HABITAT	STATUS
<i>Bombus suckleyi</i>	<a href="#">Suckley's Cuckoo Bumble Bee</a>	Forest Edge	G2G3
<i>Ipomopsis ramosa</i>	Coral Ipomopsis	Mixed Conifer Forest	G1
<i>Astragalus schmolliae</i>	<a href="#">Schmoll's Milkvetch</a>	Mixed Conifer Forest	G1
<i>Erigeron abajoensis</i>	<a href="#">Abajo Daisy</a>	Mixed Conifer Forest	G1G2
<i>Hackelia gracilentia</i>	<a href="#">Colorado Stickseed</a>	Mixed Conifer Forest	G1G2
<i>Astragalus debequaeus</i>	<a href="#">DeBeque Milkvetch</a>	Mixed Conifer Forest	G2
<i>Lesquerella pruinosa</i>	<a href="#">Frosty Bladderpod</a>	Mixed Conifer Forest	G2
<i>Lepidium huberi</i>	<a href="#">Huber's Pepperwort</a>	Mixed Conifer Forest	G2
<i>Lesquerella vicina</i>	<a href="#">Montrose Bladderpod</a>	Mixed Conifer Forest	G2
<i>Lupinus crassus</i>	<a href="#">Payson's Lupine</a>	Mixed Conifer Forest	G2
<i>Lesquerella parviflora</i>	<a href="#">Piceance Bladderpod</a>	Mixed Conifer Forest	G2
<i>Penstemon mensarum</i>	<a href="#">Tiger Beardtongue</a>	Mixed Conifer Forest	G2
<i>Lepidium crenatum</i>	<a href="#">Alkaline Pepperwort</a>	Mixed Conifer Forest	G2G3
<i>Hackelia besseyi</i>	<a href="#">Bessey's Stickseed</a>	Mixed Conifer Forest	G2G3
<i>Sclerocactus glaucus</i>	<a href="#">Colorado Hookless Cactus</a>	Mixed Conifer Forest	G2G3
<i>Aquilegia laramiensis</i>	<a href="#">Laramie Columbine</a>	Mixed Conifer Forest	G2G3
<i>Myotis septentrionalis</i>	<a href="#">Northern Long-eared Bat</a>	Mixed Conifer Forest	G2G3
<i>Cryptantha osterhoutii</i>	<a href="#">Osterhout's Cat's-eye</a>	Mixed Conifer Forest	G2G3
<i>Delphinium robustum</i>	<a href="#">Wahatoya Creek Larkspur</a>	Mixed Conifer Forest	G2G3
<i>Ptychocheilus lucius</i>	<a href="#">Colorado Pikeminnow</a>	Riparian	G1
<i>Gila cypha</i>	<a href="#">Humpback Chub</a>	Riparian	G1
<i>Xyrauchen texanus</i>	<a href="#">Razorback Sucker</a>	Riparian	G1
<i>Spiranthes diluvialis</i>	<a href="#">Ute Ladies'-tresses</a>	Riparian	G2G3
<i>Lygodesmia doloresensis</i>	<a href="#">Dolores River Skeleton-plant</a>	Shrubland	G1G2
<i>Astragalus piscator</i>	<a href="#">Fisher Milkvetch</a>	Shrubland	G2G3
<i>Gutierrezia elegans</i>	<a href="#">Lone Mesa Snakeweed</a>	Special Site	G1
<i>Packera mancosana</i>	Mancos Shale Packera	Special Site	G1
<i>Astragalus microcymbus</i>	<a href="#">Skiff Milkvetch</a>	Special Site	G1
<i>Physaria scrotiformis</i>	<a href="#">West Silver Bladderpod</a>	Special Site	G1
<i>Draba malpighiacea</i>	Whitlow-grass	Special Site	G1
<i>Lomatium latilobum</i>	<a href="#">Canyonlands Lomatium</a>	Special Site	G1G2
<i>Astragalus deterior</i>	<a href="#">Cliff-palace Milkvetch</a>	Special Site	G1G2
<i>Physaria alpina</i>	<a href="#">Avery Peak Twinpod</a>	Special Site	G2
<i>Townsendia glabella</i>	<a href="#">Gray's Townsend-daisy</a>	Special Site	G2
<i>Thelypodopsis juniperorum</i>	<a href="#">Juniper Tumble-mustard</a>	Special Site	G2
<i>Mentzelia rhizomata</i>	<a href="#">Roan Cliffs Blazingstar</a>	Special Site	G2
<i>Lomatium concinnum</i>	<a href="#">Colorado Desert-parsley</a>	Special Site	G2G3
<i>Puccinellia parishii</i>	<a href="#">Parish's Alkali Grass</a>	Streams	G2G3

\*Species links provided when available

All management recommendations assume that operators and land managers are following all applicable BMPs, laws, and regulations.

# CENTRAL ROCKIES WYOMING BASIN ECOREGION



## G1 and G2 Species Habitat Management Guidelines

### INTRODUCTION

The Sustainable Forestry Initiative® (SFI) [2022 Standards](#) include requirements that promote and conserve Forests with Exceptional Conservation Value (FECV), which includes critically imperiled (G1) and imperiled (G2) species. This fact sheet summarizes the analysis of FECV habitat within this ecoregion and provides habitat management recommendations that would benefit species potentially found here.

### HABITAT TYPES

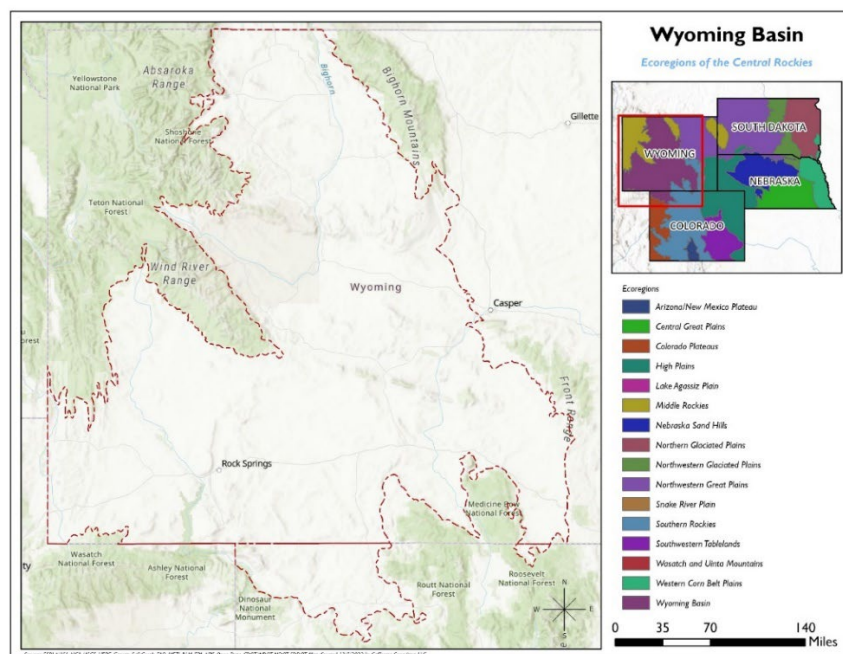
- Special Sites

### SPECIAL SITE MANAGEMENT

- Protect known locations
- Buffer special sites
- Provide cover (woody debris, rocks, leaf litter, etc.) at sites where Pygmy Mountainsnail has been documented



SCIENTIFIC NAME	COMMON NAME	HABITAT	STATUS
<i>Oreohelix pygmaea</i>	<a href="#">Pygmy Mountainsnail</a>	Special Site	G2



All management recommendations assume that operators and land managers are following all applicable BMPs, laws, and regulations.