

SERIES 40-5 WEDGE-LOK

DSCC 89064 & CID 59789

RECOMMENDED GAP WIDTH

PCB + 7.62 (.300)

RECOMMENDED TORQUE

80 N-cm (7 in-lbs)

WEIGHT

1.16 g/cm (.104 oz/in)

MATERIALS AND FINISH

WEDGES

Material: Aluminum Alloy 6061-T6 per QQ-A-200/8

Finish: See finish table on opposite page

SCREW

.09-in. or 2.5-mm hex. socket head cap screw, depending on mounting configuration

Material: 300 series stainless steel per QQ-S-763 ASTM A-582 A286 per FF-S-86 with dry film lube per MIL-L-46010 for "TLC" option

Finish: Passivated per AMS2700

ALIGNMENT SPRINGS

Material: 301 stainless steel half hard per AMS 5518

Finish: Passivated per AMS2700

OPTIONAL LOCK AND FLAT WASHER

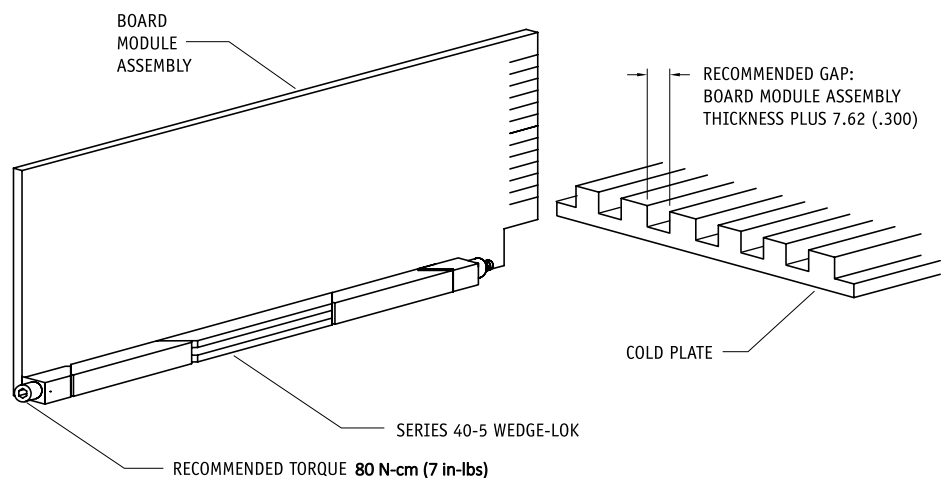
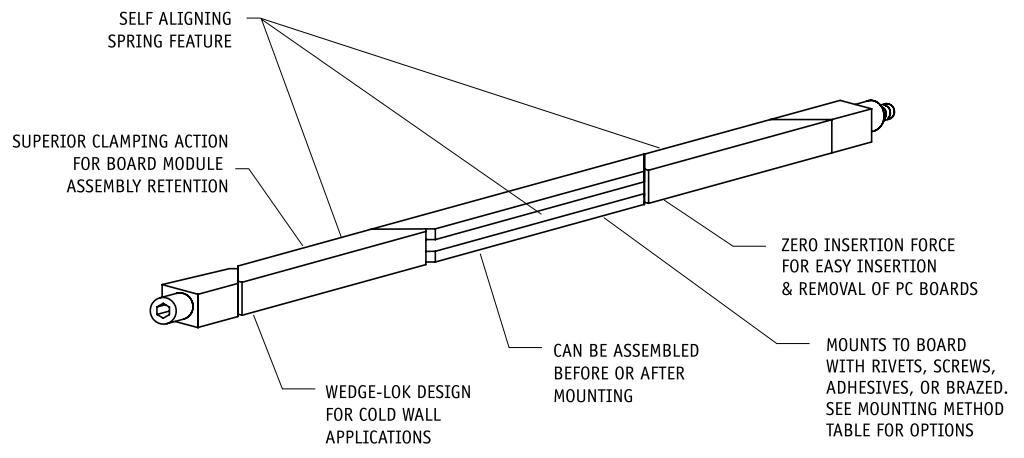
Material: 300 series stainless steel per QQ-S-763 and ASTM A-582

Finish: Passivated per AMS2700

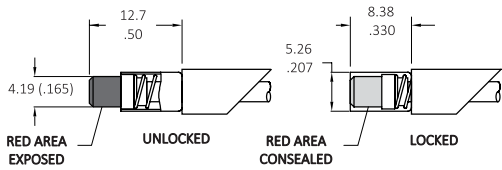
OPTIONAL LOCKNUT

Material: Type A286 stainless steel per ASTM AMS 5525

Finish: Silver plate per AMS 2410

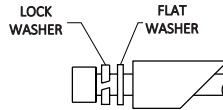


SERIES 40-5 WEDGE LOK



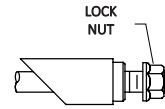
VI OPTION

Indicates assembly is unlocked (adds 5.1 (.20) to screw length)



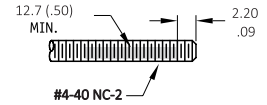
LF OPTION

Provides additional resistance to shock and vibration (adds 2.5 (.10) in screw length)



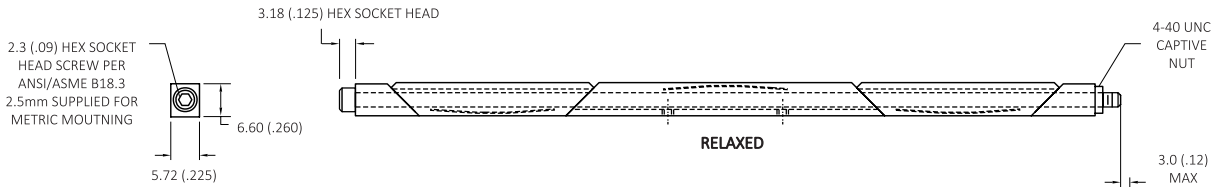
LN OPTION

Captivates rear wedge when untorqued (adds 2.5 (.10) to screw length)



LOPTION

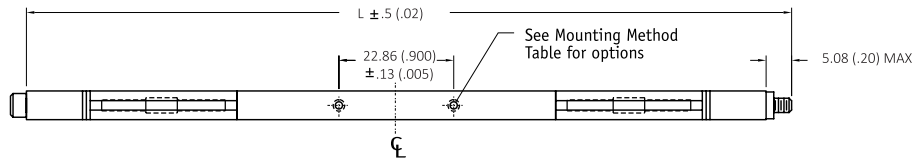
Provides additional resistance to shock and vibration



Units: mm(in)
unless specified otherwise,
.xx = ± .25, .x = ± .5
(.xxx = ± .010, .xx = ± .02)

MOUNTING HOLE LOCATION

22.86 (.900) hole spacing centered on mounting body
-10 thru -13 2 holes
-14 thru -24 4 holes



FINISH TABLE

CODE LETTER	SURFACE FINISH
[blank]	CHEMICAL FILM PER MIL-DTL-5541, TYPE I, CLASS 1A, GOLD, NON ROHS COMPLIANT
CC	CHEMICAL FILM PER MIL-DTL-5541, TYPE II, CLASS 1A, CLEAR
EN	ELECTROLESS NICKEL PER MIL-C-26074, CLASS 4, GRADE B, BRIGHT
N	NICKEL PLATE PER QQ-N-290, CLASS 1, GRADE G, BRIGHT
B	BLACK ANODIZE PER MIL-A-8625, TYPE II, CLASS 2
B3	HARD BLACK ANODIZE PER MIL-A-8625, TYPE III, CLASS 2
B3D	HARD BLACK ANODIZE WITH DRY FILM LUBE PER MIL-L-46010

MOUNTING METHOD TABLE

CODE LETTER	METHOD
[blank]	2-56 UNC-2B TAPPED HOLE
R	RIVET MOUNT (Ø 1.70 + .10/-0.03 (.067 + .004/.001) THRU □ Ø3.96 (.156) ∇ 5.08 (.200) √ Ø 3.56 (.140) x 100°) RIVET "R" PARTS ARE SHIPPED UNASSEMBLED AND EXCLUDE ALIGNMENT PINS
A	NO MOUNTING HOLES
T	0-80 UNF-2B TAPPED HOLE
M2	M2 X .40 TAPPED HOLE
M	M2.5 X .45 TAPPED HOLE

*NOTE: FOR TORQUE LIMITING (TLC) VERSION:
VISUAL INDICATOR (VI), LOCK/FLAT WASHER (LF) NOT AVAILABLE
ONE ALIGNMENT SPRING FOR -10 TO -15 LENGTHS
MUST CLICK 3+ TIMES FOR PROPER INSTALLATION

Part Number Code	40-5	VI	-	10	-	B	-	LF	-	LN	-	T	-	L
Type														
Torque Limiting Version* _____														
Standard version with Visual Indicator _____		VI												
Standard version _____														[Blank]
Length														
Length in 12.7 (.50) increments _____				10										[127.0 (5.00)]
_____														to 24 [304.8 (12.00)]
Finish														
BlackAnodized _____														B
Or select code letter from Finish Table														
Lock/Flat Washers and Locknut														
Lock Washer and Flat Washer _____														LF
None _____														[Blank]
Lock Nut _____														LN
None _____														[Blank]
Mounting														
Standard 2-56 UNC-2B tapped holes _____														[Blank]
or choose from Mounting Method Table														
Lock Patch														
Lock Patch _____														L
None _____														[Blank]



SCHROFF