

ateck audio

CATÁLOGO DE PRODUCTOS





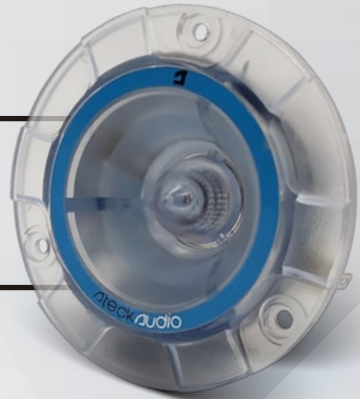
ateck audio



Diseño · Calidad · Desempeño



Tweeter	PRM 12P
Voice coil: 1" HIGH TEMPERATURE VOICE COIL Body Type: INJECTION PLASTIC FRAME Impedance: 4 ohm Sensitivity: 98 db Magnet Type: High Grade Ferrite Frequency Response: 2 Khz to 20 Khz Power: 180w	
+ prime series	



Tweeter	ACE 10S
Voice coil: 1" HIGH TEMPERATURE VOICE COIL Body Type: 3.75" DIE CAST ALUMINUM FRAME Impedance: 4 ohm Sensitivity: 102 db Magnet Type: High Grade Ferrite Frequency Response: 2 Khz to 20 Khz Power: 220w	



+ ace series



ACE 12S	Tweeter
Voice coil: 1" HIGH TEMPERATURE VOICE COIL Body Type: 3.75" DIE CAST ALUMINUM FRAME Impedance: 4 ohm Sensitivity: 102 db Magnet Type: High Grade Ferrite Frequency Response: 2 Khz to 20 Khz Power: 220w	

+ ace series

Tweeter	ACE 15B
Voice coil: 1" HIGH TEMPERATURE VOICE COIL Body Type: 3.75" DIE CAST ALUMINUM FRAME Impedance: 4 ohm Sensitivity: 102 db Magnet Type: High Grade Ferrite Frequency Response: 2 Khz to 20 Khz Power: 220w	



+ ace series





ACE 20BS

Tweeter

Voice Coil: 1" TITANIUM SUPER TWEETER
 Body Type: DIE CAST ALUMINUM FRAME
 Impedance: 4 ohm
 Sensitivity: 102db
 Magnet: 15mm magnet
 Magnet Type: High Grade Ferrite
 Frequency Response: 4 Khz to 20 Khz
 Power: 280W

+ ace series

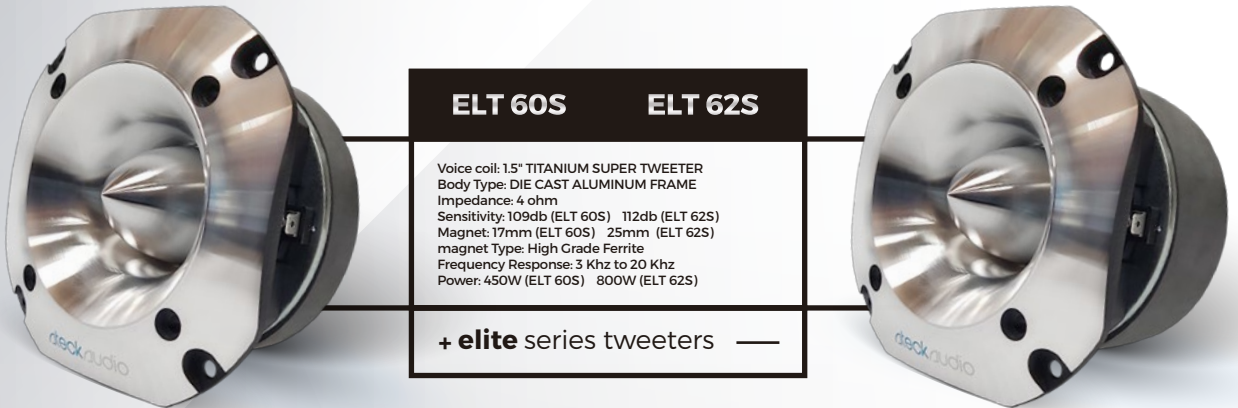


Tweeter

ACE 50BS

Voice Coil: 1.75" TITANIUM SUPER TWEETER
 Body Type: DIE CAST ALUMINUM FRAME
 Impedance: 4 ohm
 Sensitivity: 103db
 Magnet: 17mm magnet
 Magnet Type: High Grade Ferrite
 Frequency Response: 4 Khz to 20 Khz
 Power: 400W

+ ace series



ELT 60S

ELT 62S

Voice coil: 1.5" TITANIUM SUPER TWEETER
 Body Type: DIE CAST ALUMINUM FRAME
 Impedance: 4 ohm
 Sensitivity: 109db (ELT 60S) 112db (ELT 62S)
 Magnet: 17mm (ELT 60S) 25mm (ELT 62S)
 magnet Type: High Grade Ferrite
 Frequency Response: 3 Khz to 20 Khz
 Power: 450W (ELT 60S) 800W (ELT 62S)

+ elite series tweeters



Tweeter

PRO 45N

Voice coil: 1.5" TITANIUM SUPER TWEETER
 Body Type: DIE CAST ALUMINUM FRAME
 Impedance: 4 ohm
 Sensitivity: 109db
 Magnet: 17mm magnet
 magnet Type: High Grade Ferrite
 Frequency Response: 3 Khz to 20 Khz
 Power: 450W

+ pro series



+ ace series

ACE 40MC

Mid Range

Power: 40 RMS
1.4 High Temperature Voice Coil
High Grade Ferrite Magnet
Stamped Steel Basket
4 ohm Impedance
Press Paper Cone
Piezo Tweeter
SPL 89 dB



+ ace series

Mid Range

ACE 52MC

Power: 75 RMS
1.5 High Temperature Voice Coil
High Grade Ferrite Magnet
Stamped Steel Basket
4 Ohm Impedance
Press Paper Cone
Piezo Tweeter
SPL 91dB



+ ace series

ACE 65MC

Mid Range

Power: 90 RMS
1.5 High Temperature Voice Coil
High Grade Ferrite Magnet
Stamped Steel Basket
4 Ohm Impedance
Press Paper Cone
Piezo Tweeter
SPL 93dB



+ ace series

Mid Range

ACE 80MC

Basket material: Steel
Cone material: Paper cone with cloth surround
Nominal diameter: 6.5 in
Nominal impedance: 4 ohm
Power handling: Rated 50 W - Peak: 125 W
Sensitivity: 93 dB
Frequency response: 100-10,000 Hz
Voice coil diameter: 1.5 in
Magnet weight: 20 oz





PRM 80M

Mid Range

Size: 8"
 Power RMS: 125 W
 Power Max: 1000 W
 Basket Type: ABS
 Magnet: 30.6 oz
 Impedance: 4Ω
 Frequency Response: 105-10 KHz
 Mounting Hole: 20 cm
 Mounting Depth: 7.4 cm

+ prime series

Mid Range

ACE 840P

Nominal diameter (inch): 8(in)
 Overall Diameter: 202 mm
 Baffle Cutout Diameter: 184 mm
 Depth: 88 mm
 Nominal Impedance: 4 ohm
 Power Handling: 1600 Watts
 Sensitivity (1w/m): 98 dB
 Frequency Range: 100 Hz to 8 KHz
 Voice Coil Diameter: 1.5 in (38.6 mm)
 Voice Coil material: CCAW
 Magnet: Ferrite material



+ prime series



ACE 850

Mid Range

Voice Coil: 35mm
 Flat Wire Aluminum Voice Coil
 Power: 135 RMS
 Basket: Plastic
 SPL: 93dB
 High Grade Ferrite Magnet
 Plastic Grills Included

+ ace series

Mid Range

PRO 82FR

Diameter: 8"
 Impedance: 4Ω
 Sensitivity: 96dB
 Power: 150 RMS
 Max: 300
 Frequency Response: 80-2500 Hz
 High Grade Ferrite Magnet
 2" High Temperature Voice Coil
 Competition series



+ pro series



+ pro series

PRO 84N

Mid Range

1.8"
3" High Temperature Voice Coil
Neodymium Magnet
Frequency Response: 100-3500 Hz
Nominal Impedance: 4Ω
Competition Series
RMS Power Handling: 300W
Sensitivity: 101dB 1w/1m

Mid Range	ELT 82P
<p>Max Power Handling: 400W RMS Power Handling: 200W Frequency Response: 90Hz-5KHz Nominal Impedance: 8Ω Sensitivity: 98 dB Magnet: Ferrite Voice Coil Diameter: 2" CCAW Cone: Paper Cone / Cloth Surround Basket: Cast Aluminium</p>	

+ elite series



+ elite series

ELT 102P

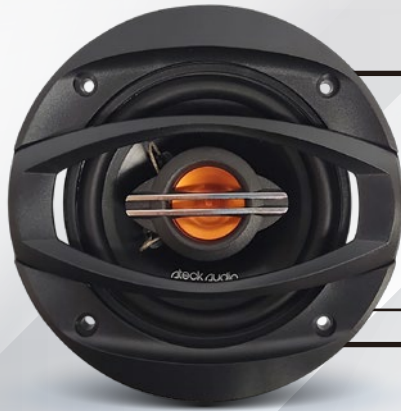
Mid Range

Max Power Handling: 700W
RMS Power Handling: 350W
Frequency Response: 80Hz-4KHz
Nominal Impedance: 8Ω
Sensitivity: 100 dB
Magnet: Ferrite
Voice Coil Diameter: 3" CCAW
Cone: Paper Cone / Cloth Surround
Basket: Cast Aluminium

Mid Range	ELT 122P
<p>Max Power Handling: 800W RMS Power Handling: 400W Frequency Response: 50Hz-3KHz Nominal Impedance: 8Ω Sensitivity: 101 dB Magnet: Ferrite Voice Coil Diameter: 3" CCAW Cone: Paper Cone / Cloth Surround Basket: Cast Aluminium</p>	

+ elite series





+ prime series

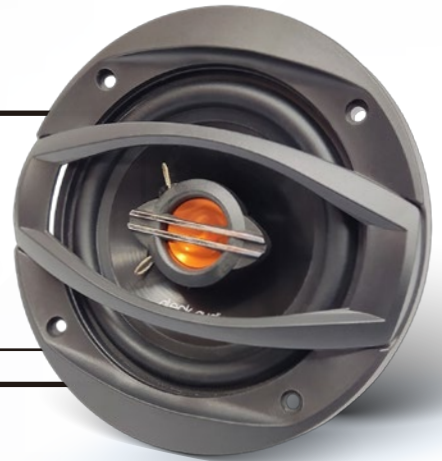
PRM C43

Speaker

Size: 4"
 Power RMS: 20 W
 Power Max: 270 W
 Basket Type: Metal
 Magnet: 3.6 oz
 Impedance: 4Ω
 Sensitivity: 81dB
 Frequency Response: 50-20 Khz
 Mounting Hole: 11.5 cm
 Mounting Depth: 4.2 cm



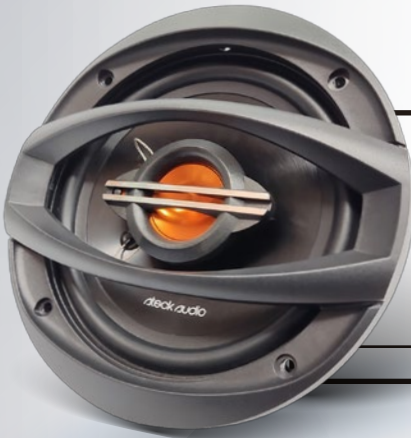
+ prime series



Speaker

PRM C53

Size: 5"
 Power RMS: 25 W
 Power Max: 300 W
 Basket Type: Metal
 Magnet: 3.6 oz
 Impedance: 4Ω
 Sensitivity: 82dB
 Frequency Response: 80-20 Khz
 Mounting Hole: 13.45 cm
 Mounting Depth: 4.5 cm



+ prime series

PRM C653

Speaker

Size: 6.5"
 Power RMS: 100 W
 Power Max: 350 W
 Basket Type: Metal
 Magnet: 7.8 oz
 Impedance: 4Ω
 Sensitivity: 80dB
 Frequency Response: 75-20 Khz
 Mounting Hole: 15.5 cm
 Mounting Depth: 4.6 cm



+ prime series



Speaker

PRM C693

Size: 6.9"
 Power RMS: 40 W
 Power Max: 650 W
 Basket Type: Metal
 Magnet: 10 oz
 Impedance: 4Ω
 Sensitivity: 86dB
 Frequency Response: 50-20 Khz
 Mounting Hole: 16.5 cm x 11.8 cm
 Mounting Depth: 7.45 cm



PRM CO65 Component Speaker System

Max Power: 100W
 RMS Power: 50W
 Impedance: 40hm
 Sensitivity@1W/1M: 89dB
 Frequency Range: 65-20,000Hz

Tweeter
 Frame: Plastic
 Dome: Silk
 Voice Coil: 0.79" (20mm)
 Magnet: Neodymium

Woofer
 Frame: 6.5 Steel with black painting
 Cone: PP with rubber surround
 Voice Coil: 1" (25mm)
 Magnet: Ferrite 480x15mm 10oz

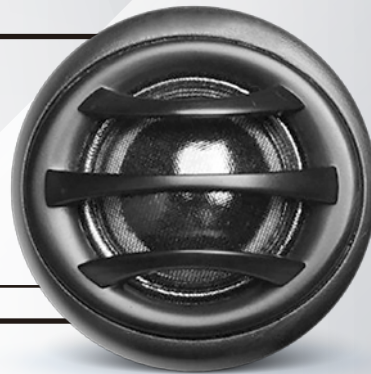
+ prime series

Speaker

TW 40S

Tweeter
 Frame: Plastic
 Dome: Silk
 Voice Coil: 40mm Silk Dome and Voice Coil 25mm
 Magnet: Neodymium
 RMS Power: 15W
 Max Power: 50W
 Sound Quality Product
 Impedance: 4Ω
 Frequency Range: 2,000-18,000Hz
 Sensitivity: 98dB

+ ace series



ateck audio

PRM 104SH

Subwoofer

Size: 10"
 Power RMS: 150W
 Power Max: 300W
 Basket Type: METAL
 Magnet: 25oz
 Impedance: 4Ω
 Sensitivity: 86dB
 Frequency Response: 20-500hz
 Mounting Hole: 24.5cm
 Mounting Depth: 6.7cm

+ prime series



Subwoofer

PRM 124SH

Size: 12"
 Power RMS: 175W
 Power Max: 350W
 Basket Type: METAL
 Magnet: 26oz
 Impedance: 4Ω
 Sensitivity: 85dB
 Frequency Response: 31-500hz
 Mounting Hole: 29.65cm
 Mounting Depth: 6.7cm

+ prime series





PRM 124

Subwoofer

Size: 12"
 Power RMS: 650 W
 Power Max: 1300 W
 Basket Type: Iron
 Magnet: 44 oz
 Impedance: 4Ω
 Sensitivity: 90dB
 Frequency Response: 20-800 Khz
 Mounting Hole: 32.3 cm
 Mounting Depth: 12.15 cm

+ **prime series**

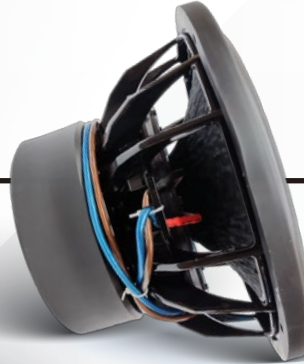
Subwoofer

ELT 124D

Nominal diameter: 12 Inch
 Frequency response: 20-500Hz
 RMS Power: 500W
 MAX Power: 2000W
 Magnet: 134Oz
 Sensitivity: 84dB
 Voice Coil: 3 Inch
 Impedence: 4+4Ω



+ **elite series**



PRO 802

Subwoofer

Impedance: 2Ω
 3" Aluminum Flat Wire Voice Coil
 Power RMS: 800W
 Power Max: 1600W
 Sensitivity: 87dB
 2 Layer Nomex Spider
 Aluminum Basket
 Diameter: 12"
 Magnet Weight: 180 oz
 40mm Winding Height

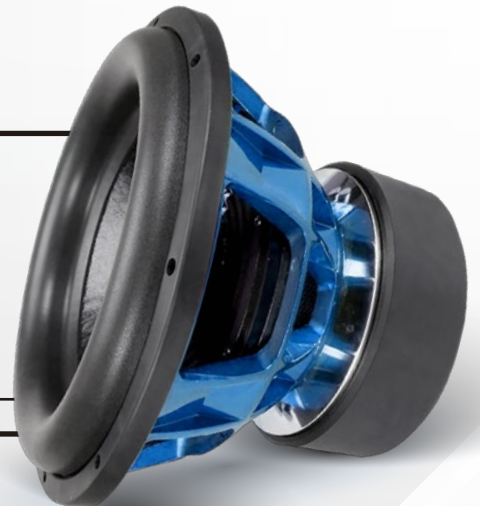
+ **pro series**

Subwoofer

PRO 1560

Diameter: 15"
 Power RMS: 3000W
 Power Max: 6000W
 Triple Magnet: 450 oz
 Voice Coil: 4"
 4 Layer Flat Aluminum Coil
 80mm Winding Height
 Impedance: Dual 4Ω
 Aluminum Basket
 Non-Press Paper Cone
 Aluminum Basket
 40mm Winding Height

+ **pro series**





+ prime series

PRM A405

Amplifier

RMS @40HM: 4X50W
RMS @20HM: 4X70W
Bridge @40HM: 2X150W
Low Pass Filter: 50Hz-250Hz
High Pass Filter: 12Hz-3kHz
Frequency Response: 20Hz-20kHz
S/N: >85dB
Input Sensitivity: 0.2 6V
THD: <-0.01%
Operation Voltage: 9 16V
Fuse Rating: 20A²



+ prime series

Amplifier

PRM A406

RMS @4HM: 60X4W
RMS @2HM: 90X4W
Bridge @40HM: 2X150W
Low Pass Filter: 50Hz-250Hz
High Pass Filter: 12Hz-3kHz
Frequency Response: 20Hz-20kHz
S/N: >85dB
Input Sensitivity: 0.2 6V
THD: <-0.01%
Operation Voltage: 9 16V



+ ace series

ACE A410

Amplifier

4 Channel Class AB Amplifier

RMS:100x4@4 Ohm
High efficiency mosfet power supply
Variable low pass & high pass crossover
Tri-mode output configurations
2 Ohm stable circuits
Thermal/short-circuit/overloading protection

Power output 4Ω(watts): 100W X 4 CH
Power output 2Ω(watts): 150W X 1 CH
300W X 2 CH bridged channel pair
THD: <-0.1%
Frequency response: 20Hz-20kHz
Signal to noise ratio: >85dB
Sensitivity: 0.2-6V
recommended fuse type: 40 A X 2
Dimensions: 404mm X 185mm X 50mm



+ pro series

PRO 3K1

Amplifier

1 channel class D amplifier

Military spec audiophile grade components
 1 Ohm stable circuits
 Variable lower pass electronic crossover
 Extreme small footprint for easy installation
 Thermal/short-circuit/overloading protection
 2500 RMS at 12.6V at 1 Ohm load

Power output 4Ω(watts):
 1000W X 1 CH at 12.6V/1400W X 1CH at 13.8V
 Power output 2Ω(watts):
 1500W X 1 CH at 12.6V/2100W X 1CH at 13.8V
 Power output 1Ω(watts):
 2500W X 1 CH at 12.6V/3000W X 1CH at 13.8V
 THD: -0.5%
 Frequency response ($\pm 3\text{dB}$): 10Hz-20kHz
 Signal to noise ratio: >85dB
 Sensitivity: 0.2-6V
 Dimensions: 230mm X 228mm X 68.5mm



Amplifier

PRO 5K1

1 channel class D amplifier

Military spec audiophile grade components
 1 Ohm stable circuits
 Variable lower pass electronic crossover
 Extreme small footprint for easy installation
 Thermal/short-circuit/overloading protection
 5000 RMS at 13.8V at 1 Ohm load

Power output 4Ω(watts): 2200W X 1 CH
 Power output 2Ω(watts): 3300W X 1 CH
 Power output 1Ω(watts): 5000W X 1 CH
 THD: -0.5%
 Frequency response ($\pm 3\text{dB}$): 10Hz-20kHz
 Signal to noise ratio: >85dB
 Sensitivity: 0.2-6V
 Dimensions: 440mm X 228mm X 68.5mm



+ pro series



+ pro series

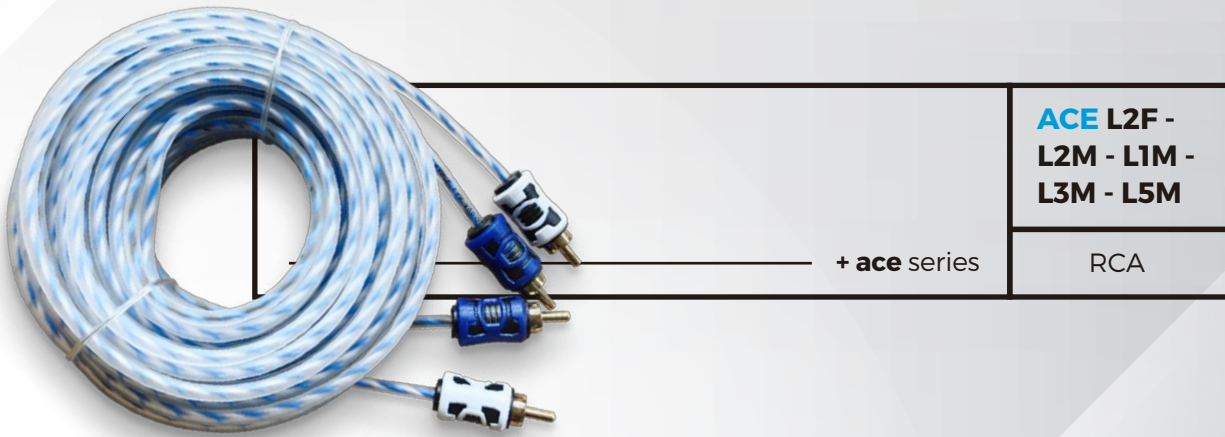
PRO 8K1

Amplifier

1 channel class D amplifier

Military spec audiophile grade components
 1 Ohm stable circuits
 Variable lower pass electronic crossover
 Extreme small footprint for easy installation
 Thermal/short-circuit/overloading protection
 8000 RMS at 13.8V at 1 Ohm load

Power output 4Ω(watts): 3500W X 1 CH
 Power output 2Ω(watts): 8800W X 1 CH
 Power output 1Ω(watts): 8000W X 1 CH
 THD: -0.5%
 Frequency response: 10Hz-20kHz
 Signal to noise ratio: >85dB
 Sensitivity: 0.2-6V
 Dimensions: 540mm X 228mm X 68.5mm



**ACE L2F -
L2M - L1M -
L3M - L5M**

+ **ace** series

RCA

**ELT R1M
R2M R3M
R4M R5M
RY2M RY2F**

Power Cable: 5 m
Ground Cable: 1 m
5 m 16 ga Speaker Cable
2 Piezas RCA 5m
5 m Cable Remoto
Mini ANL Fuse Holder de 80 amperios
Accesorios

RCA

+ **elite** series



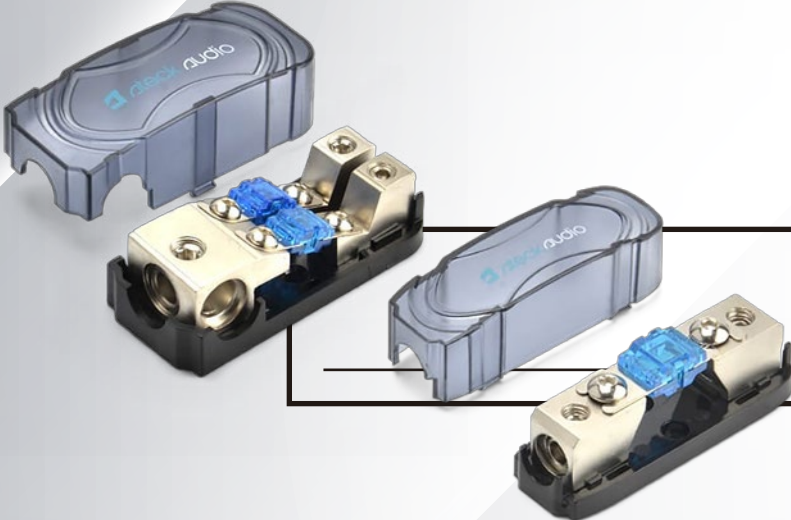
Power Cable: 5 m
Ground Cable: 1 m
5 m 16 ga Speaker Cable
2 Piezas RCA 5m
5 m Cable Remoto
Mini ANL Fuse Holder de 80 amperios
Accesorios

**PRM 8GK
PRM 4GK**

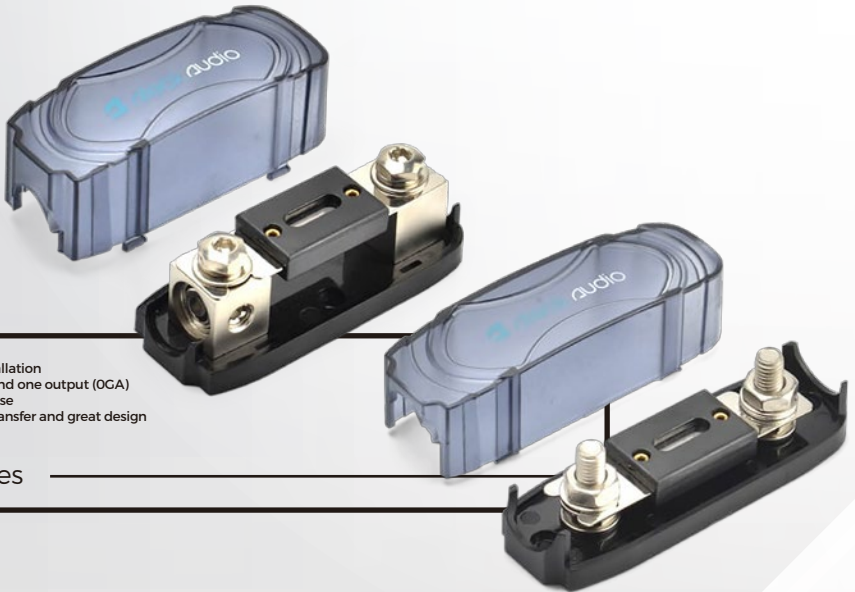
+ **prime** series

Amp Kit

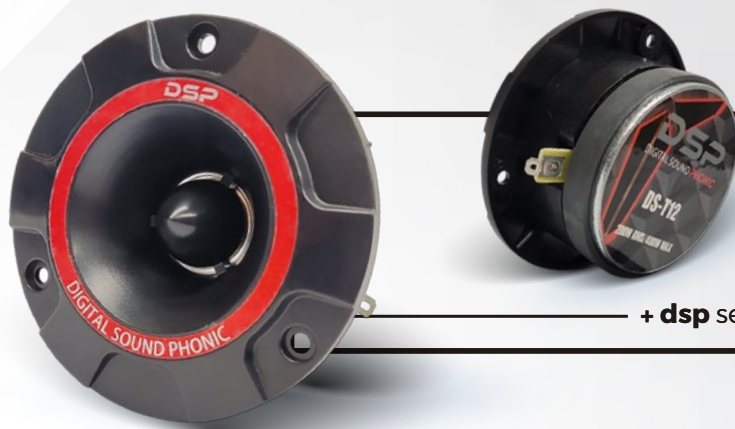
<p>ACE L8GK ACE L4GK ACE LOGK</p>	<p>Power Cable: 5 m Ground Cable: 1 m 5 m 16 ga Speaker Cable 2 Piezas RCA 5m 5 m Cable Remoto Mini ANL Fuse Holder de 80 amperios Accesorios</p>
<p>Amp Kit</p>	<p>+ ace series</p>



<p>ACE LFM100 ACE LFM200</p>	<p>Ace LFM100: 1 input (4GA) & 1 output (4GA) With 100A Mini ANL fuse Ace LFM200: 1 input (4GA) and 2 output (4GA) With 120A & 100A Mini ANL fuse</p>	<p>Fuse Holder</p>
<p>+ ace series</p>		



<p>ACE LF0GB ACE LF0GT</p>	<p>Fast and easy installation One input (0GA) and one output (0GA) With 200A ANL Fuse Excellent power transfer and great design</p>
<p>Fuse Holder</p>	<p>+ ace series</p>



DS T12	Tweeter
Nominal diameter: 1 inch Frequency response: 2.0K-20 kHz RMS Power: 200 W MAX Power: 400 W Sensitivity: 99 dB Voice Coil: 1 inch Impedence: 4 Ohm	

+ dsp series

Mid Range	DSP 804
Nominal diameter: 8 inch Frequency response: 50-5000 Hz RMS power: 100 W MAX power: 1000 W Sensitivity: 93 dB Voice coil: 1.5 inch Impedence: 4 Ohm	



+ dsp series



DSP 12S	Subwoofer
Voice coil: 1.5" TITANIUM SUPER TWEETER Body Type: DIE CAST ALUMINUM FRAME Impedance: 4 ohm Sensitivity: 109db Magnet: 17mm magnet magnet Type: High Grade Ferrite Frequency Response: 3 Khz to 20 Khz Power: 450W	

+ dsp series

Radio	DSP 200BT
WMA/MP3/FM/USB/SD Player with BT FM Receiver USB/SD slot Front AUX in Preset EQ 18 presets memory (18FM) Power output 60 Watts X 4 Digital clock display Android phone App remote Control via Bluetooth	



+ dsp series





ateck audio

www.ateckaudio.com
