

[www.ala.org.au](http://www.ala.org.au)

# The Atlas of Living Australia



**NCRIS**  
National Research  
Infrastructure for Australia  
An Australian Government Initiative



The ALA is a national collaborative research infrastructure supported by the Australian Government. It is led by CSIRO in partnership with the Australian biological community.





Search the Atlas ...

Submit

## Explore the Atlas of Living Australia

### Australia's species

[View all](#)



Search for Australian flora and fauna species by common, scientific name or search by category.

[Browse species](#)

### Species by location

[View all](#)



Search by pre-defined region, or enter an address or location to find the recorded species nearby.

[Browse locations](#)

### Collections

[View all](#)



Learn about the institution, the collections they hold and view records of specimens that have been databased.

[Browse collections](#)

### Mapping & analysis

[View all](#)



A spatial portal for investigating species occurrences within

### Data sets

[View all](#)



Refine the list of all the data sets contained within the Atlas

### Partner Profiles

[View all](#)



View our partner profiles and see how our key contributors

## Sharing biodiversity knowledge

Contributed by Australia's academic, scientific, environmental communities and you.

[Get involved](#)

## Blog & News Updates

[View all](#)

The Atlas welcomes two new university herbaria data providers.

ALA Educational Resources for primary school classes.

COMING SOON: New Phylogenetic 'Tree of Life' Tools



Search the Atlas ...

Submit

### Explore the Atlas of Living Australia

Sharing biodiversity knowledge

ALA is a national biodiversity portal – bringing together at a national level what several different initiatives do at a global level.

We do not capture, own or curate data – We aggregate data.

#### Mapping & analysis



A spatial portal for investigating species occurrences within

#### Data sets



Refine the list of all the data sets contained within the Atlas

#### Partner Profiles



View our partner profiles and see how our key contributors

providers.

ALA Educational Resources for primary school classes.

COMING SOON: New Phylogenetic 'Tree of Life' Tools



Search the Atlas ...

Submit

## Explore the Atlas of Living Australia

### Australia's species

[View all](#)



Search for Australian flora and fauna species by common, scientific name or search by category.

[Browse species](#)

### Species by location

[View all](#)



Search by pre-defined region, or enter an address or location to find the recorded species nearby.

[Browse locations](#)

### Collections

[View all](#)



Learn about the institution, the collections they hold and view records of specimens that have been databased.

[Browse collections](#)

### Mapping & analysis

[View all](#)



A spatial portal for investigating species occurrences within

### Data sets

[View all](#)



Refine the list of all the data sets contained within the Atlas

### Partner Profiles

[View all](#)



View our partner profiles and see how our key contributors

### Sharing biodiversity knowledge

Contributed by Australia's academic, scientific, environmental communities and you.

[Get involved](#)

### Blog & News Updates

[View all](#)

The Atlas welcomes two new university herbaria data providers.

ALA Educational Resources for primary school classes.

COMING SOON: New Phylogenetic 'Tree of Life' Tools

Home → Australia's species → *Callocephalon fimbriatum*

# *Callocephalon fimbriatum* (Grant, 1803)

## Gang-gang Cockatoo

[Record a sighting](#)[Alerts ▲](#)

### Name source

[Australian Faunal Directory](#)

### Rank

Species

### Data links

[LSID](#)[JSON / WMS / RDF](#)

### Species presence



Recorded In Australia



Terrestrial Habitats

### Conservation status



Least Concern



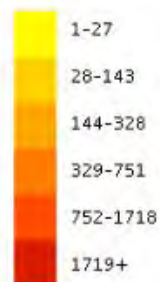
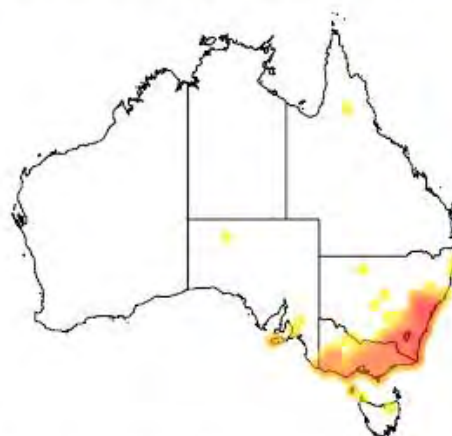
Endangered Populations



Vulnerable

[Overview](#)[Gallery](#)[Names](#)[Classification](#)[Records](#)[Literature](#)[Sequences](#)

## Occurrence records map

[View records list](#)[Map & analyse records](#)

Source: Flickr EOL

Image by: Leo

## Sounds



Source: Australian National Wildlife Collection

[View more details of this audio](#)



Terrestrial Habitats

Conservation status

IUCN Least Concern

NSW Endangered Populations

NSW Vulnerable

Australian Museum

Museum Victoria

Museum Victoria

Museum Victoria



Callocephalon fimbriatum  
Museum Victoria



Callocephalon fimbriatum  
Museum Victoria



Callocephalon fimbriatum  
Museum Victoria



Callocephalon fimbriatum  
Museum Victoria

Images



Callocephalon fimbriatum



Callocephalon fimbriatum



Callocephalon fimbriatum



Callocephalon fimbriatum



Callocephalon fimbriatum



Callocephalon fimbriatum



Callocephalon fimbriatum



Callocephalon fimbriatum



Callocephalon fimbriatum



Callocephalon fimbriatum



Callocephalon fimbriatum



Home → Australia's species → *Callocephalon fimbriatum*

# *Callocephalon fimbriatum* (Grant, 1803)

## Gang-gang Cockatoo

### Name source

[Australian Faunal Directory](#)

### Rank

Species

### Data links

[LSID](#)

[JSON / WMS / RDF](#)

### Species presence



Recorded In Australia



Terrestrial Habitats

### Conservation status



Least Concern



Endangered Populations



Vulnerable

[Overview](#)

[Gallery](#)

[Names](#)

[Classification](#)

[Records](#)

[Literature](#)

[Sequences](#)

## Working classification

kingdom **ANIMALIA**

phylum **CHORDATA**

subphylum **VERTEBRATA**

suprageneric **GNATHOSTOMATA**

class **AVES**

order **PSITTACIFORMES**

family **CACATUIDAE**

subfamily **Cacatuinae**

tribe **Cacatuini**

genus **Callocephalon**

**species** *Callocephalon fimbriatum*

Home → Australia's species → *Callocephalon fimbriatum*

# *Callocephalon fimbriatum* (Grant, 1803)

Gang-gang Cockatoo

[Record a sighting](#)[Alerts](#) 

## Name source

[Australian Faunal Directory](#)

## Rank

Species

## Data links

[LSID](#)[JSON / WMS / RDF](#)

## Species presence



Recorded In Australia



Terrestrial Habitats

## Conservation status



Least Concern



Endangered Populations



Vulnerable

[Overview](#)[Gallery](#)[Names](#)[Classification](#)[Records](#)[Literature](#)[Sequences](#)

## Genbank - view all results - Items: 1 to 20 of 35

*Callocephalon fimbriatum* voucher WAus B05-505 cytochrome oxidase subunit 1 (COI) gene, partial cds; mitochondrial  
609 bp linear DNA  
Accession: JN801422.1 GI: 355331379

*Callocephalon fimbriatum* voucher WAus B05-415 cytochrome oxidase subunit 1 (COI) gene, partial cds; mitochondrial  
619 bp linear DNA  
Accession: JN801421.1 GI: 355331377

*Callocephalon fimbriatum* voucher ANWC 34252 cytochrome oxidase subunit 1 (COI) gene, partial cds; mitochondrial  
570 bp linear DNA  
Accession: HQ629759.1 GI: 354992413

*Callocephalon fimbriatum* voucher ANWC 34252 NADH dehydrogenase subunit 2 (ND2) gene, partial cds; mitochondrial  
761 bp linear DNA  
Accession: HQ629724.1 GI: 354992343

*Callocephalon fimbriatum* voucher ANWC 34252 alpha-tropomyosin (TROP) gene, exon 6 and partial cds  
529 bp linear DNA  
Accession: HQ629683.1 GI: 354992262

*Callocephalon fimbriatum* voucher ANWC 34252 transforming growth factor beta 2 (TGFB2) gene, exons 5, 6 and partial cds  
625 bp linear DNA  
Accession: HQ629638.1 GI: 354992172

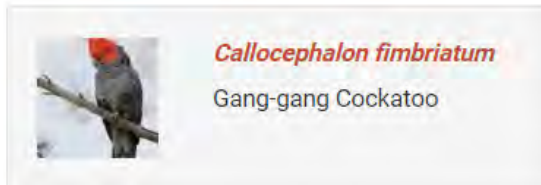
*Callocephalon fimbriatum* voucher B05\_388 nonhistone chromosomal protein HMG-17 (HMGN2) gene, exons 3, 4 and partial cds  
468 bp linear DNA  
Accession: JF414397.1 GI: 330686792



## Report a Sighting

### Species

Unsure of the species name? Try the location-based [species suggestion tool](#)



Not the right species? To **change** identification, type a scientific or common name into the box below and choose from the auto-complete list.

How confident are you with the species identification?  Confident  Uncertain

(Optional) Tag this sighting with species group and/or sub-group:

### Images

Optional. Add one or more images. Image metadata will be used to automatically set date and location fields (where available)  
Hint: you can drag and drop files onto this window

Licence:

### Location

OR



Latitude (decimal):

Longitude (decimal):

Accuracy (metres):

Source of coordinates:

Home → Australia's species → *Callocephalon fimbriatum*

# *Callocephalon fimbriatum* (Grant, 1803)

## Gang-gang Cockatoo

[Record a sighting](#)[Alerts ▲](#)

### Name source

[Australian Faunal Directory](#)

### Rank

Species

### Data links

[LSID](#)[JSON / WMS / RDF](#)

### Species presence



Recorded In Australia



Terrestrial Habitats

### Conservation status



Least Concern



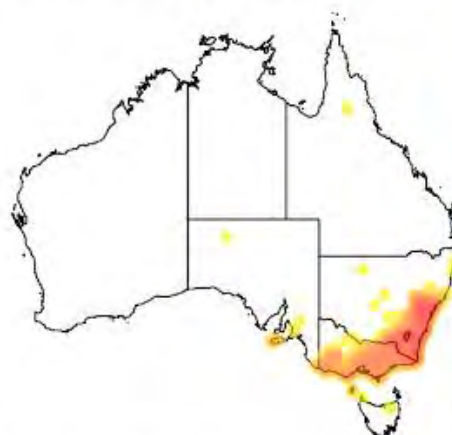
Endangered Populations



Vulnerable

[Overview](#)[Gallery](#)[Names](#)[Classification](#)[Records](#)[Literature](#)[Sequences](#)

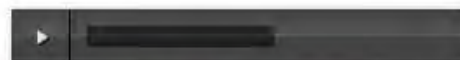
## Occurrence records map

[View records list](#)[Map & analyse records](#)

Source: Flickr EOL

Image by: Leo

## Sounds



Source: Australian National Wildlife Collection

[View more details of this audio](#)



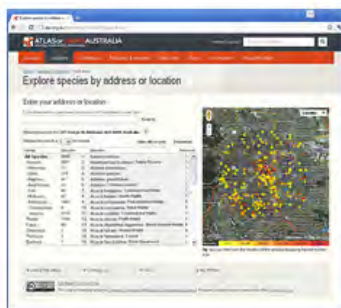
## Species by location

### Explore by pre-defined region



Pre-defined regions include states and territories, local government areas, biogeographic regions, marine regions, management regions and more. [Explore regions](#)

### Explore by address or location



Simply enter an address or location to find the recorded species nearby. You can set the size of the search area and download the results. [Explore your area](#)

Sharing biodiversity knowledge

Contributed by Australia's academic, scientific, environmental communities and you.

[Get involved](#)

### Blog & News Updates [View all](#)

The Atlas welcomes two new university herbaria data providers.

ALA Educational Resources for primary school classes.

COMING SOON: New Phylogenetic 'Tree of Life' Tools

### Connect with us



Home → Locations → Your Area

# Explore Your Area

Enter your location or address:

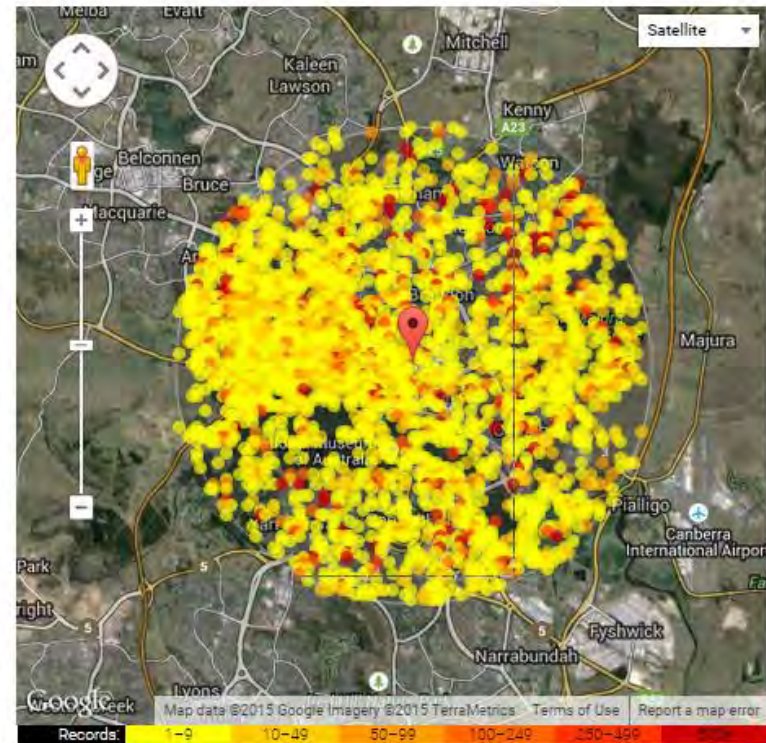
 

E.g. a street address, place name, postcode or GPS coordinates (as lat, long)

Showing records for **50 Marcus Clarke Street, Canberra ACT 2601, Australia**

Display records in a  km radius

Group	Species	Species : Common Name	Records
<b>All Species</b>	<b>6733</b>		
Animals	2077	1. <i>ARCTIINAE</i>	1
Mammals	39	2. <i>Abelia x grandiflora</i>	1
Birds	376	3. <i>Abelmoschus ficulneus</i> : Native Rosella	1
Reptiles	36	4. <i>Abelmoschus moschatus subsp. tuberosus</i> : Native Rosella	2
Amphibians	11	5. <i>Abutilon theophrasti</i> : Chigma Lantern	1
Fish	5	6. <i>Acacia acinacea</i> : Gold-dust Acacia	4
Molluscs	9	7. <i>Acacia acuminata</i> : Jam Wattle	2
Arthropods	1598	8. <i>Acacia adsurgens</i> : Whipstick Wattle	1
Crustaceans	1	9. <i>Acacia adunca</i> : Cascade Wattle	6
Insects	1550	10. <i>Acacia aestivalis</i>	1
Plants	4146	11. <i>Acacia alata var. biglandulosa</i>	1
Bryophytes	49	12. <i>Acacia alcockii</i> : Alcock's Wattle	1
Gymnosperms	42	13. <i>Acacia amblyophylla</i>	1
FernsAndAllies	107	14. <i>Acacia amoena</i> : Boomerang Wattle	1
Angiosperms	3845	15. <i>Acacia ampliceps</i> : Jila Jila Bush	1
Monocots	765	16. <i>Acacia anceps</i>	1
Dicots	3080	17. <i>Acacia andrewsii</i>	1
Fungi	155	18. <i>Acacia aneura var. microcarpa</i> : Mulga	1
Chromista	2	19. <i>Acacia aneura</i> : Mulga	1
Protozoa	20	20. <i>Acacia anthochaera</i> : Kimberly's Wattle	1
Bacteria	0	21. <i>Acacia aphylla</i> : Leafless Rock Wattle	1
Algae	0	22. <i>Acacia argyrophylla</i> : Silver Mulga	1
		23. <i>Acacia ashbyae</i>	1



Tips: you can fine-tune the location of the area by dragging the red marker icon

Home → Locations → Your Area

# Explore Your Area

Enter your location or address:



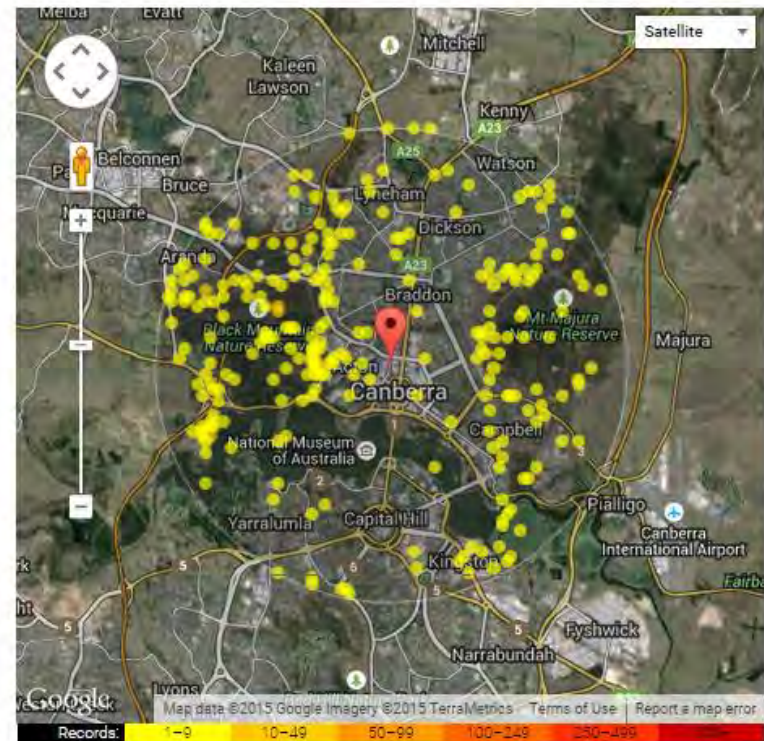
E.g. a street address, place name, postcode or GPS coordinates (as lat, long)

Showing records for: **50 Marcus Clarke Street, Canberra ACT 2601, Australia**

Display records in a  km radius



Group	Species	Species : Common Name	Records
All Species	6732	1. <i>Amphibolurus muricatus</i> : Jacky Lizard	15
Animals	2077	2. <i>Austrelaps superbus</i> : Lowland Copperhead	1
Mammals	39	3. <i>Chelodina (Chelodina) longicollis</i> : Eastern Snake-necked Turtle	17
Birds	376	4. <i>Christinus marmoratus</i> : Marbled Gecko	9
<b>Reptiles</b>	<b>36</b>	5. <i>Ctenotus robustus</i> : Robust Ctenotus	2
Amphibians	17	6. <i>Ctenotus taeniolatus</i> : Copper-tailed Skink	5
Fish	5	7. <i>Delma impar</i> : Striped Legless Lizard	2
Molluscs	9	8. <i>Delma inornata</i> : Patternless Delma	13
Arthropods	1598	9. <i>Diplodactylus vittatus</i> : Eastern Stone Gecko	2
Crustaceans	1	10. <i>Drysdalia coronoides</i> : White-lipped Snake	1
Insects	1550	11. <i>Egernia cunninghami</i> : Cunningham's Skink	11
Plants	4146	12. <i>Eulamprus quoyii</i> : Eastern Water-skink	2
Bryophytes	49	13. <i>Hemiergis decresiensis</i> : Three-toed Earless Skink	26
Gymnosperms	42	14. <i>Intellagama lesueurii howitti</i>	3
FernsAndAllies	107	15. <i>Intellagama lesueurii lesueurii</i> : Water Dragon	2
Angiosperms	3845	16. <i>Intellagama lesueurii</i> : Eastern Water Dragon	41
Monocots	765	17. <i>Lampropholis delicata</i> : Dark-flecked Garden Sunskink	65
Dicots	3080	18. <i>Lampropholis guichenoti</i> : Pale-flecked Garden Sunskink	1
Fungi	154	19. <i>Lialis burtonis</i> : Burton's Snake-lizard	1
Chromista	2	20. <i>Morethia boulengeri</i> : Boulenger's Snake-eyed Skink	5
Protozoa	20	21. <i>Notechis scutatus</i> : Tiger Snake	4
Bacteria	0	22. <i>Parasuta dwyeri</i> : Dwyer's Snake	2
Algae	0		



Tips: you can fine-tune the location of the area by dragging the red marker icon

Home → Locations → Your Area

# Explore Your Area

Enter your location or address:



E.g. a street address, place name, postcode or GPS coordinates (as lat, long)

Showing records for: **50 Marcus Clarke Street, Canberra ACT 2601, Australia**

Display records in a  km radius



Group	Species	Species : Common Name	Records
All Species	6732	13. <i>Hemiergis decresiensis</i> : Three-toed Earless Skink	26
Animals	2077	14. <i>Intellagama lesueurii howitti</i>	3
Mammals	39	15. <i>Intellagama lesueurii lesueurii</i> : Water Dragon	2
Birds	376	16. <i>Intellagama lesueurii</i> : Eastern Water Dragon	41
<b>Reptiles</b>	<b>36</b>	17. <i>Lampropholis delicata</i> : Dark-flecked Garden Sunskink	65
Amphibians	11	18. <i>Lampropholis guichenoti</i> : Pale-flecked Garden Sunskink	1
Fish	5	19. <i>Lialis burtonis</i> : Burton's Snake-lizard	1
Molluscs	9	20. <i>Morethia boulengeri</i> : Boulenger's Snake-eyed Skink	5
Arthropods	1598	21. <i>Notechis scutatus</i> : Tiger Snake	4
Crustaceans	1	22. <i>Parasuta dwyeri</i> : Dwyer's Snake	2
Insects	1550	23. <i>Pogona barbata</i> : Eastern Bearded Dragon	53
Plants	4146	24. <i>Pseudechis porphyriacus</i> : Red-bellied Black Snake	15
Bryophytes	49	25. <i>Pseudonaja textilis</i> : Eastern Brown Snake	87
Gymnosperms	42	26. <a href="#">species profile</a>   <a href="#">list of records</a>	
FernsAndAllies	107	27. <i>Ramphotyphlops nigrescens</i> : Blackish Blind Snake	1
Angiosperms	3845	28. <i>Saproscincus mustelinus</i> : Weasel Skink	1
Monocots	765	29. <i>Tiliqua nigrolutea</i> : Blotched Blue-tongue	5
Dicots	3080	30. <i>Tiliqua rugosa rugosa</i>	5
Fungi	154	31. <i>Tiliqua rugosa</i> : Bobtail	1
Chromista	2	32. <i>Tiliqua scincoides scincoides</i> : Common Blue-tongue	1
Protozoa	20	33. <i>Tiliqua scincoides</i> : Eastern Blue-tongue	59
Bacteria	0	34. <i>Tympanocryptis pinguicollis</i> : Grassland Earless Dragon	1
Algae	0		



Tips: you can fine-tune the location of the area by dragging the red marker icon

Home → Locations → Your Area

# Explore Your Area

Enter your location or address:

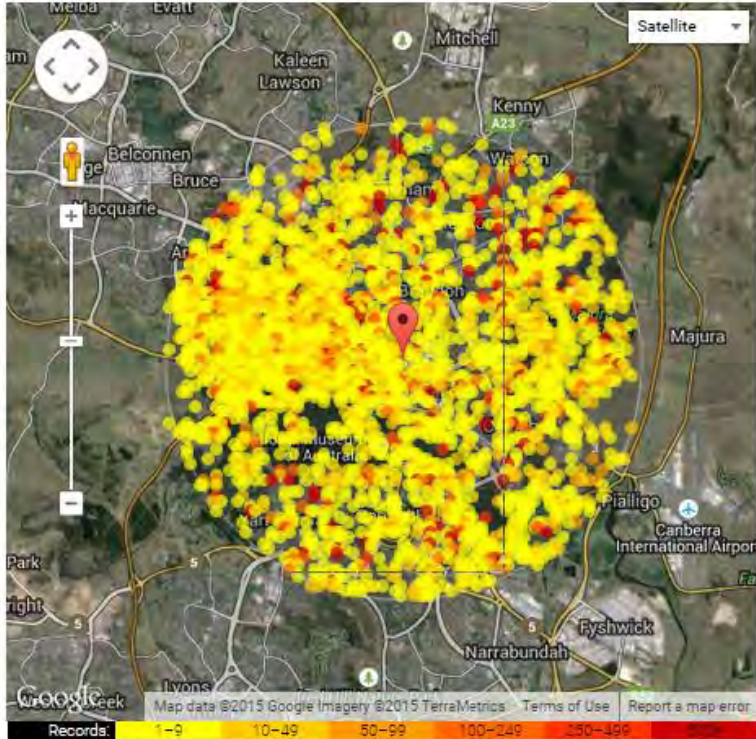


E.g. a street address, place name, postcode or GPS coordinates (as lat, long)

Showing records for: **50 Marcus Clarke Street, Canberra ACT 2601, Australia**

Display records in a  km radius

Group	Species	Species : Common Name	Records
<b>All Species</b>	<b>6733</b>		
Animals	2877		
Mammals	39		
Birds	376		
Reptiles	36		
Amphibians	11		
Fish	5		
Molluscs	9		
Arthropods	1598		
Crustaceans	1		
Insects	1550		
Plants	4146		
Bryophytes	49		
Gymnosperms	42		
FernsAndAllies	107		
Angiosperms	3845		
Monocots	765		
Dicots	3080		
Fungi	155		
Chromista	2		
Protozoa	20		
Bacteria	0		
Algae	0		
		1. ARCTIINAE	1
		2. <i>Abelia x grandiflora</i>	1
		3. <i>Abelmoschus ficulneus</i> : Native Rosella	1
		4. <i>Abelmoschus moschatus subsp. tuberosus</i> : Native Rosella	2
		5. <i>Abutilon theophrasti</i> : Chigma Lantern	1
		6. <i>Acacia acinacea</i> : Gold-dust Acacia	4
		7. <i>Acacia acuminata</i> : Jam Wattle	2
		8. <i>Acacia adsurgens</i> : Whipstick Wattle	1
		9. <i>Acacia adunca</i> : Cascade Wattle	6
		10. <i>Acacia aestivalis</i>	1
		11. <i>Acacia alata var. biglandulosa</i>	1
		12. <i>Acacia alcockii</i> : Alcock's Wattle	1
		13. <i>Acacia amblyophylla</i>	1
		14. <i>Acacia amoena</i> : Boomerang Wattle	1
		15. <i>Acacia ampliceps</i> : Jilla Jilla Bush	1
		16. <i>Acacia anceps</i>	1
		17. <i>Acacia andrewsii</i>	1
		18. <i>Acacia aneura var. microcarpa</i> : Mulga	1
		19. <i>Acacia aneura</i> : Mulga	1
		20. <i>Acacia anthochaera</i> : Kimberly's Wattle	1
		21. <i>Acacia aphylla</i> : Leafless Rock Wattle	1
		22. <i>Acacia argyrophylla</i> : Silver Mulga	1
		23. <i>Acacia ashbyae</i>	1



Tips: you can fine-tune the location of the area by dragging the red marker icon

# Occurrence records

Customise filters

674,263 results for [all records] - within 5.0 km of point(-35.27145,149.11092)

Selected filters: Spatial filter: CIRCLE

## Narrow your results

Taxonomic

Geospatial

Temporal

Record details

### Record type

- Fossil specimen (144)
- GenomicDNA (2,952)
- Human observation (634,559)
- Image (3,939)

choose more...

### Specimen type

- allotype (8)
- holotype (18)
- lectotype (1)
- paratypes (70)

choose more...

### Multimedia

- None (668,782)
- Image (5,481)

choose more...

### Collector

- 00b87a8bfc6113bd98c4c8c58629e54b9f95f2 (4)
- 01d7a333f7cfc86438e2c18e9164c0990d8ce447 (2)
- 023570bffa44d5ee8e02e8742601hdd1e8c39d1

### Occurrence status

- pres - pres (673,882)
- unkn - unkn (381)

choose more...

Attribution

### User

- Donald Hobern (2,051)
- Leo Berzins (111)
- Janet Russell (56)
- John La Salle (40)

Records Map Charts Record images

Downloads

Alerts

per page: 20 sort: Date added order: Descending

Species: *Juncus planifolius* | Broad Leaved Rush Date: 2011-02-01 State: Australian Capital Territory  
 Institution: Centre For Australian National Biodiversity Research Collection: Australian National Herbarium Basis Of Record: Preserved Specimen Catalog Number: CANB:CANB 873558.1  
[View record](#)

Species: *Isolepis sepulchralis* Date: 2011-02-01 State: Australian Capital Territory  
 Institution: Centre For Australian National Biodiversity Research Collection: Australian National Herbarium Basis Of Record: Preserved Specimen Catalog Number: CANB:CANB 873559.1  
[View record](#)

Species: *Eragrostis brownii* | Brown love grass Date: 2011-02-01 State: Australian Capital Territory  
 Institution: Centre For Australian National Biodiversity Research Collection: Australian National Herbarium Basis Of Record: Preserved Specimen Catalog Number: CANB:CANB 873560.1  
[View record](#)

Species: *Cyperus sanguinolentus* | Flat-sedge Date: 2011-02-01 State: Australian Capital Territory  
 Institution: Centre For Australian National Biodiversity Research Collection: Australian National Herbarium Basis Of Record: Preserved Specimen Catalog Number: CANB:CANB 873561.1  
[View record](#)

Species: *Leptospermum continentale* | Prickly Teatree Date: 2014-11-21 State: Australian Capital Territory  
 Institution: Centre For Australian National Biodiversity Research Collection: Australian National Herbarium Basis Of Record: Preserved Specimen Catalog Number: CANB:CANB 878594.1  
[View record](#)

Species: *Leptospermum brevipes* | Slender Tea Tree Date: 2014-11-21 State: Australian Capital Territory  
 Institution: Centre For Australian National Biodiversity Research Collection: Australian National Herbarium Basis Of Record: Preserved Specimen Catalog Number: CANB:CANB 878595.1  
[View record](#)

Species: *Festuca arundinacea* | Giant Fescue Date: 2014-11-26 State: Australian Capital Territory  
 Institution: Centre For Australian National Biodiversity Research Collection: Australian National Herbarium Basis Of Record: Preserved Specimen Catalog Number: CANB:CANB 878600.1  
[View record](#)

Species: *Haloragis heterophylla* | Variable raspwort Date: 2014-11-26 State: Australian Capital Territory  
 Institution: Centre For Australian National Biodiversity Research Collection: Australian National Herbarium Basis Of Record: Preserved Specimen Catalog Number: CANB:CANB 878609.1  
[View record](#)

Species: *Chrysocephalum semipapposum* | Clustered Everlasting Date: 2014-11-26 State: Australian Capital Territory  
 Institution: Centre For Australian National Biodiversity Research Collection: Australian National Herbarium Basis Of Record: Preserved Specimen Catalog Number: CANB:CANB 878614.1  
[View record](#)

Species: *Oxalis latifolia* | Fishtail Oxalis Date: 2014-12-12 State: Australian Capital Territory  
 Institution: Centre For Australian National Biodiversity Research Collection: Australian National Herbarium Basis Of Record: Preserved Specimen Catalog Number: CANB:CANB 878637.1  
[View record](#)

Species: *Cynosurus echinatus* | Rough Dog's Tail Date: 2014-12-28 State: Australian Capital Territory  
 Institution: Centre For Australian National Biodiversity Research Collection: Australian National Herbarium Basis Of Record: Preserved Specimen Catalog Number: CANB:CANB 878655.1  
[View record](#)

Species: *Vittadinia muelleri* | Narrow Leaf New Holland Daisy Date: 2014-12-28 State: Australian Capital Territory  
 Institution: Centre For Australian National Biodiversity Research Collection: Australian National Herbarium Basis Of Record: Preserved Specimen Catalog Number: CANB:CANB 878656.1  
[View record](#)

Species: *Vittadinia gracilis* | Woolly New Holland Daisy Date: 2014-12-28 State: Australian Capital Territory



## Occurrence records

Quick search

Customise filters

674,263 results for [all records] - within 5.0 km of point(-35.27145,149.11092)

Selected filters: Spatial filter: CIRCLE

## Narrow your results

## Taxonomic

## Geospatial

## Uncertainty (in metres)

- less than 100 (479,855)
- between 100 and 500 (48,722)
- between 500 and 1000 (26,414)
- between 1000 and 5000 (4,833)

choose more...

## Sensitive

- Generalised (14)

choose more...

## State conservation

- Endangered (2,442)

choose more...

## Location ID

- 1 (61)
- 10 (538)
- 100 (615)
- 105 (3,817)

choose more...

## Local Gov. Area

- Unincorporated ACT (670,853)

choose more...

## State/Territory

- Australian Capital Territory (674,260)

choose more...

## Country

- Australia (674,260)

choose more...

## IBRA

- South Eastern Highlands (674,231)

choose more...

## IMCRA

- n/a (24,791)

choose more...

## Dynamic land cover

- Primarily Vegetated Natural & Semi-Natural Terrestrial Vegetation Woody Trees Open (402,522)

Records Map Charts Record images

Downloads

Alerts

per page: 20 sort: Date added order: Descending

Species: *Juncus planifolius* | Broad Leaved Rush Date: 2011-02-01 State: Australian Capital Territory  
 Institution: Centre For Australian National Biodiversity Research Collection: Australian National Herbarium Basis Of Record: Preserved Specimen Catalog Number: CANB:CANB 873558.1  
[View record](#)

Species: *Isolepis sepulcralis* Date: 2011-02-01 State: Australian Capital Territory  
 Institution: Centre For Australian National Biodiversity Research Collection: Australian National Herbarium Basis Of Record: Preserved Specimen Catalog Number: CANB:CANB 873559.1  
[View record](#)

Species: *Eragrostis brownii* | Brown love grass Date: 2011-02-01 State: Australian Capital Territory  
 Institution: Centre For Australian National Biodiversity Research Collection: Australian National Herbarium Basis Of Record: Preserved Specimen Catalog Number: CANB:CANB 873560.1  
[View record](#)

Species: *Cyperus sanguinolentus* | Flat-sedge Date: 2011-02-01 State: Australian Capital Territory  
 Institution: Centre For Australian National Biodiversity Research Collection: Australian National Herbarium Basis Of Record: Preserved Specimen Catalog Number: CANB:CANB 873561.1  
[View record](#)

Species: *Leptospermum continentale* | Prickly Teatree Date: 2014-11-21 State: Australian Capital Territory  
 Institution: Centre For Australian National Biodiversity Research Collection: Australian National Herbarium Basis Of Record: Preserved Specimen Catalog Number: CANB:CANB 878594.1  
[View record](#)

Species: *Leptospermum brevipes* | Slender Tea Tree Date: 2014-11-21 State: Australian Capital Territory  
 Institution: Centre For Australian National Biodiversity Research Collection: Australian National Herbarium Basis Of Record: Preserved Specimen Catalog Number: CANB:CANB 878595.1  
[View record](#)

Species: *Festuca arundinacea* | Giant Fescue Date: 2014-11-26 State: Australian Capital Territory  
 Institution: Centre For Australian National Biodiversity Research Collection: Australian National Herbarium Basis Of Record: Preserved Specimen Catalog Number: CANB:CANB 878600.1  
[View record](#)

Species: *Haloragis heterophylla* | Variable raspwort" Date: 2014-11-26 State: Australian Capital Territory  
 Institution: Centre For Australian National Biodiversity Research Collection: Australian National Herbarium Basis Of Record: Preserved Specimen Catalog Number: CANB:CANB 878609.1  
[View record](#)

Species: *Chrysocephalum semipapposum* | Clustered Everlasting Date: 2014-11-26 State: Australian Capital Territory  
 Institution: Centre For Australian National Biodiversity Research Collection: Australian National Herbarium Basis Of Record: Preserved Specimen Catalog Number: CANB:CANB 878614.1  
[View record](#)

Species: *Oxalis latifolia* | Fishtail Oxalis Date: 2014-12-12 State: Australian Capital Territory  
 Institution: Centre For Australian National Biodiversity Research Collection: Australian National Herbarium Basis Of Record: Preserved Specimen Catalog Number: CANB:CANB 878637.1  
[View record](#)

Species: *Cynosurus echinatus* | Rough Dog's Tail Date: 2014-12-28 State: Australian Capital Territory  
 Institution: Centre For Australian National Biodiversity Research Collection: Australian National Herbarium Basis Of Record: Preserved Specimen Catalog Number: CANB:CANB 878655.1  
[View record](#)

Species: *Vittadinia muelleri* | Narrow Leaf New Holland Daisy Date: 2014-12-28 State: Australian Capital Territory  
 Institution: Centre For Australian National Biodiversity Research Collection: Australian National Herbarium Basis Of Record: Preserved Specimen Catalog Number: CANB:CANB 878656.1  
[View record](#)

Species: *Vittadinia gracilis* | Woolly New Holland Daisy Date: 2014-12-28 State: Australian Capital Territory

# Occurrence records

Quick search

Customise filters

2,442 results for [all records] - within 5.0 km of point(-35.27145,149.11092)

Selected filters: State conservation: Endangered Spatial filter: CIRCLE

## Narrow your results

Selected filters  
State conservation: Endangered

### Taxonomic

#### Scientific name

- Anthochaera (Xanthomyza) phrygia (25)
- Caladenia actensis (24)
- Climacteris (Climacteris) picumnus picumnus (65)
- choose more...

#### Common name (processed)

- Bindjulang (1)
- Brown Treecreeper (65)
- Button Wrinklewort (98)
- Canberra Spider Orchid (24)
- choose more...

#### Subspecies

- Climacteris (Climacteris) picumnus picumnus (65)
- choose more...

#### Species

- Anthochaera (Xanthomyza) phrygia (25)
- Caladenia actensis (24)
- Climacteris (Climacteris) picumnus (65)
- Daphoenositta (Neositta) chrysoptera (736)
- choose more...

#### Family

- ACCIPITRIDAE (339)
- AGAMIDAE (1)
- Asteraceae (98)
- Brassicaceae (1)
- choose more...

#### Lifeform

- Angiosperms (142)
- Animals (2,300)
- Arthropods (22)
- Birds (2,275)
- choose more...

#### Species habitats

Records Map Charts Record images

Downloads

Alerts

per page: 20 sort: Date added order: Descending

Species: <i>Polytelis swainsonii</i>   Superb Parrot	Date: 2014-11-26	State: Australian Capital Territory	<a href="#">View record</a>
Data Resource: Eremaea EBird	Basis Of Record: Human Observation	Catalog Number: URN:CorneilLabOfOrnithology:EBIRD:OBS282562123	
Species: <i>Polytelis swainsonii</i>   Superb Parrot	Date: 2014-11-30	State: Australian Capital Territory	<a href="#">View record</a>
Data Resource: Eremaea EBird	Basis Of Record: Human Observation	Catalog Number: URN:CorneilLabOfOrnithology:EBIRD:OBS283246453	
Species: <i>Polytelis swainsonii</i>   Superb Parrot	Date: 2013-08-31	State: Australian Capital Territory	<a href="#">View record</a>
Data Resource: Eremaea EBird	Basis Of Record: Human Observation	Catalog Number: URN:CorneilLabOfOrnithology:EBIRD:OBS231225542	
Species: <i>Polytelis swainsonii</i>   Superb Parrot	Date: 2013-08-24	State: Australian Capital Territory	<a href="#">View record</a>
Data Resource: Eremaea EBird	Basis Of Record: Human Observation	Catalog Number: URN:CorneilLabOfOrnithology:EBIRD:OBS231204446	
Species: <i>Polytelis swainsonii</i>   Superb Parrot	Date: 2013-09-08	State: Australian Capital Territory	<a href="#">View record</a>
Data Resource: Eremaea EBird	Basis Of Record: Human Observation	Catalog Number: URN:CorneilLabOfOrnithology:EBIRD:OBS231238733	
Species: <i>Polytelis swainsonii</i>   Superb Parrot	Date: 2013-09-07	State: Australian Capital Territory	<a href="#">View record</a>
Data Resource: Eremaea EBird	Basis Of Record: Human Observation	Catalog Number: URN:CorneilLabOfOrnithology:EBIRD:OBS231243988	
Species: <i>Polytelis swainsonii</i>   Superb Parrot	Date: 2013-09-05	State: Australian Capital Territory	<a href="#">View record</a>
Data Resource: Eremaea EBird	Basis Of Record: Human Observation	Catalog Number: URN:CorneilLabOfOrnithology:EBIRD:OBS231259076	
Species: <i>Polytelis swainsonii</i>   Superb Parrot	Date: 2013-09-05	State: Australian Capital Territory	<a href="#">View record</a>
Data Resource: Eremaea EBird	Basis Of Record: Human Observation	Catalog Number: URN:CorneilLabOfOrnithology:EBIRD:OBS231259466	
Species: <i>Polytelis swainsonii</i>   Superb Parrot	Date: 2013-11-09	State: Australian Capital Territory	<a href="#">View record</a>
Data Resource: Eremaea EBird	Basis Of Record: Human Observation	Catalog Number: URN:CorneilLabOfOrnithology:EBIRD:OBS217022657	
Species: <i>Polytelis swainsonii</i>   Superb Parrot	Date: 2014-01-04	State: Australian Capital Territory	<a href="#">View record</a>
Data Resource: Eremaea EBird	Basis Of Record: Human Observation	Catalog Number: URN:CorneilLabOfOrnithology:EBIRD:OBS224007288	
Species: <i>Polytelis swainsonii</i>   Superb Parrot	Date: 2013-06-28	State: Australian Capital Territory	<a href="#">View record</a>
Data Resource: Eremaea EBird	Basis Of Record: Human Observation	Catalog Number: URN:CorneilLabOfOrnithology:EBIRD:OBS223919683	
Species: <i>Polytelis swainsonii</i>   Superb Parrot	Date: 2013-12-14	State: Australian Capital Territory	<a href="#">View record</a>
Data Resource: Eremaea EBird	Basis Of Record: Human Observation	Catalog Number: URN:CorneilLabOfOrnithology:EBIRD:OBS223919774	
Species: <i>Hieraaetus (Hieraaetus) morphnoides</i>   Little Eagle	Date: 2013-10-06	State: Australian Capital Territory	<a href="#">View record</a>
Data Resource: Eremaea EBird	Basis Of Record: Human Observation	Catalog Number: URN:CorneilLabOfOrnithology:EBIRD:OBS223920719	
Species: <i>Polytelis swainsonii</i>   Superb Parrot	Date: 2013-01-07	State: Australian Capital Territory	<a href="#">View record</a>
Data Resource: Eremaea EBird	Basis Of Record: Human Observation	Catalog Number: URN:CorneilLabOfOrnithology:EBIRD:OBS223926466	
Species: <i>Polytelis swainsonii</i>   Superb Parrot	Date: 2013-09-07	State: Australian Capital Territory	<a href="#">View record</a>
Data Resource: Eremaea EBird	Basis Of Record: Human Observation	Catalog Number: URN:CorneilLabOfOrnithology:EBIRD:OBS223926510	
Species: <i>Polytelis swainsonii</i>   Superb Parrot	Date: 2013-12-06	State: Australian Capital Territory	<a href="#">View record</a>
Data Resource: Eremaea EBird	Basis Of Record: Human Observation	Catalog Number: URN:CorneilLabOfOrnithology:EBIRD:OBS223928034	
Species: <i>Polytelis swainsonii</i>   Superb Parrot	Date: 2013-12-16	State: Australian Capital Territory	<a href="#">View record</a>
Data Resource: Eremaea EBird	Basis Of Record: Human Observation	Catalog Number: URN:CorneilLabOfOrnithology:EBIRD:OBS221804015	

# Occurrence records

Customise filters

2,442 records

## Narrow your results

Selected filters  
State conservation: Endangered

### Taxonomic

- Scientific name
- Anthochaera (Xanthomyza) phrygia (25)
- Calanthe actensis (24)
- Climacis (Climacis) plumbeus plumbeus (65)

### Common name (processed)

- Bindjulang (1)
- Brown Treecreeper (65)
- Button Wrinklewort (98)
- Canberra Spider Orchid (24)

### Subspecies

- Climacis (Climacis) plumbeus plumbeus (65)

### Species

- Anthochaera (Xanthomyza) phrygia (25)
- Calanthe actensis (24)
- Climacis (Climacis) plumbeus (65)
- Daphnopsis (Daphnopsis) phryganea (736)

### Family

- ACCIPITRIDAE (339)
- AGAMIDAE (1)
- Asteraceae (96)
- Brassicaceae (1)

### Lifeform

- Angiosperms (142)
- Animals (2300)
- Arthropods (22)
- Birds (2276)

### Species habitats

- ...

Selected filters

Records

Download

Species

Data Resource

Species

Data Resource

Species

Data Resource

Species

Data Resource

Species

Data Resource

Species

Data Resource

Species

Data Resource

Species

Data Resource

Species

Data Resource

Species

Data Resource

Species

Data Resource

Species

Data Resource

## Refine your search

Common name (processed)	Count
<input type="checkbox"/> Bindjulang	1
<input type="checkbox"/> Brown Treecreeper	65
<input type="checkbox"/> Button Wrinklewort	98
<input type="checkbox"/> Canberra Spider Orchid	24
<input type="checkbox"/> Ginniderra Pepperpress	1
<input type="checkbox"/> Golden Sun Moth	22
<input type="checkbox"/> Grassland Earless Dragon	1
<input type="checkbox"/> Hooded Robin	39
<input type="checkbox"/> Little Eagle	339
<input type="checkbox"/> Mountain Swainson-pea	13
<input type="checkbox"/> Painted Honeyeater	13
<input type="checkbox"/> Regent Honeyeater	25
<input type="checkbox"/> Striped Legless Lizard	1
<input type="checkbox"/> Superb Parrot	659

INCLUDE selected items

EXCLUDE selected items



Close

Species	Date	State	View record
<i>Polytelis swainsonii</i>   Superb Parrot	2013-09-05	Australian Capital Territory	<a href="#">View record</a>
<i>Polytelis swainsonii</i>   Superb Parrot	2013-11-09	Australian Capital Territory	<a href="#">View record</a>
<i>Polytelis swainsonii</i>   Superb Parrot	2014-01-04	Australian Capital Territory	<a href="#">View record</a>
<i>Polytelis swainsonii</i>   Superb Parrot	2013-06-28	Australian Capital Territory	<a href="#">View record</a>
<i>Polytelis swainsonii</i>   Superb Parrot	2013-12-14	Australian Capital Territory	<a href="#">View record</a>
<i>Hieraaetus (Hieraaetus) morphnoides</i>   Little Eagle	2013-10-06	Australian Capital Territory	<a href="#">View record</a>
<i>Polytelis swainsonii</i>   Superb Parrot	2013-01-07	Australian Capital Territory	<a href="#">View record</a>
<i>Polytelis swainsonii</i>   Superb Parrot	2013-09-07	Australian Capital Territory	<a href="#">View record</a>
<i>Polytelis swainsonii</i>   Superb Parrot	2013-12-06	Australian Capital Territory	<a href="#">View record</a>
<i>Polytelis swainsonii</i>   Superb Parrot	2013-12-16	Australian Capital Territory	<a href="#">View record</a>

per page: 10 | sort: Date added | order: Descending



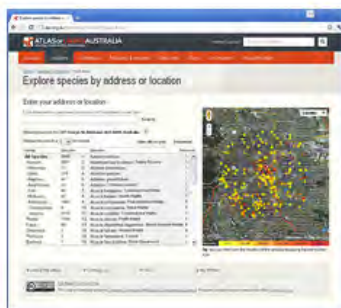
## Species by location

### Explore by pre-defined region



Pre-defined regions include states and territories, local government areas, biogeographic regions, marine regions, management regions and more. [Explore regions](#)

### Explore by address or location



Simply enter an address or location to find the recorded species nearby. You can set the size of the search area and download the results. [Explore your area](#)

Sharing biodiversity knowledge

Contributed by Australia's academic, scientific, environmental communities and you.

[Get involved](#)

### Blog & News Updates [View all](#)

- The Atlas welcomes two new university herbaria data providers.
- ALA Educational Resources for primary school classes.
- COMING SOON: New Phylogenetic 'Tree of Life' Tools

### Connect with us





Home : [Locations](#) : Regions

# Select a region to explore

Select the type of region on the left. Click a name or click on the map to select a region. Use map controls or shift-drag with your mouse to zoom the map. Click the region link to explore occurrence records, images and documents associated with the region.

Click on a region name to select an area.

N/A

Reset map

- ▼ States and territories
  - Australian Capital Territory
  - New South Wales
  - Northern Territory
  - Queensland
  - South Australia
  - Tasmania
  - Victoria
  - Western Australia
- ▶ Local government
- ▶ Biogeographic regions
- ▶ Marine regions
- ▶ Management regions
- ▶ Indigenous protected areas
- ▶ Indigenous land use agreements
- ▶ Other regions



- All regions
- Selected region

feedback



Home : [Locations](#) : Regions

## Select a region to explore

Select the type of region on the left. Click a name or click on the map to select a region. Use map controls or shift-drag with your mouse to zoom the map. Click the region link to explore occurrence records, images and documents associated with the region.

Click on a region name to select an area.

Click on the map to select an area.

Reset map

- ▶ States and territories
- ▶ Local government
- ▼ **Biogeographic regions**
  - Arnhem Coast
  - Arnhem Plateau
  - Australian Alps
  - Avon Wheatbelt
  - Ben Lomond
  - Brigalow Belt North
  - Brigalow Belt South
  - Broken Hill Complex
  - Burt Plain
  - Cape York Peninsula
- ▶ Marine regions
- ▶ Management regions
- ▶ Indigenous protected areas
- ▶ Indigenous land use agreements
- ▶ Other regions



- All regions
- Selected region

Home : [Locations](#) : Regions

# Select a region to explore

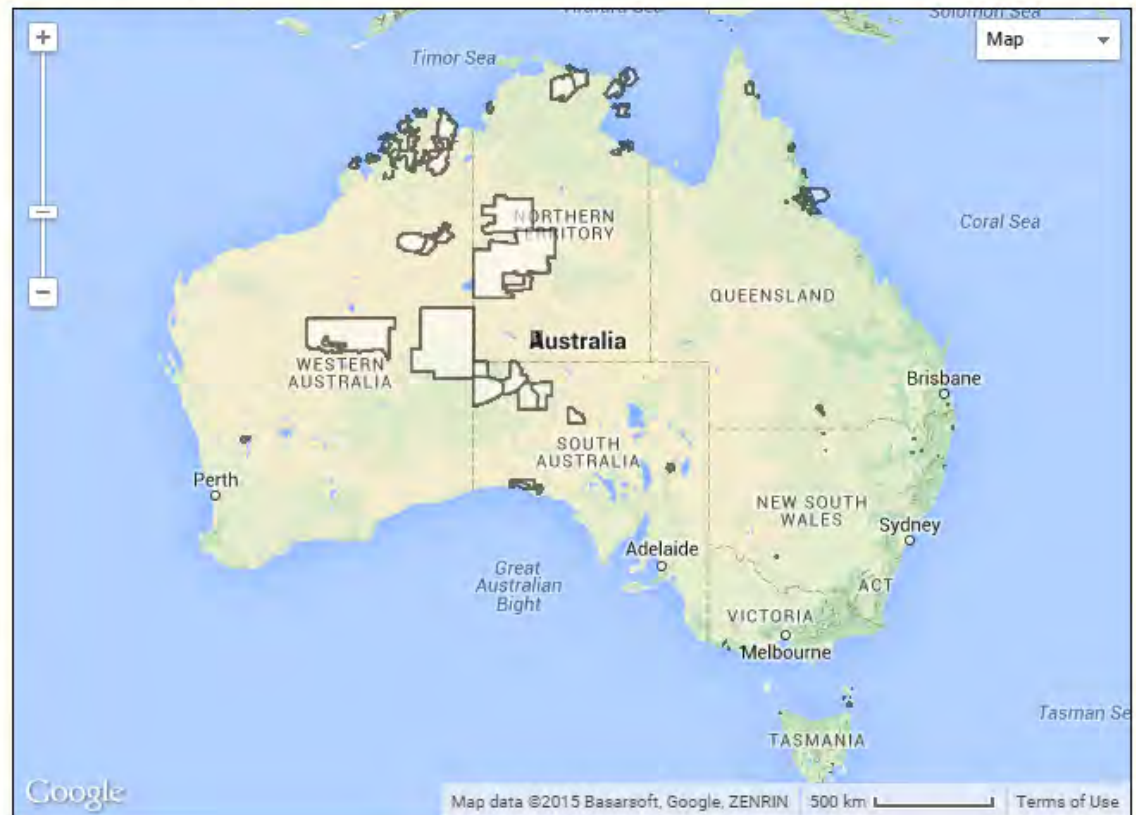
Select the type of region on the left. Click a name or click on the map to select a region. Use map controls or shift-drag with your mouse to zoom the map. Click the region link to explore occurrence records, images and documents associated with the region.

Click on a region name to select an area.

Click on the map to select an area.

Reset map

- ▶ States and territories
- ▶ Local government
- ▶ Biogeographic regions
- ▶ Marine regions
- ▶ Management regions
- ▼ Indigenous protected areas
  - Angas Downs
  - Angkum - Stage 1
  - Anindilyakwa
  - Antara - Sandy Bore
  - Apara - Makiri - Punti
  - Babel Island
  - Badger Island
  - Balangarra
  - Bardi Jawi
  - Birriliburu
- ▶ Indigenous land use agreements
- ▶ Other regions



All regions

Selected region

feedback

Home : [Locations](#) : Regions

## Select a region to explore

Select the type of region on the left. Click a name or click on the map to select a region. Use map controls or shift-drag with your mouse to zoom the map. Click the region link to explore occurrence records, images and documents associated with the region.

Click on a region name to select an area.

**Northeast Shelf Province**

Zoom to region

Reset map

- ▶ States and territories
- ▶ Local government
- ▶ Biogeographic regions
- ▼ **Marine regions**
  - Bass Strait Shelf Province
  - Cape Province
  - Central Eastern Province
  - Central Eastern Shelf Province
  - Central Eastern Shelf Transition
  - Central Eastern Transition
  - Central Western Province
  - Central Western Shelf Province
  - Central Western Shelf Transition
  - Central Western Transition
- ▶ Management regions
- ▶ Indigenous protected areas
- ▶ Indigenous land use agreements
- ▶ Other regions



All regions

Selected region

feedback





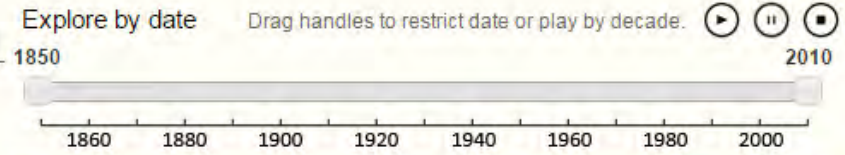
Home : Locations : Regions : Northeast Shelf Province

# Northeast Shelf Province

Occurrence records (472,272)

Explore by species		Explore by taxonomy		Reset all
Species	Records	Group	Species	
1. <i>Ochlerotatus</i> ( <i>Finlaya</i> ) <i>candidoscutellum</i>	8	All Species	14890	
2. <i>ASELLOTA</i>	29	Animals	16766	
3. <i>Aaptos aaptos</i>	20	Mammals	92	
4. <i>Abalistes stellatus</i> : Starry Triggerfish	510	Birds	661	
5. <i>Abaxianthus convexus</i>	2	Reptiles	156	
6. <i>Abelmoschus ficulneus</i> : Native Rosella	3	Amphibians	36	
7. <i>Abelmoschus manihot subsp. tetraphyllus</i>	1	Fish	2058	
8. <i>Abelmoschus moschatus subsp. tuberosus</i> : Native Rosella	6	Molluscs	3014	
9. <i>Abildgaardia ovata</i>	13	Arthropods	2186	
10. <i>Abildgaardia vaginata</i>	16	Crustaceans	1109	
11. <i>Ablennes hians</i> : Barred Longtom	9	Insects	851	
12. <i>Aborolobatea insidiosa</i>	9	Plants	3531	
13. <i>Abra</i> ( <i>Syndosmya</i> ) <i>truncata</i>	2	Bryophytes	23	
14. <i>Abrieta</i>	1	Gymnosperms	13	
15. <i>Abrodictyum brassii</i>	2	FernsAndAllies	174	
16. <i>Abrodictyum obscurum</i>	1	Angiosperms	3220	
17. <i>Abroma molle</i>	11	Monocots	834	
18. <i>Abrophyllum ornans</i> var. <i>ornans</i>	1	Dicots	2386	
19. <i>Abrus precatorius subsp. precatorius</i> : Crabs Eye	13	Fungi	140	
		Chromista	95	
		Protozoa	4	
		Bacteria	48	
		Algae	141	

[View all records](#)      [Download all](#)



feedback



Search for Australian flora and fauna species by common, scientific name or search by category.

Browse species



Search by pre-defined region, or enter an address or location to find the recorded species nearby.

Browse locations



Learn about the institution, the collections they hold and view records of specimens that have been databased.

Browse collections

Australia's academic, scientific, environmental communities and you.

Get involved

### Mapping & analysis

View all



A spatial portal for investigating species occurrences within specified locations and the environmental impacts.

Browse mapping

### Data sets

View all



Refine the list of all the data sets contained within the Atlas by institution, integration status, content, resource, and license.

Browse data sets

### Partner Profiles

View all



View our partner profiles and see how our key contributors help grow the Atlas of Living Australia.

Browse profiles

### Blog & News Updates

View all

The Atlas welcomes two new university herbaria data providers.

ALA Educational Resources for primary school classes.

COMING SOON: New Phylogenetic 'Tree of Life' Tools

Connect with us

Add to Map Tools Import Export Help

Genus: Dacelo  
Map options

Genus: Dacelo

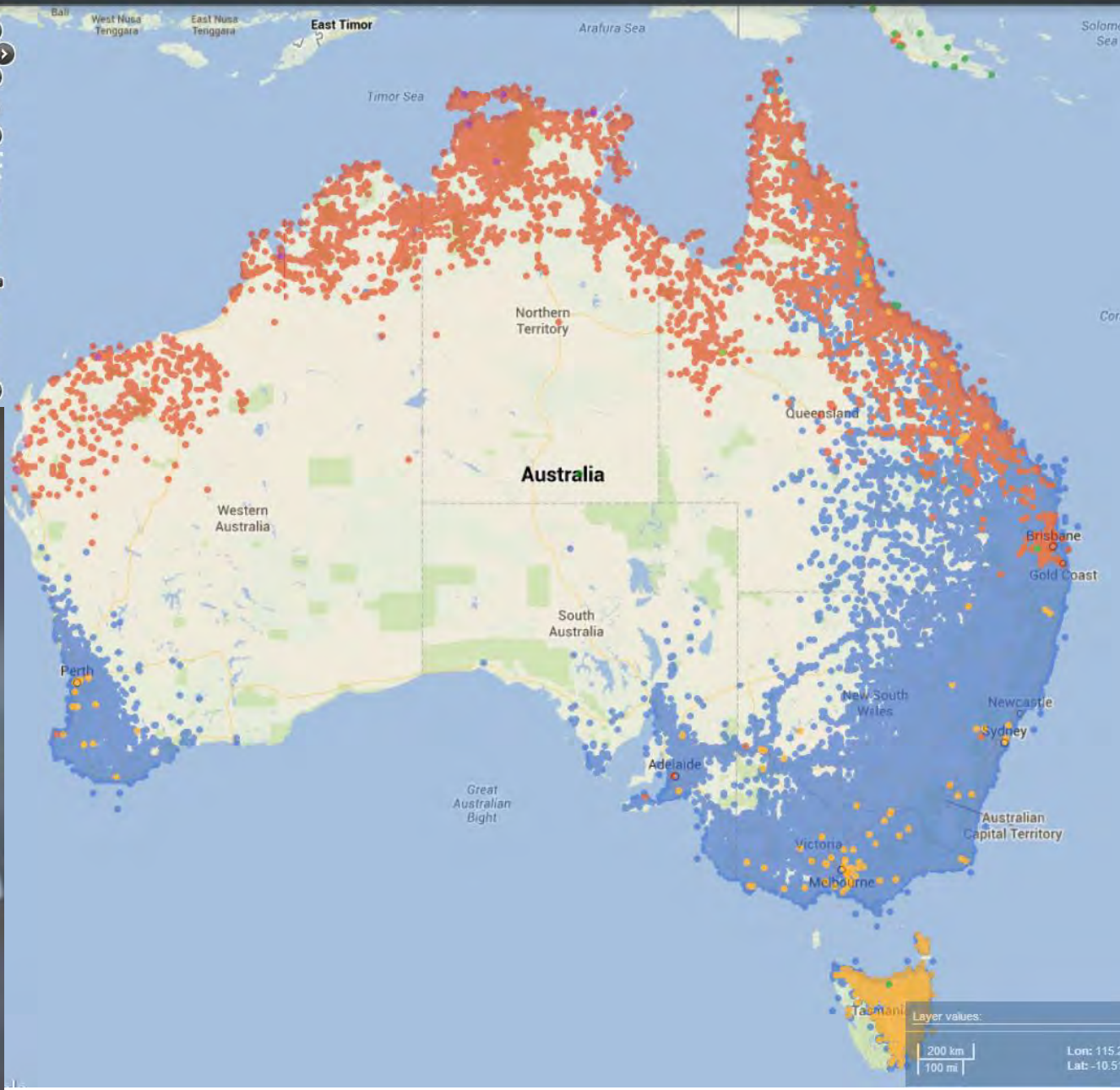
Layer name:

Display as:  Density grid  Points

Facet:

Opacity:

Size:



Add to Map Tools Import Export Help

- Kakadu
- (cl1050:"Kakadu") AND (State conservation:"Endangered")

Map options

(cl1050:"Kakadu") AND (State conservation:"Endangered")

Layer name: (cl1050:"Kakadu") AND (State conservation:"Endangered")

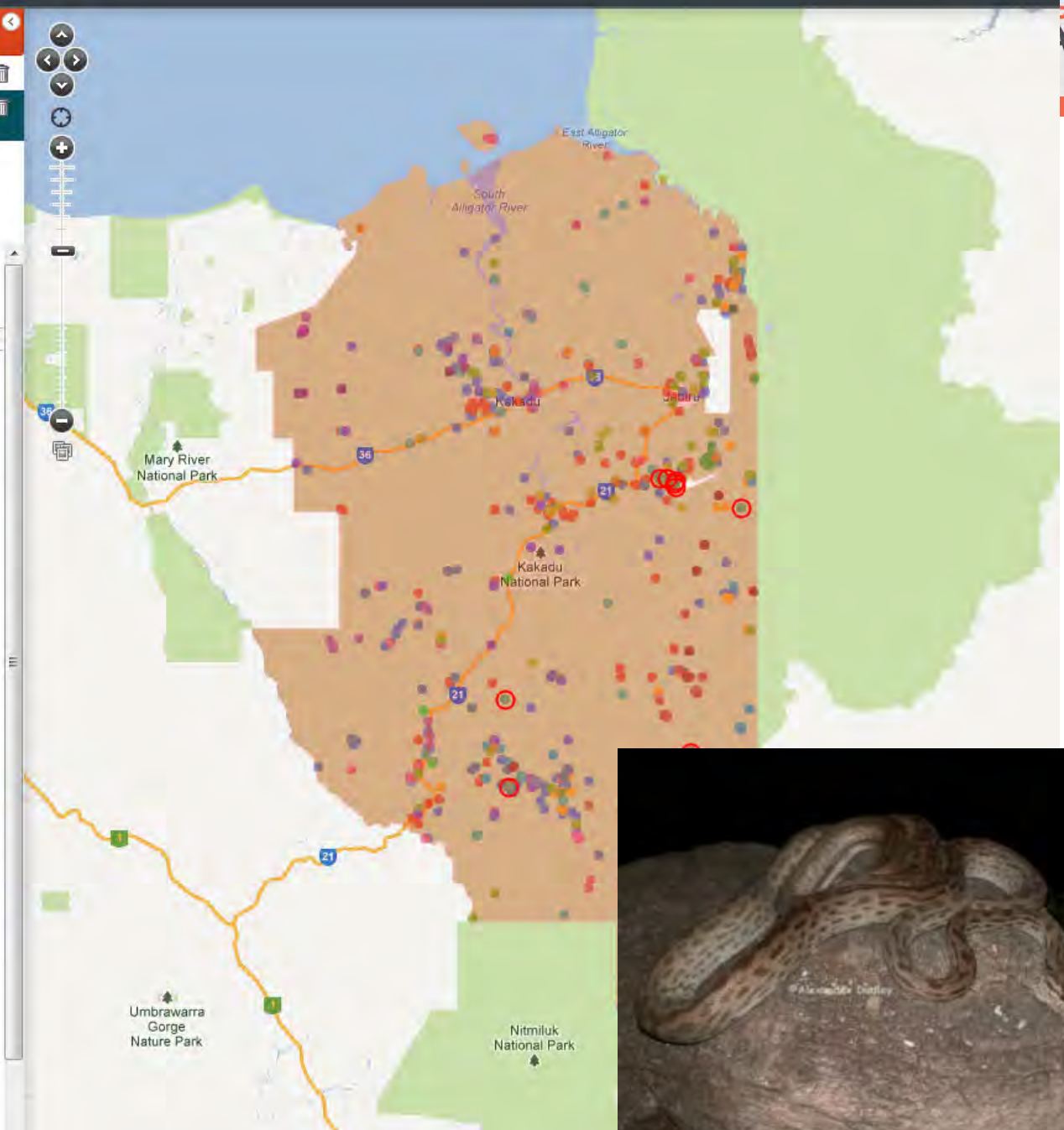
Display as:  Density grid  Points

Facet: Scientific name

Opacity:  60%

Size:  4

class	colour	count
<input type="checkbox"/> <i>Dasyurus hallucatus</i>	Blue	843
<input type="checkbox"/> <i>Geophaps (Geophaps) smithii</i>	Orange	390
<input type="checkbox"/> <i>Zyzomys maini</i>	Yellow	189
<input type="checkbox"/> <i>Hibiscus brennanii</i>	Green	88
<input type="checkbox"/> <i>Monochoria hastata</i>	Purple	81
<input type="checkbox"/> <i>Amytornis (Amytornis) woodwardi</i>	Cyan	64
<input type="checkbox"/> <i>Varanus panoptes</i>	Pink	63
<input type="checkbox"/> <i>Varanus mertensi</i>	Light Green	62
<input type="checkbox"/> <i>Lithomyrtus linariifolia</i>	Red	60
<input type="checkbox"/> <i>Erythrura (Chloeobia) gouldiae</i>	Light Blue	56
<input type="checkbox"/> <i>Ardeotis australis</i>	Purple	48
<input type="checkbox"/> <i>Dromaius novaehollandiae</i>	Light Green	44
<input type="checkbox"/> <i>Coniurus penicillatus</i>	Yellow	35
<input type="checkbox"/> <i>Erythrorichis radiatus</i>	Purple	26
<input type="checkbox"/> <i>Epthianura (Aurepthianura) crocea tunneyi</i>	Orange	19
<input type="checkbox"/> <i>Hipposideros inornata</i>	Dark Red	12
<input type="checkbox"/> <i>Lucasium occultum</i>	Dark Purple	12
<input checked="" type="checkbox"/> <i>Morelia oenpelliensis</i>	Green	10
<input type="checkbox"/> <i>Tyto (Megastrix) novaehollandiae kimberli</i>	Blue	9
<input type="checkbox"/> <i>Acacia</i> sp. Graveside Gorge (V.J. Levitzke 806)	Dark Blue	8
<input type="checkbox"/> <i>Ipomoea polpha</i> subsp. <i>latzii</i>	Brown	7
<input type="checkbox"/> <i>Isodon auratus</i>	Light Green	4
<input type="checkbox"/> <i>Malaxis latifolia</i>	Pink	3
<input type="checkbox"/> <i>Freycinetia excelsa</i>	Pink	2
<input type="checkbox"/> <i>Cycas armstrongii</i>	Brown	1
<input type="checkbox"/> <i>Glyphis glyphis</i>	Light Green	1
<input type="checkbox"/> <i>Mesembriomys macrurus</i>	Blue	1
<input type="checkbox"/> <i>Rattus sordidus</i>	Light Green	1
<input type="checkbox"/> <i>Rostratula australis</i>	Yellow	1
<input type="checkbox"/> <i>Utricularia dunstaniae</i>	Dark Green	1





Species

Areas

Layers

Facet

### Map options

#### Base map

- Outline i
- Minimal i
- Normal i
- Satellite i

Add WMS Layer

Download map

Reset map



# Add Layer

## 1. Select layers

Select one or more layers. The layer sets use layer 'short name': see [layers](#)

Add set a of layers:

Add from search:

category	name	
	diurnal range	
<input type="checkbox"/>	Climate; Temperature	2030A1BMk35M: Temperature - month hottest maximum
<input type="checkbox"/>	Climate; Temperature	2030A1BMk35M: Temperature - warmest month min
<input type="checkbox"/>	Climate; Temperature	Temperature - annual max mean
<input type="checkbox"/>	Climate; Temperature	Temperature - annual mean (Bio01)
<input type="checkbox"/>	Climate; Temperature	Temperature - annual min mean
<input type="checkbox"/>	Climate; Temperature	Temperature - annual range
<input type="checkbox"/>	Climate; Temperature	Temperature - annual range (Bio07)
<input type="checkbox"/>	Climate; Temperature	Temperature - coldest month min
<input type="checkbox"/>	Climate; Temperature	Temperature - coldest period min (Bio06)
<input type="checkbox"/>	Climate; Temperature	Temperature - coldest quarter mean (Bio11)
<input type="checkbox"/>	Climate; Temperature	Temperature - coolest month max
<input type="checkbox"/>	Climate; Temperature	Temperature - diurnal range mean (Bio02)
<input type="checkbox"/>	Climate; Temperature	Temperature - driest quarter mean (Bio09)
<input type="checkbox"/>	Climate; Temperature	Temperature - isothermality (Bio03)
<input type="checkbox"/>	Climate; Temperature	Temperature - max absolute mean max
<input type="checkbox"/>	Climate; Temperature	Temperature - max difference in max
<input type="checkbox"/>	Climate; Temperature	Temperature - max difference in min
<input type="checkbox"/>	Climate; Temperature	Temperature - max month diurnal range
<input type="checkbox"/>	Climate; Temperature	Temperature - mean annual absolute mean min

The colours against the layers are like traffic lights. Green implies the layer is uncorrelated to all selected layers, orange implies some correlation while red implies high correlation. As you select layers, the colours change to reflect correlation with already selected layers. For example a red layer implies high correlation with at least one selected layer while a green layer implies little or no correlation to any selected layer

Note: The correlations are currently based on full layer spatial extents and not any selected sub-area.

Clear selection    Export set    0 layers selected

Cancel    **Next >**

Temperature - annual max mean

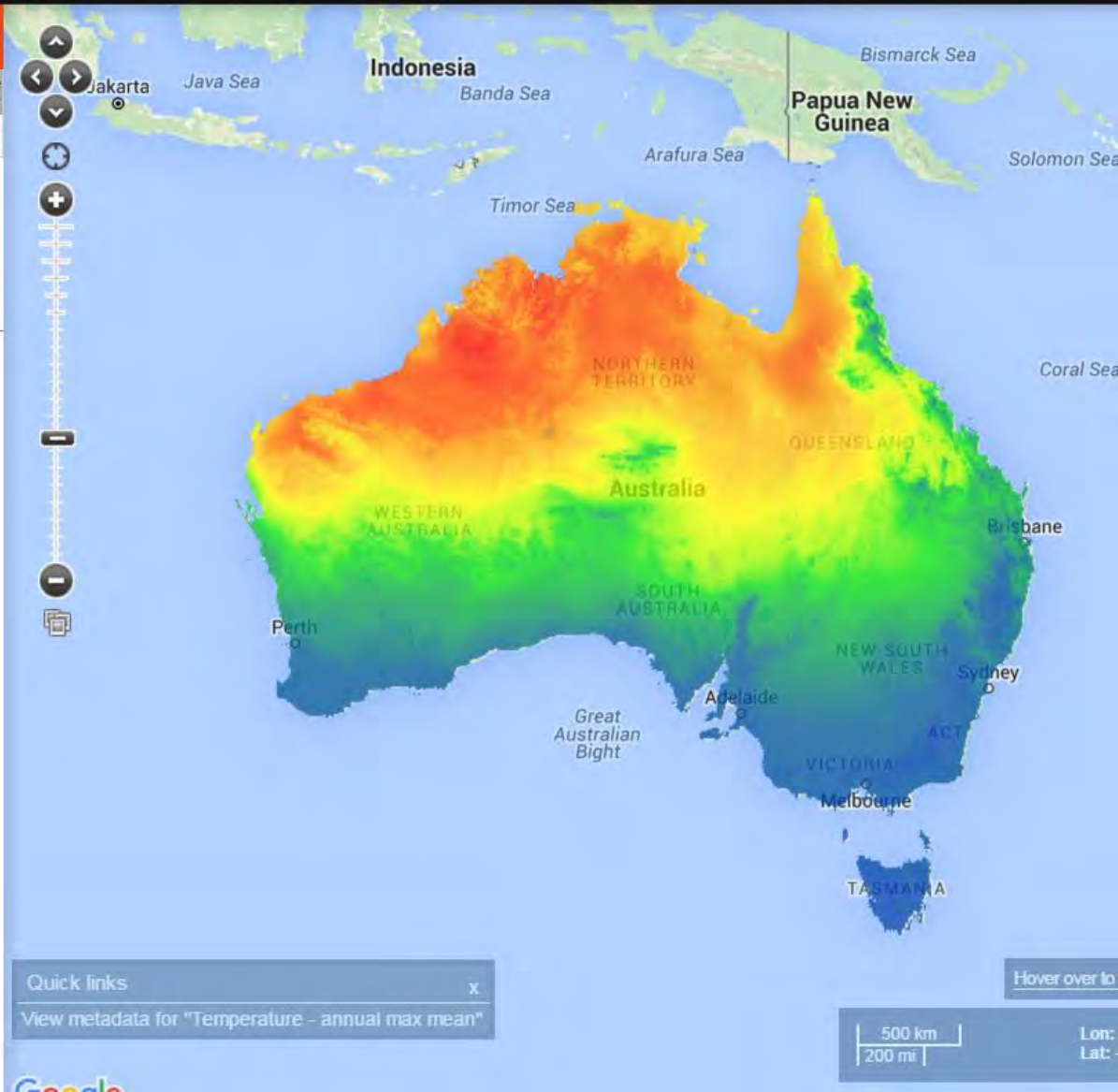
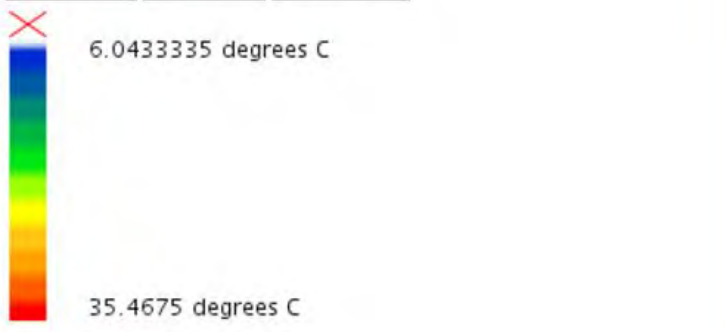
Map options Delete all Show all Hide all

### Temperature - annual max mean

Layer name Temperature - annual max mean Rename

Opacity 75%

show legend hide legend popup legend



Quick links View metadata for "Temperature - annual max mean"

500 km 200 mi

My Prediction

Koala

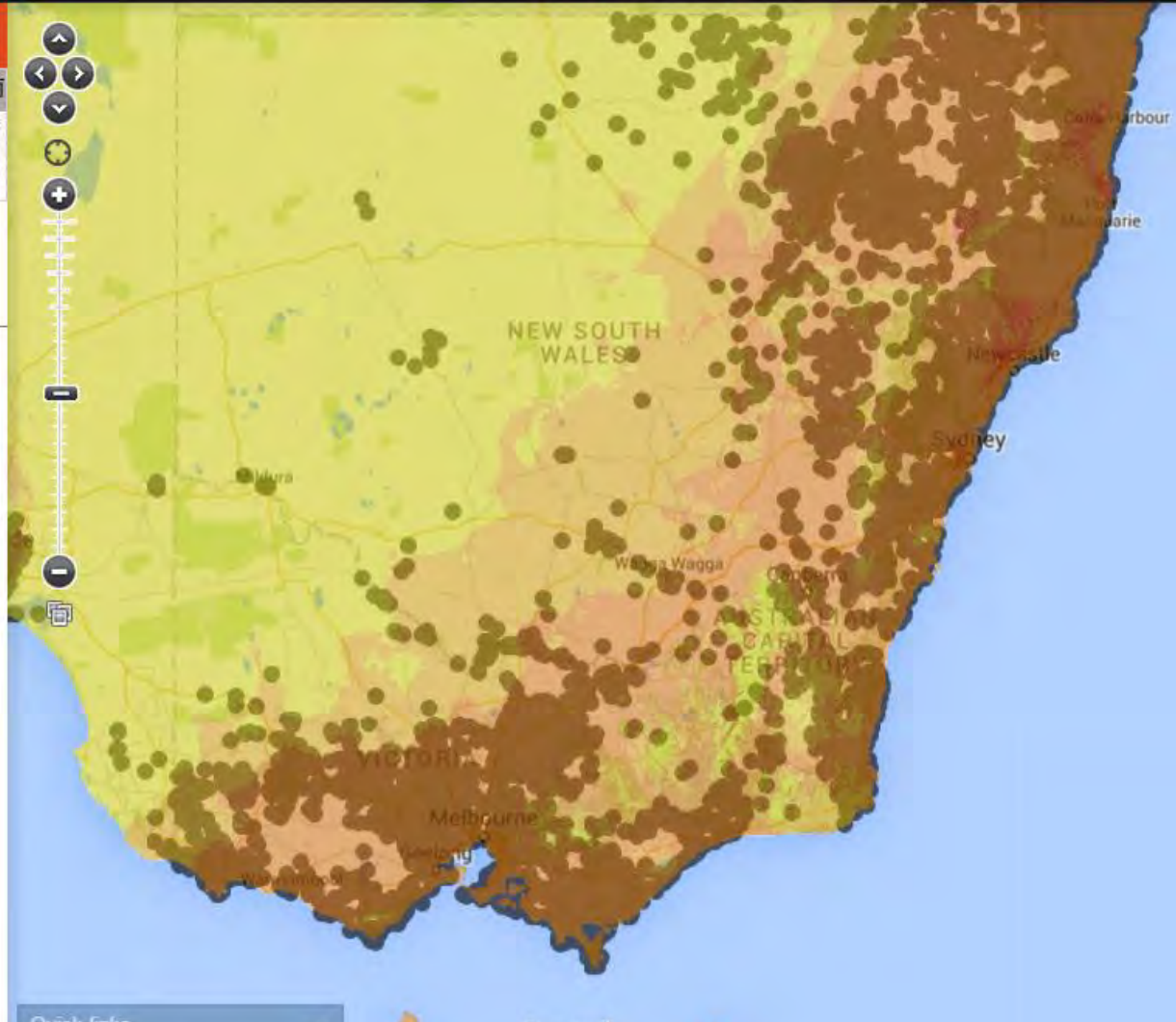
Map options

### My Prediction

Layer name

Opacity  50%

- 9999.0 < x
- 9999.0 <= x < 0.0
- 0.0 <= x < 1.0E-4
- 1.0E-4 <= x < 0.2
- 0.2 <= x < 0.4
- 0.4 <= x < 0.6
- 0.6 <= x < 0.8
- 0.8 <= x < 1.0



Predictive analysis (Maxent) of current koala distribution against predicted 2030 climate layers: parts of the current distribution of koala become quite marginal in years to come.



Add to Map Tools Import Export Help

My Scatterplot  
SPECIES: *Calyptorhynchus (Zanda) latirostris*  
Map options

### My Scatterplot

Species display settings

Download image Download data

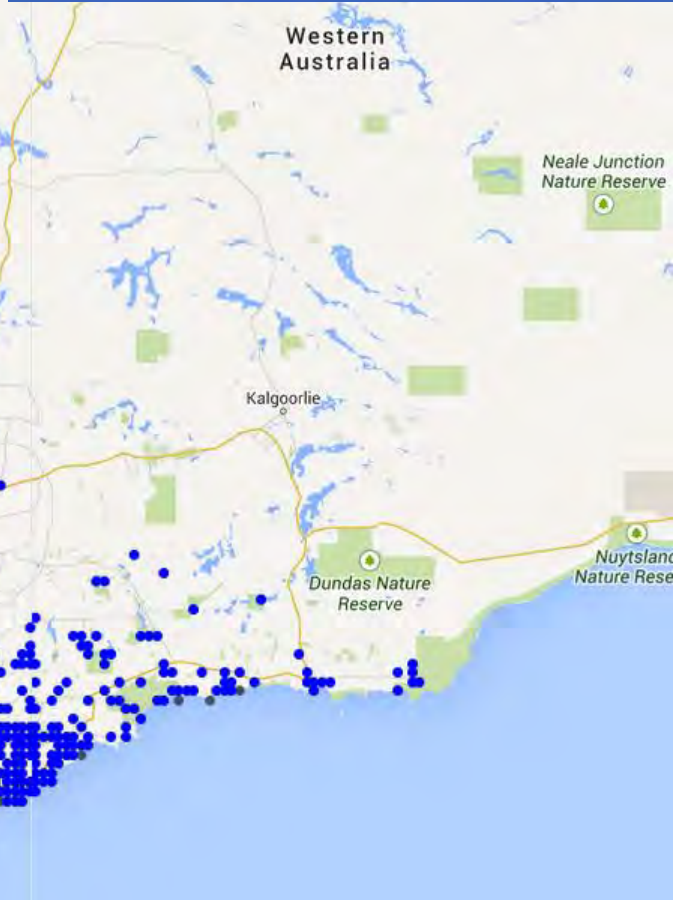
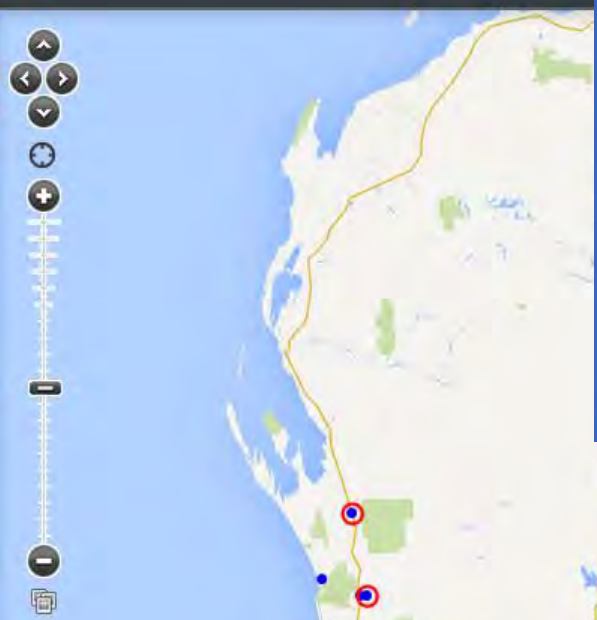
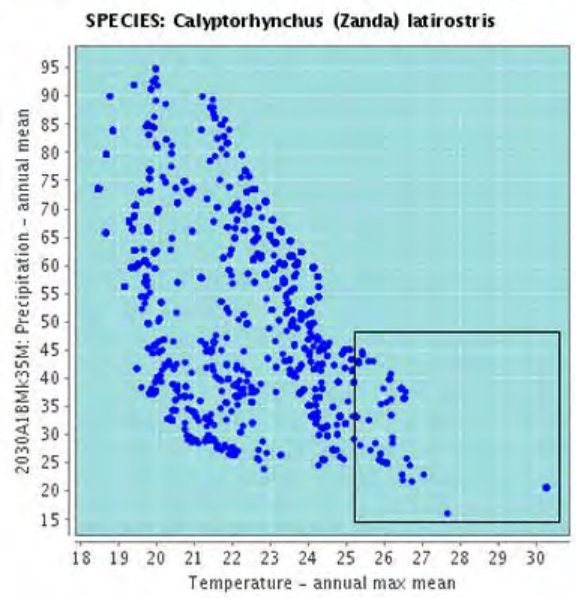
Records selected: 32 add in/out layers to map

Temperature - annual max mean: 25.2025 - 30.6000

2030A1BMk35M: Precipitation - annual mean: 14.5198 - 48.2012

SELECT records with missing values (160)

Highlight occurrences on the scatterplot that are in an area  
 Clear





### Map options

#### Base map

- Outline
- Minimal
- Normal
- Satellite

Add WMS Layer

Download map

Reset map

## Add Area

Select method to define area.

Interact with the map

- Draw bounding box
- Draw polygon
- Draw point and radius
- Select area from polygonal layer

Searching

- Radius centered on street address
- Create radius from point
- Gazetteer polygon

Preset areas

- Box - Australia
- Box - World
- Box - Current View

Import

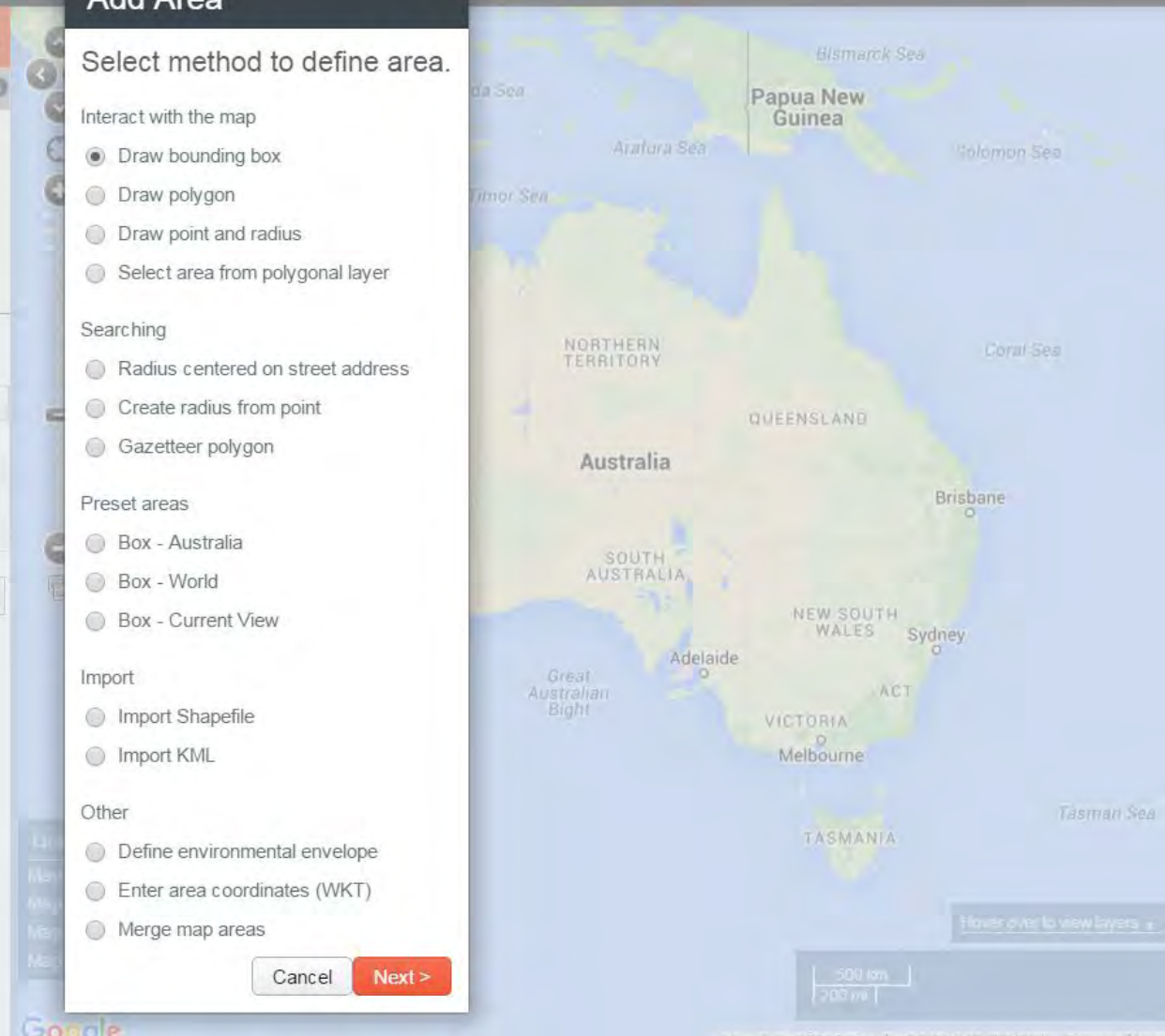
- Import Shapefile
- Import KML

Other

- Define environmental envelope
- Enter area coordinates (WKT)
- Merge map areas

Cancel

Next >



My Area 🔍 🗑️

Map options ⓘ

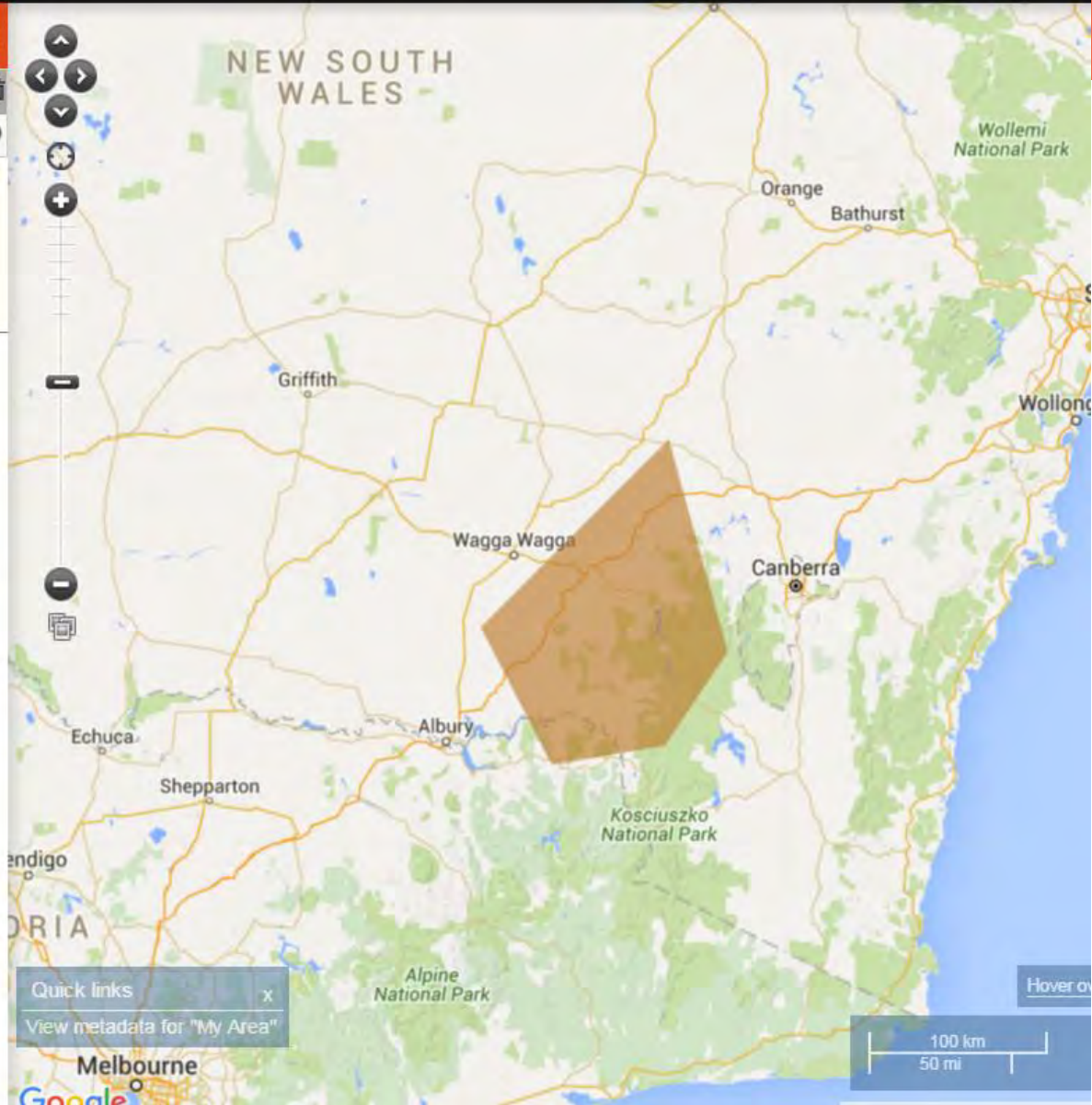
### My Area

Layer name  Rename

Facet

 [more](#) 

Opacity  60%



Quick links ✕

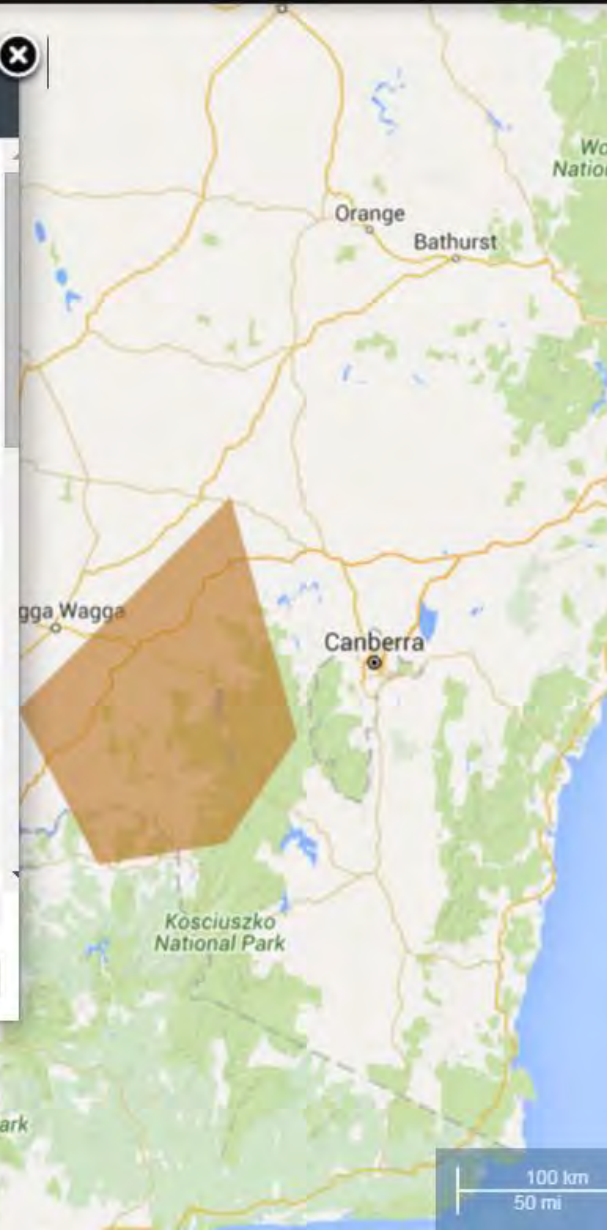
[View metadata for "My Area"](#)

### My Area

Area (sq km)	15,155.98			<a href="#">Info</a>
Number of species	4,943	<a href="#">List</a>		
Number of species - spatially valid only	4,923	<a href="#">List</a>		
Occurrences	229,740		<a href="#">Map all</a>	<a href="#">Sample</a> <a href="#">View Records</a>
Occurrences - spatially valid only	229,656		<a href="#">Map all</a>	<a href="#">Sample</a> <a href="#">View Records</a>
Expert distributions	360	<a href="#">List</a>		
Checklist areas	0			
Checklist species	0			
Journalmap documents	5	<a href="#">List</a>		<a href="#">JournalMap</a>
Gazetteer points	3,518		<a href="#">Map all</a>	
Points of interest	0			
Invasive Species	210	<a href="#">List</a>	<a href="#">Map all</a>	<a href="#">View Records</a>
Threatened Species	1,379	<a href="#">List</a>	<a href="#">Map all</a>	<a href="#">View Records</a>
				<a href="#">Full List</a>
Migratory species - EPBC	20	<a href="#">List</a>	<a href="#">Map all</a>	<a href="#">View Records</a>
				<a href="#">Full List</a>

[Download](#) [Close](#)

Quick links ✕  
[View metadata for "My Area"](#)





Add to Map Tools Import Export Help

Elevation over 1500m

Map options

Delete all

Show all

Hide all

### Elevation over 1500m

Layer name Elevation over 1500m

Rename

Facet

User defined colour

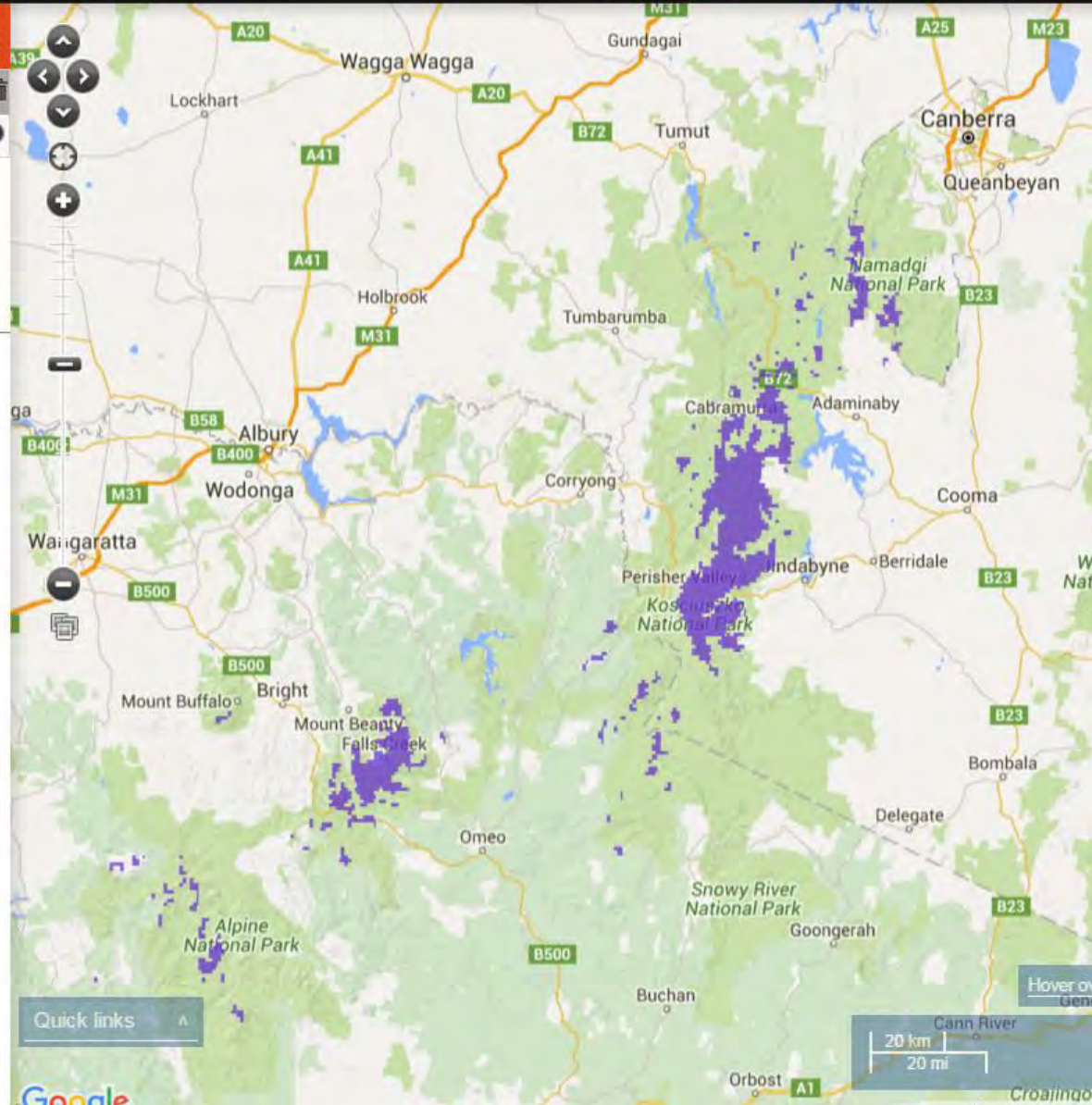


more

Opacity



75%



Quick links





Elevation over 1500m

Map options

### Elevation over 1500m

Layer name: Elevation over 1500m

Facet: User defined categories



Opacity: [slider]

## My Area

Area (sq km)	2,240.43				<a href="#">Info</a>
Number of species	4,786	<a href="#">List</a>			
Number of species - spatially valid only	4,764	<a href="#">List</a>			
Number of endemic species	178	<a href="#">List</a>	<a href="#">Map all</a>		
Number of endemic species - spatially valid only	175	<a href="#">List</a>	<a href="#">Map all</a>		
Occurrences	91,842		<a href="#">Map all</a>	<a href="#">Sample</a>	<a href="#">View Records</a>
Occurrences - spatially valid only	91,681		<a href="#">Map all</a>	<a href="#">Sample</a>	<a href="#">View Records</a>
Expert distributions	2635	<a href="#">List</a>			
Checklist areas	1	<a href="#">List</a>			
Checklist species	88	<a href="#">List</a>			
Journalmap documents	264	<a href="#">List</a>			<a href="#">JournalMap</a>
Gazetteer points	Loading...				
Points of interest	5		<a href="#">Map all</a>		
Invasive Species	193	<a href="#">List</a>	<a href="#">Map all</a>		<a href="#">View Records</a>
Threatened Species	916	<a href="#">List</a>	<a href="#">Map all</a>		<a href="#">View Records</a>

Full List

[Download](#) [Close](#)



- In addition to our “core” capabilities ...

Working on a variety of tools to support taxonomy, collection management, biodiversity analysis and strategic initiatives for the future.

## Phylolink

### Overview

Phylolink is a collection of tools through which biodiversity can be explored from a phylogenetic (or tree of life) perspective.

At the core of these tools is the ability to easily intersect a phylogenetic tree with species occurrence records, environmental data, and species character information.

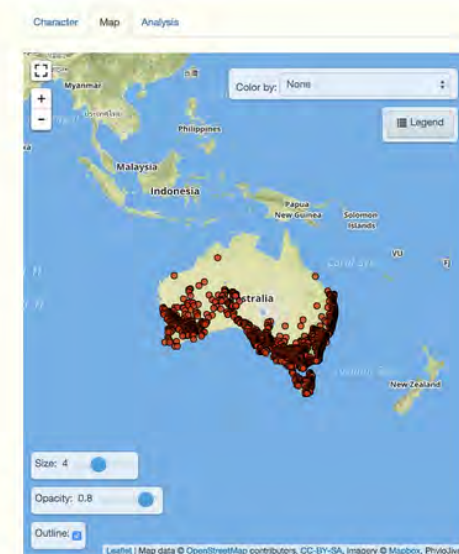
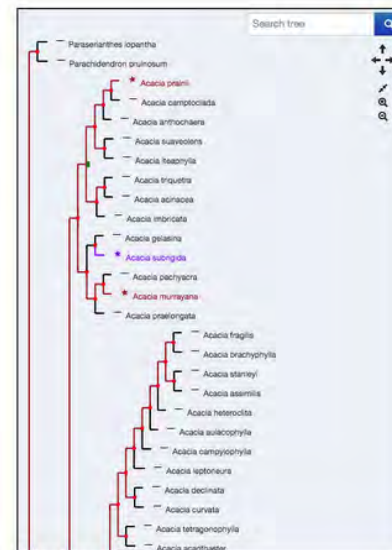
The result is powerful ways of combining data to generate flexible and customisable visualisations, profiles and metrics for biodiversity.

Start Phylolink

Explore Phylogenetic Diversity

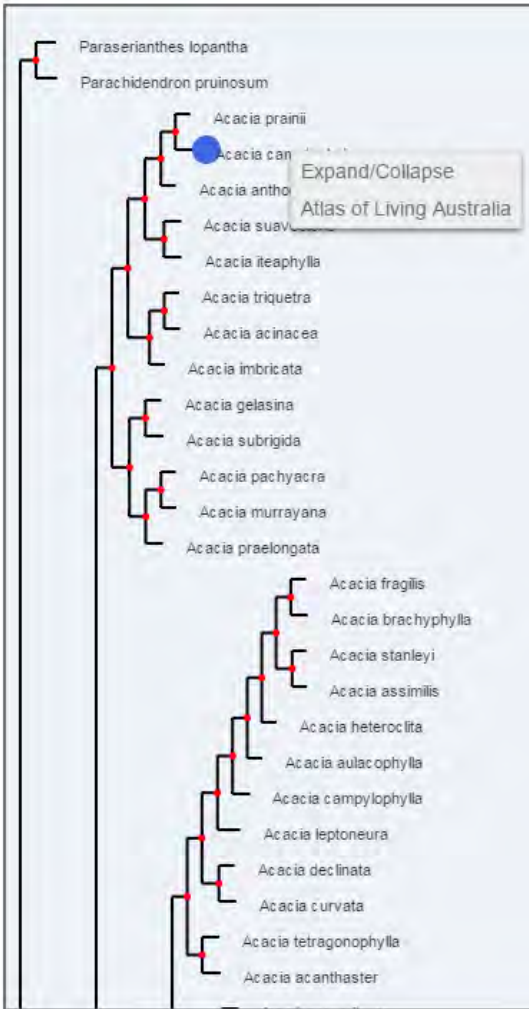
### Collaborators and acknowledgement:

These tools are the result of a collaboration between scientists, the creators of PhyloJIVE and the Atlas of Living Australia. The tools have been developed by Temi Varghese, Rebecca Pirzi, Adam Collins, Nick dos Remedios and Dave Martin, with advice from Joe Miller, Craig Moritz, Dan Rosauer and Garry Jolley-Rogers.





# My viz #339



Home → Australia's species → Acacia camptoclada

## Acacia camptoclada C.R.P.Andrews

[Record a sighting](#) [Alerts](#)

Overview Gallery Names Classification Records Literature Sequences

**Name source**  
Australian Plant Census

**Rank**  
Species

**Data links**  
[LSID](#) [JSON / WMS / RDF](#)

**Species presence**  
 Recorded In Australia  
 Terrestrial Habitats

**Occurrence records map**

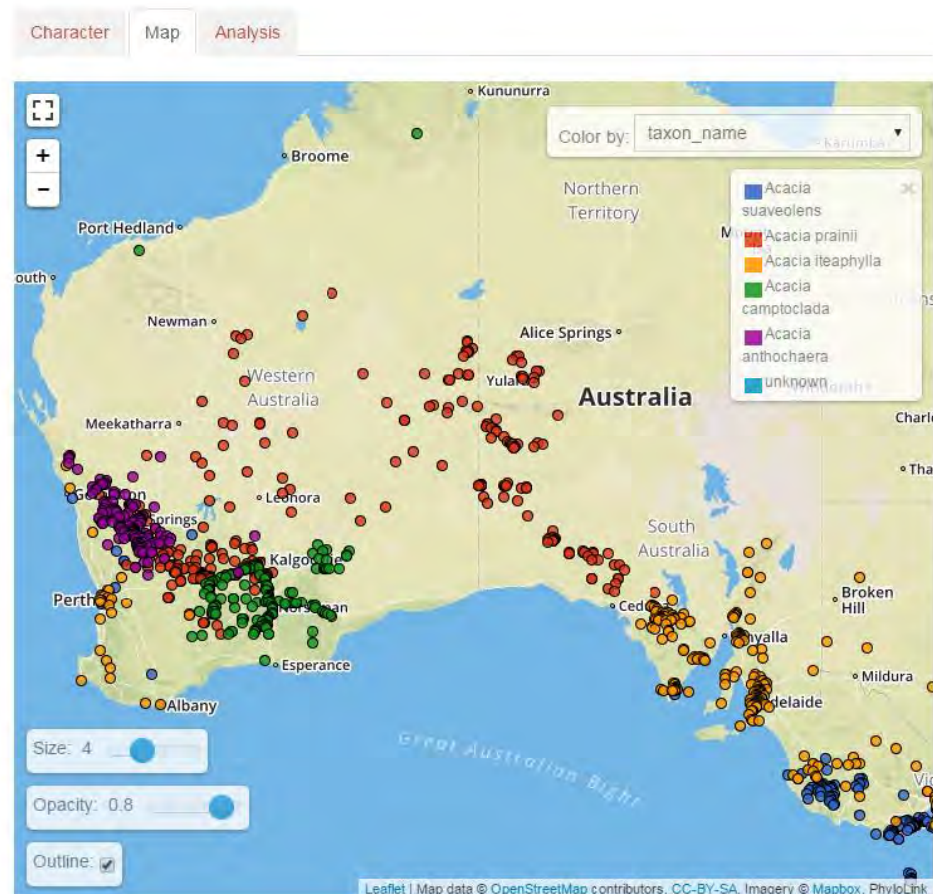
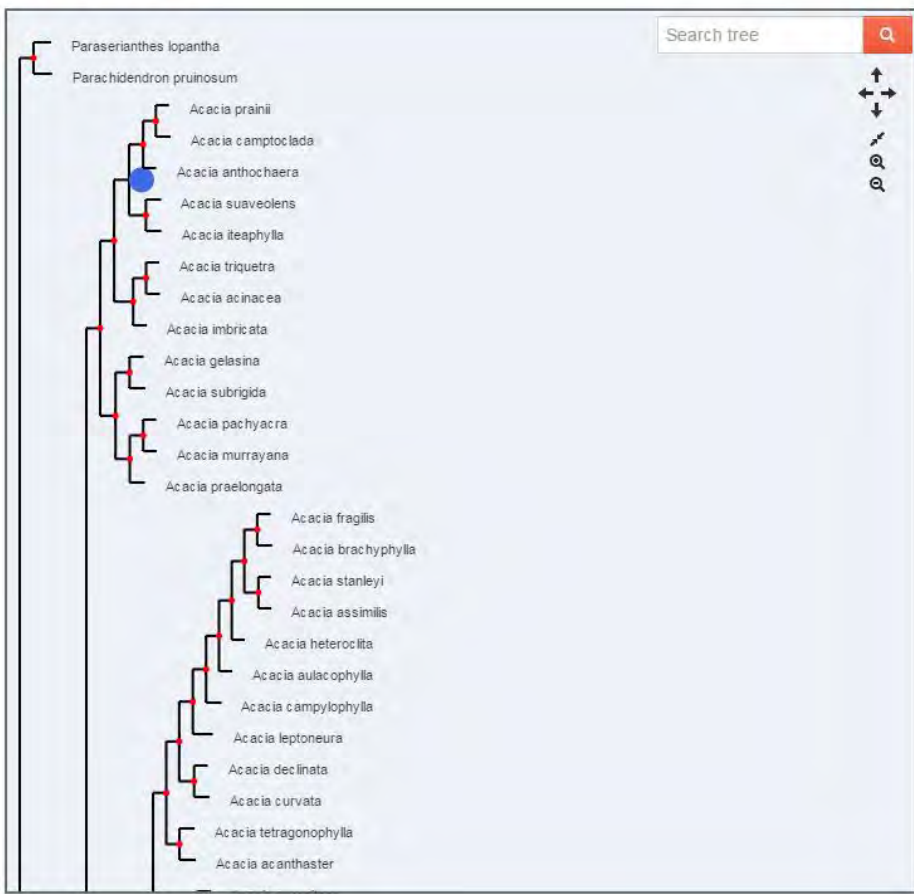
[View records list](#) [Map & analyse records](#)

**Online resources**

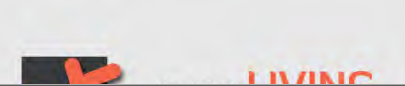
- Australian Plant Image Index**  
Images, Occurrence record
- Flickr EOL**  
Images, Occurrence record
- FloraBase - the Western Australian Flora**  
Reference, Images, Occurrence record, Scientific Description Author, Name Status



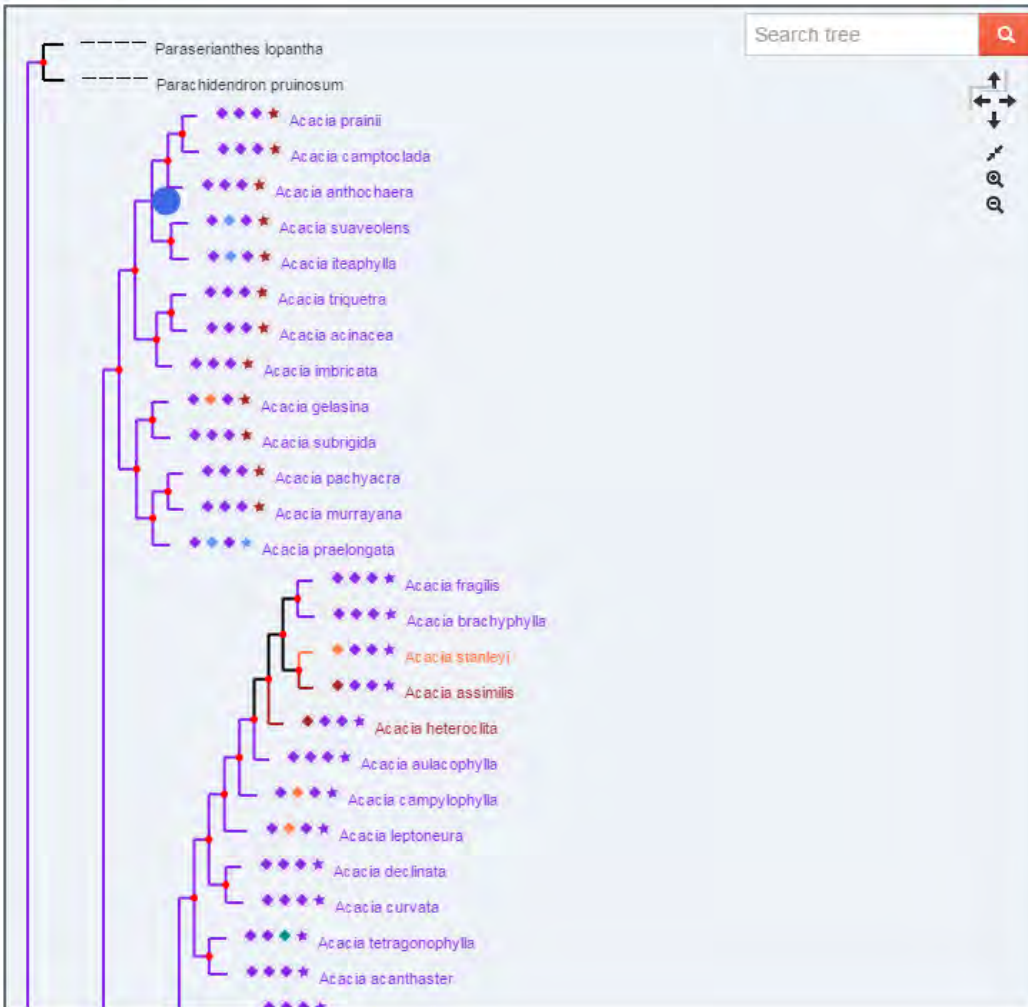
My viz #122



- ALA's new phylogenetic tools integrate phylogenetic trees and spatial mapping so that phylogenies can be represented spatially by, for example species occurrence or character. Here, the occurrence of Acacia species from the clade highlighted by the blue node is mapped and coloured by species.



# My viz #122



Character    Map    Analysis

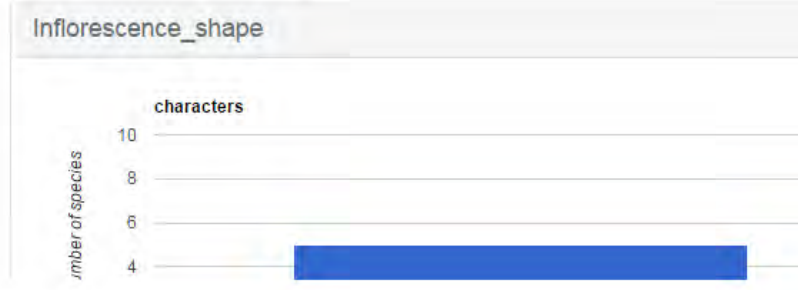
Upload your character data

Or, pick a character dataset from the available list:

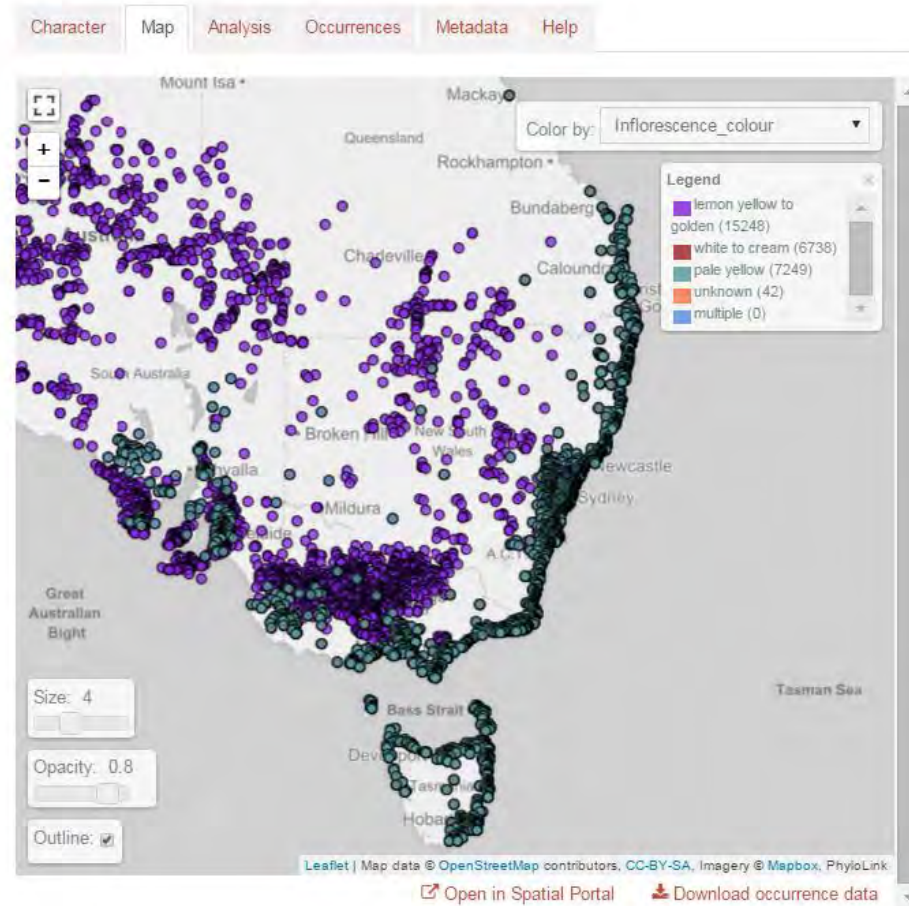
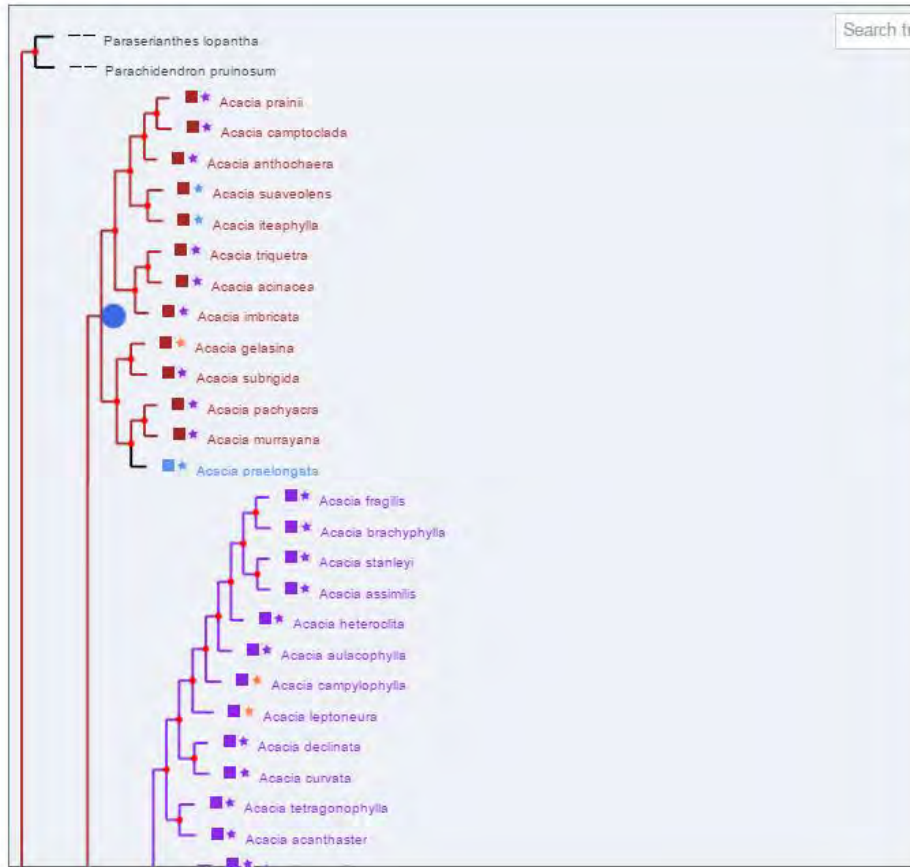
List of characters available:

Add Character to Tree

- ↑ Inflorescence\_shape ✕
- ↑ Inflorescence\_colour ✕
- ↑ Phyllode\_arrangement ✕
- ↑ Inflorescence\_arrangement ✕

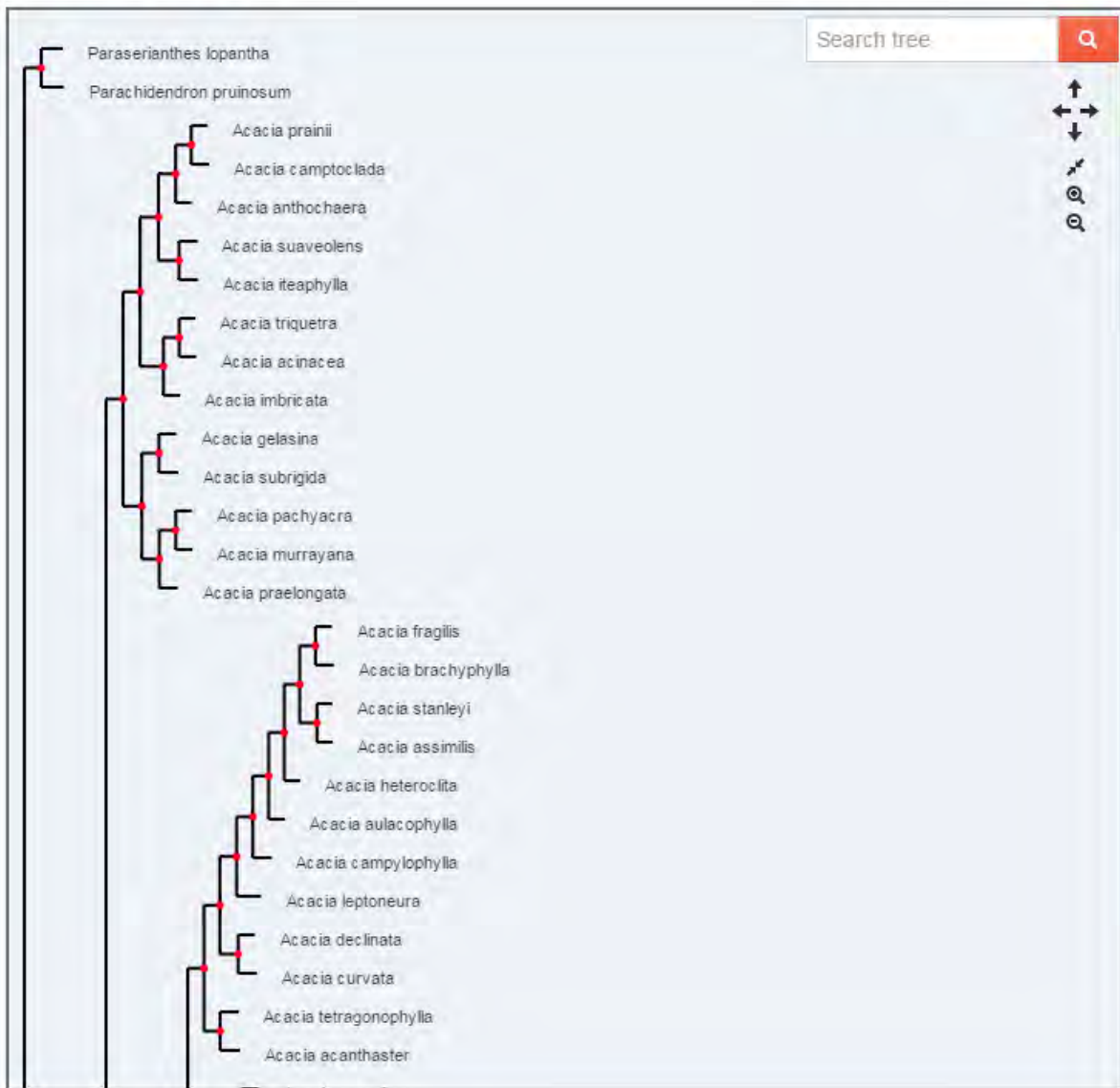


## My viz #221



- ALA's new phylogenetic tools integrate phylogenetic trees and spatial mapping so that phylogenies can be represented spatially by, for example species occurrence or character. Here, the occurrence of Acacia species from the clade highlighted by the blue node is mapped and coloured by inflorescence colour.

# My viz #329



Character   Map   Analysis   Help

Plot profile

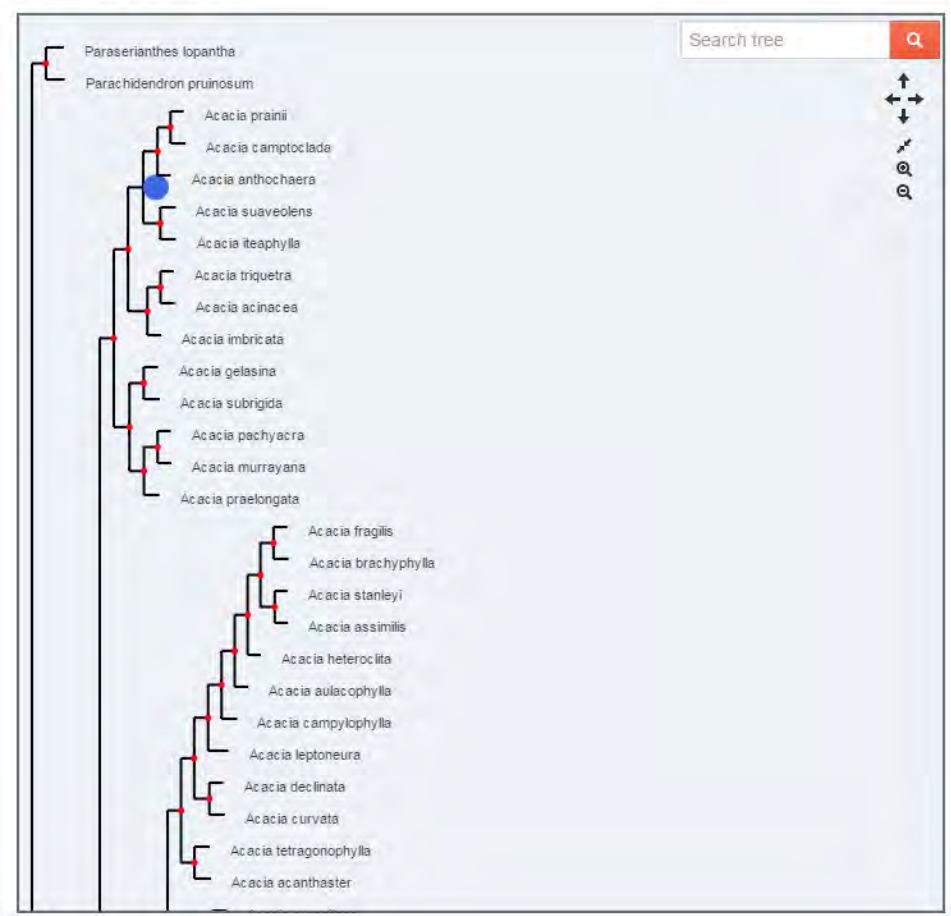
Precipitation - annual (Bio12)

Precipitation - annual (Bio12)


**Note**

You can click on *Plot profile* button to find out the temperature etc. of a clade. You can pick the list by typing into the input box.

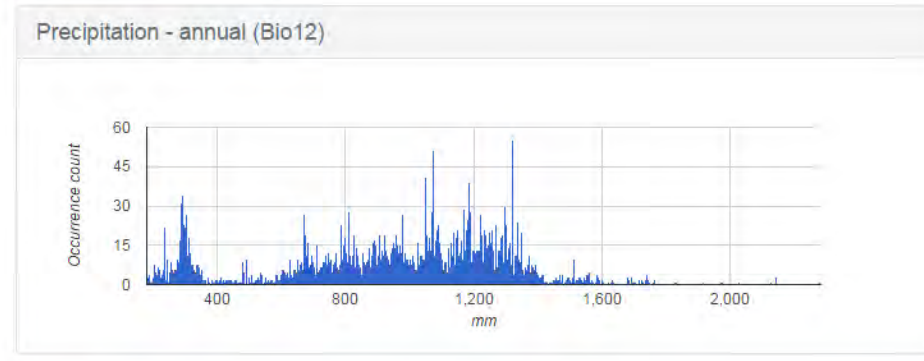
## My viz #329



[Character](#) [Map](#) [Analysis](#) [Help](#)

 [Plot profile](#)

↓ [Precipitation - annual \(Bio12\)](#) ×



**Note** 

You can click on *Plot profile* button to find out the environmental characteristics like precipitation, temperature etc. of a clade. You can pick the environmental parameter from the drop down list, or filter the list by typing into the input box.



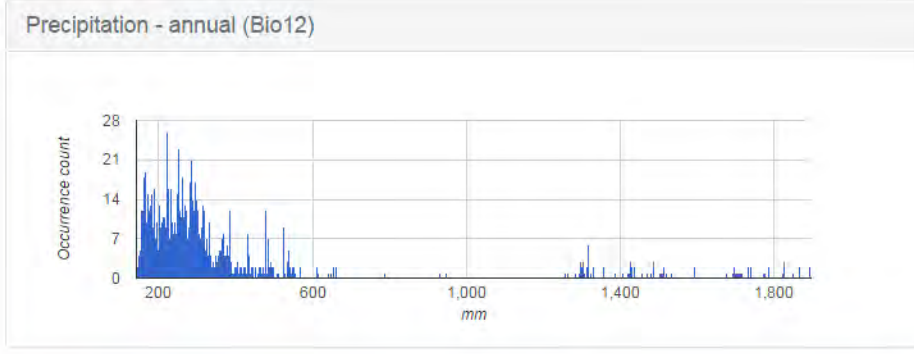
[Home](#) / [Start PhyloLink](#) / [My Visualisations](#)

## My viz #329



[Character](#) [Map](#) [Analysis](#) [Help](#)

↓ Precipitation - annual (Bio12) ×



**Note**

You can click on *Plot profile* button to find out the environmental characteristics like precipitation, temperature etc. of a clade. You can pick the environmental parameter from the drop down list, or filter the list by typing into the input box.

## Profile Collections

### Search for profile(s)

with text Search... Q

Options

### Browse by collection



DEMO 1



DEMO 2



FLORA OF AUSTRALIA



FLORA OF NSW



FLORA OF QUEENSLAND



FLORA OF SOUTH AUSTRALIA



FLORA OF TASMANIA



FLORA OF THE NORTHERN TERRITORY



FLORA OF THE PILBARA



FLORA OF WESTERN AUSTRALIA



MARINE ALGAE OF AUSTRALIA



SAVANNA KEY



[Home](#) / [FABALES](#) / [FABACEAE](#) / [ACACIA](#) / [ACACIA ABBATIANA](#)

## Acacia abbatiana Pedley ALA NSL [legitimate]

Options

— Pedley, L. (1999), Notes on Acacia (Leguminosae: Mimosoideae) chiefly from northern Australia. *Austrobaileya* 5(2): 313

✖ CHAH (2006), *Australian Plant Census*
✔ APC

PROFILE

DISTRIBUTION

GALLERY

LITERATURE &amp; LINKS

### Typification

T: Mt Abbot, 50 km W of Bowen, Qld, 20°06'S, 147°46'E, 800 m alt., 2 Aug. 1992, *A.R.Bean 4873*; holo: BRI; iso AD, BISH, HO, K, L, MEL, MO, NSW, all *n.v.*

### Published protologue and synonyms

Protologue, synonymy and synonymy typification as published in the original Flora of Australia volume.

Protologue

*Austrobaileya* 5: 313 (1999)

### Description

Shrubs to c. 4 m tall; bark lamellated (described by collector as 'fibrous'). Branchlets glabrous, pale brown but often with a grey-white overlay of dead epidermal cells. Phyllodes linear, (7–) 9.5–15 cm long, 1.5–2 mm wide, straight to shallowly incurved, glabrous, with numerous parallel non-anastomosing longitudinal nerves, the central nerve slightly more pronounced than the rest. Inflorescences 2- or 3-headed rudimentary racemes 1–2 mm long; peduncles 1–2 mm long, resinous, glabrous or subglabrous; spikes short-cylindrical, 8–9 mm long and c. 5 mm wide at anthesis (when dry). Flowers 5-merous; calyx gamosepalous.



Flora of Australia  
"asdasd" (© Flora of Australia)

[View all images](#)

Species distribution experiments, at your fingertips.

Want to refine or project an experiment into the future? [Log in now.](#)

**Model:** Maxent

**Climate Dataset:** Current Climate (5km resolution)

**Climate Layers:** Annual Mean Temperature, Temperature Seasonality, Maximum Temperature of Warmest Month, Minimum Temperature of Warmest Month, Annual Precipitation, Precipitation Seasonality, Precipitation of Wettest Quarter, Precipitation of Driest Quarter.

### Tracking estuarine crocodiles on Cape York Peninsula using GPS-based telemetry

All Animals

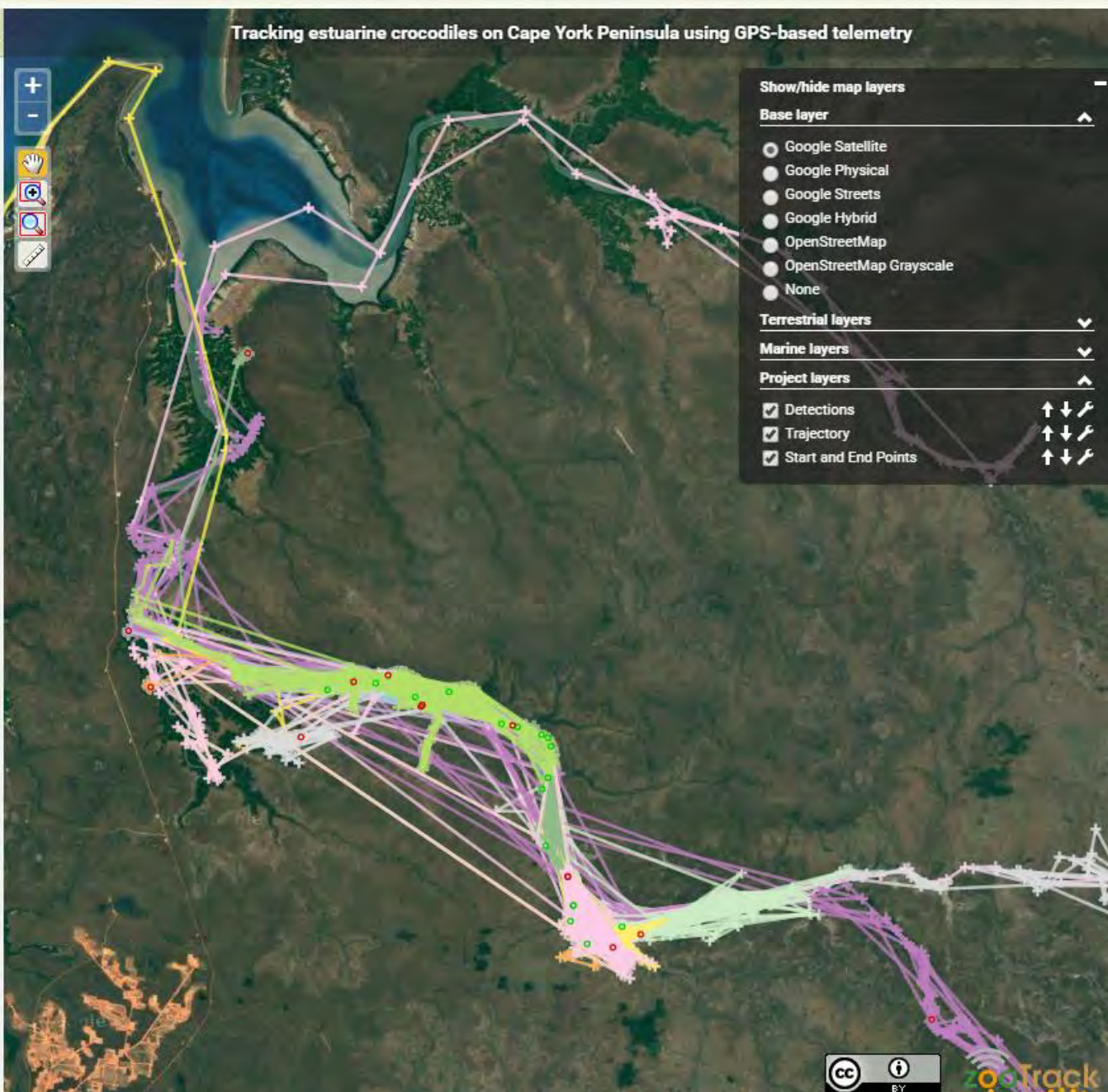
Date Range: 2009-08-11 to 2013-08-26  
Animals: 17

Detections Layer

Trajectory Layer

Select all

- 13866
- Ryan
- 13878
- 13880
- 13882
- 241
- 242
- 246
- Gregory
- 3076
- 3078
- 3082
- 3086
- 3092
- Erin
- Jurgen
- Sheridan





## The APA

The Atlas of Prehistoric Australia is a storehouse of information on the occurrences of organisms through time and space. It is the deep-time add-on to the ALA, and emphasises the continuum between past and present, and the valuable role that historical data on taxonomy, ecology and environment can play in improving our understanding of Australia's unique biota.

## Search for records in Atlas of Prehistoric Australia

Simple search

Advanced search

Batch taxon search

Catalogue number search

Spatial search

**Note:** the simple search attempts to match a known **species/taxon** - by its scientific name or common name. If there are no name matches, a **full text** search will be



Community mapping & controlling  
weeds in our region

[Home](#) [Weeds to watch for](#) [Mapping - how to contribute](#) [Weed sightings to date](#) [About](#) [Help](#) [Sign In](#)

## Welcome to the ACT and Southern Tablelands Weed Spotter website






Alligator Weed ( *Alternanthera philoxeroides* )

The plants shown above offer a sample of the **priority weeds** to watch out for in the ACT and Southern Tablelands region. If you see these weeds, or others identified on this website, then spot, snap and send.

Thanks for helping to map and monitor the weeds of the ACT and Southern Tablelands. Just follow these easy steps.

1. Learn about the priority [weeds to watch for](#) in your local area.
2. Use the [Weed Identification Tool](#) to help identify unknown plants.

### GET INVOLVED

1. Spot 
2. Snap 
3. Send 

### Going Mobile

Available on both  
*iPhone and Android*  
smart phones soon



# Yellow Box Fragmentation Project

community participation in science



[Home](#)

[Field Guide](#)

[View Records](#)

[About the Project](#)

[Site Help](#)

[Sign In](#)

## The Yellow Box Fragmentation Project

This is a CSIRO research project to determine the genetic variability of yellow box (*Eucalyptus melliodora* A.Cunn. ex Schauer) across its range, and to analyse how fragmentation is affecting population and species resilience. The project is engaging selected members of the public to assist in collecting seed samples and information about the seed trees and their local environmental conditions. This system is being used for recording the data. Seed samples collected will be sent to Linda Broadhurst for genetic sequencing and analysis.

### Why Yellow Box?

Yellow Box (*Eucalyptus melliodora*) is a long-lived tree species that occurs through the NSW South West Slopes, Riverina and northern Victoria in areas which have a long history of grazing and cropping. Extensive areas within this range have been cleared for agricultural production which has resulted in fragmentation of the species into remnant reserves, roadsides, and isolated individuals in paddocks.



*E. melliodora* is a beautiful and majestic tree.

Credit: Tony Rodd

### About this Site

This is the new national site for recording weed observations. It is still a work in progress!

When it is completed this site will host the database containing all of the projects we are working on, our current and planned surveys, your contributed sightings, and profile information for many species.

### Partners

[Commonwealth Scientific and Industrial Research Organisation \(CSIRO\)](#),  
[Atlas of Living Australia](#),

### Contact Us

Please direct all enquiries to:

Linda Broadhurst  
email: [Linda.Broadhurst@csiro.au](mailto:Linda.Broadhurst@csiro.au)

### Latest Statistics

Number of users 2  
Total number of records 0  
Number of species recorded 0

Home / Projects / ALA's 'BioCollect' software - test project



## ALA's 'BioCollect' software - test project

Atlas of Living Australia

[About](#) [News](#) [Resources](#) [Surveys](#) [Data](#)



PROJECT

ONGOING

Start date: 19 June, 2015

Visit us at <http://biocollect-test.ala.org.au>



# BioCollect

*a new innovation in field data capture infrastructure*

Powered by



### About the project

#### Aim

This is a test project to demonstrate ALA's new tool for hosted data recording support to citizen science projects, biological and ecological surveys, as well as 'works' based projects. This functionality is still under development.

#### Description

The ALA is developing a hosted capability for people running citizen science projects to build their own surveys to record and collect data for their particular projects. Project owners will have full control over what data is collected as well as many other aspects of their "project site".

This test project is an example of features available to projects hosted in the BioCollect system.

Announcement

### Get Involved!

Keep watching this project over the coming months to see new features being added. An announcement will be posted here when we are getting close to launching the new BioCollect tool.

Please feel free to ask questions or send ideas and comments too.

If you are interested in using this tool for your project, please email us with your contact details.

#### Contact Email

[support\\_bdrs@csiro.au](mailto:support_bdrs@csiro.au)

#### Tasks

Contact the Atlas of Living Australia ([support\\_bdrs@ala.org.au](mailto:support_bdrs@ala.org.au)) to find out more about use of Atlas tools for your situation.

## Specimens images from Australia's Natural History collections

Images from Australian Natural History collections made available by the museums and herbaria of Australia. To view images from all collections, [click here](#).

### South Australian Museum Terrestrial Invertebrate Collection

South Australian Museum



The collection has Australia-wide and Indo-Pacific representation, plus some world specimens for comparative purposes.

### Australian National Insect Collection

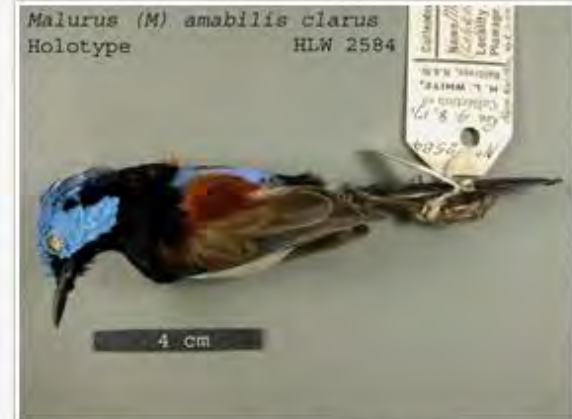
Commonwealth Scientific and Industrial Research Organisation



The Australian National Insect Collection is recognized both nationally and internationally as a major research collection.

### Museum Victoria Ornithology Collection

Museum Victoria



The Ornithology Collection contains more than 70 000 specimens of mounted birds, skins, skeletons, eggs and specimens preserved in alcohol. One of the largest Australian avian collections, primarily of Australian species and with a strong Victorian emphasis, it includes material from a broad spectrum of the world's avifauna and represents in excess of 4000 species.

### Australian Museum Entomology Collection

Australian Museum



### Museum Victoria Entomology Collection

Museum Victoria



### Australian Museum Marine Invertebrate Collection

Australian Museum





# Specimen images from South Australian Museum Terrestrial Invertebrate Collection

## Taxonomy

Clear filters

- Kingdom: ANIMALIA
- Phylum: ARTHROPODA
- Class: INSECTA
- Order
- COLEOPTERA (1983)
- HEMIPTERA (1421)
- HYMENOPTERA (101)
- LEPIDOPTERA (433)
- MANTODEA (36)
- NEUROPTERA (30)

## Types

- allotype (126)
- cotype (17)
- holotype (1547)
- lectotype (152)
- paralectotype (17)
- paratypes (68)
- syntype (386)
- type (598)
- all values

## Sex

- U (1857)
- M (643)
- F (382)
- Unknown (144)
- Unsexed (91)
- Male (39)
- Female (34)
- u (5)
- 2 (4)
- M,F (4)
- m (3)
- 3 (2)
- 4 (1)
- 5 (1)
- 7 (1)
- 8 (1)

4329 images are available.

 Tesseracton intricatum	 Tesseracton pillicrepus	 Onthophagus bicarinaticeps	 Onthophagus bicarinaticeps	 Onthophagus bicavicollis
 Onthophagus blackburni	 Onthophagus clypealis	 Onthophagus conspicuus	 Onthophagus dinjerra	 Onthophagus duboulayi
 Onthophagus erichsoni	 Onthophagus evanidus	 Onthophagus evanidus	 Onthophagus flavoapicalis	 Onthophagus flavoapicalis
 Onthophagus godarra	 Onthophagus hoplocerus	 Onthophagus leanus	 Onthophagus mamillatus	 Onthophagus margaretensis
 Onthophagus queenslandicus	 Onthophagus rubescens	 Onthophagus rubescens	 Onthophagus rugosicollis	 Onthophagus semimetallicus

40220102 Date 9.6.97 A  
Family Thelypteridaceae  
Genus Macrothelypteris  
Species torresiana

Common name

None

Habit erect, terrestrial  
Distribution rainforest, wet river bank  
Location Barron Falls (bottom), Qld  
Altitude  
Position

Calder Chaffey  
Collection

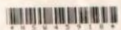
Medicinal Plant  
Herbarium  
Southern Cross University



IG  
A



NSW  
LOAN: 096/62



NSW  
LOAN: 099/69



NSW473233



Mr. Biggs paddock  
7/10/64

CONFIRMAVIT  
Seen for Flora of Australia  
Det. A.E. Holland (BRD) 21/11/1998

Seen for Flora of Australia ASTERACEAE  
*Hemitegma lyrata* (Bunge) Fisch. & C.A. Mey.  
Det. A.R. Bean (BRD) Oct. 2000

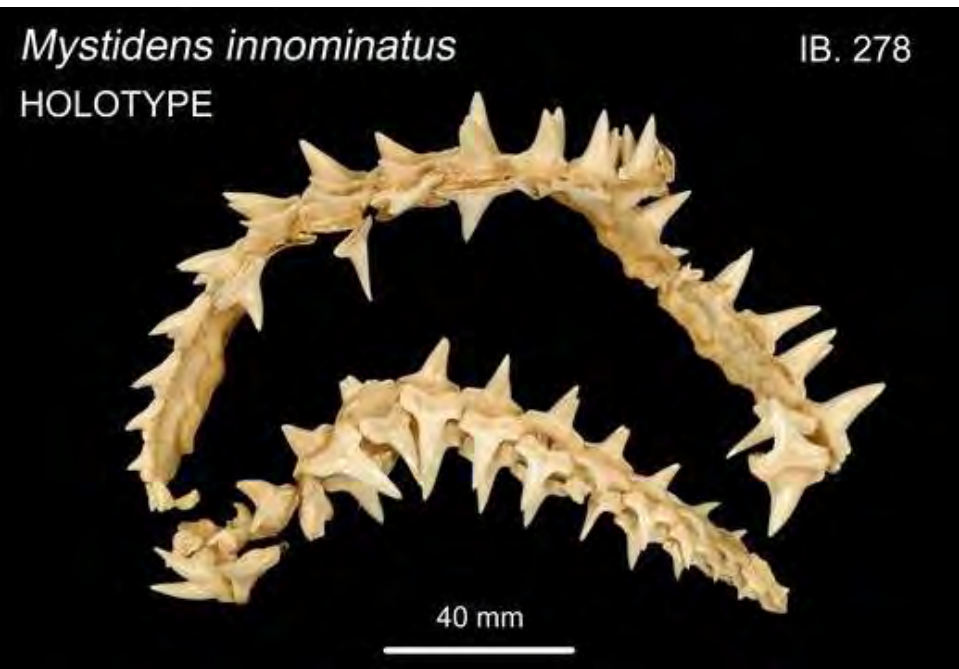
NSW DATA  
DATABASE

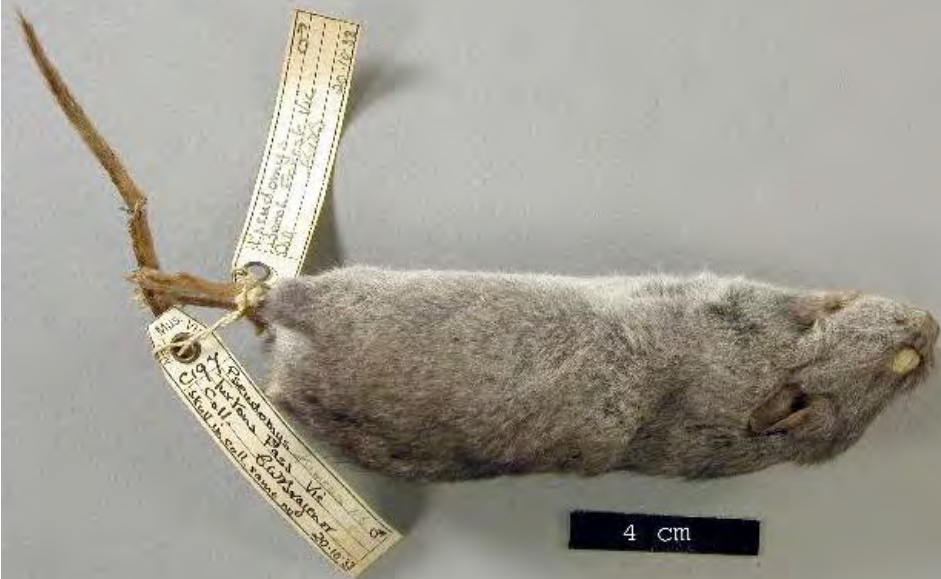
West side of the gulf

No. 4575  
*Protolaria Cunninghamii*  
[From map of route in Bartholomew + Creutz,  
School Atlas, this colln. would date from 1944-5]  
Dr. Leckhardt.

Biggs Creek and  
paddock  
10/10/64

NSW473233  
*Hemitegma lyrata* (Bunge) Fisch. & C.A. Mey.  
*Saussurea carthamoides* Benth.  
Dr. Leckhardt





# LIBELLULIDAE

## Common Skimmers

[Record a sighting](#) [Alerts](#)

**Name source**  
[Australian Faunal Directory](#)

**Rank**  
Family

**Data links**  
[LSID](#) [JSON / WMS / RDF](#)

**Species presence**

-  Recorded In Australia
-  Terrestrial Habitats
-  Terrestrial Aquatic Habitats

[Overview](#) [Gallery](#) [Names](#) [Classification](#) [Records](#) [Literature](#) [Sequences](#)

### Specimen Images



[Home](#) » [Image Details](#) » Viewing Image 4845589

Show subimages



[Home](#) » [Image Details](#) » Viewing Image 4845589

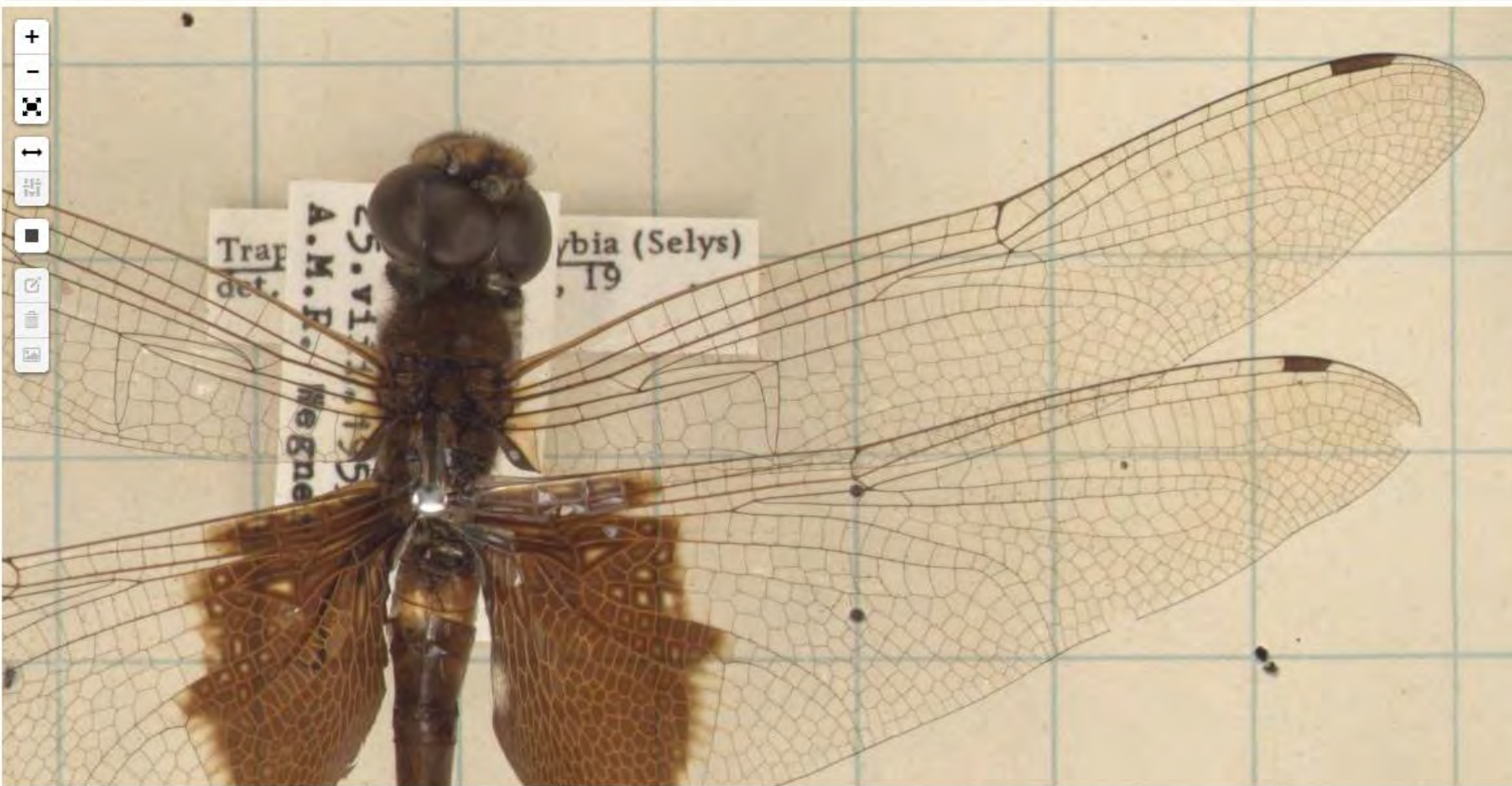
Show subimages





Home » Image Details » Viewing Image 4845589

Show subimages



Home » [Image Details](#) » Viewing Image 4845589

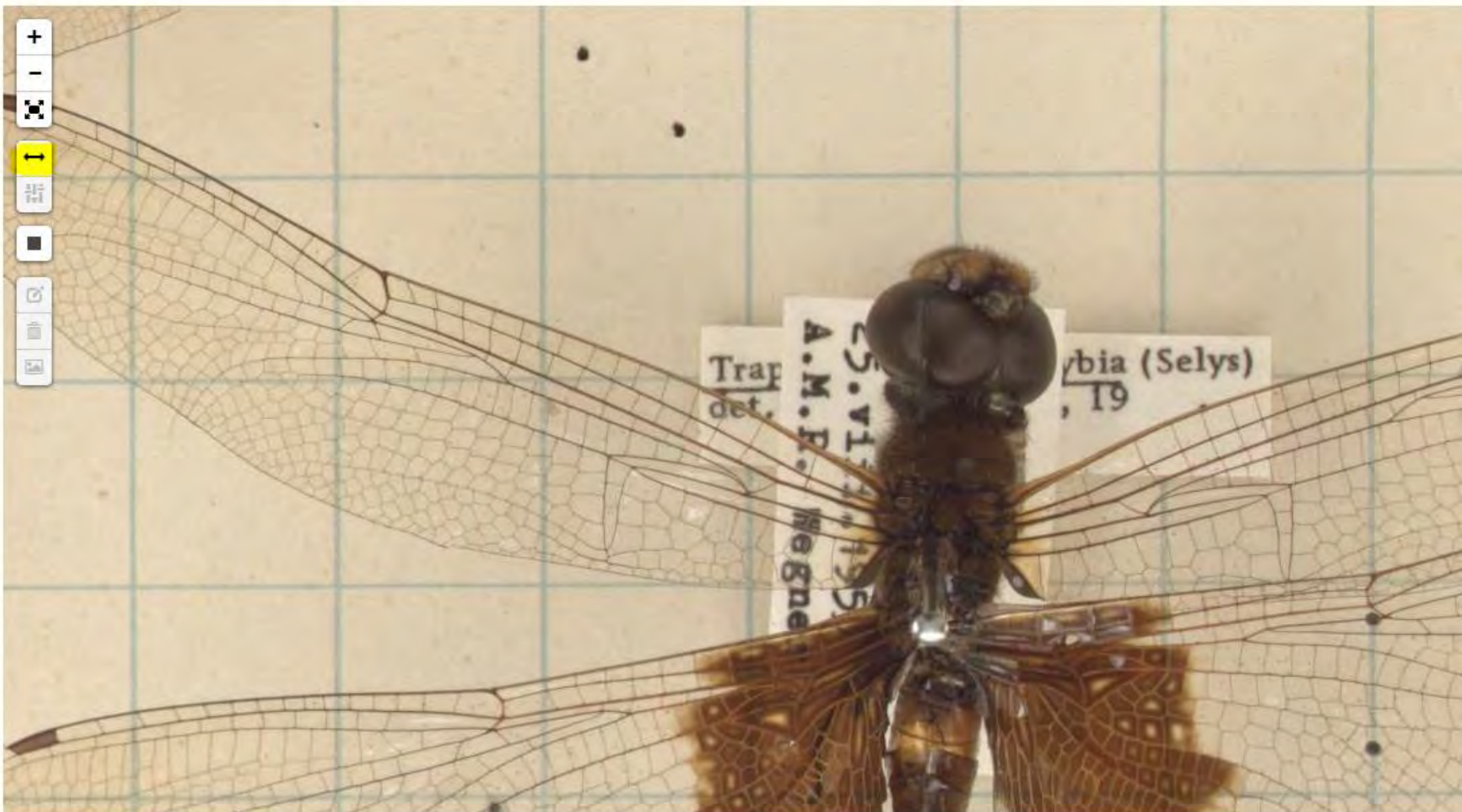
1 album [+ Up](#)

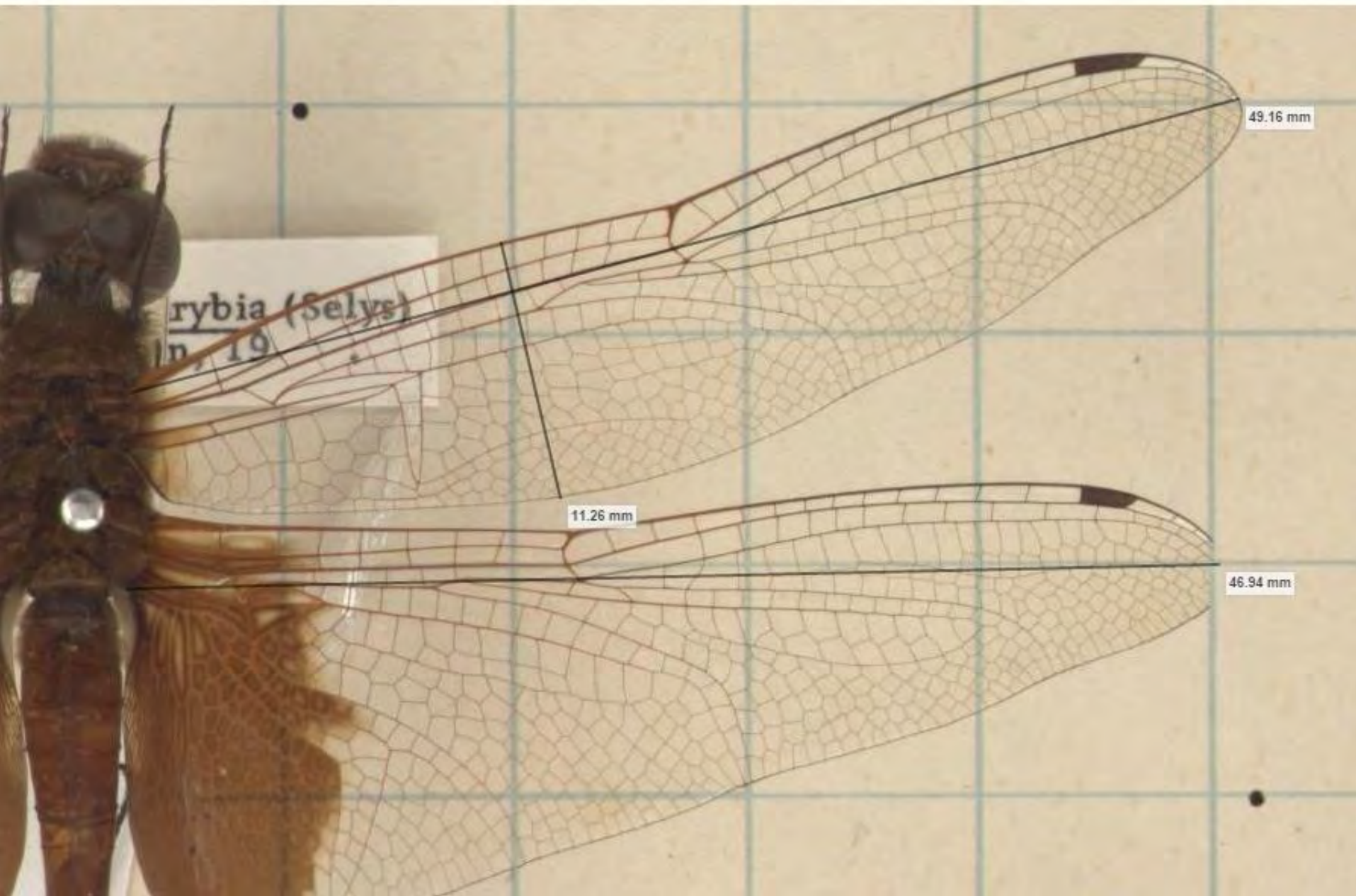
Show subimages



[Home](#) » [Image Details](#) » Viewing Image 4845589

Show subimages





Home : [Blogs & news](#) :: Learning by doing: The ALA is sponsoring Yugul Mangi Rangers and ecologists to conduct two-way biodiversity research in remote Arnhem Land

# Learning by doing: The ALA is sponsoring Yugul Mangi Rangers and ecologists to conduct two-way biodiversity research in remote Arnhem Land

5 December, 2014

The Aboriginal Yugul Mangi Rangers (a group of 5 men and 4 women) are working together with Emilie Ens and Mitchell Scott, ecologists from Macquarie University, to document species occurring in one of the lesser known parts of the country – south eastern Arnhem Land. The project will enter Western and Indigenous scientific knowledge into the Atlas of Living Australia (ALA) and produce a two-way Indigenous engagement case study to encourage more Indigenous content.

[Read more](#)



Cherry Daniels (first Yugul Mangi Ranger co-ordinator, Senior Ngandi woman and IPA Cultural Advisor) with Edna Nelson (Yugul Mangi Ranger).



Andy Lukaman Peters explaining to Benjamin Wilfred about the bush food and medicine plants near Lake Katherine

## Recent posts

- [The different challenges of integrating data from many sources](#)
- [Panoramio](#)
- [Sign up to GBIF Australia email alerts](#)
- [Look for Whale Sharks in your Lounge Room](#)
- [Sandbox – custom search facets for your data](#)
- [Using the ALA to help develop biodiverse plantings suitable for changing climatic conditions](#)
- [Viewing species layers in uDIG & ArcGIS](#)
- [PhyloJive – Integrating biodiversity data with phylogenies](#)
- [The Atlas in the Classroom](#)
- [Holiday Greetings from the Atlas of Living Australia](#)
- [Australian BHL volunteers receive award](#)
- [Atlas Science Symposium](#)
- [Science Symposium presentations now available](#)

Leave a Reply

# Data & Knowledge – *two-way*



Wi study bla Kantri  
Research Team



Maritza Roberts filming the medicinal cultural  
knowledge of Marjorie Daniels



# ALA — sharing biodiversity knowledge



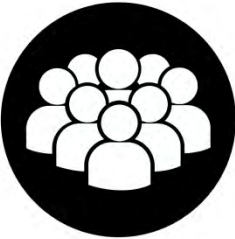
**\$55 million investment**

**NCRIS**  
National Research  
Infrastructure for Australia  
An Australian Government Initiative

*Leverage the investment*



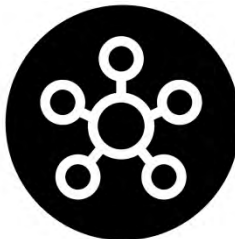
A world-leading collaborative e-infrastructure integral to growing biodiversity knowledge



**Partners – founding & beyond**



>70 million records  
>1.2 million images  
>500 data sets  
>470 spatial layers  
>11 B records downloaded



**National Research infrastructure**

**NCRIS**  
National Research  
Infrastructure for Australia  
An Australian Government Initiative



**Data**

- specimens
- occurrence
- images, sounds
- literature
- sequences
- more coming.....




**Open data, open source,  
open access, open services,  
open infrastructure**



**System**

- data capture & aggregation
- data management
- data discovery
- data visualisation
- data analysis & reporting

# Going Global



Free and open access to biodiversity data

## GLOBAL BIODIVERSITY INFORMATION FACILITY

# Data Portal improvements

3238  
8,898  
3794

The Global Biodiversity Information Facility (GBIF) was established by governments in 2001 to encourage free and open access to biodiversity data, via the Internet. Through a global network of countries and organizations, GBIF promotes and facilitates the mobilization, access, discovery and use of information about the occurrence of organisms over time and across the planet.

LATEST NEWS Call for proposals for the 2012 Young Researchers Award



About iDigBio | Research | Technical Information | Education

43,812,975 Specimen Records  
11,798,636 Media Records  
626 Records

Making data and images of millions of biological specimens available on the web

Search the Portal

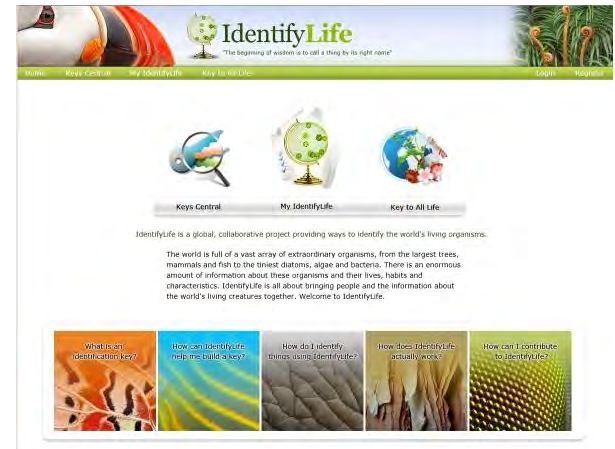
Why digitization matters: taking about what we do and why

- Digitization**: Learn, share and develop best practices
- Sharing Collections**: Documentation on data ingestion
- Working Groups**: Join in, contribute, be part of the community
- Proposals**: New tool and workshop ideas
- Citizen Scientists**: How can you help biological collections?

Researchers: Learn about research directions

Collections Staff: Learn how your collection can benefit from our work

Teachers & Students: Download lesson plans about using digitized specimens



## IdentifyLife

The beginning of wisdom is to call a thing by its right name

Keys Central | My IdentifyLife | Key to All Life

IdentifyLife is a global, collaborative project providing ways to identify the world's living organisms.

The world is full of a vast array of extraordinary organisms, from the largest trees, mammals and fish to the tiniest diatoms, algae and bacteria. There is an enormous amount of information about these organisms and their lives, habits and characteristics. IdentifyLife is all about bringing people and the information about the world's living creatures together. Welcome to IdentifyLife.

- What is an identification key?
- How can IdentifyLife help me build a key?
- How do I identify things using IdentifyLife?
- How does IdentifyLife actually work?
- How can I contribute to IdentifyLife?



## EOL Encyclopedia of Life

### Global access to knowledge about life on Earth

Search EOL

Currently in the Spotlight: 937,258

Community Activity



## BOLD SYSTEMS

Databases | Taxonomy | Identification | Workbench | Resources

Barcode: 1,346,000

Public Data Portal: A data retrieval interface that allows for searching over 1.7M public records in BOLD using multiple search criteria including, but not limited to, geography, taxonomy, and depositor.

Barcode Index Numbers: A searchable database of Barcode Index Numbers (BINs), sequence clusters that closely approximate species.

DNA Barcode Education Portal: A custom platform for educators and students to explore barcode data and contribute novel

Workbench: An integrated data collection and analysis environment that securely supports the assembly



## Biodiversity Heritage Library AUSTRALIA

About BHL | Contact Us

The Biodiversity Heritage Library—Australia is the digital literature component of the Atlas of Living Australia. BHL-Au also participates in the consortium of Biodiversity Heritage Libraries and affiliated literature digitization projects around the world.

Search Our Collection

Browse Our Collection: Titles | Authors | Maps | Year

Featured Books: Australian bird species, National History of Victoria, Proceedings of the Division of Entomology

Australia | Biodiversity Heritage Library



**?** Aprende cómo consultar datos de biodiversidad.

Buscar en el portal de datos

Búsqueda avanzada



### Instituciones, colecciones y proyectos



Información de todas las entidades españolas que publican datos en GBIF (p.ej.: descripción, contacto, registros en línea, portal institucional).

### Juegos de datos



Información de los juegos de datos de las instituciones y proyectos participantes en GBIF, detalles de los registros, licencias de uso, citación...

### Datos georreferenciados



Mapa de los registros con coordenadas. Filtre, visualice y descargue los datos por nombre científico, grupo taxonómico, área geográfica...

### Información accesible a través del Portal de Datos de GBIF.ES.



- REGISTROS: **11.973.258**
- JUEGOS DE DATOS: **186**
- INSTITUCIONES: **81**

**i** Estamos ajustando algunas funcionalidades del portal. Disculpe las molestias que esto pueda ocasionar. Si observa cualquier incidencia agradeceríamos que nos la comunicase mediante mensaje a [feedback@gbif.es](mailto:feedback@gbif.es)

GBIF.ES es el **Nodo Nacional de Información sobre Biodiversidad**, patrocinado por el Ministerio Español de Economía y Competitividad y gestionado por el Consejo Superior de Investigaciones Científicas. El Portal de Datos de GBIF.ES se basa en el desarrollo de ALA y cuenta con el apoyo informático del IFCA, el asesoramiento de GBIF y el soporte de CrowdIn para las traducciones.

©Algunos derechos reservados. Imágenes usadas con permiso de los respectivos autores

#### CONTACTO

GBIF España. Unidad de Coordinación  
Real Jardín Botánico - CSIC  
C/ Claudio Moyano, 1  
28014 MADRID - España  
Tel.: 34 914203017 extensión 273  
[info@gbif.es](mailto:info@gbif.es)



#### DATOS

Instituciones, colecciones y proyectos  
Juegos de datos  
Explorar por área  
Buscar

#### SERVICIOS

Publicación y alojamiento de datos: IPT  
Alojamiento de imágenes  
Formación

#### SOFTWARE

Herbar | Zoorbar | HZL | Darwin Test

#### RECURSOS

Condiciones de uso  
Intercambio de datos  
Uso de imágenes digitales  
Datos sensibles  
Gulas GBIF



## LES DONNÉES FRANÇAISES SUR LA BIODIVERSITÉ

Pour des raisons de maintenance, le portail français d'accès aux données et aux métadonnées sera indisponible du **mardi 05/01 20h au vendredi 12/02**. La remise en service du portail sera annoncée sur notre compte Twitter.

Merci de votre compréhension !

### LES COLLECTIONS



© Sophie Parneton

Informations sur les collections françaises sur la biodiversité. Vous retrouvez la description, les contacts et autres informations pratiques sur les acteurs français principaux de la biodiversité.

Accéder aux collections

### JEUX DE DONNÉES



© Sophie Parneton

Accès aux données d'occurrences et informations sur les jeux de données publiés par les institutions ou collections participant au GBIF (licence, citation, etc.)

Accéder aux jeux de données

### PORTAIL SPATIAL



© Sophie Parneton

Exploration des occurrences géo-référencées (en cours de construction).

Explorer les occurrences

SEARCH  [CONTACT US](#) [LOG IN](#) [CHOOSE ATLAS](#)

ATLAS OF LIVING SCOTLAND

SPECIES LOCATIONS HABITATS ANALYSE GET INVOLVED DATA PARTNERS ABOUT

The Atlas of Living Scotland is your gateway to learning about Scotland's natural world

Search the Atlas of Living Scotland

SEEN SOMETHING?  
Identify, learn and record your own observations

VIEW IMAGES  
View the Atlas image gallery

EXPLORE YOUR AREA  
Search the atlas for information about a place

ANALYSE DATA  
Undertake your own analyses of atlas data



- Spain
- Portugal
- France
- Scotland
- New Zealand
- Argentina
- Costa Rica
- UK

The Atlas of Living Scotland is part of Scotland's Environment Web

visit Scotland's Environment Web

FEATURED SPECIES

ATLANTIC PUFFIN  
*Fratercula arctica*

distribution map  
species page

FEATURED SPECIES

PEREGRINE FALCON  
*Falco peregrinus*

distribution map  
species page

FEATURED SPECIES

BOG ASPHODEL  
*Narthecium ossifragum*

distribution map  
species page

LATEST SIGHTINGS

Yellow Fan  
09/08/2014, 22:09:00  
[Fungi](#) [Custodiaceae](#) [Data set](#)

Badger  
11/01/2016, 11:00:00  
[Amniota](#) [Mustelidae](#) [Data set](#)

Plants, Fungi  
27/11/2015, 21:11:00  
[Data set](#)

Fungi, Basidio's  
25/11/2015, 13:00:00  
We discovered this rare find on

### DATA PARTNERS

Learn about, be inspired by, and join the organisations contributing information to this atlas. Follow these links to learn about our Atlas Data Partners or scroll through to find more.



Modular – can do components

- Species pages
- Occurrence data
- Spatial portal

Challenges:

- Language
- Layers in Spatial Portal
- Names
- DATA
- We are not a database!

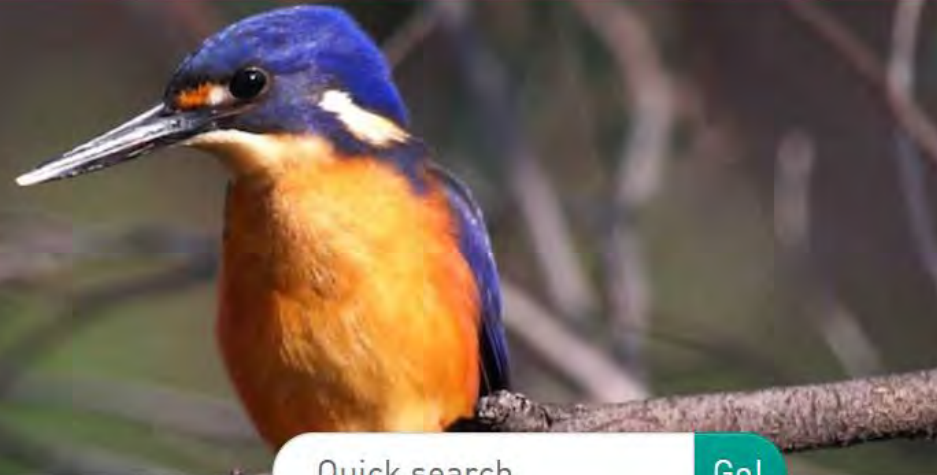
But we have never had anyone implement our infrastructure at a regional level.

## Advantages:

- Sharing of resources
- Spread the capacity
- Conservation issues do not stop at the border – you need regional data
- Sustainability



Australian Government



Quick search

Go!

Browse by  
**Species**

Browse by  
**Catchment**

Browse by  
**Dataset**

Browse by  
**Wetland**

Browse by  
**MDBA Plan Areas**

**Resources**

[Home](#) → [Regions](#)


## Select a region to explore

Select the type of region on the left. Click a name or click on the map to select a region. Use map controls or shift-drag with your mouse to zoom the map.

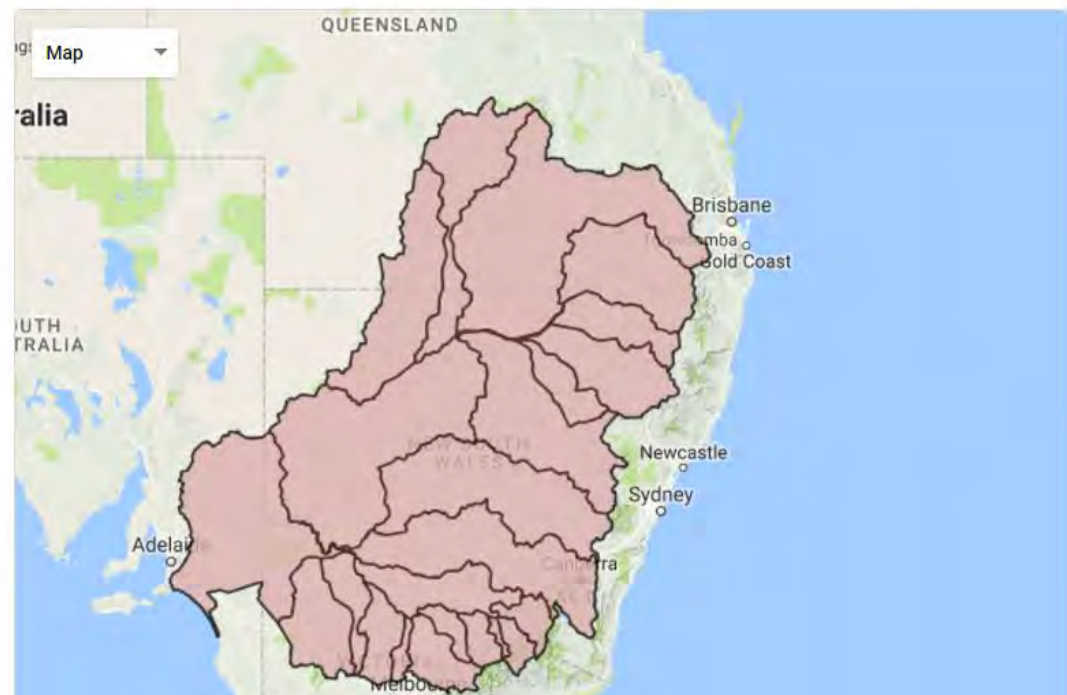
Click the region button to explore occurrence records, images and documents associated with the region.

**i** Click on a region name to select an area.

**i** Click on the map to select an area.

 Reset map

- ▼ Murray-Darling basin sub-catchments
  - AVOCA
  - BORDER RIVERS
  - BROKEN
  - CAMPASPE
  - CASTLEREAGH
  - CENTRAL MURRAY
  - CONDAMINE
  - DARLING
  - GOULBURN
  - GWYDIR
- ▶ Surface water plan areas
- ▶ Ground water plan areas
- ▶ Surface water sustainable diversion limit areas



## Occurrence records (1,469)

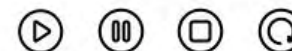
Toggle: All / MDBA records   MDBA

Explore by species

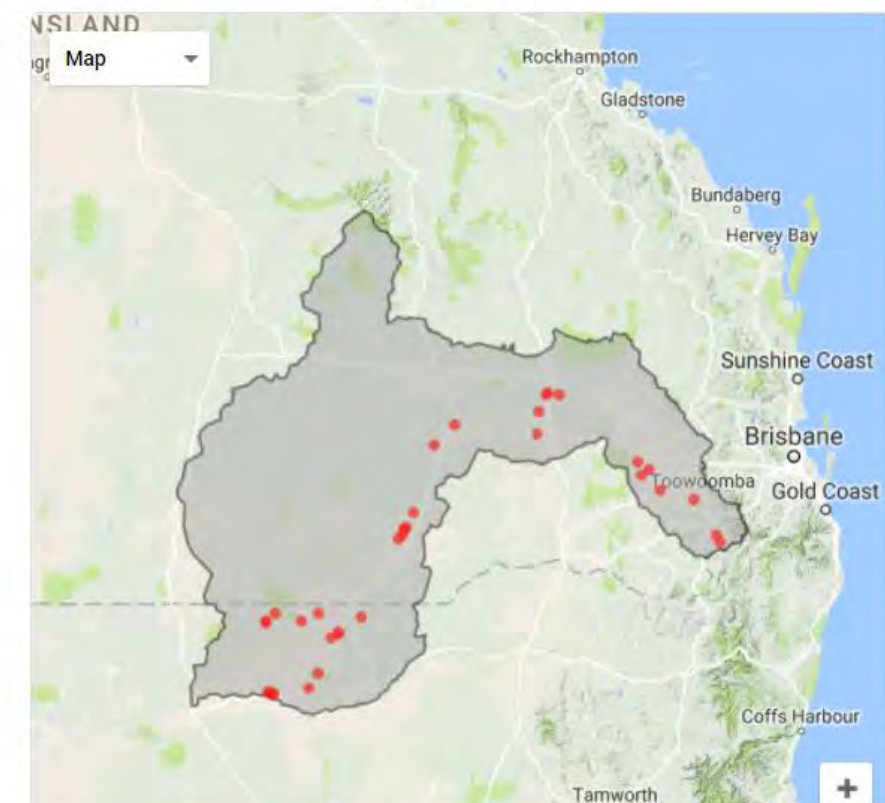
Explore by taxonomy

Group	Species	Records
▼ All Species		
▶ Mammals		
▶ Birds		
▶ Insects and Spiders		
▶ Amphibians		
▶ Reptiles		
▶ Fish		
▶ Molluscs		
▶ Crustaceans		
▶ Plants		
▶ Fungi		
	1. <i>Ambassis agassizii</i> :	4
	Agassiz's Chanda	
	Perch	
	2. <i>Anas (Anas)</i>	1
	<i>superciliosa</i> :	
	Australian Wild Duck	
	3. <i>Anas (Nettion) gracilis</i>	2
	: Australasian Grey	
	Teal	
	4. <i>Anhinga</i>	1
	<i>melanogaster</i> : Darter	
	5. <i>Ardea (Ardea)</i>	1
	<i>pacifica</i> : Pacific	
	Heron	
	6. <i>Ardea alba</i>	1
	7. <i>Aythya (Nyroca)</i>	2
	<i>australis</i> : Barwing	
	8. <i>Bidyanus bidyanus</i> :	2
	Bidyan	
	9. <i>Carassius auratus</i> :	81
	Carp	
	10. <i>Chenonetta jubata</i> :	2
	Australian Wood	

Time Controls and Map ⓘ



1850 1850 - 2017 2017





# CONDAMINE

## Occurrence records (550,422)

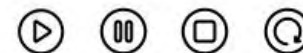
Toggle: All / MDBA records  All

Explore by species

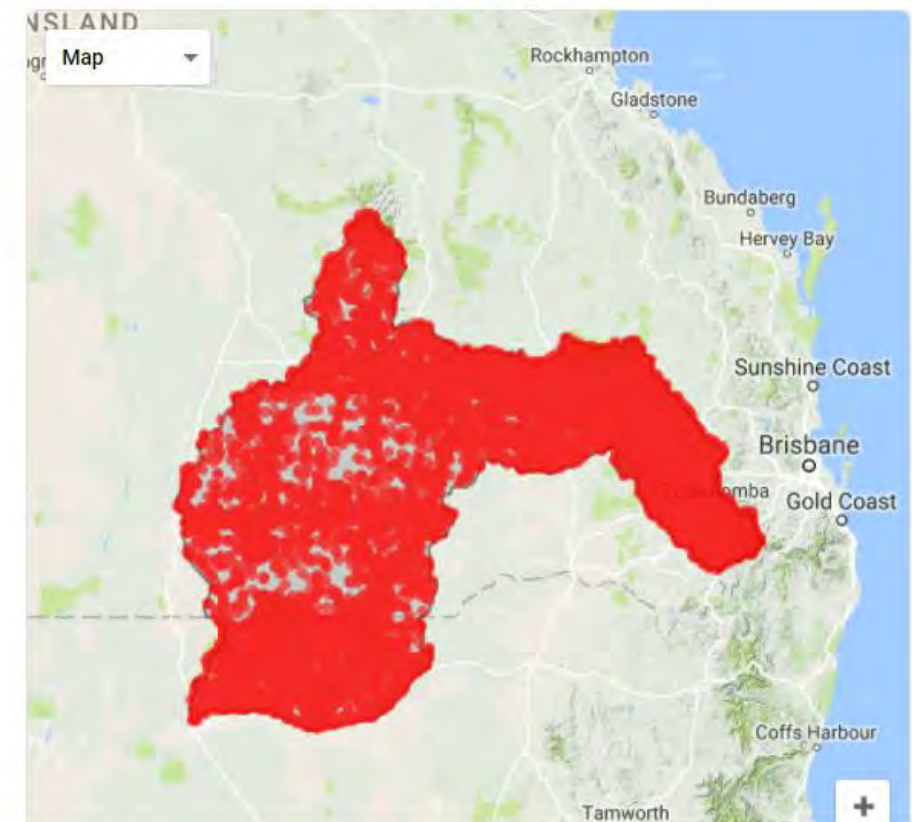
Explore by taxonomy

Time Controls and Map **i**

Group	Species	Records
▼ All Species		
► Mammals		
► Birds		
► Insects and Spiders		
► Amphibians		
► Reptiles		
► Fish		
► Molluscs		
► Crustaceans		
► Plants		
► Fungi		
	1. "Hypomecis" catephes	1
	2. "Hypomecis" curtaria	1
	3. 'Ochlerotatus' ('Finlaya') biocellatus	2
	4. 'Ochlerotatus' ('Finlaya') candidoscutellum	2
	5. 'Ochlerotatus' ('Finlaya') mallochi	7
	6. 'Ochlerotatus' ('Finlaya') monocellatus	4
	7. 'Ochlerotatus' ('Finlaya') subauridorsum	4
	8. 'Ochlerotatus' daliensis	19
	9. Aaaba nodosus	1
	10. Aades griseatus	1
	11. Abantiades labyrinthicus	1
	12. Abbreviata confusa	1



1850 1850 - 2017 2017



# WHY?

We need to discover and document nature (in this case biodiversity) in a time frame to provide an informed response to human impact.

# WHY?

We need to discover and document nature (in this case biodiversity) in a

time

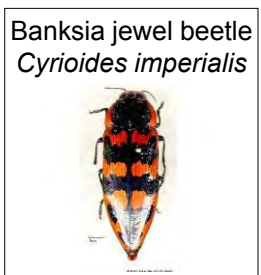
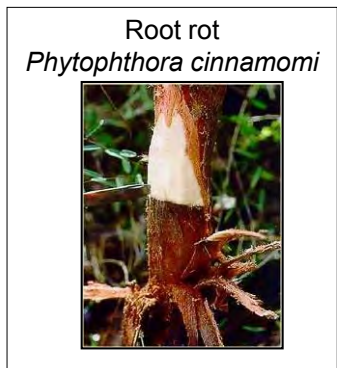
But we can't do it on our own.

res

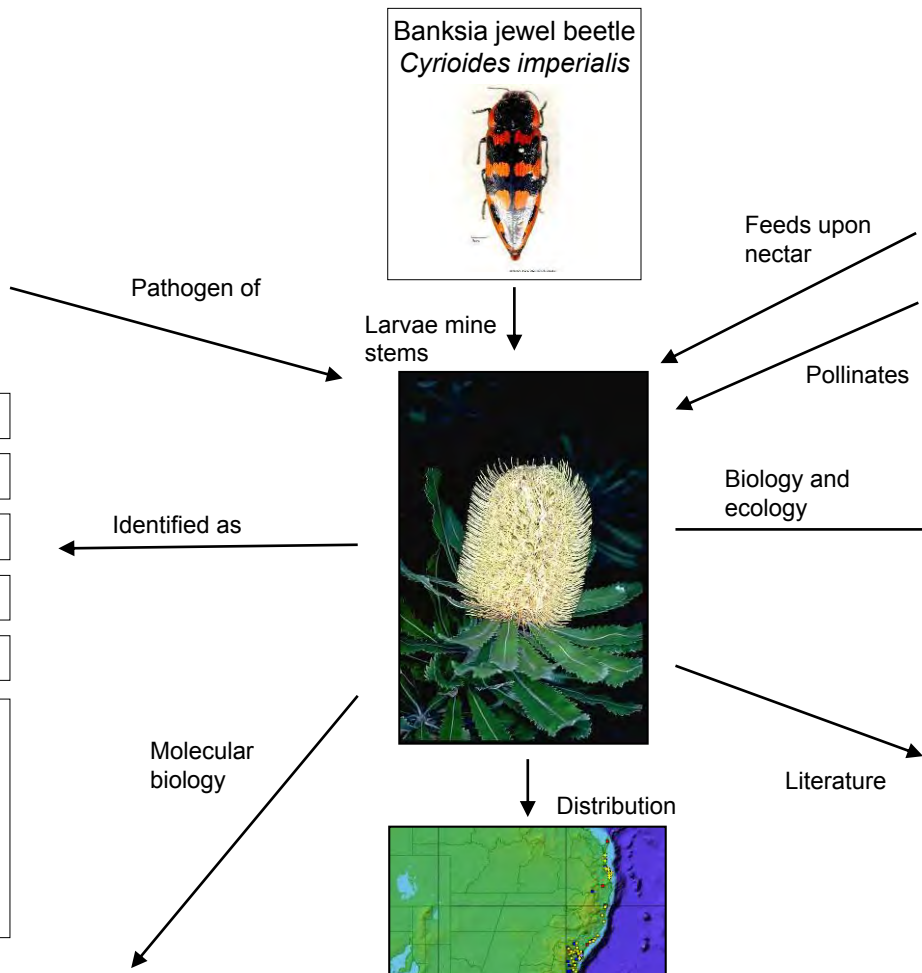
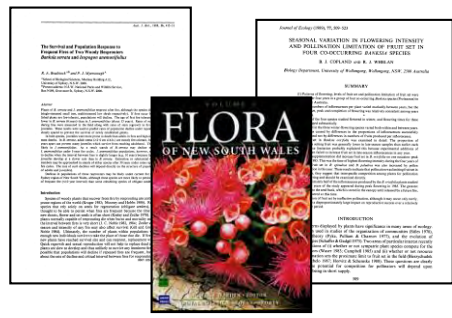
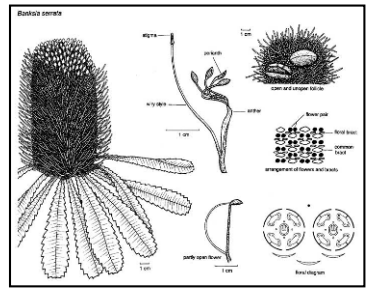
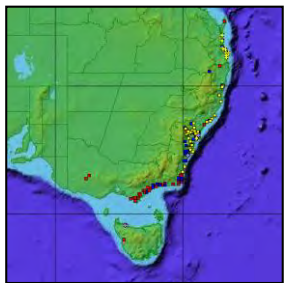
Not enough:

- time
- resources
- networks/collaborations

# Biodiversity information



- Banksia serrata* L.f.
- = *Isostylis serrata* (L.f.) Britten
- = *Sirmuelleria serrata* (L.f.) Kuntze
- Old Man Banksia
- Saw Banksia
- Kingdom: Plantae
- Division: Magnoliophyta
- Family: Proteaceae
- Subfamily: Grevilleoideae
- Tribe: Banksieae
- Subtribe: Banksiinae
- Genus: *Banksia* L.f.



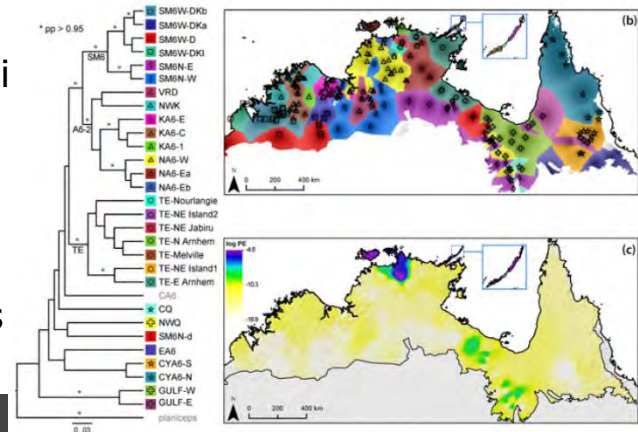
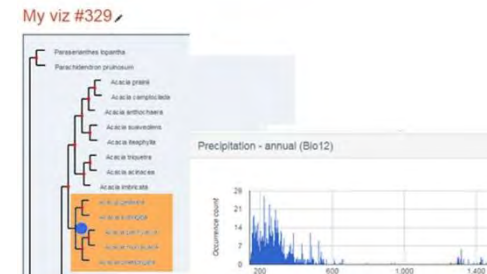
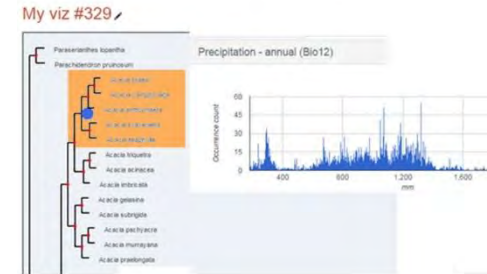
# Point to an integrated future

- Bringing it all together in integrated framework
  - Species pages
  - Spatially explicit biodiversity data
  - Computable data: trait data, derived genomic data, species interactions
  - Images
  - Mapping and analysis tools
  - Taxonomic workbenches (shared)
  - Dynamic publication: eFlora's and eFaunas
  - Education and outreach

# ALA – moving forward

## In the next 5 years we will:

- Increase research capability by incorporating a wide range of species or specimen level attribute data (“trait data”):
  - Morphological characters
  - Species interactions
  - Life history traits
  - Ecological parameters
  - Derived genetic/genomic data
- Create a platform for distributed, virtual natural history collections.
- Support the production of a series of eMonographs (starting with Flora of Australia on-line).
- Create (or promote others to create) virtual laboratory environments using ALA infrastructure to support a variety of outcomes.
- Increase community and citizen science engagement with new tools and apps.
- Increase our support for Indigenous participation in biodiversity infrastructure and knowledge management (by Indigenous communities).
- Support dynamic environmental monitoring and reporting capabilities (e.g. a dynamic State of the Environment).
- Collaborate to streamline data contribution and access across NCRIS facilities.



# ALA – moving forward

## In the next 5 years we will:

- Trait data
  - Genomic information
  - Virtual natural history collections
  - E-monographs
  - Virtual labs
  - Community engagement
  - Indigenous knowledge
  - Dynamic State of Environment
- Increase our support for Indigenous participation in biodiversity infrastructure and knowledge management (by Indigenous communities).
  - Support dynamic environmental monitoring and reporting capabilities (e.g. a dynamic State of the Environment).
  - Collaborate to streamline data contribution and access across NCRIS facilities.



Chromosome

Chrom. No. 49: 108 (1923)

View Chromosome in the context

hybridizes with A. decurrens and occasionally with A. oleobata. A. colthamii, A. pubescens, A. spectabilis and A. ... A. decurrens is referred to as A. ...

... in Proc. Linn. Soc. New South Wales 82: 442-444 (1923). A registered cultivar, 'Paragon', characterized by its ...

... cultivated in parks, gardens and on roadsides, both for its foliage and floral display. It is fast growing, frost resistant, ...

... Further information on the biological and ecological features, and the utilisation potential, of this species is given in ...

...

...

...

...

...

...

...

...

...

...

...

...

...

...

...

...

...

...

...

...

...

...

...

...

...

...

...

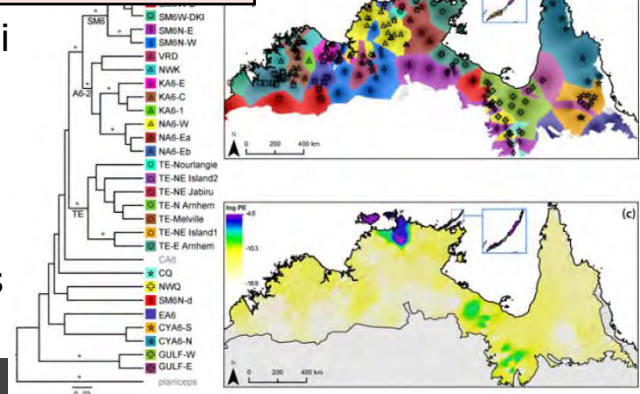
...

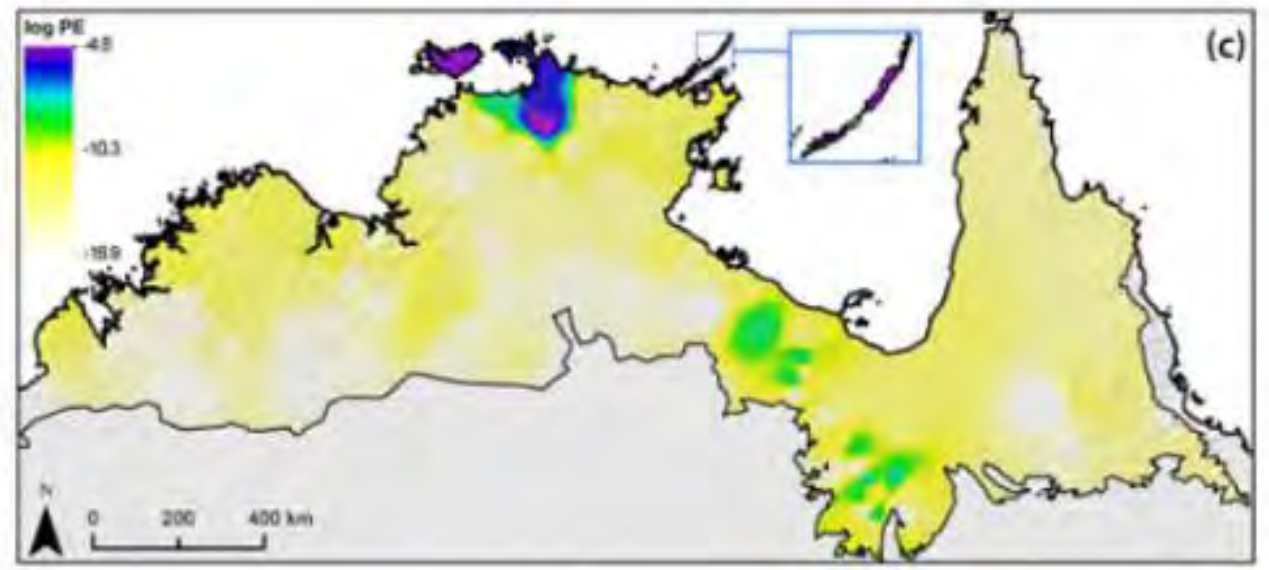
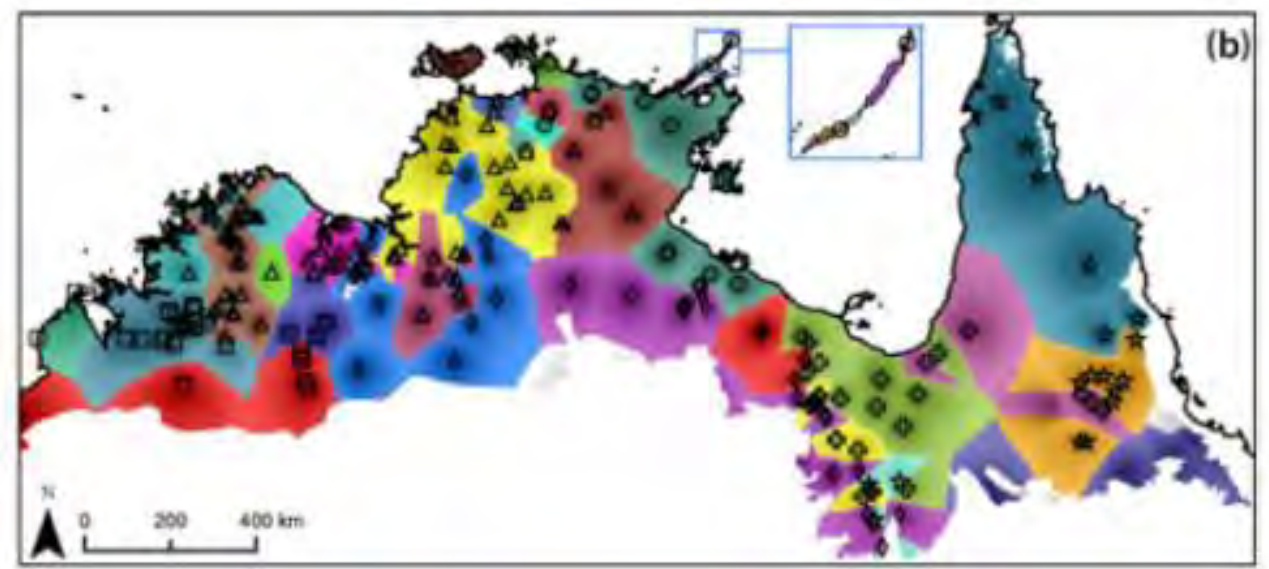
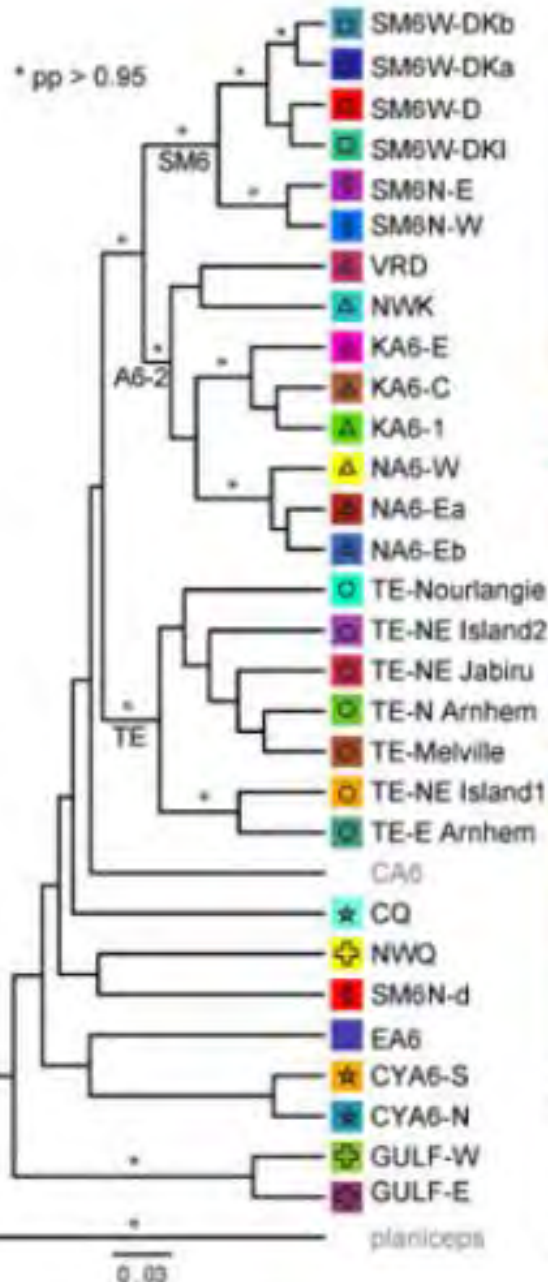
...

...

...

...







# ALA – moving forward

## In the next 5 years we will:

- Trait data
  - Genomic information
  - Virtual natural history collections
  - E-monographs
  - Virtual labs
  - Community engagement
  - Indigenous knowledge
  - Dynamic State of Environment
- Increase our support for Indigenous participation in biodiversity infrastructure and knowledge management (by Indigenous communities).
  - Support dynamic environmental monitoring and reporting capabilities (e.g. a dynamic State of the Environment).
  - Collaborate to streamline data contribution and access across NCRIS facilities.



Chromosome

Chrom. No. 49: 108 (1923)

View Chromosome in the context

hybridizes with A. decurrens and occasionally with A. oleobata. A. colthamii, A. pubescens, A. spectabilis and A. ... A. decurrens is referred to as A. ...

... in Proc. Linn. Soc. New South Wales 82: 442-444 (1923). A registered cultivar, 'Paragon', characterized by its ...

... cultivated in parks, gardens and on roadsides, both for its foliage and floral display. It is fast growing, frost resistant, ...

... Further information on the biological and ecological features, and the utilisation potential, of this species is given in ...

...

...

...

...

...

...

...

...

...

...

...

...

...

...

...

...

...

...

...

...

...

...

...

...

...

...

...

...

...

...

...

...



# ALA – moving forward

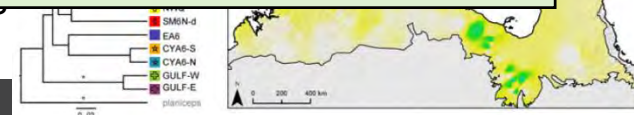
We will have a better chance of achieving this vision through:

- working together
- sharing where possible
- going to funding agencies with a single voice

And GBIF is a platform for helping us to get there.

Contribute to streamlining data contribution and access across NCRIS facilities.

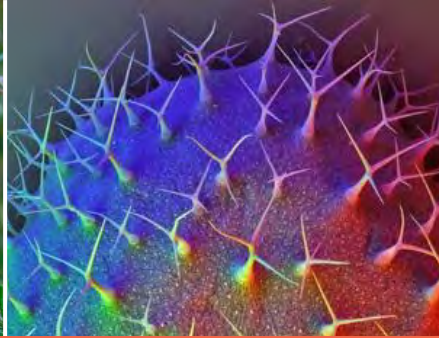
For online access to Australia's biodiversity information



What do you need to “thrive” in the data-rich research world of the next 10 years?

## Create a culture of sharing, collaboration and connectivity

- open/shared data
- open/shared access
- open/shared infrastructure
- open/shared web services
- open/shared source code
- open/shared work flows
- **open/shared vision, values and culture**



The Atlas of Living Australia

[www.ala.org.au](http://www.ala.org.au)

It is amazing what you can accomplish if you do not care who gets the credit.

Harry S. Truman



[www.ala.org.au](http://www.ala.org.au)

**NCRIS**  
National Research  
Infrastructure for Australia  

---

An Australian Government Initiative