



# Intelligent S/4HANA

## Automating Finance with SAP Leonardo Machine Learning

Kevin Lee, Director, Product Management, Digital Core ML  
February 2019 | CUSTOMER

# Legal disclaimer

The information in this presentation is confidential and proprietary to SAP and may not be disclosed without the permission of SAP. This presentation is not subject to your license agreement or any other service or subscription agreement with SAP. SAP has no obligation to pursue any course of business outlined in this document or any related presentation, or to develop or release any functionality mentioned therein. This document, or any related presentation, and SAP's strategy and possible future developments, products, and platforms, directions, and functionality are all subject to change and may be changed by SAP at any time for any reason without notice. The information in this document is not a commitment, promise, or legal obligation to deliver any material, code, or functionality. This document is provided without a warranty of any kind, either express or implied, including but not limited to the implied warranties of merchantability, fitness for a particular purpose, or noninfringement. This document is for informational purposes and may not be incorporated into a contract. SAP assumes no responsibility for errors or omissions in this document, except if such damages were caused by SAP's willful misconduct or gross negligence.

All forward-looking statements are subject to various risks and uncertainties that could cause actual results to differ materially from expectations. Readers are cautioned not to place undue reliance on these forward-looking statements, which speak only as of their dates, and they should not be relied upon in making purchasing decisions.

For all recent and planned innovations, potential data protection and privacy features include simplified deletion of personal data, reporting of personal data to an identified data subject, restricted access to personal data, masking of personal data, read access logging to special categories of personal data, change logging of personal data, and consent management mechanisms.

# What happens when we make a car “intelligent”?

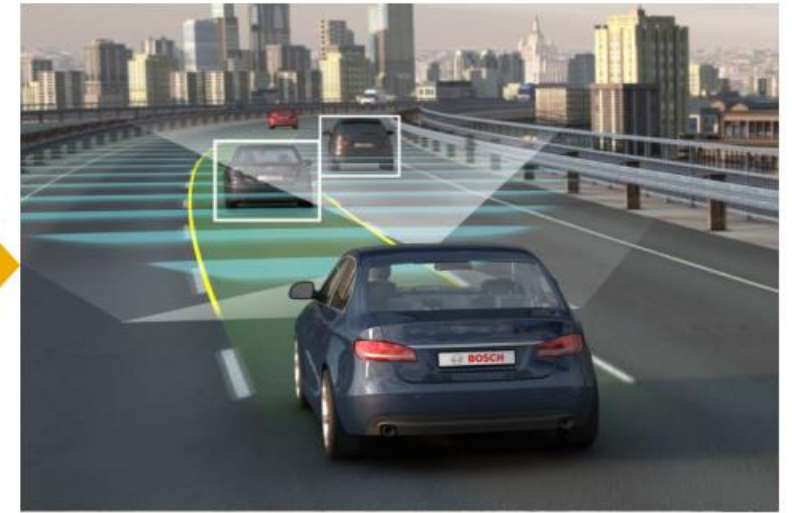
## Traditional



## Electric



## Autonomous



**Tomorrow vehicles will still get us from point A to point B...**

What happens when we make a car 'intelligent'...?

**What does the car know about its own environment?**

**What does a car need to do its job?**

**How does the car respond to changes around it?**

# What happens when we make a car 'intelligent'...?

## Today

### Visibility

- Mirrors and horns
- Dials for miles, MPH, fuel and fluid levels, temperature, etc.

### Focus

- Combustion engine: 2K moving parts
- Steering wheel, dashboard, gearshift
- Driving occupies avg. 45 min per day

### Agility

- 2.0 sec to react, press brakes
- Traffic jams, accidents, weather
- Parked 95% of the time

# What happens when we make a car 'intelligent' ...?

## Today

## Tomorrow

### Visibility

- Mirrors and horns
- Dials for miles, MPH, fuel and fluid levels, temperature, etc.

- Cameras, radar/lidar, GPS, M2M
- Sensors record where/when/how you drive (~2TBs of data daily)

### Focus

- Combustion engine: 2K moving parts
- Steering wheel, dashboard, gearshift
- Driving occupies avg. 45 min per day

- Electric engine: 18 moving parts
- Space for bed, TV, exercise, etc.
- Time for productive tasks

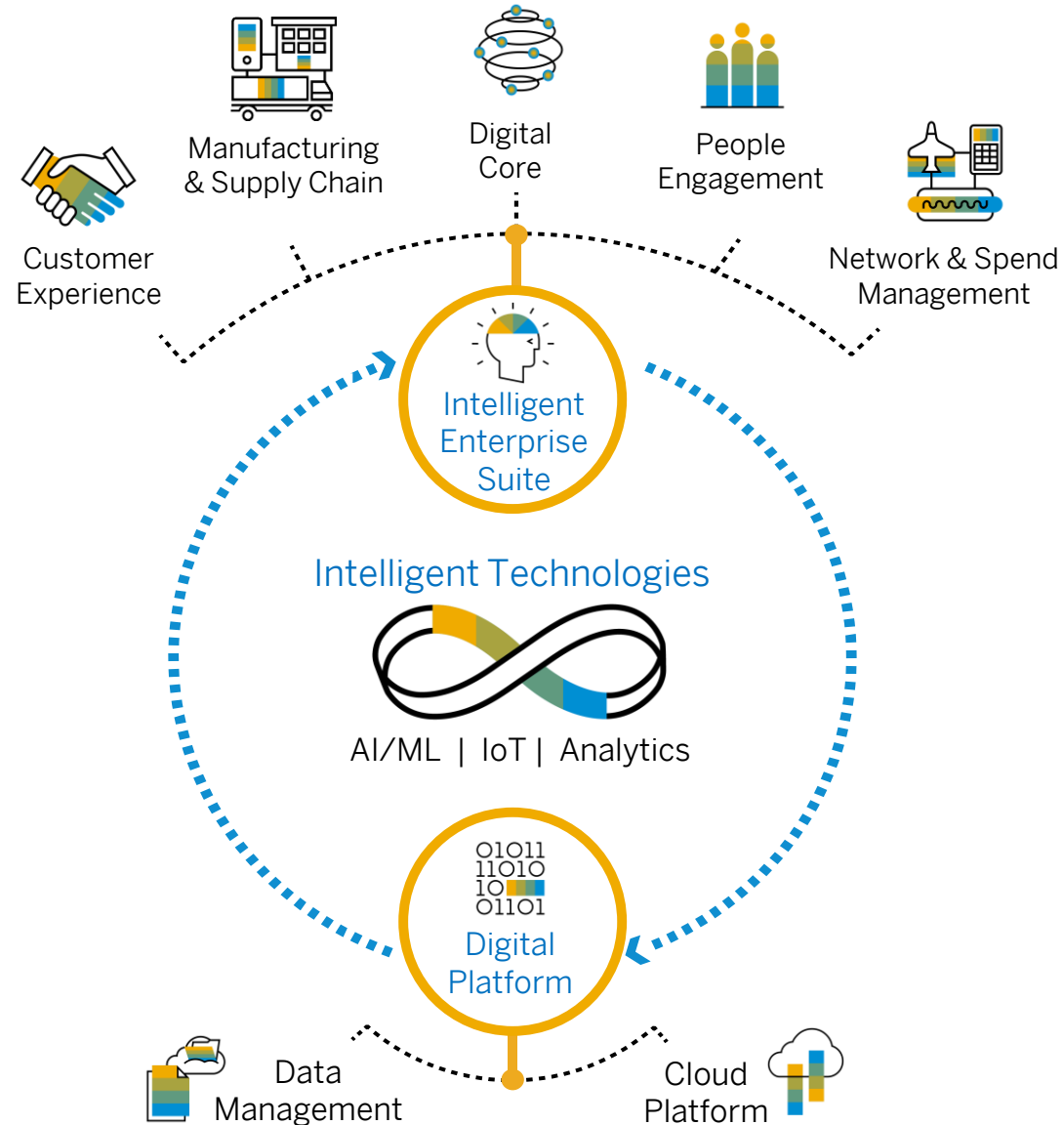
### Agility

- 2.0 sec to react, press brakes
- Traffic jams, accidents, weather
- Parked 95% of the time

- 0.3 secs to compute, apply breaks
- Swarm optimization and safety
- Shared ownership; no more garages

# SAP Strategy – Deliver the Intelligent Enterprise

THE INTELLIGENT  
ENTERPRISE features 3  
KEY COMPONENTS:

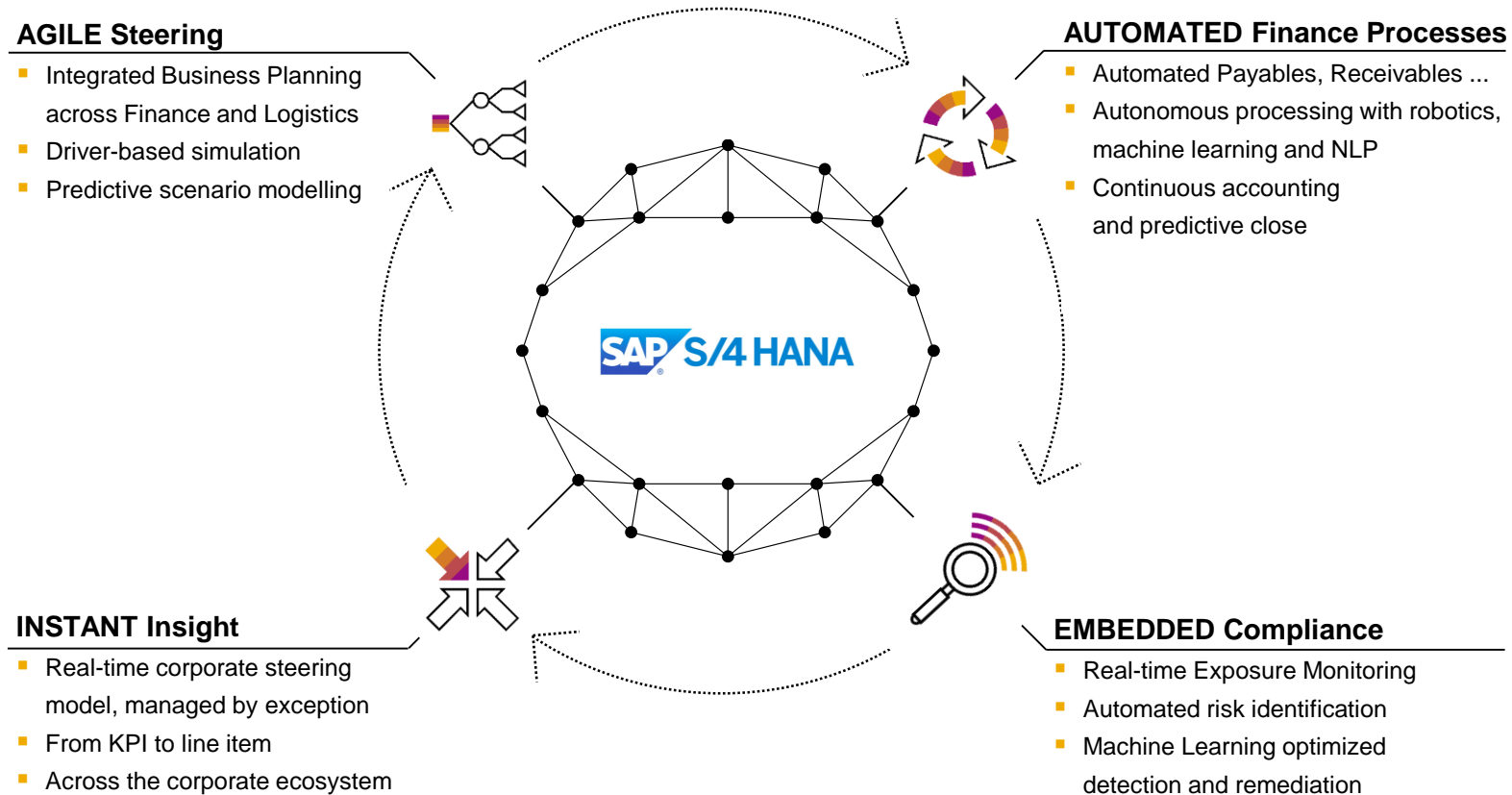


1 Intelligent Enterprise Suite

2 Intelligent Technologies

3 Digital Platform

# The Intelligent Enterprise Suite



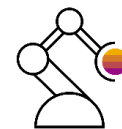
**ENABLED** through  
**SAP Leonardo**



**Blockchain**



**Machine Learning**



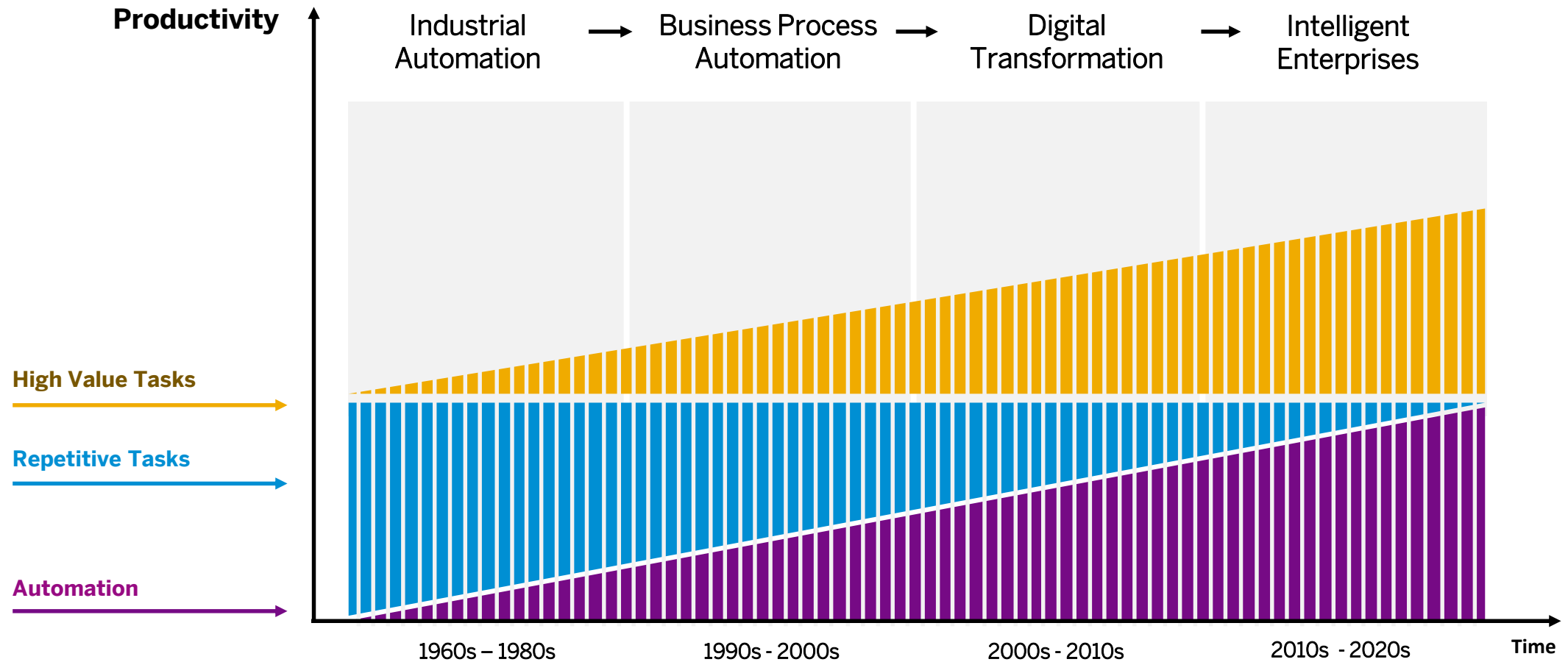
**RPA**



**Digital Assistants**



# Intelligent enterprises elevate employees to focus on **Higher-Value Tasks**



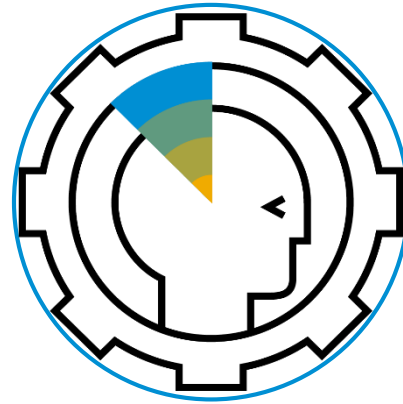
# Comparing approaches

Machine Learning helps where static rules do not suffice anymore



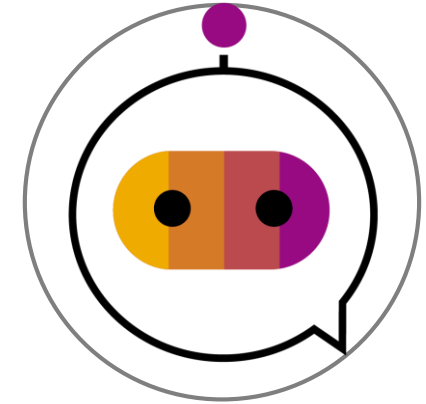
## Rule engines

Engines pre-loaded with highly specific process knowledge enable **rule-based automation**



## Machine learning

Machine Learning identifies hidden patterns in knowledge intensive processes and learns from the data **without being explicitly programmed**



## Robotic process automation

Robotics Process Automation helps to run repetitive, **rule-based** UI-focused tasks and bridges temporary gaps

# What is Machine Learning?

Chihuahua or  
Muffin?

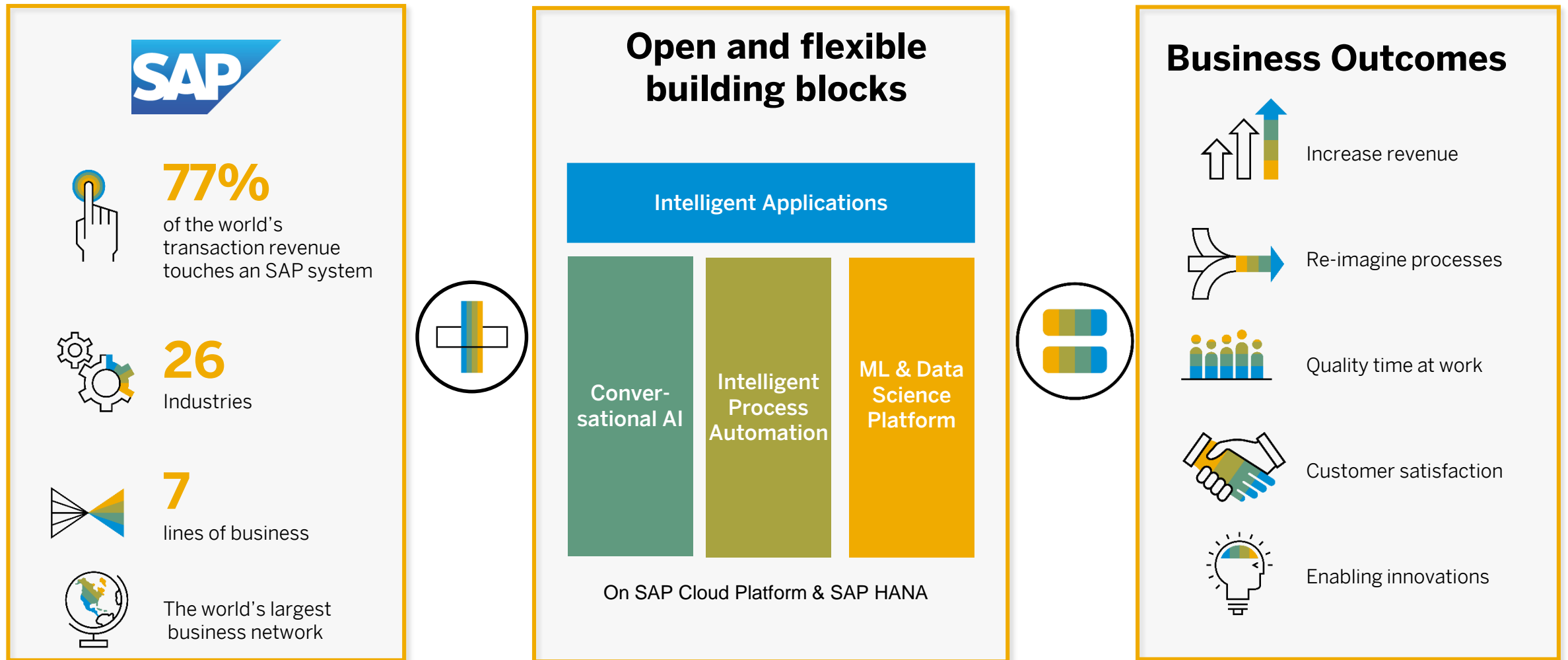


# What is Machine Learning?

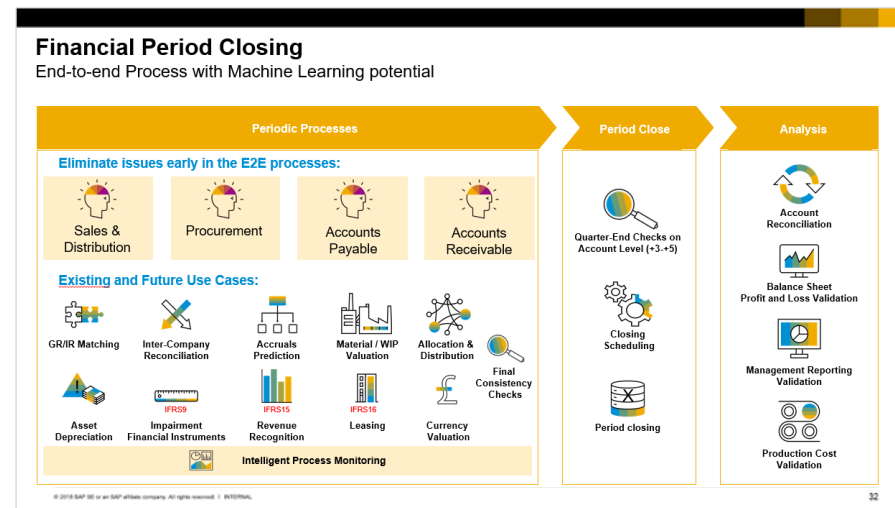
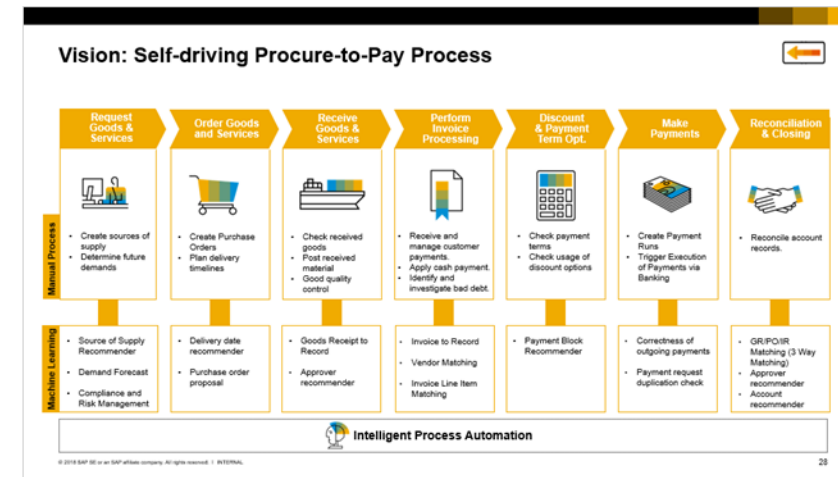
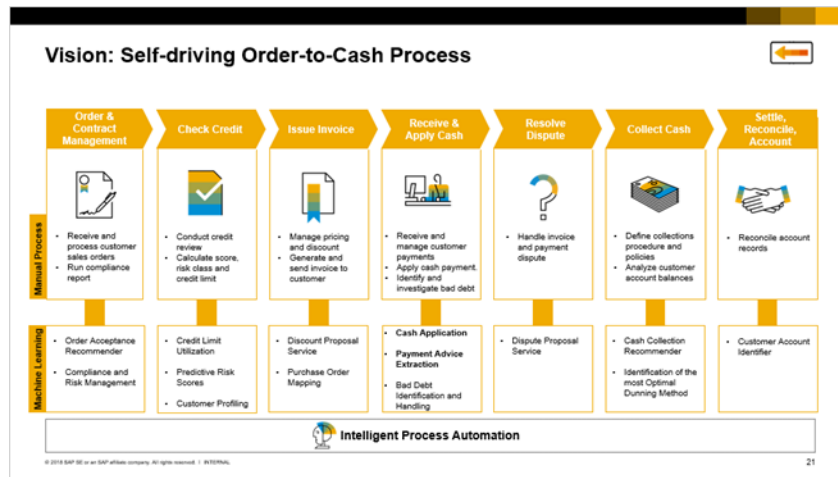
Sheepdog or  
Mop?



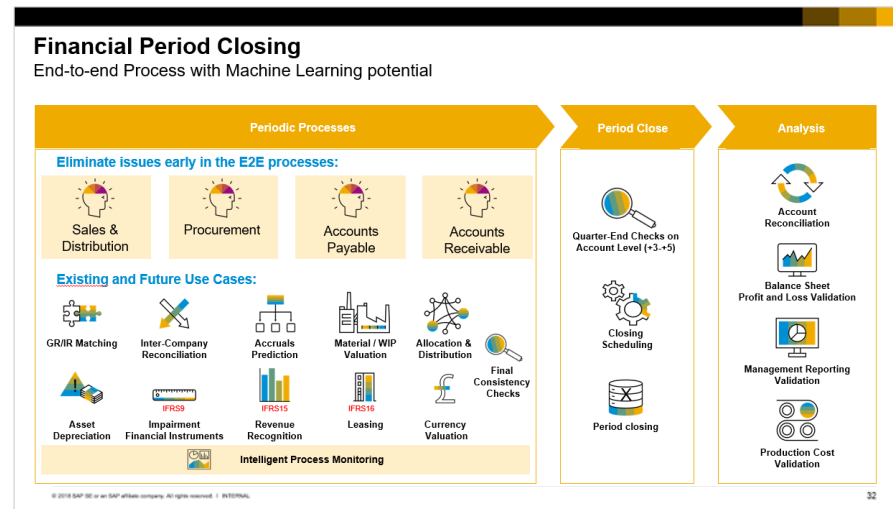
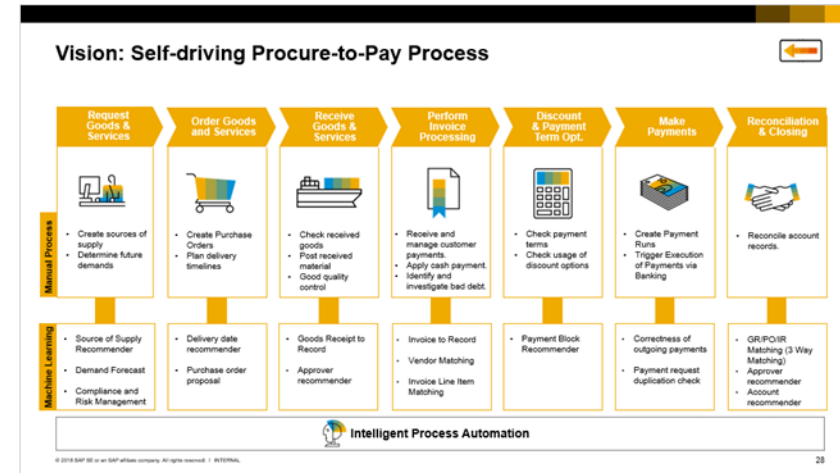
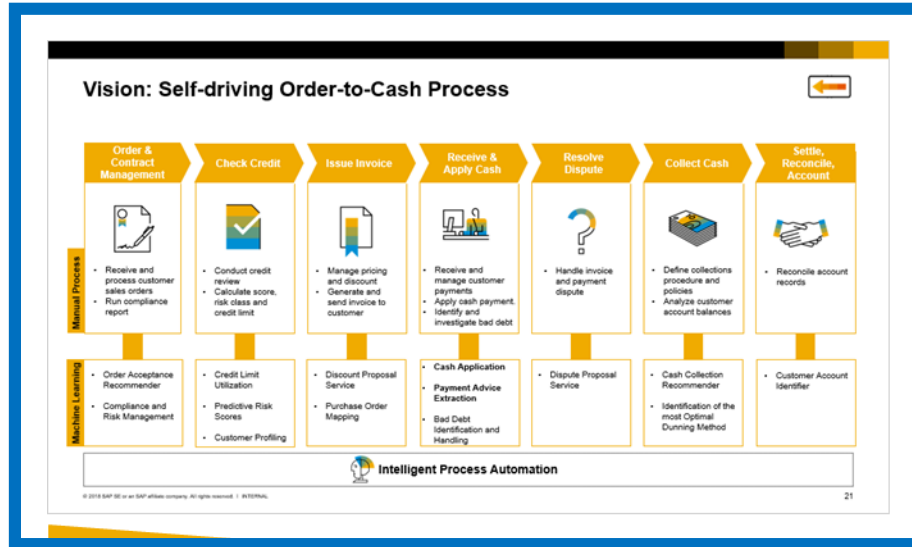
# How SAP Leonardo ML helps to deliver the Intelligent Enterprise



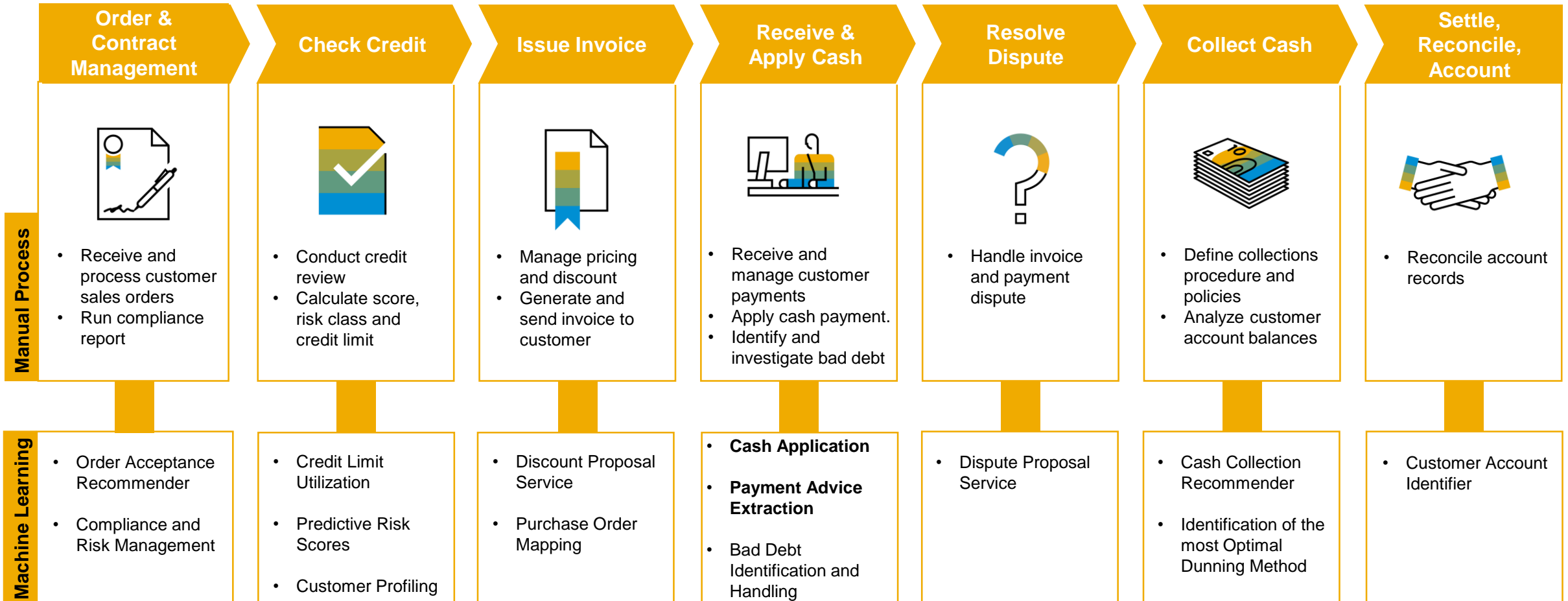
# S/4 Finance Vision: Self-driving E2E Processes for O2C, P2P and Closing



# S/4 Finance Vision: Self-driving E2E Processes for O2C, P2P and Closing



# Vision: Self-driving Order-to-Cash Process



**Intelligent Process Automation**



# Example: SAP Cash Application (Payment Advice Extraction)



The screenshot displays the SAP 'Manage Payment Advices' interface. The main window title is 'Manage Payment Advices'. The left sidebar contains filters for 'Standard' and 'Editing Status' (set to 'All'). Below the filters, there are input fields for 'Company Code', 'Customer', and 'Created By'. A 'Go' button is present. The main content area is titled 'Payment Advice Draft' and has tabs for 'General Information', 'Payment Advice Items', 'Processed Document', and 'Attachments'. The 'Payment Advice Items' tab is active, showing a table with columns for 'Document', 'Document Date', and 'Payment amount'. Below this, the 'Processed Document' tab is active, showing a preview of a payment advice document for 'High Ride Inc.' with a 'Payment Advice' summary box. At the bottom right, a 'Draft saved' notification and 'Confirm and Next' button are visible.

Document	Document Date	Payment amount
<input type="checkbox"/> 1800001251	10/26/2017	2,000.00 USD
<input type="checkbox"/> 1800001252	10/26/2017	500.00 USD

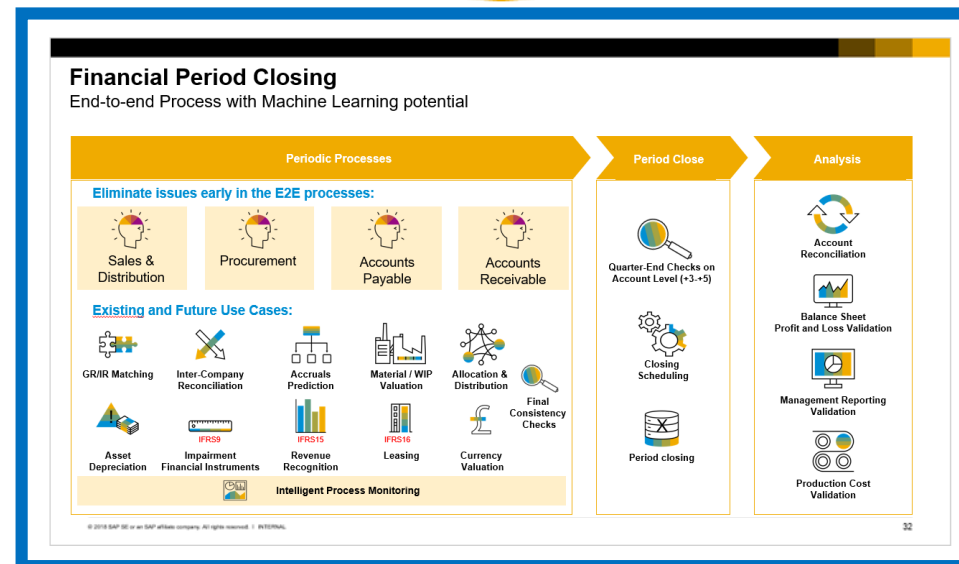
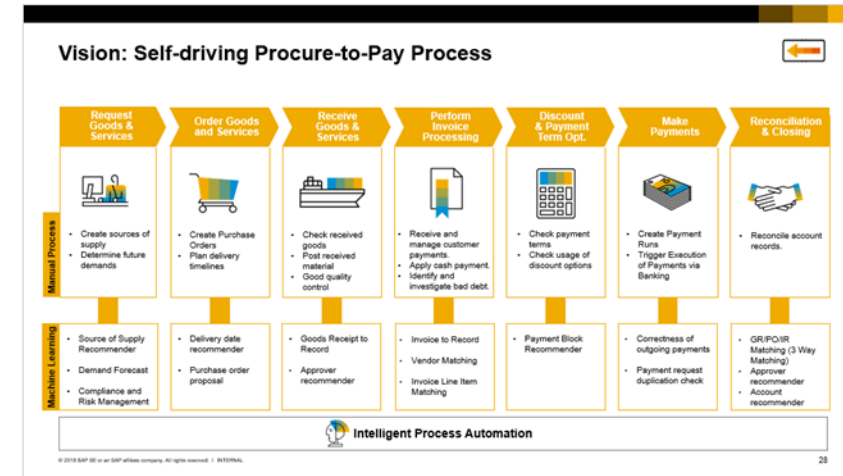
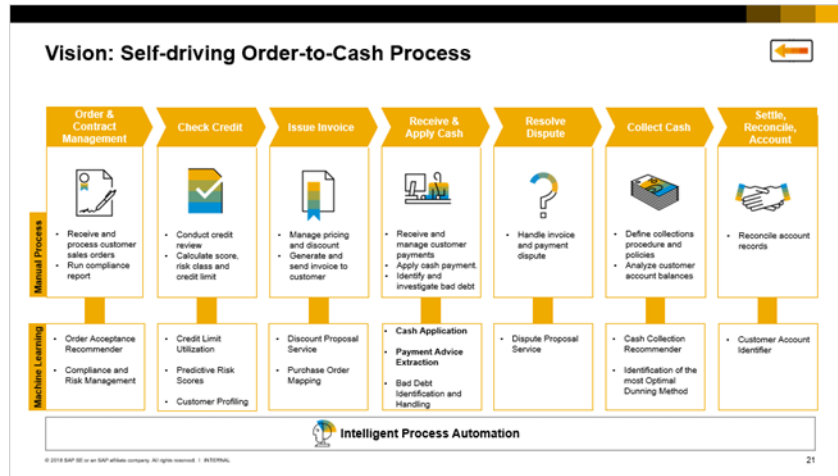
**High Ride Inc.**  
Fairmount St - 67208-2915 Wichita  
Beckman Trommler  
CA 94304-1355 Palo Alto  
Dear Creek 3475

**Payment Advice**  
Document / Date  
200087928 / 15/01/2018

Draft saved **Confirm and Next** Cancel

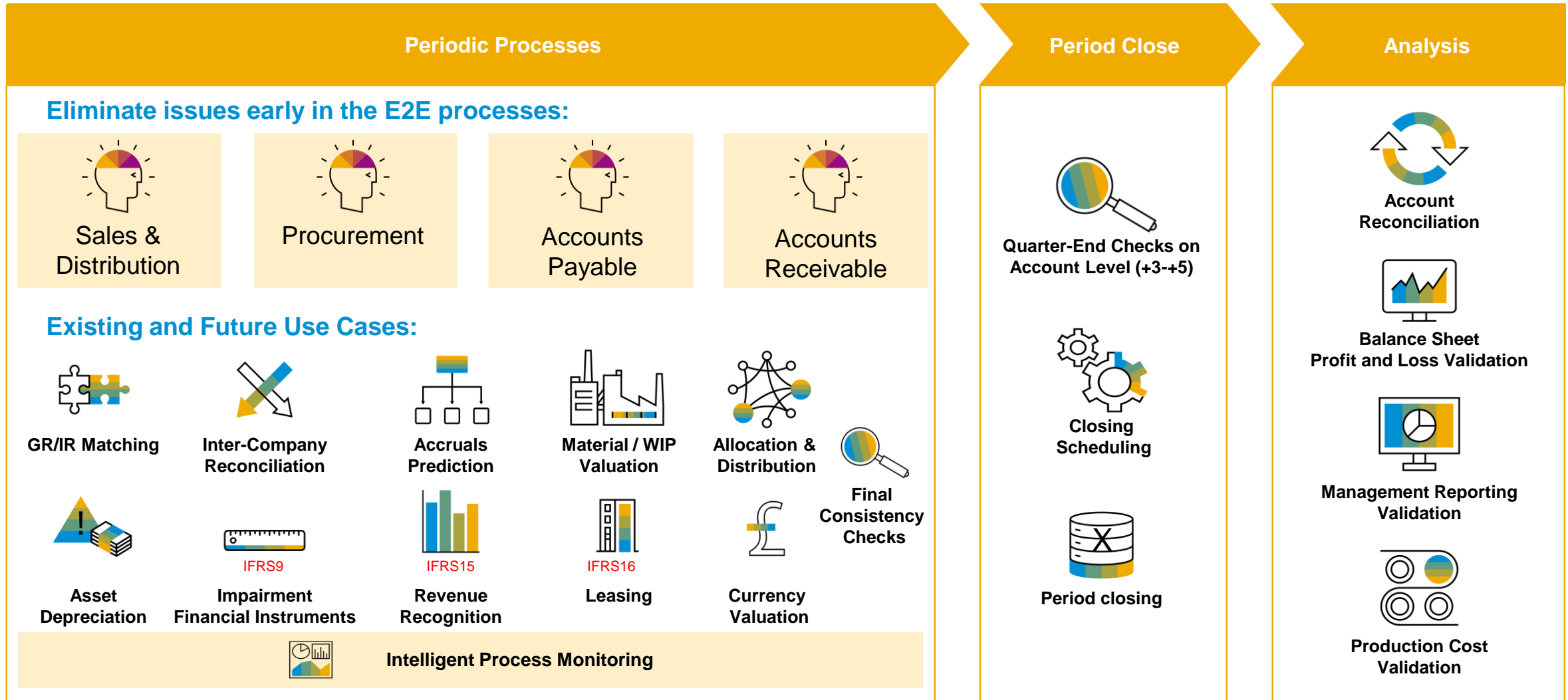


# S/4 Finance Vision: Self-driving E2E Processes for O2C, P2P and Closing

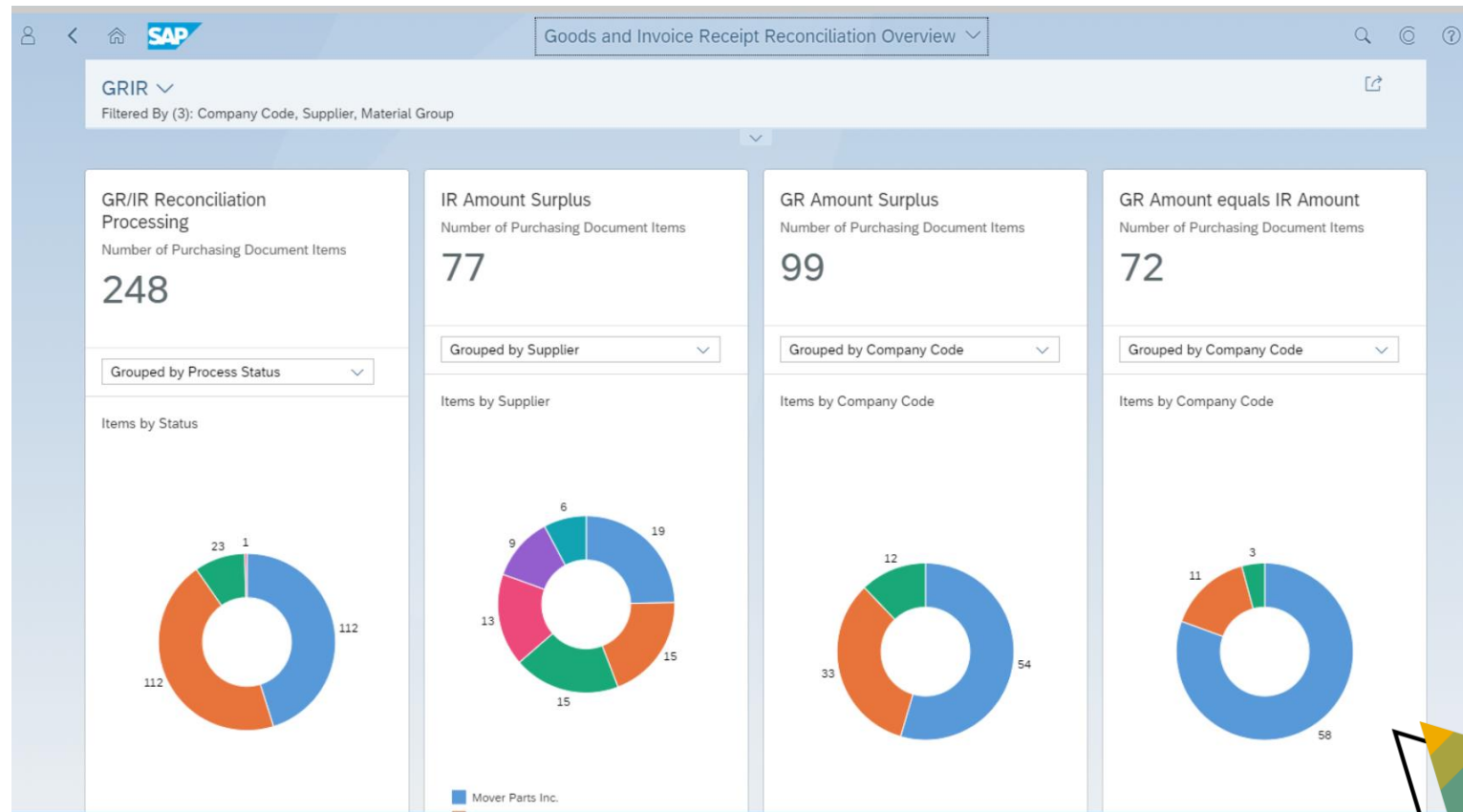


# Financial Period Closing

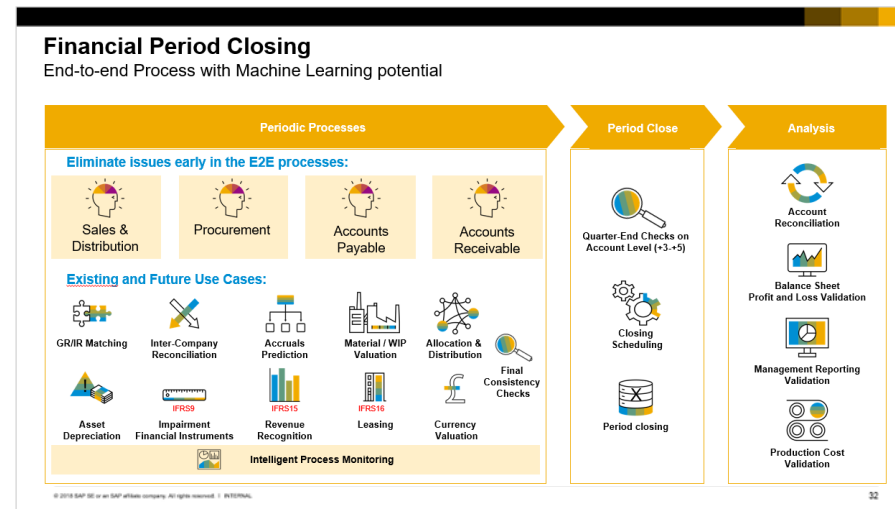
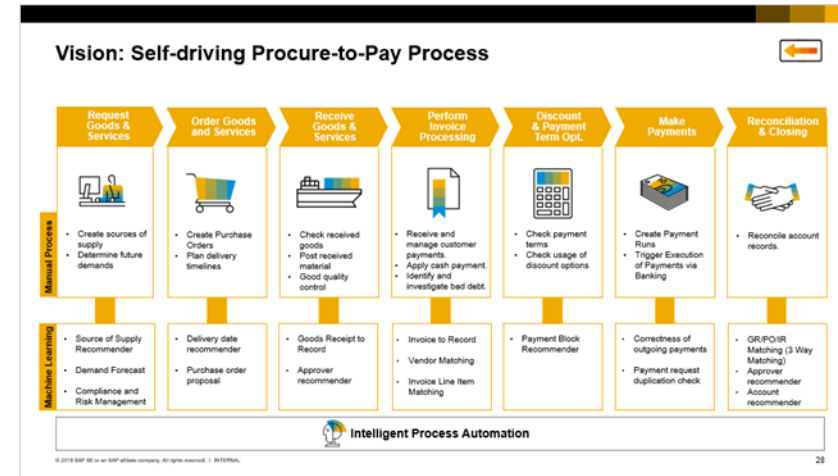
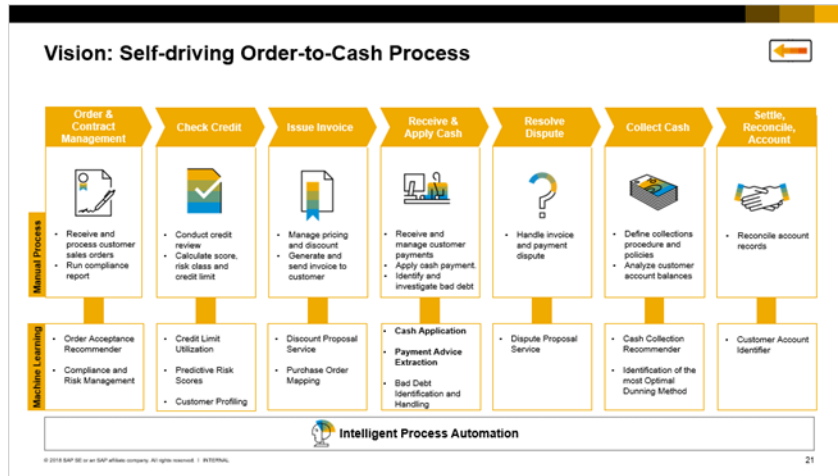
End-to-end Process with Machine Learning potential



# Backoffice Automation with Goods Receipt / Invoice Receipt Reconciliation



# S/4 Finance Vision: Self-driving E2E Processes for O2C, P2P and Closing



# SAP Leonardo intelligent applications for SAP S/4HANA

## SAP Co-Pilot

### SAP Co-Pilot



One digital assistant with one personality across all products and solutions, industries and LoBs



#### Business Context Awareness

Understanding the business context, and pro-actively suggesting solutions using predictive functionality



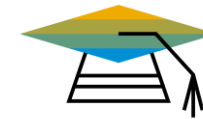
#### Conversational (multi-modal) UI

Conversational UI using Natural Language Processing functionality with a focus on the next-gen UX to create a human-like experience



#### Cross Applications

Allows seamless transition across platforms; start a task on a mobile device and continue later, on a desktop or vice versa



#### Self Learning

Using machine learning functionality to gain knowledge based on historic data, experience, and take action in response to new or unforeseen events



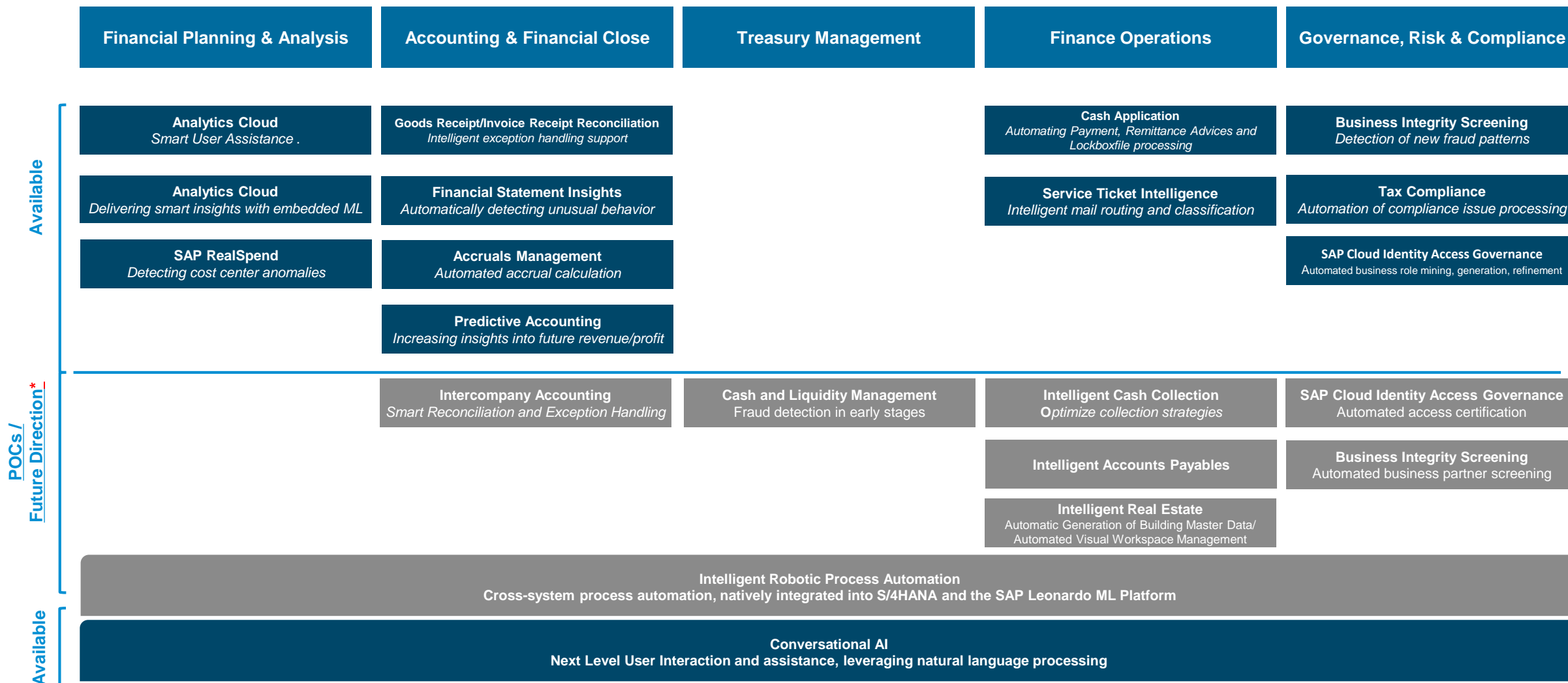
#### Simple Access to Enterprise AI Platform

Integration to SAP and non-SAP solutions; simple access to natural language processing and machine learning functionality via APIs

# Example: SAP CoPilot



# Intelligent Finance & Risk solutions





# Summary



- The **Intelligent Enterprise** leverages emerging technologies such as AI/ML, IoT, and Analytics to **enable the workforce to focus on higher value outcomes.**
- The **Finance** space **is at the core** of the Intelligent Enterprise strategy with a large number of intelligent finance cases, being already available today.
- We have a clear focus to **generate value** for our customers **along the E2E processes.**
- **Further use cases will emerge** in the near future.

# Thank you.



**Kevin Lee**  
Director, Product Management  
Digital Core ML

**SAP Asia Pte.**

M +65 9648 4823  
[kevin.lee02@sap.com](mailto:kevin.lee02@sap.com)

