



Cerberus FIT FC360 – Planning Tool

siemens.com/cerberus-fit

Smart Infrastructure intelligently connects energy systems, buildings and industries to adapt and evolve the way we live and work.

We work together with customers and partners to create an ecosystem that intuitively responds to the needs of people and helps customers to better use resources.

It helps our customers to thrive, communities to progress and supports sustainable development.

Creating environments that care.
siemens.com/smart-infrastructure

Published by
Siemens Switzerland Ltd

Smart Infrastructure
Global Headquarters
Therstrasse 1a
6300 Zug
Switzerland
Tel +41 58 724 24 24

**For the U.S. published by
Siemens Industry Inc.**
100 Technology Drive
Alpharetta, GA 30005
United States

Article no. SI 0195_EN (Status 12/2020)

Subject to changes and errors. The information given in this document only contains general descriptions and/or performance features which may not always specifically reflect those described, or which may undergo modification in the course of further development of the products. The requested performance features are binding only when they are expressly agreed upon in the concluded contract.
© Siemens 2020

Cerberus FIT FC360 – addressable fire control panels

1-loop panels

- 1 loop or 2 stubs
- Number of addresses: max. 126



Fire control panel (1L, Compact) FC361-ZZ
– Housing: 402x372x132 mm
– Batteries: max. 2x 12 V, 12 Ah
Order no.: S54433-C112-A1

Fire control panel (1L, Comfort) FC361-ZA
– Housing: 402x372x211 mm
– Batteries: max. 2x 12 V, 25 Ah
Order no.: S54433-C111-A1

2-loop panels

- 2 loop or 4 stubs
- Number of addresses: max. 256



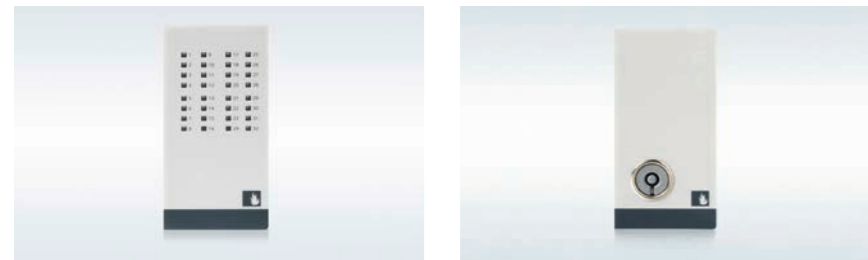
Fire control panel (2L, Compact) FC362-ZZ
– Housing: 402x372x132 mm
– Batteries: max. 2x 12 V, 12 Ah
Order no.: S54433-C119-A1

Fire control panel (2L, Comfort) FC362-ZA
– Housing: 402x372x211 mm
– Batteries: max. 2x 12 V, 25 Ah
Order no.: S54433-C120-A1

Shared properties

- Total current capacity: max. 2.5 A
- 4 programmable inputs/outputs (DC 24 V/max. 0.1 A and 0.2 A in total)
- 3 programmable potential-free relay outputs (DC 60 V/max. 2.0 A)
- 2 collective sounder circuits (DC 24 V/max. 0.5 A)
- Auxiliary power output (DC 24 V/max. 0.2 A)

Options

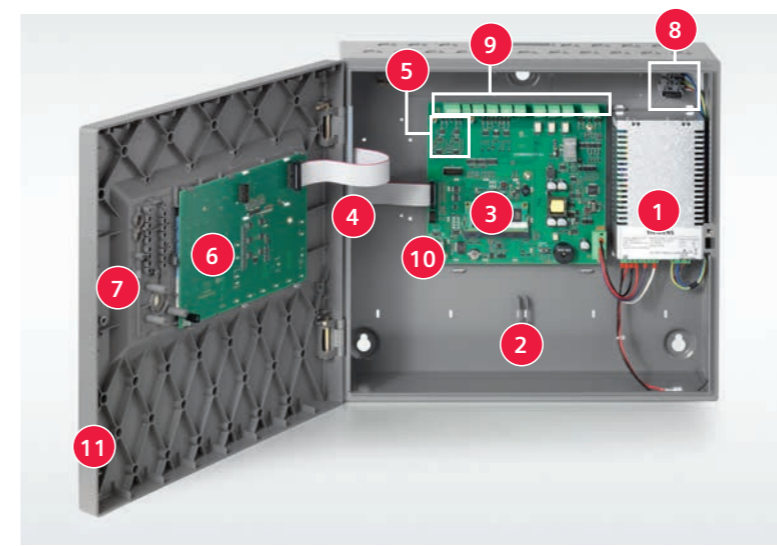


LED indicator (32 zones) FTO3603-Z1
– Visual fire zone indication
– Up to 32 fire zones
Order no.: S54433-B118-A1

Key switch (Nordic) FCA3603-Z1
– Special key switch (Nordic) to provide level 2 (user) access on panel
Order no.: S54433-N115-A1

Control unit

Hardware components



Legend

- | | |
|---|---|
| 1 Power supply | 8 Mains fuse |
| 2 Space for batteries | 9 Main board connectors:
– 2 collective sounder circuits
– 24 V auxiliary outputs
– 4 programmable inputs/outputs
– 3 programmable relay outputs
– Loop connector |
| 3 Mainboard | 10 Ethernet connector |
| 4 Output card (4M) (optional) | 11 Detachable door |
| 5 Space for RS232/485 module (optional) | |
| 6 User interface (PMI) | |
| 7 Space for options:
– Evacuation module (NL)
– LED indicator (32 zones)
– Key switch/key switch (Nordic) | |



Output card (4M) FCA3602-Z1
– 4 configurable monitored outputs (DC 24 V)
– Output current per output: 1.0 A
– Max. current of output card: 2.0 A
Order no.: S54433-A114-A1

RS232 module (isolated) FCA2001-A1
– Communication module for peripheral devices with RS232 interface (e.g. event printer DL3750+)
Order no.: A5Q00005327

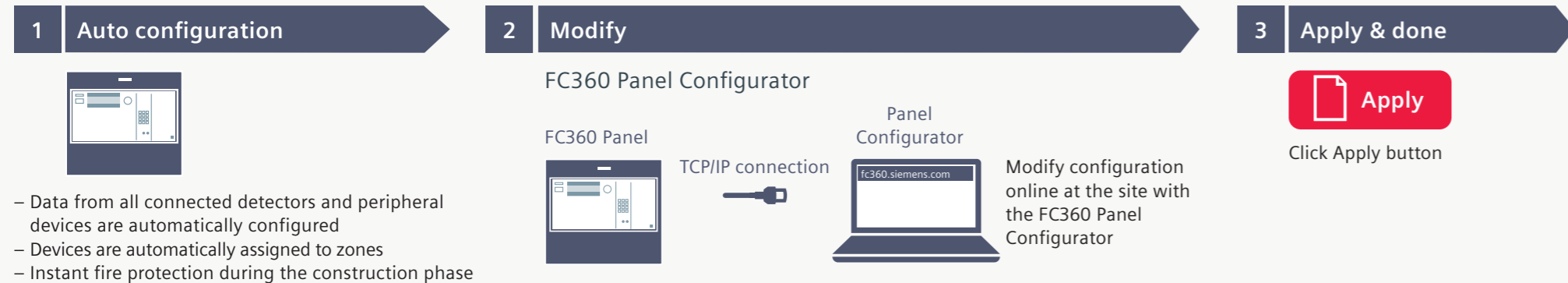
RS485 module (isolated) FCA2002-A1
– Communication module for peripheral devices with RS485 interface
Order no.: A5Q00009923

Note: Unit can be powered from the integral power supply or from an additional external power supply.

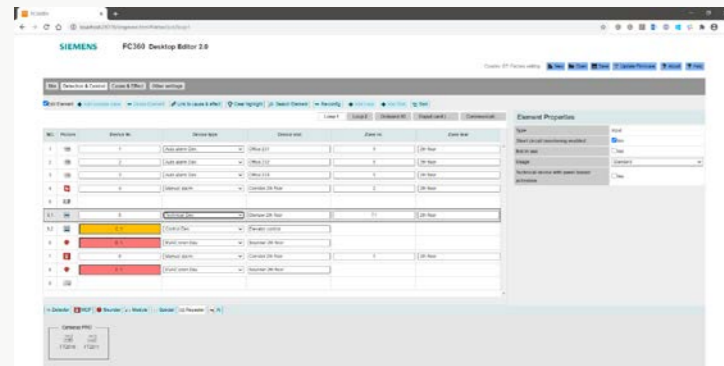
FC360 Panel Configurator (online)

Panel configuration in three easy steps.

The online tool is used to configure the panel on site. The panel has an integrated Web server that can be accessed with a Web browser. No additional software is needed. The TCP/IP connection to the panel is established via the Web address fc360.siemens.com.

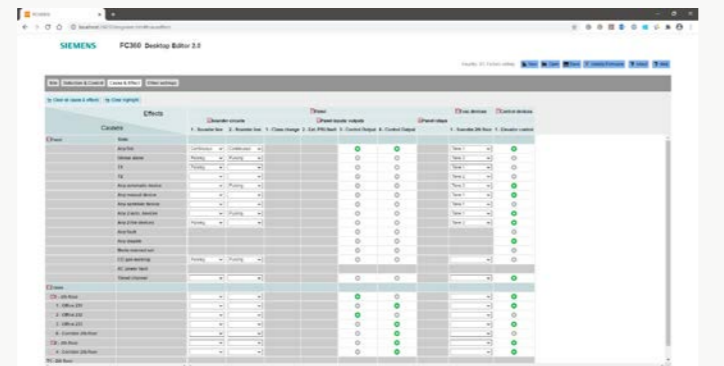


Detection and control view



The FC360 configuration tool is simple to understand and use. The connected devices are listed in a table in their order of wiring, allowing the user to easily visualize the devices as installed. Outputs and sounders can be assigned into one of 32 control or evacuation zones and an appropriate description text (e.g. "door release") can be added for more clarity.

Cause and effect matrix



Most systems require all alarming devices and control outputs to operate with any fire. This operation is available by default. Where more complex controls are required, the FC360's unique cause-and-effect matrix makes any required changes easy and logical.

FC360 Desktop Editor (offline)

The FC360 Desktop Editor is a tool for viewing the system's configuration offline as well as making text or cause-and-effect changes.

In addition, the tool provides installers with self-learning opportunities where they can create their own "virtual" system. This quickly builds solid expertise and experience and reduces training costs and effort.

Download the FC360 Desktop Editor



Alarming highlights

In the event of a fire it is essential to alert and evacuate people as fast as possible. A wide product portfolio range offers alarm devices for acoustic and optical alarming. All devices are loop powered and constantly monitored.

Sounder	Beacon								
<p>The sounder creates an acoustic alarm signal in case of an event. All devices offers a broad range of tone patterns.</p> <p>The acoustic perception is outstanding because all tones are synchronized.</p> <ul style="list-style-type: none"> – Certified for acoustic alarming according EN 54-3 – 3 different sound levels are selectable (minimum / medium / maximum) – 16 integrated tone patterns 	<p>Addressing two senses – an optical and an acoustical signal – speeds up the alert and evacuation process. We increase the awareness of the optical signal with a high flash intensity and a very short pulse length. The device has multiple options for brightness which can be adjusted according to the room size.</p> <ul style="list-style-type: none"> – Certified for optical alarming according EN 54-23 – Additional light intensity setting (supplementary optical indication) designed for system extensions or migration. <p>Wall devices</p> <p>Category W – wall mounting</p> <table border="0"> <tr> <td>● White LED</td> <td>● Red LED</td> </tr> <tr> <td>High: W-3.2-10</td> <td>High: W-2.8-8.8</td> </tr> <tr> <td>Mid: W-2.4-7.5</td> <td>Mid: W-2.4-7.5</td> </tr> <tr> <td>Low: O-2-6.2</td> <td>Low: O-2-6.2</td> </tr> </table> <p>O – Open category: Wall mounted, cubic coverage as category W</p>	● White LED	● Red LED	High: W-3.2-10	High: W-2.8-8.8	Mid: W-2.4-7.5	Mid: W-2.4-7.5	Low: O-2-6.2	Low: O-2-6.2
● White LED	● Red LED								
High: W-3.2-10	High: W-2.8-8.8								
Mid: W-2.4-7.5	Mid: W-2.4-7.5								
Low: O-2-6.2	Low: O-2-6.2								
Voice	<p>Ceiling devices</p> <p>Category C – ceiling mounting</p> <table border="0"> <tr> <td>● White LED</td> <td>● Red LED</td> </tr> <tr> <td>High: O-4-15</td> <td>High: C-3-12</td> </tr> <tr> <td>Mid: C-3-12</td> <td>Mid: C-3-10</td> </tr> <tr> <td>Low: O-2.5-6.5</td> <td>Low: O-2.5-6.5</td> </tr> </table> <p>O – Open category: Ceiling mounted, cylindrical coverage as category C</p>	● White LED	● Red LED	High: O-4-15	High: C-3-12	Mid: C-3-12	Mid: C-3-10	Low: O-2.5-6.5	Low: O-2.5-6.5
● White LED	● Red LED								
High: O-4-15	High: C-3-12								
Mid: C-3-12	Mid: C-3-10								
Low: O-2.5-6.5	Low: O-2.5-6.5								

Cerberus FIT FC360 – compatible C-NET devices

Fire control panel FC361-ZZ
Order no.: S54433-C112-A1

Fire control panel FC361-ZA
Order no.: S54433-C111-A1

Fire control panel FC362-ZZ
Order no.: S54433-C119-A1

Fire control panel FC362-ZA
Order no.: S54433-C120-A1

Fire detectors

Detector base DB722
– Screwless terminals
– Integrated rubber seal
Order no.: S54319-F19-A1

Multi-sensor fire detector OH360
Combined optical and thermal sensors, one parameter set
Order no.: S54310-F102-A1

Smoke detector OP360
One parameter set
Order no.: S54310-F101-A1

Heat detector HI360 (max + RoR)
Two parameter sets (rate-of-rise and static)
Order no.: S54310-F104-A1

Flame detector base FDB291
Order no.: A5Q00003310

Linear smoke detector base FDLB291
Order no.: A5Q00003941

Flame detector FDF241-9
– For inside and outside applications
– Three infrared sensors
Order no.: A5Q00003006

Linear smoke detector FDL241-9
Order no.: A5Q00002298

Long-distance reflector DLR1191 (Prism)
For distances between 20 and 100 meters
Order no.: BPZ:4787710001

Zone module FDCI723
1 collector or conventional detector line

Power supply FP120
Order no.: S54400-S122-A1

Housing FDCI221 IP65
Order no.: S54312-F3-A1

Shared properties FT2010 and FT2011:
– Backlit display with plain text (6 lines of 40 characters each)
– Power supply and communication (individual addressed) via C-NET, additional DC 24 V feed possible
– 207x282x79 mm (HxWxD)
– Max. 3 FT2010/FT2011 per FC361

Floor repeater terminal FT2010-A1
Order no.: A5Q00014104

Floor repeater display FT2011-A1
Order no.: A5Q00017706

Alarm indicator (addressable) FDAI221
Order no.: S54370-F10-A1

Detector base accessories

Detector base seal RS720
Order no.: S54319-F8-A1

Designation plate FDB2291
Order no.: A5Q00002621

Detector locking device LP720
Order no.: S54319-F9-A1

Base attachment BA720
Order no.: S54319-F20-A1

Base attachment wet BA721
Order no.: S54319-F29-A1

Detector heating FDBH291
Order no.: A5Q00004439

Protection cage DB21194
Order no.: BPZ:4677110001

Alarm indicator FDAI92
Order no.: S54370-F3-A1

Additional frame AI330
Order no.: BPZ:3169430001

Alarm indicator FDAI91
Order no.: S54370-F9-A1

Alarm indicator FDAI93
Order no.: S54370-F5-A1

C-NET

The C-NET is a modern, multi-purpose bus system. It allows rapid, fail-safe communication between the Cerberus FIT/PRO bus elements and the fire control panel.

Characteristics:

- Uses all cable types (shielded or unshielded)
- Integrates star-shaped cable networks without modifications to cable network
- Acoustic and visual signaling on the loop
- Up to 126 bus elements on one loop
- Cable lengths up to 3.3 km
- 2-wire loop
- Integrated isolator in every loop participant

Input/output module FDCI0361
– 1 monitored input (not invertible)
Relay outputs:
– 1 output
– Relay output DC 30 V/2 A rated
– Can be configured as monitored, but a separate DC 24 V power supply is required
Order no.: S54312-F102-A1

Input module FDCI361
– 1 monitored input (not invertible)
Order no.: S54312-F101-A1

Input/output module FDCI0221
– 1 monitored input (invertible)
Relay outputs:
– 1 output
– Relay output DC 30 V/2 A rated
– Can be configured as monitored, but a separate DC 24 V power supply is required
Order no.: S54312-F2-A1

Input module FDCI221
– 1 monitored input (invertible)
Order no.: S54312-F1-A1

Input/output module FDCI0222
– 4 monitored inputs
Relay outputs:
– 4 potential-free working/rest contacts
Contact loading:
– AC 250 V/4 A
– DC 30 V/4 A
Order no.: A5Q00002369

Input module FDCI222
– 4 monitored inputs
Order no.: A5Q00001984

Input/output module FDCI0224
With approval on VdS extinguishing interface
– 4 monitored inputs
Relay outputs:
– 4 potential-free working/rest contacts
Contact loading:
– AC 250 V/4 A
– DC 30 V/4 A
Order no.: A5Q00002369

Alarm equipment for audible and visible alarming

Sounder base DB5720
Sound level: 88 dBA/1 m
Order no.: S54319-F5-A1

Base (wall mounting) FDB226-R
Order no.: S54364-B1-A1

Base (wall mounting) FDB226-W
Order no.: S54364-B4-A1

Base deep (wall mounting, IP65) FDB227-R
Order no.: S54364-B3-A1

Base deep (wall mounting, IP65) FDB227-W
Order no.: S54364-B4-A1

Base (ceiling mounting) FDB228
Order no.: S54364-B5-A1

Base deep (ceiling mounting) FDB229
Order no.: S54364-B6-A1

Sounder FDS364-R
Housing red
Sound level: maximum only
Order no.: S54364-F101-A1

Voice sounder FDS225-R
Housing red
Order no.: S54364-F3-A1

Sounder FDS364-W
Housing white
Sound level: maximum only
Order no.: S54364-F102-A1

Sounder FDS224-R
Housing red
Order no.: S54364-F1-A1

Sounder FDS224-W
Housing white
Order no.: S54364-F2-A1

Sounder beacon FDS366-RR
Housing red / LED red
Sound level: maximum only
W-2.4-7.5
Order no.: S54364-F105-A1

Sounder beacon FDS366-RW
Housing red / LED white
Sound level: maximum only
W-2.4-7.5
Order no.: S54364-F106-A1

Sounder beacon FDS366-WR
Housing white / LED red
Sound level: maximum only
W-2.4-7.5
Order no.: S54364-F107-A1

Sounder beacon FDS366-WW
Housing white / LED white
Sound level: maximum only
W-2.4-7.5
Order no.: S54364-F108-A1

Standard voice messages

Voice sounder beacon FDS227-RR
Housing red / LED red
O-2.6.2 / W-2.4-7.5 / W-2.8-8.8
Order no.: S54364-F5-A1

Voice sounder beacon FDS227-RW
Housing red / LED white
O-2.6.2 / W-2.4-7.5 / W-3.2-10
Order no.: S54364-F6-A1

Voice sounder beacon FDS227-WR
Housing white / LED red
O-2.6.2 / W-2.4-7.5 / W-2.8-8.8
Order no.: S54364-F7-A1

Voice sounder beacon FDS227-WW
Housing white / LED white
O-2.6.2 / W-2.4-7.5 / W-3.2-10
Order no.: S54364-F8-A1

Customized voice messages

Voice sounder beacon FDS227-RR-C
Housing red / LED red
O-2.6.2 / W-2.4-7.5 / W-2.8-8.8
Order no.: S54364-F9-A2

Voice sounder beacon FDS227-RW-C
Housing red / LED white
O-2.6.2 / W-2.4-7.5 / W-3.2-10
Order no.: S54364-F10-A2

Voice sounder beacon FDS227-WR-C
Housing white / LED red
O-2.6.2 / W-2.4-7.5 / W-2.8-8.8
Order no.: S54364-F11-A2

Voice sounder beacon FDS227-WW-C
Housing white / LED white
O-2.6.2 / W-2.4-7.5 / W-3.2-10
Order no.: S54364-F12-A2

Mounting example

With detector
Detector base DB721
Fire detector

Without detector
Base (ceiling mounting) FDB228
Sounder beacon base FDSB226-WR
Blanking plate FDBZ298
Order no.: S54364-B8-A1

Conversion of voice message FDS5227
Service to convert custom audio message text
Order no.: L54364-Y1-A1

Manual call points and accessories

Manual call point FDM365-RP
Resettable, available in red, and can be used for flush mounting
Order no.: S54311-F111-A1

Manual call point FDM225
Standard, available in different colors
Order no.: A5Q00012020

Manual call point FDM225-RP
Resettable, available in red, and can be used for flush mounting
Order no.: A5Q00013436

Manual call point FDM226
Resettable and IP66, available in red
Order no.: A5Q00013435

Manual call point FDM231-RP
Standard, available in red
Order no.: S54311-F11-A1

Manual call point FDM224
IP44 or IP64, with direct alarm actuation, available in different colors
Order no.: S54311-B14-A1

Manual call point FDM223
IP44 or IP64, with indirect alarm actuation, available in different colors
Order no.: A5Q00009392

Manual call point FDM223
IP44 or IP64, with indirect alarm actuation, available in different colors
Order no.: A5Q00003087

Manual call point with resettable plastic element FDM365-RP
Order no.: S54311-F111-A1

Manual call point with resettable plastic element FDM225-RP
Order no.: A5Q00012020

Manual call point with resettable plastic element incl. back box FDM226-RP
Order no.: A5Q00013436

Manual call point complete
Order no.: S54311-F11-A1

Manual call point with resettable plastic element incl. key FDM225-RG
Order no.: A5Q00013434

Manual call point with glass plate incl. back box FDM226-RG
Order no.: A5Q00013435

Electronic switching unit FDM221
Order no.: A5Q00002451

Electronic switching unit FDM224
Order no.: A5Q00009392

Electronic switching unit FDM223
Order no.: A5Q00003087

Housings with glass and key (FDM224 and FDM223):
Housing red FDMH293-R
Order no.: A5Q00004023

More color options (yellow, green, blue and orange) are available
Housing red FDMH297-R
Order no.: S54311-B7-A1

Accessories:
Back box FDMH295-R
Order no.: A5Q00013437

Back box with holes and grommet FDMH295-S
Order no.: A5Q00013438

Protective cover FDMC295
Order no.: A5Q00013440

Protective cover FDMC291
Order no.: A5Q0001644

Back box with holes and grommet FDMH295-S
Order no.: A5Q00013438

Protective cover FDMC295
Order no.: A5Q00013440

Accessories:
Protective cover FDMC295
Order no.: A5Q00013440

Accessories:
Back box FDMH295-R
Order no.: A5Q00013437

Back box with holes and grommet FDMH295-S
Order no.: A5Q00013438

Protective cover FDMC295
Order no.: A5Q00013440

Accessories:
Back box red FDMH231-S-R
Order no.: S54311-B12-A1

Screwed cable gland M20 x 1.5
Order no.: A5Q00004478

Back nut M20
Order no.: A5Q00004479

Accessories:
Protective cover FDMC295
Order no.: A5Q00013440

Accessories:
Back box red FDMH231-S-R
Order no.: S54311-B12-A1

Protective cover DMZ1197-AD
Order no.: BPZ:5470680001

Locking plug M20 (1 hole)
Order no.: BPZ:5223550001

Accessories:
Protective cover DMZ1197-AD
Order no.: BPZ:5470680001

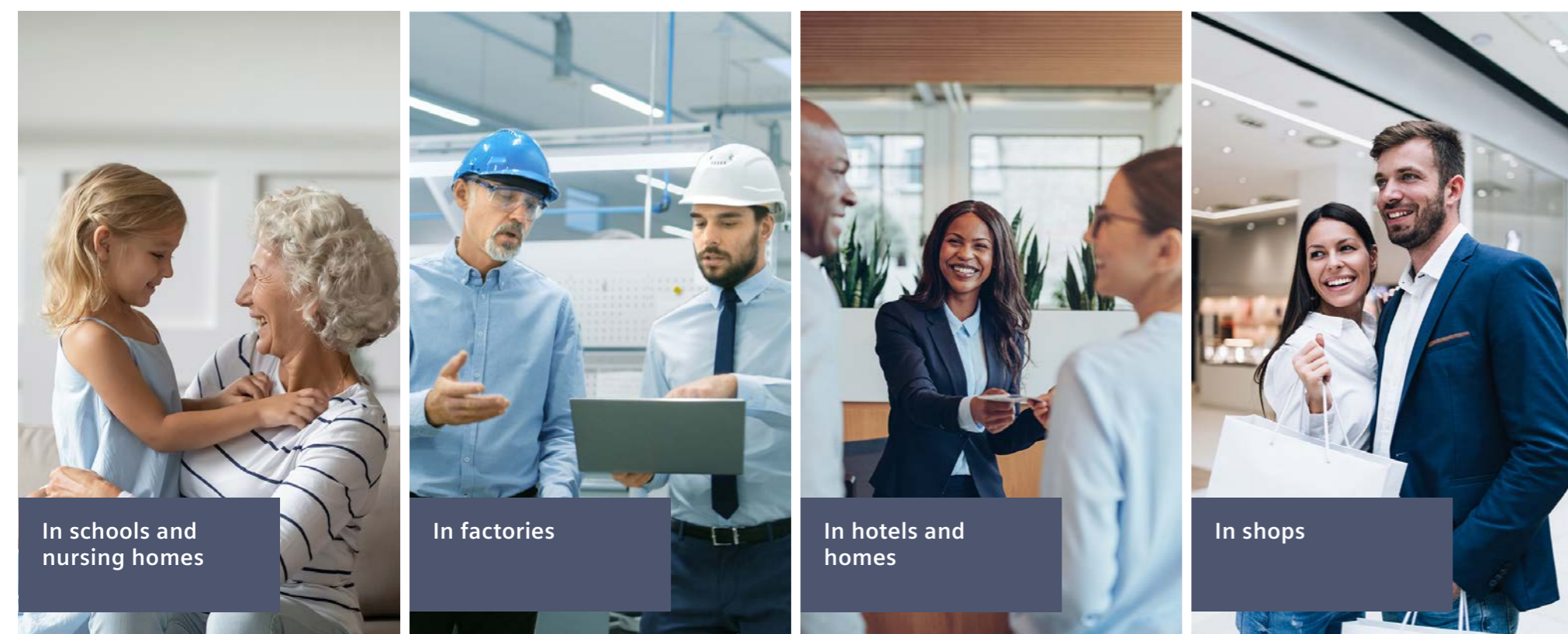
Locking plug M20 (1 hole)
Order no.: BPZ:5223550001

Legend

Ready-to-go Cerberus FIT devices

C-NET

Cerberus FIT FC360 – application examples



Benefits at a glance

- Maximized fire safety**
 - Reliable and early detection
 - LPCB approved to EN 54-2, EN 54-4, EN 54-13
 - Fast and safe evacuation with voice sounders
- Easy to use**
 - Auto-configuration (plug & play)
 - License free engineering tool
- Cost and time efficient**
 - Training efforts reduced
 - Faster engineering with pre-configured devices and build-in engineering tool