

Ricoh FAX3320L
Facsimile
The Ideal Fax System
for Small Businesses

RICOH

versatile

simple

efficient



Ricoh FAX3320L

Streamline Workflow and Increase Efficiency with this Powerful Facsimile System.

In any organization, you need productive document communication systems to maximize efficiency and keep workflow moving. For independent businesses or smaller workgroups, cost-efficiency is equally important. The RICOH® FAX3320L is a versatile yet affordable fax system that meets both needs. This powerful system combines essential fax features with convenience copying — so it can handle a wide range of jobs. Its compact footprint allows you to place it with ease, and its user-friendly design ensures smooth operation, even for first-time users.



Compact Affordable Dependable

Superior Versatility

To help you complete every office task quickly and easily, the Ricoh FAX3320L offers standard G3 faxing and 15 page-per-minute digital copying, as well as 15 page-per-minute printing via the Printer Option.

- Expect outstanding 600 dpi output quality for incoming fax documents, digital copies or printed files.
- With the optional Printer Controller, choose from PCL 5e, PCL 6 and PostScript 2 compatibility to ensure superior printing.

Exceptional Efficiency

Whether you are faxing, copying or printing, the Ricoh FAX3320L offers the convenient, time-saving features you need to complete your document tasks quickly and move on to more critical activities.

- Quickly distribute documents anywhere in the world with a 33.6 Kbps Super G3 Modem, featuring a 3.0 seconds-per-page transmission speed that helps minimize long-distance costs.
- Ensure flawless, unattended transmission of contracts, proposals and other large, multi-page documents with the 50-sheet Automatic Document Feeder, which achieves scan rates as fast as 2.8 seconds-per-page.
- With standard 8 MB fax memory (640 pages) and a 12-hour battery backup, mission-critical documents are stored if paper trays are empty or a power loss occurs.
- Memory Transmission enables users to scan fax documents, walk away with the originals, and allow the Ricoh FAX3320L to take over. It waits for the line to be free if the fax was already in use, or redials if the receiver was busy — all without user intervention.
- Speed transmission even more with Parallel Memory Transmission, which dials and starts sending your fax as soon as you scan the first page.

Intuitive, User-friendly Operation

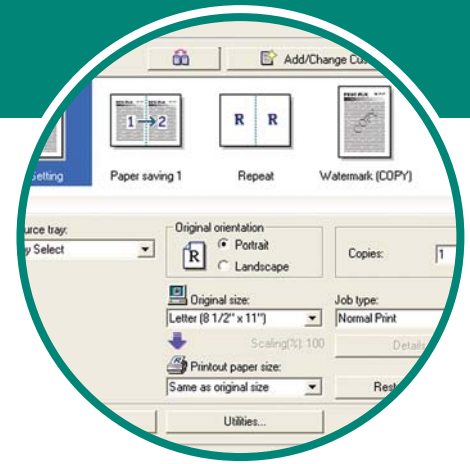
The Ricoh FAX3320L features simple operation and straightforward design, so it is easy for users to navigate the system's wide variety of functions.

- Find exactly what you need with an easy-to-read Control Panel that guides you through any function.
- Simplify complex functions — such as transaction journal printing or duplex faxing — by assigning them to one of five programmable one-touch User Function Keys.
- Keep informed of the status of the Ricoh FAX3320L at-a-glance with Status Indicator Lights. Green indicates a transmission or reception is in process, while red indicates a communication error or the need to replace paper or toner.
- Send fax documents to your most frequently called recipients with one-touch convenience using 30 Quick Dials and 100 Speed Dials.

Compact, Affordable Design

In its relatively small footprint, the Ricoh FAX3320L offers just as much versatility as many larger fax systems — yet it fits easily in space-restricted areas.

- Maximize productivity with a total paper capacity of up to 850 sheets (with all options).
- Reduce cost-per-page and simplify supply replacement with separate toner and developer units.



Expand functionality with the Printer Option.



Print or copy onto labels, overhead transparencies, postcards and other unique stocks with the 100-sheet Bypass Tray.

Your Environmental Partner

Ricoh continues its long-standing commitment to developing office solutions with environmentally friendly and superior energy- and supply-saving features, without compromising productivity, including:

- Power-Saving Sleep Mode
- Duplex and Combine Copy Modes
- Minimal Ozone Emissions
- Restriction of Hazardous Substances Compliant (RoHS)



Ricoh FAX3320L

Specifications

Specifications

Type	Desktop Facsimile
Recording Method	Laser
ITU-T Compatibility	Group 3 (V.34); ECM
Modem Speed	33.6 Kbps with Auto Fallback
Maximum Transmit Speed	3 seconds*
Data Compression	MH/MR/MMR/JBIG
Scan Speed	2.8 seconds-per-page**
(standard resolution)	
Dual Access	Standard
Standard Document Memory	8 MB (640 pages**)
Optional Document Memory	40 MB (1,500 pages**)
AutoDialer	30 Quick Dials, 100 Speed Dials, 5 Groups
User Function Keys	5 Dedicated Keys
Document Memory Backup	12 Hour (standard memory)
Auto Document Feed Capacity	50 sheets
Maximum Document Width/Scan Width	8.5"/8.4"
Document Length	23.7"
Scan Resolution	Standard: 200 x 100 dpi Detail: 200 x 200 dpi Fine: 200 x 400 dpi
Halftone	64 shades of gray with Error Diffusion
Maximum Print Speed	15 pages-per-minute
Maximum Print Resolution	600 dpi
Resolution Enhancement	Super Smoothing HQ™
Maximum Recording Width	8.4"
Maximum Recording Paper Size	8.5" x 14"
Standard Paper Capacity	250-sheet Cassette Tray 100-sheet Bypass Tray
Optional Paper Capacity	500 sheets
LCD Display Size	2 Lines (22 Characters)
Power Consumption	Energy Saver Mode: 1.2W and lower (without options)
Power Requirements	115 VAC, 60Hz
Environment	59 to 77°F, 30 to 70% RH
Dimensions (WxDxH)	17.6" x 19.5" x 16.2" (without options)
Weight	40.8 lbs. (without options)
Optional PFU (WxDxH)	17.0" x 16.1" x 5.5"
Weight	10.6 lbs.

General Features

Auto Collation
Auto Document
Auto Document Feeder
Auto Start Initial Setup
Clock With Auto Daylight Savings Time
Direct Fax Number Entry
Dual Access
Energy Saver Mode
Fax Number Entry Before Loading Document
File List
Group Dial
Group Dial List Report
Halftone with Error Diffusion
Help on Demand
Keystroke Programs
Label Registration for Quick/Speed Dials
LCD Prompts
Memory Storage Report
Ozone Emission-Free
Personal Codes and Code List Report
Pin Code Security
Print Quick Dial Labels
Program List Report

Quick Dial Keys and Quick Dial List Report
Remaining Memory Indicator
Resolution Control
Restricted Access
Scanner Cleaning Notification
Specified Cassette Selection List Report
Speed Dial Codes and Speed Dial List Report
Telephone Connection
Telephone Directory
Usage Counter
User Function List Report
User Parameter List Report
Wild Card

Communication Features

Answering Machine Interface
Automatic Fax/Tel Change
AI Redial
Busy Tone Detection
Chain Dialing
Communication Failure Report
Distinctive Ring Detection
Error Correction Mode
Error Report
Monitor Speaker
On Hook Dialing
Power Failure Report
Pulse/Tone Selection
Redial (Auto/Manual)
Shortened Protocol

Transmission Features

Batch Transmission
Blank Document Detection
Closed Network
Confidential Transmission with ID
Fax Header (TTI)
Forwarding
Immediate or Memory Transmission
Label Insertion
Memory Transmission Immediate Stop
Memory Transmission Result Report
Page Count
Page Retransmission
Quick (Parallel) Memory Transmission
Send Later
Serial Broadcasting (Immediate and Later)
Transmission Confirmation Report
Transmission Result Report

Copy Features

Copy up to 99 copies
Copy at 15 pages-per-minute

Reception Features

Authorized Reception
Auto or Manual Reception
Closed Network
Confidential Reception with ID
Confidential Reception Report
Continuous Polling
Document Separation Mark (Checked)
Memory Lock (All or By Address)
Multi-Polling Reception
Page Separation & Length Reduction
Poll Later
Polling Reception (With and Without ID)
Reception Mode Selection (Auto/Manual)
Reception Time Printing
Specified Cassette Selection
Substitute Reception

Options

Feature (Memory) Expander Card Type 300 (40 MB) (non volatile)
Telephone Handset Type 1018
Cabinet Stand
500-sheet Paper Feed Unit

*Approximately 3 seconds-per-page at 33.6 Kbps is dependent on optimal line quality, and customer performance may vary by location. Current systems used by the Public Switched Telephone Network (PSTN) generally support 28.8 Kbps modem speeds or lower.

**Based on ITU-T Test Chart #1 in standard resolution.

RICOH

www.ricoh-usa.com

Ricoh Americas Corporation, Five Dedrick Place, West Caldwell, NJ 07006

Ricoh® and the Ricoh Logo are registered trademarks of Ricoh Company, Ltd. Windows® and Windows® 95/98/Me/NT 4.0/2000/XP/Vista are registered trademarks of Microsoft Corporation. Macintosh®, Mac® OS and AppleTalk® are registered trademarks of Apple Computer, Inc. Adobe® and PostScript® are registered trademarks of Adobe Systems, Inc. PCL® is a registered trademark of Hewlett-Packard Company. All other trademarks are the property of their respective owners. Print speed may be affected by network, application or PC performance. Specifications and external appearances are subject to change without notice. Products are shown with optional features.

♻️ Printed in U.S.A. on recycled paper because Ricoh cares.

