



# HP Jetdirect ew2500 802.11g Wireless Print Server

Setup Guide



HP Jetdirect ew2500 802.11g Wireless Print  
Server  
Setup Guide



© 2004-2009 Copyright Hewlett-Packard  
Development Company, L.P.

Reproduction, adaptation or translation  
without prior written permission is prohibited,  
except as allowed under the copyright laws.

The information contained herein is subject  
to change without notice.

The only warranties for HP products and  
services are set forth in the express warranty  
statements accompanying such products  
and services. Nothing herein should be  
construed as constituting an additional  
warranty. HP shall not be liable for technical  
or editorial errors or omissions contained  
herein.

Applicable products: J8021A

Edition 1, 10/2009

Microsoft®, MS-DOS®, Windows®,  
Microsoft Windows NT® are trademarks or  
U.S. registered trademarks of Microsoft  
Corporation. IBM®, AIX® are registered  
trademarks of International Business  
Machines Corp. Ethernet is a registered  
trademark of Xerox Corporation.  
PostScript® is a trademark of Adobe  
Systems, Incorporated. UNIX® is a  
registered trademark of the Open Group.

Windows Vista™ is either a registered  
trademark or trademark of Microsoft  
Corporation in the United States and/or other  
countries.

---

# Table of contents

## 1 Introduction

What's in the box .....	1
What you need to supply .....	2
Test button functions .....	3
Wireless LAN terms and concepts .....	4
Access Point .....	4
Ad Hoc (peer-to-peer) mode .....	5
Channels .....	5
Encryption .....	6
Infrastructure mode .....	6
Security type .....	7
Service Set Identifiers (SSID) .....	8
Signal range .....	8
Network printing terms and concepts .....	8
Client-server printing .....	8
Peer-to-peer (direct mode) printing .....	9
Network protocols .....	9
Network address .....	9
Hardware address .....	9
If you need help... ..	9

## 2 Install the print server hardware

Set up the printer .....	11
If the printer is already set up .....	11
If the printer is not already set up .....	11
Connect the print server to the printer .....	11

## 3 Make a network connection

Configure a wireless network using the network (LAN) cable .....	13
Use a Microsoft Windows wireless PC .....	14
Configure settings for a wired network .....	17
Use an Apple Macintosh wireless computer .....	18
Configure a wireless network without a network (LAN) cable .....	18
Factory-default wireless settings .....	20

Optional wireless connection setup methods .....	21
<b>4 Install the printer on a network system or server</b>	
Before you begin... .....	23
Microsoft networks .....	24
Microsoft client-server networks .....	26
Apple Mac OS networks .....	26
To view documents on the CD-ROM .....	26
<b>5 Troubleshooting</b>	
Reset the print server to factory defaults (“cold reset”) .....	28
Interpret the status lights .....	29
Unable to communicate with the print server (wireless) .....	31
During initial setup .....	31
After initial setup .....	31
My configured channel does not match the configuration page .....	32
Unable to use the HP Install Network Printer Wizard .....	32
Improve reception and performance .....	32
Firmware download failure .....	33
<b>Appendix A Service and support</b>	
Hewlett-Packard limited warranty statement .....	34
Your authorized dealer .....	35
Service billing (out of warranty) .....	35
Service outside the USA .....	36
Local warranty statements .....	36
Australia and New Zealand .....	36
Customer support .....	36
HP support online .....	36
HP support by phone .....	36
Product accessibility .....	36
<b>Appendix B Solution summary</b>	
HP support software .....	37
Embedded services .....	37
Supported network protocols .....	38
<b>Appendix C Specifications</b>	
Electrical (power adapter) .....	40
Environmental .....	41
Electromagnetic .....	41
Acoustic .....	41
Radio characteristics .....	42

HP subassemblies .....	42
Channel frequencies .....	42
Safety .....	42
Wireless telecommunications .....	42

#### Appendix D Regulatory statements

FCC statement .....	43
Regulatory Model Identification Number .....	44
Canada .....	44
VCCI (Japan) .....	44
RRL statement (Korea) .....	44
Regulatory wireless statements .....	45
Exposure to radio frequency radiation .....	45
Notice to users in Argentina .....	45
Notice to users in Brazil .....	45
Notice to users in Canada .....	46
European Union regulatory notice .....	46
Notice to users in Indonesia .....	47
Notice to users in Korea .....	47
Notice to users in Mexico .....	47
Notice to users in Pakistan .....	47
Notice to users in Singapore .....	47
Notice to users in South Africa .....	47
Notice to users in Taiwan .....	48





# 1 Introduction

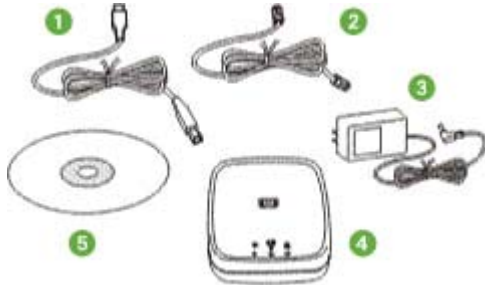
Thank you for purchasing the HP Jetdirect ew2500 802.11g Wireless Print Server! This print server complies with IEEE 802.11g wireless standards.

Use the HP Jetdirect ew2500 802.11g Wireless Print Server to directly connect your compatible HP printer to your network using either a wired or wireless connection.

- [What's in the box](#)
- [What you need to supply](#)
- [Test button functions](#)
- [Wireless LAN terms and concepts](#)
- [Network printing terms and concepts](#)
- [If you need help...](#)

## What's in the box

Figure 1-1 Box contents




1	USB cable
2	Network (LAN) cable
3	External power adapter
4	HP Jetdirect ew2500 802.11g Wireless Print Server
5	HP Jetdirect CD-ROM, containing setup software and additional documentation
*	Warranty card (where applicable)

## What you need to supply

- A supported Microsoft Windows or Apple Macintosh computer with the included Network (LAN) cable to configure wired and/or wireless settings.

For a wireless network: an 802.11b or 802.11g wireless LAN (WLAN) interface card installed in the computer.

---

 **NOTE:** Use the included LAN cable to avoid possible radio interference problems during installation. After installation, you can remove the cable.

---

- Microsoft Windows XP, Vista, Server 2003, or Server 2008.
- Apple Mac OS X 10.2 and later.
- UNIX/Linux: Hewlett-Packard HP-UX, Sun Microsystems Solaris, IBM AIX, HP MPE-i, RedHat Linux, SuSE Linux

If your network is entirely wireless, then a wireless computer is needed to set up a wireless connection from your printer to your network.

- For wireless infrastructure mode only: a wireless router, access point, or Apple base station.


In infrastructure mode, an access point is a device that connects wireless devices, such as a wireless network printer, to your cabled network. See [Wireless LAN terms and concepts on page 4](#) for more information.

- For Windows systems: the printer's software driver for your Windows system.

When using the HP Jetdirect CD-ROM to install a network printer, you need the software driver for your printer. You can obtain your printer driver from one of the following sources:

- printing system CD-ROM supplied with your printer
- HP support Web site at: [www.hp.com/go/support](http://www.hp.com/go/support).
- automated driver download feature of the HP Install Network Printer wizard on the HP Jetdirect CD-ROM (If you have Internet access, the printer installation software on the HP Jetdirect CD-ROM can automatically download and install the printer driver.)


---

 **NOTE:** The HP Install Network Printer wizard requires a printer driver file with the appropriate extension (\*.inf) to complete the installation. The applicable drivers are commonly referred to as the "Add Printer" drivers, or the "Corporate User" printer drivers.

---

# Test button functions

The test button, which is located on the back of the HP Jetdirect ew2500 print server, provides various functions depending on the number of the times the button is pressed. These functions can be useful during the installation process.

 **NOTE:** Typically, you press the button the indicated number of times in quick succession. However, some options provide additional functionality when holding the last button press.

**Table 1-1 Test button instructions**

Button Presses	Function	Instructions and Status Light (if applicable)
1	Print an HP Jetdirect configuration page.	Changes to blinking green for approximately five seconds.
2	Print an HP Jetdirect security page.	
3	Print an HP Jetdirect configuration page in English, French, Italian, German, or Spanish.	On the third press, hold the button down until the status light begins blinking, and then release the button. The configuration page prints in all languages.
4	Print an HP Jetdirect wireless status page.	
5	Change the LAN speed/handshake. This is only for switches that do not have auto negotiation mode set,  Select from the following speeds/handshake: 10 Mbps. half-duplex, 10 Mbps. full-duplex, 100 Mbps. half-duplex, or 100 Mbps. full-duplex.	On the fifth press, hold the button down until the status light begins blinking, then release the button.  Select from the following speed/handshake combinations (displayed three times): <ul style="list-style-type: none"><li>• Blinking amber — 10 half-duplex</li><li>• Solid amber — 10 full-duplex</li><li>• Blinking green — 100 half-duplex</li><li>• Solid green — 100 full-duplex</li></ul> To select a speed/handshake: <ol style="list-style-type: none"><li>1. Press and release the test button when the color associated with the speed/handshake you want is displayed. (The test button turns off then displays the selected color.)</li><li>2. If the speed is correct (indicated by the test button color), press and release the test button once to confirm.</li><li>3. If the speed/handshake is not correct (indicated by the test button color), do <b>not</b> press the test button. The change is not made. You can then start over and change the speed/handshake.</li><li>4. To complete (save) the change, power cycle the print server.</li></ol>
6	Reset 802.1x to factory default values.	To complete (save) the change, power cycle the print server.
7	Disable IPsec.	To complete (save) the change, power cycle the print server.

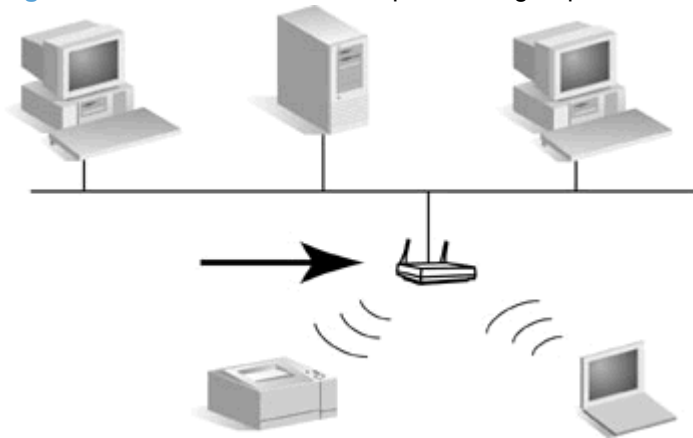
# Wireless LAN terms and concepts

## Access Point

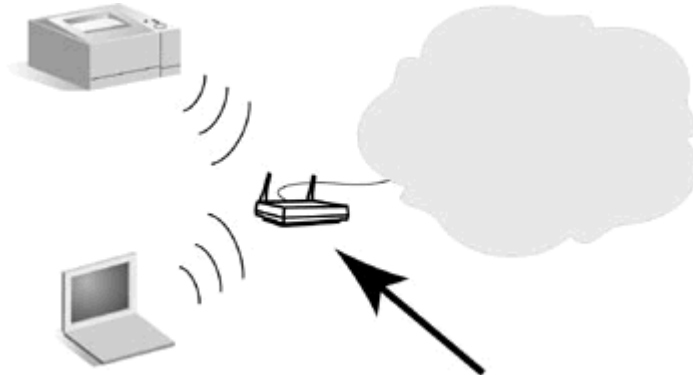
An Access Point is a device that typically serves as a bridge or gateway between wireless devices and the devices on a cabled network. An Access Point must be able to receive and forward network traffic between wireless and cabled network devices. Multiple Access Points can act as repeaters to extend the range of a wireless network.

Connecting via an access point is called Infrastructure Mode. On Apple networks, this is called Airport Network Mode.

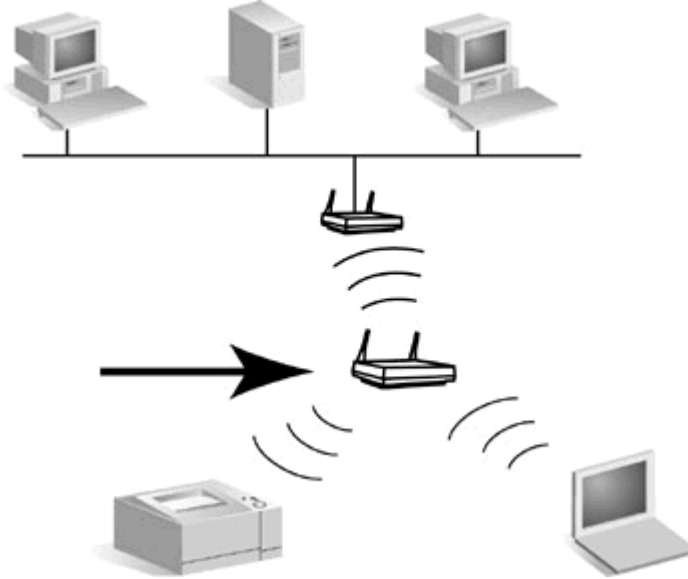
**Figure 1-2** Access Point in enterprise workgroup



**Figure 1-3** Residential gateway as Access Point



**Figure 1-4** Access Point as wireless repeater



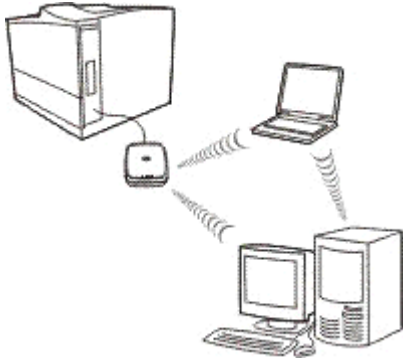
## Ad Hoc (peer-to-peer) mode

Ad Hoc mode (or peer-to-peer mode) is a wireless network topology where wireless devices communicate with each other directly. An Access Point is not used. On Apple networks, Ad Hoc mode is called computer-to-computer mode.

**NOTE:** Ad Hoc mode is not as reliable as Infrastructure mode, and if used, should be limited to six devices or less.

When set in this mode, the HP Jetdirect print server receives print jobs from wireless computers directly.

**Figure 1-5** Ad Hoc mode: a peer-to-peer wireless network topology



**NOTE:** The term “peer-to-peer” might have a different meaning depending on its usage. While Ad Hoc peer-to-peer mode refers to a wireless network topology, HP Jetdirect peer-to-peer printing refers to a direct print path from a network computer to a printer. HP Jetdirect peer-to-peer printing can be used on both Ad Hoc or Infrastructure wireless topologies.

## Channels

IEEE standards for 802.11b and 802.11g wireless LANs specify a spectrum of radio waves for wireless communications. The allowed spectrum is divided into channels consisting of 22 MHz each. The number


of available channels authorized for use may be restricted based on your location (see [Radio characteristics on page 42](#)).

- If the print server is powered on and discovers a wireless network whose SSID (network name) is also “hpsetup”, it will automatically adjust its channel to match that network.
- If the print server is reconfigured for Infrastructure mode, it will automatically adjust its channel to match the Access Point.


## Encryption

Wireless networks use radio signals for network communications, which can be easily monitored by someone eavesdropping on the network. To deter eavesdropping and to help ensure data privacy, encryption of wireless communications may be used.

For HP Jetdirect print servers in their factory-default state, encryption of wireless communications is disabled. However, the print servers support static WEP and popular dynamic encryption protocols.

 **NOTE:** Wireless performance may be reduced when using encryption keys due to the additional processing time required.

**Static Encryption.** WEP encryption protocols were developed to provide a basic level of data privacy. WEP protocols use static encryption keys to encrypt and decrypt wireless communications.

 **NOTE:** WEP encryption levels are sometimes called 40-bit, 64-bit, 104-bit, or 128-bit encryption. Both 40-bit and 64-bit encryption are really the same, as are 104-bit and 128-bit encryption. When entering WEP keys, the user specifies 40 bits for 64-bit encryption, or 104 bits for 128-bit encryption. An additional 24 initialization vector (IV) bits are automatically added for a total of 64 bits and 128 bits, respectively. In this guide, we will use “40/64-bit” and “104/128bit” to specify these WEP encryption levels.

For basic encryption, static WEP keys are configured on each device on the wireless network. WEP keys are considered static because they remain the same unless manually reconfigured. For example, on a typical Infrastructure mode network that uses static WEP encryption, a change to the WEP key on an Access Point will require a manual change to the WEP key on each wireless device.

HP Jetdirect wireless print servers support configuration of up to four static WEP keys, for either 40/64-bit or 104/128-bit encryption.

**Dynamic Encryption.** For advanced encryption methods, dynamic encryption protocols are used. For dynamic encryption protocols, encryption keys are automatically changed at routine intervals making them difficult to decipher.

Dynamic encryption protocols, such as dynamic WEP and wi-fi protected access (WPA/WPA2), provide a more secure wireless environment.

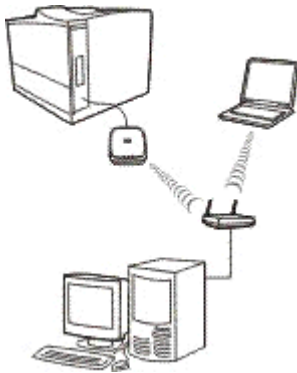
When configured for WPA/WPA2–Personal authentication, HP Jetdirect print servers use WPA encryption.

## Infrastructure mode

Infrastructure mode is a wireless network topology where all wireless communications go through an Access Point. Infrastructure mode is called a Basic Service Set (BSS), and sometimes referred to as “enterprise mode.” On Apple networks, Infrastructure mode is called Airport Network mode. When set

in this mode, the HP Jetdirect print server receives print jobs from wireless and cabled network computers through an Access Point.

**Figure 1-6** Infrastructure mode: a wireless topology that uses an Access Point for connection to a wired network



## Security type

Security is used to validate the identification of each device or computer that is attempting to access a network. The security type used on a network is determined during network design and depends on the network security requirements. Consequently, security methods are closely associated with encryption options that are also used on the network.

HP Jetdirect wireless print servers support the following security types:

- **No security.** No encryption or authentication is used. Open system. Your wireless network does not require device authentication or security to access the network. However, your network might use WEP encryption keys for data privacy.
- **WEP-Personal.** Each device on your wireless network uses a shared encryption key (a shared password value) for network access and communication. Each device on the network must use the same key. The HP Jetdirect print server supports IEEE 802.11 WEP keys for encrypted network communications.
- **WEP-Enterprise.** The network uses WEP with EAP/802.1x authentication. This type of security utilizes a central authentication server, such as RADIUS, to authenticate users on the network. The HP Jetdirect print server supports these server-based authentication protocols: LEAP, PEAP, and EAP-TLS.
- **WPA/WPA2-Personal.** Your network uses wi-fi protected access (WPA) with a pre-shared key that is typically generated by a pass-phrase. WPA encryption is normally used for wireless communication and offers improved security.
- **WPA/WPA2-Enterprise.** Your network uses WPA with EAP/802.1x authentication. This type of security utilizes a central authentication server, such as RADIUS, to authenticate users on the network. The HP Jetdirect print server supports these server-based authentication protocols: LEAP, PEAP, and EAP-TLS.

For more information about authentication, see the *HP Jetdirect Print Servers Administrator's Guide* supplied on the HP Jetdirect CD-ROM.

## Service Set Identifiers (SSID)

An SSID is a logical name assigned to a wireless LAN. It is typically used to provide LAN access control. For example, if the SSID for a wireless network is “mycompany”, then each wireless device on this network must be configured with this SSID.

In infrastructure mode, the Access Point will require wireless devices to be configured with the appropriate SSID before network access is allowed.

## Signal range


The range over which wireless devices can communicate depends on the physical environment and the orientation of the HP Jetdirect print server.

For 802.11g, the range is typically 50 feet at the highest data rate (54 Mbps). Data rate will decrease to 802.11b levels as range, traffic and interference increase.

For 802.11b, the range is typically 100 feet at the highest data rate (11 Mbps), and 300 feet at the lowest data rate (1 Mbps).

In general, while radio waves can bounce off obstacles to access print servers, it is best to have clear line-of-sight access between devices without obstacles through which the signal must pass.

---

 **NOTE:** Signal range and wireless transmission performance is reduced with increasing distance between devices, and with obstacles that block or absorb signals.

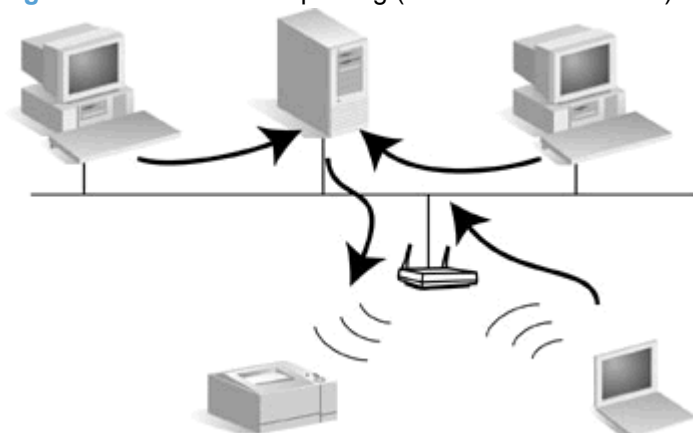
---

## Network printing terms and concepts

### Client-server printing

On a client-server network, client computers send print jobs to a dedicated network server that controls the use of each installed printer. The HP Jetdirect print server receives print jobs over the network under the network server’s control, or can automatically monitor print queues and de-spool print jobs from the network server.

**Figure 1-7** Client-server printing (in Infrastructure mode)

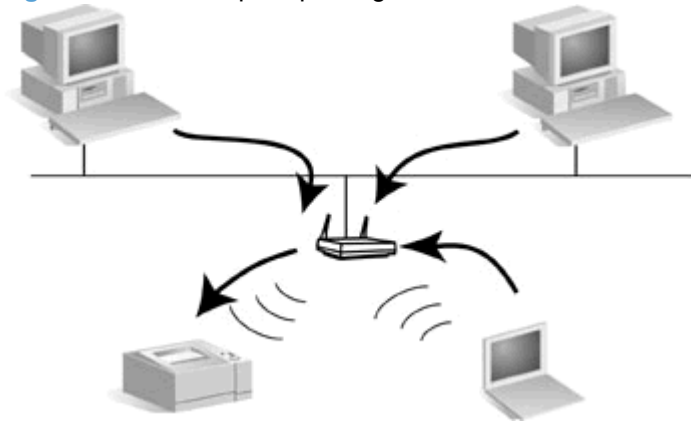




## Peer-to-peer (direct mode) printing

On a peer-to-peer network, dedicated network servers are not used. Instead, an HP Jetdirect-connected network printer is installed on each client computer that will send print jobs directly to the printer.

Figure 1-8 Peer-to-peer printing



## Network protocols

For network computers and printers to communicate on a network, they must use a common language, or network protocol. The HP Jetdirect print server can support many different network protocols simultaneously, such as TCP/IP (Transmission Control Protocol/Internet Protocol) and IPX (Internet Packet Exchange). For a list of supported protocols, see [Supported network protocols on page 38](#).

TCP/IP is the most commonly used protocol in most network environments.

## Network address

Each device on a network must be identified by a unique network address for the specific network protocol used. On an IPX network, the network address is assigned automatically. On an IP network, configuration and assignment of IP addresses and other IP settings are a bit more complex. Network addresses are configured and stored on each HP Jetdirect print server during installation, and are listed on the HP Jetdirect configuration page for the print server.

## Hardware address

Each device on a network contains a unique LAN hardware (or “station”) address that is assigned by the manufacturer of the device. Because the HP Jetdirect print server connects printers to a network, each print server contains a LAN hardware address assigned by Hewlett-Packard.

The address consists of 12 hexadecimal digits (0 through F). The first 6 digits uniquely identify the manufacturer, and the second 6 digits uniquely identify the device.

The LAN hardware address is important because it may be needed to identify the printer during installation. It is listed on the HP Jetdirect configuration page for each print server. In addition, it is listed on a label attached to the print server.


## If you need help...

For advanced topics or more information, see the documentation supplied electronically on the HP Jetdirect CD-ROM.

For release notes, see the Readme file in the root directory of the HP Jetdirect CD-ROM.

For web-based or direct phone support, refer to the HP support information in “HP Support Online” and “HP Support By Phone” in [Customer support on page 36](#).

---


 **NOTE:** For toll-free phone support in the USA and Canada, call HP support at: 1-800-HPINVENT (1-800-474-6836).

For phone support worldwide, see [Customer support on page 36](#). For the latest HP support telephone numbers and available services worldwide, visit: [www.hp.com/support/support\\_assistance](http://www.hp.com/support/support_assistance).

---

## 2 Install the print server hardware

### Set up the printer

 **NOTE:** Do not install any printer software until all of the hardware connection steps have been completed.

---

#### If the printer is already set up


1. Turn off the printer.
2. Detach it from any computer.
3. Turn on the printer.
4. Proceed to [Connect the print server to the printer on page 11](#).

#### If the printer is not already set up

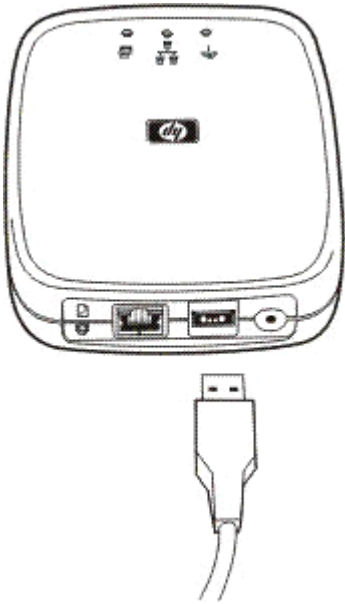
1. Assemble the hardware only using the instructions supplied with the printer.
2. Set aside the printer CD. (Do not install its software yet. Do not attach the printer to your computer.)
3. Turn on the printer.
4. Print a test page as instructed.

#### Connect the print server to the printer

1. Connect the USB cable.
  - Plug the supplied USB cable into the USB connector on the back of the print server.
  - Plug the other end of the cable into the printer's USB connector.

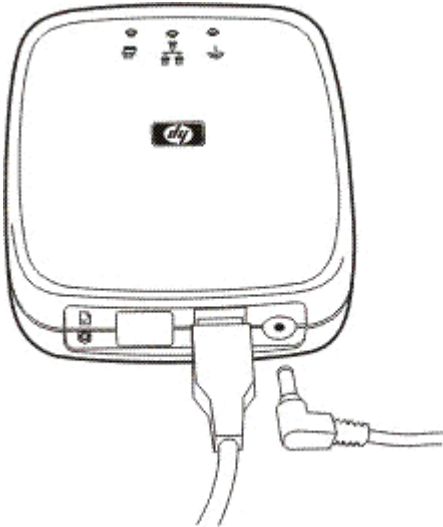
 **CAUTION:** Do not use a USB hub, extender or parallel converter.

---



2. Connect the power cable.

- Plug the supplied power module into a power outlet.
- Plug the other end of the power cable into the power connector on the back of the print server.




3. Print a configuration page by pressing the test button once. (The test button is located on the back of the HP Jetdirect ew2500 print server.)
4. Proceed to [Make a network connection on page 13](#).

---

## 3 Make a network connection

This section describes how to configure the HP Jetdirect ew2500 802.11g Wireless Print Server with either a wired or wireless network connection to your network.

---

 **NOTE:** You can use a wired network connection to configure either wired or wireless settings. HP recommends that you use a wired connection to configure wireless settings.

---

Configuration procedures:


- To configure wireless settings using the included network (LAN) cable, go to [Configure a wireless network using the network \(LAN\) cable on page 13](#).
- To configure settings for a wired network, go to [Configure settings for a wired network on page 17](#).
- To configure settings for an Apple Macintosh wireless computer, go to [Use an Apple Macintosh wireless computer on page 18](#).
- To configure wireless settings without a network (LAN) cable, go to [Configure a wireless network without a network \(LAN\) cable on page 18](#).
- For optional methods, go to [Optional wireless connection setup methods on page 21](#).

### Configure a wireless network using the network (LAN) cable

For wireless operation, the print server needs to be connected to your wireless network before you can discover and install the printer on your PC or other network system.

You can configure the wireless settings with the included network (LAN) cable, which can be removed after you have completed configuring the wireless settings.

---

 **NOTE:** HP recommends that you configure the wireless settings using a network (LAN) cable (wired). Although you can configure without a network cable (wireless), it is generally easier to configure using the included network (LAN) cable.

---

After connecting the cable, allow up to 30 seconds for the cable connection to be enabled. When disconnecting the cable after configuration, allow up to 30 seconds for the wireless connection to enable automatically.

---

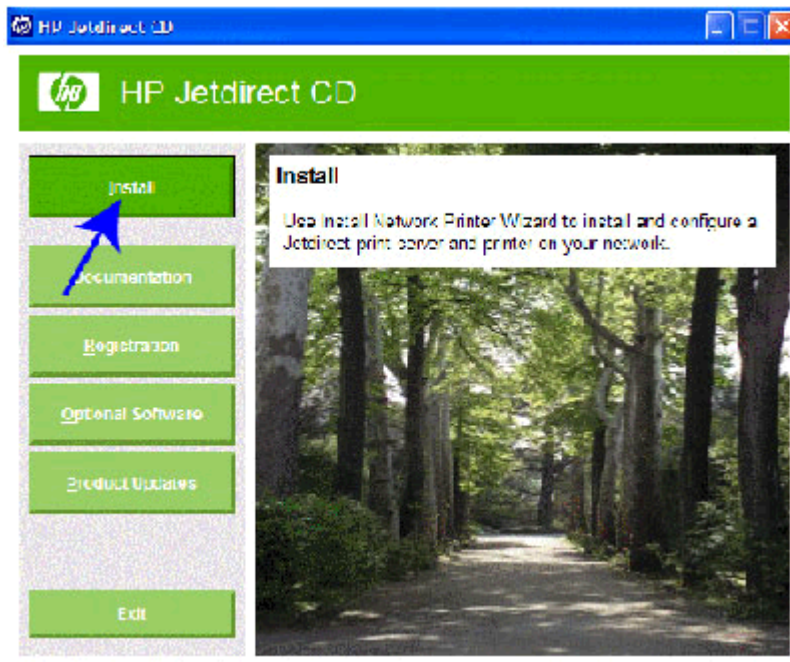
To configure a wireless connection using a network (LAN) cable, verify the following:

- You have a computer with one of the following operating systems:
  - Microsoft Windows XP, Vista, Server 2003, or Server 2008.
  - Apple Mac OS X 10.2 or greater.
- You have installed the HP Jetdirect print server hardware and have printed an HP Jetdirect configuration page.
- (Infrastructure mode only) The wireless router, access point, or Apple base station on your network is operating properly.

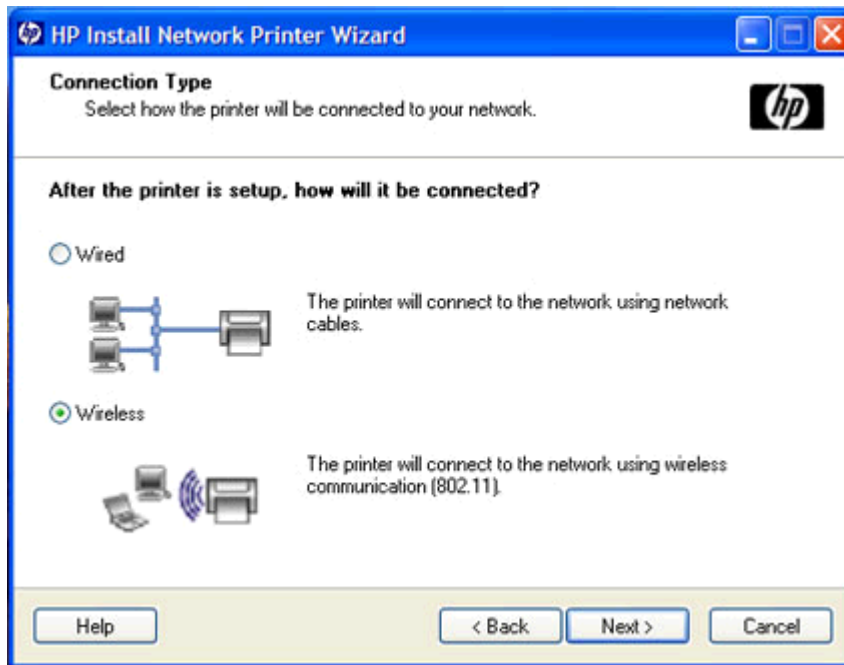
△ **CAUTION:** If you reset the print server to factory-default values after you configure a wireless network connection, the network connection will be lost. To reestablish a connection, you must reconfigure the print server.

## Use a Microsoft Windows wireless PC

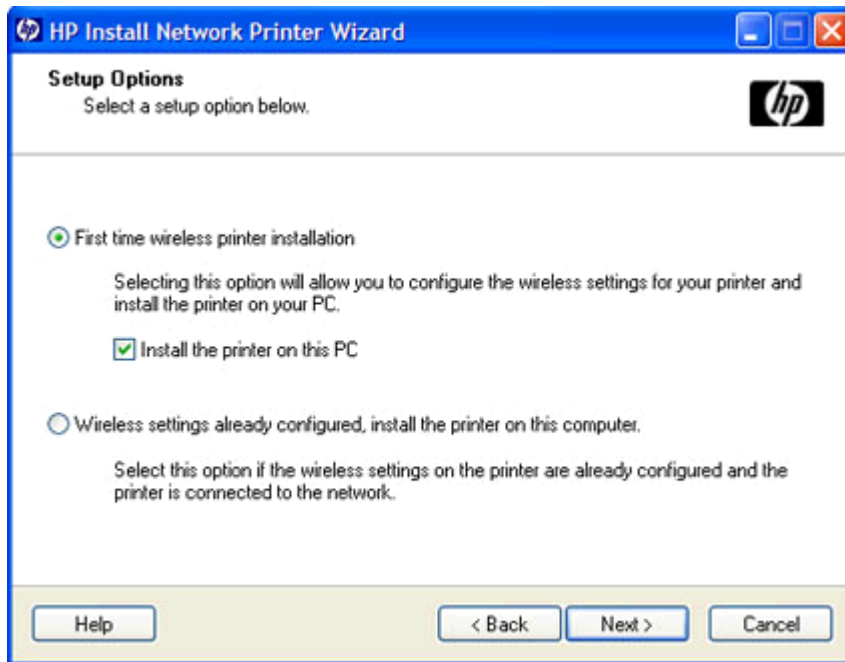
1. Insert the HP Jetdirect CD-ROM.
2. When the CD-ROM utility runs, select **Install**.



3. Select **Wireless** to connect your printer to the network using wireless communication (802.11) and click **Next**.



4. For a new print server that has not been configured, select **First time wireless printer installation** and click **Next**.




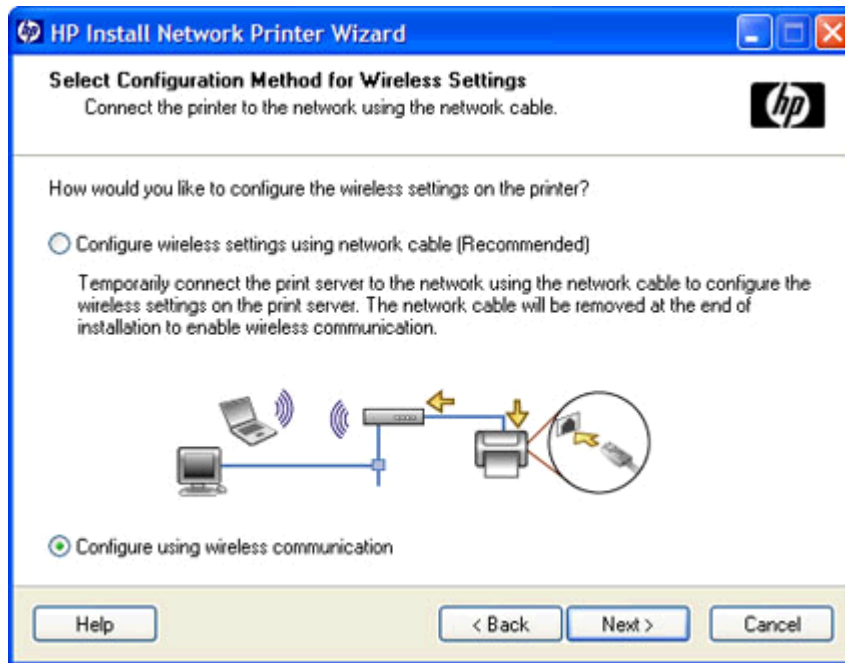
**NOTE:** By default, the wizard will install the printer on this PC. If you only want to configure wireless settings, uncheck the box next to Install the printer on this PC. If this box is checked (default), the wizard attempts to install the printer on this PC after wireless connection settings have been configured.

If you later wish to install the printer on this PC, see [Install the printer on a network system or server on page 23](#).



5. Select the configuration method.

 **NOTE:** HP recommends that you configure the wireless settings using a network cable (wired). Although you can configure without a network cable (wireless), it is generally easier to configure using the included network (LAN) cable.



6. Follow the instructions through the remaining screens to complete your wireless configuration.
7. When you have configured the HP Jetdirect print server with a wireless connection to your network, do the following:
  - Print an HP Jetdirect configuration page to confirm your settings.
  - To install the printer on your PC, continue with the instructions displayed.

After your printer is configured with a network connection, it may be installed on your network computers or servers similar to other network printers. To install the printer, go to [Install the printer on a network system or server on page 23](#).

If you are unable to communicate with the printer over your network, see [Troubleshooting on page 28](#).


## Configure settings for a wired network

A network connection is required before you can discover and install the printer on your network systems. To configure a wired connection, verify the following:

- You have a computer with one of the following operating systems:
  - Microsoft Windows XP, Vista, Server 2003, or Server 2008.
  - Apple Mac OS X 10.2 or greater.
- You have installed the HP Jetdirect print server hardware and have printed an HP Jetdirect configuration page.

Set up each Windows computer for printing on the networked printer by inserting the CD-ROM and selecting **Install**. This basic procedure involves configuring network parameters for the print server, installing printer drivers and other software, and setting up the print path. You will use the installation software on either the CD-ROM supplied with your printer or on the HP Jetdirect CD-ROM supplied with your print server, depending on your printer model.

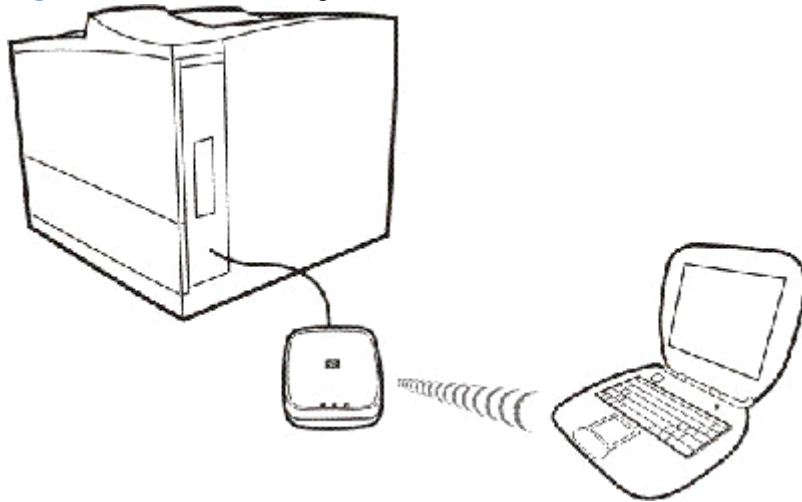
To use the wizard to install the networked printer on this computer, return to the initial screen for this CD, select **Install**, and follow the instructions. Help is included. When finished there, this computer is ready to use the printer.

 **NOTE:** Making network address changes might break the print path set up by the wizard if the printer has been previously installed on the computer.

## Use an Apple Macintosh wireless computer

To configure a wireless network connection using an Apple Macintosh wireless computer, refer to the detailed instructions supplied on the HP Jetdirect CD-ROM.

**Figure 3-1** Mac OS Configuration



The HP Jetdirect CD-ROM includes a utility, the HP Wireless Jetdirect Assistant for Mac OS, that allows you to configure the printer with a wireless connection to your Mac OS network. To use this utility, the HP Jetdirect wireless print server must be in a factory-default state.

In addition, you may be able to use an optional configuration method described in the next section.

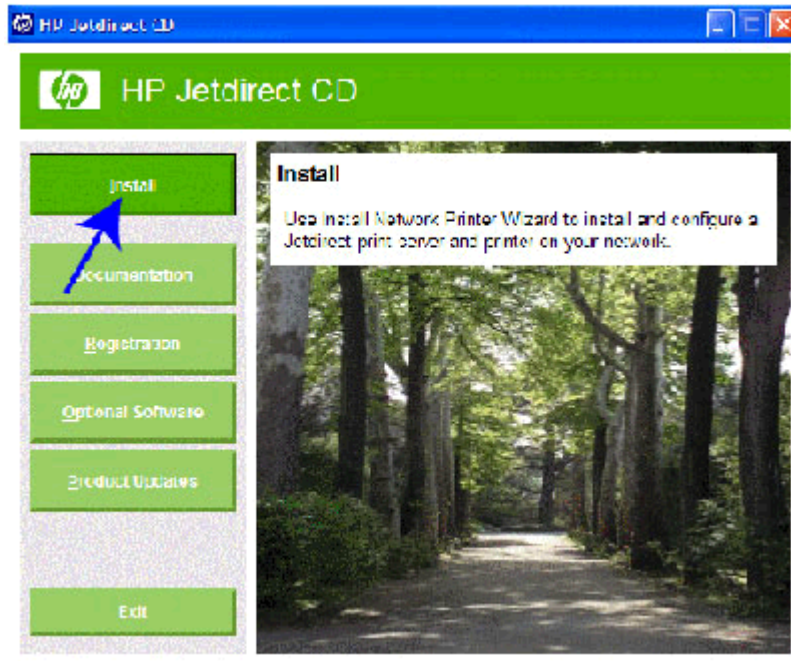
After you have created a wireless connection, you will need to use other utilities, such as the HP LaserJet Utility for Mac OS, to configure and manage your printer for printing.

## Configure a wireless network without a network (LAN) cable

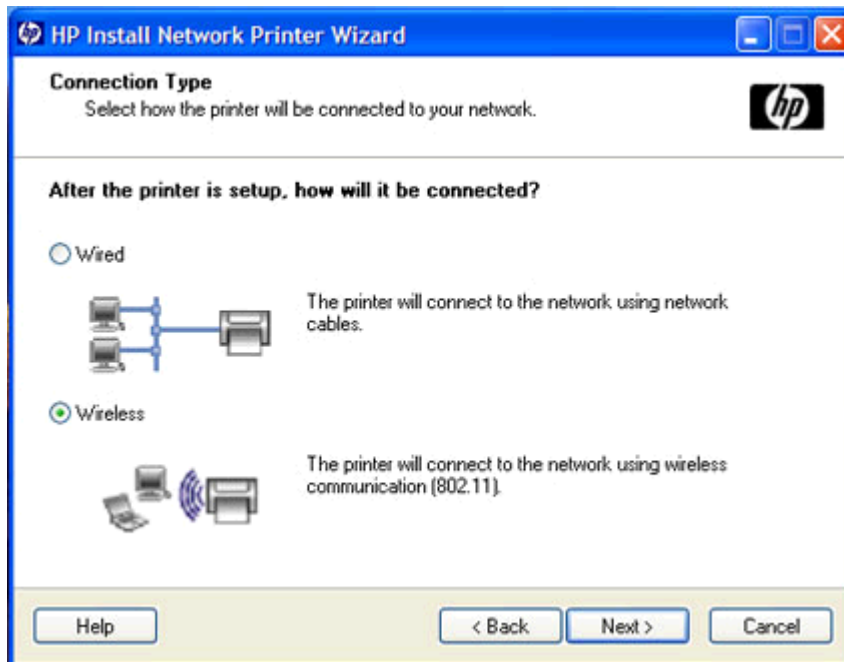
To configure your wireless settings without a network cable, follow this procedure:

1. Insert the HP Jetdirect CD-ROM into your wireless PC.
2. Wait for the CD-ROM utility to autostart, or run Setup.exe from your CD-ROM drive.

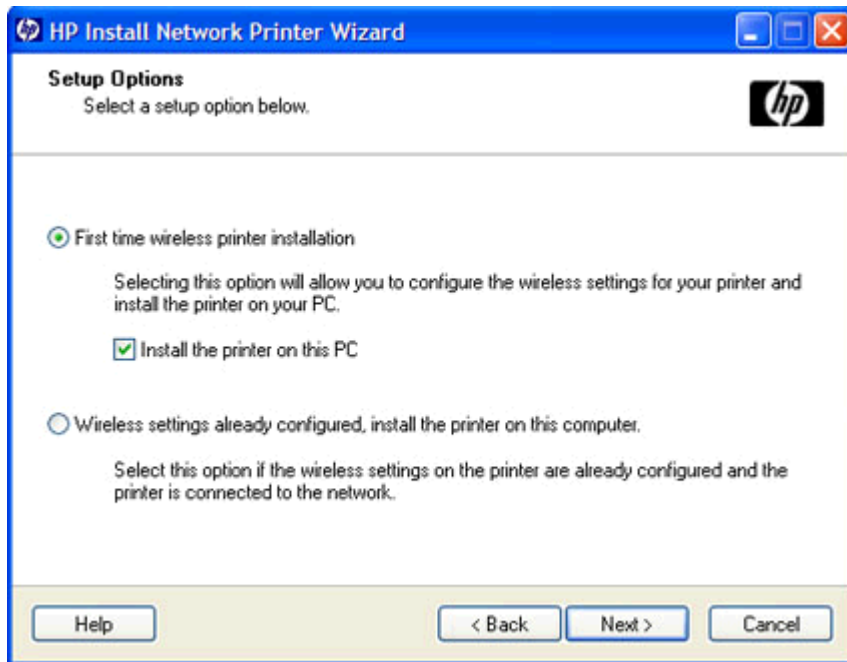
3. When the CD-ROM utility runs, select **Install**.



4. Select **Wireless** to connect your printer to the network using wireless communication (802.11) and click **Next**.



5. For a new print server that has not been configured, select **First time wireless printer installation** and click **Next**.



**NOTE:** By default, the wizard will install the printer on this PC. If you only want to configure wireless settings, uncheck the box next to Install the printer on this PC. If left checked (default), the wizard will try to install the printer on this PC after wireless connection settings have been configured.

If you later wish to install the printer on this PC, use the procedure in [Install the printer on a network system or server on page 23](#).

6. Select **Configure using wireless communication**.
7. Follow the instructions through the remaining screens to complete your wireless configuration.
8. When you have configured the HP Jetdirect print server with a wireless connection to your network, do the following:
  - Print an HP Jetdirect configuration page to confirm your settings.
  - To install the printer on your PC, continue with the instructions displayed.

After your printer is configured with a network connection, it may be installed on your network computers or servers similar to other network printers. To install the printer, go to [Install the printer on a network system or server on page 23](#).

If you are unable to communicate with the printer over your network, see [Troubleshooting on page 28](#).

## Factory-default wireless settings

The HP Jetdirect print server wireless factory-default settings are shown in the following table.

**Table 3-1 Factory default wireless settings**

Parameter	Settings	Comments
Communications Mode	Ad Hoc	If your network uses a wireless router, access point, or Apple base station, reconfigure the Communications Mode of the HP Jetdirect print server to Infrastructure.
Channel	11	(Ad Hoc mode only) Specifies the broadcast channel if the print server fails to connect to a network. In most cases, you will not need to change this setting. The print server scans all available channels for the specified network and adapts its channel to the one detected.
Network Name (SSID)	hpsetup	Change the SSID on the print server to match your network. The SSID is case sensitive.
Authentication	Open System	The HP Jetdirect print server is not configured for network authentication. If required by your network, the proper authentication method must be configured on the HP Jetdirect print server.
Encryption (WEP)	[Disabled]	If your network uses WEP encryption keys, configure the encryption keys on the print server. You can configure up to four WEP keys. The active key must match the value and active key position (for example, Key 1) configured on other wireless devices.

## Optional wireless connection setup methods

To use Telnet or the HP embedded Web server, first reconfigure your wireless computer to communicate using the HP Jetdirect factory-default settings, and then create an IP path to the default IP address (check the HP Jetdirect configuration page for the IP address assigned on the print server). To create an IP path, use one of the following methods:

- If supported, use a “route add” command from your system prompt (see your system help or documentation).
- Temporarily reconfigure your computer’s IP address to match the default IP network of the HP Jetdirect print server. For example, if the print server IP address is 169.254.111.111, you could use 169.254.111.112 for your computer. Before modifying your computer’s settings, you should record your current settings, or if possible, create a new profile for your temporary settings.

Optional methods to configure a wireless network connection include:

- Using a Telnet session with the HP Jetdirect print server to configure selected wireless parameters (not all wireless parameters can be set through Telnet). For information on available Telnet commands, use the Telnet help command. Also, refer to the *HP Jetdirect Print Servers Administrator's Guide* for this print server model, supplied on the HP Jetdirect CD-ROM.
- Using your Web browser to access the HP embedded Web server on the HP Jetdirect wireless print server. For more information, refer to the *HP Jetdirect Print Servers Administrator's Guide* for this print server model, supplied on the HP Jetdirect CD-ROM.

---

## 4 Install the printer on a network system or server

Once your printer is connected to your network (wired or wireless), you can install the printer on the dedicated print server.

This section provides information for using the software provided on the HP Jetdirect CD-ROM.

- [Before you begin...](#)
- [Microsoft networks](#)
- [Microsoft client-server networks](#)
- [Apple Mac OS networks](#)
- [To view documents on the CD-ROM](#)

### Before you begin...

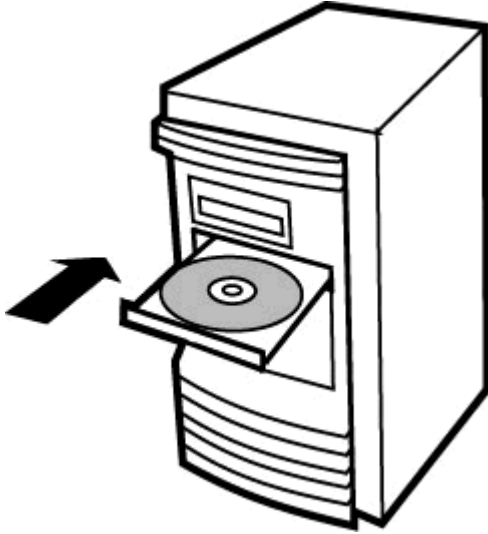
Review the following information:

- Installing the printer might be easier if you use the CD-ROM that came with your printer instead of using the HP Jetdirect CD-ROM. You can use your printer's CD-ROM if it contains network printer installation software integrated with your printer software.
- The HP Jetdirect CD-ROM does not contain printer driver software, which must be available to install and use your printer. Obtain the printer driver from the following sources:
  - the printer CD-ROM supplied with your printer
  - HP online support Web site at [www.hp.com/go/support](http://www.hp.com/go/support)
  - the automated driver download feature of the HP Install Network Printer wizard on the HP Jetdirect CD-ROM (requires Internet access)

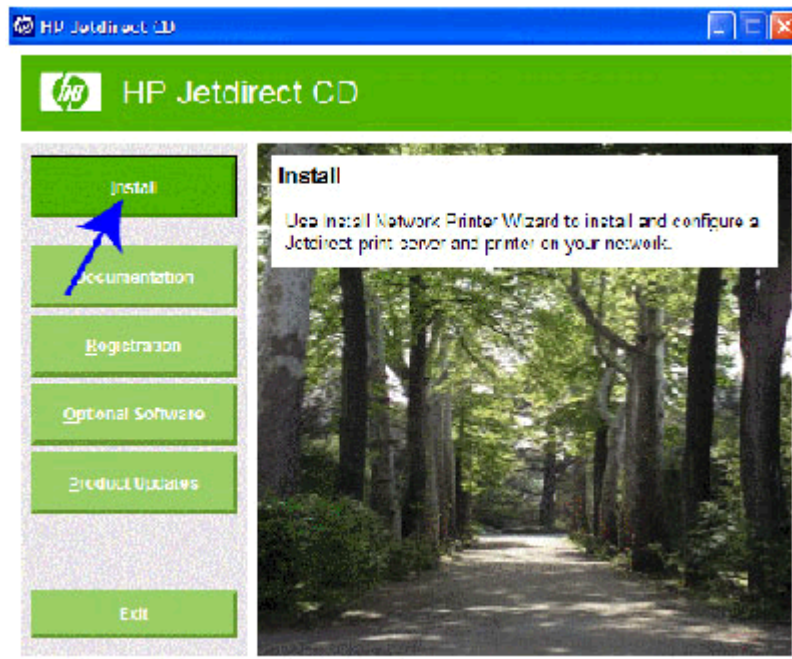
## Microsoft networks

To install the printer on a Microsoft Windows XP, Vista, Server 2003, or Server 2008 system, run the HP Jetdirect CD-ROM utility:

1. Insert the CD-ROM into your CD-ROM drive.

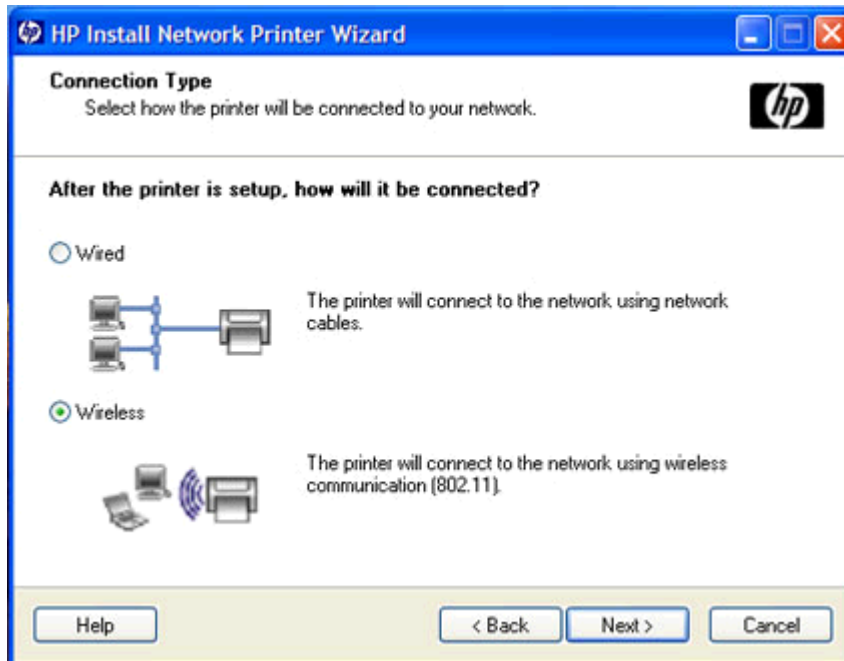


2. Wait for the installation utility to start automatically. If necessary, run Setup.exe from the root directory of the HP Jetdirect CD-ROM.
3. When the CD-ROM utility runs, select **Install**.

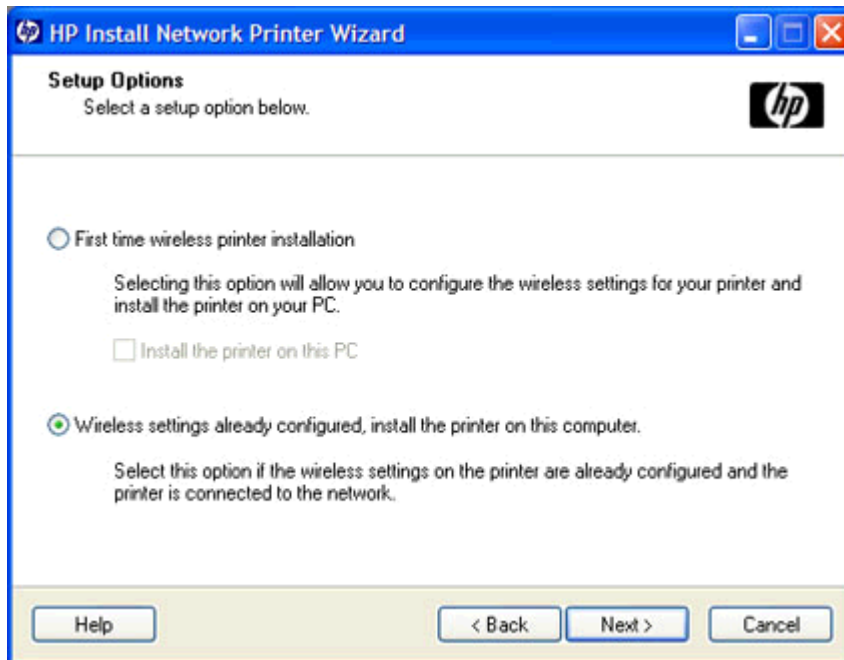




4. Select **Wireless** and click **Next**.



5. To install the printer, select **Wireless settings already configured, install the printer on this computer**, then click **Next**.



6. Once the wizard finishes installing the printer, and when prompted, print a test page to verify printer setup.

If the test page successfully prints, then you have completed printer setup on this computer system. (If this system is a server, see [Microsoft client-server networks on page 26.](#))

If the test page fails to print, perform the troubleshooting tasks displayed by the wizard. Click **Help** for more information. In addition, you can select **Networking Help** from the CD-ROM installation utility's main screen.

For troubleshooting information, see [Troubleshooting on page 28](#). For additional information, read the *HP Jetdirect Print Servers Administrator's Guide* for your particular print server model. For information on accessing documents on the HP Jetdirect CD-ROM, see [To view documents on the CD-ROM on page 26](#).

## Microsoft client-server networks

After you have set up the printer on the server, set up your network clients to access the printer through the server. The procedures depend on the utilities available for your particular clients and network operating system.

For example, if the printer is installed and shared on a Microsoft server, each Windows client can use Add Printer or Network Neighborhood utilities to access the printer.

For more information, refer to the documentation and help supplied with your network operating system.

## Apple Mac OS networks

For printer configuration and management on AppleTalk networks, use the HP LaserJet Utilities provided on the HP Jetdirect CD-ROM. To install the software, follow these steps:

1. Insert the CD-ROM into the CD-ROM drive and wait for the HP Jetdirect CD-ROM icon to appear on the screen.
2. Double-click the HP Jetdirect icon to display the items in the HP Jetdirect window.
3. Double-click the HP LaserJet software installation icon for the language you want. Then follow the instructions on the screen.

To run and use the software, refer to the help files provided with the software. For more information, read the appropriate *HP Jetdirect Print Servers Administrator's Guide* for your particular HP Jetdirect model, supplied on the CD-ROM.


## To view documents on the CD-ROM

Several HP Jetdirect print server documents, including the *HP Jetdirect Print Servers Administrator's Guide* for this print server, are provided on the CD-ROM in Adobe Acrobat Reader format (\*.pdf). For supported Windows systems, these documents can be accessed through the CD-ROM utility.

1. Insert the CD-ROM into your CD-ROM drive.
2. Wait for the installation utility to start automatically. If necessary, run Setup.exe from the root directory of the HP Jetdirect CD-ROM.
3. Select Documentation. Then select your HP Jetdirect product and browse to the desired documents.

For Adobe Acrobat format (\*.pdf) documents, Adobe Acrobat Reader 4.0 or greater is required. Adobe Acrobat is available free from Adobe's web site at: [www.adobe.com/products/acrobat](http://www.adobe.com/products/acrobat).

---

 **NOTE:** For other supported operating systems, you can access the documentation files directly from the \DOCS directory on the CD-ROM. For Adobe Acrobat format (\*.pdf) documents, the Adobe Acrobat Reader for your system must be installed and available on your system.

If you have difficulty viewing \*.pdf documents, upgrade to the latest released version of Acrobat Reader available from Adobe Systems Incorporated.

Documents provided in PDF format on the HP Jetdirect CD-ROM are compatible with screen readers used for accessibility.

---

---


# 5 Troubleshooting

This section provides basic troubleshooting information. Additional information is provided in the *HP Jetdirect Print Servers Administrator's Guide* for this print server model, supplied on the HP Jetdirect CD-ROM.

- [Reset the print server to factory defaults \(“cold reset”\)](#)
- [Interpret the status lights](#)
- [Unable to communicate with the print server \(wireless\)](#)
- [My configured channel does not match the configuration page](#)
- [Unable to use the HP Install Network Printer Wizard](#)
- [Improve reception and performance](#)
- [Firmware download failure](#)

To troubleshoot your HP Jetdirect print server, you may need the following items:

- An HP Jetdirect Configuration Page
- A Printer Configuration or Diagnostic Page
- Documentation that came with your printer
- Documentation on the CD-ROM supplied with your HP Jetdirect print server
- The diagnostics tools and utilities provided with your network software (for example, TCP/IP utilities, or network printer management applications such as HP Web Jetadmin)

 **NOTE:** Frequently asked questions about installing and configuring the HP Jetdirect print server can be found by searching for your HP Jetdirect product at: [www.hp.com/support/net\\_printing](http://www.hp.com/support/net_printing).

## Reset the print server to factory defaults (“cold reset”)

Once you have configured the HP Jetdirect print server, your settings are saved in memory even over power cycles.

If you lose communications with the HP Jetdirect print server, or it fails to operate properly, you might need to reset the print server to its factory-default configuration. This is called a cold reset.

△ **CAUTION:** Resetting the HP Jetdirect wireless print server to factory-default settings can cause the print server to lose its wireless connection to your network. Reconfiguration of wireless network settings and reinstallation of the print server might be required.

If a printer reset is required, settings are reset to their factory default values. If you reset the printer, you might need to reconfigure the printer's settings that are required by users.

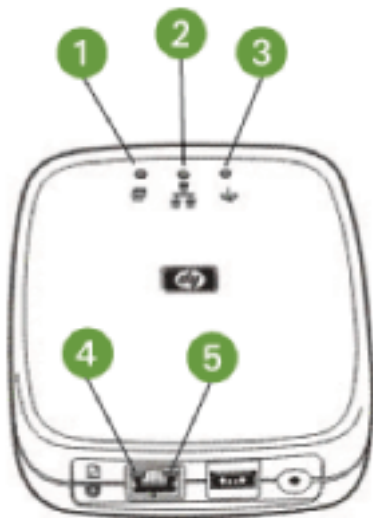
To restore factory-default settings on an HP Jetdirect ew2500 print server, follow these steps:

1. Unplug the power module from the back of the print server.
2. While holding down the test button on the back of the print server, plug the power module back into the print server then release the test button. Any user-configured settings will be erased.

When you restore the print server to its factory-default settings, you should print an HP Jetdirect configuration page to confirm that factory-default values have been assigned.

## Interpret the status lights

The HP Jetdirect ew2500 status lights provide information about the USB, wired, and wireless connections. The Link and Act status lights on the LAN connector indicate network activity.



1	USB
2	Wired
3	Wireless
4	Link (on LAN connector)
5	Act (on LAN connector)

**Table 5-1 HP Jetdirect ew2500 802.11g Wireless Print Server status lights**

Light	State	Color	Description
USB	Solid	Green	USB cable connected, fully operational.
	Off	—	USB cable not connected, not operational.
	Solid	Yellow	Error condition.
	Blinking	Green	Software attention.
Yellow		Hardware attention.	
Wired	Off	—	<ul style="list-style-type: none"> <li>• Initializing.</li> <li>• Being used in a wireless configuration.</li> <li>• Power is off.</li> </ul>
		Green	Link exists, good signal strength.
		Green	Network activity, good signal strength.
	Blinking (fast)	Green	Test Button pressed, good signal.
Wireless	Off	—	<ul style="list-style-type: none"> <li>• Initializing.</li> <li>• Being used in a wired configuration.</li> <li>• Power is off.</li> </ul>
		Blue	Running a self test, scanning, or there is no link.
		Blue	Wireless link exists, good signal strength.
	Flickering	Amber	Wireless link exists, weak signal strength.
		Blue	Network activity, good signal strength.
	Blinking (fast)	Amber	Network activity, weak signal strength.
		Blue	Test Button pressed, good signal.
	Link	Solid	Green
Off		—	No link.
Act	Solid	Yellow	Network transmission activity.
	Off	—	No activity.

# Unable to communicate with the print server (wireless)

## During initial setup

Verify the following:

- Your wireless computer is configured to match the default wireless network settings on the HP Jetdirect print server:
  - Communication Mode: Ad Hoc
  - Network Name (SSID): hpsetup
  - Encryption (WEP): [Disabled]

---

 **NOTE:** The Network Name (SSID) is case-sensitive.

If the configuration settings are incorrect, connecting to the network might fail.

If the connection fails after entering configuration settings, reset the print server to factory-default settings (“cold reset”) and try again.

---

- The HP Jetdirect print server is turned on and operating properly (print an HP Jetdirect configuration page).
- You are within range of the HP Jetdirect print server.
- There are fewer than six devices total on the Ad Hoc network (with SSID “hpsetup”).
- There is no Access Point in the vicinity that is configured with an SSID of “hpsetup.”
- (For Telnet or HP embedded Web server access) Multiple print servers are not being configured at the same time. If there are, turn all off except the one you want to configure.

## After initial setup

If you have successfully configured the HP Jetdirect wireless print server with a network connection to your network, but your network computers are unable to communicate with the printer (including a “ping” command), try the following:

- Print an HP Jetdirect configuration page and verify all configuration settings for your network. Common errors include incorrect entries for the following items:
  - Communication Mode (Ad Hoc or Infrastructure)
  - Network Name (SSID), which is case-sensitive
  - Authentication method
  - Encryption level, encryption key entries, or the specified transmit key

- IP address
- BSSID (Basic Service Set Identifier), which distinguishes one wireless LAN from another even though they have the same SSID.
- Verify that the printer is within range of the network. See [Improve reception and performance on page 32](#) for more information.
- Use a wireless PC and its utilities to confirm the signal strength at the printer's location. The detected signal strength should be similar for the print server, as indicated on the HP Jetdirect configuration page.

## My configured channel does not match the configuration page

(Ad Hoc mode only) The HP configuration tools allow you to select channel 10 (default) or 11 on the HP Jetdirect wireless print server. This channel is only used by the print server to broadcast its Network Name (SSID) if it fails to detect and join an existing wireless network. If it is able to join a network, it will reconfigure its channel to the one used by the network.

The HP Jetdirect configuration page will identify the network channel actually being used on a network. It does not show the broadcast channel used when a network is not detected.


## Unable to use the HP Install Network Printer Wizard

The HP Install Network Printer Wizard (Windows) is used to configure the wireless network connection settings to access your network.

If you are unable to use this wizard, refer to other options described in the *HP Jetdirect Print Servers Administrator's Guide* for this print server model, supplied on the HP Jetdirect CD-ROM. Other tools available include:

- the HP embedded Web server
- Telnet

---

 **NOTE:** The configurable parameters available through these optional tools may be limited.

---

## Improve reception and performance

Wireless LAN radio signals can penetrate many indoor structures and can reflect around obstacles. However, wireless communication range and performance depends on a variety of factors, including the number of users, the quality and physical placement of the wireless hardware, and the sources of radio signal interference (for example, microwave ovens and cordless telephones use similar frequencies that may interfere with wireless LAN signals). In general, the HP Jetdirect wireless print server data transfer rates will decrease with increasing distance, obstructions and interference.

### For these symptoms

- Wireless status light is amber.
- The signal strength is poor or marginal.
- Print jobs are excessively slow.



### Try these actions

- Reorient the HP Jetdirect print server's location in relation to the Access Point or wireless PC. This might improve reception and performance.
- Reduce or remove sources of interference. Metallic objects can absorb or attenuate radio signals, and devices such as microwave ovens and cordless phones operate using similar radio frequencies.
- Reduce the distance between the printer and the Access Point or wireless PC. This can be accomplished by:
  - moving the print server
  - moving the Access Point or wireless PC
  - adding an additional Access Point (Infrastructure mode only)
- Elevate the Access Point's antenna. In most office environments, elevating the Access Point's antenna will improve the range and performance of all wireless devices.

## Firmware download failure

The HP Jetdirect ew2500 print server provides limited firmware upgrade capabilities. As with other HP Jetdirect print servers, firmware upgrades may be downloaded as available using tools such as HP Download Manager (Windows), HP Web Jetadmin, HP embedded Web server, or FTP (File Transfer Protocol).

If the firmware download fails to complete, you should restart the download without cycling power to the print server.

If power is lost during the download and the print server must be restarted, your next steps depend on whether the print server is configured for server-based authentication.

# A Service and support

- [Hewlett-Packard limited warranty statement](#)
- [Local warranty statements](#)
- [Customer support](#)
- [Product accessibility](#)

## Hewlett-Packard limited warranty statement

HP product	Duration of limited warranty
HP Jetdirect ew2500 print server	1 Year
Software on HP Jetdirect CD-ROM	90 Days

HP warrants to you, the end-user customer, that HP hardware and accessories will be free from defects in materials and workmanship after the date of purchase, for the period specified above. If HP receives notice of such defects during the warranty period, HP will, at its option, either repair or replace products which prove to be defective. Replacement products may be either new or equivalent in performance to new.

HP warrants to you that HP software will not fail to execute its programming instructions after the date of purchase, for the period specified above, due to defects in material and workmanship when properly installed and used. If HP receives notice of such defects during the warranty period, HP will replace software which does not execute its programming instructions due to such defects.

HP does not warrant that the operation of HP products will be uninterrupted or error free. If HP is unable, within a reasonable time, to repair or replace any product to a condition as warranted, you will be entitled to a refund of the purchase price upon prompt return of the product.

HP products may contain remanufactured parts equivalent to new in performance or may have been subject to incidental use.

Warranty does not apply to defects resulting from (a) improper or inadequate maintenance or calibration, (b) software, interfacing, parts or supplies not supplied by HP, (c) unauthorized modification or misuse, (d) operation outside of the published environmental specifications for the product, or (e) improper site preparation or maintenance.

TO THE EXTENT ALLOWED BY LOCAL LAW, THE ABOVE WARRANTIES ARE EXCLUSIVE AND NO OTHER WARRANTY OR CONDITION, WHETHER WRITTEN OR ORAL, IS EXPRESSED OR IMPLIED AND HP SPECIFICALLY DISCLAIMS ANY IMPLIED WARRANTIES OR CONDITIONS OF

MERCHANTABILITY, SATISFACTORY QUALITY, AND FITNESS FOR A PARTICULAR PURPOSE. Some countries/regions, states or provinces do not allow limitations on the duration of an implied warranty, so the above limitation or exclusion might not apply to you. This warranty gives you specific legal rights and you might also have other rights that vary from country/region to country/region, state to state, or province to province.

HP's limited warranty is valid in any country/region or locality where HP has a support presence for this product and where HP has marketed this product. The level of warranty service you receive may vary according to local standards. HP will not alter form, fit or function of the product to make it operate in a country/region for which it was never intended to function for legal or regulatory reasons.

TO THE EXTENT ALLOWED BY LOCAL LAW, THE REMEDIES IN THIS WARRANTY STATEMENT ARE YOUR SOLE AND EXCLUSIVE REMEDIES. EXCEPT AS INDICATED ABOVE, IN NO EVENT WILL HP OR ITS SUPPLIERS BE LIABLE FOR LOSS OF DATA OR FOR DIRECT, SPECIAL, INCIDENTAL, CONSEQUENTIAL (INCLUDING LOST PROFIT OR DATA), OR OTHER DAMAGE, WHETHER BASED IN CONTRACT, TORT, OR OTHERWISE. Some countries/regions, states or provinces do not allow the exclusion or limitation of incidental or consequential damages, so the above limitation or exclusion may not apply to you.

THE WARRANTY TERMS CONTAINED IN THIS STATEMENT, EXCEPT TO THE EXTENT LAWFULLY PERMITTED, DO NOT EXCLUDE, RESTRICT OR MODIFY AND ARE IN ADDITION TO THE MANDATORY STATUTORY RIGHTS APPLICABLE TO THE SALE OF THIS PRODUCT TO YOU.

## Your authorized dealer

If you encounter difficulty, begin by contacting the person who sold you the HP Jetdirect print server to you. Your HP authorized dealer will be familiar with your requirements and can provide assistance.

During the warranty period, HP will replace the unit at no charge provided the defective unit is returned. You may return the unit to your HP authorized dealer or your local HP sales and service office representative. *Be sure to include a copy of your purchase receipt.*

For warranty service on HP Jetdirect products, call HP support. When calling, please have the following information ready:

- HP Jetdirect product you are calling about.
- Model number of the product.
- Serial number of the product.
- Complete description of the problem.
- Proof of purchase of your product.
- Your shipping address.

The HP support representative will help you with troubleshooting, and advise you on warranty service.

## Service billing (out of warranty)

When ordering a replacement unit for out-of-warranty service, you may be charged a repair cost. See your HP authorized dealer or your local HP sales and service office representative. Or, you can call HP at (800) 227-8164 (USA only).

## Service outside the USA

Customers outside the USA should contact their HP authorized dealer or HP sales and service office to obtain information on prices, exchange unit availability and instructions.

## Local warranty statements

### Australia and New Zealand

For consumer transactions in Australia and New Zealand: The warranty terms contained herein except to the extent lawfully permitted, do not exclude, restrict, or modify and are in addition to the mandatory statutory rights applicable to the sale of this product to you.

## Customer support

For warranty information, see [Hewlett-Packard limited warranty statement on page 34](#).

For advanced configuration topics and other information, see the *HP Jetdirect Print Servers Administrator's Guide* this print server model (on the HP Jetdirect CD-ROM).

For release notes, see the Readme file in the root directory of the HP Jetdirect CD-ROM.

## HP support online

Click your way to a quick solution! The HP Web site at [www.hp.com/support/net\\_printing](http://www.hp.com/support/net_printing) is a great place to start for information about your HP Jetdirect print server – 24 hours a day, 7 days a week.

For the latest HP Jetdirect installation software and documentation, visit [www.hp.com/go/inpw\\_sw](http://www.hp.com/go/inpw_sw).

For the latest firmware for your HP Jetdirect print server, visit [www.hp.com/go/webjetadmin\\_firmware](http://www.hp.com/go/webjetadmin_firmware).


## HP support by phone

Highly trained technicians are ready to take your call.

For toll-free phone support in the USA and Canada, call HP support at: 1-800-HPINVENT (1-800-474-6836)

For the most recent HP support telephone numbers and available services worldwide, visit [www.hp.com/support](http://www.hp.com/support).

---

 **NOTE:** The phone numbers listed may not be toll-free. Telephone fees are the responsibility of the caller. Rates may vary. Contact your local telephone company for current rates.

---

## Product accessibility

For information on our commitment to accessibility of HP Jetdirect print server products:

- Visit the HP Web site at [www.hp.com/accessibility](http://www.hp.com/accessibility).
- Send an email message to: [accessibility@hp.com](mailto:accessibility@hp.com).

---

## B Solution summary

- [HP support software](#)
- [Embedded services](#)
- [Supported network protocols](#)

### HP support software

**Table B-1 HP support software**

- 
- HP Web Jetadmin software (TCP/IP and IPX networks)
  - HP embedded Web server
  - HP network printing setup software
    - HP Install Network Printer Wizard (Windows)
    - HP LaserJet Utility for Macintosh (Mac OS)
- 

### Embedded services

Key services embedded in the HP Jetdirect ew2500 print server are listed below. For the latest features and services, visit [www.hp.com/go/jetdirect](http://www.hp.com/go/jetdirect).

**Table B-2 Embedded services**

- 
- Configuration and management
    - BootP/DHCP (IPv4 only)
    - DHCPv6
    - TFTP (IPv4 only)
    - Web Proxy (Automatic/Manual cURL)
    - LLMNR
    - Telnet (IPv4 only)
    - SNMP (v1, v2c, v3) agents
    - Bonjour (for Mac OS X)
    - FTP (File Transfer Protocol)
    - WS Discovery (Microsoft Web Services)
-

- HP embedded Web server, HTTP (TCP port 80)
- HP embedded Web server, HTTPS (TCP port 443)
- IP Security (IPsec)
- Fleet configuration
- Printing
  - Raw IP printing (HP-proprietary TCP ports 9100, 9101, 9102)
  - LPD printing (TCP port 515)
  - IPP printing (TCP port 631)
  - FTP printing (TCP ports 20, 21)
  - WS Print (Microsoft Web Services)
- Security
  - SNMP v3
  - SSL/TLS
  - 802.1X authentication: WEP, WPA, WPA2, LEAP, PEAP, and EAP-TLS
  - Firewall
- Supported Web browsers (for HP embedded Web server)
  - Microsoft Internet Explorer 6.x and higher
  - Firefox 2.x and higher
  - Opera 9.0 and higher
  - Safari 2.0 and higher

## Supported network protocols

The supported network protocols, and popular network printing environments that use those protocols, are listed below.

**Table B-3 Supported network protocols**

Supported network protocols	Typical network printing environments <sup>1</sup>
TCP/IPv4	(Direct Mode printing) Microsoft Windows XP (32-bit and 64-bit), Vista (64-bit), Server 2003 (32-bit and 64-bit), and Server 2008 (32-bit and 64-bit)  Microsoft Terminal Server and Citrix MetaFrame environments <sup>2</sup>  Novell NetWare <sup>2</sup> 5, 6.x  Mac OS 10.2 and later  UNIX and Linux, including: Hewlett-Packard HP-UX 10.2, 11.x, 11.i, Sun Microsystems Solaris 2.5 and later (SPARCsystems only), IBM AIX 3.2.5 and later <sup>2</sup> , HP MPE-iX <sup>2</sup> , RedHat Linux 7.x and later <sup>2</sup> , SuSE Linux 8.x and later <sup>2</sup>  LPR/LPD (Line Printer Daemon, RFC 1179-compliant) systems <sup>2</sup>

**Table B-3 Supported network protocols (continued)**

Supported network protocols	Typical network printing environments <sup>1</sup>
	IPP (Internet Printing Protocol)
	FTP (File Transfer Protocol) printing
TCP/IPv6	Microsoft Windows XP (32-bit and 64-bit), Vista (64-bit), Server 2003 (32-bit and 64-bit), and Server 2008 (32-bit and 64-bit), Direct Mode port 9100 printing (Requires HP IPv6/IPv4 port monitor software running on the system.)
	Mac OS 10.2 and later
	LPR/LPD (Line Printer Daemon, RFC 1179-compliant) systems with IPv6 client support
	IPP (Internet Printing Protocol) systems with IPv6 client support
	FTP (File Transfer Protocol) printing
IPX/SPX and compatible	Novell NetWare 5, 6.x <sup>2</sup>
	Microsoft Windows XP (32-bit only), Direct Mode printing
Other protocols	Novell NetWare NDS, Bindery, NDPS, and iPrint
DLC/LLC	DLC/LLC protocols are provided for legacy systems that may require support <sup>2</sup>
AppleTalk	Mac OS

<sup>1</sup> Refer to the current HP Jetdirect product data sheets for additional network systems and versions. For operation with other network environments, consult your system vendor or authorized HP dealer.

<sup>2</sup> Contact your network system vendor for software, documentation, and support.

# C Specifications

- [Electrical \(power adapter\)](#)
- [Environmental](#)
- [Electromagnetic](#)
- [Acoustic](#)
- [Radio characteristics](#)
- [Safety](#)
- [Wireless telecommunications](#)

## Electrical (power adapter)

The following lists the power adapters for the HP Jetdirect ew2500 print server.

Power Adapters for J8021A		
Location	Power Adapter*	Power Cord Assembly**
USA and Canada, Latin America 120 Vac (except as noted below)	0957-2228	None
	0957-2229	8121-1023
Latin America 100-240 Vac (except as noted below), Continental Europe (except as noted below), South Korea	0957-2229	8121-1015
Denmark	0957-2229	8121-1011
Chile	0957-2229	8121-1012
India	0957-2229	8121-1013
Brazil	0957-2229	8121-1014
Australia and New Zealand	0957-2229	8121-1016
United Kingdom, Ireland, Hong Kong SAR, Singapore	0957-2229	8121-1017
Japan	0957-2229	8121-1018
China	0957-2229	8121-1019
Taiwan	0957-2229	8121-1020
Argentina	0957-2229	8121-1021



---

## Power Adapters for J8021A

---

Location	Power Adapter*	Power Cord Assembly**
Switzerland	0957-2229	8121-1022
South Africa	0957-2229	8121-1028
Israel	0957-2229	8121-1032
Malaysia	0957-2229	8121-1017

\* 0957-2228 Power adapter, AC-DC, 15W, USA wall adapter. 0957-2229 and 0957-2234 power adapter, AC-DC, 15W, Universal In-Line adapter.

\*\* 3-conductor, 0.5 meter power cords. For optional power cord lengths, contact HP Support.

---

## Environmental

	Operating	Non-Operating
Temperature	0° to 55° C (32° to 131° F)	-40° to 70° C (-40° to 158° F)
Relative humidity (non-condensing)	15% to 95% at 40° C (104° F)	15% to 95% at 65° C (149° F)
Maximum altitude	4.6 km (15,000 ft)	4.6 km (15,000 ft)

---

## Electromagnetic

- FCC Title 47 CFR Part 15 Class B for Ethernet (USA)
  - ICES-003 Class B (Canada)
  - VCCI Class B (Japan)
  - AS/NZS3548 Class B (Australia, New Zealand)
  - CISPR-22 Class B (1997)\* (International, Europe)
  - CNS 13438 Class B (Taiwan)
  - Korean EMI Law, No. 1996-98 Class B (Korea)
- 

## Acoustic

Not applicable.

# Radio characteristics

## HP subassemblies

The HP Jetdirect ew2500 print server is designed for operation with radio frequencies in the license-free 2.4 GHz band. However, due to local radio regulations and restrictions, the radio characteristics of your particular HP Jetdirect print server can vary according to the location in which the product is used.

## Channel frequencies

The channel frequencies are listed below:

Channel	Frequency (MHz)	Channel	Frequency (MHz)
1	2412	8	2447
2	2417	9	2452
3	2422	10	2457
4	2427	11	2462
5	2432	12	2467
6	2437	13	2472
7	2442	14 (Japan only)	2484

## Safety

Product complies with:

- EN60950–1 (2001)

## Wireless telecommunications

This product complies with:

- EN 300 328
- EN 301 489–17
- FCC 15.247

---

## D Regulatory statements

- [FCC statement](#)
- [Regulatory Model Identification Number](#)
- [Canada](#)
- [VCCI \(Japan\)](#)
- [RRL statement \(Korea\)](#)
- [Regulatory wireless statements](#)

### FCC statement

The United States Federal Communications Commission (in 47 CFR 15.105) has specified that the following notice be brought to the attention of users of this product.

This equipment has been tested and found to comply with the limits for a Class B digital device, pursuant to Part 15 of the FCC Rules. These limits are designed to provide reasonable protection against harmful interference in a residential installation. This equipment generates, uses and can radiate radio frequency energy and, if not installed and used in accordance with the instructions, may cause harmful interference to radio communications. However, there is no guarantee that interference will not occur in a particular installation. If this equipment does cause harmful interference to radio or television reception, which can be determined by turning the equipment off and on, the user is encouraged to try to correct the interference by one or more of the following measures:

1. Reorient the receiving antenna.
2. Increase the separation between the equipment and the receiver.
3. Connect the equipment into an outlet on a circuit different from that to which the receiver is connected.
4. Consult the dealer or an experienced radio/TV technician for help.

For further information, contact:

Manager of Corporate Product Regulations, Hewlett-Packard Company, 3000 Hanover Street, Palo Alto, California 94304, (650) 857-1501

Modifications (part 15.21)

The FCC requires the user to be notified that any changes or modifications made to this device that are not expressly approved by HP may void the user's authority to operate the equipment.

This device complies with Part 15 of the FCC Rules. Operation is subject to the following two conditions: (1) this device may not cause harmful interference, and (2) this device must accept any interference received, including interference that may cause undesired operation.

## Regulatory Model Identification Number

For regulatory identification purposes, this product is assigned a Regulatory Model Number. The Regulatory Model Number for your product is RSVLD-0802. The regulatory number should not be confused with the HP marketing model number (for example, HP Jetdirect ew2500) or the HP product number (J8021A).

## Canada

This Class B digital apparatus complies with Canadian ICES-003.

Cet appareil numérique de la classe B est conforme à la norme NMB-003 du Canada.

## VCCI (Japan)

Class B

この装置は、情報処理装置等電波障害自主規制協議会（VCCI）の基準に基づくクラスB情報技術装置です。この装置は、家庭環境で使用することを目的としていますが、この装置がラジオやテレビジョン受信機に近接して使用されると、受信障害を引き起こすことがあります。  
取扱説明書に従って正しい取り扱いをして下さい。

## RRL statement (Korea)

Class B

B급 기기 (가정용 방송통신기기)	이 기기는 가정용(B급)으로 전자파적합등록을 한 기기로서 주로 가정에서 사용하는 것을 목적으로 하며, 모든 지역에서 사용할 수 있습니다.
-----------------------	--

# Regulatory wireless statements

- [Exposure to radio frequency radiation](#)
- [Notice to users in Argentina](#)
- [Notice to users in Brazil](#)
- [Notice to users in Canada](#)
- [European Union regulatory notice](#)
- [Notice to users in Indonesia](#)
- [Notice to users in Korea](#)
- [Notice to users in Mexico](#)
- [Notice to users in Pakistan](#)
- [Notice to users in Singapore](#)
- [Notice to users in South Africa](#)
- [Notice to users in Taiwan](#)

## Exposure to radio frequency radiation

---

**CAUTION:** The radiated output power of this device is far below the FCC radio frequency exposure limits. Nevertheless, the device shall be used in such a manner that the potential for human contact during normal operation is minimized. This product and any attached external antenna, if supported, shall be placed in such a manner to minimize the potential for human contact during normal operation. In order to avoid the possibility of exceeding the FCC radio frequency exposure limits, human proximity to the antenna shall not be less than 20 cm (8 inches) during normal operation.

---

## Notice to users in Argentina

CNC:C-5478

## Notice to users in Brazil

**Aviso aos usuários no Brasil** Este equipamento opera em caráter secundário, isto é, não tem direito à proteção contra interferência prejudicial, mesmo de estações do mesmo tipo, e não pode causar interferência a sistemas operando em caráter primário.



## Notice to users in Canada

### Notice to users in Canada/Note à l'attention des utilisateurs canadiens

**For Indoor Use.** This digital apparatus does not exceed the Class B limits for radio noise emissions from the digital apparatus set out in the Radio Interference Regulations of the Canadian Department of Communications. The internal wireless radio complies with RSS 210 and RSS GEN of Industry Canada.

**Utiliser à l'intérieur.** Le présent appareil numérique n'émet pas de bruit radioélectrique dépassant les limites applicables aux appareils numériques de la classe B prescrites dans le Règlement sur le brouillage radioélectrique édicté par le ministère des Communications du Canada. Le composant RF interne est conforme à la norme RSS-210 and RSS GEN d'Industrie Canada.

## European Union regulatory notice

This product complies with the following EU Directives:

- Low Voltage Directive 2006/95/EC
- EMC Directive 2004/108/EC

Note: CE compliance of this product is valid only if powered with the correct CE-marked AC adapter provided by HP.

If this product has telecommunications functionality, it also complies with the essential requirements of:

- R&TTE Directive 1999/5/EC

Compliance with these directives implies conformity to harmonized European standards (European Norms) that are listed in the EU Declaration of Conformity issued by Hewlett-Packard for this product or product family. This compliance is indicated by the following conformity marking placed on the product.



The telecommunications functionality of this product may be used in the following EU and EFTA countries/regions:

Austria, Belgium, Bulgaria, Cyprus, Czech Republic, Denmark, Estonia, Finland, France, Germany, Greece, Hungary, Iceland, Ireland, Italy, Latvia, Liechtenstein, Lithuania, Luxembourg, Malta, Netherlands, Norway, Poland, Portugal, Romania, Slovak Republic, Slovenia, Spain, Sweden, Switzerland, and United Kingdom.

### Notice for France for use of 2.4 GHz wireless communication:

L'utilisation de cet équipement (2.4GHz Wireless LAN) est soumise à certaines restrictions: Cet équipement peut être utilisé à l'intérieur d'un bâtiment en utilisant toutes les fréquences de 2400 à 2483.5MHz (Chaîne 1-13). Pour une utilisation en environnement extérieur, vous devez utiliser les fréquences comprises entre 2400-2454 MHz (Chaîne 1-9). Pour les dernières restrictions, voir [www.arcep.fr](http://www.arcep.fr)

For 2.4 GHz Wireless LAN operation of this product certain restrictions apply: This product may be used indoor for the entire 2400-2483.5 MHz frequency band (channels 1-13). For outdoor use, only 2400-2454 MHz frequency band (channels 1-9) may be used. For the latest requirements, see [www.arcep.fr](http://www.arcep.fr)

### Contact for European regulatory topics:

### Notice to users in Indonesia

04768/POSTEL/2007  
1835

### Notice to users in Korea

당해 무선설비는 운용 중 전파혼선 가능성이 있음

### Notice to users in Mexico

No. de homologacion: SCT RCPHPRS07-310

### Notice to users in Pakistan



### Notice to users in Singapore

Complies with  
IDA Standards  
DB100427

### Notice to users in South Africa



## Notice to users in Taiwan

### 低功率電波輻射性電機管理辦法

第十二條 經型式認證合格之低功率射頻電機，非經許可，公司、商號或使用者均不得擅自變更頻率、加大功率或變更原設計之特性及功能。

第十四條 低功率射頻電機之使用不得影響飛航安全及干擾合法通信；經發現有干擾現象時，應立即停用，並改善至無干擾時方得繼續使用。

前項合法通信，指依電信規定作業之無線電信。低功率射頻電機須忍受合法通信或工業、科學及醫療用電波輻射性電機設備之干擾。





© 2009 Hewlett-Packard Development Company, L.P.

[www.hp.com](http://www.hp.com)

