

PIXMA MP750 and MP780 All-in-One Printers

Canon

advanced simplicity®



**High performance photo printing, copying,
scanning and faxing* – for your home or office.**



PIXMA

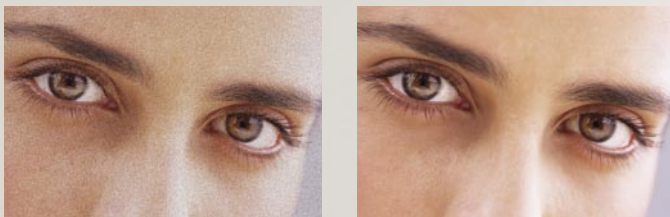
PIXMA MP750 and MP780 All-in-One Printers

PIXMA – A REVOLUTION IN PRINTING

Canon's heritage and expertise in photographic, copier and print-head technology have combined to create a new revolution in printing – PIXMA. The new PIXMA range of printers provides exceptional quality, high-speed and reliability for home, office and professional printing.

FINE TECHNOLOGY FOR PERFECT IMAGES, EVERY TIME

The PIXMA MP750 and MP780 All-in-One printers feature Canon's unique print-head technology FINE (Full-photolithography Inkjet Nozzle Engineering) – a new ink ejection system that separates and ejects the prescribed volume of ink droplets precisely and consistently onto the page, resulting in sharper, more detailed images.



2 picolitre FINE technology eliminates graininess to produce razor-sharp images

FAST PRINTING AND ADVANCED PAPER HANDLING

- Prints up to 25 ppm black and 17 ppm in colour.¹
- Includes a dual paper-path, so that paper can be loaded into both the auto sheet-feeder (ASF) and the front cassette – perfect for switching between plain paper and photo paper.
- Paper can be fed and ejected at the front, so the printer can be positioned against a wall to save you space.
- Automatic duplex printing enables double-sided printing for greater convenience and economy.
- Quickly and easily prints high-quality images and text directly onto printable CD-R and DVD-R media, via a convenient front-loading tray.²
- Large 300 sheet plain paper capacity.



Front cassette paper feeding



Prints directly on CD-R and DVD-R media

BRILLIANT QUALITY PHOTO PRINTING

- Produces high-resolution photo prints at up to 4800 x 1200 dpi.³
- 2 picolitre FINE print-head technology results in sharp images with enhanced detail.
- Prints directly from compatible digital cameras using Bubble Jet Direct or PictBridge, the industry standard for direct printing – no computer required.⁴
- Creates true borderless 6" x 4", 5" x 7" and A4 size photos.⁵
- The ContrastPLUS 5 individual ink tank system gives your photos greater colour contrast.



Direct Printing (camera not included)



4-colour model



PIXMA MP750 and MP780 with photo black for heightened contrast

COPYING MADE EASY

- Copies up to 25 cpm black and 17 cpm colour.¹
- 35 page Automatic Document Feeder (ADF) for added convenience.
- Copies up to 99 pages at a time.
- Allows you to reduce or enlarge copies, from 25% right up to 400%.
- With the 2-in-1 copy feature, you can minimise two A4 sized images and copy them onto the one A4 page.
- Other copier functions include Duplex copy, Paper Sorting copy (ADF only), Borderless copy,⁵ Image Repeat copy and Auto Magnification copy.

HIGH-QUALITY SCANNING

- Scans images at up to 2400 x 4800 dpi (9600 dpi optimised⁶).
- Superior colour depth is produced with 48 bit input and 24 bit output.
- Easy access to scanning features via the MP Navigator.
- Multi-photo mode allows you to scan more than one image at a time and save them as separate files.⁷
- Scan-to-PDF and scan-to-email allows you the option of scanning an image or document straight into a PDF format or attaching it to an email.⁹

CONVENIENT FAXING WITH THE MP780

- Up to 3 seconds per page faxing with the 33.6 kbps modem.⁹
- Memory stores up to 250 pages, so you won't lose a message, even if your paper or ink runs out.
- Features 8 one-touch and 100 coded dials for speed and ease of use.
- Automatic FAX/TEL switching between telephone and fax and is compatible with Telstra's FaxStream Duet.
- PC fax capabilities give you the extra convenience of sending a fax directly from your computer (Windows[®] only).
- Enjoy colour-to-colour faxing.
- Also available are automatic redial, activity reporting and answering machine connectivity.



Automatic Document Feeder: holds up to 35 sheets



MP Navigator



Multi-photo mode⁷



Up to 3 seconds per page faxing⁹

EASY-TO-USE SOFTWARE AND HIGH-SPEED INTERFACE

- **Easy-PhotoPrint** – Easy-to-use application for printing out digital photos, retouching portraits and lab-quality trimming.



- **Easy-WebPrint** – Automatically adjusts the size of the webpage you want to print to ensure it fits on a sheet perfectly, eliminating waste and frustration.¹⁰
- **CD-LabelPrint** – Allows quick and easy printing directly onto printable CD-R and DVD-R media.
- **Other software included** – Scan Soft® OmniPage® SE and Presto!PageManager.
- The USB 2.0 high-speed interface ensures fast data transfer, so you won't waste time waiting.¹¹

CHOOSE FROM GENUINE CANON PAPER AND INKS

To get the most brilliant results from your Canon printer, we recommend you use genuine Canon papers and inks. Canon papers and inks are designed to complement the new FINE print-head technology, so when used together, you're assured optimal quality and longevity of photos, print after print.

- Print on a wide variety of paper types, including Photo Paper Pro, Photo Paper Plus Glossy, Matte Photo Paper and Photo Paper Plus Semi-gloss.
- Enjoy duplex printing using Photo Paper Plus Double Sided.
- Accepts credit card size Glossy Photo Paper, so you can produce professional looking business cards.
- Photo Paper Pro's glossy surface allows for greater ink absorption, resulting in clear, detailed images when used with Canon ink.
- Photo Paper Pro now gives you up to 100 years' permanence, producing prints which will last well over a lifetime when stored in a photo album.¹²



One solution for all your home or office needs.



COPY



SCAN



PRINT



FAX*

*MP780 model only.

PIXMA MP750 & MP780 All-in-One Printer Specifications

MACHINE TYPE Available Functions	PIXMA All-in-One Print, Copy, Scan, Fax* and Camera Direct printing
PRINTER FUNCTIONS Printing Method	Bubble Jet ink-on-demand with FINE (Full-photolithography Inkjet Nozzle Engineering) technology
Printing Speed¹ Printing Resolution³ Borderless Printing⁵ Ink Tanks	Mono: up to 25 ppm [†] Colour: up to 17 ppm ^{††} Up to 4800 x 1200 dpi 6" x 4", 5" x 7" & A4 size BCI-3eBk – Black ink tank, BCI-6C/M/Y/Bk – Individual colour ink tanks
Ink Yield	Black (BCI-3eBk): approx. 740 pages* / approx. 1500 pages** Black (BCI-6Bk): approx. 2000 pages** Colour: Cyan: approx. 550 / Magenta: approx. 430 / Yellow: approx. 360 pages ** 300 sheets (ASF + Paper Cassette)
Paper Capacity Approx. Paper Handling (ASF / Paper Cassette)	Plain Paper - 13mm: 150 / 150 Super White Paper - 13mm (SW-201): 100 / 100 High Resolution Paper (HR-101N): 80 / 80 Photo Paper Pro (PR-101): A4: 10, 6" x 4": 20 / A4: 10, 6" x 4": 20 Photo Paper Plus Glossy (PP-101): A4/ 5" x 7": 10, 6" x 4": 20 / A4/ 5" x 7": 10, 6" x 4": 20 Photo Paper Plus Semi-gloss (SG-101): A4: 10, 6" x 4": 20 / A4: 10, 6" x 4": 20 Glossy Photo Paper (GP-401): A4: 10, 6" x 4"/Credit card: 20 / A4: 10, 6" x 4": 20 Matte Photo Paper (MP-101): A4: 10 / A4: 10 Photo Paper Plus Double sided (PP-101D): A4/ 5" x 7": 10 / A4/ 5" x 7": 10 Photo Stickers (PS-101): 1 / N/A Envelopes (DL, Com#10): 10 / 5 Transparencies (CF-102): 30 / 30 T-Shirt Transfers (TR-301): 1 / 1
Paper Size Media Weight	A4, Letter, Legal, A5, B5, Envelopes (DL, COM10), 4" x 6", 5" x 7" 64-105g/m ² (supports Photo Paper Plus Double sided PP-101D 273g/m ²)
COPIER FUNCTIONS Colour Copy Image Quality Copy Speed¹ Multiple Copy Reduction/Enlargement Borderless Copy⁵ Special Copy Functions	Yes 3 positions: Fast, Normal, Fine (Photo) Mono: up to 25 cpm Colour: up to 17 cpm Up to 99 copies for both mono and colour 25% to 400% Yes Duplex, Paper Sorting (ADF only), Borderless ⁵ , 2-in-1, Image Repeat & Auto Magnification

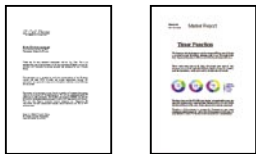
*Black text: 1500 characters per page, normal text, at default and plain paper mode with Windows XP using Word 2003.

**Colour: based on printing ISO/JIS-SCID no. 5 pattern at default and plain paper mode with Windows XP using Adobe® Photoshop 7.0

SCANNER FUNCTIONS Scanner Type Scanner Resolution⁶ Colour Scanning Depth	Flatbed Colour Scanner by CCD (Charge Coupled Device) 2400 x 4800 dpi (9600 dpi optimised) 48 bit input and 24 bit output
FAX FUNCTIONS (MP780 only) Standalone Fax Transmission Speed	Yes Mono: approx. 3 secs per page ⁹ Colour: approx. 1 minute per page (based on Canon Colour Test sheet) Super G3 33.6 Kbps
Modem Speed PC Fax (Windows only) Compression Method Image Processing System Fax Memory Speed Dials Standard Features	Yes (transmission only) Mono: MH, MR, MMR. Colour: JPEG UHQ (Ultra High Quality) Approx. 250 pages One touch: 8 locations. Coded dials: 100 locations Manual transmission, Sequential Broadcasting (max.109 destinations), Group Dialling (107 destinations), Fax/Tel auto-switching (with Pseudo-CI), Answering machine connection, Remote FAX receiving, Dual access, Automatic redialling, Tone dialling, TTI (Transmitter Terminal Identification), Activity Management Report
PC INTERFACE & SOFTWARE Interface Type¹¹ Supported OS	USB 2.0 Hi-speed Windows 98/2000/Me/XP and Mac OS.X (10.2.4 or later)
BUNDLED SOFTWARE Windows⁸ Macintosh⁸	Easy-PhotoPrint, Easy-WebPrint, CD-LabelPrint, ScanSoft® OmniPage® SE, Presto!PageManager Easy-PhotoPrint, ScanSoft® OmniPage® SE, CD-LabelPrint
GENERAL FEATURES ADF Weight Power Source Power Consumption Dimensions (W x D x H)	A4: 35 sheets MP750: 13.5kg MP780: 13.7kg AC 100 – 240V, 50 – 60Hz (120V) Max: Approx. 50W, Standby: Approx. 22W; (240V) Max: Approx. 53W, Standby: Approx. 27W 486 x 472 x 314 mm (minimum dimensions with paper trays and other extensions closed)
Included as Standard	PIXMA MP780 All-in-One, Individual ink tanks (BCI-3eBk, BCI-6C, BCI-6M, BCI-6Y, BCI-6Bk), Print-head, Power Cord, Phone Cord,* CD-R Tray, Set-up and Software CD-ROM, Quick Start Guide

#MP780 only

PRINT SPEED GUIDES



†
Black Text
(MEMO) A4

††
Text & Photo
A4



Canon Australia Pty. Ltd.
ABN 66 005 002 951

1 Thomas Holt Drive,
North Ryde, NSW 2113, Australia
Freecall: 1800 021 167
Facsimile No: + 61 2 9805 2632

Canon New Zealand Limited
Akoranga Business Park, Akoranga Drive
Northcote, Auckland, New Zealand
Freecall: 0800 222 666
Facsimile No: + 64 9 489 0380

canon.com.au
canon.co.nz
canon.com.au/digitalimage

Canon is a registered trademark of Canon Inc. and 'advanced simplicity' is a registered trademark of Canon Australia Pty Limited. PIXMA and the PIXMA logo are trademarks of Canon Inc. Microsoft, Windows and the Windows logo are registered trademarks of Microsoft Corporation in the United States and in other countries. All other trademarks are the property of their respective owners.



The 1 year warranty can be upgraded to 3 years for a minimal cost and is backed by Canon's Customer Care Info-Line support. Driver updates and Technical Support are also available from our websites – canon.com.au or canon.co.nz

- Print and copy speed dependent on the complexity of the document being printed, type of paper used and does not take into account data processing time on host computer.
- Requires CD-R/DVD-R media with inkjet compatible printing surface – check suitability before attempting to print on the media.
- Ink droplets can be placed with a pitch of 1/4800 inch at minimum.
- PictBridge camera direct and Bubble Jet Direct printing requires PictBridge or Bubble Jet Direct compatible digital cameras in order to function. Check with your digital camera manufacturer or users guide to determine PictBridge or Bubble Jet Direct compatibility.
- Recommended paper types for borderless printing and copying are Photo Paper Pro, Photo Paper Plus Glossy, Photo Paper Plus Semi-gloss, Glossy Photo Paper, Matte Photo Paper and Photo Paper Plus Double Sided.
- Increased resolution is a function of the ScanGear CS driver software.
- There are parameters to follow for positioning items on scanner.
- Where this service is available from your service provider.
- Based on Canon Standard Fax Chart No. 1 in standard mode.
- Easy-WebPrint requires Microsoft Internet Explorer version 5.5, version 6.0 recommended.
- USB 2.0 Hi-Speed performance requires Windows XP with Service Pack 1 or Windows 2000 with Service Pack 4 with pre-installed USB 2.0 port.
- 100 Years' Life in a Photo Album. Kept in a photo album, shut out light and air (gas), temperature 23 degrees and 50% humidity. Predicted value from the accelerated test. When printed with genuine Canon inks on Photo Paper Pro. Result may vary based on individual environmental factors. For more information, please visit canon.com.au/news/story_565.html

All data based on Canon's Standard Test Method. All specifications are subject to change without notice.

Camera shown to demonstrate PictBridge functionality is not included with the PIXMA MP750 or MP780 All-in-One printer.

Canon Australia proudly supports recycling of printer cartridges through the Cartridges 4 Planet Ark programme.

