

Olivetti

d-Copia 5001MF & d-Copia 6001MF Sales Guide v 1.0



Model(s)	d-Copia 5001MF	d-Copia 6001MF
Type	A4 Colour MFP	
Target	Small Office Workgroups requiring Professional functionalities	
Launch Date*	September 2019	September 2019
Speed	50 ppm Mono	60 ppm Mono
Replaces	d-Copia 5000MF	d-Copia 6000MF
OEM	Kyocera TASKalfa 5003i	Kyocera TASKalfa 6003i

Product Manager: Marco Valle, **Marketing Manager:** Nadia Bontempo
Marketing Director: Giorgio Sangalli

Olivetti d-Copia 5001MF & d-Copia 6001MF Sales Guide V1.0 / E&OE
Olivetti UK Agency

**Launch dates may be subject to change.*

Table of Contents

Page:

1	General Information	
	1.1 - Introduction	5
	1.2 - d-Copia 5001MF/6001MF at a glance.	6
	1.3 - Products Road Map & Positioning	7
2	New Features - d-Copia 5001MF/ d-Copia 6001MF	
	2.1 - Increased Security	8
	2.2 - Improved Usability	9
	2.3 - Human Detector Sensor (Motion Sensor)	10
	2.4 - Barcode Recognition	10
	2.5 - Sharing Address Books (Migrating the Address Book)	10
	2.6 - Share Box	10
	2.7 - Finisher Function Enhancement	11
	2.8 - Improved Scanner Functionality	11
3	Other Selling Points	
	3.1 - Easy and Fast Maintenance	12
	3.2 - Toner Container Lock	12
	3.3 - Reusable Black Toner Container	12
	3.4 - High Standard Print Resolution	13
	3.5 - Toner with low melting point	13
	3.6 - High Resolution printing at rated Speed	13
	3.7 - Solid State Drive	13
	3.8 - Waste Reduction due to Long Life Units	14
	3.9 - Advanced Paper Handling	14
	3.10 - Innovative Device Handling	15
	3.11 - Mobile Connectivity	15
	3.12 - Enhanced Standard Security	16
4	New Models comparison with Preceding Models	
	Comparison d-Copia 5001MF versus d-Copia 5000MF	17 - 19
	Comparison d-Copia 6001MF versus d-Copia 6000MF	20 - 21
5	Product Configuration – Commonly Shared options	22 – 23
	5.1 - Products Codes d-Copia 5001MF/ d-Copia 6001MF	
	5.1.1 - Basic Units	24
	5.1.2 - Options	24 – 26
	5.1.3 - Consumables	27
	5.2 - Options Configuration Chart d-Copia 5001/ d-Copia 6001MF	28
	5.3 - Minimum Configuration requirements	29
	5.4 - Package of Basic Units	30
	5.5 - Main Units & Options Package Dimensions and Weights	31 – 32
	5.6 - Consumables Codes, Package Dimensions and Weights	32

6	Specification	
6.1.	- Main Units : d-Copia 5001MF / d-Copia 6001MF	33 – 35
6.2.	- Printer Functions	35
6.3.	- Scanner Functions	36
6.4.	- Document Feeders DP-7100, DP-7110, DP-7130	36
6.5.	- Paper Cassette PF-7100	37
6.6.	- Paper Cassette PF-7110	37
6.7.	- Side-Mount High-Capacity Paper Cassette PF-7120	37
6.8.	- Inner Finisher DF-7100	38
6.9.	- Hole Punch Unit PH-7120/PH-7130 for DF-7100	38
6.10.	- Finisher DF-7120	39
6.11.	- Finisher DF-7110	40
6.12.	- Finisher DF-7130	41
6.13.	- Hole Punch Unit PH-7C/D for DF-7110, DF-7120, DF-7130	41
6.14.	- Mailbox Unit MT-730(B) for Finisher DF-7110	42
6.15.	- Folding Unit BF-730 for Finisher DF-7110	42
6.16.	- Folding Unit BF-9100 for Finisher DF-7130	43
6.17.	- Job Separator JS-7100	44
6.18.	- Banner Guide 10	44
6.19.	- Fax System 12	45
6.20.	- NK-7120 "Optional Numeric Keypad"	45
6.21.	- DT-730 (B) "Document Table"	45
6.22.	- Keyboard Holder 10 "Keyboard Holder"	45
6.23.	- IB-50 "Network Interface Kit"	46
6.24.	- IB-51 "Wireless Network Interface Kit"	46
6.25.	- IB-35 "Wireless Network Interface Kit"	46
6.26.	- Internet Fax Kit(A)	46
6.27.	- UG-33 "ThinPrint Option"	46
6.28.	- UG-34 "Emulation Upgrade Kit"	46
6.29.	- Scan Extension Kit(A)	46
7	Products Library	47
7.1	- Printer Drivers for Windows	48
7.2	- Other Printer Drivers	48
7.3	- Fax & Scanner Drivers	49
7.4	- Software Utilities	49
7.5	- Software Utilities by function	50
7.6	- User Guides	50
8	Dimensions	51
9	Marketing Material	52

10	Service	52
11	Quality Approvals	52
12	CE Declaration of Conformity	52
13	Competitors to the d-Copia 5001MF	53
	d-Copia 5001MF vs Canon ImageRUNNER ADVANCE 4551i III	54 – 55
	d-Copia 5001MF vs HP LaserJet Managed MFP E52550dn	55
	d-Copia 5001MF vs Konica-Minolta Bizhub 558e	58 – 59
	d-Copia 5001MF vs Lexmark MX910de	60 – 61
	d-Copia 5001MF vs Ricoh MP 5055ASP	62 – 63
	d-Copia 5001MF vs Samsung MultiExpress K7500GX	64 – 65
	d-Copia 5001MF vs Toshiba e-STUDIO5018A	66 – 67
	d-Copia 5001MF vs Xerox AltaLink B8045	68 – 69
14	Competitors to the d-Copia 6001MF	70
	d-Copia 6001MF vs Canon ImageRUNNER ADVANCE 6555i III	71 – 72
	d-Copia 6001MF vs Konica-Minolta Bizhub 558e	73 – 74
	d-Copia 6001MF vs Lexmark MX911de	75 – 76
	d-Copia 6001MF vs Ricoh 6055SP	77 – 78
	d-Copia 6001MF vs Samsung MultiXpress K7600LX	79 – 80
	d-Copia 6001MF vs Sharp MX-M6050	81 – 82
	d-Copia 6001MF vs Toshiba e-STUDIO6518A	83 – 84
	d-Copia 6001MF vs Xerox AltaLink B8055	85 – 86

1. General Information

1.1 - Introduction

This Sales Guide features two new A3 monochrome MFP models:

- **d-Copia 5001MF and d-Copia 6001MF;**

These models are the as successor the existing **d-Copia 5000MF and d-Copia 6000MF;**

The estimated launch date for these new models is September 2019 provided that the stock of their predecessor models has run out by then.

These new models introduce substantial improvements to many functions and performance:

- ❖ **Reinforced Security**

With the introduction of a Data Security Kit offered as standard (no option required) which comprises a TPM chip to encrypt and decrypt data and enables a Secure Boot procedure to check the firmware integrity at the run-time integrity check (?);

- ❖ **Improved Usability**

They feature a large 10.1” customisable user Touch-panel to speed up operations. A key pad is available as an option.

- ❖ **Improved Time-saving**

A new sensor, has been added, for detecting if a person is approaching the MFP and wakes it up automatically from Sleep Mode. A new Barcode Recognition System is also now available to read the barcode printed on a document and save the scanned file automatically;

- ❖ **Improved Cost-saving**

Features a new ShareBox functionality to share scanned documents among the other users in a network without the use of a dedicated server. Also offers the opportunity to share the Address Book between other MFPs;

- ❖ **Evolution of Basic Performance**

These models feature a new optional Finisher with a stapling capacity of up to 100 sheets, which also has a new optional Document Feeder equipped with a sensor to detect multiple paper feed issues, providing increased scanning speed.

This Sales Guide supplies a number of comparisons, between these two models and competitor models belonging to the same product classification, as well as a comparison with their previous models.

1.2 – The d-Copia 5001MF/d-Copia 6001MF at a glance.

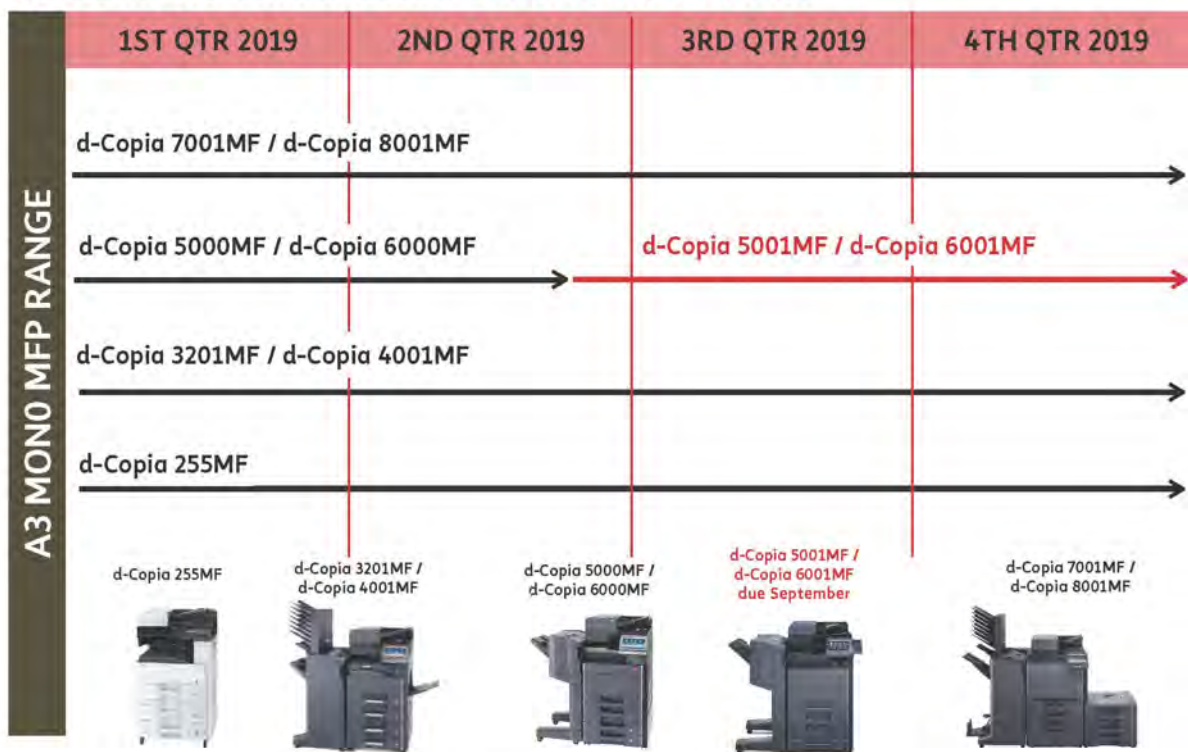
	d-Copia 5001MF / d-Copia 6001MF
What are they ?	Medium-high speed mono A3 MFP, copy, print, scanner, optional fax
How much memory do they have?	RAM 4GB + SSD 8GB + HDU 320GB
How fast do they print/copy ?	50 (d-Copia 5001MF)/ 60 ppm (d-Copia 6001MF) A4 size; 25 / 30ppm, respectively in A3 size
How fast can they scan ?	Up to 220ipm at 300dpi (with DP-7110)
How much paper can they handle without options?	2 x 500+150 sheets (80 g/m ²)
What is the max capacity of paper they can handle with options ?	7,150 sheets - A4
How wide is the paper range they handle ?	52 - 300 g/m ² from Paper Trays 52 - 300 g/m ² from the By-pass
What is the print resolution ?	1,200 x 1,200 dpi
What is the touch-panel size ?	10.1 inches
Where do they scan to ?	Email, SMB,FTP, USB, Box, Net TWAIN, WSD
Which file formats do they provide from scanning ?	TIFF, JPEG, XPS, open XPS, PDF, PDF compressed/encrypted, PDF/A, searchable PDF (optional),MS Office (optional), OOXML (option);
Which optional paper feeders are available ?	DP-7100 (Reverse,140 sheets); DP-7110 (Dual Scan 270 sheets), DP-7130 (Dual Scan 270 sheets with double-feed detection)
Which optional paper trays are available ?	PF-7100 (2 x 500 sheets SRA3), PF-7110 (2 x 1,500-sheets A4), PF-7120 (side mounted 3,000-sheet A4)
Which optional finishers are available ?	DF-7100 (inner 500 sheets); DF-7120 (1000 sheets); DF-7110 (4000 sheets, 65-sheet stapling), DF-7130 (4000 sheets, 100-sheet stapling)
Which optional hole punch kits are available ?	PH-7C, 2/4 holes; PH-7120 for inner finisher only;
Which optional booklet kits are available ?	BF-730A (bi/tri fold, saddle stitch), BF-9100 (for DF-7130 only);
Which optional fax is available	2 x Fax System 12 options and Internet Fax kit (A)
Is an optional multi-tray available ?	MT-730 (B), 7 trays (for DF-7110 only);
What is the toner capacity ?	Up to 35, 000 prints
How long does the maintenance kit last?	Up to 600,000 prints
Which are the corresponding competitor models ?	Kyocera TASKalfa 5003i; Kyocera TASKalfa 6003i; UTAX / TA 5057i; UTAX / TA 6057i;

1.3 - Products Road Map & Positioning

The picture that follows shows the 2018/'19 Road Map for the A3 mono MFP models:



OLIVETTI ROADMAP 2019 A3 MONO MFP RANGE



2. New Features - d-Copia 5001MF/d-Copia 6001MF

2.1 – Increased Security

Data Security Kit **as standard:**



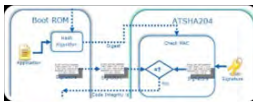
Data Security Kit functions such as Overwriting and Data encryption are supported as standard;

TPM (Trusted Platform Module):



TPM is a hardware chip that encrypts and decrypts data. The root encryption key for encrypting confidential information is stored in a dedicated storage area on the TPM chip. These storage areas cannot be accessed or altered from external devices so confidential information can be safely stored;

Secure Boot:



An integrity check of the firmware will be executed at the device boot and the security of the device is validated before the MFP can operate;

SIEM (Security Information and Event Management):



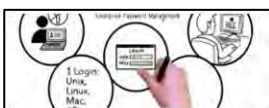
The Audit log is adapted to Syslog protocol and is recorded and any illegal operation is monitored appropriately;

Run-time Integrity Check:



While the device is being operated, an integrity check of the firmware, developed on the memory, is executed and the security of the device is validated.

Power User Privilege - Multiple user privilege control for device setting:



A user can be given access to the MFP by an Administrator or Device Manager and they can determine which operations can only be authorised by an Administrator / Device Manager, such as the User List and Address Book.

2.2 – Improved Usability

These two models have been designed with a **new 10.1” multi-touch panel**, replacing the previous 9” panels which are to become the norm, going forward. These larger panels provide better ease of use and visibility and are operated in a similar way to the now accepted tablet-style screens.



The need for keypads has been reduced, but a 10-numeric keypad is available as an option for users who require a Start, Stop or Reset Key.



Also, to assist with training purposes, Administrators can show the panel screen, via the company’s intranet, to users on their PC to guide them remotely.



2.3 – Human Detection Sensor (Motion Sensor)

Upon detecting a person approaching the MFP, the MFP automatically wakes-up from Sleep Mode, which speeds up warm-up times and



2.4 - Barcode Recognition

Automatically recognises the barcode on a document and saves the scanned information as a keyword.

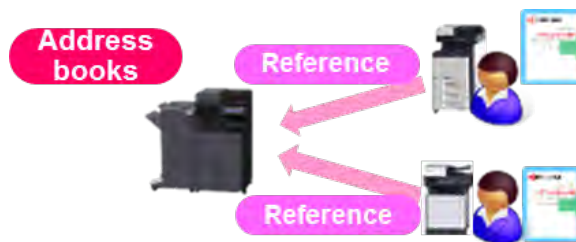


2.5 - Sharing Address Books (Migrating the Address Book)

If multiple MFPs are installed at a site, an Address Book Registration is required for each MFP.

With this new MFP, the Address Book Reference function is installed on the device itself.

Updating the Address Book on one MFP (by using the Network Print Monitor utility provided on the Nat Kit DVD supplied with any new d-Copia 5001MF / d-Copia 6001MF) will make it possible to update other MFPs, so reducing the work load on the Address Book Management.



2.6 - Share Box

By utilising the new ShareBox function it is possible to save a scanned image to the optional storage and share the image with other users.



2.7 – Finisher Function Enhancement

The Finisher DF-7130 with 100 sheet staple is supported as an option, increasing the output capacity significantly.



2.8 - Improved Scanner Functionality

The new original paper feeder DP-7130 combines Duplex Simultaneous Scan together with multiple paper feed detection, to prevent dual or multiple sheet feeding by mistake.



3. Other Selling Points

The new d-Copia 5001MF and d-Copia 6001MF have maintained some of the key features and benefits that were available on their predecessors, the d-Copia 5000MF / d-Copia 6000MF. These are as follows:

3.1 Ease and Speed of Maintenance

The new d-Copia 5001MF/ d-Copia 6001MF can be serviced and maintained in less than four minutes.

In addition, all maintenance relevant parts like the Drum, Developer, Transfer Belt, Fixing Unit and Paper Feeding Units can be replaced without using any tools at all. This convenience will not only save time but also minimise the amount of training which is normally needed to perform maintenance on an A3 MFP.



3.2 Toner Container Lock

The d-Copia 5001MF/ d-Copia 6001MF are equipped with a toner lock to ensure no toner is wasted by it being changed unnecessarily or tampered with by members of staff who are not unauthorised to do so.

Only when the toner container is completely empty, and the message appears on the touch screen, that the unit needs to be changed, will the lock be opened. However, this system can be switched off, in Maintenance Mode, if the customer or the authorised Olivetti Dealer prefers not to utilise the function.



3.3 - Reusable Black Toner Container

As soon as the black toner container is empty it needs to be replaced and should be re-used as a new Waste Toner Bottle.

This is not only very convenient but it also has a direct impact to the CPP as the need to order replacement Waste Toner Containers is greatly reduced and it avoids additional downtime. This feature reduces the impact of the models on the environment because the bottles are being recycled naturally.



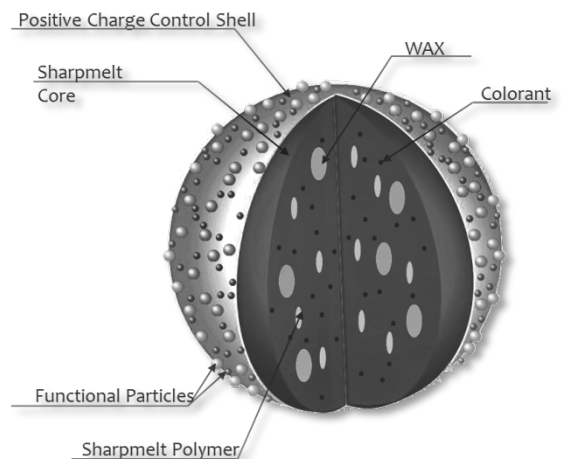
3.4 High Standard Print Resolution

With a standard print resolution of 1,200 x 1,200 dpi with 2-bit depth (equivalent to 4800 x 1200 dpi) the d-Copia 5001MF and d-Copia 6001MF deliver sharp images while some competitive devices have to slow down when printing to their highest resolution. Small text and line work will benefit from the high print resolution which is a real advantage when printing scaled-down blueprints, drawings and architectural plans.

3.5 - Toner with Low Melting Point

This new and unique toner development combines the advantages of chemical toner with the benefits of conventional toner. That's why sometimes the code name 'hybrid toner' is used. The most important advantages of the new toner are **higher image quality with less toner consumption** and a **reduced melting point which results in reduced TEC values**. That means not only the image quality benefits but also the environment.

This toner has a thinner coating and adheres better to paper than previous toner, which also has the added advantage of improving the perception of overall image quality.



3.6 - High resolution printing at Speed

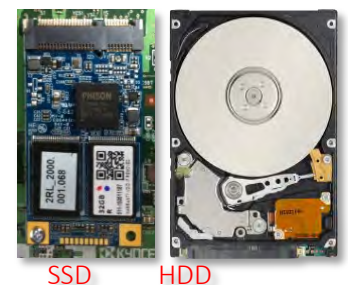
Specific ASIC controllers (Application Specific Integrated Circuit) have been developed to achieve outstanding productivity resulting from 1,200 x 1,200 dpi. One new ASIC is responsible for High Accuracy Image Processing while another one is in charge of High Speed Laser Control Regulation. Together, with a 4 beam Laser Unit, printing with 1,200 dpi is possible up to 60ppm.



3.7 - Solid State Drive

The use of Solid State Drives (SSD) for the operating system of the MFP improves the overall productivity. SSDs don't use any mechanical or rotating parts therefore they are much faster than conventional HDDs and the energy consumption is minimised. With this innovation the boot-up and wake-up time has been decreased.

The d-Copia 5001MF and d-Copia 6001MF are equipped with an 8 GB SSD for the OS only, and a standard 320GB HDD for storage purposes.



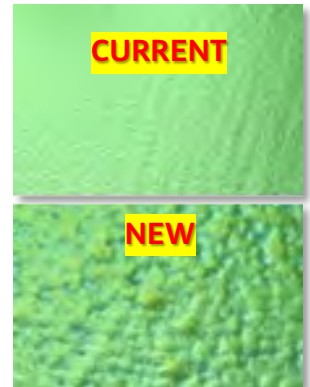
3.8 - Waste Reduction due to Long Life Units

Amorphous Silicone (aSI) Drums with a lifetime of 600,000 prints are still unique in mid volume class of A3 MFPs.

With its roughened surface the pressure of the cleaning blade has been reduced in order to improve the reliability of the Drums.

Furthermore the Fuser Unit, as well as the Developer Units, achieves a life-span of 600,000 prints. All these new developments will decrease the amount of waste, drastically, considering the life time of the devices.

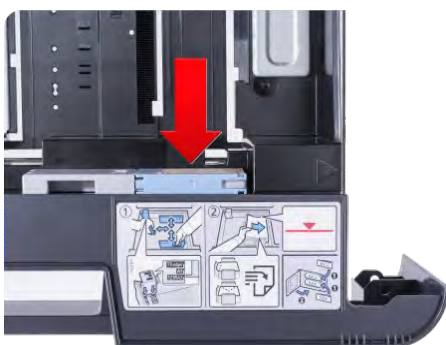
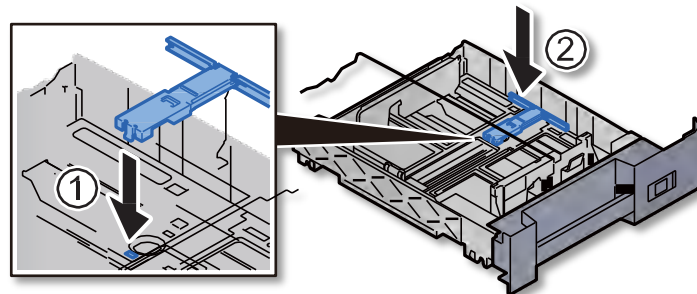
Microscopic View



3.9 - Advanced Paper Handling

The new d-Copia 5001MF and d-Copia 6001MF support paper formats from A6 up to SRA3 (320 x 450 mm). Paper weights from 52 up to 300 g/m², for simplex printing from all trays, and 64 to 256 g/m² for automatic duplex printing are supported. The paper weight for banner paper is 135 to 165 g/m².

Furthermore with the support of a special Envelope Feed Guide (1), located in the upper standard tray, which comes with the device, DL and C5 Envelopes can be fed directly from the paper tray.



3.10 - Innovative Device Handling

The general handling of the d-Copia 5001MF and d-Copia 6001MF is simple and efficient. In particular, jam recovery has been significantly improved over preceding models.

Improvements introduced include:

- Wide opening device covers** for easy access
- Wide opening Bridge Unit** cover for easy access
- Transparent paper guides** for easy jam identification
- Self-Closing Paper Trays** - in case the tray is not closed properly
- Soft-Closing Paper Trays** - in case the trays are pushed too vigorously
- Removable Paper Trays** for easy access
- Removable Fixing Unit** for easy access



3.11 - Mobile Connectivity

The d-Copia 5001MF and d-Copia 6001MF support state of the art mobile communications.

The optional wireless interface IB-35 offers easy connectivity to mobile devices, enabling users to print or scan directly from their mobile devices like smart phones or tablets either with iOS or Android driven devices.

There is no need to connect the mobile device to the same network the MFP is connected to. The combination of NFC (Near Field Communication) and direct WiFi makes it really easy to establish a direct connection with the MFP. Simply hold the mobile android device over the NFC tag of the user interface and the NFC will exchange automatically all the necessary information to establish a direct connection with the IB-35 interface.

With the help of WiFi DIRECT the user can now print and scan directly.



3.12 - Enhanced Standard Security

The d-Copia 5001MF and d-Copia 6001MF are the first of the mono models to offer the Data Security Kit as standard!

Unlike their predecessors, these new models provide the highest security level including **Common Criteria Certification (ISO/IEC 15408)** as well as the **IEEE 2600.1**, as standard without the need to add dedicated options.

In addition, these new models offer a standard **SANITISATION** feature which is very useful when the device is discarded at the end of the contract. All data on the Hard Disk (HDD), Solid State Disk (SSD) and Fax Memory will be overwritten several times to make sure nobody is able to restore the data.

The sanitisation needs to be executed manually by the system administrator.



4. New Models comparison with Preceding Models

The pages that follow contain the comparison features of the new models versus the predecessor models:

- ❖ d-Copia 5001MF versus d-Copia 5000MF;

- ❖ d-Copia 6001MF versus d-Copia 6000MF

The boxes highlighted with green background show an improved characteristic of one of the compared models.

Comparison d-Copia 5001MF to d-Copia 5000MF

	Olivetti d-COPIA 5001MF	Olivetti d-COPIA 5000MF
OEM	KYOCERA (China)	KYOCERA (China)
Also Sold As	KYOCERA TASKalfa 5003i;	KYOCERA TASKalfa 5002i; TA Triumph-Adler 5056i
TYPE	Monochrome copier, MF	Monochrome copier, MF
Configuration/Scanner	Desktop,digital	Desktop,digital
Technology	Laser	Laser
GENERAL SPECIFICATIONS/PAPER HANDLING		
First Copy Time	3.7 sec	3.7 sec
Multicopy (Ltr/Lgl/Ldgr)	50/25 cpm	50/25 cpm
Warm-up Time	17 sec	17 sec
Std Paper Source(s)	Dual drawer	Dual drawer
Std Paper Capacity	500/500 sheets	500/500 sheets
Paper Weights	52 to 300 gsm	52 to 300 gsm
Bypass/Paper Weights	150-sheet/52 to 300 gsm	150-sheet/52 to 300 gsm
Max Paper Sources	5	5
Max Paper Capacity	7,150 sheets	7,150 sheets
Max Original Size	A3	A3
Output Size (Min/Max)	A6/SRA3	A6/SRA3
Copy Resolution	600 x 600 dpi	600 x 600 dpi
System Memory (Std/Max)	4-GB RAM, 8-GB and 320-GB HD/4-GB RAM, 8-GB and 320-GB HD	4-GB RAM, 8-GB and 320-GB HD/4-GB RAM, 8-GB and 320-GB HD
Document Feeder	Opt RADF, DSPF and DSPF	Opt RADF and DSPF
Document Feeder Capacity	140 orig, 270 orig, 270 orig	140 orig, 270 orig
Paper Weights	35 to 160 gsm, 35 to 220 gsm	35 to 160 gsm, 35 to 220 gsm
Finisher	Opt finishers	Opt finishers
Tray/Stapling/Position(s)	500, 1,000, 4,000, 4,000/50, 50, 65, 100/3	500, 1,000, 4,000/50, 50, 65/3
SECURITY SPECS		
Network User Authentication	Yes	Yes
IP Address Filtering	Yes	Yes
MAC Address Filtering	Yes	Yes
HDD Overwrite	Std	Opt
Max Overwrites	3	3
HDD Encryption	Std	Opt
Secure Print	Yes	Yes
Encrypted Secure Print	Yes	Yes
Encrypted PDF Mode (Encrypted Scanning)	Yes	Yes
IPsec	Yes	Yes
Secure Sockets Layer (SSL)	Yes	Yes
SNMPv3	Yes	Yes
Transport Layer Security	Yes	Yes
CONTROL PANEL	257 mm color touchscreen	228 mm color touchscreen
Quantity Selector	1 to 9,999 (0 to 9 touch keys)	1 to 999 (0 to 9 touch keys)
Message Display	Yes	Yes
Help Key	Yes	Yes
ADDITIONAL INFORMATION		
Dimensions (HxWxD)	790 mm x 602 mm x 665 mm	790 mm x 602 mm x 665 mm
Weight	83 kg	83 kg
Power Requirements	220-240 V, 7.2 A	220-240 V, 7.2 A
Energy Used While Power Off	0.3W	0.1W
Energy Used in Power Save Mode	0.7W	1W
Energy Used in Ready Mode	50W	40W
Energy Used While Copying	740W	Info not avail
Energy Used While Printing	740W	710W
Energy Used While Scanning	Info not avail	Info not avail
Max Power Consumption	1750W	1750W
TEC Value	2.4KWh	2.414KWh
Dedicated Outlet	Recommended	Recommended
Energy Star Compliant	Yes	Yes
Operating Noise Level	53.1 dB	70.5 dB

Comparison d-Copia 5001MF to d-Copia 5000MF continued.../

	Olivetti d-COPIA 5001MF	Olivetti d-COPIA 5000MF
MULTIFUNCTION MODES		
Copier	Std	Std
Internet Fax	Opt	Opt
Network Printer	Std	Std
Printer	Std	Std
Fax	Opt	Opt
Network Fax	Opt	Opt
PC Fax	Opt	Opt
Scanner	Std	Std
CONNECTIVITY SPECIFICATIONS		
Operating System Support	Win XP, Server 2003, Vista, Server 2008, 7, Server 2012, 8, 8.1, 10, Mac OS X 10.9+, Linux, UNIX	Win XP, Server 2003, Vista, Server 2008, 7, Server 2012, 8, 8.1, 10, Mac OS X v10.8+, Linux, UNIX
Parallel Interface	None	None
Serial Interface	None	None
USB Interface	Std 2.0, std 2.0 (host) x 4	Std 2.0, std 2.0 (host) x 4
Network Interface	Std Ethernet, opt wireless	Std Ethernet, opt wireless
Interface Type	10/100/1000BaseTX, 802.11b/g/n	10/100/1000BaseTX, 802.11b/g/n
Mobile Print Support	Yes (Apple AirPrint, Olivetti Mobile Print, Wi-Fi Direct)	Yes (Apple AirPrint, Olivetti Mobile Print, Wi-Fi Direct)
Near Field Communication	Std	Std
Embedded Software Platform or Extensible Solutions Interface	Java and Web Solutions (JAWS)	Java and Web Solutions (JAWS)
FACSIMILE SPECIFICATIONS		
Scanner Technology	CCD	CCD
Compression Method	MH/MR/MMR/JBIG	MH/MR/MMR/JBIG
Modern Speed	33.6 Kbps	33.6 Kbps
Max TX Resolution	600 x 600 dpi	600 x 600 dpi
Gray Scale/Halftones	Info not avail	Info not avail
Transfer Hub	Info not avail	Info not avail
DIALING CAPABILITIES		
Broadcasting (Groups/Dest)	Info not avail/500	Info not avail/500
Redial (Attempts/Intervals)	Info not avail	Info not avail
One Touch	1000	1000
PRINTER SPECIFICATIONS		
Engine Mfr & Model	KYOCERA/TASKalfa 5003i	KYOCERA/TASKalfa 5002i
Compatibility	PC, Mac	PC, Mac
Speed	50 ppm	50 ppm
First-Page-Out Time	4.3 sec	4.3 sec
Max Print Area	312 x 442	312 x 442
Print from USB	Yes (JPEG, PDF, TIFF, XPS)	Yes (JPEG, PDF, TIFF, XPS)
Enhanced Resolution	9600 x 600 dpi	9600 x 600 dpi
Unenhanced Resolution	1200 x 1200 dpi	1200 x 1200 dpi
Std/Max Printer Memory	Shared	Shared
Controller Mfr/Model	KYOCERA/Info not avail	KYOCERA/Info not avail
Processor/Bits/MHz	Freescale QorIQ T1024/Info not avail/1.2 GHz	Freescale QorIQ T1024/Info not avail/1.2 GHz
SCANNER AND IMAGE MANAGEMENT SPECIFICATIONS		
Technology/Scan Speed	CCD/80 ipm color, 80 ipm black or 100 ipm color, 100 ipm black or 120 ipm color, 120 ipm black	CCD/80 ipm color, 80 ipm black or 100 ipm color, 100 ipm black
Max Resolution	600 x 600 dpi	600 x 600 dpi
TWAIN Compatible	Yes	Yes
Scan Destinations		
Cloud	Yes	Yes
I-fax	Yes	Yes
FTP	Yes	Yes
SMB	Yes	Yes
HDD	Yes	Yes
URL	No	No
USB	Yes	Yes

© 2019 Buyers Laboratory LLC

Comparison d-Copia 6001MF to d-Copia 6000MF

	Olivetti d-COPIA 6001MF	Olivetti d-COPIA 6000MF
OEM	KYOCERA (China)	KYOCERA (China)
Also Sold As	KYOCERA TASKalfa 6003i	KYOCERA TASKalfa 6002i; TA Triumph-Adler 6056i
TYPE	Monochrome copier, MF	Monochrome copier, MF
Configuration/Scanner	Desktop,digital	Desktop,digital
Technology	Laser	Laser
GENERAL SPECIFICATIONS/PAPER HANDLING		
First Copy Time	3.4 sec	3.4 sec
Multicopy (Ltr/Lgl/Ldgr)	60/30 cpm	60/30 cpm
Warm-up Time	17 sec	17 sec
Std Paper Source(s)	Dual drawer	Dual drawer
Std Paper Capacity	500/500 sheets	500/500 sheets
Paper Weights	52 to 300 gsm	52 to 300 gsm
Bypass/Paper Weights	150-sheet/52 to 300 gsm	150-sheet/52 to 300 gsm
Max Paper Sources	5	5
Max Paper Capacity	7,150 sheets	7,150 sheets
Max Original Size	A3	A3
Output Size (Min/Max)	A6/SRA3	A6/SRA3
Copy Resolution	600 x 600 dpi	600 x 600 dpi
System Memory (Std/Max)	4-GB RAM, 8-GB and 320-GB HD/4-GB RAM, 8-GB and 320-GB HD	4-GB RAM, 8-GB and 320-GB HD/4-GB RAM, 8-GB and 320-GB HD
Document Feeder	Opt RADF, DSPF and DSPF	Opt RADF and DSPF
Document Feeder Capacity	140 orig, 270 orig, 270 orig	140 orig, 270 orig
Paper Weights	35 to 160 gsm, 35 to 220 gsm	35 to 160 gsm, 35 to 220 gsm
Finisher	Opt finishers	Opt finishers
Tray/Stapling/Position(s)	500, 1,000, 4,000, 4,000/50, 50, 65, 100/3	500, 1,000, 4,000/50, 50, 65/3
SECURITY SPECS		
Network User Authentication	Yes	Yes
IP Address Filtering	Yes	Yes
MAC Address Filtering	Yes	Yes
HDD Overwrite	Std	Opt
Max Overwrites	3	3
HDD Encryption	Std	Opt
Secure Print	Yes	Yes
Encrypted Secure Print	Yes	Yes
Encrypted PDF Mode (Encrypted Scanning)	Yes	Yes
IPsec	Yes	Yes
Secure Sockets Layer (SSL)	Yes	Yes
SNMPv3	Yes	Yes
Transport Layer Security	Yes	Yes
CONTROL PANEL	257 mm color touchscreen	228 mm color touchscreen
Quantity Selector	1 to 9,999 (0 to 9 touch keys)	1 to 999 (0 to 9 touch keys)
Message Display	Yes	Yes
Help Key	Yes	Yes
ADDITIONAL INFORMATION		
Dimensions (HxWxD)	790 mm x 602 mm x 665 mm	790 mm x 602 mm x 665 mm
Weight	83 kg	83 kg
Power Requirements	220-240 V, 7.2 A	220-240 V, 7.2 A
Energy Used While Power Off	0.3W	0.1W
Energy Used in Power Save Mode	0.7W	1W
Energy Used in Ready Mode	50W	40W
Energy Used While Copying	870W	Info not avail
Energy Used While Printing	870W	820W
Energy Used While Scanning	Info not avail	Info not avail
Max Power Consumption	1750W	1750W
TEC Value	3KWh	2.414KWh
Dedicated Outlet	Recommended	Recommended
Energy Star Compliant	Yes	Yes
Operating Noise Level	54.9 dB	72.2 dB

Comparison d-Copia 6001MF to d-Copia 6000MF continued.../

	Olivetti d-COPIA 6001MF	Olivetti d-COPIA 6000MF
MULTIFUNCTION MODES		
Copier	Std	Std
Internet Fax	Opt	Opt
Network Printer	Std	Std
Printer	Std	Std
Fax	Opt	Opt
Network Fax	Opt	Opt
PC Fax	Opt	Opt
Scanner	Std	Std
CONNECTIVITY SPECIFICATIONS		
Operating System Support	Win XP, Server 2003, Vista, Server 2008, 7, Server 2012, 8, 8.1, 10, Mac OS X 10.9+, Linux, UNIX	Win XP, Server 2003, Vista, Server 2008, 7, Server 2012, 8, 8.1, 10, Mac OS X v10.8+, Linux, UNIX
Parallel Interface	None	None
Serial Interface	None	None
USB Interface	Std 2.0, std 2.0 (host) x 4	Std 2.0, std 2.0 (host) x 4
Network Interface	Std Ethernet, opt wireless	Std Ethernet, opt wireless
Interface Type	10/100/1000BaseTX, 802.11b/g/n	10/100/1000BaseTX, 802.11b/g/n
Mobile Print Support	Yes (Apple AirPrint, Olivetti Mobile Print, Wi-Fi Direct)	Yes (Apple AirPrint, Olivetti Mobile Print, Wi-Fi Direct)
Near Field Communication	Std	Std
Embedded Software Platform or Extensible Solutions Interface	Java and Web Solutions (JAWS)	Java and Web Solutions (JAWS)
FACSIMILE SPECIFICATIONS		
Scanner Technology	CCD	CCD
Compression Method	MH/MR/MMR/JBIG	MH/MR/MMR/JBIG
Modem Speed	33.6 Kbps	33.6 Kbps
Max TX Resolution	600 x 600 dpi	600 x 600 dpi
Gray Scale/Halftones	Info not avail	Info not avail
Transfer Hub	Info not avail	Info not avail
DIALING CAPABILITIES		
Broadcasting (Groups/Dest)	Info not avail/500	Info not avail/500
Redial (Attempts/Intervals)	Info not avail	Info not avail
One Touch	1000	1000
PRINTER SPECIFICATIONS		
Engine Mfr & Model	KYOCERA/TASKalfa 6003i	KYOCERA/TASKalfa 6002i
Compatibility	PC, Mac	PC, Mac
Speed	60 ppm	60 ppm
First-Page-Out Time	3.8 sec	3.8 sec
Max Print Area	312 x 442	312 x 442
Print from USB	Yes (JPEG, PDF, TIFF, XPS)	Yes (JPEG, PDF, TIFF, XPS)
Enhanced Resolution	9600 x 600 dpi	9600 x 600 dpi
Unenhanced Resolution	1200 x 1200 dpi	1200 x 1200 dpi
Std/Max Printer Memory	Shared	Shared
Controller Mfr/Model	KYOCERA/Info not avail	KYOCERA/Info not avail
Processor/Bits/MHz	Freescale QorIQ T1024/Info not avail/1.2 GHz	Freescale QorIQ T1024/Info not avail/1.2 GHz
SCANNER AND IMAGE MANAGEMENT SPECIFICATIONS		
Technology/Scan Speed	CCD/80 ipm color, 80 ipm black or 100 ipm color, 100 ipm black or 120 ipm color, 120 ipm black	CCD/80 ipm color, 80 ipm black or 100 ipm color, 100 ipm black
Max Resolution	600 x 600 dpi	600 x 600 dpi
TWAIN Compatible	Yes	Yes
Scan Destinations:		
Cloud	Yes	Yes
I-fax	Yes	Yes
FTP	Yes	Yes
SMB	Yes	Yes
HDD	Yes	Yes
URL	No	No
USB	Yes	Yes

© 2019 Buyers Laboratory LLC

5 - Product Configuration – Commonly shared Options

Several options of the new d-Copia 5001MF and d-Copia 6001MF share options with other products in similar ranges, as shown by the table that follows in the next page:

The availability of commonly shared options reduces the total number of items to be managed, simplifies the handling and saves on storage room.

Products Families		What are they ?
d-COPIA 3201MF (B3678)		32ppm A3 Mono MFP
d-COPIA 4001MF (B3679)		40ppm A3 Mono MFP
	d-COPIA5001MF (B3704)	50ppm A3 Mono MFP
	d-COPIA6001MF (B3705)	60ppm A3 Mono MFP
	d-COLOR MF2653 (B3626)	25ppm A3 Color MFP
	d-COLOR MF3263 (B3626)	32ppm A3 Color MFP
Options		
PF-291 (B4514)		500 sheets x 2 deck
PF-310 (B4513)		1000 sheet deck (1500 x 2deck extra)
DF-791 (B4512)		3000 sheet Finisher
AJK-740 (B4513)		Attachment kit
Copier Desk (B4748)		Copier Desk
	DF-7130 (B3707)	Dual Scan Feeder with multi-feed detection
	DF-7130 (B3708)	Finisher supporting 100-sheet stapling
	BR-9100 (B3702)	Booklet extension
	AJK-7110 (B3702)	Attachment kit
	MG-7130 (B3710)	External numeric keys
		Ray Controller
	Printing System 15 (B3527) (MFD 53 only)	
	Print Sys. Interface Kit 15 (B3525) (MFD 253 only)	Interface Board for Ray Controller
	AJK-7100 (B3326)	Attachment kit
	DF-7100 (B3322)	Inner Finisher
	DF-7110 (B3324)	4000 sheet Finisher
	JS-7100 (B3325)	Inner job separator
	DF-730 (B3540)	Booklet extension
	PF-7100 (B3322)	500 sheets x 2 deck
	PF-7110 (B3322)	1000 sheet deck (1500 x 2deck extra)
	PF-7130 (B3322)	3000 sheet large capacity AA side-ack
	Banner Guide 10 (B3332)	Banner paper tray
	Copier Desk (B3350)	Copier Desk
	RH-7120 (B3321)	Punch extension DF-7100
	RH-7130 (B3474)	Punch extension DF-7100 Sweden only
HO-12 (B3240) 3201MF only		Hard-Disk 320GB
Data Security Kit(S) (B3578)	Standard	HDD security Kit - (Activation kit)
NK-7100 (B3324)		External numeric keys
DR-7120 (B3323)		Mechanical Reverse Original Feeder(RAOF)
	Platen Cover (S) (B3330)	Platen Cover
	DF-7100 (B3320)	Mechanical Reverse Original Feeder(RAOF)
	DF-7110 (B3321)	Dual Scan Original Reader
	DF-7120 (B3322)	1000 sheet Finisher
	RH-7C (B3322)	Punch extension
	RH-7D (B3475)	Punch extension Sweden only
	MP-730 (B) (B4282)	Multiple tray for DF-7110 & DF-791
	RAX SYSTEM 12 (B3331)	Rax card
	Internal RAX Kit(A) (A C) (B3575)	Internal RAX extension - (Activation kit)
	Card Authentication Kit(S) (B3531)	IC Card (Activation Kit)
	Scan Extension Kit (A) (B4492)	OC Extension kit (Activation kit)
	DT-730(B) (B4571)	Document table
	Keyboard Holder 10 (B3322)	Keyboard holder
	IS-35 (B3322)	Wireless LAN interface
	IS-50 (B480)	Network interface
	IS-51 (B4222)	Wireless LAN interface
	UG-33 AC (B3403)	ThruPrint Option
	UG-34 AC (B3332)	UPDRS ADE KIT
	USB Card Reader M/F/R/R/S, MULTI 120, MULTI 125 (B3552)	USB Card Reader M/F/R/R/S, MULTI 120, MULTI 125
	USB Card Reader R/D Print, Ink/Ag (B3522)	USB Card Reader R/D Print, Ink/Ag
	USB Card Reader iClass (B3591)	USB Card Reader iClass
	USB Card Reader LGG/C (B3522)	USB Card Reader LGG/C

Commonly shared Consumables

Consumables		
TONER CARTR. d-COPIA 3201MF (S1276)		Toner 20,000 pages
TONER CARTR. d-COPIA 4001MF (S1277)		Toner 25,000 pages
MAINT. KIT d-COPIA 3201MF / 4001MF / plus (S1275)		Maintenance kit
	TONER CARTR. d-COPIA 5001MF (S1215)	Toner 25,000 pages
	MAINT. KIT d-COPIA 3001MF (S1257)	Maintenance kit
	SH-4 (S1214)	Staples (for DF-T1 30 only)
	WT-2000 (S1234)	Waste toner bin
	TONER CARTRIDGE K d-COLOR MP2555 (S1249)	Toner black 20,000 pages
	TONER CARTRIDGE Y d-COLOR MP2555 (S1250)	Toner yellow 12,000 pages
	TONER CARTRIDGE M d-COLOR MP2555 (S1251)	Toner magenta 12,000 pages
	TONER CARTRIDGE C d-COLOR MP2555 (S1252)	Toner cyan 12,000 pages
	TONER CARTRIDGE K d-COLOR MP3255 (S1253)	Toner black 20,000 pages
	TONER CARTRIDGE Y d-COLOR MP3255 (S1254)	Toner yellow 12,000 pages
	TONER CARTRIDGE M d-COLOR MP3255 (S1255)	Toner magenta 12,000 pages
	TONER CARTRIDGE C d-COLOR MP3255 (S1256)	Toner cyan 12,000 pages
	MAINTENANCE KIT d-COLOR MP2555/MP3255 (S1257)	Drum Unit Black 200,000 pages
	MAINTENANCE KIT d-COLOR MP2555/MP3255 (S1258)	Drum Unit C/M/Y 200,000 pages
	MAINTENANCE KIT d-COLOR MP2555/MP3255 (S1259)	Develop/Black/Fuser/Transfer 600,000 pages
	MAINTENANCE KIT d-COLOR MP2555/MP3255 (S1260)	Develop/Black/Fuser/Transfer 600,000 pages
	SH-12 (S0996)	5 staples
	SH-10 (S0995)	5 staples

Legende:

Specific Item d-COPIA 3201/4001MF / plus
Specific Item d-COLOR MP2555/3255
Specific Item d-COPIA 5001 MF/6001 MF
Common Item d-COPIA 3201/4001MF & 5001/6001MF & d-COLOR MP2555/3255
Common Item d-COPIA 3201/4001MF & d-COLOR MP2555/3255
Common Item d-COPIA 5001/6001MF & d-COLOR MP2555/3255

5.1 - Products Codes for the d-Copia 5001MF/d-Copia 6001MF

5.1.1 - Basic Units

	Product Code	Notes
d-Copia 5001MF	B3704	
d-Copia 6001MF	B3705	

5.1.2 - Options

	Product Code	Attachment Notes
DP-7100 Reverse Automatic Document Feeder 140 sheets capacity	B3320	As an alternative to DP-7110, or DP-7130, or Platen Cover (E)
DP-7110 Dual Scan Document Feeder 270 sheets capacity	B3321	As an alternative to DP-7100, or DP-7130, or Platen Cover (E)
DP-7130 Dual Scan Document Feeder 270 sheets capacity and double feed detection sensor	B3707	As an alternative to DP-7100, or DP-7110, or Platen Cover (E)
Platen Cover Type (E)	B5338	As an alternative to DP-7100 or DP-7110 or DP-7130
PF-7100 500 Sheets (A3) × 2 Paper Drawer	B3328	As an alternative to PF-7110 or Copier Desk
PF-7110 1500 Sheets (A4) × 2 Paper Drawer	B3329	As an alternative to PF-7100 or Copier Desk
Copier Desk	B3380	As an alternative to PF-7100 or PF-7110
PF-7120 3000 Sheets (A4) × 1 side mount Paper Drawer	B3330	Requires PF-7100 or PF-7110 (DOES NOT FIT with Copier Desk B3380)
Continued overleaf....!		

DF-7100 500 sheets inner finisher	B3322	As an alternative to DF-7110+AK-7110 or DF-7120 +AK-7110 or DF-7130+AK-7110 or JS-7100. Works with Staples SH-10
DF-7120 1,000 Sheet Side Finisher	B3323	Requires AK-7110 As an alternative to DF-7100 or DF-7110 +AK-7110 or DF-7130+AK-7110 or JS-7100 Works with Staples SH-10
DF-7110 4,000 Sheet Finisher/50-sheet stapling capacity	B3324	Requires AK-7110 As an alternative to DF-7100, or DF-7120 +AK-7110, or DF-7130+AK-7110, or JS-7100. Works with staples SH-12
DF-7130 4,000 Sheet Finisher/100-sheet stapling capacity	B3706	Requires AK-7110 As an alternative to DF-7100, or DF-7110 +AK-7110, or DF-7120+AK-7110, or JS-7100. Works with staples SH-14
AK-7110 Attachment kit for external finishers	B3709	Mandatory to connect DF-7120 or DF-7110 or DF-7130
PH-7C (for all EC countries except Sweden) Punch unit for external finishers	B8639	To be installed on DF-7110 +AK-7110, or DF-7120+AK-7110, or DF-7130+AK-7110
PH-7120 (for all EC countries except Sweden) Hole Punch unit for internal finisher	B3327	To be installed on DF-7100
JS-7100 Internal job separator	B3326	As an alternative to DF-7100, or DF-7120 +AK-7100, or DF-7110+AK-7100, or DF-7130+ AK-7100.
BF-730 Booklet extension	B8640	Can be installed on DF-7110 + AK-7110 only Works with Staples SH-10
MT-730 (B) Multiple tray extension	B4283	Can be installed on DF-7110 +AK-7100 only

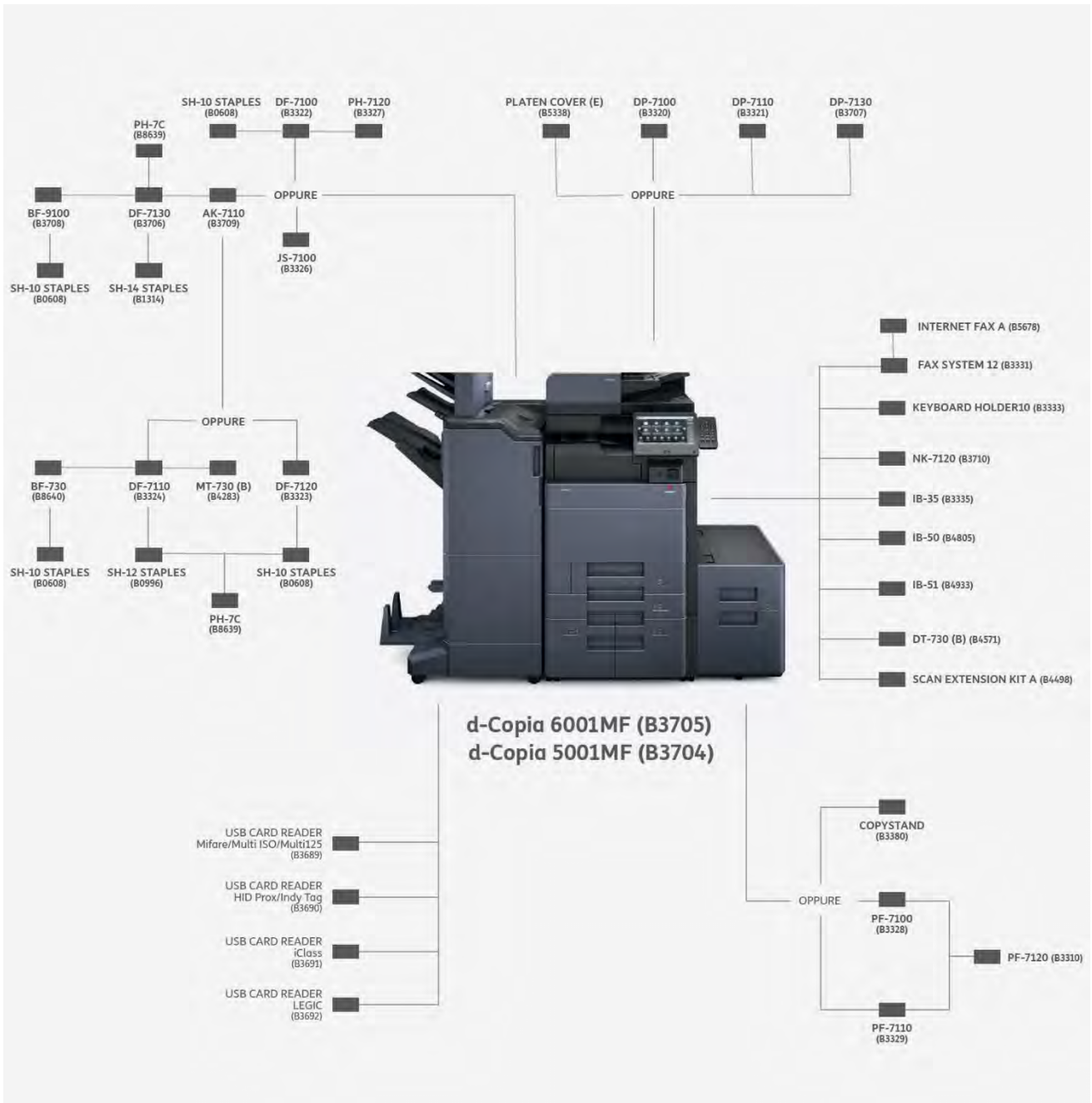
5.1.2 – Options (cont.)

	Product Code	Attachment notes
Fax System 12 Fax Board	B3331	Up to 2 Fax System 12 options can be installed
Internet Fax Kit (A)	B5678	Requires the Fax System 12
NK-7120	B7120	None
BF-9100 Booklet Extension	B3708	Can be installed on DF-7130+AK-7110 only Works with staples SH-10
Banner Guide 10	B3332	None
DT-730 (B) Document Table	B4571	None
Keyboard Holder 10	B3333	None
IB-35 Direct WiFi adapter	B3335	None
IB-50 Gigabit adapter	B4805	None
IB-51 WiFi adapter	B4933	None
UG-33 AC Thin print option	B8403	None
UG-34 AC Upgrade kit	B3339	None
Card Authentication (B)	B8237	None
Scan extension kit (A)	B4498	None
USB Card Reader Mifare/Multi ISO/ Multi 125	B3689	As an alternative to Card Reader HID Prox/Indytag, or iClass, or Legic
Mifare Adhesive Tag (set of 50 stickers)	B3805	Can be used together with USB C.R. B3689
USB Card Reader HID Prox/Indytag	B3690	As an alternative to Card Reader Mifare/Multi ISO/Multi 125, or iClass, or Legic
USB Card Reader iClass	B3691	As an alternative to Card Reader Mifare/Multi ISO/Multi 125, or HID Prox/Indytag, or Legic
USB Card Reader Legic	B3692	As an alternative to Card Reader Mifare/Multi ISO/Multi 125, or HID Prox/Indytag, or iClass

5.1.3 - Consumables

	Product Code	Compatibility
Toner Cartridge d-Copia 5001/6001/4000/5000/6000MF Capacity up to 35,000 copies/prints with 6% coverage;	(B1215)	d-Copia 5001MF d-Copia 6001MF d-Copia 4000MF d-Copia 5000MF d-Copia 6000MF
Maintenance Kit d-Copia 4000/5000/5001/6000/6001MF Capacity up to 600,000 copies/prints with 5% coverage;	(B1357)	d-Copia 5001MF d-Copia 6001MF d-Copia 4000MF d-Copia 5000MF d-Copia 6000MF
Waste Toner Container Capacity up to 40,000 copies/prints	(B1214)	d-Copia 5001MF d-Copia 6001MF d-Copia 4000MF d-Copia 5000MF d-Copia 6000MF
SH-10 Staples for DF-7000/DF-7120/BF-730/BF-9100	(B0608)	DF-7100 / DF-7120 BF-730 / BF-9100
SH-12 Staples for DF-7110	(B0996)	DF-7110
SH-14 Staples for DF-7130	(B1314)	DF-7130

5.2 - Options Configuration Chart d-Copia 5001MF /d-Copia 6001MF



5.3 - Minimum Configuration

The table below lists the items that are necessary to obtain the minimum operative conditions.

Please Note: NO free toner cartridge is supplied with a new d-Copia 5001MF / d-Copia 6001MF

List of items	Product code
d-Copia 5001MF or d-Copia 6001MF	(B3704) or (B3705)
Platen Cover Type (E)	(B5338)
Copier Desk	(B3380)
Toner Cartridge d-Copia 5001MF /d-Copia 6001MF / d-Copia 4000MF / d-Copia 5000MF /d-Copia 6000MF	(B1215)

5.4 - Package of Basic Units

Contents

The basic unit is delivered in a carton box containing the following items:

- **Basic Unit of the d-Copia 5001MF or d-Copia 6001MF** equipped with drums, waste toner box, developing units
(No toner cartridge is supplied with the new unit);
- **DVD-ROM containing the Operation Guides** in 21 languages (English, Spanish, Catalan, German, French, Dutch, Italian, Portuguese, Russian, Finnish, Czech, Danish, Swedish, Arabian, Greek, Hebrew, Norwegian, Polish, Romanian, Turkish, Hungarian), the print drivers, the scan drivers, the utilities;
- **European Power Cord**;
- **Control Panel Label** in English (additional control panel label in Italian, Spanish, German, Portuguese, French, Dutch and Russian are supplied too);
- **Printed Quick Guide** Multi- language;
- **Printed Directive 2012/19/EU** on the treatment , collection, recycling and disposal of electric and electronic devices and their components;
- **Printed Safety Guides**.

5.5 - Main Units & Options Package Dimensions and Weights

Product	Descriptions	Item	Made	Single box	Weight	Master carton	Units	Weight
				in		size		
						(W x D x H mm)	Kg	(W x D x H mm)
B3704	BASIC MACHINE	d-Copia 5001MF	China	752x824x1025	108	N/A	N/A	N/A
B3705	BASIC MACHINE	d-Copia 6001MF	China	752x824x1025	108	N/A	N/A	N/A
B5338	PLATEN COVER TYPE (E)	PLATEN COVER (E)	China	--	--	--	--	--
B3320	DOCUMENT PROCESSOR	DP-7100	China	751x741x248	12,9	N/A	N/A	N/A
B3321	DOCUMENT PROCESSOR	DP-7110	China	734x672x322	20,8	N/A	N/A	N/A
B3707	DOCUMENT PROCESSOR	DP-7130	China	734x672x322	20	N/A	N/A	N/A
B3328	2 TRAY x 500 SHEETS	PF-7100	China	797x736x434	30	N/A	N/A	N/A
B3329	2 TRAYS x 1500 SHEETS	PF-7110	China	797x736x434	37	N/A	N/A	N/A
B3380	COPIER DESK	same	EU	--	--	--	--	--
B3330	1 TRAYS x 3000 SHEETS	PF-7120	China	792x512x666	38	N/A	N/A	N/A
B3322	FINISHER 500 SHEETS	DF-7100	China	704x598x366	17,6	N/A	N/A	N/A
B3323	FINISHER 1000 SHEETS	DF-7120	China	752x752x1258	46	N/A	N/A	N/A
B3324	FINISHER 4000 SHEETS	DF-7110	China	752x752x1258	55	N/A	N/A	N/A
B3706	FINISHER 4000 SHEETS	DF-7130	China	840x735x1300	77	N/A	N/A	N/A
B3709	ATTACHMENT KIT	AK-7110	China	575x555x250	8.0	N/A	N/A	N/A
B3327	PUNCH UNIT	PH-7120	China	599x288x338	4,9	N/A	N/A	N/A
B3474	PUNCH UNIT	PH-7130	China	599x288x338	4,9	N/A	N/A	N/A
B3332	BANNER GUIDE	BANN.GUIDE	--	504x252x126	1,10	N/A	N/A	N/A
B8639	PUNCH UNIT	PH-7C	China	619x270x272	6	N/A	N/A	N/A
B3475	PUNCH UNIT	PH-7D	China	619x270x272	6	N/A	N/A	N/A
B4283	MULTIPLE TRAY	MT-730 (B)	China	626x586x318	14	N/A	N/A	N/A
B8640	BOOKLET FINISHING	BF-730	--	--	--	--	--	--
B3708	BOOKLET FINISHING	BF-9100	China	890x605x510	37	--	--	--
B3331	FAX SYSTEM 12	FAX SYS.12	China	232x164x73	0,24	482x362x370	20	5,6
B5678	INTERNET FAX KIT A	INT.FAX.Kit (A)	China	Activation kit		N/A	N/A	N/A
B3710	NUMERIC KEYPAD	NK-7120	China	225x155x60	0,25	--	--	--
B4571	DOCUMENT TABLE	DT-730 (B)	China	426x276x178	1,88	N/A	N/A	N/A
B3333	KEYBOARD HOLDER	KEY-HOLD.10	China	356x320x8	2,5	N/A	N/A	N/A
B3335	DIRECT WIFI ADAPTER	IB-35	Japan	168x110x50	0,08	350x234x268	20	2
B4805	GIGABIT INTERFACE	IB-50				N/A	N/A	N/A

B4933	LAN WIFI ADAPTER	IB-51				N/A	N/A	N/A
B4803	THIN PRINT OPTION	UG-33				N/A	N/A	N/A
B3339	UPGRADE KIT	UG-34				N/A	N/A	N/A
B8237	CARD AUTHENTICATION KIT	CARD AUTH (B)		Activation kit		N/A	N/A	N/A
B4498	SCAN EXTENSION + OCR	SCAN EXT.(A)		Activation kit		N/A	N/A	N/A
B3689	C.R.MIFARE/Mul.ISO/Mul.125	C.R. MIFARE				N/A	N/A	N/A
B3805	MIFARE ADHESIVE TAG	MIFARE A.T.				N/A	N/A	N/A
B3890	C.R. HID Prox/INDYtag	C.R.HID/INDYT.				N/A	N/A	N/A
B3891	C.R. HID iClass	C.R.iCLASS				N/A	N/A	N/A
B3892	C.R. HID LEGIC	C.R. LEGIC				N/A	N/A	N/A

5.6 - Consumables Codes, Package Dimensions and Weights

			in			(W x D x H mm)		
B1215	Toner Cartridge Black	Toner Cartridge d-Copia 5001MF d-Copia 6001MF d-Copia 4000MF d-Copia 5000MF d-Copia 6000MF	Japan	619x85x91	1,07	650x277x375	12	14
B1216	Maintenance Kit	Maintenance Kit d-Copia 5001MF d-Copia 6001MF d-Copia 4000MF d-Copia 5000MF d-Copia 6000MF	China	678x594x523	18,7	N/A	N/A	N/A
B1214	Waste Toner Container	Waste Toner Container	China	554x79x88	0,31	564x256x266	9	3,3
B0608	Staples	SH-10	Japan					
B0996	Staple	SH-12	Japan					
B1314	Staple	SH-14	Japan					

6. Specifications

6.1. - Main Units d-Copia 5001MF / d-Copia 6001MF

Item		Description
Type		Desktop
Printing Method		Electrophotography by semiconductor laser
Paper Weight	Cassette	52 to 300 g/m ²
	Multipurpose Tray	52 to 300 g/m ²
Paper Type	Cassette	Plain, Rough, Vellum, Recycled, Preprinted, Bond, Cardstock, Color, Prepunched, Letterhead, Envelope, Thick, High Quality, Custom 1 to 8 (Duplex: Same as Simplex)
	Multipurpose Tray	Plain, Transparency (OHP film), Rough, Vellum, Labels, Recycled, Preprinted, Bond, Cardstock, Color, Prepunched, Letterhead, Envelope, Thick, High Quality, Coated, Index Tab Dividers, Custom 1 to 8
Paper Size	Cassette 1	A4, A5, A6, B5, B6, 216×340 mm, Letter, Legal, Statement, Executive, Oficio II, Folio, 16K, ISO B5, Envelope #10, Envelope #9, Envelope #6, Envelope Monarch, Envelope DL, Envelope C5, Hagaki (Cardstock), Oufuku Hagaki (Return postcard), Youkei 4, Youkei 2, Nagagata 3, Custom (98 × 148 mm to 297 × 356 mm)
	Cassette 2	A3, A4, A5, A6, B4, B5, B6, 216×340 mm, SRA3, Ledger, Letter, Legal, Statement, Executive, 12×18", Oficio II, Folio, 8K, 16K, ISO B5, Envelope #10, Envelope #9, Envelope #6, Envelope Monarch, Envelope DL, Envelope C5, Envelope C4, Hagaki (Cardstock), Oufuku Hagaki (Return postcard), Kakugata 2, Youkei 4, Youkei 2, Nagagata 3, Custom (98 × 148 mm to 320 × 457 mm)
	Multipurpose Tray	A3, A4, A5, A6, B4, B5, B6, 216×340 mm, SRA3, Ledger, Letter, Legal, Statement, Executive, 12×18", Oficio II, Folio, 8K, 16K, ISO B5, Envelope #10, Envelope #9, Envelope #6, Envelope Monarch, Envelope DL, Envelope C5, Envelope C4, Hagaki (Cardstock), Oufuku Hagaki (Return postcard), Kakugata 2, Youkei 4, Youkei 2, Younaga 3, Nagagata 3, Nagagata 4, Custom (98 × 148 mm to 320 × 457 mm) Banner sheet (210 × 488.1 to 304.8 × 1,220 mm/8.26" × 19.22" to 12" × 48.03")
Printable Area		Print margin for top, bottom and both sides is 4 mm or less
Warm-up Time (23°C/73.4°F, 60%)	Power on	17 seconds or less
	Low Power	14.4 seconds or less
	Sleep	14.4 seconds or less
Paper Capacity	Cassette	500 sheets (80 g/m ²)* ¹
	Multipurpose Tray	150 sheets (A4/Letter or smaller) (80 g/m ²), 50 sheets (larger than A4/Letter) (80 g/m ²) 1 sheet (Banner sheet (210 × 488.1 to 304.8 × 1,220 mm/8.26" × 19.22" to 12" × 48.03")) (136 to 163 g/m ²)
Output Tray Capacity	Inner tray	500 sheets (80 g/m ²)
Image Write System		Semiconductor laser and electrophotography
Memory		4.0 GB
Large Capacity Storage		SSD 8 GB/Hard Disk 320 GB

6.1. - Main Units d-Copia 5001MF / d-Copia 6001MF continued.../

Interface	Standard	USB Interface Connector: 1 (Super-Speed USB) Network interface: 1 (10 BASE-T/100 BASE-TX/1000 BASE-T (IPv6, IPv4, IPSec), 802.3a supported) USB Port: 4 (Hi-Speed USB)
	Option	eKUIO: 2 ^{*2} Fax: 2 ^{*3} Wireless LAN: 1 ^{*4}
Operating Environment	Temperature	10 to 32.5°C/50 to 90.5°F
	Humidity	10 to 80 %
	Altitude	3,500 m/11,482 ft maximum
	Brightness	1,500 lux maximum
Dimension (W × D × H) (without Document Processor)		23.71" × 26.19" × 31.11" 602 × 665 × 790 mm
Weight		Approx. 180.8 lb/Approx. 83 kg (without toner container)
Space Required (W × D) (Using multipurpose tray)		36.23" × 26.19" 920 × 665 mm
Power Source		120 V Specification Model: 120 V ~ 60 Hz 12 A 230 V Specification Model: 220 to 240 V ~ 50/60 Hz 7.2 A
The power consumption of the product in networked standby (If all network ports are connected.)		The information is available at the website below: www.olivetti.com
Interface	Standard	USB Interface Connector: 1 (Super-Speed USB) Network interface: 1 (10 BASE-T/100 BASE-TX/1000 BASE-T (IPv6, IPv4, IPSec), 802.3a supported) USB Port: 4 (Hi-Speed USB)
	Option	eKUIO: 2 ^{*2} Fax: 2 ^{*3} Wireless LAN: 1 ^{*4}
Operating Environment	Temperature	10 to 32.5°C/50 to 90.5°F
	Humidity	10 to 80 %
	Altitude	3,500 m/11,482 ft maximum
	Brightness	1,500 lux maximum
Dimension (W × D × H) (without Document Processor)		23.71" × 26.19" × 31.11" 602 × 665 × 790 mm
Weight		Approx. 180.8 lb/Approx. 83 kg (without toner container)
Space Required (W × D) (Using multipurpose tray)		36.23" × 26.19" 920 × 665 mm
Power Source		120 V Specification Model: 120 V ~ 60 Hz 12 A 230 V Specification Model: 220 to 240 V ~ 50/60 Hz 7.2 A
The power consumption of the product in networked standby (If all network ports are connected.)		The information is available at the website below: www.olivetti.com

6.1. - Main Units d-Copia 5001MF / d-Copia 6001MF continued.../

Item		Description
First Copy Time (A4, place on the platen, feed from Cassette)	Black and White	d-COPIA 5001MF 3.7 seconds or less d-COPIA 6001MF 3.4 seconds or less
Zoom Level		Manual mode: 25 to 400%, 1% increments Auto mode: Preset Zoom
Continuous Copying		1 to 9,999 sheets
Resolution		1200 × 1200 dpi (multi-bit)
Supported Original Types		Sheet, Book, 3-dimensional objects (maximum original size: A3/Ledger)
Original Feed System		Fixed

6.2. – Printer Functions

Item		Description
Printing Speed		
	d-COPIA 5001MF	12×18"/SRA3 25 sheets/min
	d-COPIA 6001MF	12×18"/SRA3 30 sheets/min
		Other than the above size, specifications are the same as those of Copy Speed.
First Print Time (A4, feed from Cassette)	Black and White	d-COPIA 5001MF 4.3 seconds or less d-COPIA 6001MF 3.8 seconds or less
Resolution		4800 dpi equivalent × 1200 dpi
Operating System		Windows 7, Windows 8.1, Windows 10, Windows Server 2008/R2, Windows Server 2012/R2, Windows Server 2016, Mac OS 10.9 or later
Interface		USB Interface Connector: 1 (Super-Speed USB) Network interface: 1 (10 BASE-T/100 BASE-TX/1000 BASE-T (IPv6, IPv4, IPSec), 802.3a supported) Optional Interface (Option): 2 (For IB-50/IB-51 mounting) Wireless LAN (Option): 1 (For IB-35 mounting)*1
Emulations		PCL6 (PCL-XL, PCL-5e), KPDL3 (PostScript3 compatible), PDF, XPS, OpenXPS

6.3. – Scanner Functions

Item	Description
Resolution	600 dpi, 400 dpi, 300 dpi, 200×400 dpi, 200 dpi, 200×100 dpi
File Format	TIFF, JPEG, XPS, Open XPS, PDF (MMR/JPEG compression), High compressive PDF, OCR Text Recognition (Option), MS Office file (Option), OOXML (Option), OOXML (OCR) (Option)
Scanning Speed^{*1}	(A4 landscape, 300 dpi, Image quality: Text/Photo original)
d-COPIA 5001MF	1-sided B/W 120 Images/min 2-sided B/W 220 Images/min Color 120 Images/min Color 220 Images/min
d-COPIA 6001MF	1-sided B/W 120 Images/min 2-sided B/W 220 Images/min Color 120 Images/min Color 220 Images/min
Interface	Ethernet (1000 BASE-T/100 BASE-TX/10 BASE-T)
Transmission System	SMB, SMTP, FTP, FTP over SSL, USB, TWAIN ^{*2} , WIA ^{*2} , WSD

*1 When using the document processor (Dual Scan with Skewed and Multifeed Detection) (except TWAIN and WIA scanning)

*2 Available Operating System: Windows Server 2008/Windows Server 2008 R2/Windows 7/Windows 8.1/Windows 10/Windows Server 2012/Windows Server 2012 R2/Windows Server 2016

6.4. – Document Feeders DP-7100, DP-7110, DP-7130

Item	Description	
	Document Processor (Automatic 2-Sided)	Document Processor (Dual scan DP)
Type	DP-7100	DP-7110/DP-7130
Original Feed Method	Automatic feed	
Supported Original Types	Sheet originals	
Paper Size	Maximum: A3/Ledger 11.69" × 17"/297 × 432 mm (Long-sized 11.69" × 74.8"/297 × 1,900 mm) Minimum: A6-R/Statement-R 4.13" × 5.82"/105 × 148 mm	
Paper Weight	1-sided: 35 to 160 g/m ² 2-sided: 50 to 120 g/m ²	1-sided: 35 to 220 g/m ² 2-sided: 50 to 220 g/m ²
Loading Capacity	140 sheets (50 to 80 g/m ²) ^{*1} maximum	270 sheets (50 to 80 g/m ²) ^{*1} maximum
Dimensions (W × D × H)	23.35" × 20.91" × 5.46" 593 × 531 × 138.5 mm	23.63" × 21.23" × 7.29" 600 × 539 × 185 mm
Weight	Approx. 19.9 lbs. Approx. 9 kg	Approx. 30.5 lbs. Approx. 13.8 kg

6.5. – Paper Cassette PF-7100

Item	Description
Paper Supply Method	Friction roller feeder (No. Sheets: 550, 64 g/m ² , 2 cassettes/ No. Sheets: 500, 80 g/m ² , 2 cassettes)
Paper Size	A3, A4, A5, A6, B4, B5, B6, 216×340 mm, SRA3, Ledger, Letter, Legal, Statement, Executive, 12×18", Oficio II, Folio, 8K, 16K, ISO B5, Envelope #10, Envelope #9, Envelope #6, Envelope Monarch, Envelope DL, Envelope C5, Envelope C4, Hagaki (Cardstock), Oufuku Hagaki (Return postcard), Kakugata 2, Youkei 4, Youkei 2, Nagagata 3, Custom (98 × 148 mm to 320 × 457 mm)
Supported Paper	Paper weight: 52 to 300 g/m ² Media types: Plain, Recycled, Special paper
Dimensions (W × D × H)	23.63" × 26.19" × 12.73" 600 × 665 × 323.2 mm
Weight	Approx. 50.8 lbs. / Approx. 23 kg

6.6. – Paper Cassette PF-7110

Item	Description
Paper Supply Method	Friction roller feeder (No. Sheets: 1,750, 64 g/m ² , 2 cassettes/ No. Sheets: 1,500, 80 g/m ² , 2 cassettes)
Paper Size	A4,B5, Letter
Supported Paper	Paper weight: 52 to 300 g/m ² Media types: Plain, Recycled, Special paper
Dimensions (W × D × H)	23.63" × 26.19" × 12.73" 600 × 665 × 323.2 mm
Weight	Approx. 66.2 lbs. / Approx. 30 kg

6.7. – Side-Mounted High-Capacity Paper Cassette PF-7120

Item	Description
Paper Supply Method	Feed & reverse roller method (No. Sheets: 3,500, 64 g/m ² / No. Sheets: 3,750, 80 g/m ²)
Paper Size	A4,B5, Letter
Supported Paper	Paper weight: 52 to 300 g/m ² Media types: Plain, Recycled, Special paper
Dimensions (W × D × H)	13.82" × 23.04" × 18.47" 351 × 585 × 469 mm
Weight	Approx. 58.5 lbs. / Approx. 26.5 kg

6.8. – Inner Finisher DF-7100

Item		Description	
Number of Trays		1 tray	
Paper Size (80 g/m ²) Finisher tray (no stapling)		A3, B4, 216×340 mm, SRA3, Ledger, Legal, 12×18", Oficio II, Folio, 8K, Envelope C4: 250 sheets A4-R, A4, A5-R, A5, A6, B5-R, B5, B6, Letter-R, Letter, Statement, Executive, 16K-R, 16K, ISO B5, Envelope #10, Envelope #9, Envelope #6 3/4, Envelope Monarch, Envelope DL, Envelope C5, Hagaki (Cardstock), Oufuku hagaki (Return postcard), Youkei 4, Youkei 2: 500 sheets	
Stapling	Number of Sheets	A3, B4, 216×340 mm, Ledger, Legal, Oficio II, 8K	30 sheets (52 to 105 g/m ²) 2 cover sheet only (106 to 300 g/m ²)
		A4-R, A4, B5, Letter-R, Letter, 16K	50 sheets (52 to 90 g/m ²) 40 sheets (91 to 105 g/m ²) 2 cover sheet only (106 to 300 g/m ²)
	Media types	Plain, Recycled, Prepunched, Preprinted, Bond, Letterhead, Color, Coated, Thick, High Quality, Custom	
Dimensions (W × D × H) (When pulling the tray)		27.36" × 20.99" × 8.69" 694.8 × 533.1 × 220.5 mm	
Weight		25.4 lbs. or less / 11.5 kg or less	

6.9. – Hole Punch Unit PH-7120/PH-7130 for DF-7100

Item			Description
Paper Size	Inch	2 Hole	A3, A4-R, A4, A5-R, B4, B5-R, B5, Ledger, Letter-R, Letter, Legal, Statement-R, 12×18", Folio, 8K, 16K-R, 16K
		3 Hole	A3, A4, Letter, Ledger, 12×18", 8K, 16K
	cm	2 Hole	A3, A4-R, A4, A5-R, B4, B5-R, B5, Ledger, Letter-R, Letter, Legal, Statement-R, 12×18", Folio, 8K, 16K-R, 16K
		4 Hole	A3, A4, Letter, Ledger, 12×18", 8K, 16K
Paper Weight			52 - 300 g/m ²
Media types			Plain, Preprinted, Bond, Recycled, Letterhead, Color, Thick, Coated, High Quality, Custom 1 to 8

6.10. – Finisher DF-7120

Item		Description	
Number of Trays		1 tray	
Paper Size (80 g/m²)	Finisher tray (Non-stapling)	A3, A5-R, B4, B5-R, B6-R, 216×340 mm, SRA3, Ledger, Legal, Statement-R, Executive, 12×18", Oficio II, Folio, 8K, 16K-R: 500 sheets A4-R, A4, B5, Letter-R, Letter, 16K: 1,000 sheets	
Supported Paper Weight		Stapling: 90 g/m ² or less	
Stapling	Number of Sheets	A3, B4, B5-R, 216×340 mm, Ledger, Legal, 12×18", Oficio II, 16K-R, 8K	30 sheets (52 to 105 g/m ²) 2 cover sheet only (106 to 300 g/m ²)
		A4-R, A4, B5, Letter-R, Letter, 16K	50 sheets (52 to 90 g/m ²) 40 sheets (91 to 105 g/m ²) 2 cover sheet only (106 to 300 g/m ²)
	Media types	Plain, Recycled, Prepunched, Preprinted, Bond, Letterhead, Color, Coated, Thick, High Quality, Custom 1 to 8	
Dimensions (W × D × H)		21.58" × 24.36" × 41.34" 548 × 618.5 × 1,050 mm	
Weight		Approx. 66.2 lbs. or less / Approx. 30 kg or less	
Space Required (W × D) (When pulling the tray)		26.23" × 24.36" 666 × 618.5 mm	

6.11. – Finisher DF-7110

Item		Description	
Number of Trays		2 trays	
Paper Size (80 g/m²)	Tray A (Non-Stapling)	A3, B4, B5-R, 216×340 mm, SRA3, Ledger, Legal, Executive, 12×18", Oficio II, Folio, 8K: 1,500 sheets A4-R, A4, B5, Letter-R, Letter, 16K-R, 16K: 4,000 sheets A5-R, B6-R, Statement-R: 500 sheets	
	Tray B	A3, A4-R, A4, A5-R, A6-R, B4, B5-R, B5, B6-R, 216×340 mm, SRA3, Ledger, Letter-R, Letter, Legal, Statement-R, Executive, 12×18", Oficio II, Folio, 8K, 16K-R, 16K, ISO B5, Envelope C4, Cardstock, Oufuku hagaki (Return postcard), Youkei 4, Youkei 2: 200 sheets	
Supported Paper Weight		Stapling: 90 g/m ² or less	
Stapling	Maximum Number	A3, B4, 216×340 mm, Ledger, Legal, 12×18", Oficio II, 8K	30 sheets (52 to 105 g/m ²) 2 cover sheet only (106 to 300 g/m ²)
		A4-R, A4, B5-R, B5, Letter-R, Letter, 16K-R, 16K	65 sheets (52 to 90 g/m ²) 55 sheets (91 to 105 g/m ²) 2 cover sheet only (106 to 300 g/m ²)
	Media types	Plain, Preprinted, Bond, Recycled, Letterhead, Color, Prepunched, Thick, Coated, High Quality, Custom 1 to 8	
Dimensions (W × D × H)		23.91" × 26.32" × 41.79" 607.2 × 668.5 × 1,061.3 mm	
Weight		Approx. 88.2 lbs. or less / Approx. 40 kg or less	
Space Required (W × D) (When pulling the tray)		28.55" × 26.32" 725 × 668.5 mm	

6.12. – Finisher DF-7130

Item		Description	
Number of Trays		2 trays	
Paper Size (80 g/m²)	Tray A (Non-Stapling)	A3, B4, B5-R, 216×340 mm, SRA3, Ledger, Legal, Executive, 12×18", Oficio II, Folio, 8K: Height 227 mm (Equivalent to 1,500 sheets) A4-R, A4, B5, Letter-R, Letter, 16K-R, 16K: Height 512 mm (Equivalent to 4,000 sheets) A5-R, B6-R, Statement-R: Height 91 mm (Equivalent to 500 sheets)	
	Tray B	A3, A4-R, A4, A5-R, A6-R, B4, B5-R, B5, B6-R, 216×340 mm, SRA3, Ledger, Letter-R, Letter, Legal, Statement-R, Executive, 12×18", Oficio II, Folio, 8K, 16K-R, 16K, ISO B5, Envelope #10, Envelope #9, Envelope #6, Envelope Monarch, Envelope DL, Envelope C5, Envelope C4, Hagaki (Cardstock), Oufuku Hagaki (Return postcard), Kakugata 2, Youkei 4, Youkei 2, Younaga 3, Nagagata 3, Nagagata 4: Height 45 mm (Equivalent to 200 sheets)	
Supported Paper Weight		Stapling: 90 g/m ² or less	
Stapling	Maximum Number	A3, B4, 216×340 mm, Ledger, Legal, 12×18", Oficio II, 8K	50 sheets (52 to 90 g/m ²) 35 sheets (91 to 105 g/m ²) 2 cover sheet only (106 to 300 g/m ²)
		A4-R, A4, B5-R, B5, Letter-R, Letter, 16K-R, 16K	100 sheets (52 to 90 g/m ²) 70 sheets (91 to 105 g/m ²) 2 cover sheet only (106 to 300 g/m ²)
	Media types	Plain, Preprinted, Bond, Recycled, Letterhead, Color, Prepunched, Thick, Coated, High Quality, Custom 1 to 8	
Dimensions (W × D × H) (When storing the tray)		29.55" × 26.18" × 43.68" 750.5 × 665 × 1109.5 mm	
Weight		Approx. 124.6 lbs. or less / Approx. 56.5 kg	
Space Required (W × D) (When pulling the tray)		34.16" × 26.18" 867.6 × 687 mm	

6.14. – Hole Punch Unit PH-7C/D for DF-7110, DF-7120, DF-7130

Item			Description
Paper Size	Inch	2 Hole	A3, A4-R, A4, A5-R, B4, B5-R, B5, Ledger, Letter-R, Letter, Legal, Statement-R, 12×18", Folio, 8K, 16K, 16K-R
		3 Hole	A3, A4, Letter, Ledger, 12×18", 8K, 16K
	cm	2 Hole	A3, A4-R, A4, A5-R, B4, B5-R, B5, Ledger, Letter-R, Letter, Legal, Statement-R, 12×18", Folio, 8K, 16K, 16K-R
		4 Hole	A3, A4, Letter, Ledger, 12×18", 8K, 16K
Paper Weight			45 - 300 g/m ²
Media types			Plain, Rough, Preprinted, Bond, Recycled, Letterhead, Color, Thick, Coated, High Quality, Custom 1 to 8

6.14. – Mailbox Unit MT-730(B) for Finisher DF-7110

Item	Description
Number of Trays	7 trays
Paper Size (80 g/m ²)	A3, B4, Ledger, Legal, 8K: 50 sheets A4-R, A4, A5-R, B5-R, B5, 216×340 mm, Letter-R, Letter, Statement-R, Executive, Oficio II, Folio, 16K-R, 16K: 100 sheets
Dimensions (W × D × H)	20.08" × 15.75" × 18.51" 510 × 400 × 470 mm
Weight	Approx. 22.1 lbs. / Approx. 10 kg

6.15. – Folding Unit BF-730 for Finisher DF-7110

Item	Description	
Sizes	Bi-Fold	A3, B4, A4-R, Ledger, Legal, Letter-R, Oficio II, 8K
	Saddle Stitch	A3, B4, A4-R, Ledger, Letter-R, Legal, Oficio II, 8K
	Tri-Fold	A4-R, Letter-R
Number of Sheets	Bi-Fold	5 sheets (60 to 90 g/m ²) 3 sheets (91 to 120 g/m ²) 1 sheet (121 to 256 g/m ²)
	Saddle Stitch	20 sheets (60 to 90 g/m ²) 13 sheets (91 to 105 g/m ²) 1 cover sheet only (106 g/m ² or heavier)
	Tri-Fold	5 sheets (60 to 90 g/m ²) 3 sheets (91 to 120 g/m ²)
Maximum Number for Storage (80 g/m ²)	Bi-Fold	5 sheets or less per set: 30 sets 6 to 10 sheets per set: 20 sets 11 to 20 sheets per set: 10 sets
	Saddle Stitch	5 sheets or less per set: 30 sets 6 to 10 sheets per set: 20 sets 11 to 20 sheets per set: 10 sets
	Tri-Fold	1 sheet per set: 30 sets 2 to 5 sheets per set: 5 sets
Media types	Bi-Fold	Plain, Recycled, Preprinted, Bond, Color, Prepunched, Letterhead, Thick, Coated, High Quality, Custom 1 to 8
	Saddle Stitch	Plain, Recycled, Preprinted, Bond, Color, Prepunched, Letterhead, Thick, Coated, High Quality, Custom 1 to 8
	Tri-Fold	Plain, Recycled, Preprinted, Bond, Color, Prepunched, Letterhead, Coated, High Quality, Custom 1 to 8

6.16. – Folding unit BF-9100 for finisher DF-7130

Item	Description	
Sizes	Bi-Fold	A3, B4, A4-R, SRA3, Ledger, Legal, Letter-R, Oficio II, 8K, 12×18"
	Saddle Stitch	A3, B4, A4-R, SRA3, Ledger, Letter-R, Legal, Oficio II, 8K, 12×18"
	Tri-Fold	A4-R, Letter-R
Number of Sheets	Bi-Fold	5 sheets (52 to 90 g/m ²) 3 sheets (91 to 105 g/m ²) 1 sheet (106 to 256 g/m ²)
	Saddle Stitch	20 sheets (52 to 90 g/m ²) 13 sheets (91 to 105 g/m ²) 1 cover sheet only (106 g/m ² or heavier)
	Tri-Fold	5 sheets (52 to 90 g/m ²) 3 sheets (91 to 105 g/m ²)
Maximum Number for Storage (80 g/m²)	Bi-Fold	5 sheets or less per set: 20 sets 6 to 10 sheets per set: 10 sets 11 to 20 sheets per set: 10 sets
	Saddle Stitch	5 sheets or less per set: 25 sets 6 to 10 sheets per set: 10 sets 11 to 20 sheets per set: 10 sets
	Tri-Fold	1 sheet per set: 50 sets 2 to 5 sheets per set: 25 sets
Media types	Bi-Fold	Plain, Recycled, Preprinted, Bond, Color, Prepunched, Letterhead, Thick, Coated, High Quality, Custom 1 to 8
	Saddle Stitch	Plain, Recycled, Preprinted, Bond, Color, Prepunched, Letterhead, Thick, Coated, High Quality, Custom 1 to 8
	Tri-Fold	Plain, Recycled, Preprinted, Bond, Color, Prepunched, Letterhead, Coated, High Quality, Custom 1 to 8

6.17. – Job Separator JS-7100

Item	Description
Number of Trays	1 tray
Maximum Sheets	100 Sheets (80 g/m ²)
Paper Size	A3, A4-R, A4, A5-R, A5, A6-R, B4, B5-R, B5, B6-R, 216×340 mm, SRA3, Ledger, Letter-R, Letter, Legal, Statement-R, Executive, 12×18", Oficio II, Folio, 8K, 16K-R, 16K, ISO B5, Envelope #10, Envelope #9, Envelope #6, Envelope Monarch, Envelope DL, Envelope C5, Envelope C4, Hagaki (Cardstock), Oufuku hagaki (Return postcard), Youkei 4, Youkei 2, Custom (98 × 148 to 304.8 × 1,220 mm)
Paper Type	Paper weight: 52 to 300 g/m ² Media types: Plain, Recycled, Special paper
Dimensions (W × D × H)	18.78" × 16.52" × 2.52" 477 × 419.6 × 64 mm
Weight	Approx. 1.6 lbs. / Approx. 0.7 kg

6.18. – Banner Guide 10

Item	Description
Max. number of sheets	10 sheets (Multipurpose tray)
Paper length	210 to 304.8 mm (8.26" to 12")
Paper width	Max. 1,220.0 mm (48.03")
Paper Type	Paper weight: 136 to 163 g/m ² Paper type: Heavy 2
Dimensions (W × D × H)	15.78" × 15.67" × 7.63" 400.6 × 397.8 × 193.6 mm
Weight	Approx. 1.2 lbs. / Approx. 0.5 kg

6.19. – Fax System 12

Item	Description
Compatibility	G3
Communication Line	Subscriber telephone line
Transmission Time	Less than 3 seconds (33600 bps, JBIG, ITU-T A4-R #1 chart)
Transmission Speed	33600/31200/28800/26400/24000/21600/19200/16800/14400/12000/9600/7200/4800/2400 bps
Coding Scheme	JBIG/MMR/MR/MH
Error Correction	ECM
Original Size	Max. width: 11"/297 mm, Max. length: 63"/1,600 mm
Automatic Document Feed	Max. 270 sheets (with document processor)
Resolution	Scan: 200 × 100 dpi Normal (8 dot/mm × 3.85 line/mm) 200 × 200 dpi Fine (8 dot/mm × 7.7 line/mm) 200 × 400 dpi Super (Super Fine) (8 dot/mm × 15.4 line/mm) 400 × 400 dpi Ultra (Ultra Fine) (16 dot/mm × 15.4 line/mm) 600 × 600 dpi Print: 600×600 dpi
Gradations	256 shades (Error diffusion)
One Touch Key	1,000 keys
Multi-Station Transmission	Max. 500 destinations (Maximum number of stations: 500, maximum of 100 stations for i-Fax)
Substitute Memory Reception	7,000 sheets or more (when using ITU-T A4 #1)
Image Memory Capacity	170 MB
Report Output	Send result report, FAX RX result report, Activity report, Status page
Option	Dual Port, Internet FAX Kit

6.20 - NK-7120 "Optional Numeric Keypad"

The numeric keypad is added to the operation panel. If the optional numeric keypad is installed, numeric keys do not appear on the touch panel.

6.21 - DT-730 (B) "Document Table"

Place original or other documents when using the machine.

6.22 - Keyboard Holder 10 "Keyboard Holder"

A USB keyboard connected to the machine can be placed here.

6.23 - IB-50 "Network Interface Kit"

The Network Interface Kit provides a high-speed connection for the Gigabit-per-second interface. This kit supports traditional protocols such as AppleTalk, Netware and so on. It also supports only the least functions in the standard utilities.

6.24 - IB-51 "Wireless Network Interface Kit"

This is a wireless LAN interface card which supports the wireless LAN specifications IEEE802.11n (Max 300 Mbps) and 11 g/b.

This supports traditional protocols such as AppleTalk, Netware and so on.

It also supports only the least functions in the standard utilities.

The IB-51 Set up utility supports Windows OS and Mac OS X.

6.25 - IB-35 "Wireless Network Interface Kit"

This is a wireless LAN interface card which supports the wireless LAN specifications IEEE802.11n (max. 65 Mbps) and IEEE802.11 g/b.

In addition, network printing is possible without using the wireless LAN router because Wi-Fi Direct is supported.

6.26 - Internet Fax Kit(A)

Activating the Internet FAX Kit sends and receives faxes via the Internet without using a phone line. It can only be added when the FAXSYSTEM 12 Kit is installed.

6.27 - UG-33 "ThinPrint Option"

This application allows print data to be printed directly without a print driver.

6.28 - UG-34 "Emulation Upgrade Kit"

Enables emulation whereby the machine operates using commands for other printers. Installing this option enables IBM Proprinter, Line Printer, and EPSON LQ-850 emulation.

6.29 - Scan Extension Kit(A)

This option enables the use of the OCR Text Recognition function in the applications of the machine.

7. Product Library

A DVD-ROM is supplied together with each d-Copia 5001MF / d-Copia 6001MF containing the Drivers, Utilities and Documentation listed in this chapter.



7.1 – Printer Drivers for Windows

Printer Drivers	Win XP Win Vista Win 8	Win 7	Win Server 2003	Win Server 2008 Server 2008 R2	Win 8.1	Win 10	Win Server 2012 Server 2012 R2	Win Server 2016 Server 2019
Printing System Driver (Generic)	✓		✓					
Printing System Driver		✓		✓	✓	✓	✓	✓
Printing System (XPS) Driver		✓		✓	✓	✓	✓	✓
PCL Mini Driver (Generic)	✓		✓					
PCL Mini Driver		✓		✓	✓	✓	✓	✓
KPDL Mini Driver (Generic)	✓		✓					
KPDL Mini Driver		✓		✓	✓	✓	✓	✓

7.2 – Other Printer Drivers

Mac Driver	MAC OS 10.9 - 10.14
PPD Driver	✓

Linux Driver

7.3 – Fax & Scanner Drivers

FAX and Scanner Drivers	Win 7	Win Server 2008 Server 2008 R2	Win 8.1	Win 10	Win Server 2012 Server 2012 R2	Win Server 2016 Server 2019
TWAIN Driver	✓	✓	✓	✓	✓	✓
WIA Driver	✓	✓	✓	✓	✓	✓
FAX Driver	✓	✓	✓	✓	✓	✓

7.4 – Software Utilities

Utilities	Win 7	Win Server 2008 Server 2008 R2	Win 8.1	Win 10	Win Server 2012 Server 2012 R2	Win Server 2016 Server 2019
NETWORK PRINT MONITOR*		✓	✓	✓	✓	✓
Network Tool for Direct Printing	✓	✓	✓	✓	✓	✓
Quick Network Setup	✓		✓	✓		
File Management Utility	✓	✓	✓	✓	✓	✓
Wi-Fi Setup Tool	✓	✓	✓	✓	✓	✓
ScanToSMB	✓	✓	✓	✓	✓	✓

(*) Does not support local connection.

7.5 – Software Utilities by Functions

Network Print Monitor:

Allows the organisation and monitoring of network device information with the many different features that are available, through default views, as well as custom views that can be created.

Network Tool for Direct Printing:

This utility allows the user to send printable files, including PDF files, through a Windows spooler to the printing device that has PDF direct printing capability. It allows the printout of PDF files, downloaded from the Internet, without starting Adobe Acrobat/Reader.

File Management Utility:

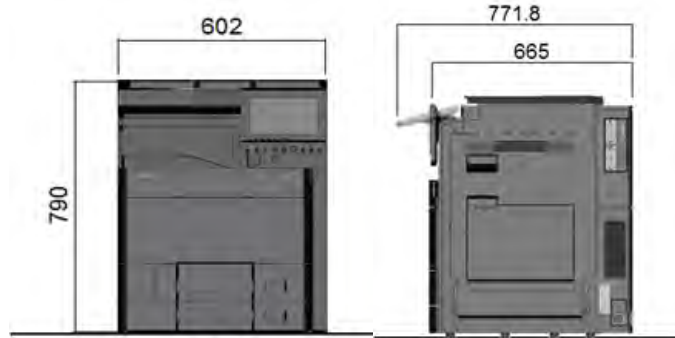
The File Management Utility (FMU) distributes documents scanned on an MFP to specified network folders or computers. The user can set the criteria for distributing the scanned files. Advanced distribution criteria are available for certain MFPs.

7.6 – User Guides

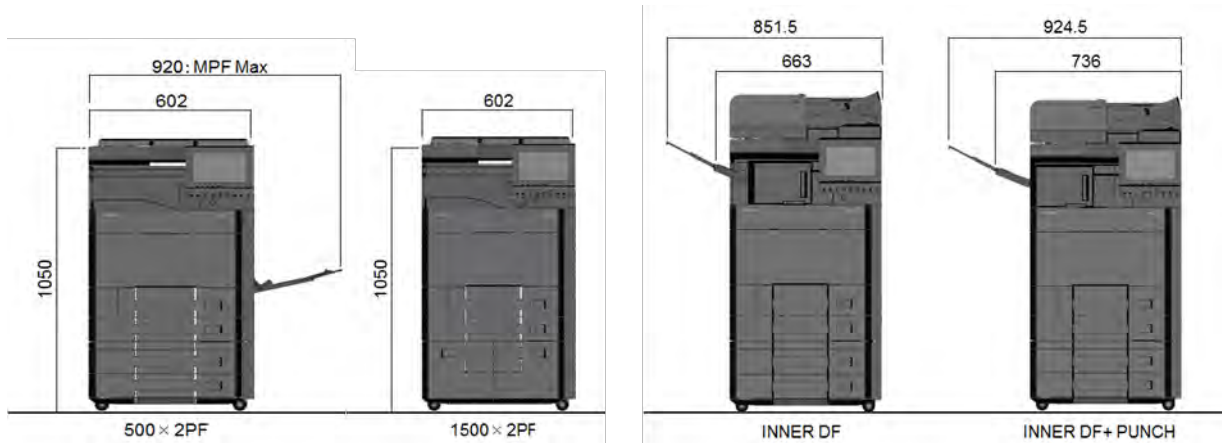
The User Guides for the d-Copia 5001MF / d-Copia 6001MF are available in PDF format in the following languages: English, French, Italian, German, Spanish, Russian, Portuguese, Arabic, Catalan, Czech, Danish, Greek, Finnish, Hebrew, Hungarian, Dutch, Norwegian, Polish, Romanian, Swedish, Turkish.

The User Guide of Fax System 12 option are available in PDF format in the following languages: English, French, Italian, German, Spanish.

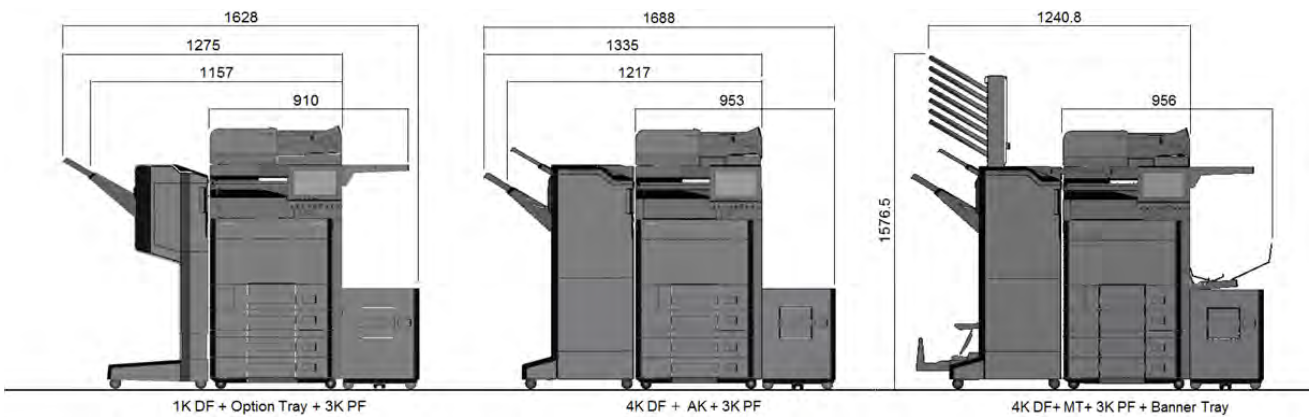
8. Dimensions



Basic Unit dimensions: front view (left) and side view



From left to right, dimensions with PF-7100, PF-7110, DF-7100, DF-7100 with PH-7120



From left to right, dimensions with DF-7120+PF-7120, DF-7110+PF-7120, DF-7110 +MT-730+PF-7120 with PH-7120

9. Marketing Material

The promotional brochures d-Copia 5001MF / d-Copia 6001MF will be available within September'19 in the following language: Italian, English, French, Spanish, German.

The Olivetti web site (www.olivetti.com) will be updated in September '19 with all information regarding the new devices, including their high-resolution photos. The Olivetti Agency UK website will also feature relevant Marketing and Support Materials for these products: (www.olivettiagency.uk)

10. Service

Product Support Plan	Expected Availability
Product Support Plan (PSP) - English	September '19
Logistic Support Plan (PLS) - English	September '19
Service Manual - English	September '19
Spare Parts Catalogue - Italian / English	September '19

11. Quality Approvals

d-Copia 5001MF and d-Copia 6001MF bear the following marks:

- CE Mark
- TÜV-GS Safety Mark

They are also compliant with both RoHS and WEEE.

12. CE Declaration of Conformity

Declaration of Conformity is available at:

["http://www.olivetti.com/en/advanced-caring/assurance-and-support/download-area/certificates"](http://www.olivetti.com/en/advanced-caring/assurance-and-support/download-area/certificates).

13. Competition to the Olivetti d-Copia 5001MF

The main characteristics of the new d-Copia 5001MF are compared with those of relevant competitors' models in the tables that follow.

Each table compares our models with a competitor model with the same, or the closest speed for copying/printing.

- Canon ImageRUNNER ADVANCE 4551i III
- HP LaserJet Managed MFP E52550dn
- Konica-Minolta Bizhub 558e
- Lexmark MX910de
- Ricoh MP 5055ASP
- Samsung MultiExpress K7500GX
- Toshiba e-STUDIO5018A
- Xerox AltaLink B8045

d-Copia 5001MF selling against Canon ImageRUNNER ADVANCE 4551i III

	Olivetti d-COPIA 5001MF	Canon imageRUNNER ADVANCE 4551i III
OEM	KYOCERA (China)	Canon (Thailand)
Also Sold As	KYOCERA TASKalfa 5003i;	None
TYPE	Monochrome copier, MF	Monochrome copier, MF
Configuration/Scanner	Desktop,digital	Console,digital
Technology	Laser	Laser
GENERAL SPECIFICATIONS/PAPER HANDLING		
First Copy Time	3.7 sec	3.7 sec
Multicopy (Ltr/Lgl/Ldgr)	50/25 cpm	51/25 cpm
Warm-up Time	17 sec	24 sec
Std Paper Source(s)	Dual drawer	Dual drawer
Std Paper Capacity	500/500 sheets	550/550 sheets
Paper Weights	52 to 300 gsm	60 to 128 gsm
Bypass/Paper Weights	150-sheet/52 to 300 gsm	100-sheet/52 to 220 gsm
Max Paper Sources	5	5
Max Paper Capacity	7,150 sheets	6,350 sheets
Max Original Size	A3	297.1 x 431.8
Output Size (Min/Max)	A6/SRA3	98 x 148/297 x 431.8
Copy Resolution	600 x 600 dpi	600 x 600 dpi
System Memory (Std/Max)	4-GB RAM, 8-GB and 320-GB HD/4-GB RAM, 8-GB and 320-GB HD	3-GB RAM, 250-GB HD/3-GB RAM, 1-TB HD
Document Feeder	Opt RADF, DSPF and DSPF	Opt RADF and DSPF
Document Feeder Capacity	140 orig, 270 orig, 270 orig	100 orig, 150 orig
Paper Weights	35 to 160 gsm, 35 to 220 gsm	38 to 128 gsm, 38 to 157 gsm
Finisher	Opt finishers	Opt finishers
Tray/Stapling/Position(s)	500, 1,000, 4,000, 4,000/50, 50, 65, 100/3	545, 3,250, 3,250/50/3
SECURITY SPECS		
Network User Authentication	Yes	Yes
IP Address Filtering	Yes	Yes
MAC Address Filtering	Yes	Yes
HDD Overwrite	Std	Std
Max Overwrites	3	9
HDD Encryption	Std	Std
Secure Print	Yes	Yes
Encrypted Secure Print	Yes	Yes
Encrypted PDF Mode (Encrypted Scanning)	Yes	Yes
IPsec	Yes	Yes
Secure Sockets Layer (SSL)	Yes	Yes
SNMPv3	Yes	Yes
Transport Layer Security	Yes	Yes
CONTROL PANEL		
Quantity Selector	257 mm color touchscreen	Keypad and 256 mm color touchscreen
Message Display	1 to 9,999 (0 to 9 touch keys)	1 to 9,999 (0 to 9 keypad)
Help Key	Yes	Yes
ADDITIONAL INFORMATION		
Dimensions (HxWxD)	790 mm x 602 mm x 665 mm	822 mm x 587 mm x 728 mm
Weight	83 kg	73 kg
Power Requirements	220-240 V, 7.2 A	220-240 V, 5.6 A
Energy Used While Power Off	0.3W	0.3W
Energy Used in Power Save Mode	0.7W	0.9W
Energy Used in Ready Mode	50W	37W
Energy Used While Copying	740W	Info not avail
Energy Used While Printing	740W	882W
Energy Used While Scanning	Info not avail	Info not avail
Max Power Consumption	1750W	1500W
TEC Value	2.4KWh	Info not avail
Dedicated Outlet	Recommended	Not required
Energy Star Compliant	Yes	Yes
Operating Noise Level	53.1 dB	56 dB

d-Copia 5001MF selling against Canon ImageRUNNER ADVANCE 4551i III (Cont.)

	Olivetti d-COPIA 5001MF	Canon imageRUNNER ADVANCE 4551i III
MULTIFUNCTION MODES		
Copier	Std	Std
Internet Fax	Opt	Std
Network Printer	Std	Std
Printer	Std	Std
Fax	Opt	Opt
Network Fax	Opt	Opt
PC Fax	Opt	Opt
Scanner	Std	Std
CONNECTIVITY SPECIFICATIONS		
Operating System Support	Win XP, Server 2003, Vista, Server 2008, 7, Server 2012, 8, 8.1, 10, Mac OS X 10.9+, Linux, UNIX	Win Server 2008, 7, Server 2012, 8.1, 10, Server 2016, Mac OS X 10.7+, Citrix, Linux, UNIX
Parallel Interface	None	None
Serial Interface	None	Opt
USB Interface	Std 2.0, std 2.0 (host) x 4	Std 2.0, std 2.0 (host) x 2, std 3.0 (host)
Network Interface	Std Ethernet, opt wireless	Std Ethernet, std wireless, opt wireless
Interface Type	10/100/1000BaseTX, 802.11b/g/n	10/100/1000BaseTX, 802.11b/g/n, Bluetooth
Mobile Print Support	Yes (Apple AirPrint, Olivetti Mobile Print, Wi-Fi Direct)	Yes (Apple AirPrint, Canon Business Print, Google Cloud Print, Mopria Print Service, UniFLOW Online)
Near Field Communication	Std	Opt
Embedded Software Platform or Extensible Solutions Interface	Java and Web Solutions (JAWS)	Multifunctional Embedded Application Platform (MEAP)
FACSIMILE SPECIFICATIONS		
Scanner Technology	CCD	Proprietary image sensor
Compression Method	MH/MR/MMR/JBIG	MH/MR/MMR/JBIG
Modem Speed	33.6 Kbps	33.6 Kbps
Max TX Resolution	600 x 600 dpi	400 x 400 dpi
Gray Scale/Halftones	Info not avail	256 levels
Transfer Hub	Info not avail	Yes
DIALING CAPABILITIES		
Broadcasting (Groups/Dest)	Info not avail/500	199/256
Redial (Attempts/Intervals)	Info not avail	10/2 to 99 min
One Touch	1000	Info not avail
PRINTER SPECIFICATIONS		
Engine Mfr & Model	KYOCERA/TASKalfa 5003i	Canon/imageRUNNER ADVANCE 4551i III
Compatibility	PC, Mac	PC, Mac
Speed	50 ppm	51 ppm
First-Page-Out Time	4.3 sec	Info not avail
Max Print Area	312 x 442	Info not avail
Print from USB	Yes (JPEG, PDF, TIFF, XPS)	Yes (EPS, JPEG, PDF, TIFF, XPS)
Enhanced Resolution	9600 x 600 dpi	Not applicable
Unenhanced Resolution	1200 x 1200 dpi	1200 x 1200 dpi
Std/Max Printer Memory	Shared	Shared
Controller Mfr/Model	KYOCERA/Info not avail	Canon/Info not avail
Processor/Bits/MHz	Freescale QorIQ T1024/Info not avail/1.2 GHz	Canon dual custom processor/Info not avail/1.75 GHz
SCANNER AND IMAGE MANAGEMENT SPECIFICATIONS		
Technology/Scan Speed	CCD/80 ipm color, 80 ipm black or 100 ipm color, 100 ipm black or 120 ipm color, 120 ipm black	Proprietary image sensor/70 ipm color, 70 ipm black or 80 ipm color, 80 ipm black
Max Resolution	600 x 600 dpi	600 x 600 dpi
TWAIN Compatible	Yes	Yes
Scan Destinations		
Cloud	Yes	Yes
I-fax	Yes	Yes
FTP	Yes	Yes
SMB	Yes	Yes
HDD	Yes	Yes
URL	No	Yes
USB	Yes	Yes

d-Copia 5001MF selling against HP LaserJet Managed MFP E52550dn

	Olivetti d-COPIA 5001MF	HP LaserJet Managed MFP E82550dn
OEM	KYOCERA (China)	Samsung (China/Mexico)
Also Sold As	KYOCERA TASKalfa 5003i;	None
TYPE	Monochrome copier, MF	Monochrome copier, MF
Configuration/Scanner	Desktop,digital	Desktop,digital
Technology	Laser	Laser
GENERAL SPECIFICATIONS/PAPER HANDLING		
First Copy Time	3.7 sec	6 sec
Multicopy (Ltr/Lgl/Ldgr)	50/25 cpm	50 cpm/Info not avail
Warm-up Time	17 sec	20.5 sec
Std Paper Source(s)	Dual drawer	Dual drawer
Std Paper Capacity	500/500 sheets	520/520 sheets
Paper Weights	52 to 300 gsm	60 to 300 gsm
Bypass/Paper Weights	150-sheet/52 to 300 gsm	100-sheet/60 to 300 gsm
Max Paper Sources	5	6
Max Paper Capacity	7,150 sheets	6,140 sheets
Max Original Size	A3	320 x 457.2
Output Size (Min/Max)	A6/SRA3	98 x 139.7/320 x 457.2
Copy Resolution	600 x 600 dpi	600 x 600 dpi
System Memory (Std/Max)	4-GB RAM, 8-GB and 320-GB HD/4-GB RAM, 8-GB and 320-GB HD	7-GB RAM, 320-GB HD x 2/7-GB RAM, 320-GB HD x 2
Document Feeder	Opt RADF, DSPF and DSPF	Std DSPF
Document Feeder Capacity	140 orig, 270 orig, 270 orig	250 orig
Paper Weights	35 to 160 gsm, 35 to 220 gsm	42 to 220 gsm
Finisher	Opt finishers	Opt finishers
Tray/Stapling/Position(s)	500, 1,000, 4,000, 4,000/50, 50, 65, 100/3	3,000/50/3
SECURITY SPECS		
Network User Authentication	Yes	Yes
IP Address Filtering	Yes	Yes
MAC Address Filtering	Yes	Yes
HDD Overwrite	Std	Std
Max Overwrites	3	9
HDD Encryption	Std	Std
Secure Print	Yes	Yes
Encrypted Secure Print	Yes	Yes
Encrypted PDF Mode (Encrypted Scanning)	Yes	Yes
IPsec	Yes	Yes
Secure Sockets Layer (SSL)	Yes	Yes
SNMPv3	Yes	Yes
Transport Layer Security	Yes	Yes
CONTROL PANEL	257 mm color touchscreen	203 mm color touchscreen
Quantity Selector	1 to 9,999 (0 to 9 touch keys)	1 to 999 (0 to 9 touch keys)
Message Display	Yes	Yes
Help Key	Yes	Yes
ADDITIONAL INFORMATION		
Dimensions (HxWxD)	790 mm x 602 mm x 665 mm	932 mm x 585 mm x 785 mm
Weight	83 kg	95.6 kg
Power Requirements	220-240 V, 7.2 A	220-240 V, Amps not avail
Energy Used While Power Off	0.3W	0.1W
Energy Used in Power Save Mode	0.7W	11W
Energy Used in Ready Mode	50W	65W
Energy Used While Copying	740W	Info not avail
Energy Used While Printing	740W	998W
Energy Used While Scanning	Info not avail	Info not avail
Max Power Consumption	1750W	Info not avail
TEC Value	2.4KWh	3.299KWh
Dedicated Outlet	Recommended	Recommended
Energy Star Compliant	Yes	Yes
Operating Noise Level	53.1 dB	50 dB

d-Copia 5001MF selling against HP LaserJet Managed MFP E52550dn (Cont.)

	Olivetti d-COPIA 5001MF	HP LaserJet Managed MFP E82550dn
MULTIFUNCTION MODES		
Copier	Std	Std
Internet Fax	Opt	INA
Network Printer	Std	Std
Printer	Std	Std
Fax	Opt	Opt
Network Fax	Opt	Opt
PC Fax	Opt	Std
Scanner	Std	Std
CONNECTIVITY SPECIFICATIONS		
Operating System Support	Win XP, Server 2003, Vista, Server 2008, 7, Server 2012, 8, 8.1, 10, Mac OS X 10.9+, Linux, UNIX	Win XP, Server 2003, Vista, Server 2008, 7, Server 2012, 8, 8.1, 10, Mac OS 10.10, 10.11, 10.12, Citrix, Linux, UNIX
Parallel Interface	None	None
Serial Interface	None	None
USB Interface	Std 2.0, std 2.0 (host) x 4	Std 2.0, opt 2.0 (host) x 2
Network Interface	Std Ethernet, opt wireless	Std Ethernet, opt wireless
Interface Type	10/100/1000BaseTX, 802.11b/g/n	10/100/1000BaseTX, 802.11b/g/n
Mobile Print Support	Yes (Apple AirPrint, Olivetti Mobile Print, Wi-Fi Direct)	Yes (Apple AirPrint, Google Cloud Print, HP ePrint, Wi-Fi Direct)
Near Field Communication	Std	Opt
Embedded Software Platform or Extensible Solutions Interface	Java and Web Solutions (JAWS)	Open Extensibility Platform (OXP)
FACSIMILE SPECIFICATIONS		
Scanner Technology	CCD	CCD
Compression Method	MH/MR/MMR/JBIG	MH/MR/MMR/JBIG
Modem Speed	33.6 Kbps	33.6 Kbps
Max TX Resolution	600 x 600 dpi	300 x 300 dpi
Gray Scale/Halftones	Info not avail	256 levels
Transfer Hub	Info not avail	Info not avail
DIALING CAPABILITIES		
Broadcasting (Groups/Dest)	Info not avail/500	100/500
Redial (Attempts/Intervals)	Info not avail	13/1 to 15
One Touch	1000	Info not avail
PRINTER SPECIFICATIONS		
Engine Mfr & Model	KYOCERA/TASKalfa 5003i	Samsung and HP/E82550dn
Compatibility	PC, Mac	PC, Mac
Speed	50 ppm	50 ppm
First-Page-Out Time	4.3 sec	6.9 sec
Max Print Area	312 x 442	Info not avail
Print from USB	Yes (JPEG, PDF, TIFF, XPS)	Yes (JPEG, PDF, TIFF, XPS)
Enhanced Resolution	9600 x 600 dpi	1200 x 1200 dpi
Unenhanced Resolution	1200 x 1200 dpi	600 x 600 dpi
Std/Max Printer Memory	Shared	Shared
Controller Mfr/Model	KYOCERA/Info not avail	Info not avail
Processor/Bits/MHz	Freescale QorIQ T1024/Info not avail/1.2 GHz	Quad Core/Info not avail/1.2 GHz
SCANNER AND IMAGE MANAGEMENT SPECIFICATIONS		
Technology/Scan Speed	CCD/80 ipm color, 80 ipm black or 100 ipm color, 100 ipm black or 120 ipm color, 120 ipm black	CCD/90 ipm color, 90 ipm black
Max Resolution	600 x 600 dpi	600 x 600 dpi
TWAIN Compatible	Yes	Yes
Scan Destinations		
Cloud	Yes	Yes
I-fax	Yes	INA
FTP	Yes	Yes
SMB	Yes	Yes
HDD	Yes	Yes
URL	No	INA
USB	Yes	Yes

© 2019 Buyers Laboratory LLC

d-Copia 5001MF selling against Konica-Minolta Bizhub 558e

	Olivetti d-COPIA 5001MF	Konica Minolta bizhub 558e
Domestic Intro Date	February 2019	December 2018
OEM	KYOCERA (China)	Konica Minolta (China)
Also Sold As	KYOCERA TASKalfa 5003i;	DEVELOP ineo 558e
TYPE	Monochrome copier, MF	Monochrome copier, MF
Configuration/Scanner	Desktop,digital	Desktop,digital
Technology	Laser	Laser
GENERAL SPECIFICATIONS/PAPER HANDLING		
First Copy Time	3.7 sec	3.5 sec
Multicopy (Ltr/Lgl/Ldgr)	50/25 cpm	55/27 cpm
Warm-up Time	17 sec	22 sec
Std Paper Source(s)	Dual drawer	Dual drawer
Std Paper Capacity	500/500 sheets	500/500 sheets
Paper Weights	52 to 300 gsm	52 to 256 gsm
Bypass/Paper Weights	150-sheet/52 to 300 gsm	150-sheet/60 to 300 gsm
Max Paper Sources	5	5
Max Paper Capacity	7,150 sheets	6,650 sheets
Max Original Size	A3	A3
Output Size (Min/Max)	A6/SRA3	A6/SRA3
Copy Resolution	600 x 600 dpi	600 x 600 dpi
System Memory (Std/Max)	4-GB RAM, 8-GB and 320-GB HD/4-GB RAM, 8-GB and 320-GB HD	4-GB RAM, 250-GB HD/4-GB RAM, 250-GB HD
Document Feeder	Opt RADF, DSPF and DSPF	Std DSPF
Document Feeder Capacity	140 orig, 270 orig, 270 orig	300 orig
Paper Weights	35 to 160 gsm, 35 to 220 gsm	35 to 210 gsm
Finisher	Opt finishers	Opt finishers
Tray/Stapling/Position(s)	500, 1,000, 4,000, 4,000/50, 50, 65, 100/3	500, 3,200, 3,200, 2,700, 2,700/50, 100, 100, 50, 100/3
SECURITY SPECS		
Network User Authentication	Yes	Yes
IP Address Filtering	Yes	Yes
MAC Address Filtering	Yes	Yes*
HDD Overwrite	Std	Std
Max Overwrites	3	8
HDD Encryption	Std	Std
Secure Print	Yes	Yes
Encrypted Secure Print	Yes	Opt
Encrypted PDF Mode (Encrypted Scanning)	Yes	Std
IPsec	Yes	Yes
Secure Sockets Layer (SSL)	Yes	Yes
SNMPv3	Yes	Yes
Transport Layer Security	Yes	Yes
CONTROL PANEL		
Quantity Selector	1 to 9,999 (0 to 9 touch keys)	1 to 9,999 (0 to 9 touch keys)
Message Display	Yes	Yes
Help Key	Yes	Yes
ADDITIONAL INFORMATION		
Dimensions (HxWxD)	790 mm x 602 mm x 665 mm	961 mm x 615 mm x 755 mm
Weight	83 kg	96 kg
Power Requirements	220-240 V, 7.2 A	220-240 V, 9 A
Energy Used While Power Off	0.3W	Info not avail
Energy Used in Power Save Mode	0.7W	Info not avail
Energy Used in Ready Mode	50W	Info not avail
Energy Used While Copying	740W	Info not avail
Energy Used While Printing	740W	Info not avail
Energy Used While Scanning	Info not avail	Info not avail
Max Power Consumption	1750W	2000W
TEC Value	2.4KWh	Info not avail
Dedicated Outlet	Recommended	Recommended
Energy Star Compliant	Yes	Yes
Operating Noise Level	53.1 dB	70.8 dB

d-Copia 5001MF selling against Konica-Minolta Bizhub 558e (Cont.)

	Olivetti d-COPIA 5001MF	Konica Minolta bizhub 558e
MULTIFUNCTION MODES		
Copier	Std	Std
Internet Fax	Opt	Std
Network Printer	Std	Std
Printer	Std	Std
Fax	Opt	Opt
Network Fax	Opt	Opt
PC Fax	Opt	Opt
Scanner	Std	Std
CONNECTIVITY SPECIFICATIONS		
Operating System Support	Win XP, Server 2003, Vista, Server 2008, 7, Server 2012, 8, 8.1, 10, Mac OS X 10.9+, Linux, UNIX	Win Server 2008, 7, Server 2012, 8, 8.1, 10, Server 2016, Mac OS X 10.8+, Citrix, Linux, Unix
Parallel Interface	None	None
Serial Interface	None	None
USB Interface	Std 2.0, std 2.0 (host) x 4	Std 2.0, std (host)
Network Interface	Std Ethernet, opt wireless	Std Ethernet, opt wireless
Interface Type	10/100/1000BaseTX, 802.11b/g/n	10/100/1000BaseTX, 802.11b/g/n
Mobile Print Support	Yes (Apple AirPrint, Olivetti Mobile Print, Wi-Fi Direct)	Yes (Apple AirPrint, Google Cloud Print, Konica Minolta Mobile Print, Mopria Print Service, Wi-Fi Direct)
Near Field Communication	Std	Std
Embedded Software Platform or Extensible Solutions Interface	Java and Web Solutions (JAWS)	bizhub Extended Solution Technology (bEST)
FACSIMILE SPECIFICATIONS		
Scanner Technology	CCD	CCD
Compression Method	MH/MR/MMR/JBIG	MH/MR/MMR/JBIG
Modem Speed	33.6 Kbps	33.6 Kbps
Max TX Resolution	600 x 600 dpi	600 x 600 dpi
Gray Scale/Halftones	Info not avail	256 levels
Transfer Hub	Info not avail	Yes
DIALING CAPABILITIES		
Broadcasting (Groups/Dest)	Info not avail/500	100/605
Redial (Attempts/Intervals)	Info not avail	7/1 to 15 min
One Touch	1000	None
PRINTER SPECIFICATIONS		
Engine Mfr & Model	KYOCERA/TASKalfa 5003i	Konica Minolta/bizhub 558e
Compatibility	PC, Mac	PC, Mac
Speed	50 ppm	55 ppm
First-Page-Out Time	4.3 sec	3.5 sec
Max Print Area	312 x 442	311.2 x 457.2
Print from USB	Yes (JPEG, PDF, TIFF, XPS)	Yes (DOCX, JPEG, PDF, compact PDF, PPML, PPTX, TIFF, VDX, XLSX, XPS, compact XPS, ZIP)
Enhanced Resolution	9600 x 600 dpi	1800 x 600 dpi
Unenhanced Resolution	1200 x 1200 dpi	1200 x 1200 dpi
Std/Max Printer Memory	Shared	Shared
Controller Mfr/Model	KYOCERA/Info not avail	Konica Minolta/Emperon
Processor/Bits/MHz	Freescale QorIQ T1024/Info not avail/1.2 GHz	ARM Cortex MB86S72/Info not avail/1.6 GHz
SCANNER AND IMAGE MANAGEMENT SPECIFICATIONS		
Technology/Scan Speed	CCD/80 ipm color, 80 ipm black or 100 ipm color, 100 ipm black or 120 ipm color, 120 ipm black	CCD/120 ipm color, 120 ipm black
Max Resolution	600 x 600 dpi	600 x 600 dpi
TWAIN Compatible	Yes	Yes
Scan Destinations		
Cloud	Yes	Yes
I-fax	Yes	Yes
FTP	Yes	Yes
SMB	Yes	Yes
HDD	Yes	Yes
URL	No	Yes
USB	Yes	Yes

© 2019 Buyers Laboratory LLC

d-Copia 5001MF selling against Lexmark MX910de

	Olivetti d-COPIA 5001MF	Lexmark MX910de
OEM	KYOCERA (China)	Lexmark (China)
Also Sold As	KYOCERA TASKalfa 5003i;	Info not avail
TYPE	Monochrome copier, MF	Monochrome printer, MF
Configuration/Scanner	Desktop,digital	Desktop,digital
Technology	Laser	Laser
GENERAL SPECIFICATIONS/PAPER HANDLING		
First Copy Time	3.7 sec	5.8 sec
Multicopy (Ltr/Lgl/Ldgr)	50/25 cpm	45 cpm/Info not avail
Warm-up Time	17 sec	None
Std Paper Source(s)	Dual drawer	Dual drawer
Std Paper Capacity	500/500 sheets	500/500 sheets
Paper Weights	52 to 300 gsm	60 to 256 gsm
Bypass/Paper Weights	150-sheet/52 to 300 gsm	150-sheet/60 to 256 gsm
Max Paper Sources	5	6
Max Paper Capacity	7,150 sheets	6,650 sheets
Max Original Size	A3	A3
Output Size (Min/Max)	A6/SRA3	88.9 x 139.7/SRA3
Copy Resolution	600 x 600 dpi	600 x 600 dpi
System Memory (Std/Max)	4-GB RAM, 8-GB and 320-GB HD/4-GB RAM, 8-GB and 320-GB HD	1-GB RAM, 320-GB+ HD/3-GB RAM, 320-GB+ HD
Document Feeder	Opt RADF, DSPF and DSPF	Std DSPF
Document Feeder Capacity	140 orig, 270 orig, 270 orig	100 orig
Paper Weights	35 to 160 gsm, 35 to 220 gsm	35 to 163 gsm
Finisher	Opt finishers	Opt finishers
Tray/Stapling/Position(s)	500, 1,000, 4,000, 4,000/50, 50, 65, 100/3	500, 3,500, 2,500/50/3, 3, 4
SECURITY SPECS		
Network User Authentication	Yes	Yes
IP Address Filtering	Yes	Yes
MAC Address Filtering	Yes	No
HDD Overwrite	Std	Std
Max Overwrites	3	3
HDD Encryption	Std	Std
Secure Print	Yes	Yes
Encrypted Secure Print	Yes	Yes
Encrypted PDF Mode (Encrypted Scanning)	Yes	Std
IPsec	Yes	Yes
Secure Sockets Layer (SSL)	Yes	Yes
SNMPv3	Yes	Yes
Transport Layer Security	Yes	Yes
CONTROL PANEL	257 mm color touchscreen	Keypad and 254 mm color touchscreen
Quantity Selector	1 to 9,999 (0 to 9 touch keys)	1 to 999 (0 to 9 keypad)
Message Display	Yes	Yes
Help Key	Yes	Yes
ADDITIONAL INFORMATION		
Dimensions (HxWxD)	790 mm x 602 mm x 665 mm	909 mm x 615 mm x 697 mm
Weight	83 kg	95 kg
Power Requirements	220-240 V, 7.2 A	220-240 V, Amps not avail
Energy Used While Power Off	0.3W	0W
Energy Used in Power Save Mode	0.7W	3.6W
Energy Used in Ready Mode	50W	220W
Energy Used While Copying	740W	880W
Energy Used While Printing	740W	865W
Energy Used While Scanning	Info not avail	230W
Max Power Consumption	1750W	Info not avail
TEC Value	2.4KWh	3.7KWh
Dedicated Outlet	Recommended	Not required
Energy Star Compliant	Yes	Yes
Operating Noise Level	53.1 dB	57 dB

d-Copia 5001MF selling against Lexmark MX910de (Cont.)

	Olivetti d-COPIA 5001MF	Lexmark MX910de
MULTIFUNCTION MODES		
Copier	Std	Std
Internet Fax	Opt	No
Network Printer	Std	Std
Printer	Std	Std
Fax	Opt	Std
Network Fax	Opt	Opt
PC Fax	Opt	Std
Scanner	Std	Std
CONNECTIVITY SPECIFICATIONS		
Operating System Support	Win XP, Server 2003, Vista, Server 2008, 7, Server 2012, 8, 8.1, 10, Mac OS X 10.9+, Linux, UNIX	Win XP, Server 2003, Vista, Server 2008, 7, Server 2012, 8, Mac OS X 10.6-10.9, Linux, Novell Netware, UNIX
Parallel Interface	None	Opt
Serial Interface	None	Opt
USB Interface	Std 2.0, std 2.0 (host) x 4	Std 2.0, std 2.0 (host)
Network Interface	Std Ethernet, opt wireless	Std Ethernet, opt wireless
Interface Type	10/100/1000BaseTX, 802.11b/g/n	10/100/1000BaseTX, 802.11b/g/n
Mobile Print Support	Yes (Apple AirPrint, Olivetti Mobile Print, Wi-Fi Direct)	Yes (Apple AirPrint, Lexmark Mobile Print, Wi-Fi Direct)
Near Field Communication	Std	No
Embedded Software Platform or Extensible Solutions Interface	Java and Web Solutions (JAWS)	embedded solutions framework (eSF)
FACSIMILE SPECIFICATIONS		
Scanner Technology	CCD	CCD/CIS
Compression Method	MH/MR/MMR/JBIG	MH/MR/MMR/JBIG/JPEG
Modem Speed	33.6 Kbps	33.6 Kbps
Max TX Resolution	600 x 600 dpi	600 x 600 dpi
Gray Scale/Halftones	Info not avail	256 levels
Transfer Hub	Info not avail	No
DIALING CAPABILITIES		
Broadcasting (Groups/Dest)	Info not avail/500	64/400
Redial (Attempts/Intervals)	Info not avail	9/1 to 200 min
One Touch	1000	None
PRINTER SPECIFICATIONS		
Engine Mfr & Model	KYOCERA/TASKalfa 5003i	Konica Minolta/bizhub 554e
Compatibility	PC, Mac	PC, Mac
Speed	50 ppm	45 ppm
First-Page-Out Time	4.3 sec	5.6 sec
Max Print Area	312 x 442	315 x 452
Print from USB	Yes (JPEG, PDF, TIFF, XPS)	Yes (BMP, DCX, GIF, JPEG, PCX, PDF, PNG, TIFF, XPS)
Enhanced Resolution	9600 x 600 dpi	2400 x 600 dpi
Unenhanced Resolution	1200 x 1200 dpi	1200 x 1200 dpi
Std/Max Printer Memory	Shared	Shared
Controller Mfr/Model	KYOCERA/Info not avail	Lexmark/Info not avail
Processor/Bits/MHz	Freescale QorIQ T1024/Info not avail/1.2 GHz	Dual Core/32/800
SCANNER AND IMAGE MANAGEMENT SPECIFICATIONS		
Technology/Scan Speed	CCD/80 ipm color, 80 ipm black or 100 ipm color, 100 ipm black or 120 ipm color, 120 ipm black	CCD/CIS/80 ipm color, 80 ipm black
Max Resolution	600 x 600 dpi	600 x 600 dpi
TWAIN Compatible	Yes	Yes
Scan Destinations		
Cloud	Yes	INA
I-fax	Yes	No
FTP	Yes	Yes
SMB	Yes	Yes
HDD	Yes	Opt*
URL	No	Yes
USB	Yes	Yes

© 2019 Buyers Laboratory LLC

d-Copia 5001MF selling against Ricoh MP 5055ASP

	Olivetti d-COPIA 5001MF	Ricoh MP 5055ASP
Domestic Intro Date	February 2019	March 2017
OEM	KYOCERA (China)	Ricoh (Info not avail)
Also Sold As	KYOCERA TASKalfa 5003i;	None
TYPE	Monochrome copier, MF	Monochrome copier, MF
Configuration/Scanner	Desktop,digital	Desktop,digital
Technology	Laser	Laser
GENERAL SPECIFICATIONS/PAPER HANDLING		
First Copy Time	3.7 sec	2.9 sec
Multicopy (Ltr/Lgl/Ldgr)	50/25 cpm	50 cpm/Info not avail
Warm-up Time	17 sec	20 sec
Std Paper Source(s)	Dual drawer	Dual drawer
Std Paper Capacity	500/500 sheets	550/550 sheets
Paper Weights	52 to 300 gsm	60 to 300 gsm
Bypass/Paper Weights	150-sheet/52 to 300 gsm	100-sheet/52 to 300 gsm
Max Paper Sources	5	6
Max Paper Capacity	7,150 sheets	4,700 sheets
Max Original Size	A3	A3
Output Size (Min/Max)	A6/SRA3	A5/304.8 x 457.2
Copy Resolution	600 x 600 dpi	600 x 600 dpi
System Memory (Std/Max)	4-GB RAM, 8-GB and 320-GB HD/4-GB RAM, 8-GB and 320-GB HD	2-GB RAM, 320-GB HD/2-GB RAM, 320-GB HD
Document Feeder	Opt RADF, DSPF and DSPF	Std DSPF
Document Feeder Capacity	140 orig, 270 orig, 270 orig	220 orig
Paper Weights	35 to 160 gsm, 35 to 220 gsm	52 to 256 gsm
Finisher	Opt finishers	Opt finishers
Tray/Stapling/Position(s)	500, 1,000, 4,000, 4,000/50, 50, 65, 100/3	500, 1,250, 3,250, 1,250, 2,250/50/3, 3, 4, 3, 4
SECURITY SPECS		
Network User Authentication	Yes	Yes
IP Address Filtering	Yes	Yes
MAC Address Filtering	Yes	No
HDD Overwrite	Std	Std
Max Overwrites	3	9
HDD Encryption	Std	Std
Secure Print	Yes	Yes
Encrypted Secure Print	Yes	Yes
Encrypted PDF Mode (Encrypted Scanning)	Yes	Std
IPsec	Yes	Yes
Secure Sockets Layer (SSL)	Yes	Yes
SNMPv3	Yes	Yes
Transport Layer Security	Yes	Yes
CONTROL PANEL		
	257 mm color touchscreen	256.5 mm color touchscreen
Quantity Selector	1 to 9,999 (0 to 9 touch keys)	1 to 999 (0 to 9 touch keys)
Message Display	Yes	Yes
Help Key	Yes	No
ADDITIONAL INFORMATION		
Dimensions (HxWxD)	790 mm x 602 mm x 665 mm	963 mm x 587 mm x 684 mm
Weight	83 kg	62.5 kg
Power Requirements	220-240 V, 7.2 A	220-240 V, Amps not avail
Energy Used While Power Off	0.3W	Info not avail
Energy Used in Power Save Mode	0.7W	0.82W
Energy Used in Ready Mode	50W	48.8W
Energy Used While Copying	740W	Info not avail
Energy Used While Printing	740W	Info not avail
Energy Used While Scanning	Info not avail	Info not avail
Max Power Consumption	1750W	1780W
TEC Value	2.4KWh	2.3KWh
Dedicated Outlet	Recommended	Not required
Energy Star Compliant	Yes	Yes
Operating Noise Level	53.1 dB	70 dB

d-Copia 5001MF selling against Ricoh MP 5055ASP (Cont.)

	Olivetti d-COPIA 5001MF	Ricoh MP 5055ASP
MULTIFUNCTION MODES		
Copier	Std	Std
Internet Fax	Opt	Opt
Network Printer	Std	Std
Printer	Std	Std
Fax	Opt	Opt
Network Fax	Opt	Opt
PC Fax	Opt	Opt
Scanner	Std	Std
CONNECTIVITY SPECIFICATIONS		
Operating System Support	Win XP, Server 2003, Vista, Server 2008, 7, Server 2012, 8, 8.1, 10, Mac OS X 10.9+, Linux, UNIX	Win Vista, Server 2008, 7, Server 2012, 8, 8.1, 10, Mac OS X v10.7+, Linux, SAP, UNIX
Parallel Interface	None	Opt
Serial Interface	None	None
USB Interface	Std 2.0, std 2.0 (host) x 4	Std 2.0, std 2.0 (host) x 4
Network Interface	Std Ethernet, opt wireless	Std Ethernet, opt wireless
Interface Type	10/100/1000BaseTX, 802.11b/g/n	10/100/1000BaseTX, 802.11a/b/g/n, Bluetooth
Mobile Print Support	Yes (Apple AirPrint, Olivetti Mobile Print, Wi-Fi Direct)	Yes
Near Field Communication	Std	Std
Embedded Software Platform or Extensible Solutions Interface	Java and Web Solutions (JAWS)	Embedded Software Architecture
FACSIMILE SPECIFICATIONS		
Scanner Technology	CCD	CCD
Compression Method	MH/MR/MMR/JBIG	MH/MR/MMR/JBIG
Modem Speed	33.6 Kbps	33.6 Kbps
Max TX Resolution	600 x 600 dpi	200 x 200 dpi
Gray Scale/Halftones	Info not avail	256 levels
Transfer Hub	Info not avail	Yes
DIALING CAPABILITIES		
Broadcasting (Groups/Dest)	Info not avail/500	100/500
Redial (Attempts/Intervals)	Info not avail	Info not avail
One Touch	1000	None
PRINTER SPECIFICATIONS		
Engine Mfr & Model	KYOCERA/TASKalfa 5003i	Ricoh/MP 5055
Compatibility	PC, Mac	PC, Mac
Speed	50 ppm	50 ppm
First-Page-Out Time	4.3 sec	2.9 sec
Max Print Area	312 x 442	304.8 x 457.2
Print from USB	Yes (JPEG, PDF, TIFF, XPS)	Yes
Enhanced Resolution	9600 x 600 dpi	Not applicable
Unenhanced Resolution	1200 x 1200 dpi	1200 x 1200 dpi
Std/Max Printer Memory	Shared	Shared
Controller Mfr/Model	KYOCERA/Info not avail	Ricoh/Next Generation Architecture
Processor/Bits/MHz	Freescale QorIQ T1024/Info not avail/1.2 GHz	Intel Atom Processor Bay Trail/Info not avail/1.46 GHz
SCANNER AND IMAGE MANAGEMENT SPECIFICATIONS		
Technology/Scan Speed	CCD/80 ipm color, 80 ipm black or 100 ipm color, 100 ipm black or 120 ipm color, 120 ipm black	CCD/110 ipm color, 110 ipm black
Max Resolution	600 x 600 dpi	1200 x 1200 dpi
TWAIN Compatible	Yes	Yes
Scan Destinations		
Cloud	Yes	Yes
I-fax	Yes	Yes
FTP	Yes	Yes
SMB	Yes	Yes
HDD	Yes	Yes
URL	No	Yes
USB	Yes	Yes

© 2019 Buyers Laboratory LLC

d-Copia 5001MF selling against Samsung MultiExpress K7500GX

	Olivetti d-COPIA 5001MF	Samsung MultiXpress K7500GX
Domestic Intro Date	February 2019	May 2015
OEM	KYOCERA (China)	Samsung (China)
Also Sold As	KYOCERA TASKalfa 5003i;	None
TYPE	Monochrome copier, MF	Monochrome copier, MF
Configuration/Scanner	Desktop,digital	Desktop,digital
Technology	Laser	Laser
GENERAL SPECIFICATIONS/PAPER HANDLING		
First Copy Time	3.7 sec	3.7 sec
Multicopy (Ltr/Lgl/Ldgr)	50/25 cpm	50/Info not avail
Warm-up Time	17 sec	12 sec
Std Paper Source(s)	Dual drawer	Dual drawer
Std Paper Capacity	500/500 sheets	520/520 sheets
Paper Weights	52 to 300 gsm	60 to 320 gsm
Bypass/Paper Weights	150-sheet/52 to 300 gsm	100-sheet/60 to 320 gsm
Max Paper Sources	5	6
Max Paper Capacity	7,150 sheets	6,140 sheets
Max Original Size	A3	320 x 457
Output Size (Min/Max)	A6/SRA3	98 x 152/320 x 457
Copy Resolution	600 x 600 dpi	600 x 600 dpi
System Memory (Std/Max)	4-GB RAM, 8-GB and 320-GB HD/4-GB RAM, 8-GB and 320-GB HD	4-GB RAM, 320-GB HD/4-GB RAM, 320-GB HD
Document Feeder	Opt RADF, DSPF and DSPF	Std DSPF
Document Feeder Capacity	140 orig, 270 orig, 270 orig	250 orig
Paper Weights	35 to 160 gsm, 35 to 220 gsm	42 to 163 gsm
Finisher	Opt finishers	Opt finishers
Tray/Stapling/Position(s)	500, 1,000, 4,000, 4,000/50, 50, 65, 100/3	550, 2,250, 3,250/50, 65, 65/Info not avail
SECURITY SPECS		
Network User Authentication	Yes	Yes
IP Address Filtering	Yes	Yes
MAC Address Filtering	Yes	Yes
HDD Overwrite	Std	Std
Max Overwrites	3	9
HDD Encryption	Std	Std
Secure Print	Yes	Yes
Encrypted Secure Print	Yes	Yes
Encrypted PDF Mode (Encrypted Scanning)	Yes	Yes
IPsec	Yes	Yes
Secure Sockets Layer (SSL)	Yes	Yes
SNMPv3	Yes	Yes
Transport Layer Security	Yes	Yes
CONTROL PANEL	257 mm color touchscreen	256.5 mm color touchscreen
Quantity Selector	1 to 9,999 (0 to 9 touch keys)	1 to 9,999 (0 to 9 touch keys)
Message Display	Yes	Yes
Help Key	Yes	Yes
ADDITIONAL INFORMATION		
Dimensions (HxWxD)	790 mm x 602 mm x 665 mm	932 mm x 585 mm x 670 mm
Weight	83 kg	97.3 kg
Power Requirements	220-240 V, 7.2 A	220-240 V, Amps not avail
Energy Used While Power Off	0.3W	0W
Energy Used in Power Save Mode	0.7W	2W
Energy Used in Ready Mode	50W	60W
Energy Used While Copying	740W	900W
Energy Used While Printing	740W	900W
Energy Used While Scanning	Info not avail	Info not avail
Max Power Consumption	1750W	1300W
TEC Value	2.4KWh	2.717KWh
Dedicated Outlet	Recommended	Recommended
Energy Star Compliant	Yes	Yes
Operating Noise Level	53.1 dB	57 dB

d-Copia 5001MF selling against Samsung MultiExpress K7500GX (Cont.)

	Olivetti d-COPIA 5001MF	Samsung MultiXpress K7500GX
MULTIFUNCTION MODES		
Copier	Std	Std
Internet Fax	Opt	Std
Network Printer	Std	Std
Printer	Std	Std
Fax	Opt	Opt
Network Fax	Opt	Opt
PC Fax	Opt	INA
Scanner	Std	Std
CONNECTIVITY SPECIFICATIONS		
Operating System Support	Win XP, Server 2003, Vista, Server 2008, 7, Server 2012, 8, 8.1, 10, Mac OS X 10.9+, Linux, UNIX	Win XP, Server 2003, Vista, Server 2008, 7, Server 2012, 8, 8.1, Mac OS 10.6-10.10, Linux, UNIX
Parallel Interface	None	None
Serial Interface	None	None
USB Interface	Std 2.0, std 2.0 (host) x 4	Std 2.0, std 3.0 (host)
Network Interface	Std Ethernet, opt wireless	Std Ethernet, opt wireless
Interface Type	10/100/1000BaseTX, 802.11b/g/n	10/100/1000BaseTX, 802.11b/g/n
Mobile Print Support	Yes (Apple AirPrint, Olivetti Mobile Print, Wi-Fi Direct)	Yes (Apple AirPrint, Google Cloud Print, Mopria, PrinterOn Cloud Print, Samsung Cloud Print, Samsung Mobile Print)
Near Field Communication	Std	Opt
Embedded Software Platform or Extensible Solutions Interface	Java and Web Solutions (JAWS)	eXtensible Open Architecture (XOA)
FACSIMILE SPECIFICATIONS		
Scanner Technology	CCD	CCD
Compression Method	MH/MR/MMR/JBIG	MH/MR/MMR/JBIG
Modem Speed	33.6 Kbps	33.6 Kbps
Max TX Resolution	600 x 600 dpi	600 x 600 dpi
Gray Scale/Halftones	Info not avail	256 levels
Transfer Hub	Info not avail	Info not avail
DIALING CAPABILITIES		
Broadcasting (Groups/Dest)	Info not avail/500	Info not avail
Redial (Attempts/Intervals)	Info not avail	Info not avail
One Touch	1000	Info not avail
PRINTER SPECIFICATIONS		
Engine Mfr & Model	KYOCERA/TASKalfa 5003i	Samsung/K7500GX
Compatibility	PC, Mac	PC, Mac
Speed	50 ppm	50 ppm
First-Page-Out Time	4.3 sec	7.5 sec
Max Print Area	312 x 442	Info not avail
Print from USB	Yes (JPEG, PDF, TIFF, XPS)	Yes (JPEG, PDF, TIFF, XPS)
Enhanced Resolution	9600 x 600 dpi	9600 x 600 dpi
Unenhanced Resolution	1200 x 1200 dpi	1200 x 1200 dpi
Std/Max Printer Memory	Shared	Shared
Controller Mfr/Model	KYOCERA/Info not avail	Samsung/Info not avail
Processor/Bits/MHz	Freescale QorIQ T1024/Info not avail/1.2 GHz	Quad Core/Info not avail/1.5 GHz
SCANNER AND IMAGE MANAGEMENT SPECIFICATIONS		
Technology/Scan Speed	CCD/80 ipm color, 80 ipm black or 100 ipm color, 100 ipm black or 120 ipm color, 120 ipm black	CCD/120 ipm color, 120 ipm black
Max Resolution	600 x 600 dpi	600 x 600 dpi
TWAIN Compatible	Yes	Yes
Scan Destinations		
Cloud	Yes	INA
I-fax	Yes	INA
FTP	Yes	Yes
SMB	Yes	Yes
HDD	Yes	Yes
URL	No	INA
USB	Yes	Yes

© 2019 Buyers Laboratory LLC

d-Copia 5001MF selling against Toshiba e-STUDIO5018A

	Olivetti d-COPIA 5001MF	Toshiba e-STUDIO5018A
Domestic Intro Date	February 2019	September 2018
OEM	KYOCERA (China)	Toshiba (China)
Also Sold As	KYOCERA TASKalfa 5003i;	None
TYPE	Monochrome copier, MF	Monochrome copier, MF
Configuration/Scanner	Desktop,digital	Desktop,digital
Technology	Laser	Laser
GENERAL SPECIFICATIONS/PAPER HANDLING		
First Copy Time	3.7 sec	3.6 sec
Multicopy (Ltr/Lgl/Ldgr)	50/25 cpm	50/Info not avail/25 cpm
Warm-up Time	17 sec	16 sec
Std Paper Source(s)	Dual drawer	Dual drawer
Std Paper Capacity	500/500 sheets	550/550 sheets
Paper Weights	52 to 300 gsm	60 to 256 gsm
Bypass/Paper Weights	150-sheet/52 to 300 gsm	100-sheet/52 to 256 gsm
Max Paper Sources	5	5
Max Paper Capacity	7,150 sheets	3,200 sheets
Max Original Size	A3	A3
Output Size (Min/Max)	A6/SRA3	100 x 148/A3
Copy Resolution	600 x 600 dpi	600 x 600 dpi
System Memory (Std/Max)	4-GB RAM, 8-GB and 320-GB HD/4-GB RAM, 8-GB and 320-GB HD	4-GB RAM, 320-GB HD/4-GB RAM, 320-GB HD
Document Feeder	Opt RADF, DSPF and DSPF	Opt RADF and DSPF
Document Feeder Capacity	140 orig, 270 orig, 270 orig	100 orig, 300 orig
Paper Weights	35 to 160 gsm, 35 to 220 gsm	35 to 157 gsm, 35 to 209 gsm
Finisher	Opt finishers	Opt finishers
Tray/Stapling/Position(s)	500, 1,000, 4,000, 4,000/50, 50, 65, 100/3	600, 2,250, 3,250/50/3
SECURITY SPECS		
Network User Authentication	Yes	Yes
IP Address Filtering	Yes	Yes
MAC Address Filtering	Yes	Yes
HDD Overwrite	Std	Opt
Max Overwrites	3	5
HDD Encryption	Std	Std
Secure Print	Yes	Yes
Encrypted Secure Print	Yes	Yes
Encrypted PDF Mode (Encrypted Scanning)	Yes	Std
IPsec	Yes	Opt
Secure Sockets Layer (SSL)	Yes	Yes
SNMPv3	Yes	Yes
Transport Layer Security	Yes	Yes
CONTROL PANEL	257 mm color touchscreen	256.5 mm color touchscreen
Quantity Selector	1 to 9,999 (0 to 9 touch keys)	1 to 999 (0 to 9 touch keys)
Message Display	Yes	Yes
Help Key	Yes	Yes
ADDITIONAL INFORMATION		
Dimensions (HxWxD)	790 mm x 602 mm x 665 mm	787 mm x 585 mm x 586 mm
Weight	83 kg	58 kg
Power Requirements	220-240 V, 7.2 A	220-240 V, Amps not avail
Energy Used While Power Off	0.3W	Info not avail
Energy Used in Power Save Mode	0.7W	Info not avail
Energy Used in Ready Mode	50W	Info not avail
Energy Used While Copying	740W	Info not avail
Energy Used While Printing	740W	Info not avail
Energy Used While Scanning	Info not avail	Info not avail
Max Power Consumption	1750W	Info not avail
TEC Value	2.4KWh	Info not avail
Dedicated Outlet	Recommended	Recommended
Energy Star Compliant	Yes	Yes
Operating Noise Level	53.1 dB	Info not avail

d-Copia 5001MF selling against Toshiba e-STUDIO5018A (Cont.)

	Olivetti d-COPIA 5001MF	Toshiba e-STUDIO5018A
MULTIFUNCTION MODES		
Copier	Std	Std
Internet Fax	Opt	Std
Network Printer	Std	Std
Printer	Std	Std
Fax	Opt	Opt
Network Fax	Opt	Opt
PC Fax	Opt	Opt
Scanner	Std	Std
CONNECTIVITY SPECIFICATIONS		
Operating System Support	Win XP, Server 2003, Vista, Server 2008, 7, Server 2012, 8, 8.1, 10, Mac OS X 10.9+, Linux, UNIX	Win Server 2008, 7, Server 2012, 8.1, 10, Server 2016, Mac OS X 10.6.8-10.13, Citrix, Linux, Novell, UNIX
Parallel Interface	None	None
Serial Interface	None	None
USB Interface	Std 2.0, std 2.0 (host) x 4	Std 2.0, std 2.0 (host)
Network Interface	Std Ethernet, opt wireless	Std Ethernet, opt wireless
Interface Type	10/100/1000BaseTX, 802.11b/g/n	10/100/1000BaseTX, 802.11b/g/n, Bluetooth
Mobile Print Support	Yes (Apple AirPrint, Olivetti Mobile Print, Wi-Fi Direct)	Yes (Apple AirPrint, e-BRIDGE Print & Capture, Google Cloud Print, Mopria Print Service, Wi-Fi Direct)
Near Field Communication	Std	Opt
Embedded Software Platform or Extensible Solutions Interface	Java and Web Solutions (JAWS)	Elevate
FACSIMILE SPECIFICATIONS		
Scanner Technology	CCD	CCD
Compression Method	MH/MR/MMR/JBIG	MH/MR/MMR/JBIG
Modem Speed	33.6 Kbps	33.6 Kbps
Max TX Resolution	600 x 600 dpi	406 x 392 lpi
Gray Scale/Halftones	Info not avail	256 levels
Transfer Hub	Info not avail	Yes
DIALING CAPABILITIES		
Broadcasting (Groups/Dest)	Info not avail/500	200/400
Redial (Attempts/Intervals)	Info not avail	14/Programmable
One Touch	1000	Not applicable
PRINTER SPECIFICATIONS		
Engine Mfr & Model	KYOCERA/TASKalfa 5003i	Toshiba/e-STUDIO5018A
Compatibility	PC, Mac	PC, Mac
Speed	50 ppm	50 ppm
First-Page-Out Time	4.3 sec	Info not avail
Max Print Area	312 x 442	Info not avail
Print from USB	Yes (JPEG, PDF, TIFF, XPS)	Yes (JPEG, PDF, XPS)
Enhanced Resolution	9600 x 600 dpi	3600 x 1200 dpi
Unenhanced Resolution	1200 x 1200 dpi	600 x 600 dpi
Std/Max Printer Memory	Shared	Shared
Controller Mfr/Model	KYOCERA/Info not avail	Toshiba/e-BRIDGE Next
Processor/Bits/MHz	Freescale QorIQ T1024/Info not avail/1.2 GHz	Intel Atom E3825 Dual Core/Info not avail/1.33 GHz
SCANNER AND IMAGE MANAGEMENT SPECIFICATIONS		
Technology/Scan Speed	CCD/80 ipm color, 80 ipm black or 100 ipm color, 100 ipm black or 120 ipm color, 120 ipm black	CCD/73 ipm color, 73 ipm black or 120 ipm color, 120 ipm black
Max Resolution	600 x 600 dpi	600 x 600 dpi
TWAIN Compatible	Yes	Yes
Scan Destinations		
Cloud	Yes	Yes
I-fax	Yes	Yes
FTP	Yes	Yes
SMB	Yes	Yes
HDD	Yes	Yes
URL	No	INA
USB	Yes	Yes

© 2019 Buyers Laboratory LLC

d-Copia 5001MF selling against Xerox AltaLink B8045

	Olivetti d-COPIA 5001MF	Xerox AltaLink B8045
Domestic Intro Date	February 2019	May 2017
OEM	KYOCERA (China)	Fuji Xerox and Xerox (Malaysia/Singapore)
Also Sold As	KYOCERA TASKalfa 5003i;	None
TYPE	Monochrome copier, MF	Monochrome copier, MF
Configuration/Scanner	Desktop,digital	Console,digital
Technology	Laser	LED
GENERAL SPECIFICATIONS/PAPER HANDLING		
First Copy Time	3.7 sec	3.8 sec
Multicopy (Ltr/Lgl/Ldgr)	50/25 cpm	45/31 cpm
Warm-up Time	17 sec	120 sec
Std Paper Source(s)	Dual drawer	Four tray
Std Paper Capacity	500/500 sheets	500/500/1,600/2,000 sheets
Paper Weights	52 to 300 gsm	60 to 200 gsm
Bypass/Paper Weights	150-sheet/52 to 300 gsm	100-sheet/60 to 216 gsm
Max Paper Sources	5	6
Max Paper Capacity	7,150 sheets	8,000 sheets
Max Original Size	A3	A3
Output Size (Min/Max)	A6/SRA3	A6/A3
Copy Resolution	600 x 600 dpi	600 x 600 dpi
System Memory (Std/Max)	4-GB RAM, 8-GB and 320-GB HD/4-GB RAM, 8-GB and 320-GB HD	4-GB RAM, 250-GB HD/4-GB RAM, 250-GB HD
Document Feeder	Opt RADF, DSPF and DSPF	Std DSPF
Document Feeder Capacity	140 orig, 270 orig, 270 orig	200 orig
Paper Weights	35 to 160 gsm, 35 to 220 gsm	50 to 160 gsm
Finisher	Opt finishers	Opt finishers
Tray/Stapling/Position(s)	500, 1,000, 4,000, 4,000/50, 50, 65, 100/3	2,250/50/3
SECURITY SPECS		
Network User Authentication	Yes	Yes
IP Address Filtering	Yes	Yes
MAC Address Filtering	Yes	Info not avail
HDD Overwrite	Std	Std
Max Overwrites	3	3
HDD Encryption	Std	Std
Secure Print	Yes	Yes
Encrypted Secure Print	Yes	Yes
Encrypted PDF Mode (Encrypted Scanning)	Yes	Yes
IPsec	Yes	Yes
Secure Sockets Layer (SSL)	Yes	Yes
SNMPv3	Yes	Yes
Transport Layer Security	Yes	Yes
CONTROL PANEL		
Quantity Selector	1 to 9,999 (0 to 9 touch keys)	1 to 9,999 (0 to 9 touch keys)
Message Display	Yes	Yes
Help Key	Yes	Yes
ADDITIONAL INFORMATION		
Dimensions (HxWxD)	790 mm x 602 mm x 665 mm	1,150 mm x 850 mm x 665 mm
Weight	83 kg	113 kg
Power Requirements	220-240 V, 7.2 A	220-240 V, 16 A
Energy Used While Power Off	0.3W	Info not avail
Energy Used in Power Save Mode	0.7W	4W
Energy Used in Ready Mode	50W	45W
Energy Used While Copying	740W	1150W
Energy Used While Printing	740W	1150W
Energy Used While Scanning	Info not avail	Info not avail
Max Power Consumption	1750W	Info not avail
TEC Value	2.4KWh	Info not avail
Dedicated Outlet	Recommended	Required
Energy Star Compliant	Yes	Yes
Operating Noise Level	53.1 dB	56 dB

d-Copia 5001MF selling against Xerox AltaLink B8045 (Cont.)

	Olivetti d-COPIA 5001MF	Xerox AltaLink B8045
MULTIFUNCTION MODES		
Copier	Std	Std
Internet Fax	Opt	Std
Network Printer	Std	Std
Printer	Std	Std
Fax	Opt	Opt
Network Fax	Opt	Std
PC Fax	Opt	No
Scanner	Std	Std
CONNECTIVITY SPECIFICATIONS		
Operating System Support	Win XP, Server 2003, Vista, Server 2008, 7, Server 2012, 8, 8.1, 10, Mac OS X 10.9+, Linux, UNIX	Win XP, Server 2003, Vista, Server 2008, 7, Server 2012, 8, 8.1, 10, Mac OS 10.8-10.11, Citrix, Linux, Novell, UNIX
Parallel Interface	None	None
Serial Interface	None	None
USB Interface	Std 2.0, std 2.0 (host) x 4	Std 2.0, std 2.0 (host)
Network Interface	Std Ethernet, opt wireless	Std Ethernet, opt wireless
Interface Type	10/100/1000BaseTX, 802.11b/g/n	10/100/1000BaseTX, 802.11b/g/n
Mobile Print Support	Yes (Apple AirPrint, Olivetti Mobile Print, Wi-Fi Direct)	Yes (Apple AirPrint, @PrintByXerox, Google Cloud Print, Mopria Print Service, Xerox Mobile Link App, Xerox Mobile Print, Xerox Mobile Print Cloud, Xerox Print Management and Mobility Suite, Xerox Print Service Plug-in, Wi-Fi Direct)
Near Field Communication	Std	Std
Embedded Software Platform or Extensible Solutions Interface	Java and Web Solutions (JAWS)	Extensible Interface Platform (EIP)
FACSIMILE SPECIFICATIONS		
Scanner Technology	CCD	CCD
Compression Method	MH/MR/MMR/JBIG	MH/MMR
Modem Speed	33.6 Kbps	33.6 Kbps
Max TX Resolution	600 x 600 dpi	600 x 600 dpi
Gray Scale/Halftones	Info not avail	256 levels
Transfer Hub	Info not avail	No
DIALING CAPABILITIES		
Broadcasting (Groups/Dest)	Info not avail/500	Info not avail
Redial (Attempts/Intervals)	Info not avail	14/1 to 25 min
One Touch	1000	Info not avail
PRINTER SPECIFICATIONS		
Engine Mfr & Model	KYOCERA/TASKalfa 5003i	Fuji Xerox and Xerox/AltaLink B8045
Compatibility	PC, Mac	PC, Mac
Speed	50 ppm	45 ppm
First-Page-Out Time	4.3 sec	3.9 sec
Max Print Area	312 x 442	Info not avail
Print from USB	Yes (JPEG, PDF, TIFF, XPS)	Yes (PCL, PDF, JPEG, PS, TIFF, XPS)
Enhanced Resolution	9600 x 600 dpi	Info not avail
Unenhanced Resolution	1200 x 1200 dpi	1200 x 1200 dpi
Std/Max Printer Memory	Shared	Shared
Controller Mfr/Model	KYOCERA/Info not avail	Xerox/ConnectKey
Processor/Bits/MHz	Freescale QorIQ T1024/Info not avail/1.2 GHz	Quad-core/Info not avail/1.8 GHz
SCANNER AND IMAGE MANAGEMENT SPECIFICATIONS		
Technology/Scan Speed	CCD/80 ipm color, 80 ipm black or 100 ipm color, 100 ipm black or 120 ipm color, 120 ipm black	CCD/140 ipm color, 140 ipm black
Max Resolution	600 x 600 dpi	600 x 600 dpi
TWAIN Compatible	Yes	Yes
Scan Destinations		
Cloud	Yes	Yes
I-fax	Yes	Yes
FTP	Yes	Yes
SMB	Yes	Yes
HDD	Yes	Yes
URL	No	Yes
USB	Yes	Yes

14. Competition to the Olivetti d-Copia 6001MF

The main characteristics of the new d-Copia 6001MF are compared with those of relevant competitors' models in the tables that follow.

Each table compares our models with a competitor model with the same, or the closest speed for copying/printing.

- Canon ImageRUNNER ADVANCE 6555i III
- Konica-Minolta Bizhub 558e
- Lexmark MX911de
- Ricoh 6055SP
- Samsung MultiExpress K7600LX
- Sharp MX-M6050
- Toshiba e-STUDIO5018A
- Xerox AltaLink B8055

d-Copia 6001MF selling against Canon ImageRUNNER ADVANCE 6555i III

	Olivetti d-COPIA 6001MF	Canon imageRUNNER ADVANCE 6555i III
OEM	KYOCERA (China)	Canon (China)
Also Sold As	KYOCERA TASKalfa 6003i	None
TYPE	Monochrome copier, MF	Monochrome copier, MF
Configuration/Scanner	Desktop,digital	Console,digital
Technology	Laser	Laser
GENERAL SPECIFICATIONS/PAPER HANDLING		
First Copy Time	3.4 sec	3.3 sec
Multicopy (Ltr/Lgl/Ldgr)	60/30 cpm	55/32 cpm
Warm-up Time	17 sec	30 sec
Std Paper Source(s)	Dual drawer	Dual drawer, dual tray
Std Paper Capacity	500/500 sheets	550/550/1,500/1,500 sheets
Paper Weights	52 to 300 gsm	52 to 220 gsm
Bypass/Paper Weights	150-sheet/52 to 300 gsm	100-sheet/52 to 256 gsm
Max Paper Sources	5	6
Max Paper Capacity	7,150 sheets	7,700 sheets
Max Original Size	A3	297 x 431.8
Output Size (Min/Max)	A6/SRA3	100 x 148/297 x 487.7
Copy Resolution	600 x 600 dpi	600 x 600 dpi
System Memory (Std/Max)	4-GB RAM, 8-GB and 320-GB HD/4-GB RAM, 8-GB and 320-GB HD	3-GB RAM, 250-GB HD/3-GB RAM, 1-TB HD
Document Feeder	Opt RADF, DSPF and DSPF	Std DSPF
Document Feeder Capacity	140 orig, 270 orig, 270 orig	300 orig
Paper Weights	35 to 160 gsm, 35 to 220 gsm	38 to 220 gsm
Finisher	Opt finishers	Opt finishers
Tray/Stapling/Position(s)	500, 1,000, 4,000, 4,000/50, 50, 65, 100/3	3,500/65/3
SECURITY SPECS		
Network User Authentication	Yes	Yes
IP Address Filtering	Yes	Yes
MAC Address Filtering	Yes	Yes
HDD Overwrite	Std	Std
Max Overwrites	3	9
HDD Encryption	Std	Std
Secure Print	Yes	Yes
Encrypted Secure Print	Yes	Yes
Encrypted PDF Mode (Encrypted Scanning)	Yes	Yes
IPsec	Yes	Yes
Secure Sockets Layer (SSL)	Yes	Yes
SNMPv3	Yes	Yes
Transport Layer Security	Yes	Yes
CONTROL PANEL		
	257 mm color touchscreen	Keypad and 256 mm color touchscreen
Quantity Selector	1 to 9,999 (0 to 9 touch keys)	1 to 9,999 (0 to 9 keypad)
Message Display	Yes	Yes
Help Key	Yes	Yes
ADDITIONAL INFORMATION		
Dimensions (HxWxD)	790 mm x 602 mm x 665 mm	1,220 mm x 670 mm x 779 mm
Weight	83 kg	234 kg
Power Requirements	220-240 V, 7.2 A	220-240 V, 10 A
Energy Used While Power Off	0.3W	0.3W
Energy Used in Power Save Mode	0.7W	0.9W
Energy Used in Ready Mode	50W	260.4W
Energy Used While Copying	870W	Info not avail
Energy Used While Printing	870W	1397.9W
Energy Used While Scanning	Info not avail	Info not avail
Max Power Consumption	1750W	2400W
TEC Value	3KWh	Info not avail
Dedicated Outlet	Recommended	Recommended
Energy Star Compliant	Yes	Yes
Operating Noise Level	54.9 dB	54 dB

d-Copia 6001MF selling against Canon ImageRUNNER ADVANCE 6555i III (Cont.)

	Olivetti d-COPIA 6001MF	Canon imageRUNNER ADVANCE 6555i III
MULTIFUNCTION MODES		
Copier	Std	Std
Internet Fax	Opt	Std
Network Printer	Std	Std
Printer	Std	Std
Fax	Opt	Opt
Network Fax	Opt	Opt
PC Fax	Opt	Opt
Scanner	Std	Std
CONNECTIVITY SPECIFICATIONS		
Operating System Support	Win XP, Server 2003, Vista, Server 2008, 7, Server 2012, 8, 8.1, 10, Mac OS X 10.9+, Linux, UNIX	Win Server 2008, 7, Server 2012, 8.1, 10, Server 2016, Mac OS X 10.7+, Citrix, Linux, UNIX
Parallel Interface	None	None
Serial Interface	None	Opt
USB Interface	Std 2.0, std 2.0 (host) x 4	Std 2.0, std 2.0 (host) x 2, std 3.0 (host)
Network Interface	Std Ethernet, opt wireless	Std Ethernet, std wireless, opt wireless
Interface Type	10/100/1000BaseTX, 802.11b/g/n	10/100/1000BaseTX, 802.11b/g/n, Bluetooth
Mobile Print Support	Yes (Apple AirPrint, Olivetti Mobile Print, Wi-Fi Direct)	Yes (Apple AirPrint, Canon Business Print, Google Cloud Print, Mopria Print Service, UniFLOW Online)
Near Field Communication	Std	Opt
Embedded Software Platform or Extensible Solutions Interface	Java and Web Solutions (JAWS)	Multifunctional Embedded Application Platform (MEAP)
FACSIMILE SPECIFICATIONS		
Scanner Technology	CCD	Proprietary image sensor
Compression Method	MH/MR/MMR/JBIG	MH/MR/MMR/JBIG
Modem Speed	33.6 Kbps	33.6 Kbps
Max TX Resolution	600 x 600 dpi	400 x 400 dpi
Gray Scale/Halftones	Info not avail	256 levels
Transfer Hub	Info not avail	Yes
DIALING CAPABILITIES		
Broadcasting (Groups/Dest)	Info not avail/500	199/256
Redial (Attempts/Intervals)	Info not avail	10/2 to 99 min
One Touch	1000	Info not avail
PRINTER SPECIFICATIONS		
Engine Mfr & Model	KYOCERA/TASKalfa 6003i	Canon/imageRUNNER ADVANCE 6555i III
Compatibility	PC, Mac	PC, Mac
Speed	60 ppm	55 ppm
First-Page-Out Time	3.8 sec	Info not avail
Max Print Area	312 x 442	Info not avail
Print from USB	Yes (JPEG, PDF, TIFF, XPS)	Yes (ESP, JPEG, PDF, TIFF, XPS)
Enhanced Resolution	9600 x 600 dpi	Not applicable
Unenhanced Resolution	1200 x 1200 dpi	1200 x 1200 dpi
Std/Max Printer Memory	Shared	Shared
Controller Mfr/Model	KYOCERA/Info not avail	Canon/Info not avail
Processor/Bits/MHz	Freescale QorIQ T1024/Info not avail/1.2 GHz	Canon dual custom processor/Info not avail/1.75 GHz
SCANNER AND IMAGE MANAGEMENT SPECIFICATIONS		
Technology/Scan Speed	CCD/80 ipm color, 80 ipm black or 100 ipm color, 100 ipm black or 120 ipm color, 120 ipm black	Proprietary image sensor/120 ipm color, 120 ipm black
Max Resolution	600 x 600 dpi	600 x 600 dpi
TWAIN Compatible	Yes	Yes
Scan Destinations:		
Cloud	Yes	Yes
H-fax	Yes	Yes
FTP	Yes	Yes
SMB	Yes	Yes
HDD	Yes	Yes
URL	No	Yes
USB	Yes	Yes

© 2019 Buyers Laboratory LLC

d-Copia 6001MF selling against Konica-Minolta Bizhub 558e

	Olivetti d-COPIA 6001MF	Konica Minolta bizhub 558e
OEM	KYOCERA (China)	Konica Minolta (China)
Also Sold As	KYOCERA TASKalfa 6003i	DEVELOP ineo 558e
TYPE	Monochrome copier, MF	Monochrome copier, MF
Configuration/Scanner	Desktop,digital	Desktop,digital
Technology	Laser	Laser
GENERAL SPECIFICATIONS/PAPER HANDLING		
First Copy Time	3.4 sec	3.5 sec
Multicopy (Ltr/Lgl/Ldgr)	60/30 cpm	55/27 cpm
Warm-up Time	17 sec	22 sec
Std Paper Source(s)	Dual drawer	Dual drawer
Std Paper Capacity	500/500 sheets	500/500 sheets
Paper Weights	52 to 300 gsm	52 to 256 gsm
Bypass/Paper Weights	150-sheet/52 to 300 gsm	150-sheet/60 to 300 gsm
Max Paper Sources	5	5
Max Paper Capacity	7,150 sheets	6,650 sheets
Max Original Size	A3	A3
Output Size (Min/Max)	A6/SRA3	A6/SRA3
Copy Resolution	600 x 600 dpi	600 x 600 dpi
System Memory (Std/Max)	4-GB RAM, 8-GB and 320-GB HD/4-GB RAM, 8-GB and 320-GB HD	4-GB RAM, 250-GB HD/4-GB RAM, 250-GB HD
Document Feeder	Opt RADF, DSPF and DSPF	Std DSPF
Document Feeder Capacity	140 orig, 270 orig, 270 orig	300 orig
Paper Weights	35 to 160 gsm, 35 to 220 gsm	35 to 210 gsm
Finisher	Opt finishers	Opt finishers
Tray/Stapling/Position(s)	500, 1,000, 4,000, 4,000/50, 50, 65, 100/3	500, 3,200, 3,200, 2,700, 2,700/50, 100, 100, 50, 100/3
SECURITY SPECS		
Network User Authentication	Yes	Yes
IP Address Filtering	Yes	Yes
MAC Address Filtering	Yes	Yes*
HDD Overwrite	Std	Std
Max Overwrites	3	8
HDD Encryption	Std	Std
Secure Print	Yes	Yes
Encrypted Secure Print	Yes	Opt
Encrypted PDF Mode (Encrypted Scanning)	Yes	Std
IPsec	Yes	Yes
Secure Sockets Layer (SSL)	Yes	Yes
SNMPv3	Yes	Yes
Transport Layer Security	Yes	Yes
CONTROL PANEL		
Quantity Selector	1 to 9,999 (0 to 9 touch keys)	1 to 9,999 (0 to 9 touch keys)
Message Display	Yes	Yes
Help Key	Yes	Yes
ADDITIONAL INFORMATION		
Dimensions (HxWxD)	790 mm x 602 mm x 665 mm	961 mm x 615 mm x 755 mm
Weight	83 kg	96 kg
Power Requirements	220-240 V, 7.2 A	220-240 V, 9 A
Energy Used While Power Off	0.3W	Info not avail
Energy Used in Power Save Mode	0.7W	Info not avail
Energy Used in Ready Mode	50W	Info not avail
Energy Used While Copying	870W	Info not avail
Energy Used While Printing	870W	Info not avail
Energy Used While Scanning	Info not avail	Info not avail
Max Power Consumption	1750W	2000W
TEC Value	3KWh	Info not avail
Dedicated Outlet	Recommended	Recommended
Energy Star Compliant	Yes	Yes
Operating Noise Level	54.9 dB	70.8 dB

d-Copia 6001MF selling against Konica-Minolta Bizhub 558e (Cont.)

	Olivetti d-COPIA 6001MF	Konica Minolta bizhub 558e
MULTIFUNCTION MODES		
Copier	Std	Std
Internet Fax	Opt	Std
Network Printer	Std	Std
Printer	Std	Std
Fax	Opt	Opt
Network Fax	Opt	Opt
PC Fax	Opt	Opt
Scanner	Std	Std
CONNECTIVITY SPECIFICATIONS		
Operating System Support	Win XP, Server 2003, Vista, Server 2008, 7, Server 2012, 8, 8.1, 10, Mac OS X 10.9+, Linux, UNIX	Win Server 2008, 7, Server 2012, 8, 8.1, 10, Server 2016, Mac OS X 10.8+, Citrix, Linux, Unix
Parallel Interface	None	None
Serial Interface	None	None
USB Interface	Std 2.0, std 2.0 (host) x 4	Std 2.0, std (host)
Network Interface	Std Ethernet, opt wireless	Std Ethernet, opt wireless
Interface Type	10/100/1000BaseTX, 802.11b/g/n	10/100/1000BaseTX, 802.11b/g/n
Mobile Print Support	Yes (Apple AirPrint, Olivetti Mobile Print, Wi-Fi Direct)	Yes (Apple AirPrint, Google Cloud Print, Konica Minolta Mobile Print, Mopria Print Service, Wi-Fi Direct)
Near Field Communication	Std	Std
Embedded Software Platform or Extensible Solutions Interface	Java and Web Solutions (JAWS)	bizhub Extended Solution Technology (bEST)
FACSIMILE SPECIFICATIONS		
Scanner Technology	CCD	CCD
Compression Method	MH/MR/MMR/JBIG	MH/MR/MMR/JBIG
Modem Speed	33.6 Kbps	33.6 Kbps
Max TX Resolution	600 x 600 dpi	600 x 600 dpi
Gray Scale/Halftones	Info not avail	256 levels
Transfer Hub	Info not avail	Yes
DIALING CAPABILITIES		
Broadcasting (Groups/Dest)	Info not avail/500	100/605
Redial (Attempts/Intervals)	Info not avail	7/1 to 15 min
One Touch	1000	None
PRINTER SPECIFICATIONS		
Engine Mfr & Model	KYOCERA/TASKalfa 6003i	Konica Minolta/bizhub 558e
Compatibility	PC, Mac	PC, Mac
Speed	60 ppm	55 ppm
First-Page-Out Time	3.8 sec	3.5 sec
Max Print Area	312 x 442	311.2 x 457.2
Print from USB	Yes (JPEG, PDF, TIFF, XPS)	Yes (DOCX, JPEG, PDF, compact PDF, PPML, PPTX, TIFF, VDX, XLSX, XPS, compact XPS, ZIP)
Enhanced Resolution	9600 x 600 dpi	1800 x 600 dpi
Unenhanced Resolution	1200 x 1200 dpi	1200 x 1200 dpi
Std/Max Printer Memory	Shared	Shared
Controller Mfr/Model	KYOCERA/Info not avail	Konica Minolta/Emperon
Processor/Bits/MHz	Freescale QorIQ T1024/Info not avail/1.2 GHz	ARM Cortex MB86S72/Info not avail/1.6 GHz
SCANNER AND IMAGE MANAGEMENT SPECIFICATIONS		
Technology/Scan Speed	CCD/80 ipm color, 80 ipm black or 100 ipm color, 100 ipm black or 120 ipm color, 120 ipm black	CCD/120 ipm color, 120 ipm black
Max Resolution	600 x 600 dpi	600 x 600 dpi
TWAIN Compatible	Yes	Yes
Scan Destinations:		
Cloud	Yes	Yes
I-fax	Yes	Yes
FTP	Yes	Yes
SMB	Yes	Yes
HDD	Yes	Yes
URL	No	Yes
USB	Yes	Yes

© 2019 Buyers Laboratory LLC

d-Copia 6001MF selling against Lexmark MX911de

	Olivetti d-COPIA 6001MF	Lexmark MX911de
OEM	KYOCERA (China)	Lexmark (China)
Also Sold As	KYOCERA TASKalfa 6003i	Info not avail
TYPE	Monochrome copier, MF	Monochrome printer, MF
Configuration/Scanner	Desktop,digital	Desktop,digital
Technology	Laser	Laser
GENERAL SPECIFICATIONS/PAPER HANDLING		
First Copy Time	3.4 sec	5.8 sec
Multicopy (Ltr/Lg/Ldgr)	60/30 cpm	55 cpm/Info not avail
Warm-up Time	17 sec	None
Std Paper Source(s)	Dual drawer	Dual drawer
Std Paper Capacity	500/500 sheets	500/500 sheets
Paper Weights	52 to 300 gsm	60 to 256 gsm
Bypass/Paper Weights	150-sheet/52 to 300 gsm	150-sheet/60 to 256 gsm
Max Paper Sources	5	6
Max Paper Capacity	7,150 sheets	6,650 sheets
Max Original Size	A3	A3
Output Size (Min/Max)	A6/SRA3	88.9 x 139.7/SRA3
Copy Resolution	600 x 600 dpi	600 x 600 dpi
System Memory (Std/Max)	4-GB RAM, 8-GB and 320-GB HD/4-GB RAM, 8-GB and 320-GB HD	1-GB RAM, 320-GB+ HD/3-GB RAM, 320-GB+ HD
Document Feeder	Opt RADF, DSPF and DSPF	Std DSPF
Document Feeder Capacity	140 orig, 270 orig, 270 orig	100 orig
Paper Weights	35 to 160 gsm, 35 to 220 gsm	35 to 163 gsm
Finisher	Opt finishers	Opt finishers
Tray/Stapling/Position(s)	500, 1,000, 4,000, 4,000/50, 50, 65, 100/3	500, 3,500, 2,500/50/3, 3, 4
SECURITY SPECS		
Network User Authentication	Yes	Yes
IP Address Filtering	Yes	Yes
MAC Address Filtering	Yes	No
HDD Overwrite	Std	Std
Max Overwrites	3	3
HDD Encryption	Std	Std
Secure Print	Yes	Yes
Encrypted Secure Print	Yes	Yes
Encrypted PDF Mode (Encrypted Scanning)	Yes	Std
IPsec	Yes	Yes
Secure Sockets Layer (SSL)	Yes	Yes
SNMPv3	Yes	Yes
Transport Layer Security	Yes	Yes
CONTROL PANEL	257 mm color touchscreen	Keypad and 254 mm color touchscreen
Quantity Selector	1 to 9,999 (0 to 9 touch keys)	1 to 999 (0 to 9 keypad)
Message Display	Yes	Yes
Help Key	Yes	Yes
ADDITIONAL INFORMATION		
Dimensions (HxWxD)	790 mm x 602 mm x 665 mm	909 mm x 615 mm x 697 mm
Weight	83 kg	95 kg
Power Requirements	220-240 V, 7.2 A	220-240 V, Amps not avail
Energy Used While Power Off	0.3W	0W
Energy Used in Power Save Mode	0.7W	3.6W
Energy Used in Ready Mode	50W	220W
Energy Used While Copying	870W	950W
Energy Used While Printing	870W	925W
Energy Used While Scanning	Info not avail	230W
Max Power Consumption	1750W	Info not avail
TEC Value	3KWh	4.3KWh
Dedicated Outlet	Recommended	Not required
Energy Star Compliant	Yes	Yes
Operating Noise Level	54.9 dB	56 dB

d-Copia 6001MF selling against Lexmark MX911de (Cont.)

	Olivetti d-COPIA 6001MF	Lexmark MX911de
MULTIFUNCTION MODES		
Copier	Std	Std
Internet Fax	Opt	No
Network Printer	Std	Std
Printer	Std	Std
Fax	Opt	Std
Network Fax	Opt	Opt
PC Fax	Opt	Std
Scanner	Std	Std
CONNECTIVITY SPECIFICATIONS		
Operating System Support	Win XP, Server 2003, Vista, Server 2008, 7, Server 2012, 8, 8.1, 10, Mac OS X 10.9+, Linux, UNIX	Win XP, Server 2003, Vista, Server 2008, 7, Server 2012, 8, Mac OS X 10.6-10.9, Linux, Novell Netware, UNIX
Parallel Interface	None	Opt
Serial Interface	None	Opt
USB Interface	Std 2.0, std 2.0 (host) x 4	Std 2.0, std 2.0 (host)
Network Interface	Std Ethernet, opt wireless	Std Ethernet, opt wireless
Interface Type	10/100/1000BaseTX, 802.11b/g/n	10/100/1000BaseTX, 802.11b/g/n
Mobile Print Support	Yes (Apple AirPrint, Olivetti Mobile Print, Wi-Fi Direct)	Yes (Apple AirPrint, Lexmark Mobile Print, Wi-Fi Direct)
Near Field Communication	Std	No
Embedded Software Platform or Extensible Solutions Interface	Java and Web Solutions (JAWS)	embedded solutions framework (eSF)
FACSIMILE SPECIFICATIONS		
Scanner Technology	CCD	CCD/CIS
Compression Method	MH/MR/MMR/JBIG	MH/MR/MMR/JBIG/JPEG
Modem Speed	33.6 Kbps	33.6 Kbps
Max TX Resolution	600 x 600 dpi	600 x 600 dpi
Gray Scale/Halftones	Info not avail	256 levels
Transfer Hub	Info not avail	No
DIALING CAPABILITIES		
Broadcasting (Groups/Dest)	Info not avail/500	64/400
Redial (Attempts/Intervals)	Info not avail	9/1 to 200 min
One Touch	1000	None
PRINTER SPECIFICATIONS		
Engine Mfr & Model	KYOCERA/TASKalfa 6003i	Konica Minolta/bizhub 554e
Compatibility	PC, Mac	PC, Mac
Speed	60 ppm	55 ppm
First-Page-Out Time	3.8 sec	5.5 sec
Max Print Area	312 x 442	315 x 452
Print from USB	Yes (JPEG, PDF, TIFF, XPS)	Yes (BMP, DCX, GIF, JPEG, PCX, PDF, PNG, TIFF, XPS)
Enhanced Resolution	9600 x 600 dpi	2400 x 600 dpi
Unenhanced Resolution	1200 x 1200 dpi	1200 x 1200 dpi
Std/Max Printer Memory	Shared	Shared
Controller Mfr/Model	KYOCERA/Info not avail	Lexmark/Info not avail
Processor/Bits/MHz	Freescale QorIQ T1024/Info not avail/1.2 GHz	Dual Core/32/800
SCANNER AND IMAGE MANAGEMENT SPECIFICATIONS		
Technology/Scan Speed	CCD/80 ipm color, 80 ipm black or 100 ipm color, 100 ipm black or 120 ipm color, 120 ipm black	CCD/CIS/80 ipm color, 80 ipm black
Max Resolution	600 x 600 dpi	600 x 600 dpi
TWAIN Compatible	Yes	Yes
Scan Destinations:		
Cloud	Yes	INA
I-fax	Yes	No
FTP	Yes	Yes
SMB	Yes	Yes
HDD	Yes	Opt*
URL	No	Yes
USB	Yes	Yes

© 2019 Buyers Laboratory LLC

d-Copia 6001MF selling against Ricoh 6055SP

	Olivetti d-COPIA 6001MF	Ricoh MP 6055SP
OEM	KYOCERA (China)	Ricoh (Info not avail)
Also Sold As	KYOCERA TASKalfa 6003i	None
TYPE	Monochrome copier, MF	Monochrome copier, MF
Configuration/Scanner	Desktop,digital	Desktop,digital
Technology	Laser	Laser
GENERAL SPECIFICATIONS/PAPER HANDLING		
First Copy Time	3.4 sec	2.9 sec
Multicopy (Ltr/Lgl/Ldgr)	60/30 cpm	60 cpm/Info not avail
Warm-up Time	17 sec	20 sec
Std Paper Source(s)	Dual drawer	Dual drawer
Std Paper Capacity	500/500 sheets	550/550 sheets
Paper Weights	52 to 300 gsm	60 to 300 gsm
Bypass/Paper Weights	150-sheet/52 to 300 gsm	100-sheet/52 to 300 gsm
Max Paper Sources	5	6
Max Paper Capacity	7,150 sheets	4,700 sheets
Max Original Size	A3	A3
Output Size (Min/Max)	A6/SRA3	A5/304.8 x 457.2
Copy Resolution	600 x 600 dpi	600 x 600 dpi
System Memory (Std/Max)	4-GB RAM, 8-GB and 320-GB HD/4-GB RAM, 8-GB and 320-GB HD	2-GB RAM, 320-GB HD/2-GB RAM, 320-GB HD
Document Feeder	Opt RADF, DSPF and DSPF	Std DSPF
Document Feeder Capacity	140 orig, 270 orig, 270 orig	220 orig
Paper Weights	35 to 160 gsm, 35 to 220 gsm	52 to 256 gsm
Finisher	Opt finishers	Opt finishers
Tray/Stapling/Position(s)	500, 1,000, 4,000, 4,000/50, 50, 65, 100/3	1,250, 3,250, 1,250, 2,250/50/3, 4, 3, 4
SECURITY SPECS		
Network User Authentication	Yes	Yes
IP Address Filtering	Yes	Yes
MAC Address Filtering	Yes	No
HDD Overwrite	Std	Std
Max Overwrites	3	9
HDD Encryption	Std	Std
Secure Print	Yes	Yes
Encrypted Secure Print	Yes	Yes
Encrypted PDF Mode (Encrypted Scanning)	Yes	Std
IPsec	Yes	Yes
Secure Sockets Layer (SSL)	Yes	Yes
SNMPv3	Yes	Yes
Transport Layer Security	Yes	Yes
CONTROL PANEL	257 mm color touchscreen	256.5 mm color touchscreen
Quantity Selector	1 to 9,999 (0 to 9 touch keys)	1 to 999 (0 to 9 touch keys)
Message Display	Yes	Yes
Help Key	Yes	No
ADDITIONAL INFORMATION		
Dimensions (HxWxD)	790 mm x 602 mm x 665 mm	963 mm x 587 mm x 684 mm
Weight	83 kg	62.5 kg
Power Requirements	220-240 V, 7.2 A	220-240 V, Amps not avail
Energy Used While Power Off	0.3W	Info not avail
Energy Used in Power Save Mode	0.7W	0.82W
Energy Used in Ready Mode	50W	48.8W
Energy Used While Copying	870W	Info not avail
Energy Used While Printing	870W	Info not avail
Energy Used While Scanning	Info not avail	Info not avail
Max Power Consumption	1750W	1780W
TEC Value	3KWh	2.8KWh
Dedicated Outlet	Recommended	Not required
Energy Star Compliant	Yes	Yes
Operating Noise Level	54.9 dB	69.8 dB

d-Copia 6001MF selling against Ricoh 6055SP (Cont.)

	Olivetti d-COPIA 6001MF	Ricoh MP 6055SP
MULTIFUNCTION MODES		
Copier	Std	Std
Internet Fax	Opt	Opt
Network Printer	Std	Std
Printer	Std	Std
Fax	Opt	Opt
Network Fax	Opt	Opt
PC Fax	Opt	Opt
Scanner	Std	Std
CONNECTIVITY SPECIFICATIONS		
Operating System Support	Win XP, Server 2003, Vista, Server 2008, 7, Server 2012, 8, 8.1, 10, Mac OS X 10.9+, Linux, UNIX	Win Vista, Server 2008, 7, Server 2012, 8, 8.1, 10, Mac OS X 10.7+, Linux, SAP, UNIX
Parallel Interface	None	Opt
Serial Interface	None	None
USB Interface	Std 2.0, std 2.0 (host) x 4	Std 2.0, std 2.0 (host) x 4
Network Interface	Std Ethernet, opt wireless	Std Ethernet, opt wireless
Interface Type	10/100/1000BaseTX, 802.11b/g/n	10/100/1000BaseTX, 802.11a/b/g/n, Bluetooth
Mobile Print Support	Yes (Apple AirPrint, Olivetti Mobile Print, Wi-Fi Direct)	Yes
Near Field Communication	Std	Std
Embedded Software Platform or Extensible Solutions Interface	Java and Web Solutions (JAWS)	Embedded Software Architecture
FACSIMILE SPECIFICATIONS		
Scanner Technology	CCD	CCD
Compression Method	MH/MR/MMR/JBIG	MH/MR/MMR/JBIG
Modem Speed	33.6 Kbps	33.6 Kbps
Max TX Resolution	600 x 600 dpi	200 x 200 dpi
Gray Scale/Halftones	Info not avail	256 levels
Transfer Hub	Info not avail	Yes
DIALING CAPABILITIES		
Broadcasting (Groups/Dest)	Info not avail/500	100/500
Redial (Attempts/Intervals)	Info not avail	Info not avail
One Touch	1000	None
PRINTER SPECIFICATIONS		
Engine Mfr & Model	KYOCERA/TASKalfa 6003i	Ricoh/MP 6055
Compatibility	PC, Mac	PC, Mac
Speed	60 ppm	60 ppm
First-Page-Out Time	3.8 sec	2.9 sec
Max Print Area	312 x 442	304.8 x 457.2
Print from USB	Yes (JPEG, PDF, TIFF, XPS)	Yes
Enhanced Resolution	9600 x 600 dpi	Not applicable
Unenhanced Resolution	1200 x 1200 dpi	1200 x 1200 dpi
Std/Max Printer Memory	Shared	Shared
Controller Mfr/Model	KYOCERA/Info not avail	Ricoh/Next Generation Architecture
Processor/Bits/MHz	Freescale QoriQ T1024/Info not avail/1.2 GHz	Intel Atom Processor Bay Trail/Info not avail/1.46 GHz
SCANNER AND IMAGE MANAGEMENT SPECIFICATIONS		
Technology/Scan Speed	CCD/80 ipm color, 80 ipm black or 100 ipm color, 100 ipm black or 120 ipm color, 120 ipm black	CCD/110 ipm color, 110 ipm black
Max Resolution	600 x 600 dpi	1200 x 1200 dpi
TWAIN Compatible	Yes	Yes
Scan Destinations:		
Cloud	Yes	Yes
I-fax	Yes	Yes
FTP	Yes	Yes
SMB	Yes	Yes
HDD	Yes	Yes
URL	No	Yes
USB	Yes	Yes

© 2019 Buyers Laboratory LLC

d-Copia 6001MF selling against Samsung MultiXpress K7600LX

	Olivetti d-COPIA 6001MF	Samsung MultiXpress K7600LX
OEM	KYOCERA (China)	Samsung (China)
Also Sold As	KYOCERA TASKalfa 6003i	None
TYPE	Monochrome copier, MF	Monochrome copier, MF
Configuration/Scanner	Desktop,digital	Desktop,digital
Technology	Laser	Laser
GENERAL SPECIFICATIONS/PAPER HANDLING		
First Copy Time	3.4 sec	3.1 sec
Multicopy (Ltr/Lgl/Ldgr)	60/30 cpm	60/Info not avail
Warm-up Time	17 sec	12 sec
Std Paper Source(s)	Dual drawer	Dual drawer
Std Paper Capacity	500/500 sheets	520/520 sheets
Paper Weights	52 to 300 gsm	60 to 320 gsm
Bypass/Paper Weights	150-sheet/52 to 300 gsm	100-sheet/60 to 320 gsm
Max Paper Sources	5	6
Max Paper Capacity	7,150 sheets	6,140 sheets
Max Original Size	A3	320 x 457
Output Size (Min/Max)	A6/SRA3	98 x 152/320 x 457
Copy Resolution	600 x 600 dpi	600 x 600 dpi
System Memory (Std/Max)	4-GB RAM, 8-GB and 320-GB HD/4-GB RAM, 8-GB and 320-GB HD	4-GB RAM, 320-GB HD/4-GB RAM, 320-GB HD
Document Feeder	Opt RADF, DSPF and DSPF	Std DSPF
Document Feeder Capacity	140 orig, 270 orig, 270 orig	100 orig
Paper Weights	35 to 160 gsm, 35 to 220 gsm	42 to 163 gsm
Finisher	Opt finishers	Opt finishers
Tray/Stapling/Position(s)	500, 1,000, 4,000, 4,000/50, 50, 65, 100/3	550, 2,250, 3,250/50, 65, 65/Info not avail
SECURITY SPECS		
Network User Authentication	Yes	Yes
IP Address Filtering	Yes	Yes
MAC Address Filtering	Yes	Yes
HDD Overwrite	Std	Std
Max Overwrites	3	9
HDD Encryption	Std	Std
Secure Print	Yes	Yes
Encrypted Secure Print	Yes	Yes
Encrypted PDF Mode (Encrypted Scanning)	Yes	Yes
IPsec	Yes	Yes
Secure Sockets Layer (SSL)	Yes	Yes
SNMPv3	Yes	Yes
Transport Layer Security	Yes	Yes
CONTROL PANEL		
	257 mm color touchscreen	256.5 mm color touchscreen
Quantity Selector	1 to 9,999 (0 to 9 touch keys)	1 to 9,999 (0 to 9 touch keys)
Message Display	Yes	Yes
Help Key	Yes	Yes
ADDITIONAL INFORMATION		
Dimensions (HxWxD)	790 mm x 602 mm x 665 mm	883.7 mm x 585 mm x 670 mm
Weight	83 kg	84.3 kg
Power Requirements	220-240 V, 7.2 A	220-240 V, Amps not avail
Energy Used While Power Off	0.3W	0W
Energy Used in Power Save Mode	0.7W	2W
Energy Used in Ready Mode	50W	60W
Energy Used While Copying	870W	900W
Energy Used While Printing	870W	900W
Energy Used While Scanning	Info not avail	Info not avail
Max Power Consumption	1750W	1300W
TEC Value	3KWh	3.1KWh
Dedicated Outlet	Recommended	Recommended
Energy Star Compliant	Yes	Yes
Operating Noise Level	54.9 dB	59 dB

d-Copia 6001MF selling against Samsung MultiXpress K7600LX (Cont.)

	Olivetti d-COPIA 6001MF	Lexmark MX911de
MULTIFUNCTION MODES		
Copier	Std	Std
Internet Fax	Opt	No
Network Printer	Std	Std
Printer	Std	Std
Fax	Opt	Std
Network Fax	Opt	Opt
PC Fax	Opt	Std
Scanner	Std	Std
CONNECTIVITY SPECIFICATIONS		
Operating System Support	Win XP, Server 2003, Vista, Server 2008, 7, Server 2012, 8, 8.1, 10, Mac OS X 10.9+, Linux, UNIX	Win XP, Server 2003, Vista, Server 2008, 7, Server 2012, 8, Mac OS X 10.6-10.9, Linux, Novell Netware, UNIX
Parallel Interface	None	Opt
Serial Interface	None	Opt
USB Interface	Std 2.0, std 2.0 (host) x 4	Std 2.0, std 2.0 (host)
Network Interface	Std Ethernet, opt wireless	Std Ethernet, opt wireless
Interface Type	10/100/1000BaseTX, 802.11b/g/n	10/100/1000BaseTX, 802.11b/g/n
Mobile Print Support	Yes (Apple AirPrint, Olivetti Mobile Print, Wi-Fi Direct)	Yes (Apple AirPrint, Lexmark Mobile Print, Wi-Fi Direct)
Near Field Communication	Std	No
Embedded Software Platform or Extensible Solutions Interface	Java and Web Solutions (JAWS)	embedded solutions framework (eSF)
FACSIMILE SPECIFICATIONS		
Scanner Technology	CCD	CCD/CIS
Compression Method	MH/MR/MMR/JBIG	MH/MR/MMR/JBIG/JPEG
Modem Speed	33.6 Kbps	33.6 Kbps
Max TX Resolution	600 x 600 dpi	600 x 600 dpi
Gray Scale/Halftones	Info not avail	256 levels
Transfer Hub	Info not avail	No
DIALING CAPABILITIES		
Broadcasting (Groups/Dest)	Info not avail/500	64/400
Redial (Attempts/Intervals)	Info not avail	9/1 to 200 min
One Touch	1000	None
PRINTER SPECIFICATIONS		
Engine Mfr & Model	KYOCERA/TASKalfa 6003i	Konica Minolta/bizhub 554e
Compatibility	PC, Mac	PC, Mac
Speed	60 ppm	55 ppm
First-Page-Out Time	3.8 sec	5.5 sec
Max Print Area	312 x 442	315 x 452
Print from USB	Yes (JPEG, PDF, TIFF, XPS)	Yes (BMP, DCX, GIF, JPEG, PCX, PDF, PNG, TIFF, XPS)
Enhanced Resolution	9600 x 600 dpi	2400 x 600 dpi
Unenhanced Resolution	1200 x 1200 dpi	1200 x 1200 dpi
Std/Max Printer Memory	Shared	Shared
Controller Mfr/Model	KYOCERA/Info not avail	Lexmark/Info not avail
Processor/Bits/MHz	Freescale QoriQ T1024/Info not avail/1.2 GHz	Dual Core/32/800
SCANNER AND IMAGE MANAGEMENT SPECIFICATIONS		
Technology/Scan Speed	CCD/80 ipm color, 80 ipm black or 100 ipm color, 100 ipm black or 120 ipm color, 120 ipm black	CCD/CIS/80 ipm color, 80 ipm black
Max Resolution	600 x 600 dpi	600 x 600 dpi
TWAIN Compatible	Yes	Yes
Scan Destinations:		
Cloud	Yes	INA
I-fax	Yes	No
FTP	Yes	Yes
SMB	Yes	Yes
HDD	Yes	Opt*
URL	No	Yes
USB	Yes	Yes

© 2019 Buyers Laboratory LLC

d-Copia 6001MF selling against Sharp MX-M6050

	Olivetti d-COPIA 6001MF	Sharp MX-M6050
OEM	KYOCERA (China)	Sharp (China/Thailand/Japan)
Also Sold As	KYOCERA TASKalfa 6003i	Info not avail
TYPE	Monochrome copier, MF	Monochrome copier, MF
Configuration/Scanner	Desktop,digital	Desktop,digital
Technology	Laser	Laser
GENERAL SPECIFICATIONS/PAPER HANDLING		
First Copy Time	3.4 sec	3.5 sec
Multicopy (Ltr/Lgl/Ldgr)	60/30 cpm	60 cpm/Info not avail
Warm-up Time	17 sec	18 sec
Std Paper Source(s)	Dual drawer	Single drawer
Std Paper Capacity	500/500 sheets	550 sheets
Paper Weights	52 to 300 gsm	60 to 300 gsm
Bypass/Paper Weights	150-sheet/52 to 300 gsm	100-sheet/55 to 300 gsm
Max Paper Sources	5	6
Max Paper Capacity	7,150 sheets	6,300 sheets
Max Original Size	A3	A3
Output Size (Min/Max)	A6/SRA3	A5/A3+
Copy Resolution	600 x 600 dpi	600 x 600 dpi
System Memory (Std/Max)	4-GB RAM, 8-GB and 320-GB HD/4-GB RAM, 8-GB and 320-GB HD	5-GB RAM/5-GB RAM, 500-GB HD
Document Feeder	Opt RADF, DSPF and DSPF	Std RADF
Document Feeder Capacity	140 orig, 270 orig, 270 orig	100 orig
Paper Weights	35 to 160 gsm, 35 to 220 gsm	Info not avail
Finisher	Opt finishers	Opt finishers
Tray/Stapling/Position(s)	500, 1,000, 4,000, 4,000/50, 50, 65, 100/3	500, 1,000, 1,000, 3,000, 3,000/50, 50, 50, 65, 65/3
SECURITY SPECS		
Network User Authentication	Yes	Yes
IP Address Filtering	Yes	Yes
MAC Address Filtering	Yes	Yes
HDD Overwrite	Std	Opt
Max Overwrites	3	10
HDD Encryption	Std	Opt
Secure Print	Yes	Yes
Encrypted Secure Print	Yes	Yes
Encrypted PDF Mode (Encrypted Scanning)	Yes	Yes
IPsec	Yes	Yes
Secure Sockets Layer (SSL)	Yes	Yes
SNMPv3	Yes	Yes
Transport Layer Security	Yes	Yes
CONTROL PANEL	257 mm color touchscreen	256.5 mm color touchscreen
Quantity Selector	1 to 9,999 (0 to 9 touch keys)	1 to 9,999 (0 to 9 touch keys)
Message Display	Yes	Yes
Help Key	Yes	Yes
ADDITIONAL INFORMATION		
Dimensions (HxWxD)	790 mm x 602 mm x 665 mm	834 mm x 608 mm x 650 mm
Weight	83 kg	64 kg
Power Requirements	220-240 V, 7.2 A	220-240 V, Amps not avail
Energy Used While Power Off	0.3W	Info not avail
Energy Used in Power Save Mode	0.7W	Info not avail
Energy Used in Ready Mode	50W	Info not avail
Energy Used While Copying	870W	Info not avail
Energy Used While Printing	870W	Info not avail
Energy Used While Scanning	Info not avail	Info not avail
Max Power Consumption	1750W	1840W
TEC Value	3KWh	Info not avail
Dedicated Outlet	Recommended	Recommended
Energy Star Compliant	Yes	Yes
Operating Noise Level	54.9 dB	Info not avail

d-Copia 6001MF selling against Sharp MX-M6050 (Cont.)

	Olivetti d-COPIA 6001MF	Sharp MX-M6050
MULTIFUNCTION MODES		
Copier	Std	Std
Internet Fax	Opt	Opt
Network Printer	Std	Std
Printer	Std	Std
Fax	Opt	Opt
Network Fax	Opt	Opt
PC Fax	Opt	Opt
Scanner	Std	Std
CONNECTIVITY SPECIFICATIONS		
Operating System Support	Win XP, Server 2003, Vista, Server 2008, 7, Server 2012, 8, 8.1, 10, Mac OS X 10.9+, Linux, UNIX	Win Server 2008, 7, Server 2012, 8.1, 10, Server 2016, Mac OS X 10.6-10.13, Citrix
Parallel Interface	None	None
Serial Interface	None	None
USB Interface	Std 2.0, std 2.0 (host) x 4	Std 2.0, std 2.0 (host) x 2
Network Interface	Std Ethernet, opt wireless	Std Ethernet, opt wireless
Interface Type	10/100/1000BaseTX, 802.11b/g/n	10/100/1000BaseT, 802.11b/g/n
Mobile Print Support	Yes (Apple AirPrint, Olivetti Mobile Print, Wi-Fi Direct)	Yes (Apple AirPrint, Google Cloud Print, Sharpdesk Mobile, Sharp Print Service Plugin)
Near Field Communication	Std	No
Embedded Software Platform or Extensible Solutions Interface	Java and Web Solutions (JAWS)	Open Systems Architecture (OSA)
FACSIMILE SPECIFICATIONS		
Scanner Technology	CCD	CCD
Compression Method	MH/MR/MMR/JBIG	MH/MR/MMR/JBIG
Modem Speed	33.6 Kbps	33.6 Kbps
Max TX Resolution	600 x 600 dpi	406 x 391 dpi
Gray Scale/Halftones	Info not avail	256 levels
Transfer Hub	Info not avail	Yes
DIALING CAPABILITIES		
Broadcasting (Groups/Dest)	Info not avail/500	500/500
Redial (Attempts/Intervals)	Info not avail	Programmable
One Touch	1000	Info not avail
PRINTER SPECIFICATIONS		
Engine Mfr & Model	KYOCERA/TASKalfa 6003i	Sharp/MX-M6050
Compatibility	PC, Mac	PC, Mac
Speed	60 ppm	60 ppm
First-Page-Out Time	3.8 sec	Info not avail
Max Print Area	312 x 442	Info not avail
Print from USB	Yes (JPEG, PDF, TIFF, XPS)	Yes (DOCX, JPEG, PCL, PDF, compact PDF, encrypted PDF, PNG, PPTX, PRN, PS, TIFF, TXT, XLSX)
Enhanced Resolution	9600 x 600 dpi	9600 x 600 dpi
Unenhanced Resolution	1200 x 1200 dpi	600 x 600 dpi
Std/Max Printer Memory	Shared	Shared
Controller Mfr/Model	KYOCERA/Info not avail	Sharp/Info not avail
Processor/Bits/MHz	Freescale QorIQ T1024/Info not avail/1.2 GHz	Info not avail/Info not avail/1.4 GHz
SCANNER AND IMAGE MANAGEMENT SPECIFICATIONS		
Technology/Scan Speed	CCD/80 ipm color, 80 ipm black or 100 ipm color, 100 ipm black or 120 ipm color, 120 ipm black	CCD/80 ipm color, 80 ipm black
Max Resolution	600 x 600 dpi	600 x 600 dpi
TWAIN Compatible	Yes	Yes
Scan Destinations:		
Cloud	Yes	Yes
I-fax	Yes	Yes
FTP	Yes	Yes
SMB	Yes	Yes
HDD	Yes	Yes
URL	No	No
USB	Yes	Yes

© 2019 Buyers Laboratory LLC

d-Copia 6001MF selling against Toshiba e-STUDIO6518A

	Olivetti d-COPIA 6001MF	Toshiba e-STUDIO6518A
OEM	KYOCERA (China)	Toshiba (Info not avail)
Also Sold As	KYOCERA TASKalfa 6003i	None
TYPE	Monochrome copier, MF	Monochrome copier, MF
Configuration/Scanner	Desktop,digital	Desktop,digital
Technology	Laser	Laser
GENERAL SPECIFICATIONS/PAPER HANDLING		
First Copy Time	3.4 sec	5.2 sec
Multicopy (Ltr/Lgl/Ldgr)	60/30 cpm	65/30 cpm
Warm-up Time	17 sec	15 sec
Std Paper Source(s)	Dual drawer	Triple drawer
Std Paper Capacity	500/500 sheets	540/540/2,320 sheets
Paper Weights	52 to 300 gsm	60 to 256 gsm
Bypass/Paper Weights	150-sheet/52 to 300 gsm	120-sheet/60 to 300 gsm
Max Paper Sources	5	5
Max Paper Capacity	7,150 sheets	6,020 sheets
Max Original Size	A3	A3
Output Size (Min/Max)	A6/SRA3	100 x 148/330 X 483
Copy Resolution	600 x 600 dpi	600 x 600 dpi
System Memory (Std/Max)	4-GB RAM, 8-GB and 320-GB HD/4-GB RAM, 8-GB and 320-GB HD	4-GB RAM, 320-GB HD/4-GB RAM, 320-GB HD
Document Feeder	Opt RADF, DSPF and DSPF	Std DSPF
Document Feeder Capacity	140 orig, 270 orig, 270 orig	300 orig
Paper Weights	35 to 160 gsm, 35 to 220 gsm	35 to 209 gsm
Finisher	Opt finishers	Opt finishers
Tray/Stapling/Position(s)	500, 1,000, 4,000, 4,000/50, 50, 65, 100/3	3,250/50/3
SECURITY SPECS		
Network User Authentication	Yes	Yes
IP Address Filtering	Yes	Yes
MAC Address Filtering	Yes	Yes
HDD Overwrite	Std	Opt
Max Overwrites	3	5
HDD Encryption	Std	Std
Secure Print	Yes	Yes
Encrypted Secure Print	Yes	Yes
Encrypted PDF Mode (Encrypted Scanning)	Yes	Std
IPsec	Yes	Opt
Secure Sockets Layer (SSL)	Yes	Yes
SNMPv3	Yes	Yes
Transport Layer Security	Yes	Yes
CONTROL PANEL		
Quantity Selector	257 mm color touchscreen	256 mm color touchscreen
Message Display	1 to 9,999 (0 to 9 touch keys)	1 to 9,999 (0 to 9 touch keys)
Help Key	Yes	Yes
ADDITIONAL INFORMATION		
Dimensions (HxWxD)	790 mm x 602 mm x 665 mm	1,227 mm x 955 mm x 698 mm
Weight	83 kg	195 kg
Power Requirements	220-240 V, 7.2 A	220-240 V, Amps not avail
Energy Used While Power Off	0.3W	Info not avail
Energy Used in Power Save Mode	0.7W	Info not avail
Energy Used in Ready Mode	50W	Info not avail
Energy Used While Copying	870W	Info not avail
Energy Used While Printing	870W	Info not avail
Energy Used While Scanning	Info not avail	Info not avail
Max Power Consumption	1750W	2000W
TEC Value	3KWh	Info not avail
Dedicated Outlet	Recommended	Recommended
Energy Star Compliant	Yes	Yes
Operating Noise Level	54.9 dB	Info not avail

d-Copia 6001MF selling against Toshiba e-STUDIO6518A (Cont.)

	Olivetti d-COPIA 6001MF	Toshiba e-STUDIO6518A
MULTIFUNCTION MODES		
Copier	Std	Std
Internet Fax	Opt	Opt
Network Printer	Std	Std
Printer	Std	Std
Fax	Opt	Opt
Network Fax	Opt	Opt
PC Fax	Opt	Opt
Scanner	Std	Std
CONNECTIVITY SPECIFICATIONS		
Operating System Support	Win XP, Server 2003, Vista, Server 2008, 7, Server 2012, 8, 8.1, 10, Mac OS X 10.9+, Linux, UNIX	Win Vista, Server 2008, 7, Server 2012, 8.1, 10, Server 2016, Mac OS X 10.6.8-10.13, Citrix, Linux, Novell Netware, UNIX
Parallel Interface	None	None
Serial Interface	None	None
USB Interface	Std 2.0, std 2.0 (host) x 4	Std 2.0, std 2.0 (host)
Network Interface	Std Ethernet, opt wireless	Std Ethernet, opt wireless
Interface Type	10/100/1000BaseTX, 802.11b/g/n	10/100/1000BaseTX, 802.11b/g/n, Bluetooth
Mobile Print Support	Yes (Apple AirPrint, Olivetti Mobile Print, Wi-Fi Direct)	Yes (Apple AirPrint, e-BRIDGE Print & Capture, Google Cloud Print, Mopria Print Service, Wi-Fi Direct)
Near Field Communication	Std	Opt
Embedded Software Platform or Extensible Solutions Interface	Java and Web Solutions (JAWS)	Elevate
FACSIMILE SPECIFICATIONS		
Scanner Technology	CCD	CCD
Compression Method	MH/MR/MMR/JBIG	MH/MR/MMR/JBIG
Modem Speed	33.6 Kbps	33.6 Kbps
Max TX Resolution	600 x 600 dpi	Info not avail
Gray Scale/Halftones	Info not avail	256 levels
Transfer Hub	Info not avail	Yes
DIALING CAPABILITIES		
Broadcasting (Groups/Dest)	Info not avail/500	200/400
Redial (Attempts/Intervals)	Info not avail	14/Programmable
One Touch	1000	Not applicable
PRINTER SPECIFICATIONS		
Engine Mfr & Model	KYOCERA/TASKalfa 6003i	Toshiba/e-STUDIO6518A
Compatibility	PC, Mac	PC, Mac
Speed	60 ppm	65 ppm
First-Page-Out Time	3.8 sec	Info not avail
Max Print Area	312 x 442	Info not avail
Print from USB	Yes (JPEG, PDF, TIFF, XPS)	Yes
Enhanced Resolution	9600 x 600 dpi	3600 x 1200 dpi
Unenhanced Resolution	1200 x 1200 dpi	1200 x 1200 dpi
Std/Max Printer Memory	Shared	Shared
Controller Mfr/Model	KYOCERA/Info not avail	Toshiba/e-BRIDGE Next
Processor/Bits/MHz	Freescale QorIQ T1024/Info not avail/1.2 GHz	Intel Atom E3825 Dual Core/Info not avail/1.33 GHz
SCANNER AND IMAGE MANAGEMENT SPECIFICATIONS		
Technology/Scan Speed	CCD/80 ipm color, 80 ipm black or 100 ipm color, 100 ipm black or 120 ipm color, 120 ipm black	CCD/120 ipm color, 120 ipm black
Max Resolution	600 x 600 dpi	600 x 600 dpi
TWAIN Compatible	Yes	Yes
Scan Destinations:		
Cloud	Yes	Yes
I-fax	Yes	Yes
FTP	Yes	Yes
SMB	Yes	Yes
HDD	Yes	Yes
URL	No	INA
USB	Yes	Yes

© 2019 Buyers Laboratory LLC

d-Copia 6001MF selling against Xerox AltaLink B8055

	Olivetti d-COPIA 5001MF	Xerox AltaLink B8045
Domestic Intro Date	February 2019	May 2017
OEM	KYOCERA (China)	Fuji Xerox and Xerox (Malaysia/Singapore)
Also Sold As	KYOCERA TASKalfa 5003i;	None
TYPE	Monochrome copier, MF	Monochrome copier, MF
Configuration/Scanner	Desktop,digital	Console,digital
Technology	Laser	LED
GENERAL SPECIFICATIONS/PAPER HANDLING		
First Copy Time	3.7 sec	3.8 sec
Multicopy (Ltr/Lgl/Ldgr)	50/25 cpm	45/31 cpm
Warm-up Time	17 sec	120 sec
Std Paper Source(s)	Dual drawer	Four tray
Std Paper Capacity	500/500 sheets	500/500/1,600/2,000 sheets
Paper Weights	52 to 300 gsm	60 to 200 gsm
Bypass/Paper Weights	150-sheet/52 to 300 gsm	100-sheet/60 to 216 gsm
Max Paper Sources	5	6
Max Paper Capacity	7,150 sheets	8,000 sheets
Max Original Size	A3	A3
Output Size (Min/Max)	A6/SRA3	A6/A3
Copy Resolution	600 x 600 dpi	600 x 600 dpi
System Memory (Std/Max)	4-GB RAM, 8-GB and 320-GB HD/4-GB RAM, 8-GB and 320-GB HD	4-GB RAM, 250-GB HD/4-GB RAM, 250-GB HD
Document Feeder	Opt RADF, DSPF and DSPF	Std DSPF
Document Feeder Capacity	140 orig, 270 orig, 270 orig	200 orig
Paper Weights	35 to 160 gsm, 35 to 220 gsm	50 to 160 gsm
Finisher	Opt finishers	Opt finishers
Tray/Stapling/Position(s)	500, 1,000, 4,000, 4,000/50, 50, 65, 100/3	2,250/50/3
SECURITY SPECS		
Network User Authentication	Yes	Yes
IP Address Filtering	Yes	Yes
MAC Address Filtering	Yes	Info not avail
HDD Overwrite	Std	Std
Max Overwrites	3	3
HDD Encryption	Std	Std
Secure Print	Yes	Yes
Encrypted Secure Print	Yes	Yes
Encrypted PDF Mode (Encrypted Scanning)	Yes	Yes
IPsec	Yes	Yes
Secure Sockets Layer (SSL)	Yes	Yes
SNMPv3	Yes	Yes
Transport Layer Security	Yes	Yes
CONTROL PANEL		
Quantity Selector	1 to 9,999 (0 to 9 touch keys)	1 to 9,999 (0 to 9 touch keys)
Message Display	Yes	Yes
Help Key	Yes	Yes
ADDITIONAL INFORMATION		
Dimensions (HxWxD)	790 mm x 602 mm x 665 mm	1,150 mm x 850 mm x 665 mm
Weight	83 kg	113 kg
Power Requirements	220-240 V, 7.2 A	220-240 V, 16 A
Energy Used While Power Off	0.3W	Info not avail
Energy Used in Power Save Mode	0.7W	4W
Energy Used in Ready Mode	50W	45W
Energy Used While Copying	740W	1150W
Energy Used While Printing	740W	1150W
Energy Used While Scanning	Info not avail	Info not avail
Max Power Consumption	1750W	Info not avail
TEC Value	2.4KWh	Info not avail
Dedicated Outlet	Recommended	Required
Energy Star Compliant	Yes	Yes
Operating Noise Level	53.1 dB	56 dB

d-Copia 6001MF selling against Xerox AltaLink B8055 (Cont.)

	Olivetti d-COPIA 6001MF	Xerox AltaLink B8055
OEM	KYOCERA (China)	Fuji Xerox and Xerox (Malaysia/Singapore)
Also Sold As	KYOCERA TASKalfa 6003i	None
TYPE	Monochrome copier, MF	Monochrome copier, MF
Configuration/Scanner	Desktop,digital	Console,digital
Technology	Laser	LED
GENERAL SPECIFICATIONS/PAPER HANDLING		
First Copy Time	3.4 sec	3.8 sec
Multicopy (Ltr/Lgl/Ldgr)	60/30 cpm	55/31 cpm
Warm-up Time	17 sec	120 sec
Std Paper Source(s)	Dual drawer	Four tray
Std Paper Capacity	500/500 sheets	500/500/1,600/2,000 sheets
Paper Weights	52 to 300 gsm	60 to 200 gsm
Bypass/Paper Weights	150-sheet/52 to 300 gsm	100-sheet/60 to 216 gsm
Max Paper Sources	5	6
Max Paper Capacity	7,150 sheets	8,000 sheets
Max Original Size	A3	A3
Output Size (Min/Max)	A6/SRA3	A6/A3
Copy Resolution	600 x 600 dpi	600 x 600 dpi
System Memory (Std/Max)	4-GB RAM, 8-GB and 320-GB HD/4-GB RAM, 8-GB and 320-GB HD	4-GB RAM, 250-GB HD/4-GB RAM, 250-GB HD
Document Feeder	Opt RADF, DSPF and DSPF	Std DSPF
Document Feeder Capacity	140 orig, 270 orig, 270 orig	200 orig
Paper Weights	35 to 160 gsm, 35 to 220 gsm	50 to 160 gsm
Finisher	Opt finishers	Opt finishers
Tray/Stapling/Position(s)	500, 1,000, 4,000, 4,000/50, 50, 65, 100/3	2,250/50/3
SECURITY SPECS		
Network User Authentication	Yes	Yes
IP Address Filtering	Yes	Yes
MAC Address Filtering	Yes	Info not avail
HDD Overwrite	Std	Std
Max Overwrites	3	3
HDD Encryption	Std	Std
Secure Print	Yes	Yes
Encrypted Secure Print	Yes	Yes
Encrypted PDF Mode (Encrypted Scanning)	Yes	Yes
IPsec	Yes	Yes
Secure Sockets Layer (SSL)	Yes	Yes
SNMPv3	Yes	Yes
Transport Layer Security	Yes	Yes
CONTROL PANEL		
Quantity Selector	1 to 9,999 (0 to 9 touch keys)	1 to 9,999 (0 to 9 touch keys)
Message Display	Yes	Yes
Help Key	Yes	Yes
ADDITIONAL INFORMATION		
Dimensions (HxWxD)	790 mm x 602 mm x 665 mm	1,150 mm x 850 mm x 665 mm
Weight	83 kg	113 kg
Power Requirements	220-240 V, 7.2 A	220-240 V, 16 A
Energy Used While Power Off	0.3W	Info not avail
Energy Used in Power Save Mode	0.7W	4W
Energy Used in Ready Mode	50W	45W
Energy Used While Copying	870W	1250W
Energy Used While Printing	870W	1250W
Energy Used While Scanning	Info not avail	Info not avail
Max Power Consumption	1750W	Info not avail
TEC Value	3KWh	Info not avail
Dedicated Outlet	Recommended	Required
Energy Star Compliant	Yes	Yes
Operating Noise Level	54.9 dB	56 dB