

# ALGAE

---

Chlorophyceae, Phaeophyceae &  
Rhodophyceae

# ALGAE

\* The algal herbarium of the Baudin Expedition contains 128 specimens.

\* The only cited collector is Leschenault (28 reports).

\* Origin of each specimen is mentioned. These places are : west coast (70 reports), New Holland (26 reports), south coast (15 reports), d'Entrecasteaux Channel (4 reports), Van Diemen's Land (3 reports), King Island (2 reports), Port Jackson (1 report).

Each algal specimen has been photographed. Accompanying labels are numbered chronologically (label 1 being the oldest). Information provided for each specimen consists of : the algal name (i.e. most recent name according to labels), the geographical origin, the name of the collector (when possible), additional relevant information (under the heading 'Nota'), the specimen's reference number (barcode) assigned by the Paris Museum of natural History (MNHN collection).

The three classes of macroalgae are considered successively : Green algae or Chlorophyceae (Chl), brown algae or Phaeophyceae (Pha) and red algae or Rhodophyceae (Rho). Genera in each class are sorted alphabetically. An index of genus names is given for all classes.

Occurrence of type materials :    *Cystoseira nodularia* (Pha 8),    *Heterocladia australis* (Rho 16),  
   *Laurencia filiformis* (Rho 23),    *Lenormandia prolifera* (Rho 25),  
   *Merrifieldia ramentacea* (Rho 26), *Osmundaria prolifera* (Rho 31)

# INDEX OF GENUS NAMES (ALGAE)

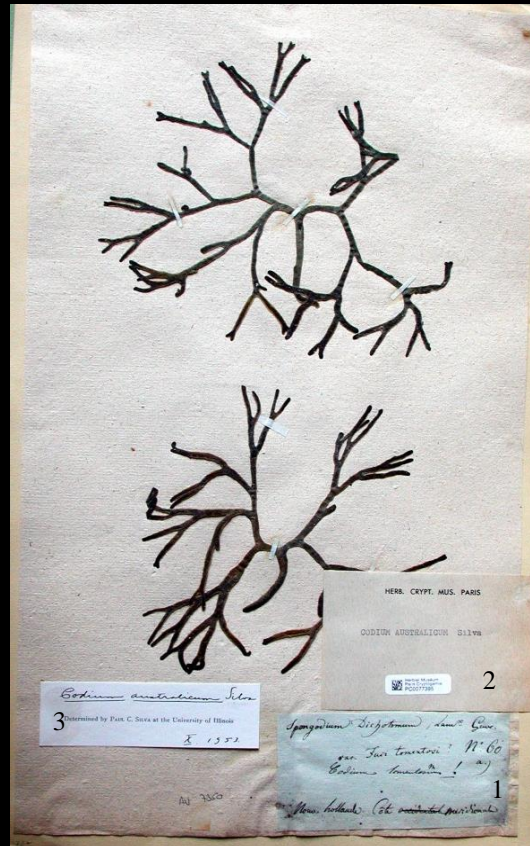
Acanthococcus	Rho 1		
Apoglossum	Rho 2		
		Peyssonnelia	Rho 32
		Phyllospora	Pha 33-39
Brongniartella	Rho 3	Plocamium	Rho 33-46
		Polycoelia	Rho 47
Callophyllis	Rho 4-5	Polyopes	Rho 47-48
Caulerpa	Chl 1	Polysiphonia	Rho 50-52
Champia	Rho 6		
Chrysiomenia	Rho 7	Sargassum	Pha 40-60
Codium	Chl 2-4	Spherococcus	Rho 53
Cystophyllum	Pha 5-7	Sporochnus	Pha 61
Cystoseira	Pha 8-14		
Cystophora	Pha 1-4	Thysanocladia	Rho 54-57
Dictyomena	Rho 9-10	Ulva	Chl 6
Dictyota	Pha 15		
Enteromorpha	Chl 5	Zonaria	Pha 62-64
Fucacidin	Pha 16		
Fucus	Pha 17-25		
Gigartina	Rho 11-12		
Griffithsia	Rho 13		
Halymenia	Rho 14-15		
Heterocladia	Rho 16		
Hormosira	Pha 26-27		
Hypnea	Rho 17		
Laurencia	Rho 18-24		
Lenormandia	Rho 25		
Macrocystis	Pha 28-30		
Merrifieldia	Rho 31		
Myriodesma	Pha 32		
Osmundaria	Rho 31		

# Chlorophyceae (Chl 1-Chl 3)



\**Caulerpa selaginoides*  
\*South coast

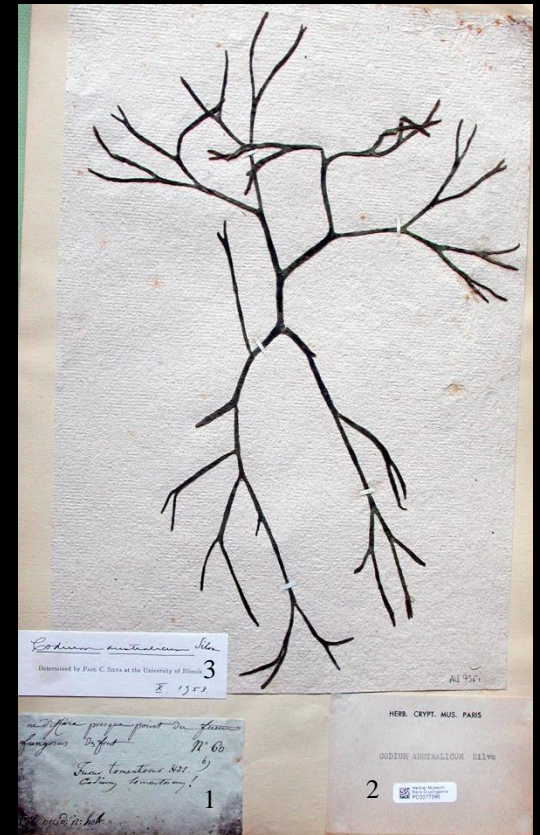
Barcode MNHN : PC0077413



\**Codium australicum*  
\*South coast

Nota : Revised by Silva , 1953  
[label 3]

Barcode MNHN : PC0077395



\**Codium australicum*  
\*West coast

Nota : Revised by Silva , 1953 [label 3]

Barcode MNHN : PC0077396



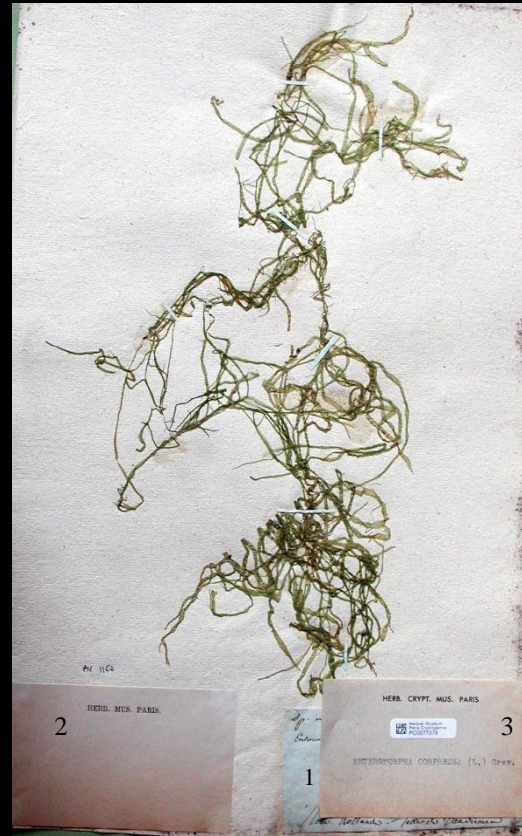
# Chlorophyceae (Chl 4-Chl 6)



\**Codium fragile* subsp. *tasmanicum*  
\*West coast

Nota : Revised by Silva, 1953 [label 4]

Barcode MNHN : PC0077399



\**Enteromorpha compressa*  
\*Van Diemen's Land

Barcode MNHN : PC0077379



\**Ulva lactuca*  
\*Van Diemen's Land

Barcode MNHN : PC0077383



# Phaeophyceae (Pha 1-Pha 3)



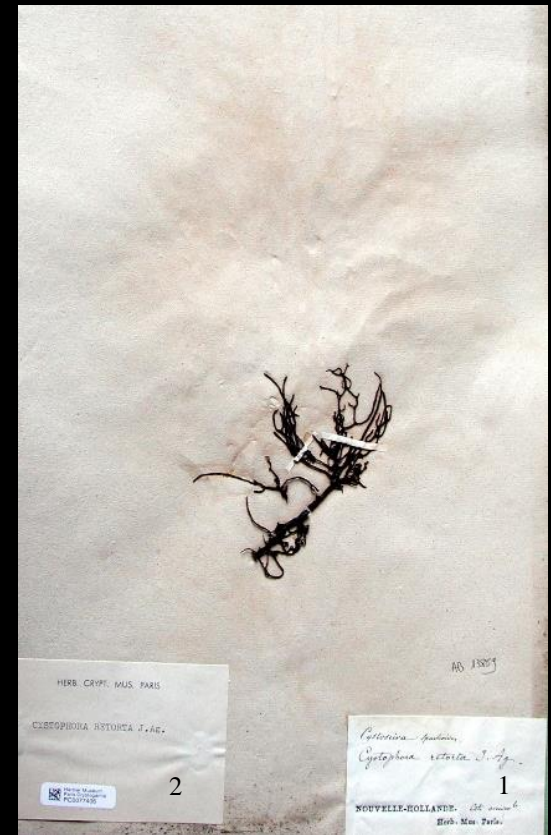
- \**Cystophora retorta*
- \*New Holland
- \*Collected by Leschenault

Barcode MNHN : PC0077405



- \**Cystophora retorta*
- \*West coast

Barcode MNHN : PC0077404



- \**Cystophora retorta*
- \*West coast

Barcode MNHN : PC0077406



# Phaeophyceae (Pha 4-Pha 6)



\**Cystophora torulosa*  
\*West coast

Barcode MNHN : PC0077408



\**Cystophyllum muricatum*  
\*West coast

Barcode MNHN : PC0077409



\**Cystophyllum muricatum*  
\*West coast

Barcode MNHN : PC0077410

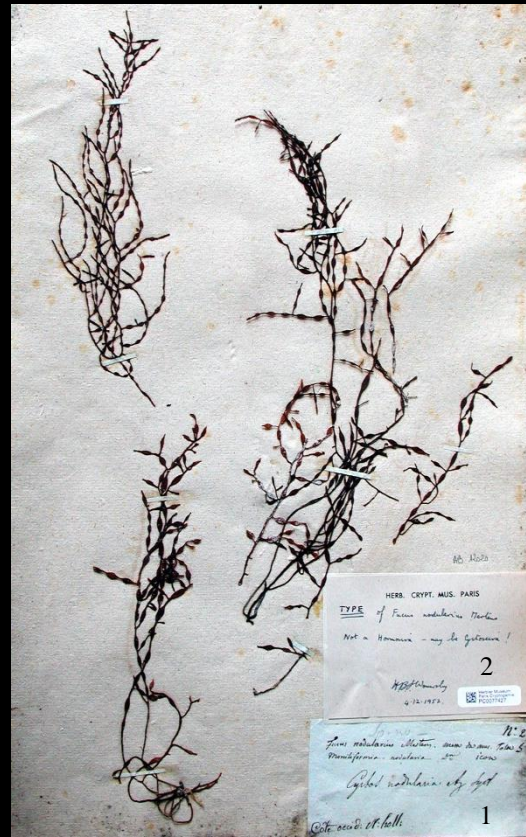


# Phaeophyceae (Pha 7-Pha 9)



\**Cystophyllum ornustum*  
\*West coast

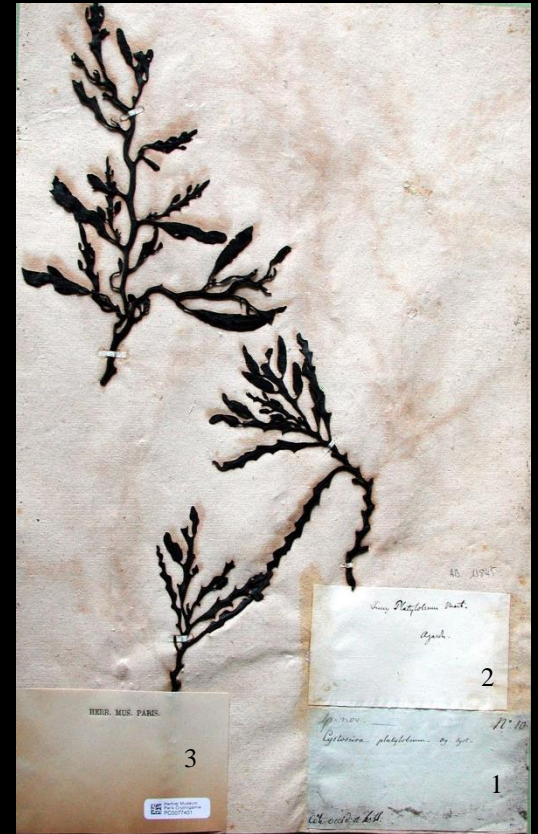
Barcode MNHN : PC0077412



TYPE  
\**Cystoseira nodularia*  
\*West coast

Nota : Revised by Wormesley, 1952  
(type of *Fucus nodularius*) [label 2]

Barcode MNHN : PC0077427

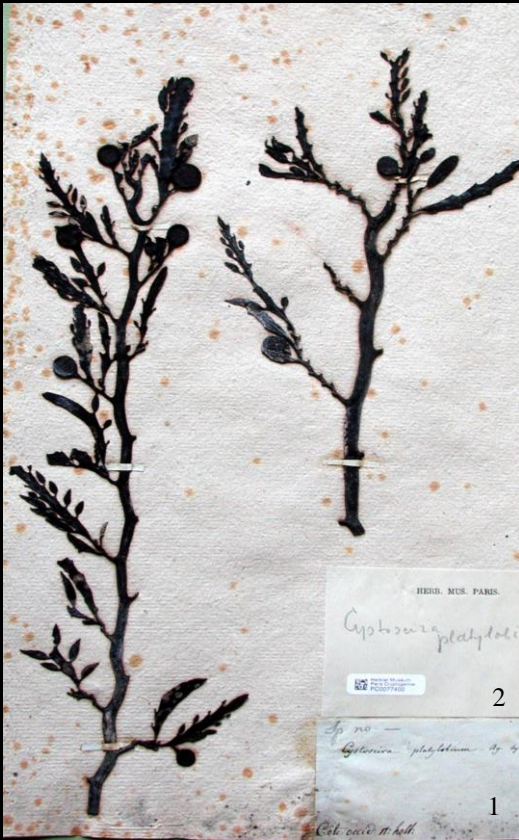


\**Cystoseira platylobium*  
\*West coast

Barcode MNHN : PC0077401



# Phaeophyceae (Pha 10-Pha 12)



\**Cystoseira platylobium*

\*West coast

Barcode MNHN : PC0077400



\**Cystoseira retroflexa*

\*West coast

\*Collected by Leschenault

Barcode MNHN : PC0077402

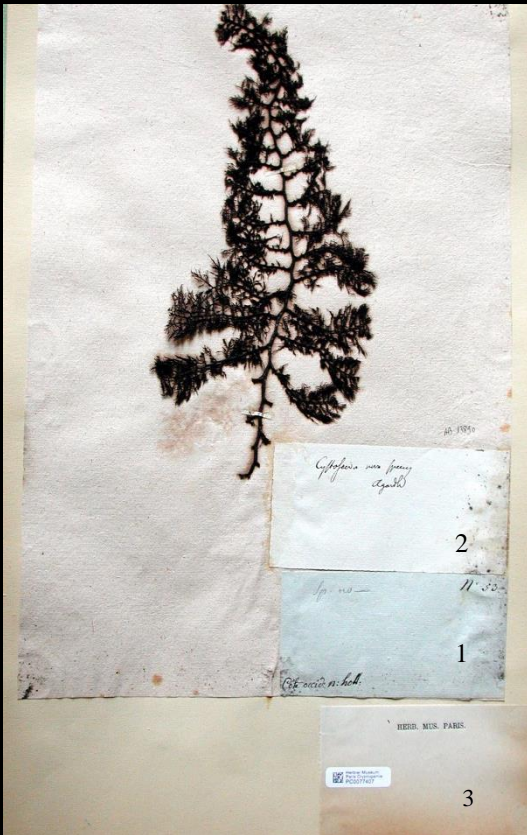


\**Cystoseira triquetra*

\*West coast

Barcode MNHN : PC0077421

# Phaeophyceae (Pha 13-Pha 15)



\*Unidentified *Cystoseira*  
\*West coast

Barcode MNHN : PC0077407



\*Unidentified *Cystoseira*  
\*West coast

Barcode MNHN : PC0077457



\**Dictyota marginata*  
\*New Holland

Barcode MNHN : PC0077447



# Phaeophyceae (Pha 16-Pha 18)



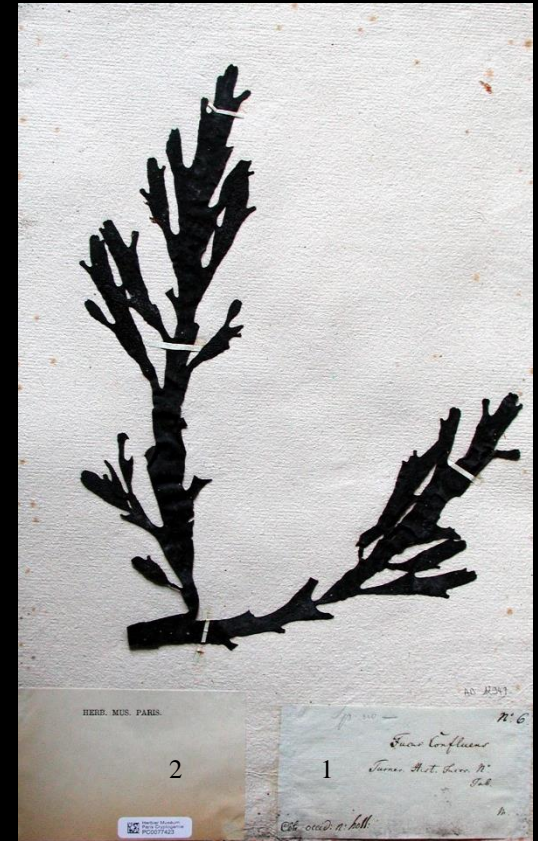
- \**Fucacidin gladiatus*
- \*West coast
- \*Collected by Leschenault

Barcode MNHN : PC0077441



- \**Fucus comosus*
- \*West coast

Barcode MNHN : PC0077437



- \**Fucus confluens*
- \*West coast

Barcode MNHN : PC0077423

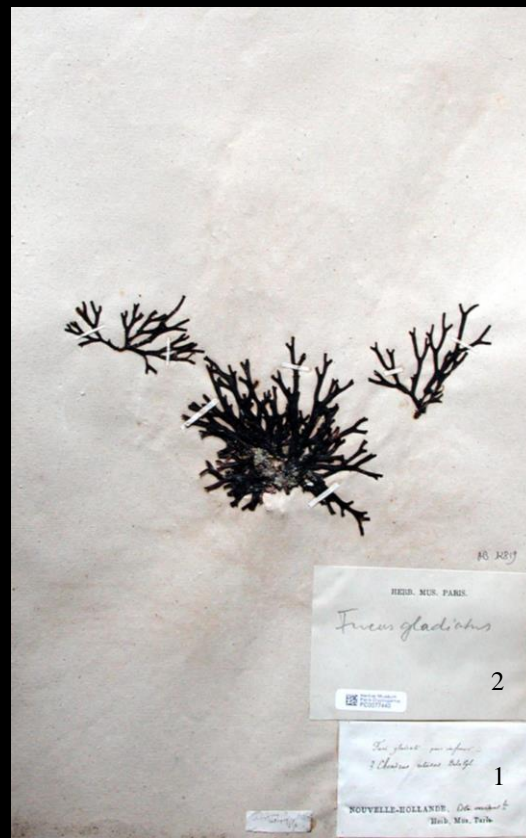


# Phaeophyceae (Pha 19-Pha 21)



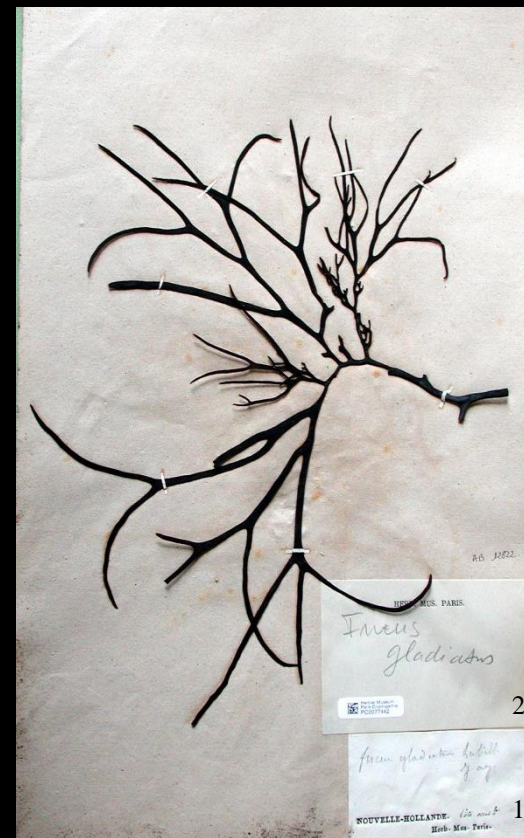
- \**Fucus flaccidus*
- \*West coast
- \*Collected by Leschenault

Barcode MNHN : PC0077403



- \**Fucus gladiatus*
- \*West coast

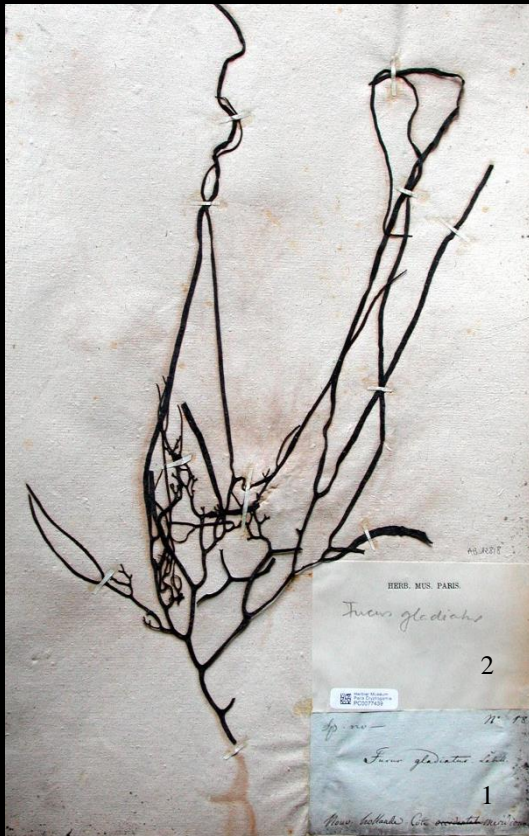
Barcode MNHN : PC0077442



- \**Fucus gladiatus*
- \*West coast

Barcode MNHN : PC0077440

# Phaeophyceae (Pha 22-Pha 24)



\**Fucus gladiatus*  
\*South coast

Barcode MNHN : PC0077439



\**Fucus gladiatus*  
\*West coast

Barcode MNHN : PC0077443



\**Fucus laudatus*  
\*New Holland  
\*Collected by Leschenault

Barcode MNHN : PC0077453

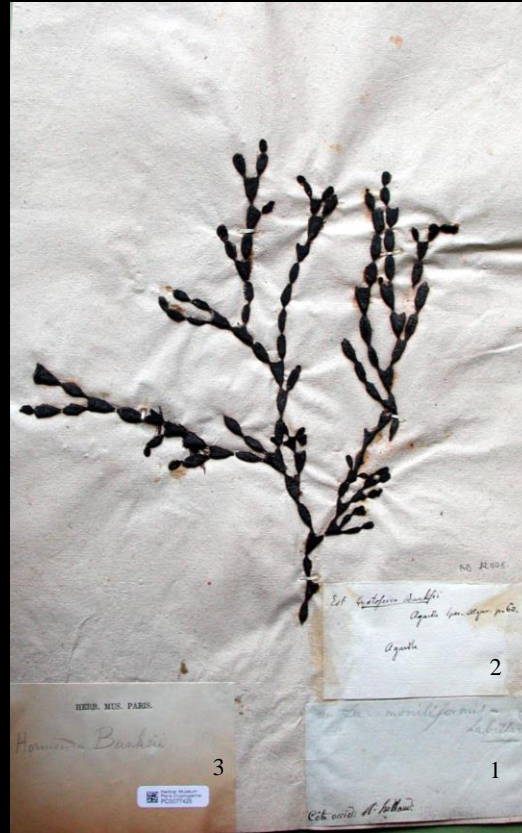


# Phaeophyceae (Pha 25-Pha 27)



\**Fucus obtusatus*  
\*West coast

Barcode MNHN : PC0077438



\**Hormosira banksii*  
\*West coast

Barcode MNHN : PC0077425



\**Hormosira banksii*  
\*South coast

Barcode MNHN : PC0077426

# Phaeophyceae (Pha 28-Pha 30)



- \**Macrocystis communis*
- \*d'Entrecasteaux Channel
- \*Collected by Leschenault

Nota : (1) In Leschenault's hand : « fucus pyriferus ; détroit d'Entrecasteaux ; N°73 » [label 1] ; (2) Revised by Rostafinski, 1877 [label 2]

Barcode MNHN : PC0077450



- \**Macrocystis communis* var. *pyriferus*
- \*d'Entrecasteaux Channel
- \*Collected by Leschenault

Barcode MNHN : PC0077451



- \**Macrocystis communis*
- \*d'Entrecasteaux Channel
- \*Collected by Leschenault

Nota : Revised by Rostafinski, 1877 [label 2]

Barcode MNHN : PC0077452



# Phaeophyceae (Pha 31-Pha 33)



- \*Unidentified *Moniliformia*
- \*West coast
- \*Collected by Leschenault

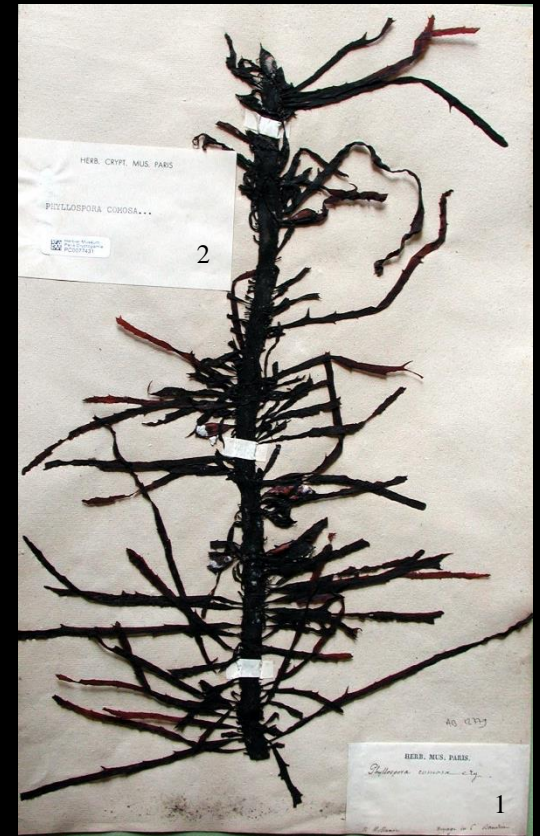
Barcode MNHN : PC0077428



- \**Myriodesma serrulata*
- \*West coast

Nota : Revised by André, 1987  
[label 3]

Barcode MNHN : PC0077429

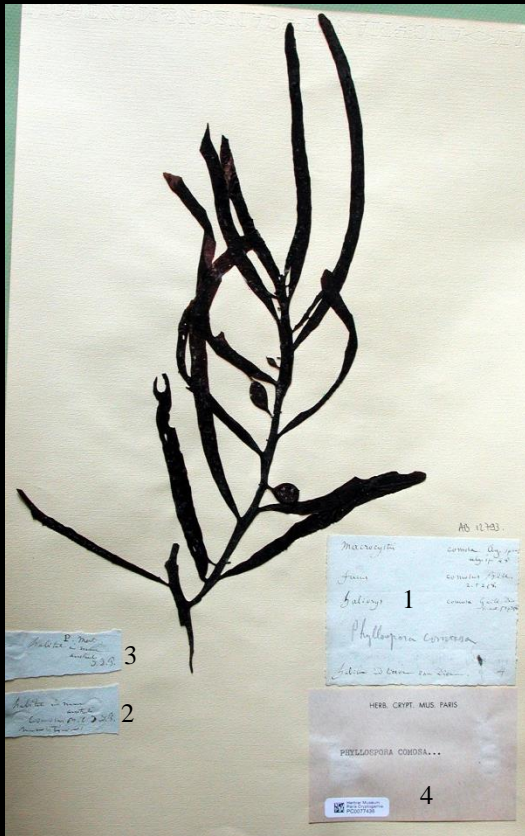


- \**Phyllospora comosa*
- \*New Holland

Barcode MNHN : PC0077431



# Phaeophyceae (Pha 34-Pha 36)



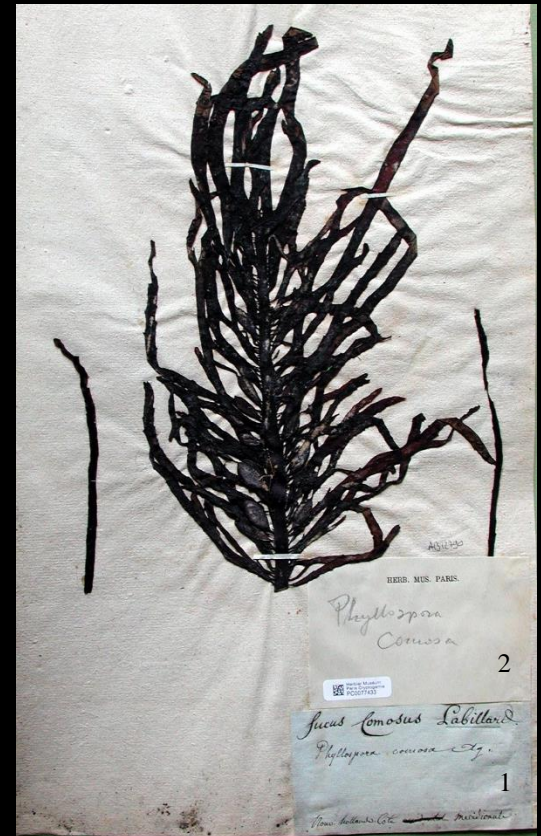
\**Phyllospora comosa*  
 \*Van Diemen's land

Barcode MNHN : PC0077436



\**Phyllospora comosa*  
 \*West coast  
 \*Collected by Leschenault

Barcode MNHN : PC0077432



\**Phyllospora comosa*  
 \*South coast

Barcode MNHN : PC0077433



# Phaeophyceae (Pha 37-Pha 39)



\**Phyllospora comosa*  
\*South coast

Barcode MNHN : PC0077435



\**Phyllospora comosa*  
\*Unknown locality

Nota : Voyage of citizen Baudin  
[label 1]

Barcode MNHN : PC0077430



\*Unidentified *Phyllospora*  
\*d'Entrecasteaux Channel

Barcode MNHN : PC0077434



# Phaeophyceae (Pha 40-Pha 42)



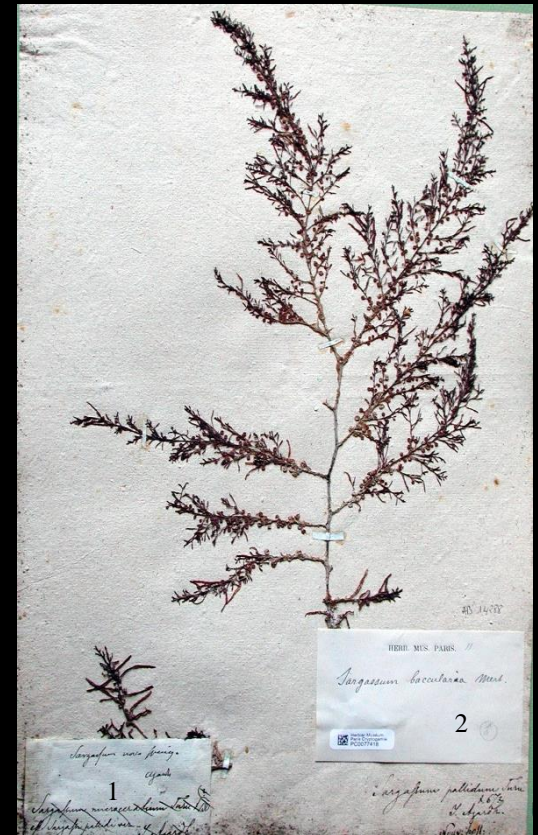
\**Sargassum acinaria*  
\*New Holland

Barcode MNHN : PC0077415



\**Sargassum baccularia*  
\*New Holland

Barcode MNHN : PC0077417



\**Sargassum baccularia*  
\*New Holland

Barcode MNHN : PC0077418

# Phaeophyceae (Pha 43-Pha 45)



\**Sargassum carpophyllum*

\*West coast

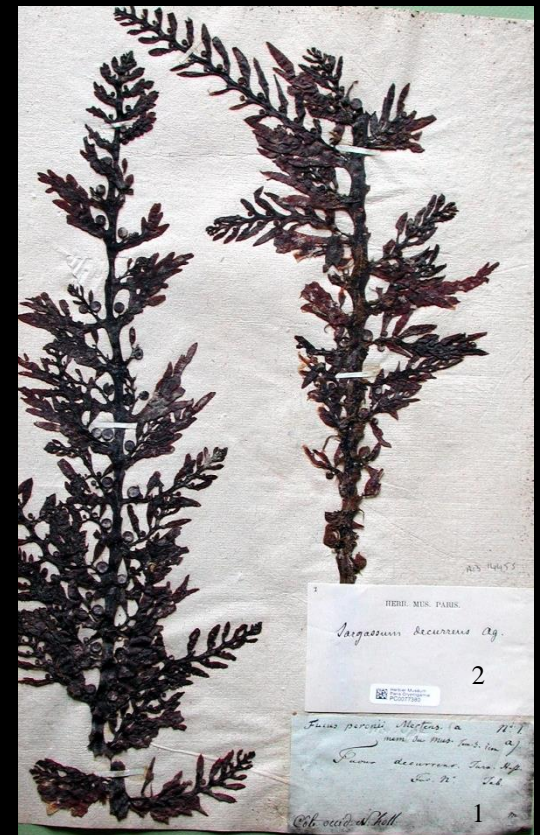
Barcode MNHN : PC0077419



\**Sargassum cinctum* var.  
*echinocarpa*

\*West coast

Barcode MNHN : PC0077420



\**Sargassum decurrens*

\*West coast

Barcode MNHN : PC0077380



# Phaeophyceae (Pha 46-Pha 48)



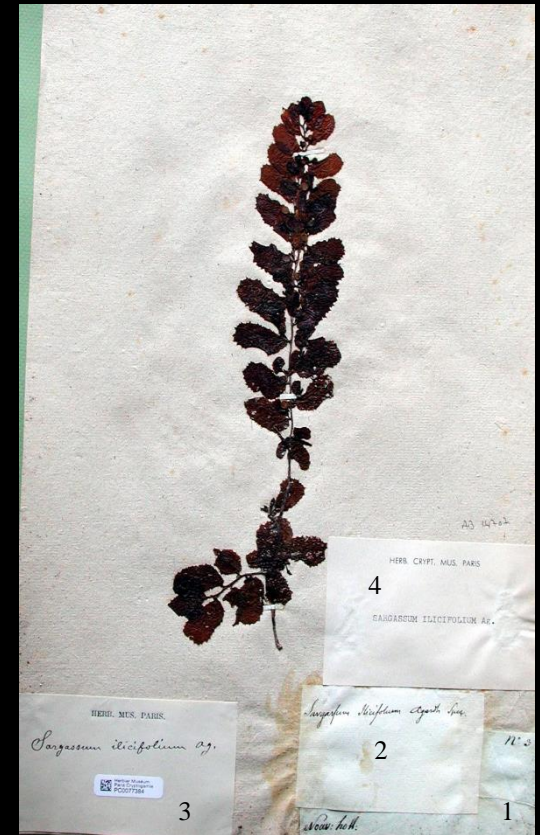
\**Sargassum decurrens*  
\*New Holland

Barcode MNHN : PC0077381



\**Sargassum filifolium*  
\*West coast

Barcode MNHN : PC0077382



\**Sargassum ilicifolium*  
\*New Holland

Barcode MNHN : PC0077384



# Phaeophyceae (Pha 49-Pha 51)



\**Sargassum ilicifolium*  
\*West coast

Barcode MNHN : PC0077385



\**Sargassum ilicifolium*  
\*New Holland

Barcode MNHN : PC0077386



\**Sargassum ilicifolium*  
\*West coast

Barcode MNHN : PC0077387



# Phaeophyceae (Pha 52-Pha 54)



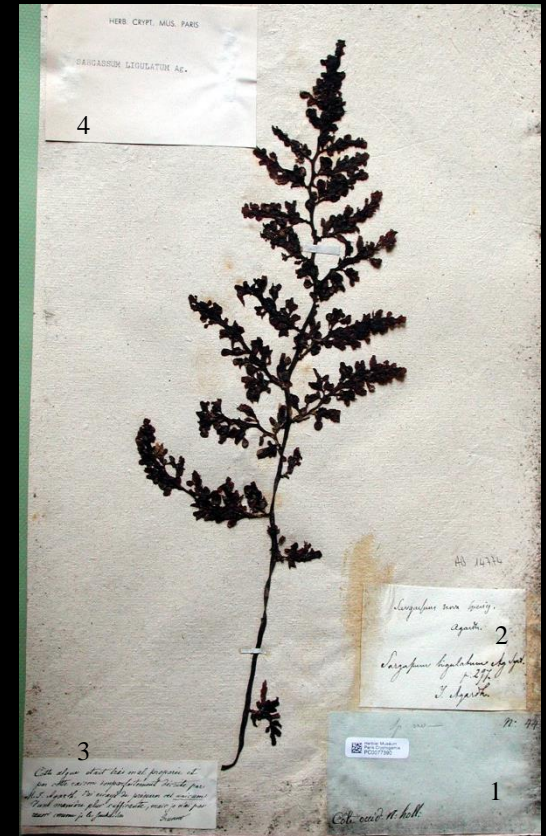
\**Sargassum ilicifolium*  
\*West coast

Barcode MNHN : PC0077388



\**Sargassum incisifolium*  
\*West coast

Barcode MNHN : PC0077389



\**Sargassum ligulatum*  
\*West coast

Barcode MNHN : PC0077390



# Phaeophyceae (Pha 55-Pha 57)



\**Sargassum paradoxum*  
\*West coast

Barcode MNHN : PC0077391



\**Sargassum subalcatum*  
\*West coast

Barcode MNHN : PC0077394



\**Sargassum verruculosum*  
\*West coast

Barcode MNHN : PC0077392



# Phaeophyceae (Pha 58-Pha 60)



\**Sargassum verruculosum*  
\*South coast

Barcode MNHN : PC0077393



\**Sargassum vestitum*  
\*West coast

Barcode MNHN : PC0077397



\**Sargassum vestitum*  
\*West coast  
\*Collected by Leschenault

Barcode MNHN : PC0077398





# Phaeophyceae (Pha 64)



\**Zonaria paniculata*

\*South coast

Barcode MNHN : PC0077445

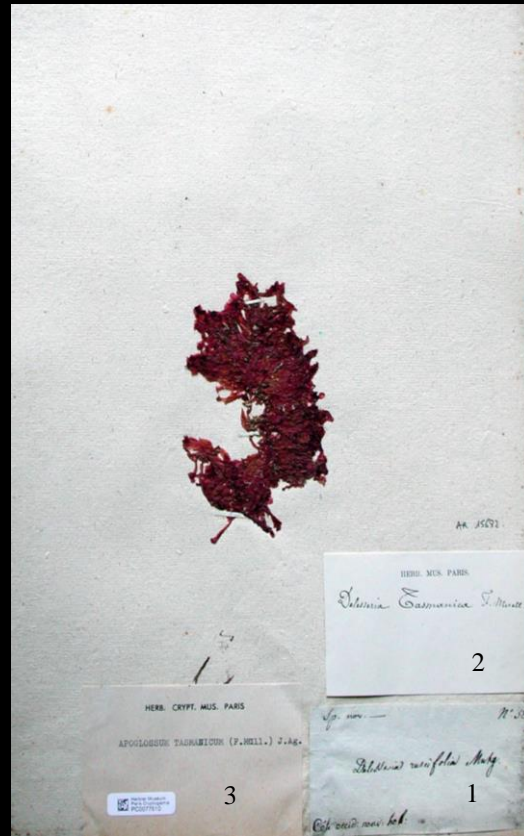


# Rhodophyceae (Rho 1-Rho 3)



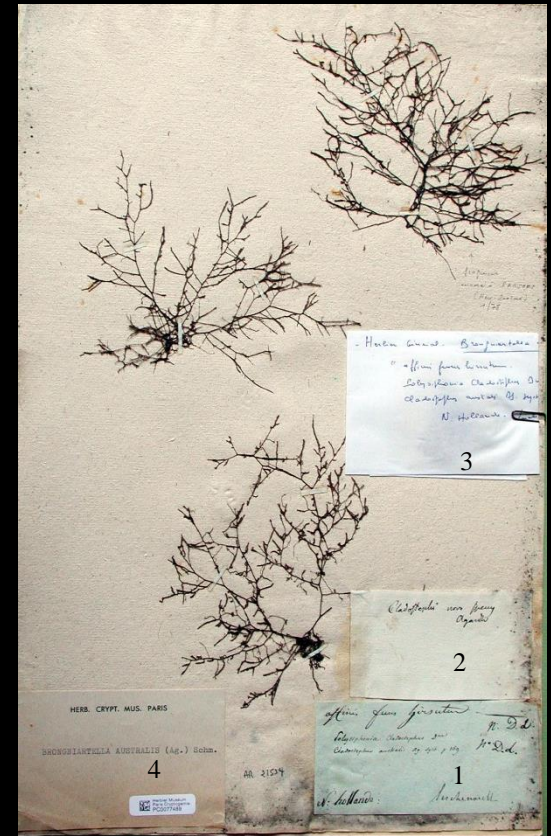
\**Acanthococcus spinuliger*  
\*West coast

Barcode MNHN : PC0077506



*Apoglossum tasmanicum*  
\*West coast

Barcode MNHN : PC0077510



\**Brongniartella australis*  
\*New Holland  
\*Collected by Leschenault

Barcode MNHN : PC0077489

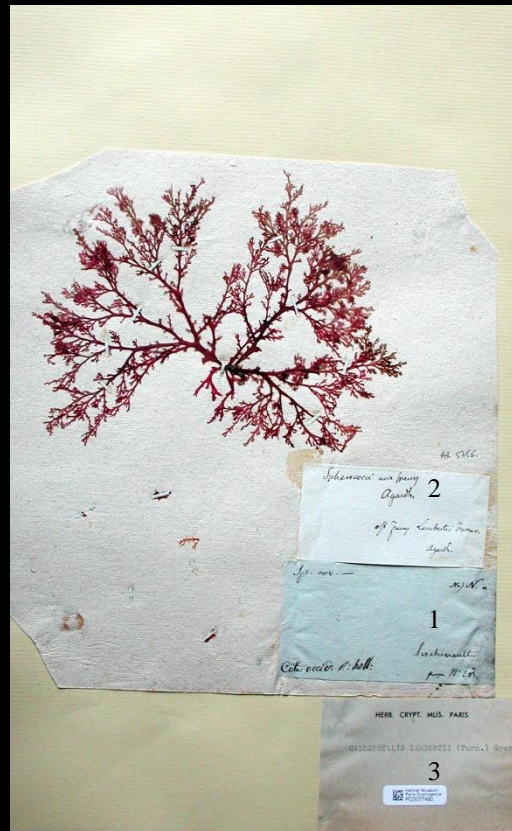


# Rhodophyceae (Rho 4-Rho 6)



\**Callophyllis lambertii*  
\*West coast

Barcode MNHN : PC0077481



\**Callophyllis lambertii*  
\*West coast  
\*Collected by Leschenault

Barcode MNHN : PC0077480

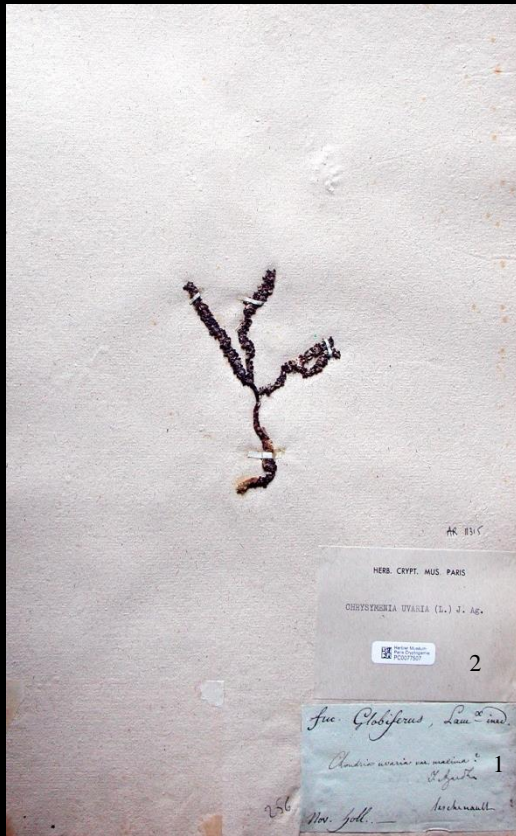


\*Unidentified *Champia*  
\*West coast

Barcode MNHN : PC0077511

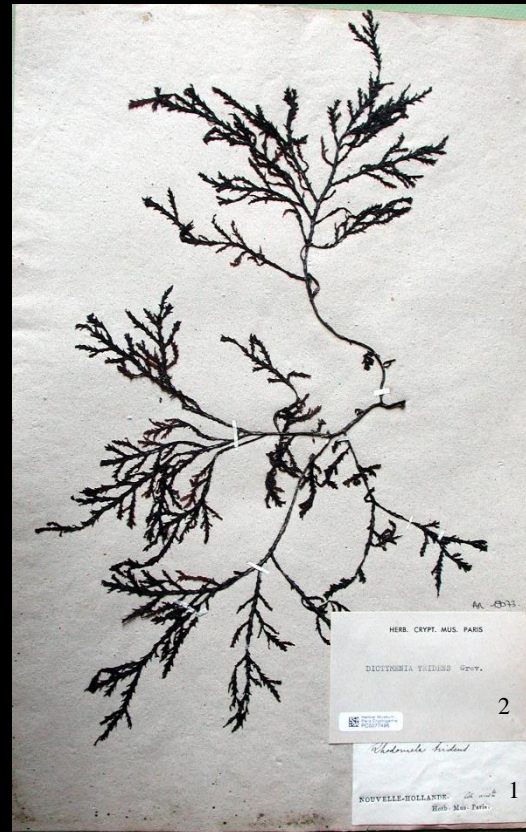


# Rhodophyceae (Rho 7-Rho 10)



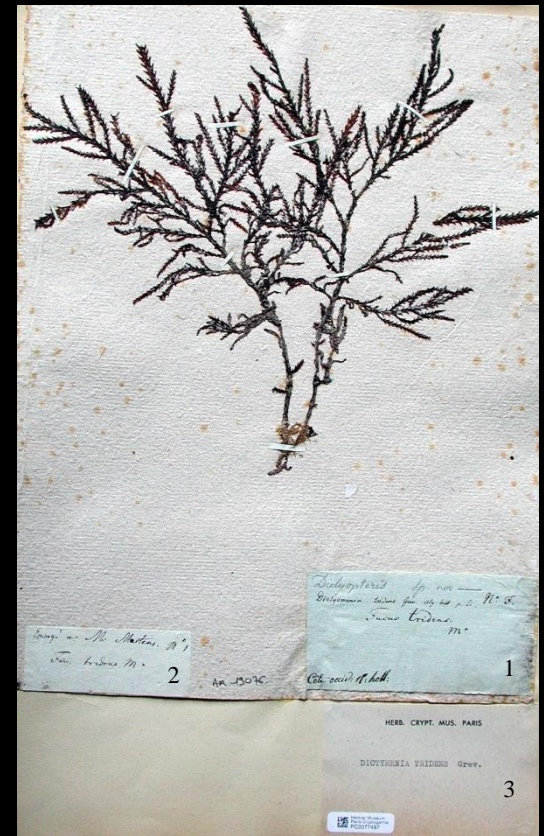
- \* *Chrysymenia uvaria*
- \*New Holland
- \*Collected by Leschenault

Barcode MNHN : PC0077507



- \**Dictyonema tridens*
- \*West coast

Barcode MNHN : PC0077496



- \**Dictyonema tridens*
- \*West coast

Barecode MNHN : PC0077497

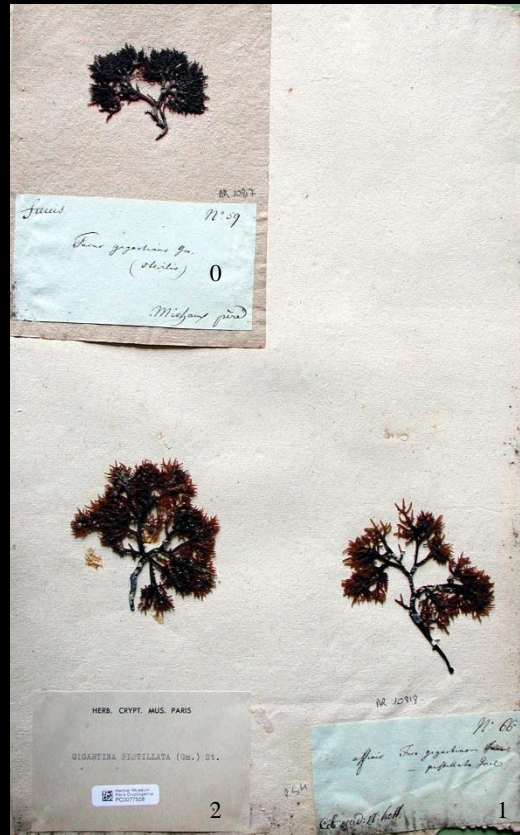


# Rhodophyceae (Rho 11-Rho 13)



- \**Gigartina livida*
- \*New Holland
- \*Collected by Leschenault

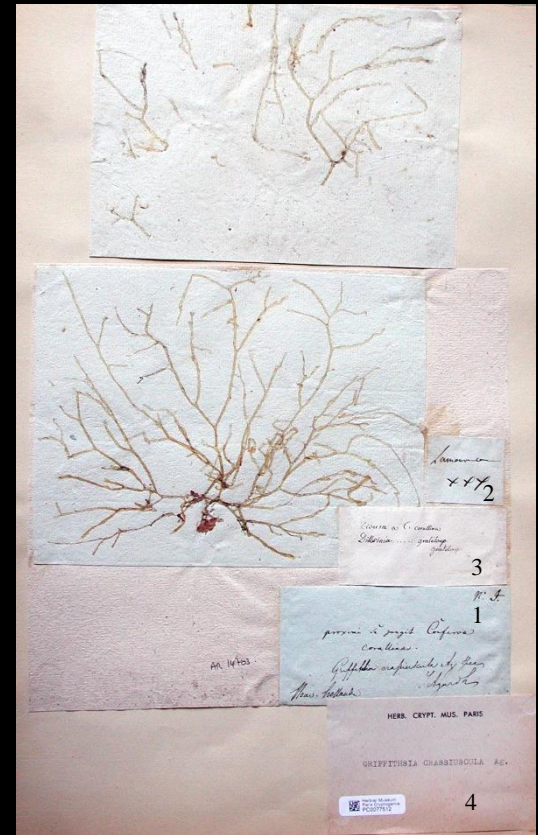
Barcode MNHN : PC0077509



- \**Gigartina pistillata*
- \*West coast

Nota : Label 0 specimen does not belong to the Baudin herbarium

Barcode MNHN : PC0077508

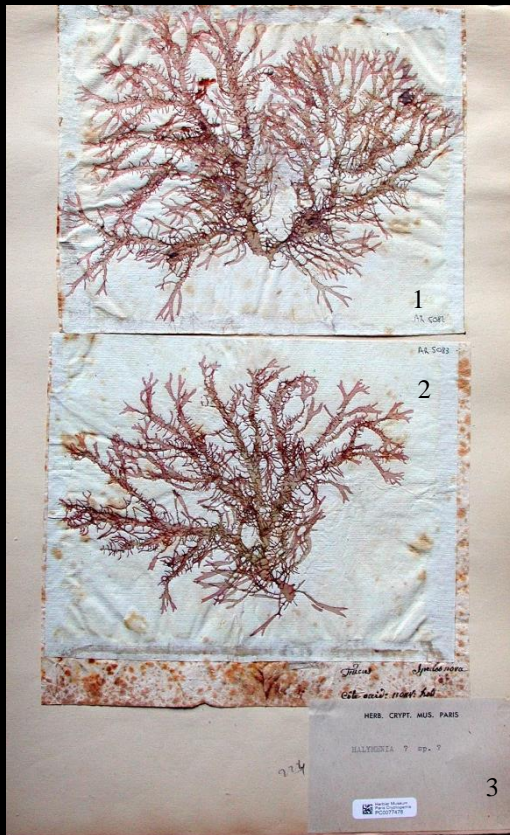


- \**Griffithsia crassiuscula*
- \*New Holland

Barcode MNHN : PC0077512



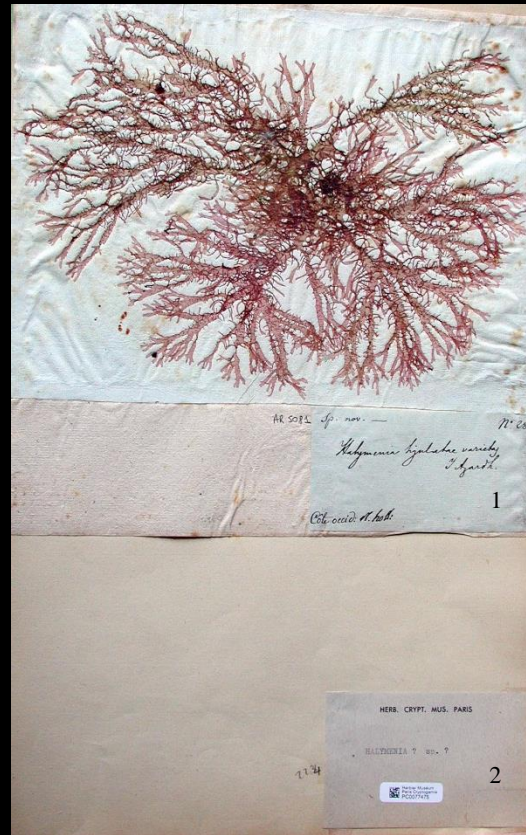
# Rhodophyceae (Rho 14-Rho 16)



\*Unidentified *Halymenia*

\*West coast

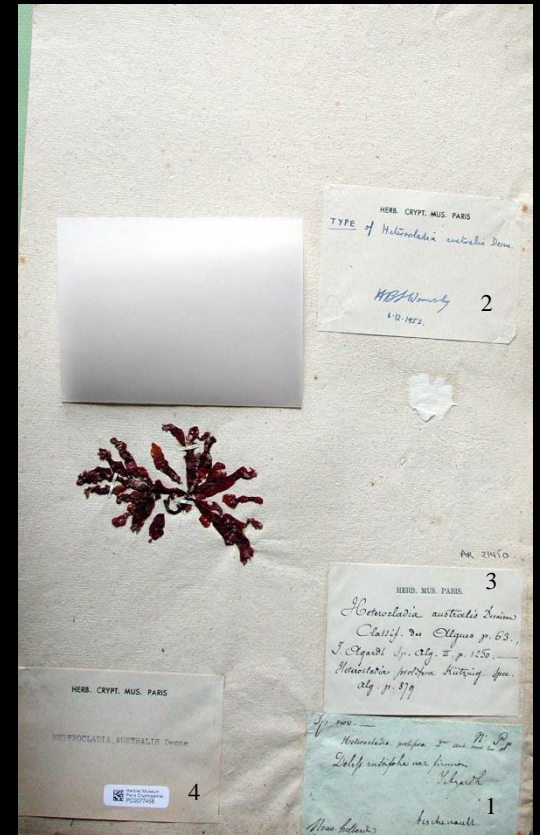
Barcode MNHN : PC0077476



\*Unidentified *Halymenia*

\*West coast

Barcode MNHN : PC0077475



TYPE

\**Heterocladia australis*

\*New Holland

\*Collected by Leschenault

Nota : Revised by Wormesley, 1952 [label 3]

Barcode MNHN : PC0077458

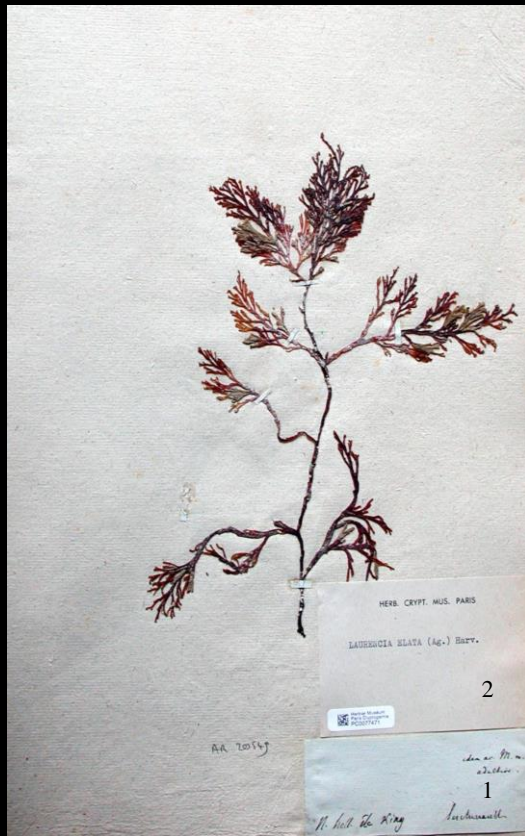


# Rhodophyceae (Rho 17-Rho 19)



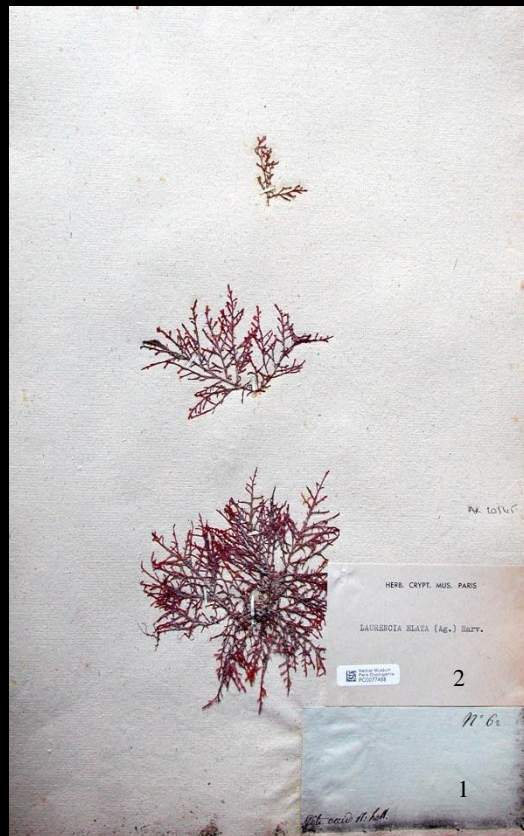
\**Hypnea episcopalis*  
\*West coast

Barcode MNHN : PC0077505



\**Laurencia elata*  
\*King Island  
\*Collected by Leschenault

Barcode MNHN : PC0077471

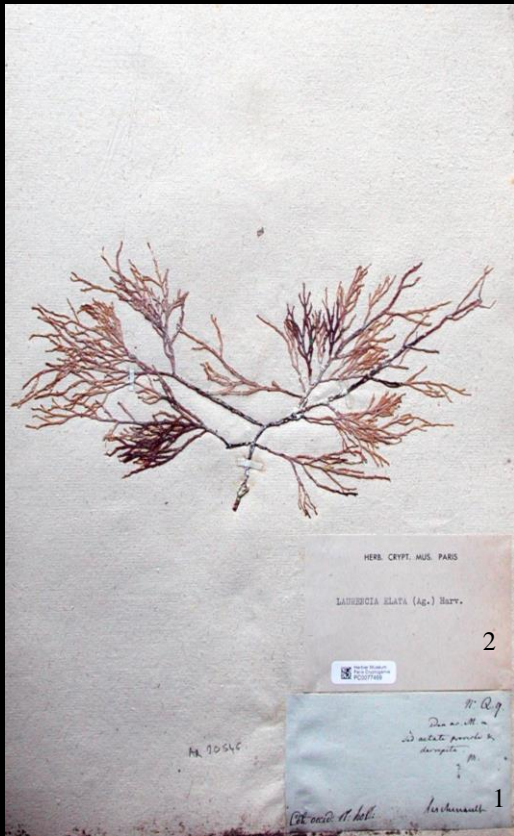


\**Laurencia elata*  
\*West coast

Barcode MNHN : PC0077468



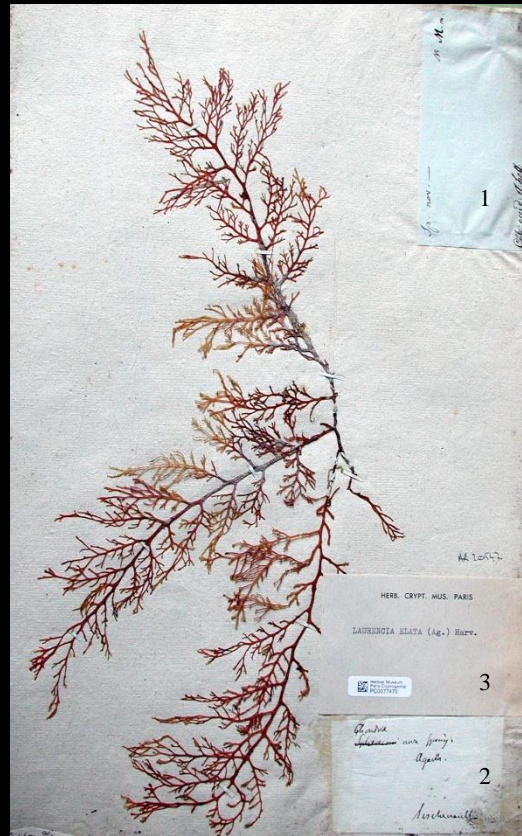
# Rhodophyceae (Rho 20-Rho 22 )



\**Laurencia elata*

\*West coast

Barcode MNHN : PC0077469

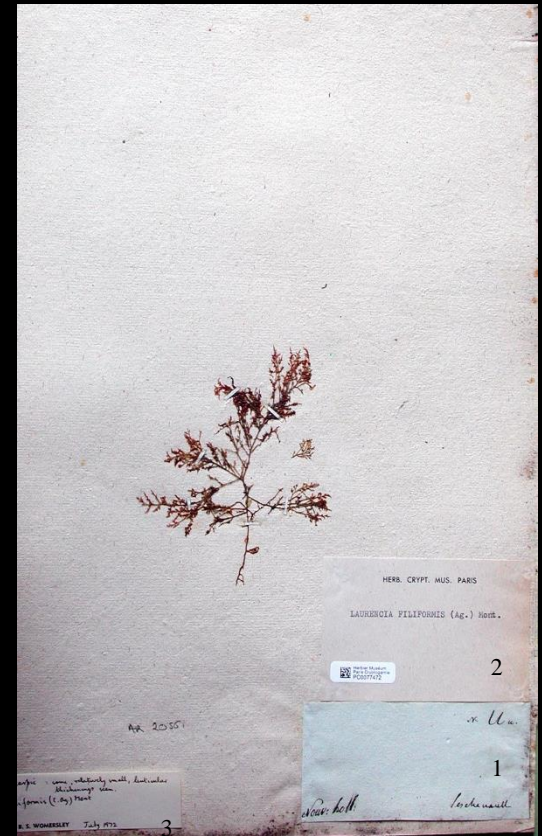


\**Laurencia elata*

\*West coast

\*Collected by Leschenault

Barcode MNHN : PC0077470



\**Laurencia filiformis*

\*New Holland

\*Collected by Leschenault

Nota : Revised by Wormesley, 1972  
[label 2]

Barcode MNHN : PC0077472





# Rhodophyceae (Rho 26-Rho 28)



TYPE  
*Merrifieldia ramentacea*  
New Holland

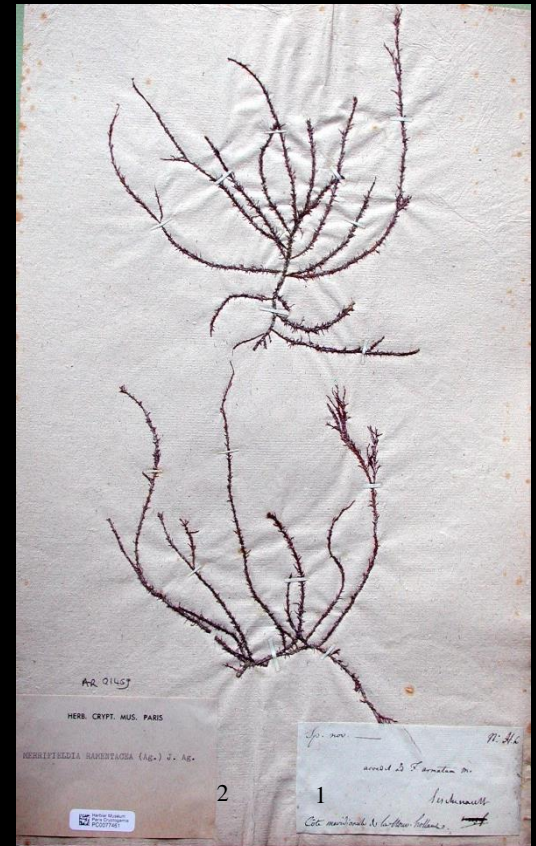
Nota : Revised by Wormesley, 1952  
(type of *Chondria ramentacea*) [label 2]

Barcode MNHN : PC0077463



\**Merrifieldia ramentacea*  
\*South coast

Barcode MNHN : PC0077462

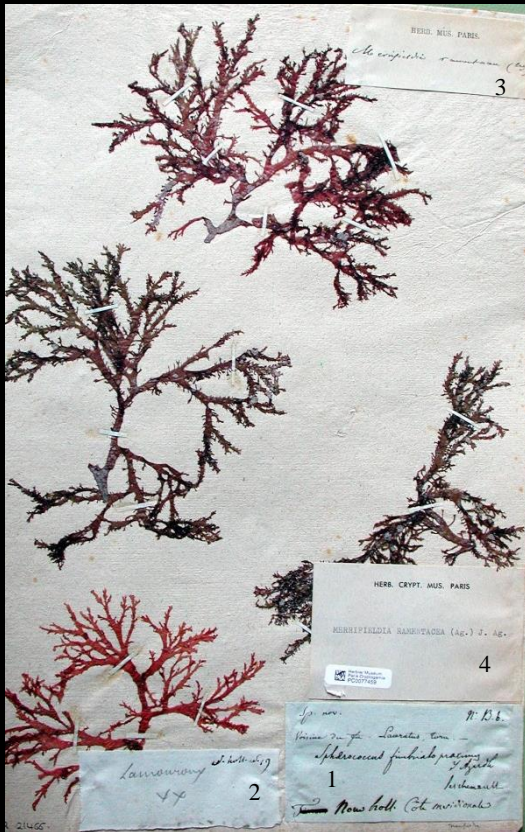


\**Merrifieldia ramentacea*  
\*South coast  
\*Collected by Leschenault

Barcode MNHN : PC0077461



# Rhodophyceae (Rho 29-Rho 31)



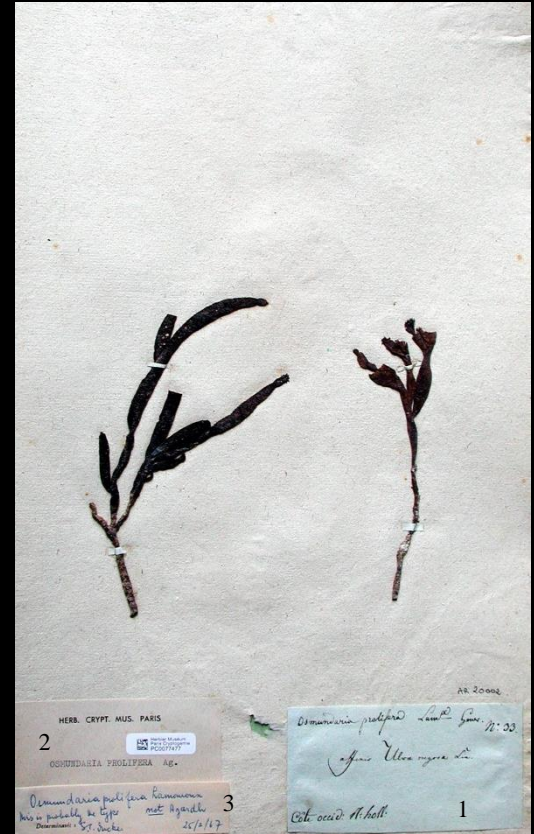
- \**Merrifieldia ramentacea*
- \*South coast
- \*Collected by Leschenault

Barcode MNHN : PC0077459



- \**Merrifieldia ramentacea*
- \*West coast
- \*Collected by Leschenault

Barcode MNHN : PC0077460



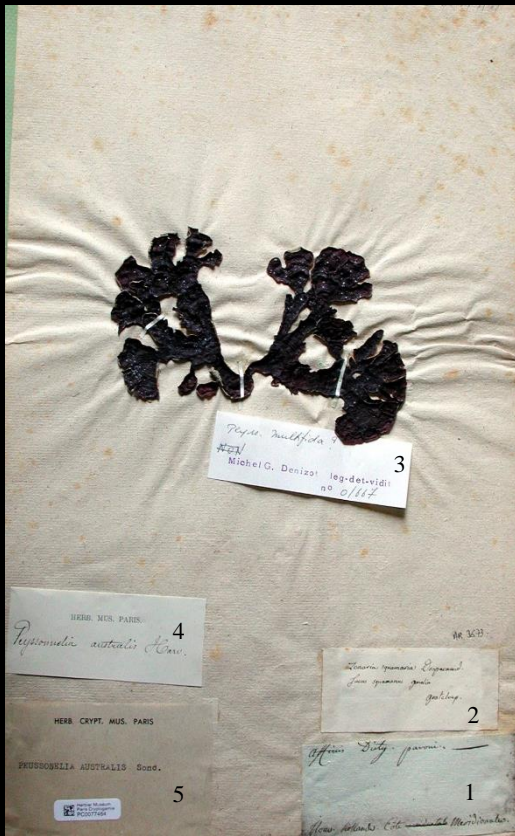
- TYPE
- \**Osmundaria prolifera*
- \*West coast

Nota : (1) Revised by Dicker, 1967 [label 3] ; (2) See also sample Rho 25

Barcode MNHN : PC0077477

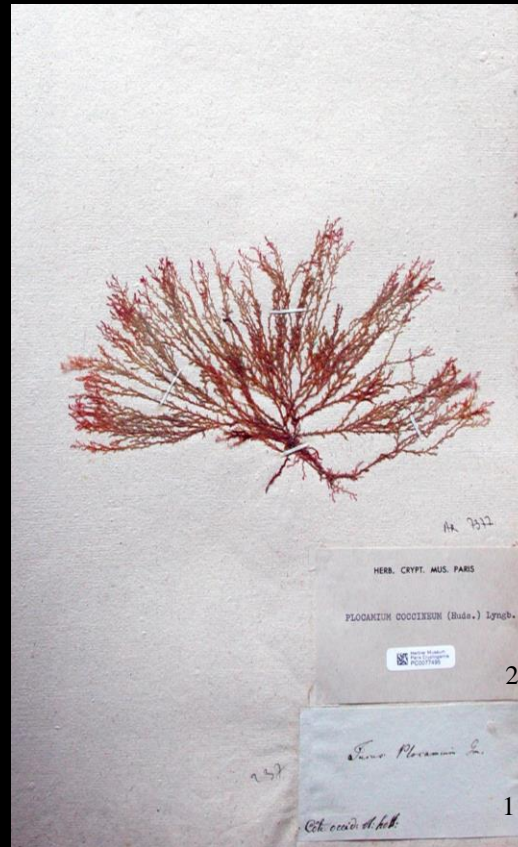


# Rhodophyceae (Rho 32-Rho 34)



\**Peyssonnelia australis*  
\*South coast

Barcode MNHN : PC0077464



\**Plocamium coccineum*  
\*West coast

Barcode MNHN : PC0077495

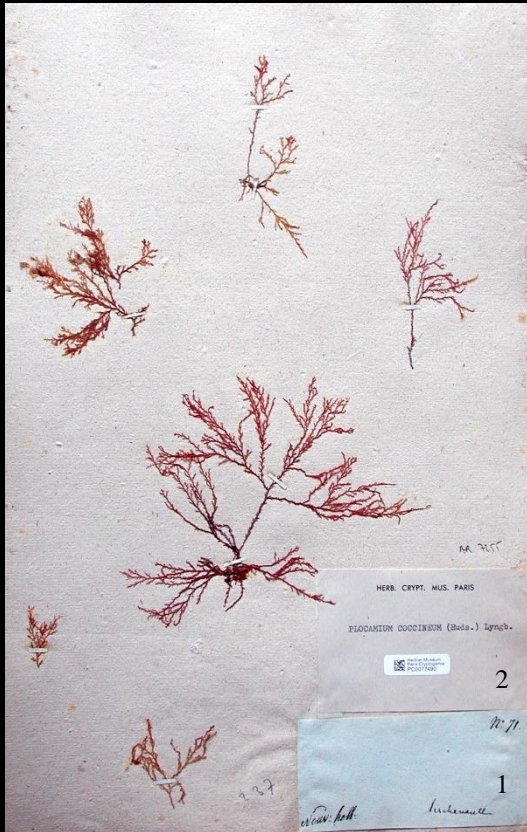


\**Plocamium coccineum*  
\*King Island

Barcode MNHN : PC0077499



# Rhodophyceae (Rho 35-Rho 37)



\**Plocamium coccineum*  
\*New Holland  
\*Collected by Leschenault

Barcode MNHN : PC0077490



\**Plocamium coccineum*  
\*West coast  
\*Collected by Leschenault

Barcode MNHN : PC0077492

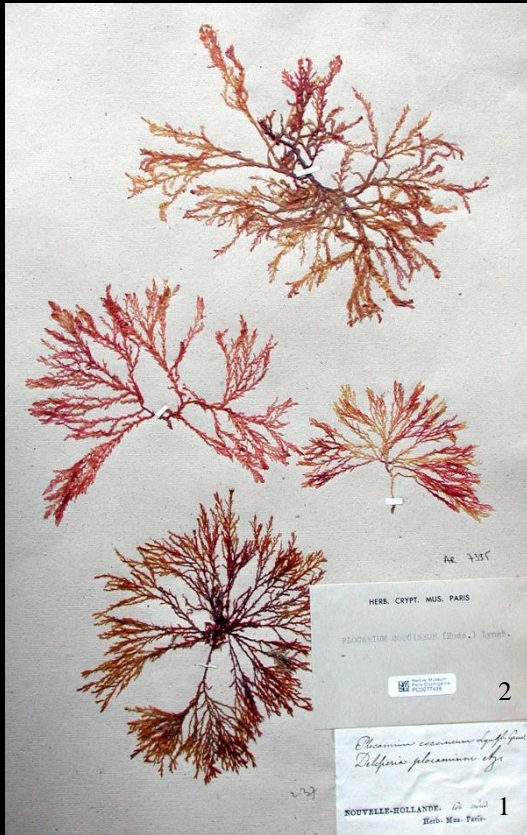


\**Plocamium coccineum*  
\*West coast  
\*Collected by Leschenault

Barcode MNHN : PC0077494



# Rhodophyceae (Rho 38-Rho 40)



\**Plocamium coccineum*  
\*South coast

Barcode MNHN : PC0077498



\**Plocamium coccineum*  
\*West coast

Barcode MNHN : PC0077500

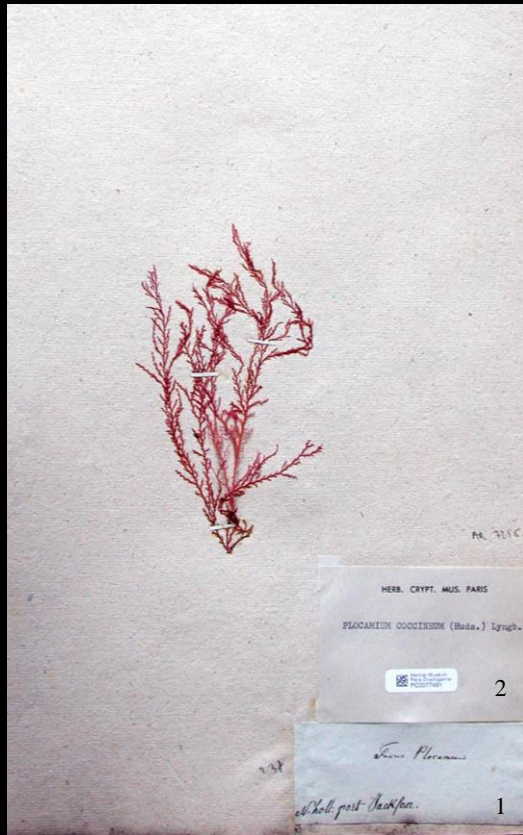


\**Plocamium coccineum*  
\*West coast

Barcode MNHN : PC0077501



# Rhodophyceae (Rho 41-Rho 43)



\**Plocamium coccineum*  
\*Port Jackson

Barecode MNHN : PC0077491



\**Plocamium coccineum*  
\*West coast

Barcode MNHN : PC0077502



\**Plocamium coccineum*  
\*West coast  
\*Collected by Leschenault

Barcode MNHN : PC0077493



# Rhodophyceae (Rho 44-Rho 46)



\**Plocamium costatum*  
\*West coast

Barcode MNHN : PC0077503



*Plocamium procerum*  
\*West coast

Barcode MNHN : PC0077487

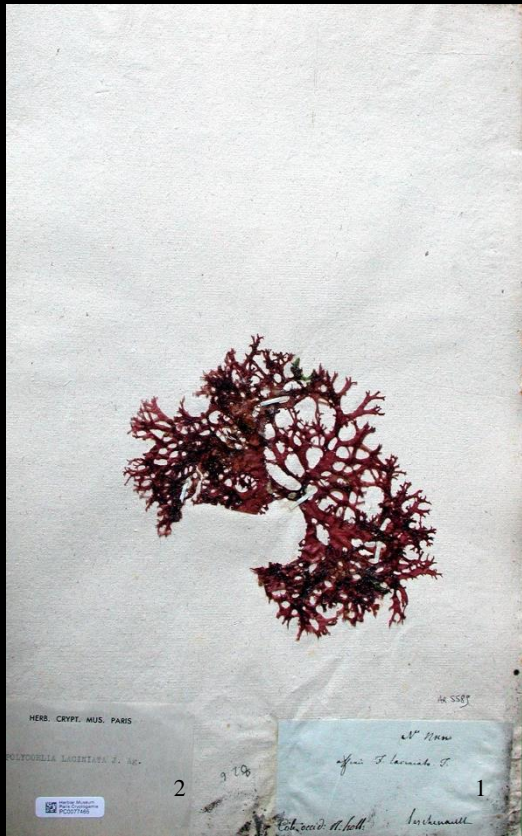


\**Plocamium procerum*  
\*West coast  
\*Collected by Leschenault

Barcode MNHN : PC0077488

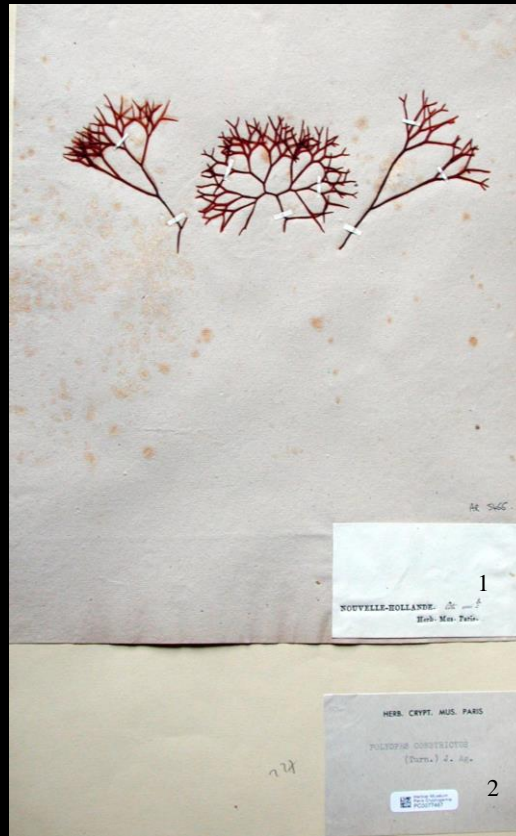


# Rhodophyceae (Rho 47-Rho 49)



- \**Polycoelia laciniata*
- \*West coast
- \*Collected by Leschenault

Barcode MNHN : PC0077465



- \**Polyopes constrictus*
- \*West coast

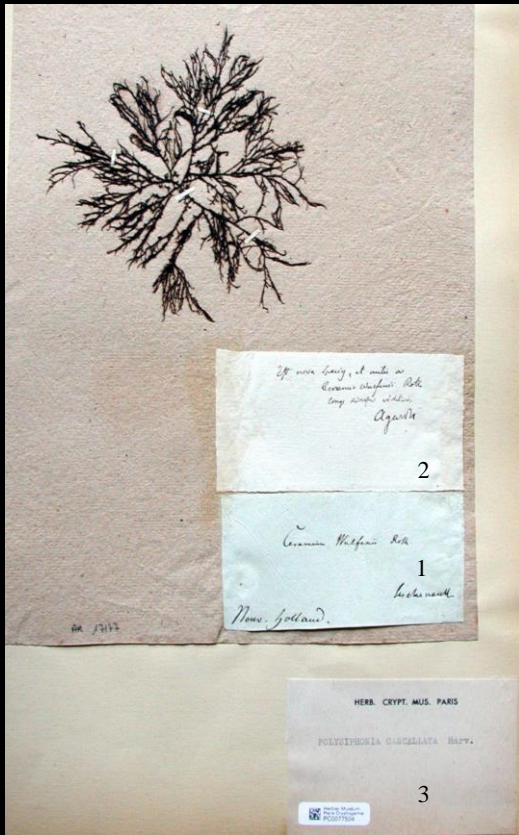
Barcode MNHN : PC0077467



- \**Polyopes constrictus*
- \*West coast
- \*Collected by Leschenault

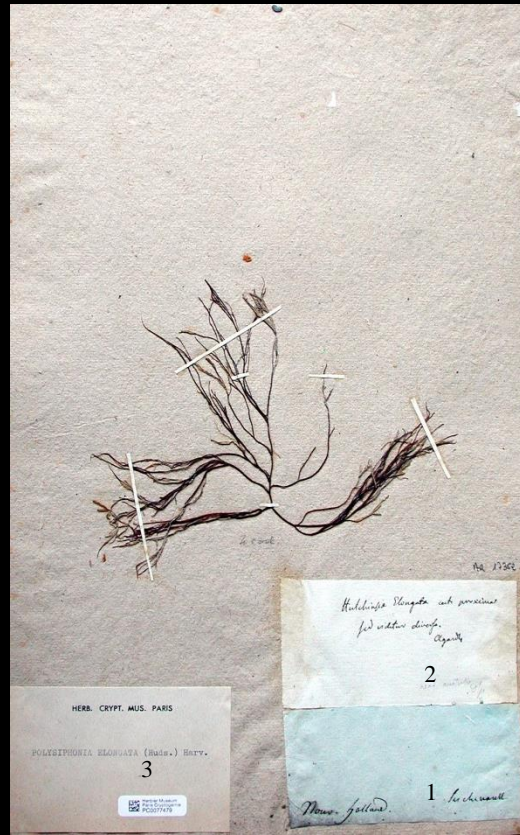
Barcode MNHN : PC0077466

# Rhodophyceae (Rho 50-Rho 52)



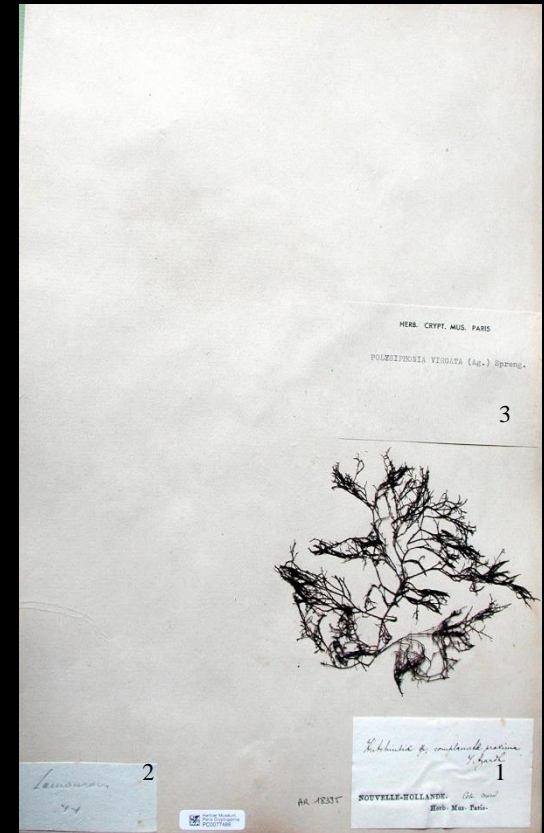
- \**Polysiphonia cancellata*
- \*New Holland
- \*Collected by Leschenault

Barcode MNHN : PC0077504



- \**Polysiphonia elongata*
- \*New Holland
- \*Collected by Leschenault

Barcode MNHN : PC0077479



- \**Polysiphonia virgata*
- \*South coast

Barcode MNHN : PC0077486



# Rhodophyceae (Rho 53-Rho 55)



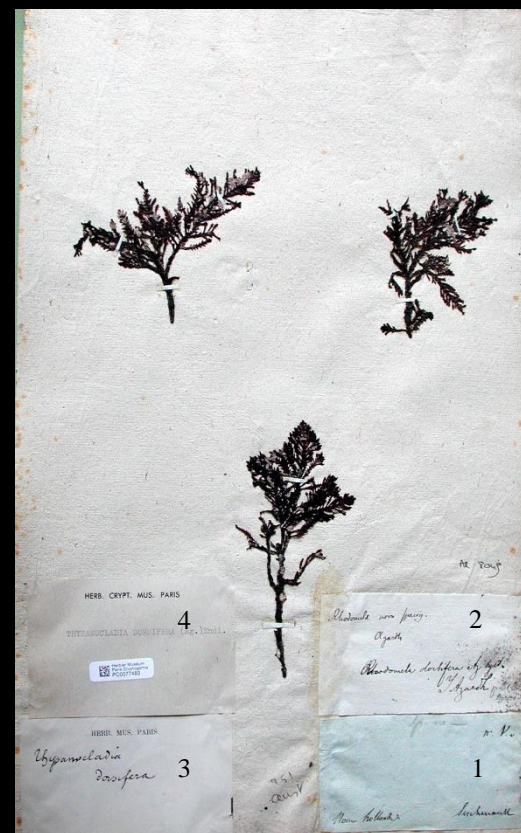
\*Near *Sphaerococcus plicatus*  
\*South coast

Barcode MNHN : PC0077455



\**Thysanocladia dorsifera*  
\*New Holland  
\*Collected by Leschenault

Barcode MNHN : PC0077482



\**Thysanocladia dorsifera*  
\*New Holland  
\*Collected by Leschenault

Barcode MNHN : PC0077483

# Rhodophyceae (Rho 56-Rho 57)



\**Thysanocladia oppositifolia*  
 \*Western Port  
 \*Collected by Leschenault

Barcode MNHN : PC0077485



\**Thysanocladia oppositifolia*  
 \*New Holland

Barcode MNHN : PC0077484