

ANGIOSPERMAE
DICOTYLEDONAE
ROSIDAE I

Anacardiaceae
to
Cunoniaceae

DICOTYLEDONAE ROSIDAE

* The Dicot (Rosidae) herbarium of the Baudin expedition contains 1,051 specimens.

* Cited collectors are Guichenot (121 reports), Leschenault (200 reports) and Riedlé (61 reports)

* Origin of each specimen is mentioned. These places are : Port Jackson (232 reports), Timor (231 reports), King George Sound (118 reports), d'Entrecasteaux Channel (89 reports), west coast (81 reports), east coast (48 reports), New Holland (41 reports), south coast (30 reports), Kangaroo Island (29 reports), Geographe Bay (22 reports), King Island (21 reports), Barren Islands (17 reports), Hawkesbury (16 reports), Blue Mountains (14 reports), Maria Island (12 reports), Depuch Island (11 reports), Parramatta (8 reports), Shark Bay (8 reports), St Francis Island (7 reports), Swan River (6 reports), Van Diemen's land (5 reports), Franklin Island (3 reports), Bass Strait (2 reports).

Each plant specimen has been photographed. Information provided for each specimen consists of : the plant name (i.e. most recent name according to labels), the geographical origin, the name of the collector (when possible), additional relevant information (under the heading 'Nota'), the specimens's reference number (barcode) assigned by the Paris Museum of Natural History (MNHN collection).

The collected specimens belong to 41 distinct families that were grouped into 14 digital herbaria (H17 to H30).

Families are presented in alphabetical order.

-H17 herbarium includes families Anacardiaceae (Ana), Apiaceae (Api), Araliaceae (Ara), Avertroaceae (Ave), Baueraceae (Bau), Celastraceae (Cel), Chrysobalanaceae (Chr), Combretaceae (Com), Crassulaceae (Cra), Cunionaceae (Cun)

-H18 herbarium includes families Euphorbiaceae (Eup), Geraniaceae (Ger), Haloragaceae (Hal)

-H19 herbarium includes families Hydrocotylaceae (Hyd), Leeaceae (Lee), Leguminosae part 1 (Leg)

-H20 herbarium includes family Leguminosae part 2 (Leg)

-H21 herbarium includes family Leguminosae part 3 (Leg)

-H22 herbarium includes families Leguminosae part 4 (Leg), Loranthaceae (Lor), Lythraceae (Lyt), Malpighiaceae (Mal), Meliaceae (Mel),

Myrtaceae part1 (Myr)

-H23 herbarium includes family Myrtaceae part 2 (Myr)

- H24 herbarium includes families Myrtaceae part 3 (Myr), Onagraceae (Ona), Oxalidaceae (Oxa), Phyllanthaceae (Phy), Pittosporaceae part 1 (Pit)
- H25 herbarium includes families Pittosporaceae part 2 (Pit), Podostemaceae (Pod), Proteaceae part 1 (Pro)
- H26 herbarium includes family Proteaceae part 2 (Pro)
- H27 herbarium includes family Proteaceae part 3 (Pro)
- H28 herbarium includes families Proteaceae part 4 (Pro), Rhamnaceae (Rha), Rhizophorideae (Rhi), Rosaceae (Ros), Rutaceae part 1 (Rut)
- H29 herbarium includes families Rutaceae part 2 (Rut), Sapindaceae (Sap), Simaroubaceae (Sim), Sonneratiaceae (Son), Stilaginaceae (Sti), Stylobasaceae (Sty)
- H30 herbarium includes families Suraniaceae (Sur), Thymeleaceae (Thy), Tremandraceae (Tre), Vitaceae (Vit), Zygophyllaceae (Zyg)

Identified and unidentified specimens are left in the family to which they were assigned in the Paris herbarium. Species in each genus and genera in each family are sorted alphabetically. An index of genus names is given for all families.

*Occurrence of type materials :

H17 : *Mangifera timoriensis* (Ana 21 & 22), *Canarium oleosum* (Bur 1 & 2), *Loeseneriella pauciflora* (Cel 1), *Salacia chinensis* (Cel 2)

H18 : *Amperea ericoides* (Eup 12), *Bridelia ovata* (Eup 25, 26 & 27), *Euphorbia browni* (Eup 32), *Gonocarpus micranthus* ssp *micranthus* (Hal 4)

H19: *Xanthosia tridentata* (Hyd 26)

H20 : *Acacia pyrifolia* (Leg 65 & 66), *Albizia lebbekioides* (Leg 90), *Bauhinia viridescens* (Leg 95), *Caesalpinia pubescens* (Leg 105)

H21 : *Cassia glutinosa* (Leg 119)

H22 : *Amyema leschenaulti* (Lor 1), *Ammania microcarpa* (Lyt 2, 3 & 4), *Aglaia elaeognoides* (Mel 1), *Munronia timoriensis* (Mel 14)

H25 : *Adenathos obovatus* (Pro 3)

INDEX OF GENERA (ROSIDAE)

Acacia	H19 Leg 1-34 H19 Leg 35-87	Baeckia	H22 Myr 7-12	Christia	H21 Leg 129
Acaena	H28 Ros 1-5	Banksia	H25 Pro 9-32	Citrus	H28 Rut 21-23
Acalypha	H18 Eup 1-3	Bauera	H17 Bau 1-5	Clausena	H28 Rut 24-25
Actinotus	H19 Hyd 1-7	Bauerella	H28 Rut 2	Clitoria	H21 Leg 130
Adenanthos	H25 Pro 1-8	Bauhinia	H18 Leg 92-97	Codiaeum	H18 Eup 28-30
Adriana	H18 Eup 4-9	Beaufortia	H22 Myr 13	Colubrina	H28 Rha 3-4
Aglaia	H22 Mel 1	Beyeria	H18 Eup 19-23	Conospermum	H25 Pod 1
Agonis	H22 Myr 1-4	Billardiera	H24 Pit 1-17	Correa	H29 Rut 26-35
Albizia	H20 Leg 88-90	Boronia	H28 Rut 3-19	Crotalaria	H21 Leg 131-137
Aleurites	H18 Eup 10-11	Bossiaea	H20 Leg 98-101	Crowea	H29 Rut 36-37
Allophylus	H29 Sap 1-2	Bridelia	H18 Eup 24-27	Cryptandra	H28 Rha 5-10
Alphitonia	H28 Rha 1	Bursaria	H25 Pit 18-28	Cryptocaria	H25 Pod 1
Amemya	H22 Lor 1-2	Caesalpina	H20 Leg 102-109	Dalbergia	H21 Leg 138-139
Ammannia	H22 Lyt 1-4	Callicoma	H17 Cun 1-4	Darwinia	H22 Myr 26-31
Ampelocissus	H30 Vit 1-2	Callistachys	H21 Leg 110-112	Daucus	H17 Api 2
Ampera	H18 Eup 12-15	Callistemon	H22 Myr 14-21	Daviesia	H21 Leg 140
Amylothea	H22 Lor 3-5	Calythrix	H22 Myr 22-25	Diplolaena	H29 Rut 38-45
Andrachne	H18 Eup 16-18	Canarium	H17 Bur 1-2	Dodonea	H17 Ana 1-20
Anethum	H17 Api 1	Canavalia	H21 Leg 113-115	Dolichos	H21 Leg 141
Antidesma	H29 Sti 1-2	Cassia	H21 Leg 116-120	Dryandra	H26 Pro 47-56
Aphanamixis	H22 Mel 2-6	Cathormium	H21 Leg 121-122		
Archidendron	H20 Leg 91	Ceanothus	H28 Rha 2	Epicharis	H22 Mel 7-11
Astartea	H22 Myr 5-6	Ceratopetalum	H17 Cun 5-6	Epilobium	H24 Ona 1-9
Astrotricha	H17 Ara 1-6	Ceriops	H28 Rhi 1-3	Eriostemum	H29 Rut 46-49
Atalanta	H28 Rut 1	Chaemocrista	H21 Leg 123	Erodium	H18 Ger 1
Atalaya	H29 Sap 3-4	Chalcas	H28 Rhi 1-3	Eucalyptus	H23 Myr 32-73
Averrhoa	H17 Ave 1-3	Chorizema	H21 Leg 124-128	Euphorbia	H18 Eup 31-42

INDEX OF GENERA (ROSIDAE) continued

Exocoecaria	H18 Eup 44-46	Leptospermum	H23 Myr 88-104	Pittosporum	H25 Pit 33-50
		Loeseneriella	H17 Cel 1	Platysace	H19 Hyd 8
Flemingia	H21 Leg 142-143			Podolobium	H21 Leg 182-184
Franklandia	H26 Pro 57-60	Macaranga	H17 Eup 47-51	Pomaderis	H28 Rha 11-27
		Mallotus	H18 Eup 52-56	Pongamia	H21 Leg 185-186
Geranium	H18 Ger 2-4	Mangifera	H17 Ana 21-22	Poranthera	H24 Phy 10-12
Glochidion	H24 Phy 1-2	Manihot	H18 Eup 57	Prunus	H28 Ros 6-8
Gompholobium	H21 Leg 144-147	Marianthus	H25 Pit 33-50	Pseudarthria	H21 Leg 187-188
Gonocarpus	H18 Hal 1-7	Melaleuca	H23 Myr 105-114	Pueraria	H21 Leg 189
Grangeria	H17 Chr 1		H24 Myr 115-122	Pultenea	H21 Leg 190-191
Grevillea	H26 Pro 61-86	Micromyrtus	H24 Myr 123-125		
		Mirbelia	H21 Leg 169-172	Rhadinothamnus	H29 Rut 65-67
Hakea	H26 Pro 87-116	Mucuna	H21 Leg 168	Rhynchosia	H22 Leg 192-194
	H27 Pro 117-122	Munronia	H22 Mel 12-15	Ricinocarpus	H18 Eup 58-59
Harmogia	H23 Myr 74-76			Ryssopteris	H22 Mel 1-2
Harrisonia	H29 Sim 1-5	Oxalis	H24 Oxa 1-4		
Heterodendron	H29 Sap 5-7	Oxylobium	H21 Leg 173-177	Salacia	H17 Cel 2-3
Homalanthus	H18 Eup 44-46			Schleichera	H29 Sap 15-18
Hypocalymna	H29 Sim 1-5	Pararchidendron	H21 Leg 178	Senna	H22 Leg 195-199
		Pelargonium	H18 Ger 5-9	Sesbania	H22 Leg 200-203
Indigofera	H21 Leg 148-158	Peltophorum	H21 Leg 179-181	Sollya	H25 Pit 51-52
Isopogon	H27 Pro 123-140	Pemphis	H22 Lyt 5-6	Sonneratia	H29 Son 1-2
Jacksonia	H21 Leg 159-167	Persoonia	H27 Pro 144-175	Spondias	H17 Ana 23-24
		Petrophile	H27 Pro 176-190	Stylobasium	H29 Sty 1-3
Kunzea	H23 Myr 78-87	Phebalium	H29 Rut 60-62	Stylosanthes	H22 Leg 204
		Philotheca	H29 Rut 63-64	Surania	H30 Sur 1-2
Lambertia	H27 Pro 141-143	Phyllanthus	H24 Phy 3-9		
Leea	H19 Lee 1-5	Pileanthus	H24 Myr 126-132		
Lepisanthes	H29 Sap 8-14	Pimelea	H30 Thy 1-23		

INDEX OF GENERA (ROSIDAE) continued

Synaptea	H27 Pro 194-196
Synoum	H22 Mel 16-17
Syzygium	H24 Myr 133-139
Tadehagi	H22 Leg 205-206
Taxandra	H24 Myr 140-141
Telopea	H28 Pro 197-200
Tephrosia	H22 Leg 207-209
Terminalia	H17 Chr 2-9
Tetratheca	H30 Tre 1-10
Tillaea	H17 Cra 1-2
Trachymene	H19 Hyd 9-18
Tremandra	H30 Tre 11-12
Tribulus	H30 Zyg 1
Tristaniopsis	H22 Myr 142
Tryptomene	H22 Myr 143-147
Tymalium	H28 Rha 28-29
Verticordia	H24 Myr 148-149
Woodfortia	H22 Lyt 7
Xanthosia	H19 Hyd 19-26
Xylomelum	H28 Pro 201-204
Ziziphus	H28 Rha 30-38
Ziera	H29 Rut 68-73
Zygophyllum	H30 Zyg 2

Angiospermae Dicotyledonae Rosidae I
Anacardiaceae (Ana 1-Ana 3)



**Dodonaea burmanniana*
*Timor
*Collected by Riedlé

Barcode MNHN : P00337524



**Dodonaea bursariifolia*
*West coast

Nota : Revised by West, 1981 [label 2]

Barcode MNHN : P00337526



**Dodonaea bursariifolia*
*Geographe Bay

Nota : Revised by West, 1980 [label 2]

Barcode MNHN : P00337527

Angiospermae Dicotyledonae Rosidae I
Anacardiaceae (Ana 4-Ana 6)



**Dodonaea bursariifolia*

*Geographe Bay

Nota : Revised by West, 1980 [label 3]

Barcode MNHN : P00337528

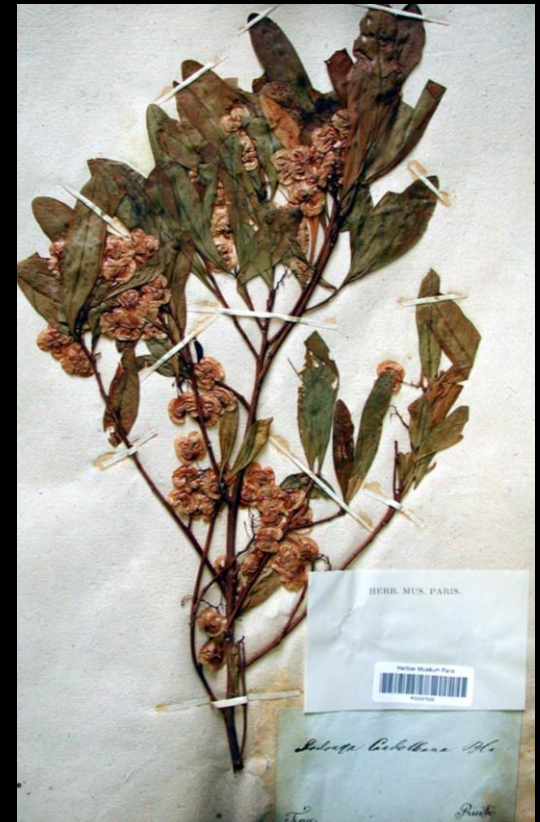


**Dodonaea candolleana*

*Timor

Nota : Seed bag [label 2]

Barcode MNHN : P00337523



**Dodonaea candolleana*

*Timor

*Collected by Riedlé

Barcode MNHN : P00337522

Angiospermae Dicotyledonae Rosidae I
Anacardiaceae (Ana 7-Ana 9)



**Dodonaea ceratocarpa*
*Barren Islands

Nota : Revised by West, 1981 [label 3]

Barcode MNHN : P00337529



**Dodonaea ceratocarpa*
*Barren Islands

Nota : Revised by West, 1981 [label 3]

Barcode MNHN : P00337530



**Dodonaea ceratocarpa*
*Geographe Bay

Nota : Revised by West, 1981 [label 3]

Barcode MNHN : P00337531

Angiospermae Dicotyledonae Rosidae I
Anacardiaceae (Ana 10-Ana 12)



**Dodonaea ceratocarpa*
*King George Sound
*Collected by Leschenault

Nota : (1) In Leschenault's hand
« *Dodonaea tetraolata* ; port du roi
george 3 ; N°20 » [label 1] ; (2)
Revised by West, 1981 [label 3]

Barcode MNHN : P00337532



**Dodonaea ceratocarpa*
*King George Sound
*Collected by Leschenault

Nota : (1) In Leschenault's hand
« *dodonaea ? tetraolata* ; Port du roi
george 3 ; N°20 » [label 2] ; (2)
Revised by West, 1981 [label 4]

Barcode MNHN : P00337533



**Dodonaea ceratocarpa*
*Port Jackson (?)

Nota : Revised by West, 1981 [label
2]

Barcode MNHN : P00337534

Angiospermae Dicotyledonae Rosidae I
Anacardiaceae (Ana 13-Ana 15)



**Dodonaea triquetra*
*d'Entrecasteaux Channel

Nota : Revised by West, 1980 [label 3]

Barcode MNHN : P00337535



**Dodonaea triquetra*
*Port Jackson

Nota : Revised by West, 1980 [label 3]

Barcode MNHN : P00337536



**Dodonaea viscosa* ssp. *spatulata*
*d'Entrecasteaux Channel
*Collected by Leschenault

Nota : (1) In Leschenault's hand
« *Dodonaea viscosa* ; N°40 ; detroit
d'entrecasteaux » [label 1] ; (2)
Revised by West, 1988 [label 3]

Barcode MNHN : P00337517

Angiospermae Dicotyledonae Rosidae I

Anacardiaceae (Ana 16-Ana 17)



- **Dodonaea viscosa* ssp *spatulata*
- *d'Entrecasteaux Channel
- *Collected by Guichenot

Nota : (1) In Guichenot's hand, see opposite [label 2] ; (2) Revised by West, 1988 [label 4]

Barcode MNHN : P00337518

Dodonaea viscosa ssp *spatulata*

Guichenot's text

Original. arbrisaux sélevant de 4 et 5 piest de tairre la feuille et estraimant glutineuse cette arbrisaus croix sur laiest montagne terrin aride rée couttée aux dé troix dandrée castaux

Français. Arbrisseau s'élevant de 4 à 5 pieds de terre. La feuille est extrêmement glutineuse. Cet arbrisseau croît sur les montagnes [sur] un terrain aride.

Récolté au détroit d'Entrecasteaux.

English. Shrub reaching 4 to 5 feet in height. The leaf is extremely sticky. This shrub grows on mountains and on barren ground.

Collected in the d'Entrecasteaux Channel.



- **Dodonaea viscosa* ssp *spatulata*
- (left) and ssp *angustissima* (right)
- *Kangaroo Island
- *Collected by Leschenault

Nota : (1) In Leschenault's hand « dodonea bracteata ; décrite N°5 ; île du kangourou » [label 1] ; (2) Revised by West, 1988 [labels 3 & 4]

Barcode MNHN : P00337519

Angiospermae Dicotyledonae Rosidae
Anacardiaceae (Ana 18-Ana 20)



**Dodonaea viscosa* ssp *spatulata*
*Kangaroo Island

Nota : Revised by West, 1988 [label 2]

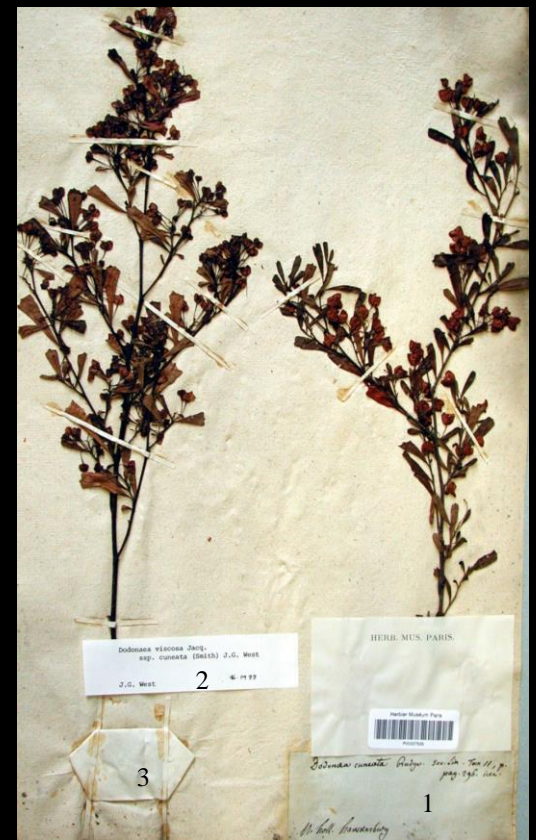
Barcode MNHN : P00337520



**Dodonaea viscosa* ssp *spatulata*
*Kangaroo Island

Nota : Revised by West, 1988 [label 2]

Barcode MNHN : P00337521



**Dodonaea viscosa* ssp *spatulata*
*Hawkesbury

Nota : (1) Revised by West, 1988 [label 2] ; (2) Seed bag [label 3]

Barcode MNHN : P00337525

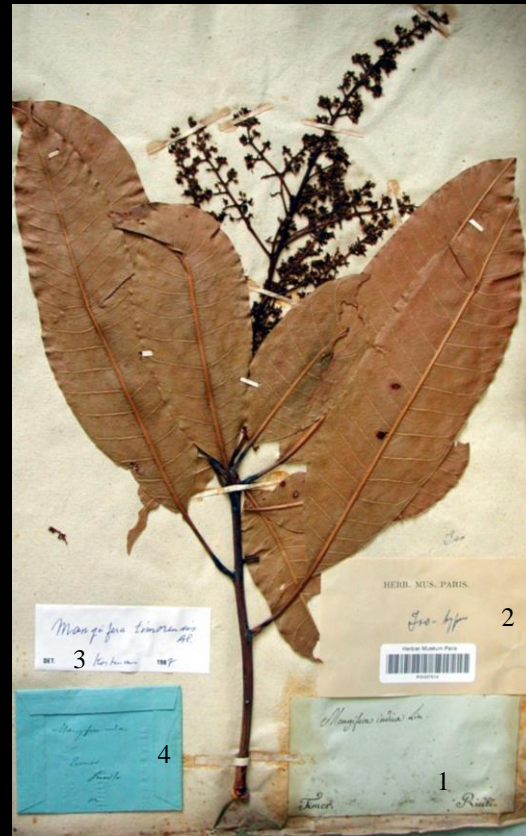
Angiospermae Dicotyledonae Rosidae
Anacardiaceae (Ana 21-Ana 23)



TYPE
**Mangifera timorensis*
*Timor
*Collected by Riedlé

Nota : Revised by Kostermans, 1887
(isotype) [label 2]

Barcode MNHN : P00337513



TYPE
**Mangifera timorensis*
*Timor
*Collected by Riedlé

Nota : (1) Revised by Kostermans, 1887
(isotype) [label 3] ; (2) Seed bag [label 4]

Barcode MNHN : P00337514



**Spondias pinnata*
*Timor
*Collected by Riedlé

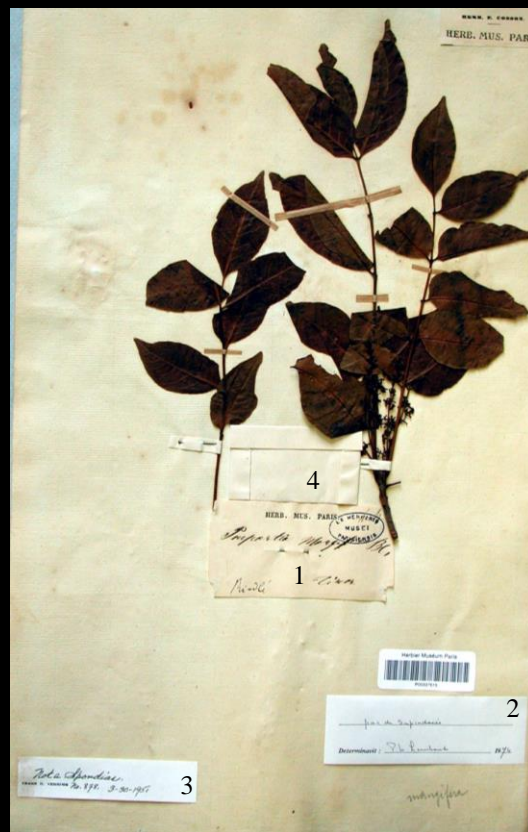
Barcode MNHN : P00337511

Angiospermae Dicotyledonae Rosidae
Anacardiaceae (Ana 24-Ana 26)



- **Spondias pinnata*
- *Timor
- *Collected by Riedlé

Barcode MNHN : P00337512



- *Unidentified Anacardiaceae
- *Timor
- *Collected by Riedlé

Nota : (1) Not a *Spondias*, Venning, 1951 [label 3] ; (2) Seed bag [label 4]

Barcode MNHN : P00337515



- *Unidentified Anacardiaceae
- *Timor
- *Collected by Riedlé

Nota : Not a *Spondias*, Venning, 1951 [label 2]

Barcode MNHN : P00337516

Angiospermae Dicotyledonae Rosidae
Apiaceae (Api 1-Api 2)



**Anethum graveolens*
*Timor

Barcode MNHN : P00291870



**Daucus carota*
*Timor

Barcode MNHN : P00291869

Araliaceae (Ara 1)



**Astrotricha floccosa*
*South coast

Nota : Revised by Makinson, 1996 [label, 2]

Barcode MNHN : P00291863

Angiospermae Dicotyledonae Rosidae
 Araliaceae (Ara 2-Ara 4)



**Astrotricha floccosa*
 *New Holland
 *Collected by Leschenault

Nota : Revised by Makinson, 1996 [label
 4]

Barcode MNHN : P00291864



**Astrotricha floccosa*
 *East coast

Nota : Revised by Makinson, 1996 [label,
 2]

Barcode MNHN : P00291865



**Astrotricha floccosa*
 *East coast

Nota : Revised by Makinson, 1996
 [label, 2]

Barcode MNHN : P00291866

Angiospermae Dicotyledonae Rosidae
Araliaceae (Ara 5-Ara 6)



**Astrotricha floccosa*
*Port Jackson

Nota : Revised by Makinson, 1996 [label 2]

Barcode MNHN : P00291867

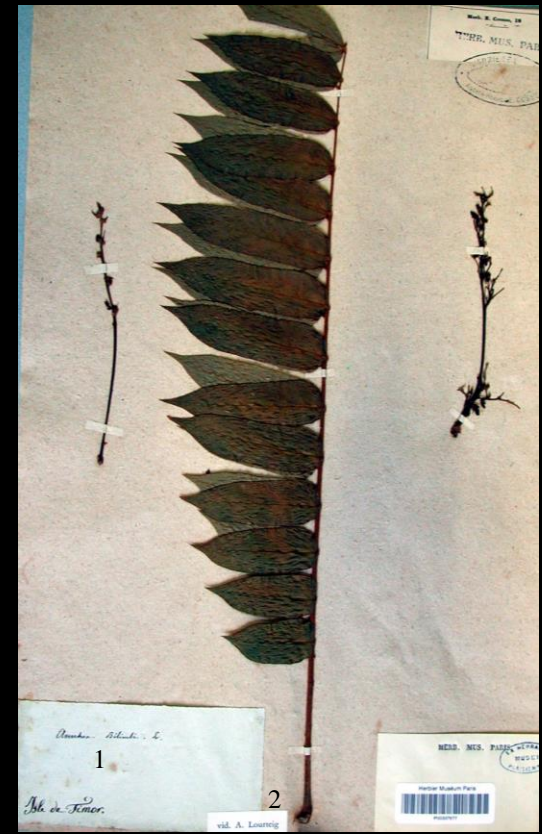


**Astrotricha floccosa*
*East coast

Nota : Revised by Makinson, 1996 [label 2]

Barcode MNHN : P00291868

Averrhoaceae (Ave 1)



**Averrhoa bilimbi*
*Timor

Nota : Revised by Lourteig, 1979 [label 2]

Barcode MNHN : P00337677

Angiospermae Dicotyledonae Rosidae
Averrhoaceae (Ave 2-Ave 3)



**Averrhoa carambola*
*Timor

Nota : Revised by Lourteig, 1979
[label 3]

Barcode MNHN : P00337678



**Averrhoa carambola*
*Timor

Nota : Revised by Lourteig, 1979
[label 2]

Barcode MNHN : P00337879

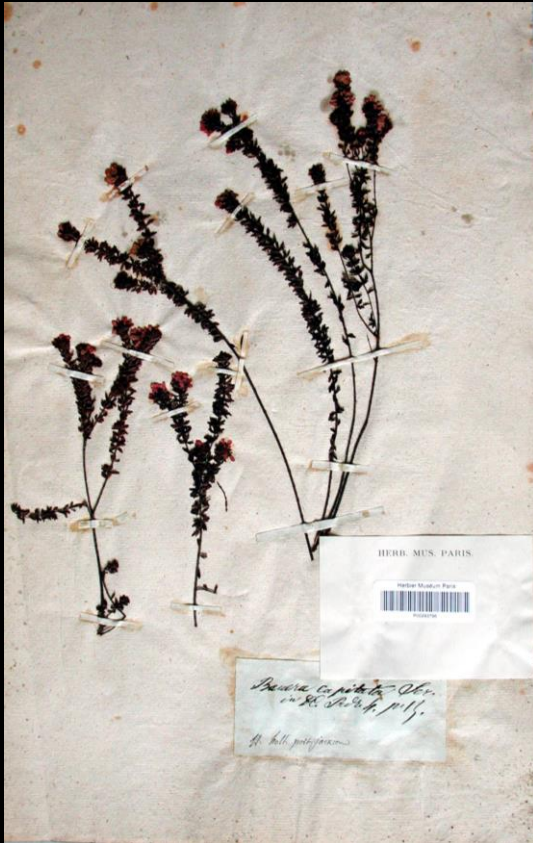
Baueraceae (Bau 1)



**Bauera capitata*
*Port Jackson

Barcode MNHN : P00293795

Angiospermae Dicotyledonae Rosidae
Baueraceae (Bau 2-Bau 3)



**Bauera capitata*
*Port Jackson

Barcode MNHN : P00293796



**Bauera rubioides*
*Port Jackson

Nota : In Guichenot's hand, see
opposite [label 1]

Barcode MNHN : P00293797

Bauera rubioides

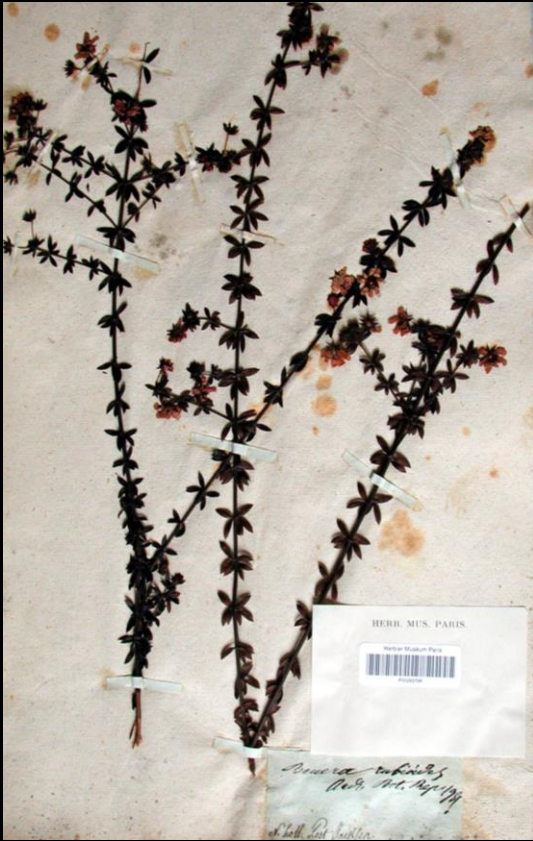
Guichenot's text

Original. Plante fourre geûtée à
fleur rauze cette plante croix sut
laiest endroix umide
Rée caultée aux paurre gassionne

Français. Plante fourchetée à fleurs
roses. Cette plante croît dans les
endroits humides.
Récoltée au Port Jackson.

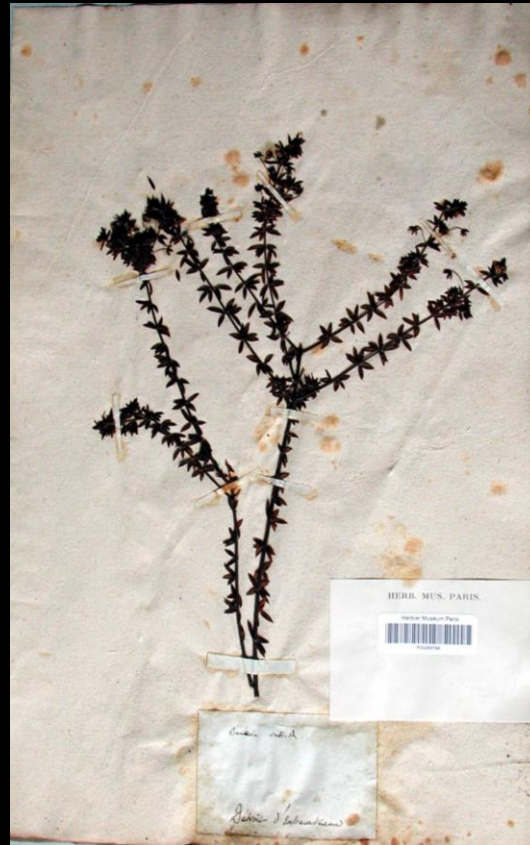
English. Branching plant with pink
flowers. This plant grows in damp
places.
Collected in Port Jackson

Angiospermae Dicotyledonae Rosidae
Baueraceae (Bau 4-Bau 6)



**Bauera rubioides*
*Port Jackson

Barcode MNHN : P00293798



**Bauera rubioides*
*d'Entrecasteaux Channel

Barcode MNHN : P00293799



*Unidentified *Baueraceae*
*New Holland

Barcode MNHN : P00293800

Angiospermae Dicotyledonae Rosidae
Burseraceae (Bur 1-Bur 2)



TYPE
**Canarium oleosum*
*Timor

Nota : Revised by Leenhouts, 1954
[label 3]

Barcode MNHN : P00337578



TYPE
**Canarium oleosum*
*Timor

Nota : (1) Revised by Leenhouts, 1954
[label 3] ; (2) Seed bag [label 4]

Barcode MNHN : P0337579

Celastraceae (Cel 1)



TYPE (?)
**Loeseneriella pauciflora*
*Timor

Nota : (1) Type according to Hou,
1962 [label 3] ; (2,) Revised by Hallé,
1978 [label 4]

Barcode MNHN : P00298028

Angiospermae Dicotyledonae Rosidae
Celastraceae (Cel 2-Cel 3)



TYPE

**Salacia chinensis*
*Timor

Nota. Revised by Hou, 1962 (type of
S. patens) [label 3]

Barcode MNHN : P00298029



**Salacia chinensis*
*Timor

Nota : Revised by Hou, 1962 [label 2]

Barcode MNHN : P00298030

Chrysobalanaceae (Chr 1)



**Grangeria borbonica*
*Timor

Barcode MNHN : P00293812

Angiospermae Dicotyledonae Rosidae
Combretaceae (Com 1-Com 3)



**Terminalia catappa*
*Depuch Island

Nota : Seed bag [label 2]

Barcode MNHN : P00292065



**Terminalia microcarpa*
*Timor

Barcode MNHN : P00292066



**Terminalia microcarpa*
*Timor

Barcode MNHN : P00292067

Angiospermae Dicotyledonae Rosidae
Combretaceae (Com 4-Com 6)



**Terminalia microcarpa*
*Timor

Barcode MNHN : P00292068



**Terminalia microcarpa*
*Timor

Nota : Seed bag [label 2]

Barcode MNHN : P00292069



**Terminalia microcarpa*
*Timor

Barcode MNHN : P00292070

Angiospermae Dicotyledonae Rosidae
Combretaceae (Com 7-Com 8)



**Terminalia microcarpa*
*Timor

Barcode MNHN : P00292071



**Terminalia microcarpa*
*Timor

Barcode MNHN : P00292072

Crassulaceae (Cra 1)



**Tillaea verticillaris*
*Paramatta

Barcode MNHN : P00293801

Angiospermae Dicotyledonae Rosidae

Crassulaceae (Cra 2)

Cunoniaceae (Cun 1-Cun 2)



**Tillaea* sp
*d'Entrecasteaux Channel

Barcode MNHN : P00293802



**Callicoma serratifolia*
*Parramatta

Nota : Revised by Hoogland, 1988
[label 2]

Barcode MNHN : P00293803



**Callicoma serratifolia*
*Parramatta

Nota : Revised by Hoogland, 1988
[label 3]

Barcode MNHN : P00293804

Angiospermae Dicotyledonae Rosidae
Cunoniaceae (Cun 3-Cun 5)



**Callicoma serratifolia*
*d'Entrecasteaux Channel

Nota : Revised by Hoogland, 1988
[label 2]

Barcode MNHN : P00293805



**Callicoma serratifolia*
*d'Entrecasteaux Channel

Nota : Revised by Hoogland, 1988
[label 3]

Barcode MNHN : P00293806



**Ceratopetalum gummiiferum*
*Port Jackson

Barcode MNHN : P00293807

Angiospermae Dicotyledonae Rosidae
Cunoniaceae (Cun 6)



**Ceratopetalum gummiferum*

*d'Entrecasteaux Channel

Nota : Revised by Hoogland, 1959

[label 2]

Barcode MNHN : P00293308