

PTERIDOPHYTA
&
GYMNOSPERMAE
(Conifers & Cycadales)

PTERIDOPHYTA

- * The pteridophyte (fern) herbarium of the Baudin Expedition contains 115 samples.
- * Cited collectors are Guichenot (28 reports), Leschenault (39 reports) and Riedlé (1 report).
- * Origin of each specimen is mentioned. These are : Port Jackson (27 reports), Timor (23 reports), King Island (17 reports), d'Entrecasteaux Channel (16 reports), Hawkesbury (9 reports), east coast (7 reports), unknown locality (4 reports), New Holland (3 reports), Parramatta (3 reports), Van Diemen's Land (2 reports), Maria Island (1 report), King George Sound (1 report).

Each specimen has been photographed. Accompanying labels are numbered chronologically (label number 1 being the oldest). Information provided for each specimen consists of : the plant name (i.e. most recent name according to labels), the geographical origin, the name of the collector (when possible), any additional relevant information (under the heading 'Nota'), the specimen's reference number (barcode) assigned by the Paris Museum of Natural History (MNHN collection).

The collected samples belong to 19 distinct families. These families are presented in alphabetical order : Adiantaceae (Adi), Aspidiaceae (Asi), Aspleniaceae (Ase), Blechnaceae (Ble), Davalliaceae (Dav), Dicksonaceae (Dic), Equisetaceae (Equ), Gleichenaceae (Gle), Grammitidaceae (Gra), Hymenophyllaceae (Hym), Lindsaeaceae (Lin), Lycopodiaceae (Lyc), Osmundaceae (Osm), Polypodiaceae (Pol), Psilotaceae (Psi), Pteridaceae (Pte), Schizeaceae (Sch) and Selaginellaceae (Sel). Both identified and unidentified specimens are left in the family to which they were assigned. Species in each genus and genera in each family are sorted alphabetically. An index of genus names is given for all families.

Occurrence of type materials : *Pteris guichenotii* (Pte 8-9)
Pteris microdonta (Pte 7)

GYMNOSPERMA. See slides 46 to 49

INDEX OF GENUS NAMES (Ferns)

Adiantum	Adi 1-4	Notholaena	Pte 2
		Notochlaena	Hym 7
Aspidium	Asi 1-6		
Asplenium	Ase 1-13	Polypodium	Asi 2-3
		Polystichum	Asi 7-8
Blechnum	Ble 1	Psilotum	Psi 1-2
		Pteris	Pte 1-13
Cheilanthes	Pte 1, 14		
Davallia	Dav 1-5	Schizaea	Sch 1
Dicksonia	Dic 1-4	Selaginella	Sel 1-3
Doodia	Ble 2-4		
		Todea	Osm 1-2
		Trichomanes	Hym 8-9
Equisetum	Equ 1		
		Urostachys	Lyc 1
Gleichenia	Gle 1-8		
Grammitis	Gra 1-2	<i>Unidentified</i>	Asi 11-15 ; Ase 14-15 ; Ble 13-15 ; Dic 5-6 ; Pol 5-6
Hymenophyllum	Hym 1-7		
Lindsaea	Lin 1-4		
Lomaria	Ble 5-12		
Microsorium	Pol 1		

Pteridophyta
Adiantaceae (Adi 1-Adi 3)



**Adiantum assimile*
*d'Entrecasteaux Channel
*Collected by Leschenault

Barcode MNHN : P00526977



**Adiantum hispidulum*
*Port Jackson
*Collected by Leschenault

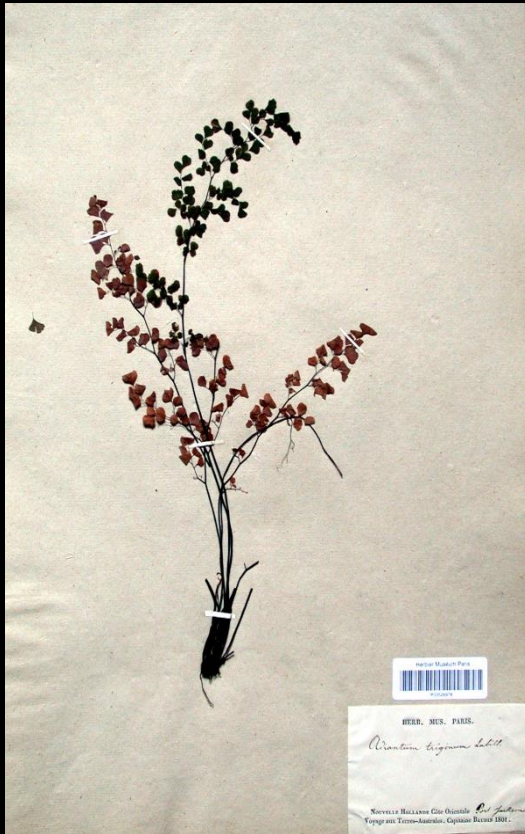
Barcode MNHN : P00526975



**Adiantum hispidulum*
*Hawkesbury

Barcode MNHN : P00526976

Pteridophyta
Adiantaceae (Adi 4)



**Adiantum triginum*
*Port Jackson

Barcode MNHN : P00526978

Pteridophyta
Aspidiaceae (Asi 1-Asi 2)



**Aspidium aculeatum*
*d'Entrecasteaux Channel

Nota : In Leschenault's hand
« Polypodium ; N°53 ; détroit
d'entrecasteaux » [label 1]

Barcode MNHN : P00526915



**Aspidium coriaceum*
*Timor
*Collected by Guichenot

Barcode MNHN : P00526906

Pteridophyta

Aspidiaceae (Asi 3-Asi 5)



- **Aspidium polymorphum*
- *Timor
- *Collected by Guichenot

Nota : Revised by Christensen, 1909
[label 2]

Barcode MNHN : P00526917



- **Aspidium proliferum*
- *King Island
- *Collected by Leschenault

Nota : In Leschenault's hand
« polypodium prolyfera ; décrite
N°31 ; île King » [label 1]

Barcode MNHN : P00526909



- **Aspidium proliferum*
- *King Island

Nota : In Leschenault's hand
« polypodium prolyfera , décrite
N°31 ; île King » [label 1]

Barcode MNHN : P00526913

Pteridophyta
Aspidiaceae (Asi 6-Asi 7)



Aspidium trifoliatum

*Timor

*Collected by Leschenault

Nota : Revised by R.B., 1909 [label 4]

Barcode MNHN : P00526918



**Polystichum adiantiforma*

*King Island

Nota : In Guichenot's hand, see opposite [label 2]

Barcode MNHN : P00526907

Polystichum adiantiforma

Guichenot's text

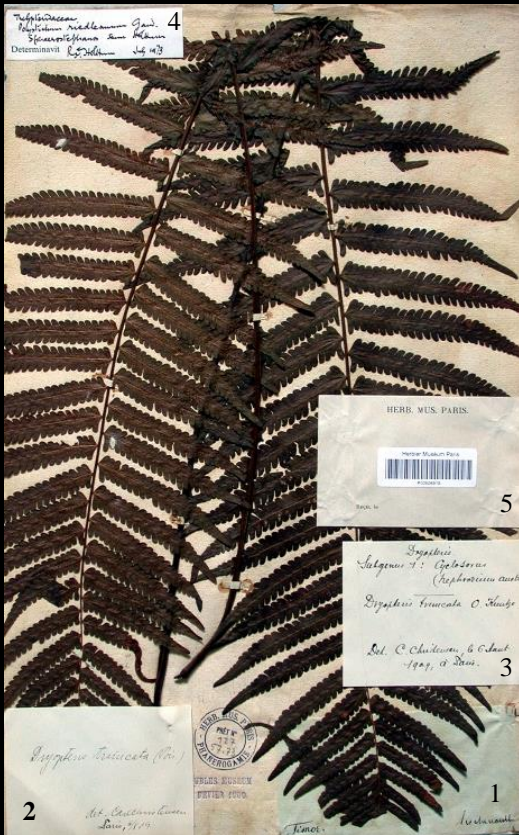
Original. espaisse de fougère cette fougère croix à bondamment sur là fougère en arbre dant laiest endrois sombre
rée caulttée à lile quinc

Français. Espèce de fougère. Cette fougère croît abondamment sur des fougères arborescentes dans les endrois sombres.
Récoltée à l'île King.

English. Species of fern. This fern grows abundantly on tree ferns in deep shade.
Collected on King Island.

Pteridophyta

Aspidiaceae (Asi 8-Asi 10)



- **Polystichum riedleanum*
- *Timor
- *Collected by Leschenault

Nota : Revised by Holttum, 1973
 [label 4]

Barcode MNHN : P00526919



- **Sphaerostephanos unitum*
- *Timor
- *Collected by Guichenot

Nota : Revised by Holttum, 1976
 [label 2]

Barcode MNHN : P00526920



- **Sphaerostephanos unitum*
- *Timor
- *Collected by Leschenault

Nota : Revised by Holttum, 1976
 [label 2]

Barcode MNHN : P00526921

Pteridophyta
Aspidiaceae (Asi 11-Asi 13)



- *Unidentified Aspidiaceae
- *Port Jackson
- *Collected by Guichenot

Barcode MNHN : P00526912



- *Unidentified Aspidiaceae
- *King Island
- *Collected by Guichenot

Barcode MNHN : P00526908



- *Unidentified Aspidiaceae
- *d'Entrecasteaux Channel
- *Collected by Guichenot

Barcode MNHN : P00526910

Pteridophyta
Aspidiaceae (Asi 14-Asi 15)



*Unidentified Aspidiaceae
*South coast

Barcode MNHN : P00526911



*Unidentified Aspidiaceae
*South coast
*Collected by Guichenot

Barcode MNHN : P00526914

Pteridophyta
Aspleniaceae (Ase 1)



**Asplenium cuneatum*
*Timor

Nota : In Leschenault's hand
« *asplenium cuneatum* Lam. » [label 2]

Barcode MNHN : P00526922

Pteridophyta
Aspleniaceae (Ase 2-Ase 3)



- **Asplenium cuneatum*
- *Timor
- *Collected by Guichenot

Barcode MNHN : P00526923



- **Asplenium bulbiferum*
- *King Island
- *Collected by Guichenot

Nota : In Guichenot's hand, see opposite [label 2]

Barcode MNHN : P00526932

Asplenium bulbiferum

Guichenot's text

Original. epaisse de fougère cette fougère croit dans la partie très sèche du bois.
Récoltée à l'île King

Français. Espèce de fougère. Cette fougère croît dans la partie très sèche du bois.
Récoltée à l'île King.

English. Species of fern. This fern grows in the very dry part of the wood.
Collected on King Island.

Pteridophyta
Aspleniaceae (Ase 4-Ase 6)



- **Asplenium bulbiferum*
- *Unknown locality
- *Collected by Leschenault

Barcode MNHN : P00526933



- **Asplenium bulbiferum*
- *King Island

Nota : In Leschenault's hand
« asplenium ; île King » [label 1]

Barcode MNHN : P00526934

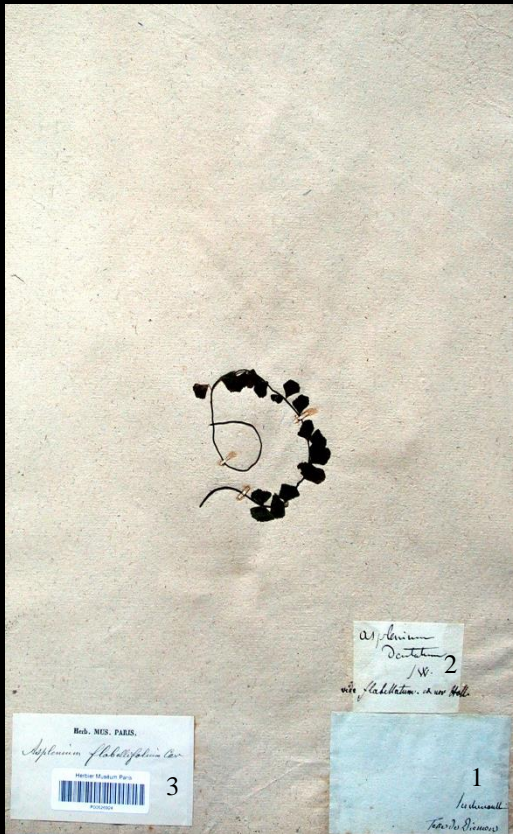


- **Asplenium bulbiferum*
- *d'Entrecasteaux Channel

Nota : In Leschenault's hand
« Dovea arborescens ; N°58 ; détroit
d'entrecasteaux » [label 1]

Barcode MNHN : P00526931

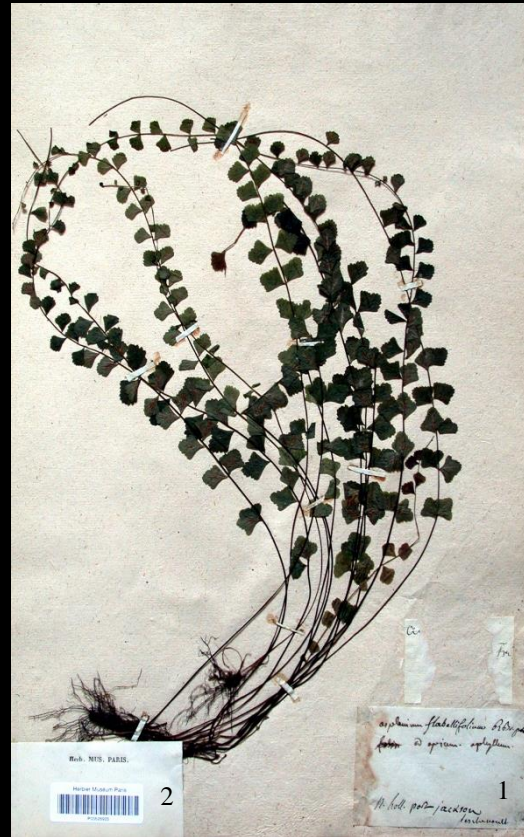
Pteridophyta
Aspleniaceae (Ase 7-Ase 9)



- **Asplenium flabellifolium*
- *Van Diemen's Land
- *Collected by Leschenault

Nota : In Leschenault's hand « vide flabellatum ex nov Holl » [label 2, pars]

Barcode MNHN : P00526924



- **Asplenium flabellifolium*
- *Port Jackson
- *Collected by Leschenault

Barcode MNHN : P00526925



- **Asplenium flabellifolium*
- *Port Jackson

Barcode MNHN : P00526926

Pteridophyta
Aspleniaceae (Ase 10-Ase 12)



**Asplenium obtusatum*
*d'Entrecasteaux Channel
*Collected by Leschenault

Nota : In Leschenault's hand
« asplenium saxatile ; N°54 ; détroit
d'entrecasteaux » [label 2]

Barcode MNHN : P00526928



**Asplenium obtusatum*
*d'Entrecasteaux Channel

Barcode MNHN : P00526927



**Asplenium obtusatum*
*d'Entrecasteaux Channel

Barcode MNHN : P00526929

Pteridophyta
Aspleniaceae (Ase 13-Ase 15)



**Asplenium proliferum*
*Timor

Barcode MNHN : P00526916



*Unidentified Aspleniaceae
*King Island
*Collected by Leschenault

Nota : In Leschenault's hand « inter filius prope trichome ; décrite N°30 ; île King » [label 1]

Barcode MNHN : P00526938



*Unidentified Aspleniaceae
*Timor
*Collected by Leschenault

Barcode MNHN : P00526930

Pteridophyta
Blechnaceae (Ble 1-Ble 2)



- **Blechnum cartilagineum*
- *Port Jackson
- *Collected by Leschenault

Barcode MNHN : P00526885



- **Doodia aspera*
- *Port Jackson

Nota : In Guichenot's hand, see opposite
[label 1]

Barcode MNHN : P00526893

Doodia aspera

Text of Guichenot

Original. espèce de fougère cette
fougère croît dans les endroits
très humides
aux pourres gassions

Français. Espèce de fougère. Cette
fougère croît dans les endroits très
humides.
Au port Jackson.

English. Species of fern. This fern
grows in very damp places.
In Port Jackson.

Pteridophyta
Blechnaceae (Ble 3-Ble 5)



**Doodia aspera*
*Port Jackson

Barcode MNHN : P00526896



**Doodia aspera*
*Port Jackson
*Collected by Guichenot

Barcode MNHN : P00526894



**Lomaria discolor*
*d'Entrecasteaux Channel

Barcode MNHN : P00526890

Pteridophyta
Blechnaceae (Ble 6-Ble 8)



**Lomaria discolor*

*Port Jackson

Nota : In Leschenault's hand « port jackson ; acrostichum ? ; N°11 »
[label 1]

Barcode MNHN : P00526887



**Lomaria falcata*

*Port Jackson

*Collected by Guichenot

Barcode MNHN : P00526886



**Lomaria nuda*

*Port Jackson

*Collected by Leschenault

Barcode MNHN : P00526891

Pteridophyta
Blechnaceae (Ble 9-Ble 10)



**Lomaria procera*
*d'Entrecasteaux Channel

Barcode MNHN : P00526898



**Lomaria procera*
*d'Entrecasteaux Channel
*Collected by Leschenault

Nota : In Guichenot's hand , see opposite [label 3]

Barcode MNHN : P00526899

Lomaria procera

Text of Guichenot

Original. cette fougère croit dans les endroits marécageux aux détroits d'Entrecasteaux

Français. Cette fougère croît dans les endroits marécageux. Au détroit d'Entrecasteaux.

English. This fern grows in marshy places. In the d'Entrecasteaux Channel.

Pteridophyta
Blechnaceae (Ble 11-Ble 12)



**Lomaria procera*
*King Island

Barcode MNHN : P00526897



**Lomaria procera*
*d'Entrecasteaux Channel & King Island

Nota : (1) In Leschenault's hand
« acrostichum obscurum ; propter frondis
colorum ; île King » [label 4] ; (2) In
Guichenot's hand, see opposite [label 3]

Barcode MNHN : P00526889

Lomaria discolor

Text of Guichenot

Original. epaisse de fougère cette
fougère croix dant laiest endroit
maréqueux elle s'élaivre de 2 et 3 piet
de taier
elle croix dant dée trois dandrè castaux

Français. Espèce de fougère. Cette
fougère croît dans les endroits
marécageux. Elle s'élève de 2 à 3 pieds
de terre.
Elle croît dans le détroit d'Entrecasteaux.

English. Species of fern. This fern grows
in marshy places. It reaches 2 to 3 feet in
height.

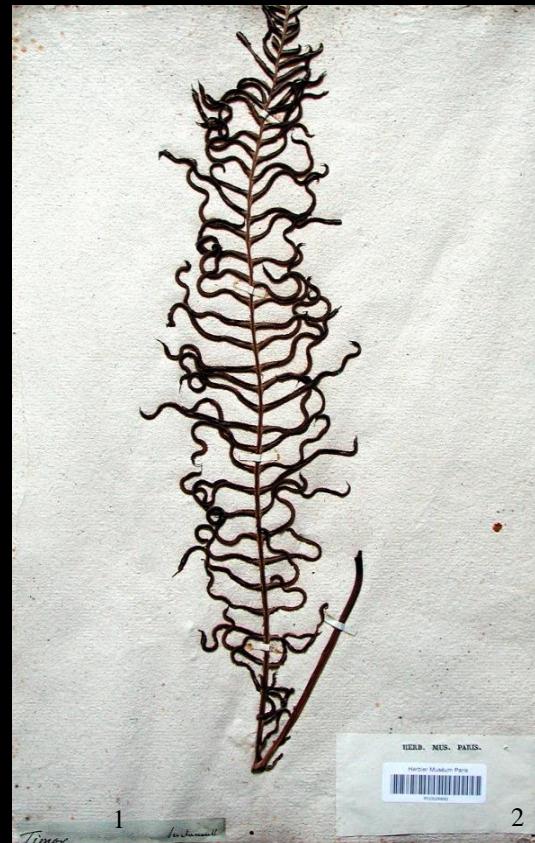
It grows in the d'Entrecasteaux Channel.

Pteridophyta
Blechnaceae (Ble 13-Ble 15)



*Unidentified Blechnaceae
*Hawkesbury
*Collected by Leschenault

Barcode MNHN : P00526888



*Unidentified Blechnaceae
*Timor
*Collected by Leschenault

Barcode MNHN : P00526892



*Unidentified Blechnaceae
*Port Jackson
*Collected by Guichenot

Barcode MNHN : P00526895

Pteridophyta
Davalliaceae (Dav 1-Dav 3)



- **Davallia repens*
- *Timor
- *Collected by Guichenot

Nota : Revised by Nootboom, 1993
[label 3]

Barcode MNHN : P00526900



- **Davallia solida* var. *pyxidata*
- *Hawkesbury

Nota : Revised by Nootboom, 1992
[label 2]

Barcode MNHN : P00526904



- **Davallia solida* var. *pyxidata*
- *Hawkesbury
- *Collected by Guichenot

Nota : Revised by Nootboom, 1992
[label 4]

Barcode MNHN : P00526903

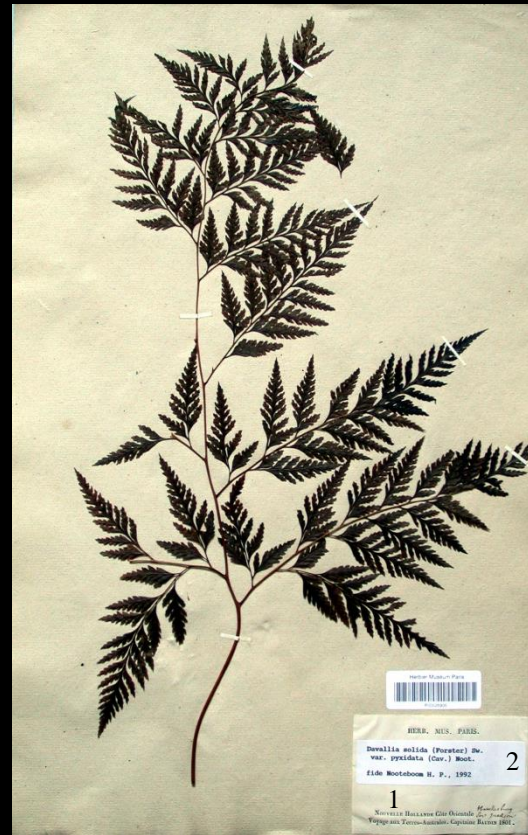
Pteridophyta
Davalliaceae (Dav 4-Dav 5)



- **Davallia solida* var *pyxidata*
- *Hawkesbury
- *Collected by Leschenault

Nota : Revised by Nootboom, 1992
[label 3]

Barcode MNHN : P00526902



- **Davallia solida* var *pyxidata*
- *Hawkesbury

Nota : Revised by Nootboom, 1992
[label 2]

Barcode MNHN : P00526905

Pteridophyta
Dicksoniaceae (Dic 1)



- **Dicksonia antarctica*
- *d'Entrecasteaux Channel

Barcode MNHN : P00526935

Pteridophyta
Dicksoniaceae (Dic 2-Dic 4)



**Dicksonia antarctica*
*Port Jackson

Barcode MNHN : P00526936



**Dicksonia antarctica*
*d'Entrecasteaux Channel
*Collected by Guichenot

Barcode MNHN : P00526939



**Dicksonia antarctica*
*Port Jackson

Barcode MNHN : P00526937

Pteridophyta
Dicksoniaceae (Dic 5-Dic 6)



*Unidentified Dicksoniaceae
*d'Entrecasteaux Channel
*Collected by Leschenault

Barcode MNHN : P00526940



*Unidentified Dicksoniaceae
*d'Entrecasteaux Channel
*Collected by Leschenault

Barcode MNHN : P00526941

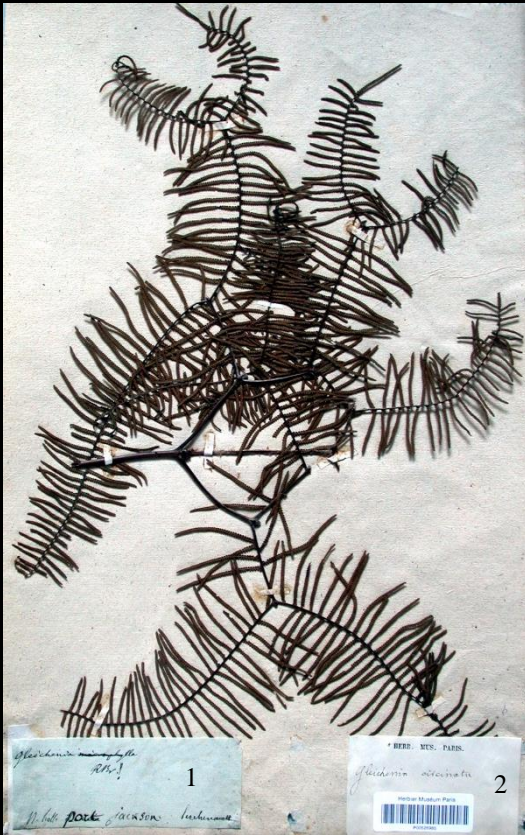
Pterodophyta
Equisetaceae (Equ 1)



**Equisetum timorianum*
*Timor
*Collected by Leschenault

Barcode MNHN : P00526996

Pteridophyta
Gleichenaceae (Gle 1-Gle 3)



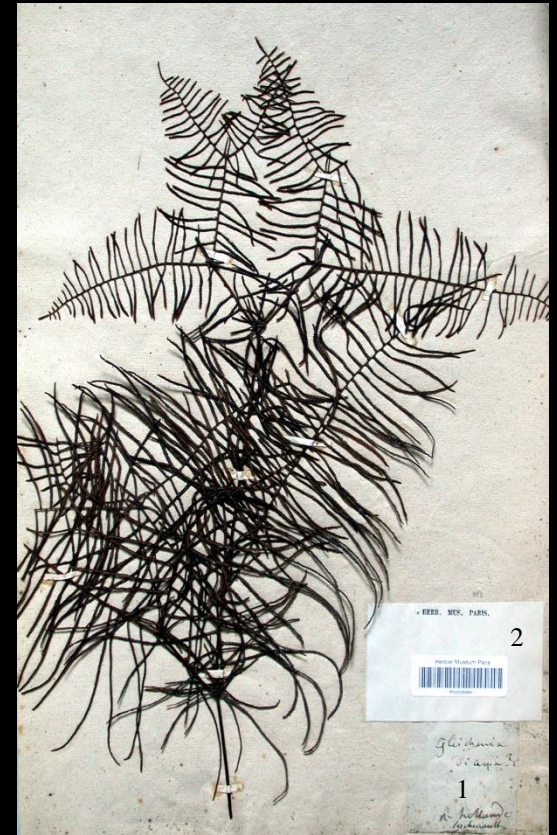
**Gleichenia circinata*
*Port Jackson
*Collected by Leschenault

Barcode MNHN : P00526985



**Gleichenia dicarpa*
*Maria Island
*Collected by Leschenault

Barcode MNHN : P00526986



**Gleichenia dicarpa*
*New Holland
*Collected by Leschenault

Barcode MNHN : P00526984

Pteridophyta
Gleichenaceae (Gle 4-Gle 6)



- **Gleichenia flabellata*
- *East coast
- *Collected by Leschenault

Barcode MNHN : P00526980



- **Gleichenia flabellata*
- *East coast

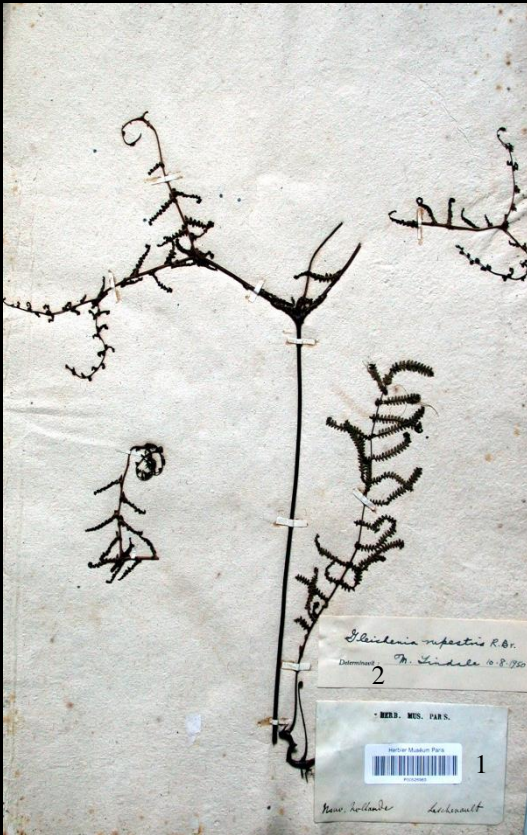
Barcode MNHN : P00526981



- **Gleichenia flabellata*
- *Unknown locality
- *Collected by Leschenault

Barcode MNHN : P00526979

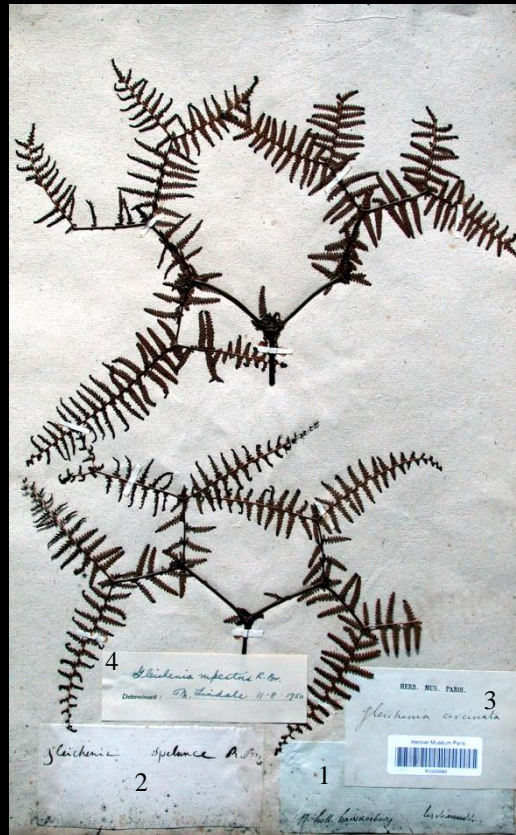
Pteridophyta
Gleicheniaceae (Gle 7-Gle 8)



- **Gleichenia rupestris*
- *New Holland
- *Collected by Leschenault

Nota : Revised by Lindale, 1950 [label 2]

Barcode MNHN : P00526983



- **Gleichenia rupestris*
- *Hawkesbury
- *Collected by Leschenault

Nota : Revised by Lindale, 1953
[label 4]

Barcode MNHN : P00526982

Pteridophyta
Grammitidaceae (Gra1)

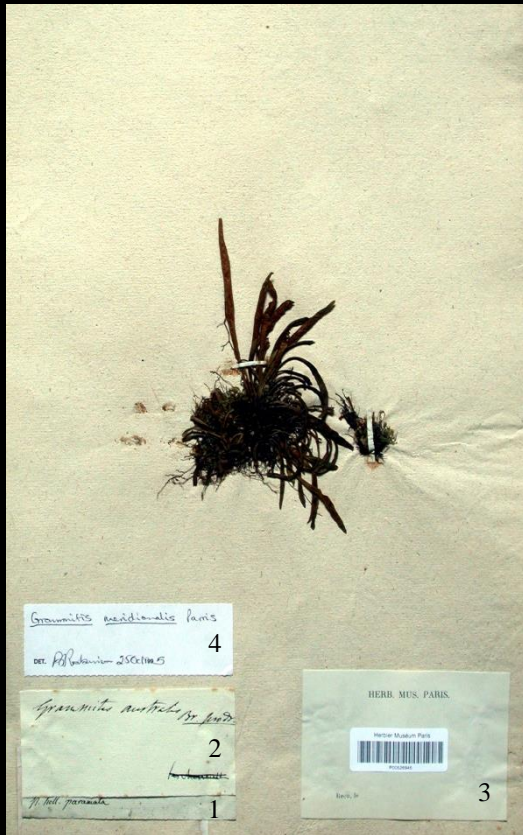


- **Grammitis meridionalis*
- *Port Jackson

Nota : Revised by Rotamison, 1995 [label 2]

Barcode MNHN : P00526944

Pteridophyta
Grammitidaceae (Gra 2)



**Grammitis meridionalis*
*Parramatta

Nota : Revised by Rotamison, 1995
[label 4]

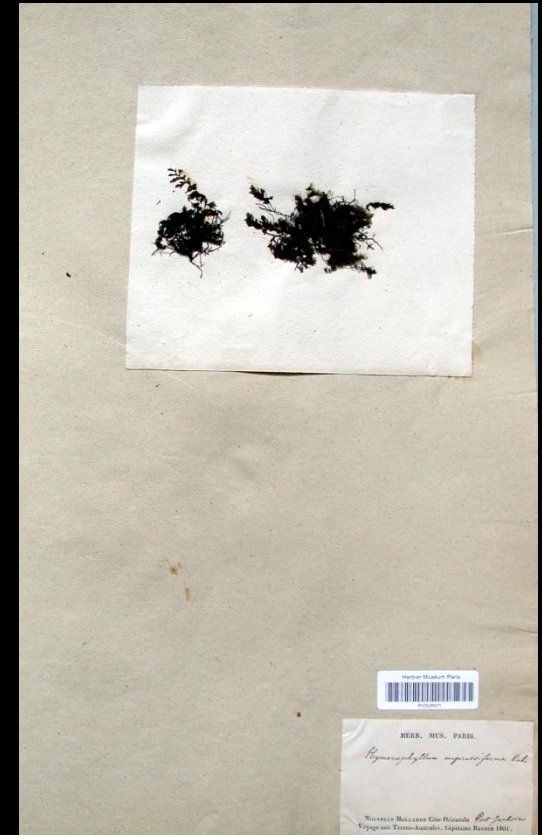
Barcode MNHN : P00526945

Pteridophyta
Hymenophyllaceae (Hym 1-Hym 2)



**Hymenophyllum cupressiforme*
*Parramatta
*Collected by Guichenot

Barcode MNHN : P00526970



**Hymenophyllum cupressiforme*
*Port Jackson

Barcode MNHN : P00526971

Pteridophyta
Hymenophyllaceae (Hym 3-Hym 4)



Hymenophyllum flabellatum

Guichenot's text

Original. fougère cette fougère
cette fougère croît sur la fougère en
arbre le long de la rivière
Récoltée à l'île King

Français. Fougère. Cette fougère
croît sur une fougère arborescente le
long de la rivière.
Récoltée à l'île King.

English. Fern. This fern grows on a
tree fern along the river.
Collected on King Island.



**Hymenophyllum flabellatum*

*King Island

*Collected by Guichenot

Barcode MNHN : P00526972

**Hymenophyllum flabellatum*

*King Island

Nota : In Guichenot's hand, see
opposite [label 1]

Barcode MNHN : P00526973

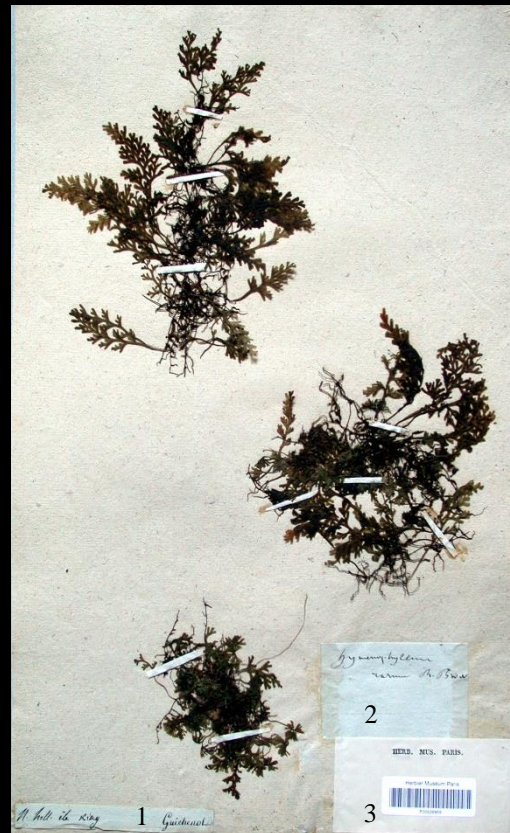
Pteridophyta
Hymenophyllaceae (Hym 5-Hym 7)



- **Hymenophyllum flabellatum*
- *King Island
- *Collected by Leschenault

Nota : In Leschenault's hand
« trichomanes ? ; décrite n°14 ; île
King » [label 1]

Barcode MNHN : P00526974



- **Hymenophyllum rarum*
- *King Island
- *Collected by Guichenot

Barcode MNHN : P00526969



- **Notochlaena distans*
- *Port Jackson

Barcode MNHN : P00526990

Pteridophyta
Hymenophyllaceae (Hym 8-Hym 9)



**Trichomanes tumbergense*
*Unknown locality
*Collected by Leschenault

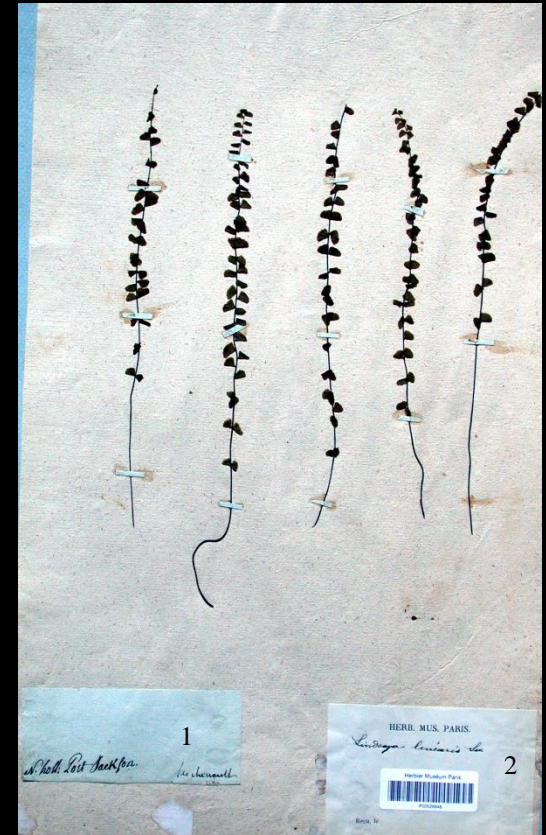
Barcode MNHN : P00526968



**Trichomanes venosum*
*King Island
*Collected by Leschenault

Barcode MNHN : P00526987

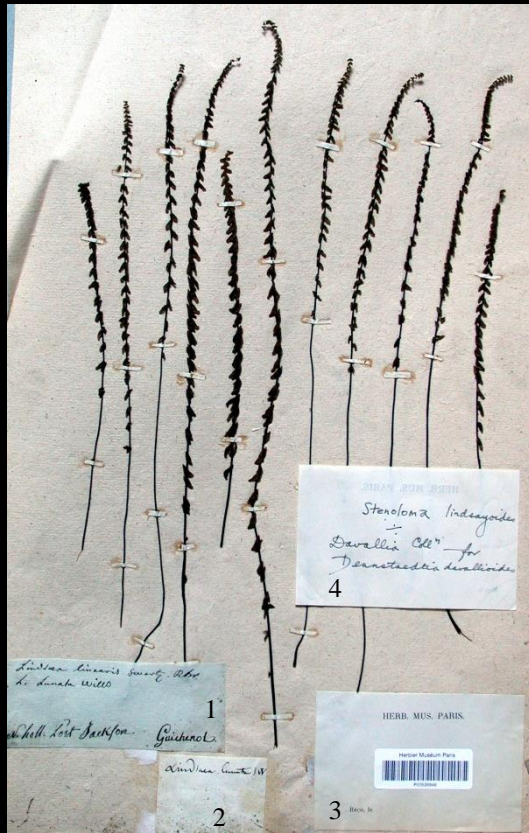
Pteridophyta
Lindsaeaceae (Lin 1)



**Lindsaea linearis*
*Port Jackson
*Collected by Leschenault

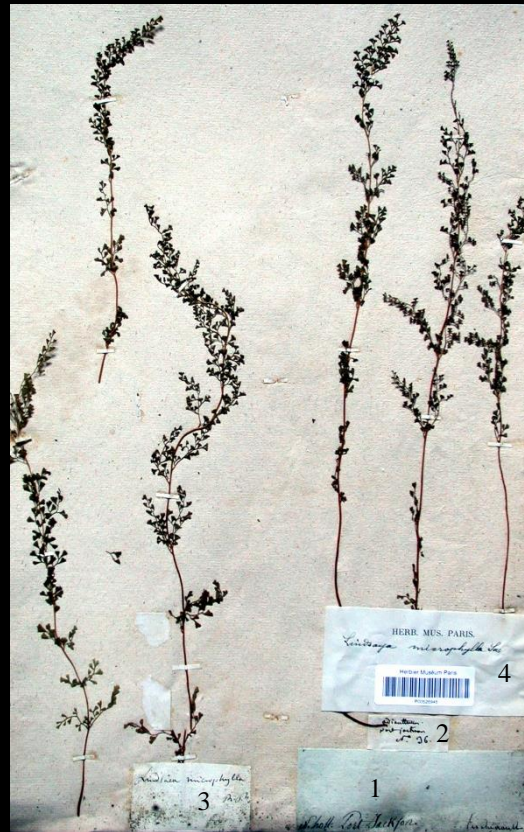
Barcode MNHN : P00526948

Pteridophyta
Lindsaeaceae (Lin 2-Lin 4)



- **Lindsaea linearis*
- *Port Jackson
- *Collected by Guichenot

Barcode MNHN : P00526949



- **Lindsaea microphylla*
- *Port Jackson
- *Collected by Leschenault

Nota : In Leschenault's hand
« adiantum ; port jackson ; N°36 »
[label 3]

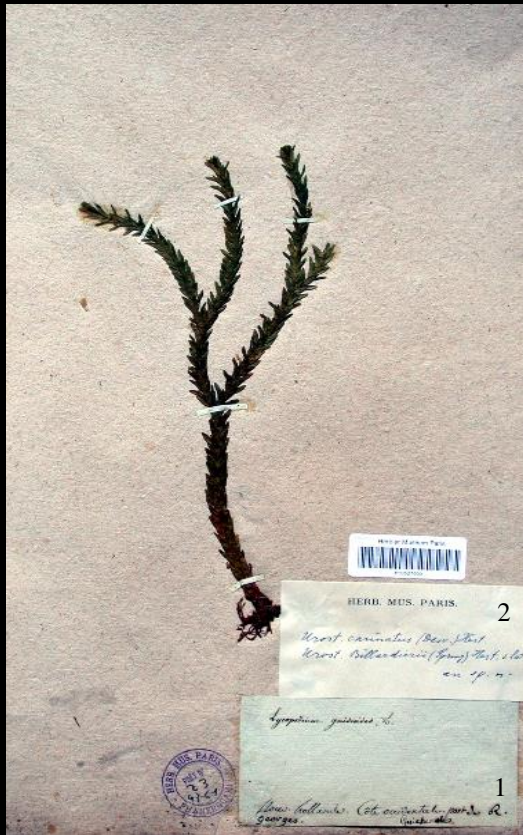
Barcode MNHN : P00526946



- **Lindsaea microphylla*
- *Hawkesbury

Barcode MNHN : P00526947

Pteridophyta
Lycopodiaceae (Lyc 1)



- **Urostachys carinatus*
- *King George Sound
- *Collected by Guichenot

Barcode MNHN : P00527000

Pteridophyta
Osmundaceae (Osm 1)



- **Todea barbara*
- *King Island

Nota : In Guichenot's hand, see opposite
[label 1]

Barcode MNHN : P00526995

Todea barbara

Guichenot's text

Original. fougère sélevant de 18 à 20
pousse de taier cette fougère croix a ile
quinc elle croix sur des de buist de
vieux arbre dant laiest en droix laist
plust umide
Réé couttée à lile quinc

Français. Fougère de 18 à 20 pouces de
haut. Cette fougère croît sur l'île King.
Elle croît sur des débris de vieux arbres
dans les endroits les plus humides.
Récoltée à l'île King.

English. Fern from 18 to 20 inches high.
This fern grows on King island. It
grows on the debris of old trees in the
wetttest places.
Collected on King Island.

Pteridophyta
Osmundaceae (Osm 2)



**Todea barbara*
*Port Jackson

Barcode MNHN : P00526994

Pteridophyta
Polypodiaceae (Pol 1)



**Microsorium diversifolium*
*King Island

Nota : (1) In Guichenot's hand, see opposite [label 1] ; (2) Revised by Nootboom, 1995 [label 3]

Barcode MNHN : P00526957

Microsorium diversifolium

Guichenot's text

Original. espaisse de fougère cette fougère crois sur laist arbre
Rée couttée à lile quinc

Français. Espèce de fougère. Cette fougère croît sur les arbres.
Récoltée à l'île King.

English. Species of fern. This fern grows on trees.
Collected in King Island.

Pteridophyta
Polypodiaceae (Pol 2-Pol 4)



**Polypodium diversifolium*
*Van Diemen's Land
*Collected by Leschenault

Barcode MNHN : P00526959



**Polypodium grammitidis*
*King Island
*Collected by Guichenot

Barcode MNHN : P00526943

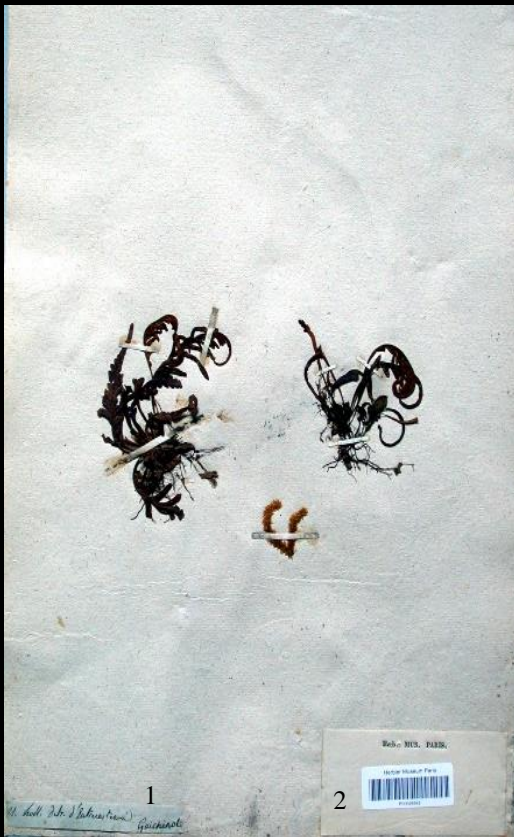


**Pyrrosia rupestris*
*Parramatta
*Collected by Leschenault

Nota : Revised by Hovenkamp, 1982 [label 3]

Barcode MNHN : P00526956

Pteridophyta
Polypodiaceae (Pol 5-Pol 6)



- *Unidentified Polypodiaceae
- *d'Entrecasteaux Channel
- *Collected by Guichenot

Barcode MNHN : P00526942



- *Unidentified Polypodiaceae
- *Unknown locality
- *Collected by Leschenault

Barcode MNHN : P00526958

Pteridophyta
Psilotideae (Psi 1)



- **Psilotum triquetrum*
- *New Holland
- *Collected by Leschenault

Barcode MNHN : P00527002

Pteridophyta
Psilotaceae (Psi 2)



- **Psilotum triquetrum*
- *Port Jackson
- *Collected by Guichenot

Nota : The only Baudin specimen is the one on the right [labels 1 & 2]

Barcode MNHN : P00527001

Pteridaceae (Pte 1-Pte 2)



- **Cheilanthes tenuifolia*
- *Port Jackson
- *Collected by Guichenot

Nota : see also sample Pte 14

Barcode MNHN : P00526988



- **Notholaena distans*
- *Port Jackson
- *Collected by Leschenault

Barcode MNHN : P00526989

Pteridophyta

Pteridaceae (Pte 1-Pte 2)



**Pteris falca*
*King Island

Nota : In Guichenot's hand, see opposite [label 2]

Barcode MNHN : P00526991

Pteris falcata

Guichenot's text

Original. espaisse de fougère cette fougère croix dant laiest bouiest sur un térien saique elle cée laivre de 20 et 24 pousse de taier Réé couttée à lile quinc

Français. Espèce de fougère. Cette fougère croît dans les bois sur un terrain sec. Elle s'élève de 20 à 24 pouces de terre. Récoltée à l'île King.

English. Species of fern. This fern grows in woods on dry ground. It reaches 20 to 24 inches in height. Collected on King Island.



**Pteris incisa*
*Hawkesbury
*Collected by Leschenault

Nota : In Leschenault's hand « port jackson ; [illegible] ; N°22 ; leschenault» [label 2]

Barcode MNHN : P00526954

Pteridophyta
Pteridaceae (Pte 3-Pte 5)



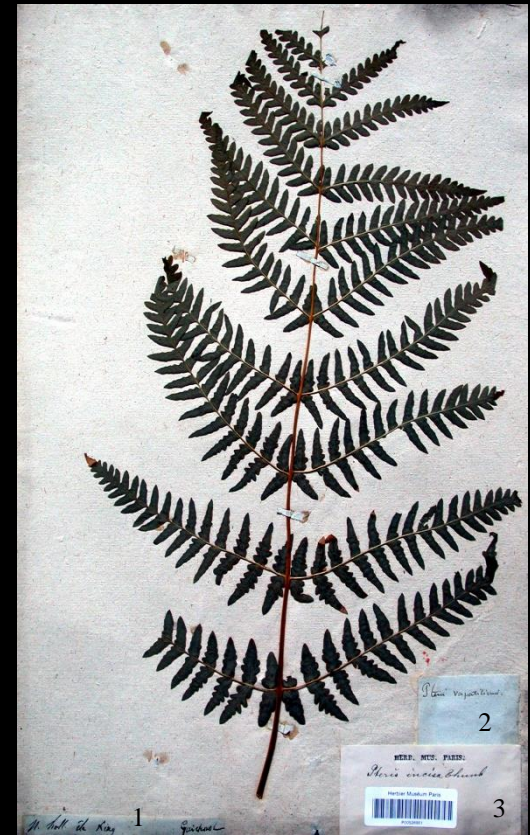
**Pteris incisa*
*d'Entrecasteaux Channel
*Collected by Leschenault

Barcode MNHN : P00526952



**Pteris incisa*
*East coast
*Collected by Leschenault

Barcode MNHN : P00526953



**Pteris incisa*
*King Island
*Collected by Guichenot

Barcode MNHN : P00526951

Pteridophyta
Pteridaceae (Pte 6-Pte 8)



**Pteris longifolia*
*Timor
*Collected by Guichenot

Barcode MNHN : P00526967



TYPE
**Pteris longifolia*
*Timor
*Collected by Leschenault

Nota : Type of *Pteris microdonta*

Barcode MNHN : P00526964



TYPE
**Pteris longifolia*
*Timor
*Collected by Guichenot

Nota : Type of *Pteris guichenotii*

Barcode MNHN : P00526963

Pteridophyta
Pteridaceae (Pte 9-Pte 11)



TYPE

**Pteris longifolia*

*Timor

*Collected by Guichenot

Nota : Type of *Pteris guichenotii*

Barcode MNHN : P00526962



**Pteris nemoralis*

*Timor

*Collected by Guichenot

Barcode MNHN : P00526960



**Pteris nemoralis*

*Timor

Barcode MNHN : P00529961

Pteridophyta
Pteridaceae (Pte 12-Pte 14)



- **Pteris vittata*
- *Timor
- *Collected by Riedlé

Nota : Revised by Posthumus, 1932
[label 4]

Barcode MNHN : P00526966



- **Pteris vittata*
- *Timor
- *Collected by Leschenault

Nota ; Revised by Posthumus, 1932
[label 4]

Barcode MNHN : P00526965



- **Cheilanthes pteroides*
- *East coast
- *Collected by Leschenault

Nota : see also sample Pte 1

Barcode MNHN : P00526992

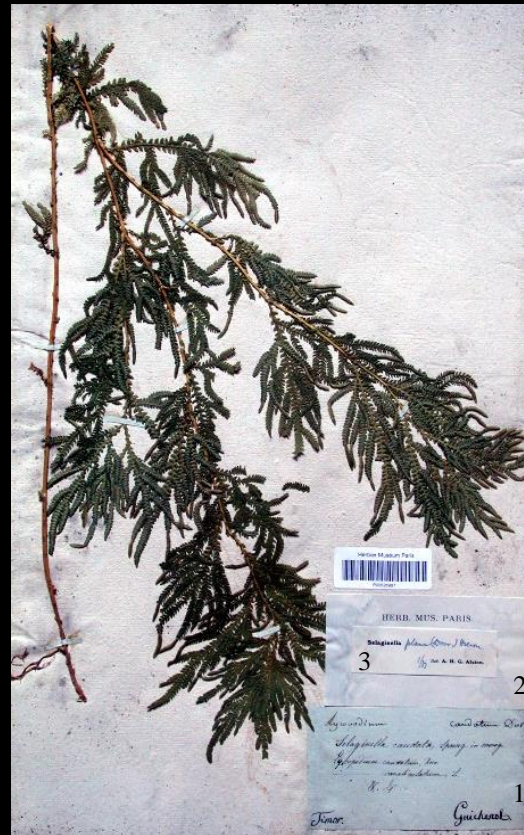
Pteridophyta
Schizeaceae (Sch 1)



- **Schizaea bifida*
- *Hawkesbury
- *Collected by Leschenault

Barcode MNHN : P00526993

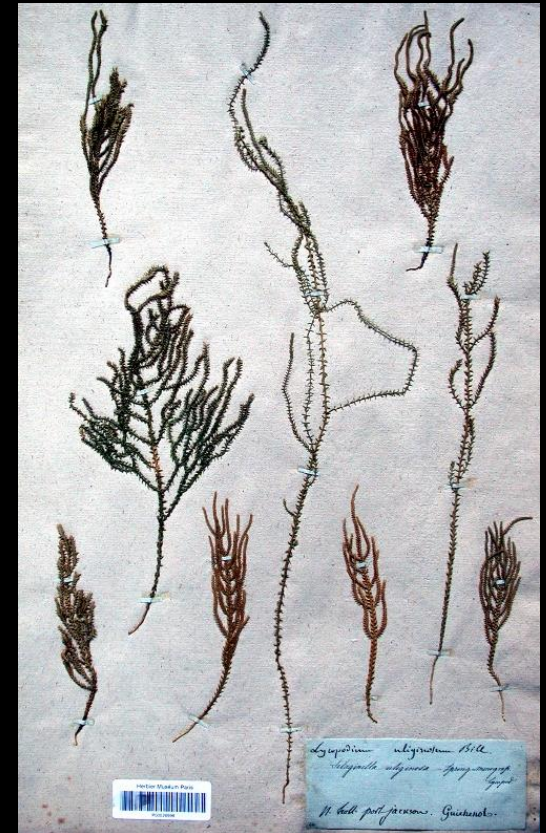
Pteridophyta
Selaginellaceae (Sel 1-Sel 2)



- **Selaginella plana*
- *Timor
- *Collected by Leschenault

Nota : Revised by Alston, 1933 [label 3]

Barcode MNHN : P00526997



- **Selaginella uliginosa*
- *Port Jackson
- *Collected by Guichenot

Barcode MNHN : P00526998

Pteridophyta
Selaginellaceae (Sel 3)



**Selaginella uliginosa*

*Port Jackson

Barcode MNHN : P00526999

GYMNOSPERMAE

*The herbarium of gymnosperms (conifers and cycadales) contains eight specimens. It includes representatives of two species of conifers (Cupressaceae, Cup 1-2) and of three species of cycadales (Cycadaceae [Cyc1-2] and Zamiaceae [Zam1-4]).

*The only cited collector is Leschenault (2 reports).

*Origins of specimens are Port Jackson (4 reports), Geographe Bay (1 report), Swan River (1 report), Timor (1 report), west coast (1 report).

Each specimen has been photographed. Accompanying labels are numbered chronologically (label 1 being the oldest). Information provided for each specimen consists of : the plant name (i.e., most recent name according to labels), the geographical origin, the name of the collector (when possible), additional relevant information (under the heading 'Nota'), the sample's reference number (barcode) assigned by the Paris Museum of Natural History (MNHN collection).

Specimens are left in the family to which they were assigned. Genera are sorted alphabetically.

Occurrence of type material : *Macrozamia riedlei* (Zam 3- 4)

Gymnospermae Coniferae
Cupressaceae (Cup 1-Cup 2)



SPECIMEN A

SPECIMEN A

**Callitris australis*
*Port Jackson

Barcode MNHN : P01585275

SPECIMEN B

**Callitris preissii*
*Swan River

Barcode MNHN: P01585264



SPECIMEN B

Gymnospermae Cycadales
Cycadaceae (Cyc 1-Cyc 2)



**Cycas circinalis*
*Timor
*Collected by Leschenault

Barcode MNHN : P01583698



*Unidentified *Cycas*
*Port Jackson

Nota : In Leschenault's hand
« *Cycas* ; port jackson,
N°18 »

Barcode MNHN : P00298073

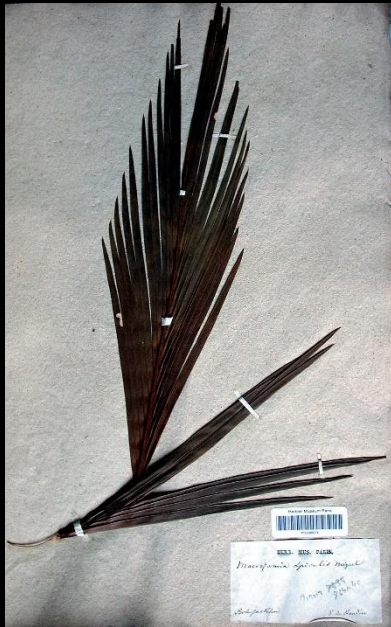
Zamiaceae (Zam 1)



**Macrozamia riedlei*
*Port Jackson
*Collected by Leschenault

Barcode MNHN : P00298072

Zamiaceae (Zam 2-Zam 4)



**Macrozamia spiralis*
*Port Jackson

Barcode MNHN : P00298074



TYPE ?
**Macrozamia riedlei*
*West coast

Nota : Revised by Macfarlane,
1990 (possibly isotype
material [? part of the
holotype leaf]) [label 2]

Barcode MNHN : P00761419



TYPE ?
**Macrozamia riedlei*
*Geographe Bay

Nota : Revised by Macfarlane, 1990
(possibly isotype material [? part of the
holotype leaf]) [label 2]

Barcode MNHN : P00761418