

# ANGIOSPERMAE MONOCOTYLEDONEAE I

---

Agavaceae to Flagellariaceae

# MONOCOTYLEDONEAE

\* The monocot herbarium of the Baudin expedition contains 282 specimens.

\* Cited collectors are Guichenot (64 reports), Leschenault (50 reports) and Riedlé (8 reports).

\* Origin of each specimen is mentioned. These places are : Port Jackson (80 reports), Timor (59 reports), King George Sound (40 reports), west coast (28 reports), d'Entrecasteaux Channel (27 reports), King Island (13 reports), east coast (7 reports), Blue Mountains (7 reports), south coast (6 reports), Geographe Bay (6 reports), Van Diemens' Land (5 reports), Barren Islands (4 reports), Kangaroo Island (4 reports), unknown locality (4 reports), Maria Island (3 reports), Hawkesbury (2 reports), New Holland (2 reports), Swan River (1 report), north coast (1 report), Parramatta (1 report).

Each plant specimen has been photographed. Accompanying labels are numbered chronologically (label 1 being the oldest). Information provided for each specimen consists of : : the plant name (i.e. most recent name according to labels), the geographical origin, the name of the collector (when possible), additional relevant information (under the heading 'Nota'), the specimens's reference number (barcode) assigned by the Paris Museum of Natural History (MNHN collection).

The collected specimens belong to 20 distinct families that were grouped into three digital herbaria (H3 to H5). Families are presented in alphabetical order.

-H3 herbarium includes families Agavaceae (Aga), Amaryllidaceae (Ama), Anarthriaceae (Ana), Cannaceae (Can), Centrolepidaceae (Cen), Comeliaceae (Com), Cymodoceae (Cym), Cyperaceae (Cyp), Flagellariaceae (Fla).

-H4 herbarium includes families Haemodoraceae (Hae), Juncaceae (Jun), Juncaginaceae (Juc), Liliaceae (Lil), Phylesiaceae (Phy), Poaceae part 1 (Poa).

-H5 herbarium includes families Poaceae part 2 (Poa), Posidoniaceae (Pos), Restoniaceae (Res), Smilacaceae (Smi), Xanthorrhaceae (Xan), Xyridaceae (Xyr).

Identified and unidentified specimens are left in the family to which they were assigned. Species in each genus and genera in each family are sorted alphabetically. An index of genus names is given for all families.

\* Occurrence of type materials : *Anizoganthos flavidus* (H4 : Hae 1-3), *Fimbristylis calocarpa* (H3 : Cyp 27)  
*Fimbristylis dichotoma* (H3 : Cyp 29-30) *Lepidosperma squamata* (H3 : Cyp 65)  
*Cymbopogon ambiguus* (H4 : Poa 23-25)

# INDEX OF GENUS NAMES (MONOCOTYLEDONES) [HERBARIUM H3 TO H5]

Acanthocarpus	H5 : Xan 1-2	Commelyna	H3 : Com 1		
Agrostis	H4 : Poa 1-4	Conostylis	H4 : Hae 5	Isachne	H5 : Poa 41
Amphibolis	H3 : Cym 1	Cymbopogon	H4 : Poa 23-25	Isolepis	H3 : Cyp 48
Anarthria	H3 : Ana 1-6	Cyperus	H3 : Cyp 16-23		
Andropogon	H4 : Poa 5-7			Juncus	H4 : Jun 2-7
Anigosanthos	H4 : Hae 1-4	Dactyloctenium	H4 : Poa 26		
Anisopogon	H4 : Poa 8-9	Danthonia	H4 : Poa 27	Kyllingia	H3 : Cyp 50-52
Anthistiria	H4 : Poa 10-12	Dasyogon	H5 : Xan 4		
Apodasmia	H4 : Jun 1	Deyeuxia	H3 : Poa 28	Lampocarya	H3 : Cyp 53
Arthrostylis	H3 : Cyp 1-2	Dianella	H4 : Lil 1-6	Laxmannia	H4 : Lil 9
		Digitaria	H4 : Poa 29-30	Lepidosperma	H3 : Cyp 54-65
Baloskion	H5 : Res 1-4	Distichlys	H4 : Poa 31-32	Leptocarpus	H4 : Res 7-10
Briza	H4 : Poa 13	Doryanthes	H3 : Ama 1-2	Lomandra	H5 : Xan 5-26
Bulbostylis	H5 : Cyp 3	Dyrmophila	H4 : Lil 7-8		
				Mariscus	H3 : Cyp 66-67
Calectosia	H5 : Xan 3	Eleocharis	H3 : Cyp 24-25	Mesomelaena	H3 : Cyp 68-69
Canna	H3 : Can 1	Eriochlora	H4 : Poa 34-35		
Carex	H3 : Cyp 4-5	Eulalia	H4 : Poa 36	Oplismenus	H4 : Poa 42
Caustis	H3 : Cyp 6	Eurychordata	H5 : Res 5-6	Oryza	H5 : Poa 43-44
Cenchrus	H4 : Poa 14-17	Eustrephus	H4 : Phy 1-2		
Centotheca	H4 : Poa 18			Phormium	H3 : Aga 1-2
Centrolepis	H3 : Cen 1	Festuca	H4 : Poa 37-39	Phragmites	H4 : Poa 45-47
Chaetospora	H3 : Cyp 7-8	Fimbristylis	H3 : Cyp 26-32	Posidonia	H5 : Pos 1
Chloris	H4 : Poa 20	Flagellaria	H3 : Fla 1-3		
Chorizandra	H3 : Cyp 9	Fuirena	H3 : Cyp 33		
Cinna	H4 : Poa 19				
Cladium	H3 : Cyp 10-15	Gahnia	H3 : Cyp 34-47		
Coix	H4 : Poa 21				
Colladoa	H4 : Poa 22	Heteropogon	H4 : Poa 40		

INDEX OF GENUS NAMES (MONOCOTYLEDONES) [HERBARIUM H3 TO H5] (Continued)

Saccharum	H5 : Poa 48	Uniola	H5 : Poa 59	<i>Unidentified</i>
Schoenus	H3 : Cyp 70-77	Urochloea	H5 : Poa 60-63	
Scirpus	H3 : Cyp 82-89	Xanthorrhoea	H5 : Xan 27-28	
Smilax	H5 : Smi 1-5	Xerotes	H5 : Xan 30-32	
Sowerbeae	H4 : Lil 10-12	Xyris	H5 : Xyr 1-4	
Spinifex	H5 : Poa 49-54			
Sporobolus	H5 : Poa 58			
Stypendra	H4 : Lil 13-17			
Thysanotus	H4 : Lil 18-21			
Triglochin	H4 : Juc 1			
Tripsacum	H4 : Poa 30			

H3 : Aga 3, Cen 2, Cyp 50, 78-80, 90-96  
H4 : Jug 2, Lil 22-26, Phy 3, Poa 33  
H5 : Poa 55-57, 64-69, Smi : 6-7, Xan 27,  
Xyr 5

Angiospermae Monocotyledoneae I  
Agavaceae (Aga 1-Aga 3)



\**Phormium tenax*  
\*Port Jackson  
\*Collected by Guichenot

Barcode MNHN : P00298279



\**Phormium tenax*  
\*Port Jackson

Nota : Seed bag [label 3]

Barcode MNHN : P00298281



\*Unidentified Agavaceae  
\*Unknown locality  
\*Collected by Guichenot

Nota : capit. Baudin [on label]

Barcode MNHN : P00298280

Angiospermae Monocotyledoneae I  
Amaryllidaceae (Ama 1-Ama 2)



SPECIMEN A

SPECIMEN A

\**Doryanthes excelsa*  
\*Port Jackson

Nota : (1) In Leschenault's hand  
« [illegible] ; port jackson ; N°56 »  
[label 2] ; (2) Seed bag [label 3]

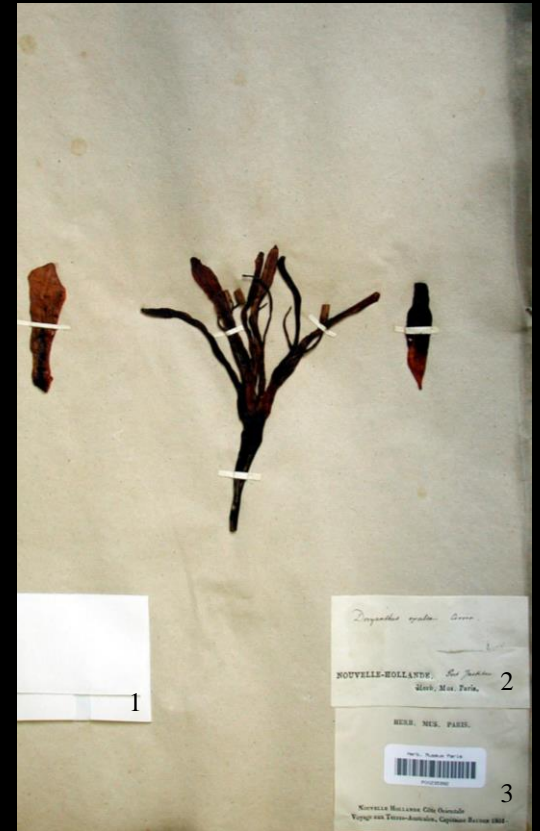
Barcode MNHN : P00235991

SPECIMEN B

\**Doryanthes excelsa*  
\*Port Jackson

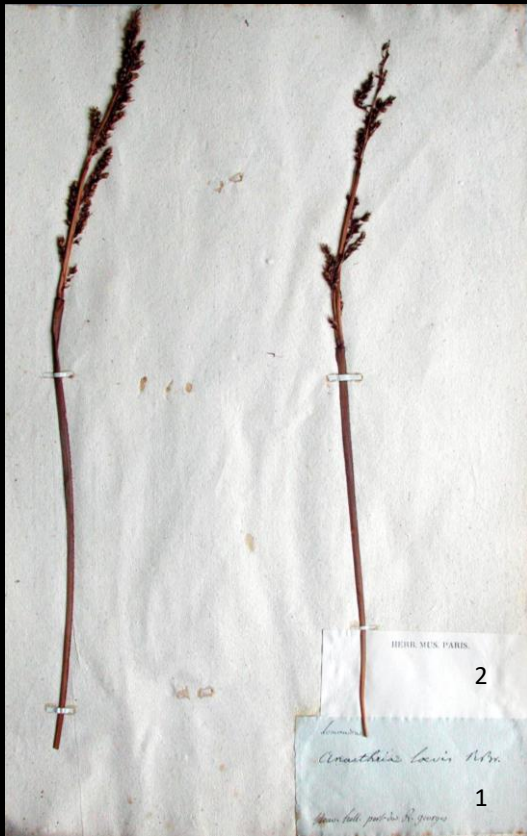
Nota : Seed bag [label 1]

Barcode MNHN : P00235992



SPECIMEN B

Angiospermae Monocotyledoneae I  
Anarthriaceae (Ana 1-Ana 3)



\**Anarthria laevis*  
\*King George Sound

Barcode MNHN : P00298199



\**Anarthria prolifera*  
\*King George Sound

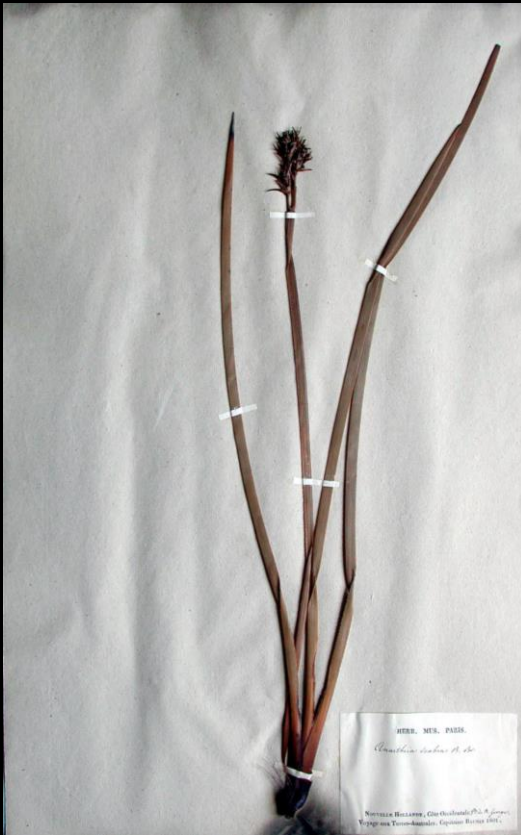
Barcode MNHN : P00298201



\**Anarthria prolifera*  
\*King George Sound

Barcode MNHN : P00298201

Angiospermae Monocotyledoneae I  
Anarthriaceae (Ana 4-Ana 5)



\**Anarthria scabra*  
\*King George Sound

Barcode MNHN : P00298204



\**Anarthria scabra*  
\*King George Sound

Nota : (1) In Leschenault's hand  
« macrogynum pleurum ; port du roi  
george 3 ; N°106 » [label 2] ; (2) In  
Guichenot's hand, see opposite [label 1]

Barcode MNHN : P00298202

*Anarthria scabra*

Guichenot's text

Original. espaisse de gont s'élevant de [déchiré] piest de taier il croix sur laiest montagne sur un terient ingra rée couttée aux pourre du roi gourage

Français. Espèce de jonc s'élevant de [déchiré] pieds de terre. Elle croît dans les montagnes sur un terrain ingrat. Récoltée au port de Roi George.

English. Species of rush reaching [torn] feet in height. It grows in the mountains on barren ground. Collected in King George Sound.



Angiospermae Monocotyledoneae I  
Anarthriaceae (Ana 6)



SPECIMEN A

SPECIMEN A

\**Anarthia scabra*

\*King George Sound

Nota : In Leschenault's hand  
« *Macrogynum pleurum* ; port du roi  
george 3 ; N° 106 » [label 2]

Barcode MNHN : P00298203

SPECIMEN B

\**Canna indica*

\*Timor

Nota : (1) Revised by Reichan,  
1969, as *Canna coccinea* [label 3] ;  
(2) Revised by Tanaka, 1980, as  
*Canna indica* [label 4]

Barcode MNHN : P00230001

Cannaceae (Can 1)



SPECIMEN B

# Angiospermae Monocotyledoneae I

## Centrolepidaceae (Cen 1-Cen 2)



\**Centrolepis fascicularis*  
\*Port Jackson

Barcode MNHN : P00298139



\*Unidentified *Centrolepis*  
\*King Island

Barcode MNHN : P00298140

## Commelinaceae (Com 1)

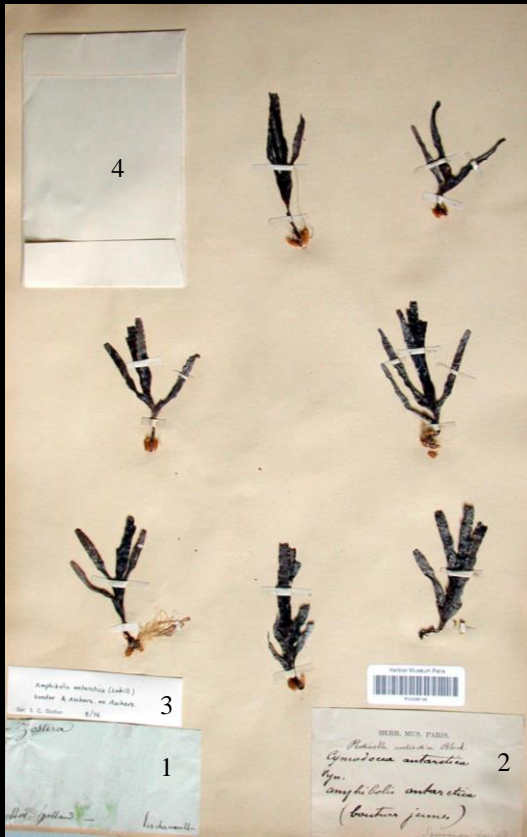


\**Commelina auriculata*  
\*West coast

Nota : Seed bag [label 3]

Barcode MNHN : P00298210

Angiospermae Monocotyledoneae I  
 Cymodoceaceae (Cym 1)      Cyperaceae (Cyp 1-Cyp 2)



\**Amphibolis antarctica*  
 \*West coast  
 \*Collected by Leschenault

Nota : (1) Revised by Ducker, 1976  
 [label 3] ; (2) Seed bag [label 4]

Barcode MNHN : P00298146



\**Arthrostylis aphylla*  
 \*Port Jackson

Barcode MNHN : P00828110



\**Arthrostylis aphylla*  
 \*Port Jackson

Barcode MNHN : P00298111

Angiospermae Monocotyledoneae I  
Cyperaceae (Cyp 3-Cyp 5)



\**Bulbostylis barbata*  
\*Timor

Nota : (1) Revised by Clarke, 1888  
[label 2] ; (2) Revised by Kern,  
1955 [label 3]

Barcode MNHN : P00298168



\**Carex appressa*  
\*King Island  
\*Collected by Leschenault

Barcode MNHN : P00298194



\**Carex fascicularis*  
\*Port Jackson  
\*Collected by Leschenault

Barcode MNHN : P00298153

# Angiospermae Monocotyledoneae I Cyperaceae (Cyp 6-Cyp 8)



\**Caustis flexuosa*  
\*Port Jackson

Barcode MNHN : P00298193



\**Chaetospora curvifolia*  
\*King George Sound

Barcode MNHN : P00298103

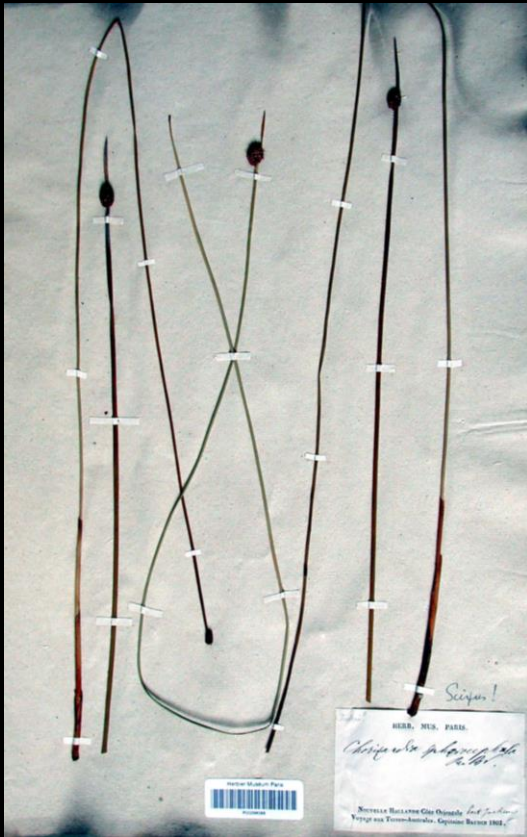


\**Chaetospora curvifolia*  
\*West coast

Barcode MNHN : P00298104

# Angiospermae Monocotyledoneae I

## Cyperaceae (Cyp 9-Cyp 11)



\**Chorizandra sphaerocephala*  
\*Port Jackson

Barcode MNHN : P00298088



\**Cladium junceum*  
\*Maria Island

Barcode MNHN : P00298121



\**Cladium junceum*  
\*d'Entrecasteaux Channel

Barcode MNHN : P00298120

Angiospermae Monocotyledoneae I  
Cyperaceae (Cyp 12-Cyp 14)



\**Cladium riparium*  
\*Port Jackson

Barcode MNHN : P00298128



\**Cladium riparium*  
\*Port Jackson

Barcode MNHN : P00298123



\**Cladium riparium*  
\*Port Jackson

Barcode MNHN : P00298124

Angiospermae Monocotyledoneae I  
Cyperaceae (Cyp 15-Cyp 17)



\**Cladium riparium*  
\*Port Jackson

Barcode MNHN : P00298122



\**Cyperus alopecuroides*  
\*Timor

Barcode MNHN : P00298195



\**Cyperus difformis*  
\*Timor

Barcode MNHN : P00298196



Angiospermae Monocotyledoneae I  
Cyperaceae (Cyp 18-Cyp 20)



\**Cyperus divaricatus*  
\*Timor

Barcode MNHN : P00298165



\**Cyperus ferax*  
\*Timor

Barcode MNHN : P00298077



\**Cyperus lucidus*  
\*Timor

Barcode MNHN : P00298075

Angiospermae Monocotyledoneae I  
Cyperaceae (Cyp 21-Cyp 23)



\**Cyperus lucidus*  
\*Port Jackson

Barcode MNHN: P00298076



\**Cyperus rotundus*  
\*Timor

Nota : Revised by Kern, 1957 [label 3]

Barcode MNHN : P00298133



\**Cyperus vulgaris*  
\*Timor

Barcode MNHN : P00298164

# Angiospermae Monocotyledoneae I

## Cyperaceae (Cyp 24-Cyp 26)



\**Eleocharis capitata*  
 \*Timor  
 \*Collected by Leschenault

Nota : Revised by Clarke, 1888 [label 2]

Barcode MNHN : P00298081



\**Eleocharis capitata*  
 \*Timor  
 \*Collected by Leschenault

Nota : Revised by Clarke, 1888 [label 2]

Barcode MNHN : P00298082



\**Fimbristylis bisumbellata*  
 \*West coast  
 \*Collected by Leschenault

Nota : Revised by Kern, 1955 [label 4]

Barcode MNHN : P00298166

Angiospermae Monocotyledoneae I  
Cyperaceae (Cyp 27-Cyp 29)



TYPE

\**Fimbristylis calocarpa*

\*Timor

\*Collected by Leschenault

Nota : Revised by Blake, 1965 (isotype of *F. fimbristylis*) [label 5]

Barcode MNHN : P00298084



\**Fimbristylis complanata*

\*Timor

Nota : Revised by Clarke, 1888  
[label 2]

Barcode MNHN : P00298167



TYPE

\**Fimbristylis dichotoma*

\*Timor

\*Collected by Leschenault

Nota : Revised by Kern, 1955 (isotype of *F. dichotoma*) [label 4]

Barcode MNHN : P00298085

Angiospermae Monocotyledoneae I  
Cyperaceae (Cyp 30-Cyp 32)



TYPE

\**Fimbristylis dichotoma*

\*Timor

\*Collected by Leschenault

Nota : Revised by Kern, 1955  
(isotype of *F. dichotoma*) [label 4]

Barcode MNHN : P00298083



\**Fimbristylis sieberiana*

\*Timor

\*Collected by Leschenault

Nota : Revised by Kern, 1955 [label  
3]

Barcode MNHN : P00298086



\**Fimbristylis sieberiana*

\*Timor

\*Collected by Leschenault

Nota : Revised by Kern, 1955 [label  
3]

Barcode MNHN : P00298087

# Angiospermae Monocotyledoneae I Cyperaceae (Cyp 33-Cyp 35)



- \**Fuirena ciliaris*
- \*Timor
- \*Collected by Leschenault

Nota : Revised by Kern, 1957 [label 3]

Barcode MNHN : P00298097



- \**Gahnia aspera*
- \*Blue Mountains
- \*Collected by Leschenault

Nota : Revised by Beul, 1945 [label 3]

Barcode MNHN : P00298142



- \**Gahnia clarki*
- \*Port Jackson
- \*Collected by Leschenault

Nota : Revised by Raynal, 1972 [label 2]

Barcode MNHN : P00298184

# Angiospermae Monocotyledoneae I Cyperaceae (Cyp 36-Cyp 38)



\**Gahnia clarki*  
\*Port Jackson  
\*Collected by Leschenault

Nota : Revised by Beul, 1939 [label 2]

Barcode MNHN : P00298185



\**Gahnia clarki*  
\*Port Jackson

Nota : Revised by Raynal, 1972  
[label 2]

Barcode MNHN : P00298186



\**Gahnia erythrocarpa*  
\*Port Jackson  
\*Collected by Leschenault

Nota : Revised by [illegible], 1972 [label 2]

Barcode MNHN : P00298151

Angiospermae Monocotyledoneae I  
Cyperaceae (Cyp 39-Cyp 41)



\**Gahnia melanocarpa*  
\*South coast

Nota : Revised by Beul, 1939 [label 2]

Barcode MNHN : P00298143



\**Gahnia psittacorum*  
\*Port Jackson  
\*Collected by Leschenault

Barcode MNHN : P00298129



\**Gahnia trifida*  
\*d'Entrecasteaux Channel  
\*Collected by Leschenault

Barcode MNHN : P00298187



Angiospermae Monocotyledoneae I  
Cyperaceae (Cyp 42-Cyp 44)



\**Gahnia trifida*  
\*Geographe Bay

Barcode MNHN : P00298188



\**Gahnia trifida*  
\*Port Jackson

Barcode MNHN : P00298190



\**Gahnia trifida*  
\*Port Jackson

Barcode MNHN : P00298191

Angiospermae Monocotyledoneae I  
Cyperaceae (Cyp 45-Cyp 47)



\**Gahnia trifida*  
\*West coast

Barcode MNHN : P00298192



\**Gahnia trifida*  
\*d'Entrecasteaux Channel

Barcode MNHN : P00298141



*Gahnia trifida*  
d'Entrecasteaux Channel

Nota : Revised by Beul, 1945 [label 3]

Barcode MNHN : P00298189

Angiospermae Monocotyledoneae I  
Cyperaceae (Cyp 48-Cyp 50)



\**Isolepis nodosa*

\*Maria Island

Barcode MNHN : P00298093



\*Unidentified *Isolepis*

\*Blue Mountains

\*Collected by Leschenault

Barcode MNHN : P00298089



\**Kyllinga brevifolia*

\*Timor

\*Collected by Leschenault

Nota : Revised by Clarke, 1888 [label 2]

Barcode MNHN : P00298079

# Angiospermae Monocotyledoneae I

## Cyperaceae (Cyp 51-Cyp 53)



\**Kyllingia monocephala*  
 \*Timor  
 \*Collected by Leschenault

Barcode MNHN : P00298078



\**Kyllingia monocephala*  
 \*Timor  
 \*Collected by Leschenault

Nota : Revised by Clarke, 1888 [label 2]

Barcode MNHN : P00298080



\**Lampocarya aspera*  
 \*d'Entrecasteaux Channel  
 \*Collected by Leschenault

Barcode MNHN : P00298152

Angiospermae Monocotyledoneae I  
Cyperaceae (Cyp 54-Cyp 56)



- \**Lepidosperma angustatum*
- \*Unknown locality
- \*Collected by Leschenault

Nota : In Leschenault's hand « N° 29  
; *Lepidosperma* ? » [label 1]

Barcode MNHN : P00298115



- \**Lepidosperma angustatum*
- \*West coast

Barcode MNHN : P00298113



- \**Lepidosperma angustatum*
- \*West coast

Barcode MNHN : P00298114

Angiospermae Monocotyledoneae I  
Cyperaceae( Cyp 57-Cyp 59)



\**Lepidosperma elatius*  
\*Port Jackson  
\*Collected by Leschenault

Barcode MNHN : P00298118



\**Lepidosperma elatius*  
\*King Island  
\*Collected by Leschenault

Barcode MNHN : P00298127



\**Lepidosperma elatius*  
\*d'Entrecasteaux Channel  
\*Collected by Leschenault

Barcode MNHN : P00298116

Angiospermae Monocotyledoneae I  
Cyperaceae (Cyp 60-Cyp 62)



\**Lepidosperma elatius*  
\*d'Entrecasteaux Channel

Barcode MNHN : P00298117



\**Lepidosperma gladiata*  
\*West coast  
\*Collected by Leschenault

Barcode MNHN : P00298180



\**Lepidosperma gladiata*  
\*King George Sound  
\*Collected by Guichenot

Barcode MNHN : P00298181

# Angiospermae Monocotyledoneae I

## Cyperaceae (Cyp 63-Cyp 65)



\**Lepidosperma longitudinalis*  
 \*Van Diemen's Land  
 \*Collected by Leschenault

Barcode MNHN : P00298126



\**Lepidosperma squamata*  
 \*Van Diemen's Land  
 \*Collected by Leschenault

Barcode MNHN : P00298182



TYPE ?  
 \**Lepidosperma squamata*  
 \*Van Diemen's Land  
 \*Collected by Leschenault

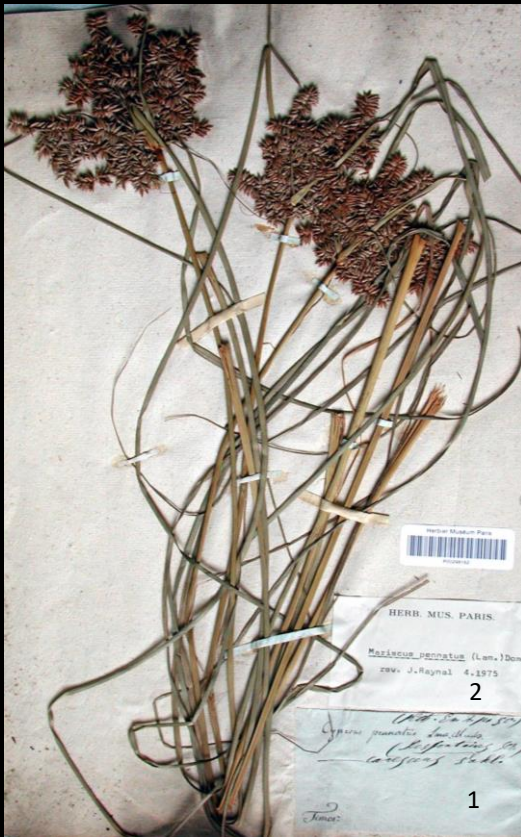
Nota : Revised by Wilson, 1983 (an isotype of *Lepidosperma squamata* ; the specimen is not a Tasmanian sp) [label 2]

Barcode MNHN : P00298183



# Angiospermae Monocotyledoneae I

## Cyperaceae (Cyp 66-Cyp 68)



\**Mariscus pennatus*  
\*Timor

Nota : Revised by Raynal, 1975 [label 2]

Barcode MNHN : P00298162



\**Mariscus pennatus*  
\*Timor  
\*Collected by Leschenault

Nota : Revised by Raynal, 1975 [label 3]

Barcode MNHN : P00298163



\**Mesomelaena tetragona*  
\*King George Sound

Barcode MNHN : P00298174

Angiospermae Monocotyledoneae I  
Cyperaceae (Cyp 69-Cyp 71)



\**Mesomelaena tetragona*  
\*King George Sound

Barcode MNHN : P00298175



\**Schoenus brevifolius*  
\*Port Jackson  
\*Collected by Leschenault

Barcode MNHN : P00298173



\**Schoenus brownii*  
\*Port Jackson

Barcode MNHN : P00298100

Angiospermae Monocotyledoneae I  
Cyperaceae (Cyp 72-Cyp 74)



\**Schoenus brownii*  
\*Port Jackson

Barcode MNHN : P00298101



\**Schoenus ericetorum*  
\*Port Jackson

Nota : Revised by Wilson, 1977 [label 2]

Barcode MNHN : P00298105



\**Schoenus ericetorum*  
\*Port Jackson

Nota : Revised by Wilson, 1977 [label 2]

Barcode MNHN : P00298106

Angiospermae Monocotyledoneae I  
Cyperaceae (Cyp 75-Cyp 77 )



\**Schoenus ericetorum*  
\*Port Jackson

Nota : Revised by Wilson, 1977 [label 3]

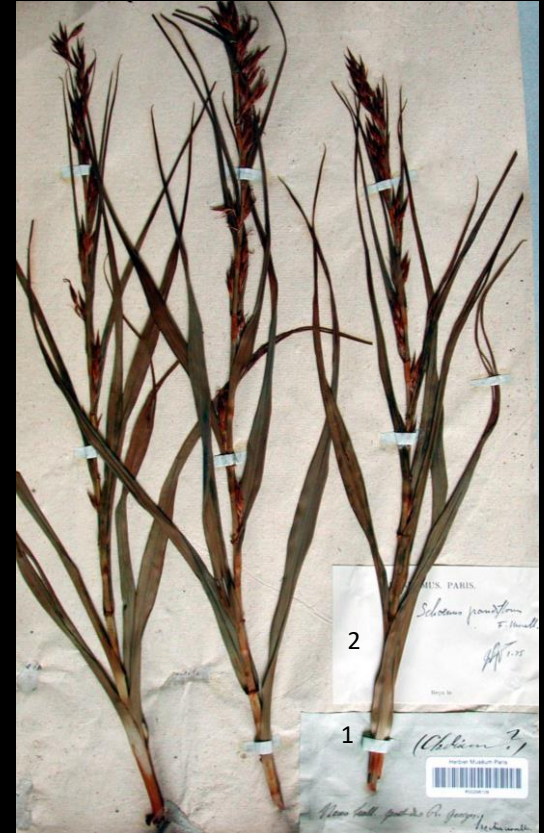
Barcode MNHN : P00298107



\**Schoenus grandiflorus*  
\*West coast

Nota : Revised by [illegible], 1975

Barcode MNHN : P00298108



\**Schoenus grandiflorus*  
\*King George Sound  
\*Collected by Leschenault

Nota : Revised by [illegible], 1975 [label 2]

Barcode MNHN : P00298109

# Angiospermae Monocotyledoneae I

## Cyperaceae (Cyp 78-Cyp 79)



*Schoenus* sp

Guichenot's text

Original. espaisse de gont trai pétiest  
il croix sur laiest montagne  
Rée couttée aux pourre duroigorge

Français. Espèce de jonc très petit. Il  
croît sur les montagnes.  
Récolté au port du Roi George.

English. Species of very small rush.  
It grows in the mountains.  
Collected in King George Sound.



\*Unidentified *Schoenus*

\*West coast

Barcode MNHN : P00298099

\*Unidentified *Schoenus*

\*King George Sound

Nota : In Guichenot's hand, see opposite [label  
2]

Barcode MNHN : P00298098

Angiospermae Monocotyledoneae I  
Cyperaceae (Cyp 80-Cyp 83)



\*Unidentified *Schoenus*  
\*King George Sound

Barcode MNHN : P00298179



\**Scirpus debilis*  
\*Timor  
\*Collected by Leschenault

Nota : Revised by Clarke, 1888 [label 3]

Barcode MNHN : P00298170



\**Scirpus holoschoenus* var. *australis*  
\*d'Entrecasteaux Channel  
\*Collected by Leschenault

Barcode MNHN : P00298090

# Angiospermae Monocotyledoneae I

## Cyperaceae (Cyp 84-Cyp 86)



\**Scirpus inundatus*  
 \*Port Jackson  
 \*Collected by Leschenault

Nota : Revised by Clarke, 1888 [label 2]

Barcode MNHN : P00298172



\**Scirpus juncooides*  
 \*Timor  
 \*Collected by Leschenault

Nota : Revised by Kern, 1957 [label 3]

Barcode MNHN : P00298171



\**Scirpus luzonensis*  
 \*Timor  
 \*Collected by Riedlé

Barcode MNHN : P00298169

Angiospermae Monocotyledoneae I  
Cyperaceae (Cyp 87-Cyp 89)



\**Scirpus mucronatus*  
\*Timor  
\*Collected by Leschenault

Nota : (1) Revised by Clarke, 1888 [label 2] ; (2) Revised by Kern, 1957 [label 4]

Barcode MNHN : P00298094



\**Scirpus mucronatus*  
\*Timor  
\*Collected by Leschenault

Nota : (1) Revised by Clarke, 1888 [label 2] ; (2) Revised by Kern, 1957 [label 4]

Barcode MNHN : P00298095



\**Scirpus mucronatus*  
\*Timor  
\*Collected by Leschenault

Nota : Revised by Clarke, 1888 [label 1]

Barcode MNHN : P00298096



Angiospermae Monocotyledoneae I  
Cyperaceae (Cyp 90-Cyp 92)



- \*Unidentified Cyperaceae
- \*Geographe Bay
- \*Collected by Leschenault

Barcode MNHN : P00298091



- \*Unidentified Cyperaceae
- \*Port Jackson
- \*Collected by Leschenault

Barcode MNHN : P00298102



- \*Unidentified Cyperaceae
- \*Unknown locality
- \*Collected by Guichenot

Barcode MNHN : P00298119

# Angiospermae Monocotyledoneae I Cyperaceae (Cyp 93-Cyp 95)



\*Unidentified Cyperaceae  
\*Geographe Bay

Barcode MNHN : P00298177



\*Unidentified Cyperaceae  
\*Swan River

Barcode MNHN : P00298178



\*Unidentified Cyperaceae  
\*West coast  
\*Collected by Leschenault

Barcode MNHN : P00298130

Angiospermae Monocotyledoneae I  
Cyperaceae (Cyp 96-Cyp 97)



\*Unidentified Cyperaceae  
\*West coast  
\*Collected by Leschenault

Barcode MNHN : P00298131



\*Unidentified Cyperaceae  
\*d'Entrecasteaux Channel

Barcode MNHN : P00298132

(Flagellariaceae Fla 1)



\**Flagellaria indica*  
\*Timor

Nota : Seed bag [label 2]

Barcode MNHN : P00298207

Angiospermae Monocotyledoneae I  
Flagellariaceae (Fla 2-Fla 3)



\**Flagellaria indica*  
\*North coast

Barcode MNHN : P00298208



\**Flagellaria indica*  
\*North coast abeam Timor

Nota : In Guichenot's hand, see  
opposite [label 1]

Barcode MNHN : P00298209

*Flagellaria indica*

Guichenot's text

Original. plantre cée leuwant de 4 et  
5 piest de taier cette plante croix  
sur laiest téreint piereux et umide  
Rée couttée parre le travaire de  
thimour sur lanouvelle ôlande

Français. Plante s'élevant de 4 à 5  
piet de terre. Cette plante croît sur  
les terrains pierreux et humides.  
Récoltée par le travers de Timor sur  
la Nouvelle Hollande.

English. Plant reaching 4 to 5 feet in  
height. This plant grows on wet and  
stony grounds.  
Collected in New Holland abeam of  
Timor.