

ANGIOSPERMAE
DICOTYLEDONEAE
ASTERIDAE III

Asteraceae part 3 (*Sphaeranthus* to *Xeranthemum*)
to
Goodeniaceae

Angiospermae Dicotyledonae Asteridae III
Asteraceae (Ast 137-Ast 139)



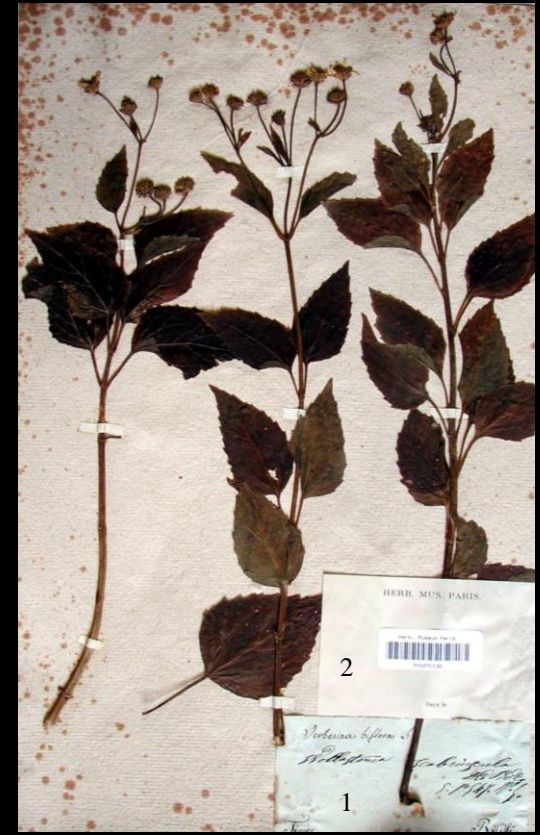
**Sphaeranthus microcephalus*
*Timor

Barcode MNHN : P00291849



**Sphaeranthus microcephalus*
*Timor
*Collected by Leschenault

Barcode MNHN : P00291850



**Verbesina biflora*
*Timor
*Collected by Riedlé

Barcode MNHN : P00270136

Angiospermae Dicotyledonae Asteridae III
Asteraceae (Ast 140-Ast 142)



**Vernonia erigeroides*
*Timor
*Collected by Riedlé

Barcode MNHN : P00291859



**Vernonia erigeroides*
*Barren Islands

Barcode MNHN : P00291858



**Vernonia erigeroides*
*Timor

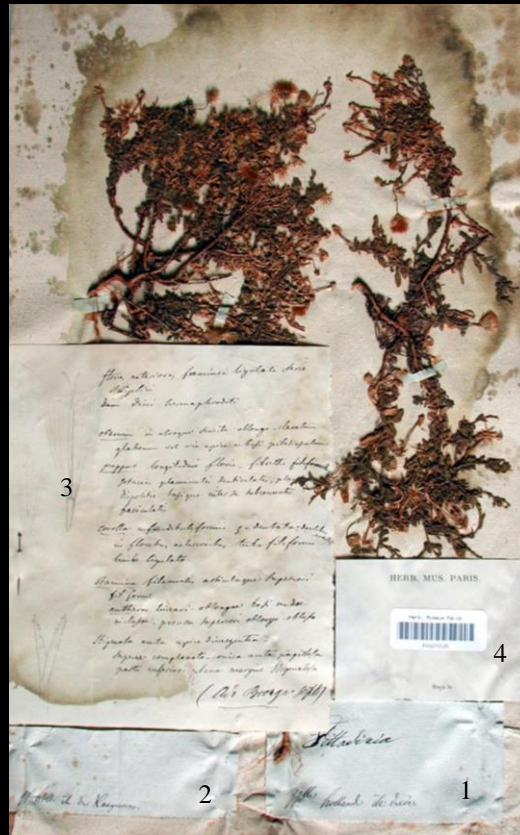
Barcode MNHN : P00291857

Angiospermae Dicotyledonae Asteridae III
Asteraceae (Ast 143-Ast 144)



**Vernonia prolifera*
*Timor

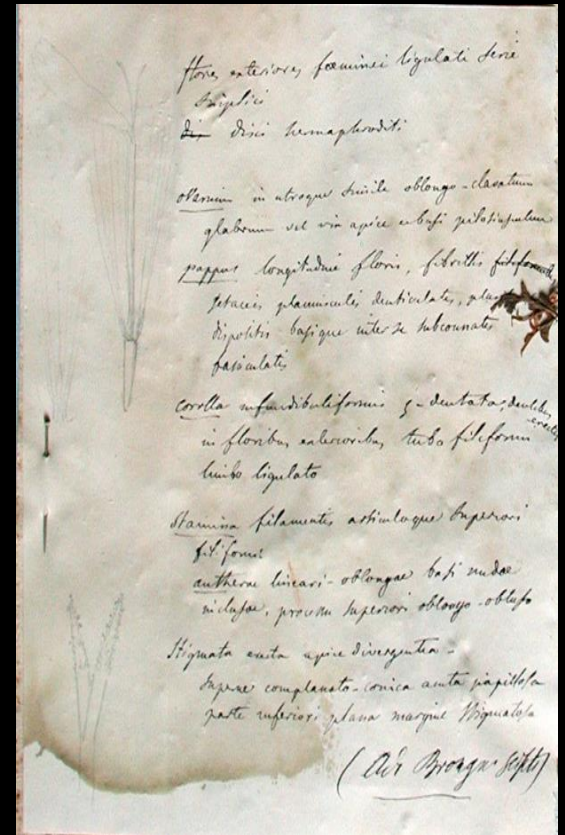
Barcode MNHN : P00291856



*Unidentified *Vittadinia*
*Kangaroo Island

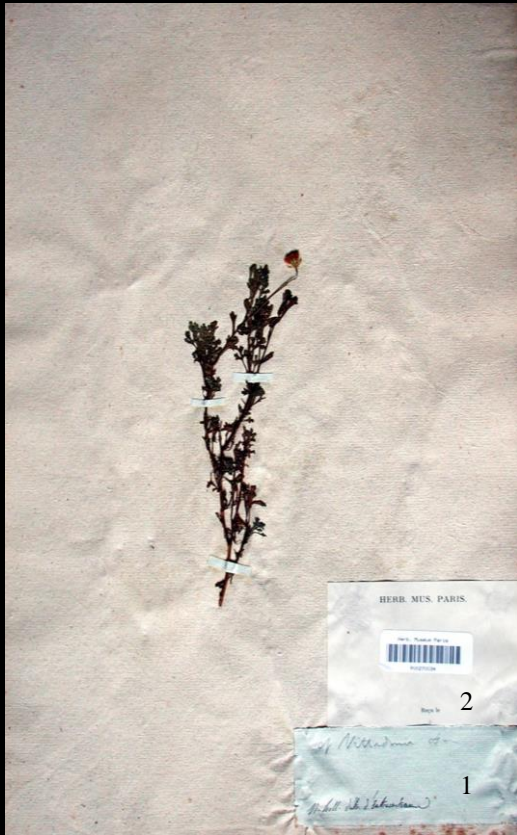
Nota : Text by Brongniart, see
opposite [label 3]

Barcode MNHN : P00270035



Adolphe Brongniart scripsit

Angiospermae Dicotyledonae Asteridae III
Asteraceae (Ast 145-Ast 147)



*Unidentified *Vittadinia*
*d'Entrecasteaux Channel

Barcode MNHN : P00270034



*Unidentified *Vittadinia*
*East coast

Barcode MNHN : P00270036



**Wollastonia scabrinscula* var. *glabrata*
*Timor

Barcode MNHN : P00270137

Angiospermae Dicotyledonae Asteridae III
Asteraceae (Ast 148-Ast 149)



**Xeranthemum bracteatum*
*Port Jackson

Barcode MNHN : P00291817



**Xeranthemum bracteatum*
*Bass Strait & d'Entrecasteaux
Channel

Nota : In Guichenot's hand, see
opposite [label 2]

Barcode MNHN : P00291819

Xeranthemum bracteatum

Guichenot's text

Original. Y mourtelle à fleur gaune
cette imourtelle croix à bondamand
part oute aux detroix danddré castaux
Rée couttée aux dée touist dandrée
castaux

Français. Immortelle à fleurs jaunes.
Cette immortelle croît abondamment
partout au détroit d'Entrecasteaux.
Récoltée au détroit d'Entrecasteaux.

English. Everlasting daisy with yellow
flowers. This everlasting daisy grows
abundantly along the d'Entrecasteaux
Channel.
Collected in the d'Entrecasteaux
Channel.

Angiospermae Dicotyledonae Asteridae III
Asteraceae (Ast 150-Ast 151)



*Unidentified Asteraceae
*King Island

Barcode MNHN : P00291834



*Unidentified Asteraceae
*Kangaroo Island

Barcode MNHN : P00262356

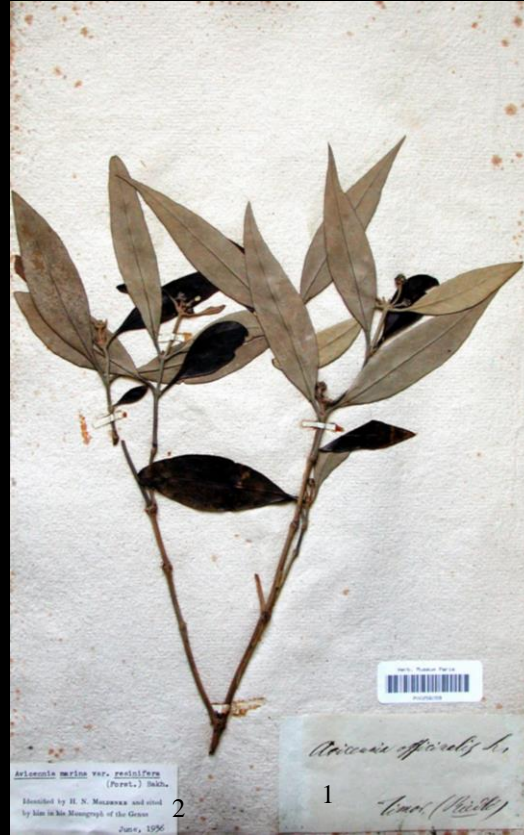
Angiospermae Dicotyledonae Asteridae III
 Avicenniaceae (Avi 1-Avi 3)



**Avicennia marina* var. *resinifera*
 *d'Entrecasteaux Channel

Nota : Revised by Moldenke, 1936 [label 2]

Barcode MNHN : P00256058



**Avicennia marina* var. *resinifera*
 *Timor
 *Collected by Riedlé

Nota : Revised by Moldenke, 1936 [label 2]

Barcode MNHN : P00256059



**Avicennia marina* var. *resinifera*
 *Timor
 *Collected by Riedlé

Nota : Revised by Moldenke, 1936 [label 2]

Barcode MNHN : P00256060

Angiospermae Dicotyledonae Asteridae III
 Avicenniaceae (Avi 4-Avi 5)



**Avicennia marina* var. *resinifera*
 *Timor

Nota : Revised by Moldenke, 1936
 [label 3]

Barcode MNHN : P00256062

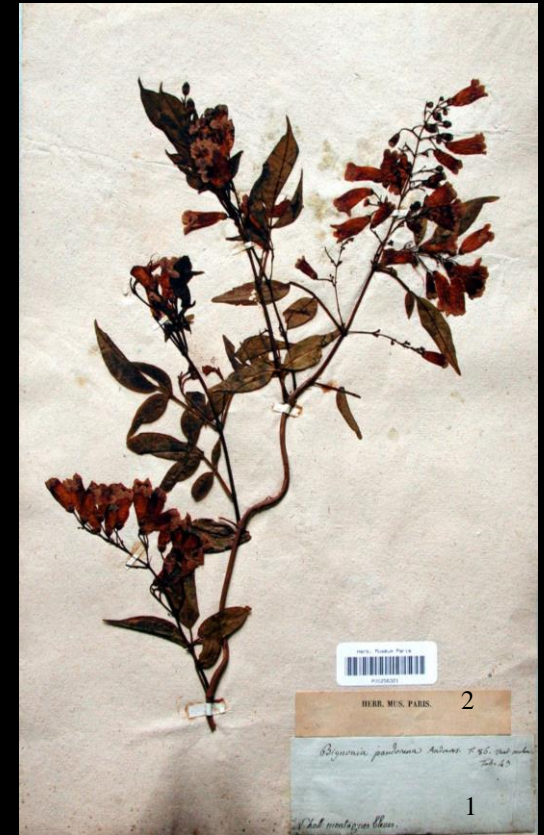


**Avicennia marina* var. *resinifera*
 *Bass Strait

Nota : Revised by Moldenke, 1936
 [label 3]

Barcode MNHN : P00256061

Bignoniaceae (Big 1)



**Bignonia pandorana*
 *Blue Mountains

Barcode MNHN : P00256321

Angiospermae Dicotyledonae Asteridae III
Bignoniaceae (Big 2-Big 3)



**Tecoma pandorana*

*Port Jackson

Nota : (1) In Leschenault's hand
« quevaquila ; Bignonia ; N°68 ; port
jackson » [label 1] ; (2) In Guichenot's
hand, see opposite [label 2] ; (2) Seed bag
[label 5]

Barcode MNHN : P00256322

Tecoma pandorea

Guichenot's text

Original. espaisse de liagne cée leuuant
de 7 à 9 piest de tairre à fleurs rouges
cette liagne croix sur une taiere
[illegible] et à lonbre.

Rée couttée aux pourre gassionne

Français. Espèce de liane s'élevant de
7 à 8 pieds de terre, à fleurs roses. Cette
liane croît à l'ombre sur une terre
[illisible].

Récoltée au port Jackson.

English. Species of vine reaching 7 to 8
feet in height, with pink flowers. This
liana grows in the shade on [illegible]
soil, Collected in Port Jackson.



**Tecoma pandorana*

*Port Jackson

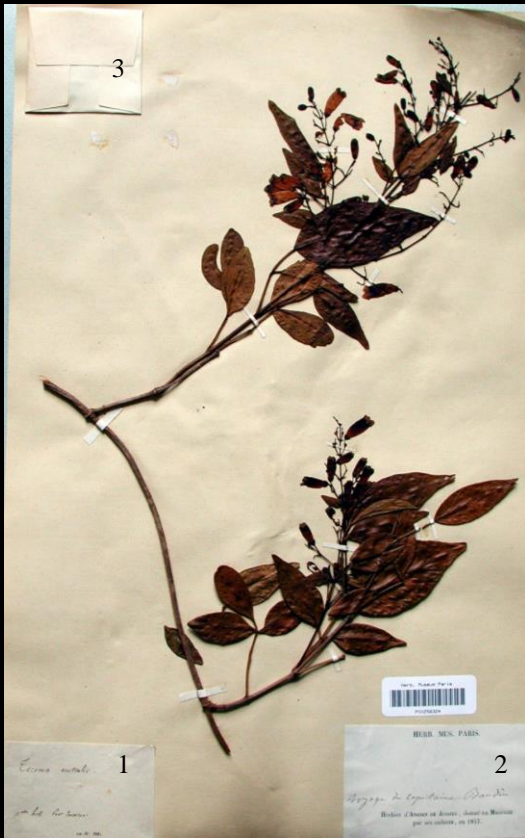
Nota : Seed bag [label 3]

Barcode MNHN : P00256323

Angiospermae Dicotyledonae Asteridae III

Bignoniaceae (Big 4)

Boraginaceae (Bor 1)



**Tecoma australis*

*Port Jackson

Nota : Seed bag [label 3]

Barcode MNHN : P00256324



*Unidentified *Trichodesma*

*Barren Islands

Barcode MNHN : P00256350

Angiospermae Dicotyledonae Asteridae III
Campanulaceae (Cam 1-Cam 3)



**Lobelia alata*
*King George Sound

Nota : In Leschenault's hand
« lobelia debilis ; port du Roi
George 3, N°62 » [label 1]

Barcode MNHN : P00256236



**Lobelia alata*
*d'Entrecasteaux Channel

Barcode MNHN : P00256237



**Lobelia alata*
*d'Entrecasteaux Channel

Barcode MNHN : P00256238

Angiospermae Dicotyledonae Asteridae III
Campanulaceae (Cam 4-Cam 5)



**Lobelia alata*
*Maria Island

Barcode MNHN : P00256239



**Lobelia anceps*
*King George Sound

Nota : In Guichenot's hand, see
opposite [label 2]

Barcode MNHN : P00256240

Lobelia anceps

Guichenot's text

Original. plante erbacée cette plante
croix dant laist endroit umide
rée couttée aux dée troix d'andré
castaux

Français. Plante herbacée. Cette plante
croît dans les endroits humides.
Récoltée au détroit d'Entrecasteaux.

English. Herbaceous plant. This plant
grows in damp places.
Collected in the d'Entrecasteaux
Channel.

Angiospermae Dicotyledonae Asteridae III
Campanulaceae (Cam 6-Cam 8)



**Lobelia decurrens*
*d'Entrecasteaux Channel

Barcode MNHN : P00256241



**Lobelia dentata*
*d'Entrecasteaux Channel

Barcode MNHN : P00256247



**Lobelia gibbosa*
*Port Jackson

Barcode MNHN : P00256243

Angiospermae Dicotyledonae Asteridae III
Campanulaceae (Cam 9-Cam 11)



**Lobelia gibbosa*
*d'Entrecasteaux Channel

Barcode MNHN : P00256242



**Lobelia gracilis*
*Blue Mountains

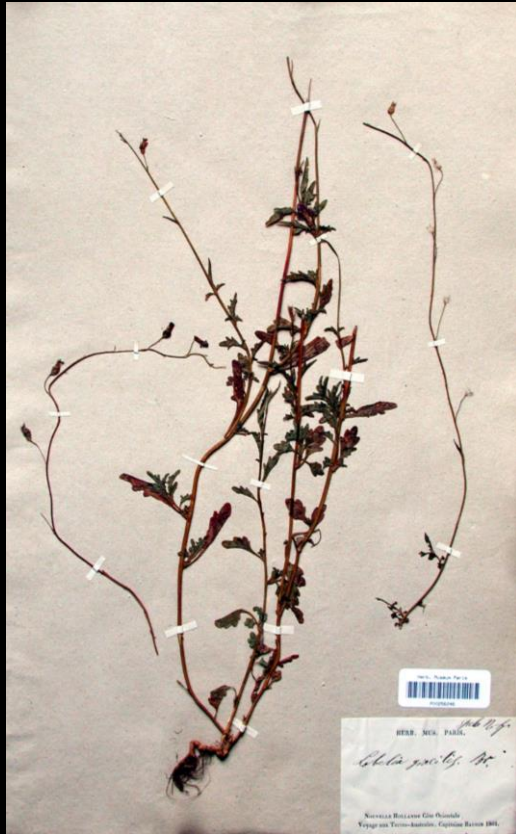
Barcode MNHN : P00256244



**Lobelia gracilis*
*Port Jackson

Barcode MNHN : P00256245

Angiospermae Dicotyledonae Asteridae III
Campanulaceae (Cam 12-Cam 13)



**Lobelia gracilis*
*East coast

Barcode MNHN : P00256246



**Lobelia heterophylla*
*King George Sound

Nota : In Guichenot's hand, see opposite [label 2]

Barcode MNHN : P00256248

Lobelia heterophylla

Guichenot's text

Original. plante céleuvant de 5 et 6
pousse de taier cette plante croix
sur laiest sabre pourte une fleur
bleux

Rée couttées aux pourre du roi
gourge

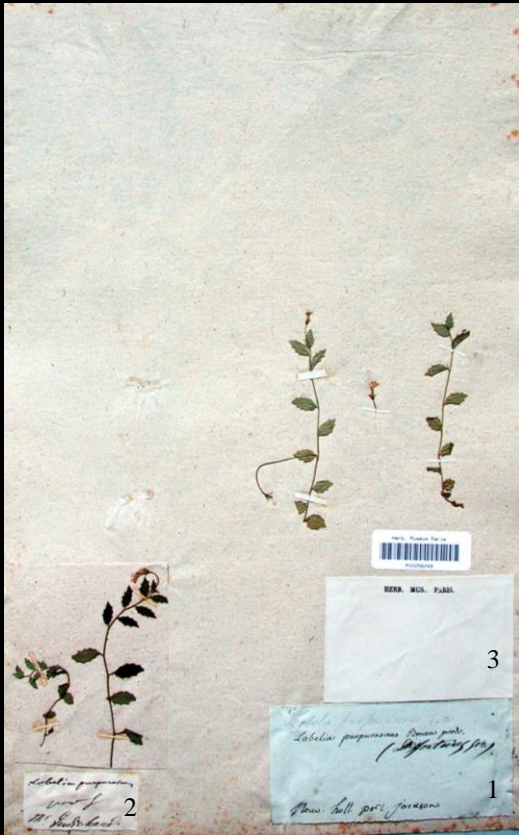
Français. Plante s'élevant de 5 à 6
pouces de terre. Cette plante croît
sur les sables. Porte une fleur
bleue.

Récoltée au port du Roi George.

English. Plant reaching 5 to 6
inches in height. This plant grows
on sand. Has a blue flower.

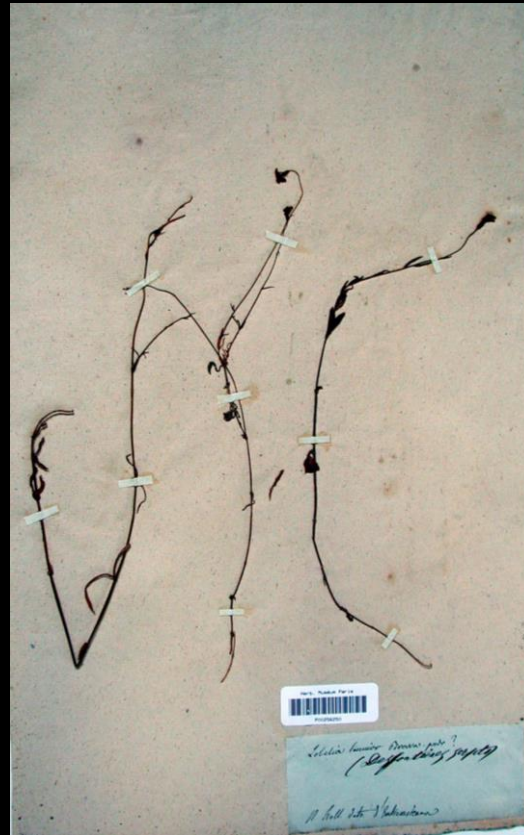
Collected in King George Sound.

Angiospermae Dicotyledonae Asteridae III
Campanulaceae (Cam 14-Cam 16)



**Lobelia purpurascens*
*Port Jackson

Barcode MNHN : P00256249



**Lobelia tenuior*
*d'Entrecasteaux Channel

Barcode MNHN : P00256250

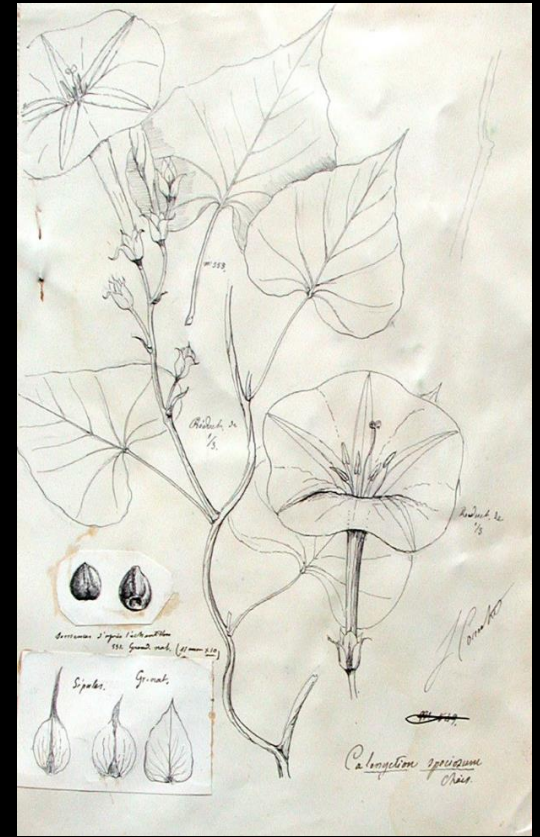
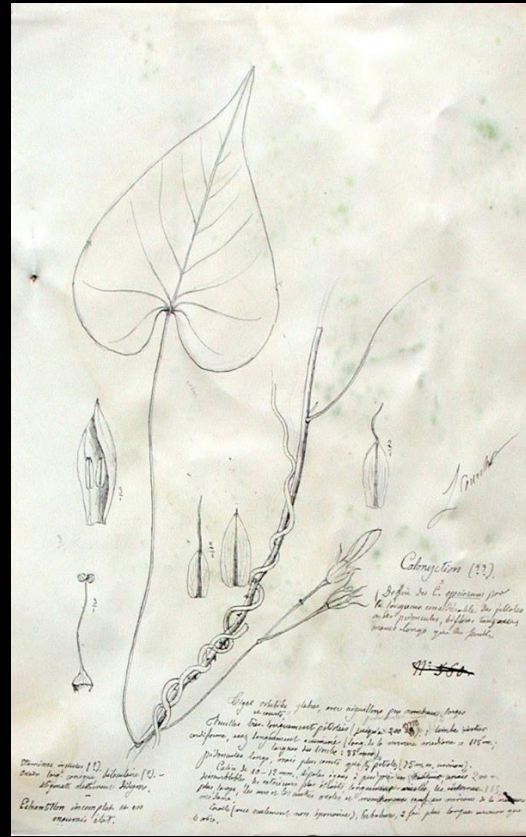


**Wahlenbergia bicolor*
*Port Jackson

Nota : Revised by Carolin, 1962
[label 3]

Barcode MNHN : P00256251

Angiospermae Dicotyledonae Asteridae III
 Convolvulaceae (Con 2)



- **Calonyction speciosum*
- *Timor
- *Collected by Riedlé

Drawings associated with *C. speciosum* (P00256353)

Drawings associated with *C. speciosum* (P00256353)

Barcode MNHN : P00256353

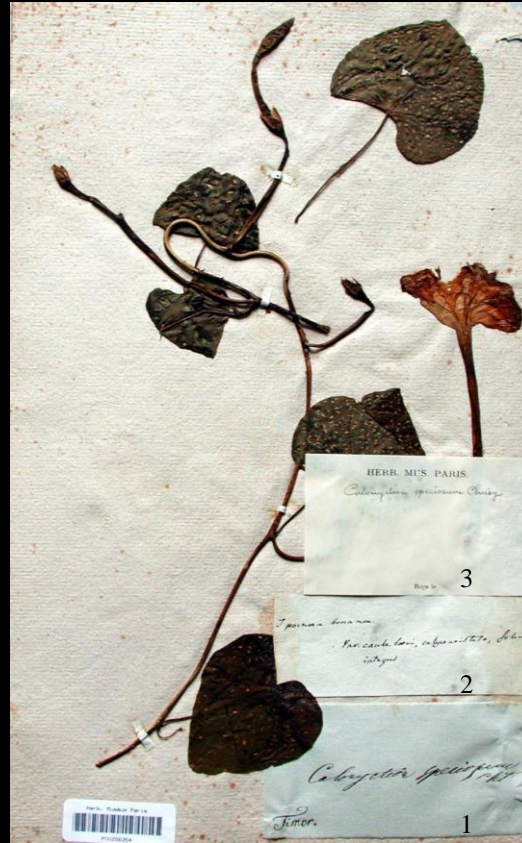
Angiospermae Dicotyledonae Asteridae III
 Convolvulaceae (Con 3-Con 5)



**Argyreia guichenotii*
 *Timor
 *Collected by Leschenault

Nota : Seed bag [label 4]

Barcode MNHN : P00256352



**Ipomoea bonanon*
 *Timor

Barcode MNHN : P00256354



**Ipomoea campanulata*
 *Timor

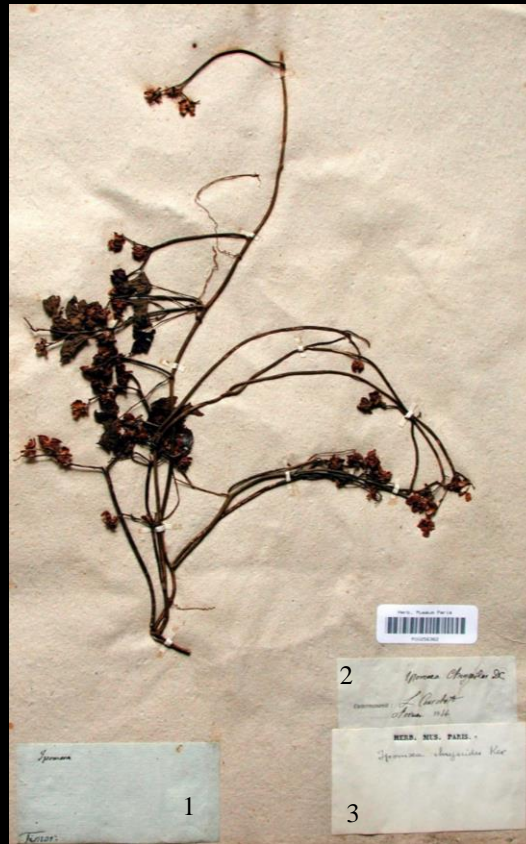
Barcode MNHN : P00256360

Angiospermae Dicotyledonae Asteridae III
Convolvulaceae (Con 6-Con 8)



**Ipomoea campanulata*
*Timor

Barcode MNHN : P00256359



**Ipomoea chryseides*
*Timor

Barcode MNHN : P00256362



**Ipomoea cymosa*
*Timor

Barcode MNHN : P00256363

Angiospermae Dicotyledonae Asteridae III
Convolvulaceae (Con 9-Con 11)



**Ipomoea filicaulis*
*Timor
*Collected by Riedlé

Barcode MNHN : P00256358



**Ipomoea filicaulis*
*Timor

Barcode MNHN : P00256355



**Ipomoea filicaulis*
*Timor
*Collected by Guichenot

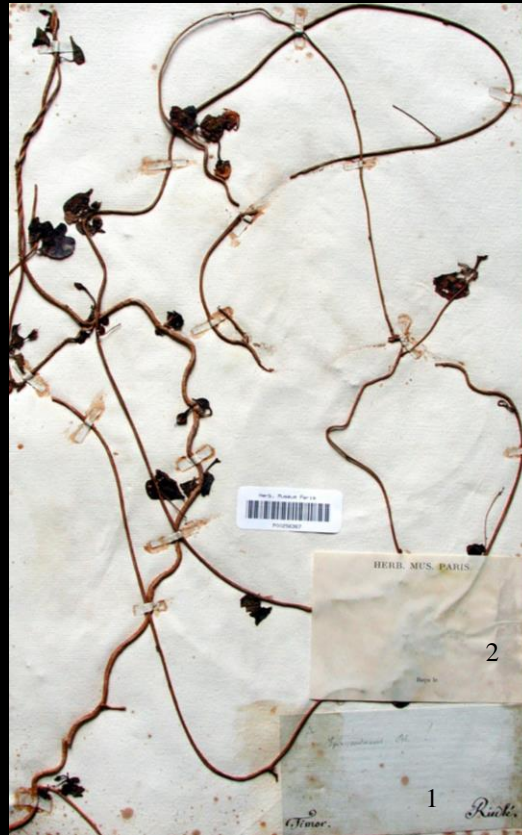
Barcode MNHN : P00256357

Angiospermae Dicotyledonae Asteridae III
Convolvulaceae (Con 12-Con 14)



**Ipomoea filicaulis*
*Timor
*Collected by Guichenot

Barcode MNHN : P00256356



**Ipomoea insularis*
*Timor
*Collected by Riedlé

Barcode MNHN : P00256367



**Ipomoea insularis*
*Timor

Barcode MNHN : P00256368

Angiospermae Dicotyledonae Asteridae III
 Convolvulaceae (Con 15-Con 17)



**Ipomoea obscura*
 *Timor

Nota : Seed bag [label 3]

Barcode MNHN : P00256366



**Ipomoea obscura*
 *Timor
 *Collected by Guichenot

Barcode MNHN : P00256364



**Ipomoea obscura*
 *Timor
 *Collected by Riedlé

Barcode MNHN : P00256365

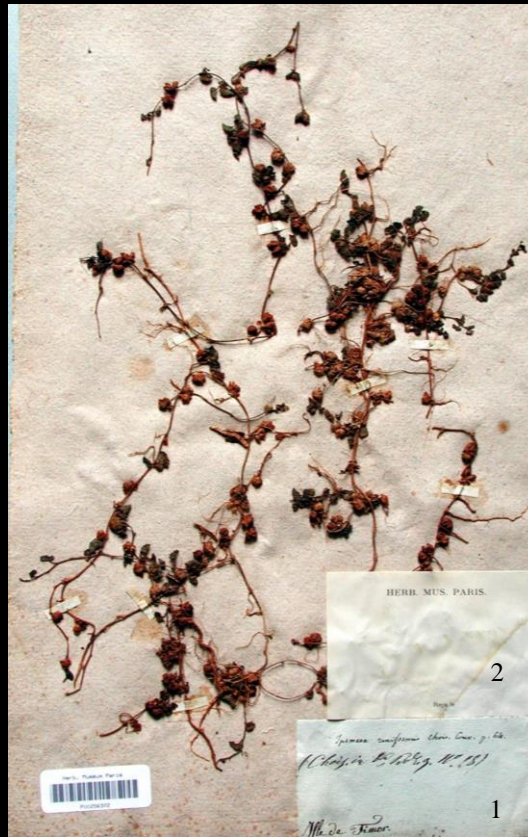
Angiospermae Dicotyledonae Asteridae III
Convolvulaceae (Con 18-Con 20)



**Ipomoea purpurea*
*Timor

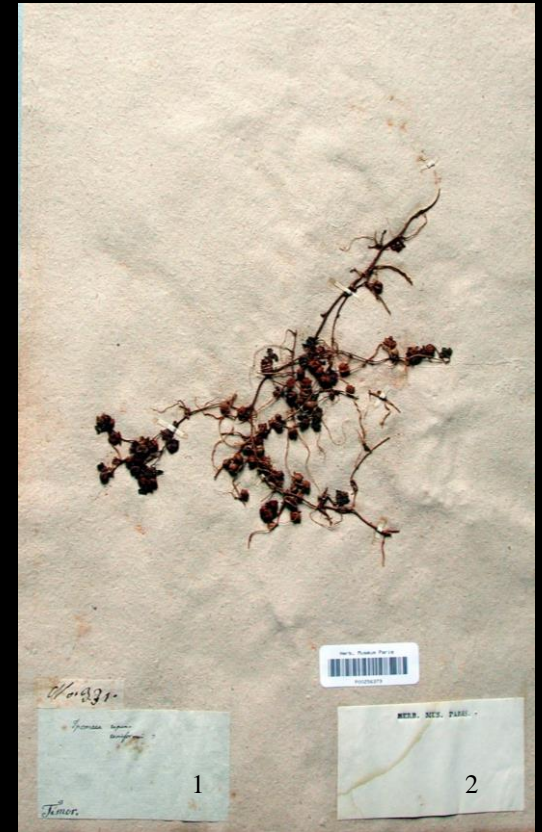
Nota : Revised by Derooin, 1995
[label 3]

Barcode MNHN : P00256371



**Ipomoea reniformis*
*Timor

Barcode MNHN : P00256372



**Ipomoea reniformis*
*Timor

Nota : In Leschenault's hand
« N°331 » [label 2]

Barcode MNHN : P00256373

Angiospermae Dicotyledonae Asteridae III
Convolvulaceae (Con 21-Con 23)



**Ipomoea sepiaria*
*Timor
*Collected by Guichenot

Nota : Revised by Courchet, 1914
[label 2]

Barcode MNHN : P00256374



**Ipomoea turpethum*
*Timor
*Collected by Riedlé

Barcode MNHN : P00256375



**Merremia vitifolia*
*Timor

Nota : Revised by Courchet, 1914, as
Ipomoea [label 4]

Barcode MNHN : P00256378

Angiospermae Dicotyledonae Asteridae III
 Convolvulaceae (Con 24-Con 26)



**Merremia vitifolia*
 *Timor
 *Collected by Guichenot

Nota : Seed bag [label 3]

Barcode MNHN : P00256379



**Merremia vitifolia*
 *Timor
 *Collected by Riedlé

Nota : (1) Revised by Van
 Ooststroom, 1939 [label 3] ; (2)
 Seed bag [label 4]

Barcode MNHN : P00256376

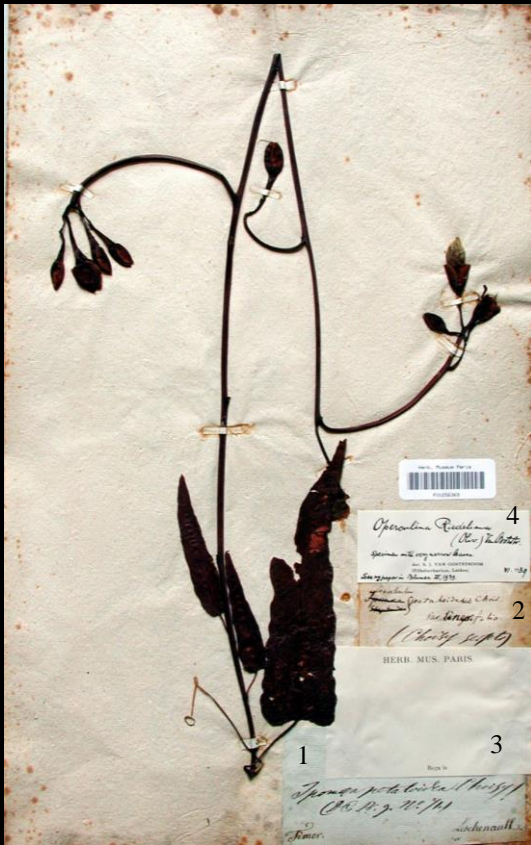


**Merremia vitifolia*
 *Timor
 *Collected by Guichenot

Nota : Seed bag [label 3]

Barcode MNHN : P00256377

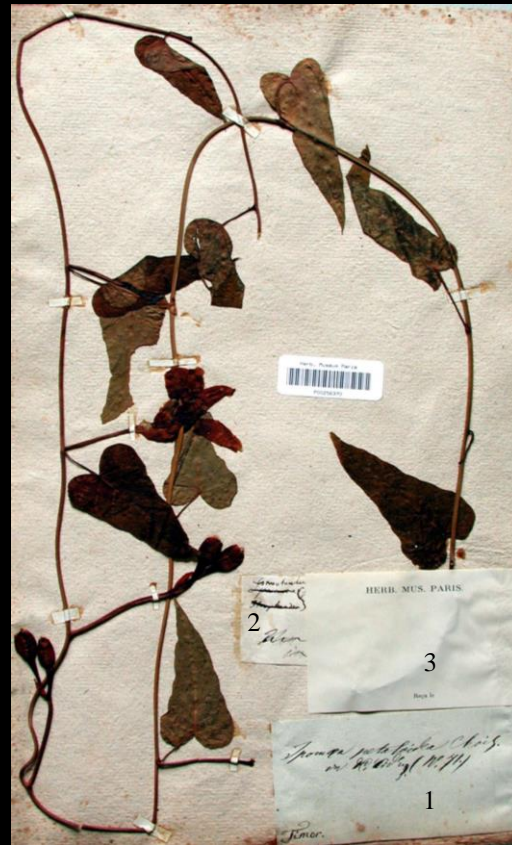
Angiospermae Dicotyledonae Asteridae III
 Convolvulaceae (Con 27-Con 28)



**Operculina riedeliana*
 *Timor
 *Collected by Leschenault

Nota : Revised by Van Ooststrom, 1939
 [label 4]

Barcode MNHN : P00256369



**Operculina riedeliana*
 *Timor

Barcode MNHN : P00256370

Cuscutaceae (Cus 1)



TYPE
 **Cuscuta timorensis*
 *Timor
 *Collected by Leschenault

Nota : (1) Revised by Belic, 1987
 [label 3] ; (2) Seed bag [label 4]

Barcode MNHN : P00256174

Angiospermae Dicotyledonae Asteridae III
Ehretiaceae (Ehr 1-Ehr 3)



**Cordia subcordata*
*Timor
*Collected by Guichenot

Barcode MNHN : P00256191



**Cordia subcordata*
*Timor
*Collected by Guichenot

Nota : Seed bag [label 2]

Barcode MNHN : P00256192



**Cordia subcordata*
*Timor

Barcode MNHN : P00256193

Angiospermae Dicotyledonae Asteridae III
Ehretiaceae (Ehr 4-Ehr 6)



**Cordia subpubescens*
*Timor
*Collected by Guichenot

Barcode MNHN : P00256194



**Cordia subpubescens*
*Timor
*Collected by Guichenot

Barcode MNHN : P00256195



**Cordia subpubescens*
*Timor
*Collected by Guichenot

Barcode MNHN : P00256196

Angiospermae Dicotyledonae Asteridae III
Ehretiaceae (Ehr 7-Ehr 9)



**Cordia trichostemon*
*Timor
*Collected by Guichenot

Barcode MNHN : P00256197



**Cordia trichostemon*
*Timor
*Collected by Guichenot

Barcode MNHN : P00256198



**Cordia trichostemon*
*Timor
*Collected by Guichenot

Barcode MNHN : P00256199

Angiospermae Dicotyledonae Asteridae III
Ehretiaceae (Ehr 10-Ehr 12)



**Ehretia aspera*
*Timor

Barcode MNHN : P00256186



**Ehretia laurifolia*
*Timor

Nota : Seed bag [label 3]

Barcode MNHN : P00256187



**Ehretia laurifolia*
*Timor

Nota : Seed bag [label 3]

Barcode MNHN : P00256188

Angiospermae Dicotyledonae Asteridae III
 Ehretiaceae (Ehr 13-Ehr 14)



- **Ehretia laurifolia*
- *Timor
- *Collected by Riedlé

Nota : (1) In Leschenault's hand
 « N°240 » [label 2] ; (2) Seed bag
 [label 4]

Barcode MNHN : P00256189



- **Ehretia timorensis*
- *Timor

Nota : In Guichenot's hand, see
 opposite [label 2]

Barcode MNHN : P00256190

Ehretia timorensis

Guichenot's text

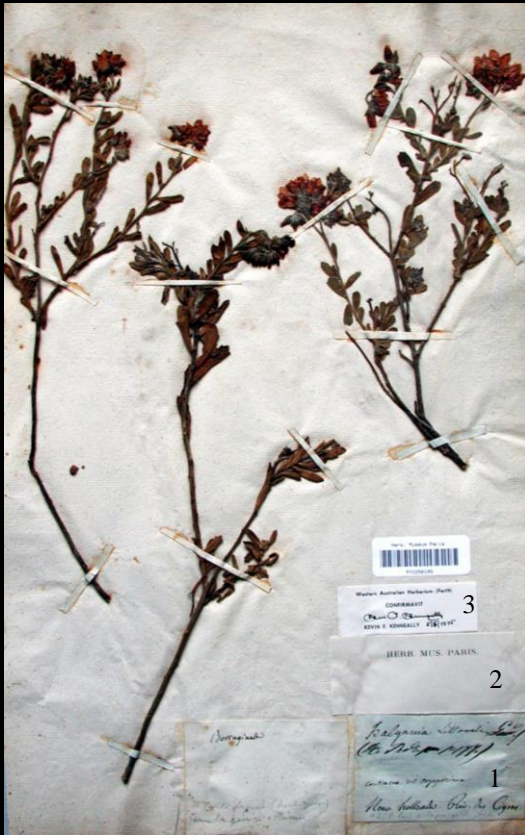
Original. nundarbriseau qui croit bord
 de riviere hoteur de 12 a 15 pied calice
 a 3 divisions corol a 6 divisions 6
 etamines stil sur monté dun stigmat
 Culie aux mois d'aous

Français. Un arbrisseau qui croît au
 bord des rivières. Hauteur de 12 à 15
 pieds. Calice à 3 divisions, 6 étamines,
 pistil surmonté d'un stigmate. Cueillie
 au mois d'aôut.

English. A shrub that grows along
 rivers. Height from 12 to 15 feet.
 Calyx divided into 3 divisions, 6
 stamens, pistil surmonted by a stigma.
 Collected in the month of August.

Angiospermae Dicotyledonae Asteridae III

Ehretiaceae (Ehr 15)



**Halgania littoralis*

*Swan River

Nota : Revised by Kennedy, 1975
[label 3]

Barcode MNHN : P00256185

Gentianaceae (Gen 1)



**Erythraea australis*

*Port Jackson

Barcode MNHN : P00256204

Goodeniaceae (Goo 1)



**Goodenia ovata*

*Port Jackson

Barcode MNHN : P00270110

Angiospermae Dicotyledonae Asteridae III
 Goodeniaceae (Goo 2-Goo 4)



**Goodenia bellidifolia*
 *Port Jackson

Barcode MNHN : P00270111



**Lechenaultia linarioides*
 *Shark Bay

Nota : (1) In Leschenault's hand
 « gaudinia gibbosa ; baie des Chiens
 marins ; N°3 » [label 1] : (2)
 Revised by Carolin, 1973 [label 3]

Barcode MNHN : P00270114



**Lechenaultia expansa*
 *King George Sound

Barcode MNHN : P00270113

Angiospermae Dicotyledonae Asteridae III
Goodeniaceae (Goo 5-Goo 6)



**Lechenaultia expansa*
*King George Sound

Nota : Writing Guichenot, see
opposite [label 2]

Barcode MNHN : P00270112

Lechenaultia expansa

Guichenot's text

Original. plante cée leuuant de 7 et 8
pousses de taiere à flaur blanche
cette plante croit sur le sabre aux
avre de la raine charlaute
rée couttée aux paurre du roi gaurge

Français. Plante s'élevant de 7 à 8
pouces de terre, à fleurs blanches.
Cette plante croît sur le sable au
havre de la Reine Charlotte.
Récoltée au port du Roi Georges.

English. Plant reaching 7 to 8 inches
in height, with white flowers. This
plant grows on sand in Queen
Charlotte Harbour.
Collected in King George Sound.



**Lechenaultia tubiflora*
*King George Sound

Barcode MNHN : P00270115

Angiospermae Dicotyledonae Asteridae III
 Goodeniaceae (Goo 7-Goo 9)



**Leschenaultia tubiflora*
 *West coast

Barcode MNHN : P00270116



**Leschenaultia tubiflora*
 *King George Sound

Barcode MNHN : P00270117



*Unidentified *Vellia*
 *Port Jackson

Nota : In Leschenault's hand
 « Vellia (Smith) ; port Jackson,
 N°7 » [label 1]

Barcode MNHN : P00270118