



13-17-501
Version: 26
May 9, 2018

**VARIABLE SPEED,
TWO-STAGE
STATIONARY BASE-MOUNTED
COMPRESSOR**

AirSmart™ Controller

MODELS

VST110A-VST150A-VST180A

110-150-180 kW

60 HZ

PARTS LIST

**MAINTAIN COMPRESSOR RELIABILITY AND PERFORMANCE WITH
GENUINE GARDNER DENVER® COMPRESSOR PARTS AND SUPPORT SERVICES**

Gardner Denver® Compressor genuine parts, manufactured to design tolerances, are developed for optimum dependability – specifically for Gardner Denver compressor systems. Design and material innovations are the result of years of experience with hundreds of different compressor applications. Reliability in materials and quality assurance is incorporated in our genuine replacement parts.

Your authorized Gardner Denver Compressor distributor offers all the backup you'll need. An AirSmart network of authorized distributors provides the finest product support in the air compressor industry.

Your authorized distributor can support your Gardner Denver air compressor with these services:

1. Trained parts specialists to assist you in selecting the correct replacement parts.
2. Factory warranted new and remanufactured rotary screw airends. Most popular model remanufactured airends are maintained in stock at the factory, for purchase on an exchange basis with liberal core credit available for the replacement unit.
3. A full line of factory tested AEON™ compressor lubricants specifically formulated for use in Gardner Denver compressors.
4. Repair and maintenance kits designed with the necessary parts to simplify servicing your compressor.

Authorized distributor service technicians are factory trained and skilled in compressor maintenance and repair. They are ready to respond and assist you by providing fast, expert maintenance and repair services.

To Contact Gardner Denver or locate your local distributor:

visit: www.gardnerdenver.com/industrials

or

call: (800)682-9868

INSTRUCTIONS FOR ORDERING REPAIR PARTS

When ordering parts, specify Compressor MODEL, Method of Cooling, POWER and SERIAL NUMBER (see nameplate on unit). The Airend Serial Number is also stamped on top of the discharge bearing carrier castings.

All orders for Parts should be placed with the nearest authorized distributor.

Where NOT specified, quantity of parts required per compressor or unit is one (1); where more than one is required per unit, quantity is indicated in parenthesis. SPECIFY EXACTLY THE NUMBER OF PARTS REQUIRED.

DO NOT ORDER BY SETS OR GROUPS.

To determine the Right-Hand and Left-Hand side of a compressor, stand at the motor end and look toward the compressor. Right-Hand and Left- Hand are indicated in parenthesis following the part name, i.e. (RH) and (LH), when appropriate.

TOTAL PRODUCT SUPPORT – GARDNER DENVER’S CONTINUING COMMITMENT TO YOUR AIR COMPRESSOR PERFORMANCE

Commitment to total product support continues long after the purchase of your quality Gardner Denver rotary screw compressor.

Gardner Denver original parts incorporate years of experience and improvements in design, materials and quality assurance. Maintaining your compressor investment with Gardner Denver parts will insure protection for the air compressor unit and long, dependable service life.

Your authorized Gardner Denver compressor distributor maintains a complete stock of all common maintenance parts, factory approved AEON lubricants, and Gardner Denver factory warranted exchange airends. In addition, authorized distributor technicians are factory trained, and can provide complete diagnostic, compressor maintenance and repair services.

This manual is designed to assist you in maintaining high performance and receiving many years of dependable service you expect from your Gardner Denver compressor.

REMANUFACTURED AIRENDS

Whenever an airend requires replacement or repair, Gardner Denver offers an industry unique, factory remanufactured airend exchange program. From its modern factory, Gardner Denver is committed to supplying you with the highest quality, factory remanufactured airends that are guaranteed to save you time and money.

Immediately Available

Repair downtime costs you money, which is why the most popular models are in inventory at all times.

Skilled Craftsmen

Our Remanufacturing assembly technicians average over 20 years experience with air compression products.

Precision Remanufacturing

All potentially usable parts are thoroughly cleaned, inspected and analyzed. Only those parts that can be brought back to original factory specifications are remanufactured. Every remanufactured airend receives a new overhaul kit: bearings, gears, seals, sleeves and gaskets.

Extensive Testing

Gardner Denver performs testing that repair houses just don't do. Magnaflux and ultrasonic inspection spot cracked or stressed castings, monochromatic light analysis exposes oil leaks, and coordinate measurement machine inspects to +/- .0001", insuring that all remanufactured airends meet factory performance specifications.

Warranty

Gardner Denver backs up every remanufactured airend with a warranty...27 months from purchase.

Gardner Denver remanufactured airends deliver *quality without question...year in and year out.*

Call Gardner Denver for information on the airend exchange program and the name of your authorized distributor.

Phone Number: (800) 682-9868 or
Fax: (217) 224-7814

TABLE OF CONTENTS

Maintain Compressor Reliability And Performance With GenuineGardner Denver Compressor	
Parts And Support Services	1
Instructions For Ordering Repair Parts	1
Total Product Support – Gardner Denver’s Continuing Commitment To Your Air Compressor Performance	2
Remanufactured Airends	2
Airend Selection And Repair Kits	4
Seal And Wear Sleeve Sealant Application.....	5
Airend – SBV 1st Stage (Plugs)	6
Airend – SBV 1st Stage (Main Assembly)	7, 8
Airend – SBJ 2nd Stage (Main Assembly)	9, 10
Airend – SBJ 2nd Stage (Plugs).....	11
InterStage Manifold Assembly	12
Base, Airends And Motors	13, 14
Separator / Reservoir Assembly.....	15, 16
Fan Cooler Assembly (Air Cooled)	17, 18
Coolers & Oil Piping With Shut-Off Valve & Temperature Regulator (Water Cooled).....	19, 20
Coolers & Oil Piping With Shut-Off Valve & Temperature Regulator (Salt Water Cooled)	21, 22
Coolers & Oil Piping With Shut-Off Valve (Water Cooled).....	23, 24
Coolers & Oil Piping With Shut-Off Valve (Salt Water Cooled).....	25, 26
Oil Filter Element Assembly	27
Oil Filter Assembly	28
Minimum Pressure/Check Valve	29
Motor Air Ducts	30
Inlet Valve & Air Filter Parts	31, 32
Inlet Valve	33, 34
Oil Distribution	35, 36
Controls Lines – Temperature & Pressure	37, 38
Control Lines.....	39, 40
Enclosure	41, 42
Control Box (Air Cooled)	43, 44
Control Box (Water Cooled).....	45, 46
Control Box Layout	47, 48
Main Motor Wiring.....	49, 50
Cooler Fan Motor (Air Cooled Only).....	51
Vent Fans	52
Electrical Grounding Kit.....	53, 54
Decal Layout	55 - 58
Outline 1st Stage	59, 60
Outline 2nd Stage	61, 62
Moisture Separator With Trap (VP1021707)	63
Repair Kits	64 - 67

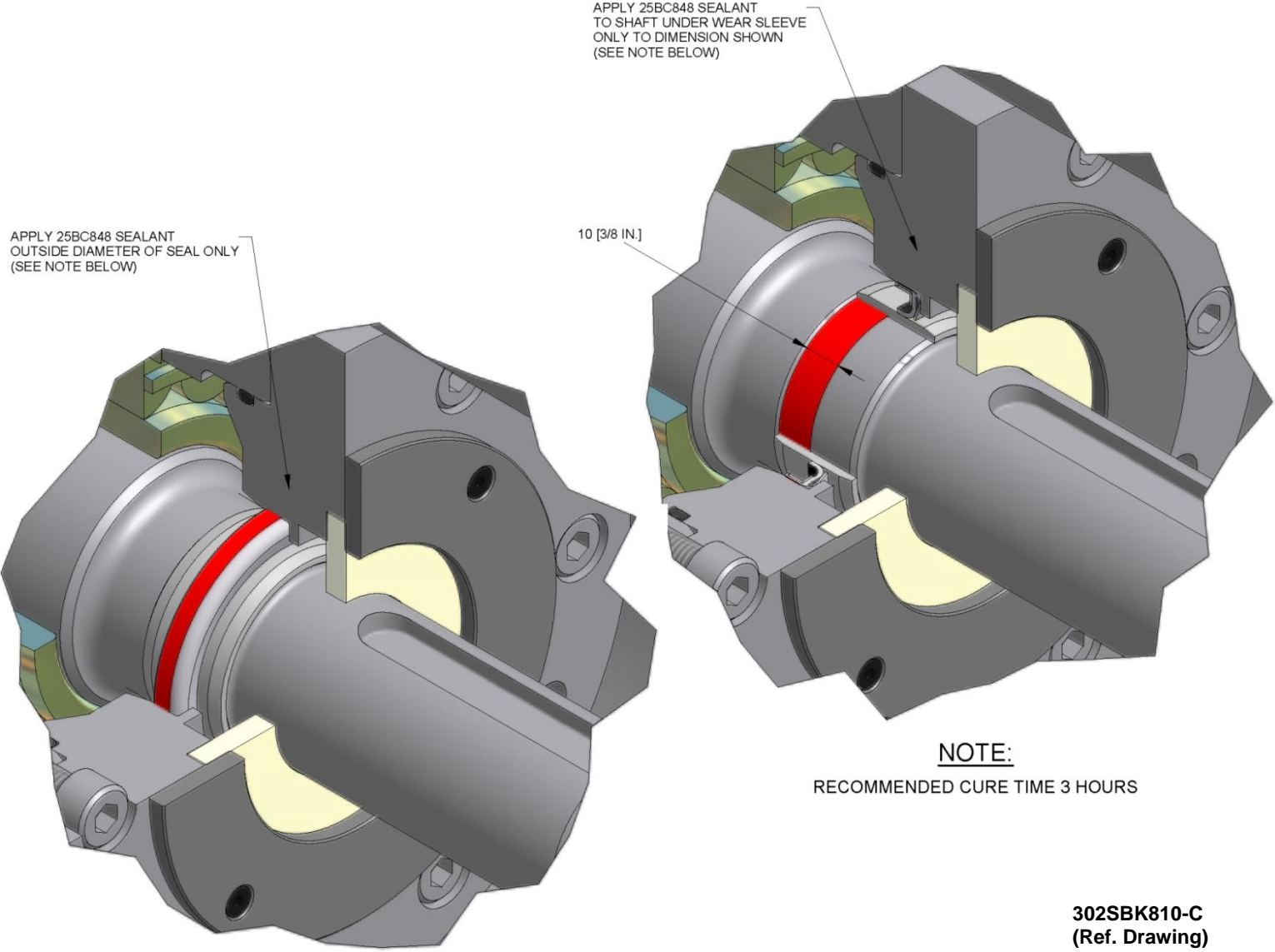
For Operating and Service Instructions, see:	
SERVICE MANUAL	13-17-605
CONTROLLER MANUAL	13-17-600
COMMUNICATIONS MODULE	13-17-604

AIREND SELECTION AND REPAIR KITS

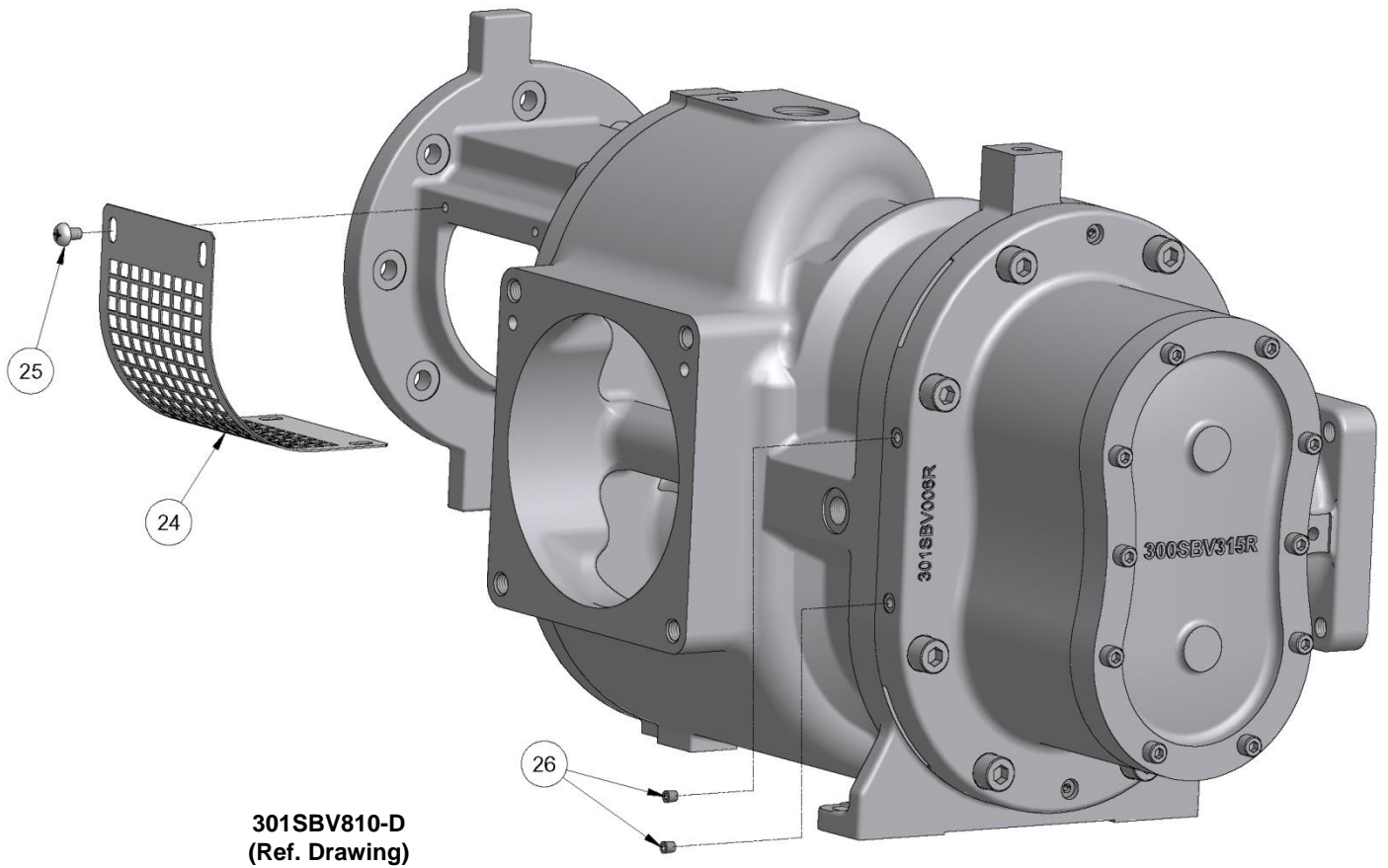
Model	KW	PSI	Airend 1st Stage	Reman Airend 1st Stage	Airend 2nd Stage	Reman Airend 2nd Stage	Drive Shaft Seal Kit
VST110-180	110, 150, 180	100-175	SBVFNAAE00S	SBVFNAAE00X	SBJSNABE00S	SBJSNABE00X	300SBV6029 300SBJ6029

For listing of Repair Parts included in Kit numbers above, see Repair Kit Section, pages 62-64.

SEAL AND WEAR SLEEVE SEALANT APPLICATION



Order by Part Number and Description. Reference Numbers are for your convenience only.

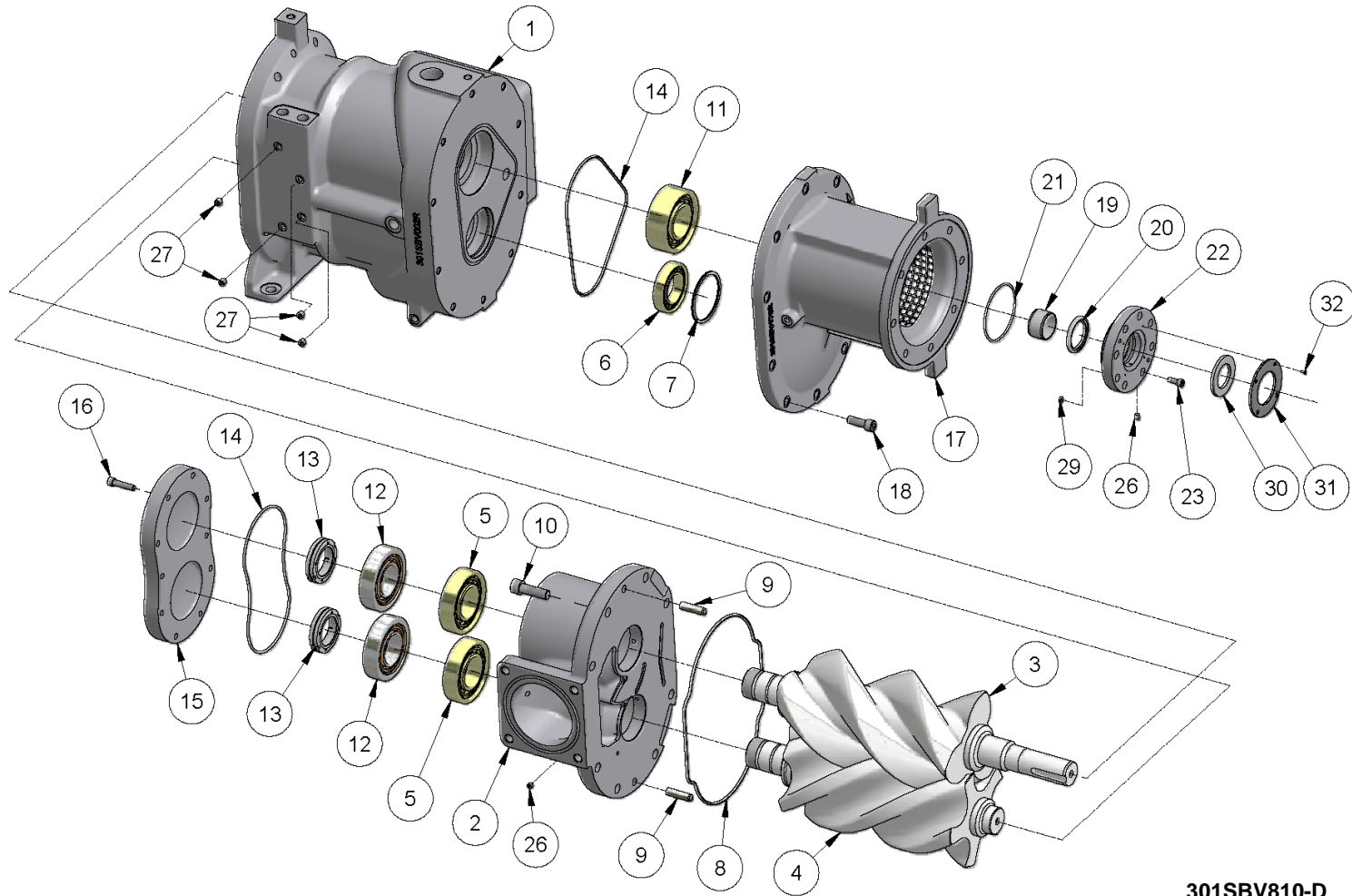


**AIREND – SBV 1st STAGE
(PLUGS)**

B/M: SBJSNABE00S

Ref. No.	Name of Part	Qty.	Part No.
24	COUPLING GUARD	1	300SBK339
25	SCREW	4	75G67
26	PLUG	2	64AA55

**AIREND – SBV
(MAIN ASSEMBLY)
1st STAGE**



**301SBV810-D
(Ref. Drawing)**

Order by Part Number and Description. Reference Numbers are for your convenience only.

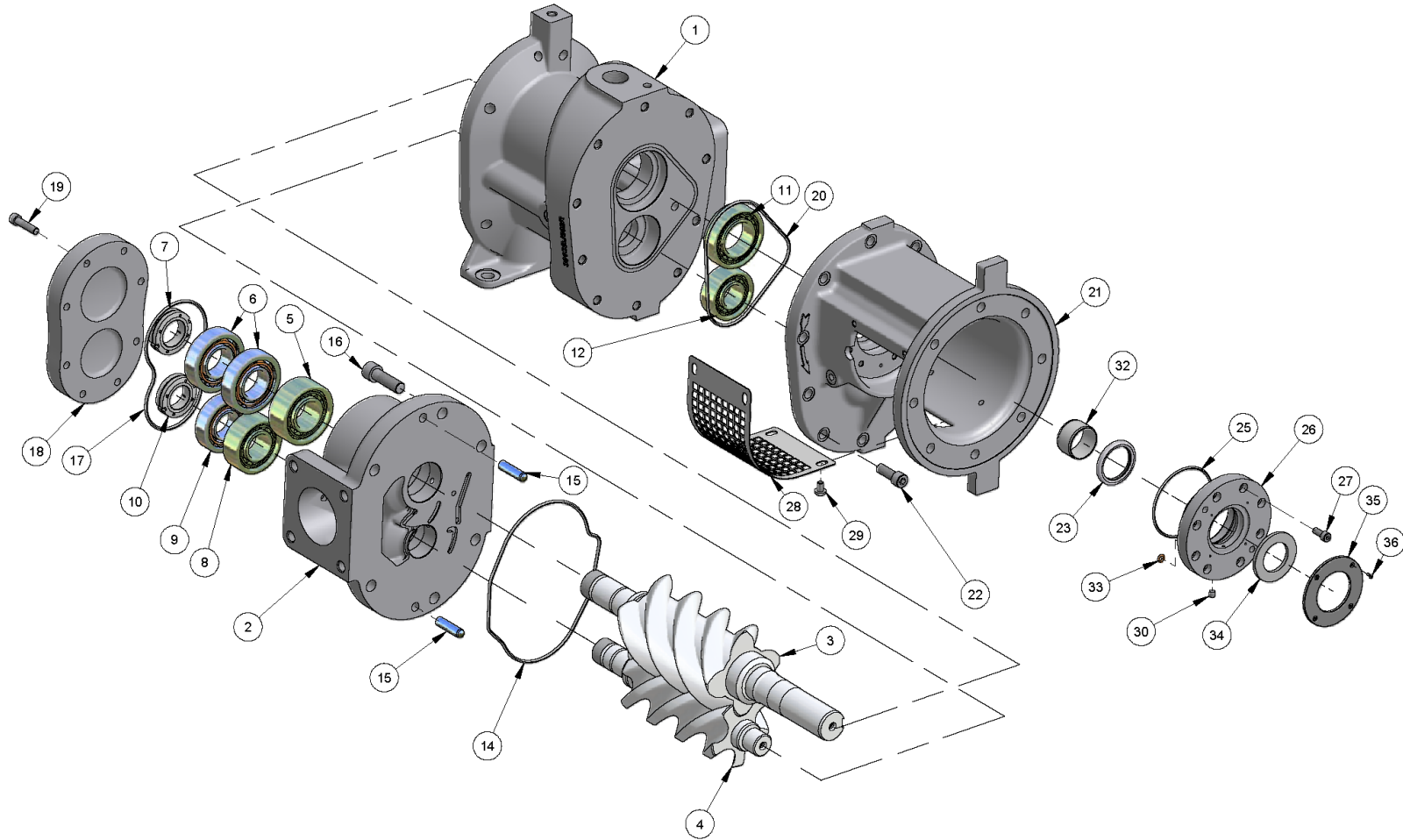
**AIREND – SBV
(MAIN ASSEMBLY)
1st STAGE**

B/M: SBVFNAAE00S

Ref. No.	Name of Part	Qty.	Part No.	Ref. No.	Name of Part	Qty.	Part No.
1	CYLINDER	1		17	ADAPTOR	1	
2	BEARING HOUSING	1		18	SCREW	10	
3	ROTOR	1		* 19	BUSHING	1	89850729
4	ROTOR	1		* 20	SEAL	1	89850609
5	ROLLER BEARING.....	2		* 21	O-RING	1	25BC800
6	ROLLER BEARING.....	1		22	SEAL HOUSING	1	301SBV362
7	RETAINING RING.....	1		23	SCREW	8	665SMCA100250
8	O-RING	1		26	PLUG.....	2	
9	PIN	2		27	PLUG.....	4	
10	SCREW	8		* 28	O-RING	1	25BC844
11	ROLLER BEARING.....	1		* 29	SEAL	1	300SBJ316
12	BALL BEARING	2		31	RETAINER	1	300SBJ205
13	BEARING NUT.....	2		32	SCREW	4	
14	O-RING	2		* 33	SEALANT (not shown).....	1	25BC632
15	BEARING PLATE	1		34	SEALANT (not shown).....	1	25BC669
16	SCREW	10		35	PAINT-BLACK (not shown).....	.125	28H337

* Parts Included In Oil Seal Kit Part Number 300SBV6029. Refer to page 65.

**AIREND – SBJ
(MAIN ASSEMBLY)
2nd STAGE**



**302SBJ810-A
(Ref. Drawing)**

Order by Part Number and Description. Reference Numbers are for your convenience only.

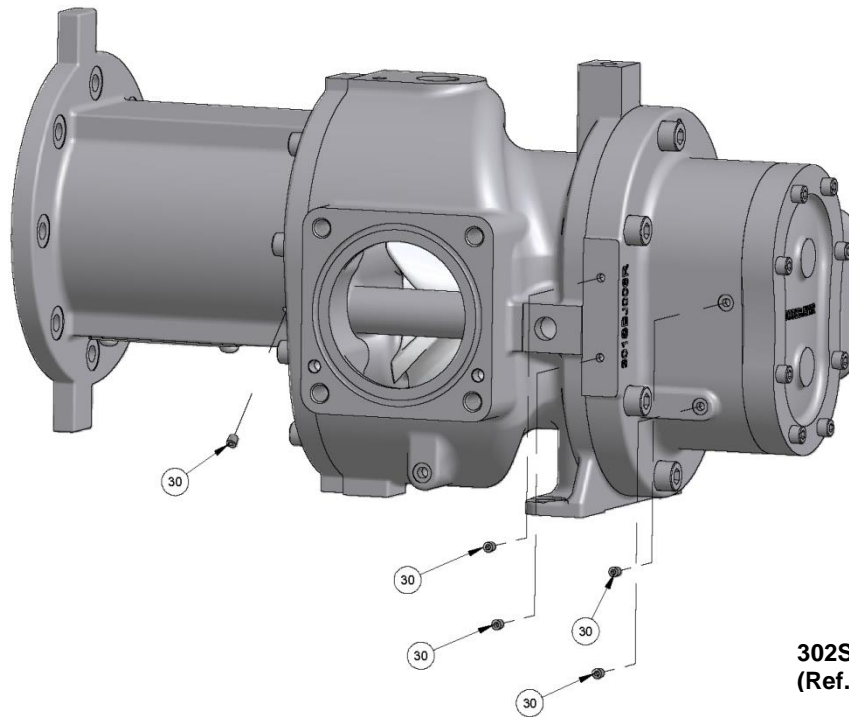
**AIREND – SBJ
(MAIN ASSEMBLY)
2nd STAGE**

B/M: SBJSNABE00S

Ref. No.	Name of Part	Qty.	Part No.	Ref. No.	Name of Part	Qty.	Part No.
1	CYLINDER.....	1		20	O-RING.....	1	
2	BEARING HOUSING	1		21	ADAPTOR	1	
3	ROTOR	1		22	SCREW	10	
4	ROTOR	1		* 23	SEAL	1	89850609
5	ROLLER BEARING	1		* 25	O-RING.....	1	25BC819
6	BALL BEARING	2		26	SEAL HOUSING.....	1	301SBJ362
7	NUT.....	1		27	SCREW	8	
8	ROLLER BEARING	1		28	COUPLING GUARD.....	1	300SBK339
9	BALL BEARING	1		29	SCREW	4	
10	NUT.....	1		30	PLUG	1	
11	ROLLER BEARING	1		* 32	BUSHING	1	89850729
12	ROLLER BEARING	1		* 33	O-RING.....	1	25BC844
14	O-RING	1		* 34	SEAL.....	1	300SBJ316
15	PIN	2		35	RETAINER.....	1	300SBJ205
16	SCREW.....	6		36	SCREW	4	
17	O-RING	1		* 37	SEALANT (not shown)	1	25BC848
18	BEARING PLATE	1		38	SEALANT (not shown)	1	25BC669
19	SCREW.....	8		39	PAINT BLACK (not shown) (PT)	1	28H432

* Parts Included In Oil Seal Kit Part Number 300SBJ6029. Refer to page 66.

Order by Part Number and Description. Reference Numbers are for your convenience only.

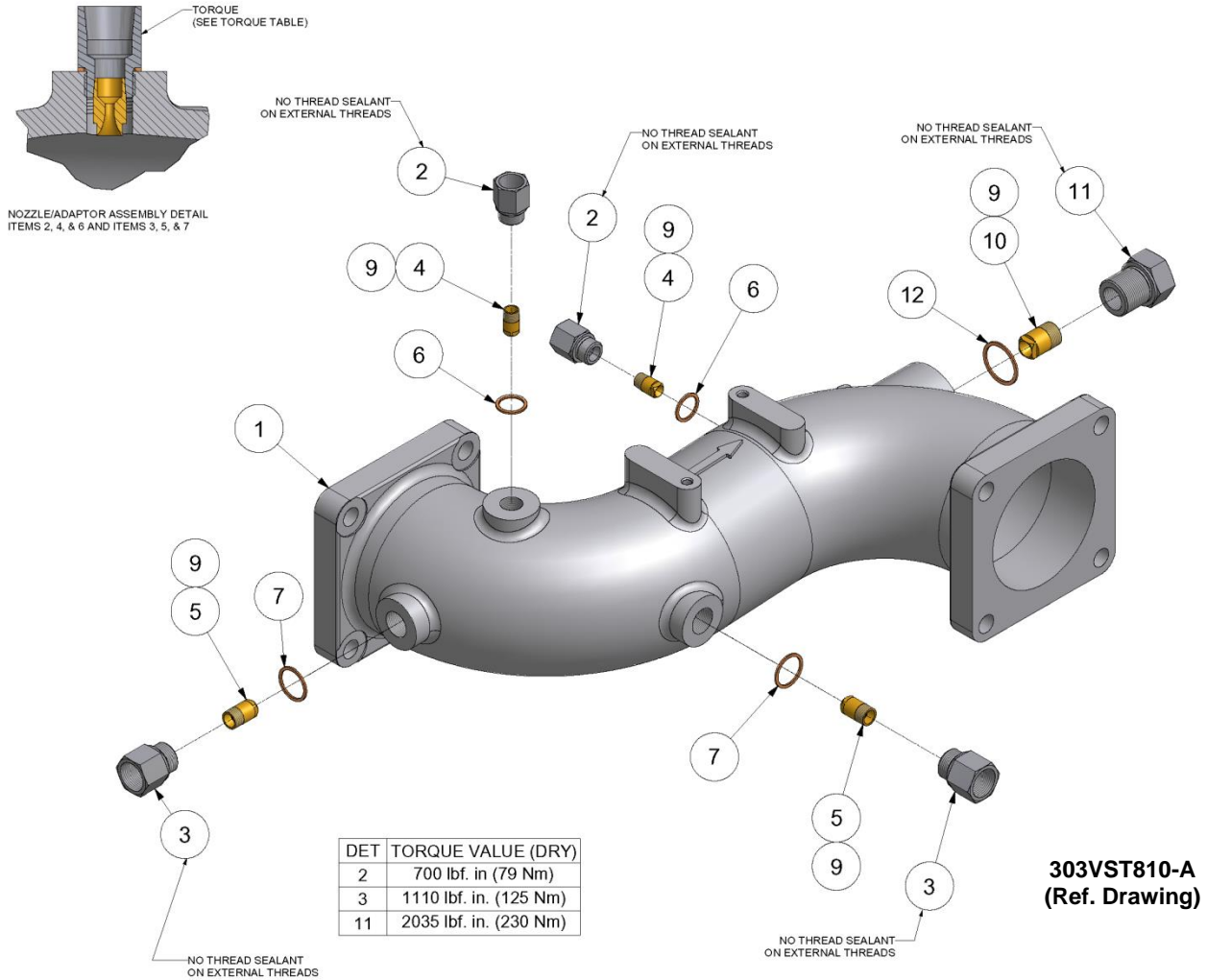


**AIREND – SBJ 2ND STAGE
(PLUGS)**

B/M: SBJSNABE00S

Ref. No.	Name of Part	Qty.	Part No.
30	PLUG	5	64AA55

Order by Part Number and Description. Reference Numbers are for your convenience only.

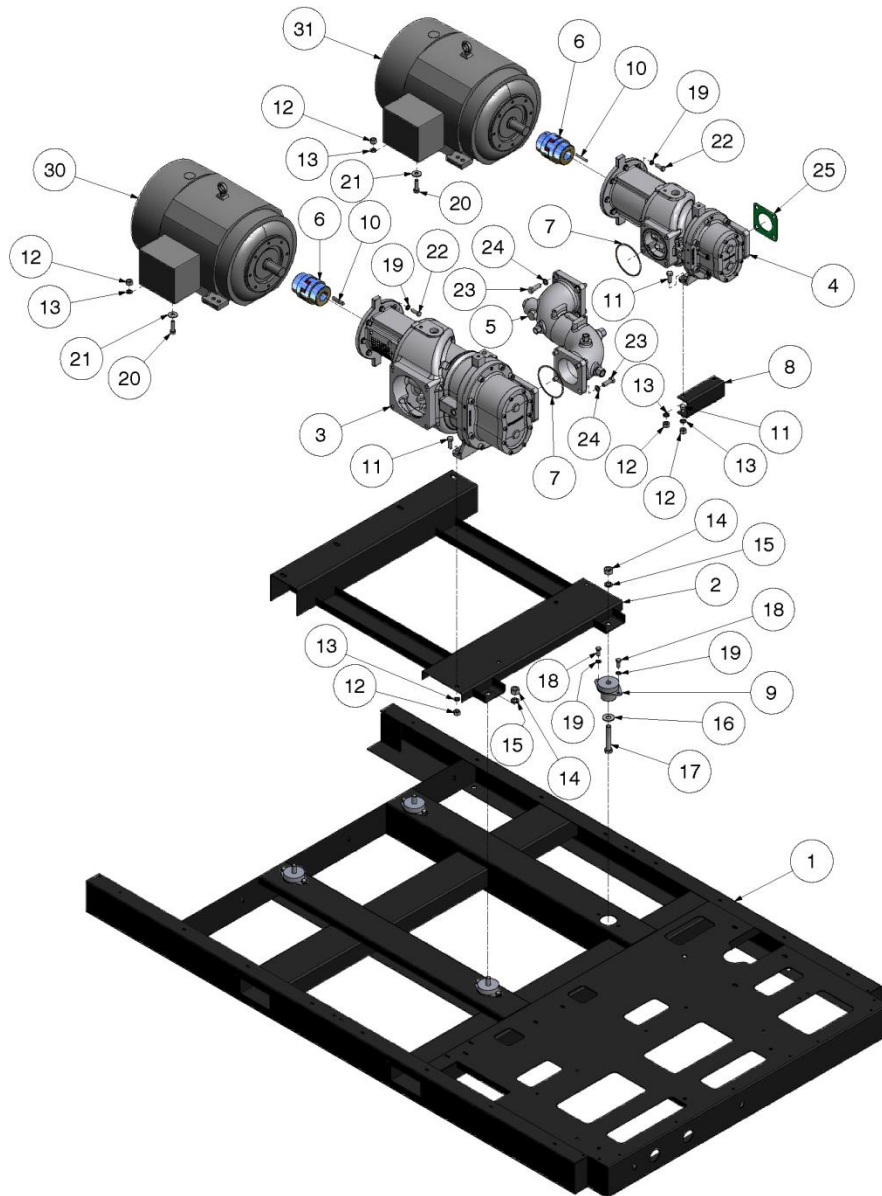


INTERSTAGE MANIFOLD ASSEMBLY

Ref. No.	Name Of Part	B/M 301VST4013 Qty.	Part No.
1	MANIFOLD	1	301ETV286
*2	ADAPTOR	2	301ETK170
*3	ADAPTOR	2	300ETV170
*4	NOZZLE	2	52C8
*5	NOZZLE	2	52C9
*6	GASKET	2	25BC861
*7	GASKET	2	25BC876
*8	PLUG.....	1	64A27G
*9	LOCTITE	1	25BC669
*10	NOZZLE	1	52C12
*11	ADAPTOR	1	301ETV170
*12	GASKET	1	25BC862

* Part Included In Nozzle Repair Kit Part Number 308VST6003. Refer to page 64.

BASE, AIRENDS AND MOTORS



302VST810-B
(Ref. Drawing)

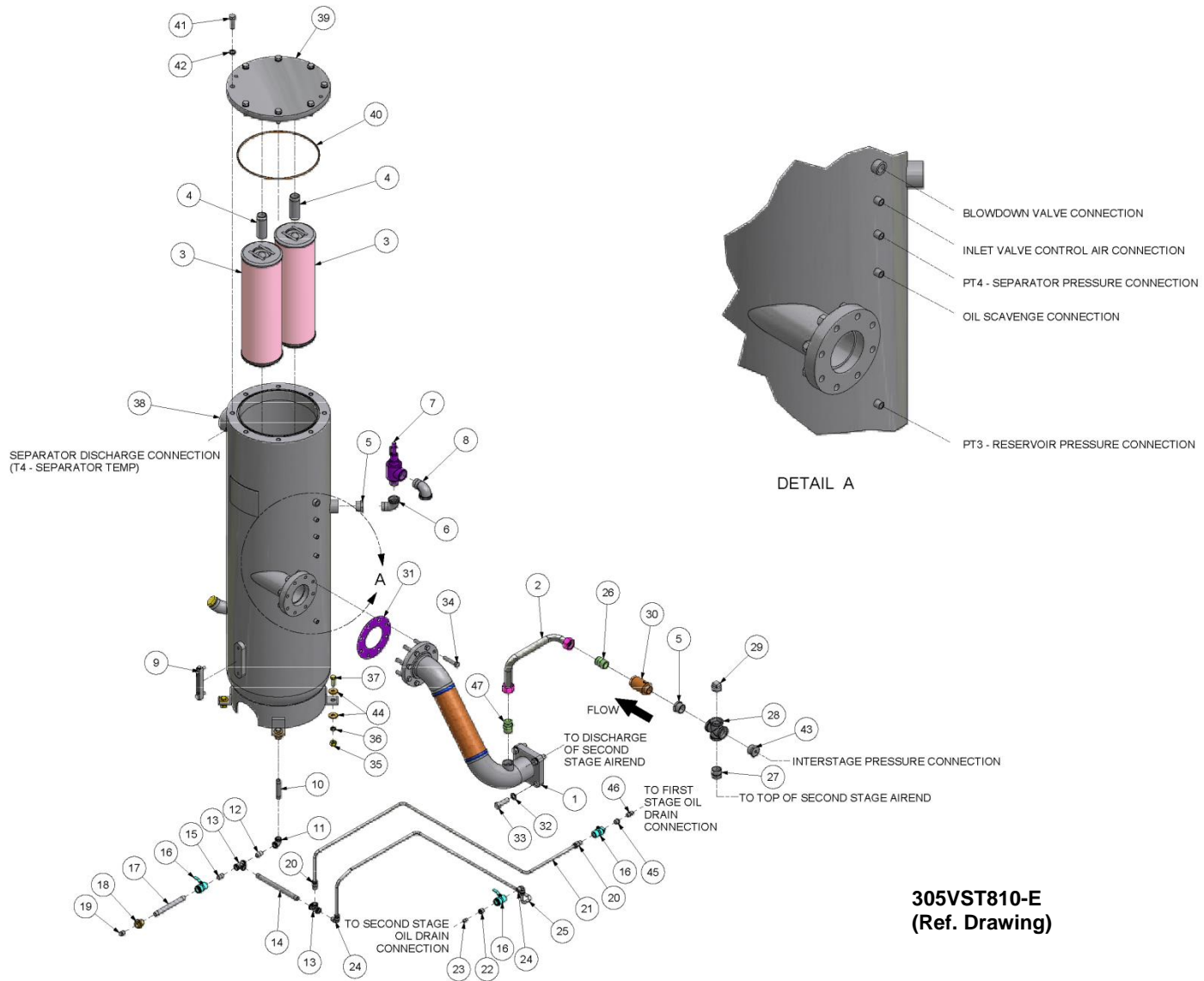
Order by Part Number and Description. Reference Numbers are for your convenience only.

BASE, AIRENDS AND MOTORS

Ref. No.	Name Of Part	B/M Qty.	300VST4001; 300, 301 & 302VST4015 Part No.
1	MAIN BASE	1	CC1009610
2	SUB BASE	1	CC1051938
3	BARE SCREW MODEL (See Pages 6-8)	1	SBVFNAAE00S
4	BARE SCREW MODEL (See Page 9-11)	1	SBJSNABE00S
5	INTERSTAGE MANIFOLD ASSEMBLY (See Page 12) ...	1	301VST4013
6	COUPLING	2	CC1009614
	COUPLING HUB, AIREND.....	1	VP1009615
	COUPLING HUB, MOTOR	1	VP1009616
	SPIDER.....	1	VP1009617
7	O-RING	2	25BC835
8	FOOT	1	CC1009613
9	VIBRATION ISOLATOR	4	49C56
10	KEY	2	35L95
11	SCREW	6	655EG08Z
12	NUT.....	10	50B8
13	LOCKWASHER	10	95B8
14	NUT.....	4	50B10
15	LOCKWASHER	4	95B10
16	WASHER	4	95A10
17	SCREW.....	4	655EH24Z
18	SCREW.....	8	655EF06Z
19	LOCKWASHER	24	95B7
20	SCREW.....	4	655EG10Z
21	WASHER	4	95A8
22	SCREW.....	16	655EF07Z
23	SCREW.....	8	665HMCA20060Z
24	SPRING	8	671HLHR20Z
25	GASKET	1	25BC867
* 30	MOTOR (1st STAGE)		
	110 kW, 460V.....	1	24CA7449
	150 kW, 460V.....	1	24CA7451
	180 kW, 460V.....	1	24CA7453
* 31	MOTOR (2nd STAGE)		
	110 kW, 460V.....	1	24CA7450
	150 kW, 460V.....	1	24CA7452
	180 kW, 460V.....	1	24CA7454

* See Page 65, for Motor Bearing Grease Part Numbers.

SEPARATOR / RESERVOIR ASSEMBLY



305VST810-E
(Ref. Drawing)

Order by Part Number and Description. Reference Numbers are for your convenience only.

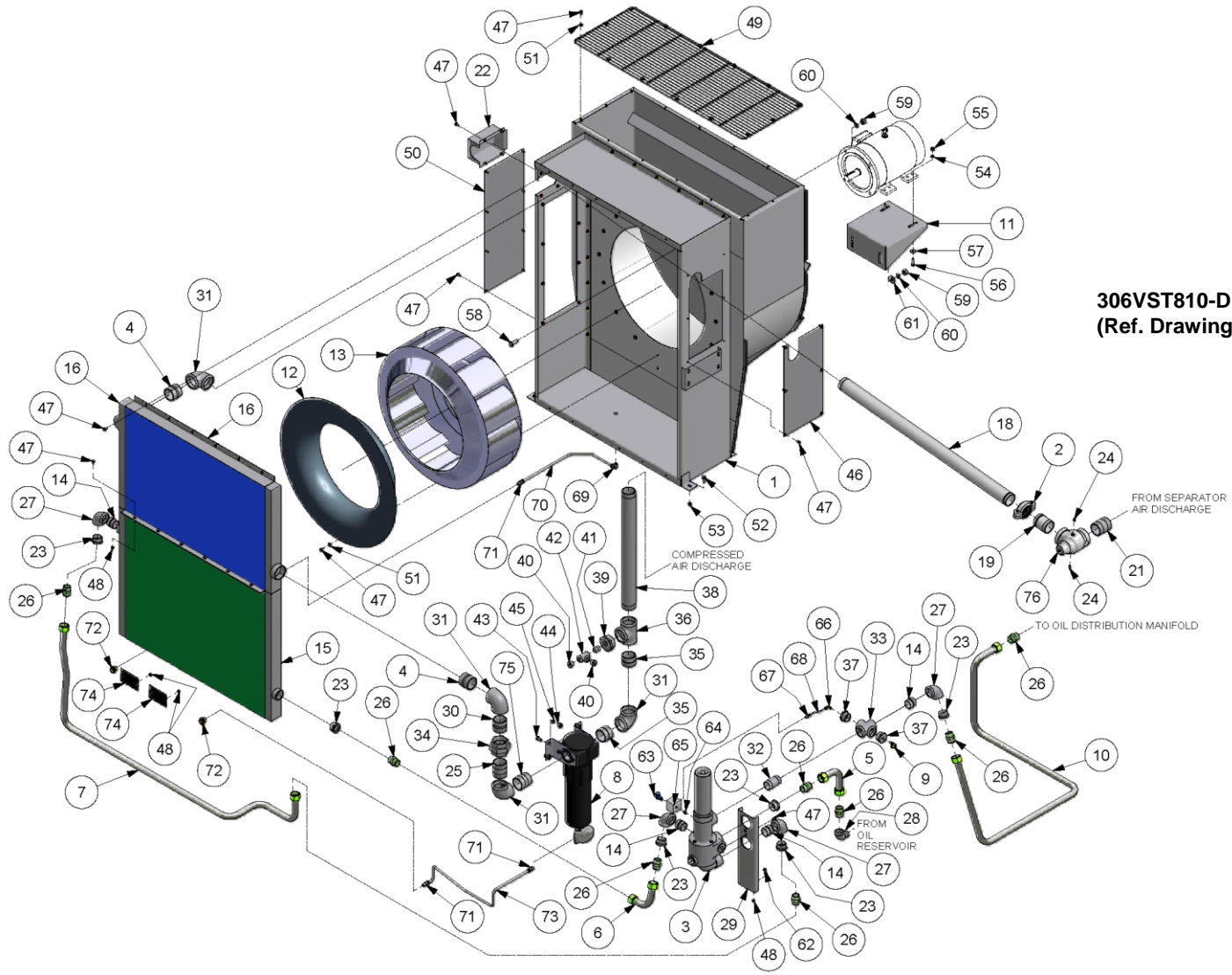
SEPARATOR / RESERVOIR ASSEMBLY

B/M: 302 & 303VST4013

Ref. No.	Name of Part	Qty.	Part No.	Ref. No.	Name of Part	Qty.	Part No.
1	DISCHARGE MANIFOLD (2nd STAGE)	1	CC1009822	24	TUBE FITTING.....	2	86E227
2	HOSE	1	308EFD127	25	TUBE (IN FEET).....	8	85K6
*3	OIL SEPARATOR.....	2	300EBQ035	26	CONNECTOR	1	86H140
4	NIPPLE.....	2	63AJ24X54G	27	NIPPLE.....	1	63K20G
5	BUSHING.....	2	64E22G	28	CROSS.....	1	64K20G
6	ELBOW	1	64D7G	29	PLUG.....	1	64AA2G
7	PRESSURE RELIEF VALVE.....	1	90AR1167	30	CHECK VALVE	1	90AR1146
8	ELBOW	1	64D8G	31	GASKET	1	25BC325
9	OIL LEVEL GAUGE.....	1	40P77	32	SPRING.....	4	671HLHR20Z
10	NIPPLE.....	1	63F38G	33	SCREW	4	665HMCA20065Z
11	ELBOW	1	64C4G	34	SCREW	8	655EF13Z
12	NIPPLE.....	1	63F33G	35	NUT	12	50B7Z
13	TEE	2	64G6G	36	LOCKWASHER.....	12	95B7Z
14	NIPPLE.....	1	63F17G	37	SCREW	4	655EF07Z
15	NIPPLE.....	1	63F21G	**+38	RESERVOIR TANK / SEPARATOR.....	1	CC1009821
16	BALL VALVE	3	90AR241	+39	SEPARATOR COVER.....	1	CC1009824
17	NIPPLE.....	1	63F25G	*+40	O-RING	1	25BC694
18	COUPLING.....	1	64EB613	+41	SCREW	8	655EG10Z
19	PLUG.....	1	64AA7G	+42	LOCKWASHER	8	95B8
20	FITTING	2	86E215	43	BUSHING	1	64E39G
21	TUBE (IN FEET).....	8	85K6	44	WASHER.....	8	95A7Z
22	PIPE BUSHING	1	64E2G	45	PIPE BUSHING.....	1	64E4G
23	NIPPLE.....	1	86N384	46	NIPPLE.....	1	86N402
				47	CONNECTOR	1	86H208

* Part Included In Separator Repair Kit Part Number 300ETV6013. Refer to page 64.
 ** For Repair of Oil-Fill Plug, Order Part Number 2118518 (O-Ring Part Number 2118519 Included).
 + Cover & Hardware Included with Replacement Reservoir Part Number 302VST4013.

FAN COOLER ASSEMBLY (AIR COOLED)



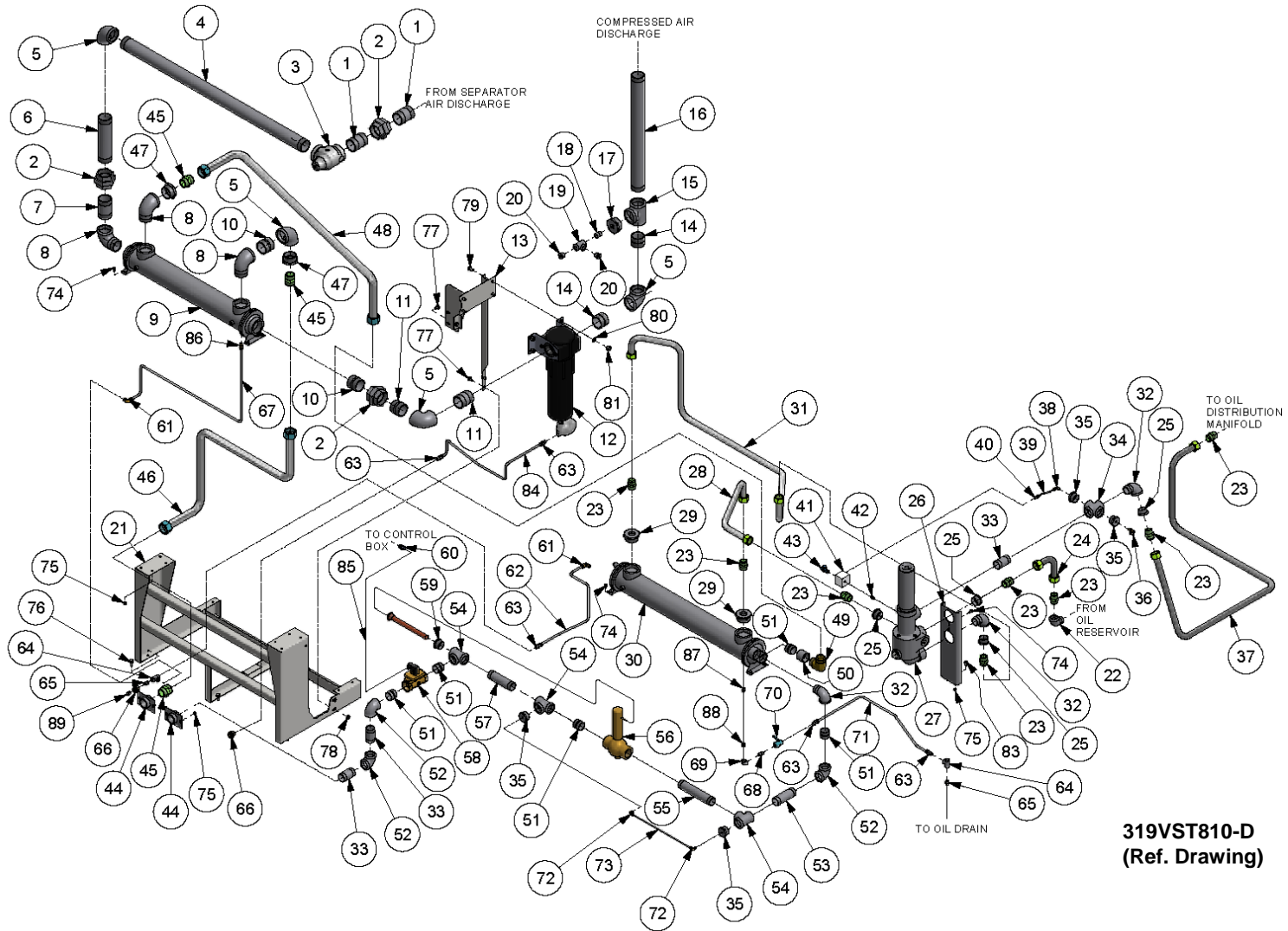
Order by Part Number and Description. Reference Numbers are for your convenience only.

FAN COOLER ASSEMBLY
(AIR COOLED)

Ref. No.	Name Of Part	Qty.	Part No.	Ref. No.	Name Of Part	Qty.	Part No.
							311VST4013, 304VST4013
							B/M
1	SUPPORT	1	CC1010029	37	PIPE BUSHING	2	64E60G
* 2	COUPLING	1	VP1009575	38	NIPPLE	1	63N48X380G
3	OIL FILTER ASSEMBLY (See page 28)		300VST2045	39	PIPE BUSHING	1	182858G
4	NIPPLE	1	63P1G	40	PIPE BUSHING	2	143814G
5	TUBE WITH FITTING	1	CC1010031	41	NIPPLE	1	63H1G
6	TUBE WITH FITTING	1	CC1010032	42	TEE	1	64G8G
7	TUBE WITH FITTING	1	CC1010033	43	SCREW	4	75K48
8	MOISTURE SEPARATOR (See page 63)	1	VP1021707	44	NUT	4	50AW5
9	VALVE	1	86N345	45	WASHER	4	95A3Z
10	TUBE WITH FITTING	1	CC1010035	46	COVER	1	CC1010039
11	SUPPORT	1	CC1010036	47	SCREW	74	75LM51
12	CONE	1	VP1010002	48	NUT	18	50AW5
13	FAN	1	VP1010001	49	FAN GUARD	1	CC1010040
14	NIPPLE	1	63LG	50	COVER	1	CC1010041
15	OIL COOLER			51	WASHER	30	95A5Z
	STANDARD	1	301ETV201	52	SCREW	8	75LM135
	SEACOAST	1	VP1016651	53	NUT	8	50AW35
16	AFTERCOOLER			54	WASHER	2	95B5Z
	STANDARD	1	301ETV292	55	NUT	2	50B5Z
	SEACOAST	1	VP1016652	56	SCREW	2	655EE07Z
18	ADAPTOR	1	VP1009900	57	WASHER	2	95A5Z
19	ADAPTOR	1	VP1009578	58	SCREW	4	655EG08Z
20	VALVE-M/PRESS (See page 29)	1	300ETV527	59	NUT	6	50B8Z
21	NIPPLE	1	63P12G	60	WASHER	6	95B8Z
22	COVER	1	CC1010037	61	WASHER	2	95A8Z
23	PIPE BUSHING	6	64E12G	62	SCREW	2	75K48
24	PLUG	2	64AA5G	63	INDICATOR	1	VP1013599
25	NIPPLE	1	63P2G	64	NIPPLE	1	63D21G
26	TUBE CONNECTOR	8	86H141	65	MANIFOLD	1	CC1010042
27	ELBOW	3	64C9G	66	TUBE FITTING	1	TEN001712
28	ELBOW	1	64D8G	67	TUBE FITTING	1	TEN001699
29	SUPPORT	1	CC1010038	68	TUBE (IN FEET)	1	85K3
30	NIPPLE	1	63P2G	69	TUBE FITTING	1	TEM001720
31	ELBOW	4	64C10G	70	TUBE (IN FEET)	2	85K6
32	NIPPLE	1	63L18G	71	TUBE FITTING	3	TEN001705
33	CROSS	1	64K21G	72	COUPLING	2	64EB613
34	UNION	1	64Z21G	73	TUBE (IN FEET)	4	85K6
35	NIPPLE	2	63P11G	74	COVER	2	CC1010044
36	TEE	1	64G23G	75	NIPPLE	1	63P2G

* For Repair, order Replacement Gasket Part Number 2118512.

**COOLERS & OIL PIPING
(WATER COOLED)
WITH SHUT-OFF VALVE & TEMPERATURE REGULATOR**

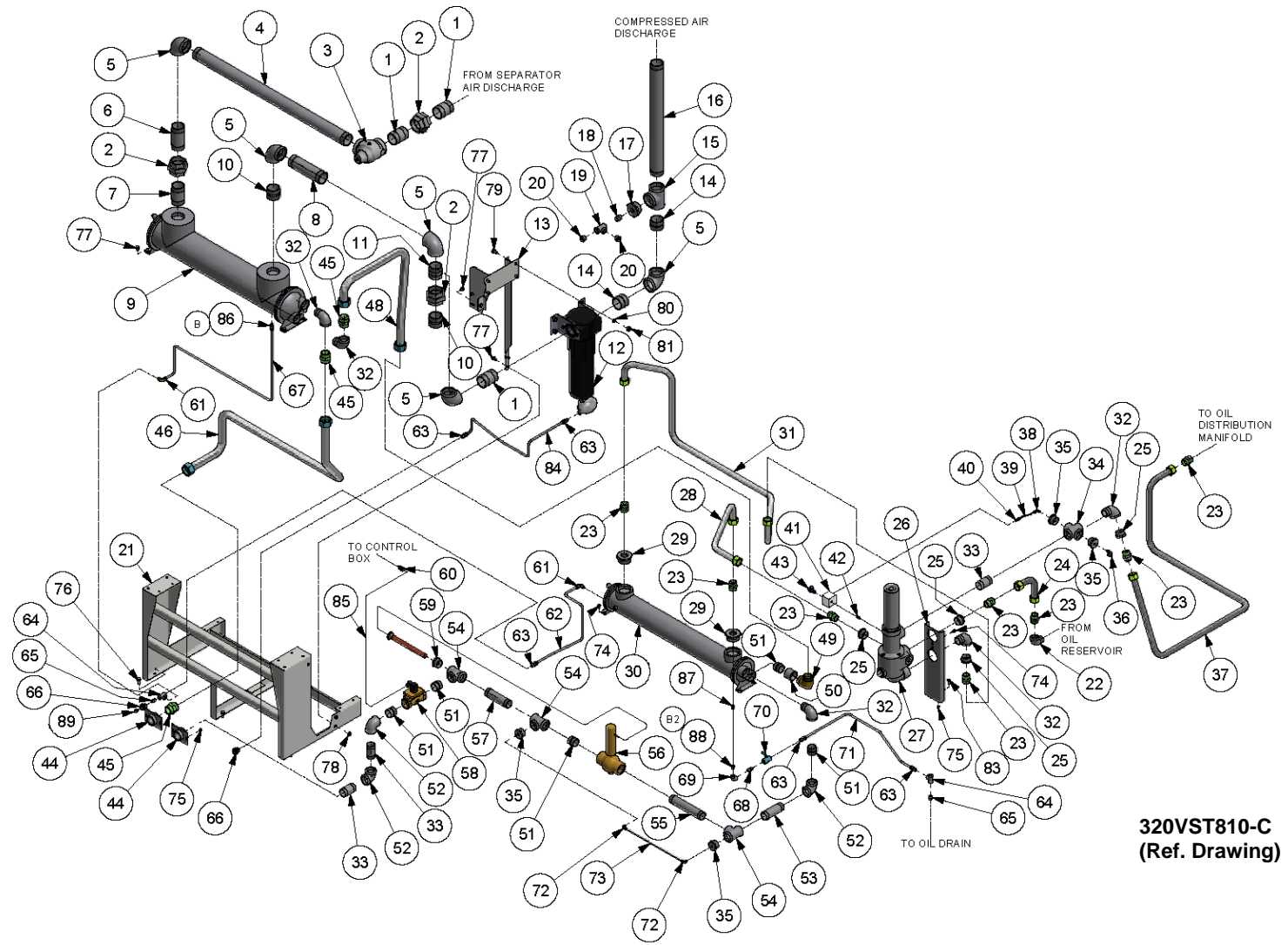


**319VST810-D
(Ref. Drawing)**

Order by Part Number and Description. Reference Numbers are for your convenience only.
COOLERS & OIL PIPING
(WATER COOLED)
WITH SHUT-OFF VALVE & TEMPERATURE REGULATOR

Ref. No.	Name of Part	Qty.	Part No.	Ref. No.	Name of Part	Qty.	B/M 310VST4013 Part No.
1	NIPPLE	2	63P13G	46	TUBE WITH FITTING	1	CC1017788
2	UNION	3	64Z21G	47	BUSHING	2	VP1052333G
3	VALVE-M/PRESS (See page 29)	1	300ETV527	48	TUBE WITH FITTING	1	CC1017789
4	NIPPLE	1	63N48X660G	49	ADAPTOR	1	119446
5	ELBOW	4	64C10G	50	COUPLING	1	64BK9G
6	NIPPLE	1	63N48X134G	51	NIPPLE	5	63L1G
7	NIPPLE	1	63P14G	52	ELBOW	3	64C9G
8	ELBOW	3	64D14G	53	NIPPLE	1	63L7G
9	AFTERCOOLER	1	300ETV292	54	TEE	3	64G1G
10	NIPPLE	2	63P1G	55	PIPE NIPPLE	1	63L33G
11	NIPPLE	2	63P4G	56	TEMPERATURE REGULATOR	1	90AR1117
12	MOISTURE SEPARATOR (See page 63) ..	1	VP1021707	57	NIPPLE	1	63L26G
13	SUPPORT	1	CC1016641	58	TWO-WAY CONTROL VALVE	1	90AR1151
14	NIPPLE	2	63P11G	59	BUSHING	1	64E99G
15	TEE	1	64G23G	60	ELECTRICAL FITTING	1	24CA2865
16	NIPPLE	1	63N48X360G	61	TUBE WITH FITTING	2	TEN001705
17	BUSHING	1	182858G	62	TUBE (IN FEET)	4	85K6
18	NIPPLE	1	63H1G	63	TUBE FITTING	5	TEN001705
19	TEE	1	64G8G	64	TEE	2	64G6G
20	BUSHING	2	143814G	65	NIPPLE	2	63F21G
21	SUPPORT	1	CC1016640	66	COUPLING	2	64EB613
22	ELBOW	1	64D8G	67	TUBE (IN FEET)	4	85K6
23	CONNECTOR	8	86H141	68	NIPPLE	1	63F1G
24	TUBE WITH FITTING	1	CC1010031	69	ELBOW	1	64C4G
25	BUSHING	4	64E12G	70	BALL VALVE	1	90AR241
26	SUPPORT	1	CC1010038	71	TUBE (IN FEET)	4	85K6
27	OIL FILTER ASSEMBLY (See page 28)	1	300VST2045	72	ELBOW	2	TEN001712
28	TUBE WITH FITTING	1	CC1017790	73	TUBE (N FEET)	2	85K3
29	BUSHING	2	64EB446G	74	SCREW	10	75LM51
30	OIL COOLER	1	300ETV349	75	NUT	14	50AW5
31	TUBE WITH FITTING	1	CC1017791	76	SCREW	7	75LM135
32	ELBOW	3	64D9G	77	SCREW	5	75LM268
33	NIPPLE	3	63L18G	78	NUT	9	50AW35
34	CROSS	1	64K21G	79	SCREW	4	75K48
35	BUSHING	4	64E60G	80	LOCKWASHER	4	95A3Z
36	OIL SAMPLING VALVE	1	86N345	81	NUT	4	50AW5
37	TUBE WITH FITTING	1	CC1010035	83	SCREW	2	75K48
38	TUBE WITH FITTING	1	86E220	84	TUBE (IN FEET)	4	85K6
39	TUBE (IN FEET)	2	85K3	85	CORD	1	VP1010780
40	TUBE FITTING	1	TEN001699	86	TUBE FITTING	1	TEN001704
41	MANIFOLD	1	CC1010042	87	NIPPLE	1	63E1G
42	NIPPLE	1	63D21G	88	BUSHING	1	64E4G
43	SERVICE INDICATOR	1	VP1013599	89	PLUG	1	64AA7G
44	WATER-MANIFOLD	2	300EHG072				
45	CONNECTOR	3	86H142				

**COOLERS & OIL PIPING
(SALT WATER COOLED)
WITH SHUT-OFF VALVE & TEMPERATURE REGULATOR**

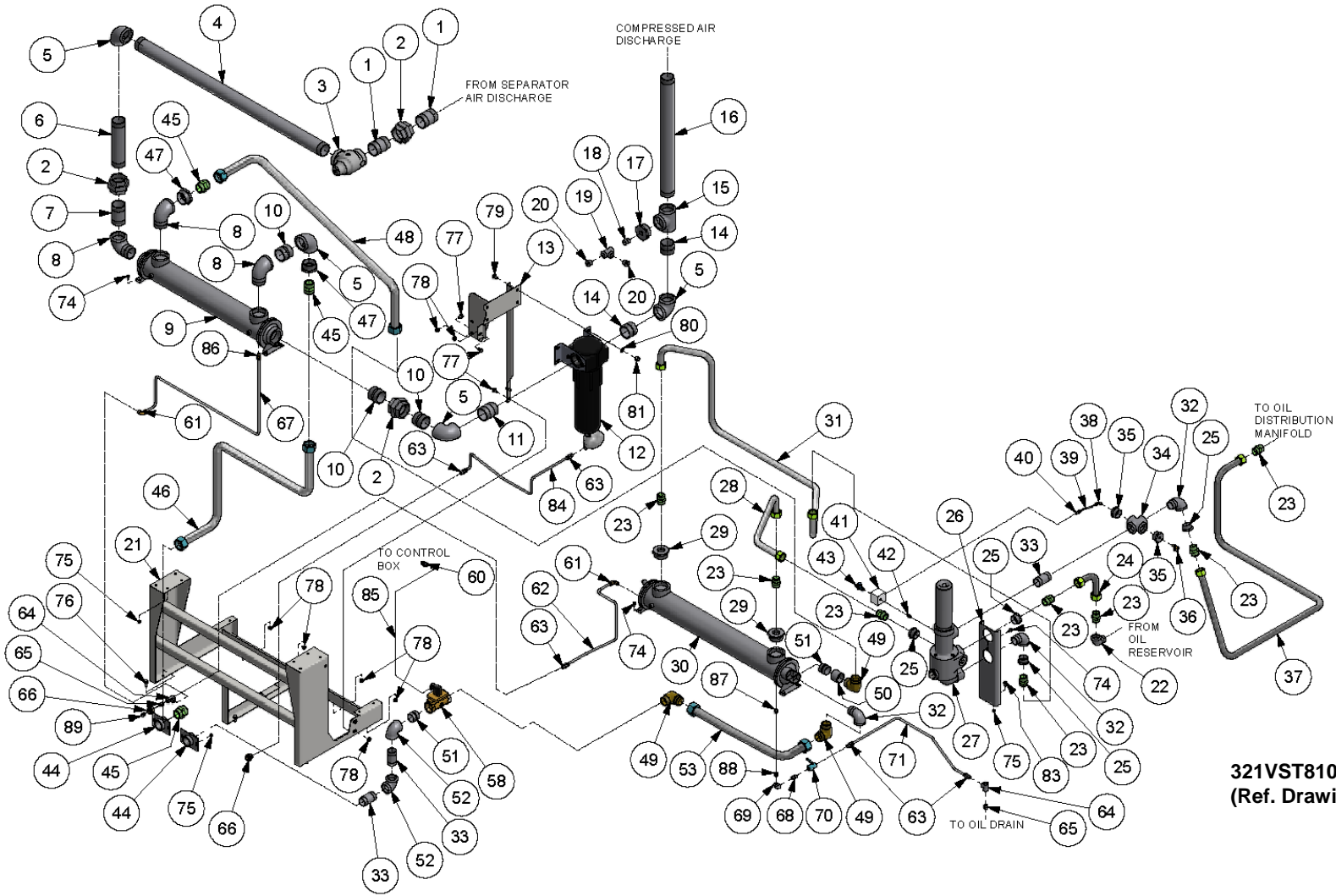


**320VST810-C
(Ref. Drawing)**

Order by Part Number and Description. Reference Numbers are for your convenience only.
COOLERS & OIL PIPING
(SALT WATER COOLED)
WITH SHUT-OFF VALVE & TEMPERATURE REGULATOR

Ref. No.	Name Of Part	Qty.	Part No.	Ref. No.	Name Of Part	Qty.	B/M 312VST4013 Part No.
1	NIPPLE.....	3	63P13G	45	CONNECTOR.....	3	86H142
2	UNION.....	3	64Z21G	46	TUBE WITH FITTING.....	1	CC1018081
3	VALVE-M/PRESS (See page 29).....	1	300ETV527	48	TUBE WITH FITTING.....	1	CC1018082
4	NIPPLE.....	1	63N48X570G	49	ADAPTOR.....	1	119446
5	ELBOW.....	5	64C10G	50	COUPLING.....	1	64BK9G
6	NIPPLE.....	1	63P16G	51	NIPPLE.....	5	63L1G
7	NIPPLE.....	1	63P14G	52	ELBOW.....	3	64C9G
8	NIPPLE.....	1	63P24G	53	NIPPLE.....	1	63L7G
9	AFTERCOOLER.....	1	302ETV292	54	TEE.....	3	64G1G
10	NIPPLE.....	2	63P1G	55	NIPPLE.....	1	63L33G
11	NIPPLE.....	1	63P12G	56	TEMPERATURE REGULATOR.....	1	90AR1117
12	MOISTURE SEPARATOR (See page 63) ..	1	VP1021707	57	NIPPLE.....	1	63L26G
13	SUPPORT.....	1	CC1016641	58	TWO-WAY CONTROL VALVE.....	1	90AR1151
14	NIPPLE.....	2	63P11G	59	BUSHING.....	1	64E99G
15	TEE.....	1	64G23G	60	ELECTRICAL FITTING.....	1	24CA2865
16	NIPPLE.....	1	63N48X360G	61	TUBE WITH FITTING.....	2	TEN001720
17	BUSHING.....	1	182858G	62	TUBE (IN FEET).....	4	85K6
18	NIPPLE.....	1	63H1G	63	TUBE WITH FITTING.....	5	86E215
19	TEE.....	1	64G8G	64	TEE.....	2	64G6G
20	BUSHING.....	2	143814G	65	NIPPLE.....	2	63F21G
21	SUPPORT.....	1	CC1016640	66	COUPLING.....	2	64EB613
22	ELBOW.....	1	64D8G	67	TUBE (IN FEET).....	4	85K6
23	CONNECTOR.....	8	86H141	68	NIPPLE.....	2	63F1G
24	TUBE WITH FITTING.....	1	CC1010031	69	ELBOW.....	1	64C4G
25	BUSHING.....	4	64E12G	70	BALL VALVE.....	1	90AR241
26	SUPPORT.....	1	CC1010038	71	TUBE (IN FEET).....	4	85K6
27	OIL FILTER ASSEMBLY (See page 28).....	1	300VST2045	72	ELBOW.....	2	TEN001712
28	TUBE WITH FITTING.....	1	CC1017790	73	TUBE (IN FEET).....	2	85K3
29	BUSHING.....	2	64EB446G	74	SCREW.....	6	75LM51
30	OIL COOLER.....	1	301ETV349	75	NUT.....	10	50AW5
31	TUBE WITH FITTING.....	1	CC1017791	76	SCREW.....	7	75LM135
32	ELBOW.....	5	64D9G	77	SCREW.....	9	75LM268
33	NIPPLE.....	3	63L18G	78	NUT.....	13	50AW35
34	CROSS.....	1	64K21G	79	SCREW.....	4	75K48
35	PIPE BUSHING.....	4	64E60G	80	LOCKWASHER.....	4	95A3Z
36	OIL SAMPLING VALVE.....	1	86N345	81	NUT.....	4	50AW5
37	TUBE WITH FITTING.....	1	CC1010035	83	SCREW.....	2	75K48
38	TUBE WITH FITTING.....	1	TEN001712	84	TUBE (IN FEET).....	4	85K6
39	TUBE (IN FEET).....	2	85K3	85	CORD.....	1	VP1010780
40	TUBE FITTING.....	1	TEN001699	86	TUBE FITTING.....	1	TEN001706
41	MANIFOLD.....	1	CC1010042	87	NIPPLE.....	1	63E1G
42	NIPPLE.....	1	63D21G	88	BUSHING.....	1	64E4G
43	SERVICE INDICATOR.....	1	VP1013599	89	PLUG.....	1	64AA7G
44	WATER MANIFOLD.....	2	300EHG072				

**COOLERS & OIL PIPING
(WATER COOLED)
WITH SHUT-OFF VALVE**

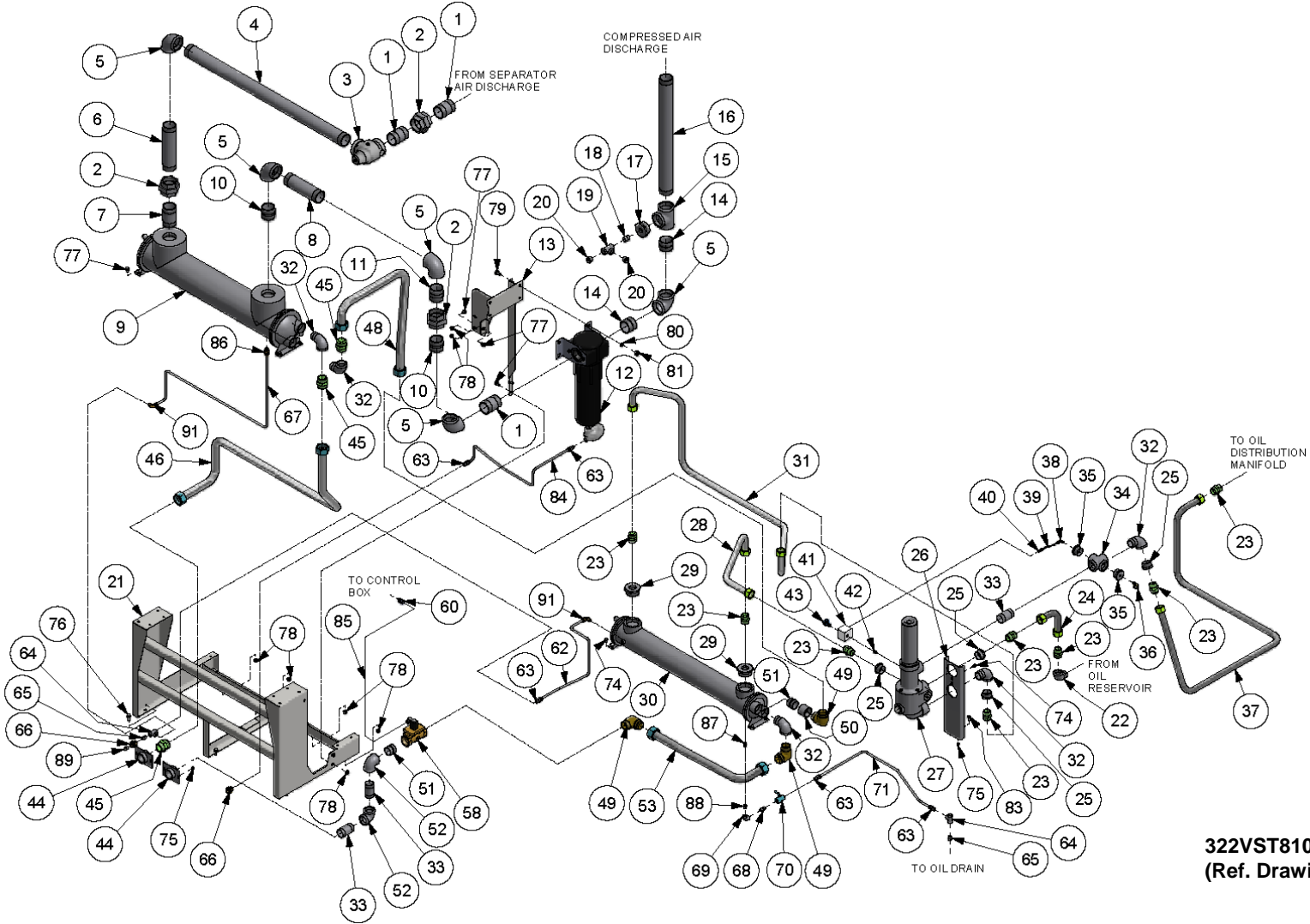


**321VST810-C
(Ref. Drawing)**

Order by Part Number and Description. Reference Numbers are for your convenience only.
COOLERS & OIL PIPING
(WATER COOLED)
WITH SHUT-OFF VALVE

Ref. No.	Name Of Part	Qty.	Part No.	Ref. No.	Name Of Part	Qty.	B/M 300VST4003 Part No.
1	NIPPLE	2	63P13G	42	NIPPLE	2	63P13G
2	UNION	3	64Z21G	43	SERVICE INDICATOR	3	64Z21G
3	VALVE-M/PRESS (See page 29)	1	300ETV527	44	WATER MANIFOLD	2	300EHG072
4	NIPPLE	1	63N48X660G	45	CONNECTOR	3	86H142
5	ELBOW	4	64C10G	46	TUBE WITH FITTING	1	CC1017788
6	NIPPLE	1	63N48X134G	47	BUSHING	2	VP1052333G
7	NIPPLE	1	63P14G	48	TUBE WITH FITTING	1	CC1017789
8	ELBOW	3	64D14G	49	ADAPTOR	3	119446
9	AFTERCOOLER	1	300ETV292	50	COUPLING	1	64BK9G
10	NIPPLE	3	63P1G	51	NIPPLE	2	63L1G
11	NIPPLE	1	63P2G	52	ELBOW	2	64C9G
12	MOISTURE SEPARATOR (See page 63)	1	VP1021707	53	TUBE WITH FITTING	1	CC1023634
13	SUPPORT	1	CC1016641	58	TWO-WAY CONTROL VALVE	1	90AR1151
14	NIPPLE	2	63P11G	60	ELECTRICAL FITTING	1	24CA2865
15	TEE	1	64G23G	61	TUBE WITH FITTING	2	TEN001720
16	NIPPLE	1	63N48X360G	62	TUBE (IN FEET)	4	85K6
17	BUSHING	1	182858G	63	TUBE FITTING	5	TEN001705
18	NIPPLE	1	63H1G	64	TEE	2	64G6G
19	TEE	1	64G8G	65	NIPPLE	2	63F21G
20	BUSHING	2	143814G	66	COUPLING	2	64EB613
21	SUPPORT	1	CC1016640	67	TUBE (IN FEET)	4	85K6
22	ELBOW	1	64D8G	68	NIPPLE	1	63F1G
23	CONNECTOR	8	86H141	69	ELBOW	1	64C4G
24	TUBE WITH FITTING	1	CC1010031	70	BALL VALVE	1	90AR241
25	BUSHING	4	64E12G	71	TUBE (IN FEET)	4	85K6
26	SUPPORT	1	CC1010038	74	SCREW	10	75LM51
27	OIL FILTER ASSEMBLY (See page 28)	1	300VST2045	75	NUT	14	50AW5
28	TUBE WITH FITTING	1	CC1017790	76	SCREW	7	75LM135
29	BUSHING	2	64EB446G	77	SCREW	5	75LM268
30	OIL COOLER	1	300ETV349	78	NUT	9	50AW35
31	TUBE WITH FITTING	1	CC1017791	79	SCREW	4	655EF04Z
32	ELBOW	3	64D9G	80	LOCKWASHER	4	95B7
33	NIPPLE	3	63L18G	81	NUT	4	50B7
34	CROSS	1	64K21G	83	SCREW	2	75K48
35	BUSHING	2	64E60G	84	TUBE (IN FEET)	4	85K6
36	OIL SAMPLING VALVE	1	86N345	85	CORD	1	VP1010780
37	TUBE WITH FITTING	1	CC1010035	86	TUBE FITTING	1	TEN001704
38	TUBE WITH FITTING	1	86E220	87	NIPPLE	1	63E1G
39	TUBE (IN FEET)	2	85K3	88	BUSHING	1	64E4G
40	TUBE FITTING	1	TEN001699	89	PLUG	1	64AA7G
41	MANIFOLD	1	CC1010042				

**COOLERS & OIL PIPING
(SALT WATER COOLED)
WITH SHUT-OFF VALVE**

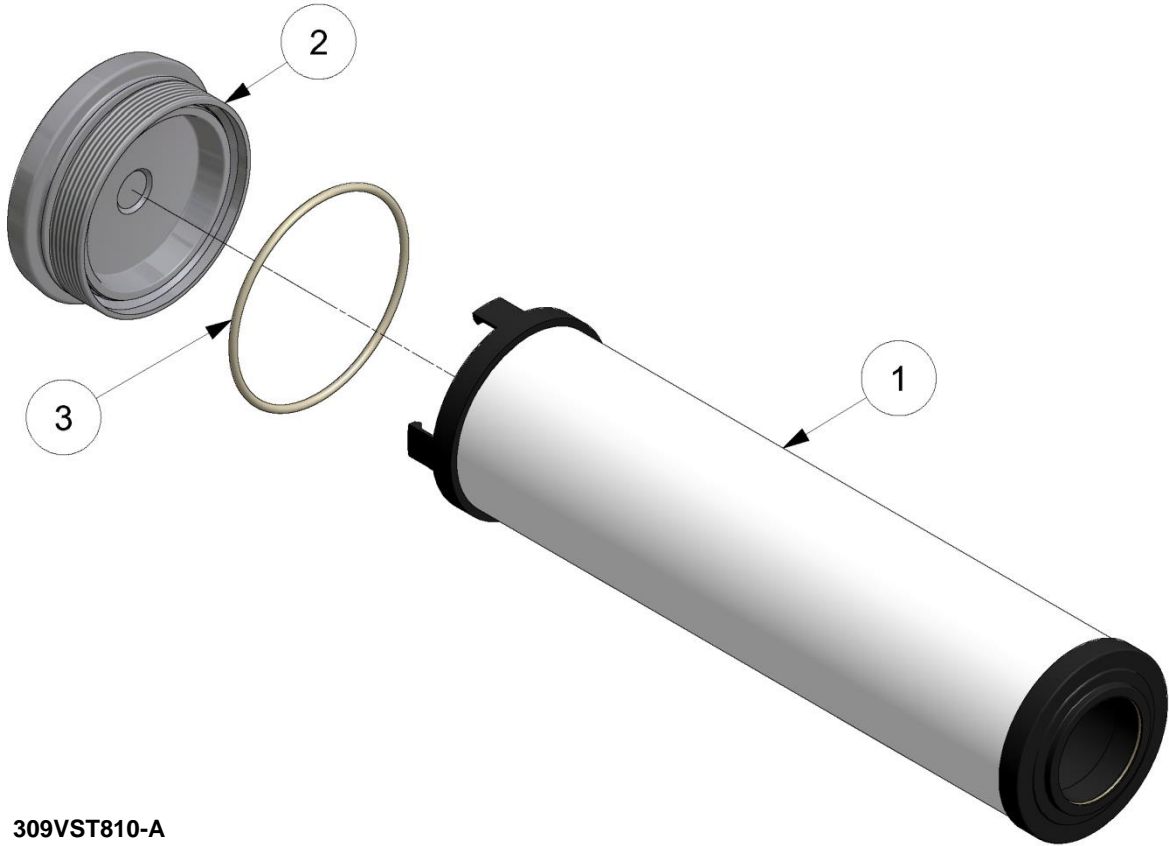


**322VST810-C
(Ref. Drawing)**

Order by Part Number and Description. Reference Numbers are for your convenience only.
COOLERS & OIL PIPING
(SALT WATER COOLED)
WITH SHUT-OFF VALVE

Ref. No.	Name Of Part	Qty.	Part No.	Ref. No.	Name Of Part	Qty.	B/M 301VST4003 Part No.
1	NIPPLE	3	63P13G	41	MANIFOLD.....	1	CC1010042
2	UNION	3	64Z21G	42	NIPPLE	1	63D21G
3	VALVE-M/PRESS (See page 29).....	1	300ETV527	43	SERVICE INDICATOR	1	VP1013599
4	NIPPLE	1	63N48X570G	44	WATER MANIFOLD.....	2	300EHG072
5	ELBOW.....	5	64C10G	45	CONNECTOR	3	86H142
6	NIPPLE.....	1	63P16G	46	TUBE WITH FITTING.....	1	CC1018081
7	NIPPLE.....	1	63P14G	48	TUBE WITH FITTING.....	1	CC1018082
8	NIPPLE.....	1	63P24G	49	ADAPTOR.....	1	119446
9	AFTERCOOLER	1	302ETV292	50	COUPLING	1	64BK9G
10	NIPPLE.....	2	63P1G	51	NIPPLE	5	63L1G
11	NIPPLE.....	1	63P12G	52	ELBOW	3	64C9G
12	MOISTURE SEPARATOR (See page 63)....	1	VP1021707	53	NIPPLE	1	63L7G
13	SUPPORT	1	CC1016641	58	TWO-WAY CONTROL VALVE	1	90AR1151
14	NIPPLE	2	63P11G	60	ELECTRICAL FITTING	1	24CA2865
15	TEE.....	1	64G23G	61	TUBE WITH FITTING.....	2	TEN001720
16	NIPPLE.....	1	63N48X360G	62	TUBE (IN FEET).....	4	85K6
17	BUSHING	1	182858G	63	TUBE WITH FITTING.....	6	TEN001705
18	NIPPLE.....	1	63H1G	64	TEE	2	64G6G
19	TEE.....	1	64G8G	65	NIPPLE	2	63F21G
20	BUSHING	2	143814G	66	COUPLING	2	64EB613
21	SUPPORT	1	CC1016640	67	TUBE (IN FEET).....	4	85K6
22	ELBOW.....	1	64D8G	68	NIPPLE	2	63F1G
23	CONNECTOR.....	8	86H141	69	ELBOW	1	64C4G
24	TUBE WITH FITTING.....	1	CC1010031	70	BALL VALVE.....	1	90AR241
25	BUSHING	4	64E12G	71	TUBE (IN FEET).....	4	85K6
26	SUPPORT	1	CC1010038	74	SCREW.....	6	75LM51
27	OIL FILTER ASSEMBLY (See page 28).....	1	300VST2045	75	NUT.....	10	50AW5
28	TUBE WITH FITTING.....	1	CC1017790	76	SCREW.....	7	75LM135
29	BUSHING	2	64EB446G	77	SCREW.....	9	75LM268
30	OIL COOLER.....	1	301ETV349	78	NUT.....	13	50AW35
31	TUBE WITH FITTING.....	1	CC1017791	79	SCREW.....	4	655EF04Z
32	ELBOW.....	5	64D9G	80	LOCKWASHER.....	4	95A3Z
33	NIPPLE.....	3	63L18G	81	NUT.....	4	50AW5
34	CROSS	1	64K21G	83	SCREW.....	2	75K48
35	PIPE BUSHING	2	64E60G	84	TUBE (IN FEET).....	4	85K6
36	OIL SAMPLING VALVE	1	86N345	85	CORD	1	VP1010780
37	TUBE WITH FITTING.....	1	CC1010035	86	TUBE FITTING.....	1	TEN001704
38	TUBE WITH FITTING.....	1	86E220	87	NIPPLE	1	63E1G
39	TUBE (IN FEET)	2	85K3	88	BUSHING.....	1	64E5G
40	TUBE FITTING	1	TEN001699	89	PLUG	1	64AA7G

Order by Part Number and Description. Reference Numbers are for your convenience only.



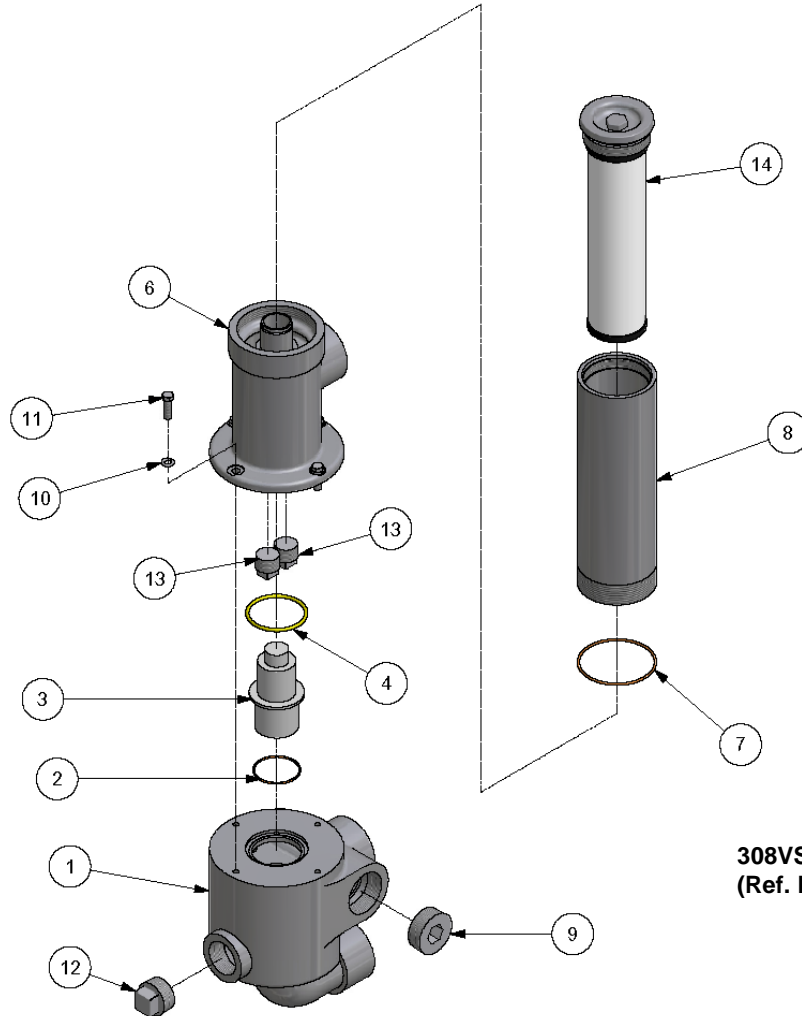
309VST810-A
(Ref. Drawing)

OIL FILTER ELEMENT ASSEMBLY

Ref. No.	Name Of Part	B/M 300VST369 Qty.	Part No.
* 1	ELEMENT	1	2118345
2	COVER	1	2118343
3	O-RING	1	25BC298

* Part Included in Routine Maintenance Kit Part Number 306VST6003. See Page 64.

Order by Part Number and Description. Reference Numbers are for your convenience only.

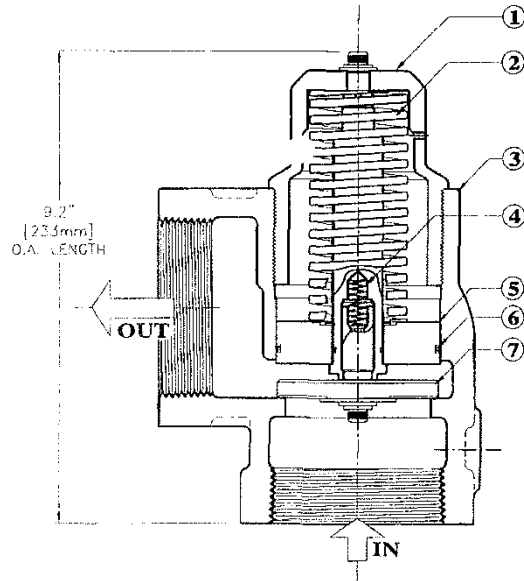


308VST810-A
(Ref. Drawing)

OIL FILTER ASSEMBLY

Ref. No.	Name Of Part	Qty.	Part No.
1	MANIFOLD.....	1	200EAU116
2	O-RING	1	25BC127
3	ELEMENT	1	93C9
4	O-RING	1	25BC175
6	MANIFOLD.....	1	201EAU116
7	O-RING	1	25BC380
8	OIL FILTER BODY.....	1	300ETY032
9	PLUG	1	64B7
10	LOCKWASHER.....	4	95B3
11	SCREW.....	4	655ED050
12	PLUG	1	64AA2
13	PLUG	2	2118347
14	OIL FILTER ELEMENT ASSEMBLY (See page 27)	1	300VST369

Order by Part Number and Description. Reference Numbers are for your convenience only.

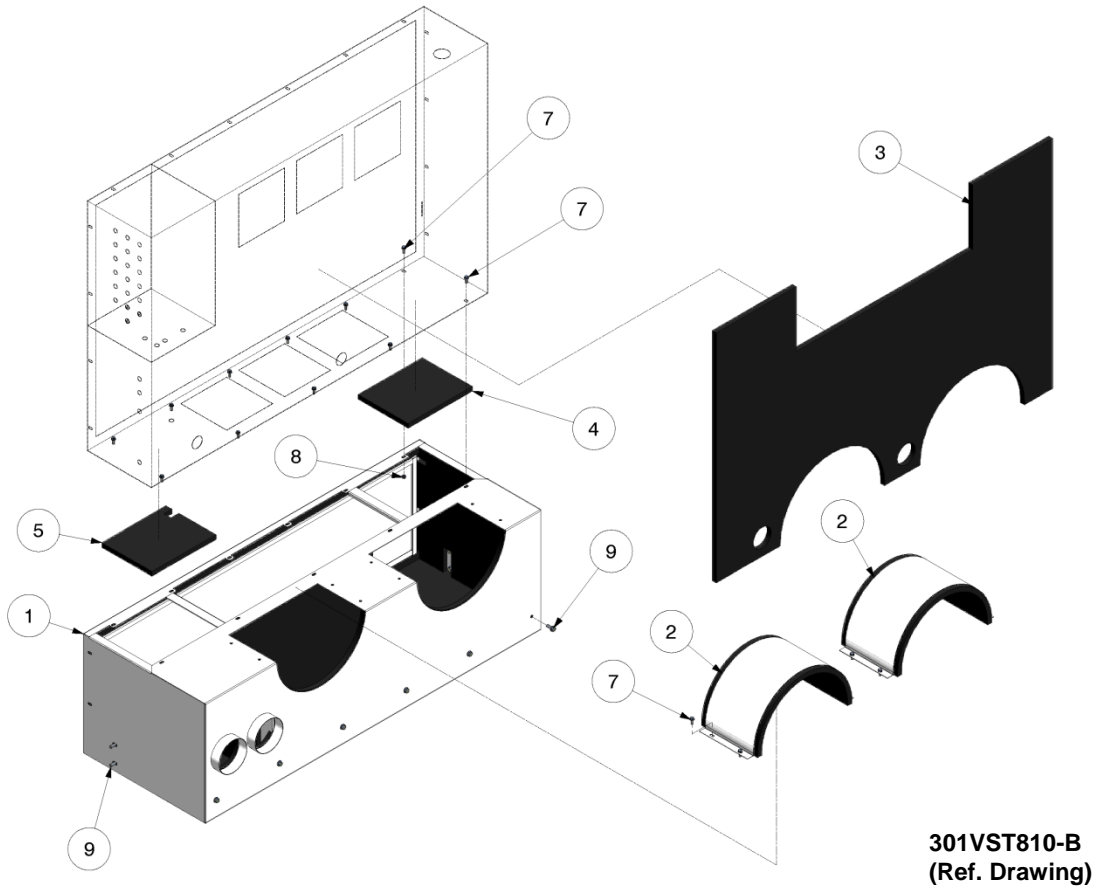


MINIMUM PRESSURE/CHECK VALVE

Name Of Part		Qty.	Part No.
MINIMUM PRESSURE VALVE ASSEMBLY		1	300ETV527
REPAIR KIT - Includes the following:.....		1	2118549
1	CAP.....	1	
* 2	SPRING (MAIN).....	1	
3	BODY.....	1	
* 4	SPRING (CV).....	1	
5	PISTON ASSEMBLY	1	
* 6	O-RING	1	
* 7	CV ASSEMBLY.....	1	

* Included in Repair Kit 2118549.

Order by Part Number and Description. Reference Numbers are for your convenience only.

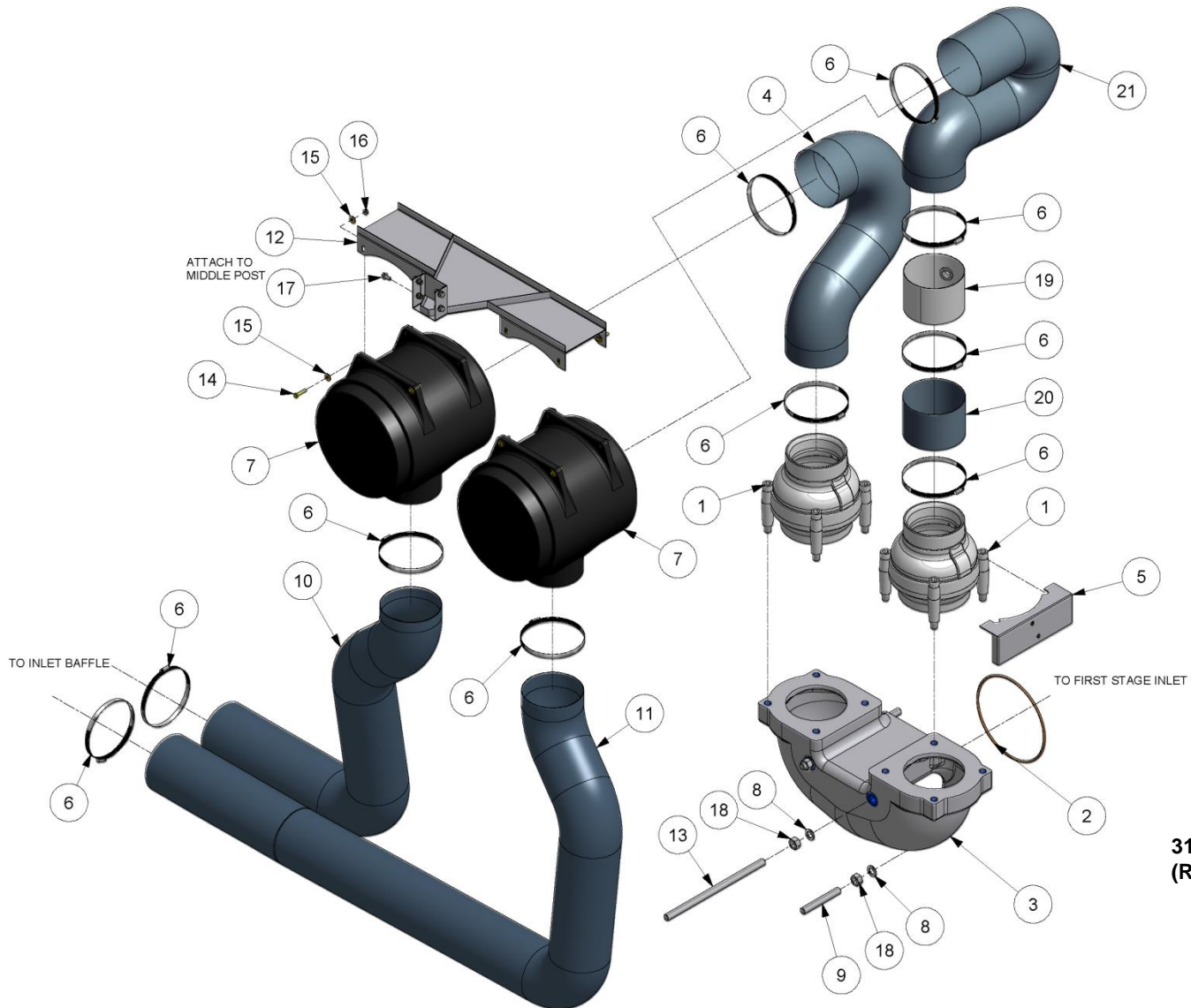


301VST810-B
(Ref. Drawing)

MOTOR AIR DUCTS

Ref. No.	Name Of Part	300VST4017, B/M 300VST4013 Qty.	Part No.
1	CONTROL BOX SUPPORT BAFFLE	1	CC1009726
2	BAFFLE, MAIN MOTOR	2	CC1009730
3	ACOUSTIC FOAM	1	CC1009727
4	ACOUSTIC FOAM	1	CC1009728
5	ACOUSTIC FOAM	1	CC1009729
7	SCREW	19	75K48
8	NUT	11	50AW5
9	SCREW	10	75LM135

INLET VALVE & AIR FILTER PARTS

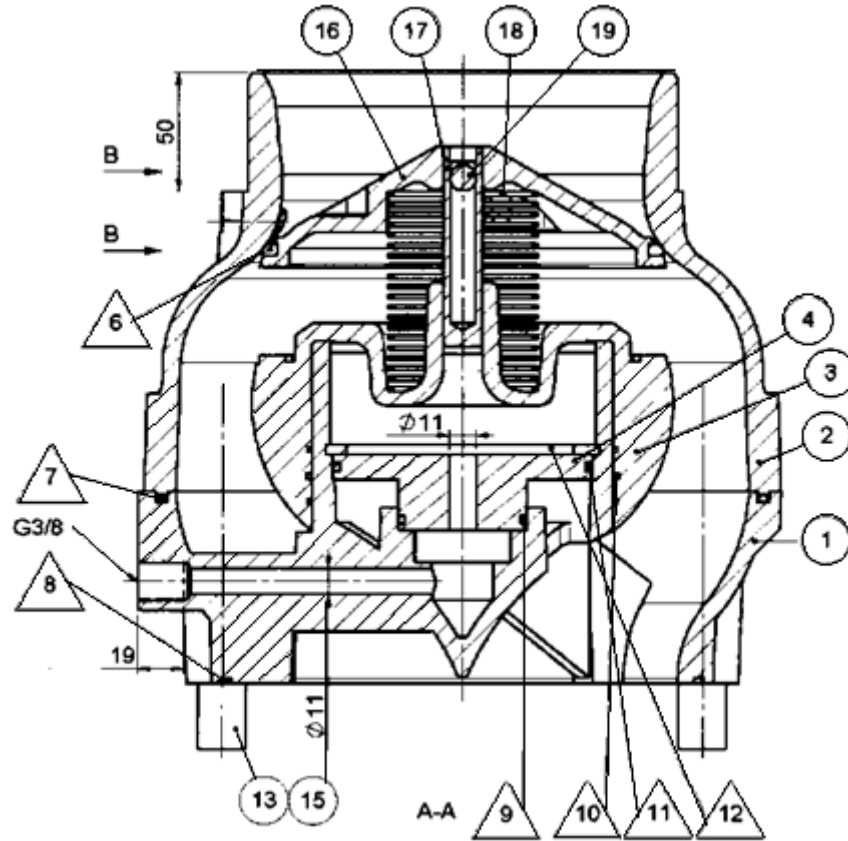


Order by Part Number and Description. Reference Numbers are for your convenience only.

INLET VALVE & AIR FILTER PARTS

Ref. No.	Name Of Part	B/M Qty.	309VST4013 Part No.
1	INLET VALVE.....	2	CC1036372
2	O-RING	1	25BC402
3	ELBOW	1	CC1058216
4	HOSE (IN FEET)	6	29BB2558
5	SUPPORT	1	CC1071743
6	CLAMP	10	2009499
* 7	AIR FILTER	2	5L355
8	SPRING.....	4	671HLHR20Z
9	STUD.....	2	79L221
10	HOSE (IN FEET)	6	29BB2558
11	HOSE (IN FEET)	10	29BB2558
12	SUPPORT	1	CC1078112
13	STUD.....	2	VP1056387
14	SCREW	8	75A98Z
15	WASHER.....	16	95A2Z
16	NUT	8	50AW4
17	SCREW	4	75LM51
18	HEX NUT.....	4	668RMCA20Z
19	MANIFOLD.....	1	300ETK690
20	HOSE (IN INCHES).....	5	29BB2558
21	HOSE (IN FEET)	5	29BB2558
*	AIR FILTER ELEMENT (FOR REPAIR) not shown.....	1	5L356

INLET VALVE



Order by Part Number and Description. Reference Numbers are for your convenience only.

INLET VALVE

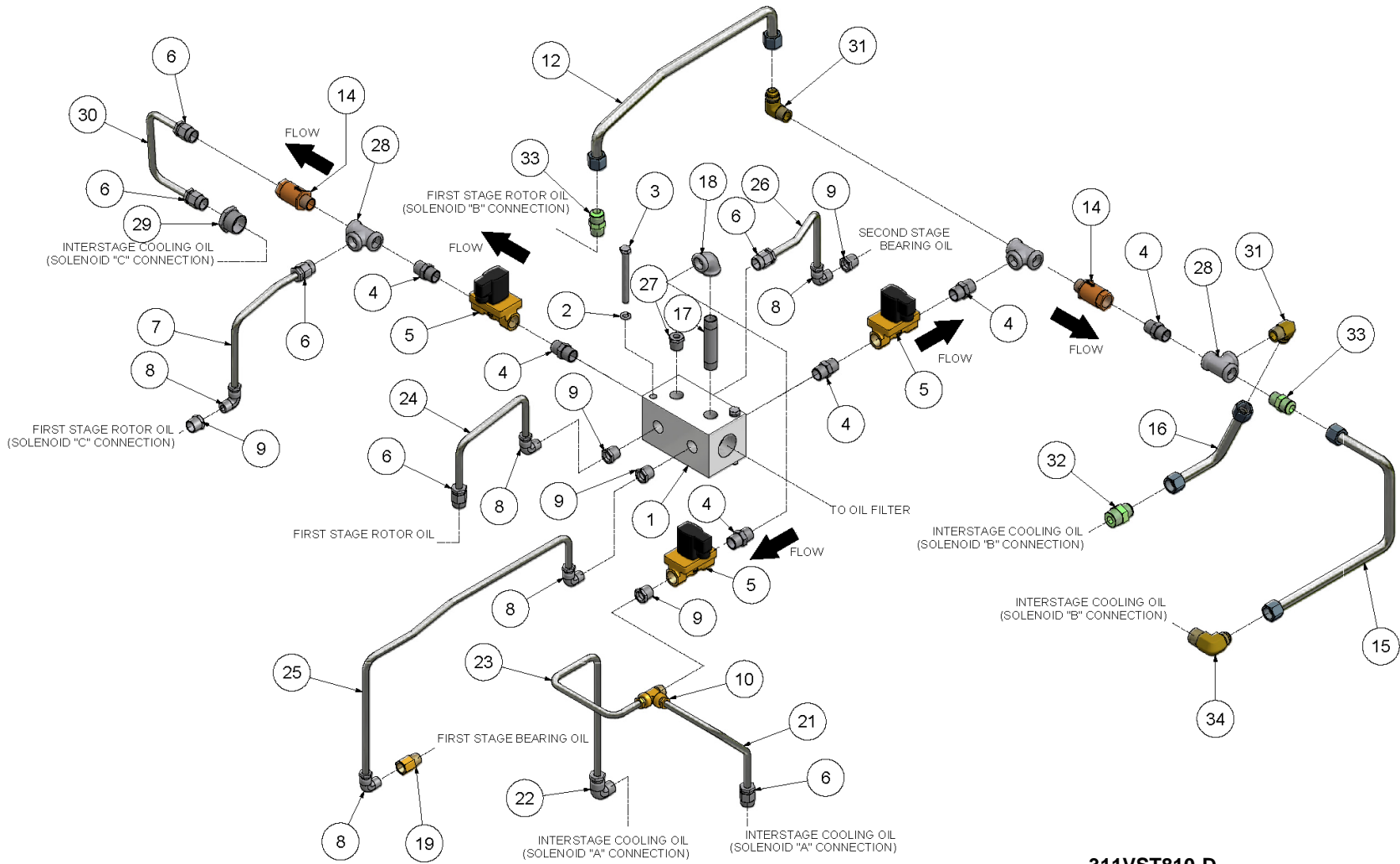
B/M: CC1036372

Ref. No.	Name of Part	Qty.	Part No.
1	INLET HOUSING	1	VP1033981
2	INLET HOUSING	1	VP1033982
+ 3	PISTON	1	VP1033983
4	COVER.....	1	VP1036378
* 6	GASKET	1	VP1033984
* 7	O-RING	1	VP1033988
* 8	O-RING	1	VP1033989
* 9	O-RING	1	VP1033990
* 10	O-RING	1	VP1033992
* 11	O-RING	1	VP1033993
* 12	RETAINER	1	VP1033997
13	SCREW	4	VP1034000
15	NUT	4	VP1033986
+ 16	PLATE	1	VP1034812
+ 17	PIN	1	VP1034813
+ 18	VALVE SPRING	1	VP1034814
+ 19	BALL BEARING	1	VP1034815

- * Parts included in Inlet Valve Seal Kit Part Number VP1036374. Refer to page 67.
- + Parts included in Inlet Valve Repair Kit Part Number VP1036375. Refer to page 67.

NOTE: Individual Parts in Kits are not available for sale.

OIL DISTRIBUTION



311VST810-D
(Ref. Drawing)

Order by Part Number and Description. Reference Numbers are for your convenience only.

OIL DISTRIBUTION

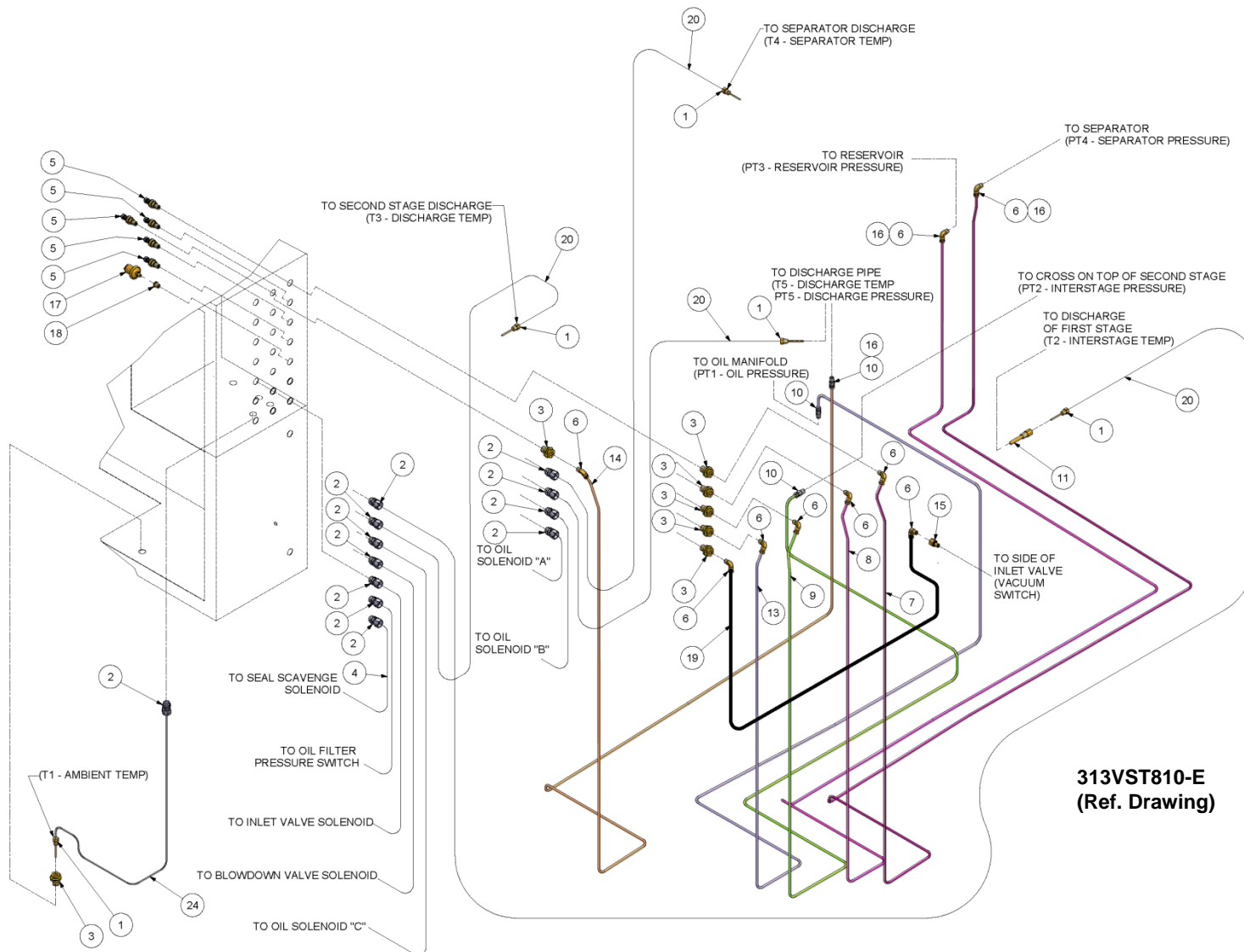
Ref. No.	Name Of Part	B/M Qty.	307VST4013 Part No.
1	OIL DISTRIBUTION MANIFOLD	1	CC1010165
2	WASHER.....	2	671HLHR12Z
3	SCREW	2	665HMCA12120Z
4	NIPPLE.....	6	VP1051857
Δ *5	CONTROL VALVE	3	90AR1148
6	TUBE FITTING.....	6	TEN001706
7	TUBE (IN FEET).....	1	85K6
8	ELBOW	5	TEN001720
9	PIPE BUSHING.....	5	64E95G
10	TUBE WITH FITTING.....	1	TEN001729
12	TUBE WITH FITTING.....	1	CC1051993
** 14	CHECK VALVE	2	90AR1135
15	TUBE WITH FITTING.....	1	CC10151992
16	TUBE WITH FITTING.....	1	CC10151991
17	NIPPLE.....	1	63U12X44G
18	ELBOW	1	64C5G
19	ADAPTOR.....	1	86H214
21	TUBE (IN FEET).....	1	85K6
22	TUBE FITTING.....	1	TEN001721
23	TUBE (IN FEET).....	1	85K6
24	TUBE (IN FEET).....	1	85K6
25	TUBE (IN FEET).....	2	85K6
26	TUBE (IN FEET).....	1	85K6
27	BUSHING.....	1	64E3G
28	TEE	3	64G7G
29	BUSHING	1	64E45G
30	TUBE (IN FEET).....	1	85K6
31	ADAPTOR.....	2	29Z241
32	TUBE FITTING.....	1	8504804
33	TUBE CONNECTOR.....	2	86H137
34	ADAPTOR.....	1	5000798

* Parts Included in Electrical Control Kit Part Number 300VST6013. See page 64.

** Parts Included in Pneumatic Control Kit Part Number 302VST6013. See page 64.

Δ For Repair of DIN Connector, Order Part Number 2118514.

CONTROLS LINES – TEMPERATURE & PRESSURE



313VST810-E
(Ref. Drawing)

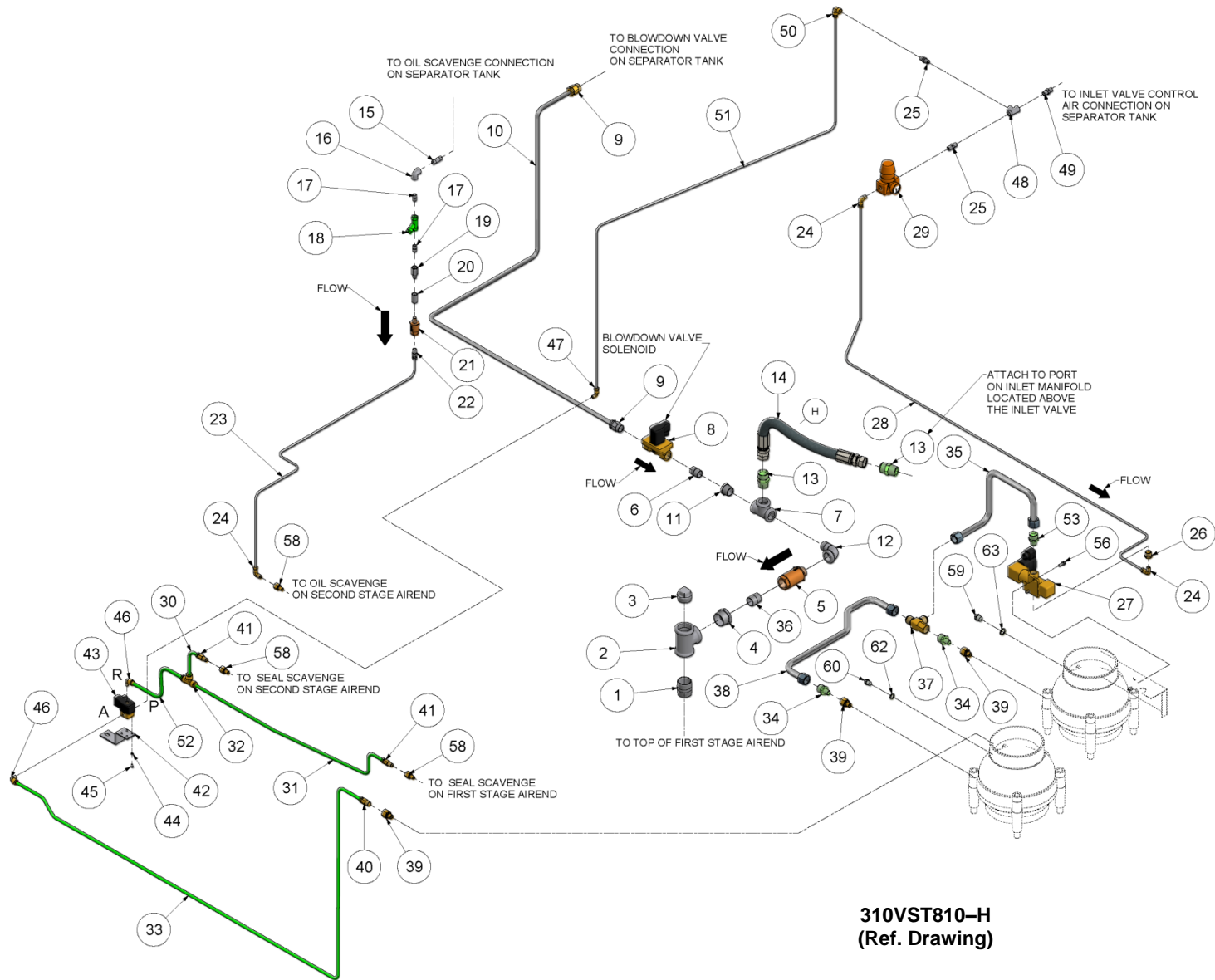
Order by Part Number and Description. Reference Numbers are for your convenience only.

CONTROLS LINES – TEMPERATURE & PRESSURE

Ref. No.	Name Of Part	B/M: 300VST4052, 300ETV4052	
		Qty.	Part No.
* 1	ELECTRICAL PROBE	5	VP1018671
2	ELECTRICAL FITTING.....	11	24CA2865
3	COUPLING	7	64EB368
4	CORD	6	VP1010780
* 5	PRESSURE TRANSDUCER	5	88H365
6	TUBE FITTING	9	TEN001712
7	TUBE (IN FEET)	20	85K3
8	TUBE (IN FEET)	20	85K3
9	TUBE (IN FEET)	18	85K3
10	TUBE FITTING	2	TEN001699
11	THERMAL WELL.....	1	CC1010205
12	CABLE (IN FEET).....	26	97J94
13	TUBE (IN FEET)	15	85K3
14	TUBE (IN FEET)	12	85K3
15	ADAPTOR.....	1	86H175
16	FITTING	3	86E244
* 17	VACUUM SWITCH	1	88H195
18	BUSHING.....	1	64E28
19	TUBE (IN FEET)	10	85K3
* 20	THERMISTOR CABLE (30 FEET).....	4	VP1018672
* 21	THERMISTOR CABLE (8 FEET).....	1	VP1018675

* Parts Included In Electrical Control Kit Part Number 300VST6013. See page 64.

CONTROL LINES



310VST810-H
(Ref. Drawing)

Order by Part Number and Description. Reference Numbers are for your convenience only.

CONTROL LINES

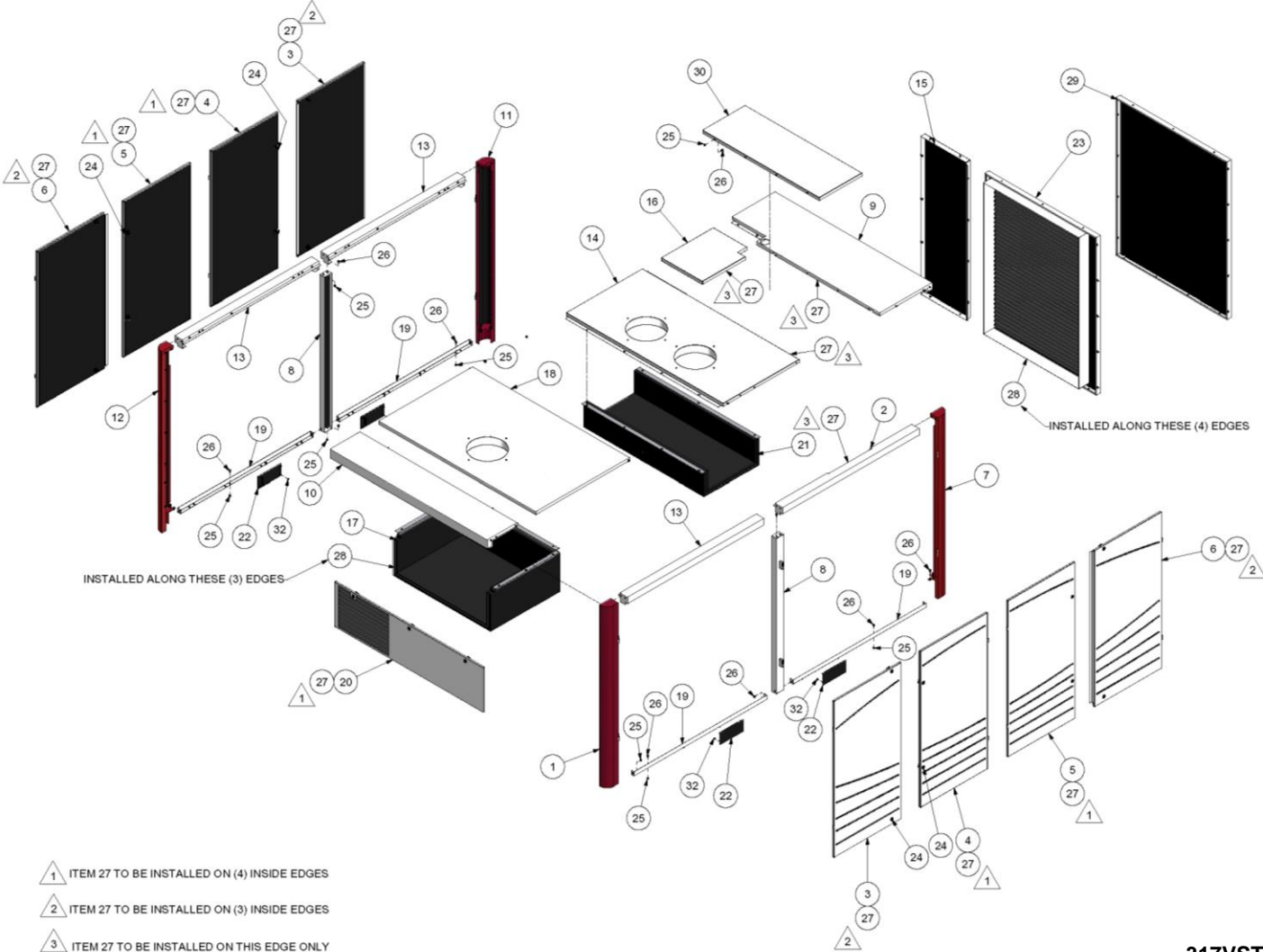
Ref. No.	Name Of Part	Qty.	Part No.	Ref. No.	Name Of Part	B/M Qty.	306VST4013 Part No.
1	NIPPLE	1	63AP40G	30	TUBE (IN FEET).....	1	85G5
2	TEE	1	64G11G	31	TUBE (IN FEET).....	4	85K5
3	PLUG	1	64AA2G	32	TUBE FITTING	1	TEN001737
4	BUSHING.....	1	64E13G	33	TUBE (IN FEET).....	10	85G5
** 5	VALVE-CHECK.....	1	90AR1136	34	ADAPTOR	2	VP1070195
6	NIPPLE	1	63G1G	35	TUBE WITH FITTING.....	1	CC1078224
7	TEE	1	64G8G	36	NIPPLE.....	1	63H1G
Δ* 8	CONTROL VALVE TWO-WAY	1	90AR1215	37	ADAPTOR	1	VP1071592
9	TUBE FITTING.....	2	TEN001706	38	TUBE WITH FITTING.....	1	CC1078225
10	TUBE (IN FEET).....	8	85K6	39	ADAPTOR	3	86H176
11	BUSHING	1	64E16G	40	TUBE FITTING	1	TEN001702
12	ELBOW	1	64D10G	41	TUBE FITTING	2	TEN001701
13	CONNECTOR	2	86E138	42	BRACKET.....	1	CC1025288
14	HOSE	1	VP1100661	43	SOLENOID	1	91B252
15	NIPPLE	1	86N384	44	LOCKWASHER	4	671HLHR05Z
16	ELBOW	1	64C2G	45	SCREW	4	75G68
17	NIPPLE	2	86N384	46	TUBE FITTING	2	TEN001713
** 18	STRAINER	1	82E46	47	TUBE FITTING	1	TEN001711
19	ORIFICE.....	1	300ETK814	48	TEE	1	64G3G
20	COUPLING	1	64BK2G	49	FILTER	1	82E54
** 21	VALVE-CHECK.....	1	90AR1138	50	TUBE FITTING	1	86E230
22	TUBE FITTING.....	3	TEN001699	51	TUBE (IN FEET).....	8	85K3
23	TUBE (IN FEET).....	4	85K3	52	TUBE (IN FEET).....	2	85G5
24	TUBE FITTING.....	3	86E220	53	CONNECTOR	1	86H145
25	NIPPLE	2	86N384	56	SCREW	2	75LM48
26	BUSHING.....	1	64E2G	58	ADAPTOR	3	88H175
* 27	VALVE SOLENOID	1	91B255	59	PLUG.....	1	64AA26
28	TUBE (IN FEET).....	8	85K3	60	PLUG.....	1	64AA23
** 29	REGULATOR.....	1	TEN000580	62	GASKET	1	25BC860
				63	GASKET	1	25BC871

* Parts Included in Electrical Control Kit Part Number 300VST6013. See page 64.

** Parts Included in Pneumatic Control Kit Part Number 302VST6013. See page 64

Δ For Repair Of DIN Connector, Order Part Number 2118514.

ENCLOSURE



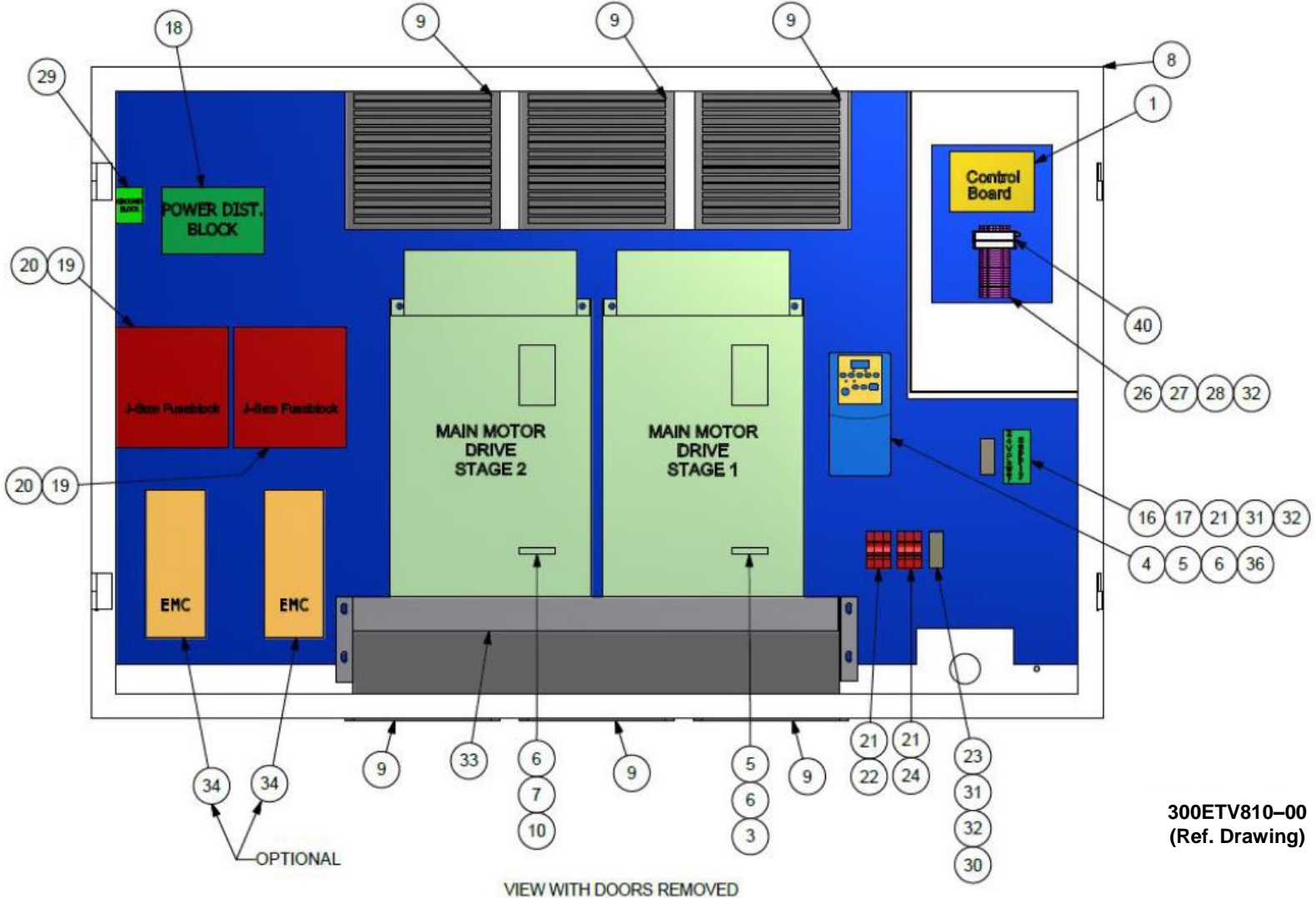
317VST810-A
(Ref. Drawing)

Order by Part Number and Description. Reference Numbers are for your convenience only.

ENCLOSURE

Ref. No.	Name Of Part	B/M Qty.	301VST4017, 308VST4013
			305VST4023, 306VST4023 Part No.
1	POST	1	CC1010212
2	FRAME.....	1	CC1010213
3	DOOR	2	CC1010214
4	DOOR	2	CC1010215
5	DOOR	2	CC1010216
6	DOOR	2	CC1010217
7	POST	1	CC1010219
8	BRACE.....	2	CC1010220
9	FRAME.....	1	CC1010222
10	FRAME.....	1	CC1010223
11	POST	1	CC1010224
12	POST	1	CC1010225
13	FRAME.....	3	CC1010226
14	PANEL	1	CC1010227
15	PANEL	1	CC1010228
16	PANEL	1	CC1010229
17	BAFFLE.....	1	CC1010234
18	PANEL	1	CC1010230
19	FRAME.....	4	CC1010231
20	PANEL	1	CC1010232
21	BAFFLE.....	1	CC1010233
22	COVER	4	306ETK225
23	PANEL, (AIR COOLED ONLY)	1	CC1010235
24	LATCH	19	31D68
25	NUT.....	81	50AW5
26	SCREW.....	130	75LM51
27	SEAL (IN FEET).....	150	32E12
28	SEAL (IN FEET).....	30	32E18
29	PANEL, (WATER COOLED ONLY)	1	CC1010236
30	PANEL, (WATER COOLED ONLY)	1	CC1010237
31	KEY (NOT SHOWN)	2	VP1049035
32	NUT.....	16	50AW3

**CONTROL BOX
(AIR COOLED)**



**300ETV810-00
(Ref. Drawing)**

Order by Part Number and Description. Reference Numbers are for your convenience only.

**CONTROL BOX
(AIR COOLED)**

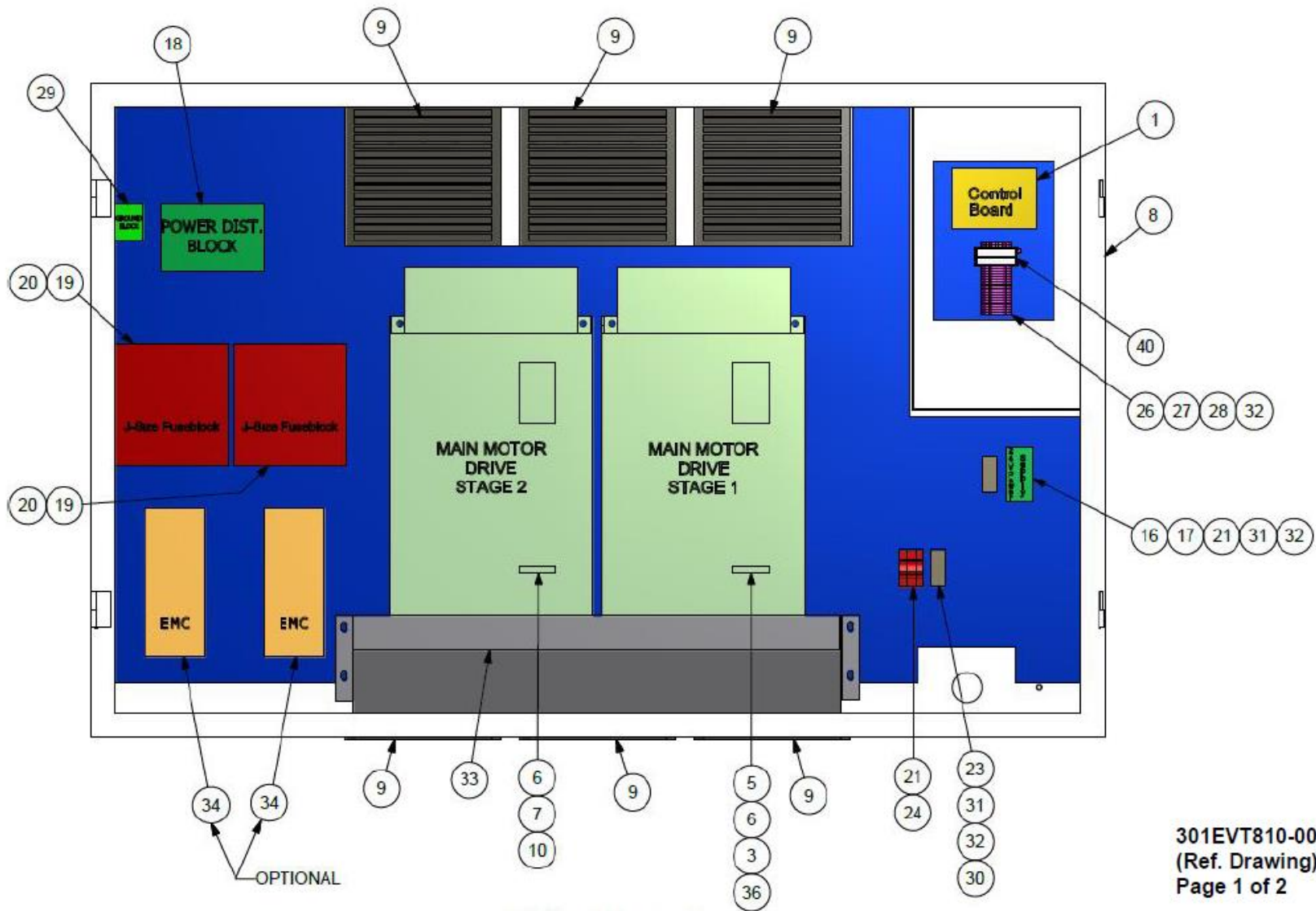
Ref. No.	Name Of Part	QTY.	110 KW	150 KW	180 KW
	CONTROL BOX ASSEMBLY (WITHOUT EMC FILTER)		312ETV1189	313ETV1189	314ETV1189
	CONTROL BOX ASSEMBLY (WITH EMC FILTER).....		300ETK1173	300ETK1173	300ETK1173
1	CONTROL ASSEMBLY	1	300ETK375	300ETK375	300ETK375
** 9	VARIABLE SPEED DRIVE (1 st STAGE).....	1	90500030C	90500030C	90500030C
4	VARIABLE SPEED DRIVE (AIR COOLED FAN)	1	90500030C	90500030C	90500030C
5	CABLE ASSEMBLY.....	2	90500149A	90500149A	90500149A
6	CABLE SPLITTER.....	3	24CA5898	24CA5898	24CA5898
7	RESISTOR	1	24CA5899	24CA5899	24CA5899
8	CONTROL BOX	1	24CA5900	24CA5900	24CA5900
* 9	FILTER	6	CC1009725	CC1009725	CC1009725
** 10	VARIABLE SPEED DRIVE (2 nd STAGE)	2	24CA5914	24CA5914	24CA5914
16	POWER SUPPLY	1	90500030C	90500030C	90500030C
17	FUSE	2	24CA2907	24CA2907	24CA2907
18	POWER DISTRIBUTION BLOCK.....	1	24CA2908	24CA2908	24CA2908
19	FUSE HOLDER	2	24CA6050	24CA6050	24CA6050
20	FUSE	6	24CA5925	24CA5926	24CA5927
21	FUSE BLOCK.....	8	24CA468	24CA468	24CA468
22	FUSE	3	24CA6854	24CA6854	24CA6854
23	RELAY	1	24CA2784	24CA2784	24CA2784
24	FUSE	3	24CA5984	24CA5984	24CA5984
26	TERMINAL BLOCK	24	24CA5985	24CA5985	24CA5985
27	TERMINAL BLOCK	1	24CA5986	24CA5986	24CA5986
28	GROUND BLOCK, DIN MOUNT	2	24CA6071	24CA6071	24CA6071
29	POWER DISTRIBUTION BLOCK.....	2	24CA5989	24CA5989	24CA5989
30	GROUND BLOCK.....	2	24CA5987	24CA5987	24CA5987
31	TERMINAL BLOCK END STOP	6	24CA5991	24CA5991	24CA5991
32	DIN RAIL	1	CC1046855	CC1046855	CC1046855
33	BAFFLE	1	CC1011559	CC1011559	CC1011559
34	EMC FILTER (ONLY APPLIES TO BOX WITH EMC FILTER)	2	24CA5933	24CA5933	24CA5933
36	PLUG KIT	1	251167531	251167531	251167531

* For Replacement Element, order Part Number 24CA5929.

** For VFD cooling fan replacement kit for VFD part number 90500030 and 90500031, order kit Part Number 24CA7613.

NOTE: For AirSmart Communication Module Kit See Part Number 300ETK6028. Refer to page 66

**CONTROL BOX
(WATER COOLED)**



13-17-501 Page 45

301EVT810-00
(Ref. Drawing)
Page 1 of 2

Order by Part Number and Description. Reference Numbers are for your convenience only.

**CONTROL BOX
(WATER COOLED)**

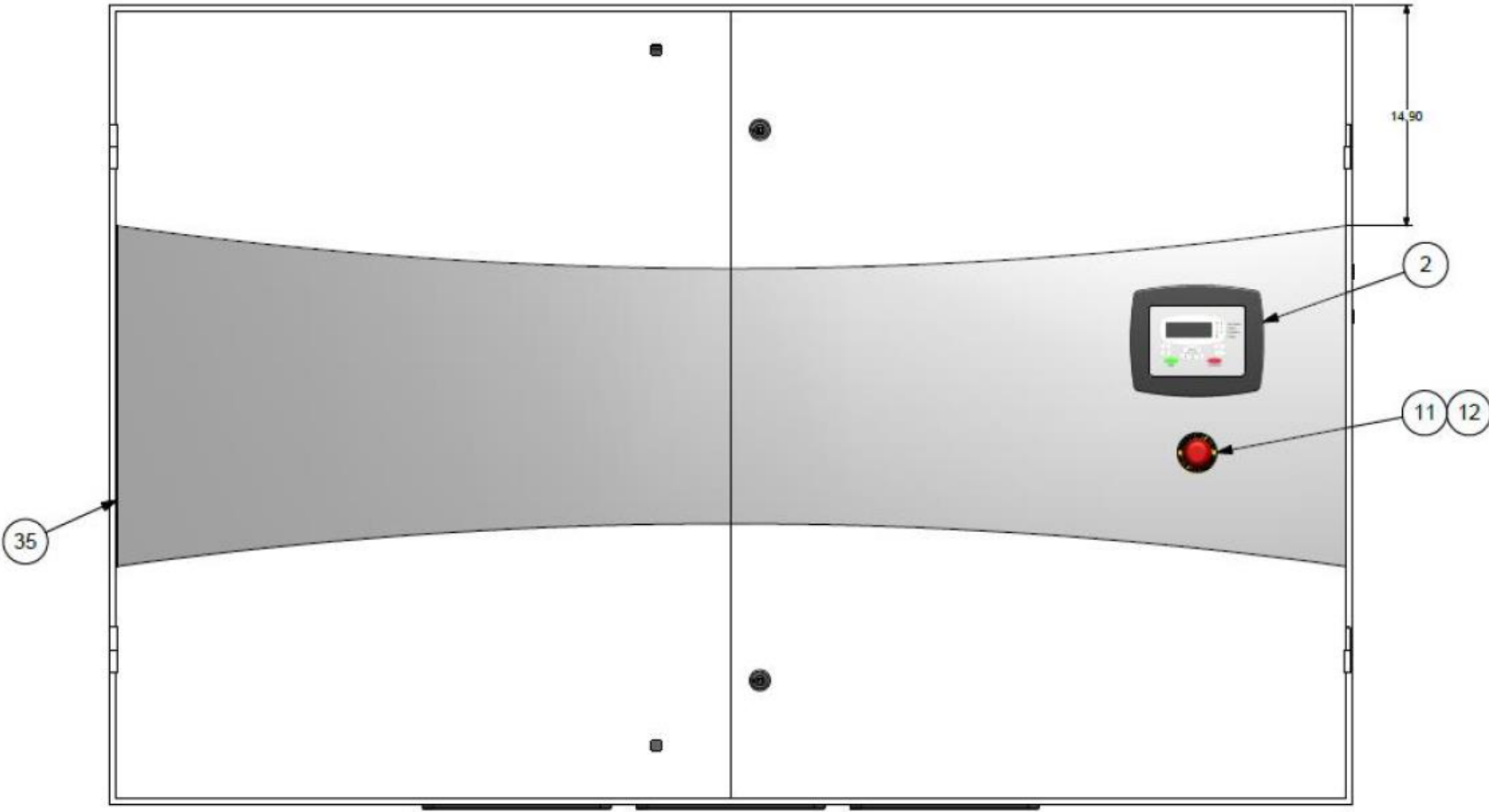
Ref. No.	Name Of Part	QTY.	110 KW	150 KW	180 KW
1	CONTROL ASSEMBLY	1	300ETK1173	300ETK1173	300ETK117
2	AIRSMART CONTROLLER'S DISPLAY MODULE	1	300ETK375	300ETK375	300ETK375
** 3	VARIABLE SPEED DRIVE (1 ST STAGE)	1	90500030C	90500031E	90500032C
5	CABLE ASSEMBLY	1	24CA5898	24CA5898	24CA5898
6	SPLITTER CABLE.....	2	24CA5899	24CA5899	24CA5899
7	RESISTOR	1	24CA5900	24CA5900	24CA5900
8	BOX CONTROL	1	CC1009725	CC1009725	CC1009725
9	FILTER.....	6	24CA5914	24CA5914	24CA5914
10	VARIABLE SPEED DRIVE (2 ND STAGE)	1	90500030D	90500031F	90500032D
11	RED ALUMINUM,CHROME E-STOP-.....	1	24CA2907	24CA2907	24CA2907
12	CONTACT BLOCK	1	24CA2908	24CA2908	24CA2908
16	POWER SUPPLY	1	24CA6050	24CA6050	24CA6050
17	FUSE	2	24CA4088	24CA4088	24CA4088
18	POWER DISTRIBUTION	1	24CA5928	24CA5928	24CA5928
19	FUSE HOLDER.....	2	24CA5903	24CA5903	24CA5923
20	FUSE	6	24CA5925	24CA5926	24CA5927
21	FUSE BLOCK.....	5	24CA5910	24CA5910	24CA5910
23	RELAY	1	24CA6854	24CA6854	24CA6854
24	FUSE	3	24CA2784	24CA2784	24CA2784
26	TERMINALBLOCK.	24	24CA5984	24CA5984	24CA5984
27	TERMINAL BLOCK	1	24CA5985	24CA5985	24CA5985
28	GROUND BLOCK DIN MOUNT	2	24CA5986	24CA5986	24CA5986
29	POWER DISTRIBUTION BLOCK.....	2	24CA6071	24CA6071	24CA6071
30	GROUND BLOCK	2	24CA5989	24CA5989	24CA5989
31	TERMINAL BLOCK	6	24CA5987	24CA5987	24CA5987
32	DIN RAIL	1	24CA5991	24CA5991	24CA5991
33	BAFFLE.....	1	CC1046855	CC1046855	CC1046861
35	DECAL-VST180 & 260 "GREY" CONTROL BOX.....	1	CC1011559	CC1011559	CC1011559
36	PLUG KIT	1	24CA5933	24CA5933	24CA5933
40	ICONN MODEM	1	251167531	251167531	251167531

* For Replacement Element, order Part Number 24CA5929.

** For VFD cooling fan replacement kit for VFD part number 90500030 and 90500031, order kit Part Number 24CA7613.

NOTE: For AirSmart Communication Module Kit See Part Number 300ETK6028. Refer to page 66

CONTROL BOX LAYOUT



13-17-501 Page 47

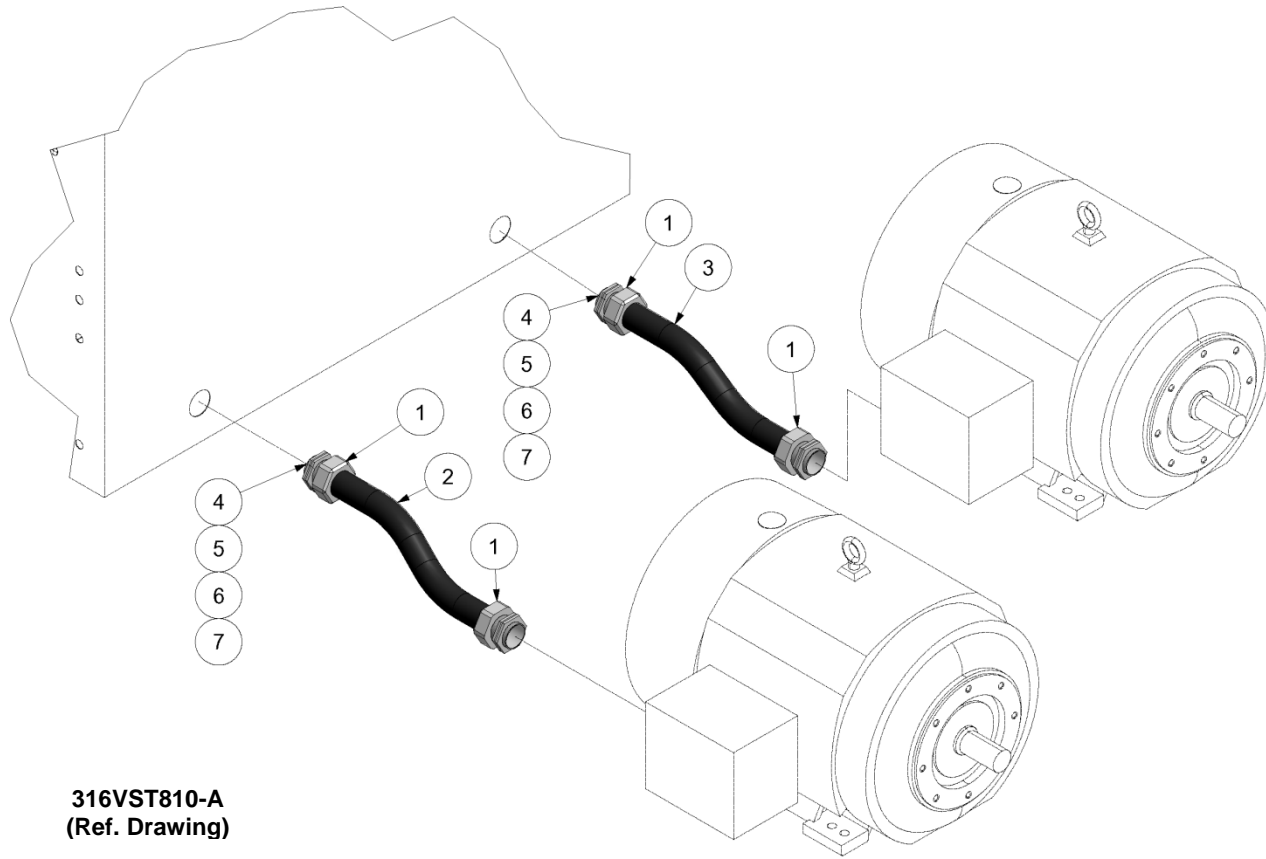
301ETV810-00
(Ref. Drawing)
Page 2 of 2

Order by Part Number and Description. Reference Numbers are for your convenience only

CONTROL BOX LAYOUT

Ref. No.	Name Of Part	QTY.	B/M: 312 thru 317ETV1189
1	AIRSMART CONTROLLER, FULL VERSION	1	300ETK1173
2	AIRSMART CONTROLLER'S DISPLAY MODULE	1	300ETK375
8	BOX CONTROL	1	CC1009725
9	BLACK GRILLE FILTER (ELECTRICAL)	6	24CA5914
11	RED ALUMINUM,CHROME E-STOP	1	24CA2907
12	CONTACT BLOCK.....	1	24CA2908
16	POWER SUPPLY	1	24CA6050
17	FUSE.....	2	24CA4088
18	POWER DISTRIBUTION BLOCK 3P0LE	1	24CA5928
19	FUSE HOLDER 3 POLE	2	24CA5903
20	FUSE,CLASS J 150A.....	6	24CA5925
21	FUSE BLOCK.....	8	24CA5910
22	FUSE	3	24CA468
23	CONTACTOR.....	1	24CA6854
24	FUSE.....	3	24CA2784
26	TERMINAL BLOCK.....	24	24CA5984
27	TERMINAL BLOCK.....	1	24CA5985
28	GROUND BLOCK	2	24CA5986
29	GROUND BLOCK	2	24CA6071
30	GROUND BLOCK	2	24CA5989
31	TERMINAL BLOCK.....	6	24CA5987
32	DIN RAIL	1	24CA5991
33	BAFFLE	1	CC1046855
35	DECAL-VST180 & 260 "GREY" CONTROL BOX	1	CC1011559

MAIN MOTOR WIRING



316VST810-A
(Ref. Drawing)

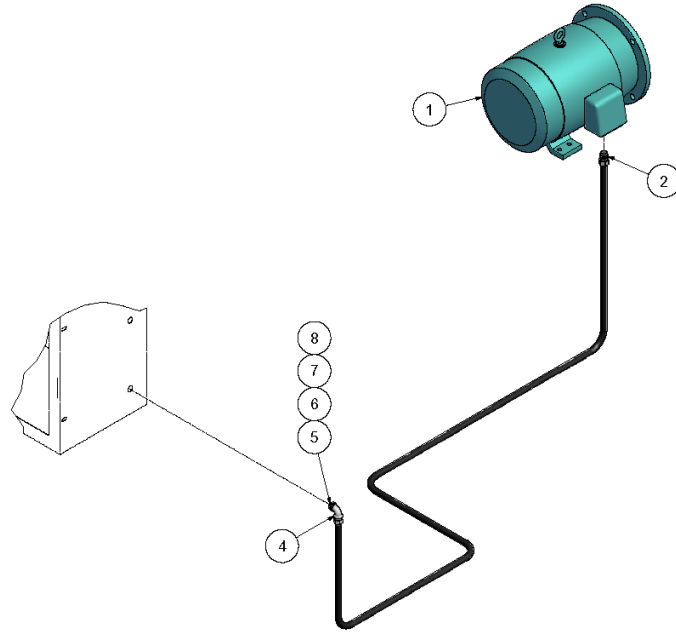
Order by Part Number and Description. Reference Numbers are for your convenience only.

MAIN MOTOR WIRING

Ref. No.	Name Of Part	QTY.	B/M: 305VST4007		B/M: 306VST4007	
			150 kW Part No.	QTY.	110 kW Part No.	QTY.
1	FITTING-CONDUIT	4	2009337	4	2009337	
2	CONDUIT (IN INCHES).....	23	2009412	23	2009412	
3	CONDUIT (IN INCHES).....	23	2009412	23	2009412	
4	WIRE (IN FEET).....	30	2009422	30	2009522	
5	WIRE (IN FEET).....	11	97J76	11	97J77	
6	TERMINAL LUG.....	6	24A500	6	24A520	
7	TERMINAL LUG.....	4	24CA1444	2	24CA518	

Ref. No.	Name Of Part	B/M: 302VST4007	
		180 kW Part No.	QTY.
1	FITTING-CONDUIT	2009337	4
2	CONDUIT (IN INCHES).....	2009412	23
3	CONDUIT (IN INCHES).....	2009412	23
4	WIRE (IN FEET)	2009410	66
5	WIRE (IN FEET)	97J77	11
6	TERMINAL LUG	24A499	12
7	TERMINAL LUG	24CA518	2

Order by Part Number and Description. Reference Numbers are for your convenience only.

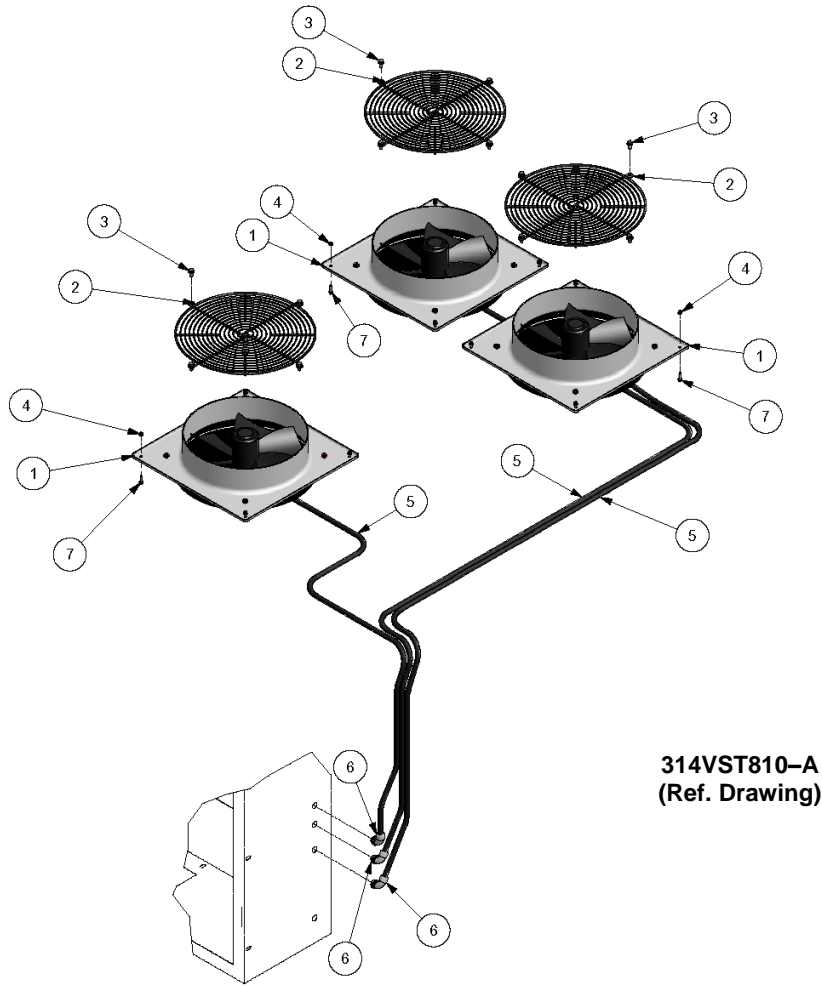


315VST810-A
(Ref. Drawing)

**COOLER FAN MOTOR
(AIR COOLED ONLY)**

Ref. No.	Name Of Part	Qty.	301VST4007 & B/M 301ETV4007 Part No.
1	MOTOR (460 VOLT)	1	90500116
2	CONDUIT FITTING	1	24A378
3	CONDUIT (IN FEET)	20	24A402
4	CONDUIT FITTING	1	24A380
5	WIRE (IN FEET)	75	2009800
6	WIRE (IN FEET)	25	2009989
7	CONNECTOR-NYLON	6	24CA2068
8	TERMINAL LUG	2	24A298

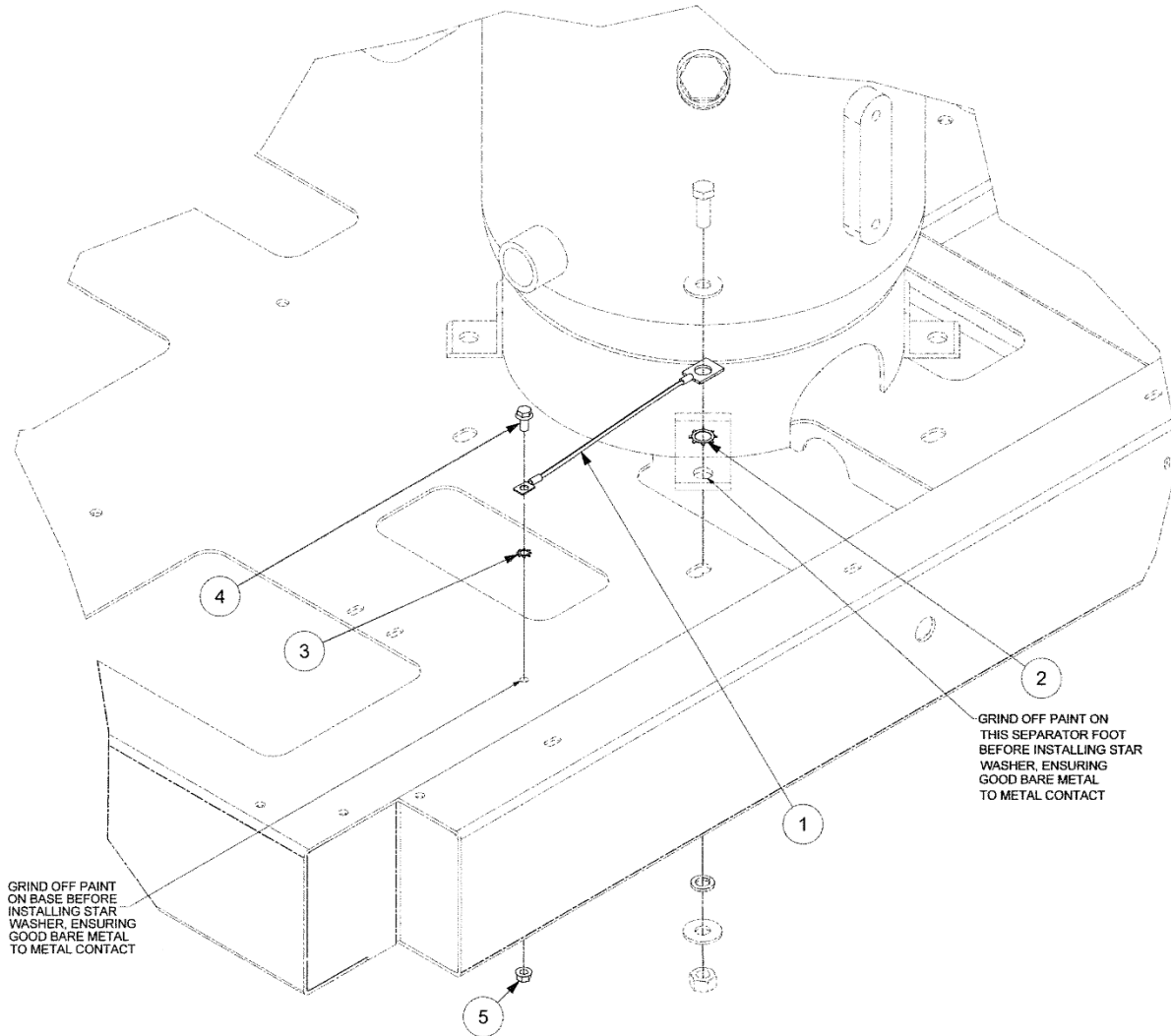
Order by Part Number and Description. Reference Numbers are for your convenience only.



VENT FANS

Ref. No.	Name Of Part	Qty.	Part No.
			300VST4007 & B/M 300ETV4007
1	FAN VENT (460 VOLT).....	3	VP1128045
2	GUARD.....	3	301ETK393
3	SCREW.....	12	75LM51
4	NUT.....	12	50AW3
5	WIRE (IN FEET).....	60	97J83
6	FITTING-ELECTRICAL.....	3	24CA4196
7	SCREW.....	12	75LM53

ELECTRICAL GROUNDING KIT



323VST810-A
(Ref. Drawing)

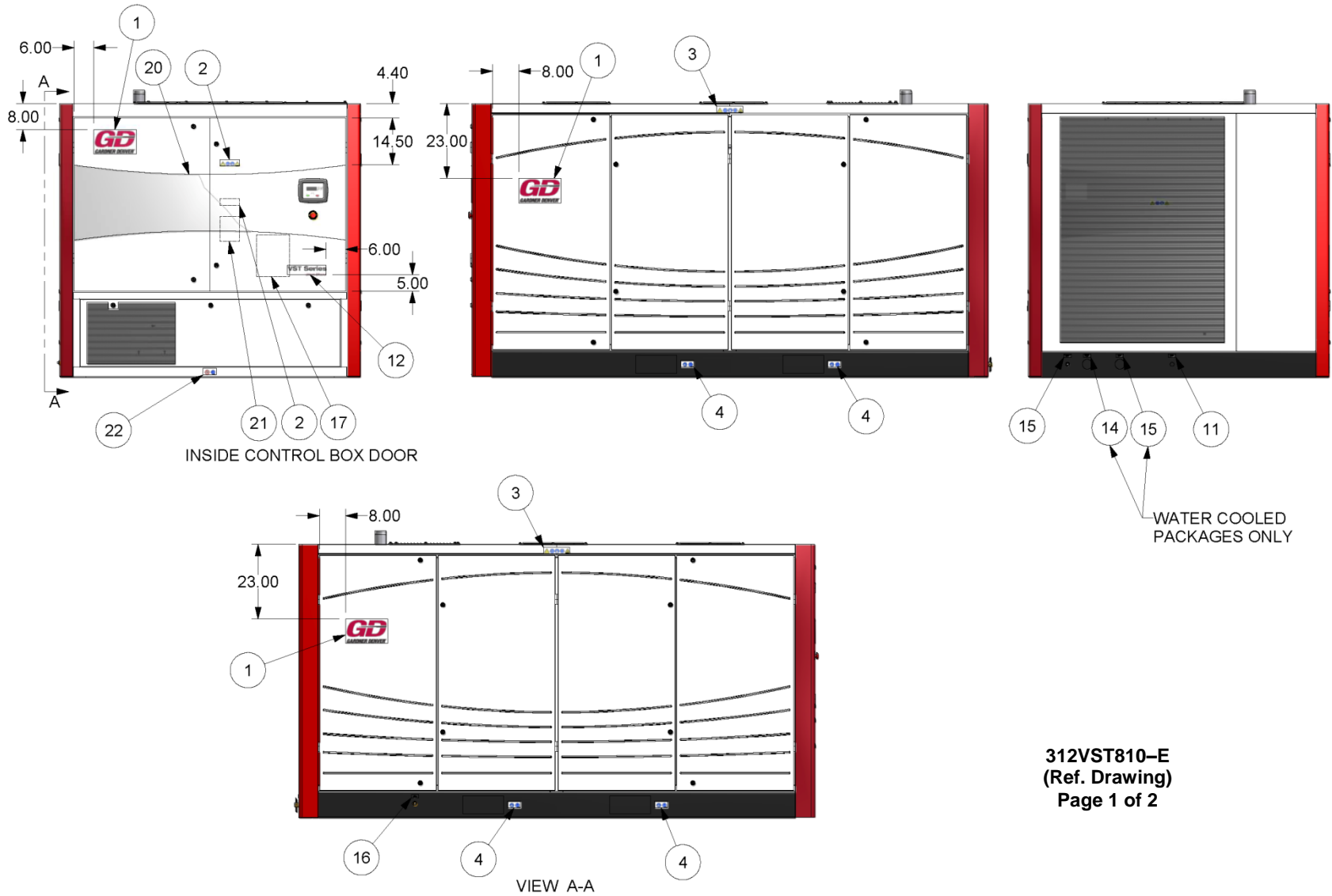
Order by Part Number and Description. Reference Numbers are for your convenience only.

ELECTRICAL GROUNDING KIT

Ref.No.	Name of Part	Qty.	B/M: 306ETW6005 Part No.
1	ELECTRICAL GROUP (GROUNDING WIRE & LUGS)	1	306ETW4007
2	LOCK WASHER	1	95H8
3	LOCK WASHER	1	95H3
4	SCREW	1	75LM51
5	NUT	1	50AW5

All Parts Included In Field Repair Kit Part Number 307ETW6005.
Refer To Page 64.

**DECAL LAYOUT
(PACKAGE EXTERIOR)**



**312VST810-E
(Ref. Drawing)
Page 1 of 2**

Order by Part Number and Description. Reference Numbers are for your convenience only.

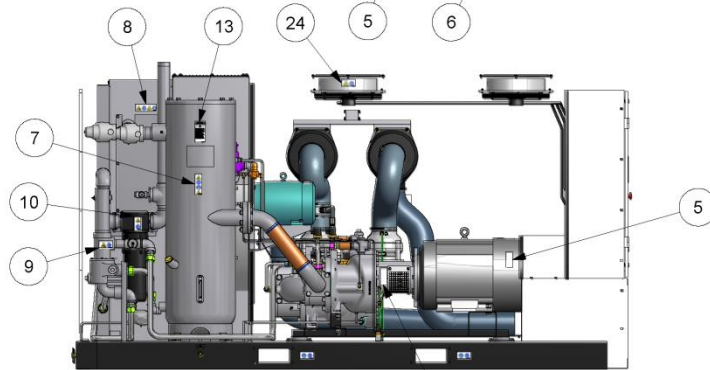
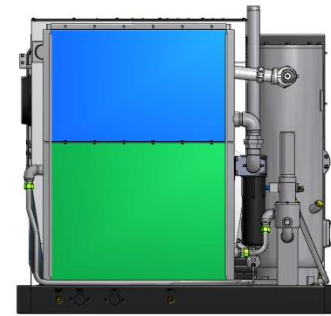
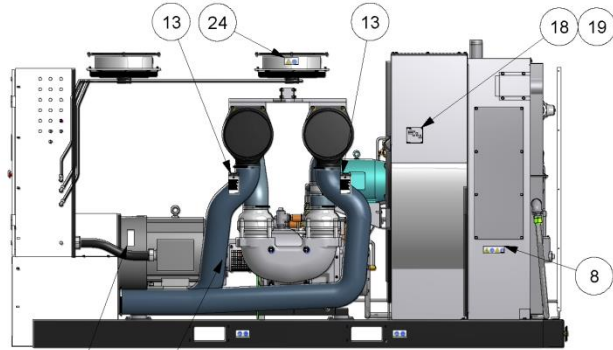
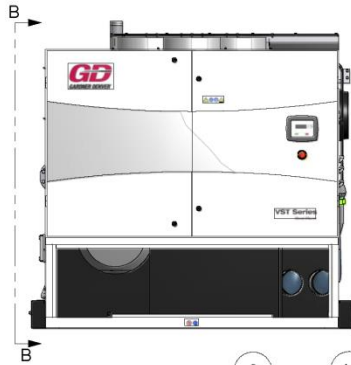
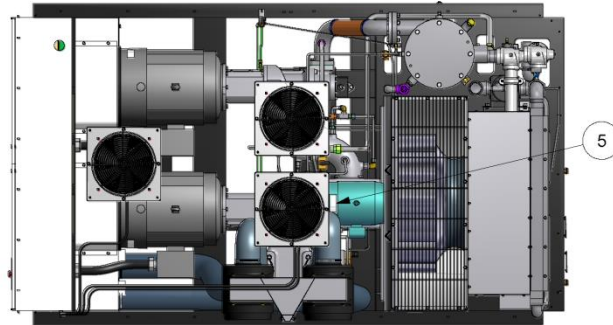
**DECAL LAYOUT
(PACKAGE EXTERIOR)**

**B/M: 300VST4011
304 thru 307VST4011**

Ref.No.	Name of Part	Qty.	Part No.
1	DECAL-GARDNER DENVER, 26.0"X7.61", BLK	1	TEN000787
2	DECAL, ISO WARNING-Control Box	2	VP1009371
3	DECAL, ISO WARNING-Sides Above Doors	2	VP1009372
4	DECAL, ISO WARNING-Fork Pocket.....	4	VP1009373
5	DECAL, ISO WARNING-Motor (use CC1010403).....	3	VP1009374
6	DECAL, ISO WARNING-Coupling Housing.....	2	VP1009375
7	DECAL, ISO WARNING-PRESSURE & HOT SURFACE	1	VP1009376
8	DECAL, ISO WARNING-Fan/Auto Start.....	2	VP1009377
9	DECAL, ISO WARNING-COMPRESSED GAS	1	VP1009379
10	DECAL, ISO WARNING-Moisture Trap.....	1	VP1009380
11	PLATE-DATA,CONDENSATE DRAIN.....	1	VP1009381
12	DECAL, VST 110.....	1	TEN005187
12	DECAL, VST 150.....	1	TEN005188
12	DECAL, VST 180.....	1	TEN005189
13	DECAL-NOTICE (Use Genuine GD Parts).....	3	CC1009474
15	PLATE-DATA,COOL WATER OUT	1	202EWD45
16	PLATE-DATA (OIL DRAIN)	1	300EHG454
17	POCKET	1	VP1009797
18	PLATE-NAME	1	208EAQ496
19	RIVET	4	70E13
22	DECAL, ISO WARNING-DO NOT LIFT.....	1	VP1032920
24	DECAL, ISO WARNING-Rotating Fans.....	2	VP1009640
25	DECAL,GROUP DECAL SHEET.....	1	CC1010403

* For Replacement Decals, order Part Number CC1010403 Decal Group Sheet.

**DECAL LAYOUT
(PACKAGE INTERIOR)**



VIEW B-B

**312VST810-E
(Ref. Drawing)
Page 2 of 2**

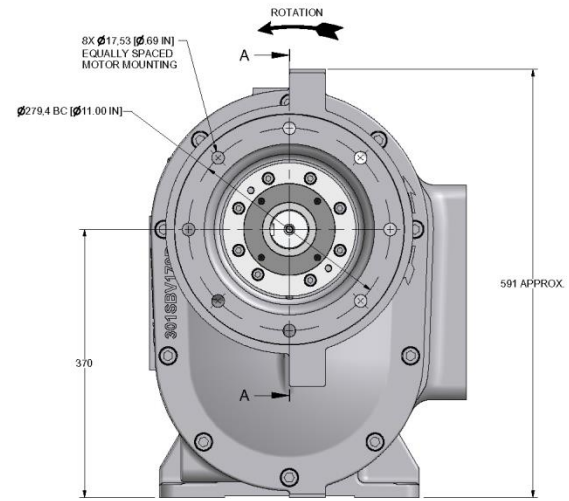
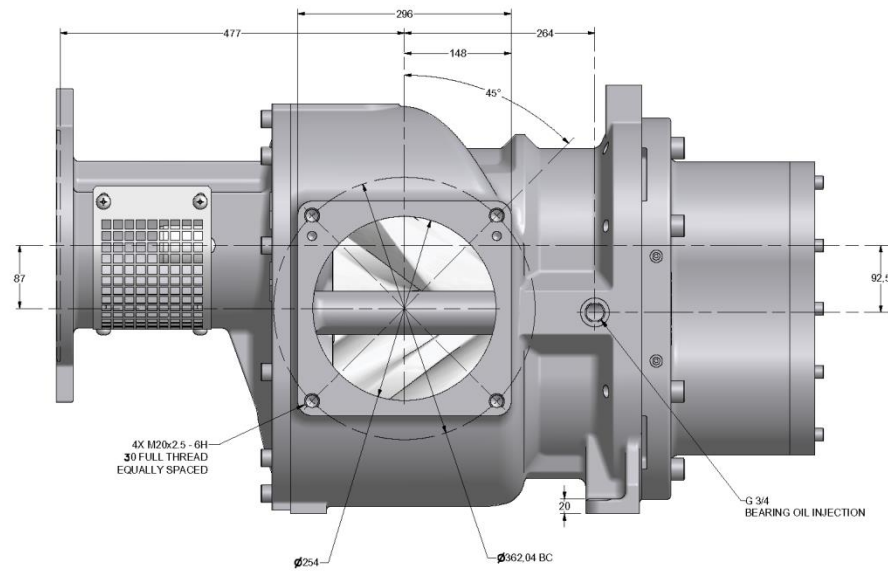
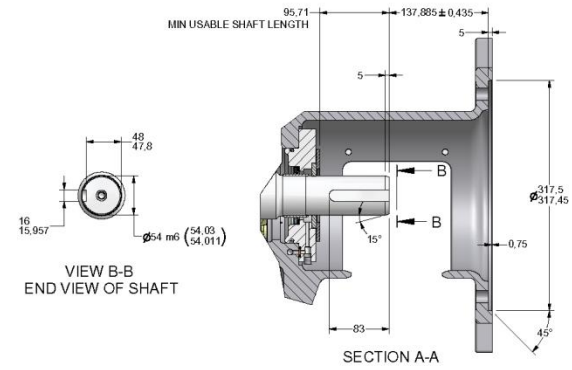
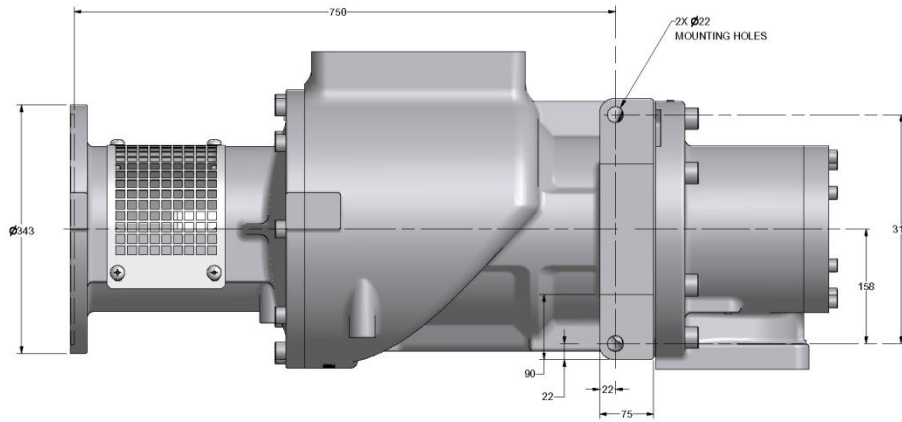
Order by Part Number and Description. Reference Numbers are for your convenience only.

**DECAL LAYOUT
(PACKAGE INTERIOR)**

Ref.No.	Name of Part	Qty.	B/M: 300VST4011 Part No.
1	DECAL-GARDNER DENVER, 26.0"X7.61", BLK	1	TEN000787
2	DECAL, ISO WARNING-Control Box	2	VP1009371
3	DECAL, ISO WARNING-Sides Above Doors	2	VP1009372
4	DECAL, ISO WARNING-Fork Pocket.....	4	VP1009373
5	DECAL, ISO WARNING-Motor (use CC1010403).....	3	VP1009374
6	DECAL, ISO WARNING-Coupling Housing.....	2	VP1009375
7	DECAL, ISO WARNING-PRESSURE & HOT SURFACE	1	VP1009376
8	DECAL, ISO WARNING-Fan/Auto Start.....	2	VP1009377
9	DECAL, ISO WARNING-COMPRESSED GAS	1	VP1009379
10	DECAL, ISO WARNING-Moisture Trap.....	1	VP1009380
11	PLATE-DATA,CONDENSATE DRAIN.....	1	VP1009381
12	DECAL, VST 110.....	1	TEN005187
12	DECAL, VST 150.....	1	TEN005188
12	DECAL, VST 180.....	1	TEN005189
13	DECAL-NOTICE (Use Genuine GD Parts).....	3	CC1009474
15	PLATE-DATA,COOL WATER OUT	1	202EWD45
16	PLATE-DATA (OIL DRAIN)	1	300EHG454
17	POCKET	1	VP1009797
18	PLATE-NAME.....	1	208EAQ496
19	RIVET	4	70E13
22	DECAL, ISO WARNING-DO NOT LIFT.....	1	VP1032920
24	DECAL, ISO WARNING-Rotating Fans.....	2	VP1009640
25	DECAL,GROUP DECAL SHEET.....	1	CC1010403

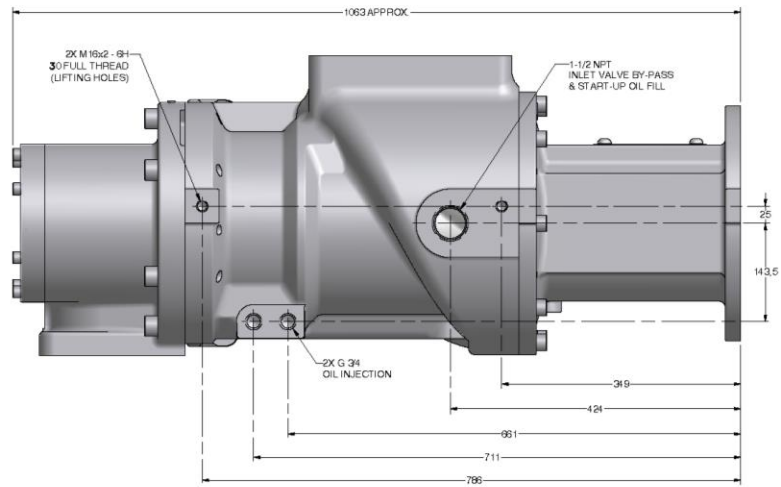
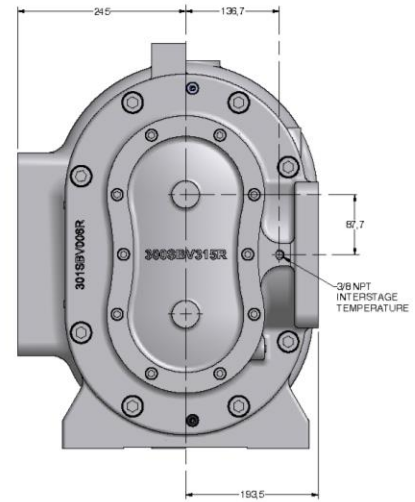
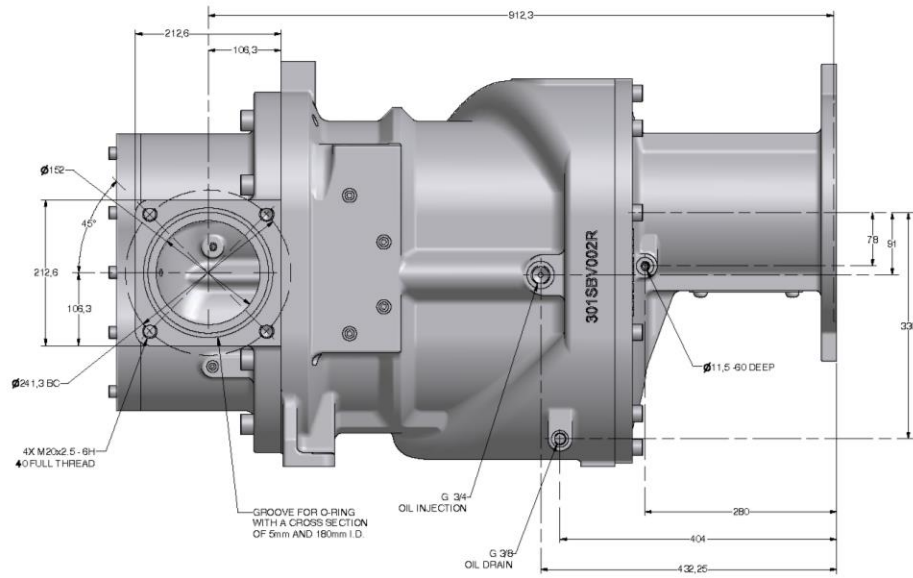
* For Replacement Decals, order Part Number CC1010403 Decal Group Sheet.

OUTLINE 1ST STAGE



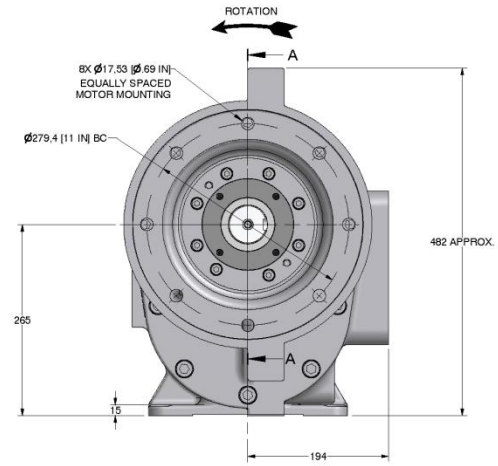
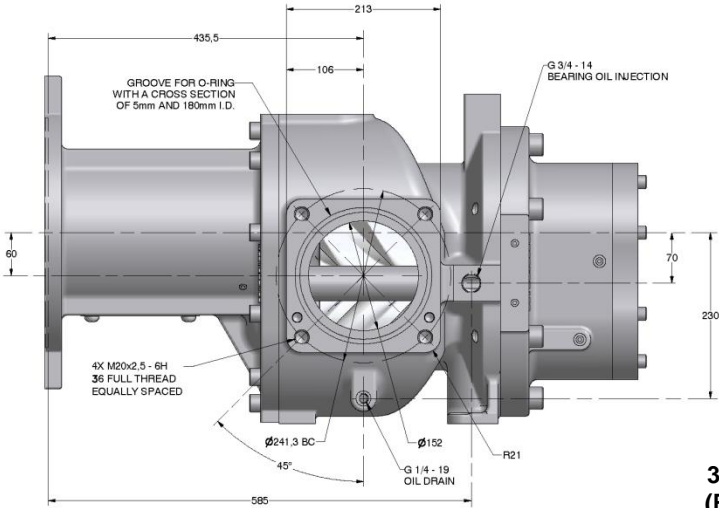
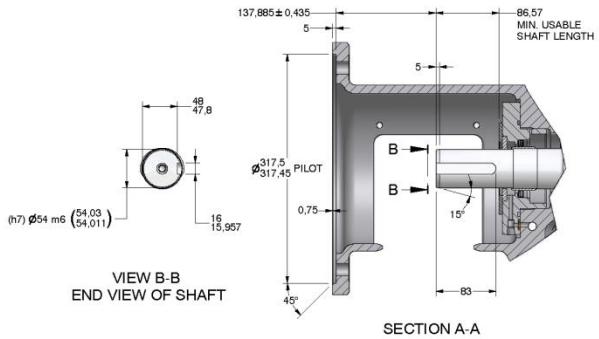
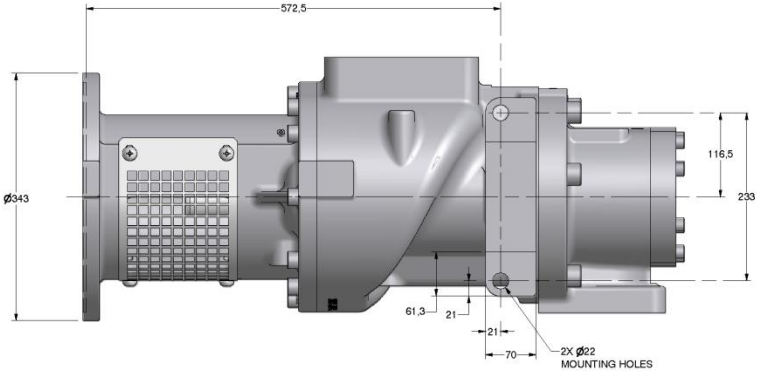
301SBV800-E
 (Ref. Drawing)
 Page 1 of 2

OUTLINE 1st STAGE



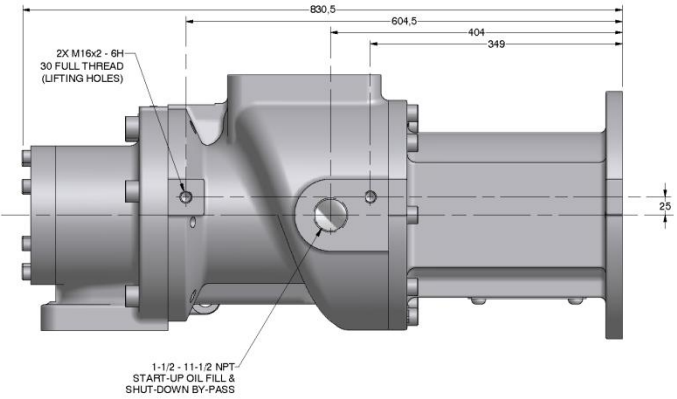
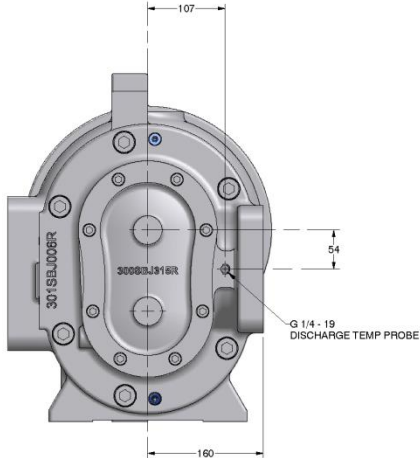
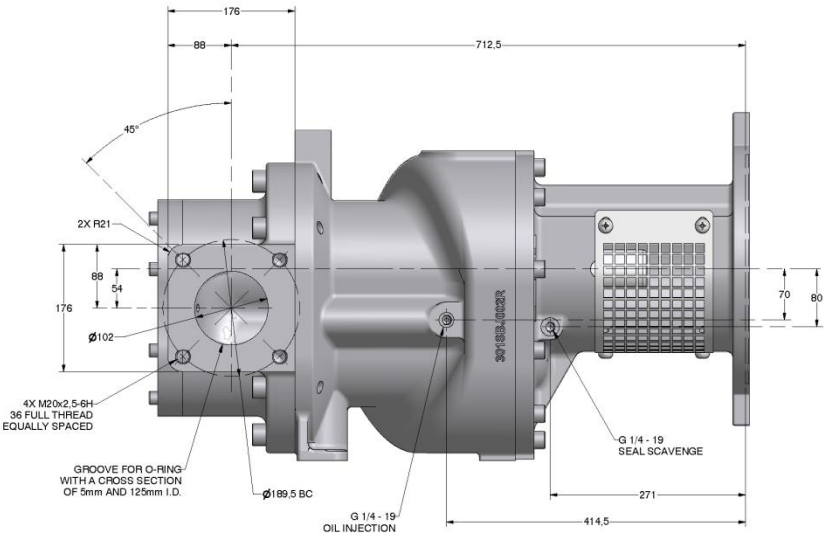
301SBV800-E
(Ref. Drawing)
Page 2 of 2

OUTLINE 2nd STAGE



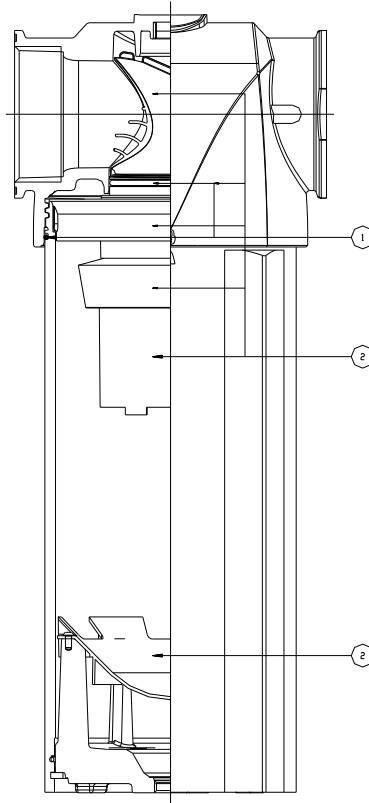
302SBJ800-A
 (Ref. Drawing)
 Page 1 of 2

OUTLINE 2nd STAGE



**302SBJ800-A
(Ref. Drawing)
Page 2 of 2**

Order by Part Number and Description. Reference Numbers are for your convenience only



**MOISTURE SEPARATOR WITH TRAP
(VP1021707)**

Ref. No.	Name of Part	Qty.	Part No.
	SEPARATOR (LESS TRAP)	1	2118547
1	O-RING	1	2118586
2	INTERNAL KIT	1	2118590
*	TRAP (EXTERNAL).....	1	VP1010053
*	BRACKET	1	2118517
*	ISOLATION VALVE	1	2118388

* Not shown

REPAIR KITS

Your Gardner Denver rotary screw compressor is designed and manufactured for many years of reliable operation. All components are engineered to exacting specifications, which will function together as a system to provide maximum efficiency. To insure the continuing integrity of compressor operation, use only original quality genuine Gardner Denver replacement parts and accessories.

Name of Part	Qty.	Part No.
ROUTINE MAINTENANCE KIT		
		306VST6003
ELEMENT, AIR FILTER.....	4	5L356
ELEMENT, OIL FILTER.....	3	2118345
OIL SEPARATOR KIT		
		300ETV6013
OIL SEPARATOR.....	2	300EBQ035
O-RING.....	1	25BC694
O-RING LUBRICANT.....	1	2116755
PNEUMATIC CONTROLS AND GAUGES		
		302VST6013
CHECK VALVE.....	2	90AR1135
CHECK VALVE.....	1	90AR1136
CHECK VALVE.....	1	90AR1138
PRESSURE REGULATOR.....	1	TEN000580
STRAINER.....	1	82E46
ELECTRICAL CONTROL GROUP		
		300VST6013
CONTROL VALVE.....	4	90AR1148
SOLENOID VALVE.....	1	91B255
THERMISTOR.....	5	VP1018671
PRESSURE TRANSDUCER.....	5	88H365
VACUUM SWITCH.....	1	88H195
THERMISTOR CABLE (30 FT).....	4	VP1018672
THERMISTOR CABLE (8 FT).....	1	VP1018675
NOZZLE REPAIR KIT		
		308VST6003
LOCTITE.....	1	25BC669
ADAPTOR.....	2	300ETV170
ADAPTOR.....	2	301ETK170
NOZZLE.....	2	52C8
NOZZLE.....	2	52C9
GASKET.....	2	25BC861
GASKET.....	2	25BC876
PLUG.....	1	64A27G
NOZZLE.....	1	52C12
ADAPTOR.....	1	301ETV170
GASKET.....	1	25BC862

Name of Part	Qty.	Part No.
MOTOR BEARING GREASE		
400 GRAM CARTRIDGE	1	28H311
KILOGRAM CAN	1	28H312
25 KILOGRAM PAIL	1	28H313
 LUBRICANT (AEON 9000SP) – STANDARD		
5-GALLON PAIL	1	28H109
55-GALLON DRUM	1	28H103
 LUBRICANT (AEON 9000TH)		
5-GALLON PAIL	1	28H286
55-GALLON DRUM	1	28H270
 LUBRICANT (AEON 6000FG)		
5-GALLON PAIL	1	28H99
55-GALLON DRUM	1	28H100
 LUBRICANT (AEON 6000FG-68)		
5-GALLON PAIL	1	28H314
55-GALLON DRUM	1	28H315
 LUBRICANT (AEON BIO)		
5-GALLON PAIL	1	28H102
55-GALLON DRUM	1	28H103
 TOUCH-UP PAINT		
1 QUART CAN (WHITE)	1	28H83
1 GALLON CAN (WHITE)	1	28H84
5 GALLON PAIL (WHITE)	1	28H76
1 QUART CAN (RED)	1	28H323
1 GALLON CAN (RED)	1	28H324
5 GALLON PAIL (RED)	1	28H325
 WATER TEMPERATURE REGULATOR (OPTIONAL)		90AR1117
 WATER SHUT-OFF VALVE (OPTIONAL)		90AR1151
 OIL SEAL KIT (1st STAGE)		300SBV6029
SHAFT SEAL	1	89850609
O-RING	1	25BC800
INNER RING	1	89850729
O-RING	1	25BC844
SEAL	1	300SBJ316
GASKET ELIMINATOR	1	25BC632
ANTI-SEIZE	1	25BC850
COUPLING INSTALLATION SHEET	1	MP167

REPAIR KITS (Continued)

Name of Part	Qty.	Part No.
OIL SEAL KIT (2nd STAGE)		300SBJ6029
SHAFT SEAL	1	89850609
O-RING	1	25BC819
INNER RING	1	89850729
O-RING	1	25BC844
SEAL	1	300SBJ316
GASKET ELIMINATOR	1	25BC632
ANTI-SEIZE	1	25BC850
COUPLING INSTALLATION SHEET	1	MP167
COUPLING INSTALLATION & REMOVAL TOOL KIT		301VST6031
COUPLING INSTALLATION TOOL.....	1	CC1026209
PULLER	1	90500151
COUPLING INSTALLATION SHEET	1	MP167
SEAL INSTALLATION & REMOVAL TOOL KIT		300ETV6031
COUPLING INSTALLATION TOOL.....	1	CC1026209
PULLER	1	90500151
WEAR SLEEVE PUSHER TOOL	1	301SBV074
TOOL	1	300SBV074
GUIDE.....	1	300SBV450
PULLER ASSEMBLY.....	1	20500162
COUPLING INSTALLATION SHEET	1	MP167
SEPARATOR GROUNDING, FIELD REPAIR KIT		307ETW6005
ELECTRICAL GROUP (GROUNDING WIRE & LUGS).....	1	306ETW4007
LOCK WASHER	1	95H8
LOCK WASHER	1	95H3
SCREW.....	1	75LM51
NUT.....	1	50AW5
AIRSMART COMMUNICATION MODULE KIT		300ETK6028
ELECTRICAL FITTING.....		24CA615
PIPE COUPLING		64EB368
PRESSURE TRANSDUCER		VP1011577
PLUG		64AC2
AIRSMART CONTROL.....		301ETK1173
INDUSTRIAL ETHERNET PANEL-CONNECTOR.....		VP1023309
COVER-BAYONET-STYLE DUST COVER & STRAP.....		VP1023310
CABLE		97J93

INLET VALVE SEAL KIT		VP1036374
GASKET.....	1	VP1033984
O-RING	1	VP1033988
O-RING	1	VP1033989
O-RING	1	VP1033990
O-RING	1	VP1033992
O-RING	1	VP1033993
RETAINER	1	VP1033997

INLET VALVE REPAIR KIT		VP1036375
PISTON.....	1	VP1033983
PLATE.....	1	VP1034812
PIN	1	VP1034813
VALVE SPRING.....	1	VP1034814
BALL BEARING	1	VP1034815

10 YEAR WARRANTY KIT

10 Year Warranty Kit Contains The Following:

WARRANTY KIT		300ETV6032
ELEMENT.....	4	2118345
AIR FILTER ELEMENT	4	5L356
OIL SEPARATOR KIT	1	300ETK6013
BOTTLE, AEON OIL SAMPLE KIT, ONE EACH	2	VP1074048
FAN FILTERS, 5 PACK 12x12 PAD.....	4	24CA5929

Gardner Denver®

For additional information, contact your local representative or visit:
www.contactgd.com/compressors

©2018 Gardner Denver, Inc. Printed in U.S.A.



Member



Please recycle after use.