

Supplement of Biogeosciences, 12, 5339–5352, 2015  
<http://www.biogeosciences.net/12/5339/2015/>  
doi:10.5194/bg-12-5339-2015-supplement  
© Author(s) 2015. CC Attribution 3.0 License.



*Supplement of*

## **Responses of leaf traits to climatic gradients: adaptive variation versus compositional shifts**

**T.-T. Meng et al.**

*Correspondence to:* H. Wang (wanghan\_sci@yahoo.com)

The copyright of individual parts of the supplement might differ from the CC-BY 3.0 licence.

## Supplement

Figure S1: Partial residual plots for the relationships between leaf traits and the Cramer-Prentice moisture index ( $\alpha$ ), from a GLM analysis with PFT identity included as a predictor. Each point represents a species-site combination; fitted lines for each PFT are indicated by colours.

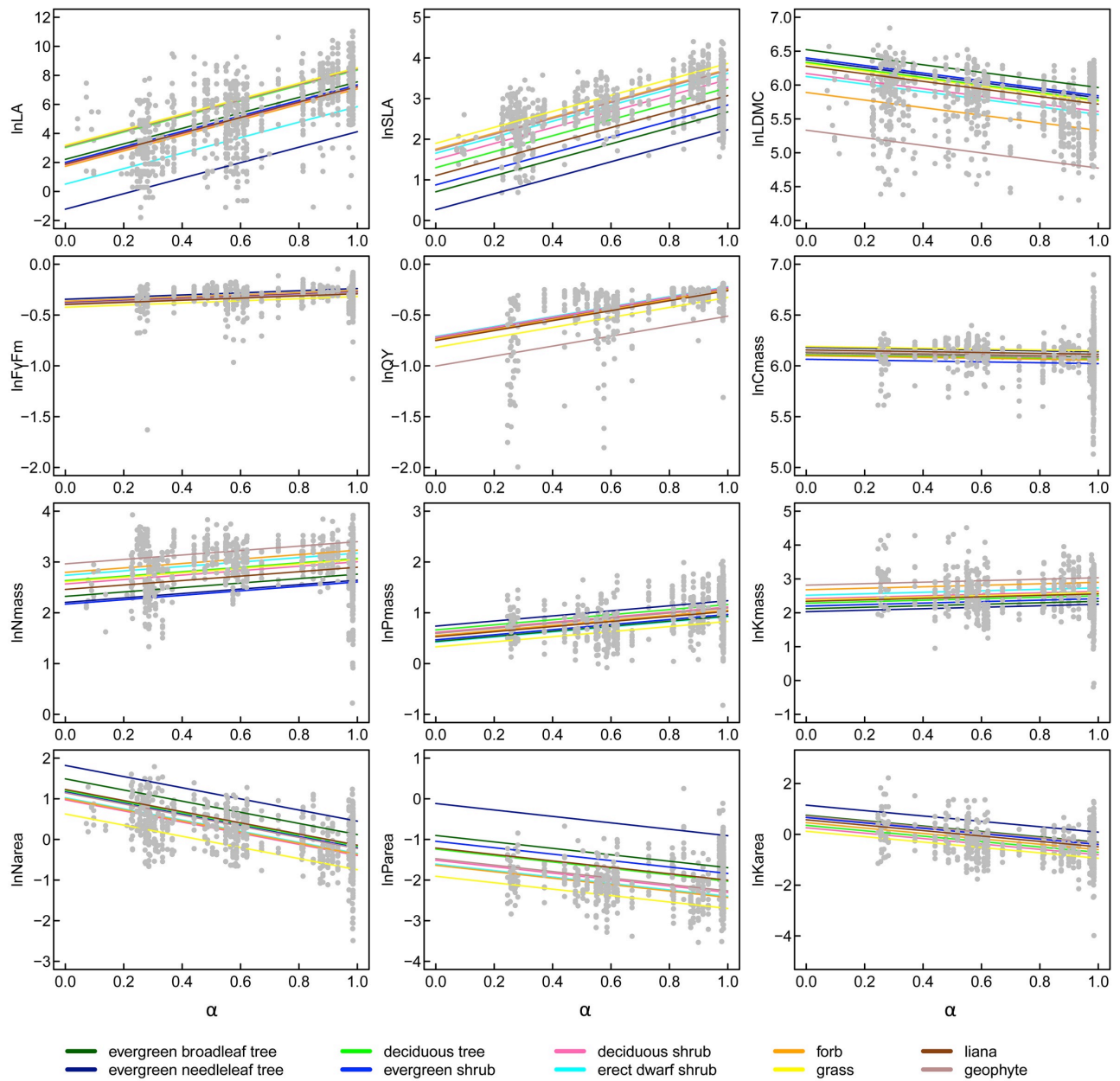


Figure S2: Partial residual plots for the relationships between leaf traits and the Cramer-Prentice moisture index ( $\alpha$ ), from a GLM analysis with PFT  $\times$  climate interactions included as predictors. Each point represents a species-site combination; fitted lines for each PFT are indicated by colours. Only significant PFT  $\times$  climate interactions ( $P < 0.01$ ) are shown.

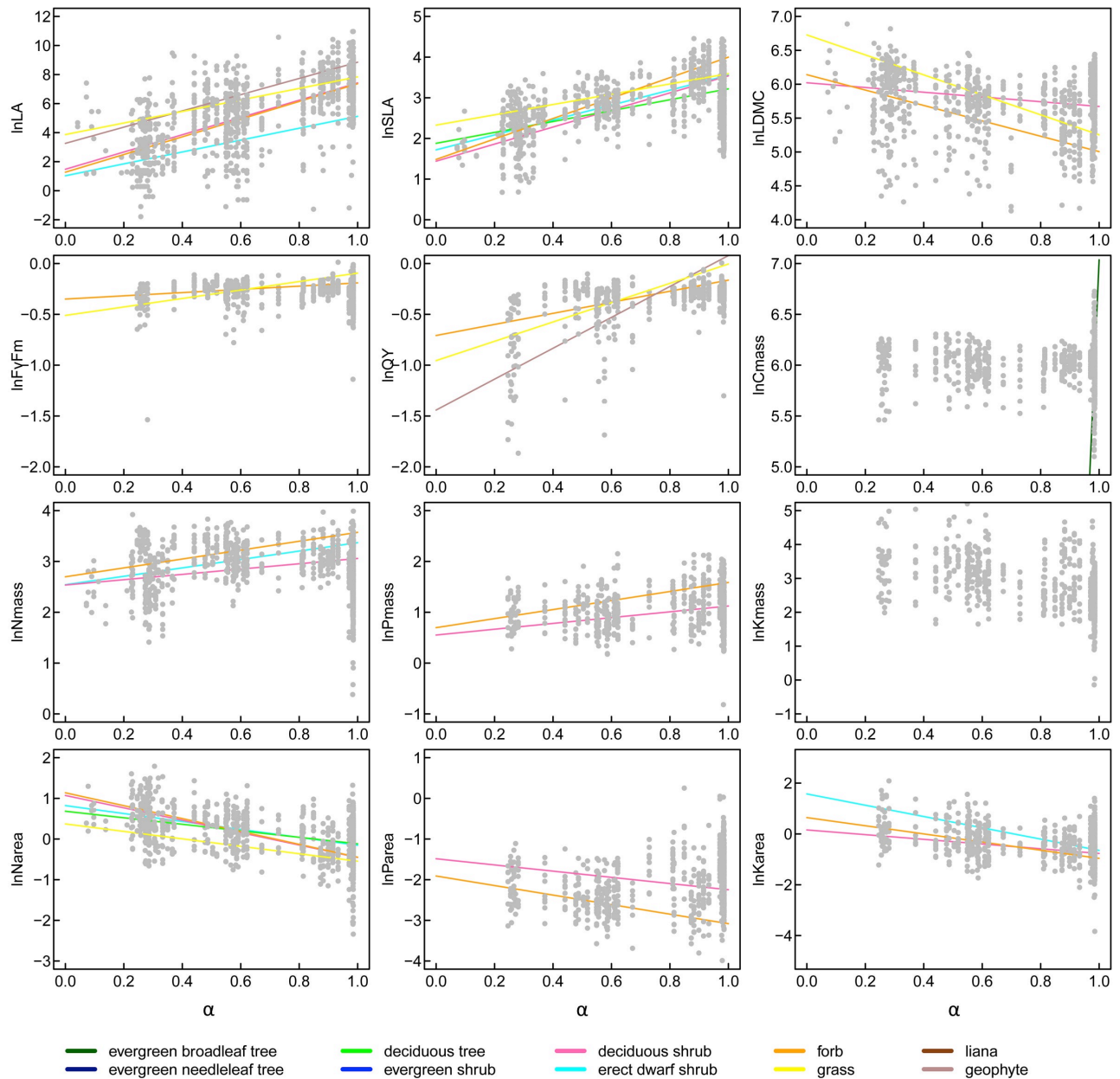


Figure S3: Partial residual plots for the relationships between leaf traits and growing degree days ( $GDD_0$ ), from a GLM analysis with PFT identity included as a predictor. Each point represents a species-site combination; fitted lines for each PFT are indicated by colours.

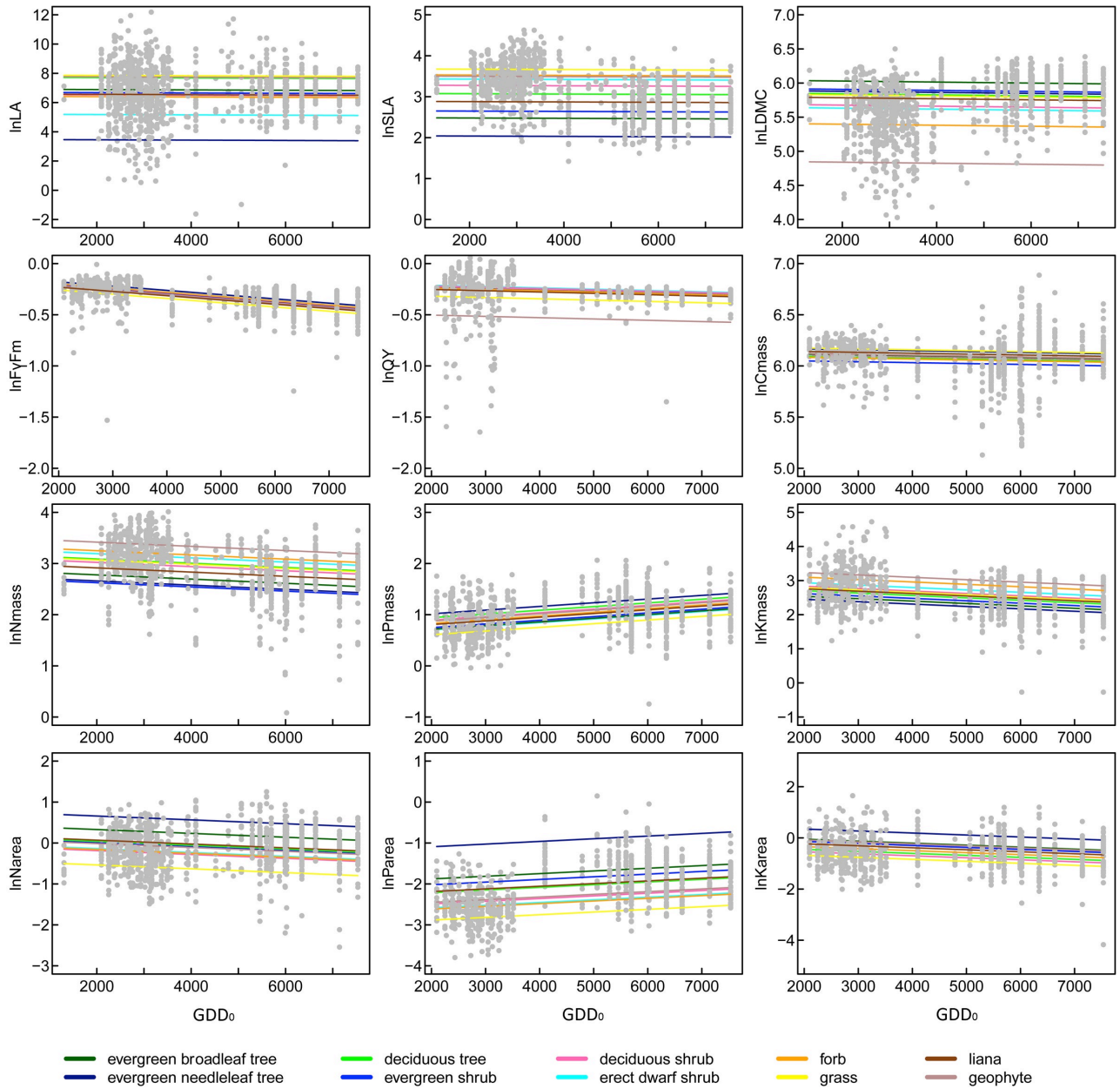


Figure S4: Partial residual plots for the relationships between leaf traits and growing degree days ( $GDD_0$ ), from a GLM analysis with PFT  $\times$  climate interactions included as predictors. Each point represents a species-site combination; fitted lines for each PFT are indicated by colours. Only significant PFT  $\times$  climate interactions ( $P < 0.01$ ) are shown.

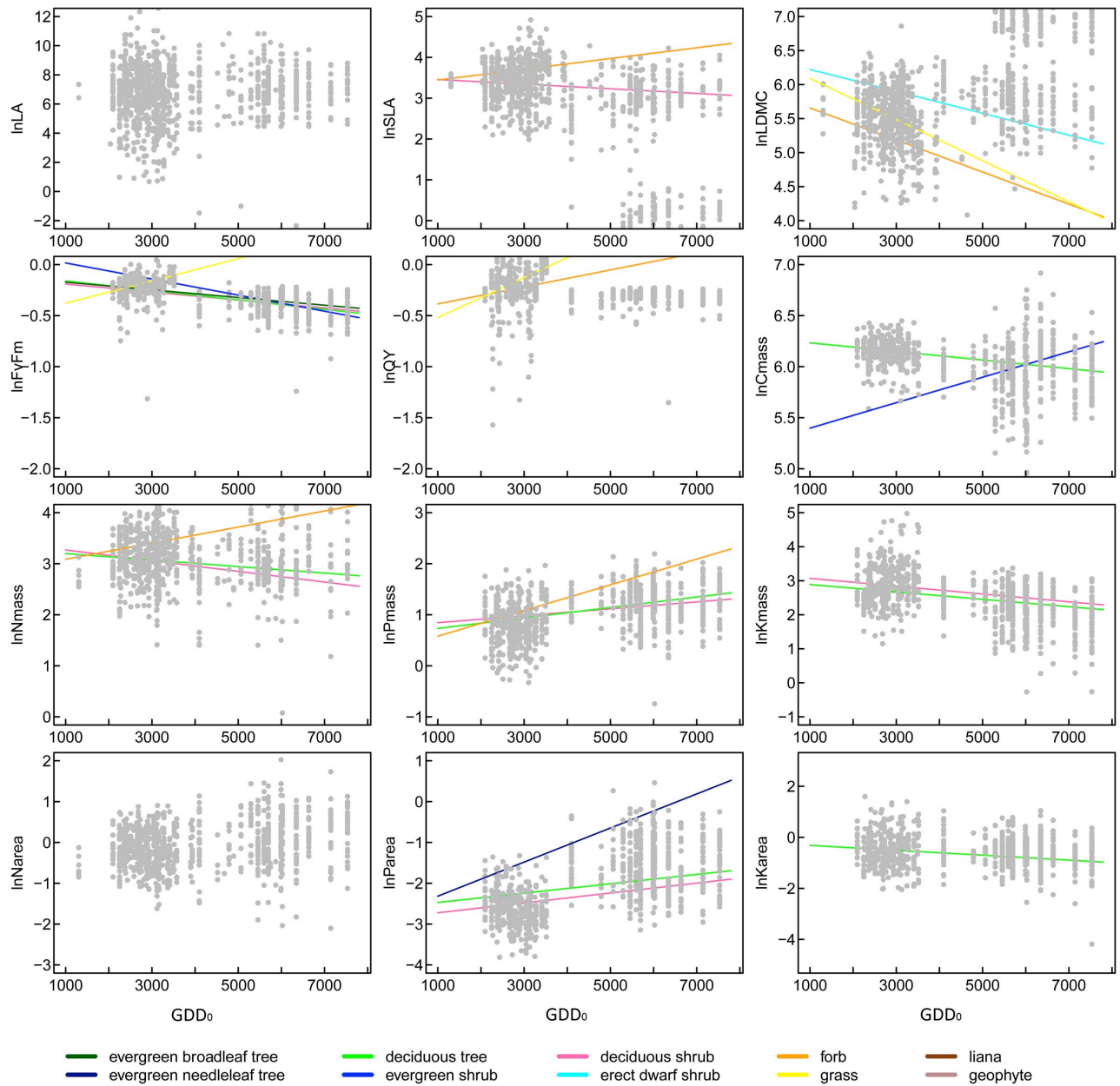


Table S1: Characteristics of sampling sites

site code	latitude (°N)	longitude (°E)	elevation (m)	vegetation type	number of species	GDD <sub>0</sub> (day °C)	$\alpha$
NECT01	42.88	118.48	1024	steppe	19	2433.20	0.67
NECT02	43.64	119.02	781	steppe	43	3047.57	0.55
NECT03	43.02	129.78	136	deciduous broad- leaved forest	24	2727.77	0.90
NECT04	42.98	130.08	114	evergreen conifer/deciduous broad-leaved forest	26	2870.71	0.88
NECT05	43.30	131.15	289	deciduous conifer/deciduous broad-leaved forest	42	2391.45	0.92
NECT06	43.12	131.00	244	evergreen conifer/deciduous broad-leaved forest	49	2097.04	0.98
NECT07	43.39	129.67	224	deciduous conifer/deciduous broad-leaved forest	40	2760.26	0.87
NECT08	43.25	128.64	601	evergreen conifer/deciduous broad-leaved forest	39	2702.15	0.93
NECT09	43.73	127.03	390	evergreen conifer/deciduous broad-leaved forest	55	2935.09	0.98
NECT10	43.81	125.68	252	evergreen conifer/deciduous broad-leaved forest	40	3278.10	0.81
NECT11	44.59	123.51	146	meadow steppe	19	3412.10	0.58
NECT12	44.43	123.27	150	meadow steppe	18	3407.62	0.57
NECT13	43.60	121.84	203	meadow steppe	20	3515.92	0.49
NECT14	44.12	121.77	202	meadow steppe	7	3490.75	0.50
NECT15	44.39	120.55	448	steppe	21	3047.41	0.59
NECT16	44.22	120.37	372	steppe	18	3248.01	0.55
NECT17	43.88	119.38	601	steppe	15	2683.63	0.62
NECT18	43.76	119.12	729	steppe	23	2816.77	0.59
NECT19	43.34	118.49	707	steppe	12	2646.25	0.61
NECT20	43.19	117.76	889	steppe	23	2583.25	0.62
NECT21	43.22	117.24	1259	steppe	23	2248.48	0.61
NECT22	43.39	116.89	1267	steppe	13	2274.88	0.58

NECT23	43.55	116.68	1261	steppe	22	2410.95	0.56
NECT24	43.69	116.64	1211	steppe	20	2374.09	0.52
NECT25	43.91	116.31	1199	steppe	24	2666.32	0.48
NECT26	43.90	115.32	1196	steppe	27	2509.65	0.44
NECT27	43.94	114.61	1123	desert steppe	19	2716.00	0.37
NECT28	43.83	113.83	1166	desert steppe	14	2895.45	0.28
NECT29	43.80	113.36	1017	desert steppe	11	3104.24	0.25
NECT30	43.72	112.59	974	desert steppe	21	3103.83	0.27
NECT31	43.63	112.17	999	desert steppe	16	3164.51	0.26
NECT32	43.66	111.92	1005	desert steppe	15	3127.61	0.26
NECT33	43.65	111.89	1017	desert steppe	16	3129.06	0.27
NSTEC01	36.24	117.02	368	conifer/deciduous broad-leaved forest	9	4787.79	0.73
NSTEC02	34.64	119.24	59	conifer/deciduous broad-leaved forest	13	5063.76	0.85
NSTEC03	32.05	118.86	76	conifer/deciduous broad-leaved forest	35	5598.22	0.98
NSTEC04	30.29	119.44	299	evergreen broad- leaved forest	21	5294.63	0.98
NSTEC05	29.80	121.79	231	evergreen broad- leaved forest	41	6022.80	0.98
NSTEC06	27.98	119.14	294	evergreen broad- leaved forest	57	5992.46	0.98
NSTEC07	26.59	118.05	239	evergreen broad- leaved forest	59	6345.35	0.98
NSTEC08	24.41	116.34	195	evergreen broad- leaved forest	35	7143.63	0.99
NSTEC09	23.17	112.54	240	evergreen broad- leaved forest	45	7532.60	0.99
NSTEC10	25.32	110.25	199	conifer/deciduous broad-leaved forest	29	6635.23	0.99
NSTEC11	26.84	109.60	390	conifer/deciduous broad-leaved forest	53	5697.20	0.99
NSTEC12	28.34	109.73	220	conifer/deciduous broad-leaved forest	39	5457.14	0.99
NSTEC13	33.50	111.49	449	deciduous broad- leaved forest	27	4098.36	0.97
NSTEC14	39.95	115.42	1253	deciduous broad- leaved forest	14	2357.31	0.81
X01	48.19	87.02	272	desert	8	2252.67	0.33
X02	46.40	85.95	701	desert	18	3575.09	0.23

---

X03	47.04	87.09	620	desert steppe	10	2930.53	0.31
X04	47.83	86.85	499	desert steppe	20	3118.13	0.29
X05	47.94	86.83	481	desert	11	3105.78	0.29
X06	48.17	87.08	709	desert steppe	15	2252.67	0.33
X07	48.11	87.01	1100	shrubland	6	2252.67	0.33
X08	48.33	87.12	1595	meadow	13	1304.34	0.57
X09	47.72	87.02	498	desert steppe	23	3165.82	0.28
X10	47.74	87.54	521	desert steppe	13	3146.09	0.27
X11	47.16	88.70	750	desert	8	3159.38	0.3
X12	46.30	89.55	885	desert	10	3021.81	0.32
X13	45.36	89.40	1068	desert	7	2929.95	0.33
X14	44.12	87.81	513	desert	11	3901.31	0.29
X15	44.08	87.79	583	desert steppe	18	3934.76	0.29
X16	44.07	88.08	852	desert steppe	11	3367.67	0.35
X17	44.00	88.06	1060	meadow	12	3369.92	0.31
X18	43.93	88.11	1430	shrubland	9	3153.82	0.37
X19	42.84	89.44	-91	shrubland	2	5745.44	0.09
X20	42.73	89.44	-136	desert	2	5869.71	0.14
X21	42.69	89.42	-146	desert	2	5989.24	0.08
X22	42.37	88.57	1721	desert	5	3112.29	0.28
X23	42.22	87.76	1445	desert	9	3093.93	0.23
X24	41.81	86.25	1444	desert	3	3617.6	0.19
X26	40.83	84.29	921	desert	4	4893.58	0.07
X27	41.48	84.21	928	desert	3	4678.9	0.21
X28	41.50	84.51	919	desert	3	4644.14	0.11
X29	41.66	84.89	902	desert	5	4520.84	0.10
X30	40.51	89.11	70	desert	3	4865.42	0.04
X31	48.33	87.12	1595	desert	1	1304.34	0.57
X32	40.83	84.29	26	desert	1	4893.58	0.07
X33	43.93	88.11	1430	shrubland	3	3153.82	0.37
X34	43.90	88.12	1935	evergreen conifer forest	9	2037.89	0.70

---



Table S2. Species sampled at each site.

Species	Sampling sites
<i>Abelia biflora</i>	NSTEC14
<i>Acanthopanax senticosus</i>	NECT05, NECT06, NECT09
<i>Acanthopanax trifoliatus</i>	NSTEC12
<i>Acer buergerianum</i>	NSTEC03, NSTEC13
<i>Acer cinnamomifolium</i>	NSTEC11
<i>Acer cordatum</i>	NSTEC06
<i>Acer ginnala</i>	NECT05, NECT06
<i>Acer mandshuricum</i>	NECT09
<i>Acer mono</i>	NECT03, NECT06, NECT08, NECT09, NSTEC14
<i>Acer tegmentosum</i>	NECT09
<i>Achnatherum sibiricum</i>	NECT23, NECT26
<i>Acmena acuminatissima</i>	NSTEC09
<i>Aconitum jaluense</i> var. <i>paniculigerum</i>	NECT09
<i>Aconitum kirinense</i>	NECT08
<i>Aconitum volubile</i>	NECT06
<i>Acronychia pedunculata</i>	NSTEC09
<i>Actaea asiatica</i>	NECT08
<i>Actinidia arguta</i>	NECT09
<i>Actinidia eriantha</i>	NSTEC07
<i>Adenophora gmelinii</i>	NECT25
<i>Adenophora stenanthina</i> var. <i>crispata</i>	NECT25
<i>Adenophora tetraphylla</i>	NECT05, NECT06, NECT07
<i>Adiantum pedatum</i>	NECT09
<i>Adina pilulifera</i>	NSTEC06, NSTEC07
<i>Adinandra megaphylla</i>	NSTEC06
<i>Aegopodium alpestre</i>	NECT05, NECT06, NECT07, NECT09
<i>Agrimonia pilosa</i>	NECT05, NECT07
<i>Agropyron cristatum</i>	NECT02
<i>Agropyron michnoi</i>	NECT17, NECT19, NECT20, NECT21, NECT23, NECT24, NECT25, NECT26, NECT27, NECT28, NECT29, NECT31, NECT33
<i>Ajania achilloides</i>	NECT28
<i>Akebia trifoliata</i>	NSTEC12
<i>Alangium chinense</i>	NSTEC03
<i>Albizia kalkora</i>	NSTEC02, NSTEC10, NSTEC13
<i>Alchornea trewioides</i>	NSTEC10
<i>Allium bidentatum</i>	NECT29
<i>Allium condensatum</i>	NECT23, NECT26
<i>Allium leucocephalum</i>	NECT29
<i>Allium mongolicum</i>	NECT15, NECT18, NECT21, NECT23, NECT24, NECT25, NECT26, NECT27, NECT28
<i>Allium neriniflorum</i>	NECT20
<i>Allium polyrhizum</i>	NECT27
<i>Allium ramosum</i>	NECT10, NECT17, NECT22, NECT23, NECT24, NECT25, NECT26, NECT27, NECT28, NECT30, NECT31, NECT32, NECT33
<i>Allium senescens</i>	NECT01, NECT11
<i>Allium</i> sp.	NECT02, NECT13
<i>Allium tenuissimum</i>	NECT32
<i>Alyxia vulgaris</i>	NSTEC07, NSTEC08
<i>Amaranthus retroflexus</i>	NECT12
<i>Ampelopsis cantoniensis</i>	NSTEC06

<i>Ampelopsis grossedentata</i>	NSTEC07
<i>Anemarrhena asphodeloides</i>	NECT02
<i>Angelica amurensis</i>	NECT06
<i>Antidesma japonicum</i>	NSTEC06, NSTEC07, NSTEC12
<i>Aphananthe aspera</i>	NSTEC03
<i>Aporosa dioica</i>	NSTEC09
<i>Aralia chinensis</i>	NSTEC12
<i>Aralia elata</i>	NECT09
<i>Arctium lappa</i>	NECT06, NECT08
<i>Ardisia crenata var. bicolor</i>	NSTEC05
<i>Ardisia hanceana</i>	NSTEC09
<i>Ardisia hypargyrea</i>	NSTEC09
<i>Ardisia japonica</i>	NSTEC05
<i>Ardisia lindleyana</i>	NSTEC07, NSTEC08
<i>Ardisia punctata</i>	NSTEC09
<i>Arisaema heterophyllum</i>	NECT09
<i>Aristida adscensionis</i>	NECT14, NECT16, NECT30
<i>Arnebia guttata</i>	NECT18, NECT20
<i>Artemisia anethifolia</i>	NECT11
<i>Artemisia annua</i>	NECT17, NECT18
<i>Artemisia capillaris</i>	NSTEC13
<i>Artemisia frigida</i>	NECT01, NECT02, NECT15, NECT18, NECT20, NECT21, NECT22, NECT23, NECT24, NECT25, NECT26, NECT27, NECT28, NECT30
<i>Artemisia keiskeana</i>	NECT07
<i>Artemisia lavandulaefolia</i>	NECT10
<i>Artemisia mongolica</i>	NECT10, NECT17
<i>Artemisia pubescens</i>	NECT27
<i>Artemisia sacrorum</i>	NECT01, NECT02, NECT10, NECT15
<i>Artemisia sacrorum var. glauca</i>	NECT01, NECT02, NECT15
<i>Artemisia scoparia</i>	NECT02, NECT10, NECT11, NECT12, NECT14, NECT20, NECT21, NECT22
<i>Artemisia sieversiana</i>	NECT10
<i>Artemisia sp.</i>	NECT02, NECT04, NECT32
<i>Artemisia sylvatica</i>	NECT04
<i>Asparagus brachyphyllus</i>	NSTEC13
<i>Asparagus dauricus</i>	NECT04, NECT27, NECT28, NECT29, NECT30, NECT31, NECT32, NECT33
<i>Asparagus sp.</i>	NECT05, NECT08, NECT09
<i>Aster ageratoides</i>	NECT11
<i>Aster scaber</i>	NECT06, NECT07, NECT08
<i>Astilbe chinensis</i>	NECT03, NECT05, NECT06, NECT07, NECT08, NECT09
<i>Astragalus adsurgens</i>	NECT12, NECT21, NECT26
<i>Astragalus galactites</i>	NECT01, NECT02, NECT26
<i>Astragalus scaberrimus</i>	NECT01, NECT02, NECT26
<i>Astragalus sp.</i>	NECT30
<i>Astragalus variabilis</i>	NECT25
<i>Atractylodes japonica</i>	NECT07
<i>Atraphaxis bracteata</i>	NECT30
<i>Atraphaxis manshurica</i>	NECT18
<i>Atriplex gmelinii</i>	NECT13
<i>Bassia dasyphylla</i>	NECT19
<i>Bauhinia championii</i>	NSTEC10
<i>Belamcanda chinensis</i>	NECT18
<i>Betula albosinensis</i>	NECT05
<i>Betula platyphylla</i>	NECT05, NECT06
<i>Betula utilis</i>	NECT03, NECT07

<i>Blastus cochinchinensis</i>	NSTEC09
<i>Brachybotrys paridiformis</i>	NECT06, NECT09
<i>Bromus inermis</i>	NECT05
<i>Broussonetia papyrifera</i>	NSTEC01
<i>Bupleurum longiradiatum</i>	NECT07
<i>Bupleurum scorzonerifolium</i>	NECT23, NECT25, NECT26
<i>Cacalia hastata</i>	NECT05, NECT06, NECT08, NECT09
<i>Calamagrostis epigejos</i>	NECT04, NECT11
<i>Calamus hoplites</i>	NSTEC09
<i>Callicarpa rubella</i>	NSTEC06
<i>Camellia cordifolia</i>	NSTEC07
<i>Camellia fraterna</i>	NSTEC05, NSTEC06, NSTEC07
<i>Camellia furfuracea</i>	NSTEC11
<i>Camellia oleifera</i>	NSTEC05, NSTEC11, NSTEC12
<i>Camellia sinensis</i>	NSTEC06
<i>Campanula falcata</i>	NECT10
<i>Campanula glomerata</i>	NECT05
<i>Canarium album</i>	NSTEC09
<i>Caragana microphylla</i>	NECT02, NECT16, NECT19, NECT23, NECT24, NECT25, NECT27, NECT28, NECT29, NECT30, NECT31, NECT33
<i>Caragana stenophylla</i>	NECT26, NECT27, NECT28, NECT29, NECT30, NECT31, NECT33
<i>Caragana tibetica</i>	NECT30
<i>Cardamine macrophylla</i>	NECT09, NECT10
<i>Carex appendiculata</i>	NECT06
<i>Carex duriuscula</i>	NECT10, NECT12, NECT22, NECT30
<i>Carex korshinskyi</i>	NECT21
<i>Carex meyeriana</i>	NECT09
<i>Carex pediformis</i>	NECT03, NECT05, NECT06
<i>Carex siderosticta</i>	NECT08, NECT09
<i>Carex sp.</i>	NECT04, NECT05, NECT07, NECT09
<i>Carpinus cordata</i>	NECT09
<i>Carya hunanensis</i>	NSTEC11
<i>Caryota ochlandra</i>	NSTEC09
<i>Castanea seguinii</i>	NSTEC12
<i>Castanopsis carlesii</i>	NSTEC05
<i>Castanopsis chinensis</i>	NSTEC09
<i>Castanopsis eyrei</i>	NSTEC04, NSTEC06, NSTEC07
<i>Castanopsis fargesii</i>	NSTEC05, NSTEC07, NSTEC08, NSTEC12
<i>Castanopsis fissa</i>	NSTEC06, NSTEC07, NSTEC08, NSTEC09
<i>Castanopsis fordii</i>	NSTEC07
<i>Castanopsis sclerophylla</i>	NSTEC04, NSTEC05, NSTEC06
<i>Caulophyllum robustum</i>	NECT06, NECT07
<i>Celastrus gemmatus</i>	NSTEC11
<i>Celastrus hindsii</i>	NSTEC10
<i>Celastrus hypoleucus</i>	NSTEC07
<i>Celastrus orbiculatus</i>	NSTEC05
<i>Celtis sinensis</i>	NSTEC03, NSTEC10, NSTEC11, NSTEC12
<i>Cerasus japonica</i>	NSTEC02
<i>Ceratoides latens</i>	NECT32, NECT33
<i>Cercis chinensis</i>	NSTEC03

<i>Chenopodium acuminatum</i>	NECT14, NECT16, NECT19, NECT27
<i>Chenopodium album</i>	NECT23, NECT24
<i>Chenopodium aristatum</i>	NECT16, NECT20, NECT24
<i>Chenopodium glaucum</i>	NECT13
<i>Chloranthus japonicus</i>	NECT06, NECT08
<i>Chloris virgata</i>	NECT11, NECT12, NECT13, NECT19, NECT25
<i>Choerospondias axillaris</i>	NSTEC07
<i>Chrysosplenium alternifolium</i>	NECT06
<i>Cinnamomum appelianum</i>	NSTEC12
<i>Cinnamomum camphora</i>	NSTEC03, NSTEC06
<i>Cirsium setosum</i>	NECT24
<i>Cleistogenes songorica</i>	NECT28, NECT30, NECT31, NECT33
<i>Cleistogenes squarrosa</i>	NECT01, NECT02, NECT15, NECT16, NECT17, NECT18, NECT20, NECT21, NECT22, NECT24
<i>Clematis armandii</i>	NSTEC11, NSTEC13
<i>Clematis fusca var violaceae</i>	NECT07
<i>Clematis hexapetala</i>	NECT10
<i>Clematis sp.</i>	NECT03, NECT04, NECT06, NECT09
<i>Clematis terniflora var. mandshurica</i>	NECT10
<i>Clerodendrum mandarinorum</i>	NSTEC12
<i>Clerodendrum trichotomum</i>	NSTEC02
<i>Cleyera japonica</i>	NSTEC05
<i>Clintonia udensis</i>	NECT08
<i>Convallaria majalis</i>	NECT07
<i>Convolvulus ammannii</i>	NECT27, NECT28, NECT30, NECT31, NECT32, NECT33
<i>Convolvulus arvensis</i>	NECT15, NECT20, NECT21
<i>Coptosapelta diffusa</i>	NSTEC06, NSTEC07, NSTEC08
<i>Coriaria nepalensis</i>	NSTEC13
<i>Corylus heterophylla</i>	NECT03, NECT05, NECT06, NECT07, NECT08, NECT09, NECT10, NSTEC14
<i>Cotinus coggygria</i>	NSTEC13
<i>Crataegus pinnatifida</i>	NECT10
<i>Crataegus sp.</i>	NECT05
<i>Croton tiglium</i>	NSTEC10
<i>Cryptocarya chinensis</i>	NSTEC09
<i>Cryptocarya concinna</i>	NSTEC09
<i>Cryptomeria fortunei</i>	NSTEC06
<i>Cudrania cochinchinensis</i>	NSTEC10
<i>Cudrania tricuspidata</i>	NSTEC03
<i>Cunninghamia lanceolata</i>	NSTEC04, NSTEC06, NSTEC12
<i>Cuscuta chinensis</i>	NECT16
<i>Cyclobalanopsis gilva</i>	NSTEC05
<i>Cyclobalanopsis glauca</i>	NSTEC04, NSTEC05, NSTEC06, NSTEC07, NSTEC10, NSTEC11, NSTEC12
<i>Cyclobalanopsis gracilis</i>	NSTEC05
<i>Cyclobalanopsis stewardiana</i>	NSTEC05
<i>Cymbaria dahurica</i>	NECT23, NECT26, NECT27
<i>Cynanchum sibiricum</i>	NECT18, NECT19
<i>Cynanchum thesioides</i>	NECT02
<i>Dalbergia hancei</i>	NSTEC11
<i>Dalbergia hupeana</i>	NSTEC02, NSTEC04, NSTEC10, NSTEC13
<i>Dalbergia mimosoides</i>	NSTEC05

<i>Damnacanthus indicus</i>	NSTEC05
<i>Daphniphyllum oldhamii</i>	NSTEC07, NSTEC08, NSTEC11
<i>Dasymaschalon rostratum</i>	NSTEC09
<i>Decaspermum fruticosum</i>	NSTEC10
<i>Delphinium grandiflorum</i>	NECT02, NECT18
<i>Dendrotrophe frutescens</i>	NSTEC08
<i>Desmodium fallax</i> var. <i>mandshuricum</i>	NECT09
<i>Dianthus chinensis</i>	NECT18, NECT20, NECT21
<i>Dichroa febrifuga</i>	NSTEC11
<i>Dioscorea cirrhosa</i>	NSTEC05
<i>Dioscorea nipponica</i>	NECT03, NECT04, NECT05, NECT06, NECT09
<i>Dioscorea opposita</i>	NSTEC05
<i>Diospyros cathayensis</i>	NSTEC12
<i>Diospyros eriantha</i>	NSTEC09
<i>Diospyros kaki</i> var. <i>sylvestris</i>	NSTEC07, NSTEC12
<i>Diospyros lotus</i>	NSTEC04, NSTEC13
<i>Diospyros miaoshanica</i>	NSTEC11
<i>Diospyros morrisiana</i>	NSTEC08
<i>Diospyros tutcheri</i>	NSTEC08
<i>Diploclisia glaucescens</i>	NSTEC07
<i>Dischidia chinensis</i>	NSTEC09
<i>Distylium myricoides</i>	NSTEC06
<i>Dontostemon integrifolius</i>	NECT20, NECT21
<i>Dracocephalum argunense</i>	NECT07
<i>Dryopteris crassirhizoma</i>	NECT09
<i>Echinochloa crusgalli</i>	NECT10, NECT11, NECT12
<i>Echinops gmelinii</i>	NECT16, NECT19, NECT24
<i>Echinops</i> sp.	NECT02
<i>Elaeagnus henryi</i>	NSTEC12
<i>Elaeocarpus glabripetalus</i>	NSTEC08
<i>Elaeocarpus japonicus</i>	NSTEC05, NSTEC06, NSTEC07
<i>Embelia rudis</i>	NSTEC06, NSTEC07
<i>Engelhardtia roxburghiana</i>	NSTEC08
<i>Ephedra distachya</i>	NECT17
<i>Ephedra sinica</i>	NECT26
<i>Equisetum arvense</i>	NECT06
<i>Equisetum hyemale</i>	NECT05, NECT06
<i>Eragrostis cilianensis</i>	NECT16
<i>Eragrostis minor</i>	NECT12, NECT14, NECT30, NECT31
<i>Erodium stephanianum</i>	NECT02, NECT13
<i>Erycibe obtusifolia</i>	NSTEC09
<i>Erythrophleum fordii</i>	NSTEC09
<i>Euonymus alatus</i>	NECT03, NECT05, NECT06, NECT08, NECT09, NSTEC03
<i>Euonymus dielsianus</i>	NSTEC11
<i>Euonymus pauciflorus</i>	NECT07, NECT09
<i>Euphorbia esula</i>	NECT01, NECT02, NECT20
<i>Euphorbia humifusa</i>	NECT01, NECT02, NECT31
<i>Euphorbia humifusa</i> var. <i>pilosa</i>	NECT16
<i>Euphorbia lucorum</i>	NECT07

<i>Euphorbia mandshurica</i>	NECT10
<i>Eurya alata</i>	NSTEC12
<i>Eurya loquaiana</i>	NSTEC11
<i>Eurya nitida</i>	NSTEC07
<i>Eurya rubiginosa</i>	NSTEC05
<i>Eurya rubiginosa var. attenuata</i>	NSTEC04
<i>Euscaphis japonica</i>	NSTEC06
<i>Evodia fargesii</i>	NSTEC08
<i>Evodia lepta</i>	NSTEC08
<i>Ferula bungeana</i>	NECT16, NECT30, NECT31, NECT33
<i>Festuca dahurica</i>	NECT29
<i>Ficus fulva</i>	NSTEC07, NSTEC08
<i>Ficus henryi</i>	NSTEC11
<i>Ficus heteromorpha</i>	NSTEC12
<i>Ficus pandurata</i>	NSTEC06
<i>Ficus pandurata var. angustifolia</i>	NSTEC12
<i>Ficus pumila</i>	NSTEC06
<i>Ficus sarmentosa var. henryi</i>	NSTEC12
<i>Ficus variolosa</i>	NSTEC10
<i>Ficus wightiana</i>	NSTEC09
<i>Filifolium sibiricum</i>	NECT21
<i>Firmiana platanifolia</i>	NSTEC03, NSTEC10
<i>Fissistigma glaucescens</i>	NSTEC09
<i>Fissistigma oldhamii</i>	NSTEC07
<i>Fordia cauliflora</i>	NSTEC10
<i>Fragaria orientalis</i>	NECT08, NECT09
<i>Fraxinus bungeana</i>	NSTEC14
<i>Fraxinus mandshurica</i>	NECT05, NECT06
<i>Fraxinus rhynchophylla</i>	NECT03, NECT04, NECT05, NECT06, NECT08
<i>Galium manshuricum</i>	NECT08
<i>Galium verum</i>	NECT23
<i>Garcinia oblongifolia</i>	NSTEC09
<i>Gardenia jasminoides</i>	NSTEC04, NSTEC07, NSTEC08, NSTEC11
<i>Gentiana dahurica</i>	NECT25
<i>Geranium sp.</i>	NECT08
<i>Geranium transbaicalicum</i>	NECT18, NECT20
<i>Geum sp.</i>	NECT05
<i>Gironniera subaequalis</i>	NSTEC09
<i>Glochidion eriocarpum</i>	NSTEC08
<i>Glochidion puberum</i>	NSTEC02, NSTEC03
<i>Glycine soja</i>	NECT09
<i>Glycyrrhiza uralensis</i>	NECT02, NECT23, NECT26
<i>Gnetum montanum</i>	NSTEC09
<i>Gnetum parvifolium</i>	NSTEC07
<i>Grewia biloba</i>	NSTEC01, NSTEC10
<i>Haplophyllum dauricum</i>	NECT02, NECT26, NECT30, NECT31, NECT32
<i>Haplophyllum tragacanthoides</i>	NECT32
<i>Hedysarum fruticosum</i>	NECT15, NECT17

<i>Helicia cochinchinensis</i>	NSTEC07
<i>Hemerocallis middendorffii</i>	NECT03, NECT04
<i>Heteropappus altaicus</i>	NECT02, NECT10, NECT15, NECT20, NECT22, NECT23, NECT24, NECT25, NECT26, NECT27
<i>Hieracium denticulata</i>	NECT12
<i>Hieracium denticuliferum</i>	NECT10
<i>Hippolytia trifida</i>	NECT30, NECT31, NECT32, NECT33
<i>Hovenia acerba</i>	NSTEC11
<i>Ilex asprella</i>	NSTEC08
<i>Ilex cornuta</i>	NSTEC03
<i>Ilex hylonoma</i>	NSTEC10
<i>Ilex pubescens</i>	NSTEC06, NSTEC07, NSTEC08
<i>Ilex purpurea</i>	NSTEC04, NSTEC11
<i>Ilex viridis</i>	NSTEC07
<i>Impatiens furcillata</i>	NECT06, NECT09
<i>Indigofera ichangensis</i>	NSTEC06
<i>Indocalamus tessellatus</i>	NSTEC07
<i>Inula britannica</i>	NECT11, NECT12
<i>Iris lactea var. chinensis</i>	NECT10, NECT13, NECT22, NECT25, NECT33
<i>Itea chinensis var. oblonga</i>	NSTEC06, NSTEC07
<i>Ixeris chinensis</i>	NECT04
<i>Ixeris denticulata</i>	NECT10, NECT12
<i>Ixora chinensis</i>	NSTEC09
<i>Jasminum lanceolarium</i>	NSTEC12
<i>Juglans mandshurica</i>	NECT09, NSTEC14
<i>Kadsura longipedunculata</i>	NSTEC06, NSTEC11, NSTEC12
<i>Kalimeris integrifolia</i>	NECT11
<i>Kalopanax septemlobus</i>	NSTEC03, NSTEC12
<i>Kochia prostrata</i>	NECT23, NECT24, NECT27, NECT29
<i>Kochia scoparia var. sieversiana</i>	NECT12, NECT13
<i>Kummerowia striata</i>	NECT10, NECT12
<i>Lamium japonicum</i>	NECT11
<i>Larix olgensis</i>	NECT05, NECT07
<i>Lasianthus lancilimbus</i>	NSTEC06, NSTEC07
<i>Lathyrus davidii</i>	NECT04
<i>Lathyrus hedysaroides var. subsericea</i>	NECT15
<i>Laurocerasus spinulosa</i>	NSTEC06
<i>Laurocerasus zippeliana</i>	NSTEC11
<i>Leontopodium leontopodioides</i>	NECT15
<i>Leonurus japonicus</i>	NECT20
<i>Lepidium apetalum</i>	NECT13
<i>Lespedeza bicolor</i>	NECT03, NECT05, NECT06, NECT07, NECT08, NSTEC13, NSTEC14
<i>Lespedeza davurica</i>	NECT01, NECT02, NECT10, NECT15, NECT17, NECT18, NECT19, NECT20, NECT21
<i>Lespedeza formosa</i>	NSTEC02
<i>Lespedeza hedysaroides</i>	NECT15, NECT20
<i>Leymus chinensis</i>	NECT01, NECT11, NECT12, NECT13, NECT17, NECT18, NECT20, NECT21, NECT22, NECT24, NECT25, NECT26
<i>Ligustrum lucidum</i>	NSTEC03
<i>Ligustrum sinense</i>	NSTEC11
<i>Lilium lancifolium</i>	NECT08, NECT09

<i>Limonium aureum</i>	NECT32
<i>Limonium bicolor</i>	NECT13, NECT20, NECT26
<i>Lindera aggregata</i>	NSTEC04, NSTEC06
<i>Lindera chunii</i>	NSTEC09
<i>Lindera communis</i>	NSTEC11
<i>Lindera glauca</i>	NSTEC03, NSTEC06
<i>Lindera megaphylla</i>	NSTEC11
<i>Linum stelleroides</i>	NECT10
<i>Liquidambar formosana</i>	NSTEC03, NSTEC05, NSTEC06
<i>Lithocarpus glaber</i>	NSTEC05, NSTEC06, NSTEC07, NSTEC08, NSTEC11
<i>Litsea coreana</i>	NSTEC11, NSTEC12
<i>Litsea coreana var. sinensis</i>	NSTEC10
<i>Litsea cubeba</i>	NSTEC08
<i>Litsea machiloides</i>	NSTEC08
<i>Litsea wilsonii</i>	NSTEC06, NSTEC07, NSTEC08
<i>Lonicera chrysantha</i>	NECT03, NECT05
<i>Lonicera cinerea</i>	NSTEC06
<i>Lonicera maackii</i>	NECT06, NECT09, NSTEC14
<i>Lonicera monantha</i>	NECT09
<i>Lonicera tartarinowii</i>	NSTEC13
<i>Loropetalum chinense</i>	NSTEC04, NSTEC05, NSTEC06, NSTEC07, NSTEC10, NSTEC12
<i>Lychnis fulgens</i>	NECT06, NECT09
<i>Lygodium alpestre</i>	NECT09
<i>Lyonia ovalifolia var. elliptica</i>	NSTEC07
<i>Maackia amurensis</i>	NECT05, NECT06
<i>Machilus chinensis</i>	NSTEC09
<i>Machilus pauhoi</i>	NSTEC11
<i>Machilus thunbergii</i>	NSTEC05
<i>Macropanax rosthornii</i>	NSTEC11
<i>Maesa japonica</i>	NSTEC06, NSTEC11, NSTEC12
<i>Maesa perlaria</i>	NSTEC11
<i>Mahonia japonica</i>	NSTEC12
<i>Mallotus philippensis</i>	NSTEC11
<i>Matteuccia struthiopteris</i>	NECT09
<i>Medicago lupulina</i>	NECT16
<i>Melastoma sanguineum</i>	NSTEC09
<i>Melilotoides ruthenica</i>	NECT02, NECT10, NECT17, NECT18, NECT20, NECT21, NECT22, NECT24, NECT25, NECT26, NECT27
<i>Melilotus suaveolens</i>	NECT11
<i>Meliosma cuneifolia</i>	NSTEC09
<i>Memecylon ligustrifolium</i>	NSTEC09
<i>Messerschmidia sibirica</i>	NECT13
<i>Metaplexis japonica</i>	NECT13
<i>Microdesmis caseariifolia</i>	NSTEC09
<i>Millettia dielsiana</i>	NSTEC07, NSTEC10, NSTEC11
<i>Millettia reticulata</i>	NSTEC06, NSTEC10
<i>Monotropa hypopitys</i>	NECT08
<i>Morinda umbellata</i>	NSTEC05, NSTEC06
<i>Mukdenia rossii</i>	NECT05
<i>Mussaenda erosa</i>	NSTEC08



<i>Mussaenda esquirolii</i>	NSTEC12
<i>Mussaenda pubescens</i>	NSTEC07
<i>Myrica rubra</i>	NSTEC05
<i>Neolitsea aurata var zhejinagensis</i>	NSTEC05
<i>Onoclea sensibilis</i>	NECT05
<i>Oreocnide frutescens</i>	NSTEC06
<i>Ormosia glaberrima</i>	NSTEC09
<i>Ormosia henryi</i>	NSTEC05
<i>Orostachys malacophylla</i>	NECT23
<i>Osmanthus cooperi</i>	NSTEC04
<i>Osmanthus fragrans</i>	NSTEC03, NSTEC11
<i>Oxytropis myriophylla</i>	NECT25
<i>Oxytropis sp.</i>	NECT02, NECT25
<i>Paederia scandens</i>	NSTEC03
<i>Paeonia japonica</i>	NECT06, NECT07
<i>Paris verticillata</i>	NECT08
<i>Parthenocissus laetevirens</i>	NSTEC11
<i>Parthenocissus tricuspidata</i>	NSTEC03
<i>Patrinia rupestris</i>	NECT15
<i>Paulownia kawakamii</i>	NSTEC07
<i>Peganum harmala</i>	NECT28, NECT33
<i>Pennisetum flaccidum</i>	NECT15, NECT16, NECT17, NECT18, NECT20
<i>Pericampylus glaucus</i>	NSTEC06, NSTEC07
<i>Periploca sepium</i>	NSTEC13
<i>Peucedanum terebinthaceum</i>	NECT07
<i>Phellodendron amurense</i>	NECT05, NECT06
<i>Philadelphus tenuifolius</i>	NECT03, NECT07, NECT08, NECT09
<i>Phlomis maximowiczii</i>	NECT04, NECT06, NECT09
<i>Phlomis tuberosa</i>	NECT25
<i>Phoebe hunanensis</i>	NSTEC07
<i>Phoebe sheareri</i>	NSTEC11
<i>Photinia beauverdiana</i>	NSTEC11
<i>Photinia davidsoniae</i>	NSTEC12
<i>Photinia glabra</i>	NSTEC04, NSTEC08
<i>Photinia parvifolia</i>	NSTEC07
<i>Photinia serrulata</i>	NSTEC07
<i>Phragmites australis</i>	NECT05, NECT11, NECT13
<i>Phragmites hirsutus</i>	NECT11
<i>Phyllostachys heteroclada</i>	NSTEC03
<i>Picea sp.</i>	NECT07
<i>Picrasma chinensis</i>	NSTEC09
<i>Pinus koraiensis</i>	NECT06, NECT08, NECT09
<i>Pinus massoniana</i>	NSTEC03, NSTEC06, NSTEC10, NSTEC12
<i>Pinus tabuliformis</i>	NECT04, NECT10, NSTEC01, NSTEC02, NSTEC13
<i>Piper chinense</i>	NSTEC09
<i>Piper hancei</i>	NSTEC11
<i>Piper wallichii</i>	NSTEC11
<i>Pistacia chinensis</i>	NSTEC03, NSTEC12, NSTEC13
<i>Pittosporum sahnianum</i>	NSTEC06, NSTEC12

<i>Pittosporum tobira</i>	NSTEC03
<i>Plantago depressa</i>	NECT12
<i>Platycladus orientalis</i>	NSTEC02, NSTEC13
<i>Platycodon grandiflorus</i>	NECT10, NSTEC02
<i>Pleioblastus amarus</i>	NSTEC05, NSTEC06, NSTEC07
<i>Poa angustifolia</i>	NECT24
<i>Podocarpium podocarpum</i>	NSTEC12
<i>Podocarpium podocarpum var. fallax</i>	NSTEC11
<i>Podocarpium podocarpum var. oxyphyllum</i>	NSTEC03, NSTEC11
<i>Polygala tenuifolia</i>	NECT01, NECT10
<i>Polygonatum oderatum</i>	NECT04, NECT06, NECT07
<i>Polygonum divaricatum</i>	NECT17, NECT18, NECT20, NECT21, NECT23
<i>Polygonum sibiricum</i>	NECT11, NECT13
<i>Populus davidiana</i>	NECT03, NECT09, NECT10
<i>Potentilla acaulis</i>	NECT21, NECT22, NECT24, NECT24
<i>Potentilla bifurca</i>	NECT21, NECT22, NECT24
<i>Potentilla chinensis</i>	NECT10, NECT12, NECT17, NECT20, NECT21, NECT24, NECT25, NECT26
<i>Potentilla conferta</i>	NECT18
<i>Potentilla discolor</i>	NECT01
<i>Potentilla flagellaris</i>	NECT12
<i>Potentilla tanacetifolia</i>	NECT02
<i>Premna fordii</i>	NSTEC06
<i>Prunus/Malus sp.</i>	NECT06
<i>Prunus padus</i>	NECT04
<i>Psammochloa villosa</i>	NECT24
<i>Psychotria serpens</i>	NSTEC09
<i>Pteridium aquilinum</i>	NECT03, NECT04, NECT05, NECT06, NECT08, NECT09
<i>Puccinella chinampoensis</i>	NECT11
<i>Pueraria lobata</i>	NSTEC10
<i>Pyrus betulifolia</i>	NSTEC13
<i>Quercus acutissima</i>	NSTEC01, NSTEC02, NSTEC03
<i>Quercus aliena</i>	NSTEC03, NSTEC12, NSTEC13
<i>Quercus baronii</i>	NSTEC13
<i>Quercus chenii</i>	NSTEC13
<i>Quercus fabrei</i>	NSTEC01
<i>Quercus mongolica</i>	NECT04, NECT05, NECT06, NECT07, NECT08, NECT09, NECT10, NSTEC14
<i>Quercus serrata var. brevipetiolata</i>	NSTEC02
<i>Radermachera sinica</i>	NSTEC10
<i>Randia cochinchinensis</i>	NSTEC07, NSTEC08, NSTEC09
<i>Ranunculus chinensis</i>	NECT07
<i>Rapanea kwangsiensis</i>	NSTEC10
<i>Raphiolepis indica</i>	NSTEC04
<i>Raphiolepis lanceolata</i>	NSTEC08
<i>Reaumuria soongarica</i>	NECT32
<i>Rhamnus leptophylla</i>	NSTEC12, NSTEC13, NSTEC14
<i>Rhamnus schneideri</i>	NECT04, NECT07
<i>Rhamnus sp.</i>	NECT05, NECT06
<i>Rhaponticum uniflorum</i>	NECT15, NECT25, NECT26, NECT27
<i>Rhododendron mariae</i>	NSTEC08
<i>Rhododendron mariesii</i>	NSTEC04

<i>Rhododendron ovatum</i>	NSTEC04, NSTEC05
<i>Rhododendron sp.</i>	NECT07
<i>Rhodomyrtus tomentosa</i>	NSTEC08
<i>Rhus chinensis</i>	NSTEC13
<i>Ribes amurensis</i>	NECT03
<i>Robinia pseudoacacia</i>	NSTEC01
<i>Rosa cymosa</i>	NSTEC03
<i>Rosa laevigata</i>	NSTEC06
<i>Rosa sp.</i>	NECT03, NECT08, NECT10
<i>Rourea minor</i>	NSTEC09
<i>Rubia cordifolia</i>	NECT09
<i>Rubia sp.</i>	NECT06, NECT08
<i>Rubia sylvatica</i>	NECT04, NECT05, NECT09
<i>Rubus columellaris</i>	NSTEC07
<i>Rubus corchorifolius</i>	NSTEC06, NSTEC07
<i>Rubus ichangensis</i>	NSTEC11
<i>Rubus irenaeus</i>	NSTEC11
<i>Rubus malifolius</i>	NSTEC11
<i>Rubus parvifolius</i>	NSTEC03
<i>Rubus sp.</i>	NECT08
<i>Rubus xanthocarpus</i>	NSTEC14
<i>Sabia swinhoei</i>	NSTEC06, NSTEC11
<i>Sabina chinensis</i>	NSTEC03
<i>Sageretia henryi</i>	NSTEC11, NSTEC12
<i>Sageretia thea</i>	NSTEC06, NSTEC13
<i>Salix gordejewii</i>	NECT16
<i>Salix gracilistyla</i>	NECT05
<i>Salix viminalis</i>	NECT05
<i>Salsola collina</i>	NECT13, NECT15, NECT18, NECT19, NECT20, NECT22, NECT27, NECT28, NECT29, NECT30, NECT31, NECT33
<i>Salsola passerina</i>	NECT32
<i>Salsola ruthenica</i>	NECT16
<i>Sambucus sp.</i>	NECT08
<i>Sanguisorba officinalis</i>	NECT11
<i>Sanicula chinensis</i>	NECT09
<i>Sapium discolor</i>	NSTEC08
<i>Sapium rotundifolium</i>	NSTEC10
<i>Sarcandra glabra</i>	NSTEC07, NSTEC09
<i>Sarcosperma arboreum</i>	NSTEC09
<i>Saussurea japonica</i>	NECT02
<i>Saussurea parviflora</i>	NECT02
<i>Schefflera octophylla</i>	NSTEC08
<i>Schima remotiserrata</i>	NSTEC08
<i>Schima superba</i>	NSTEC04, NSTEC05, NSTEC09
<i>Schizonepeta multifida</i>	NECT23
<i>Scorzonera divaricata</i>	NECT28, NECT29, NECT30, NECT31, NECT32
<i>Scorzonera muriculata</i>	NECT32
<i>Scutellaria baicalensis</i>	NECT01, NECT02, NECT18
<i>Scutellaria scordifolia</i>	NECT02
<i>Scutellaria sp.</i>	NECT07

<i>Scutellaria viscidula</i>	NECT19
<i>Securinega suffruticosa</i>	NECT04, NECT10
<i>Sedum aizoon</i>	NECT07, NECT09
<i>Serissa serissoides</i>	NSTEC03, NSTEC11, NSTEC12
<i>Serratula glauca</i>	NECT18
<i>Serratula yamatsutana</i>	NECT02, NECT15, NECT21, NECT23, NECT25, NECT26
<i>Sesamum indicum</i>	NECT02
<i>Setaria viridis</i>	NECT10, NECT13, NECT14, NECT15, NECT16, NECT19, NECT26, NECT33
<i>Setaria viridis var. depressa</i>	NECT30, NECT31
<i>Siler divaricatum</i>	NECT18, NECT26
<i>Siphonostegia chinensis</i>	NECT10, NECT10
<i>Sloanea sinensis</i>	NSTEC07
<i>Smilax biumbellata</i>	NSTEC10
<i>Smilax china</i>	NSTEC04, NSTEC05, NSTEC08
<i>Smilax glabra</i>	NSTEC06
<i>Smilax glaucochina</i>	NSTEC03
<i>Smilax hypoglauca</i>	NSTEC09, NSTEC13
<i>Smilax lanceifolia</i>	NSTEC07
<i>Smilax polycolea</i>	NSTEC11
<i>Sonchus brachyotus</i>	NECT10
<i>Sophora flavescens</i>	NECT18
<i>Sorbaria sorbifolia</i>	NECT05, NECT06
<i>Spiraea pubescens</i>	NSTEC14
<i>Spiraea trilobata</i>	NECT23, NSTEC01
<i>Stauntonia chinensis</i>	NSTEC05
<i>Stellaria chamaejasme</i>	NECT02, NECT23
<i>Sterculia lanceolata</i>	NSTEC09
<i>Stipa glareosa</i>	NECT29
<i>Stipa gobica</i>	NECT30, NECT31, NECT32, NECT33
<i>Stipa grandis</i>	NECT21
<i>Stipa krylovii</i>	NECT01, NECT02, NECT15, NECT22, NECT23, NECT24, NECT25, NECT26, NECT27, NECT28
<i>Streptopus sp.</i>	NECT09
<i>Streptopus streptopoides</i>	NECT03
<i>Styrax calvescens</i>	NSTEC07
<i>Styrax japonicus</i>	NSTEC05
<i>Styrax obassis</i>	NSTEC06
<i>Styrax odoratissima</i>	NSTEC07, NSTEC10
<i>Suaeda glauca</i>	NECT11, NECT13
<i>Swainsona salsula</i>	NECT13
<i>Swida bretschnideri</i>	NSTEC14
<i>Swida wilsoniana</i>	NSTEC12
<i>Symplocos heishanensis</i>	NSTEC05
<i>Symplocos lancilimba</i>	NSTEC05
<i>Symplocos laurina</i>	NSTEC11
<i>Symplocos paniculata</i>	NSTEC03
<i>Symplocos stellaris</i>	NSTEC05
<i>Symplocos sumuntia</i>	NSTEC04, NSTEC05, NSTEC07
<i>Syneilesis aconitifolia</i>	NECT04, NECT07
<i>Synurus deltoides</i>	NECT07

<i>Syzygium austrosinense</i>	NSTEC07, NSTEC08
<i>Taraxacum mongolicum</i>	NECT02
<i>Taraxacum ohwianum</i>	NECT12, NECT13
<i>Tarenna attenuata</i>	NSTEC08
<i>Tarenna mollissima</i>	NSTEC06, NSTEC07
<i>Tarennoidea wallichii</i>	NSTEC07
<i>Tetracera asiatica</i>	NSTEC09
<i>Tetrastigma hemsleyanum</i>	NSTEC09
<i>Tetrastigma planicaule</i>	NSTEC09
<i>Tetrastigma wulinshanense</i>	NSTEC11
<i>Thalictrum simplex</i>	NECT11
<i>Thalictrum sp.</i>	NECT01, NECT08, NECT09, NECT10, NECT26
<i>Thalictrum squarrosum</i>	NECT15, NECT16, NECT18, NECT21
<i>Thalictrum squarrosum var. supradecompositum</i>	NECT02, NECT25
<i>Thalictrum tuberiferum</i>	NECT03, NECT04, NECT05, NECT06
<i>Thalictrum squarrosum</i>	NECT26
<i>Thermopsis lanceolata</i>	NECT13, NECT23
<i>Thymus mongolicus</i>	NECT01, NECT02
<i>Tilia amurensis</i>	NECT03, NECT05, NECT07
<i>Tilia mandshurica</i>	NECT03, NECT06, NECT07, NECT08, NECT09
<i>Tilia paucicostata</i>	NSTEC14
<i>Toxicodendron succedaneum</i>	NSTEC06, NSTEC07, NSTEC08
<i>Toxicodendron sylvestre</i>	NSTEC11, NSTEC12
<i>Trachelospermum axillare</i>	NSTEC06
<i>Trachelospermum jasminoides</i>	NSTEC03, NSTEC05, NSTEC10, NSTEC11
<i>Tragus racemosus</i>	NECT02, NECT14, NECT16
<i>Tribulus terrestris</i>	NECT02, NECT14, NECT16, NECT19, NECT30, NECT33
<i>Trifolium lupinaster</i>	NECT07
<i>Tripolium vulgare</i>	NECT10
<i>Turpinia arguta</i>	NSTEC11
<i>Tylophora silvestris</i>	NSTEC05
<i>Ulmus changii</i>	NSTEC06
<i>Ulmus davidiana var. japonica</i>	NECT03, NECT04, NECT05, NECT06, NECT09, NECT10, NECT17, NECT21, NSTEC14
<i>Ulmus macrocarpa</i>	NECT08
<i>Ulmus parvifolia</i>	NSTEC03
<i>Urtica angustifolia</i>	NECT03, NECT04
<i>Vaccinium bracteatum</i>	NSTEC06, NSTEC07
<i>Vaccinium mandarinorum</i>	NSTEC04, NSTEC05, NSTEC06
<i>Vernicia fordii</i>	NSTEC03, NSTEC06, NSTEC13
<i>Vernicia montana</i>	NSTEC07
<i>Viburnum brachybotryum</i>	NSTEC11
<i>Viburnum burejaeticum</i>	NECT09
<i>Viburnum dilatatum</i>	NSTEC11
<i>Viburnum erosum</i>	NSTEC05
<i>Viburnum sargentii</i>	NECT05, NECT06, NECT09
<i>Vicia amoena</i>	NECT04
<i>Vicia unijuga</i>	NECT05, NECT06, NECT07, NECT08
<i>Viola acuminata</i>	NECT07, NECT08, NECT09
<i>Viola biflora</i>	NECT09

<i>Viola sp.</i>	NECT03, NECT07, NECT08, NECT10
<i>Viola variegata</i>	NECT04
<i>Vitex negundo</i>	NSTEC02, NSTEC03, NSTEC10, NSTEC13
<i>Vitex negundo var. heterophylla</i>	NSTEC01
<i>Vitis amurensis</i>	NECT06, NECT08
<i>Vitis bryoniifolia</i>	NSTEC13
<i>Vitis heyneana ssp. ficifolia</i>	NSTEC01
<i>Wisteria sinensis</i>	NSTEC04
<i>Xanthium strumarium</i>	NECT12
<i>Zanthoxylum echinocarpum</i>	NSTEC12
<i>Zanthoxylum podocarpum</i>	NSTEC10
<i>Zanthoxylum schinifolium</i>	NSTEC02
<i>Zelkova serrata</i>	NSTEC13
<i>unidentified chenopod</i>	NECT27
<i>unidentified forb</i>	NECT01, NECT06, NECT08, NECT10
<i>unidentified geophyte</i>	NECT02
<i>unidentified grass</i>	NECT01, NECT02, NECT15, NECT17, NECT21
<i>unidentified ground creeper</i>	NECT09
<i>unidentified Scrophulariaceae</i>	NECT02
<i>unidentified semi-rosette forb</i>	NECT02

Table S3: Principal components of climate data based on the country-wide, 10-km grid. Each component (axis) represents a linear combination of variables. Loadings for variables represent the contribution of each variable to the axis. Values are shown in **bold** when their magnitude > 0.5.

	PC 1	PC 2	PC 3
MAT	<b>0.883</b>	-0.422	0.179
GDD <sub>0</sub>	<b>0.879</b>	-0.411	0.142
MTCO	<b>0.865</b>	-0.144	0.166
MTWA	<b>0.669</b>	<b>-0.603</b>	0.120
PAR <sub>0</sub>	<b>0.672</b>	<b>-0.650</b>	0.234
MAP	<b>0.903</b>	0.407	0.046
$\alpha$	<b>0.578</b>	<b>0.744</b>	0.166
MI	<b>0.768</b>	<b>0.623</b>	0.030
P <sub>DJF</sub>	<b>0.876</b>	0.166	-0.387
P <sub>JJA</sub>	<b>0.759</b>	<b>0.540</b>	0.330
Timing	<b>-0.639</b>	0.100	<b>0.702</b>
Seasonality	-0.752	0.094	0.384
Variance explained	60.5%	21.7%	9.0%