

Carassius praecipuus, a dwarf new species of goldfish from the Mekong drainage in central Laos (Teleostei: Cyprinidae)

Author: Kottelat, Maurice

Source: Revue suisse de Zoologie, 124(2) : 323-329

Published By: Muséum d'histoire naturelle, Genève

URL: <https://doi.org/10.5281/zenodo.893541>

BioOne Complete (complete.BioOne.org) is a full-text database of 200 subscribed and open-access titles in the biological, ecological, and environmental sciences published by nonprofit societies, associations, museums, institutions, and presses.

Your use of this PDF, the BioOne Complete website, and all posted and associated content indicates your acceptance of BioOne's Terms of Use, available at www.bioone.org/terms-of-use.

Usage of BioOne Complete content is strictly limited to personal, educational, and non-commercial use. Commercial inquiries or rights and permissions requests should be directed to the individual publisher as copyright holder.

BioOne sees sustainable scholarly publishing as an inherently collaborative enterprise connecting authors, nonprofit publishers, academic institutions, research libraries, and research funders in the common goal of maximizing access to critical research.

***Carassius praecipuus*, a dwarf new species of goldfish from the Mekong drainage in central Laos (Teleostei: Cyprinidae)**

Maurice Kottelat

Rue des Rauragues 6, 2800 Delémont, Switzerland (permanent address); and Lee Kong Chian Natural History Museum, National University of Singapore, 2 Conservatory Drive, Singapore 117377. E-mail: mkottelat@gmail.com

Abstract: *Carassius praecipuus*, new species, is described from a hill stream in the upper Nam Ngum watershed in Mekong drainage in central Laos. It is distinguished from all congeners by the short dorsal fin, a small number of branched dorsal-fin rays, lateral line scales and gill rakers. It reaches sexual maturity around 70 mm SL. This is the first species of the genus discovered outside East and North Asia and Europe. The upper Nam Ngum watershed includes a part of the Plain of Jars, which had been hypothesised to have allowed the movement of a number of fish lineages between the rivers flowing to the Gulf of Tonkin and the Mekong drainage.

Keywords: Nam Ngum River - zoogeography - Oriental Region - Plain of Jars.

INTRODUCTION

The genus *Carassius* includes about seven species, among them the well known goldfish [*C. auratus* (Linnaeus, 1758)]. They are medium-sized fishes that inhabit mainly swamps, lakes and slow flowing streams. Their natural distribution until now was restricted to northern Palaearctic and East Asia. This article describes the first Southeast Asian species of the genus.

MATERIAL AND METHODS

Measurements and counts follow Kottelat (2001) and Kottelat & Freyhof (2007). Last 2 branched dorsal and anal-fin rays articulating on a single pterygiophore are noted as "1½". Lateral line scale counts are given as (scales on body)+(scales on caudal-fin base). Frequencies of meristic values are indicated in parentheses, if more than one value is observed; asterisks indicate the condition for the holotype. Only the six largest specimens were measured; selected counts were obtained also from the remaining specimens. When possible, toponymy and spelling follow the 1:100'000 topographic map (Service Géographique d'Etat, 1985, sheet E48-14). Abbreviations used: CMK, collection of the author; MHNG, Muséum d'histoire naturelle, Genève; and ZRC, Lee Kong Chian Natural History Museum, National University, Singapore.

***Carassius praecipuus*, new species**

Figs 1-2

Holotype: MHNG 2767.087, 55.6 mm SL; Laos, Xiangkhouang Province, Nam Chat upstream of Ban Houay Sod, 19°37'24"N 102°52'17"E, 1142 masl; M. Kottelat *et al.*, 29 February 2012.

Paratypes: CMK 22748, 16 (+3 ethanol-fixed); ZRC 56275, 5; 32.7-62.0 mm SL; same data as holotype.

Comparison material: *Carassius auratus*: CMK 25714, 3, 68.4-81.5 mm SL; Laos: Houaphan Province: Nam Ma drainage: Nam Long upstream of Ban Kong Koun.

Diagnosis: *Carassius praecipuus* is distinguished from all other congeners in having the origin of the anal fin located behind a vertical through the base of last dorsal-fin ray (vs. under dorsal-fin base), fewer branched dorsal-fin rays (9-11½, vs. 11-21½), fewer lateral line scales (25-27 + 1, vs. 27-36 [total]) and fewer gill rakers (total 20-21, vs. 23-128). It reaches sexual maturity around 60-70 mm SL.

Description: See Table 1 for morphometric data of holotype and 5 largest paratypes. Largest known specimen 62 mm SL. Body moderately elongate, compressed. Dorsal body profile arched but made of a straight line on top of head, then an angle at nape and a

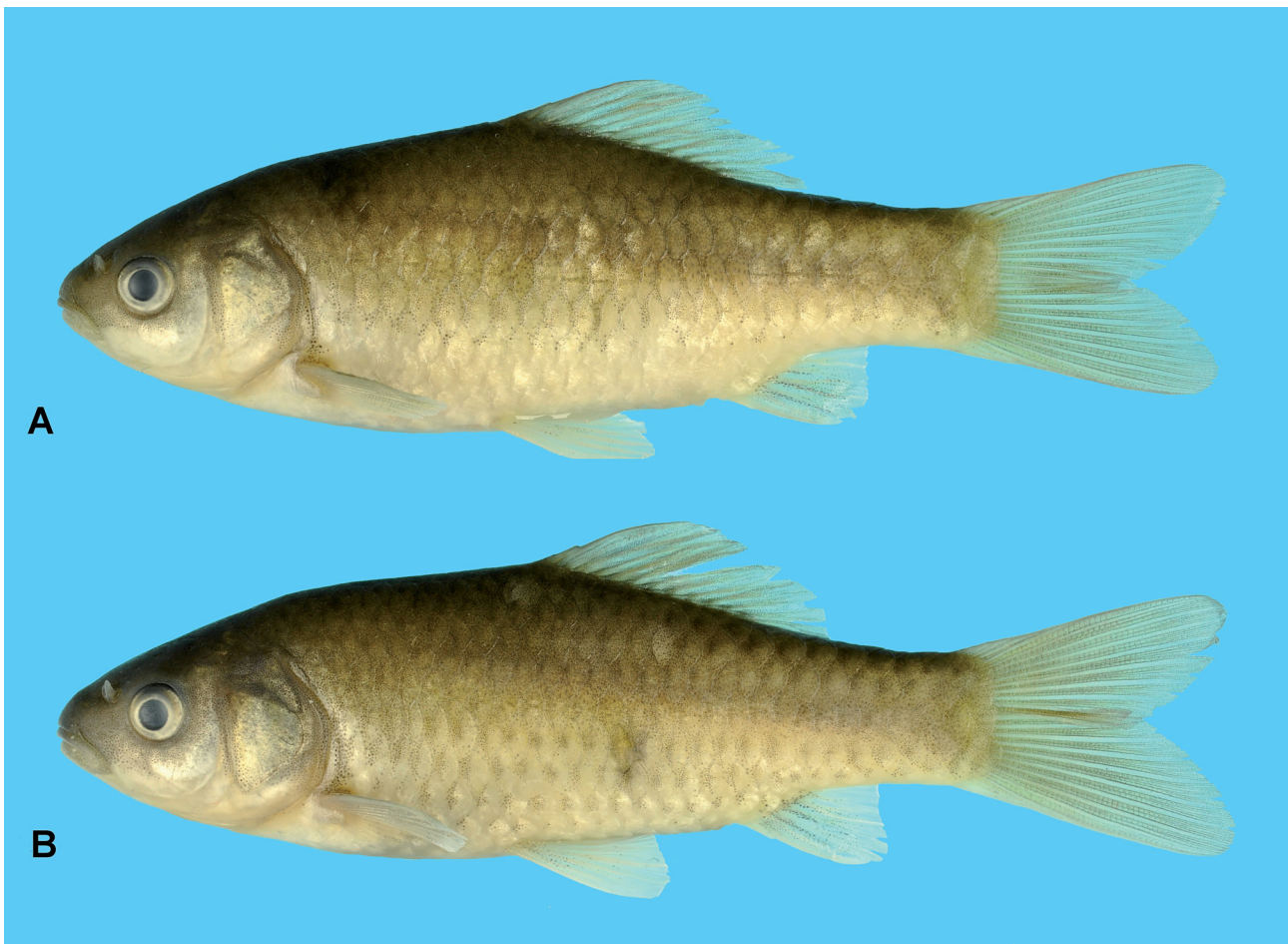


Fig. 1. *Carassius praecipuus*; Laos: Nam Ngum drainage: Nam Chat. (A) MHNG 2767.087, holotype, 55.6 mm SL. (B) CMK 22746, paratype, 62.0 mm SL (reversed).

Fig. 2. *Carassius praecipuus* CMK 22746, paratype, 62.0 mm SL; head (reversed). ▶



straight line to dorsal-fin base, then more or less straight to caudal-fin base. Caudal peduncle 1.3-1.4 times longer than deep. Interorbital area convex. Head longer than deep, dorsal profile straight; ventral profile arched from mouth to pelvic-fin base, then straight to anal-fin origin; snout blunt. Mouth terminal to subterminal, anteriormost point of cleft below level of lower margin of eye, upper lip slightly projecting beyond tip of lower jaw. Lower jaw-quadrangle junction about at vertical of anterior margin of eye. 10+10 (1), 10+11 (4*) or 11+10 (1) = 20-21 gill rakers on first gill arch, their length about 1-1.5 times width of arch and about 3-4 times in length of gill filaments at same position.

Dorsal fin with 4 simple and $9\frac{1}{2}$ (1), $10\frac{1}{2}$ (6*) or $11\frac{1}{2}$ (4) branched rays, second ray longest; last unbranched ray rigid, thick (about 3 times width of branched rays), with 10-16 strong and pointed serrae along posterior edge (number increasing with size); distal margin straight to

slightly convex; origin behind vertical through pelvic-fin origin; dorso-hypural distance reaching between nostril and tip of snout when reported forward from dorsal-fin origin. Pectoral fin rounded, with 15 (4*) or 16 (2) rays (unbranched and branched); reaching between $\frac{2}{3}$ to whole distance to pelvic-fin origin. Pelvic fin rounded, with 8 rays (unbranched and branched); reaching slightly

Table 1. Morphometric data of holotype and 5 paratypes of *Carassius praecipuus*. Range and mean include holotype data.

	holotype	range	mean
Standard length (mm)	55.5	46.9-62.0	
Total length (mm)	70.6	62.0-80.8	
In percent of standard length			
Total length	127.1	127.1-132.1	129.6
Head length	29.4	29.4-32.3	30.9
Predorsal length	52.3	52.3-57.8	56.1
Prepelvic length	49.6	49.6-54.3	51.6
Preanal length	74.8	73.5-77.4	75.6
Head depth	23.7	23.3-24.5	23.9
Body depth (anal-fin origin)	34.1	32.5-35.9	33.6
Depth of caudal peduncle	15.3	14.4-15.3	14.9
Length of caudal peduncle	20.8	19.0-21.3	20.1
Head width	17.4	17.4-20.0	18.5
Mouth width	7.1	6.7-7.8	7.2
Eye diameter	6.8	6.6-7.8	7.0
Snout length	8.9	8.7-10.1	9.4
Interorbital distance	11.6	11.6-13.2	12.6
Length of dorsal spine	12.6	12.6-18.1	15.4
Length of dorsal-fin base	23.3	22.7-24.9	23.9
Length of upper caudal-fin lobe	27.1	27.1-29.2	28.3
Length of median caudal-fin rays	17.2	16.3-18.9	17.7
Length of lower caudal-fin lobe	27.4	27.0-29.8	28.4
Length of anal-fin spine	13.2	11.7-14.4	12.9
Length of pelvic fin	17.9	16.6-19.0	18.1
Length of pectoral fin	19.4	18.3-20.3	19.2
In percent of head length			
Head width	59	57-62	60
Mouth width	24	22-25	23
Eye diameter	23	21-24	23
Snout length	30	27-33	30

beyond halfway to anal-fin base; origin in front of vertical through dorsal-fin origin, origin slightly closer to pectoral-fin origin than to anal-fin origin. Anal fin with 3 unbranched and 5½ branched rays, first longest; last unbranched ray stout, rigid, thick (about 4 times thicker than branched rays), with 12-15 strong and pointed serrae along posterior edge (number increasing with size); distal margin straight; origin behind vertical through base of last dorsal-fin ray. Caudal fin with 9+9 (1) or 9+8 (5*) branched rays; forked, lobes rounded, subequal.

Lateral line complete with 25+1 (1*), 26+1 (3) or 27+1 (2) pored scales. ½5 scale rows between lateral line and dorsal-fin origin; 6½ (1*) or 7½ (5) between lateral line and ventral midline, counted 2 scales in front of pelvic-fin base; 4 (1*), 4½ (1) or 5 (4) between lateral line and pelvic-fin origin; 4 (3*) or 5 (3) between lateral line and anal-fin origin; ½2/1½2 longitudinal scale rows on caudal peduncle; 12 (1*), 13 (4) or 14 (1). A single pelvic axillary scale, small, same shape as adjacent scales.

Coloration: After 6 weeks in formalin. Head and body yellowish brown, darker on back. Top of head dark brown. Belly yellowish white. Scales on dorsal half of flank, covered by densely set dark pigments (melanophores?); with a thin line of smaller ones along posterior edge; pigments more densely-set on scale pockets, making them appear as poorly contrasted crescentic marks. On lower half of body, scales with only a few large pigments, sparsely set, restricted to anterior half of exposed part of scale; number of pigments decreasing ventrally, no pigments on lowermost 2-4 scale rows. Peritoneum dark grey.

Dorsal fin with pigments on all rays and membranes, denser on rays and on posterior half of membranes. Caudal fin with pigments on rays and on membranes between branches (but not on membranes between rays). Anal fin with pigments larger than on other fins, less densely set, mainly on proximal half of membranes between last unbranched and third branched rays. Pelvic

fin with a few pigments, sparsely set on proximal 1/3 of rays and membranes. Pectoral fin with pigments restricted to edges of all rays.

In life and shortly after fixation: yellowish brown.

Distribution: *Carassius praecipuus* has been observed only at the type locality, in the upper Nam Chat in the hills of central Laos (Fig. 3). Security safeguards greatly restricted movement and access to potential additional sampling sites.

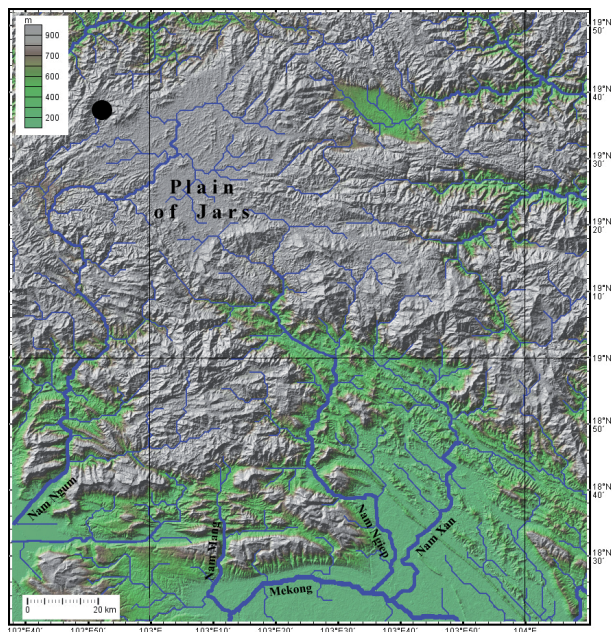


Fig. 3. Laos: the Plain of Jars and the Nam Ngum, Nam Ngiep and Nam Khan drainages, showing the type locality of *Carassius praecipuus*. Shown topography is prior to the construction of the dams.

Habitat and notes on biology: The Nam Chat is a tributary of the Nam Ting, itself a tributary of Nam Ngum, entering it at 19°22'15"N 102°43'22"E. It lies at the northern edge of the Plain of Jars, between the Nam Ngum proper and the Nam Khan, another tributary of the Mekong. The sampling site is in the uppermost course of the Nam Chat, about 5 km from its sources, at 1142 masl. The stream was 2-4 m wide, about 30-50 cm deep, up to about 1 m deep in one of the curves (Fig. 4), with moderate current. The bottom was made of gravel and pebble, with some areas covered by a thin layer of sediments, most likely washed from adjacent fields. The stream is at the bottom of a narrow valley, used for agriculture. The shores are mainly covered by bushes and occasional trees.

Carassius praecipuus was collected mainly in the deepest areas, under the roots of overhanging trees and bushes. No specimen larger than the types were observed; the sampling was done with electricity and

if larger individuals had been present they would probably have been caught. Other fish species present were: *Opsarius pulchellus* (Smith, 1931) (Cyprinidae), *Schistura coruscans* Kottelat, 2000, *S. defectiva* Kottelat, 2000, *S. personata* Kottelat, 2000, *S. quaesita* Kottelat, 2000 (Nemacheilidae), *Oreoglanis* sp. (Sisoridae) and *Rhinogobius mekongianus* (Pellegrin & Fang, 1940) (Gobiidae).

The largest available specimen (62 mm SL) is a female with mainly white oocytes and a few pale yellow eggs about 1.0 mm diameter, likely unripe. The specimens were collected at the end of February and this suggests that they would have been able to spawn a few weeks later in the coming dry season, or at the beginning of the wet season when the stream would flood the adjacent grassland.

Etymology: From the Latin adjective *praecipuus*, *-a, -um*, meaning 'which is not common', allusion to the unexpected presence of a *Carassius* in the Mekong drainage and the very low dorsal-fin ray, lateral line scale and gill-raker counts.

Remarks: The genus *Carassius* occurs naturally from Central Europe to Japan and extends southwards in northern and central Vietnam in the rivers draining to the Gulf of Tonkin. Some species have been cultivated, and especially some of the East Asian species, which have given rise to numerous ornamental varieties, popularly known as goldfishes. Goldfishes and some other species of *Carassius* have been introduced, voluntarily or not, throughout the world and some have proved very damaging pests. *Carassius praecipuus* is the first species of the genus discovered in the Indochinese area (in the zoogeographic meaning; see Kottelat, 1989). A number of characters distinguish *C. praecipuus* from all its congeners and allow to exclude the possibility that it could be a feral population of some cultivated variety accidentally released in the wild (which anyway at the very isolated site would be surprising, although never impossible).

The European and northern Palaearctic species of *Carassius* are described or diagnosed by Berg (1948), Szczerbowski (2002: 7) and Kottelat & Freyhof (2007), the Chinese species by Luo & Chen (2000), the Japanese species by Hosoya (2002) and the Vietnamese species by Nguyen & Ngo (2001). Several meristic characters distinguish *C. praecipuus* from all other species. It has fewer branched dorsal-fin rays (9-11½, vs. 11-21½), fewer lateral line scales (25-27 + 1, vs. 27-36), fewer gill rakers (total 20-21, vs. 23-128). Further, the shorter dorsal fin in *C. praecipuus* is reflected by the more forward end of the base of the fin (in front of a vertical through the origin of the anal fin, vs. behind origin of the anal fin). Based on the literature, some of these meristic values show marginal overlap. The analysis is complicated by the fact that some species of *Carassius* are widely distributed and are of interest for aquaculture and geneticists; the

use of contradictory and sometimes incoherent species concepts, and the non-understanding of the implications of the concepts used, has blurred the taxonomy of the group and makes it difficult to know how many species really exist and how much of the identifications under the same name in different countries are really conspecific. I will focus here only on the populations showing meristic features whose values overlap with the ranges observed in *C. praecipuus*.

A further recurrent problem is that it is not always clear how the different authors obtained some of the counts. Differences exist in the way of counting the last two dorsal-fin rays that articulate on the same pterygiophore. Some authors count them as a single ray, others as two rays; I note them as '1½', a notation that removes ambiguity and also indicates that the author is aware of this issue. Similarly, different authors have reported lateral line scale counts in different ways, including or not the scales on the base of the caudal fin. They are here given separately (e.g. 26+1); again, this notation removes the ambiguity in showing that the author is aware of the issue. In the literature, in many instances, it is not clear if a count indicated as 26 means 24+2, 25+1 or 26+x. There are also instances of authors referring to a method but in fact using another one.

Whichever way they are counted, there are only few literature records of branched dorsal-fin ray counts of 11 or 12. A single species shows overlap with *C. praecipuus*. Hosoya (2002: 254) reports from a small area of Honshu island (Japan) an unnamed "*C. auratus* subsp. 2", which

has 11-14 (= 11-14½ in my notation; explained p. xxxv). This "*C. auratus* subsp. 2" also has some overlap with *C. praecipuus* in lateral line scale count, with 26-30 scales on the body (method explained p. xxxi). However, *C. praecipuus* is distinguished in having 20-21 gill rakers on the first gill arch (vs. 30-38) and the origin of the anal fin is behind a vertical through the base of the last dorsal-fin ray (vs. under dorsal-fin base). It is noteworthy that "*C. auratus* subsp. 2" also has a small size (up to 150 mm SL).

Szczerbowski (2002: 7) compiled a list of counts from the literature for *C. gibelio* (Bloch, 1782). The cumulated variation is 12-19 (apparently =12-19½ in my notation); 12 is reported only in the range 12-18 for a population from Yakutia. Noteworthy is that this Yakutia sample also has the lowest reported lateral line scale count, with 27-35 scales, while others have 28-33. The count supposedly includes the scales on the caudal-fin base (see below) but one cannot be certain since this is a compilation from disparate sources. The reported range of variability of the counts in this Yakutia population is very wide and makes the data suspicious. A variability range of 7 rays for a population with an average 15 rays is something otherwise unknown in cyprinid fishes in which the usual range in species with short dorsal fin would be 2-3 rays (and often no variability); this suggests a serious problem and poor reliability. In any case, *C. praecipuus* is distinguished from *C. gibelio* in having 20-21 gill rakers on the first gill arch (vs. 35-54) and a much smaller size (largest known specimen 62 mm SL, vs. 350 mm



Fig. 4. Nam Chat upstream of Ban Houay Sod, Xiangkhouang Province, Laos, 1142 masl; 29 February 2012. Type locality of *Carasius praecipuus*. Most specimens were obtained in the pool at the rear.

SL). *Carassius gibelio* is a species present from eastern Europe to northeastern China, which possibly includes several species and hybrids and presents a number of taxonomic problems (Kottelat & Freyhof, 2007: 145; Kalous *et al.*, 2012).

Lateral line scale counts of 26 and 27 have been reported for *C. auratus* in the literature as the extreme of a range of 26-31. This is again in a table compiled in Szczerbowski (2002: 7), who supposedly included the pored scales on the caudal-fin base (as most eastern European authors). For the same species, 27-30 scales are reported by Luo & Chen (2000: 430), who supposedly included only the scales on the body (as most Chinese authors). *C. praecipuus* is distinguished in having 9-11½ branched dorsal-fin rays (vs. 13-19½ in *C. auratus*), 20-21 gill rakers on the first gill arch (vs. 37-47), and the origin of the anal fin is behind a vertical through the base of the last dorsal-fin ray (vs. under dorsal-fin base).

A single other species of *Carassius* has been reported from Laos, from the Nam Ma drainage, a river entering Laos from and returning to Vietnam and entering the Gulf of Tonkin near Thanh Hoa. The species has been identified as *C. auratus* (Kottelat, 2001: 42), which may or may not be correct, and may be native or introduced or invasive. In any case, *C. praecipuus* is distinguished from these specimens in having a more slender appearance (compare Figures 1 and 5), a yellowish brown body coloration (vs. golden in life, greyish when preserved), fewer branched dorsal-fin rays (9-11½, vs. 15-18½), the distal margin of the dorsal fin straight to convex (vs. concave to straight), fewer lateral line scales (25-27 + 1, vs. 27-28 + 2), fewer longitudinal scale rows on the caudal peduncle (½2/1½2, vs. ½3/1½3), the anal-fin origin behind the base of the last branched dorsal-fin ray (vs. under branched ray 13-14 [or 2-4 when counted from posterior extremity of fin]), strong and pointed serrae

along the posterior edge of the last unbranched dorsal- and anal-fin rays (vs. short and blunt); fewer and shorter gill rakers on the first gill arch (20-21, length about 1-1.5 times width of arch and about 3-4 times in length of gill filaments at same position; vs. about 34 gill rakers in one dissected specimen, about 3-4 times wider than arch and about 2 times in length of gill filaments).

Carassius is a genus typical of the East Asian Subregion of the Oriental Region (*sensu* Kottelat, 1989: 34; of Sino-Indian Region *sensu* Bănărescu, 1992) and its presence in the Mekong drainage (Indochinese District, Southeast Asian Subregion, Oriental Region, *sensu* Kottelat, 1989: 34; South Asian Subregion of Banarescu, 1989) is unexpected. Nevertheless, it is not too surprising. The Nam Chat is adjacent to the Plain of Jars and to the Nam Ngum proper at the south. The Nam Ngum, Nam Ngiep and Nam Neun have headwaters on the Plain of Jars where they are separated only by very low divides. The Nam Ngum and Nam Ngiep are tributaries of the Mekong while the Nam Neun flows to the east to Vietnam and the Gulf of Tonkin, which it enters near Vinh. A few species or genera typical of the East Asian fauna are present in the Mekong tributaries on the Plain of Jars [*Opsariichthys hainanensis* Nichols & Pope, 1927, *Vanmanenia* sp., *Rhinogobius milleri* Chen & Kottelat, 2003, *Macropodus opercularis* (Linnaeus, 1758)] (Kottelat, 2017). The species is possibly also present in head waters of the Nam Khan (the next watershed to the north) and of the Nam Neun.

ACKNOWLEDGMENTS

The material of the new species was obtained during a survey conducted in connection with an Environmental Impact Assessment of the Nam Ngum 3 hydropower project. It is a pleasure to thank François Obein for



Fig. 5. *Carassius auratus*, CMK 25714, 68.4 mm SL; Laos: Houaphan Province: Nam Ma drainage.

organising the work and the logistics, Bounma Luang Amath (Department of Livestock and Fisheries) and Thavone Phommavong (Living Aquatic Resources Research Center) for their invaluable help in the field. The comments of an anonymous reviewer are greatly appreciated.

REFERENCES

- Bănărescu P. 1992. Zoogeography of fresh waters. Volume 2. Distribution and dispersal of freshwater animals in North America and Eurasia. *Aula, Wiesbaden*, pp. 519-1091.
- Berg L.S. 1948-1949a. [Freshwater fishes of the U. S. S. R. and adjacent countries]. *Izdatelstvo Akademii Nauk SSSR, Moskva & Leningrad*, vol. 1 (1948): 1-466, vol. 2 (1949): 467-926, vol. 3 (1949): 927-1382, 1 map. [Translation: *Israel Program for Scientific Translations, Jerusalem, 1965*, 1: vi+504 pp., 2: vi+496 pp., 3:vi+510 pp.].
- Hosoya K. 2002. Cyprinidae [pp. 253-271]. In: Nakabo T. (ed.). Fishes of Japan with pictorial keys to the species, English edition. *Tokai University Press, Tokyo*, 2 vols, 1: I-LXI + 1-866, 2: I-VIII + 867-1749.
- Kalous L., Bohlen J., Rylková K., Petrtýl M. 2012. Hidden diversity within the Prussian carp and designation of a neotype for *Carassius gibelio* (Teleostei: Cyprinidae). *Ichthyological Exploration of Freshwaters* 23(1): 11-18.
- Kottelat M. 1989. Zoogeography of the fishes from Indochinese inland waters with an annotated check-list. *Bulletin Zoologisch Museum Universiteit van Amsterdam* 12(1): 1-54.
- Kottelat M. 2001. Fishes of Laos. *Wildlife Heritage Trust, Colombo*, 198 pp.
- Kottelat M. 2017. *Vanmanenia orcicampus*, a new species of loach from the Plain of Jars, Laos (Teleostei: Gastromyzontidae). *Ichthyological Exploration of Freshwaters*, 28 (in press).
- Kottelat M., Freyhof J. 2007. Handbook of European freshwater fishes. *Kottelat, Cornol & Freyhof, Berlin*, XIV + 646 pp.
- Luo Y.L., Chen Y.Y. 2000. [Cyprininae] [pp. 391-433]. In: Yue P.Q. (ed.). [Fauna Sinica. Osteichthyes. Cypriniformes III]. *Science Press, Beijing*, V+653 pp. [In Chinese, English summary].
- Nguyen V.H., Ngo S.V. 2001. Cá nước ngọt Việt Nam. Tập I. Hồ cá chép (Cyprinidae) [Freshwater fishes of Vietnam. Volume 1. Carp family (Cyprinidae)]. *Nhà Xuất Bản Nông Nghiệp [Agriculture Publishing House], Hanoi*, 622 pp. [In Vietnamese].
- Szczerbowski J.A. 2002. *Carassius auratus* (Linnaeus, 1758) [pp. 5-41]. In: Bănărescu P.M., Paepke H.-J. (eds), The freshwater fishes of Europe. Vol. 5/III. Cyprinidae 2. Part III: *Carassius* to *Cyprinus*. Gasterosteidae. *Aula, Wiesbaden*, XIV + 506 pp.