

Wenchi Crater Lake

Oromia Region, Ethiopia

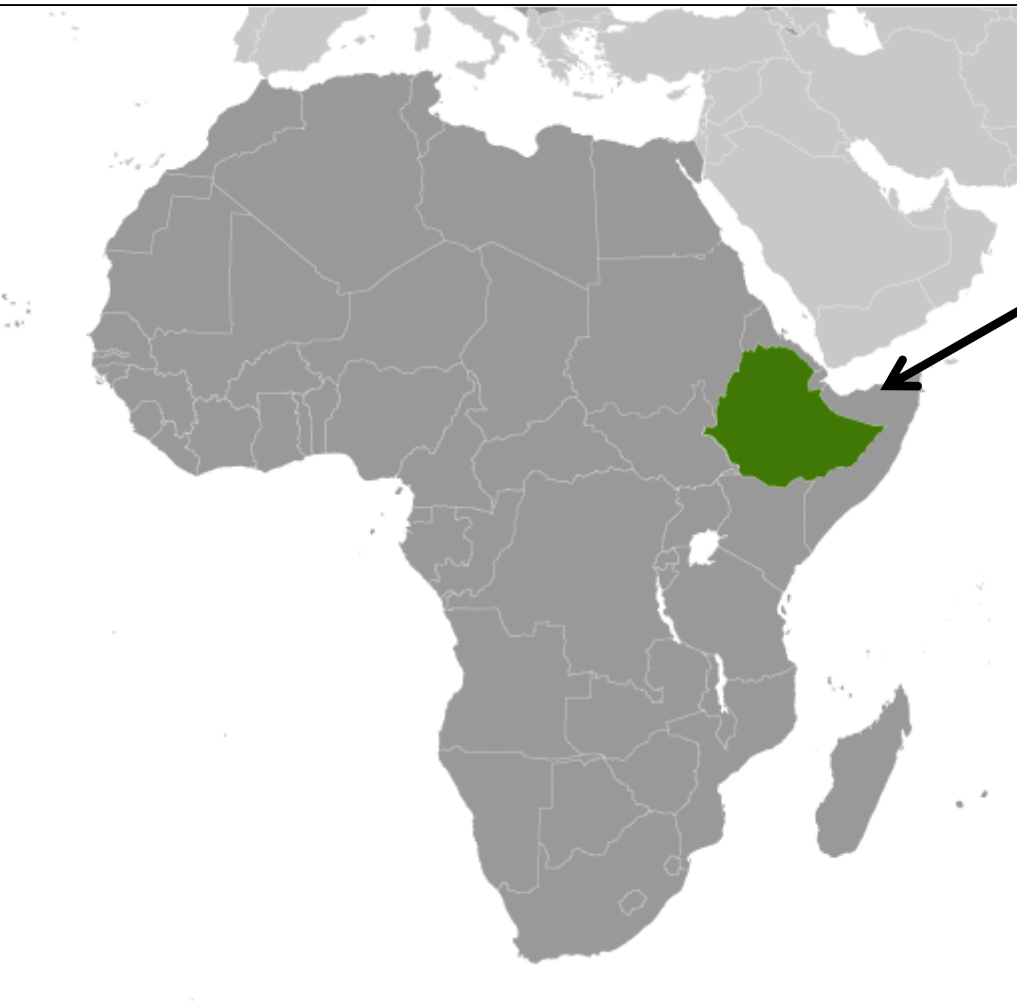
Borsa Italiana Turismo Associativo e Cooperativo (BITAC)

Trento, 4th of December 2019



WENCHI
ECO-TOURISM
ASSOCIATION

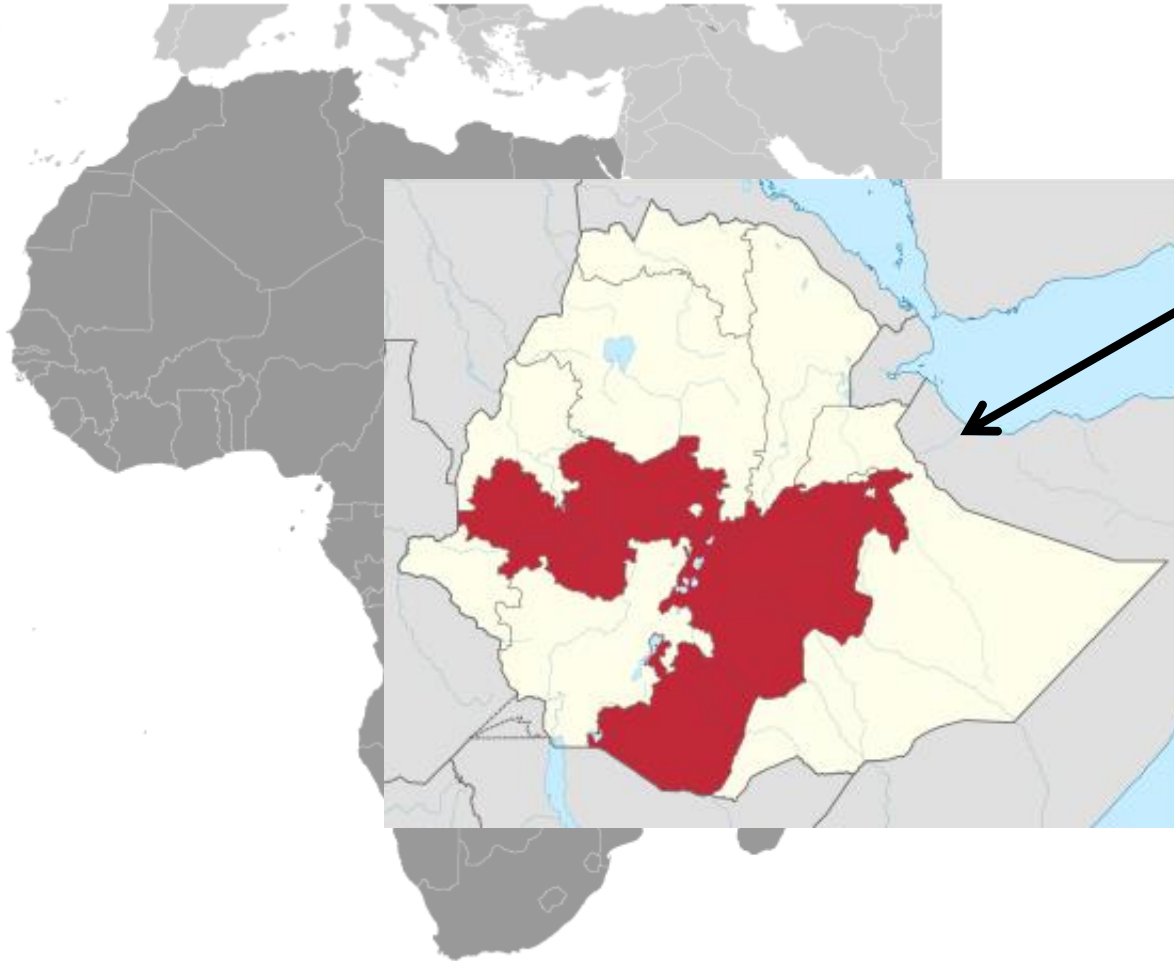
General Information



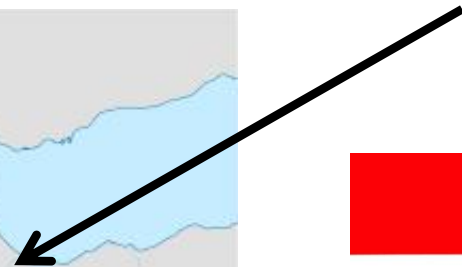
ETHIOPIA



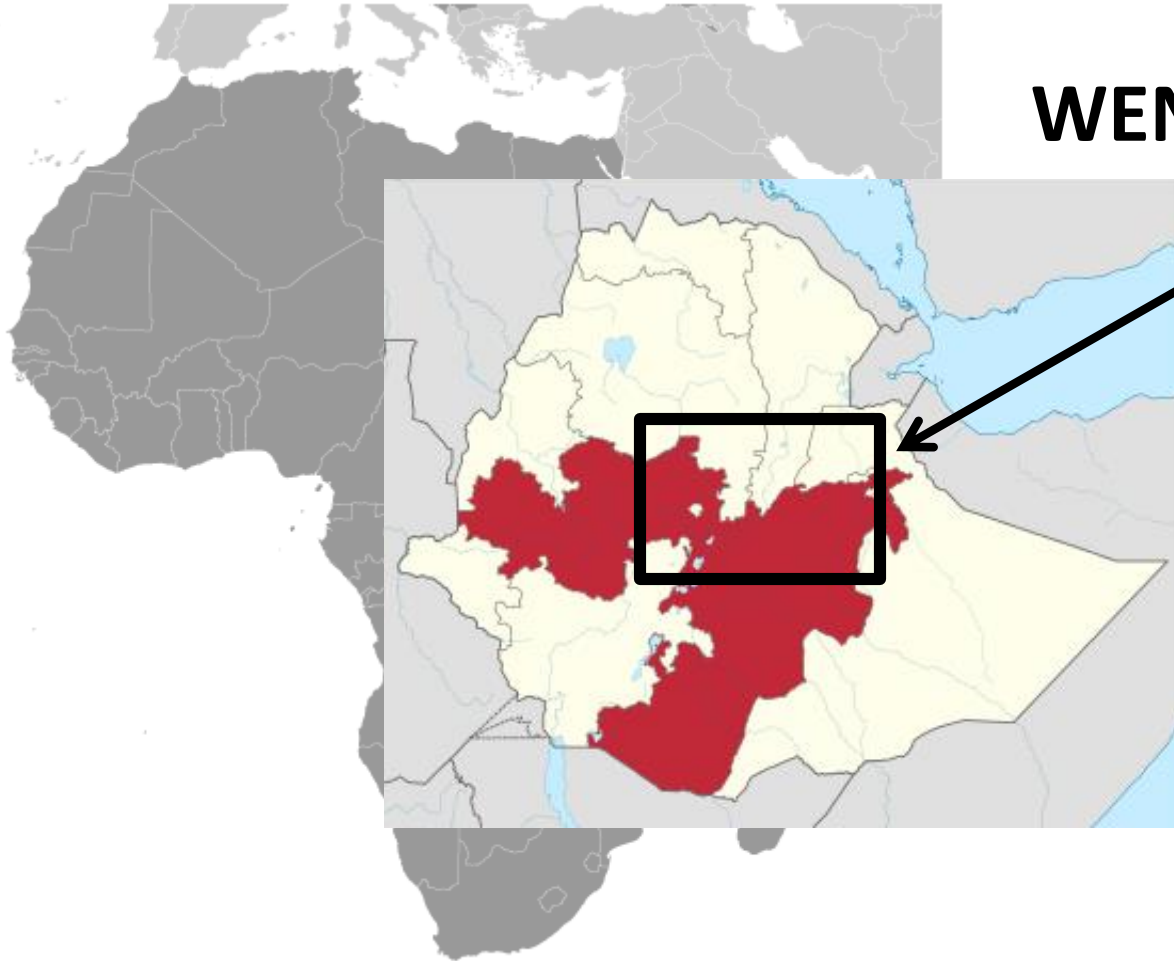
General Information



OROMIA REGION



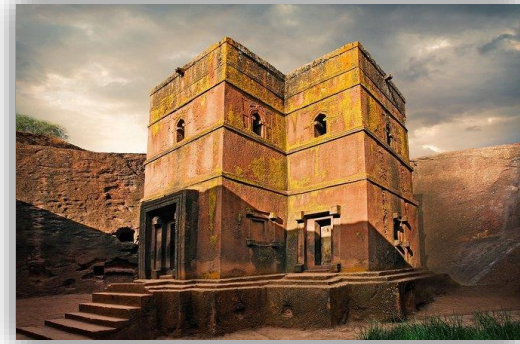
General Information



WENCHICRATER LAKE



Tourist Destinations in Ethiopia



The main tourist destinations in Ethiopia are found on 4 routes:

- Northern Route (Lalibela, Axum, Gondar)
- Southern Route (Arba Minch, Omo Valley)
- Eastern Route (Erta Ale, Dallol)
- Western Route (Wenchi Crater Lake)



Wenchi crater lake

Wenchi lake is located in Oromia region, Western side of Ethiopia, **150 km far from the capital city** Addis Ababa.

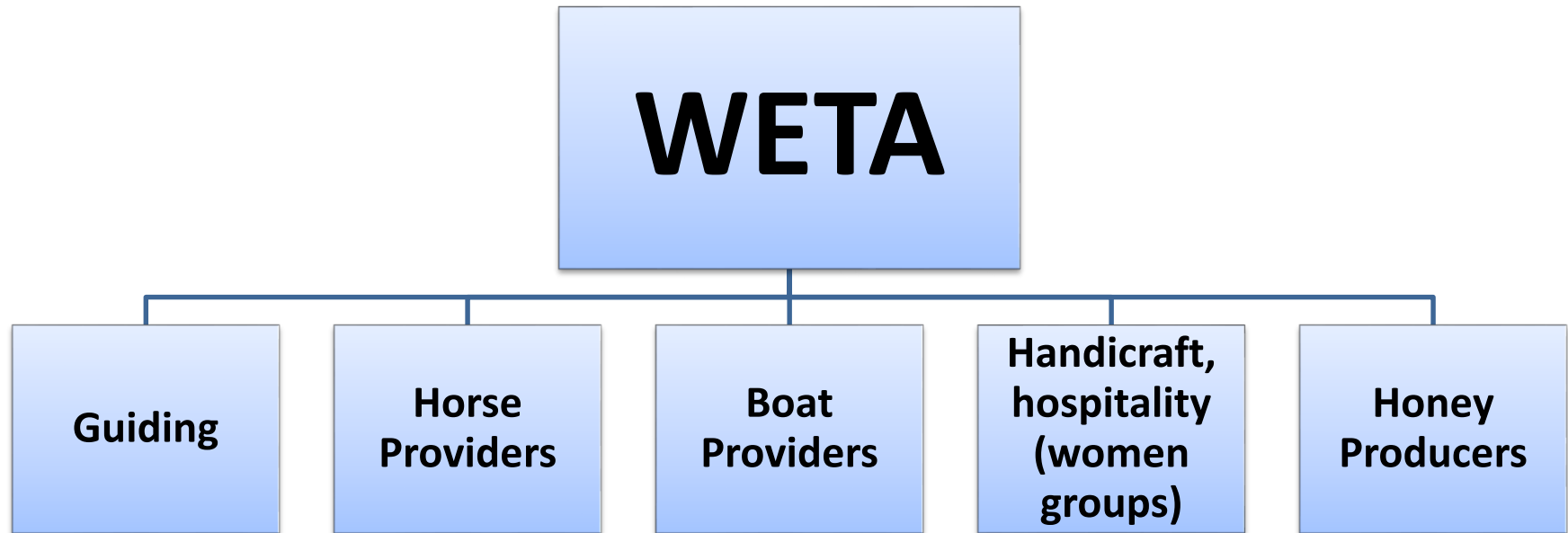
It is a Crater Lake found in the Ethiopian highlands at an altitude of about **3000 masl**.

The beautiful landscapes are characterized by **green mountains** surrounding the **lake, valleys, springs, waterfalls, forests, cultivated lands**.

Several animals and plants lives here, thanks to its natural resources conserved against over exploitation.



Wenchi Eco-Tourism Association



- **Community Based organization**
- **Member of International Cooperative Alliance (ICA)**
- **330 members**

- **Natural resource management**
- **Community support**
- **Tourism Development and promotion**

Wenchi Eco-Tourism Association

Tourism in the Wenchi area is managed by the cooperative **Wenchi Eco-Tourism Association (WETA)**, that is responsible for the **activities** proposed to the tourists, the **hospitality** and the **natural resources management**.



Wenchi crater lake project

WETA is the main partner in a international cooperation project funded by the **Italian Agency for Development Cooperation (AICS)**. The implementation is carried on by **COOPI** – Cooperazione Internazionale, an **Italian NGO** founded in Milan in 1965, and Italian Association for Responsible Tourism – **AITR**, founded in 1998.



**WENCHI
ECO-TOURISM
ASSOCIATION**



The project intervention

The project is implemented in collaboration with local authorities, and local communities, with a duration of 25 month

4 main intervention sectors:

- **Enhanced water access** through functioning and sustainable distribution system;
- Improved **water resource management, health and hygiene awareness**;
- Improved organization and management of services related to the **development of an eco-friendly, sustainable and responsible tourism**, in respect of the environment, culture of local community and economy;
- Developed/rehabilitated **family based infrastructure** aimed at welcoming tourists and improving personal health and hygiene.



Tourism Intervention

Tukul construction for local handicraft/products promotion, museum, close to tourist information center (under construction)



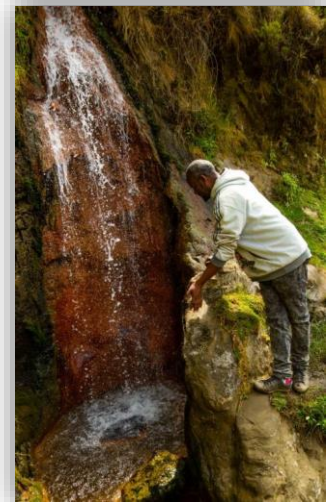
Rest points on hiking trails all around the crater lake (under construction);

Eco-san latrines (under construction);



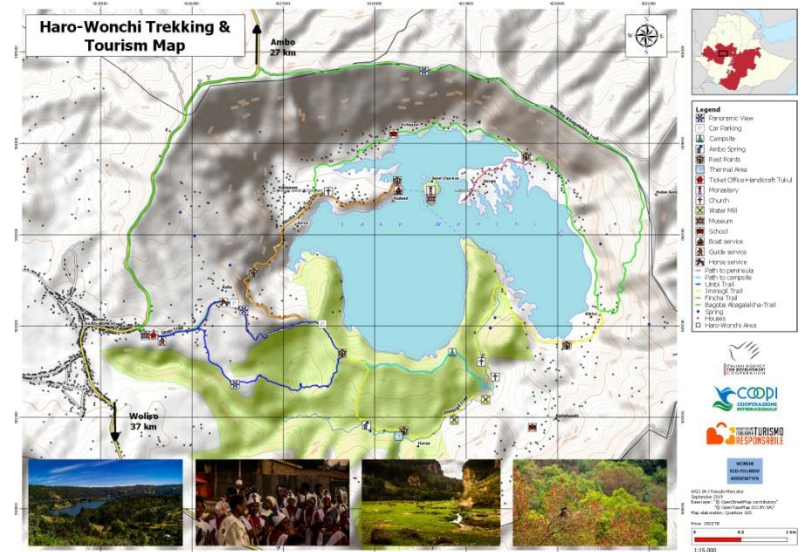
Tourism Intervention

- **Camping site** improved with tent pitches, toilets, local fencing;
- **Thermal area development** with changing room, to improve the thermal experience;
- **Community based hospitality** and small business development through revolving fund (saving and credit cooperative under WETA);



Tourism Intervention

- Rehabilitation of hiking trails, signage and information improvement;
- Tourist map;
- Tourist guidebook.



Conclusion

The project aim to achieve the real **improvement of the community based tourism management**, the **environmental conservation** and the **living conditions** of the local population around the crater. **WETA** aims to become an **exemplar** Destination Management Organization for the **tourism services in Ethiopia**.





Miressa Hailemeskel Ijo

Wenchi Eco-Tourism Association Secretary

CONTACTS:

E-mail: miressahailemeskelijo@gmail.com
weta.wenchi@gmail.com

Mobile phone: +251 91 065 2023