

The ASUG logo is rendered in a bold, black, sans-serif font. The letters 'a', 's', and 'u' are lowercase, while 'G' is uppercase. The 'a' and 's' are connected, and the 'u' and 'G' are connected. The background of the slide is a faded, light-colored image of a modern office with people working at desks and in a meeting area.

ASUG

Americas' SAP Users' Group

EWM Mobile Options



AGENDA

01



Introduction

02



EWM Mobile Options

03



nxEWM Advantages

04



Customer Stories

05



Q & A



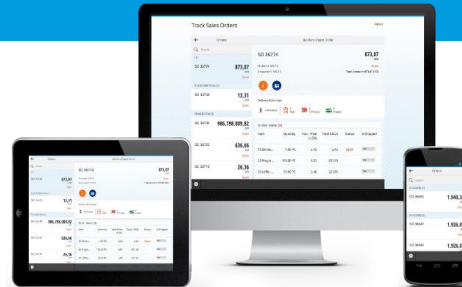
ITSMOBILE

- Limited device compatibility
- Limited UI capability and appearance
- Limited platform compatibility
- Requires more configuration and management for mobile data screens than Fiori
- Limited security options
- Does not have 2-factor authentication



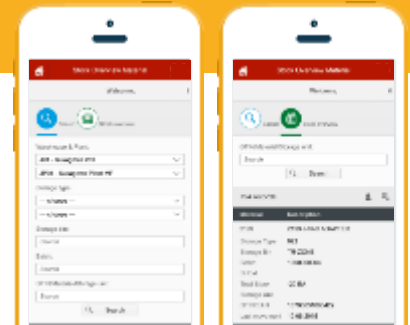
SAP FIORI

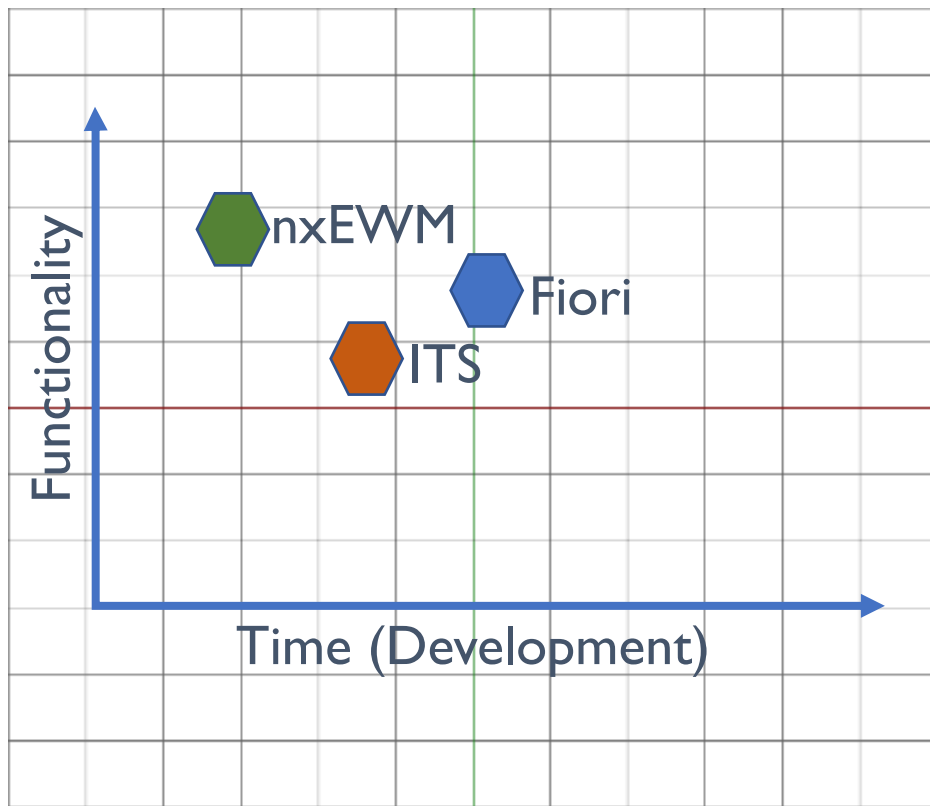
- Difficult to implement offline
- SAP Fiori Library
 - Mobile: Only 21% of apps
- Costly development
- Requires high-skilled front-end and back-end resources
- Additional hardware and maintenance
- License cost to use Fiori Dev Platform (SAP Web IDE)



nxEWM

- Easy to implement offline
- Reduced dev cost/faster
- **Any back-end/same UI**
- No gateway/oData maintenance required
- Leverages ABAP developers
 - Removes 90% JS
- Integration w/ Adobe Build (Hybrid apps)
- Integration w/ SMP (Rest APIs, on-premise and cloud)
- Free templates
- Network crunching





- nxEWM is a fully developed, out of the box solution that mobilizes end to end EWM & RF Processes.
- ITSMobile is a legacy screen emulator that provides browser-based access to SAP transactions. Template screens are currently available however these do not cover 100% of EWM processes.
- SAP Fiori apps library currently does not contain any EWM apps built to run on mobile devices, however clients can build applications from scratch.



SAP Fiori Library screenshot showing 11949 apps. A blue arrow points from the 'Apps (11949)' header to the list of applications.

- Actual Cash Flow
- Analytical List Page for Technical Object Breakdown Analysis
- Approve Closing Tasks
- Approve Master Data - Extended
- Cash Flow Analyzer
- Change Process Analysis for Business Partner
- Change Process Analysis for Product
- Characteristic Analytics
- Characteristic Detailed Analytics
- Chemical Inventory Reporting

All apps in Fiori Library

SAP Fiori Library screenshot showing 31 apps. A blue arrow points from the 'Apps (31)' header to the list of applications. The list is filtered by 'Required Back-End Product (SAP Extended Warehouse Management)'.

- Create Inbound Delivery
- Pick by Cart
- Run Outbound Process - Deliveries

Other SAP Fiori Apps

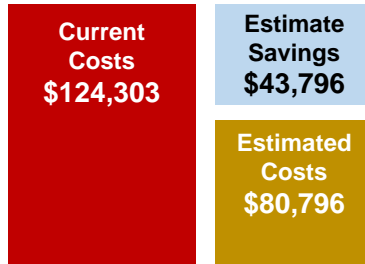
- Average Goods Issue Delay Time
- Avg. Wait Time in Yrd
- Change Inbound Delivery / Change Inbound Delivery.
- Deliv. GR Completion Outstanding
- Deliv. Itm Putawy Compl.

All EWM apps

SAP Fiori Library screenshot showing 0 apps. A blue arrow points from the 'Apps (0)' header to the search results. The results are filtered by 'Form Factor (1), Product Version (1)' and show 'No apps found'.

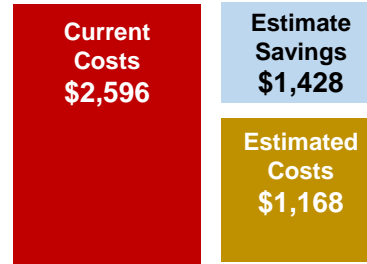
All EWM apps for Phone / Mobile Device





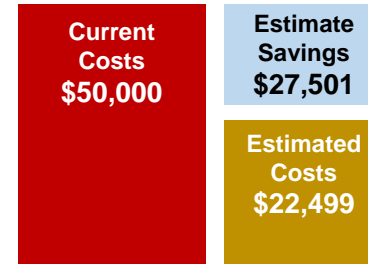
UX Impact on Productivity

Annual Salary: \$50k
Full cost per employee
Task Completion Time: 5
In Minutes
Task Repetition per day: 200
For all employees



UX Impact on Training

Training Hours per year : 20
Spent by Trainers
Training Hours per year : 20
Spent by participants
Training Costs per Hour: \$100



UX Impact on Data Quality

IT Support tickets: 500
Per year
Cost per ticket: \$50
Data errors: 500
Cost per error correction: \$50

+ Device Cost Savings (\$1000/Device)

In 'Order Confirmation' Scenario you could save an estimated

\$76,936 annually



PERFORMANCE



Faster performance due to seamless connection

END TO END



Mobilize every step of EWM/RF process

PROCESS AUTOMATION

Less steps, screens & clicks lead to major efficiency boosts

EWM EXPERTS



Deep expertise to harmonize global warehouse operations

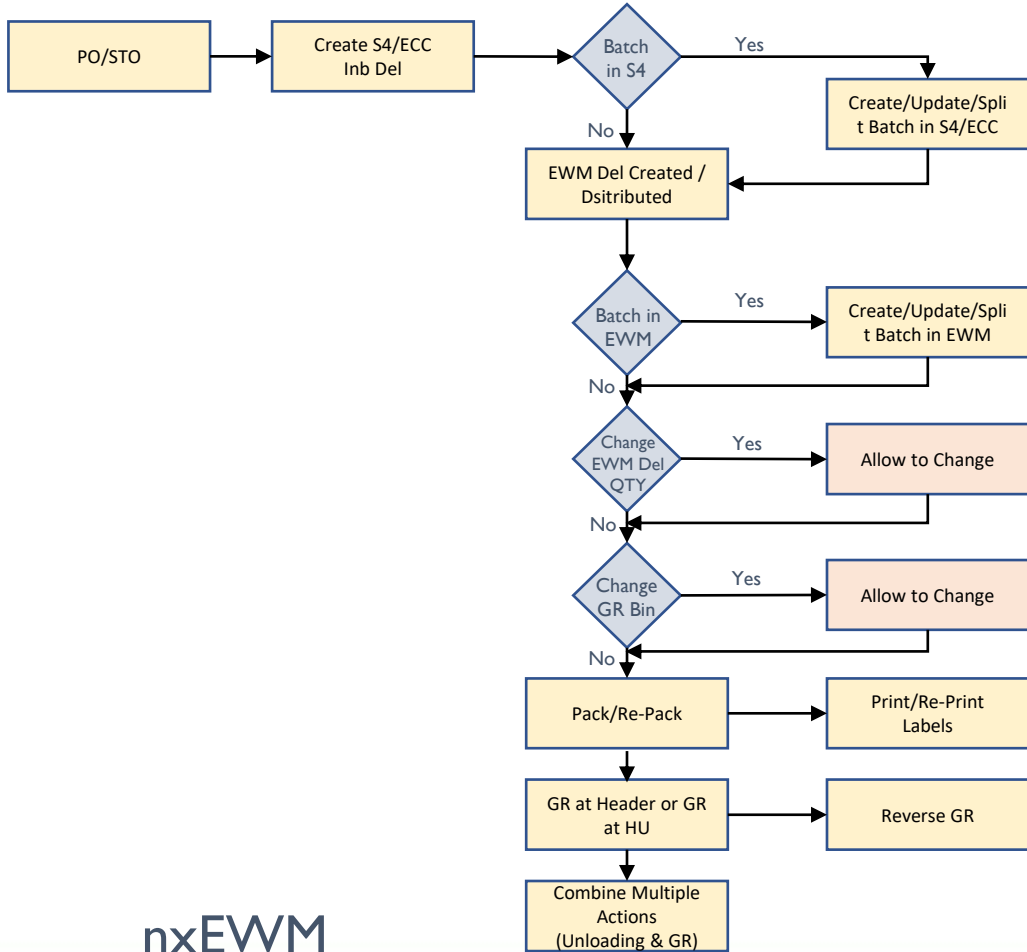
FEATURES



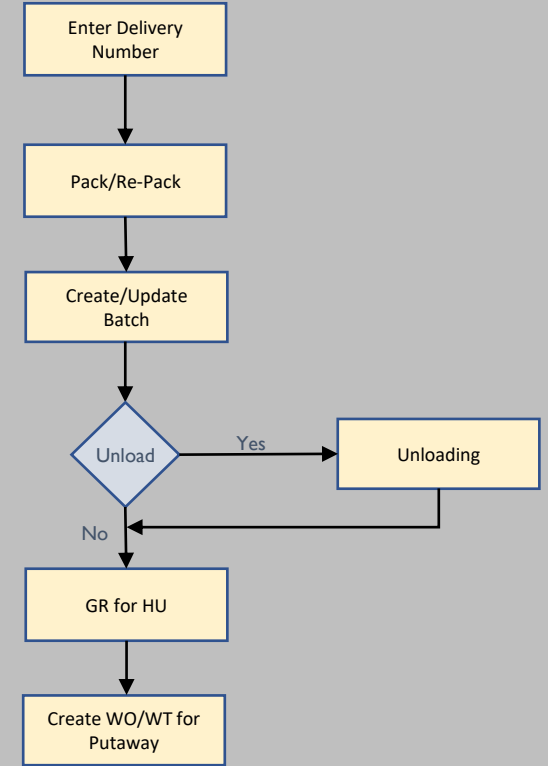
Manage PDFs, digital signatures, scroll bar & more

TRAINING

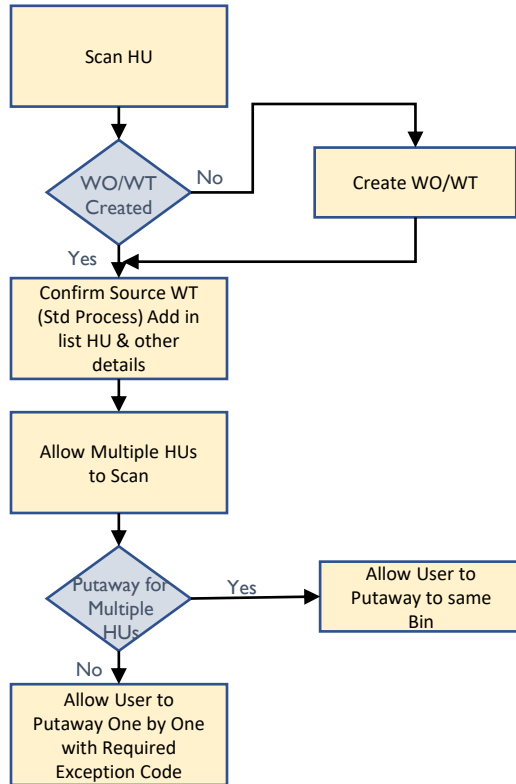
Intuitive design eliminates more than 90% training



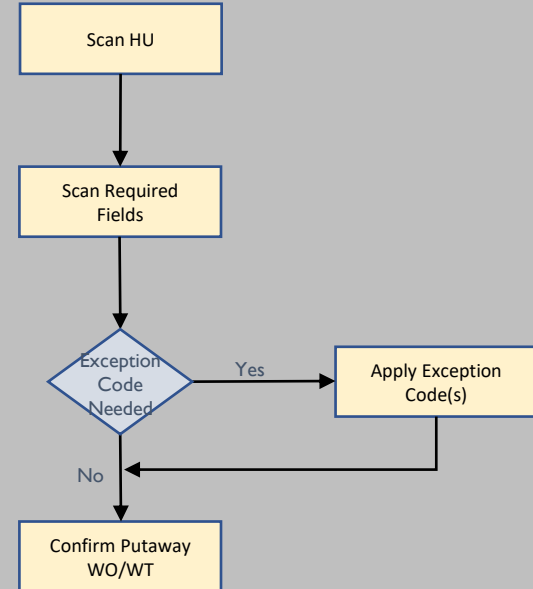
nxEWM



ITSMobile

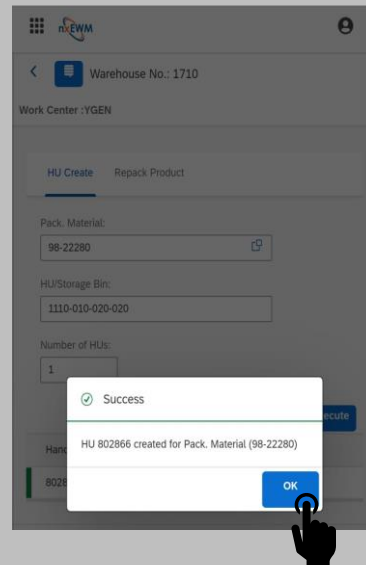
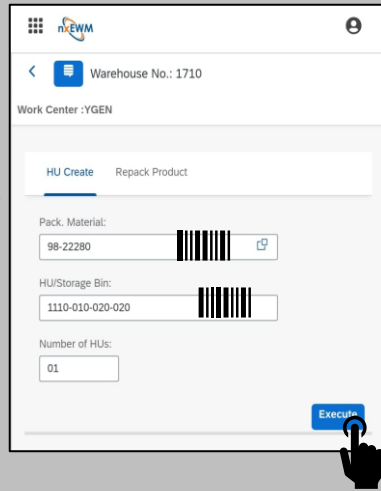


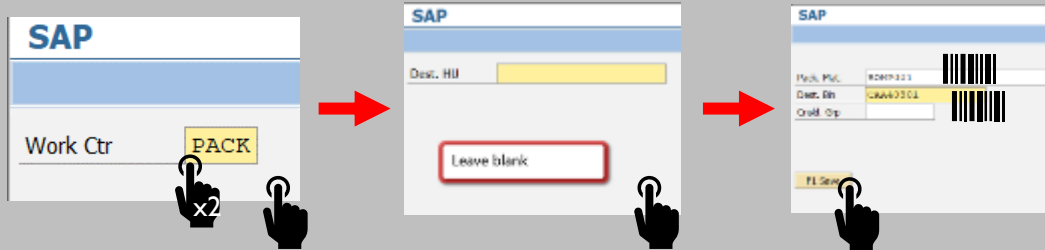
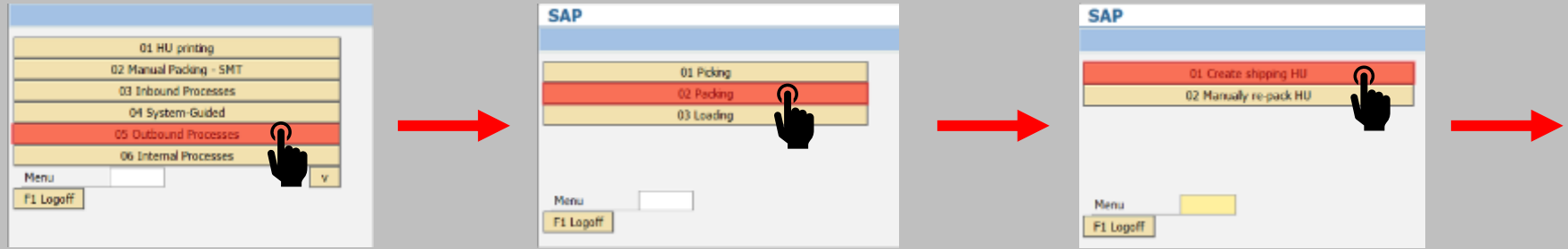
nxEWM



Can only work on 1 HU at a time

ITSMobile





6 screens
2 scans
8 clicks



Receiving

Selected Warehouse: NW1

Purchase Order
 Inbound Delivery

*Purchase Order No.
462000207

Ok Clear

Stock PO

Vendor: 300003 Thermo Fisher Scientific Bioscience
Created By / On: VPULI / 11/23/2020
Company Code / Purchase Org: 1000 / 1000

*Document Date: Nov 23, 2020

✓ Purchase Order Items (1)

<input checked="" type="checkbox"/>	Material	Open Quantity	Received Quantity	Batch
<input checked="" type="checkbox"/>	10054 REPO, 100ML	100 EA	50 EA	1005420319

✓ EWM Deliveries (0)
No EWM Deliveries Exist

Create Delivery (1)

Stock PO

Vendor: 300003 Thermo Fisher Scientific Bioscience
Created By / On: VPULI / 11/23/2020
Company Code / Purchase Org: 1000 / 1000

*Document Date: Nov 23, 2020

Confirmation
Create delivery for selected items?

Yes No

<input checked="" type="checkbox"/>	Material	Open Quantity	Received Quantity	Batch
<input checked="" type="checkbox"/>	10054 REPO, 100ML	100 EA	50 EA	1005420319

✓ EWM Deliveries (0)
No EWM Deliveries Exist

Create Delivery (1)

Stock PO

Created By / On: VPULI / 11/23/2020
Company Code / Purchase Org: 1000 / 1000

*Document Date: Nov 23, 2020

✓ Purchase Order Items (1)

<input type="checkbox"/>	Material	Open Quantity	Received Quantity	Batch
<input type="checkbox"/>	10054 REPO, 100ML	100 EA	EA	Create Batch

✓ EWM Deliveries (1)

180000774
Goods Receipt: Not Started

Create Delivery (0)

180000774

Warehouse No.
Purchase Order: 4620000207

✓ Delivery Items (1)

Item: 10
Product: 10054
Packed Qty: 0 ML
Open Qty: 5000 ML
Batch: 1005420319

✓ Handling Units (0)
No HUs created for this delivery

Unload / Goods Receipt

Does NOT exist in ITS



The sequence of screens is as follows:

- Stock PO:** Shows document details for PO 180000774, including creation date (Nov 23, 2020) and purchase order information. A hand icon points to the 'Create Delivery (0)' button.
- Delivery Items:** Shows details for the selected delivery item (Item: 10, Product: 10054, Open Qty: 5000 ML). A hand icon points to the 'Unload / Goods Receipt' button.
- Create HU and Pack:** A modal screen for creating a handling unit. It includes fields for Delivery (180000774), Item (10), Product (10054), and Open Qty (0 ML). A hand icon points to the 'Pack and Save' button.
- Delivery Items:** Shows the updated delivery item with a quantity of 5,000 ML. A hand icon points to the 'Unload / Goods Receipt' button.
- Confirmation Dialog:** A dialog box asking 'Unloading / Goods Receipt for this delivery?' with 'Yes' and 'No' options. A hand icon points to the 'Yes' button.

5 screens
1 scan
6 clicks



01 System-Guided
02 Manual Selection
03 Inbound Processes
04 Outbound Processes
05 Internal Processes

Menu:

F1 Logoff

01 Unloading
02 Deconsolidation
03 Putaway
04 Receiving of Handling Units

Menu:

F1 Logoff

01 Rec. HU by Delivery
02 Rec. HU by Shipment
03 Rec. HU by TU
04 Rec. HU by ASN
05 Rec. HU by Door
06 Rec. HU by Manufacturing Order

Menu:

F1 Logoff

Delivery:

HU:

Proc. HUs: 0 / 63

F1 List **F2 NewHU** F3 MulHU

HU:

Prod.: 2750

SOYBEAN OIL

ActQty: 63 LB

Batch: TEST1234

BBD:

F1 Next

HU:

Prod.: 2750

SOYBEAN OIL

ActQty: 63 LB

Batch: TEST1234

BBD: 08/30/2022

F1 Next

Delivery: 180000645

HU:

Orig PMat.: HTyp:

New PMat.: **PM-PALLET-WOOD** HTyp: ZPA2

F1 Next

Delivery: 180000570

HU: 313000006272 HTyp: ZPA2

PkMt: PM-PALLET-WOOD SN

Pro.: 2750 ItmN: 10

SOYBEAN OIL

SQty: 1,600 LB Btch: TEST2468

STyp: F2 PTyp: Y114 GmbBin: GR-ZONE

F1 ChQty F2 ChPm

Delivery: 180000570

HU: 313000006272

Pack. Mat.: PM-PALLET-WOOD

Unloaded:

GR Posted:

WT Created:

F1 UnLo F2 PGr F3 CrWT F4 Conf

Delivery: 180000570

HU: 313000006272

Pack. Mat.: PM-PALLET-WOOD

Unloaded:

GR Posted:

WT Created:

F1 UnLo **F2 PGr** F3 CrWT F4 Conf

Delivery: 180000570

HU: 313000006272

Pack. Mat.: PM-PALLET-WOOD

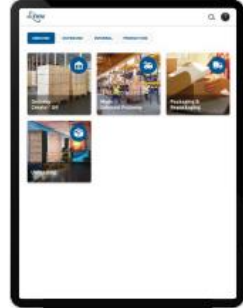
Unloaded:

GR Posted:

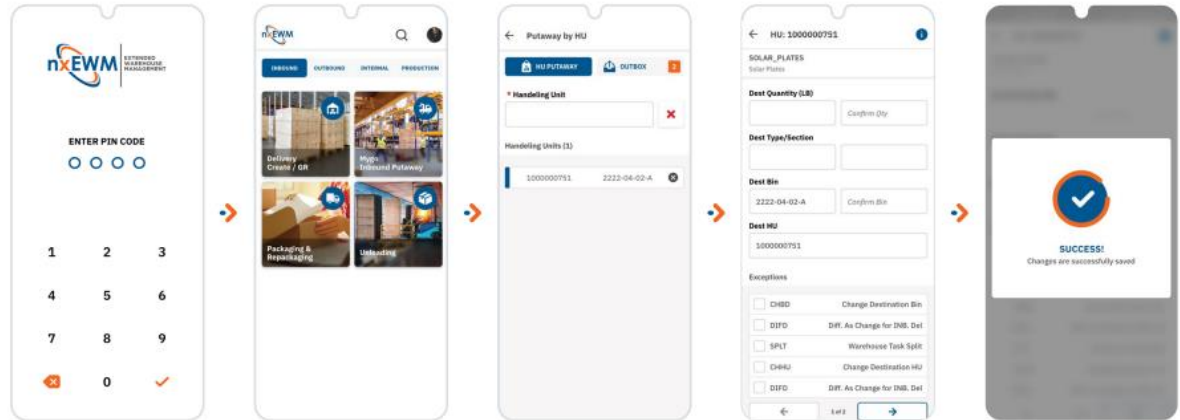
WT Created:

F1 UnLo F2 PGr **F3 CrWT** F4 Conf

12 screens
6 scans
9 clicks



- End-to-end EWM/RF Process
- Offline Functionality
- Responsive Design
- Native Device Functionality
- Deployment Model Agnostic
- Lightspeed Implementation





- IM to EWM
- Paper to paperless (mobile)
- Designed Inbound, Outbound & Internal processes
- Batch Management
- Variable Weight
- Ongoing EWM support



- IM to EWM
- Paper to paperless (mobile)
- Designed Inbound, Outbound & Internal processes
- Serialization
- Production Integration
- Quality Integration
- Ongoing EWM support

- IM to EWM
- Paper to paperless (mobile)
- Designed Inbound, Outbound & Internal processes
- Batch Management
- Inbound & Outbound stock based on QTY classification
- Repetitive Manufacturing



- IM to EWM
- Designed Inbound, Outbound & Internal processes
- Label Printing before Picking
- Integration w/ various label printing software
- Warehouse Order & Task Split Based on Rules



QUESTIONS?

Mygo Contact:

Mauricio Grossi – VP, Sales & Marketing

Cell: 773-766-7741

Email: mauricio.grossi@mygoconsulting.com



Follow Us

Thank you for your time

Follow us on  at @ASUG365
