

Rudbeckia
terranigrae

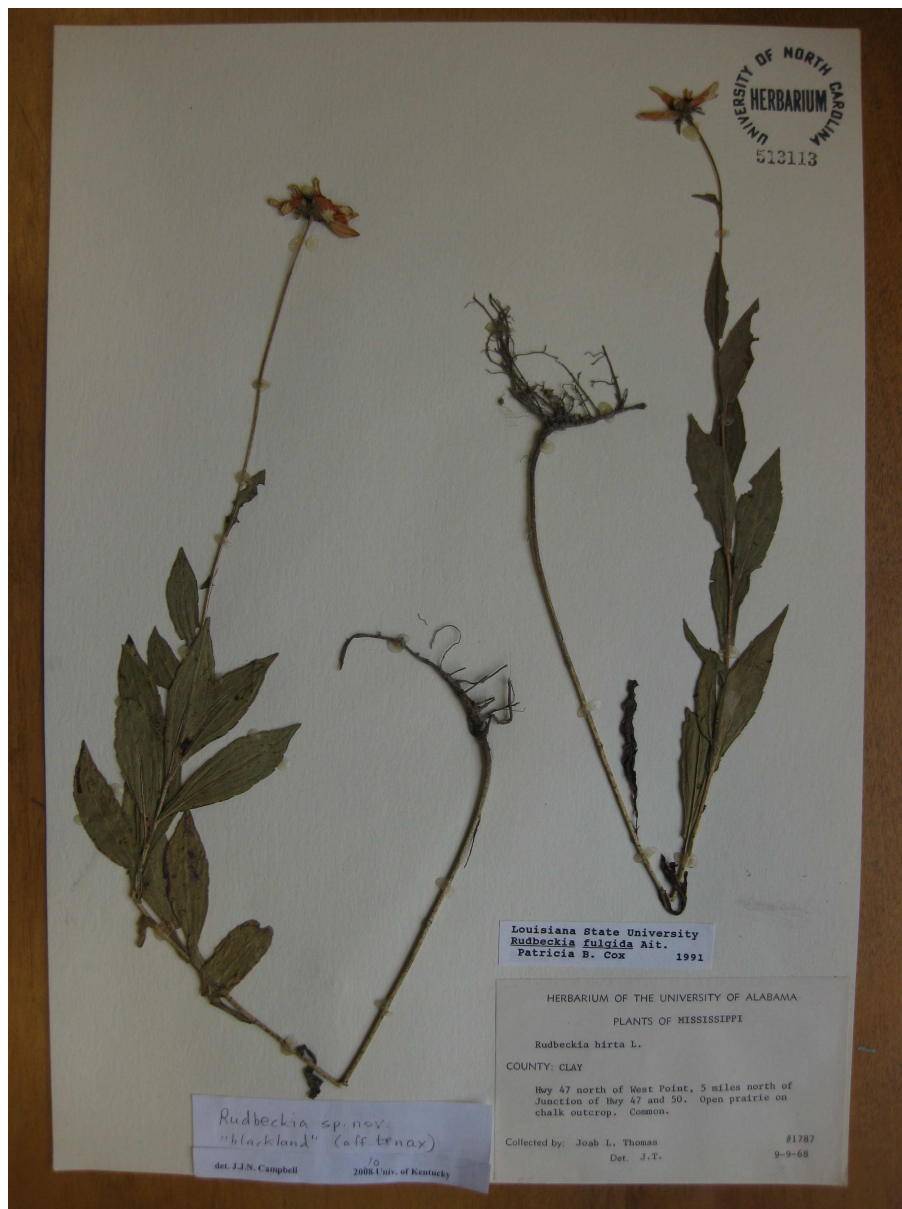
terrannigrae: part of type material, this grown to large size with profuse flowering in garden at Lexington, Kentucky; the plant originally from Pulliam Prairie, Chickasaw Co., Mississippi



terrannigrae: Harper 4026 from Dallas Co., Alabama, at NY.



terrani-grae: Thomas 1787 from Clay Co., Alabama, at UNC.



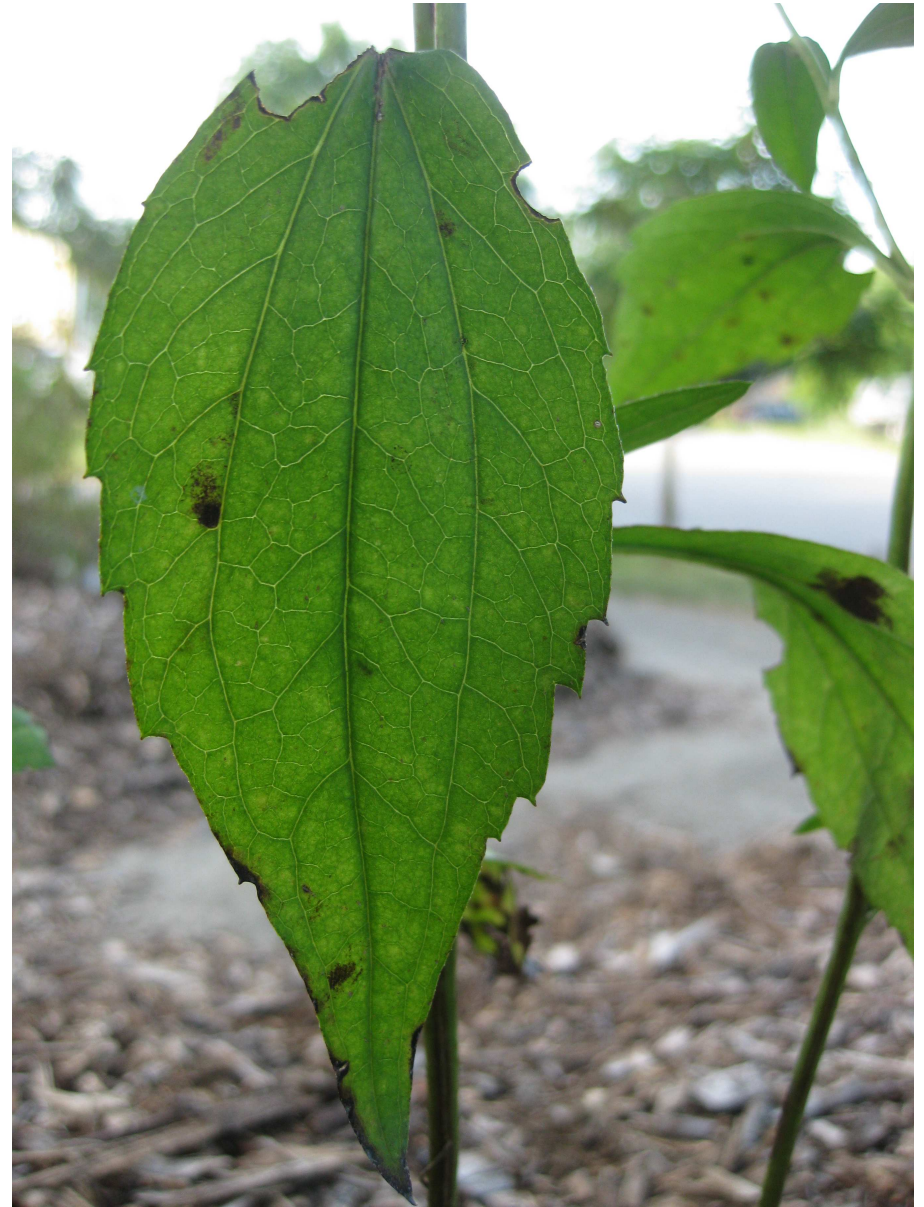
terrani-grae: MacDonald 9164 from Oktibbeha Co., Mississippi, at NY



terranigrae: from Pulliam Prairie, Chickasaw Co., Mississippi; but grown in partial shade on submesic site, Lexington, Ky., Aug 2011



ditto; showing relatively broad leaf with deep serration, unlike typical plants grown in native prairie.



terrani-grae: at Pulliam Prairie, Chickasaw Co. MS, Aug 2009;
growing between riparian thickets and low prairie.



ditto



terranigrae: at Pulliam Prairie, Chickasaw Co., Mississippi, in 2009; growing between riparian thickets and low prairie.



terranigrae: at Pulliam Prairie, Chickasaw Co., Mississippi, in 2009



terrani-grae: at Pulliam Prairie, Chickasaw Co., Mississippi, in 2009; growing along small ephemeral stream in thin riparian woods.



terranigrae: from Pulliam Prairie, grown in Lexington, Jun 2010.



terranae: from Pulliam Prairie, grown in Lexington, Jun 2010.



terranigrae: from Pulliam Prairie, grown in Lexington, Jun 2010.



terranigrae: from Pulliam Prairie, grown in Lexington, Jun 2010.



terranigrae: from Pulliam Prairie, Chickasaw Co., Mississippi; stoloniferous offsets, on plant grown in garden at Lexington, in Sep 2013



terraniarum: tetraploid from McNairy Co, Tennessee; but grown in garden at Lexington, Sep 2013



terraniar: tetraploid from McNairy Co, Tennessee; but grown in garden at Lexington, Sep 2013



terrani-grae: tetraploid from McNairy Co, Tennessee; but grown in garden at Lexington, Sep 2013

