

# Alpine plants are on the move: Quantifying distribution shifts of Australian alpine plants through time

Jennifer Auld<sup>1</sup> | Susan E. Everingham<sup>1,2,3,4</sup>  | Frank A. Hemmings<sup>1</sup> | Angela T. Moles<sup>1</sup> 

<sup>1</sup>Evolution & Ecology Research Centre, School of Biological Earth and Environmental Sciences, UNSW Sydney, New South Wales, Australia

<sup>2</sup>The Australian PlantBank, Australian Institute of Botanical Science, Royal Botanic Gardens and Domain Trust, Botanic Gardens Greater, Sydney, New South Wales, Australia

<sup>3</sup>Institute of Plant Sciences, University of Bern, Bern, Switzerland

<sup>4</sup>Oeschger Centre for Climate Change Research, University of Bern, Bern, Switzerland

## Correspondence

Susan E. Everingham, Evolution & Ecology Research Centre, School of Biological Earth and Environmental Sciences, UNSW Sydney, NSW 2052, Australia.  
Email: susan.everingham@unsw.edu.au

## Funding information

Australian Government; Australian Research Council, Grant/Award Number: DP180103611

Editor: Juliano Sarmento Cabral

## Abstract

**Aim:** Alpine plant species' distributions are thought to have been shifting to higher elevations in response to climate change. By moving upslope, species can occupy cooler and more suitable environments as climate change warms their current ranges. Despite evidence of upslope migration in the northern hemisphere, there is limited evidence for elevational shifts in southern hemisphere plants. Our study aimed to determine if alpine plants in Australia have migrated upslope in the last 2 to 6 decades.

**Location:** Kosciuszko National Park, NSW, Australia.

**Methods:** We collated historic occurrence data for 36 Australian alpine plant species from herbarium specimens and historic field observations and combined these historic data with modern occurrence data collected in the field.

**Results:** Eleven of the thirty-six species had shifted upslope in mean elevation and four species showed downslope elevational shifts. The rate of change for upslope shifts varied between 4 and 10 m per year and the rate of change for most downslope shifts was between 4 and 8 m per year, with one species shifting downslope at a high rate of 18 m per year. Additionally, some species showed shifts upward in their upper range edge and/or upward or downward shifts in their lower range edge. Five species also showed range contractions in the difference between their lower and upper range edges over time, while two showed range expansions. We found no significant differences in elevational shifts through time among herbaceous dicotyledons, herbaceous monocotyledons and shrubs.

**Main Conclusions:** Plant elevational shifts are occurring rapidly in the Australian alpine zone. This may allow species to persist under climate change. However, if current warming trends continue, several species within the Australian alpine zone will likely run out of suitable habitat within a century.

## KEYWORDS

alpine plants, biogeography, climate change, growth form, macroecology, plant migration, plant population dynamics, species distribution

This is an open access article under the terms of the Creative Commons Attribution License, which permits use, distribution and reproduction in any medium, provided the original work is properly cited.

© 2022 The Authors. *Diversity and Distributions* published by John Wiley & Sons Ltd.

## 1 | INTRODUCTION

Many species are predicted to undergo shifts in distribution in response to changes in climate (Parmesan & Yohe, 2003; Peterson et al., 2011; Thuiller et al., 2005). In line with these predictions, several northern hemisphere empirical studies have found evidence for both plant and animal species shifting their ranges poleward or upslope (Grabherr et al., 1994; Jump et al., 2012; Koide et al., 2017; Konvicka et al., 2003; Liang et al., 2018; Moritz et al., 2008; Parolo & Rossi, 2008). However, much less is known about the response of species in the southern hemisphere. We should not assume that southern species are showing similar responses to those in the north, as the southern hemisphere has a lower rate of climate change (Friedman et al., 2013) and very different species composition from that of the northern hemisphere (Box, 2002). Our study will address this knowledge gap by quantifying how Australian alpine plants have shifted their distributions over the last 20–60 years.

Alpine areas are habitats for many endangered and endemic species that are highly susceptible to climatic changes (Dirnböck et al., 2011). Along with their biological significance, alpine environments are socially, culturally and economically important (Costin et al., 2000; Hughes, 2011). Within these highly important ecoregions, rapid warming has been found to be amplified at higher elevations (Beniston et al., 1997; McGowan et al., 2018; Pepin et al., 2015). There are already noticeable impacts stemming from this increased warming including habitat loss and population decline in plants and animals (Grabherr et al., 2010; Halloy & Mark, 2003; Rehnus et al., 2018). It has been predicted that distribution shifts in alpine flora and fauna will occur in the Australian alpine region, including poleward range shifts and upward range shifts in elevation (Pickering et al., 2004). Several studies have quantified the impacts of climate change in Australian alpine areas including increases in seedling establishment of *Eucalyptus pauciflora* subsp. *niphophila* at lower elevations since 1970, which may lead to downhill range shifts in this species (Green & Venn, 2012). Studies have also found changes in species composition including increased shrub cover and decreased graminoid cover with experimental warming in this region (Wahren et al., 2013); as well as observed shifts in species' phenology with a few species flowering earlier in the year than in the past (Gallagher et al., 2009) and increases in the invasion of non-native species (Scherrer & Pickering, 2001). However, our study is the first to test for elevational range shifts across a wide range of Australian alpine plant species.

Since average temperatures decrease by 6.5°C per 1000 m of elevation gained (Wallace & Hobbs, 2006), it is predicted that most alpine species will move upslope in response to climate change to remain within suitable climatic conditions (Parmesan & Yohe, 2003; Pickering et al., 2004). However, northern hemisphere studies have revealed substantial variation between species in both the direction and the speed of range shifts (Lenoir & Svenning, 2015; Rumpf et al., 2018). Our first goal was to test the hypothesis that species' mean elevations are shifting uphill and to quantify the proportion of Australian alpine plants undergoing uphill range shifts, the

proportion of species whose ranges are staying static and the proportion whose ranges are shifting downhill.

In addition to quantifying species' mean elevational shifts, we quantified changes in the leading and trailing edges of species ranges. As the climate warms, it is expected that more favourable conditions will arise at the upper edge of species' ranges (Breshears et al., 2008). These conditions might allow for increased plant establishment opportunities at higher elevations, resulting in an upslope shift of species' upper range margin. Likewise, the trailing edge of each species will encounter less favourable temperatures, potentially resulting in reduced recruitment and/or increased mortality of established plants (Breshears et al., 2008). Thus, our second hypothesis was that species' upper and lower range edges have shifted upslope over time. However, it is not clear whether changes in range edges will be more or less dramatic than changes in the centre of species' ranges. Some studies suggest that plants and animals will be most sensitive to climatic changes at the fringes of their range (Lesica & McCune, 2004) and that species are typically more abundant in the centre of their range, declining gradually towards range margins (Lenoir & Svenning, 2015). However, other studies have shown that species are more abundant in suboptimal conditions (Dallas et al., 2017) or have non-linear relationships between their abundance and environmental suitability (Baer & Maron, 2020).

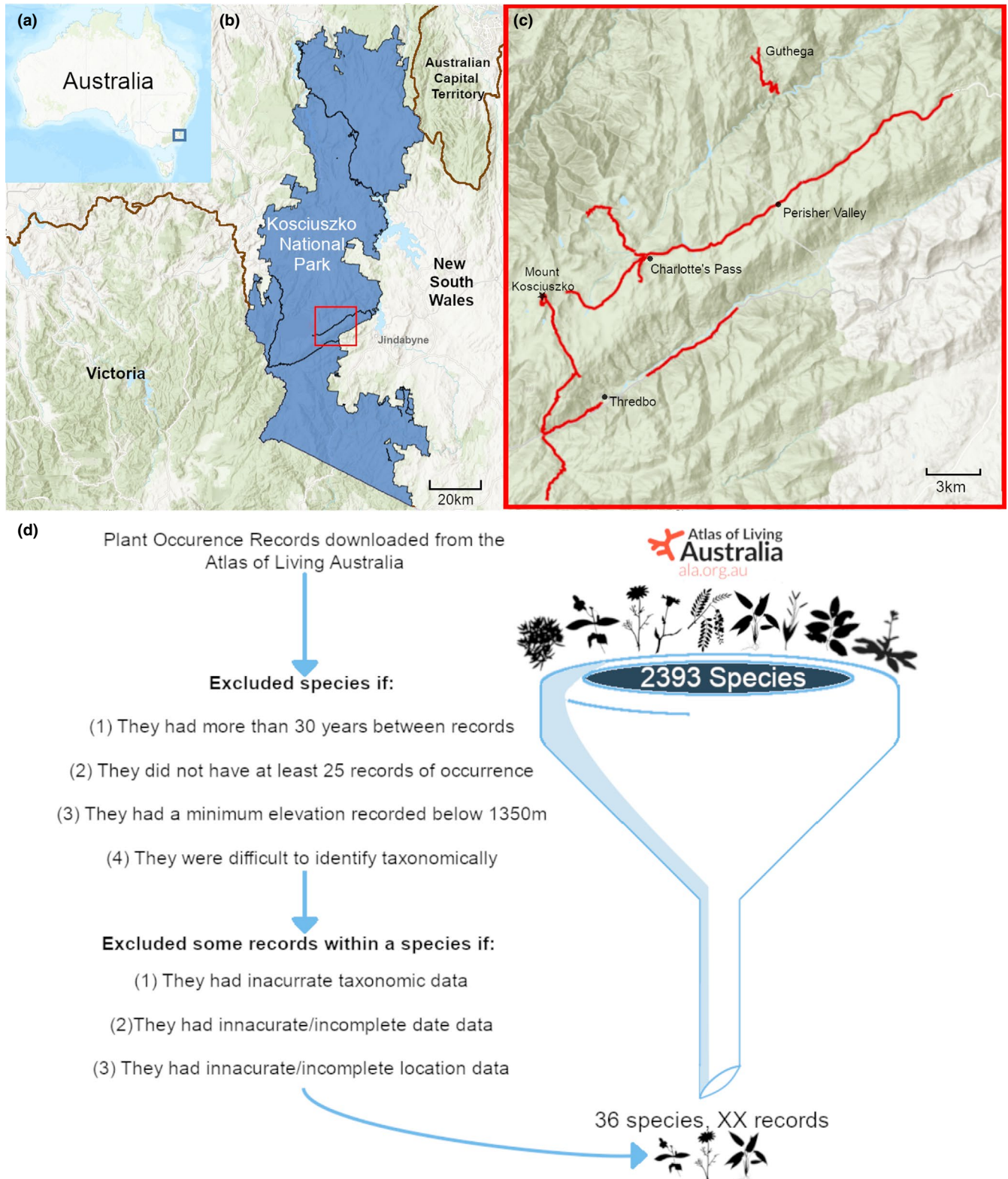
Understanding how climate change affects the extent of a species' elevational range (i.e. the difference between the maximum and minimum elevation at which the species occurs) is also important because species with contracting elevational ranges will be at a higher risk of becoming threatened or possibly going extinct (La Sorte & Jetz, 2010). In line with projections from the northern hemisphere (Koide et al., 2017; La Sorte & Jetz, 2010), our third hypothesis was that alpine species' elevational ranges would contract through time.

Finally, we asked whether the rate of species' distribution changes was related to growth form. Evidence from Europe shows that species with shorter life cycles (e.g. herbs and grasses) have undergone larger changes in their distribution in response to climate change over the last few decades than have species with slower life cycles (trees and shrubs; Lenoir et al., 2008). Our fourth and final hypothesis was that herbaceous monocotyledons have shifted their distributions more over time than herbaceous dicotyledons, which in turn have shifted more than woody dicotyledons.

## 2 | METHODS

### 2.1 | Location

Our study focused on alpine communities in Kosciuszko National Park, in southern New South Wales, Australia (Figure 1a–c). The tree line in this region is between 1800 and 1900 m above sea level (Pickering & Venn, 2013). Over the past 60 years, the mean temperature in this region has increased by 0.02°C per year (Hennessy et al., 2003; Sritharan et al., 2021; Figure S1a) and snow regimes are



**FIGURE 1** Site location of our study within (a) Australia in (b) Kosciuszko National Park, which is also used as the boundary for selecting historic species records from the Atlas of Living Australia. (c) Shows the transects taken during fieldwork within Kosciuszko to determine modern species distribution records from the Atlas of Living Australia. (d) Flowchart of the methods used to clean species occurrence data collected from the Atlas of Living Australia. Records were first scanned and removed based on three criteria, followed by the scanning and removal of whole species from the data based on four criteria. Data at the end of screening contained 36 species and 1860 records which were then used in further analyses and hypothesis testing in the study. This figure was created by the authors with the use of plant silhouette images from PhyloPic (phylopic.org), all of which have no copyright and under the Public Domain Dedication 1.0 license with no author credited except for the Faboidea plant (credited to Mattia Menchetti), the Angiospermae plant which is available for reuse under the Creative Commons Attribution 3.0 Unported license (link) and designed by T. Michael Keesey and Tanetahi and the Arabidopsis plant (credited to Jake Warner)

already showing significant changes, with snow depth (Figure S1b) and snow cover duration both declining (Bhend et al., 2012).

## 2.2 | Data collection

To obtain historic species distribution data, we downloaded plant occurrence records (including herbarium data and field observations) containing geographic data from the Spatial Portal on the Atlas of Living Australia (ALA; [www.ala.org.au](http://www.ala.org.au)). The data from ALA were obtained by filtering species within an existing ALA layer that defined the Kosciuszko National Park from a Gazetteer polygon called "CAPAD 2016 Terrestrial" under the filter "Kosciuszko" (Environmental Resources Information Network (ERIN), 2018; Figure 1b). This initial download contained a total of 2393 species with occurrence records in the region (Figure 1d). We then excluded any species occurrence records that did not have accurate taxonomic data (i.e. individuals had to be identified to species level or be historically differentiated if there were subspecies, Figure 1d). Records were also excluded if they had an inaccurate or absent date and/or location data (i.e. >50 m of "Coordinate Uncertainty" for ALA records), or if there were  $\geq 30$  years between records (to avoid isolated points having undue influence on analyses). These exclusions resulted in the total number of species with records decreasing from 2393 to 1442 (Figure 1d). We then restricted our list further to 389 species as we excluded a large number of species that did not have at least 25 records of occurrence (to ensure there were sufficient replicates for analysis) or if their data did not span until at least the year 2000 (to allow enough time to quantify a response). Species were excluded if they had a minimum elevation recorded below 1350 m (i.e. non-alpine). We also excluded species that were considered difficult to identify taxonomically, to ensure that all records were of the correct species. After applying these final data quality filters our study included 36 species, spanning 15 families (Figure 1d and see Supporting Information, Table S1, for full species list). These species are a subset of representative species that are common in the area (pers. obs. F. Hemmings; J. Auld), which is also clear in the fact that they were observed commonly in historic records. These 36 species also cover the most species-rich families of the local flora above the tree line (including Asteraceae, Ericaceae, Ranunculaceae, Poaceae, Orchidaceae, Cyperaceae and Juncaceae) as well as some less common families (including Lycopodaceae and Droseraceae) (Doherty et al., 2015).

We collected modern distribution data during the 2019–2020 spring–summer season to determine the current range of a subset of the species obtained from historic data (see Supporting Information, Table S1, for species that were sampled in the modern field survey). Modern data were collected along 11 transects following walking trails and roads within Kosciuszko National Park (Figure 1c). These transects were located in areas where there were large amounts of historic data, making the modern data and the historic data as comparable as possible. Our transects ranged from 1245 to 2228 m in elevation and species' presence was recorded

within elevational bands of 10 vertical metres with intervals of 20 vertical metres between bands (i.e. 1245–1255 m, 1275–1285 m and 1305–1315 m). Species were recorded as present within an elevational band if they were observed within  $\pm 5$  m on either side of the road or trail, within the elevational range. To account for topography, if there were multiple increases and decreases in elevation along a transect, we only sampled the first occurrence of the elevational band. We also sampled the 10 m elevational band downslope from each summit. The lowest and highest elevation observed for each species was also recorded. For elevation measurements, we either used the *My GPS location* app on a Samsung™ Galaxy S10 5G phone or the *FindGPSLocation* app on an iPhone®8. Smartphones had GPS accuracies of  $\pm 5$  m (Merry & Bettinger, 2019).

## 2.3 | Statistical analysis

All analyses were performed in R Studio, version 3.6.1 (R Core Team, 2019), and our data and code are freely available (Supporting Information and <https://github.com/SEveringham/Alpine-Plant-Migration>).

Using the Google Maps Elevation API and the *google\_elevation* function in the *googleway* package (Cooley & Barcelos, 2018), we calculated accurate elevations of each historic occurrence record from the supplied geographic coordinates.

## 2.4 | Hypothesis 1: that species' mean elevations are shifting uphill

We used ordinary least square regressions to analyse the relationship between elevation (m) and year of collection for each species. This analysis was done using the *lm* function in base R (R Core Team, 2019) with elevation as the response variable and year as a numeric fixed effect. To reduce the possibility of false significance that might have been associated with the number of statistical analyses performed, we applied the Holm–Bonferroni *P*-adjustment on the linear regression *p*-values with the *p.adjust* function in base R (R Core Team, 2019).

To determine if mean elevation was shifting upslope across all species in our study, we extracted the estimated model coefficients of the slopes from the individual species' regressions. To control for differences in species' sample sizes and standard errors, we used these in a univariate meta-analysis weighted by the sampling variance ( $v_i$ ) for each species (*i*). This analysis was performed using the function *rma.uni* in the *metafor* package (Viechtbauer, 2010). Species that had a maximum elevation at or very near the peak of the highest mountain in Kosciuszko (2228 m) could have had a confounding effect on the results as they are unable to shift higher in elevation. To assess the magnitude of this problem, we performed a meta-analysis with a binary moderator (predictor) variable for whether the species occurred above or below 2200 m. Since there was no significant effect for the location of the species above or below



2200 m ( $R^2 = 0.06$ ,  $p = 0.08$ ), we were able to present the mean elevational trend for all species in the results and include all species in the meta-analysis.

## 2.5 | Hypothesis 2: that species' upper and lower range edges are shifting upslope over time

Only 18 of the total 36 species with historic maximum elevations below 2200 m were included in this analysis (because species at the top of the available space cannot move any further upslope). The remaining 18 species with historic maximum elevations above 2200 m were included only in the analyses of whether lower limits were shifting upward over time as we were unable to measure their upper range edge shifts for these species as there is no higher land available for them to colonize. We performed quantile regressions using the function *rq* in the *quantreg* package (Koenker, 2020) to quantify the relationship between each species' upper (95th quantile) and/or lower (5th quantile) elevational range and year. We calculated the associated standard errors and *p*-values for these quantiles using the bootstrap method with 200 replications. Additionally, we conducted a *p*-adjustment on both quantile regressions' *p*-values due to multiple statistical comparisons with the *p.adjust* function in base R (R Core Team, 2019), using the Holm–Bonferroni method. To compare the changes in upper and lower elevational ranges across all species, we extracted the estimated model coefficients of the slopes from the individual species' upper and/or lower quantile regressions. We used these in a multivariate meta-analysis using the function *rma.mv* in the *metafor* package (Viechtbauer, 2010).

## 2.6 | Hypothesis 3: that species ranges are contracting over time

We used only species with historic occurrence below 2200 m (18 of 36 species). We used the *anova* function in base R (R Core Team, 2019) to determine whether the upper (95th) and lower (5th) quantiles were significantly different, which indicates range contraction or expansion. We conducted a *p*-adjustment due to multiple comparison testing, using the Holm–Bonferroni method in the *p.adjust* function in base R (R Core Team, 2019).

## 2.7 | Hypothesis 4: that herbaceous monocotyledons have shifted their distributions more over time than herbaceous dicotyledons, which in turn have shifted more than woody dicotyledons

We categorized each species into one of three growth form types (see Table S1 for classifications). For our species, there were 14 herbaceous monocotyledons, 16 herbaceous dicotyledons and 5 woody dicotyledons. One species (*Lycopodium fastigiatum*) is a club moss that differs greatly from the other species in growth form, so we

excluded this outlier from our analysis of growth form. We performed a meta-analysis on the mean linear regression of all species with a moderator (predictor) variable for growth form.

## 3 | RESULTS

Almost a third (11 of 36) of the species in our study have undergone a significant upslope shift through time ( $p < .05$ , Figures 2 and 3, see Supporting Information, Table S1 for full results), with an average upslope shift of 6.09 m per year (Table S2). The results for five of these species (*Stackhousia pulvinaris*, *Astelia psychrocharis*, *Dichosciadium ranunculaceum*, *Carex hypandra* and *Chionochoa frigida*) remained significant after *P*-adjustment for multiple hypothesis testing (Figures 2 and 3). Four species showed a significant downslope shift in elevation over time ( $p < .05$ , Figures 2 and 3), with an average downslope shift of 9.44 m per year (Table S2). For example, the perennial herb *Colobanthus affinis* moved downslope in mean elevation by ~8 m per year and the vulnerable herb *Ranunculus anemoneus* moved ~4 m per year downward in mean elevation (Figure 3). However, none of these downslope shifts remained significant after adjusting for multiple hypothesis testing. The remaining 21 species (58%) showed no significant shift over time ( $p > .05$ ). When combining all species mean elevational shifts in a meta-analysis, we found an average range shift of approximately 1.12 m increase in elevation per year, but this upslope trend was not significantly different from zero ( $Z = 1.23$ ,  $p = .22$ ; Figure S2).

Ten of thirty-six species showed a significant upslope shift in the lower range edge (5th quantile) of their distribution through time ( $p < .05$ , Figures 2 and 3, Table S1), with an average upslope shift of 6.91 m per year (Table S2). Three of these trends (*Astelia psychrocharis*, *Luzula acutifolia* and *Stackhousia pulvinaris*) remained significant after *p*-value adjustment. One species (*Colobanthus affinis*) had a significant downslope shift of 17.84 m per year (Table S2) in its lower range edge through time ( $p < .05$ , Figure 3), but this trend did not remain significant after *p*-value adjustment. The total average for all significant lower range edge shifts was an upslope shift of 4.66 m per year (Table S2). The remaining 25 species showed no significant movement over time ( $p > .05$ ). Counter to our prediction, we found no significant overall shift in lower range edge through time (meta-analysis,  $Z = 0.25$ ,  $p = .80$ ; Figure S3).

We were only able to analyse the change in the upper range edges of the 18 species whose distributions did not historically reach the maximum elevation of the available habitat. Four of these eighteen species showed a significant upslope shift in their upper range edge (95th quantile,  $p < .05$ , Table S1), with an average of 5.96 m per year (Table S2). However, only one of these results (*Orites lancifolius*) remained significant after *P*-value adjustment (Figure 2). One species (*Ranunculus muelleri*) of eighteen showed a significant downslope shift ( $p = .02$ ) of 4.58 m per year (Table S2), but the trend did not remain significant after *p*-adjustment. The overall average for significant shifts in the lower range edge was 3.85 m per year (Table S2). The remaining 13 species showed no significant shift in their upper range edge ( $p > .05$ , Figure 2). The

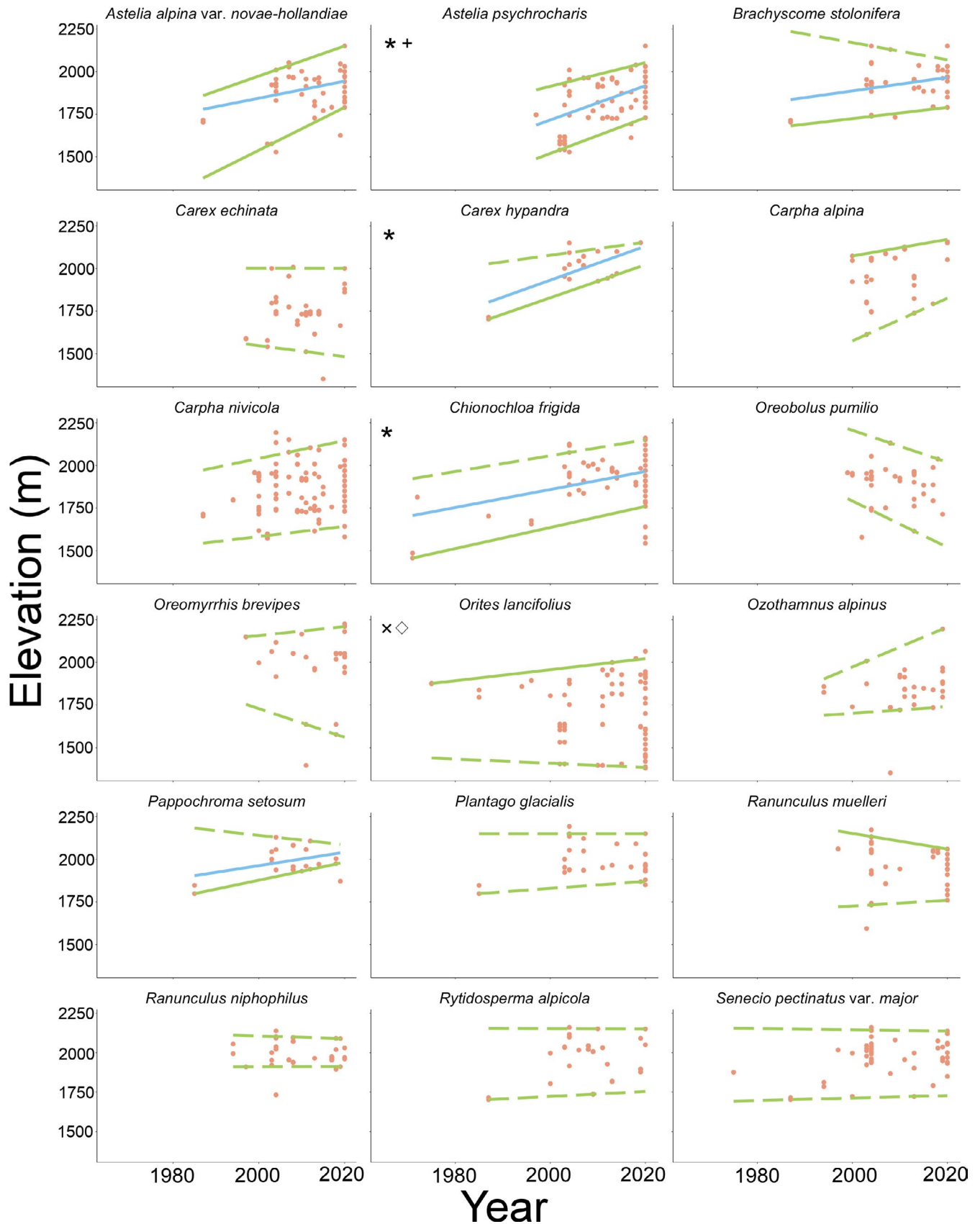


FIGURE 2 Individual species' relationships between year and elevation for species that had a maximum historic elevation below 2200 m. Blue lines represent significant linear regressions on the mean ( $p < .05$ ). Green lines represent upper (95th) and lower (5th) quantile regressions, with dashed lines showing non-significant quantile regressions ( $p > .05$ ) and solid lines showing significant quantile regressions ( $p < .05$ ). The following symbols indicate outcomes that remained significant after a Bonferroni-Holm  $P$ -value adjustment: linear regressions (\*), lower quantile regressions (+), upper quantile regressions ( $\diamond$ ) and upper and lower quantiles significantly different ( $\times$ )

meta-analysis revealed that across all 18 species, there is no significant trend in the upper range edge ( $Z = 1.34$ ,  $p = .18$ , Figure S4).

Two of the eighteen species for which we could analyse both the upper and lower range edges showed a significant difference in the slope between their leading (95th quantile) and trailing (5th quantile) edges ( $p < .05$ , Table S1), indicating a change in elevational range over time. *Orites lancifolius* showed an increase in elevational range over time and this increase remained significant after  $P$ -adjustment (Figure 2). The range of *Brachyscome stolonifera* had contracted over time, but this change was not significant after accounting for multiple hypothesis testing.

Four of the eighteen species whose ranges were already at the top of the available topography showed significant range contractions (i.e. their lower quantile had a significant positive slope,  $p < .05$ , Figure 3). The results for *Luzula acutifolia* and *Stackhousia pulvinaris* remained significant after adjusting for multiple hypothesis testing. Unexpectedly, one species (*Colobanthus affinis*) showed a significant range expansion (lower quantile negatively significant,  $p < .05$ , Figure 3), but this result did not remain significant after  $P$ -adjustment. The remaining 13 of 18 species' ranges have neither contracted nor expanded over time ( $p > .05$ ).

Although we excluded species that had  $\geq 30$  years between data points to mitigate the problem of isolated points having undue influence on the analyses, we found that some species still showed large breaks in occurrence data through time, particularly before the year 2000 (Figures 2 and 3). In a post hoc analysis, we selected species that had three or fewer points of data before 1985 and no data between 1985 and 2000 (i.e. a large period of time between historic occurrence and modern occurrence data). We then removed these few data before 1985 and reanalysed each elevation regression (mean, 95th quantile and 5th quantile) and found that for four species (*Brachyscome stolonifera*, *Carex hypandra*, *Luzula acutifolia* subsp. *nana* and *Pappochroma setosum*) the shifts in mean elevation were no longer significant after removing these data points (Table S3) and for one species, *Plantago glacialis*, the shift in the upper quantile of elevation became significant after removing the outlying data points (Table S3).

All three growth form groups revealed an average upslope shift through time. Herbaceous monocotyledons had the greatest mean increase in elevation ( $2.14 \text{ m year}^{-1}$ ), woody dicotyledons were intermediate ( $1.03 \text{ m year}^{-1}$ ), while herbaceous dicotyledons had the smallest mean increase in elevation ( $0.74 \text{ m year}^{-1}$ , Figure 4). Meta-analysis showed no significant difference in mean elevation between herbaceous monocotyledons or herbaceous dicotyledons or woody dicotyledons ( $p = .77$ , Figure 4).

## 4 | DISCUSSION

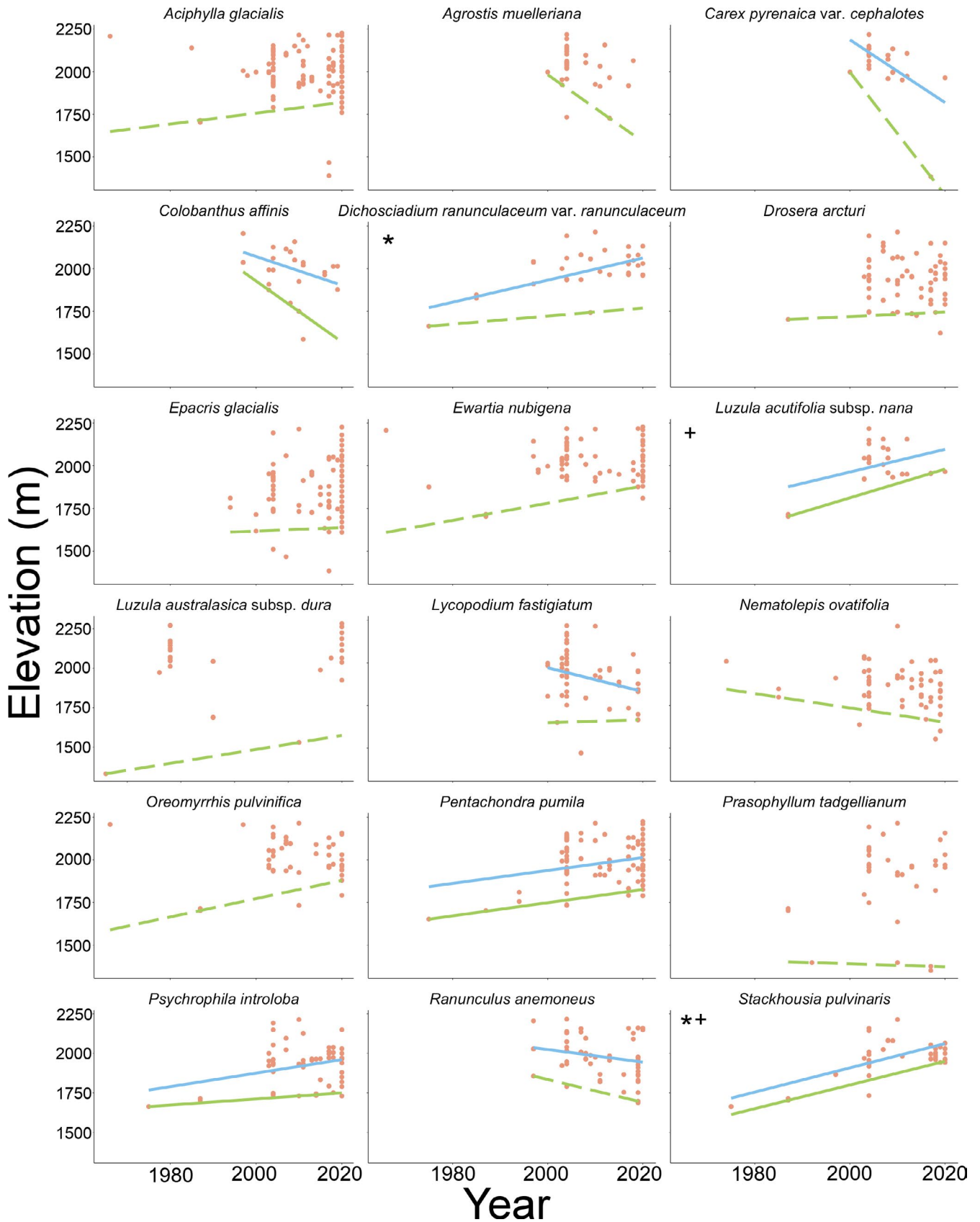
### 4.1 | Hypotheses 1 & 2: that species' mean elevations are shifting uphill; and that species' upper and lower range edges are shifting upslope over time

Almost a third of the Australian alpine plant species in our study have shifted their ranges uphill over the last 2 to 6 decades (Figure 5). That is, some southern hemisphere species seem to be

mitigating the effects of climate change by shifting to cooler habitats in a similar manner as their northern hemisphere counterparts (Parolo & Rossi, 2008) and species in the tropics (Jiménez-García et al., 2021; Morueta-Holme et al., 2015). Although this is a welcome news, upslope migration is not a long-term solution for Australian species. Australia has much lower mountain peaks than Europe or North America, so species have a limited amount of higher ground to colonize. For example, if current trends continue, the elevation of the lower range edge of *Astelia psychrocharis* will reach the peak elevation in NSW in under 50 years. This species is already classified as endangered in Victoria (VicFlora, 2016), where the peaks are all below 2000 m.

Four of our study species showed a significant downslope shift through time (Figures 2, 3 and 5). One potential explanation for downhill shifts is changing biotic pressures. First, warming may allow more competitive species from lower elevations to colonize higher elevations. Increased competitive pressure at high elevations could reduce the realized niches of some higher-elevation species, resulting in a range contraction and a corresponding downhill shift of the centre of the range (Figure S5). However, all four of the species that showed significant downslope shifts in our study historically occurred at the mountain peak, so we were not able to quantify changes in their upper range limits and thus cannot test this idea. Second, as the dominant species at lower elevations become physiologically less well suited to the changed climatic conditions, their competitive ability may decrease, potentially allowing higher-elevation species that were previously competitively excluded from a region to establish (although the high elevation species may have to compete for these habitats with species moving in from lower elevations). To test these ideas, future empirical analyses could look at changes in community composition and structure, rather than focussing solely on species' ranges. Another possible explanation for downslope shifts is that cold air drainage, cold sinks or temperature inversions may occur at intervals along elevational gradients and provide species with favourable habitat at lower elevations (Wallace & Hobbs, 2006). Other topographic factors such as the slope and aspect of the mountain may also have an influence on species' elevation range shifts and future studies could repeat field sampling in the transects where we collected modern occurrence data. This would enable researchers to gain long-term data of individual species' distributions on particular slopes/aspects of the mountain region in order to determine whether topography plays a role in elevational shifts. Finally, along with the obvious increase in temperature through time due to global climate change, there have been changes in other aspects of climate such as precipitation, snow cover duration and water availability – changes which could also be driving these downslope range shifts (Lenoir et al., 2010). Improving understanding of which species are moving downhill and the mechanisms underpinning these responses is clearly a worthwhile direction for future work.

Many species showed no shift in elevation over time (Figure 5). This may result from barriers to migration such as competition, resource availability and changing snowmelt regimes (Cannone et al., 2007; Pickering et al., 2004). Species in some ecosystems may cope



**FIGURE 3** Individual species' relationships between year and elevation for species that had a historic maximum elevation above 2200 m. Solid blue lines represent significant linear regressions on the mean ( $p < .05$ ). Green lines represent lower (5th) quantile regressions, with dashed lines showing non-significant quantile regressions ( $p > .05$ ) and solid lines showing significant quantile regressions ( $p < .05$ ). As only species with historic maximum elevations below 2200 m were included in this analysis (because species at the top of the available space cannot move any further upslope), there are no upper (95th) quantile regressions in this analysis or figure. The following symbols indicate outcomes that remained significant after a Bonferroni-Holm  $P$ -value adjustment: linear regressions (\*) and lower quantile regressions (+)



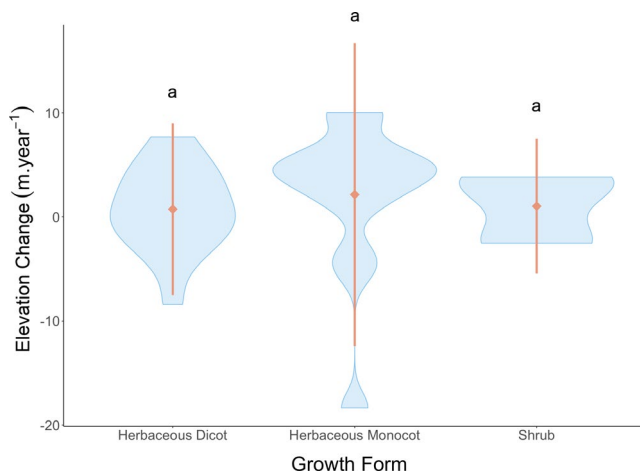
with increasing temperatures through plasticity or rapid evolution (Bonamour et al., 2019; Merilä, 2012). However, a recent study found evidence for morphological change through time in only 2 of 21 Australian native alpine species (Sritharan et al., 2021), suggesting that rapid evolution is not a common response to climate change in our study area. Microtopography and shifts in short horizontal distances could also be an alternative to elevational shifts as they can result in temperature differences similar to that of large elevational gradients (Scherrer & Körner, 2009).

We speculated that some species might persist by shifting poleward (as seen in other systems, particularly in the northern hemisphere; Parmesan, 2006; Virkkala & Lehikoinen, 2014). There are small areas of alpine habitat in Victoria and Tasmania, to the south of

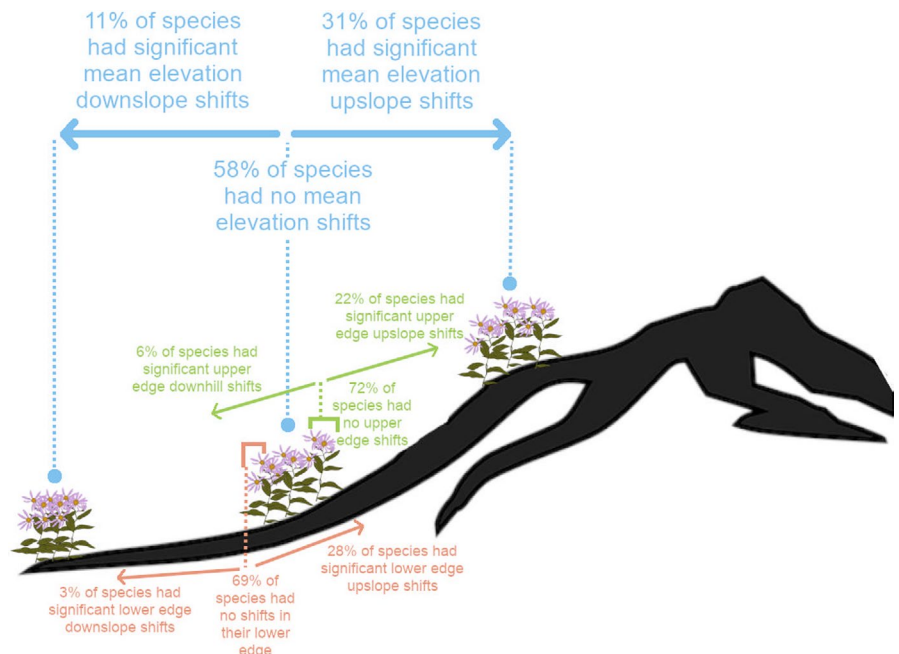
our study site (Pickering et al., 2004). However, Kosciuszko National Park contains the highest peaks in Australia. Victoria's highest peak is at 36.73°S and is 242 m lower than Mt Kosciuszko (2228 m tall and at 36.46°S) and Tasmania's highest peak is at 41.87°S and is 611 m lower, so it is doubtful that latitudinal shifts are a viable strategy for species in our study area.

Some species may simply not have had sufficient time to respond to climate change, or that the signal is not yet strong enough to be seen within the available data. Six of eleven of the mean elevation uphill shifts and none of the four mean elevation downhill shifts we observed in our study moved from significant to non-significant ( $p > .05$ ) after controlling for multiple hypothesis testing. Similar results were found for the relationships of leading and trailing edge shifts. This may be due to the limited number of historic data points for particular species (e.g. *Brachyscome stolonifera* had only 53 data points over a shorter time frame from 1987 to 2019 and *Colobanthus affinis* had only 41 data points from 1997 to 2019) giving weaker statistical power to our results. This highlights the importance of natural history collections such as species occurrence observations and herbarium records to monitor long-term ecological change due to changes in climate. Future studies could re-sample our data with the historic data found and this would provide greater evidence for species distribution shifts due to climate change in this important ecoregion. We suspect that the coming decades will reveal even more Australian species on the move.

Thirteen of the species in our study have also been monitored for long-term trends in distribution shifts (albeit over a shorter time frame than our current study using historic records and on five points of elevation rather than a continuous gradient) on Mount Clarke (approximately 3.5 km northeast of Mount Kosciuszko) for the global collaborative project – GLORIA (Global Observation Research Initiative in Alpine Environments). These species showed similar trends overall in that some expanded their range upward with climate warming and others showed no change in range (Verrall et al.,



**FIGURE 4** Violin plot of the regression slope for elevational shift through time for species of each growth form. The orange diamond indicates the mean and the orange bar is  $\pm$  the standard deviation. The letters “a” above plots denote that there were no between group significant differences when comparing each growth form to one another



**FIGURE 5** Schematic of the multiple shifts in mean elevation (blue), upper range edge (green) and lower range edge (orange) of all the species in the study. Mountain image and Asteraceae image adapted from open source images at <https://pixabay.com/>

2021). This GLORIA site could provide the required future data for species range shifts in the Australian alpine region.

#### 4.2 | Hypothesis 3: that species ranges are contracting over time

Our study identified six species that have undergone range contractions. This is important, as one of the strongest predictors for the threat of extinction in a species is the size of its geographical range (Staute et al., 2020). Species that are restricted to a smaller elevational range may also be less resilient to environmental pressures such as invasive species and human activity such as recreational skiing, hiking and mountain biking (Costin et al., 2000). Species with smaller ranges also tend to have a lower local abundance (Gaston et al., 2000), which leads to an increased sensitivity to environmental changes. A potential direction for future research would be pairing local abundance of species within their elevational ranges and their elevational range shifts to identify possible areas of species loss.

Despite the benefits of migration away from unfavourable climate conditions, it is vital to consider the many implications on the species and their pre-existing alpine communities. Shifts in elevations of species may result in new interactions between species that were historically spatially separate (Alexander et al., 2018; Descombes et al., 2020) and the new dynamics may have effects on existing communities (Dormann & Woodin, 2002). These novel interactions have unknown impacts on species competition and survival (Walther, 2010). For example, snowpatch herbfield and windswept feldmark habitats are characterized by sparse small low-lying herbs and both are critically endangered habitats that occur in the higher elevations of the Australian alpine region (McDougall & Walsh, 2007; Pickering & Venn, 2013). If new species, such as dominant plants like the shrub *Orites lancifolius* or the large, tufted grass *Chionochloa frigida*, are to establish in higher elevations, they may have damaging structural impacts on the existing low-lying plant communities. Similarly, downslope range shifts may lead to species colonizing new habitats and environments, introducing new interaction dynamics with existing biodiversity (Walther, 2010). Thus, even though elevational range shifts may allow species to persist in the face of climate change, the movement to a new area may also result in substantial changes to already threatened ecological communities.

#### 4.3 | Hypothesis 4: that herbaceous monocotyledons have shifted their distributions more over time than have herbaceous dicotyledons, which in turn have shifted more than woody dicotyledons

Species with fast life-history traits such as shorter life cycles, small stature and fast development and reproduction were predicted to be more likely to shift their ranges in response to climate change (Lenoir et al., 2008). However, we found no significant difference

in elevation shift among growth forms (Figure 5). This result is consistent with modelling by Lustenhouwer et al. (2017), in which the longer time until the occurrence of reproduction of larger species was counterbalanced by their greater dispersal distances and fecundity, resulting in no difference in migration rate between annual herbs, perennial herbs and shrubs.

A meta-analysis of northern hemisphere studies revealed that species had an average rate of elevation movement of 1.11 m year<sup>-1</sup> upslope (Chen et al., 2011), which is very similar to the average rate of change in our study (1.95 m year<sup>-1</sup>, Table S2). However, there were substantial differences between the proportion of species in our study that had shifted in elevation over time and the proportion of species showing elevational shifts in Europe and North America. In the northern hemisphere, the highest proportion of species are moving upward in elevational ranges; with 60–65% of species shifting upslope, 20–25% species shifting downslope and 10–15% of species not shifting in any direction (Chen et al., 2011; Gibson-Reinemer & Rahel, 2015; Lenoir et al., 2010), whereas our study revealed that in the Australian alpine region ~30% of species are shifting upslope, ~10% are shifting downslope and ~60% are not shifting at all. The lower proportion of species changing in our study may be due to the shorter time frame used (median ~33 years in our study cf. ~50–65 years in northern studies; Gibson-Reinemer & Rahel, 2015; Parmesan & Yohe, 2003). Another possibility is that northern hemisphere species are more likely to be responding to climate change because of the faster warming they have experienced (Friedman et al., 2013).

## 5 | CONCLUSIONS

Alpine ecosystems are considered to be particularly at risk under future climate change due to their high climate sensitivity and large numbers of endemic and threatened species (Dirnböck et al., 2011). Identifying which species are shifting their distributions can help us to predict which species would benefit most from higher intervention conservation methods such as assisted colonization to help species migrate across isolated and fractured landscapes (Parmesan & Hanley, 2015). Our findings also suggest that future climatic warming could result in more species elevational shifts, which in turn could lead to large changes in ecological community dynamics, for instance, by changing the suite of interacting species present in different regions. We still have much to learn about the likely impact of this world changing process on our precious alpine plant communities.

### ACKNOWLEDGEMENTS

This research was supported by the Australian Government through the Australian Research Council Discovery Project funding scheme to ATM (project DP180103611). Author SEE was also supported by funding through the Australian Government's Research Training Program (RTP). We acknowledge the NSW National Parks and Wildlife service where fieldwork was undertaken (scientific license SL102363) and thank Mellea Schroder for aiding fieldwork in Kosciuszko National Park.

## CONFLICT OF INTEREST

All authors have no conflicts of interest to declare.

## PEER REVIEW

The peer review history for this article is available at <https://publons.com/publon/10.1111/ddi.13494>.

## DATA AVAILABILITY STATEMENT

All data are publicly accessible through Dryad (<https://doi.org/10.5061/dryad.r4xgd2d4>). Analysis code is freely available in the supplementary information and on GitHub (<https://github.com/SEveringham/Alpine-Plant-Migration>).

## ORCID

Susan E. Everingham  <https://orcid.org/0000-0002-4780-2700>

Angela T. Moles  <https://orcid.org/0000-0003-2041-7762>

## REFERENCES

- Alexander, J. M., Chalmandrier, L., Lenoir, J., Burgess, T. I., Essl, F., Haider, S., Kueffer, C., McDougall, K., Milbau, A., Nuñez, M. A., Pauchard, P., Rabitsch, W., Rew, L. J., Sanders, N. J., & Pellissier, L. (2018). Lags in the response of mountain plant communities to climate change. *Global Change Biology*, 24(2), 563–579. <https://doi.org/10.1111/gcb.13976>
- Baer, K. C., & Maron, J. L. (2020). Ecological niche models display non-linear relationships with abundance and demographic performance across the latitudinal distribution of *Astragalus utahensis* (Fabaceae). *Ecology and Evolution*, 10(15), 8251–8264.
- Beniston, M., Diaz, H. F., & Bradley, R. S. (1997). Climatic change at high elevation sites: An overview. *Climatic Change*, 36(3–4), 233–251.
- Bhend, J., Bathols, J., & Hennessy, K. (2012). *Climate change impacts on snow in Victoria* (p. 42). CSIRO report for the Victorian Department of Sustainability and Environment.
- Bonamour, S., Chevin, L. M., Charmantier, A., & Teplitsky, C. (2019). Phenotypic plasticity in response to climate change: the importance of cue variation. *Philosophical Transactions of the Royal Society B: Biological Sciences*, 374(1768), 20180178.
- Box, E. O. (2002). Vegetation analogs and differences in the northern and southern Hemispheres: A global comparison. *Plant Ecology*, 163(2), 139–154.
- Breshears, D. D., Huxman, T. E., Adams, H. D., Zou, C. B., & Davison, J. E. (2008). Vegetation synchronously leans upslope as climate warms. *Proceedings of the National Academy of Sciences of the United States of America*, 105(33), 11591–11592. <https://doi.org/10.1073/pnas.0806579105>
- Cannone, N., Sgorbati, S., & Guglielmin, M. (2007). Unexpected impacts of climate change on alpine vegetation. *Frontiers in Ecology and the Environment*, 5(7), 360–364.
- Chen, I. C., Hill, J. K., Ohlemüller, R., Roy, D. B., & Thomas, C. D. (2011). Rapid range shifts of species associated with high levels of climate warming. *Science*, 333(6045), 1024–1026.
- Cooley, D., & Barcelos, P. (2018). Googleway. Retrieved from <https://cran.r-project.org/web/packages/googleway/index.html>
- Costin, A. B., Gray, M., Totterdell, C. J., & Wimbush, D. J. (2000). *Kosciuszko alpine flora*. CSIRO Publishing.
- Dallas, T., Decker, R. R., & Hastings, A. (2017). Species are not most abundant in the centre of their geographic range or climatic niche. *Ecology Letters*, 20, 1526–1533. <https://doi.org/10.1111/ele.12860>
- Descombes, P., Pitteloud, C., Glauser, G., Defosse, E., Kergunteuil, A., Allard, P.-M., Rasmann, S., & Pellissier, L. (2020). Novel trophic interactions under climate change promote alpine plant coexistence. *Science*, 370(6523), 1469–1473.
- Dirnböck, T., Essl, F., & Rabitsch, W. (2011). Disproportional risk for habitat loss of high-elevation endemic species under climate change. *Global Change Biology*, 17(2), 990–996.
- Doherty, M. D., Wright, G., & McDougall, K. L. (2015). The flora of Kosciuszko National Park, New South Wales: Summary and overview. *Cunninghamia*, 15, 13–68.
- Dormann, C. F., & Woodin, S. J. (2002). Climate change in the Arctic: Using plant functional types in a meta-analysis of field experiments. *Functional Ecology*, 16(1), 4–17. <https://doi.org/10.1046/j.0269-8463.2001.00596.x>
- Environmental Resources Information Network (ERIN) (2018). *Collaborative Australian Protected Areas Database (CAPAD) 2016*. Department of the Environment and Energy.
- Friedman, A. R., Hwang, Y. T., Chiang, J. C. H., & Frierson, D. M. W. (2013). Interhemispheric temperature asymmetry over the twentieth century and in future projections. *Journal of Climate*, 26(15), 5419–5433. <https://doi.org/10.1175/JCLI-D-12-00525.1>
- Gallagher, R. V., Hughes, L., & Leishman, M. R. (2009). Phenological trends among Australian alpine species: Using herbarium records to identify climate-change indicators. *Australian Journal of Botany*, 57, 1–9. <https://doi.org/10.1071/BT08051>
- Gaston, K. J., Blackburn, T. M., Greenwood, J. J. D., Gregory, R. D., Quinn, R. M., & Lawton, J. H. (2000). Abundance-occupancy relationships. *Journal of Applied Ecology*, 37, 39–59. <https://doi.org/10.1046/j.1365-2664.2000.00485.x>
- Gibson-Reinemer, D. K., & Rahel, F. J. (2015). Inconsistent range shifts within species highlight idiosyncratic responses to climate warming. *PLoS One*, 10(7), e0132103. <https://doi.org/10.1371/journal.pone.0132103>
- Grabherr, G., Gottfried, M., & Pauli, H. (1994). Climate effects on mountain plants. *Nature*, 369(448), <https://doi.org/10.1038/369448a0>
- Grabherr, G., Gottfried, M., & Pauli, H. (2010). Climate change impacts in alpine environments. *Geography Compass*, 4(8), 1133–1153. <https://doi.org/10.1111/j.1749-8198.2010.00356.x>
- Green, K., & Venn, S. (2012). Tree-limit ribbons in the snowy mountains, Australia: Characterization and recent seedling establishment. *Arctic, Antarctic, and Alpine Research*, 44(2), 180–187. <https://doi.org/10.1657/1938-4246-44.2.180>
- Halloy, S. R. P., & Mark, A. F. (2003). Climate-change effects on alpine plant biodiversity: A New Zealand perspective on quantifying the threat. *Arctic, Antarctic, and Alpine Research*, 35(2), 248–254.
- Hennessy, K., Whetton, P., Smith, I., Bathols, J., Hutchinson, M., & Sharples, J. (2003). *The impact of climate change on snow conditions in mainland Australia*. CSIRO Atmospheric Research.
- Hughes, L. (2011). Climate change and Australia: Key vulnerable regions. *Regional Environmental Change*, 11(1), 189–195. <https://doi.org/10.1007/s10113-010-0158-9>
- Jiménez-García, D., Li, X., Lira-Noriega, A., & Peterson, A. T. (2021). Upward shifts in elevational limits of forest and grassland for Mexican volcanoes over three decades. *Biotropica*, 53, 798–807. <https://doi.org/10.1111/btp.12942>
- Jump, A. S., Huang, T. J., & Chou, C. H. (2012). Rapid elevational migration of mountain plants in Taiwan and its implications for high elevation biodiversity. *Ecography*, 35(3), 204–210.
- Koenker, R. (2020). *quantreg: Quantile Regression. R package version 5.05*. R Foundation for Statistical Computing. Retrieved from <http://CRAN.R-project.org/package=quantreg>
- Koide, D., Yoshida, K., Daehler, C. C., & Mueller-Dombois, D. (2017). An upward elevation shift of native and non-native vascular plants over 40 years on the island of Hawai'i. *Journal of Vegetation Science*, 28(5), 939–950.
- Konvicka, M., Maradova, M., Benes, J., Fric, Z., & Kepka, P. (2003). Uphill shifts in distribution of butterflies in the Czech Republic: Effects of changing climate detected on a regional scale.

- Global Ecology and Biogeography*, 12(5), 403–410. <https://doi.org/10.1046/j.1466-822X.2003.00053.x>
- La Sorte, F. A., & Jetz, W. (2010). Projected range contractions of montane biodiversity under global warming. *Proceedings of the Royal Society B: Biological Sciences*, 277(1699), 3401–3410.
- Lenoir, J., Gégout, J.-C., Guisan, A., Vittoz, P., Wohlgemuth, T., Zimmermann, N. E., Dullinger, S., Pauli, H., Willner, W., & Svenning, J.-C. (2010). Going against the flow: Potential mechanisms for unexpected downsloperange shifts in a warming climate. *Ecography*, 33(2), 295–303. <https://doi.org/10.1111/j.1600-0587.2010.06279.x>
- Lenoir, J., Gégout, J. C., Marquet, P. A., de Ruffray, P., & Brisse, H. (2008). A significant upward shift in plant species optimum elevation during the 20th century. *Science*, 320(5884), 1768–1771.
- Lenoir, J., & Svenning, J. C. (2015). Climate-related range shifts - A global multidimensional synthesis and new research directions. *Ecography*, 38(1), 15–28. <https://doi.org/10.1111/ecog.00967>
- Lesica, P., & McCune, B. (2004). Decline of arctic-alpine plants at the southern margin of their range following a decade of climatic warming. *Journal of Vegetation Science*, 15(5), 679–690. <https://doi.org/10.1111/j.1654-1103.2004.tb02310.x>
- Liang, Q., Xu, X., Mao, K., Wang, M., Wang, K., Xi, Z., & Liu, J. (2018). Shifts in plant distributions in response to climate warming in a biodiversity hotspot, the Hengduan Mountains. *Journal of Biogeography*, 45(6), 1334–1344. <https://doi.org/10.1111/jbi.13229>
- Lustenhauer, N., Moran, E. V., & Levine, J. M. (2017). Trait correlations equalize spread velocity across plant life histories. *Global Ecology and Biogeography*, 26(12), 1398–1407. <https://doi.org/10.1111/geb.12662>
- McDougall, K. L., & Walsh, N. G. (2007). Treeless vegetation of the Australian Alps. *Cunninghamia*, 10(1), 1–57.
- McGowan, H., Callow, J. N., Soderholm, J., McGrath, G., Campbell, M., & Zhao, J. X. (2018). Global warming in the context of 2000 years of Australian alpine temperature and snow cover. *Scientific Reports*, 8(1), 4394. <https://doi.org/10.1038/s41598-018-22766-z>
- Merilä, J. (2012). Evolution in response to climate change: In pursuit of the missing evidence. *BioEssays*, 34(9), 811–818. <https://doi.org/10.1002/bies.201200054>
- Merry, K., & Bettinger, P. (2019). Smartphone GPS accuracy study in an urban environment. *PLoS One*, 14(7), e0219890. <https://doi.org/10.1371/journal.pone.0219890>
- Moritz, C., Patton, J. L., Conroy, C. J., Parra, J. L., White, G. C., & Beissinger, S. R. (2008). Impact of a century of climate change on small-mammal communities in Yosemite National Park, USA. *Science*, 322(5899), 261–264.
- Morueta-Holme, N., Engemann, K., Sandoval-Acuña, P., Jonas, J. D., Segnitz, R. M., & Svenning, J.-C. (2015). Strong upslope shifts in Chimborazo's vegetation over two centuries since Humboldt. *Proceedings of the National Academy of Sciences of the United States of America*, 112(41), 12741–12745. <https://doi.org/10.1073/pnas.1509938112>
- Parmesan, C. (2006). Ecological and evolutionary responses to recent climate change. *Annual Review of Ecology, Evolution, and Systematics*, 37(1), 637–669. <https://doi.org/10.1146/annurev.ecolsys.37.091305.110100>
- Parmesan, C., & Hanley, M. E. (2015). Plants and climate change: Complexities and surprises. *Annals of Botany*, 116(6), 849–864. <https://doi.org/10.1093/aob/mcv169>
- Parmesan, C., & Yohe, G. (2003). A globally coherent fingerprint of climate change impacts across natural systems. *Nature*, 421(6918), 37–42.
- Parolo, G., & Rossi, G. (2008). Upward migration of vascular plants following a climate warming trend in the Alps. *Basic and Applied Ecology*, 9(2), 100–107. <https://doi.org/10.1016/j.baae.2007.01.005>
- Pepin, N., Bradley, R. S., Diaz, H. F., Baraer, M., Caceres, E. B., Forsythe, N., Fowler, H., Greenwood, G., Hashmi, M. Z., Liu, X. D., Miller, J. R., Ning, L., Ohmura, A., Palazzi, E., Rangwala, I., Schöner, W., Severskiy, I., Shahgedanova, M., Wang, M. B., ... Yang, D. Q. (2015). Elevation-dependent warming in mountain regions of the world. *Nature Climate Change*, 5(5), 424–430.
- Peterson, A. T., Soberón, J., Pearson, R. G., Anderson, R. P., Martinez-Meyer, E., Nakamura, M., & Araújo, M. B. (2011). *Ecological niches and geographic distributions (MPB-49)*. Princeton University Press.
- Pickering, C., Good, R., & Green, K. (2004). *Potential effects of global warming on the biota of the Australian alps*. Australian Greenhouse Office.
- Pickering, C. M., & Venn, S. E. (2013). *Increasing the resilience of the Australian flora to climate change and associated threats: A plant functional traits approach*. National Climate Change Adaptation Research Facility Publishing.
- R Core Team (2019). *R: A language and environment for statistical computing*. Computer software.
- Rehnus, M., Bollmann, K., Schmatz, D. R., Hackländer, K., & Braunisch, V. (2018). Alpine glacial relict species losing out to climate change: The case of the fragmented mountain hare population (*Lepus timidus*) in the Alps. *Global Change Biology*, 24, 3236–3253.
- Rumpf, S. B., Hülber, K., Klöner, G., Moser, D., Schütz, M., Wessely, J., Willner, W., Zimmermann, N. E., & Dullinger, S. (2018). Range dynamics of mountain plants decrease with elevation. *Proceedings of the National Academy of Sciences of the United States of America*, 115(8), 1848–1853. <https://doi.org/10.1073/pnas.1713936115>
- Scherrer, D., & Körner, C. (2009). Infra-red thermometry of alpine landscapes challenges climatic warming projections. *Global Change Biology*, 16(9), 2602–2613. <https://doi.org/10.1111/j.1365-2486.2009.02122.x>
- Scherrer, P., & Pickering, C. M. (2001). Effects of grazing, tourism and climate change on the alpine vegetation of Kosciuszko National Park. *Victorian Naturalist*, 118(3), 93.
- Sritharan, M. S., Hemmings, F. A., & Moles, A. T. (2021). Few changes in native Australian alpine plant morphology, despite substantial local climate change. *Ecology and Evolution*, 11(9), 4854–4865. <https://doi.org/10.1002/ece3.7392>
- Staude, I. R., Navarro, L. M., & Pereira, H. M. (2020). Range size predicts the risk of local extinction from habitat loss. *Global Ecology and Biogeography*, 29(1), 16–25. <https://doi.org/10.1111/geb.13003>
- Thuiller, W., Lavorel, S., Araújo, M. B., Sykes, M. T., & Prentice, I. C. (2005). Climate change threats to plant diversity in Europe. *Proceedings of the National Academy of Sciences of the United States of America*, 102(23), 8245–8250. <https://doi.org/10.1073/pnas.0409902102>
- Verrall, B., Green, K., & Pickering, C. M. (2021). Dynamics in plant diversity and composition on Australian alpine summits over time. *Biodiversity and Conservation*, 30, 1855–1880. <https://doi.org/10.1007/s10531-021-02171-1>
- VicFlora (2016). Flora of Victoria, Royal Botanic Gardens Victoria. Retrieved from <https://vicflora.rbg.vic.gov.au> Last [accessed 25 August 2021]
- Viechtbauer, W. (2010). Conducting meta-analyses in R with the metafor package. *Journal of Statistical Software*, 36(3), 1–48.
- Virkkala, R., & Lehikoinen, A. (2014). Patterns of climate-induced density shifts of species: Poleward shifts faster in northern boreal birds than in southern birds. *Global Change Biology*, 20, 2995–3003. <https://doi.org/10.1111/gcb.12573>
- Wahren, C.-H., Camac, J. S., Jarrad, F. C., Williams, R. J., Papst, W. A., & Hoffmann, A. A. (2013). Experimental warming and long-term vegetation dynamics in an alpine heathland. *Australian Journal of Botany*, 61, 36–51. <https://doi.org/10.1071/BT12234>
- Wallace, J. M., & Hobbs, P. V. (2006). *Atmospheric science: An introductory survey*. Elsevier.
- Walther, G. R. (2010). Community and ecosystem responses to recent climate change. *Philosophical Transactions of the Royal Society B: Biological Sciences*, 365(1549), 2019–2024.



**BIOSKETCH**

All authors are part of the Big Ecology Lab (bigecology.com.au) at the University of New South Wales, Australia. One aspect of research in the Big Ecology Lab focuses on plant responses to climate change, particularly, quantifying if plants have already been responding to changes in climate in the past.

Author contributions: J.A. contributed to methodology design, led the data collection, led the data analysis and led the writing of the manuscript. S.E.E. contributed to the methodology design and data analysis, F.A.H. contributed to data collection, A.T.M. led the conception of ideas and contributed to designing the methodology and data collection. All authors contributed to final manuscript writing and preparation and gave final approval for publication.

**SUPPORTING INFORMATION**

Additional supporting information may be found in the online version of the article at the publisher's website.

**How to cite this article:** Auld, J., Everingham, S. E., Hemmings, F. A., & Moles, A. T. (2022). Alpine plants are on the move: Quantifying distribution shifts of Australian alpine plants through time. *Diversity and Distributions*, 00, 1-13. <https://doi.org/10.1111/ddi.13494>