

A nighttime photograph of a cityscape, likely Los Angeles, with a large, dark, and glowing fire in the sky. The city lights are visible in the foreground and middle ground, and the fire is a large, dark, and glowing mass in the upper half of the image. The text is overlaid on the fire.

FREEWAY COMPLEX FIRE

NOVEMBER 15, 2008



FREEWAY COMPLEX FIRE

- **Date/Time of Alarm:**
Saturday November 15, 2008 Corona 9:01 am OCFA 9:03 am
- **Location of Initial Report:**
W/B 91 Freeway, West of Green River Off-ramp
- **Weather Conditions:**
75 Degrees, 8% Humidity, Winds sustained at 43 mph with gusts to 61 mph
- **Acres Burned:** 30,305 Acres
- **Structures Damaged/Destroyed:** 381 Homes
- **Homes Evacuated:** 9,000 Homes



INITIAL DISPATCH

- 1 Division Chief
- 3 Battalion Chiefs
- 12 engines (1 Strike Team, plus 7 single increment)
- 2 Handcrews
- 3 Helicopters (2 OCFA, 1 OCSD)
- 2 Patrols
- 1 Fire Bulldozer
- 3 Water Tenders



Plus 1 Battalion Chief and 3 engines dispatched by Corona Fire



ADDITIONAL IMMEDIATE RESOURCES

- **Upon initial dispatch ECC – 1 Air Attack, 2 Air Tankers, 1 Helicopter**
- **First Arriving Corona Chief Officer – 3 engines; 1 helicopter**
- **First OCFA Chief Officer - while still enroute to incident**
 - 2 Engine Strike Teams (10 engines)
 - 1 Air Attack, 1 Air Tanker, 1 Helicopter
- **First Anaheim Chief Officer – 3 Engine Strike Teams (15 engines)**
- **First OCFA Chief Officer on Scene**
 - 20 Engine Strike Teams (100 engines)
 - 4 Dozer Strike Teams
 - 4 Type 2 Helicopters
 - 6 Handcrew Strike Teams
 - 4 Water Tenders



INITIAL INCIDENT PRIORITIES

- **Nobody Dies**
- **Nobody is Injured**
- **Minimize Property Damage**
- **Confine Fire to the Box**
- **Plan for Evacuations**





COMMUNITIES THREATENED

- **Corona**
- **Yorba Linda**
- **Anaheim**
- **Brea**
- **Chino Hills State Park**
- **Chino Valley**
- **Olinda Village**
- **Diamond Bar**



Nov 15, 2008 10:00 am



Navigation controls: Play/Pause, Stop, and a progress bar showing 00:15.

© 2009 Tele Atlas

County of San Bernardino

33°53'00.72" N 117°39'52.07" W elev 447 ft

Nov 15, 2008 10:30 am



Brush Canyon

91

WT7

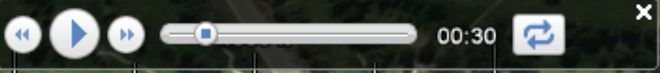
ORC WT16

ORC Crew 18

ORC Helitender

Santa Ana River Trail

Google

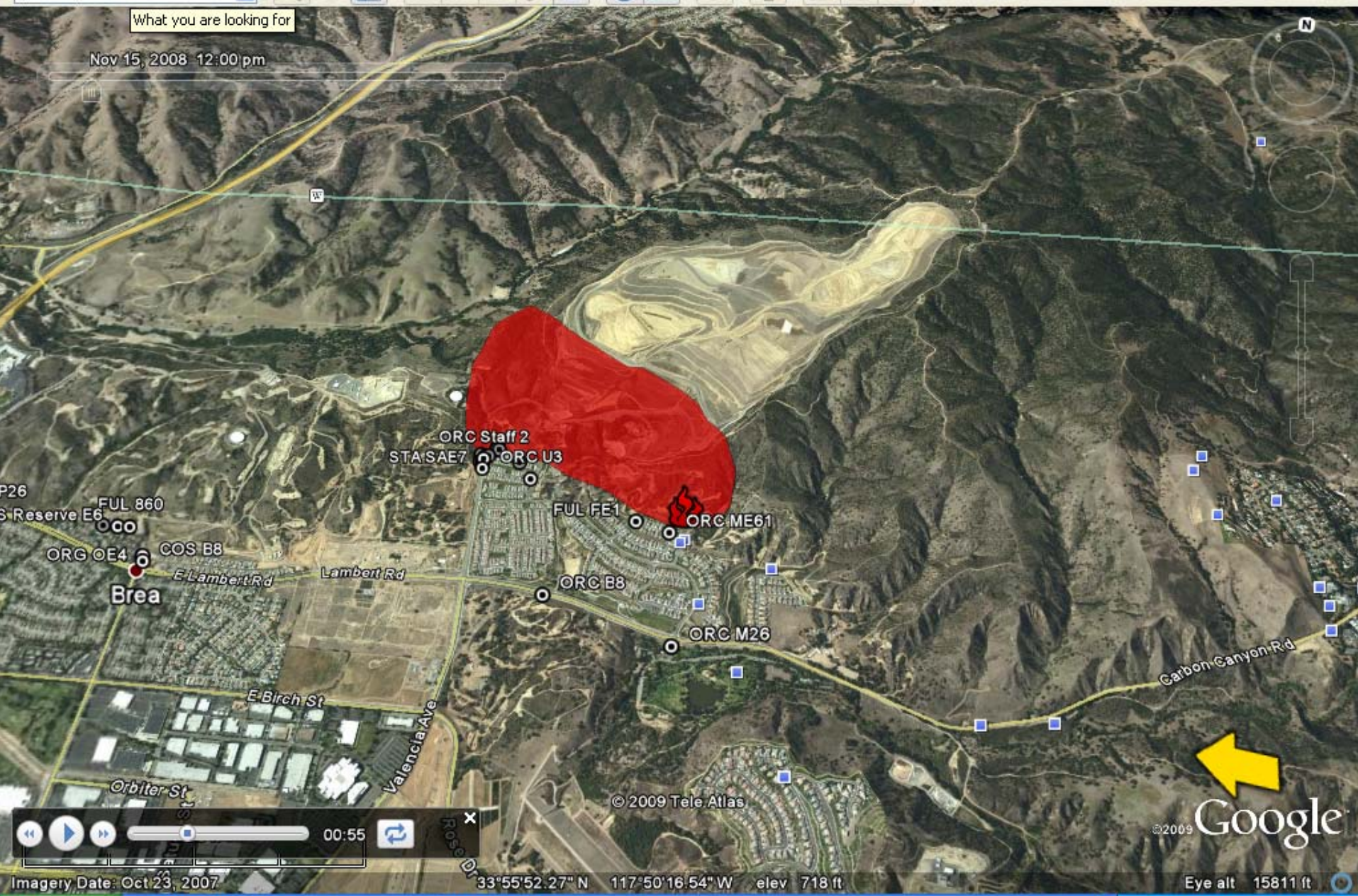


© 2009 Tele Atlas

Imagery Date: Oct 23, 2007

33°52'32.61" N 117°40'42.28" W elev 627 ft

Eye alt 4606 ft



Navigation controls including a play button, a progress slider, and a timestamp of 00:55.

Imagery Date: Oct 23, 2007

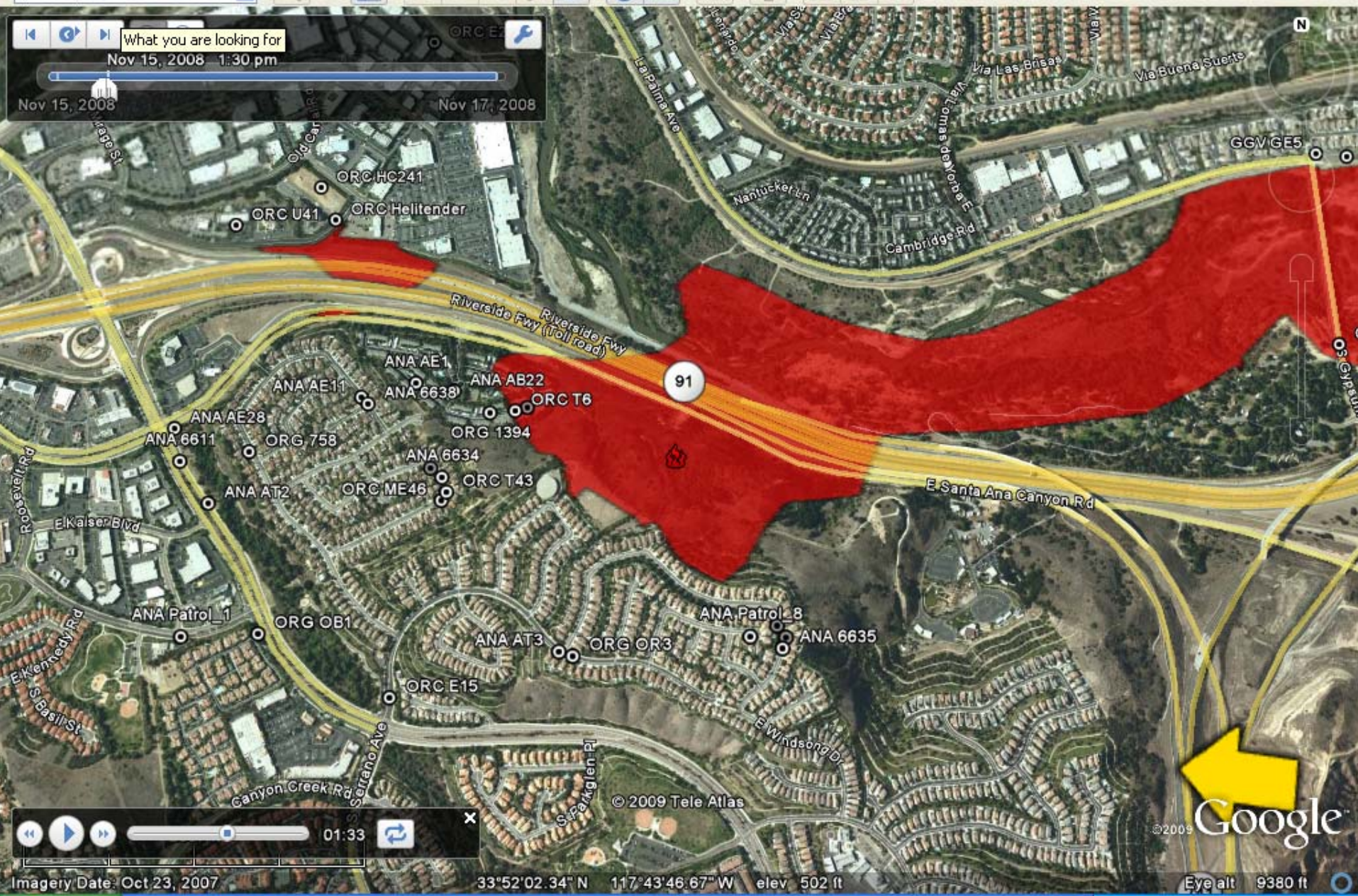
33°55'52.27" N 117°50'16.54" W elev 718 ft

©2009 Google

Eye alt 15811 ft

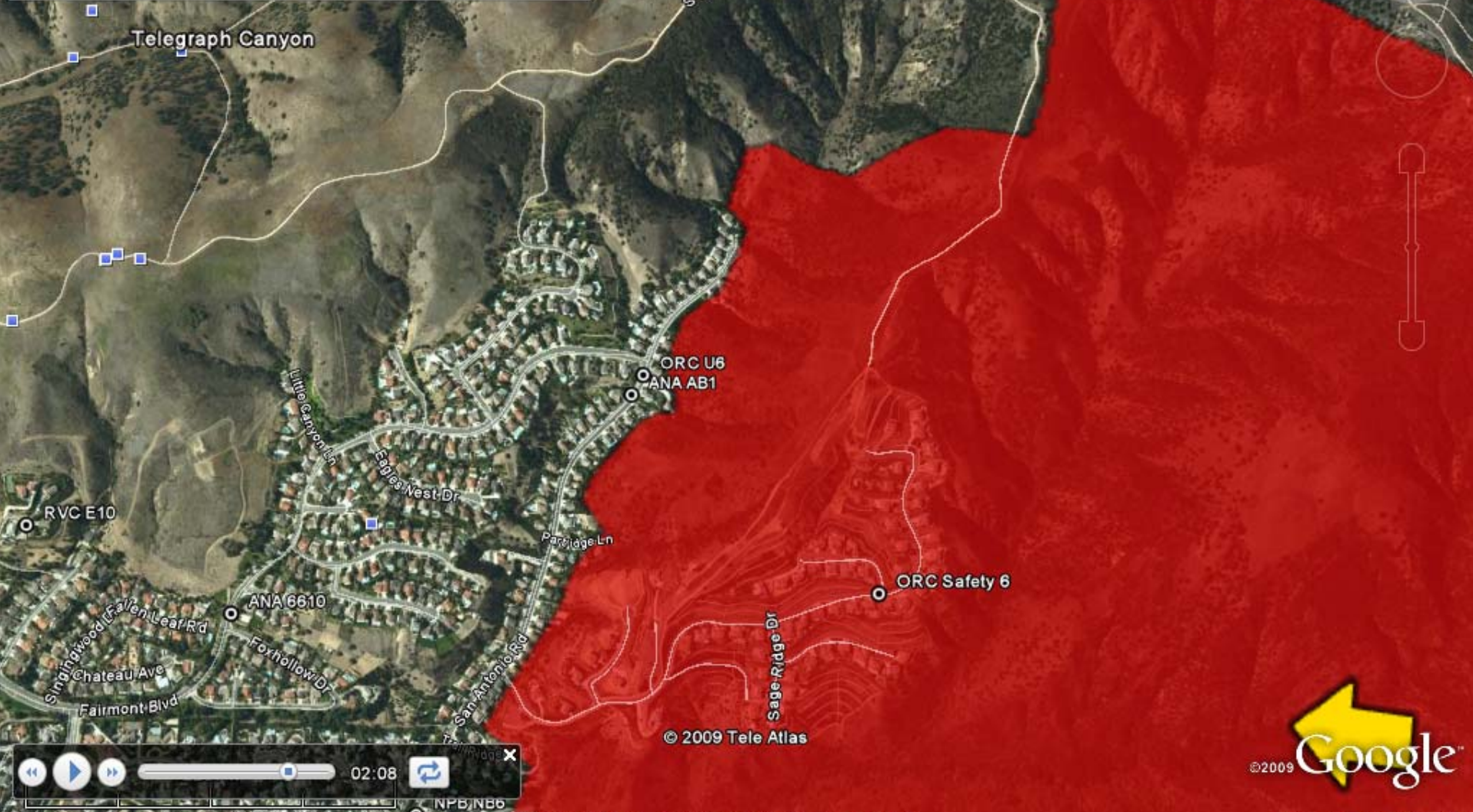
What you are looking for
 Nov 15, 2008 1:30 pm

Nov 15, 2008 Nov 17, 2008



Nov 15, 2008 4:00 pm

Nov 15, 2008 Nov 17, 2008

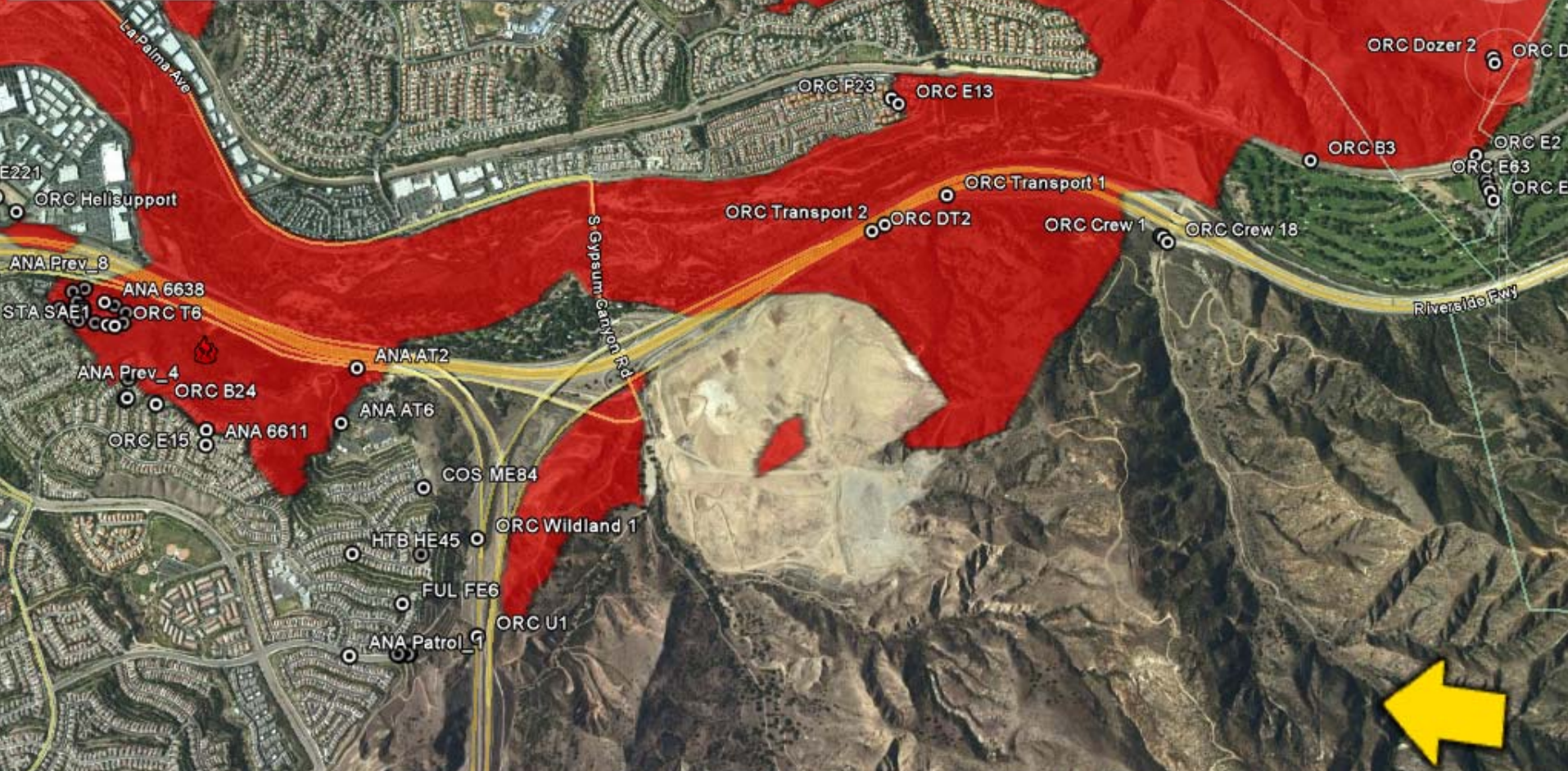


02:08

33°55'01.61" N 117°46'05.47" W elev 1115 ft

Nov 15, 2008 5:00 pm

Nov 15, 2008 Nov 17, 2008



© 2009 Tele Atlas
County of San Bernardino

©2009 Google

02:13

33°53'07.02" N 117°44'12.01" W elev 498 ft

Eye alt 18397 ft



Nov 16, 2008 12:00 am

142

© 2009 Tele Atlas



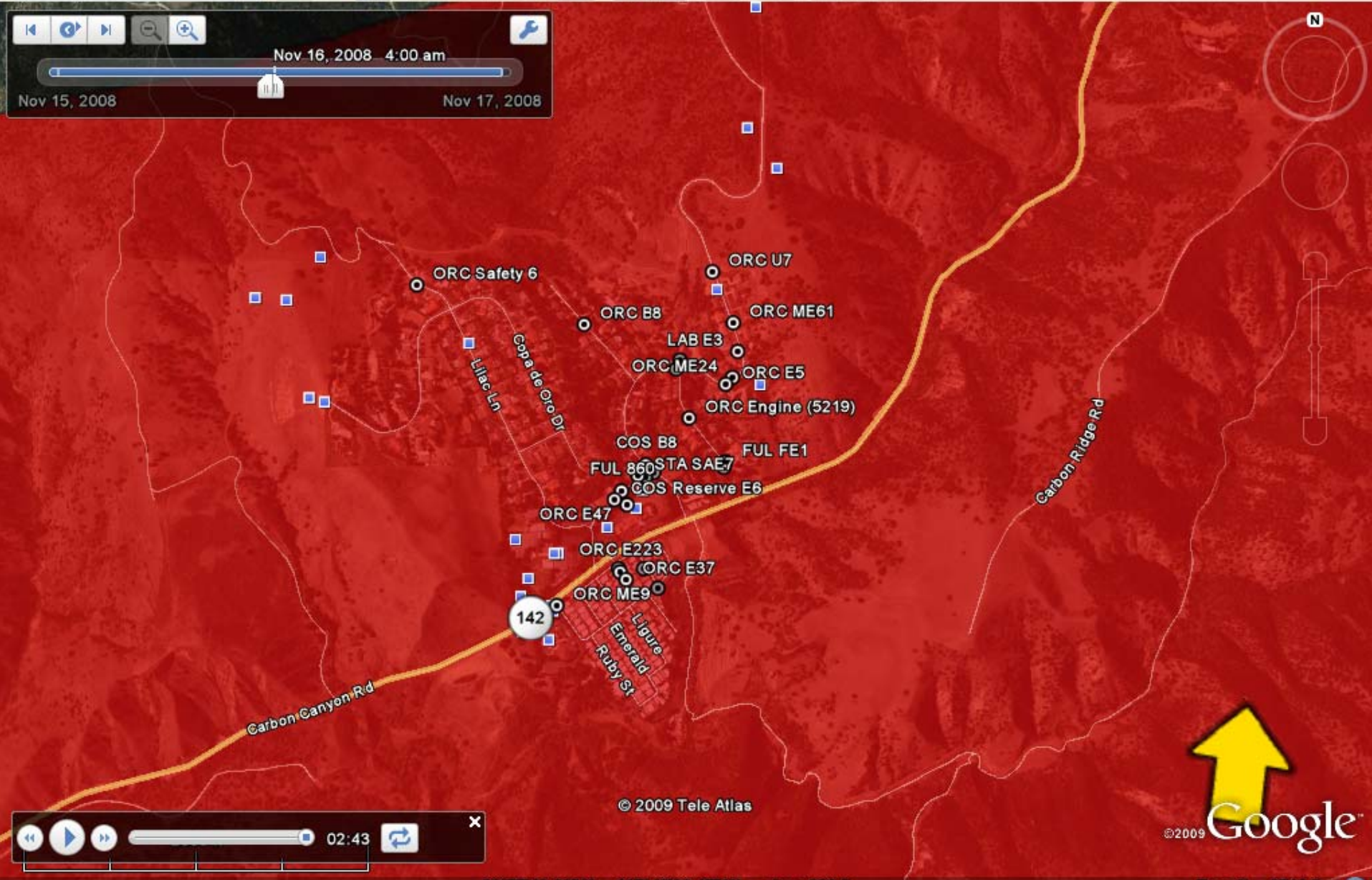
©2009 Google

33°55'18.27" N 117°49'00.87" W elev 532 ft

Eye alt 9518 ft

Nov 16, 2008 4:00 am

Nov 15, 2008 Nov 17, 2008

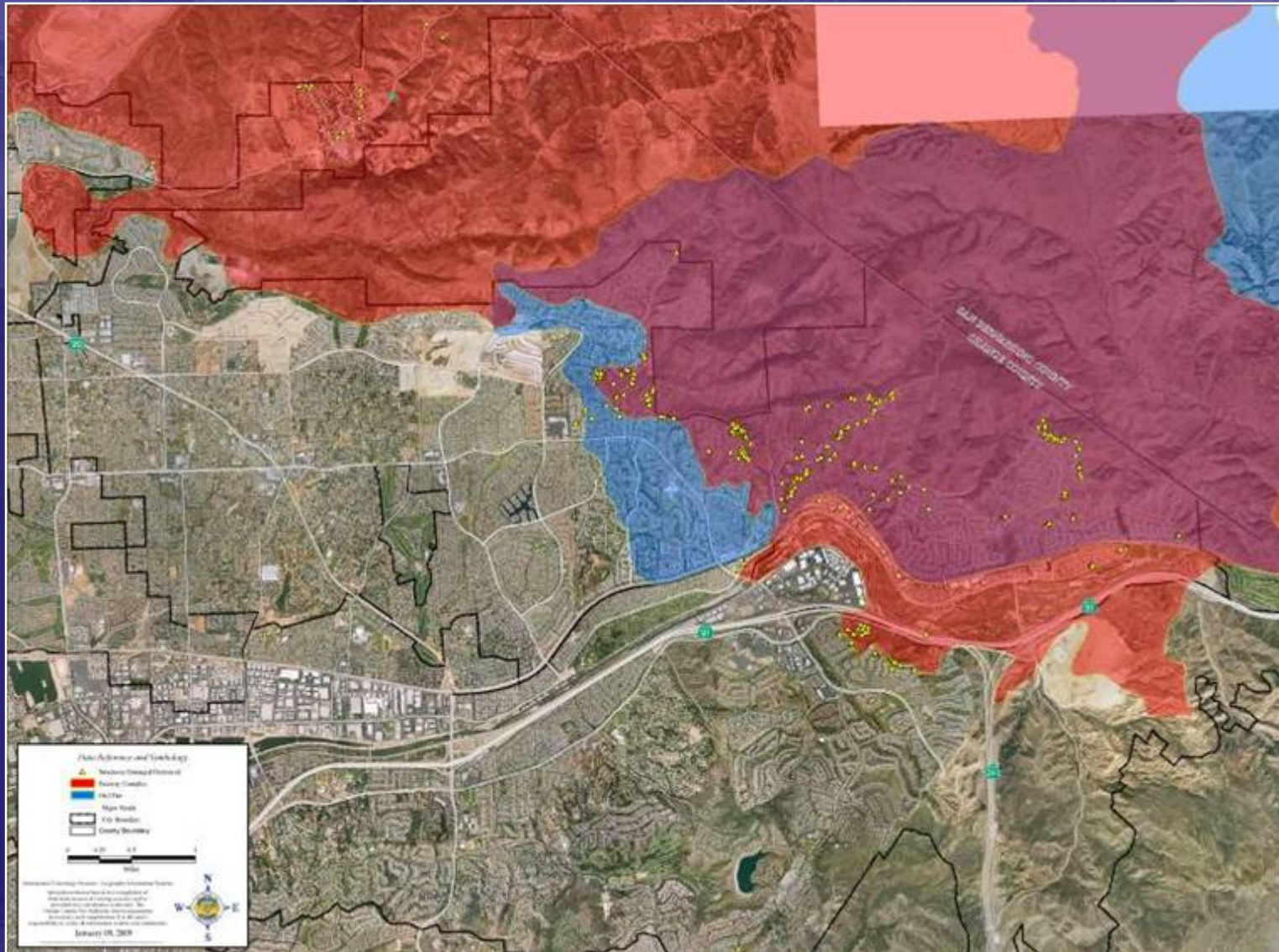


02:43

33°55'43.62" N 117°48'08.15" W elev 690 ft

Eye alt 9518 ft

Map - Owl Fire & Freeway Fire





OCFA



**LOS ANGELES
COUNTY FIRE**



CAL FIRE



CORONA FD



ANAHEIM FD



BREA FD



**CHINO VALLEY
FIRE DISTRICT**



BREA PD



AUTO AID / MUTUAL AID

- **Statewide System to Share Resources**
- **Expanded OCFA DOC**
- **Central Ordering Point**
- **6 EOC's Activated**
 - **Orange County**
 - **Yorba Linda**
 - **Anaheim**
 - **Brea**
 - **Orange**
 - **Chino Hills**





ASSISTING AGENCIES

- Local Government
- State of California Fire Resources (Cal Fire)
- Federal Fire Service – USFS
- Law Enforcement (**Local, State**)
- County of Orange (Sheriff, Animal Control, Parks)
- Transportation Corridor Agencies
- Cal-Trans
- California Department of Corrections
- California Conservation Corps.
- School Districts
- Utility Companies
- Water Districts
- CERT
- OC Rescue Mission
- American Red Cross
- Salvation Army
- Local Ambulance Companies
- Private Vendors
- Trauma Intervention Program



FIRE PREVENTION MEASURES

- **Defensible Space**
- **Non-combustible Construction**
- **Fuel Modifications**





CHALLENGES OF OLDER CONSTRUCTION IN THE WUI

- **Ember Intrusion**
- **Combustible Wood Decks**
- **Vinyl Windows**
- **Interior Combustible Slopes**
- **Open Eaves**
- **Roof Vents**
- **Steep Slope Canyons**
- **Defensible Space & Access**





WATER SUPPLY CHALLENGES

- High Demand
- Areas with Low/No Pressure
- System Shutdown
- Adapting to Challenges
 - Water Tenders
 - CAFS Patrols
 - Fire Engines Pumping Grids





COMMUNITY VOLUNTEER ROLE

- **CERT**
- **Red Cross**
- **Salvation Army**
- **Law and Fire Volunteers**





OCCUPANT LIAISON ROLE

- Victim Assistance

- OCFA

 - Fire Prevention

 - Chaplains

 - Trauma Intervention Program (TIP)





PUBLIC INFORMATION

- **PIO Interviews**
- **Assistance Center**
- **Media Center – 6,000 phone calls**
- **OCFA Web-Site – 1.4 million hits per day**





INCIDENT COSTS

- **Cost of Freeway Complex Fire: \$16.1 Million**
- **Fire Management Assistance Grant**
- **Peak Fire Personnel Assigned: 3,800**
- **Cost Share Agreement**
- **Total OCFA Costs after Reimbursement: \$33,000**



FIRE SUPPRESSION REPAIR

- **Reduction of Damage**
- **Coordination with Landowners**





WINTER STORM PREPARATION

- **Burn Area Recovery Team**
- **Multi-Agency Effort**
- **Strong City Coordination**
- **Response Readiness**
- **Community Involvement**





2007 SANTIAGO FIRE LESSONS

- **Patrols with CAFS**
- **Occupant Liaison Program**
- **CERT**
- **Unified Command**
- **Law Enforcement Partner**
- **Repopulation of Residents**



2008 Freeway Complex Fire AAR

Purpose

To provide a quality assurance review of the efforts leading up to the fire, actions during the fire, and post-fire recovery.



2008 Freeway Complex Fire AAR

3 Distinct Areas of Review

- **Mitigation/Preparation**
- **Prevention**
- **Response**



2008 Freeway Complex Fire AAR

MITIGATION / PREPARATION

Permanent measures that can be put into place over time to better prepare communities against wildfire

Defensible Space

Construction Features



2008 Freeway Complex Fire AAR

PREVENTION

Ongoing actions taken to ensure compliance with mitigation measures, development of community collaboration efforts, and community education

Maintenance Programs

Public Education

Community Preparation



2008 Freeway Complex Fire AAR

RESPONSE

Actions directly related to the deployment of resources, both prior to and during emergencies, which are necessary for management of an incident.



2008 Freeway Complex Fire AAR

LESSONS LEARNED

- **Ember Intrusion**
- **Water Supply Challenges**
- **EOC Coordination**
- **Mass Notifications**
- **Repopulation of Residents**
- **Radio Communications**



Questions

?