

ABIES



© - josef hlasek  
www.hlasek.com  
Ciboria rufofusca bj2348

*Ciboria rufofusca*



*Rutstroemia elatina*



Copyright (c) 2009 Jean-Luc Pasclotto

*Exidiopsis grisea*



*Lachnellula calyciformis*



© - josef hlasek  
www.hlasek.com  
Aleurodiscus amorphus by5884

*Aleurodiscus amorphus*



Camarops tubulina, 28.10.-9.2013  
© Petr Mückstein  
www.bio-foto.com

*Camarops tubulina*



Trichaptum abietinum



Pseudoplectania melaena



Phellinus hartigii

**ACER PSEUDOPLATANUS**



*Rhytisma acerinum*



*Dasyscyphus rhytismatis*



*Mycosphaerella punctiformis*



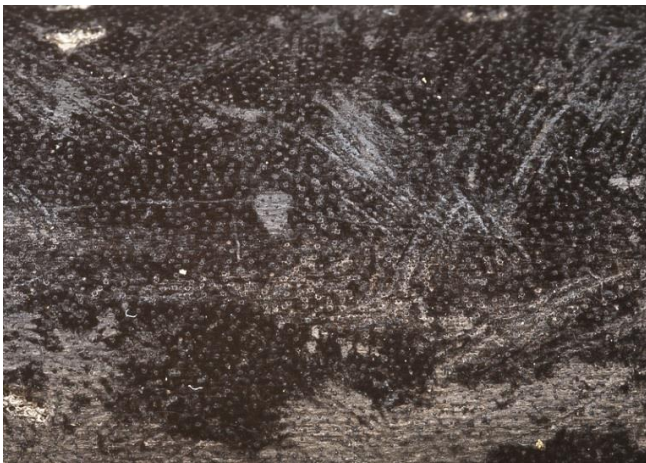
*Pyrenopeziza petiolaris*



*Gnomonia cerastis*



*Hymenochaete carpatica*



*Eutypa acharii*



*Hypoxylon howeianum*

**URTICA DIOICA**



*Calloria neglecta*



*Leptoshaeria acuta*



*Dasyscyphus sulphureus*



*Aporhytisma urticae*



**CALTHA PALUSTRIS:** *Botryotinia calthae*

ALNUS



*Rutstroemia conformata*



*Ciboria amentacea*



*Pezizella alniella*



*Diatrype bullata*



*Diatrypella favacea*



*Eutypella alnifraga*



*Vuilleminia comedens*



*Pyrenopeziza (Mollisia) benesuada*



*Tapesia fusca*



*Tympanis alnea*



*Inonotus rheades*

**BETULA**



*Ciboria betulae*



*Hypoxylon multiforme*



*Diatrypella favacea*



*Melogramma bulliardii*



*Piptoporus betulinus*



**POPULUS TREMULA:** *Ciboria caucis*



Drepanopeziza



Pezizella gemmarum



Encoelia fascicularis



Peniophora polygonia



Peniophora violaceo-livida



Phellinus tremulae



**Corylus avellana**



*Ciboria caucis*, *C. coryli*



*Dichomitus campestris*



*Hypoxylon fuscum*



*Vuilleminia coryli*



*Nectria coryli*



*Eutypa flavovirens*



Encoelia furfuracea



Diatrypella favacea



Melogramma bulliardii



Hypoxylon howeanum

## TARAXACUM



Puccinia variabilis



Synchytrium taraxacii

*Fagus sylvatica*



*Capitotricha fagiseda*

*Lachnum virgineum*



*Diatrype disciformis*

*Diatrype decorticata*



*Hypoxylon cohaerens*

*Hypoxylon fragiforme*



*Peniophora cinerea*



*Mycosphaerella punctiformis*

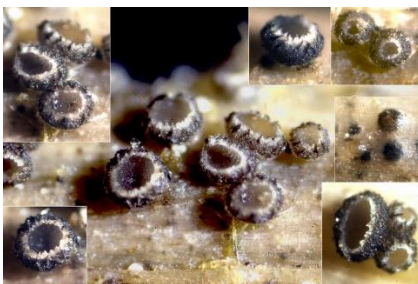


*Ustulina deusta*



*Nectria coccinea*

**MERCURIALIS PERENNIS**



*Pyrenopeziza mercurialis*



*Synchytrium mercurialis*



*Melampsora populnea*

*Picea abies*



*Strobilurus esculentus*

*Mycena strobilicola*



*Rutstroemia bulgarioides*

*Sirococcus conigenus*



*Exidia pithya*

*Lophodermium piceae*



*Exidiopsis calcea*



KAPRADINY: rez Milesina



*Camarops tubulina*



*Amylostereum aureolatum*



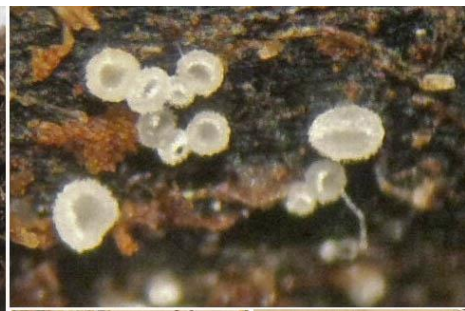
*Crocicreas cyathoides*



*Rhopoglyphus filicinus*



*Micropodia pterigena*



*Pinus sylvestris*



*Strobilurus stephanocystis*



*Strobilurus tenacellus*



*Lophodermium conigenum*



*Tapesia strobilicola*



*Pezizella chionea*



*Auriscalpium vulgare*



*Exidia saccharina*



*Stereum sanguinolentum*



*Lophodermium pinastri*, *L. pini-excelsae*



*Peniophora pini*



**Anemone nemorosa:** *Dumontia nemorosa*, *Urocystis anemones*, *Synchytrium anemones*



QUERCUS



**Ciborinia hirtella**



**Coccomyces dentatus**



**Pocillum cesatii**



**Pycnopeziza pachyderma**



**Guignardia punctoidea**



**Mycosphaerella punctiformis**



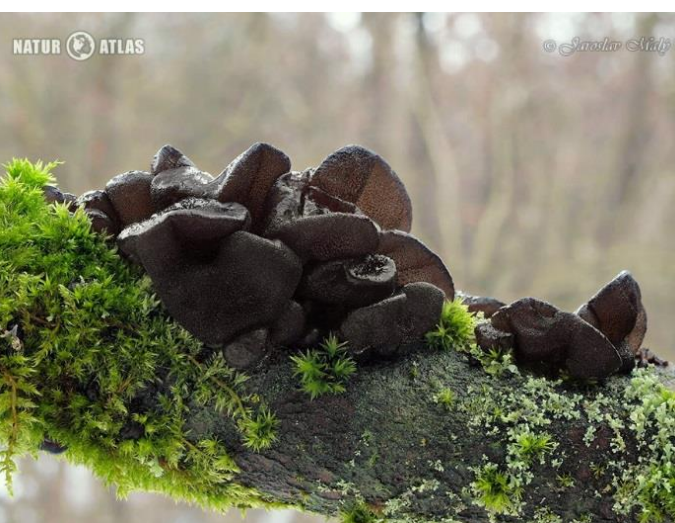
**Arachnopeziza aurelia**



**Hymenoscyphus fructigenus**



**Bulgaria inguinans**



**Exidia truncata**



**Chlorociboria aeruginascens**



**Colpoma quercinum**



**Dasyscyphus crystallinus**



**Dasyscyphus niveus**



**Dematioscypha dematiicola**



**Durella commutata**



**Eriopezia caesia**



**Haglundia elegantior**



**Hyaloscypha hyalina**



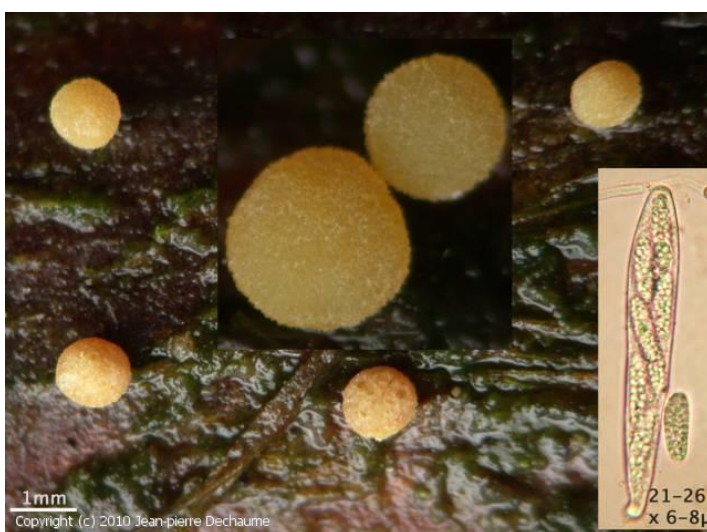
**Mollisia discolor**



**Peniophora quercina**



**Stereum gausapatum**



**Pezicula cinnamomea**



**Rustroemia firma**



**Vibrissea flavovirens**



**Botryosphaeria melanops**



**Diatrypella quercina**



**Pseudovalsia umbonata**



**Hymenochete tabacina**

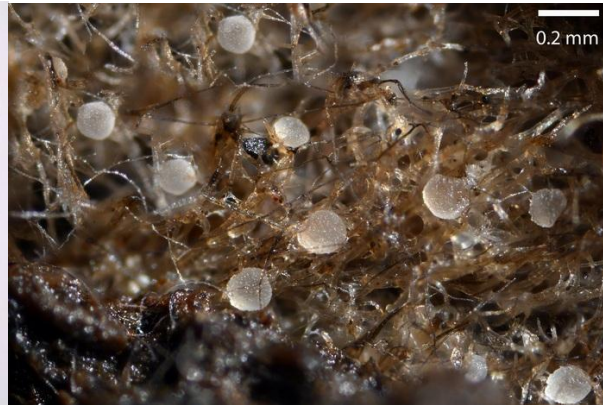


**Daedalea quercina**

SALIX



*Rhytisma salicinum*



*Calycelina indumenticola*



*Hymenoscyphus caudatus*



*Pezizella amenti*



*Diatrype bullata*



*Exidia recisa*



Peniophora violaceo-livida



Peniophora cinerea



Tremella mesenterica



Phellinus conchatus



Trametes suaveolens



Uromyces ficariae



Entyloma ficariae

TILIA



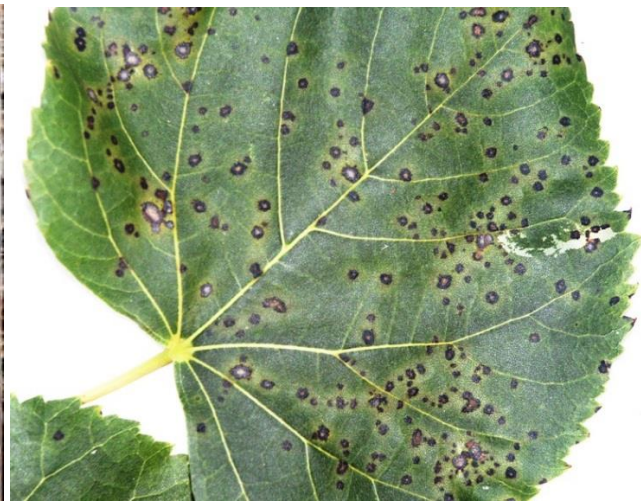
*Exidia cartilaginea*



*Encoelia tiliacea*



*Amphiporthe tiliae* (*Cryptodiaporthe hranicensis*)



*Cercospora tiliae*



*Peniophora rufomarginata*



*Pseudomassaria chondrospora*





Lamproconium desmazieresii



Rabenhorstia tiliae (Hercospora tiliae)