

# The Gallery

WORKS BY ALUMNI VISUAL ARTISTS



BRANKO MEDINICA '72  
**INTERNATIONAL SCULPTOR, BIRMINGHAM**

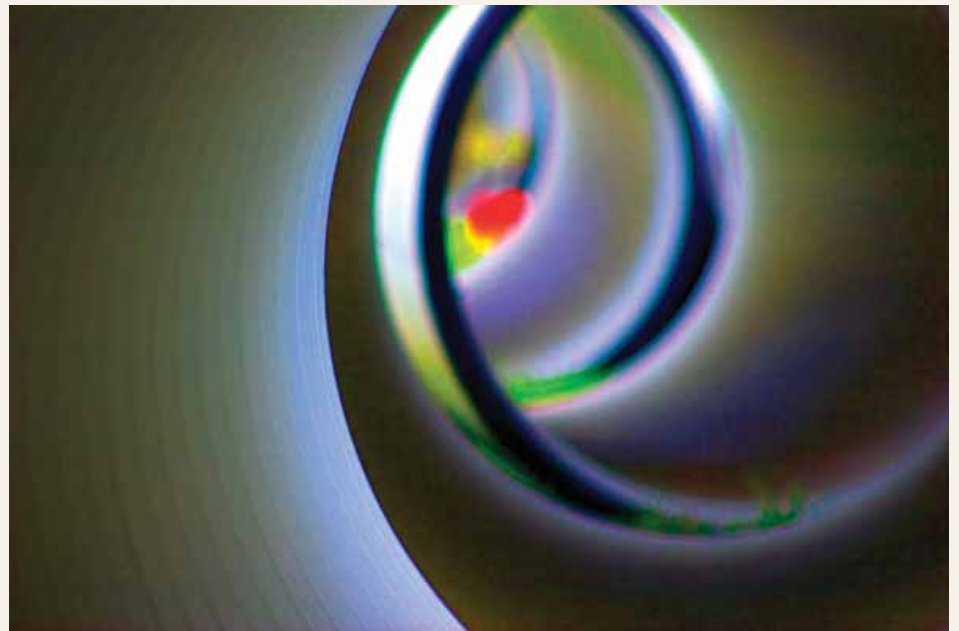
*Sacred Tears*, cast bronze, 8'

"This piece installed in Tuscumbia, Alabama, is a memorial to the forced march of the Native Americans during the Trail of Tears. The essence of my work evolves from an exploration of both the physical and psychological movement in man in interaction with the spectrum of influences inherent in nature. ... I incorporate fluid forms, minimal line, segments of motion, or combinations of these and other elements to create a visual dialogue of movement."

JOHN BAXTER '02  
**SENIOR MANAGER,  
THOMAS MOORE STUDIOS,  
BALTIMORE, MD.**

*Falling Away*, color photograph

"Inspired by the natural architectural features that surround me, this piece speaks of the color and vibrance of the true 'inner city.' Most residents bypass everyday infrastructure without a thought, while some revel in the ingenuity and commitment of generations of laborers who built the sewers, waterways, and runoffs in any major city. This photograph depicts an \$8.3 million sewer renovation in Baltimore ... from the inside out."



JIM NEEL '71  
**ASSISTANT PROFESSOR OF ART AND DIRECTOR  
OF THE DURBIN GALLERY, BIRMINGHAM-SOUTHERN  
COLLEGE**

*Dejar las Huellas en la Tierra Dura (To Leave One's Mark  
in the Hard Earth)*, installation, terra cotta, black river stones,  
and petroleum oil, 120" in diameter

"The footprints of a small child track an arc across a field of wet clay. The clay dries and hardens in the sun, preserving the path. A pool of black petroleum oil seems to float in the middle of the cracked and broken circle, a perfect elliptical mirror. The child's footprints in the clay reference the track of Australopithecus Afarensis prints discovered in Laetoli, Tanzania—the dried, cracked clay the plight of cultures across the globe that are marginalized by the unchecked consumption of the technologically driven."