

# Florida Natural Areas Inventory

Tracking Florida's  
Biodiversity





# Mission

Collect, interpret, and disseminate ecological information critical to the conservation of Florida's biological diversity



# Program Background

- established in 1981 as part of TNC
- now part of Florida State University, FREAC
- entirely contract-funded
- long term relationship with Florida DEP and FWC
- part of a nationwide network of Natural Heritage Programs





## FNAI Staff

### Special expertise:

- botany
- herpetology
- ornithology
- entomology
- coastal ecology
- community ecology
- computer data bases and GIS
- conservation and environmental land use planning





# Rare Species Records

- Scientific and common names
- Global and state rarity ranks
- Federal and state legal status
- Location information
- Description of the site
- Specific information about the plant or animal
- Date of observation
- Surveyor

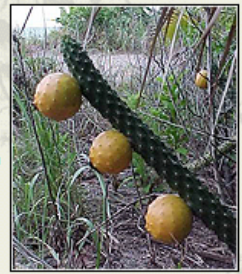
# FNAI and Invasive plants

- Started building a database in 2003
- Primarily funded by FWC's Invasive Plant Section
- more than 209,000 observation records on more than 2000 managed areas
- On-line data forms
- Downloadable data





# invasive species



Controlling invasive, non-native plants is essential to the protection of Florida's biodiversity. Introduced species can displace native plants and animals, change the structure of natural communities, and impact the ecological functions of ecosystems.

## iMapInvasives

To increase access to invasive species data, facilitate data management, and simplify data summary FNAI has helped to develop the iMapInvasives web application, a national, GIS-based, invasive species mapping tool. The core of the Florida Invasive Plants Geodatabase (FLInv), a spatial database of invasive plant occurrences on all of the state's public conservation lands which FNAI built starting in 2003. The FLInv database contains approximately 200,000 records compiled from data submitted by resource managers and supplemented by FNAI field surveys. FNAI hopes to continue to build on this dataset with submission of data to iMapInvasives. Biologists, land managers, amateur naturalists and all other interested parties are encouraged to join in this effort.

Please visit the **iMapInvasives** website for more information. Unregistered users can view basic plant distribution maps or **register for a free account** which will allow viewing of precise location data and submission of new data.

- Benefits of online mapping of invasive species in iMapInvasives:
- Simplifies sharing of data across agency boundaries
  - Streamlines the tracking of management progress
  - Supports the ability to summarize species distribution and abundance

[CLICK HERE](#) to log into the FL iMapInvasives site or register for a new account.

## Florida Specific Resources

- [FL iMapInvasives Terrestrial Plant Observation and Assessment Form \(49 KB\).](#)
- [FL iMapInvasives Terrestrial Plant Observation and Assessment Data Dictionary \(Trimble\) \(7 KB\).](#)

**Please Note:** FNAI shares Florida invasive plant data with the University of Georgia's Early Detection and Distribution Mapping System (EDDMapS), if you send data to FNAI or submit it to **iMapInvasives**, you don't have to submit it to EDDMapS too.

## Viewing and Downloading Existing Data

Data collected as part of the FLInv project are available for download below. A file geodatabase is the preferred format for ArcGIS 9.2 and above users. For more information on geodatabases, please visit ESRI's [website](#). Polygon and point files contain distinct datasets with no duplication of infestations. The metadata provides a detailed description of the feature classes and shapfiles.

File geodatabase with metadata	<a href="#">FLINV_FileGDB_20110517.zip</a>	(18.1 MB)
Shapefiles (with metadata)	<a href="#">FLINV_shp_20110517.zip</a>	(32.5 MB)
Point feature metadata	<a href="#">FLINVpt_20110517.htm</a>	(37 KB)
Polygon feature metadata	<a href="#">FLINVpoly_20110517.htm</a>	(38 KB)

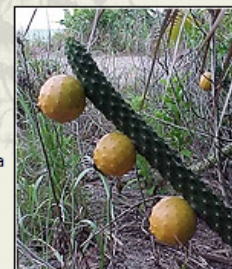
- Home
- Species & Communities
  - Field Guides
  - Biodiversity Matrix
  - Tracking List
  - Natural Communities
  - Ecological Surveys
  - Submit Data
- Conservation Lands
  - Interactive Map
  - FL Forever Projects Map
  - Summary Report (PDF)
- Invasive Species**
  - iMapInvasives
- Planning & Analysis
  - Florida Forever
  - CLIP
- Data Requests
  - FCT Guidelines
  - GIS Data
- Donate



1018 Thomasville Road  
Suite 200-C  
Tallahassee, FL 32303  
Phone: (850) 224-8267  
Fax: (850) 681-9364



## invasive species



### Home

### Species & Communities

- Field Guides
- Biodiversity Matrix
- Tracking List
- Natural Communities
- Ecological Surveys
- Submit Data

### Conservation Lands

- Interactive Map
- FL Forever Projects Map
- Summary Report (PDF)

### Invasive Species

- iMapInvasives

### Planning & Analysis

- Florida Forever
- CLIP

### Data Requests

- FCT Guidelines
- GIS Data

### Donate



1018 Thomasville Road  
Suite 200-C  
Tallahassee, FL 32303  
Phone: (850) 224-8207  
Fax: (850) 681-9364

Controlling invasive, non-native plants is essential to the protection of Florida's biodiversity. Introduced species can displace native plants and animals, change the structure of natural communities, and impact the ecological functions of ecosystems.

### iMapInvasives

To increase access to invasive species data, facilitate data management, and simplify data summary FNAI has helped to develop the iMapInvasives web application, a national, GIS-based, invasive species mapping tool. The core of the Florida iMapInvasives dataset is the Florida Invasive Plants Geodatabase (FLInv), a spatial database of invasive plant occurrences on all of the state's public conservation lands which FNAI built starting in 2003. The FLInv database contains approximately 200,000 records compiled from data submitted by resource managers and supplemented by FNAI field surveys. FNAI hopes to continue to build on this dataset with submission of data to iMapInvasives. Biologists, land managers, amateur naturalists and all other interested parties are encouraged to join in this effort.

Please visit the **iMapInvasives** website for more information. Unregistered users can view basic plant distribution maps or **register for a free account** which will allow viewing of precise location data and submission of new data.

Benefits of online mapping of invasive species in iMapInvasives:

- Simplifies sharing of data across agency boundaries
- Streamlines the tracking of management progress
- Supports the ability to summarize species distribution and abundance

**CLICK HERE** to log into the FL iMapInvasives site or register for a new account.

### Florida Specific Resources

**FL iMapInvasives Terrestrial Plant Observation and Assessment Form (49 KB).**

**FL iMapInvasives Terrestrial Plant Observation and Assessment Data Dictionary (Trimble) (7 KB).**

**Please Note:** FNAI shares Florida invasive plant data with the University of Georgia's Early Detection and Distribution Mapping System (EDDMapS), if you send data to FNAI or submit it to **iMapInvasives**, you don't have to submit it to EDDMapS too.

### Viewing and Downloading Existing Data

Data collected as part of the FLInv project are available for download below. A file geodatabase is the preferred format for ArcGIS 9.2 and above users. For more information on geodatabases, please visit ESRI's **website**. Polygon and point files contain distinct datasets with no duplication of infestations. The metadata provides a detailed description of the feature classes and shapefiles.

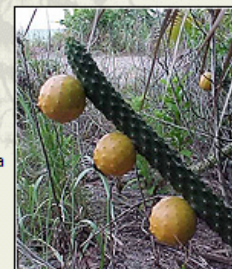
File geodatabase with metadata	<a href="#">FLINV_FileGDB_20110517.zip</a>	(18.1 MB)
Shapefiles (with metadata)	<a href="#">FLINV_shp_20110517.zip</a>	(32.5 MB)
Point feature metadata	<a href="#">FLINVpt_20110517.htm</a>	(37 KB)
Polygon feature metadata	<a href="#">FLINVpoly_20110517.htm</a>	(38 KB)







## invasive species



### Home

### Species & Communities

- Field Guides
- Biodiversity Matrix
- Tracking List
- Natural Communities
- Ecological Surveys
- Submit Data

### Conservation Lands

- Interactive Map
- FL Forever Projects Map
- Summary Report (PDF)

### Invasive Species

- iMapInvasives

### Planning & Analysis

- Florida Forever
- CLIP

### Data Requests

- FCT Guidelines
- GIS Data

### Donate

Controlling invasive, non-native plants is essential to the protection of Florida's biodiversity. Introduced species can displace native plants and animals, change the structure of natural communities, and impact the ecological functions of ecosystems.

### iMapInvasives

To increase access to invasive species data, facilitate data management, and simplify data summary FNAI has helped to develop the iMapInvasives web application, a national, GIS-based, invasive species mapping tool. The core of the Florida iMapInvasives dataset is the Florida Invasive Plants Geodatabase (FLInv), a spatial database of invasive plant occurrences on all of the state's public conservation lands which FNAI built starting in 2003. The FLInv database contains approximately 200,000 records compiled from data submitted by resource managers and supplemented by FNAI field surveys. FNAI hopes to continue to build on this dataset with submission of data to iMapInvasives. Biologists, land managers, amateur naturalists and all other interested parties are encouraged to join in this effort.

Please visit the **iMapInvasives** website for more information. Unregistered users can view basic plant distribution maps or **register for a free account** which will allow viewing of precise location data and submission of new data.

Benefits of online mapping of invasive species in iMapInvasives:

- Simplifies sharing of data across agency boundaries
- Streamlines the tracking of management progress
- Supports the ability to summarize species distribution and abundance

**CLICK HERE** to log into the FL iMapInvasives site or register for a new account.

### Florida Specific Resources

**FL iMapInvasives Terrestrial Plant Observation and Assessment Form (49 KB).**

**FL iMapInvasives Terrestrial Plant Observation and Assessment Data Dictionary (Trimble) (7 KB).**

**Please Note:** FNAI shares Florida invasive plant data with the University of Georgia's Early Detection and Distribution Mapping System (EDDMapS), if you send data to FNAI or submit it to **iMapInvasives**, you don't have to submit it to EDDMapS too.

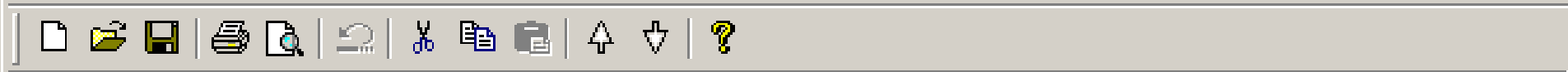
### Viewing and Downloading Existing Data

Data collected as part of the FLInv project are available for download below. A file geodatabase is the preferred format for ArcGIS 9.2 and above users. For more information on geodatabases, please visit ESRI's **website**. Polygon and point files contain distinct datasets with no duplication of infestations. The metadata provides a detailed description of the feature classes and shapefiles.

File geodatabase with metadata	<a href="#">FLINV_FileGDB_20110517.zip</a>	(18.1 MB)
Shapefiles (with metadata)	<a href="#">FLINV_shp_20110517.zip</a>	(32.5 MB)
Point feature metadata	<a href="#">FLINVpt_20110517.htm</a>	(37 KB)
Polygon feature metadata	<a href="#">FLINVpoly_20110517.htm</a>	(38 KB)



1018 Thomasville Road  
Suite 200-C  
Tallahassee, FL 32303  
Phone: (850) 224-8207  
Fax: (850) 681-9364



Name: Template

Comment:

Features:

- InvPlants\_point
- InvPlants\_line
- InvPlants\_polygon
- SurveyPath
- misc\_point

Attributes:

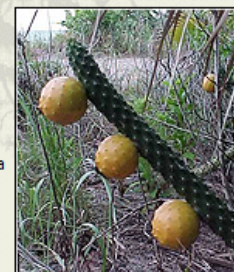
- Field\_ID
- Species
- Distributn
- PctCover
- Maturity
- Landscape
- Native\_Veg
- DisturbTyp
- DisturbSev
- Photo\_Info
- Comments
- SurveyDate
- Surveyor
- Proj/Location

Menu

- Single plant/clump
- Scattered plants
- Linearly scattered
- Scatrd dense patches
- Dominant cover
- Dense monoculture



# invasive species



Controlling invasive, non-native plants is essential to the protection of Florida's biodiversity. Introduced species can displace native plants and animals, change the structure of natural communities, and impact the ecological functions of ecosystems.

## iMapInvasives

To increase access to invasive species data, facilitate data management, and simplify data summary FNAI has helped to develop the iMapInvasives web application, a national, GIS-based, invasive species mapping tool. The core of the Florida iMapInvasives dataset is the Florida Invasive Plants Geodatabase (FLInv), a spatial database of invasive plant occurrences on all of the state's public conservation lands which FNAI built starting in 2003. The FLInv database contains approximately 200,000 records compiled from data submitted by resource managers and supplemented by FNAI field surveys. FNAI hopes to continue to build on this dataset with submission of data to iMapInvasives. Biologists, land managers, amateur naturalists and all other interested parties are encouraged to join in this effort.

Please visit the **iMapInvasives** website for more information. Unregistered users can view basic plant distribution maps or **register for a free account** which will allow viewing of precise location data and submission of new data.

Benefits of online mapping of invasive species in iMapInvasives:

- Simplifies sharing of data across agency boundaries
- Streamlines the tracking of management progress
- Supports the ability to summarize species distribution and abundance

[CLICK HERE](#) to log into the FL iMapInvasives site or register for a new account.

## Florida Specific Resources

[FL iMapInvasives Terrestrial Plant Observation and Assessment Form \(49 KB\).](#)

[FL iMapInvasives Terrestrial Plant Observation and Assessment Data Dictionary \(Trimble\) \(7 KB\).](#)

[FL iMapInvasives Data Standard](#)

**Please Note:** FNAI shares Florida invasive plant data with the University of Georgia's Early Detection and Distribution Mapping System (EDDMapS), if you send data to FNAI or submit it to **iMapInvasives**, you don't have to submit it to EDDMapS too.

## Viewing and Downloading Existing Data

Data collected as part of the FLInv project are available for download below. A file geodatabase is the preferred format for ArcGIS 9.2 and above users. For more information on geodatabases, please visit ESRI's [website](#). Polygon and point files contain distinct datasets with no duplication of infestations. The metadata provides a detailed description of the feature classes and shapefiles.

File geodatabase with metadata	<a href="#">FLINV_FileGDB_20110517.zip</a>	(18.1 MB)
Shapefiles (with metadata)	<a href="#">FLINV_shp_20110517.zip</a>	(32.5 MB)
Point feature metadata	<a href="#">FLINVpt_20110517.htm</a>	(37 KB)
Polygon feature metadata	<a href="#">FLINVpoly_20110517.htm</a>	(38 KB)



1018 Thomasville Road  
Suite 200-C  
Tallahassee, FL 32303  
Phone: (850) 224-8207  
Fax: (850) 681-9364

Name in Data Dictionary	Order in Data Dictionary	Optionality	Record Type in iMap	Name in iMap	Order in iMap	Description	Values / Format
SurveyDate	1	Required	Observation	Step 5 - When	5	date data were collected	
Surveyor	2	Required	Observation	Step 2 - Who	2	name of the person performing the invasives survey	Last name, first name
surveysite	3	Optional	Observation, Assessment, or Treatment	Project Name	3	iMap Project, MA name, or Location	
eval_type	4	Required	Assessment	Evaluation Type	6	type of visit to site	Initial - first observation and assessment of a species in that spot Revisit - observations/assessments on subsequent visits Pre-treatment - only an observation /assessment taken directly before treatment is applied Post-treatment - observation /assessment and evaluation of the targeted invasive species post-treatment
Species	5	Required	Observation	Step4 - What (Species)	4	name of the invasive exotic plant.	Scientific name
Distributn	6	Required	Assessment	Plant Distribution	13	pattern or arrangement of the plants within the infested acreage	Single plant or clump - One individual plant or one small clump of a single species. Scattered plants or clumps - Multiple individual plants or small clumps of a single species scattered within the gross area infested. Scattered dense patches - Dense patches of a single species scattered within the gross area infested. Dominant cover - Multiple plants or clumps of a single species that occupy a majority of the gross area infested. Dense monoculture - Generally a dense stand of a single dominant species that not only occupies more than a majority of the gross area infested, but also covers/excludes other



# Introduction to **iMapInvasives**

*A collaborative web-based solution for  
invasive species data aggregation, mapping,  
and analysis*



# Maps and Data

[Home](#)[Maps & Data](#)[Service](#)[Resources](#)[About](#)

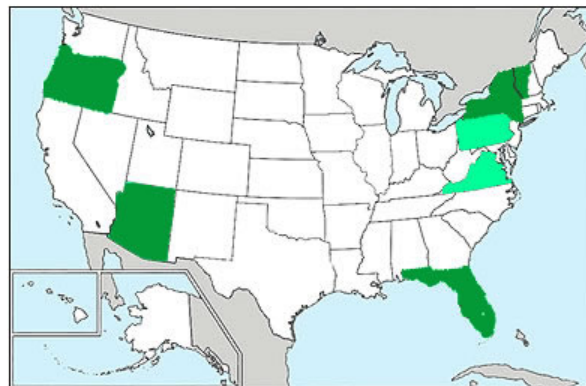
## Welcome to the Public Maps!

The Public Maps display distribution information for featured invasive species by watershed or political jurisdiction (e.g. county)

- Read about the iMapInvasives Project and how your state can participate in the [Service](#) section.
- Read about the functionality available to registered users in the [Functionality](#) section.
- Read about features currently under development in the [Future Plans](#) section.
- If you have comments or questions on the project, please [Contact Us](#).

### Participating States

<b>Arizona</b>	<a href="#">Public Map</a>	<a href="#">Login</a>
<b>Florida</b>	<a href="#">Public Map</a>	<a href="#">Login</a>
<b>New York</b>	<a href="#">Public Map</a>	<a href="#">Login</a>
<b>Oregon</b>	<a href="#">Public Map</a>	<a href="#">Login</a>
<b>Vermont</b>	<a href="#">Public Map</a>	<a href="#">Login</a>
<b>Virginia</b>	<i>Coming Soon</i>	<i>Coming Soon</i>



### States Planning to Participate Soon

- **Pennsylvania**

Contact: Jeff Wagner  
Director  
Pennsylvania Natural Diversity  
Inventory  
800 Waterfront Drive  
Pittsburgh, PA 15222-4718  
412.586.2392



**iMapInvasives** is an online, GIS-based, all-taxa mapping tool allowing natural resources managers and other professionals with invasive species responsibilities the ability to collect, manage, and analyze invasive species data.

- Designed specifically for land managers
- Manage observation / assessment information
- Manage survey information (including absence data)
- Manage treatment data
- Sophisticated GIS and spatial analysis capabilities
- Wide array of on-demand reports
- Batch uploading for partner organizations
- Early detection watch lists and e-mail alerts
- Mobile web site for any web-capable mobile device





**Zoom**

## Invasive Species

### Distribution

#### Featured Species

Animal
  Insect
  Plant
  All

By Common Name

By Scientific Name

[Request an account](#) to see more species

**Layers** County Shown



## Layers

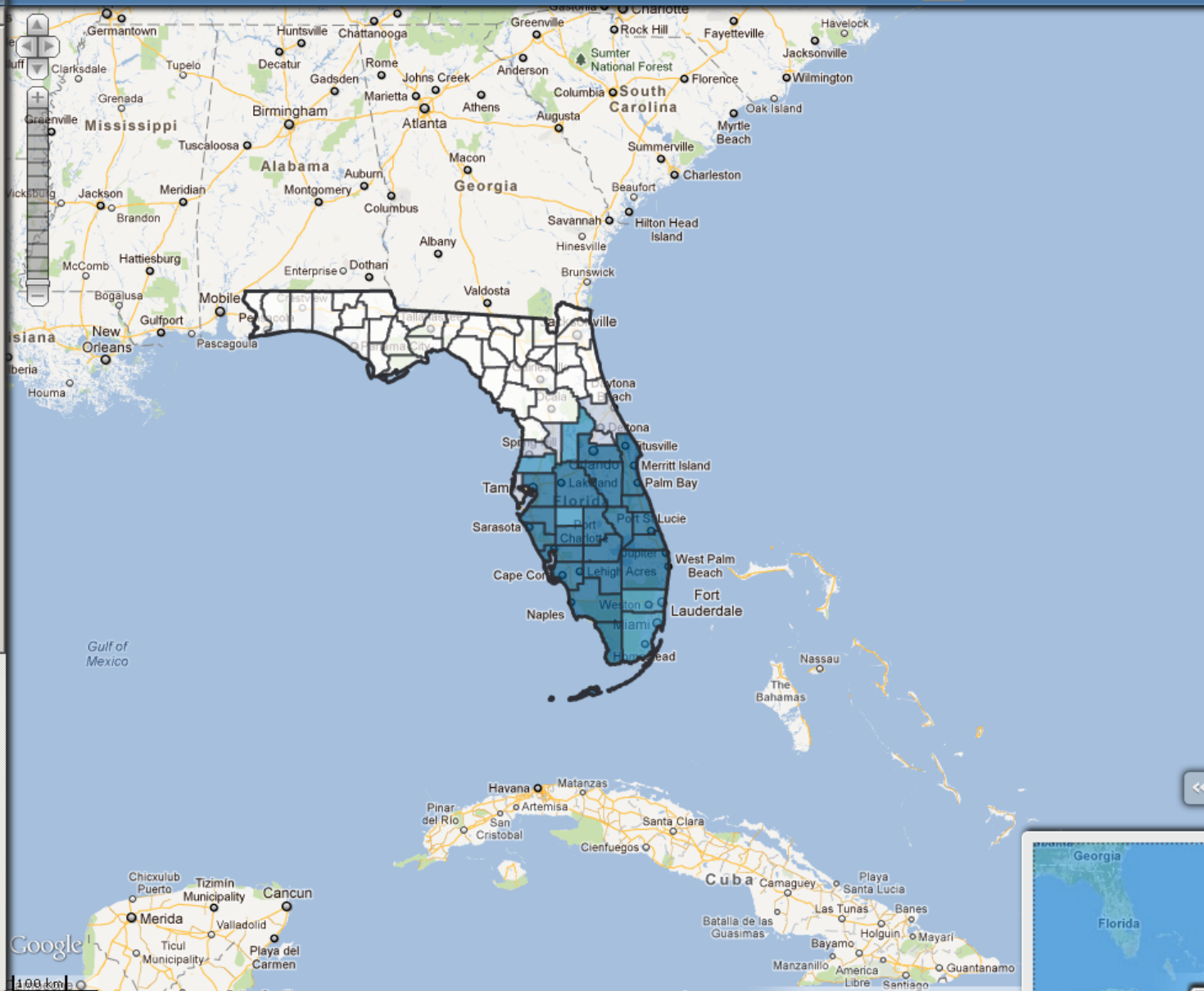
### Base Layers

- Google Streets Layer
- Google Hybrid Layer
- Google Aerials
- Google Terrain Layer
- Empty Base Layer

### Overlays

#### Invasive Species Observations

- Combined
- Partner Data
- Nonindig Aquatis (USGS)
- Confirmed



My iMapInvasives

Resources

Invasives Management

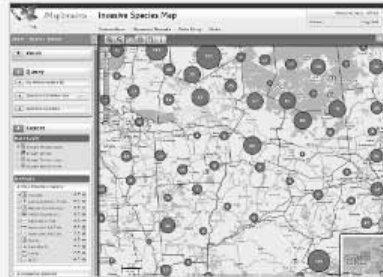
System Management

## Enter Data



- Observation
- Survey
- Treatment

## View the Map



- View the Map

## View Table



- All Observations
- Surveys
- Treatments

## Query Observations



- **Custom Observation Query**
- View Report for All Data

## My Personal Information

### My Profile



- Edit My Profile
- Change my Password

### E-Mail Alerts



- Manage my Alerts

## My iMapInvasives Data

### View My Data in a Table



- 

### Download My Observation Data



- 

### Download Related Data (ESRI gdb)



- Assessment Data
  -
- Treatments

Search by Species or Location

### Zoom

[Zoom To County](#) ?  
Select County

[Zoom To CISMA](#) ?  
Select CISMA

[Zoom To Conservation Land](#) ?  
Select Conservation Land

[Zoom To Coordinate](#) ?  
Latitude  Longitude

### Invasive Species

[Locations](#)

Active Query  
Everything shown

Query Options ?

### Layers

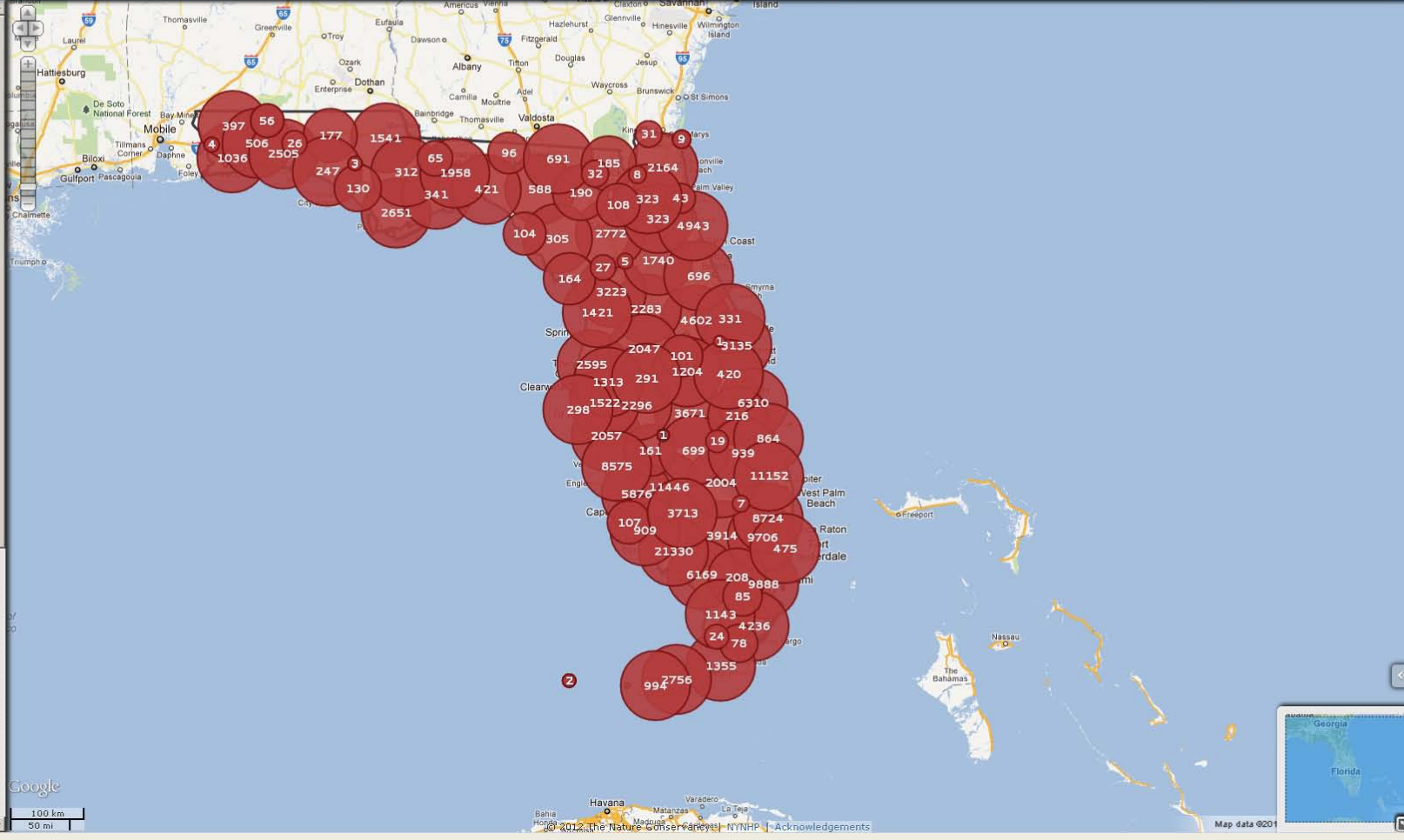
Base Layers

- Google Streets Layer
- Google Hybrid Layer
- Google Aerials
- Google Terrain Layer
- Empty Base Layer

Overlays

[Invasive Species Observations](#)

- Combined
- Partner Data



Search by Species or Location

**Query Options**

**Layers**

**Base Layers**

- Google Streets Layer
- Google Hybrid Layer
- Google Aerials
- Google Terrain Layer
- Empty Base Layer

**Overlays**

**Invasive Species Observations**

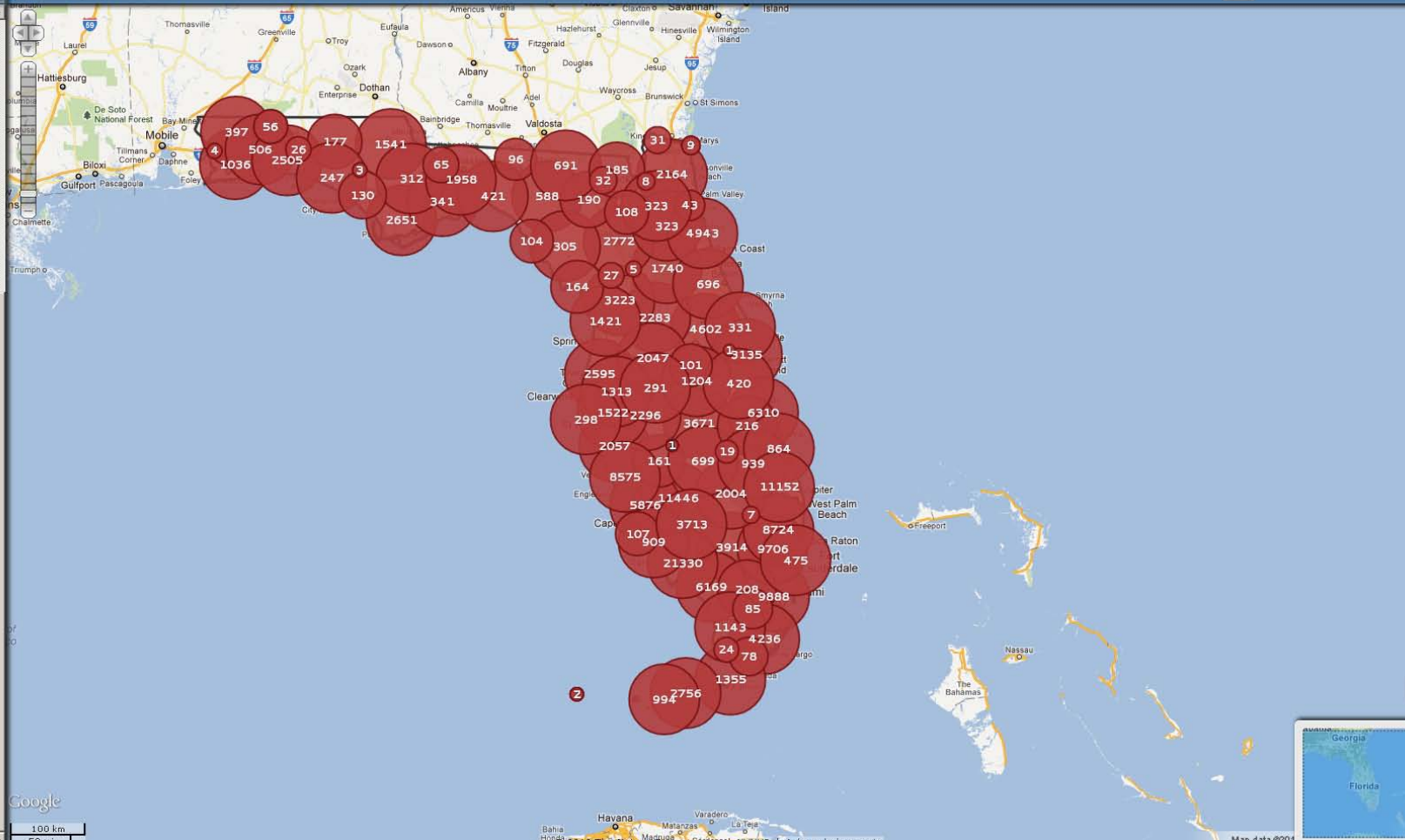
- Combined
- Partner Data
- Nonindig Aquatis (USGS)
- Confirmed
- Unconfirmed
- Problem
- Deleted

**Invasive Species Details**

- Assessments - Animals
- Assessments - Insects
- Assessments - Plants
- Treatments
- Survey

**Map Overlay Layers**

- Counties
- Conservation Lands
- CISM A
- HUC 8



Google  
 100 km  
 50 mi



Search by Species or Location

Go



### Zoom

#### Zoom To County

Select County

#### Zoom To CISMA

Select CISMA

#### Zoom To Conservation Land

Select Conservation Land

#### Zoom To Coordinate

Latitude Longitude

Latitude Longitude

Zoom

### Invasive Species

#### Locations

#### Active Query

Everything shown

#### Query Options

Configure Query

Clear Query

#### Distribution

Legend

#### By ID

### Layers

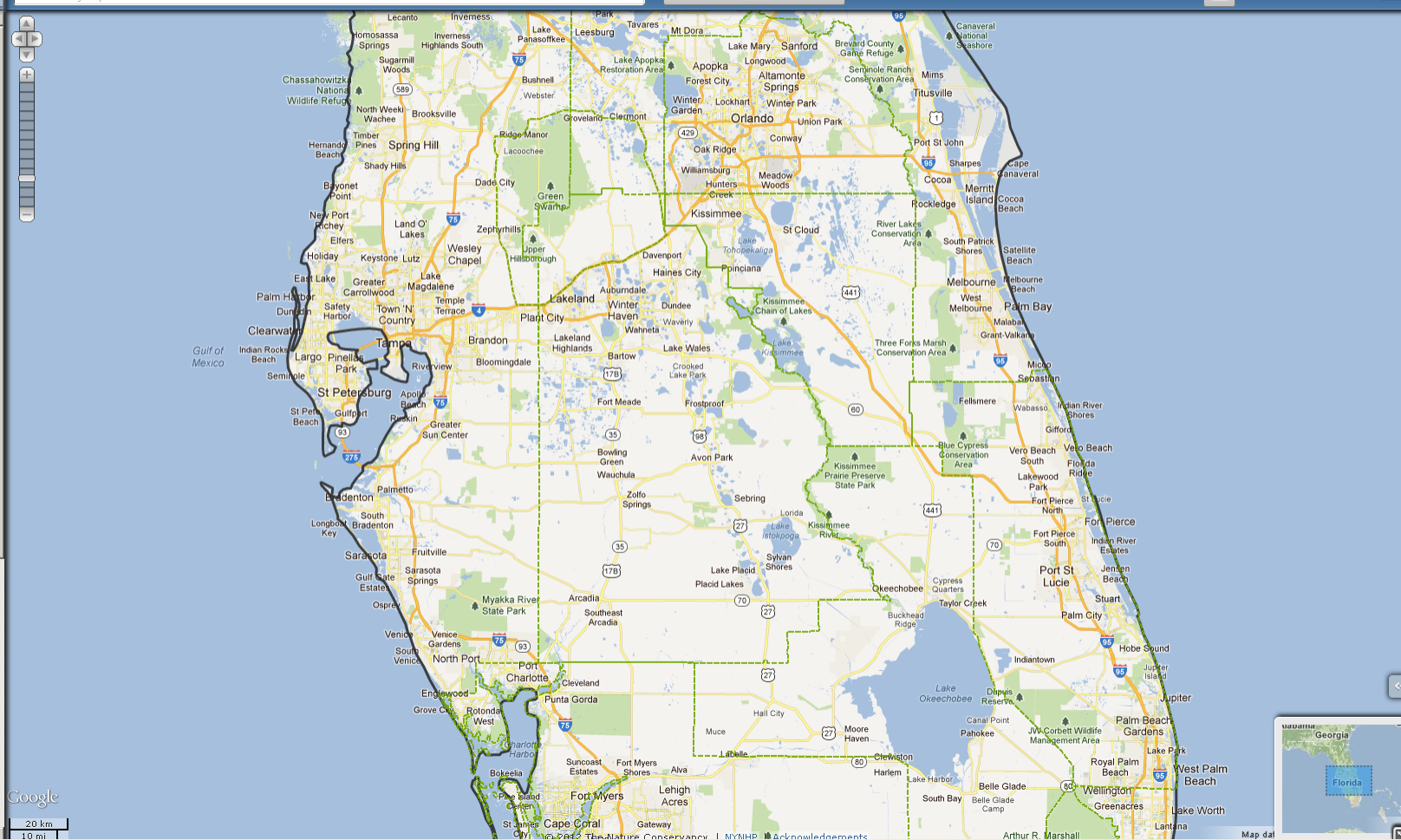
#### Base Layers

- Google Streets Layer
- Google Hybrid Layer
- Google Aerials
- Google Terrain Layer
- Empty Base Layer

#### Overlays

#### Invasive Species Observations

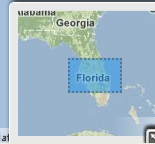
Combined



Google

20 km

10 mi



Query Options

[Configure Query](#) [Clear Query](#)

**Distribution** [Legend](#)

By ID

**Layers**

Base Layers

- Google Streets Layer
- Google Hybrid Layer
- Google Aerials
- Google Terrain Layer
- Empty Base Layer

Overlays

**Invasive Species Observations**

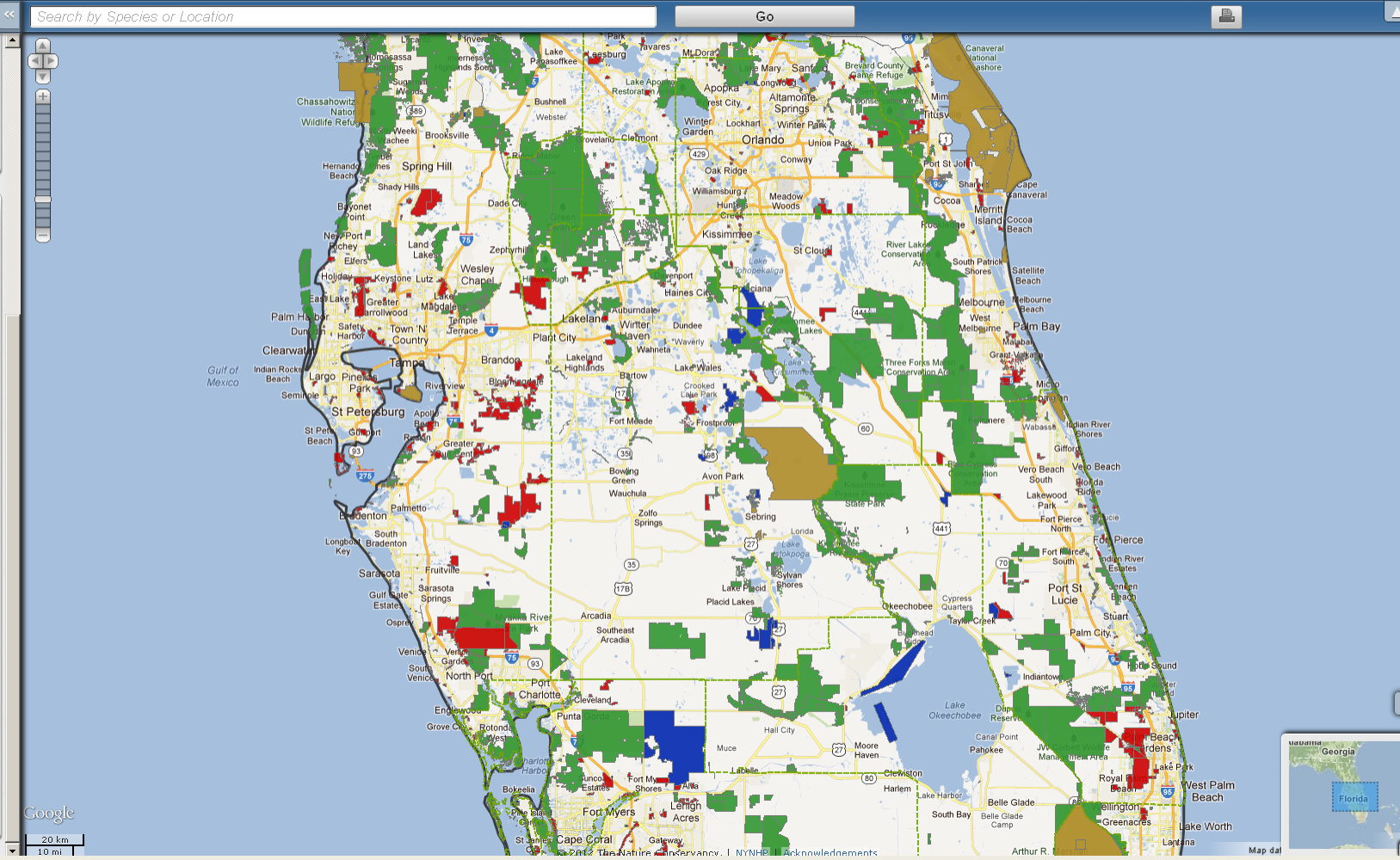
- Combined
- Partner Data
- Nonindig Aquatics (USGS)
- Confirmed
- Unconfirmed
- Problem
- Deleted

**Invasive Species Details**

- Assessments - Animals
- Assessments - Insects
- Assessments - Plants
- Treatments
- Survey

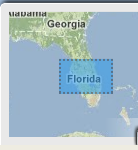
**Map Overlay Layers**

- Counties
- Conservation Lands
- Cisma
- HUC 8



Google

20 km  
10 mi



Search by Species or Location

**Query Options**

**Layers**

**Base Layers**

- Google Streets Layer
- Google Hybrid Layer
- Google Aerials
- Google Terrain Layer
- Empty Base Layer

**Overlays**

**Invasive Species Observations**

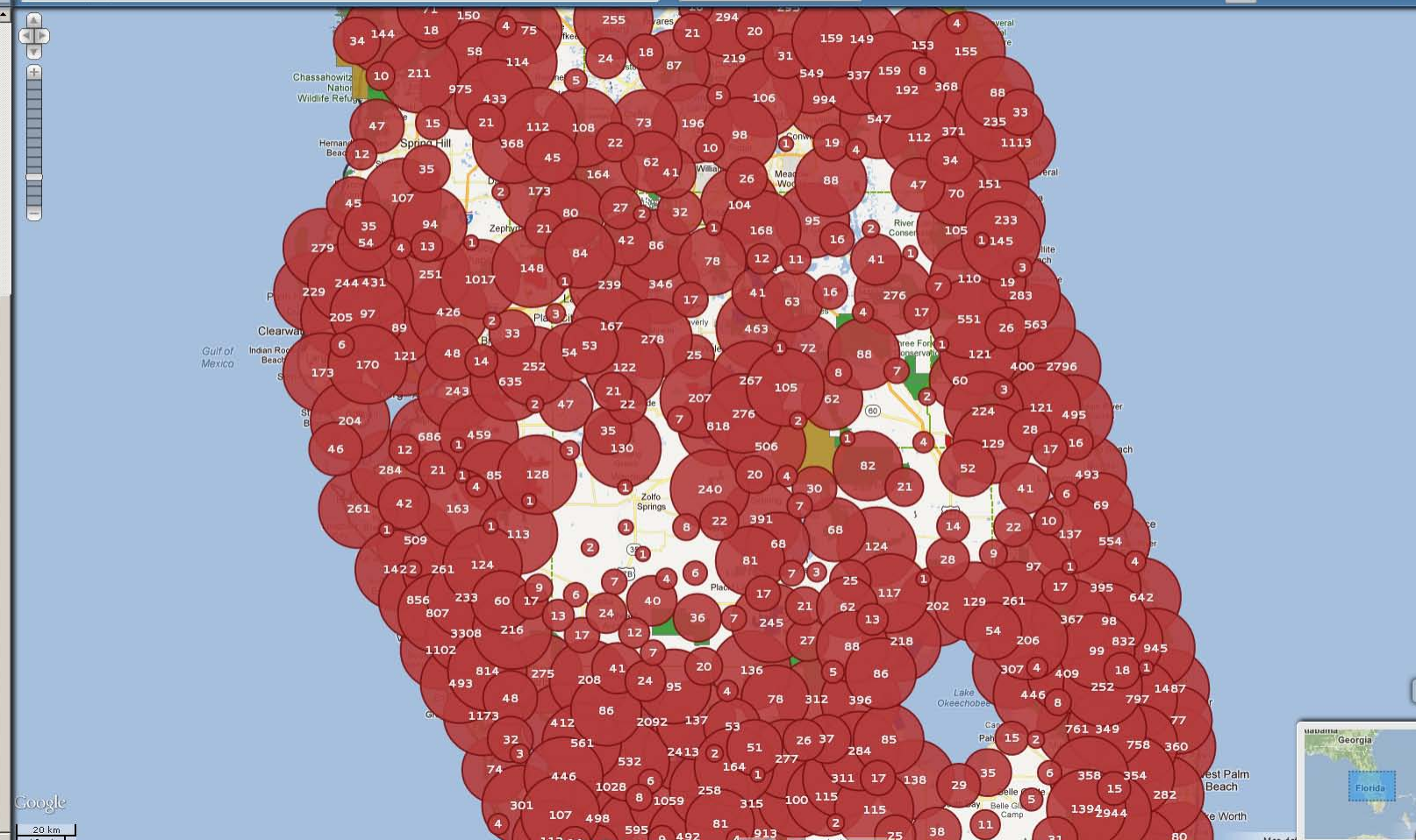
- Combined
- Partner Data
- Nonindig Aquatis (USGS)
- Confirmed
- Unconfirmed
- Problem
- Deleted

**Invasive Species Details**

- Assessments - Animals
- Assessments - Insects
- Assessments - Plants
- Treatments
- Survey

**Map Overlay Layers**

- Counties
- Conservation Lands
- CISMA
- HUC 8



Search by Species or Location

**Zoom**

**Invasive Species**

**Locations**

Active Query  
Everything shown

Query Options

Distribution

By ID

---

**Layers**

**Base Layers**

- Google Streets Layer
- Google Hybrid Layer
- Google Aerials
- Google Terrain Layer
- Empty Base Layer

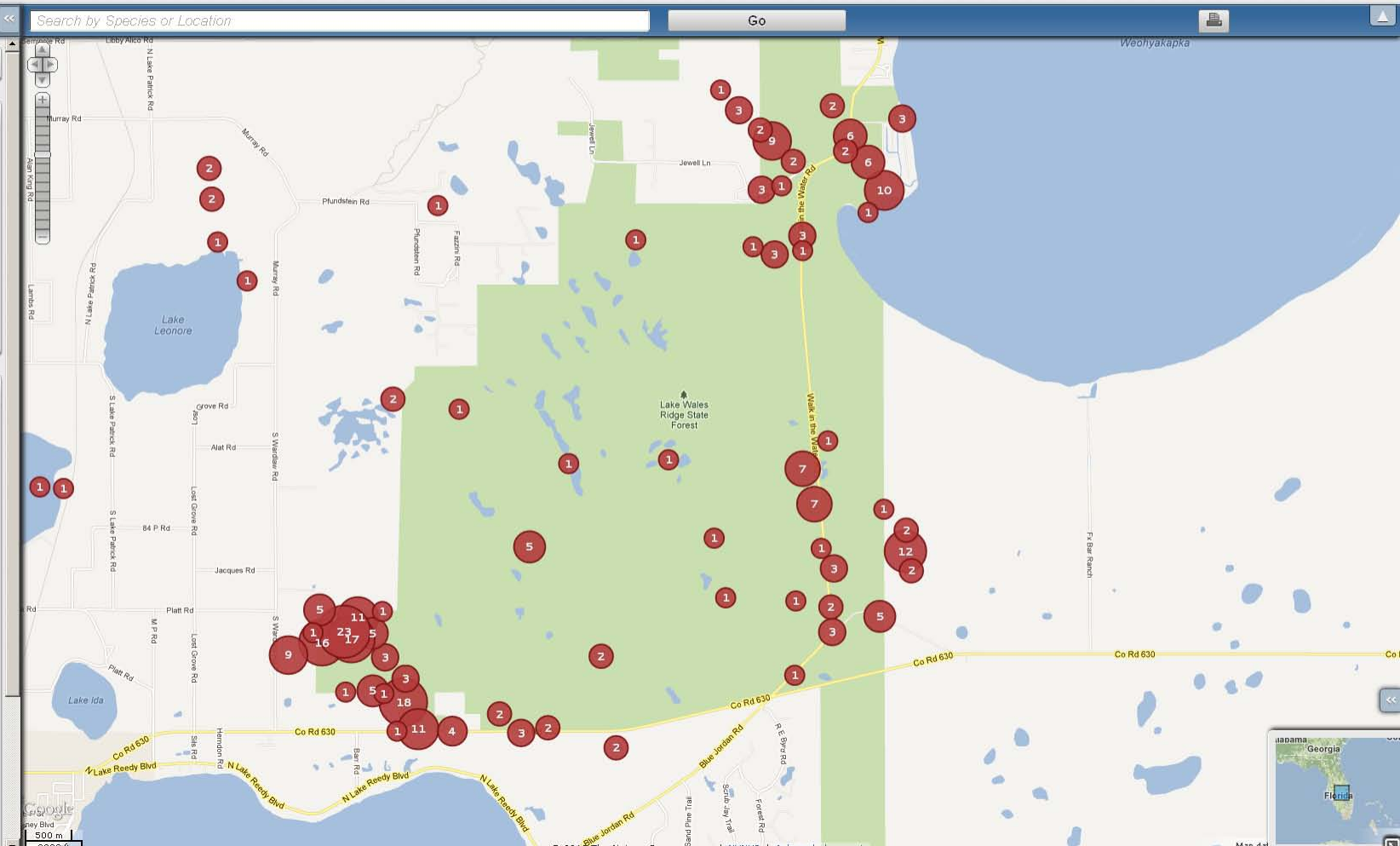
**Overlays**

**Invasive Species Observations**

- Combined
- Partner Data
- Nonindig Aquatis (USGS)
- Confirmed
- Unconfirmed
- Problem
- Deleted

**Invasive Species Details**

- Assessments - Animals
- Assessments - Insects
- Assessments - Plants
- Treatments





Search by Species or Location



**Zoom**

**Invasive Species**

**Locations**

Active Query  
Everything shown

Query Options

**Distribution**

**By ID**

**Layers**

**Base Layers**

- Google Streets Layer
- Google Hybrid Layer
- Google Aerials
- Google Terrain Layer
- Empty Base Layer

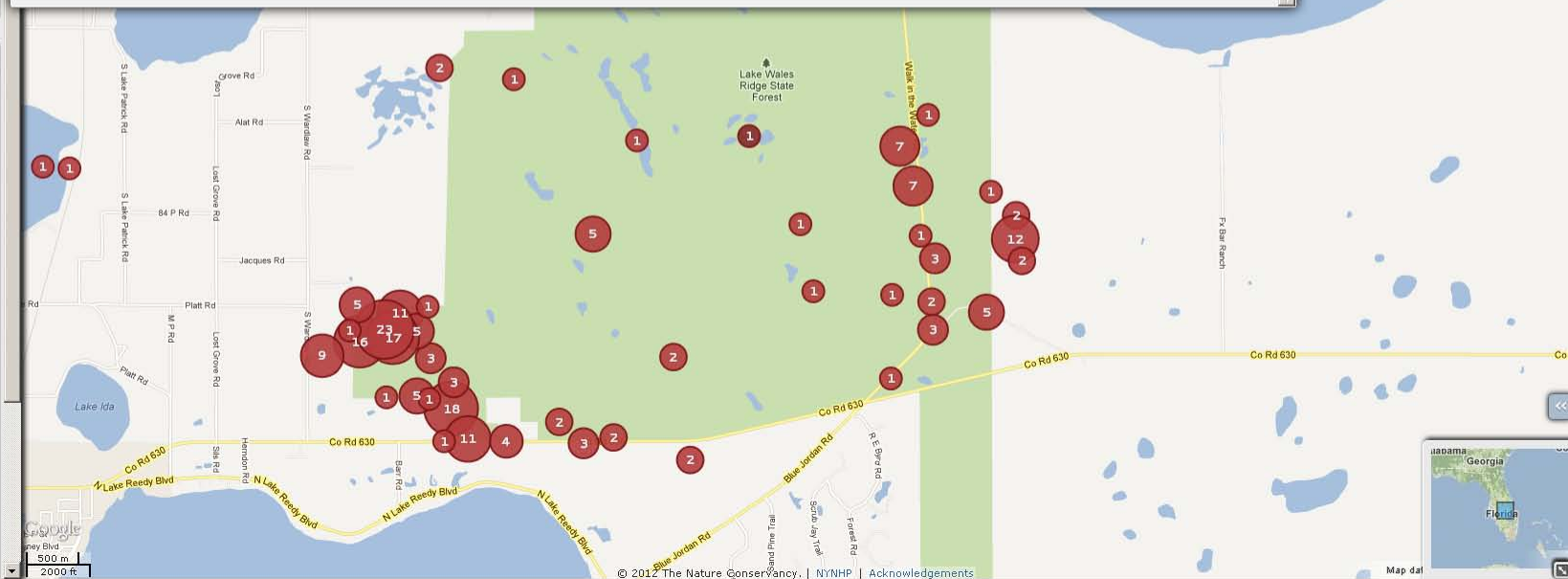
**Overlays**

**Invasive Species Observations**

- Combined
- Partner Data
- Nonindig Aquats (USGS)
- Confirmed
- Unconfirmed
- Problem
- Deleted

**Invasive Species Details**

- Assessments - Animals
- Assessments - Insects
- Assessments - Plants
- Treatments



# Data Entry



**iMapInvasives**  
*geotagging invasive exotic species*

## Florida User Tools

Location: **My iMapInvasives**

Welcome back, **Carolyn**  
(carokindell)  
[Home](#) [Log Out](#)

[My iMapInvasives](#)

[Resources](#)

[Invasives Management](#)

[System Management](#)

### Enter Data



- Observation
- Survey
- Treatment

### View the Map



- View the Map

### View Table

Observation ID	Species Name	Location	Date	Status
1000000001	Agave parviflora	1000000001	10/10/2010	Observed
1000000002	Agave parviflora	1000000002	10/10/2010	Observed
1000000003	Agave parviflora	1000000003	10/10/2010	Observed
1000000004	Agave parviflora	1000000004	10/10/2010	Observed
1000000005	Agave parviflora	1000000005	10/10/2010	Observed
1000000006	Agave parviflora	1000000006	10/10/2010	Observed
1000000007	Agave parviflora	1000000007	10/10/2010	Observed
1000000008	Agave parviflora	1000000008	10/10/2010	Observed
1000000009	Agave parviflora	1000000009	10/10/2010	Observed
1000000010	Agave parviflora	1000000010	10/10/2010	Observed

- All Observations
- Surveys
- Treatments

### Query Observations



- Custom Observation Query
- View Report for All Data

### My Personal Information

#### My Profile



- Edit My Profile
- Change my Password

#### E-Mail Alerts



- Manage my Alerts

### My iMapInvasives Data

#### View My Data in a Table



- 

#### Download My Observation Data



- 

#### Download Related Data (ESRI gdb)



- Assessment Data
  -
- Treatments



# Florida Data Entry

My iMapInvasives :: Data Entry

Welcome back, **Carolyn**  
(carokindell)  
[Home](#) [Log Out](#)



## Step 1 Photos

Normal Photo

No image

Drop New Photo Here

Choose File No file chosen

Remove Photo

Normal Photo Credits

Infestation Photo

No image

Drop New Photo Here

Choose File No file chosen

Remove Photo

Infestation Photo Credits

Closeup Photo

No image

Drop New Photo Here

Choose File No file chosen

Remove Photo

Closeup Photo Credits

Other Photo

No image

Drop New Photo Here



1

2

3

4

5

6

7

## Step 2 Who

Are you entering data you observed?

Yes, I am the observer

No, I am entering data for

No, but the observer is not listed





1

2

3

4

5

6

7

## Step 3 Project

Are you entering data for a project?

No, I am not.

If you would like to add a project, please contact [fprice@fnai.org](mailto:fprice@fnai.org)

Yes, I am entering it for





# Florida Data Entry

My iMapInvasives :: Data Entry

Welcome back, Carolyn (carokindell) Home Log Out

- 1
- 2
- 3
- 4
- 5
- 6
- 7

## Step 4 What (Species)

What Species Was Observed?

Species Type

Animal
  Insect
  Plant

By Common Name

Kudzu

By Scientific Name

Pueraria montana var. lobata



Show Full Image

Image Credit

Jil Swearingen, USDI National Park Service, Bugwood.org

Further Species Information



1

2

3

4

5

6

7

## Step 5 When

When was the species observed? ?

Select a date

2012-03-01

March 2012

Mo	Tu	We	Th	Fr	Sa	Su
27	28	29	1	2	3	4
5	6	7	8	9	10	11
12	13	14	15	16	17	18
19	20	21	22	23	24	25
26	27	28	29	30	31	1
2	3	4	5	6	7	8



# Florida Data Entry

My iMapinvasives :: **Data Entry**

Welcome back, **Carolyn**  
(carokindell)  
[Home](#) [Log Out](#)

1

2

3

4

5

**6**

7

## Step 6 Where

Search by Coordinate

Enter Coordinate

Lat / Lon Decimal

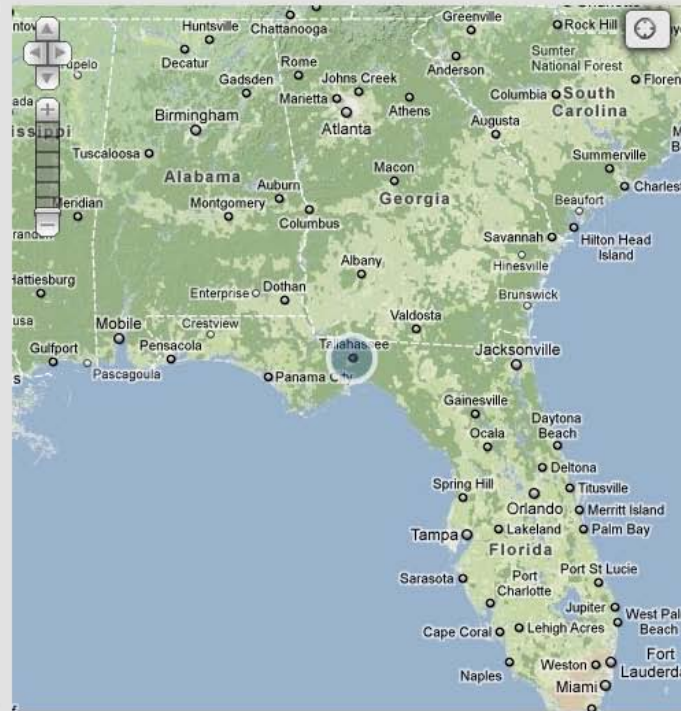
Longitude

Latitude

*Search by Location*

**Go**

Drag Map to Update Location





1 2 3 4 5 6 **7**

## Step 7 Submit Observation

**Submit Observation** To review your record, please use the buttons above

Submit Observation



1

2

3

4

5

6

7

## Step 7 Submit Observation

### Observation Information

*This ID is used to identify your observation. Please record it for your reference.*

**ID:** FL-105533U

[View Observation on Map](#)

[Submit Another Observation](#)

### Next Steps

[Submit Assessment](#)

?

## Plant Assessment

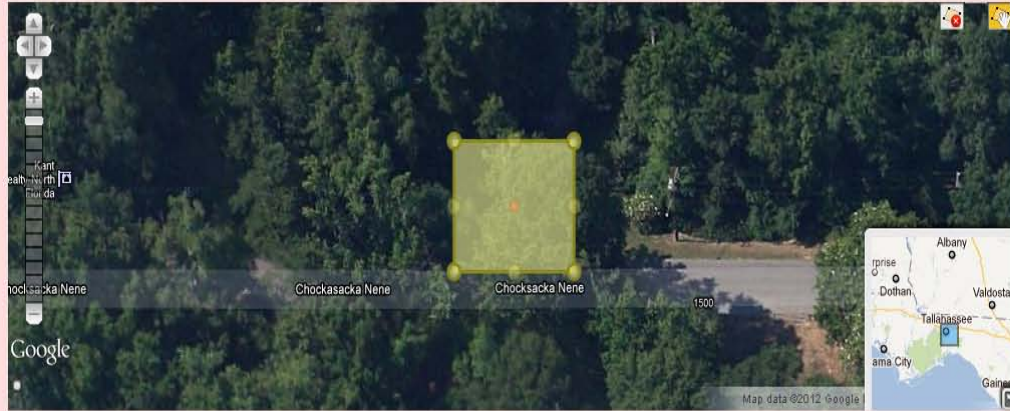
New Record

Search

## \* Assessment Area

Use the buttons on the top right side of the map to add a feature.

- Use the red 'x' button to delete a polygon
- Use the green '+' button to draw a new polygon (Double click to end drawing the assessment polygon.)
- Use the pan button to move the map or edit the polygon



Polygon Area (in square meters)

204.50072602896398

## Photos

Photo 1

No image

Drop New Photo Here

 No file chosen

Photo 1 Credit

Photo 2

No image

Drop New Photo Here

 No file chosen

## Plant Assessment

[New Record](#)

Search

[Go](#)

### \* Assessment Area

Use the buttons on the top right side of the map to add a feature.

- Use the red 'x' button to delete a polygon
- Use the green '+' button to draw a new polygon (Double click to end drawing the assessment polygon.)
- Use the pan button to move the map or edit the polygon



Polygon Area (in square meters)

298.1238084907309

## Photos

Photo 1

No image

Drop New Photo Here

[Choose File](#) | No file chosen

[Remove Photo](#)

Photo 1 Credit

Photo 2

No image

Drop New Photo Here

[Choose File](#) | No file chosen

[Remove Photo](#)

## Assessment Information

Plant Type

Plant Terrestrial



\* Observation ID

FL-105533U



Evaluation Type



Evaluation Type Comments



Site Disturbance Type



Site Disturbance Severity



Follow Up



Assessment Comments



## Affected Area Information

Disturbance Comments



Infested Area



Unit of Measure



Percent Cover



Cover Class



Gross Area (square meters)

298



Site Disturbance Severity

d) Heavy

?

Follow Up

.....

?

Assessment Comments

?

### Affected Area Information

Disturbance Comments

?

Infested Area

?

Unit of Measure

a) Acres

?

Percent Cover

5

?

Cover Class

a) less than 5%

?

Gross Area (square meters)

298

?

Area of land/water containing the organism of interest, including areas not infested. The gross area is defined by drawing a line around the general outer perimeter of the area occupied by the population.

Landscape Type

.....

?

Landscape and Location Comments

?

Native Vegetation Distribution

.....

?

### Plant Information

Plant Distribution

.....

?

Plant Distribution (if other)

?



**iMapInvasives**  
*geotracking invasive exotic species*

### Login

**Username**

**Password** ( [Forgot Password?](#) )

**Login**

[Request a Login](#)



## New York Administrator Tools

Location: My iMapInvasives

My iMapInvasives


Resources

### Enter Data



- Observation
- SmartphoneTips
- Survey
- Treatment



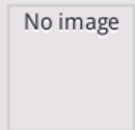
imapinvasives.org wants your location. 

**Normal Photo**



Credits |

**Closeup Photo**

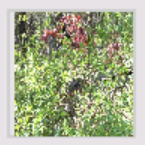


Credits |

# Step 1 Photos

## Normal Photo

/data/data/org.mozilla.firefox Browse...



Upload Complete



Credits

## Closeup Photo

Browse...



Credits

## Step 2 Who

Are you entering data you observed?

- Yes, I am the observer
- No, I am entering data for

No, but the observer is not listed



## Step 3 Project

Are you entering data for a project?

No, I am not.

If you would like to add a project, please contact [imapinvasives@nynhp.org](mailto:imapinvasives@nynhp.org)

Yes, I am entering it for



# Step 4 What

Species Type

- Animal
- Insect
- Plant

By Common Name

Select A Species

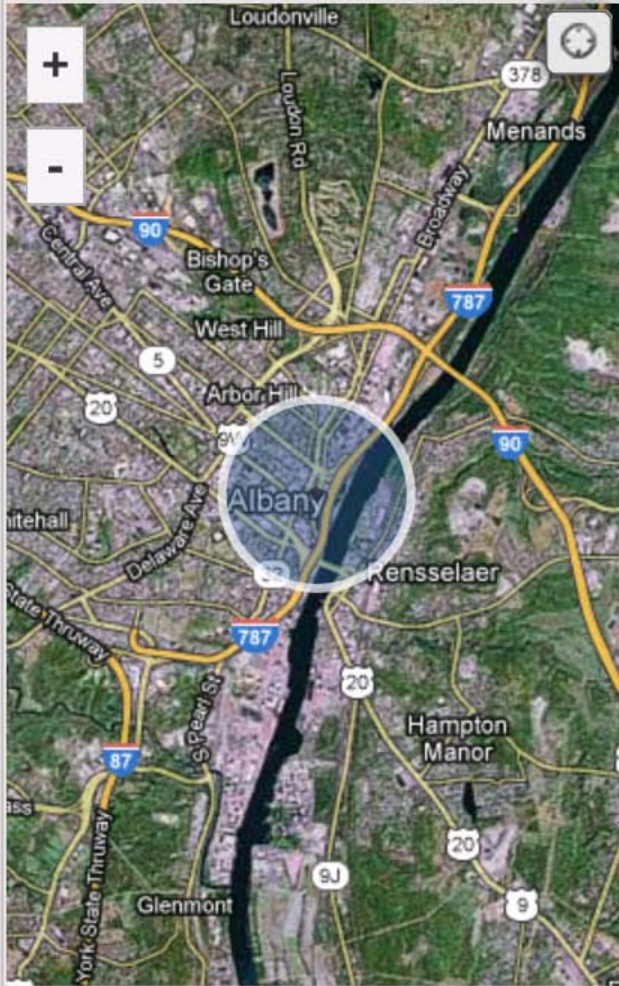
By Scientific Name

Select A Species



# Step 6 Where

Drag Map to Update Location



# Step 6 Where

Drag Map to Update Location






# Florida User Tools

Location: **My iMapInvasives**

Welcome back, **Carolyn**  
(carokindell)  
[Home](#) [Log Out](#)

[My iMapInvasives](#) [Resources](#) [Invasives Management](#) [System Management](#)

### Enter Data



- Observation
- Survey
- Treatment

### View the Map




- View the Map

### View Table



- All Observations
- Surveys
- Treatments

### Query Observations



- Custom Observation Query
- View Report for All Data

### My Personal Information

**My Profile**


- Edit My Profile
- Change my Password

**E-Mail Alerts**


- Manage my Alerts

### My iMapInvasives Data

**View My Data in a Table**

 •

**Download My Observation Data**

 •

**Download Related Data (ESRI gdb)**

- Assessment Data
  -
- Treatments



## Survey Information New Record

### Search

#### \* Survey Area

Use the buttons on the top right side of the map to add a feature.

- Use the red 'x' button to delete a polygon
- Use the green '+' button to draw a new polygon (Double click to end drawing the survey polygon.)
- Use the pan button to move the map or edit the polygon



Polygon Area (in square meters) 53958.52443903871

## Basic Survey Fields

\* Survey Goal  ?

\* Lead Contact  ?

\* Targeted Species  ?

Targeted Species Detected  ?

\* Survey Start Date  ?

\* Survey End Date  ?





## Treatment Information New Record

Search

**\* Treatment Area**

Use the buttons on the top right side of the map to add a feature.

- Use the red 'x' button to delete a polygon
- Use the green '+' button to draw a new polygon (Double click to end drawing the treatment polygon.)
- Use the pan button to move the map or edit the polygon



Polygon Area (in square meters) ?

## Required Fields

* Treatment Goals	<input type="text" value="....."/>	<span style="float: right;">?</span>
* Lead Contact	<input type="text" value="....."/>	<span style="float: right;">?</span>
* Targeted Species	<input type="text" value="Select Some Options"/>	<span style="float: right;">?</span>
* Treatment Start Date	<input type="text"/>	<span style="float: right;">?</span>
* Treatment End Date	<input type="text"/>	<span style="float: right;">?</span>
* Permit needed?	<input type="text" value="....."/>	<span style="float: right;">?</span>



# Florida User Tools

Location: **My iMapInvasives**

Welcome back, **Carolyn**  
(carokindell)  
[Home](#) [Log Out](#)

- My iMapInvasives**
- Resources
- Invasives Management
- System Management

### Enter Data



- Observation
- Survey
- Treatment

### View the Map



- View the Map

### View Table



- All Observations
- Surveys
- Treatments

### Query Observations



- **Custom Observation Query**
- View Report for All Data

### My Personal Information

**My Profile**

- Edit My Profile
- Change my Password

**E-Mail Alerts**

- Manage my Alerts

### My iMapInvasives Data

**View My Data in a Table**

- Select Data to View

**Download My Observation Data**

- Select Data to Download

**Download Related Data (ESRI gdb)**

- Assessment Data
  - Select Assessment Data to Download
- Treatments



# Florida User Tools

My iMapInvasives :: Custom Query :: Observations Table

Welcome back, **Carolyn**  
(carokindell)  
[Home](#) [Log Out](#)

## Observations Table

Custom Data Query

Active Custom Query

User\_type = all\_data [Clear Query](#)

[Search](#)

0 - 25 of 184,859 results

ID	Status	Scientific Name	Common Name	Observer	Entry User	County	Entry Date ▼	Photo
FL-145109	Partner Data	Lygodium microphyllum	old world climbing fern	unknown		Palm Beach		0
FL-21902	Partner Data	Urochloa mutica	para grass	gweniacona		St. Lucie		0
FL-48840	Partner Data	Abrus precatorius	rosary pea	annecox		Martin		0
FL-87272	Partner Data	Schinus terebinthifolius	Brazilian pepper	unknown		Miami-Dade		0
FL-106586	Partner Data	Imperata cylindrica	cogon grass	unknown		Polk		0
FL-125853	Partner Data	Casuarina equisetifolia	Australian pine	unknown		Lee		0
FL-145110	Partner Data	Lygodium microphyllum	old world climbing fern	unknown		Palm Beach		0
FL-21903	Partner Data	Abrus precatorius	rosary pea	gweniacona		St. Lucie		0
FL-48841	Partner Data	Schinus terebinthifolius	Brazilian pepper	annecox		Martin		0
FL-68041	Partner Data	Schinus terebinthifolius	Brazilian pepper	unknown		Lee		0
FL-87273	Partner Data	Dioscorea bulbifera	air-potato	stevgreen		Miami-Dade		0
FL-106587	Partner Data	Urena lobata	Caesar's weed	rodegrills		Orange		0
FL-125854	Partner Data	Ricinus communis	castor bean	unknown		Lee		0
FL-145111	Partner Data	Schinus terebinthifolius	Brazilian pepper	unknown		Collier		0
FL-21904	Partner Data	Schinus terebinthifolius	Brazilian pepper	gweniacona		St. Lucie		0

0 - 25 of 184,859 results

< >

[My iMapInvasives](#) [Resources](#) [Invasives Management](#) [System Management](#)

### Enter Data



- Observation
- Survey
- Treatment

### View the Map



- View the Map

### View Table



- All Observations
- Surveys
- Treatments

### Query Observations



- **Custom Observation Query**
- View Report for All Data

### My Personal Information

**My Profile**

- Edit My Profile
- Change my Password

**E-Mail Alerts**

- Manage my Alerts

### My iMapInvasives Data

**View My Data in a Table**

- Select Data to View

**Download My Observation Data**

- Select Data to Download

**Download Related Data (ESRI gdb)**

- Assessment Data
  - Select Assessment Data to Download
- Treatments



## 1 Type

Full Data Query

Common Invasive Species

Early Detection

Approaching Region

## 2 Criteria

### Species type

Species Type

All

### Date Observed Range

Select Date

Note: Date ranges will not affect data on map

Start:

End:

### Organization

Organization

- Florida Natural Areas Inventory
- Franklin County
- Florida Atlantic University
- Florida Department of Agriculture and Consumer Services
- Florida Department of Agriculture and Consumer Services, Division of Forestry
- Florida Department of Community Affairs
- Florida Department of Environmental Protection
- Florida Department of Environmental Protection, Bureau of Mine Reclamation
- Florida Department of Environmental Protection, Division of Rec. and Parks
- Florida Department of Environmental Protection, Florida Geological Survey
- Florida Department of Environmental Protection, Office of Coastal and Aquatic Managed Areas
- Florida Department of Environmental Protection, Office of Greenways and Trails
- Florida Department of Military Affairs
- Florida Department of Transportation
- Florida Environmental and Land Services, Inc.
- Florida Exotic Pest Plant Council
- Florida Fish and Wildlife Conservation Commission
- Florida Fish and Wildlife Conservation Commission, Invasive Plant Management Section
- Florida Natural Areas Inventory
- Florida State College at Jacksonville
- Franklin County
- Friends of the Seminole County Environmental Studies Center

### Project

Project

### Data Status

Data Status

### Suspicious Distance

Suspicious Distance Flag

## 3 Results

View Table

View Report

View On Map

Download Data

# Generated Report



Report for Data Entry Submitter: Gwenuiacona , Observer: Gwenuiacona

**8887** Total Observations Found

Date Generated: March 01, 2012

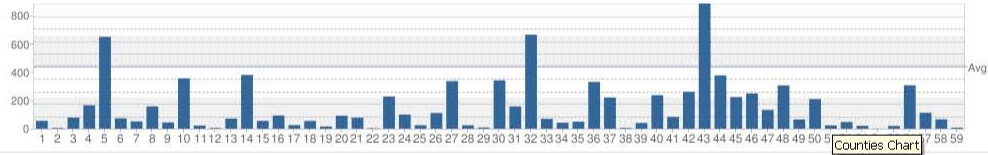
[View Quick Summary Report](#)

Counties: 59  
Species: 106  
Users: 1  
Organizations: 5

## List of Observations

## County Report - 59 Counties

### Summary



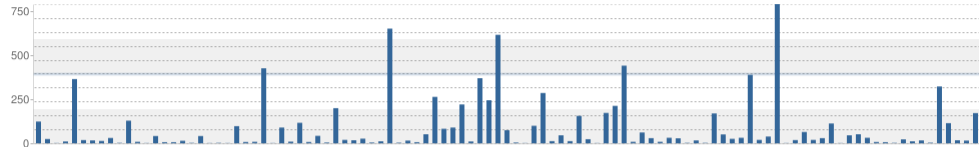
Total Counties: 59  
Average Number of Observations: 150

### Counties Found

1 Alachua: 55	11 Dixie: 71	21 Holmes: 24	37 Miami-dade: 220	49 St. Johns: 65
2 Baker: 5	12 Escambia: 379	22 Indian river: 110	38 Nassau: 5	50 St. Lucie: 209
3 Bay: 78	13 Flagler: 55	23 Jackson: 336	39 Okaloosa: 40	51 Sumter: 23
4 Bradford: 165	14 Franklin: 93	24 Jefferson: 24	40 Orange: 236	52 Suwannee: 47
5 Brevard: 648	15 Gadsden: 25	25 Lafayette: 8	41 Osceola: 83	53 Taylor: 20
6 Broward: 73	16 Gilchrist: 54	26 Lake: 341	42 Pasco: 260	54 Undefined County: 1
7 Charlotte: 51	17 Glades: 15	27 Lee: 157	43 Pinellas: 883	55 Union: 19
8 Citrus: 157	18 Gulf: 91	28 Leon: 663	44 Polk: 376	56 Volusia: 306
9 Clay: 44	19 Hamilton: 77	29 Levy: 69	45 Putnam: 223	57 Wakulla: 112
10 Collier: 355	20 Hardee: 3	30 Liberty: 42	46 Santa rosa: 249	58 Walton: 66
11 Columbia: 22	21 Hernando: 227	31 Madison: 49	47 Sarasota: 132	59 Washington: 7
12 Desoto: 5	22 Hillsborough: 99	32 Manatee: 330	48 Seminole: 305	

## Species Report - 106 Species

### Summary



Total Species: 106  
Average Number of Observations: 83

### Species Found

<p><b>Abrus precatorius</b>   <i>Rosary Pea</i> 123 observations (ID: 2-156893 )</p> <p>Common Invasive Species</p>	1	<p><b>Manilkara zapota</b>   <i>Sapodilla</i> 1 observations (ID: 2-156165 )</p> <p>Common Invasive Species</p>	55
<p><b>Acacia auriculiformis</b>   <i>Earleaf Acacia</i> 24 observations (ID: 2-146783 )</p> <p>Common Invasive Species</p>	2	<p><b>Melaleuca quinquenervia</b>   <i>Melaleuca</i> 99 observations (ID: 2-132725 )</p> <p>Common Invasive Species Featured Species</p>	56
<p><b>Adenanthera pavonina</b>   <i>Red Sandalwood</i> 1 observations (ID: 2-144010 )</p> <p>Common Invasive Species</p>	3	<p><b>Melia azedarach</b>   <i>Chinaberry</i> 285 observations (ID: 2-152741 )</p> <p>Common Invasive Species</p>	57
<p><b>Agave sisalana</b>   <i>Sisal Hemp</i> 10 observations (ID: 2-142908 )</p> <p>Common Invasive Species</p>	4	<p><b>Mimosa pigra</b>   <i>Catclaw Mimosa</i> 12 observations (ID: 2-149309 )</p> <p>Common Invasive Species</p>	58
<p><b>Albizia julibrissin</b>   <i>Mimosa</i> 364 observations (ID: 2-155382 )</p> <p>Common Invasive Species</p>	5	<p><b>Nandina domestica</b>   <i>Heavenly Bamboo</i> 45 observations (ID: 2-155397 )</p> <p>Common Invasive Species</p>	59
<p><b>Albizia lebbek</b>   <i>Woman's-tongue Tree</i> 18 observations (ID: 2-131494 )</p> <p>Common Invasive Species</p>	6	<p><b>Nephrolepis brownii</b>   <i>Asian Sword Fern</i> 12 observations (ID: 2-132729 )</p> <p>Common Invasive Species</p>	60
<p><b>Aleurites fordii</b>   <i>Tung oil Tree</i> 16 observations (ID: 2-149724 )</p>	7	<p><b>Nephrolepis cordifolia</b>   <i>Sword Fern</i> 155 observations (ID: 2-153758 )</p>	61



## 1 Type

## 2 Criteria

### Data Set

Data Set:  ?

### Users

Observer Name:  ?

Observer Name From Database:  ?

### Geography

Geography Type:  ?

Geography Value:  ?

### Species

Species Type:  Animal  Insect  Plant

Genus Name:

## 3 Results



# Generated Report

Print

Report for Conservation Lands; Lake Wales Ridge State Forest

**1519** Total Observations Found

Date Generated: March 01, 2012

[View Quick Summary Report](#)

Counties: 1  
Species: 27  
Users: 5  
Organizations: 4

## ▼ List of Observations

## ▲ County Report - 1 Counties

### Counties Found

Polk: 1519

## ▲ Species Report - 27 Species

### Summary



Total Species: 27  
Average Number of Observations: 56

### Species Found

**Abrus precatorius** | *Rosary Pea*  
26 observations (ID: 2-156893 )

Common Invasive Species

1

**Melia azedarach** | *Chinaberry*  
1 observations (ID: 2-152741 )

Common Invasive Species

15

Total Species: 27  
 Average Number of Observations: 56

Species Found

<p><b>Abrus precatorius</b>   <i>Rosary Pea</i>                      26 observations (ID: <a href="#">2-156893</a> )                      Common Invasive Species</p>	1	<p><b>Melia azedarach</b>   <i>Chinaberry</i>                      1 observations (ID: <a href="#">2-152741</a> )                      Common Invasive Species</p>	15
<p><b>Albizia julibrissin</b>   <i>Mimosa</i>                      3 observations (ID: <a href="#">2-155382</a> )                      Common Invasive Species</p>	2	<p><b>Panicum repens</b>   <i>Torpedo Grass</i>                      2 observations (ID: <a href="#">2-131742</a> )                      Common Invasive Species Featured Species</p>	16
<p><b>Cinnamomum camphora</b>   <i>Camphor Tree</i>                      10 observations (ID: <a href="#">2-132610</a> )                      Common Invasive Species</p>	3	<p><b>Psidium cattleianum</b>   <i>Strawberry Guava</i>                      1 observations (ID: <a href="#">2-131341</a> )                      Common Invasive Species</p>	17
<p><b>Dactyloctenium aegyptium</b>   <i>Durban Crow-foot Grass</i>                      1 observations (ID: <a href="#">2-151603</a> )                      Common Invasive Species</p>	4	<p><b>Psidium guajava</b>   <i>Guava</i>                      2 observations (ID: <a href="#">2-135070</a> )                      Common Invasive Species</p>	18
<p><b>Dalbergia sissoo</b>   <i>Indian Rosewood</i>                      1 observations (ID: <a href="#">2-130140</a> )                      Common Invasive Species</p>	5	<p><b>Rhynchelytrum repens</b>   <i>Natal Grass</i>                      29 observations (ID: <a href="#">2-151602</a> )                      Common Invasive Species</p>	19
<p><b>Dioscorea bulbifera</b>   <i>Air-Potato</i>                      6 observations (ID: <a href="#">2-153194</a> )                      Common Invasive Species</p>	6	<p><b>Sapium sebiferum</b>   <i>Chinese Tallow</i>                      2 observations (ID: <a href="#">2-147870</a> )                      Common Invasive Species</p>	20
<p><b>Eichhornia crassipes</b>   <i>Water Hyacinth</i>                      1 observations (ID: <a href="#">2-133608</a> )                      Common Invasive Species</p>	7	<p><b>Schinus terebinthifolius</b>   <i>Brazilian Pepper</i>                      34 observations (ID: <a href="#">2-147002</a> )                      Common Invasive Species Featured Species</p>	21
<p><b>Eugenia uniflora</b>   <i>Surinam Cherry</i>                      1 observations (ID: <a href="#">2-159032</a> )                      Common Invasive Species</p>	8	<p><b>Solanum viarum</b>   <i>Tropical Soda Apple</i>                      113 observations (ID: <a href="#">2-150308</a> )                      Common Invasive Species Featured Species</p>	22
<p><b>Imperata cylindrica</b>   <i>Cogon Grass</i>                      671 observations (ID: <a href="#">2-133529</a> )                      Common Invasive Species Featured Species</p>	9	<p><b>Sphagneticola trilobata</b>   <i>Wedelia</i>                      5 observations (ID: <a href="#">2-130260</a> )                      Common Invasive Species</p>	23
<p><b>Lantana camara</b>   <i>Lantana</i></p>	10	<p><b>Syagrus romanzoffiana</b>   <i>Queen palm</i></p>	24



## 1 Type

Full Data Query

Common Invasive Species

**Early Detection**

Approaching Region

## 2 Criteria

An Early Detection report shows species with 3 or fewer reported observations.

### Data Set

Data Set

All iMap Data



### Users

Observer Name

All Available



Observer Name From Database

All Available



### Geography

Geography Type

Conservation Lands



Geography Value

Lake Wales Ridge State Forest



### Buffer Distance

Buffer Distance (in meters)



### Species

Species Type

Animal  Insect  Plant

By Common Name

Select A Species

By Scientific Name

Select A Species

## 3 Results

View Table

View Report

View On Map

Download Data

## 1 Type

Full Data Query

Common Invasive Species

Early Detection

**Approaching Region**

## 2 Criteria

### Data Set

Data Set

All iMap Data



### Users

Observer Name

All Available



Observer Name From Database

All Available



### Geography

Geography Type

Conservation Lands



Geography Value

Lake Wales Ridge State Forest



### Buffer Distance

Buffer Distance (in meters)



### Species

Species Type

Animal  Insect  Plant

By Common Name

Select A Species

By Scientific Name

Select A Species

An Approaching Region report shows where there are no reported observations of a species in a geographic region but there are reported observations for the species in adjacent regions.

## 3 Results

View Table

View Report

View On Map

Download Data



# Florida User Tools

Location: **My iMapInvasives**

Welcome back, **Carolyn**  
(carokindell)  
[Home](#) [Log Out](#)

- My iMapInvasives
- Resources**
- Invasives Management
- System Management

### Enter Data

- Observation
- Survey
- Treatment

### View the Map

- View the Map

### View Table

- All Observations
- Surveys
- Treatments

### Query Observations

- **Custom Observation Query**
- View Report for All Data

### My Personal Information

**My Profile**

- Edit My Profile
- Change my Password

**E-Mail Alerts**

- Manage my Alerts

### My iMapInvasives Data

**View My Data in a Table**

- Select Data to View

**Download My Observation Data**

- Select Data to Download

**Download Related Data (ESRI gdb)**

- Assessment Data
  - Select Assessment Data to Download
- Treatments

## Training Reviews

### View Training Review for



- **YouTube Channel**
- **Observations**
  - Training Outline
- **How-To: Data Entry**
  - Observation
  - Assessment Step by Step
  - Assessment (Text version)
  - Survey
  - Treatment Step by Step
  - Treatment (Text version)
- Train the Trainer

## Resources

### /MapInvasives Resources

- **Facebook Page**
- /Map Frequently Asked Questions (FAQ)
- /MapInvasives Terminology
- Survey Types Descriptions

### General Resources

- Invasive Plant Management Decision Analysis Tool - Narrative
- Invasive Plant Management Decision Analysis Tool - Form
- **External Links**
  - Various Site Links

## Administrator Tools

### Tools for Admins



- Geodatabase Template
- Redmine Ticket System
- ArcGIS 9.3 Bulk Data Checking Tool
- Bulk Upload Notes (DRAFT)

## Forms and Documents

### Reference - /MapInvasives Project



- Sharing Principles
- Data Sharing Agreement
- Trouble Shooting Tips
- /MapInvasives Terminology
- /MapInvasives Version History
- Why Firefox?
- /MapInvasives Projects Guide

### Reference - Settings



- Steps to Go Live
- Functions run nightly
- Functionality by User Level
- Overview of Functionality by User Level
- State Specific Programming PDF

### Observation Field Forms



- Observation
- Observation GPS Field Form
- Supplemental Waypoint Field Form

### Assessment Field Forms



- Assessment - Aquatic Animal
- Assessment - Aquatic Plant (with observation)
- Assessment - Terrestrial Animal
- Assessment - Terrestrial Plant (with observation)
- Assessment - Insect

### Survey Field Forms



- Survey - Aquatic Simple (Lacustrine)
- Survey - Aquatic Systematic
- Survey - Cerceris Wasp
- Survey - Host Tree
- Survey - Lake

### Treatment Field Forms



- Treatment - Barrier
- Treatment - Bioagent
- Treatment - Chemical
- Treatment - Fire
- Treatment - Flame Weeding
- Treatment - Grazing
- Treatment - Mechanical / Manual
- Treatment - Shooting
- Treatment - Trapping

# Advantages of *iMapInvasives*

- GIS foundation allows complex spatial analysis
- Many helpful on-demand reports already developed
- Easy to learn and use
- Ability to manage survey and treatment data
- No cost to partners
- Support provided by FNAI
- Tools are being continually improved based on user feedback

# Prioritizing Invasive Exotic Plant Treatments





# Invasive Plant Threats to Rare Plants in the First Coast CISMA

Total Rare Plant Occurrences	260
Total Invasive Occurrences	7,776
Rare Plant Occurrences (with 200m buffer) intersecting Invasive Occurrences	35
Invasive Occurrences intersecting Rare Plant Occurrences (with 200m buffer)	180
Total Intersections Rare Plant Occurrences (with 200m buffer) and Invasive Occurrences	262

# Top Ten Rare Plants Threatened by Proximity (200 m) to Invasive Plants\*

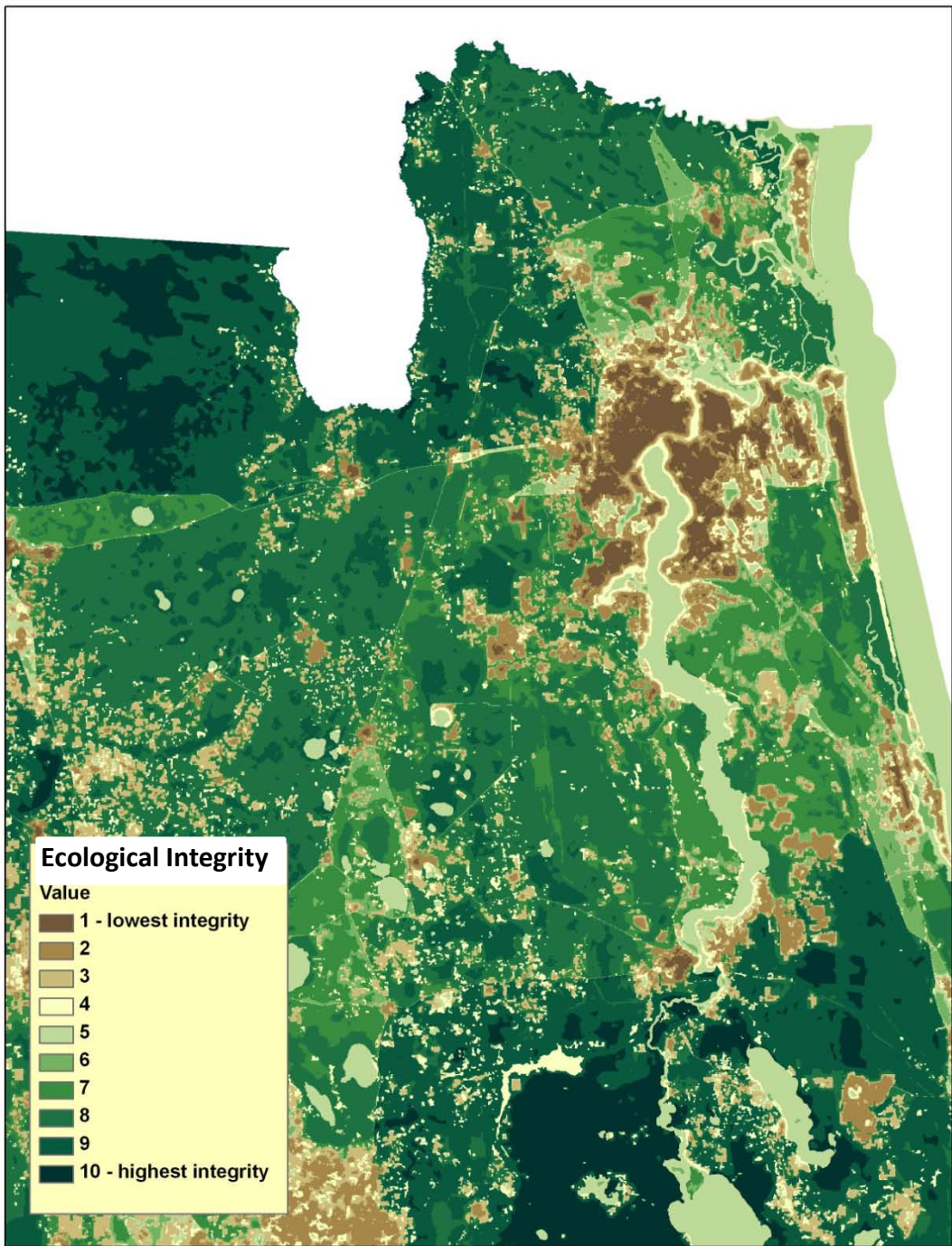
Rare Plant Scientific Name	Rare Plant Common Name	No. Occurrences Intersected
<i>Hartwrightia floridana</i>	Hartwrightia	66
<i>Baptisia calycosa</i> var. <i>calycosa</i>	Canby's Wild Indigo	43
<i>Calydorea coelestina</i>	Bartram's Ixia	41
<i>Forestiera godfreyi</i>	Godfrey's Swampprivet	19
<i>Monotropis reynoldsiae</i>	Pygmy Pipes	15
<i>Peperomia humilis</i>	Terrestrial Peperomia	14
<i>Ctenium floridanum</i>	Florida Toothache Grass	10
<i>Spiranthes polyantha</i>	Green Ladies'-tresses	10
<i>Balduina atropurpurea</i>	Purple Honeycomb-head	9
<i>Pteroglossaspis ecristata</i>	Giant Orchid	6

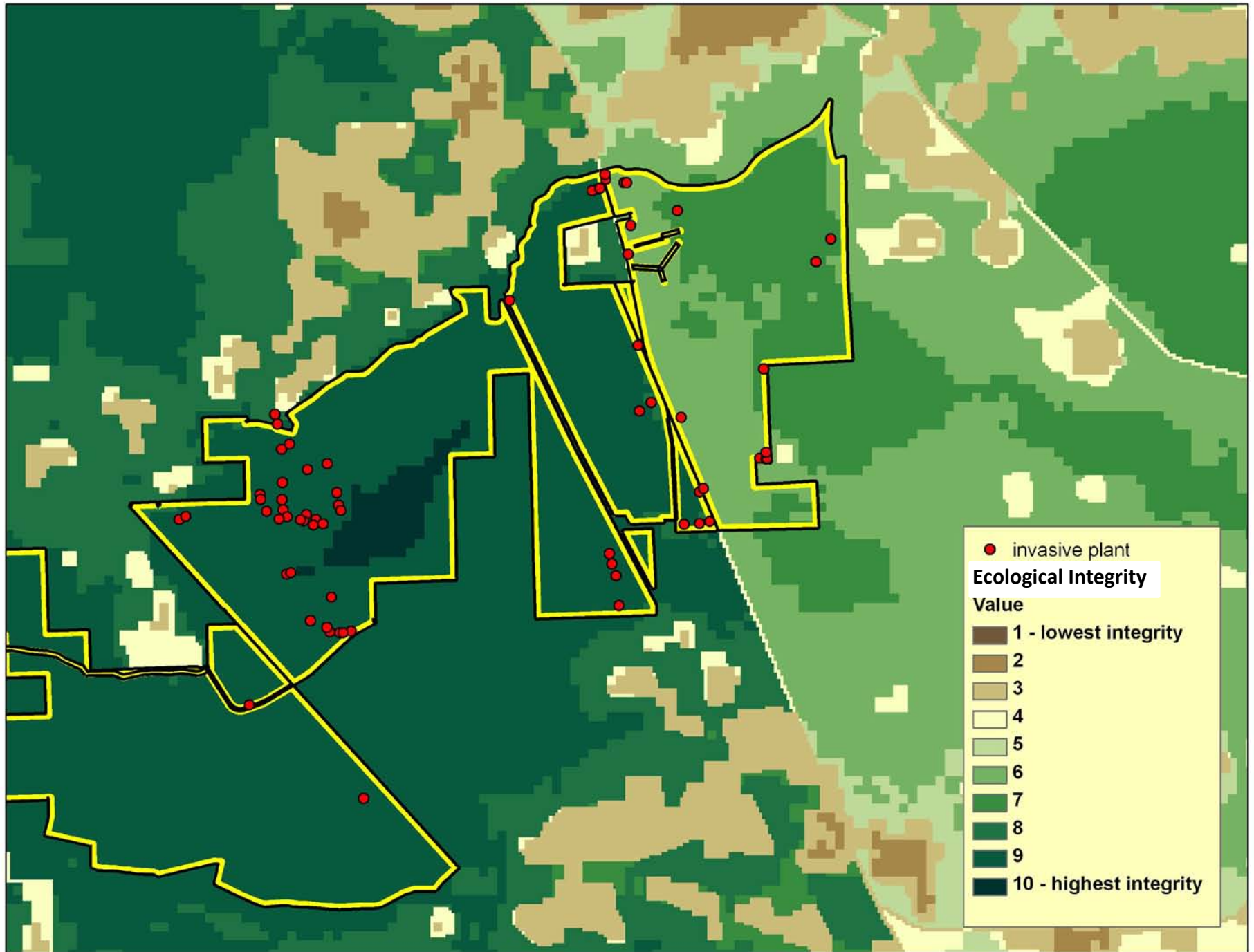
\*Data for First Coast CISMA boundaries

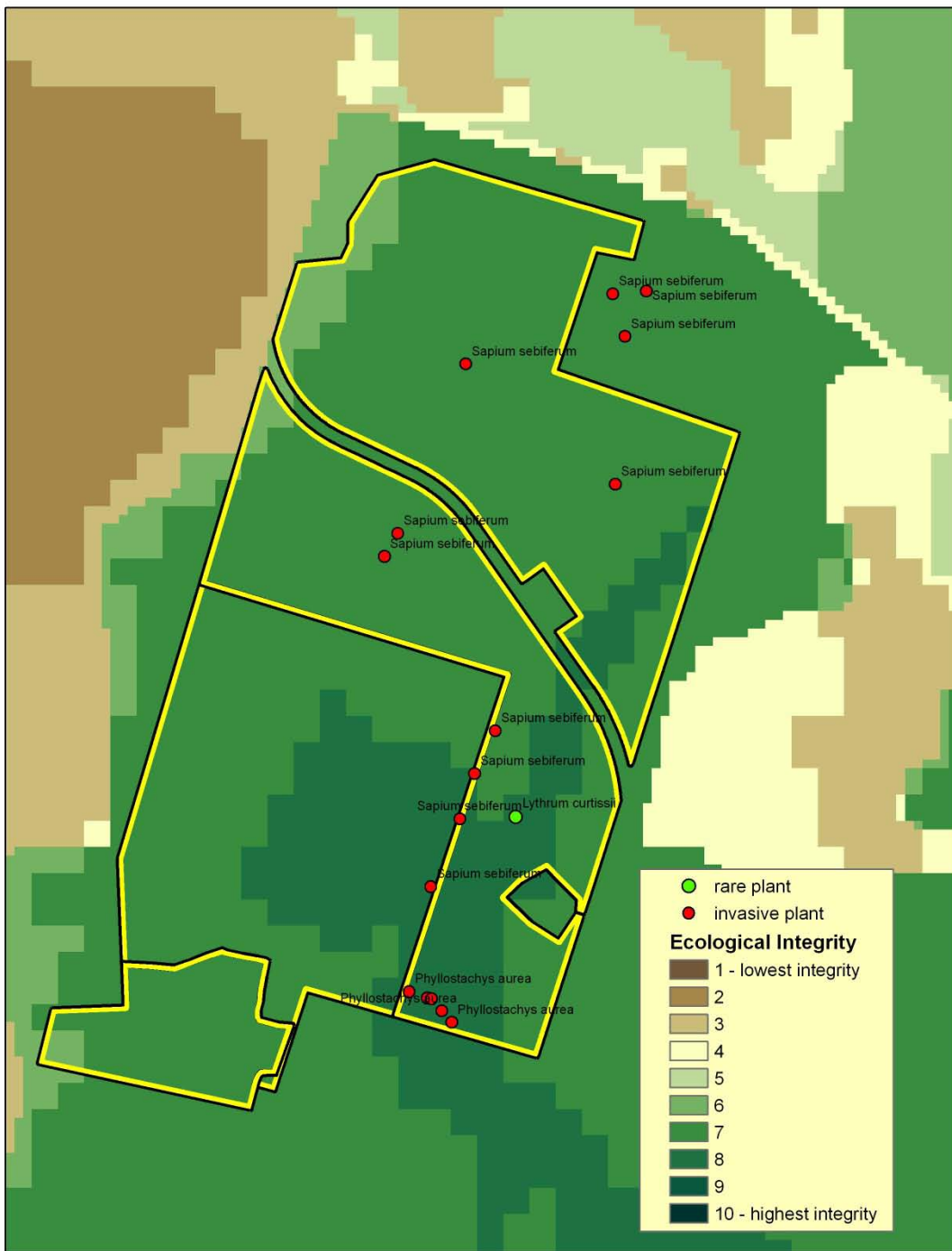
# Top Ten Invasive Plants within 200 m of Rare Plant Occurrence\*

Invasive Plant Scientific Name	Invasive Plant Common Name	No. Rare Plant Occurrences Intersected
Lygodium japonicum	Japanese climbing fern	41
Panicum repens	torpedo grass	37
Melia azedarach	Chinaberry	27
Albizia julibrissin	mimosa	24
Sapium sebiferum	Chinese tallow	22
Dioscorea bulbifera	air-potato	18
Cinnamomum camphora	camphor tree	14
Lantana camara	lantana	14
Colocasia esculenta	taro	8
Sesbania punicea	purple sesban	8

\*Data for First Coast CISMA boundaries









# Technical Assistance

Frank Price, FNAI Data Manager

[fprice@fnai.org](mailto:fprice@fnai.org)

850.224.8207 x 210

