



BushBlitz
SPECIES DISCOVERY PROGRAM



BUSH BLITZ SPECIES DISCOVERY PROGRAM



Upper Bridge Creek Supplement



CARING FOR
OUR COUNTRY


bhpbilliton
resourcing the future

 **EARTHWATCH**
INSTITUTE

1973-2013
40
Australian Biological
Resources Study

Contents

Key

Appendix A: Species Lists	3
Fauna	4
Vertebrates	4
Mammals	4
Birds	4
Frogs and Toads	6
Reptiles	7
Invertebrates	8
Butterflies	8
True Bugs	8
Dragonflies and Damselflies	8
Spiders	8
Snails and Slugs	8
Flora	9
Flowering Plants	9
Conifers	13
Cycads	13
Ferns	13
Liverworts	13
Mosses	13
Lichens	14
Fungi	14
Appendix B: Threatened Species	15
Fauna	16
Vertebrates	16
Mammals	16
Birds	16
Invertebrates	16
Spiders	16
Flora	16
Flowering Plants	16
Appendix C: Exotic and Pest Species	17
Flora	18
Flowering Plants	18

- ☐ = Previously recorded on the reserve and found on this survey
- * = New record for this reserve
- ^ = Exotic/Pest
- # = EPBC listed
- ~ = NCA listed

- EPBC = *Environment Protection and Biodiversity Conservation Act 1999* (Commonwealth)
- NCA = *Nature Conservation Act 1992* (Queensland)

Colour coding for entries:

Black = Previously recorded on the reserve and found on this survey

Brown = **Putative new species**

Blue = Previously recorded on the reserve but not found on this survey





Appendix A: Species Lists

Nomenclature and taxonomy used in this appendix are consistent with that from the Australian Faunal Directory (AFD), the Australian Plant Name Index (APNI) and the Australian Plant Census (APC).

Current at March 2013



Fauna

Vertebrates

Mammals		
Family	Species	Common name
Dasyuridae	<i>Sminthopsis</i> sp. *	Dunnart
Macropodidae	<i>Macropus agilis</i> *	Agile Wallaby
	<i>Macropus robustus</i> *	Common Wallaroo
	<i>Petrogale godmani</i> *	Godman's Rock-wallaby
Muridae	<i>Zyomys argurus</i> *	Common Rock-rat
Petauridae	<i>Petaurus</i> cf. <i>norfolcensis</i> *	Squirrel Glider
Pteropodidae	<i>Pteropus conspicillatus</i> # *	Spectacled Flying-fox
	<i>Pteropus scapulatus</i> *	Little Red Flying-fox
Vespertilionidae	<i>Nyctophilus bifax</i> *	Eastern Long-eared Bat
	<i>Vespadelus</i> sp. *	Cave Bat

Birds		
Family	Species	Common name
Acanthizidae	<i>Gerygone magnirostris</i> *	Large-billed Gerygone
	<i>Gerygone mouki</i> *	Brown Gerygone
	<i>Gerygone palpebrosa</i> *	Fairy Gerygone
Accipitridae	<i>Accipiter cirrocephalus</i> *	Collared Sparrowhawk
	<i>Accipiter fasciatus</i> *	Brown Goshawk
	<i>Accipiter novaehollandiae</i> ~ *	Grey Goshawk
	<i>Aquila audax</i> *	Wedge-tailed Eagle
	<i>Erythroriorchis radiatus</i> ~ # *	Red Goshawk
	<i>Haliaeetus leucogaster</i> *	White-bellied Sea-eagle
	<i>Haliastur sphenurus</i> *	Whistling Kite
Aegothelidae	<i>Aegotheles cristatus</i> *	Australian Owlet-nightjar
Alcedinidae	<i>Ceyx azureus</i> *	Azure Kingfisher
	<i>Ceyx pusilla</i> *	Little Kingfisher
	<i>Dacelo leachii</i> *	Blue-winged Kookaburra
	<i>Dacelo novaeguineae</i> *	Laughing Kookaburra
	<i>Todiramphus macleayii</i> *	Forest Kingfisher
	<i>Todiramphus sanctus</i> *	Sacred Kingfisher



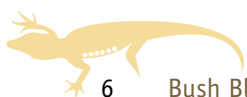


Birds		
Family	Species	Common name
Artamidae	<i>Cracticus mentalis</i> *	Black-backed Butcherbird
	<i>Cracticus nigrogularis</i> *	Pied Butcherbird
	<i>Cracticus quoyi jardini</i> *	Black Butcherbird (coastal Cape York Peninsula subspecies)
	<i>Strepera graculina magnirostris</i> *	Pied Currawong (Cape York Peninsula subspecies)
Cacatuidae	<i>Cacatua galerita</i> *	Sulphur-crested Cockatoo
Campephagidae	<i>Coracina novaehollandiae</i> *	Black-faced Cuckoo-shrike
	<i>Coracina papuensis</i> *	White-bellied Cuckoo-shrike
	<i>Coracina tenuirostris</i> *	Cicadabird
	<i>Lalage leucomela</i> *	Varied Triller
Caprimulgidae	<i>Caprimulgus macrurus</i> *	Large-tailed Nightjar
Columbidae	<i>Geopelia humeralis</i> *	Bar-shouldered Dove
	<i>Geopelia striata</i> *	Peaceful Dove
	<i>Phaps chalcoptera</i> *	Common Bronzewing
Coraciidae	<i>Eurystomus orientalis</i> *	Dollarbird
Corvidae	<i>Corvus orru</i> *	Torresian Crow
Cuculidae	<i>Centropus phasianinus</i> *	Pheasant Coucal
Dicruridae	<i>Dicrurus bracteatus atrabectus</i> *	Sangled Drongo (Cape York Peninsula subspecies)
Estrildidae	<i>Poephila cincta atropygialis</i> *	Black-throated Finch (Black-rumped subspecies)
Falconidae	<i>Falco longipennis</i> *	Australian Hobby
Maluridae	<i>Malurus amabilis</i> *	Lovely Fairy-wren
Megapodiidae	<i>Alectura lathami</i> *	Australian Brush-turkey, Scrub Turkey, Wild Turkey, Yellow-wattled Brush Turkey
	<i>Megapodius reinwardt</i> *	Orange-footed Scrubfowl
Meliphagidae	<i>Cissomela pectoralis</i> *	Banded Honeyeater
	<i>Lichenostomus flavescens</i> *	Yellow-tinted Honeyeater
	<i>Lichenostomus flavus</i> *	Yellow Honeyeater
	<i>Lichenostomus unicolor</i> *	White-gaped Honeyeater
	<i>Meliphaga gracilis</i> *	Graceful Honeyeater
	<i>Meliphaga notata</i> *	Yellow-spotted Honeyeater
	<i>Melithreptus albogularis</i> *	White-throated Honeyeater
	<i>Myzomela obscura</i> *	Dusky Honeyeater
	<i>Myzomela sanguinolenta</i> *	Scarlet Honeyeater
	<i>Philemon buceroides</i> *	Helmeted Friarbird
	<i>Philemon corniculatus</i> *	Noisy Friarbird
	<i>Trichodere cockerelli</i> *	White-streaked Honeyeater
<i>Xanthotis macleayanus</i> *	Macleay's Honeyeater	
Meropidae	<i>Merops ornatus</i> *	Rainbow Bee-eater



Birds		
Family	Species	Common name
Monarchidae	<i>Carterornis leucotis</i> *	White-eared Monarch
	<i>Monarcha frater</i> *	Black-winged Monarch
	<i>Myiagra rubecula</i> *	Leaden Flycatcher
	<i>Myiagra ruficollis</i> *	Broad-billed Flycatcher
	<i>Symphysichrus trivirgatus</i> *	Spectacled Monarch
Motacillidae	<i>Anthus novaeseelandiae</i> *	Australasian Pipit, Australian Pipit
Nectariniidae	<i>Dicaeum hirundinaceum</i> *	Mistletoebird
	<i>Nectarinia jugularis</i> *	Olive-backed Sunbird
Oriolidae	<i>Oriolus flavocinctus</i> *	Yellow Oriole
Pachycephalidae	<i>Colluricincla harmonica</i> *	Grey Shrike-thrush
	<i>Colluricincla megarhyncha</i> *	Little Shrike-thrush
	<i>Pachycephala simplex peninsulae</i> *	Grey Whistler (north-eastern Queensland subspecies)
Pardalotidae	<i>Pardalotus rubricatus</i> *	Red-browed Pardalote
Petroicidae	<i>Poecilodryas superciliosa</i> *	White-browed Robin
Podargidae	<i>Podargus strigoides</i> *	Tawny Frogmouth
Psittacidae	<i>Aprosmictus erythropterus</i> *	Red-winged Parrot
	<i>Platycercus adscitus adscitus</i> *	Pale-headed Rosella (northern form)
	<i>Trichoglossus chlorolepidotus</i> *	Scaly-breasted Lorikeet
	<i>Trichoglossus haematodus</i> *	Rainbow Lorikeet
Ptilonorhynchidae	<i>Ptilonorhynchus nuchalis</i> *	Great Bowerbird
Rhipiduridae	<i>Rhipidura rufifrons</i> *	Rufous Fantail
	<i>Rhipidura rufiventris</i> *	Northern Fantail
Strigidae	<i>Ninox connivens</i> *	Barking Owl
	<i>Ninox novaeseelandiae</i> *	Southern Boobook
Timaliidae	<i>Zosterops lateralis</i> *	Silvereye
Tytonidae	<i>Tyto javanica</i> *	Eastern Barn Owl

Frogs and Toads		
Family	Species	Common name
Hylidae	<i>Litoria nigrofrenata</i> *	Bridle Frog
Myobatrachidae	<i>Uperoleia lithomoda</i> *	Stonemason Toadlet
	<i>Uperoleia mimula</i> *	Mimic Toadlet, Mimicking Toadlet
	<i>Uperoleia</i> sp. *	Toadlet
Ranidae	<i>Rana daemeli</i> *	Water Frog, Wood Frog





Reptiles		
Family	Species	Common name
Agamidae	<i>Diporiphora bilineata</i> *	Two-lined Dragon
Boidae	<i>Antaresia maculosa</i> *	Spotted Python
Colubridae	<i>Boiga irregularis</i> *	Brown Tree Snake, Night Tiger
	<i>Dendrelaphis punctulatus</i> *	Common Tree Snake, Green Tree Snake
	<i>Stegonotus cucullatus</i> *	Slaty-grey Snake
Diplodactylidae	<i>Oedura castelnaui</i> *	Northern Velvet Gecko
	<i>Oedura coggeri</i> *	Northern Spotted Velvet Gecko
	<i>Oedura rhombifer</i> *	Zigzag Velvet Gecko
Elapidae	<i>Acanthophis praelongus</i> *	Northern Death Adder
	<i>Demansia psammophis</i> *	Yellow-faced Whip Snake
	<i>Demansia vestigiata</i> *	Black Whipsnake, Lesser Black Whipsnake
Gekkonidae	<i>Cyrtodactylus tuberculatus</i> *	Ring-tailed Gecko
	<i>Gehyra dubia</i> *	Dubious Dtella
	<i>Nactus cheverti</i> *	Chevert's Gecko
Scincidae	<i>Carlia jarnoldae</i> *	Lined Rainbow-skink
	<i>Carlia longipes</i> *	Closed-litter Rainbow-skink
	<i>Carlia rostralis</i> *	Black-throated Rainbow-skink
	<i>Carlia schmeltzii</i> *	Robust Rainbow-skink
	<i>Carlia</i> sp. *	unidentified Rainbow Skink
	<i>Cryptoblepharus virgatus</i> *	Cream-striped Shinning-skink, Striped Snake-eyed Skink
	<i>Ctenotus nullum</i> *	Nullum Ctenotus
	<i>Ctenotus quinkan</i> *	Quinkan Ctenotus
	<i>Eulamprus brachysoma</i> *	Northern Barsided Skink
	<i>Lygisaurus</i> sp. *	Litter-skink
	<i>Proablepharus tenuis</i> *	Northern Soil-crevice Skink, Slender Snake-eyed Skink
Varanidae	<i>Varanus storri</i> *	Storr's Monitor



Invertebrates

Butterflies	
Family	Species
Lycaenidae	<i>Famegana alsulus alsulus</i> *
	<i>Jamides phaseli</i> *
Nymphalidae	<i>Hypocysta adiante adiante</i> *
	<i>Mycalesis perseus perseus</i> *

True Bugs	
Family	Species
Alydidae	<i>Leptocoris acuta</i> *
	<i>Mutusca brevicornis</i> *
Belostomatidae	<i>Diplonychus rusticus</i> *
Coreidae	<i>Clavigralloides acantharis</i> *
Cydnidae	Cydnidae sp. 30 *
Cymidae	<i>Cymus</i> sp. 76 (nr <i>novaezelandiae</i>) *
Gerridae	<i>Limnogonus luctuosus</i> *
Miridae	nr <i>Angerianus</i> n. sp. 81 *
	<i>Democoris</i> sp. 83 *
	<i>Nesidiocoris tenuis</i> *
	<i>Pilophorini</i> sp. 90 *
	<i>Pseudoloxops</i> n. sp. 96 *
	nr <i>Zanchius</i> n. sp. 89 *
	nr <i>Zanchius</i> n. sp. 91 *
Ninidae	<i>Ninus insignis</i> *
	<i>Ninus</i> sp. 74 *
	<i>Ninus</i> sp. 74a *
Pachygronthidae	<i>Pachygrontha</i> sp. 77 *
	<i>Stenophyella macreta</i> *
Pentatomidae	<i>Cephaloplatus</i> n. sp. 33 *
	<i>Oncocoris</i> sp. 41 *
Reduviidae	Reduviidae sp. 6 *
Rhyparochromidae	Myodochini sp. 65 *
	<i>Paromius australis</i> *
	<i>Poeantius australopictus</i> *
	<i>Pseudopachybrachius guttus</i> *
Tessaratomidae	<i>Cumare pallida</i> *

Dragonflies and Damselflies	
Family	Species
Coenagrionidae	<i>Ischnura aurora</i> *
	<i>Ischnura heterosticta</i> *
Corduliidae	<i>Hemicordulia intermedia</i> *
Lestidae	<i>Lestes concinnus</i> *
Libellulidae	<i>Diplacodes haematodes</i> *
	<i>Diplacodes trivialis</i> *
	<i>Nannodiplax rubra</i> *
	<i>Orthetrum caledonicum</i> *

Spiders	
Family	Species
Barychelidae	<i>Mandjelia</i> n. sp. 4 *
Dipluridae	<i>Cethegus rufipes</i> n. sp. *
Nemesiidae	<i>Aname</i> (n. sp. ?) *
Theraphosidae	<i>Phlogius crassipes</i> gp. n. sp. ~ *

Snails and Slugs	
Family	Species
Camaenidae	<i>Zyghelix forsteriana</i> *





Flora

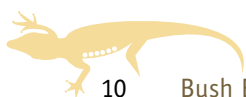
Flowering Plants	
Family	Species
Acanthaceae	<i>Nelsonia campestris</i> *
	<i>Pseuderanthemum variabile</i> *
Anacardiaceae	<i>Blepharocarya involucrigera</i> *
Annonaceae	<i>Polyalthia nitidissima</i> *
Apocynaceae	<i>Alstonia actinophylla</i> *
	<i>Hoya australis</i> subsp. <i>australis</i> *
	<i>Marsdenia connivens</i> *
	<i>Parsonsia velutina</i> *
	<i>Sarcostemma viminale</i> subsp. <i>brunonianum</i> *
	<i>Tabernaemontana orientalis</i> *
Aquifoliaceae	<i>Ilex arnhemensis</i> subsp. <i>ferdinandi</i> *
Araliaceae	<i>Astrotricha pterocarpa</i> *
	<i>Polyscias australiana</i> *
Arecaceae	<i>Livistona muelleri</i> *
Aristolochiaceae	<i>Aristolochia pubera</i> var. <i>pubera</i> *
Asparagaceae	<i>Lomandra banksii</i> *
	<i>Thysanotus tuberosus</i> subsp. <i>tuberosus</i> *
Asteraceae	<i>Blumea saxatilis</i> *
	<i>Cyanthillium cinereum</i> *
	<i>Emilia sonchifolia</i> var. <i>sonchifolia</i> ^ *
	<i>Peripleura diffusa</i> *
	<i>Pleurocarpaea denticulata</i> *
	<i>Praxelis clematidea</i> ^ *
Campanulaceae	<i>Wahlenbergia caryophylloides</i> *
Cannabaceae	<i>Trema tomentosa</i> var. <i>aspera</i> *
Capparaceae	<i>Capparis canescens</i> *
Casuarinaceae	<i>Allocasuarina littoralis</i> *
Celastraceae	<i>Elaeodendron melanocarpum</i> *
	<i>Hippocratea barbata</i> *
	<i>Maytenus fasciculiflora</i> *
	<i>Pleurostyliia opposita</i> *
	<i>Stackhousia intermedia</i> *

Flowering Plants	
Family	Species
Chrysobalanaceae	<i>Parinari nonda</i> *
Colchicaceae	<i>Schelhammera multiflora</i> *
Combretaceae	<i>Terminalia muelleri</i> *
Commelinaceae	<i>Aneilema siliculosum</i> *
	<i>Cartonema spicatum</i> var. <i>spicatum</i> *
	<i>Commelina ensifolia</i> *
Convolvulaceae	<i>Evolvulus alsinoides</i> *
	<i>Ipomoea gracilis</i> *
	<i>Xenostegia tridentata</i> *
Cyperaceae	<i>Arthrostylis aphylla</i> *
	<i>Bulbostylis barbata</i> *
	<i>Cyperus aquatilis</i> *
	<i>Cyperus castaneus</i> *
	<i>Cyperus cristulatus</i> *
	<i>Cyperus decompositus</i> *
	<i>Cyperus eboracensis</i> *
	<i>Cyperus haspan</i> subsp. <i>juncoides</i> *
	<i>Cyperus scaber</i> *
	<i>Fimbristylis acicularis</i> *
	<i>Fimbristylis furva</i> *
	<i>Fimbristylis nutans</i> *
	<i>Fimbristylis recta</i> *
	<i>Fuirena ciliaris</i> *
	<i>Fuirena umbellata</i> *
	<i>Gahnia aspera</i> *
<i>Gahnia sieberiana</i> *	
<i>Rhynchospora corymbosa</i> *	
<i>Rhynchospora pterochaeta</i> *	
<i>Schoenus sparteus</i> *	
<i>Scleria brownii</i> *	
<i>Scleria ciliaris</i> *	
<i>Scleria rugosa</i> *	
<i>Scleria</i> sp. (Laura N.Byrnes 3285) *	



Flowering Plants		
Family	Species	
Cyperaceae	<i>Scleria sphacelata</i> *	
	<i>Trachystylis stradbokensis</i> *	
	<i>Tricostularia undulata</i> *	
Dilleniaceae	<i>Dillenia alata</i> *	
	<i>Hibbertia araneolifera</i> *	
	<i>Hibbertia banksii</i> f. <i>banksii</i> *	
	<i>Hibbertia laurana</i> *	
Droseraceae	<i>Drosera burmanni</i> *	
Ebenaceae	<i>Diospyros compacta</i> *	
Ericaceae	<i>Leucopogon lavarackii</i> *	
	<i>Leucopogon ruscifolius</i> *	
Eriocaulaceae	<i>Eriocaulon fistulosum</i> *	
Euphorbiaceae	<i>Antidesma ghaesembilla</i> *	
	<i>Choriceras tricorne</i> *	
	<i>Euphorbia carissoides</i> ~ # *	
	<i>Microstachys chamaelea</i> *	
	<i>Neoroepora banksii</i> *	
	<i>Petalostigma banksii</i> *	
	<i>Petalostigma pubescens</i> *	
	<i>Phyllanthus dallachyanus</i> *	
	<i>Poranthera microphylla</i> *	
	<i>Sauropus elachophyllus</i> var. <i>glaber</i> *	
	<i>Sauropus podenzanae</i> *	
	Fabaceae	<i>Acacia calyculata</i> *
		<i>Acacia crassicarpa</i> *
<i>Acacia flavescens</i> *		
<i>Acacia humifusa</i> *		
<i>Acacia hyaloneura</i> *		
<i>Acacia leptoloba</i> *		
<i>Acacia multisiliqua</i> *		
<i>Acacia platycarpa</i> *		
<i>Acacia rothii</i> *		
<i>Acacia simsii</i> *		
<i>Acacia umbellata</i> *		
<i>Albizia procera</i> *		
<i>Cajanus marmoratus</i> *		
<i>Chamaecrista nomame</i> var. <i>nomame</i> *		

Flowering Plants	
Family	Species
Fabaceae	<i>Crotalaria brevis</i> *
	<i>Crotalaria medicaginea</i> var. <i>neglecta</i> *
	<i>Daviesia flava</i> *
	<i>Desmodium filiforme</i> *
	<i>Desmodium pullenii</i> *
	<i>Desmodium rhytidophyllum</i> *
	<i>Desmodium trichostachyum</i> *
	<i>Flemingia parviflora</i> *
	<i>Galactia</i> sp. (Laura J.C.Tothill JT53A) *
	<i>Glycine curvata</i> *
	<i>Glycine cyrtoloba</i> *
	<i>Gompholobium</i> sp. (Point Archer J.Wrigley+NQ1301) *
	<i>Hovea parvicalyx</i> *
	<i>Indigofera pratensis</i> *
	<i>Jacksonia thesioides</i> *
	<i>Lamprolobium fruticosum</i> *
	<i>Tephrosia astragaloides</i> *
	<i>Tephrosia filipes</i> var. <i>latifolia</i> *
	<i>Tephrosia juncea</i> *
	<i>Tephrosia</i> sp. (Battle Camp K.R.McDonald KRM7106) *
	<i>Tephrosia</i> sp. (Copperfield River P.I.Forster PIF14768) *
	<i>Tephrosia</i> sp. (Iron Range L.J.Brass 19242) *
	<i>Tephrosia</i> sp. (Laura M.B.Thomas 283) *
<i>Vandasina retusa</i> *	
<i>Vigna lanceolata</i> var. <i>filiformis</i> *	
<i>Zornia muriculata</i> subsp. <i>angustata</i> *	
Goodeniaceae	<i>Goodenia heteroptera</i> ~ *
	<i>Goodenia janamba</i> *
Haemodoraceae	<i>Haemodorum coccineum</i> *
Hemerocallidaceae	<i>Dianella incollata</i> ~ *
	<i>Tricoryne anceps</i> subsp. <i>pterocaulon</i> *





Flowering Plants	
Family	Species
Lamiaceae	<i>Anisomeles malabarica</i> *
	<i>Chloanthes parviflora</i> *
	<i>Plectranthus apricus</i> *
	<i>Plectranthus congestus</i> *
Lauraceae	<i>Cassytha capillaris</i> *
	<i>Cryptocarya clarksoniana</i> *
	<i>Endiandra glauca</i> *
	<i>Litsea breviumbellata</i> *
Lentibulariaceae	<i>Utricularia caerulea</i> *
	<i>Utricularia chrysantha</i> *
Linderniaceae	<i>Lindernia crustacea</i> *
	<i>Lindernia scapigera</i> *
Loganiaceae	<i>Mitrasacme ambigua</i> *
	<i>Mitrasacme brachystemonea</i> *
	<i>Mitrasacme connata</i> *
	<i>Mitrasacme nudicaulis</i> var. <i>nudicaulis</i> *
	<i>Mitrasacme patens</i> *
	<i>Mitrasacme pygmaea</i> *
Loranthaceae	<i>Amyema biniflora</i> *
	<i>Dendrophthoe glabrescens</i> *
Malvaceae	<i>Grewia mesomischa</i> *
	<i>Hibiscus meraukensis</i> *
Melastomataceae	<i>Melastoma malabathricum</i> subsp. <i>malabathricum</i> *
	<i>Memecylon pauciflorum</i> *
Meliaceae	<i>Dysoxylum acutangulum</i> subsp. <i>foveolatum</i> *
Menispermaceae	<i>Tinospora smilacina</i> *
Monimiaceae	<i>Wilkiea rigidifolia</i> *
Moraceae	<i>Ficus microcarpa</i> *
Myrtaceae	<i>Asteromyrtus lysicephala</i> *
	<i>Corymbia clarksoniana</i> *
	<i>Corymbia hylandii</i> *
	<i>Corymbia nesophila</i> *
	<i>Corymbia stockeri</i> subsp. <i>stockeri</i> *
	<i>Eucalyptus acmenoides</i> *
	<i>Eucalyptus brassiana</i> *
	<i>Eucalyptus crebra</i> *
	<i>Eucalyptus phoenicea</i>

Flowering Plants	
Family	Species
Myrtaceae	<i>Eucalyptus tetrodonta</i> *
	<i>Gossia retusa</i> *
	<i>Homoranthus tropicus</i> ~ *
	<i>Lithomyrtus obtusa</i> *
	<i>Melaleuca nervosa</i> *
	<i>Melaleuca viridiflora</i> *
	<i>Neofabricia myrtifolia</i> *
	<i>Syzygium pringlei</i> ~ *
	<i>Thryptomene oligandra</i> *
	<i>Tristaniopsis exiliflora</i> *
<i>Xanthostemon umbrosus</i> *	
Olacaceae	<i>Olax aphylla</i> *
Oleaceae	<i>Jasminum elongatum</i> *
Onagraceae	<i>Ludwigia hyssopifolia</i> ^ *
Orchidaceae	<i>Nervilia holochila</i> *
	<i>Buchnera gracilis</i> *
	<i>Buchnera linearis</i> *
Orobanchaceae	<i>Centranthera cochinchinensis</i> *
	<i>Eustrephus latifolius</i> *
	<i>Philydrum lanuginosum</i> *
Philesiaceae	<i>Philydrum lanuginosum</i> *
Philydraceae	<i>Philydrum lanuginosum</i> *
Plantaginaceae	<i>Limnophila fragrans</i> *
Poaceae	<i>Alloteropsis semialata</i> *
	<i>Aristida macroclada</i> subsp. <i>queenslandica</i> *
	<i>Aristida perniciososa</i> *
	<i>Aristida utilis</i> var. <i>utilis</i> *
	<i>Arundinella nepalensis</i> *
	<i>Chrysopogon setifolius</i> *
	<i>Coelachne pulchella</i> *
	<i>Digitaria diminuta</i> *
	<i>Dimeria acinaciformis</i> *
	<i>Ectrosia leporina</i> *
	<i>Eragrostis brownii</i> *
	<i>Eragrostis schultzei</i> *
	<i>Eriachne obtusa</i> *
	<i>Eriachne pallescens</i> *
	<i>Eriachne pulchella</i> var. <i>pulchella</i> *
<i>Eriachne stipacea</i> *	
<i>Eriachne trisetata</i> *	



Flowering Plants	
Family	Species
Poaceae	<i>Germainia grandiflora</i> *
	<i>Heteropogon triticeus</i> *
	<i>Ischaemum australe</i> var. <i>villosum</i> *
	<i>Ischaemum fragile</i> *
	<i>Mnesithea formosa</i> *
	<i>Mnesithea rottboellioides</i> *
	<i>Panicum effusum</i> *
	<i>Panicum seminudum</i> var. <i>cairnsianum</i> *
	<i>Panicum simile</i> *
	<i>Panicum trichoides</i> *
	<i>Paspalidium constrictum</i> *
	<i>Paspalidium distans</i> *
	<i>Paspalidium gausum</i> *
	<i>Paspalidium spartellum</i> *
	<i>Pheidochloa gracilis</i> *
	<i>Pseudopogonatherum contortum</i> *
	<i>Sacciolepis indica</i> *
	<i>Sacciolepis myosuroides</i> *
	<i>Schizachyrium crinizonatum</i> *
	<i>Schizachyrium fragile</i> *
	<i>Schizachyrium pseudeulalia</i> *
	<i>Setaria surgens</i> *
	<i>Sorghum angustum</i> *
	<i>Sorghum plumosum</i> *
	<i>Thaumastochloa monilifera</i> *
	<i>Thaumastochloa pubescens</i> *
<i>Thaumastochloa rariflora</i> *	
<i>Themeda triandra</i> *	
<i>Triodia microstachya</i> *	
<i>Urochloa holosericea</i> *	
<i>Urochloa polyphylla</i> *	
<i>Urochloa subquadripara</i> ^ *	
Polygalaceae	<i>Comesperma secundum</i> *
	<i>Polygala exsuarrosa</i> *
	<i>Polygala linariifolia</i> *
	<i>Salomonina ciliata</i> *

Flowering Plants	
Family	Species
Portulacaceae	<i>Calandrinia arenicola</i> *
	<i>Portulaca bicolor</i> *
Primulaceae	<i>Myrsine urceolata</i> *
Proteaceae	<i>Banksia dentata</i> *
	<i>Grevillea pteridifolia</i> *
Restionaceae	<i>Dapsilanthus ramosus</i> *
Rhamnaceae	<i>Alphitonia excelsa</i> *
Rhizophoraceae	<i>Carallia brachiata</i> *
Rubiaceae	<i>Atractocarpus sessilis</i> *
	<i>Coelospermum paniculatum</i> var. <i>paniculatum</i> *
	<i>Coelospermum reticulatum</i> *
	<i>Cyclophyllum costatum</i> ~ # *
	<i>Morinda ammitia</i> *
	<i>Morinda reticulata</i> *
	<i>Oldenlandia laceyi</i> *
	<i>Oldenlandia mitrasacmoides</i> subsp. <i>nigricans</i> *
	<i>Psychotria polioSTEMMA</i> *
	<i>Psydrax banksii</i> *
<i>Psydrax lepida</i> *	
<i>Spermacoce marginata</i> *	
Rutaceae	<i>Halfordia kendack</i> *
Santalaceae	<i>Anthobolus filifolius</i> *
	<i>Exocarpos latifolius</i> *
Sapindaceae	<i>Dodonaea lanceolata</i> var. <i>subsessilifolia</i> *
	<i>Dodonaea malvacea</i> *
	<i>Guioa acutifolia</i> *
Sapotaceae	<i>Chrysophyllum roxburghii</i> ~ *
	<i>Planchonella myrsinifolia</i> *
	<i>Planchonella pohlmaniana</i> var. (Gilbert River C.T.White 1409) *
	<i>Sersalisia sericea</i> *
	<i>Smilacaceae</i>
Stylidiaceae	<i>Smilax blumei</i> *
	<i>Stylidium alsinoides</i> *
	<i>Stylidium cordifolium</i> *
	<i>Stylidium leiophyllum</i> *
	<i>Stylidium oviflorum</i> *





Flowering Plants	
Family	Species
Stylidiaceae	<i>Stylidium pedunculatum</i> *
	<i>Stylidium ramosissimum</i> *
	<i>Stylidium rotundifolium</i> *
	<i>Stylidium tenerum</i> *
Thymelaeaceae	<i>Thecanthes cornucopiae</i> *
Violaceae	<i>Hybanthus enneaspermus</i> *
Vitaceae	<i>Ampelocissus acetosa</i> *
Xanthorrhoeaceae	<i>Xanthorrhoea johnsonii</i> *
Xyridaceae	<i>Xyris complanata</i> *
	<i>Xyris pauciflora</i> *

Conifers	
Family	Species
Podocarpaceae	<i>Podocarpus grayae</i> *

Cycads	
Family	Species
Cycadaceae	<i>Cycas media</i> subsp. <i>banksii</i> *

Ferns	
Family	Species
Blechnaceae	<i>Blechnum orientale</i> *
Davalliaceae	<i>Davallia denticulata</i> *
Dennstaedtiaceae	<i>Pteridium esculentum</i> *
Gleicheniaceae	<i>Dicranopteris linearis</i> var. <i>linearis</i> *
Lindsaeaceae	<i>Lindsaea ensifolia</i> subsp. <i>agatii</i> *
	<i>Lindsaea media</i> *
Polypodiaceae	<i>Drynaria sparsisora</i> *
	<i>Pyrrhosia longifolia</i> *
Pteridaceae	<i>Cheilanthes caudata</i> *
	<i>Cheilanthes contigua</i> *
	<i>Cheilanthes nitida</i> *
	<i>Cheilanthes nudiusscula</i> *
Schizaeaceae	<i>Schizaea dichotoma</i> *

Liverworts	
Family	Species
Fossombroniaceae	<i>Fossombronia</i> sp. 1 *
	<i>Fossombronia</i> sp. 2 *
Frullaniaceae	<i>Frullania yorkiana</i> *
Jungermanniaceae	? <i>Jungermannia</i> sp. *
	<i>Andrewsianthus ?puniceus</i> *
Lejeuneaceae	<i>Acrolejeunea securifolia</i> *
	<i>Cheilolejeunea ?mimosa</i> *

Mosses	
Family	Species
Bartramiaceae	<i>Philonotis</i> sp. *
Bryaceae	<i>Plagiobryum</i> sp. *
Calymperaceae	<i>Calymperes crassinerve</i> *
	<i>Calymperes erosum</i> *
	<i>Calymperes graeffeanum</i> ** *
	<i>Syrrhopodon armatus</i> *
Fissidentaceae	<i>Fissidens</i> sp. 1 *
	<i>Fissidens</i> sp. 2 *
Leucobryaceae	<i>Campylopus ?introflexus</i> *
	<i>Leucobryum</i> cf. <i>chlorophyllosum</i> *
Sematophyllaceae	<i>Sematophyllum subhumile</i> var. <i>subhumile</i> *
Sphagnaceae	<i>Sphagnum</i> cf. <i>cuspidatum</i> *



Lichens	
Family	Species
Arthoniaceae	? <i>Cryptothecia</i> sp. *
Cladoniaceae	<i>Cladonia</i> sp. *
	<i>Ochrolechia</i> sp. *
Coccocarpiaceae	<i>Coccocarpia adnata</i> *
Graphidaceae	<i>Myriotrema</i> sp. *
Lecideaceae	<i>Lecidea</i> sp. *
Mycoblastaceae	<i>Tephromela</i> sp. *
Pannariaceae	<i>Physma byrsaeum</i> *
Parmeliaceae	<i>Flavoparmelia</i> sp. *
	<i>Parmotrema</i> cf. <i>robustum</i> *
	<i>Parmotrema gardneri</i> *
	<i>Relicinopsis ?malaccensis</i> *
Pertusariaceae	? <i>Pertusaria</i> or <i>Ochrolechia</i> sp. *
	? <i>Pertusaria</i> sp. *
	<i>Pertusaria ?xanthoplaca</i> *
Physciaceae	<i>Buellia</i> sp. *
	<i>Dirinaria</i> cf. <i>batavica</i> *
	<i>Pyxine coccifera</i> *
Porinaceae	<i>Porina</i> sp. *
Teloschistaceae	<i>Caloplaca</i> sp. 1 *
	<i>Caloplaca</i> sp. 2 *
	<i>Caloplaca</i> sp. 3 *

Fungi	
Family	Species
Amanitaceae	<i>Amanita</i> sp. *
Cantharellaceae	<i>Cantharellus</i> sp. 1 *
	<i>Cantharellus</i> sp. 2 *
Coprinceae	<i>Coprinus</i> sp. 1 *
	<i>Coprinus</i> sp. 2 *
Coriolaceae	<i>Fomitopsis</i> sp. *
	<i>Pycnoporus</i> sp. *
Craterellaceae	<i>Craterellus</i> sp. *
Crepidotaceae	<i>Tubaria</i> sp. *
Geastraceae	<i>Geastrum</i> sp. *
Hygrophoraceae	<i>Hygrocybe</i> sp. 1 *
	<i>Hygrocybe</i> sp. 2 *
Not agreed	<i>Irpex</i> sp. 1 *
	<i>Irpex</i> sp. 2 *
Not known	<i>Dacrymycetales</i> sp. *
	<i>Polyporales</i> sp. 1 *
	<i>Polyporales</i> sp. 2 *
	<i>Polyporales</i> sp. 3 *
	<i>Polyporales</i> sp. 4 *
	<i>Polyporales</i> sp. 5 *
	<i>Polyporales</i> sp. 6 *
Truffle n. sp. *	
Peniophoraceae	<i>Peniophora</i> sp. *
Physalacriaceae	<i>Xerula flavo-olivacea</i> *
Polyporaceae	<i>Microporus xanthopus</i> *
Russulaceae	<i>Russula</i> aff. <i>persanguinea</i> *
Schizophyllaceae	<i>Schizophyllum commune</i> *
Strobilomycetaceae	<i>Austroboletus</i> sp. *
Thelephoraceae	<i>Thelephora</i> sp. *
Tricholomataceae	? <i>Marasmiellus</i> sp. *
	<i>Gymnopus</i> sp. *
	Laccaria n. sp. *
	<i>Marasmius crinis-equi</i> group *
	<i>Tricholoma</i> sp. *





Appendix B: Threatened Species

Nomenclature and taxonomy used in this appendix are consistent with that from the Australian Faunal Directory (AFD), the Australian Plant Name Index (APNI) and the Australian Plant Census (APC).

Current at March 2013



Fauna

Vertebrates

Mammals		
Species	Common name	Status
<i>Pteropus conspicillatus</i> *	Spectacled Flying-fox	EPBC — Vulnerable

Birds		
Species	Common name	Status
<i>Accipiter novaehollandiae</i> *	Grey Goshawk	NCA — Near Threatened
<i>Erythrorchis radiatus</i> *	Red Goshawk	EPBC — Vulnerable, NCA — Endangered

Invertebrates

Spiders	
Species	Status
<i>Phlogius crassipes</i> gp. n. sp. *	NCA — Least Concern

Flora

Flowering Plants	
Species	Status
<i>Chrysophyllum roxburghii</i> *	NCA — Near Threatened
<i>Cyclophyllum costatum</i> *	EPBC — Vulnerable, NCA — Vulnerable
<i>Dianella incollata</i> *	NCA — Near Threatened
<i>Euphorbia carissoides</i> *	EPBC — Vulnerable, NCA — Vulnerable
<i>Goodenia heteroptera</i> *	NCA — Near Threatened
<i>Homoranthus tropicus</i> *	NCA — Near Threatened
<i>Syzygium pringlei</i> *	NCA — Near Threatened





Appendix C: Exotic and Pest Species

Nomenclature and taxonomy used in this appendix are consistent with that from the Australian Faunal Directory (AFD), the Australian Plant Name Index (APNI) and the Australian Plant Census (APC).

Current at March 2013



Flora

Flowering Plants	
Species	Common name
<i>Emilia sonchifolia</i> var. <i>sonchifolia</i> *	Emilia
<i>Ludwigia hyssopifolia</i> *	Yellow Willow Herb
<i>Praxelis clematidea</i> *	Praxelis
<i>Urochloa subquadripara</i> *	Green Summer Grass





© Copyright Commonwealth of Australia, 2013.



Upper Bridge Creek Queensland 2010. A Bush Blitz survey report supplement is licensed by the Commonwealth of Australia for use under a Creative Commons By Attribution 3.0 Australia licence with the exception of the Coat of Arms of the Commonwealth of Australia, the logo of the agency responsible for publishing the report, content supplied by third parties, and any images depicting people. For licence conditions see: <http://creativecommons.org/licenses/by/3.0/au/>

This report should be attributed as:
'Upper Bridge Creek Queensland 2010. A Bush Blitz survey report supplement, Commonwealth of Australia 2013'.

The Commonwealth of Australia has made all reasonable efforts to identify content supplied by third parties using the following formats: '[name of creator] © Copyright, [name of copyright holder] or © Copyright, [name of copyright holder]'.

Disclaimer

The views and opinions expressed in this publication are those of the authors and do not necessarily reflect those of the Australian Government or the Minister for the Environment.

While reasonable efforts have been made to ensure that the contents of this publication are factually correct, the Commonwealth does not accept responsibility for the accuracy or completeness of the contents, and shall not be liable for any loss or damage that may be occasioned directly or indirectly through the use of, or reliance on, the contents of this publication.

PUBLISHER ABRS, Canberra
EDITOR ABRS
LAYOUT Giraffe Visual Communication Management
DESIGN TEMPLATE ABRS
COVER PHOTO Green Ringtail Possum (*Pseudocheirus archeri*)
 © Copyright, S. Zozaya

All publications are available online at:

www.bushblitz.org.au

This supplement contains the appendices from the Bush Blitz Survey Report:

- + Far North Queensland 2010 including Brooklyn Nature Refuge, Cloudland Nature Refuge, Melsonby (Gaarraay) Nature Refuge, Eubenangee Swamp National Park, Hann Tableland National Park, Melsonby (Gaarraay) National Park, Upper Bridge Creek. ISBN 978 0 642 56875 5.

Supplements available:

- + Brooklyn Nature Refuge
- + Cloudland Nature Refuge
- + Melsonby (Gaarraay) Nature Refuge
- + Eubenangee Swamp National Park
- + Hann Tableland National Park
- + Melsonby (Gaarraay) National Park
- + Upper Bridge Creek

What is Bush Blitz?

Bush Blitz is a three-year, multi-million dollar partnership between the Australian Government, BHP Billiton and Earthwatch Australia to document plants and animals in selected properties across Australia's National Reserve System.

This innovative partnership harnesses the expertise of many of Australia's top scientists from museums, herbaria, universities, and other institutions and organisations across the country.



Bush Blitz survey report

Far North QLD + 2010

Upper Bridge Creek Supplement



CARING FOR
OUR COUNTRY

