



DHM SERIES HAY MOWERS

Models

BUSH HOG® DHM7, DHM8, DHM9, DHM10

Revised 10/19

PARTS MANUAL SECTION 119



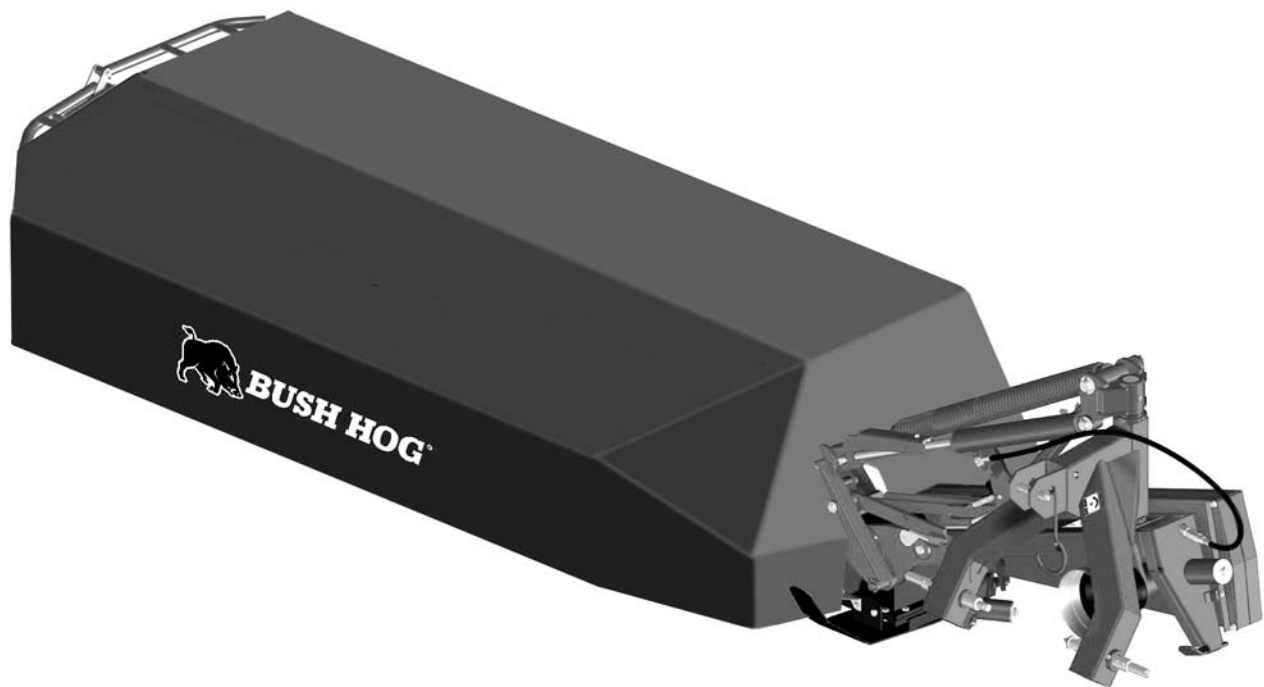
An Operator's Manual was shipped with the equipment. The Operator's Manual is an integral part of the safe operation of this machine and must be maintained with the unit at all times. **READ, UNDERSTAND, and FOLLOW** the Safety and Operation Instructions contained in this manual before operating the equipment. If the Operator's Manual is not with the equipment, contact your dealer or Bush Hog to obtain a copy before operating the equipment.

Safety Video

Important Operating and Safety Instructions are found in the Mower Safety Video that can be instantly accessed on the internet at:
www.algqr.com/bve



www.algqr.com/bve



BUSH HOG®

2501 Griffin Ave.
Selma, AL 36703
Parts Ordering 1-800-304-2836
www.bushhog.com

ATENCIÓN!

LEA EL INSTRUCTIVO

Si No Lee Ingles, Pida Ayuda a Alguien
Que Si Lo Lea Para Que le Traduzca las
Medidas de Seguridad.



A MEMBER OF THE
ALAMO GROUP
ALWAYS ON THE CUTTING EDGE®

©2019 Alamo Group Inc.

Table of Content

DHM SERIES

HAY MOWERS

MODELS DHM7, DHM8, DHM9, DHM10

DHM7

Drive Belts and Shielding	119-1-1
Mainframe Hitch and Related Parts	119-2-1 to 119-2-3
Frame and Canvas Parts	119-3-1 to 119-3-2
Cutter Bar and Gearbox	119-4-1 to 119-4-3
Driveshaft Assembly.....	119-5-1 to 119-5-2
Hydraulic Cylinder Assy.....	119-6-1
Decals, Logo	119-7-1
Decals, Safety	119-7-2 to 119-7-3

DHM8

Drive Belts and Shielding	119-1-2 to 119-1-3
Mainframe Hitch and Related Parts	119-2-4 to 119-2-6
Frame and Canvas Parts	119-3-3 to 119-3-4
Cutter Bar and Gearbox	119-4-4 to 119-4-6
Driveshaft Assembly.....	119-5-3 to 119-5-4
Hydraulic Cylinder Assy	See Mainframe Hitch and Related Parts
Decals, Logo	119-7-1
Decals, Safety	119-7-2 to 119-7-3

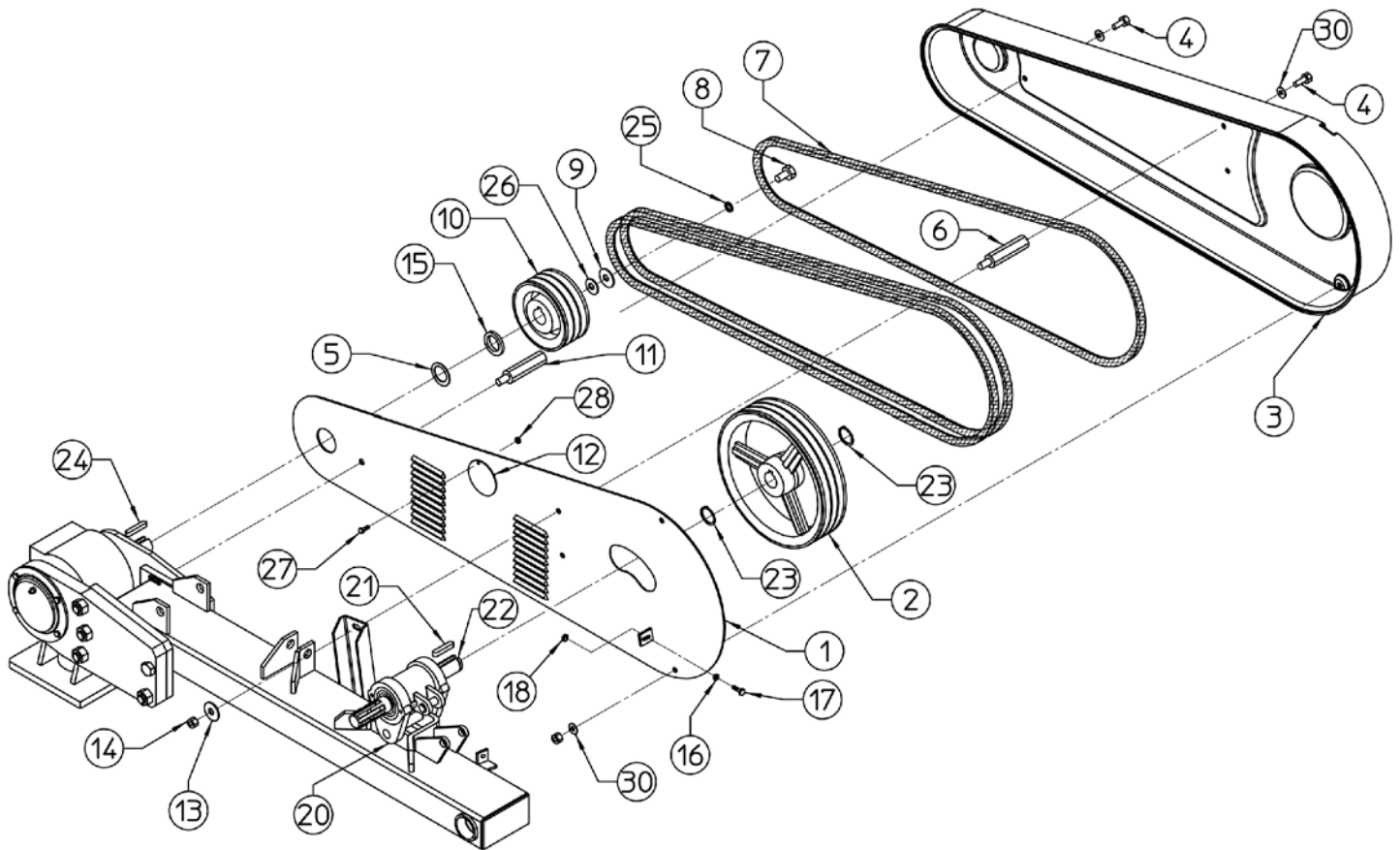
DHM9

Drive Belts and Shielding	119-1-2 to 119-1-3
Mainframe Hitch and Related Parts	119-2-4 to 119-2-6
Frame and Canvas Parts	119-3-5 to 119-3-6
Cutter Bar and Gearbox	119-4-7 to 119-4-9
Driveshaft Assembly.....	119-5-3 to 119-5-4
Hydraulic Cylinder Assy	See Mainframe Hitch and Related Parts
Decals, Logo	119-7-1
Decals, Safety	119-7-2 to 119-7-3

DHM10

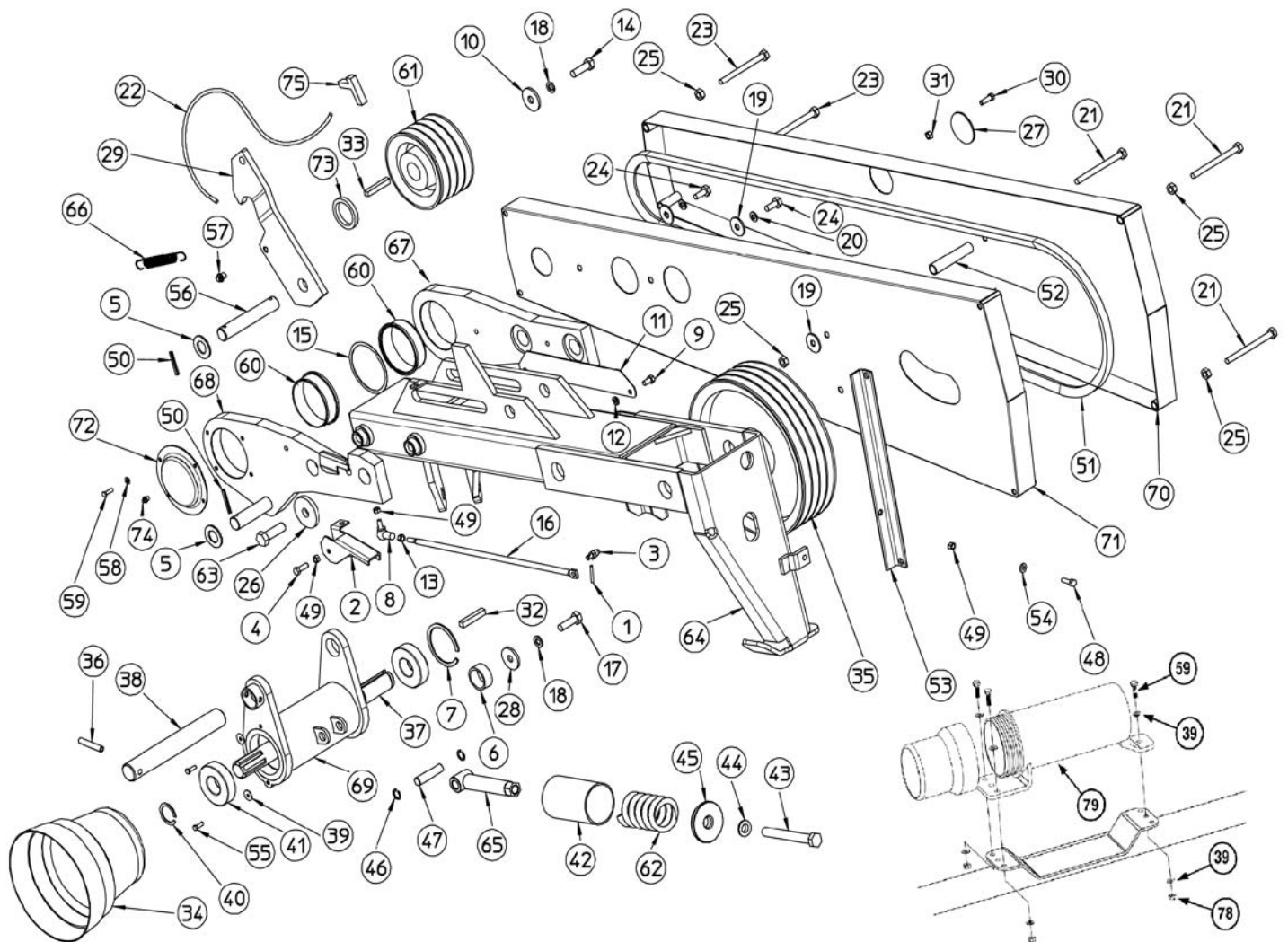
Drive Belts and Shielding	119-1-2 to 119-1-3
Mainframe Hitch and Related Parts	119-2-4 to 119-2-6
Frame and Canvas Parts	119-3-7 to 119-3-8
Cutter Bar and Gearbox	119-4-10 to 119-4-12
Driveshaft Assembly.....	119-5-5 to 119-5-6
Hydraulic Cylinder Assy	See Mainframe Hitch and Related Parts
Decals, Logo	119-7-1
Decals, Safety	119-7-2 to 119-7-3

DHM7 HAY MOWER DRIVE BELTS and SHIELDING



Ref. No.	Part No.	Description	Qty.	SPN
1	100.918	INTERNAL COVER	1	100.918
2	----	PULLEY	1	100.224
3	100.919	OUTER COVER	1	100.919
4	70618	SCREW M10 x 1.5 x 20 8.8 ZN	5	600.227
5	----	SPACER SCREW	1	200.475
6	----	SPACER SCREW	4	100.921
7	610.033	BELT	4	610.033
8	----	SCREW, M12 x 1.75 x 40 8.8 ZN	1	630.015
9	500.160	WASHER	1	500.160
10	100.225	PULLEY	1	100.225
11	----	SPACER SCREW	1	100.920
12	----	PLUG	1	100.313
13	600.092	WASHER Ø12 x 36 x 2.5	2	600.092
14	44154BH	NUT M10 X 1.5 ZN	4	600.029
15	----	BUSH	1	100.205
16	----	WASHER D.9	1	610.185
17	44299BH	SCREW M8 x 1.25 x 25 8.8 ZN	1	600.702
18	44185BH	NUT M8 x 1.25	1	600.076
20	----	SUPPORT	1	100.756
21	----	TAB	1	610.154
22	----	PTO SHAFT	1	100.761
23	600.333	SNAP RING	2	600.333
24	----	TAB	1	610.505
25	44200BH	WASHER Ø13 (M12)	1	600.018
27	----	SCREW M4 x .07 x 16	1	620.275
28	----	NUT, M4	1	610.718
30	15830	WASHER Ø10.5	7	600.322

DHM8, DHM9, DHM10 HAY MOWER DRIVE BELTS and SHIELDING

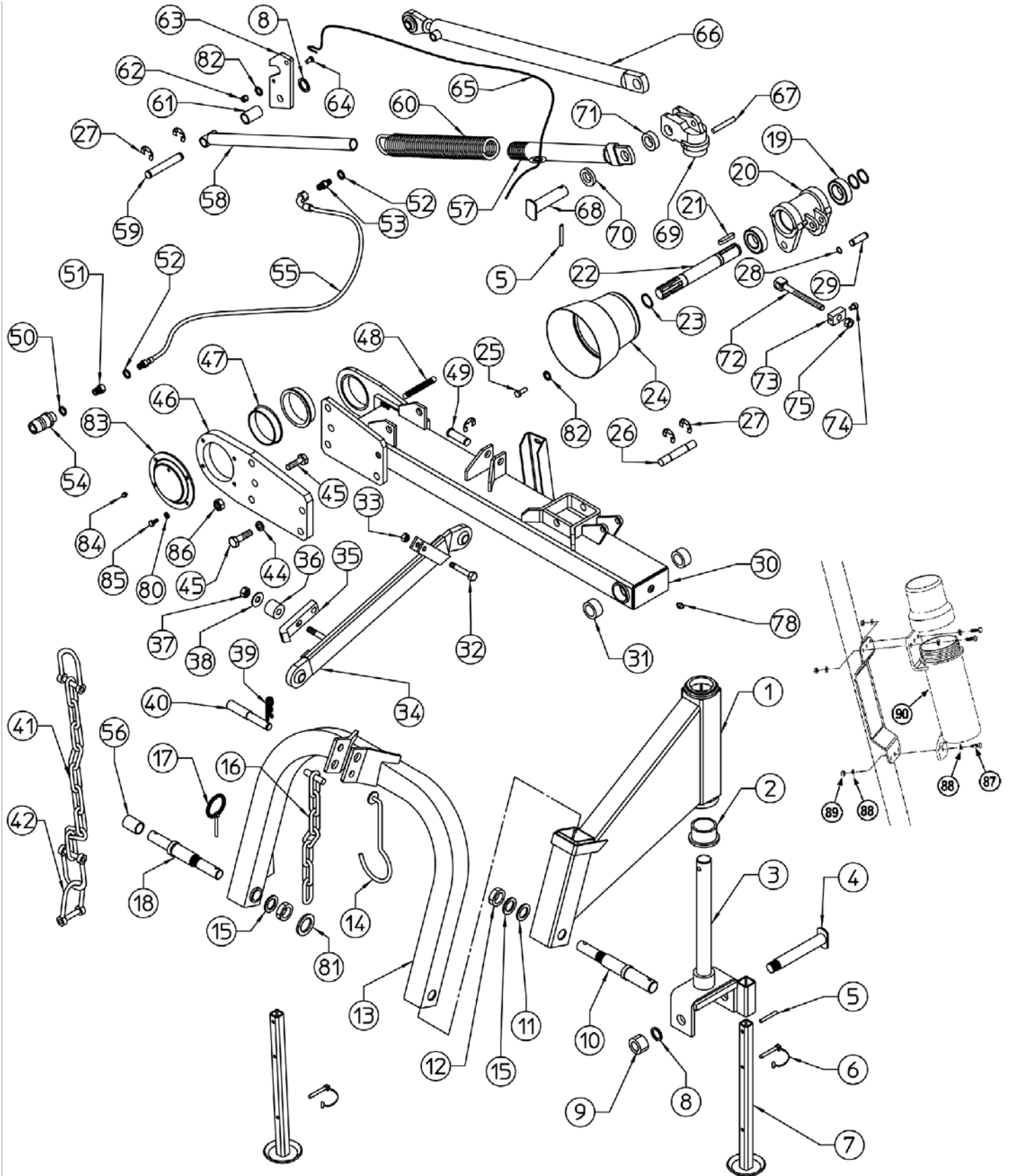


Ref. No.	Part No.	Description	Qty.	SPN
1	----	PLUG 3 x 30	1	600.306
2	110.429	LEVER	1	110.429
3	110.486	PIN	1	110.486
4	44184	SCREW, M8 x 1.25 x 45 8.8 ZN	1	600.551
5	----	WASHER	6	110.493
6	----	SPACER	1	110.482
7	----	SNAP RING	1	620.480
8	630.931	BALL JOINT M8	1	630.931
9	44316BH	SCREW, M8 x 1.25 x 16 8.8 ZN	2	600.061
10	----	WASHER	2	110.487
11	----	PROTECTION	1	110.476
12	44311BH	LOCKWASHER Ø8.4 (M8)	4	600.229
13	71251	NUT, M8 x 1.25 ZN	1	600.037
14	----	SCREW, M12 x 1.75 x 40 10.9	1	620.475
15	----	SHIM	2	100.352
16	110.477	TIE ROD	1	110.477
17	----	SCREW, M12 x 1.75 x 40 12.9	1	630.967
18	44200BH	SPRING WASHER Ø13 (M12)	5	600.018
19	----	WASHER Ø11(30 x 2.5)	4	620.250
20	----	WASHER Ø10.5	4	600.024

DHM8, DHM9, DHM10 HAY MOWER DRIVE BELTS and SHIELDING

Ref. No.	Part No.	Description	Qty.	SPN
21	----	SCREW, M10 x 1.5 x 120 8.8 ZN	4	600.206
22	----	ROPE	1	610.160
23	----	SCREW	2	110.021
24	44340BH	SCREW, M10 x 1.5 x 25 8.8 ZN	9	600.006
25	44154BH	NUT, M10 x 1.5 ZN	24	600.029
26	----	WASHER	4	110.423
27	----	PLUG	1	100.313
28	----	WASHER	2	110.487
29	----	HOOK	1	110.424
30	----	SCREW, M4 x 16	1	630.100
31	----	NUT, M4	1	610.718
32	----	TAB	1	630.969
33	----	TAB	1	610.505
34	----	PDF CAP	1	620.442
35	----	PULLEY	1	100.224
36	----	SPRING PIN Ø10 x 45	1	600.540
37	110.478	INPUT SHAFT	1	110.478
38	----	PIN	1	100.958
39	600.135	WASHER Ø6.6 x 18 x 1.6	8	600.135
40	600.333	SNAP RING	1	600.333
41	----	BEARING	2	620.248
42	----	SPACER	1	100.969
43	----	BELT TENSION SCREW	1	620.249
44	----	WASHER	1	100.970
45	----	TIGHTENER WASHER	1	100.968
46	600.533	RETAINING RING	2	600.533
47	----	PIN	1	100.758
48	44299BH	SCREW, M8 x 1.25 x 25 8.8 ZN	3	600.702
49	44185BH	NUT M8	6	600.076
50	----	SPRING PIN Ø6 x 40	2	640.007
51	620.251	BELT	4	620.251
52	----	SPACER	2	110.022
53	----	BELT COVER SUPPORT	1	110.016
54	----	WASHER Ø9 (24 x 2)	3	610.185
55	----	SCREW, M6 x 1 x 16 10.9 ZN	2	600.702
56	----	PIN	1	110.426
57	----	PIN	1	220.159
58	----	FLATWASHER Ø6.4	4	600.514
59	----	SCREW, M6 x 1 x 20 8.8 ZN	7	630.003
60	----	BUSH	2	610.232
61	100.225	PULLEY	1	100.225
62	----	PTO SPRING	1	100.967
63	----	SCREW, M16 x 2 x 50 10.9 ZN	4	610.510
64	----	FRAME	1	110.420
65	----	TIGHTENER ROD	1	100.965
66	----	SPRING	1	110.425
67	----	GEARBOX SUPPORT	1	110.421
68	----	GEARBOX SUPPORT	1	110.422
69	----	PTO SUPPORT	1	110.479
70	100.964	BELT REAR COVER	1	100.964
71	110.427	BELT FRONT COVER	1	110.427
72	----	COVER	1	110.488
73	----	SHIM	1	110.015
74	600.124	GREASE NIPPLE, M6	4	600.124
75	----	HANDLE	1	620.357
78	----	NUT, M6 DIN 980	3	600.472
79	50035829	CANISTER	1	230.457

DHM7 HAY MOWER MAINFRAME HITCH and RELATED PARTS



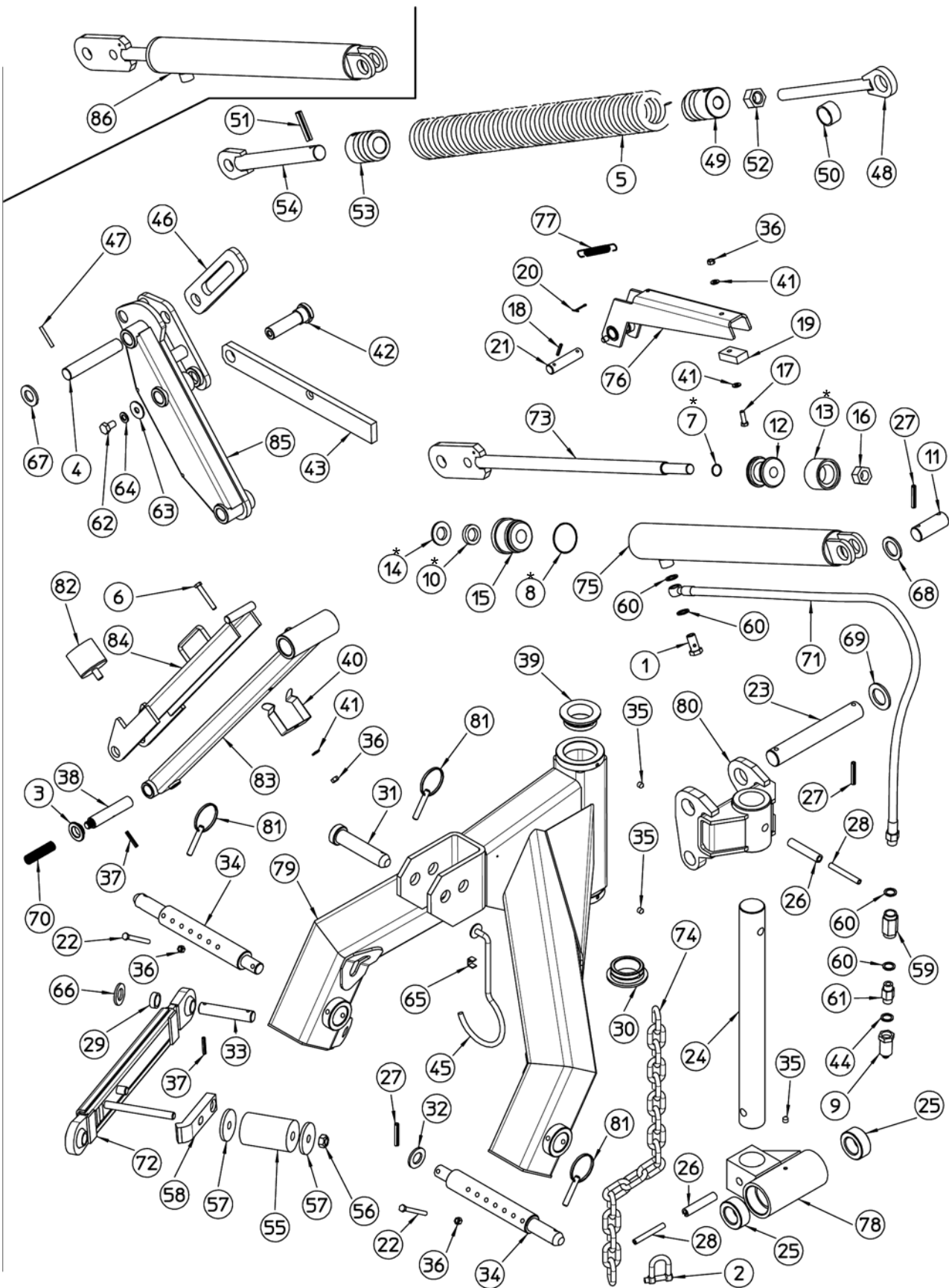
DHM7 HAY MOWER MAINFRAME HITCH and RELATED PARTS

Ref. No.	Part No.	Description	Qty.	SPN
1	----	SUPPORT	1	100.162
2	----	BUSH	1	100.236
3	----	PIN SUPPORT	1	100.163
4	----	PIN	1	100.164
5	20803	SPRING PIN	3	600.027
6	----	PIN	2	610.186
7	----	PARKING STAND	2	100.166
8	44125BH	WASHER Ø21 (M20)	2	600.632
9	71230	NUT, M20 x 2.5	1	600.717
10	100.175	PIN	1	100.175
11	600.336	WASHER Ø25 (M24)	1	600.336
12	----	NUT	2	610.150
13	----	3-POINT HITCH	1	100.161
14	----	SUPPORT	1	100.253
15	44101BH	WASHER Ø25	2	600.246
16	----	CHAIN	1	110.368
17	600.017	PIN	3	600.017
18	100.280	PIN	1	100.280
19	600.608	BEARING	2	600.608
20	----	SUPPORT	1	100.756
21	----	TAB	1	610.154
22	----	PTO SHAFT	1	100.761
23	600.333	SNAP RING	4	600.333
24	----	HOOD	1	620.442
25	600.650	SCREW, M8 x 1.25 x 12	2	600.650
26	----	PIN	1	100.757
27	----	SNAP RING	5	610.152
28	600.533	SNAP RING	2	600.533
29	----	PIN	1	100.758
30	----	MAIN FRAME	1	110.409
31	----	BUSH	2	100.198
32	600.754	SCREW, M12 x 1.75 x 55 8.8 ZN	1	600.754
33	44528	NUT, M12	1	600.077
34	110.466	SAFETY HOOK	1	110.466
35	100.168	HOOK	1	100.168
36	100.201	SPRING	1	100.201
37	44818BH	NUT, M14	1	600.075
38	----	WASHER Ø14 (40 x 4)	1	610.231
39	600.308	SPLIT PIN	1	600.308
40	----	PIN	1	200.343
41	----	CHAIN	1	110.367
42	----	SHACKLES	3	610.118
44	19486	WASHER Ø17	1	600.180
45	----	SCREW, M16 x 2 x 60 10.9 ZN	5	620.361
46	----	BOX SUPPORT	1	110.407
47	100.831	BUSH	2	100.831
48	100.235	SPRING	1	100.235
49	----	PIN	1	100.176
50	600.269	COPPER WASHER	1	600.269

DHM7 HAY MOWER MAINFRAME HITCH and RELATED PARTS

Ref. No.	Part No.	Description	Qty.	SPN
51	----	NIPPLE	1	600.428
52	600.039	COPPER WASHER	3	600.039
53	----	NIPPLE	1	200.192
54	600.273	QUICK COUPLING	1	600.273
55	----	HOSE	1	610.143
56	----	BUSH	1	400.045
57	100.170	OUTER TUBE	1	100.170
58	100.171	INNER TUBE	1	100.171
59	100.202	PIN	1	100.202
60	100.172	SPRING	1	100.172
61	----	BUSH	1	100.204
62	44185BH	NUT	1	600.076
63	----	HOOK	1	110.029
64	----	SCREW	1	110.053
65	----	ROPE	1	610.160
66	100.169	CYLINDER, 40 MM DIA. - COMPLETE	1	100.169
67	610.168	SPRING PIN	1	610.168
68	----	PIN	1	100.173
69	----	UPPER SUPPORT	1	100.165
70	----	BUSH	1	100.251
71	----	BUSH	1	100.252
72	----	TIE ROD	1	100.746
73	----	SUPPORT	1	100.745
74	----	SCREW, M10 x 1.5 x 16 8.8 ZN	2	610.941
75	----	SCREW, M16	2	600.032
78	600.124	GREASE NIPPLE	2	600.124
80	----	WASHER Ø6.4	4	600.514
81	----	WASHER	1	200.165
82	----	WASHER Ø9 (24 x 2)	3	610.185
83	----	COVER	1	110.411
84	600.034	GREASE NIPPLE	1	600.034
85	600.236	SCREW, M6 x 1 x 20	4	600.236
86	----	NUT, M16	4	630.407
87	----	SCREW, M6 x 1 x 20 8.8 ZN	3	630.003
88	600.135	WASHER Ø6.6 x 18 x 1.6	6	600.135
89	----	NUT, M6 DIN 980	3	600.472
90	50035829	CANISTER	1	230.457

DHM8, DHM9, DHM10 HAY MOWER MAINFRAME HITCH and RELATED PARTS



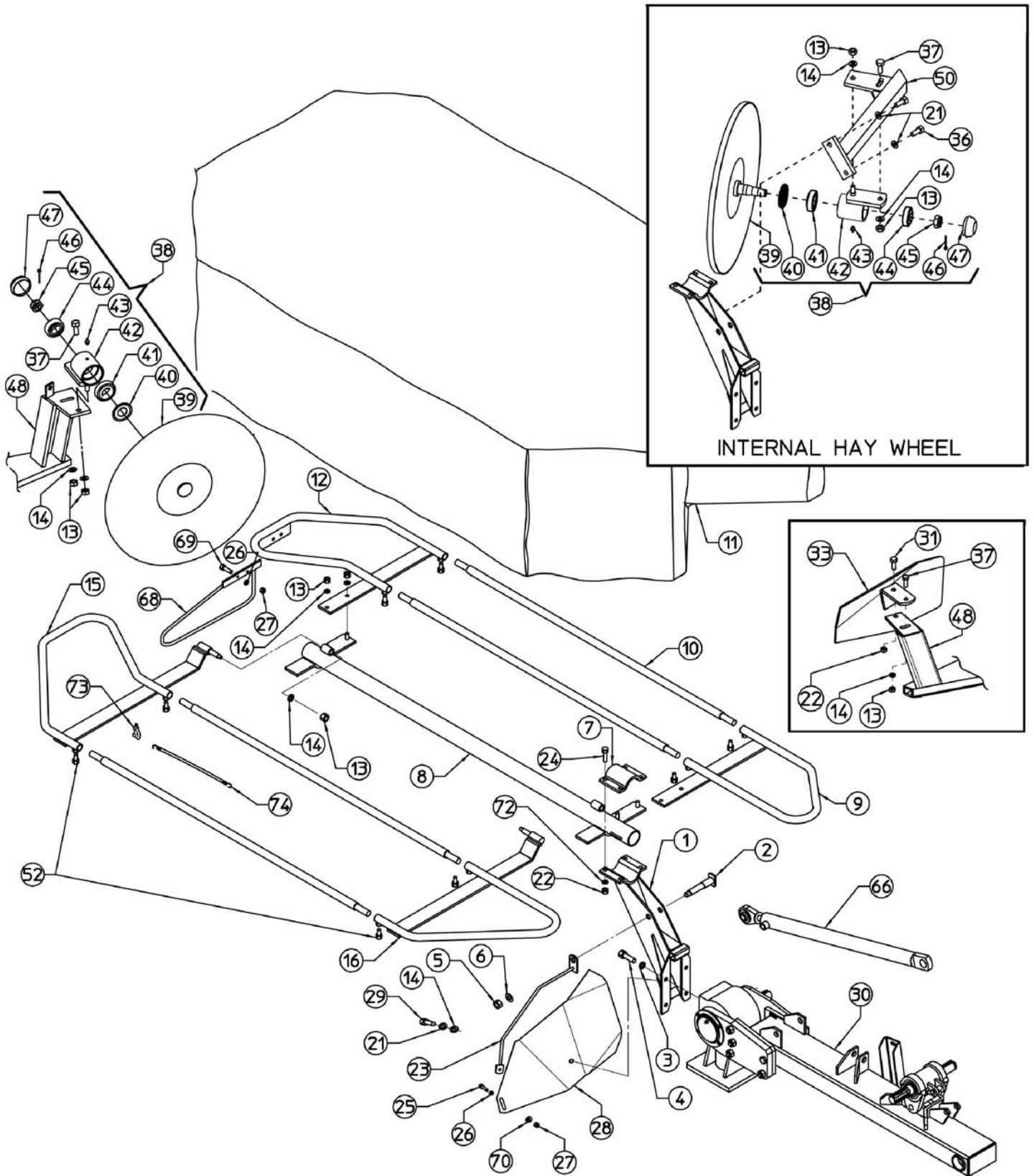
DHM8, DHM9, DHM10 HAY MOWER MAINFRAME HITCH and RELATED PARTS

Ref. No.	Part No.	Description	Qty.	SPN
1	600.040	FITTING D 3/8	1	600.040
2	----	SHACKLES	3	610.118
3	----	SPACER	2	110.475
4	110.459	PIN	1	110.459
5	----	SPRING PIN	1	100.979
6	----	SCREW, M8 x 1.25 x 55 8.8 ZN	1	630.005
7	----	*O-RING (Ø20.29)	-	----
8	----	*O-RING OR 832 (Ø52.39 x 3.53)	-	----
9	600.273	QUICK COUPLING	1	600.273
10	----	*GASKET B 137098	-	----
11	110.447	PIN	1	110.447
12	----	PISTON	1	110.495
13	----	*GASKET DBM 236173	-	----
14	----	*GASKET WRM 098129	-	----
15	----	CYLINDER HEAD	1	110.470
16	----	NUT, M20 x 1.5 ZN	1	631.383
17	44299BH	SCREW, M8 x 1.25 x 25 8.8 ZN	3	600.702
18	----	SPRING PIN Ø5 x 30	2	600.182
19	----	NYLON PROTECTION5 x 30	1	110.450
20	92517	SPLIT PIN Ø4 x 30	1	600.112
21	----	PIN	1	110.449
22	600.400	SCREW, M8 x 1.25 x 80 8.8 ZN	2	600.400
23	----	PIN	1	110.445
24	----	PIN	1	100.954
25	110.480	BUSHING	2	110.480
26	----	SPRING PIN Ø16 x 80	2	620.247
27	20803	SPRING PIN Ø8 x 50	7	600.027
28	66866	SPRING PIN Ø10 x 80	2	600.033
29	----	BUSHING	3	110.398
30	----	BUSHING	1	110.484
31	----	3 POINT HITCH PIN	1	110.011
32	600.336	WASHER Ø25	2	600.336
33	110.455	PIN	2	110.455
34	100.951	HITCH PIN	2	100.951
35	600.124	GREASE NIPPLE, M6	4	600.124
36	44185BH	NUT, M8	6	600.076
37	600.538	SPRING PIN Ø6 x 35	5	600.538
38	----	PIN	1	110.454
39	----	BUSHING	1	100.953
40	110.453	LOCKING SPRING	1	110.453
41	44216	WASHER Ø8.4	2	600.115
42	----	PIN	1	110.483
43	----	ROD	1	110.458
44	630.048	WASHER	1	630.048
45	----	SUPPORT	1	100.253

DHM8, DHM9, DHM10 HAY MOWER MAINFRAME HITCH and RELATED PARTS

Ref. No.	Part No.	Description	Qty.	SPN
46	----	ROD PLATE	1	110.457
47	600.539	SPRING PIN Ø6 x 45	7	600.539
48	----	SPRING SUPPORT	1	100.977
49	----	SPRING HEAD	1	100.978
50	----	SPACER	1	100.976
51	----	SPRING PIN Ø12 x 45	1	620.252
52	600.200	NUT, M22	1	600.200
53	----	SPRING HEAD	1	100.980
54	----	SPRING SUPPORT	1	100.981
55	110.009	RUBBER SPRING	1	110.009
56	44818BH	NUT, M14	1	600.075
57	----	WASHER	2	110.010
58	100.168	HOOK	1	100.168
59	610.144	VALVE	1	610.144
60	3678416	WASHER 3/8"	2	620.452
61	600.416	UNION CONN. 3/8-1/2	1	600.416
62	44204BH	SCREW, M12 x 1.75 x 25 8.8 ZN	5	600.441
63	----	WASHER, M12 x 36 x 4	1	600.845
64	44200BH	SPRING WASHER Ø13 (M12)	5	600.018
65	----	CLIP	1	200.992
66	600.042	WASHER Ø23	4	600.042
67	----	WASHER Ø.26	6	110.493
68	----	WASHER Ø.31 x 48 x 4	2	110.135
69	----	WASHER Ø.36 x 56 x 4	2	110.494
70	----	SPRING	1	110.485
71	----	HOSE	1	630.949
72	110.003	SAFETY ROD	1	110.003
73	----	CYLINDER ROD	1	110.469
74	----	CHAIN	1	110.367
75	----	CYLINDER BARREL	1	110.468
76	110.448	CYLINDER STOP	1	110.448
77	220.123	SPRING	1	220.123
78	----	PIVOTING SUPPORT	1	100.956
79	----	3 POINT HITCH	1	110.443
80	----	HEAD SUPPORT	1	110.444
81	600.017	PIN	3	600.017
82	----	RUBBER	1	630.968
83	----	TIE ROD	1	110.451
84	110.452	TIE ROD	1	110.452
85	----	LEVER	1	110.456
86	110.446	CYLINDER - COMPLETE	1	110.446
*	----	CYLINDER GASKET SET	1	630.950

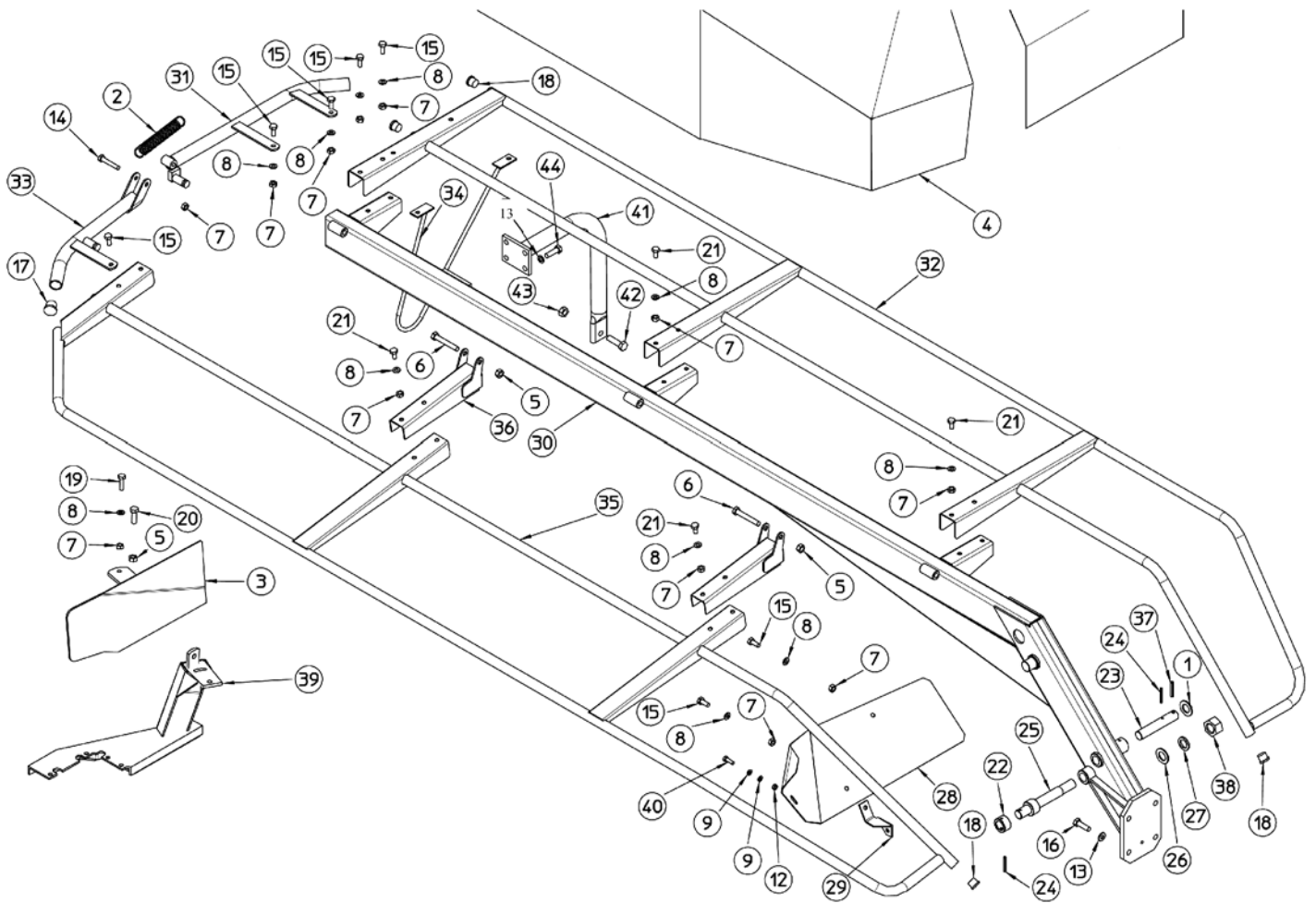
DHM7 HAY MOWER FRAME and CANVAS PARTS



DHM7 HAY MOWER FRAME and CANVAS PARTS

Ref. No.	Part No.	Description	Qty.	SPN
1	----	SUPPORT	1	100.190
2	----	PIN	1	100.174
3	44200BH	SPRING WASHER Ø13 (M12)	4	600.018
4	----	SCREW, M12 x 1.75 x 30 10.9 ZN	4	620.788
5	600.080	NUT, M16	1	600.080
6	44308	WASHER Ø17	1	600.031
7	----	OUTER SUPPORT	1	100.192
8	----	FRAME TUBE	1	100.937
9	----	FRAME	1	100.194
10	----	DISTANCE TUBE	4	100.256
11	110.592	PROTECTION CANVAS W/ DECALS – DHM7	1	110.592
12	----	FRAME	1	110.402
13	44154BH	NUT, M10 x 1.5 ZN	7	600.029
14	15830	WASHER, Ø10.5 (M10)	8	600.322
15	----	FRAME	1	100.195
16	----	FRAME	1	100.196
21	44198	SPRING WASHER Ø10.5 (M10)	1	600.024
22	44528	NUT, M12 x 1.75 ZN	5	600.077
23	----	ARM	1	100.328
24	600.754	SCREW, M12 x 1.75 x 55 8.8 ZN	4	600.754
25	45001BH	SCREW, M8 x 1.25 x 30 8.8 ZN	1	600.757
26	44216	WASHER Ø8.4 (M8)	3	600.115
27	44185BH	LOCKNUT, M8 x 1.25	3	600.076
28	100.188	PLATE DEFLECTOR	1	100.188
29	44202	SCREW, M10 x 1.5 x 30 8.8 ZN	1	600.148
31	44281BH	SCREW, M12 x 1.75 x 35 8.8 ZN	1	600.616
33	----	CONVEYOR	1	110.378
36	44340BH	SCREW, M10 x 1.5 x 25 8.8 ZN	2	600.006
37	44489BH	SCREW, M10 x 1.5 x 35 8.8 ZN	1	600.641
38	----	HAY WHEEL ASSY	1	100.763
39	----	HAY WHEEL	1	100.881
40	----	DUST COVER	1	600.011
41	----	BEARING 30205	1	600.012
42	----	HUB	1	100.569
43	600.124	GREASE NIPPLE	1	600.124
44	----	BEARING 30204	1	600.014
45	----	NUT, M18 x 1.5	1	600.015
46	20166	SPLIT PIN, 3 x 30	1	600.301
47	----	CUP	1	205.654
48	----	SUPPORT	1	110.392
50	----	SUPPORT	1	100.766
52	70618	SCREW, M10 x 1.5 x 20 8.8 ZN	8	600.227
66	100.169	CYLINDER, 40MM DIA. - COMPLETE	1	100.169
68	----	SUPPORT	1	110.401
69	44299BH	SCREW, M8 x 1.25 x 25 8.8 ZN	1	600.702
70	----	WASHER Ø9 /24 x 2	4	610.185
72	44269	WASHER Ø13 (M12)	4	600.089
73	----	“D” SHACKLE	2	600.761
74	----	ELASTIC	1	110.048

DHM8 HAY MOWER FRAME and CANVAS PARTS

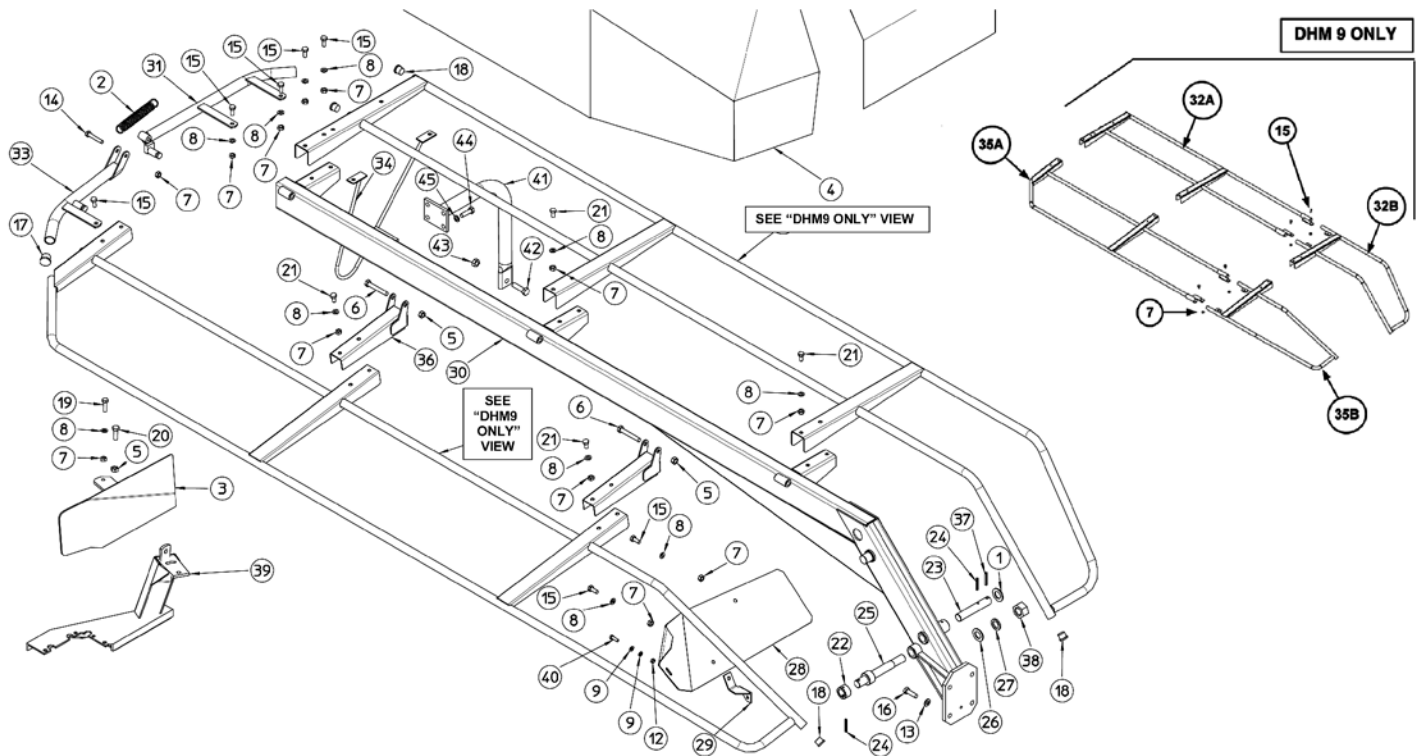


Ref. No.	Part No.	Description	Qty.	SPN
1	----	WASHER, 26 x 39 X 3	6	110.493
2	----	SPRING	1	200.279
3	110.465	HAY DEFLECTOR	1	110.465
4	110.593	COVER CANVAS W/ DECALS – DHM8	1	110.593
5	44528	NUT M12 x 1.75 ZN	4	600.077
6	----	SCREW, M12 x 1.75 x 75 x 8.8 ZN	3	600.826
7	44154BH	LOCKNUT M10 x 1.5 ZN	24	600.029
8	15830	WASHER M10.5	19	600.322
9	----	WASHER, M9 24 x 2	3	610.185
12	44185BH	NUT M8 ZN	6	600.076
13	44200BH	SPRING WASHER Ø13 (M12)	10	600.018
14	----	SCREW, M10 x 1.5 x 60 8.8 ZN	1	610.500
15	44340BH	SCREW, M10 x 1.5 x 25 8.8 ZN	9	600.006

DHM8 HAY MOWER FRAME and CANVAS PARTS

Ref. No.	Part No.	Description	Qty.	SPN
16	----	SCREW, M12 x 1.75 x 35 10.9 ZN	4	630.839
17	----	PLUG	2	200.309
18	----	PLUG	8	600.854
19	44489BH	SCREW, M10 x 1.5 x 35 8.8 ZN	1	600.641
20	44281BH	SCREW, M12 x 1.75 x 35 8.8 ZN	1	600.616
21	70618	SCREW, M10 x 1.5 x 20 GALV.	10	600.227
22	----	BUSH	1	110.432
23	----	PIN	1	110.433
24	600.539	SPRING PIN M6 x 45	7	600.539
25	----	PIN	1	110.140
26	600.336	WASHER Ø25 (M24)	2	600.336
27	44101BH	WASHER Ø25 (M24)	1	600.246
28	110.491	HAY DEFLECTOR	1	110.491
29	----	PLATE DEFLECTOR SUPPORT	1	110.013
30	----	FRAME	1	110.431
31	----	PROTECTION	1	100.991
32	----	PROTECTION	1	110.438
33	----	PROTECTION	1	100.990
34	----	EXTERNAL PROTECTION	1	110.440
35	----	PIVOTING PROTECTION	1	110.435
36	----	PROTECTION PIVOTING	3	100.987
37	20803	SPRING PIN Ø8 x 50	7	600.027
38	----	NUT, M24 ZN	1	620.319
39	----	EXTERNAL SUPPORT	1	110.127
40	44299BH	SCREW, M8 x 1.25 x 25 8.8 ZN	3	600.702
41	----	SUPPORT	1	100.985
42	----	SCREW, M14 x 2 x 45 10.9 ZN	1	640.023
43	600.009	NUT, M14 x 2 ZN	2	600.009
44	44204BH	SCREW, M12 x 1.75 x 25 8.8 ZN	5	600.441
46	44269	WASHER Ø13 (M12) ZN	4	600.089

DHM9 HAY MOWER FRAME and CANVAS PARTS

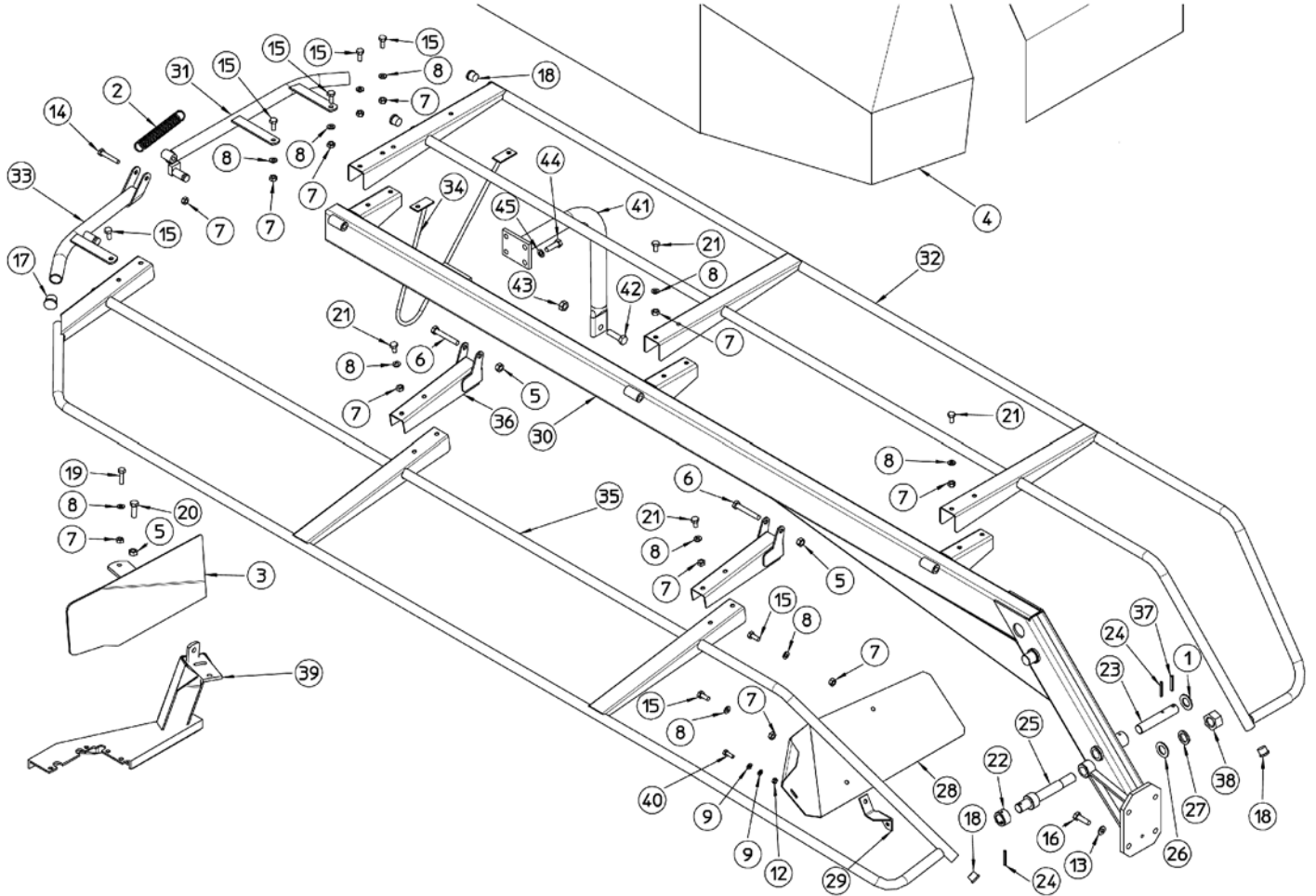


Ref. No.	Part No.	Description	Qty.	SPN
1	----	WASHER, 26 x 39 X 3	6	110.493
2	----	SPRING	1	200.279
3	110.465	HAY DEFLECTOR	1	110.465
4	110.594	COVER CANVAS W/ DECALS – DHM9	1	110.594
5	44528	NUT M12 x 1.75 ZN	4	600.077
6	----	SCREW, M12 x 1.75 x 75 x 8.8 ZN	3	600.826
7	44154BH	LOCKNUT M10 x 1.5 ZN	24	600.029
8	15830	WASHER M10.5	19	600.322
9	----	WASHER, M9 24 x 2	3	610.185
12	44185BH	NUT M8 ZN	6	600.076
13	44233BH	SPRING WASHER Ø15 (M14)	10	600.086
14	----	SCREW, M10 x 1.5 x 60 8.8 ZN	1	610.500
15	44340BH	SCREW, M10 x 1.5 x 25 8.8 ZN	9	600.006

DHM9 HAY MOWER FRAME and CANVAS PARTS

Ref. No.	Part No.	Description	Qty.	SPN
16	----	SCREW, M14 x 2 x 35 10.9 ZN	4	620.322
17	----	PLUG	2	200.309
18	----	PLUG	8	600.854
19	44489BH	SCREW, M10 x 1.5 x 35 8.8 ZN	1	600.641
20	44281BH	SCREW, M12 x 1.75 x 35 8.8 ZN	1	600.616
21	70618	SCREW, M10 x 1.5 x 20 GALV.	10	600.227
22	----	BUSH	1	110.432
23	----	PIN	1	110.433
24	600.539	SPRING PIN M6 x 45	7	600.539
25	----	PIN	1	110.140
26	600.336	WASHER Ø25 (M24)	2	600.336
27	44101BH	WASHER Ø25 (M24)	1	600.246
28	110.491	HAY DEFLECTOR	1	110.491
29	----	PLATE DEFLECTOR SUPPORT	1	110.013
30	----	FRAME	1	110.430
31	----	PROTECTION	1	100.991
32A	----	PROTECTION RH	1	120.002
32B	----	PROTECTION LH	1	120.004
33	----	PROTECTION	1	100.990
34	----	EXTERNAL PROTECTION	1	110.440
35A	----	PIVOTING PROTECTION PART RH	1	110.997
35B	----	PIVOTING PROTECTION PART LH	1	110.999
36	----	PROTECTION PIVOTING	3	100.987
37	20803	SPRING PIN Ø8 x 50	7	600.027
38	----	NUT, M24 ZN	1	620.319
39	----	EXTERNAL SUPPORT	1	110.127
40	44299BH	SCREW, M8 x 1.25 x 25 8.8 ZN	3	600.702
41	----	SUPPORT	1	100.985
42	----	SCREW, M14 x 2 x 45 10.9 ZN	1	640.023
43	600.009	NUT, M14 x 2 ZN	2	600.009
44	44204BH	SCREW, M12 x 1.75 x 25 8.8 ZN	5	600.441
45	44200BH	WASHER Ø13 (M12)	5	600.018
46	600.188	WASHER Ø15 (M14) ZN	4	600.188

DHM10 HAY MOWER FRAME and CANVAS PARTS

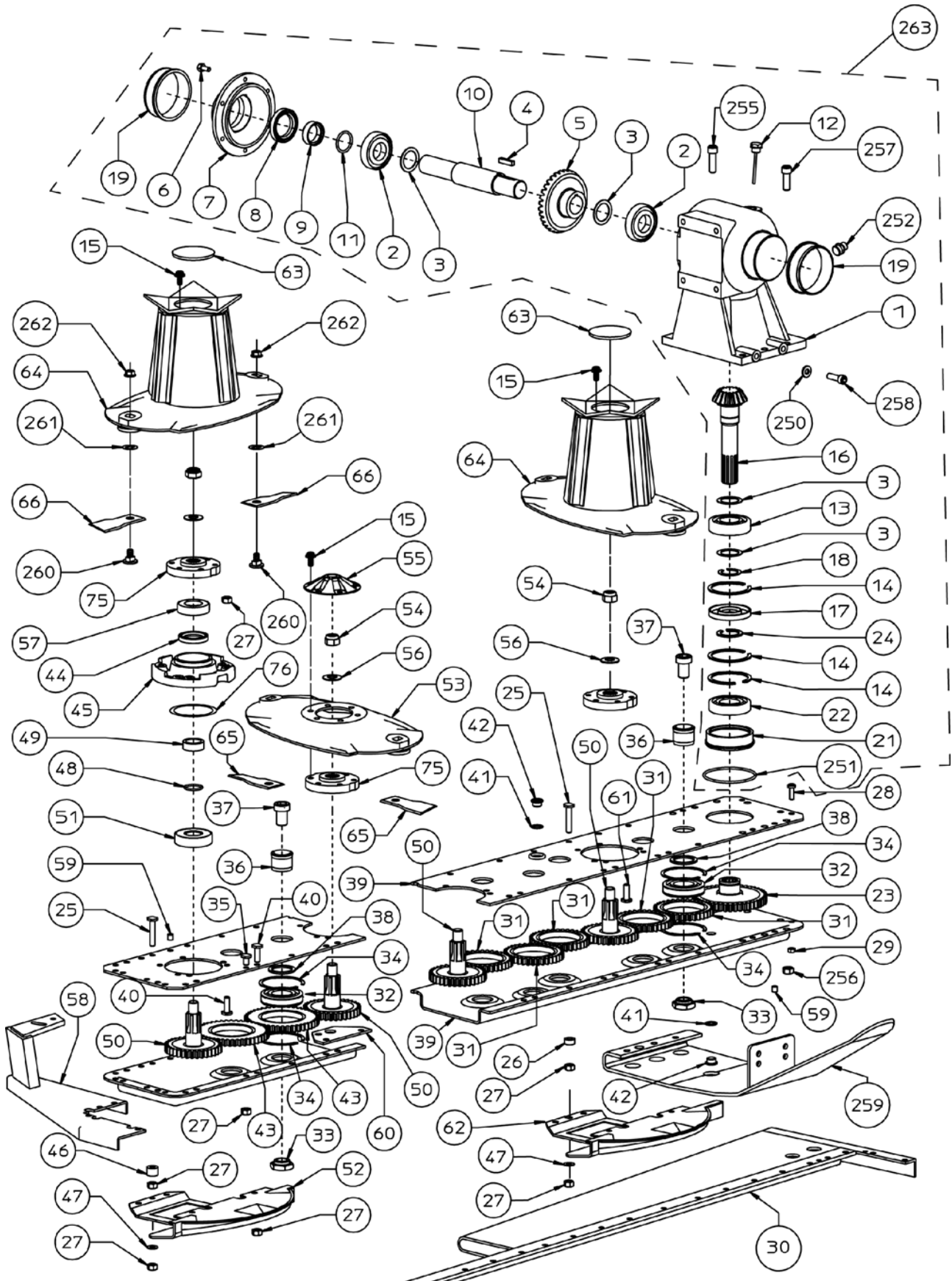


Ref. No.	Part No.	Description	Qty.	SPN
1	----	WASHER, 26 x 39 X 3	6	110.493
2	----	SPRING	1	200.279
3	110.465	HAY DEFLECTOR	1	110.465
4	110.595	COVER CANVAS W/ DECALS - DHM10	1	110.595
5	44528	NUT M12 x 1.75 ZN	4	600.077
6	----	SCREW, M12 x 1.75 x 75 x 8.8 ZN	3	600.826
7	44154BH	LOCKNUT M10 x 1.5 ZN	24	600.029
8	15830	WASHER M10.5	19	600.322
9	----	WASHER, M9 24 x 2	3	610.185
12	44185BH	NUT M8 ZN	6	600.076
13	44233BH	SPRING WASHER Ø15 (M14)	10	600.086
14	----	SCREW, M10 x 1.5 x 60 8.8 ZN	1	610.500
15	44340BH	SCREW, M10 x 1.5 x 25 8.8 ZN	9	600.006

DHM10 HAY MOWER FRAME and CANVAS PARTS

Ref. No.	Part No.	Description	Qty.	SPN
16	----	SCREW, M14 x 2 x 35 10.9 ZN	4	620.322
17	----	PLUG	2	200.309
18	----	PLUG	8	600.854
19	44489BH	SCREW, M10 x 1.5 x 35 8.8 ZN	1	600.641
20	44281BH	SCREW, M12 x 1.75 x 35 8.8 ZN	1	600.616
21	70618	SCREW, M10 x 1.5 x 20 GALV.	10	600.227
22	----	BUSH	1	110.432
23	----	PIN	1	110.433
24	600.539	SPRING PIN M6 x 45	7	600.539
25	----	PIN	1	110.140
26	600.336	WASHER Ø25 (M24)	2	600.336
27	44101BH	WASHER Ø25 (M24)	1	600.246
28	110.491	HAY DEFLECTOR	1	110.491
29	----	PLATE DEFLECTOR SUPPORT	1	110.013
30	----	FRAME	1	110.497
31	----	PROTECTION	1	100.991
32	----	PROTECTION	1	100.989
33	----	PROTECTION	1	100.990
34	----	EXTERNAL PROTECTION	1	110.440
35	----	PIVOTING PROTECTION	1	100.988
36	----	PROTECTION PIVOTING	3	100.987
37	20803	SPRING PIN Ø8 x 50	7	600.027
38	----	NUT, M24 ZN	1	620.319
39	----	EXTERNAL SUPPORT	1	110.127
40	44299BH	SCREW, M8 x 1.25 x 25 8.8 ZN	3	600.702
41	----	SUPPORT	1	100.985
42	----	SCREW, M14 x 2 x 45 10.9 ZN	1	640.023
43	600.009	NUT, M14 x 2 ZN	2	600.009
44	44204BH	SCREW, M12 x 1.75 x 25 8.8 ZN	5	600.441
45	44200BH	WASHER Ø13 (M12)	5	600.018
46	600.188	WASHER Ø15 (M14) ZN	4	600.188

DHM7 HAY MOWER CUTTERBAR and GEARBOX



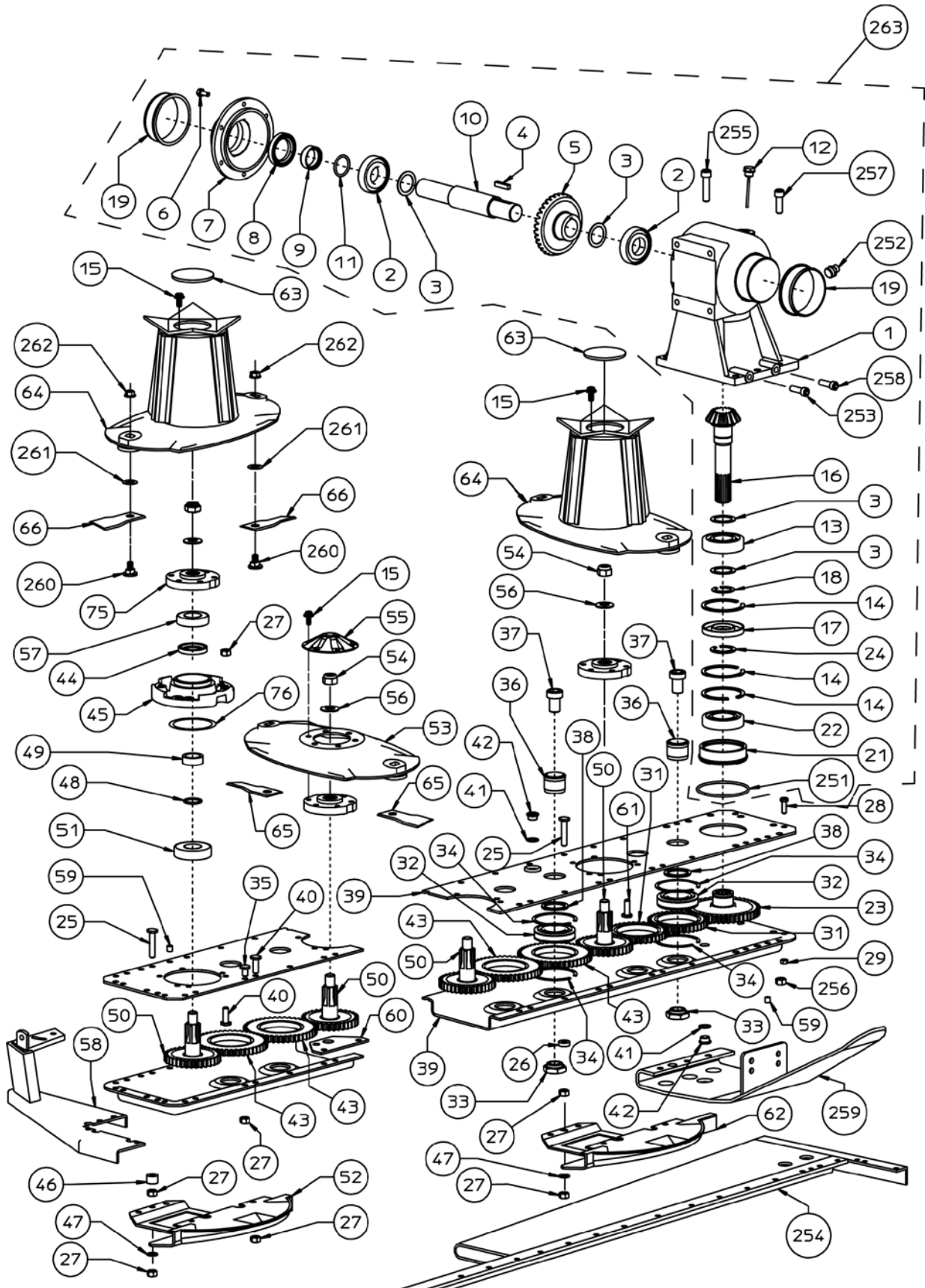
DHM7 HAY MOWER CUTTER BAR and GEARBOX

Ref. No.	Part No.	Description	Qty.	SPN
1	----	GEARBOX CASING	1	100.882
2	----	BEARING	2	620.129
3	----	WASHER	4	100.883
4	----	TAB	1	620.141
5	71211	BEVEL GEAR	1	100.772
6	----	SCREW	8	620.130
7	----	COVER	1	100.770
8	71215	OIL SEAL	1	620.156
9	----	BUSH	1	100.884
10	----	DRIVE SHAFT	1	100.771
11	70081	RING OR	1	620.171
12	----	PLUG	1	100.774
13	70082	BEARING	1	620.172
14	----	SNAP RING	3	620.148
15	----	SCREW	30	620.244
16	71220	SPROCKET	1	100.773
17	70180	SEAL	1	620.161
18	----	RING	1	620.145
19	100.831	BUSH	2	100.831
21	----	BEARING BUSH	1	100.885
22	71280	BEARING	1	620.173
23	----	GEAR	1	100.779
24	----	SNAP RING	1	620.146
25	100.783	SCREW	5	100.783
26	100.792	DISTANCE	3	100.792
27	----	NUT	86	620.136
28	----	SCREW	4	620.131
29	----	NUT	4	620.174
30	----	REAR REINFORCEMENT	1	110.397
31	71269	GEAR	5	100.801
32	71236	BEARING	11	620.126
33	----	NUT	11	100.798
34	----	SNAP RING	11	100.804
35	71231	SCREW	21	100.787
36	----	DISTANCE PIN	11	100.797
37	71234	SCREW	11	100.786
38	----	DISTANCE	11	100.785
39	----	SUPPORT (UPPER & LOWER)	1	100.888
0	71228	SCREW	49	100.782
41	----	WASHER	3	620.175
42	71249	PLUG	3	100.789
43	71270	GEAR	6	100.802
44	70781	SEAL	5	620.159
45	----	DISC SUPPORT	5	110.418
46	100.793	DISTANCE	2	100.793
47	100.795	WASHER, BELLEVILLE SPRING	5	100.795
48	71240	RING OR	5	620.165
49	----	BUSH	5	100.803
50	71243	GEAR	5	100.800
51	620.176	BEARING	5	620.176
52	100.995	SLIDING SUPPORT	3	100.995
53	110.463	CUTTING DISC	3	110.463
54	71244	NUT	5	620.139
55	100.996	DISC COVER	3	100.996

DHM7 HAY MOWER CUTTER BAR and GEARBOX

Ref. No.	Part No.	Description	Qty.	SPN
56	-----	WASHER	5	620.150
57	620.128	BEARING	5	620.128
58	-----	SUPPORT DEFLECTOR	1	110.392
59	-----	SPRING PIN	2	620.143
60	-----	HOOK	1	100.890
61	71223	SCREW	6	100.790
62	110.001	SLIDING SUPPORT	2	110.001
63	100.791	PLUG	2	100.791
64	110.464	DISC CONVEY	2	110.464
65	110.118	CLOCKWISE KNIFE	4	110.118
66	110.119	COUNTER CLOCKWISE KNIFE	6	110.119
75	100.993	DISC SUPPORT	5	100.993
76	-----	RING OR	5	630.576
250	15830	WASHER	4	600.322
251	71221	RING OR	1	620.164
252	620.152	VENT PLUG, 3/8" GAS	1	620.152
255	-----	SCREW	3	620.243
256	-----	NUT	8	620.137
257	-----	SCREW	5	620.133
258	70618	SCREW	2	600.227
259	-----	SUPPORT	1	110.381
260	100.796	SCREW	10	100.796
261	100.821	WASHER	10	100.821
262	100.794	NUT	10	100.794
263	110.038	GEARBOX ASSY, CUTTER BAR	1	110.038

DHM8 HAY MOWER CUTTERBAR and GEARBOX



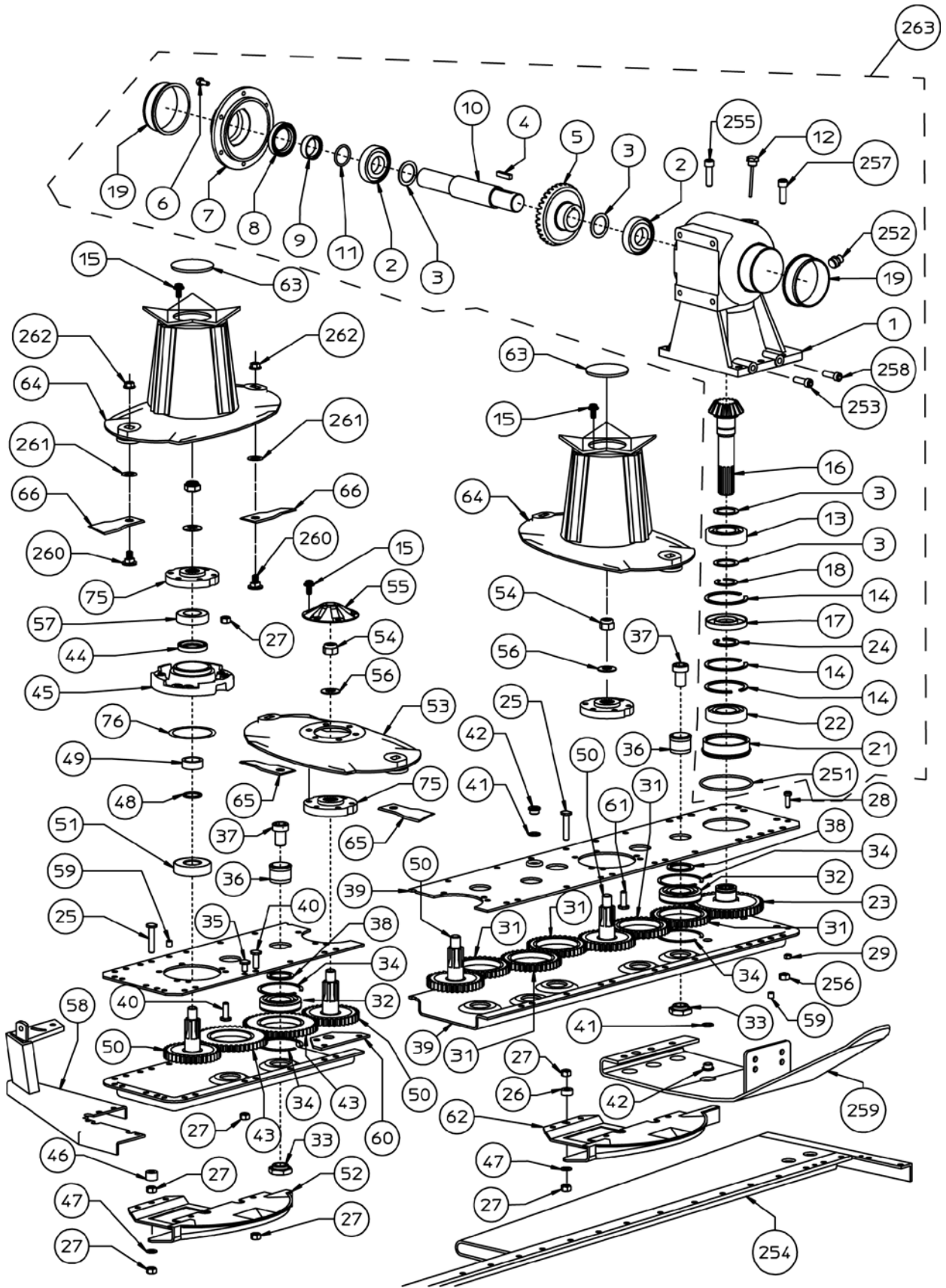
DHM8 HAY MOWER CUTTER BAR and GEARBOX

Ref. No.	Part No.	Description	Qty.	SPN
1	----	GEARBOX CASING	1	100.882
2	----	BEARING	2	620.129
3	----	WASHER	4	100.883
4	----	TAB	1	620.141
5	71211	BEVEL GEAR	1	100.772
6	----	SCREW, M10 x 1.5 x 22 8.8 ZN	8	620.130
7	----	COVER	1	100.770
8	71215	OIL SEAL	1	620.156
9	----	BUSH	1	100.884
10	----	DRIVE SHAFT	1	100.771
11	70081	RING OR	1	620.171
12	----	PLUG	1	100.774
13	70082	BEARING	1	620.172
14	----	SNAP RING	3	620.148
15	----	SCREW, M10 x 20	36	620.244
16	71220	SPROCKET	1	100.773
17	70180	SEAL	1	620.161
18	----	RING	1	620.145
19	----	BUSH	2	610.232
21	----	BEARING BUSH	1	100.885
22	71280	BEARING	1	620.173
23	----	GEAR	1	100.779
24	----	SNAP RING	1	620.146
25	100.783	SCREW	6	100.783
26	100.792	DISTANCE	4	100.792
27	----	NUT M10	102	620.136
28	----	SCREW, M8 x 25 8.8	4	620.131
29	----	NUT M8	4	620.174
31	71269	GEAR	2	100.801
32	71236	BEARING	12	620.126
33	----	NUT	12	100.798
34	----	SNAP RING	24	100.804
35	71231	SCREW	24	100.787
36	----	DISTANCE PIN	12	100.797
37	71234	SCREW	12	100.786
38	----	DISTANCE	12	100.785
39	----	SUPPORT (UPPER & LOWER)	1	100.887
40	71228	SCREW	62	100.782
41	----	WASHER	3	620.175
42	71249	PLUG	3	100.789
43	71270	GEAR	10	100.802
44	70781	SEAL	6	620.159
45	----	DISC SUPPORT	6	100.799
46	100.793	DISTANCE	2	100.793
47	100.795	WASHER, BELLEVILLE SPRING	6	100.795
48	71240	RING OR	6	620.165
49	----	BUSH	6	100.803
50	71243	GEAR	6	100.800
51	620.176	BEARING	6	620.176
52	100.995	SLIDING SUPPORT	5	100.995
53	110.463	CUTTING DISC	4	110.463
54	71244	NUT, M20 x 1.5	6	620.139
55	100.996	DISC COVER	4	100.996

DHM8 HAY MOWER CUTTER BAR and GEARBOX

Ref. No.	Part No.	Description	Qty.	SPN
56	----	WASHER	6	620.150
57	620.128	BEARING	6	620.128
58	----	SUPPORT DEFLECTOR	1	110.127
59	----	SPRING PIN	2	620.143
60	----	HOOK	1	100.890
61	71223	SCREW	4	100.790
62	110.001	SLIDING SUPPORT	1	110.001
63	100.791	PLUG	2	100.791
64	110.464	DISC CONVEY	2	110.464
65	100.367	CLOCKWISE KNIFE	6	100.367
66	100.366	COUNTER CLOCKWISE KNIFE	6	100.366
75	100.993	DISC SUPPORT	6	100.993
251	71221	RING OR	1	620.164
252	620.152	VENT PLUG, 3/8" GAS	1	620.152
253	----	SCREW, M10 x 1.5 x 25 12.9	1	620.245
254	----	REAR REINFORCEMENT	1	110.380
255	----	SCREW, HSHCS M12 x 1.75 x 50 12.9	3	620.243
256	----	NUT, M12 x 1.75	8	620.137
257	----	SCREW, HSHCS M12 x 1.75 x 40 12.9	5	620.133
258	----	SCREW, HSHCS M10 x 1.5 x 22 12.9	1	620.134
259	100.986	SLIDING SUPPORT	1	110.986
260	100.796	SCREW	12	100.796
261	100.821	WASHER	12	100.821
262	100.794	NUT	12	100.794
263	110.038	GEARBOX ASSY, CUTTER BAR	1	110.038

DHM9 HAY MOWER CUTTERBAR and GEARBOX



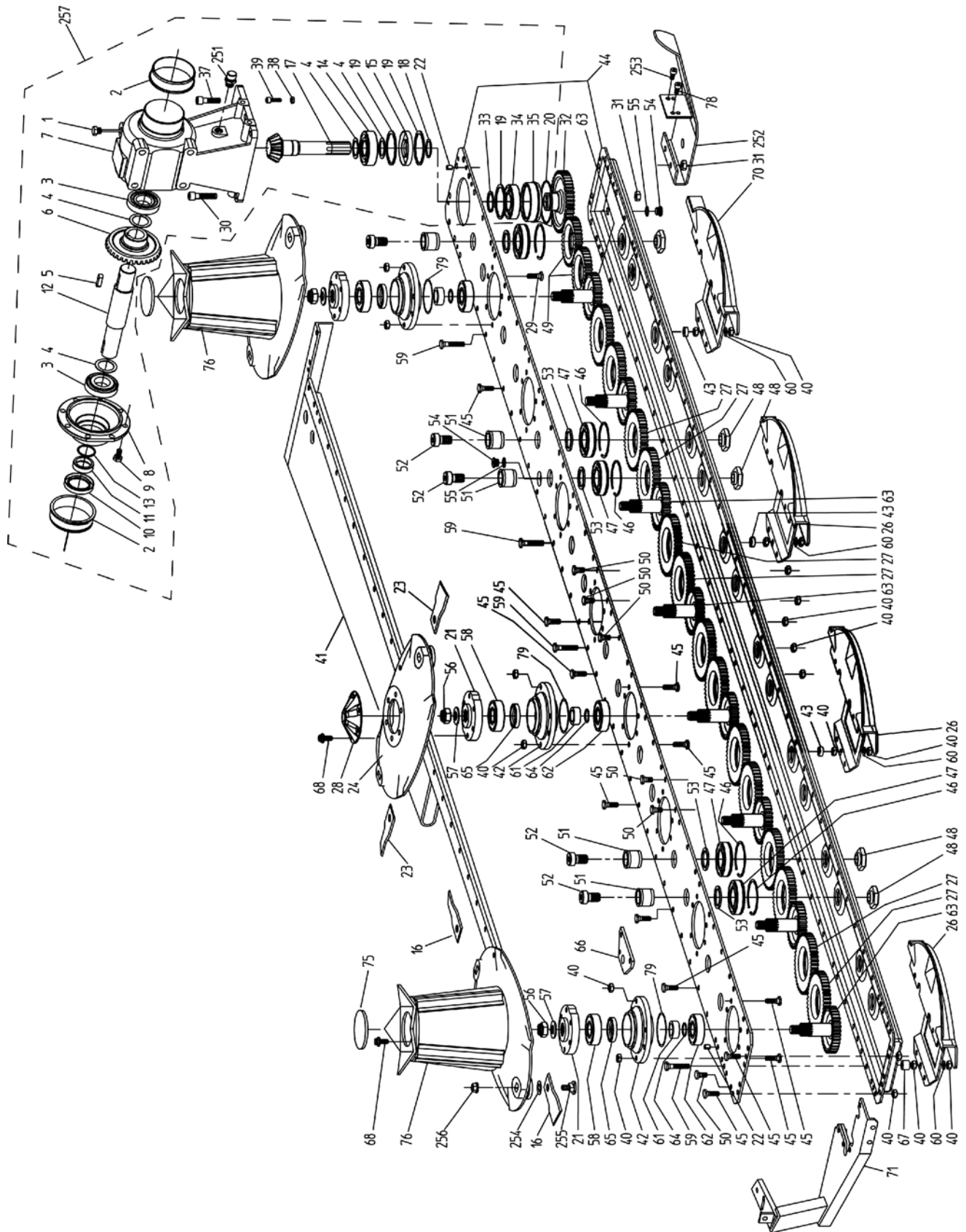
DHM9 HAY MOWER CUTTER BAR and GEARBOX

Ref. No.	Part No.	Description	Qty.	SPN
1	----	GEARBOX CASING	1	100.992
2	----	BEARING	2	620.129
3	----	WASHER	4	100.883
4	----	TAB	1	620.141
5	71211	BEVEL GEAR	1	100.772
6	----	SCREW, M10 x 1.5 x 22 8.8 ZN	8	620.130
7	----	COVER	1	100.770
8	71215	OIL SEAL	1	620.156
9	----	BUSH	1	100.884
10	----	DRIVE SHAFT	1	100.771
11	70081	RING OR	1	620.171
12	----	PLUG	1	100.774
13	70082	BEARING	1	620.172
14	----	SNAP RING	3	620.148
15	----	SCREW, M10 x 20	42	620.244
16	71220	SPROCKET	1	100.773
17	70180	SEAL	1	620.161
18	----	RING	1	620.145
19	BUSH	2	610.232
21	----	BEARING BUSH	1	100.885
22	71280	BEARING	1	620.173
23	----	GEAR	1	100.779
24	----	SNAP RING	1	620.146
25	100.783	SCREW	7	100.783
26	100.792	DISTANCE	4	100.792
27	----	NUT M10	118	620.136
28	----	SCREW, M8 x 25 8.8	4	620.131
29	----	NUT M8	4	620.174
31	71269	GEAR	5	100.801
32	71236	BEARING	15	620.126
33	----	NUT	15	100.798
34	----	SNAP RING	30	100.804
35	71231	SCREW	31	100.787
36	----	DISTANCE PIN	15	100.797
37	71234	SCREW	15	100.786
38	----	DISTANCE	15	100.785
39	----	SUPPORT (UPPER & LOWER)	1	100.887
40	71228	SCREW	71	100.782
41	----	WASHER	3	620.175
42	71249	PLUG	3	100.789
43	71270	GEAR	10	100.802
44	70781	SEAL	7	620.159
45	----	DISC SUPPORT	7	100.799
46	100.793	DISTANCE	6	100.793
47	100.795	WASHER, BELLEVILLE SPRING	7	100.795
48	71240	RING OR	7	620.165
49	----	BUSH	7	100.803
50	71243	GEAR	7	100.800
51	620.176	BEARING	7	620.176
52	100.995	SLIDING SUPPORT	5	100.995
53	110.463	CUTTING DISC	5	110.463
54	71244	NUT, M20 x 1.5	7	620.139
55	100.996	DISC COVER	5	100.996

DHM9 HAY MOWER CUTTER BAR and GEARBOX

Ref. No.	Part No.	Description	Qty.	SPN
56	----	WASHER	7	620.150
57	620.128	BEARING	7	620.128
58	----	SUPPORT DEFLECTOR	1	110.127
59	----	SPRING PIN	2	620.143
60	----	HOOK	1	100.890
61	71223	SCREW	7	100.790
62	110.001	SLIDING SUPPORT	2	110.001
63	100.791	PLUG	2	100.791
64	110.464	DISC CONVEY	2	110.464
65	100.367	CLOCKWISE KNIFE	8	100.367
66	100.366	COUNTER CLOCKWISE KNIFE	6	100.366
75	100.993	DISC SUPPORT	7	100.993
251	71221	RING OR	1	620.164
252	620.152	VENT PLUG, 3/8" GAS	1	620.152
253	----	SCREW, M10 x 1.5 x 25 12.9	1	620.245
254	----	REAR REINFORCEMENT	1	110.380
255	----	SCREW, HSHCS M12 x 1.75 x 50 12.9	3	620.243
256	----	NUT, M12 x 1.75	8	620.137
257	----	SCREW, HSHCS M12 x 1.75 x 40 12.9	5	620.133
258	70618	SCREW, HSHCS M10 x 1.5 x 22 12.9	2	620.134
259	100.986	SLIDING SUPPORT	1	110.986
260	100.796	SCREW	14	100.796
261	100.821	WASHER	14	100.821
262	100.794	NUT	14	100.794
263	110.509	GEARBOX ASSY, CUTTER BAR	1	110.509

DHM10 HAY MOWER CUTTERBAR and GEARBOX



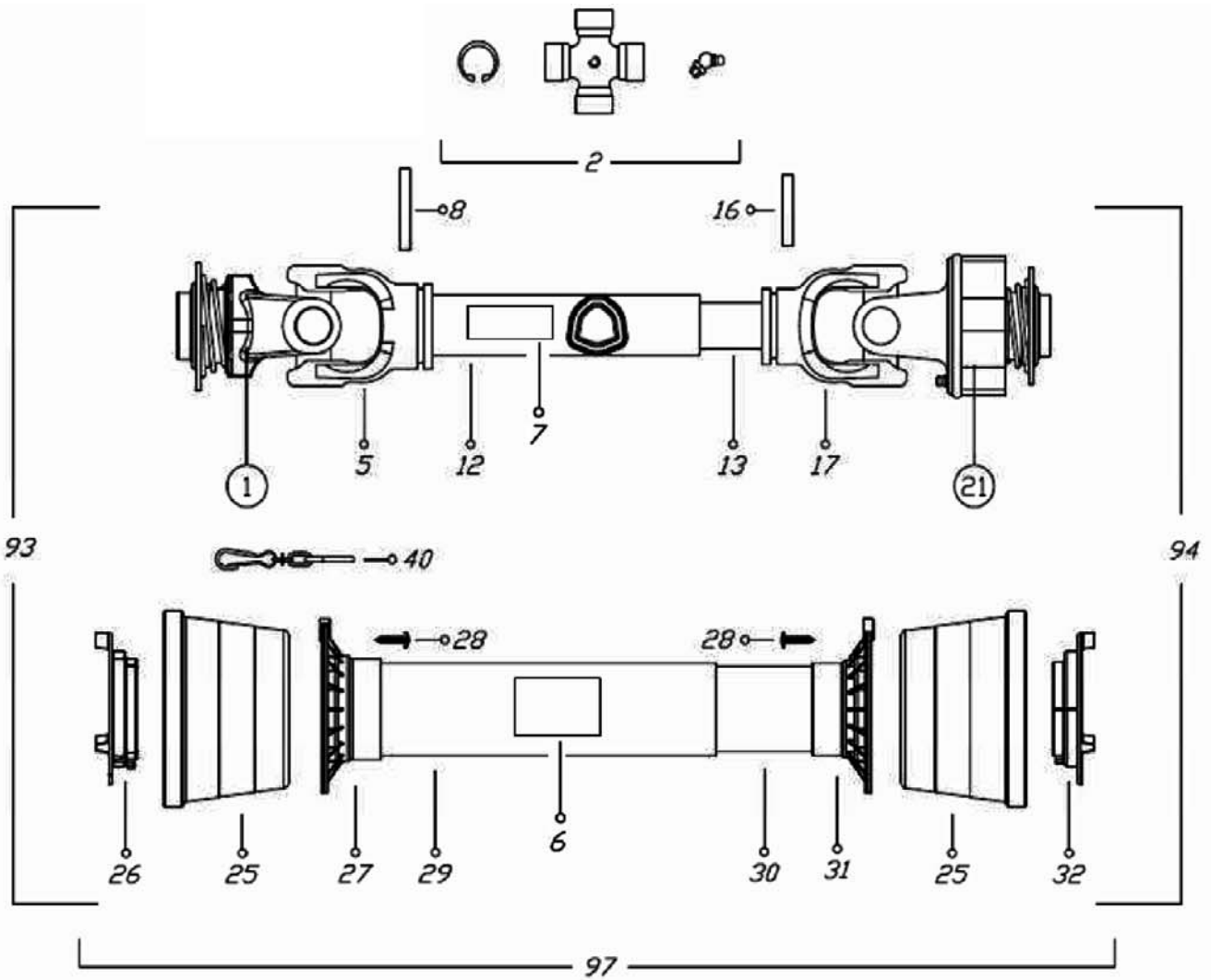
DHM10 HAY MOWER CUTTER BAR and GEARBOX

Ref. No.	Part No.	Description	Qty.	SPN
1	----	PLUG	1	100.774
2	----	BUSH	2	610.232
3	----	BEARING	2	620.129
4	----	WASHER	4	100.883
5	----	TAB	1	620.141
6	71211	BEVEL GEAR	1	100.772
7	----	GEARBOX CASING	1	100.992
8	----	COVER	1	100.770
9	----	SCREW, M10 x 1.5 x 22 8.8 ZN	8	620.130
10	71215	OIL SEAL	1	620.156
11	----	BUSH	1	100.884
12	----	DRIVE SHAFT	1	100.771
13	70081	RING OR	1	620.171
14	70082	BEARING	1	620.172
15	70180	SEAL	1	620.161
16	100.366	COUNTER CLOCKWISE KNIFE	8	100.366
17	71220	SPROCKET	1	100.773
18	----	RING	1	620.145
19	----	SNAP RING	3	620.148
20	71221	O-RING GASKET	1	620.164
21	100.993	DISC SUPPORT	8	100.993
22	----	SPRING PIN, M10 x 12	2	620.143
23	100.367	CLOCKWISE KNIFE	8	100.367
24	110.463	CUTTING DISC	6	110.463
26	100.995	SLIDING SUPPORT	7	100.995
27	71270	GEAR	14	100.802
28	100.996	DISC COVER	1	100.996
29	71223	SCREW	1	100.790
30	----	SCREW, M12 x 1.75 x 50 12.9	3	620.243
31	----	NUT, M12 x 1.75	8	620.137
32	----	GEAR	1	100.906
33	----	SNAP RING	1	620.146
34	71280	BEARING	1	620.173
35	----	BEARING BUSH	1	100.885
37	----	SCREW, HSHCS M12 x 1.75 x 40 12.9	5	620.133
38	----	NUT, M8 x 1.25	4	620.174
39	----	SCREW, M8 x 25 8.8	4	620.131
40	----	NUT M10	128	620.136
41	----	REAR REINFORCEMENT	1	100.997
42	----	BEARING DISC SUPPORT	8	110.418
43	100.792	DISTANCE	6	100.792
44	----	SUPPORT (UPPER & LOWER)	1	100.998
45	71228	SCREW	97	100.782
46	----	SNAP RING	16	100.804
47	71236	BEARING	16	620.126
48	----	NUT	16	100.798
49	71269	GEAR	2	100.801
50	71231	SCREW	31	100.787
51	----	DISTANCE PIN	16	100.797
52	71234	SCREW	16	100.786
53	----	DISTANCE	16	100.785
54	71249	PLUG	2	100.789
55	----	WASHER	2	620.175

DHM10 HAY MOWER CUTTER BAR and GEARBOX

Ref. No.	Part No.	Description	Qty.	SPN
56	71244	NUT, M20 x 1.5	8	620.139
57	----	WASHER	8	620.150
58	620.128	BEARING	8	620.128
59	100.783	SCREW	8	100.783
60	100.795	WASHER, BELLEVILLE SPRING	8	100.795
61	----	BUSH	8	100.803
62	620.176	BEARING	8	620.176
63	71243	GEAR	8	100.800
64	71240	RING OR	8	620.165
65	70781	SEAL	8	620.159
66	----	HOOK	1	100.890
67	100.793	DISTANCE	2	100.793
68	----	SCREW, M10 x 20	48	620.244
70	110.001	SLIDING SUPPORT	1	110.001
71	----	SUPPORT DEFLECTOR	1	110.127
75	100.791	PLUG	2	100.791
76	110.464	DISC CONVEY	2	110.464
77	----	PLUG	1	500.056
78	----	SCREW, M10 x 1.5 x 25 12.9	1	620.245
79	----	RING OR	8	630.576
251	620.152	VENT PLUG, 3/8" GAS	1	620.152
252	100.986	SLIDING SUPPORT	1	100.986
253	----	SCREW, HSHCS M10 x 1.5 x 22 12.9	2	620.134
254	100.821	WASHER	16	100.821
255	100.796	SCREW	16	100.796
256	100.794	NUT	16	100.794
257	110.509	GEARBOX ASSY, CUTTER BAR	1	110.509

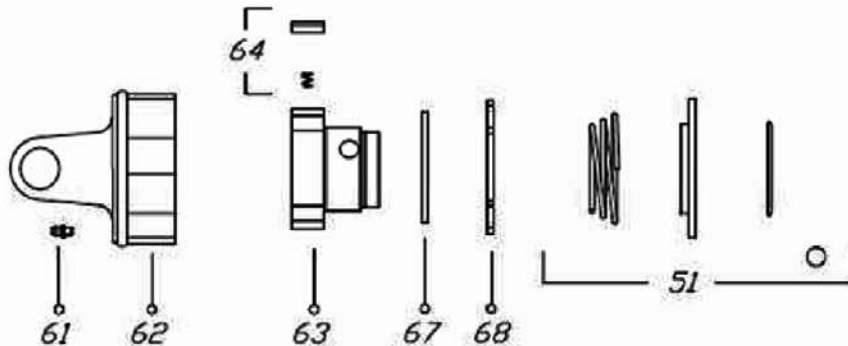
DHM7 HAY MOWER DRIVESHAFT ASSEMBLY



①



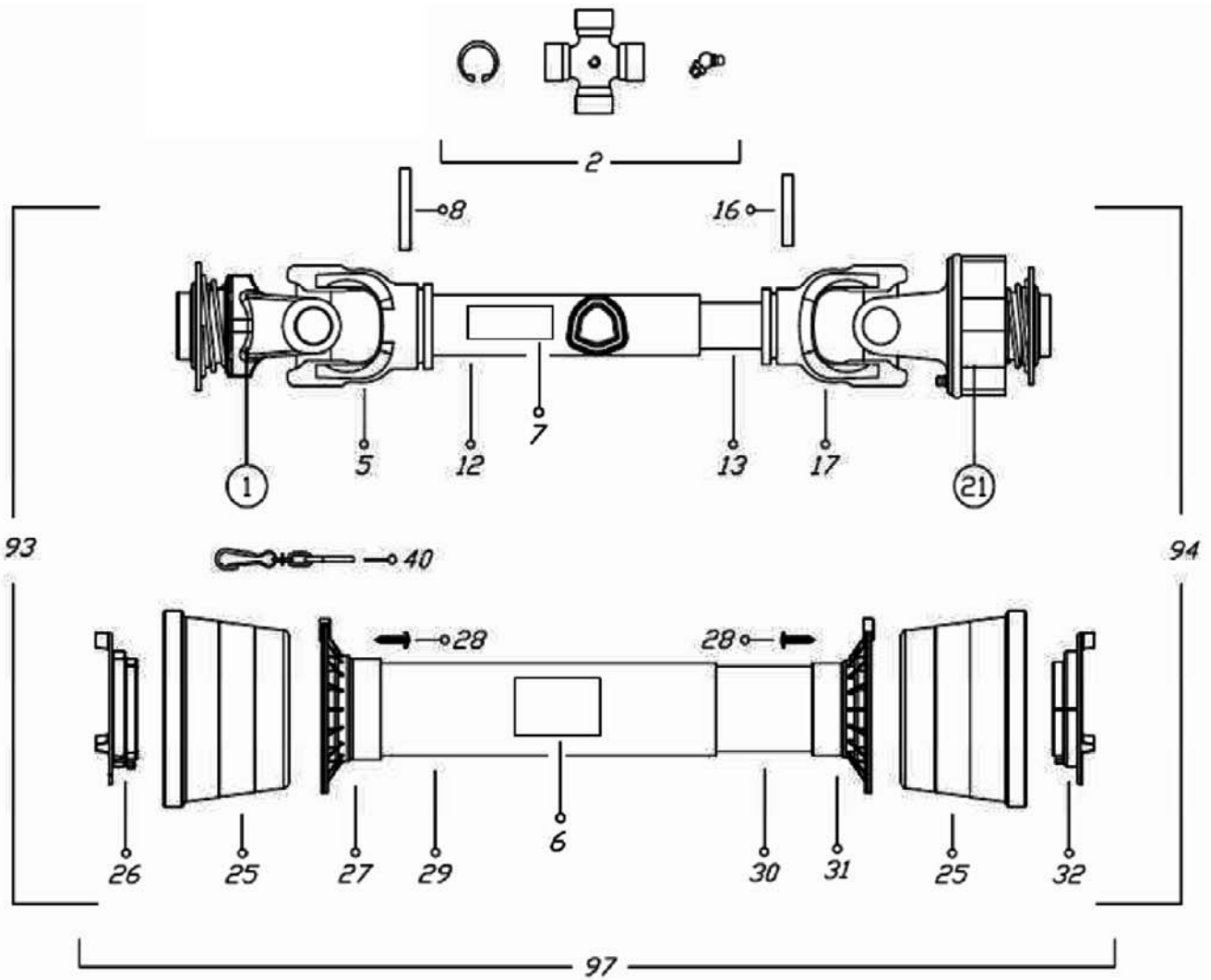
②



DHM7 HAY MOWER DRIVESHAFT ASSEMBLY

Ref. No.	Part No.	Description	Qty.	SPN
	630.430	DRIVESHAFT ASSEMBLY	1	630.430
1	----	YOKE	1	620.825
2	64694	CROSS JOURNAL ASSY	2	610.235
5	----	OUTER TUBE YOKE)	1	610.236
6	78608	LABEL, DANGER ROTATING	1	001.411
7	78786	LABEL, DANGER SHIELD	1	001.316
8	----	FLEXIBLE PIN	1	610.208
12	----	CM. 100 CARDAN TUBE	1	610.209
13	----	CM. 100 CARDAN TUBE	1	610.237
16	----	FLEXIBLE PIN	1	610.211
17	----	INNER TUBE YOKE	1	610.238
21	----	FREE WHEEL	1	620.898
25	----	CONE SHIELD BELL 03-04	2	630.400
26	----	OUTER BEARING 03-04	1	630.401
27	----	OUTER BASE CONE 03-04	1	630.402
28	----	SCREW	6	630.389
29	----	OUTER SAFETY TUBE	1	630.403
30	----	INNER SAFETY TUBE	1	630.404
31	----	INNER BASE CONE 03-04	1	630.405
32	----	INNER BEARING 03-04	1	630.406
40	----	CHAIN	1	610.068
51	620.830	BALL COLLAR KIT	2	620.830
61	----	GREASE NIPPLE	1	610.206
62	----	OUTER CASING WITH YOKE	1	610.354
63	----	HUB 1-3/8" Z6	1	630.396
64	----	RATCHET TOOTH	3	620.873
67	----	RETAINING RING	1	620.874
68	----	CIRCLIP	1	610.253
93	----	OUTER HALF SHAFT	1	630.408
94	----	INNER HALF SHAFT	1	630.409
97	----	SAFETY GUARD	1	630.410

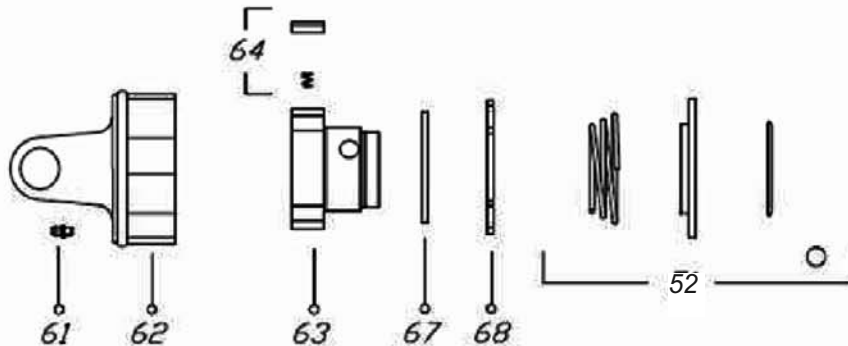
DHM8, DHM9 HAY MOWER DRIVESHAFT ASSEMBLY



①



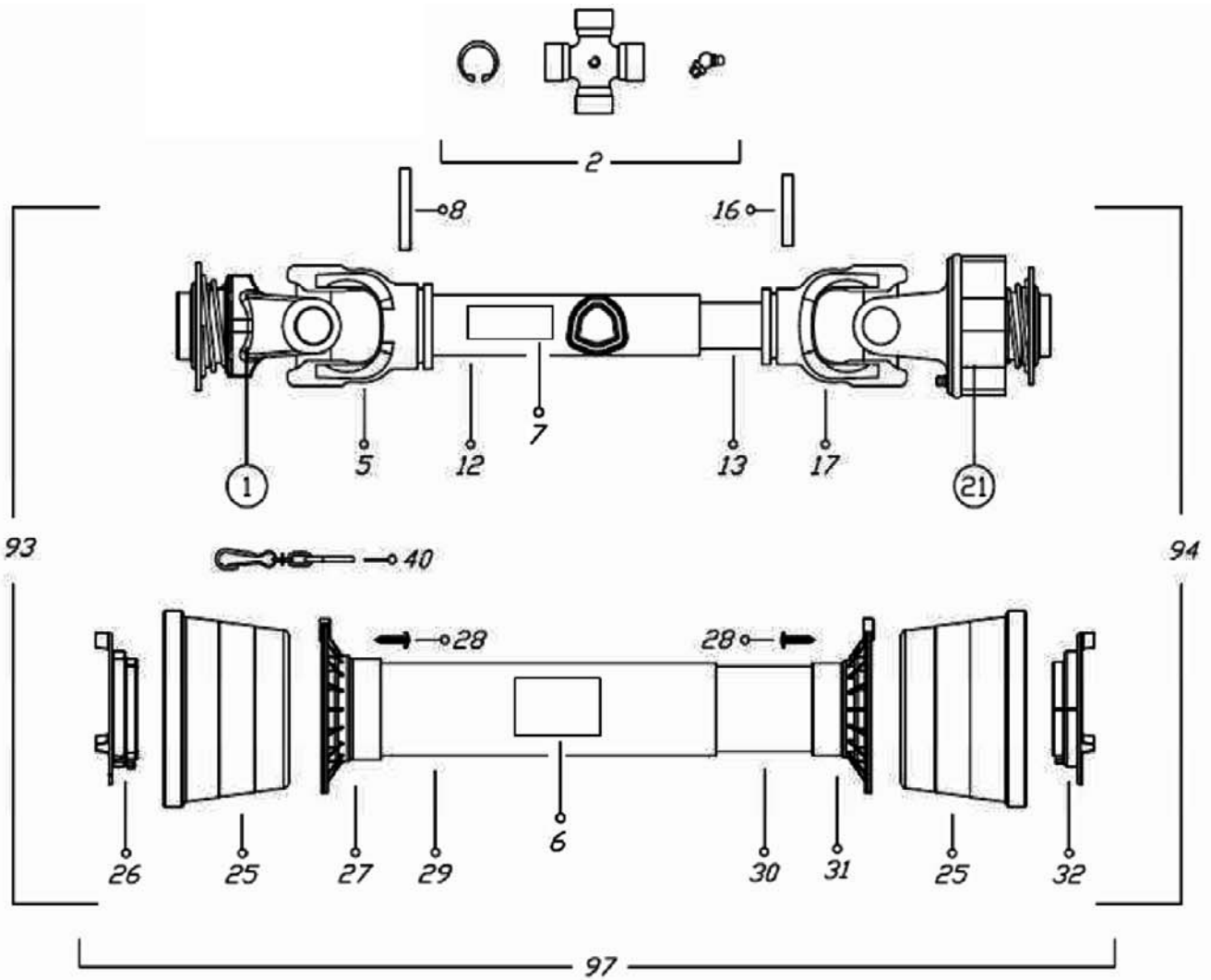
②



DHM8, DHM9 HAY MOWER DRIVESHAFT ASSEMBLY

Ref. No.	Part No.	Description	Qty.	SPN
	630.932	DRIVESHAFT ASSEMBLY	1	630.932
1	----	YOKE	1	630.382
2	610.368	CROSS JOURNAL ASSY	2	610.368
5	----	OUTER TUBE YOKE	1	610.370
6	78608	LABEL, DANGER ROTATING	1	001.411
7	78786	LABEL, DANGER SHIELD	1	001.316
8	----	FLEXIBLE PIN	1	630.383
12	----	CM. 100 CARDAN TUBE	1	610.372
13	----	CM. 100 CARDAN TUBE	1	610.373
16	----	FLEXIBLE PIN	1	630.384
17	----	INNER TUBE YOKE	1	610.375
21	----	FREE WHEEL	1	630.385
25	----	CONE SHIELD BELL 05-06	2	630.386
26	----	OUTER BEARING 05	1	630.387
27	----	OUTER BASE CONE 05-06	1	630.388
28	----	SCREW	6	630.389
29	----	OUTER SAFETY TUBE	1	630.972
30	----	INNER SAFETY TUBE	1	630.973
31	----	INNER BASE CONE 05-06	1	630.392
32	----	INNER BEARING 05	1	630.393
40	----	CHAIN	1	610.068
51	630.394	BALL COLLAR KIT	1	630.394
52	620.830	BALL COLLAR KIT	1	620.830
61	----	GREASE NIPPLE	1	610.206
62	----	OUTER CASING WITH YOKE	1	630.395
63	----	HUB 1-3/8" Z6	1	630.396
64	----	RATCHET TOOTH	3	620.873
67	----	RETAINING RING	1	620.874
68	----	CIRCLIP	1	610.253
93	----	OUTER HALF SHAFT	1	630.974
94	----	INNER HALF SHAFT	1	630.975
97	----	SAFETY GUARD	1	630.976

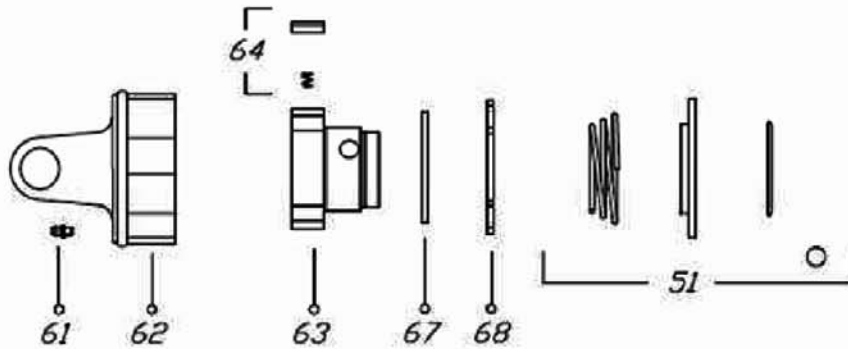
DHM10 HAY MOWER DRIVESHAFT ASSEMBLY



①



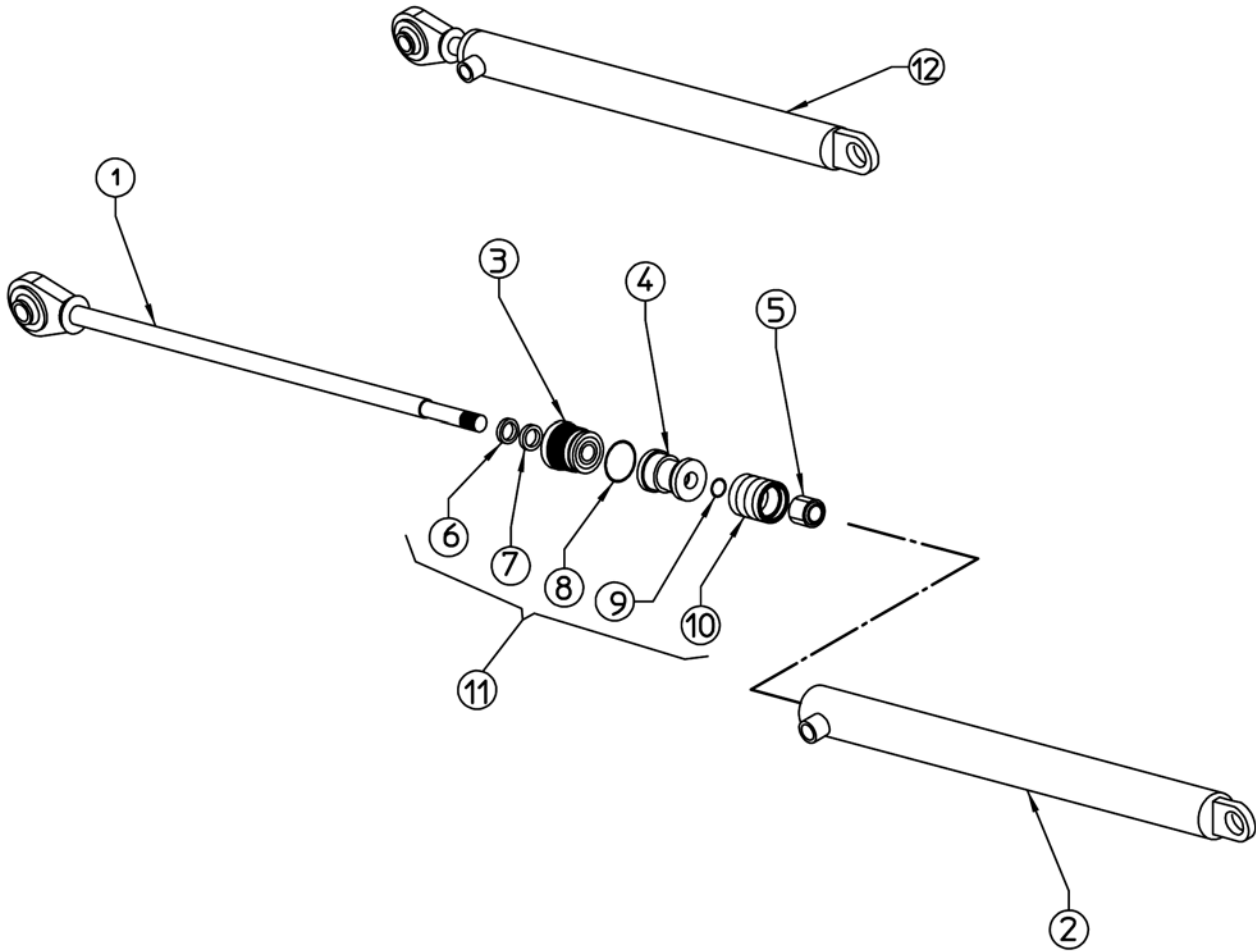
②



DHM10 HAY MOWER DRIVESHAFT ASSEMBLY

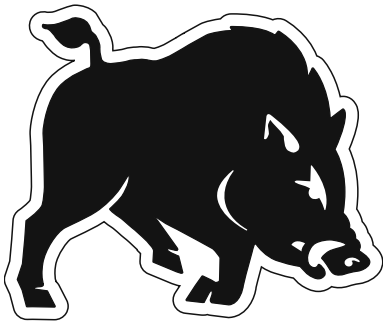
Ref. No.	Part No.	Description	Qty.	SPN
	620.237	DRIVESHAFT ASSEMBLY	1	620.237
1	----	YOKE	1	620.079
2	620.080	CROSS JOURNAL ASSY	2	620.080
5	----	OUTER TUBE YOKE	1	620.081
6	630.720	LABEL, DANGER ROTATING	1	630.720
7	630.719	LABEL, DANGER SHIELD	1	001.316
8	----	FLEXIBLE PIN	1	630.383
12	----	CM. 100 CARDAN TUBE	1	620.083
13	----	CM. 100 CARDAN TUBE	1	610.373
16	----	FLEXIBLE PIN	1	630.384
17	----	INNER TUBE YOKE	1	620.085
21	----	FREE WHEEL	1	630.851
25	----	CONE SHIELD BELL 05-06	2	630.386
26	----	OUTER BEARING	1	630.852
27	----	OUTER BASE CONE 05-06	1	630.388
28	----	SCREW	6	630.389
29	----	OUTER SAFETY TUBE	1	630.878
30	----	INNER SAFETY TUBE	1	630.879
31	----	INNER BASE CONE 05-06	1	630.392
32	----	INNER BEARING 05	1	630.880
40	----	CHAIN	1	610.068
51	----	BALL COLLAR KIT	1	610.057
52	630.394	BALL COLLAR KIT	1	630.394
61	----	GREASE NIPPLE	1	610.216
62	----	OUTER CASING WITH YOKE	1	620.270
63	----	HUB 1-3/8" Z6	1	630.396
64	----	RATCHET TOOTH	3	620.873
67	----	RETAINING RING	1	620.874
68	----	CIRCLIP	1	610.253
93	----	OUTER HALF SHAFT	1	620.094
94	----	INNER HALF SHAFT	1	630.882
97	----	SAFETY GUARD	1	630.883

DHM7 HAY MOWER CYLINDER ASSEMBLY



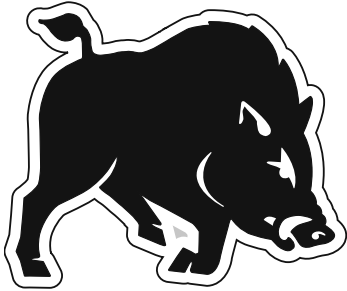
Ref. No.	Part No.	Description	Qty.	SPN
1	----	ROD	1	100.741
2	----	CYLINDER BARREL	1	100.742
3	----	CYLINDER HEAD	1	210.288
4	----	PISTON	1	220.668
5	----	NUT	1	610.646
6	----	GASKET WRM 078110 (ROD Ø20)	1	610.025
7	----	GASKET POLYPAC B 110078 (ROD Ø20)	1	610.027
8	----	O-RING OR 139 (Ø32.09 x 3.53)	1	610.026
9	----	O-RING 219 (Ø15.08 x 2.62)	1	610.029
10	----	GASKET POLYPAC DBM 157118	1	610.028
11	600.895	CYLINDER GASKET SET	1	600.895
12	100.169	CYLINDER ASSEMBLY	1	100.169

DHM7, DHM8, DHM9, DHM10 HAY MOWER LOGO DECALS



1

BUSH HOG®



2

BUSH HOG®

DHM7 DHM8

3

4

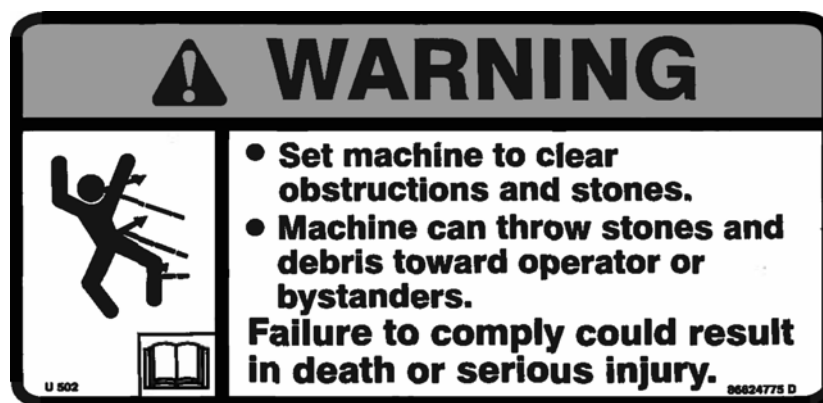
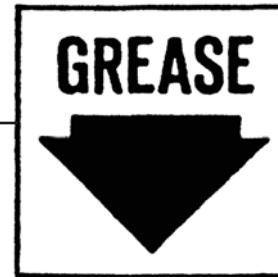
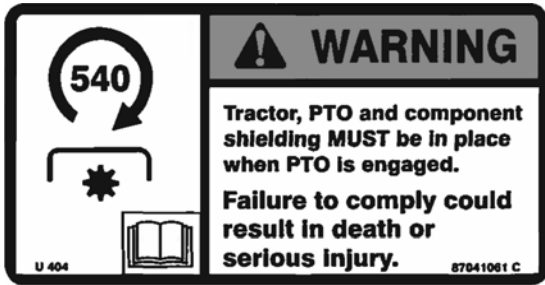
DHM9 DHM10

5

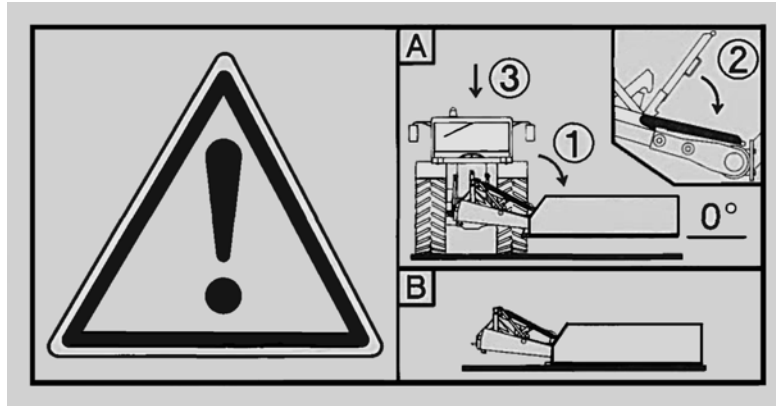
6

Ref. No.	Part No.	Description	Qty.
1	50065309	Bush Hog Decal 3.25" x 14.85" (DHM7)	1
	50061049	Bush Hog Decal 4.85 "x 22.00"(DHM8/9/10)	1
2	50058089	Bush Hog Decal 2.42" x 11"	1
3	50078273	DHM7 Model Decal	1
4	50078274	DHM8 Model Decal	1
5	50078275	DHM9 Model Decal	1
6	50078276	DHM10 Model Decal	1

DHM7, DHM8, DHM9, DHM10 HAY MOWER SAFETY DECALS



DHM7, DHM8, DHM9, DHM10 HAY MOWER SAFETY DECALS



6



7



8

Ref. No.	Part No.	Description	Qty.	SPN
1	001.318	Warning Decal , 540 RPM -Shielding	1	001.318
2	001.075	Gease Point Lable	4	001.075
3	001.319	Warning Decal, Jackstand	1	001.319
4	52740	Oil Leak Warning Decal	1	52740
5	001.317	Warning Decal, Thrown Objects	1	001.317
6	001.695	Caution Decal, Disconnect	1	001.695
7	001.320	Warning Decal, Read Manual	1	001.320
8	D559	WarningDecal, Genuine Bush Hog Parts	1	—



BUSH HOG[®]

2501 Griffin Ave. • Selma, AL 36703
www.bushhog.com