

Space for Urban Green

08 September 2021

- **ESA introduction**
- **“Space for Urban Green” Invitation to Tender**
 - Objectives
 - Examples of applications
- **An example of use-case**
 - Jan Schäfer (City of Essen)
- **EO Platforms**
 - Marc Paganini (ESA)
- **How to apply: funding and tender information**
- **Open Questions & Answers session**



EUROPE'S GATEWAY TO SPACE

WHAT

22 Member States, 5000 employees

WHY

Exploration and use of space for exclusively peaceful purposes

WHERE

HQ in Paris, 7 sites across Europe and a spaceport in French Guiana

HOW MUCH

€6.68 billion = €12 per European per year



What Does ESA Do?



THIS IS POSSIBLE THANKS TO THE COLLABORATION OF MEMBER STATES

ESA is active across every area of the space sector

World leader in science and technology

Over 80 satellites developed, tested, and operated since 1975

More than 220 launches from Europe's Spaceport in Kourou



APPLICATIONS

Telecommunications & Integrated Applications

Navigation

Earth Observation

ENABLING & SUPPORT

Space Transportation

Engineering & Technology

Operations

SCIENCE & EXPLORATION

Space Science

Human & Robotic Exploration

The largest space innovation network in the world

- The go-to place for great business involving space to improve everyday life.
- Supporting European start-ups and SMEs to develop businesses using space technology and data.
- Offering funding, business and technical support to help to generate successful business, and create positive socio-economic impacts.





ESA UNCLASSIFIED



Invitation To Tender
open
from 1 October 2021
until 12 November 2021

Funding up to € 200K per activity
(100% ESA funded)

Duration 9 months

ESA-STAR reference number AO10973



- Cities are going digital: the natural capital upon which cities rely risks being left behind by the digital revolution.
- There has been an increase of mobility into green spaces and public gardens for physical exercise and mental calming.
- UN estimates every week, 3Mio people move to cities
- Green infrastructure such as urban parks are critical components of urban sustainability and resilience.
- Need to consider to what extent urban green spaces can be effectively be integrated into smart city planning, to maximize benefits for all citizens.
- Aligned with EU Green Deal



Call for tenders

Define innovative space-based applications in support of the development Urban Green Services

- technical feasibility & economic viability assessment
- roadmap for services implementation definition
- follow-on demonstration project preparation



€ 200K per study (100% funded)- duration 9 months

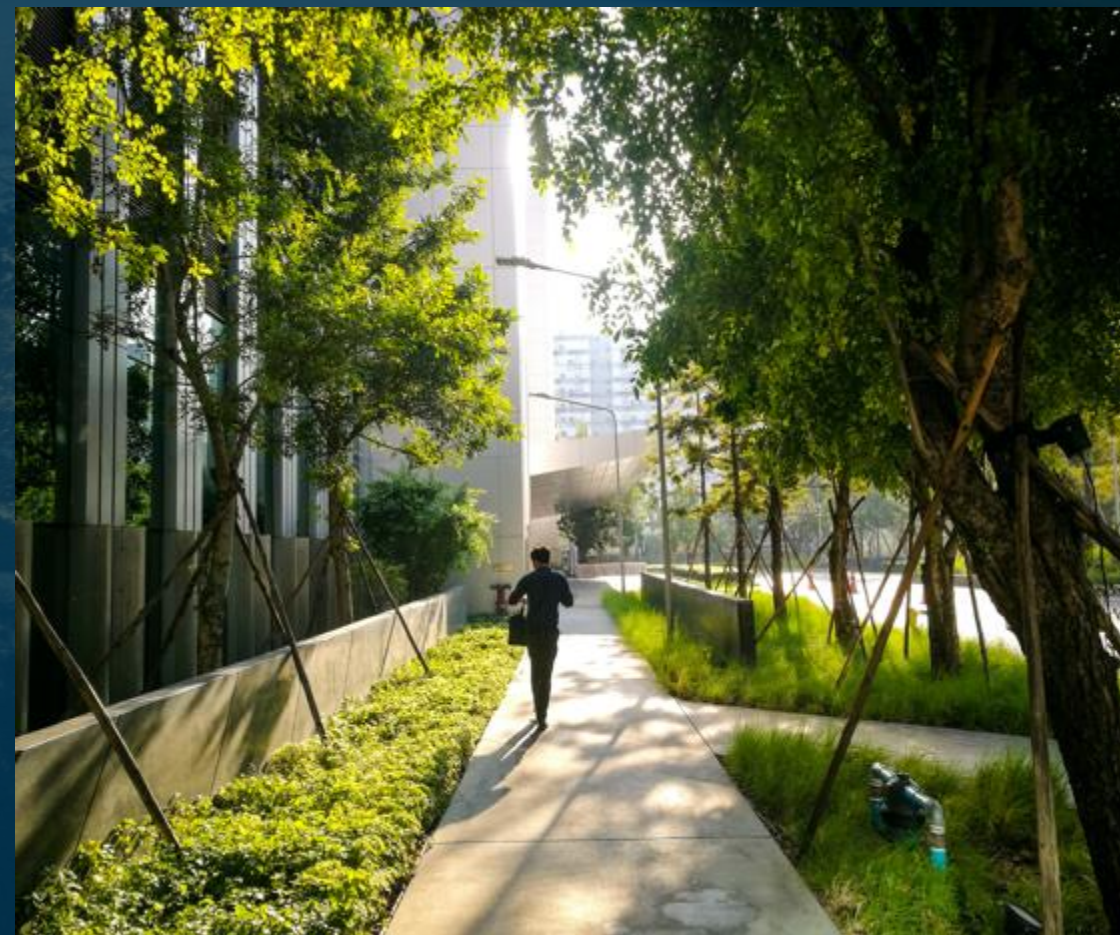
Tender open on 1 October 2021

Areas of Applications:

Design & Planning of Urban Green Spaces

Management of Urban Green Spaces

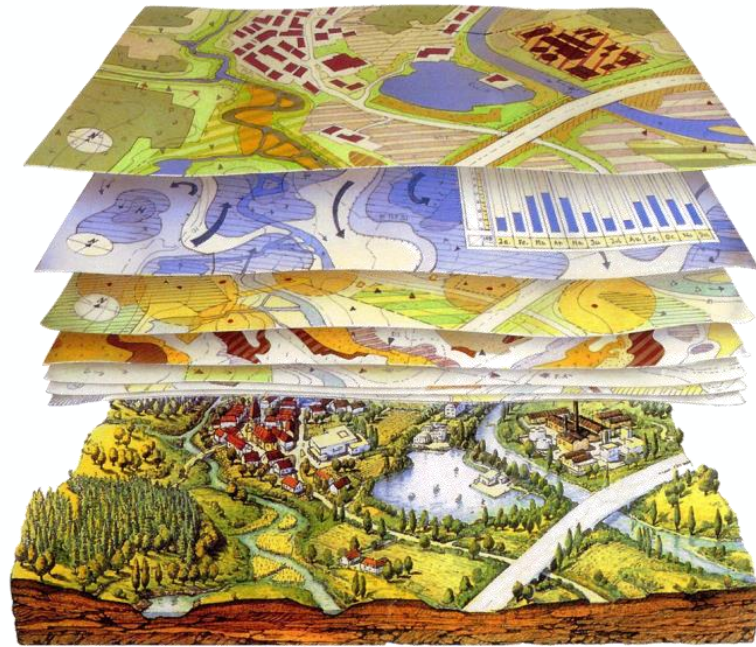
Urban Green Indicators



Presented by representative of the Essen City-Mr Jan Schäfer

STADT
ESSEN

Data collection and processing at the
Metropolregion Ruhr & City of Essen



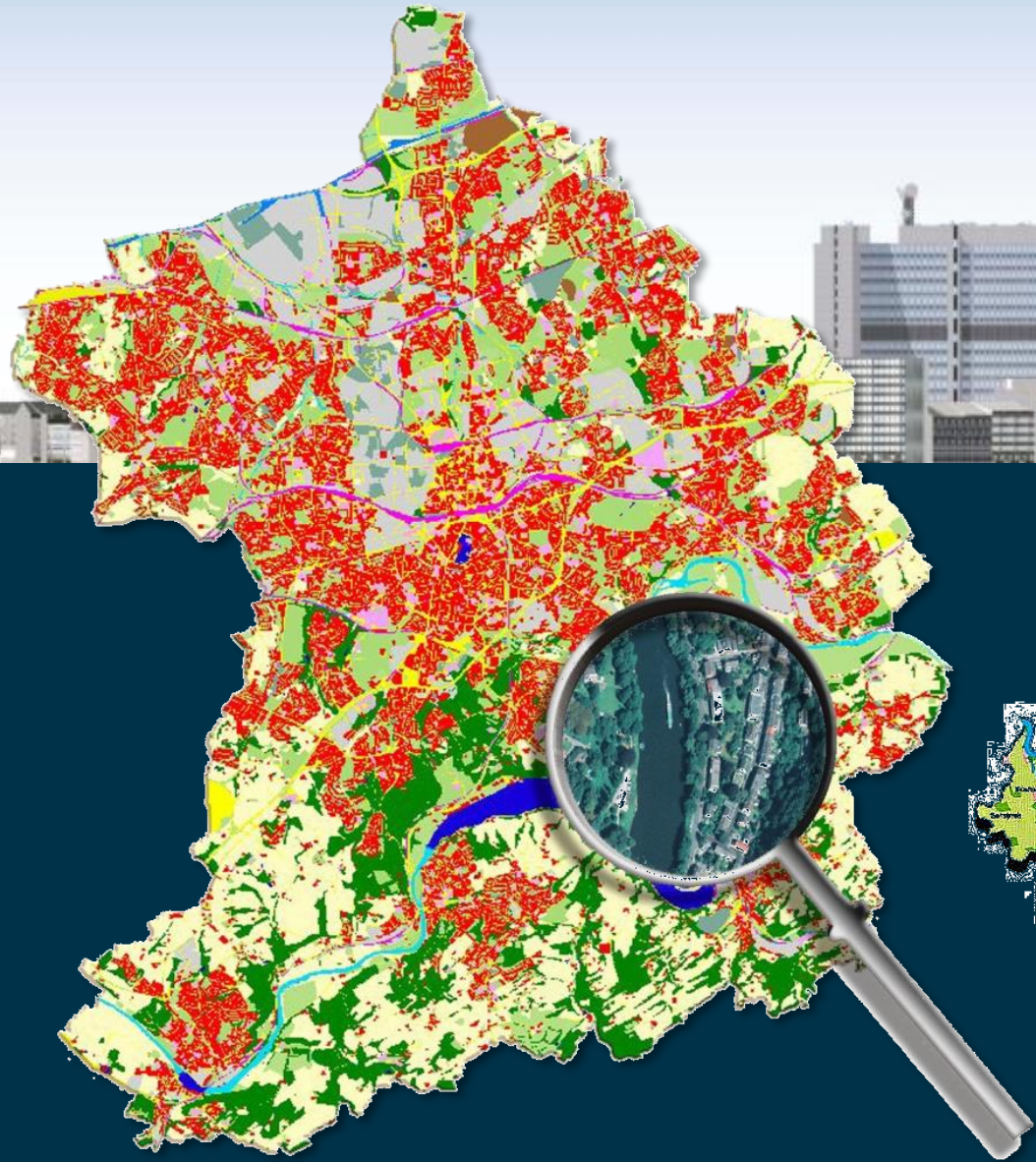


RUHR GEBIET



esa





City of Essen

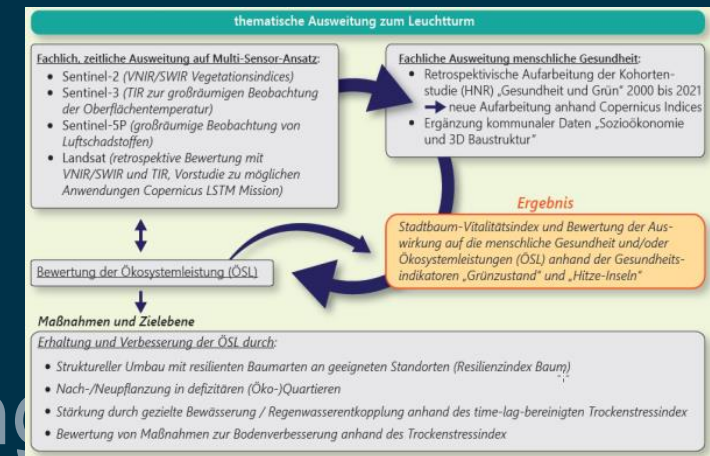
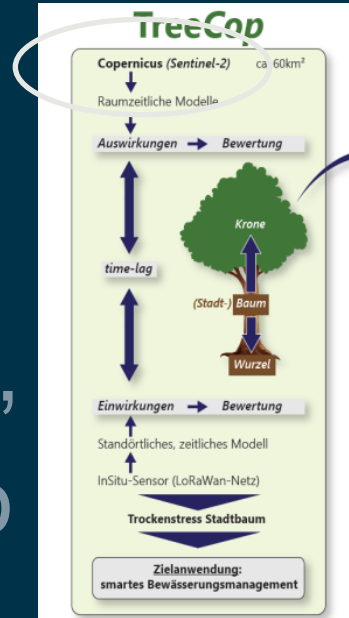
Area of Interest



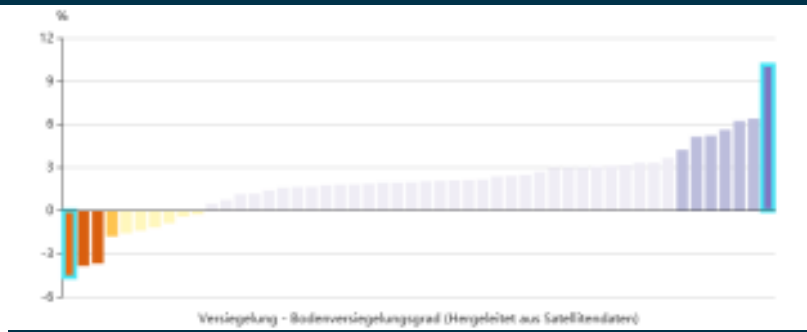
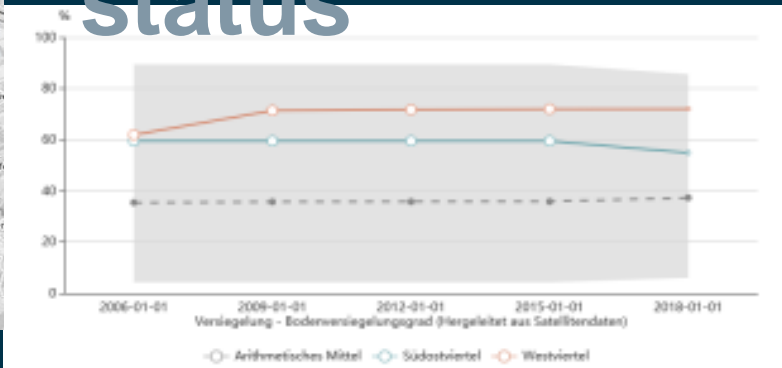
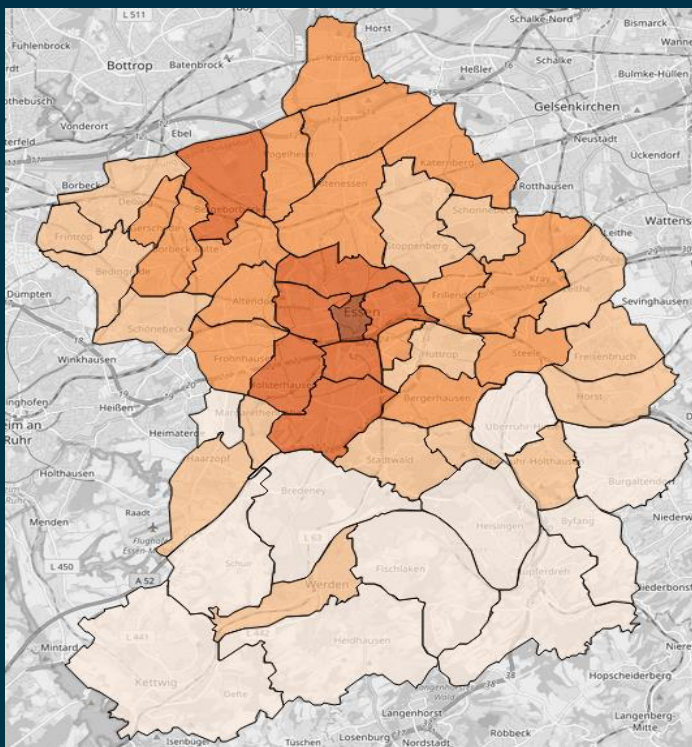
activities

development of sustainable space-based services which can contribute to the monitoring, protection and integration of green spaces into smart city planning and urban green management

monitoring their health status and air quality in the surrounding to maximize their benefit for the citizens



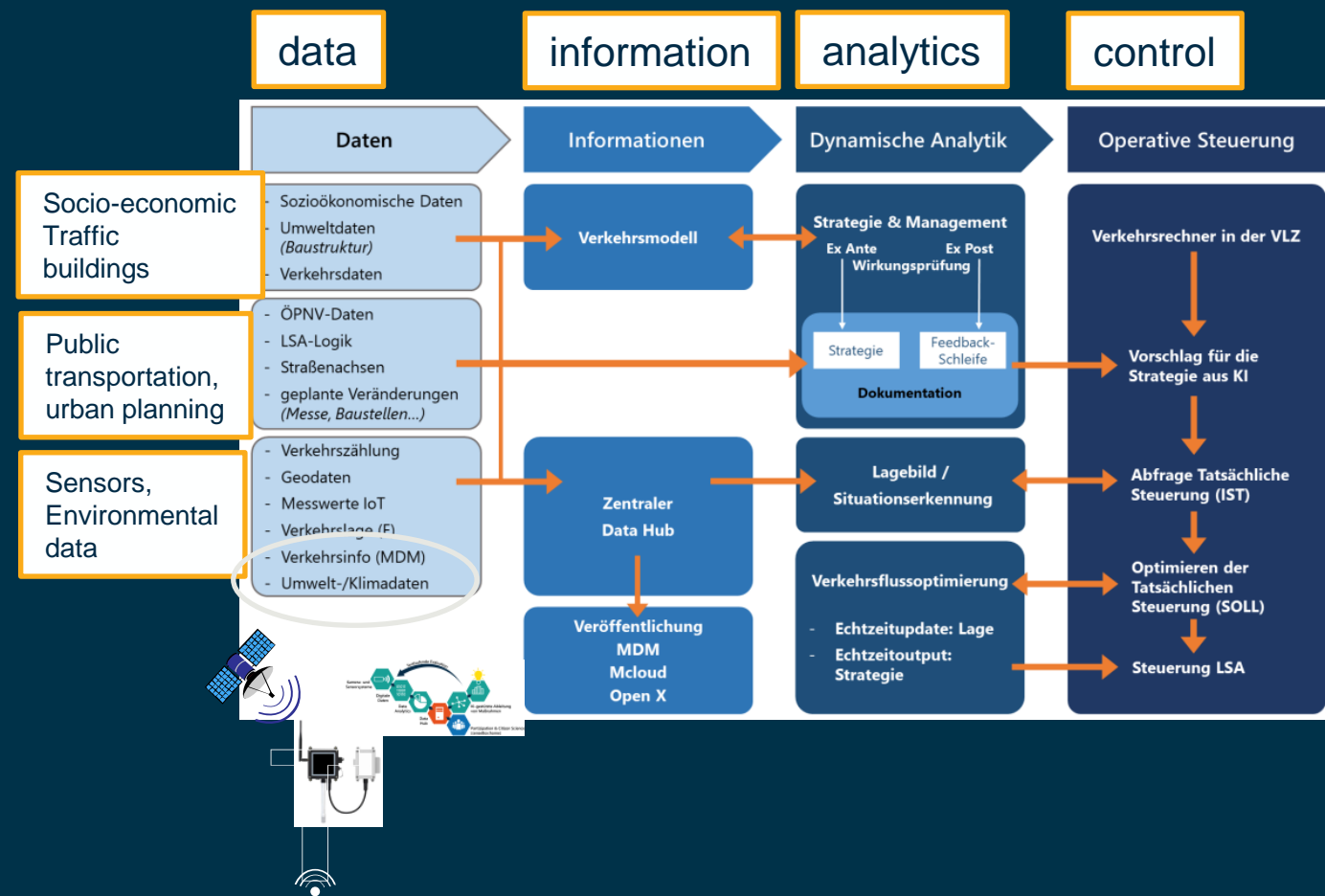
description of changes in spatial and temporal speed (dynamics) by building up time series for content of land consumption, ground sealing, air quality and health status



activities

Solutions supporting **sustainable urban transport and Mobility as a Service (MaaS)** combining public, private and multiple modes for transport users

Solutions to assess the **reduction of carbon emissions and particulate matter** in the urban and suburban areas

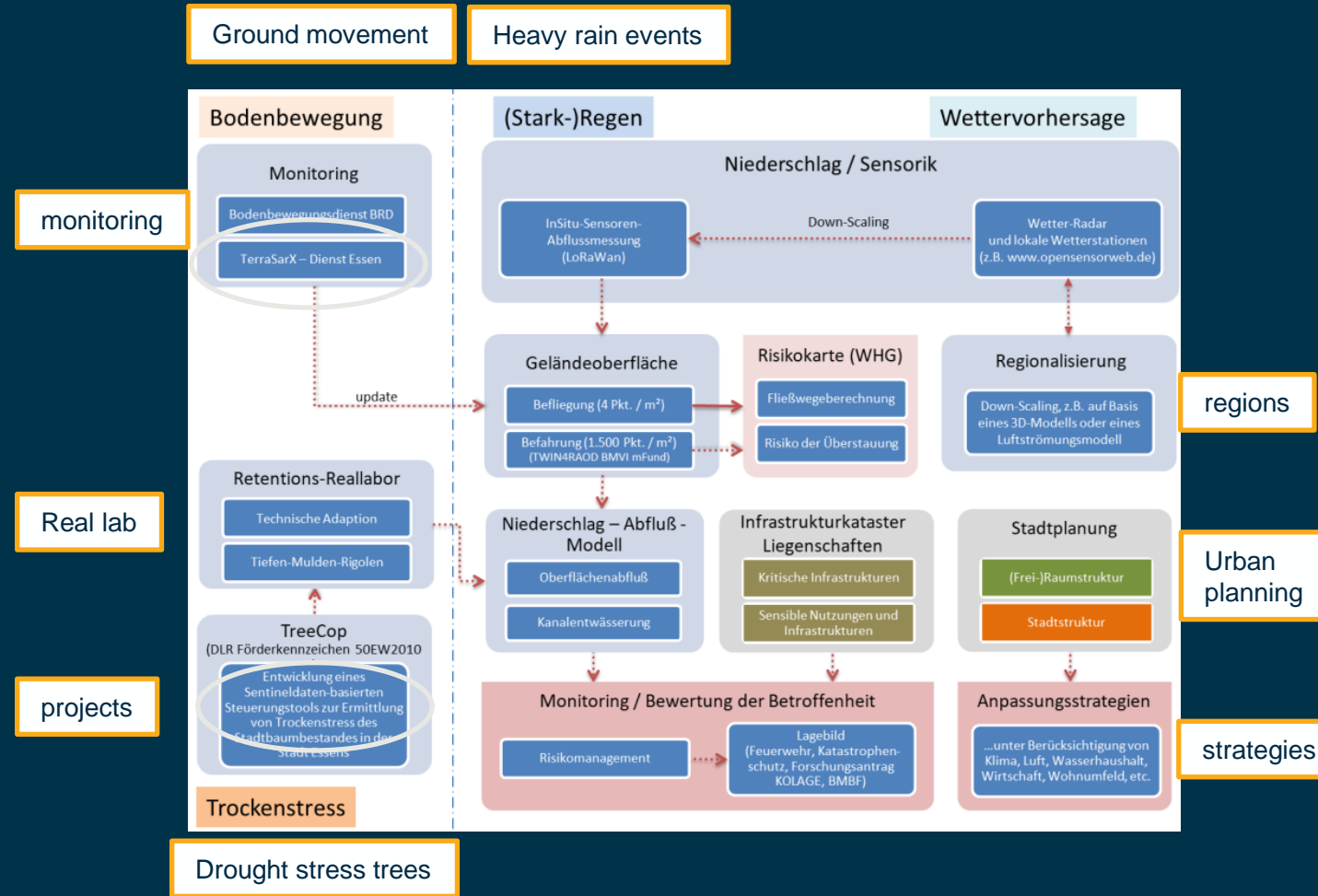


activities

Support the strengthening of the **urban disaster resilience**, such as impact from **floods** and protection during **heatwaves**, with space-based solution for a land-use planning and infrastructure

Support initiatives to enhance **biodiversity** by leveraging space and terrestrial technologies

Support the collection of analytics to build the evidence base of the **new services** and their impacts



You want more information?

Feel free to contact us.

We can also provide datasets from the mentioned activities.



Satellite Navigation

- Provide geo-tagging services for data collected by smartphones and IOT
- support the collection of crowd-sourced data



Earth Observation data

- provide diverse geospatial, environmental, weather, mapping information
- Support planning, monitoring, identification and maintenance of Urban Green

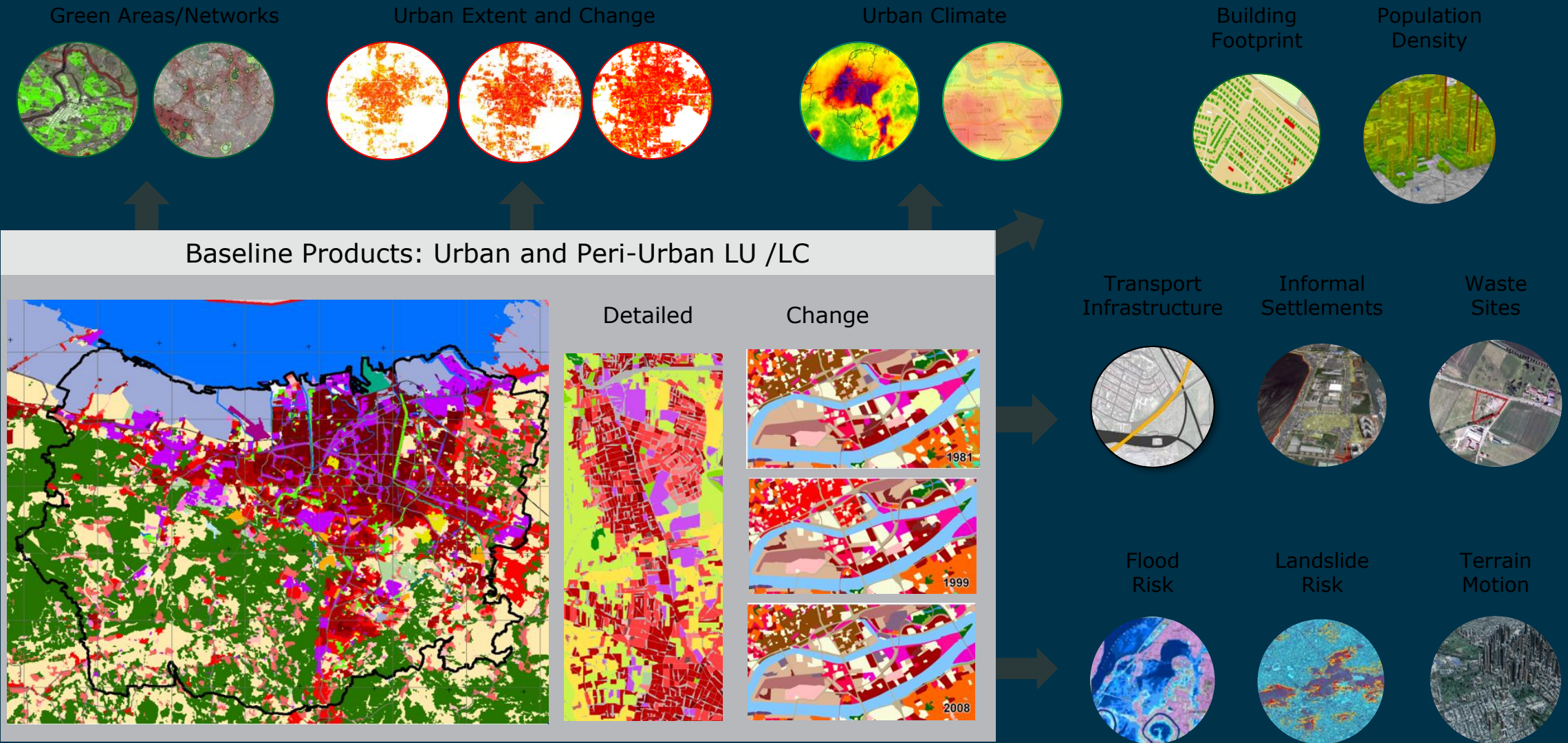


Satellite Communications

- will safely and securely provide connectivity in the absence of terrestrial communications or in case of terrestrial network failures
- will transmit data collected by in-situ sensors
- 5G convergence between SatCom and terrestrial communications

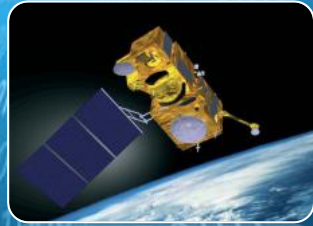
Presented by ESA representative- Marc Paganini

EO for sustainable and resilient cities



Advent of steady satellite data streams

>20 TB per day



Mobilise the data revolution

Data are the foundation of urban development policies and program implementation

Building on ICT advances

High Performance Computing Infrastructures

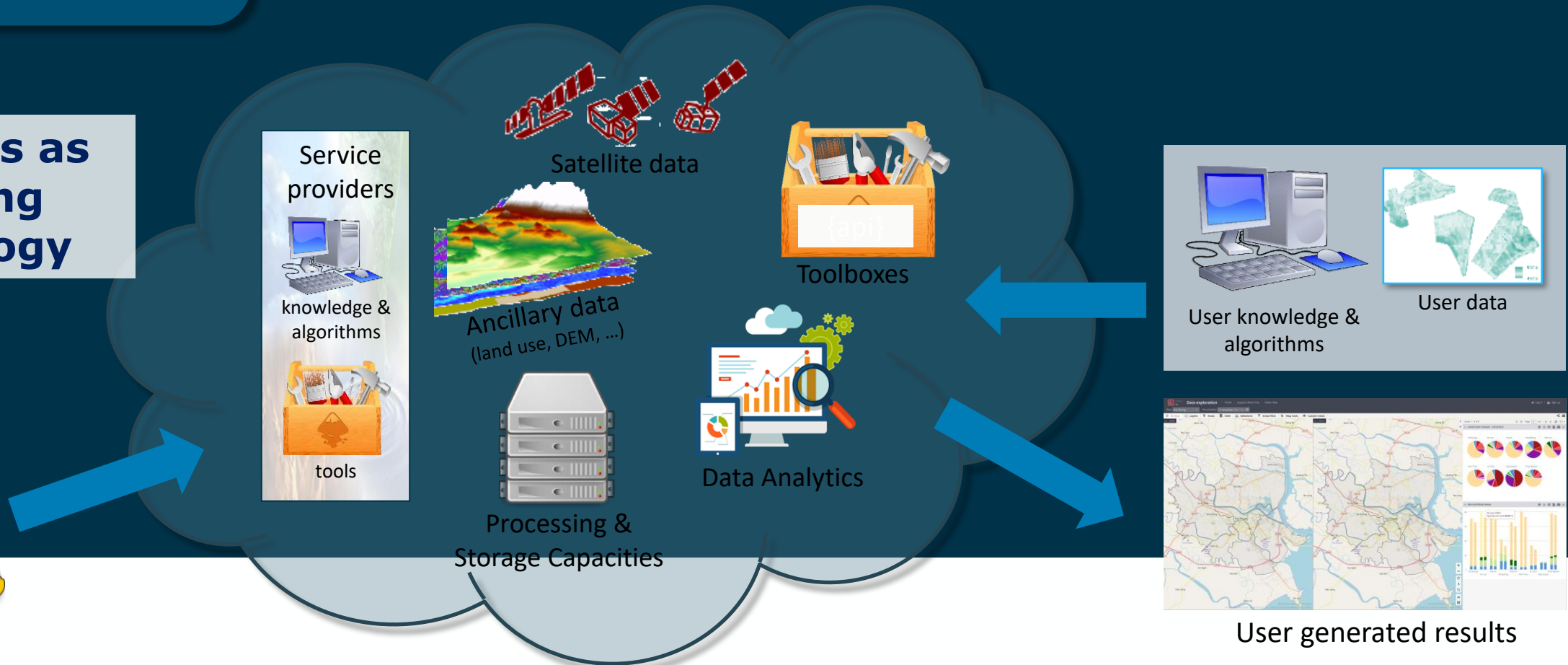


The emergence of "big data" exploitation platforms

The power of the
Cloud
The power of
Partnerships

"Bringing the users to the data"

Platforms as
enabling
technology

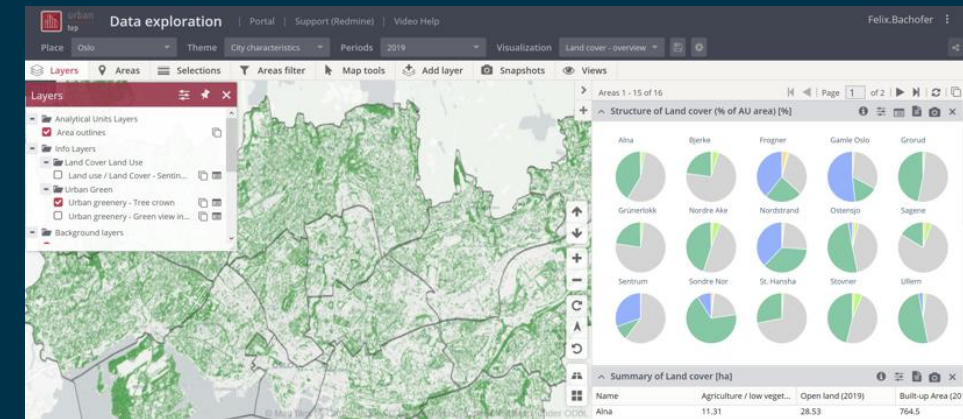
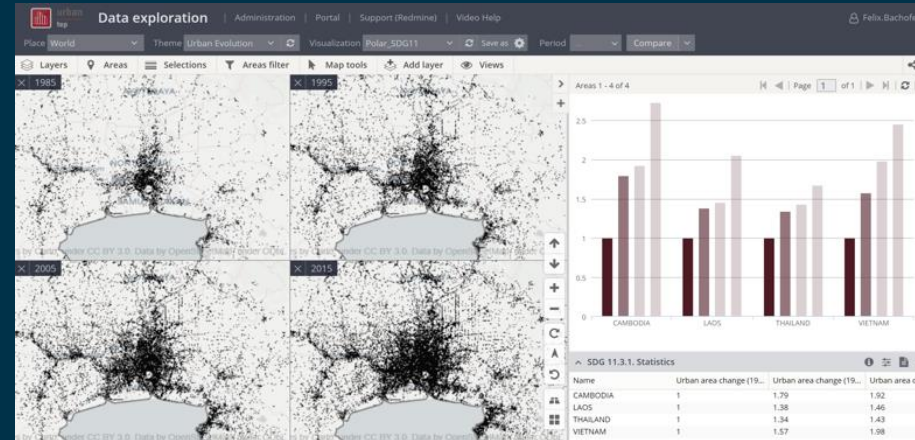


Urban Thematic Exploitation Platform

Urban TEP (U-TEP)

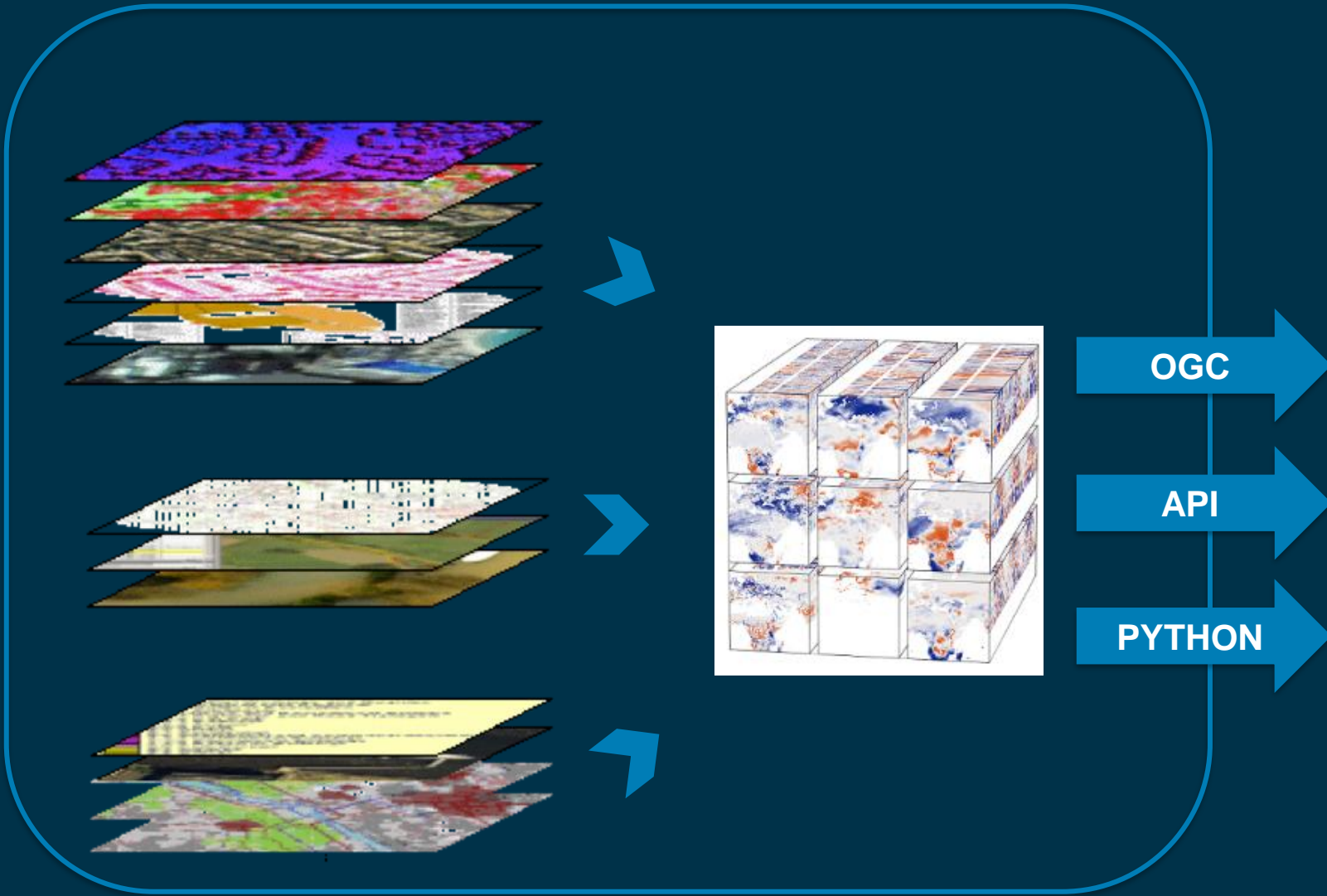
a collaborative on-line infrastructure
with multi-source
data processing and data analytics
for urban applications

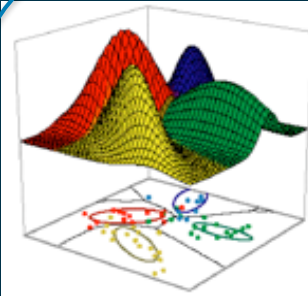
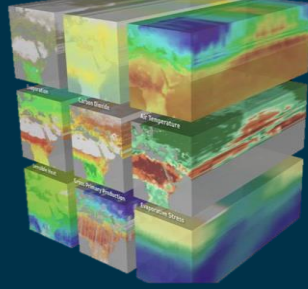
- ... all **data** and **tools** needed to
- ... to access or generate **actionable information**
- ... in support of **sustainable** and **livable cities**...
- ... available at **one place**

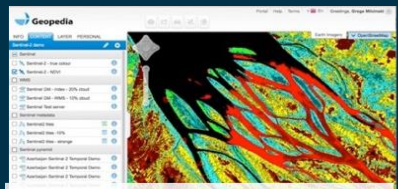


<https://urban-tep.eu/>

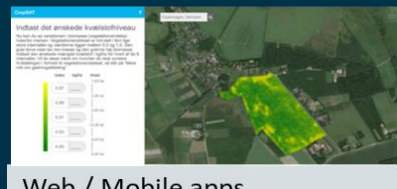
City datacubes for informed decision making



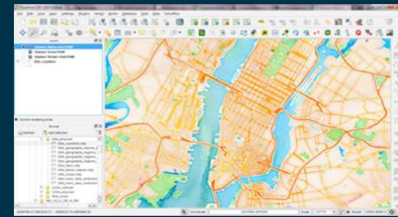





Cloud GIS



Web / Mobile apps



Desktop (QGIS,, ArcGIS...)

```

python
    <code>
    </code>
        
```

Scripting (R, Python, ENVI...)

The EO Information Factory

The most comprehensive source of Earth Observation, in-situ data and value-added information at your fingertips.

[+ FREE TRIAL ACCESS](#)

[GUIDE: ESA SPONSORING \(NETWORK OF RESOURCES\)](#)

Already using Euro Data Cube? [Log in](#)

Watch the introduction video:



[EDC RACE Dashboard Challenge #3](#) [LEARN MORE](#)

Network of Resources (NoR)

NoR Sponsorship

The NoR call aims to support research, development and pre-commercial users to innovate their working practices, moving from a data download paradigm towards a 'bring the user to the data' paradigm, considered essential for maintaining competitiveness of European data exploitation. The [NoR Discovery Portal](#) provides an ever increasing portfolio of innovative operational platform and cloud services operated by actors from participating [countries](#)¹. Usage of these resources shall accelerate the achievement of scientific goals and the sharing of the results, or to approach the digital information market quicker and in an easier sustainable way.

The NoR will provide successful applicants with a voucher for the selected services, allowing free-at-point-of-use consumption for research, product development and up to pre-commercial demonstration. Vouchers must not be used to support any commercial revenue flows.



<https://eo4society.esa.int/network-of-resources/nor-sponsorship/>

- User/Customer engagement is essential to

focus on relevant solutions for user & stakeholders communities, addressing their vision, needs, requirements, constraints, etc.,

- User/Customer engagement is required

from the outset of the study and shall be reinforced by the Contractor during the whole study

Letter(s) of interest/intent from relevant user/customer representative shall be provided with the proposal

ESA has established partnerships with some European Cities who have expressed their interest in being involved in the activity and in providing feedback in relation to the study results.

How to apply: Funding and Tender Information

ESA TENDER INFORMATION

Funded participation to ESA Space Solutions is open to any company and/or organisation, be it as group of users, public body or non-governmental organisation, residing in the following Member States:

Austria, Belgium, Czech Republic, Denmark, Estonia, Finland, France, Germany, Hungary, Ireland, Italy, Luxembourg, the Netherlands, Norway, Poland, Portugal, Romania, Spain, Sweden and Switzerland.



HOW TO APPLY

1. Register (minimum 'light registration') by completing online questionnaire on ESA-STAR Registration (esastar-emr.sso.esa.int)
2. Download the official tender documentation (Invitation to Tender), which will be available as soon as the ITT is open via ESA-STAR, ITT number is **A010973**
3. Create 'Bidder Restricted Area' in ESA-STAR
4. Write your Proposal using the template provided in the Tender documentation and obtain Letter of Authorization from your National Delegation (business.esa.int/national-delegations)
5. Submit your proposal via 'Bidder Restricted Area' in ESA-STAR Tendering (esastar.sso.esa.int)

More info can be found here:

esa.int/About_Us/Business_with_ESA/How_to_do/esa-star_Registration_Process



BASIC PRINCIPLES - ESA-STAR

[ESA-STAR Registration](https://esastar-emr.sso.esa.int) <https://esastar-emr.sso.esa.int>



The screenshot shows the ESA-STAR registration portal. At the top left is the ESA logo and the text "esa-star registration". Below this is a navigation bar with the date "16 Apr 2020" and links for "ESA Home Page", "EMITS", "ESA Industry Portal", "Contact Us", and "Help". A sidebar on the left contains links for "Home", "New Registration", "Maintain Entity Information", and "ESA Entities Directory". The main content area is titled "NEW REGISTRATION" and contains a question: "Please select one of the two options:*". Below this are two radio button options: "A. I am an Entity that has the capacity as 'legal entity'" and "B. I am a Business Unit acting on behalf of a 'legal entity', without being entitled to commit on contracts on my own".

- For more information, please visit :
business.esa.int

THANK YOU!

Beatrice Barresi

Beatrice.Barresi@esa.int

Roberta Mugellesi

Roberta.Mugellesi.Dow@ext.esa.int

ESA UNCLASSIFIED



OPEN QUESTION & ANSWER SESSION

