

# Colorado Bees

## Halictidae Family: Sweat Bees



Metallic Green Bee (F)  
(*Agapostemon coloradinus*  
or *virescens*)



Metallic Green Bee (F)  
(*Agapostemon angelicus* or *texanus*)



Metallic Green Bee  
(*Agapostemon* sp.)



Green Sweat Bee  
(*Augochlorini* tribe)



Green Sweat Bee  
(*Augochlorella* sp.)



Green Sweat Bee  
(*Augochlorini* tribe)



Sweat Bee  
(*Halictus* sp.)



Sweat Bee (M)  
(*Halictus confusus arapahonum*)



Sweat Bee (F)  
(*Halictus ligatus*)



Sweat Bee (M)  
(*Halictus rubicundus*)



Sweat Bee (*Halictus* sp.)



Sweat Bee  
(*Sphecodes* sp.)

## Colorado Bees Halictidae Family: Sweat Bees

2



Sweat Bee (*Lasioglossum* sp.)



Sweat Bee (M)  
(*Lasioglossum semicaeruleum*)



Sweat Bee  
(*Lasioglossum* sp.)

**Colletidae  
Family:  
Plasterer and  
Masked Bees**  
→



Cellophane Bee (*Colletes* sp.)

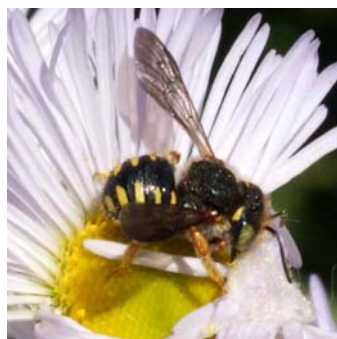


Masked Bee (*Hylaeus* sp.)

## Colorado Bees - Megachilidae Family: Leaf-Cutter, Mason Bees and Allies



Wool Carder Bee  
(*Anthidium manicatum*)



Wool Carder Bee  
(*Anthidium oblongatum*)



Leaf Cutter Bee (M)  
(*Megachile frugida*)



Leaf Cutter Bee (M)  
(*Megachile* sg *Chelostomoides*)



Leaf Cutter Bee (F)  
(*Megachile parallela*)



Leaf Cutter Bee (M)  
(*Megachile* sp.)



# Colorado Bees - Megachilidae Family: Leafcutter, Mason Bees and Allies

3



Leaf Cutter Bee (F)  
(*Megachile montivaga*)



Leaf Cutter Bee  
(*Megachile* sp.)



Leaf Cutter Bee  
(*Megachile perihirta*)



Leaf Cutter Bee  
(*Megachile* sg *Xanthosarus*)



Leaf Cutter Bee (M)  
(*Megachile* sg *Xanthosarus*)



Leaf Cutter Bee  
(*Lithurgus apicalis*)



Cuckoo Bee (*Coelioxys* sp.)



Resin Bee (*Dianthidium* sp.)



Mason Bee  
(*Hoplitis fulgida*)



Mason Bee (*Hoplitis* sp.)



Mason Bee (*Osmia* sp.)



Cuckoo Bee (*Stelis* sp.)



# Colorado Bees

## Apidae Family: Honey, Bumble, Cuckoo, Digger and Carpenter Bees

4



Honey Bee  
(*Apis mellifera*)



Small Carpenter Bee  
(*Ceratina* sp.)



Long-Horned Bee (M)  
(*Melissodes* sp.)



Black Long-Horned Bee (M)  
(*Melissodes bimaculata*)



Long-Horned Bee (F)  
(*Melissodes* sp.)



Long-Horned Bee (M)  
(*Svastra* sp.)



Long-Horned Bee (F)  
(*Svastra* sp.)



Cuckoo Bee  
(*Xeromelecta interrupta*)



Squash Bee  
(*Peponapis pruinosa*)



Cactus Bee  
(*Diadasia* sp.)



Globemallow Bee  
(*Diadasia* sp.)



Digger Bee  
(*Anthophora* sp.)



**Colorado Bees**  
**Apidae Family: Honey, Bumble, Cuckoo,**  
**Digger and Carpenter Bees**

5



Cuckoo Bee  
(*Nomada* sp.)



Cuckoo Bee  
(*Triepeolus* sp.)



Bumble Bee  
(*Bombus appositus*)



Bumble Bee  
(*Bombus centralis*)



Golden Northern Bumble Bee  
(*Bombus fervidus*)



Southern Plains Bumble Bee  
(*Bombus fraternus*)



Brown Belted Bumble Bee  
(*Bombus griseocollis*)



Black & Gold Bumble Bee  
(*Bombus nevadensis*)



Hunt's Bumble Bee  
(*Bombus huntii*)



Western Bumble Bee  
(*Bombus occidentalis*)



American Bumble Bee  
(*Bombus pensylvanicus*)



Mountain Bumble Bee  
(*Bombus sylvicola*)

# Colorado Bees

## Andrenidae Family: Mining Bees

6



Black Mining Bee  
(*Andrena* sp.)



Mining Bee with red abdomen  
(*Andrena* sp.)



Mining Bee with red abdomen  
(*Andrena* sp.)



Mining Bee (M)  
(*Andrena* sg *Callandrena*)



Mining Bee (F)  
(*Andrena helianthi*)



Mining Bee  
(*Andrena* sg *Cnemidandrena*)



Mining Bee (F)  
(*Andrena* sp.)



Mining Bee  
(*Perdita* sp.)



Mining Bee  
(*Perdita* sg *Cockerellia*)



Mining Bee  
(*Pseudopanurgus* sp.)

A close up of the head of *Andrena* showing the grooves on the inside of the eyes. This is a distinctive trait for this genus.

