

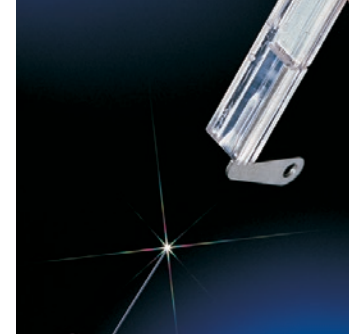
Fiber Optic Cabling

Splicing Products

AMP CORELINK Mechanical Splice

Mechanical Quick Termination

The CORELINK splice is easy to use, high performance mechanical splice for 125 μm singlemode and multimode fibers. Its unique clamping mechanism is activated with a simple key, no other tool is required. The splice is remateable - either fiber can be removed and replaced in the splice at any time.



FEATURES

- No fusion splice necessary
- Torsion resistant
- Bellcore TR-765 tested
- For multimode and singlemode
- For tight buffer, semi-tight and loose tube
- For 250 μm coating and 900 μm buffer
- Cleaning Tools
- Light Crimp Universal Cleave Tool
- Fiber Optic Cleave Tool for Field Installations

TECHNICAL DATA:

Singlemode

- Color: transparent
- Attenuation typical (dB): ≤ 0.3
- Return loss typical (dB): -35 dB (min)
- Application: SM
- Temperature range: -10°C to +60°C
- Dimensions: 51 x 7.6 x 3.3 mm

Multimode

- Color: transparent blue
- Attenuation typical (dB): ≤ 0.3
- Return loss typical (dB): -20 dB (min)
- Application: MM
- Temperature range: -10°C to +60°C
- Dimensions: 51 x 7.6 x 3.3 mm

CORELINK Splices

FEATURES

- Mechanical splice
- Re-usable



ORDERING INFORMATION

| Description | Part Number |
|---|-------------|
| 12 CORELINK Splices for single- and multimode | 503577-1 |
| 2 Replacement keys in key holder | 503681-1 |

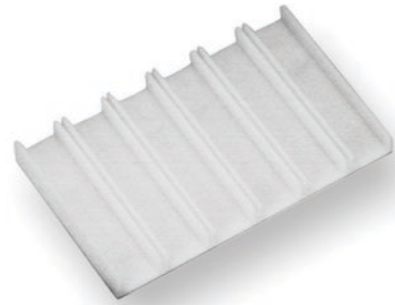
Fiber Optic Cabling

Splicing Products

Splice Holder for CORELINK Splices

FEATURES

- 31.8 x 61.0 mm Elastomer holder for 6 or 12 CORELINK splices
- For mount in splice boxes or in distribution boxes



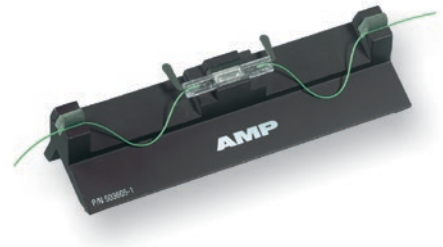
ORDERING INFORMATION

| Description | Part Number |
|---------------------------------------|-------------|
| Splice holder for 6 CORELINK splices | 559066-1 |
| Splice holder for 12 CORELINK splices | 559087-1 |

Workstation for CORELINK Splices

FEATURES

- For easy and safe installation of the CORELINK splices



ORDERING INFORMATION

| Description | Part Number |
|----------------------|-------------|
| CORELINK Cleave tool | 1871696-1 |
| CORELINK Workstation | 503605-1 |