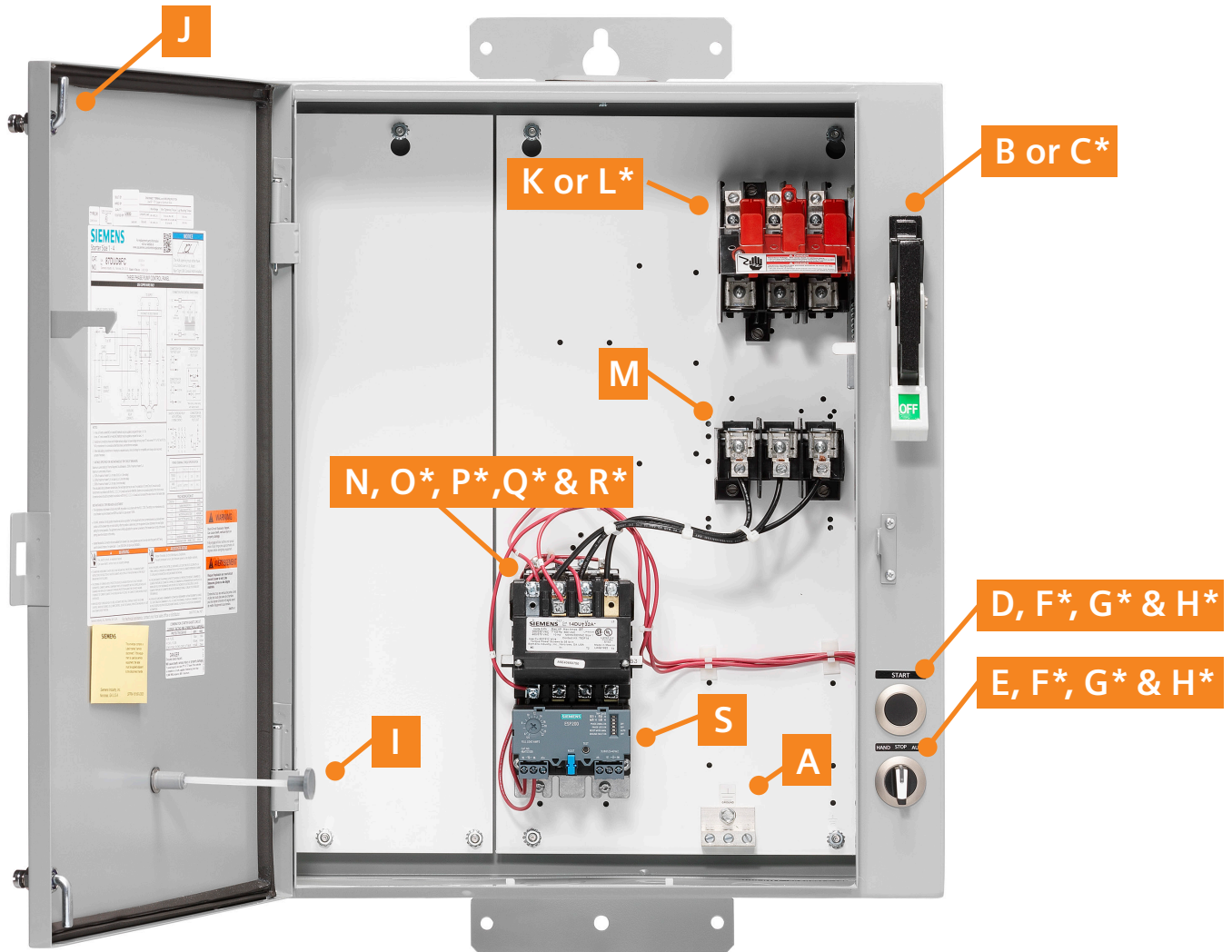


⚠ WARNING
Hazardous voltage.
Can cause death or serious injury.

Disconnect main power and control voltages before installation or maintenance on this equipment.

IMPORTANT

THESE INSTRUCTIONS DO NOT PURPORT TO COVER ALL DETAILS OR VARIATIONS IN EQUIPMENT, NOR TO PROVIDE FOR EVERY POSSIBLE CONTINGENCY TO BE MET IN CONNECTION WITH INSTALLATION, OPERATION OR MAINTENANCE. SHOULD FURTHER INFORMATION BE DESIRED OR SHOULD PARTICULAR PROBLEMS ARISE WHICH ARE NOT COVERED SUFFICIENTLY FOR THE PURCHASER'S PURPOSES, THE MATTER SHOULD BE REFERRED TO THE LOCAL SIEMENS SALES OFFICE. THE CONTENTS OF THIS INSTRUCTION MANUAL SHALL NOT BECOME PART OF OR MODIFY ANY PRIOR OR EXISTING AGREEMENT, COMMITMENT OR RELATIONSHIP. THE SALES CONTRACT CONTAINS THE ENTIRE OBLIGATION OF SIEMENS. THE WARRANTY CONTAINED IN THE CONTRACT BETWEEN PARTIES IS THE SOLE WARRANTY OF SIEMENS. ANY STATEMENTS CONTAINED HEREIN DO NOT CREATE NEW WARRANTIES OR MODIFY THE EXISTING WARRANTY.



NOTE: Image is representative and may not depict the actual product.
* Not shown.

B – Disconnect handle assembly only



Pump Controller	Replacement Part
3RE48020GJ*64FA0	75D73944015
3RE48020GK*64FA0	75D73944015
3RE48020GL*64FA0	75D73944015
3RE48020GM*64FA0	75D73944015
3RE48120GM*64FA0	75D73944025
87FUF60*	75D73944015
87FUF6F*	75D73944015
87FUF6L*	75D73944015
87FUF6M*	75D73944025
87FUF6P*	75D73944015
87GUG60*	75D73944015
87GUG6F*	75D73944015
87GUG6L*	75D73944015
87GUG6M*	75D73944025
87GUG6P*	75D73944015

C – Disconnect handle assembly and disconnect mechanism



Pump Controller	Replacement Part
3RE48020GJ*64FA0	75D68257103
3RE48020GK*64FA0	75D68257103
3RE48020GL*64FA0	75D68257103
3RE48020GM*64FA0	75D68257103
3RE48120GM*64FA0	75D68257074
87FUF60*	75D68257103
87FUF6F*	75D68257103
87FUF6L*	75D68257103
87FUF6M*	75D68257080
87FUF6P*	75D68257103
87GUG60*	75D68257103
87GUG6F*	75D68257103
87GUG6L*	75D68257103
87GUG6M*	75D68257080
87GUG6P*	75D68257103

A – Ground bar

Replacement part 75R500584A00
(Applies to all pump controllers.)



D – Start push button actuator

Replacement part 3SU10600JB100AA0
(Applies to all pump controllers.)



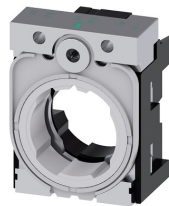
E – HOA selector switch actuator

Replacement part 3SU10622DL600AA0
(Applies to all pump controllers.)



F – Module holder for selector switch and push button

Replacement part 3SU15500AA100AA0
(Applies to all pump controllers.)



G – N.O. contact module for selector

Replacement part 3SU14001AA101BA0
(Applies to all pump controllers.)



H – Contact module plate for selector switch and push button

Replacement part 3SU19000AY610AA0
(Applies to all pump controllers.)



I – Overload relay reset operator

Replacement part 49MARB
(Applies to all pump controllers.)



J – Enclosure quarter-turn latch

Replacement part 75D46260004
(Applies to all pump controllers.)

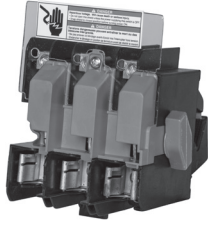


Notes:

Images are representative and may not depict the actual part.

The character placeholder (*) found in each pump controller and contactor catalog number represent the coil voltage code.

K – Switch block assembly with fuse clips



Pump Controller	Replacement Part
3RE48020GJ*64FA0	HBB22
3RE48020GK*64FA0	HBB62
3RE48020GL*64FA0	HBB63
3RE48020GM*64FA0	HBB63
3RE48120GM*64FA0	NA
87FUF60*	HFB63
87FUF6F*	HFB62
87FUF6L*	HFB22
87FUF6M*	NA
87FUF6P*	HFB63
87GUG60*	HFB63
87GUG6F*	HFB62
87GUG6L*	HFB22
87GUG6M*	NA
87GUG6P*	HFB63

L – Motor circuit protector



Pump Controller	Replacement Part
3RE48020GJ*64FA0	NA
3RE48020GK*64FA0	NA
3RE48020GL*64FA0	NA
3RE48020GM*64FA0	NA
3RE48120GM*64FA0	ED63A050
87FUF60*	NA
87FUF6F*	NA
87FUF6L*	NA
87FUF6M*	ED63A050
87FUF6P*	NA
87GUG60*	NA
87GUG6F*	NA
87GUG6L*	NA
87GUG6M*	ED63A100
87GUG6P*	NA

M – Load base assembly



Pump Controller	Replacement Part
3RE48020GJ*64FA0	HFB22
3RE48020GK*64FA0	HFB62
3RE48020GL*64FA0	HFB63
3RE48020GM*64FA0	HFB63
3RE48120GM*64FA0	NA
87FUF60*	HBB63
87FUF6F*	HBB62
87FUF6L*	HBB22
87FUF6M*	NA
87FUF6P*	HBB63
87GUG60*	HBB63
87GUG6F*	HBB62
87GUG6L*	HBB22
87GUG6M*	NA
87GUG6P*	HBB63

N – Contactor (Class 87 only)



Pump Controller	Replacement Part
87FUF60*	40FP32A*
87FUF6F*	40FP32A*
87FUF6L*	40FP32A*
87FUF6M*	40FP32A*
87FUF6P*	40FP32A*
87GUG60*	40GP32A*
87GUG6F*	40GP32A*
87GUG6L*	40GP32A*
87GUG6M*	40GP32A*
87GUG6P*	40GP32A*

The contactor catalog number as shown is incomplete. To complete it, replace the (*) in the contactor catalog number with the character located in the (*) character position of the pump controller. For example, the replacement contactor for pump controller 87FUF6FC is 40FP32AC.

N – Contactor (3RE48 only)



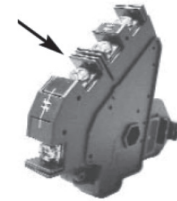
Pump Controller	Replacement Part
3RE48020GJ*64FA0	3RT20361A##00UA0
3RE48020GK*64FA0	3RT20361A##00UA0
3RE48020GL*64FA0	3RT20361A##00UA0
3RE48020GM*64FA0	3RT20361A##00UA0
3RE48120GM*64FA0	3RT20361A##00UA0

The contactor catalog number as shown is incomplete. To complete it, replace the (##) in the contactor catalog number with the (##) characters that correspond to the (*) number of the pump controller per the table below. For example, the replacement contactor for pump controller 3RE48020GJ364FA0 is 3RT20361AK600UA0.

(*)	(##)
3	K6
4	M2
5	P6
7	V6
8	T6

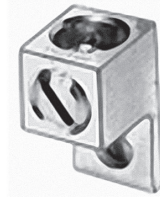
O – 1 NO internal auxiliary contact (Class 87 only)

Replacement part 49AB10



P – Contactor lug kit (Class 87 only)

Replacement part 49SAAF (three lugs per kit)

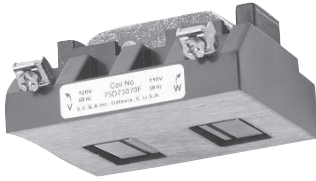


Notes:

Images are representative and may not depict the actual part.

The character placeholder (*) found in each pump controller and contactor catalog number represent the coil voltage code.

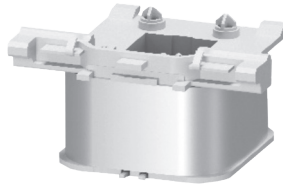
**Q – Contactor coil
(Class 87 only)**



Coil Code (*)	Volts AC 60 Hz	Replacement Part
J	24	75D73070J
F	120	75D73070F
A	110–120/220–240	75D73070A
D	208	75D73070D
G	220–240	75D73070G
L	277	75D73070L
C	220–240/440–480	75D73070C
H	440–480	75D73070H
E	575–600	75D73070E

The contactor coil voltage code is located in the (*) character position of the pump controller. For example, the replacement contactor coil for pump controller 87FUF6FC is 75D73070C.

**Q – Contactor coil
(3RE48 only)**



Coil Code (*)	Volts AC 60 Hz	Replacement Part
3	120	3RT29345AK61
4	208	3RT29345AN61
5	220–240	3RT29345AP61
7	440–480	3RT29345AV61
8	575–600	3RT29345AT61

The contactor coil voltage code is located in the (*) character position of the pump controller. For example, the replacement contactor coil for pump controller 3RE48020GG364FA0 is 3RT29345AK61.

**R – Contactor main contacts
Class 87 only
(one kit per pole)**



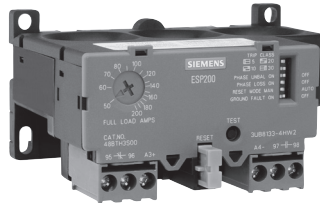
Pump Controller	Replacement Part
87FUF60*	75FF14
87FUF6F*	75FF14
87FUF6L*	75FF14
87FUF6M*	75FF14
87FUF6P*	75FF14
87GUG60*	75GF14
87GUG6F*	75GF14
87GUG6L*	75GF14
87GUG6M*	75GF14
87GUG6P*	75GF14

**R – Contactor main contacts
(3RE48 only)
(one kit for 3 poles)**



Pump Controller	Replacement Part
3RE48020GJ*64FA0	3RT2936-6A
3RE48020GK*64FA0	3RT2936-6A
3RE48020GL*64FA0	3RT2936-6A
3RE48020GM*64FA0	3RT2936-6A
3RE48120GM*64FA0	3RT2936-6A

S – Overload relay



Pump Controller	Replacement Part
3RE48020GJ*64FA0	3UB81334FW2
3RE48020GK*64FA0	3UB81334FW2
3RE48020GL*64FA0	3UB81334FW2
3RE48020GM*64FA0	3UB81334FW2
3RE48120GM*64FA0	3UB81334FW2
87FUF60*	3UB81334FW2
87FUF6F*	3UB81334FW2
87FUF6L*	3UB81334FW2
87FUF6M*	3UB81334FW2
87FUF6P*	3UB81334FW2
87GUG60*	3UB81334GW2
87GUG6F*	3UB81334GW2
87GUG6L*	3UB81334GW2
87GUG6M*	3UB81334GW2
87GUG6P*	3UB81334GW2

Notes:

Images are representative and may not depict the actual part.

The character placeholder (*) found in each pump controller and contactor catalog number represent the coil voltage code.