

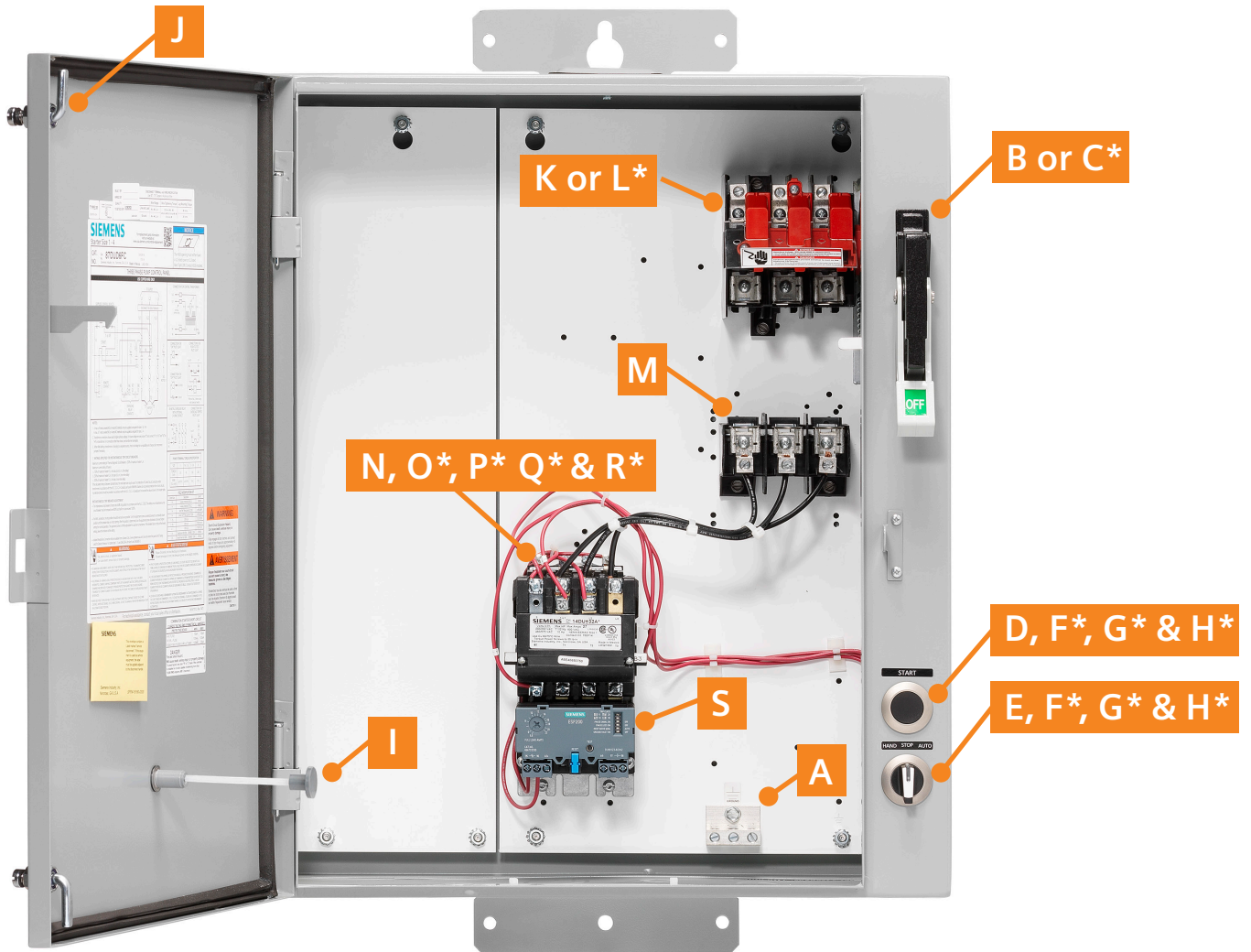
**⚠ WARNING**

**Hazardous voltage.  
Can cause death or serious injury.**

Disconnect main power and control voltages before installation or maintenance on this equipment.

**IMPORTANT**

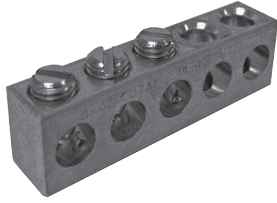
THESE INSTRUCTIONS DO NOT PURPORT TO COVER ALL DETAILS OR VARIATIONS IN EQUIPMENT, NOR TO PROVIDE FOR EVERY POSSIBLE CONTINGENCY TO BE MET IN CONNECTION WITH INSTALLATION, OPERATION OR MAINTENANCE. SHOULD FURTHER INFORMATION BE DESIRED OR SHOULD PARTICULAR PROBLEMS ARISE WHICH ARE NOT COVERED SUFFICIENTLY FOR THE PURCHASER'S PURPOSES, THE MATTER SHOULD BE REFERRED TO THE LOCAL SIEMENS SALES OFFICE. THE CONTENTS OF THIS INSTRUCTION MANUAL SHALL NOT BECOME PART OF OR MODIFY ANY PRIOR OR EXISTING AGREEMENT, COMMITMENT OR RELATIONSHIP. THE SALES CONTRACT CONTAINS THE ENTIRE OBLIGATION OF SIEMENS. THE WARRANTY CONTAINED IN THE CONTRACT BETWEEN PARTIES IS THE SOLE WARRANTY OF SIEMENS. ANY STATEMENTS CONTAINED HEREIN DO NOT CREATE NEW WARRANTIES OR MODIFY THE EXISTING WARRANTY.



NOTE: Image is representative and may not depict the actual product.  
\* Not shown.

**A – Ground bar**

Replacement part 75R500584A00  
(Applies to all pump controllers.)



**B – Disconnect handle assembly only**



**C – Disconnect handle assembly and disconnect mechanism**



**D – Start push button actuator**

Replacement part 3SU10600JB100AA0  
(Applies to all pump controllers.)



Pump Controller	Replacement Part
3RE48030GL*64GA0	75D73944015
3RE48030GM*64GA0	75D73944015
3RE48030GN*64GA0	75D73944023
3RE48030GP*64GA0	75D73944023
3RE48130GN*64GA0	75D73944025
87HUG60*	75D73944023
87HUG6F*	75D73944015
87HUG6L*	75D73944015
87HUG6M*	75D73944025
87HUG6P*	75D73944023
87IUH6F*	75D73944023
87IUH6L*	75D73944023
87IUH6M*	75D73944025

Pump Controller	Replacement Part
3RE48030GL*64GA0	75D68257103
3RE48030GM*64GA0	75D68257103
3RE48030GN*64GA0	75D68257068
3RE48030GP*64GA0	75D68257068
3RE48130GN*64GA0	75D68257074
87HUG60*	75D68257068
87HUG6F*	75D68257103
87HUG6L*	75D68257103
87HUG6M*	75D68257080
87HUG6P*	75D68257068
87IUH6F*	75D68257068
87IUH6L*	75D68257068
87IUH6M*	75D68257080

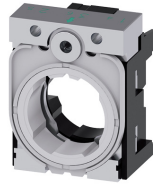
**E – HOA selector switch actuator**

Replacement part 3SU10622DL600AA0  
(Applies to all pump controllers.)



**F – Module holder for selector**

Replacement part 3SU15500AA100AA0  
(Applies to all pump controllers.)



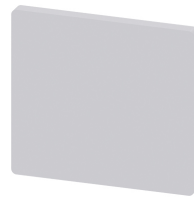
**G – N.O. contact module for selector**

Replacement part 3SU14001AA101BA0  
(Applies to all pump controllers.)



**H – Contact module plate for**

Replacement part 3SU19000AY610AA0  
(Applies to all pump controllers.)



**I – Overload relay reset operator**

Replacement part 49MARB  
(Applies to all pump controllers.)



Notes:

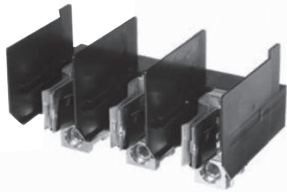
Images are representative and may not depict the actual part.

The character placeholder (\*) found in each pump controller and contactor catalog number represent the coil voltage code.

**J – Enclosure quarter-turn latch**  
Replacement part 75D46260004  
(Applies to all pump controllers.)

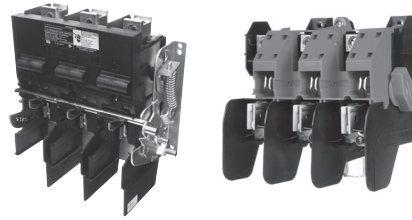


**M – Load base assembly**



Pump Controller	Replacement Part
3RE48030GL*64GA0	HFB63
3RE48030GM*64GA0	HFB63
3RE48030GN*64GA0	FCK620
3RE48030GP*64GA0	FCK620
3RE48130GN*64GA0	NA
87HUG60*	FCK620
87HUG6F*	HBB63
87HUG6L*	FCK620
87HUG6M*	NA
87HUG6P*	FCK620
87IUH6F*	FCK620
87IUH6L*	FCK620
87IUH6M*	NA

**K – Switch block assembly with fuse clips**



Pump Controller	Replacement Part
3RE48030GL*64GA0	HBB63
3RE48030GM*64GA0	HBB63
3RE48030GN*64GA0	MCS620R
3RE48030GP*64GA0	MCS620R
3RE48130GN*64GA0	NA
87HUG60*	MCS620R
87HUG6F*	HFB63
87HUG6L*	MCS620R
87HUG6M*	NA
87HUG6P*	MCS620R
87IUH6F*	MCS620R
87IUH6L*	MCS620R
87IUH6M*	NA

**L – Motor circuit protector**



Pump Controller	Replacement Part
3RE48030GL*64GA0	NA
3RE48030GM*64GA0	NA
3RE48030GN*64GA0	NA
3RE48030GP*64GA0	NA
3RE48130GN*64GA0	ED63A100
87HUG60*	NA
87HUG6F*	NA
87HUG6L*	NA
87HUG6M*	ED63A100
87HUG6P*	NA
87IUH6F*	NA
87IUH6L*	NA
87IUH6M*	ED63A125

**N – Contactor (Class 87 only)**



Pump Controller	Replacement Part
87HUG60*	40HP32A*
87HUG6F*	40HP32A*
87HUG6L*	40HP32A*
87HUG6M*	40HP32A*
87HUG6P*	40HP32A*
87IUH6F*	40IP32A*
87IUH6L*	40IP32A*
87IUH6M*	40IP32A*

The contactor catalog number as shown is incomplete. To complete it, replace the (\*) in the contactor catalog number with the character located in the (\*) character position of the pump controller. For example, the replacement contactor for pump controller 87HUG6FC is 40HP32AC.

**N – Contactor (3RE48 only)**



Pump Controller	Replacement Part
3RE48030GL*64GA0	3RT20461A##00UA0
3RE48030GM*64GA0	3RT20461A##00UA0
3RE48030GN*64GA0	3RT20461A##00UA0
3RE48030GP*64GA0	3RT20461A##00UA0
3RE48130GN*64GA0	3RT20461A##00UA0

The contactor catalog number as shown is incomplete. To complete it, replace the (##) in the contactor catalog number with the (##) characters that correspond to the (\*) number of the pump controller per the table below. For example, the replacement contactor for pump controller 3RE48030GL364GA0 is 3RT20461AK600UA0.

(*)	(##)
3	K6
4	M2
5	P6
7	V6
8	T6

Notes:  
Images are representative and may not depict the actual part.

The character placeholder (\*) found in each pump controller and contactor catalog number represent the coil voltage code.

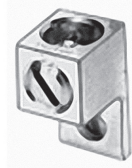
**O – 1 NO internal auxiliary contact  
(Class 87 only)**

Replacement part 49AB10

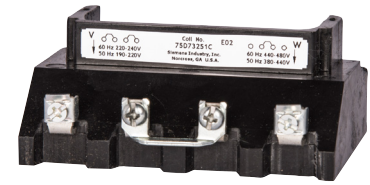


**P - Contactor lug kit  
(Class 87 only)**

Replacement part 49SAAH  
(three lugs per kit)



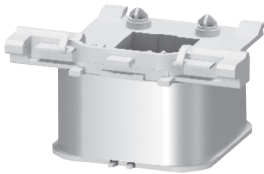
**Q – Contactor coil  
(Class 87 only)**



Coil Code (*)	Volts AC 60 Hz	Replacement Part
J	24	75D73251J
F	120	75D73251F
A	110–120/220–240	75D73251A
D	208	75D73251D
G	220–240	75D73251G
L	277	75D73251L
C	220–240/440–480	75D73251C
H	440–480	75D73251H
E	575–600	75D73251E

The contactor coil voltage code is located in the (\*) character position of the pump controller. For example, the replacement contactor coil for pump controller 87HUG6FC is 75D73251C.

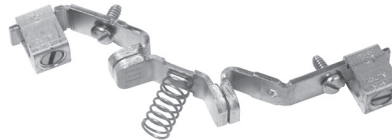
**Q – Contactor coil  
(3RE48 only)**



Coil Code (*)	Volts AC 60 Hz	Replacement Part
3	120	3RT29445AK61
4	208	3RT29445AN61
5	220–240	3RT29445AP61
7	440–480	3RT29445AV61
8	575–600	3RT29445AT61

The contactor coil voltage code is located in the (\*) character position of the pump controller. For example, the replacement contactor coil for pump controller 3RE48030GL364GA0 is 3RT29445AK61.

**R – Contactor main contacts  
Class 87 only  
(one kit per pole)**

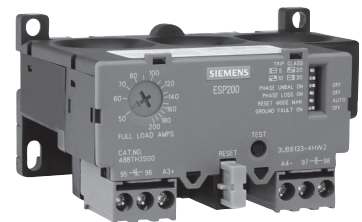


Pump Controller	Replacement Part
87HUG60*	75HF14
87HUG6F*	75HF14
87HUG6L*	75HF14
87HUG6M*	75HF14
87HUG6P*	75HF14
87IUH6F*	75IF14
87IUH6L*	75IF14
87IUH6M*	75IF14

**R – Contactor main contacts  
3RE48 only  
Replacement part 3RT2946-6A  
(one kit for 3 poles)**



**S – Overload relay**



Pump Controller	Replacement Part
3RE48030GL*64GA0	3UB81334GW2
3RE48030GM*64GA0	3UB81334GW2
3RE48030GN*64GA0	3UB81334GW2
3RE48030GP*64GA0	3UB81334GW2
3RE48130GN*64GA0	3UB81334GW2
87HUG60*	3UB81334GW2
87HUG6F*	3UB81334GW2
87HUG6L*	3UB81334GW2
87HUG6M*	3UB81334GW2
87HUG6P*	3UB81334GW2
87IUH6F*	3UB81334HW2
87IUH6L*	3UB81334HW2
87IUH6M*	3UB81334HW2

**Notes:**

Images are representative and may not depict the actual part.

The character placeholder (\*) found in each pump controller and contactor catalog number represent the coil voltage code.