

Document Version: 1.4 – 2016-08-15

Getting Started with "SAP S/4HANA, on-premise edition 1511 (FPS01): Fully Activated Appliance" on SAP Cloud Appliance Library



Table of Contents

1	Introduction	3
1.1	About the Solution - Technical Components	3
1.2	Technical Components in Detail	3
1.3	Operating system & platform users.....	3
1.4	About the Solution - Business Content	6
1.5	Security Aspects.....	7
1.6	Solution Usage and Licenses.....	8
1.6.1	SAP Free Trial License Agreement.....	8
1.6.2	SAP Product License Agreement	8
2	Solution Provisioning in SAP Cloud Appliance Library.....	10
2.1	Prerequisite: Possess a cloud provider account	10
2.2	Access SAP Cloud Appliance Library (SAP CAL)	10
2.3	Create your system instance within the SAP CAL console	10
3	Connecting to Your Solution	12
3.1	Option 1: System access via embedded Windows Remote Desktop frontend server	12
3.2	Option 2: System access via local PC	13
3.2.1	Mapping local /etc/hosts file.....	13
3.2.2	Configure ".*.dummy.nodomain" for Web Browser	14
3.2.3	Install SAP Client Software Locally	15
3.2.4	Connecting to SAP S4HANA / SAP HANA	16
4	Evaluate Business Content and Processes for Pre-Deployed Scenarios.....	20
4.1	Pre-configured Demo Guide	20
4.2	SAP Best Practices in general	20
4.3	Administration guide & SAP Note	20
5	Additional Information	21
5.1	Integrated SAP S/4HANA User Assistance	21
5.2	Embedded feedback function	23
5.3	Calling a web-based ABAP Transaction	24
6	Appendix.....	28
6.1	Installed Technical Component Details	28
6.1.1	SAP NetWeaver 7.50 application server ABAP incl. SAP S/4HANA on-premise edition 1511 FPS01	28
6.1.2	SAP NetWeaver 7.50 application server JAVA with Adobe Document Services installed.....	37
6.1.3	Windows Remote Desktop	37

1 Introduction

This guide provides information about SAP S/4HANA, on-premise edition 1511 feature package stack (FPS) 01 - Fully Activated Landscape on SAP Cloud Appliance Library, and includes:

- Technical components and business content within the solution.
- System access information after you create your own solution instance.
- Evaluation of business content.

This guide focuses on system landscape aspects as well as the steps to get the appliance initially available in SAP Cloud Appliance Library.

A general introduction into the appliance and the usage as trial or sandbox system for SAP S/4HANA can be found on <http://scn.sap.com/docs/DOC-71746>.

More detailed information sources are also mentioned in chapter 4 of this guide.

1.1 About the Solution - Technical Components

In SAP Cloud Appliance Library (SAP CAL), the SAP S/4HANA, on-premise edition 1511 FPS01 - Fully Activated Landscape on SAP Cloud Appliance Library consists of three virtual machines that are bundled into one solution:

1. SAP NetWeaver 7.50 application server ABAP incl. SAP S/4HANA on-premise edition 1511 FPS01
2. SAP NetWeaver 7.50 application server JAVA with installed Adobe Document Services.
3. Microsoft Windows Server 2008 (as remote desktop / Windows Terminal Server) for easy frontend access.

1.2 Technical Components in Detail

Refer to the Appendix for details about technical software components included in this solution.

1.3 Operating system & platform users

If you need OS access, you must use SSH connectivity.

Use the default user root and the private key for the instance that can be downloaded while the SAP Cloud Appliance Library activates your landscaped instance.

Information how to connect using PuTTY can be found [here](#).

The root user on Linux operating system level is defined as follows:

Parameter ID	Parameter Value	Note
OS User Name	root	The default OS Administrator user for Linux SUSE.
OS Password	<none>	Use the private key in SSH tools

The administration users for HANA and ABAP on operating system level are defined as follows:

Parameter ID	Parameter Value	Note
HANA administrator name	HDBADM	Additional user for HANA lifecycle management – start/stop, administration, functions, recovery.
HANA administrator password	<Master Password>	The password is the same as the master password provided during instance creation in the SAP Cloud Appliance Library.
HANA SYSTEM user name	SYSTEM	
HANA SYSTEM user password	<Master Password>	The password is the same as the master password provided during instance creation in the SAP Cloud Appliance Library.
ABAP administrator name	s4hadm	Additional user for ABAP lifecycle management – start/stop, administration, functions, recovery.
ABAP administrator password	<Master Password>	The password is the same as the master password provided during instance creation in the SAP Cloud Appliance Library.
SAP Web Dispatcher administrator name (default)	admin	
SAP Web Dispatcher administrator password (default)	Welcome1	

The administration users for ASE and JAVA on operating system level are defined as follows:

Parameter ID	Parameter Value	Note
ASE administrator name	sybadm	Additional user for ASE lifecycle management – start/stop, administration, functions, recovery.
ASE administrator password	<Master Password>	The password is the same as the master password provided during instance creation in the SAP Cloud Appliance Library.
JAVA administrator name	Administrator	Additional user for JAVA lifecycle management – start/stop, administration, functions, recovery.
JAVA administrator password	<Master Password>	The password is the same as the master password provided during instance creation in the SAP Cloud Appliance Library.

The administration users for MS Windows Remote Desktop are defined as follows:

Parameter ID	Parameter Value	Note
Administrator name	Administrator	Administration user (depending on your domain setup, you might need to use .\Administrator)
Administrator password	<Master Password>	The password is the same as the master password provided during instance creation in the SAP Cloud Appliance Library.

Please note the restrictions for logging on to the remote desktop:

- Only one concurrent logon session with user Administrator is possible at the same time
- Only two concurrent users can log on to the remote desktop at the same time i.e. you will have to create another user besides Administrator if you want to log on with two users in parallel

Additional users on operating system level are listed below:

Parameter ID	Parameter Value	Note
<SID>adm User Group	sapsys	Group containing all <SID>adm users (should be a group in a central user storage like LDAP, NIS, or Active Directory)

Parameter ID	Parameter Value	Note
SAP System Administrator	daaadm	
SAP System Administrator password	<Master Password>	The password is the same as the master password provided during instance creation in the SAP Cloud Appliance Library.

1.4 About the Solution - Business Content

The SAP S/4HANA, on-premise edition - Fully Activated Landscape on SAP Cloud Appliance Library provides you with a pre-configured SAP S/4HANA, on-premise landscape, including the following business content in dedicated ABAP clients:

System	Client	Business Content
S/4HANA	000	<ul style="list-style-type: none"> None (standard customizing only)
	100	<ul style="list-style-type: none"> Pre-activated SAP Best Practices for SAP S/4HANA, on-premise edition 1511 FPS01 (Germany & US) * Customizing and transactional data in German company code (1010) SAP Fiori Apps
	200	<ul style="list-style-type: none"> Pre-activated BW content for SAP Integrated Business Planning for Finance
	300	<ul style="list-style-type: none"> Pre-activated SAP Best Practices for SAP S/4HANA, on-premise edition 1511 FPS01 (Germany & US) without transactional data SAP Fiori Apps
	400	<ul style="list-style-type: none"> Ready-to-Activate client with all pre-activation preparation activities executed.

For more information about SAP Best Practices for SAP S/4HANA, on-premise edition 1511 content, please visit: <http://service.sap.com/s4op>

For the Administrator Guide of SAP Best Practices for SAP S/4HANA, on-premise edition 1511 content, please visit: http://help.sap.com/s4hana_op_1511_001?current=s4hana → Additional Information → Administration Guide for Solution Implementation of SAP S/4HANA, on-premise edition

* Please notice the following important notes:

(1) Although the US Best Practices localization configuration is already included, it is still mandatory for you to have a valid VERTEX connection before running the processes in US company code (1710). Please refer to Administration Guide http://help.sap.com/s4hana_op_1511_001?current=s4hana → Additional Information → Administration Guide for Solution Implementation of SAP S/4HANA, on-premise edition → PREREQUISITE settings → Carrying out technical setup → Set up VERTEX integration

(2) Due to technical reasons, the following scope items of SAP Best Practices for SAP S/4HANA, On-Premise edition 1511 are not included:

- Analytical content for S/4 HANA, which requires SAP BI platform. (SAP S/4HANA embedded analytics content, such as Smart Business and analytics content are included.)
- Ariba Network integration
- Financial Services Network integration

(3) The organizational structure and chart of accounts are activated in client 100 and client 300 as SAP Best Practices content provided.

1.5 Security Aspects

By default, some ports are opened for the security group formed by the server components of your solution instance. The access from your local computer to your system instance happens via those ports (see 'Description' what port is used where).

Protocol	Port (open by default)	Description
SSH	22	Used for SSH connection to Linux-based servers (OS)
RDP	3389	Used for RDP connection to Windows based servers
SAP GUI	3200	Used for access of local SAP GUI to appliance
HTTPS	44300 & 44301	Used for access of a local web browser to appliance (Fiori Launchpad of SAP S/4HANA)
HTTP	50000	Used for access of a local web browser to the SAP NetWeaver Administrator / JAVA admin console

Specifically for the access via HANA Studio and/or ABAP Development tools, the following ports need to be opened manually in the instance details *in addition to the already open ports*.

Protocol	Port (closed by default)	Description
Custom TCP	30215	Used for connection of SAP HANA Studio to HANA DB
Custom TCP	3300	Used for connection of ABAP Development Tools (Eclipse-based) to SAP S/4HANA ABAP repository

You can add/edit these ports manually in the instance details (click on the instance link in the CAL console → Edit → Virtual Machine → Access Points → Add).

Be sure to choose the virtual machine 'SAP NetWeaver 7.50 AS ABAP incl. SAP S/4HANA' since both SAP HANA and SAP S/4HANA run on this machine.

Access Points

Add

Virtual Machine	Service	Port Range	IP Range	Type	Enabled	
SAP NetWeaver 7.50 AS ABAP Inr	Custom TCP	30215	0.0.0.0/0	Custom	<input checked="" type="checkbox"/>	Delete
SAP NetWeaver 7.50 AS ABAP Inr	Custom TCP	3300	0.0.0.0/0	Custom	<input checked="" type="checkbox"/>	Delete

Be aware that creating your instances in the public zone of your cloud computing platform is convenient, but less secure. We recommend that in this case, you only open port 22 (SSH) when working with Linux-based solutions, and port 3389 (RDP) when working with Windows based solutions if your business requirements allow for this.

In addition, we also recommend that you limit the access to your instances by defining a specific IP range in the Access Points settings, using [CIDR notation](#). The more complex but secure alternative is to set up a virtual private cloud (VPC) with VPN access, which is described in [this tutorial on SCN](#).

Note that when using HANA-based appliances, HANA systems are not installed individually, but cloned from a template system. Consequently, the existing root keys are cloned. For more information, see this [SAP Note 2134846 - HANA encryption key handling during system cloning](#).

General Security Guidelines

To access the latest version of the SAP system Security Guide, please refer to https://help.sap.com/s4hana_op_1511_001?current=s4hana_op_1511 → Product Documentation → Security Guide.

1.6 Solution Usage and Licenses

1.6.1 SAP Free Trial License Agreement

You can start to use this solution within SAP CAL under an SAP Free Trial License Agreement for 30 days. The trial software is licensed, not sold. The Trial Software is licensed to you free of charge during the term of this Agreement. During this period, the system is up-and-running using a temporary SAP product license.

1.6.2 SAP Product License Agreement

For a longer period of usage, you can switch the solution usage from a SAP Free Trial License Agreement to a SAP Product License Agreement. The prerequisites are that you own the required SAP product licenses and that you purchase the SAP Cloud Appliance Library subscription package. For more information, see [Unlocking Solutions in the SAP Cloud Appliance Library](#).

1.6.2.1 SAP Product License Keys Installation

If you want to use the solution under a SAP Product License Agreement (e.g. beyond the SAP-license-free trial), you should install the following relevant SAP product license keys:

1. SAP HANA license key, to be installed via SAP HANA Studio
2. SAP S/4HANA, On-Premise 1511 license key, to be installed via SAP Logon
3. SAP NetWeaver 7.5 J2EE, to be installed via SAP NetWeaver Administrator
 - o The SAP NetWeaver J2EE engine (JAVA stack) is used as platform for the Adobe Document Services. The separate licensing of Adobe Document Services / Interactive Forms by Adobe (IFbA) is not mandatory for SAP S/4HANA, however, the following conditions apply.
 - a) The use of SAP print forms is always free of charge.
 - b) For SAP Interactive Forms, using the pre-delivered interactive forms is free of charge.
 - c) Also, if you make cosmetic changes to these forms, it is still free of charge.
 - d) However, if you make non-cosmetic changes to the forms or create new forms, you need a separate license for Adobe Document Services / IFbA

Use the link <https://launchpad.support.sap.com/#/licensekey> to apply the related license keys:

SID	Product	Version	DB	OS	Comment
HDB	SAP HANA, platform edition	SAP HANA 1.0, platform edition	n/a	Linux	Please choose 256 GB Memory Volume
S4H	SAP S/4HANA, On-Premise 1511	SAP S/4HANA, On-Premise 1511	SAP HANA	Linux	N/A
J2E	SAP NetWeaver	SAP NetWeaver 7.5	Sybase ASE	Linux	As license type, select 'J2EE - Web AS JAVA'

For more information on how to request and install product license keys, see [this SCN blog](#).

2 Solution Provisioning in SAP Cloud Appliance Library

2.1 Prerequisite: Possess a cloud provider account

You need to have a valid account in one of the cloud providers supported by SAP Cloud Appliance Library (e.g. Amazon Web Services, <http://aws.amazon.com>) including the corresponding secret keys for this account keys.

If you already have an active cloud provider account, you can proceed directly with the next section. Otherwise, navigate to the cloud provider home page and sign up.

For more information about the supported cloud providers, see the [FAQ page](#).

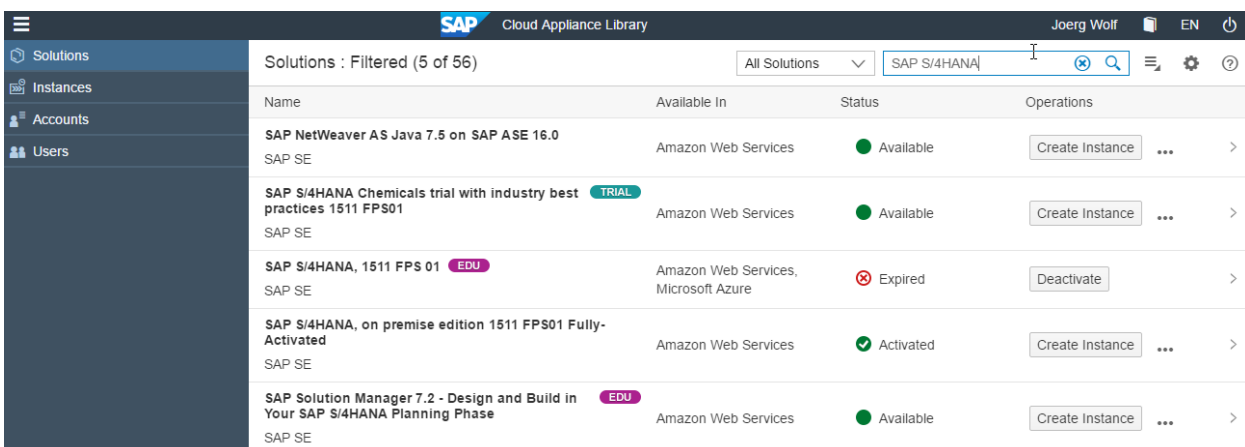
2.2 Access SAP Cloud Appliance Library (SAP CAL)

Open the SAP Cloud Appliance Library in your Web browser using the following link: <https://cal.sap.com>.

If you don't have an account in SAP CAL (this is different from the cloud provider account), please register. This will not raise any additional costs.

2.3 Create your system instance within the SAP CAL console

Once the SAP CAL console is displayed, go to *Solutions* (list of available system templates) and search for SAP S/4HANA. Click on *Create Instance* (this will become your personal system) and follow the steps on the screen.




The screenshot shows the SAP Cloud Appliance Library console interface. The top navigation bar includes the SAP logo, 'Cloud Appliance Library', and the user name 'Joerg Wolf'. The left sidebar contains navigation options: Solutions, Instances, Accounts, and Users. The main content area displays a table of solutions filtered by 'SAP S/4HANA' (5 of 56 results). The table has columns for Name, Available In, Status, and Operations. The solutions listed are:

Name	Available In	Status	Operations
SAP NetWeaver AS Java 7.5 on SAP ASE 16.0 SAP SE	Amazon Web Services	Available	Create Instance ... >
SAP S/4HANA Chemicals trial with industry best practices 1511 FPS01 SAP SE	Amazon Web Services	Available	Create Instance ... >
SAP S/4HANA, 1511 FPS 01 SAP SE	Amazon Web Services, Microsoft Azure	Expired	Deactivate >
SAP S/4HANA, on premise edition 1511 FPS01 Fully-Activated SAP SE	Amazon Web Services	Activated	Create Instance ... >
SAP Solution Manager 7.2 - Design and Build in Your SAP S/4HANA Planning Phase SAP SE	Amazon Web Services	Available	Create Instance ... >

A step-by-step guide guiding you through this procedure can be found [here](#).

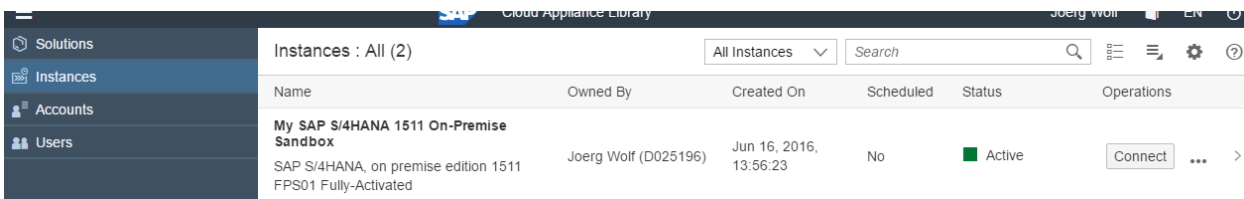
You can also jump directly to the instance creation (omitting the above console) by using this [link](#).

For general information on how to create an instance (i.e. your personal system) from any solution (i.e. a template) in the SAP Cloud Appliance Library, see the official documentation of SAP Cloud Appliance Library (choose the [Support → Documentation](#) link and select the *Expand All* button  to see all documents in the structure). You can also use the context help in SAP Cloud Appliance Library by choosing the [Help](#) panel from the right side.

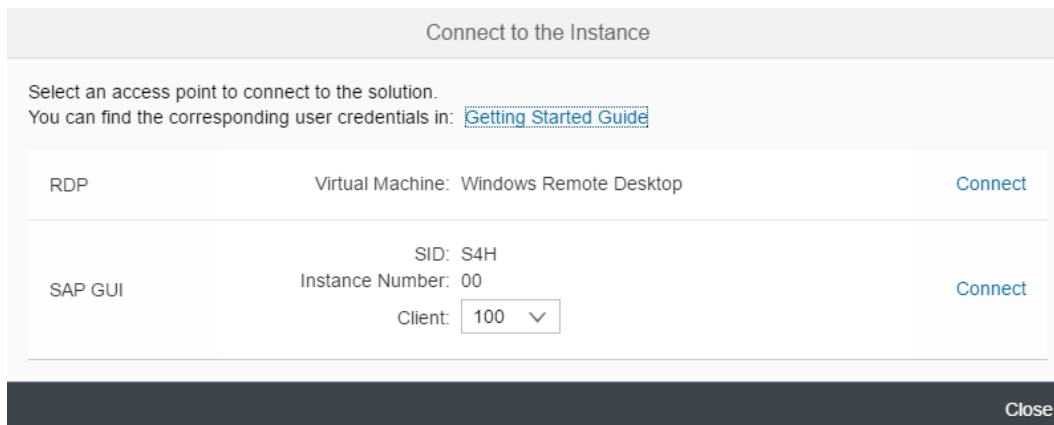
3 Connecting to Your Solution

3.1 Option 1: System access via embedded Windows Remote Desktop frontend server

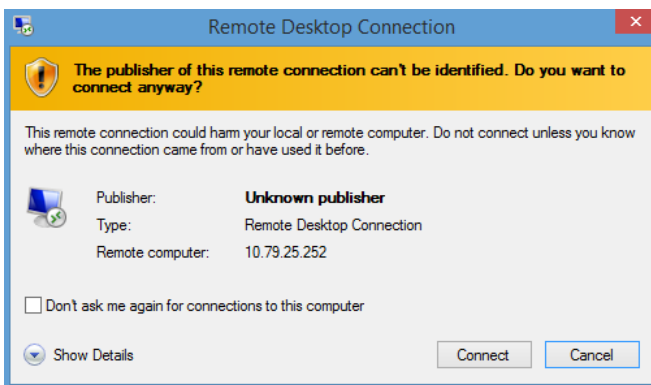
4. After your own solution instance is created (~ 45-60 minutes), click the [Connect](#) button in the Instances view of the console.



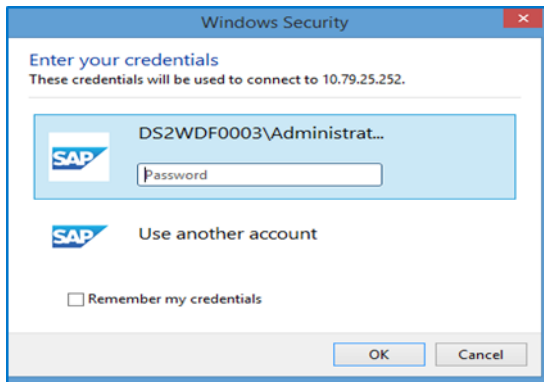
5. In the pop-up, click [Connect](#) in the RDP Virtual Machine: Windows Remote Desktop line.



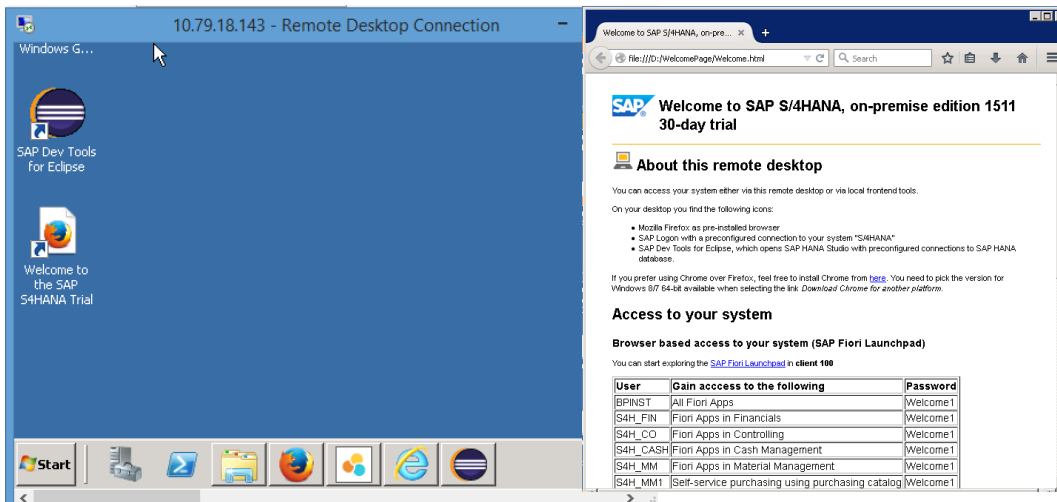
6. Confirm the pop-up window to allow Remote Desktop Connection.



7. Enter user *Administrator* and your solution master password generated during the solution instance creation.



You are now in the pre-configured Windows Frontend Server. Follow the information on the Welcome page to logon, and to run sample scenarios.



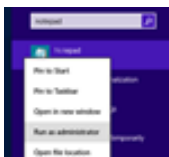
Note that the embedded Windows Frontend Server license allows 2 concurrent sessions (one for user Administrator and one for another user that you first have to create on the remote desktop).

3.2 Option 2: System access via local PC

3.2.1 Mapping local /etc/hosts file

In order to logon to web access, as for example the Fiori Launchpad from your local PC, you need to ensure that you have mapped the IP address to the Hosts file on your local PC:

1. Open *Notepad* as administrator (search for *Notepad* on your computer, right mouse click, 'Run as administrator'):



- Click *File -> Open* and enter the following path:

For Windows operating system: `c:\windows\system32\drivers\etc\hosts`

For Linux operating system: `/etc/hosts`

- Ensure to select *All Files (*.*)*
- Open the *hosts* file, enter the following lines in the hosts file (the IP addresses for the two servers are displayed in the CAL console in the instance properties):

S4H - Dev

<IP Address SAP S/4HANA / HDB server> `vhcals4hci.dummy.nodomain vhcals4hci
vhcals4hcs.dummy.nodomain vhcals4hcs vhcaldhdbd vhcaldhdbd.dummy.nodomain`

<IP Address SAP NW JAVA/ASE/ADS server> `vhcalj2eci.dummy.nodomain vhcals4hcs
vhcalj2ecs.dummy.nodomain vhcals4hcs vhcaldhdbd vhcaldhdbd.dummy.nodomain`

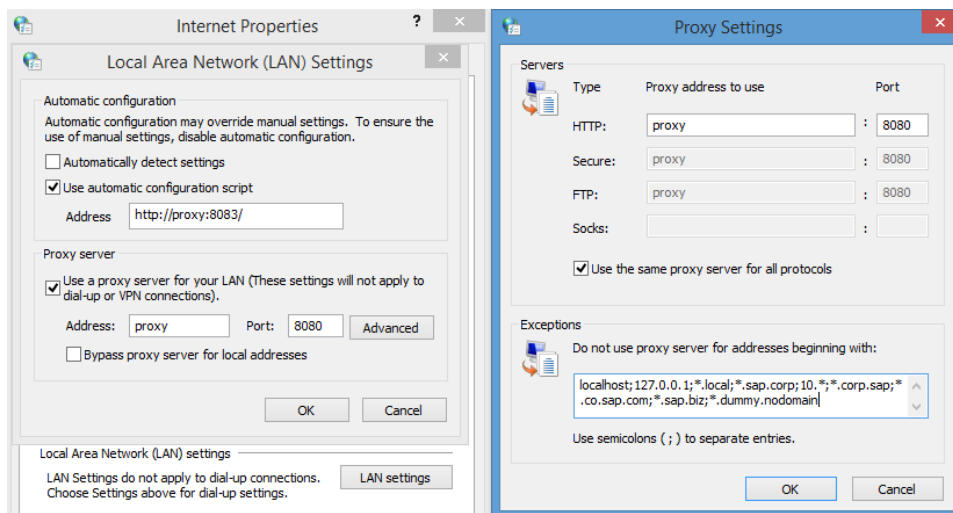
- Save the *hosts* file and exit.

3.2.2 Configure ";*.dummy.nodomain" for Web Browser

Working with the <dummy.nodomain> might require changes in your web browser, in case there is a web proxy defined (if you are unsure or detect connectivity issues, please contact your network administrator):

- If you are using Google Chrome as web browser, follow these steps:
 - Logon to *Chrome -> Settings -> Show Advanced Settings -> Network -> Change proxy settings -> LAN Settings -> Proxy Server -> Advanced*
 - In the *Exceptions*, add **;.dummy.nodomain** directly at the end of the existing entry.
 - Click OK.
- If you are using Internet Explorer as web browser, follow these steps:
 - Logon to *Internet Explorer -> Internet Options -> Connections -> LAN Settings -> Proxy Server -> Advanced*
 - In the *Exceptions*, add **;.dummy.nodomain** direct at the end of the existing entry.
 - Click OK.

See an example in the screenshot below:



3.2.3 Install SAP Client Software Locally

Note upfront:

The path to download SAP software might change after publication of this document so please search on our support portal also in other places if above path does not work.

We recommend to have SAP GUI and HANA Studio installed (the latter potentially in combination with the ABAP Development tools).

3.2.3.1 SAP GUI for S/4HANA

If not already installed on your PC, download SAP GUI 7.40 or higher.

Open the SAP Support Portal Software Download page <https://support.sap.com/swdc>, choose *Installations and Upgrades* → *A-Z Index* → *S* → *SAP S/4HANA ON-PREMISE* → *SAP S/4HANA ON-PREMISE 1511* → *Installation and Upgrade* → *SAP HANA* → *Presentation - 7.40 Compilation 2 Presentation 1* (download object 50131527_6).

Note:

The remote desktop has the SAP GUI incl. a defined connection to your SAP S/4HANA system already installed.

3.2.3.2 SAP HANA Studio

Download the SAP HANA Studio for your operating system from the SAP Support Portal or embed into an existing Eclipse installation as mentioned on <https://tools.hana.ondemand.com/#hanatools>

Note:

The remote desktop has the SAP HANA Studio incl. a defined connection to your SAP S/4HANA system already installed as part of the ABAP Development Tools (SAP HANA Modelling and some other perspectives in Eclipse).

3.2.3.3 ABAP Development Tools (ADT) (optional)

You can find the installation package for the ABAP Development Tools (ADT) at <https://tools.hana.ondemand.com>.

Note:

The remote desktop has the ADT tools incl. a defined connection to your SAP S/4HANA system already installed.

3.2.3.4 SAP BusinessObjects tools for analytical scenarios beyond the Embedded Analytics of SAP S/4HANA (all optional)

The SAP BusinessObjects tools can be used to connect to an SAP S/4HANA system and analyze data based on the Core Data Services Views (CDS views) of SAP S/4HANA.

The following tools might be worth looking into

1. SAP Business Objects tools for analysis, edition for Microsoft Office

- Requires an installed Microsoft Office suite on your local PC and can then be downloaded from <https://support.sap.com/swdc>
- The remote desktop has no MS Office installed (due to licensing constraints) so we recommend to use *SAP Business Objects Analysis, edition for Microsoft Office* on a local PC only.

2. SAP Lumira

- Can be downloaded from <https://support.sap.com/swdc>
- The remote desktop has SAP Lumira pre-installed.

3. SAP BusinessObjects Design Studio

- Can be downloaded from <https://support.sap.com/swdc>
- The remote desktop has SAP Design Studio pre-installed.

3.2.4 Connecting to SAP S4HANA / SAP HANA

3.2.4.1 Release and Support Package level

[Main Component]: SAP HANA Platform Edition 1.0

[Stack-no. of Main Component]: SPS10

[Language]: EN

[Main Component]: SAP S/4HANA, On-Premise 1511

[Stack-no. of Main Component]: FPS01

[Language]: all standard languages

3.2.4.2 Connecting to SAP S/4HANA via SAP GUI

Procedure

6. Start the SAP Logon.
7. Choose *New entry* → *User defined*.
8. In the System wizard, specify the following parameters:

Parameter ID		Parameter Value	Note
Application Server		<IP Address of SAP S/4HANA ABAB Virtual Machine> or alternatively, a mapped host name from your hosts file e.g. vhcals4hci (see 3.2.1)	The IP address of the S4HANA instance from the SAP Cloud Appliance Library
Instance Number		00	ABAP instance number used by the appliance.
System-ID		S4H	ABAP system id used by the appliance.
Client /User and Password	000	Client 000: SAP*, <Master Password> Client 000: DDIC, <Master Password> BPINST/Welcome1	Default technical users
	100	BPINST /Welcome1 S4H_FIN /Welcome1 S4H_CO/Welcome1 S4H_Cash /Welcome1 S4H_MM /Welcome1 S4H_MM1 /Welcome1 S4H_SD / Welcome1 S4H_PP /Welcome1	Exploration client
	200	BPINST /Welcome1	BW client
	300	BPINST /Welcome1 S4H_FIN /Welcome1 S4H_CO/Welcome1 S4H_Cash /Welcome1 S4H_MM /Welcome1 S4H/SD / Welcome1	SAP Best Practices content reference client

Parameter ID	Parameter Value	Note
	S4H/PP /Welcome1	
400	BPINST /Welcome1	Ready-to-Activate client

3.2.4.3 Connecting to HANA via SAP HANA Studio

Procedure

1. Start the installed SAP HANA Studio.
2. Open the Navigator view and right click on this view. Then choose Add System.

In the System wizard, specify the following parameters:

Parameter ID	Parameter Value	Note
Hostname	<IP Address of SAP S/4HANA ABAB Virtual Machine> or alternatively, a mapped host name from your hosts file e.g. vhcals4hci (see 3.2.1)	The IP address of the S4H/HANA instance from the SAP Cloud Appliance Library since the SAP HANA DB runs on the same host.
Instance Number	02	HANA instance number used for the appliance.
HANA User Name	BPINST	For the connection to the DB
Password HANA User Name	Welcome1	
HANA SYSTEM User Name	SYSTEM	Default administrator user for HANA access to HANA
Password HANA User Name	<Master Password>	The password is the same as the master password provided during instance creation in the SAP Cloud Appliance Library.

The system ID of the database is HDB. It is recognized automatically via the host name.

3.2.4.4 Connecting to SAP JAVA Administrator Portal

Enter the URL <http://vhcalj2eci.dummy.nodomain:50000/> into your browser (this works only if you have maintained your host file).

If you haven't maintained the hosts file yet the URL <http://<IP address of NW JAVA / ASE virtual machine>:50000/> will also work.

Administrator user and password are described in chapter 1.3.

3.2.4.5 Connecting to Fiori Launchpad

The Fiori Launchpad follows the standard address format: https://<hostname>.<domain name>:<port>/sap/bc/ui5_ui5/ui2/ushell/shells/abap/fiorilaunchpad.html

After you have mapped the IP address and hostname in the hosts file, you can access the default Fiori Launchpad at the link below.

https://vhcals4hci.dummy.nodomain:44300/sap/bc/ui5_ui5/ui2/ushell/shells/abap/FioriLaunchpad.html?sap-client=100&sap-language=EN

When you get the warning "Your connection is not private" (or similar as this depends on the browser) , click "Advanced", click "Proceed to vhcals4hci.dummy.nodomain (unsafe)", and then proceed with the user/client below.

Parameter ID	Parameter Value	Note
User Name	BPINST S4H_FIN S4H_CO S4H_Cash S4H_MM S4H_MM1 S4H_SD S4H_PP	BPINST has all business roles assigned and has access to all web-based apps. S4H_* users have application related business roles and have access to the respective application web-based apps.
Password	Welcome1	
Client	100	

4 Evaluate Business Content and Processes for Pre-Deployed Scenarios

4.1 Pre-configured Demo Guide

On the SAP S/4HANA, on-premise trial landing page <https://go.sap.com/cmp/oth/crm-s4hana/s4hana-on-premise.html>, you can find a **Demo Guide**, which describes end-to-end business processes, such as, Order-to-Cash; Procure-to-Pay; Plan-to-Production; Self-service Procurement via Purchasing Catalog. Furthermore, you can experience the online help function for SAP S/4HANA, On-Premise 1511 product.

4.2 SAP Best Practices in general

To evaluate SAP Best Practices for SAP S/4HANA, on-premise content, you can access www.service.sap.com/rds → *SAP S/4HANA* → *SAP Best Practices for SAP S/4HANA, on-premise* → *SAP Best Practices for SAP S/4HANA, on-premise edition* → *Download package*

4.3 Administration guide & SAP Note

For the Administrator Guide of SAP Best Practices for SAP S/4HANA, on-premise edition 1511 content, please visit: http://help.sap.com/s4hana_op_1511 → *Additional Information* → *Administration Guide for Solution Implementation of SAP S/4HANA, on-premise edition*.

In essence, this guide has been used to create this appliance.

The central SAP Note for this appliance is <https://launchpad.support.sap.com/#/notes/2032086>

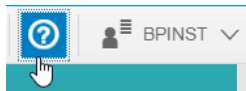
5 Additional Information

5.1 Integrated SAP S/4HANA User Assistance

The online help function of the SAP Fiori Launchpad is enabled in the system and can be accessed via the following link:

https://vhcals4hcs.dummy.nodomain:44301/sap/bc/ui5_ui5/ui2/ushell/shells/abap/FioriLaunchpad.html?sap-ushell-config-url=%2fresources%2fsap%2fdfa%2fhelp%2fsap%2fcfg%2fHelp4S4OP1511.json#Shell-home

Compared to the standard URL of Fiori Launchpad, additional parameters have been appended to call the online help resource. All Fiori Apps work in the same way with both URLs. You can click on the question mark icon in the upper right corner to display the integrated user assistance.




Note:

The question mark icon will only be displayed on pages where an online help entry has been defined by SAP (at the current moment, the start page of the Fiori Launchpad does not contain a help entry so you will not see this icon on the start page).

Below is an example from the finance area (Fiori app 'Manage customer line items') which shows you how to access and use such online help information:

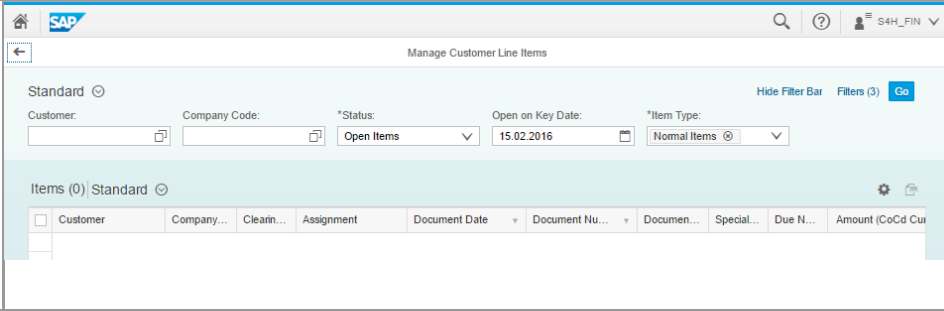
1. Logon to the system with the online-help-enabled URL:
https://vhcals4hcs.dummy.nodomain:44301/sap/bc/ui5_ui5/ui2/ushell/shells/abap/FioriLaunchpad.html?sap-ushell-config-url=%2fresources%2fsap%2fdfa%2fhelp%2fsap%2fcfg%2fHelp4S4OP1511.json#Shell-home
2. Logon with user S4H_FIN, password Welcome1, and client 100.
3. Follow the steps below.

What to Do	What You Will See
Open Manage Customer Line Items App	

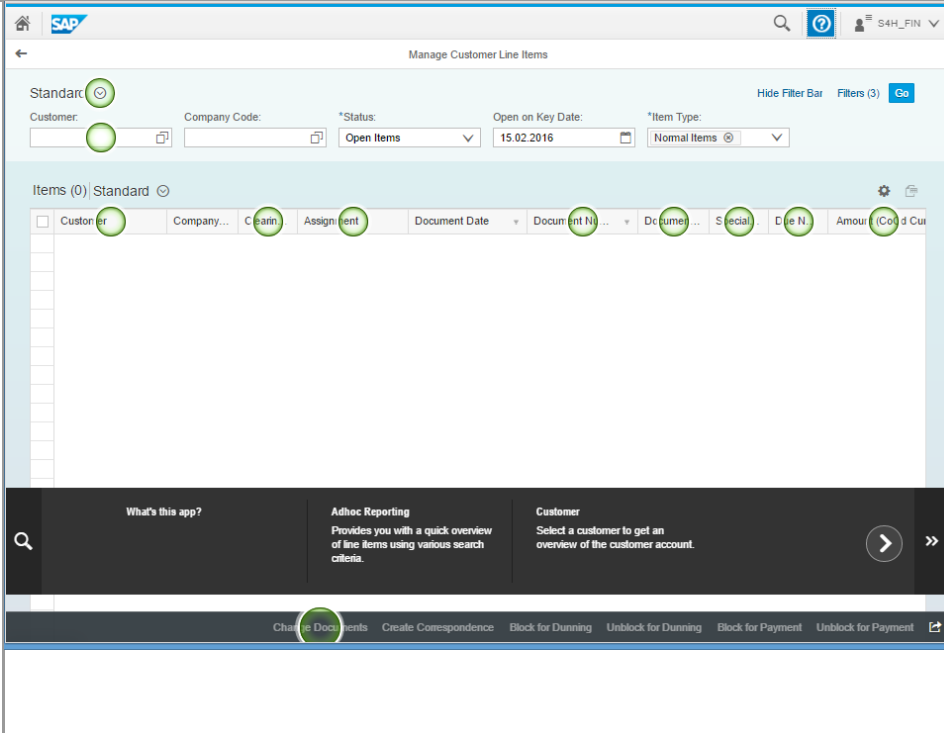
What to Do

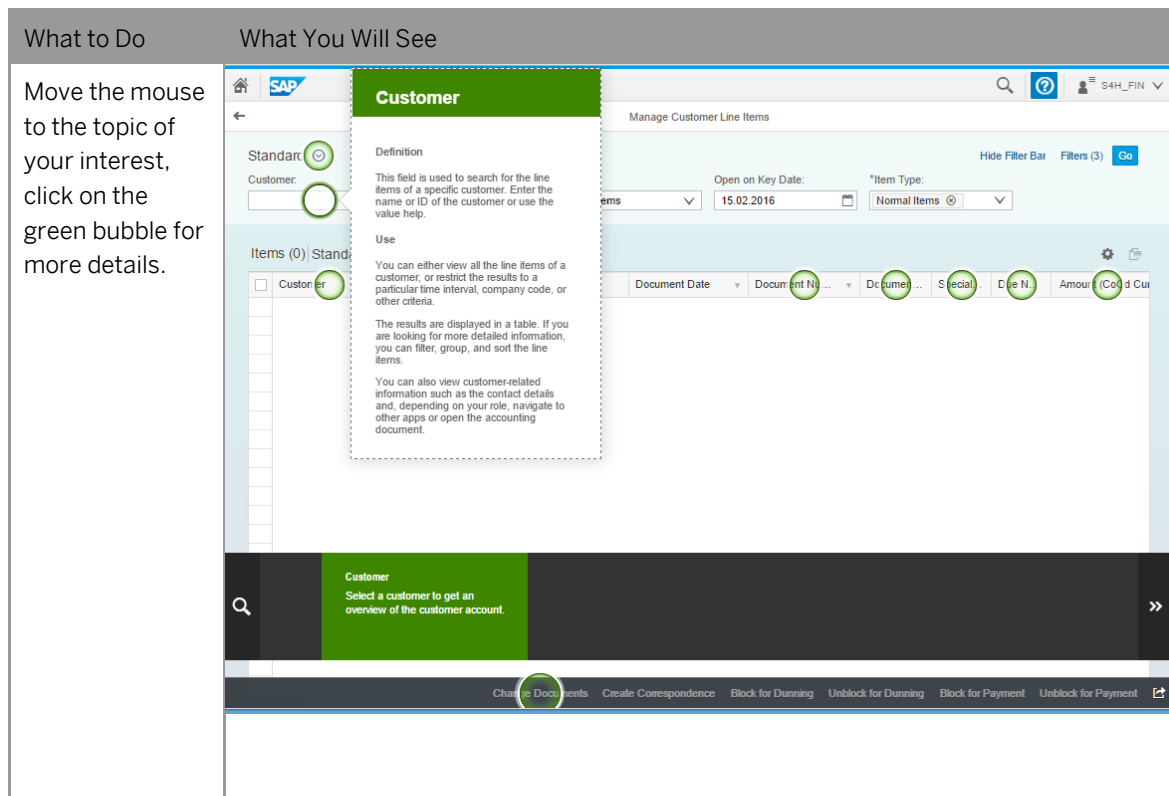
What You Will See

Click on the question mark



Online help document is available





If you create your own solution **in public cloud** (i.e. no proxy needed), you can experience the online help function without changing any parameters.

If you create your own solution **via VPN as extension to your company network** (i.e. the proxy settings of your company are used), you will need to adjust the web dispatcher configuration parameters accordingly by maintaining the parameters "wdisp/system_xx" following the official web dispatcher guide.

http://help.sap.com/saphelp_nw75/helpdata/en/48/99d142ee2b73e7e10000000a42189b/frameset.htm -> Tasks -> Parameterization/configuration

5.2 Embedded feedback function

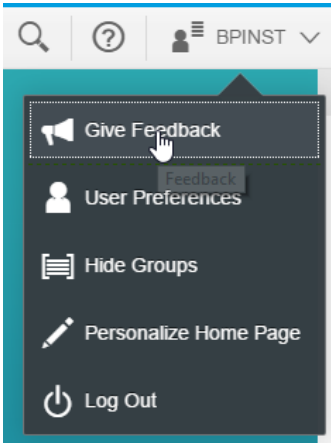
The embedded feedback function is enabled in the system. The end user can send feedback online via Fiori Launchpad (pull-down menu in upper right corner). Please be noticed that an RFC call (using HTTP connection SAP_USER_FEEDBACK_HTTPS in transaction SM59) is implemented to enable sending feedback to SAP. The RFC connection calls the SAP domain *.hana.ondemand to store feedback there.

If you create your own solution **in public cloud** (i.e. no proxy needed), you can send feedback directly. Use the same user and password as described in chapter 3.3.2, client 100.

If you create your own solution **via VPN as extension to your company network** (i.e. the proxy settings of your company are used), you will need to configure proxy server settings. To configure proxy settings, you will need to run the transaction /UI2/FEEDBACK_SETUP and fill in the fields accordingly. More information can be found at http://help.sap.com/saphelp_uiaddon10/helpdata/en/30/be1e026fea4bffb3c56a8eece7620f/content.htm

IMPORTANT:

The feedback you provide in this Fiori application is anonymous. If you do not leave your email address, there is no possibility for SAP to ever contact you.

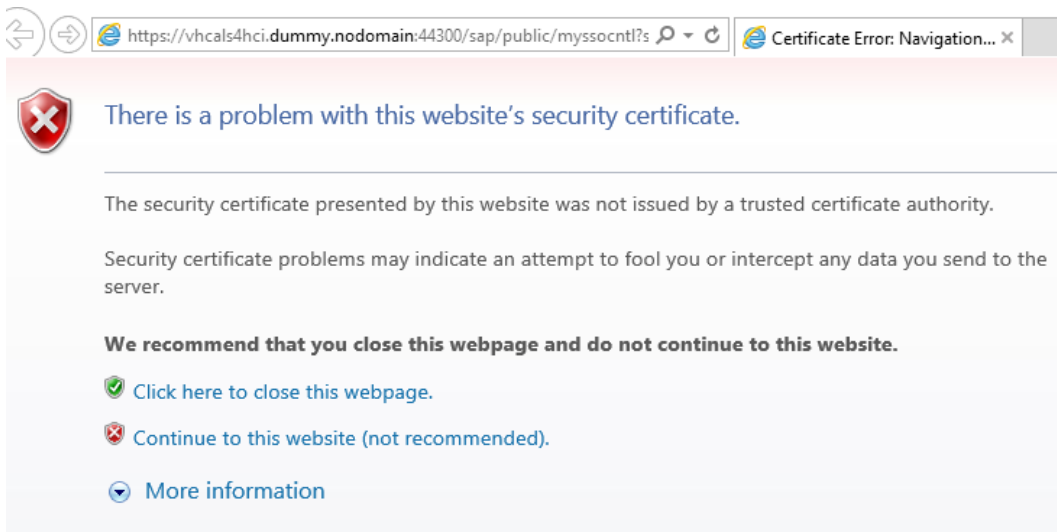


5.3 Calling a web-based ABAP Transaction

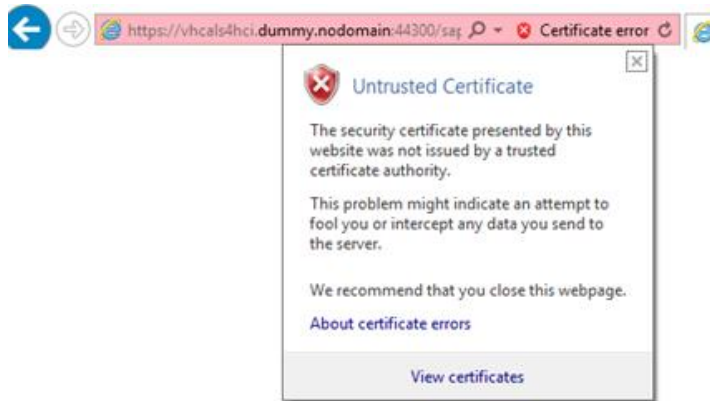
If you call any web based transaction via a transaction from the ABAP layer (for example, transactions NWBC or BRF+), a blank browser page will show up.

The root cause of this behavior are the self-signed certificates and trust relationship between your browser and the server called when running the transaction. The workaround for eliminating this behavior is to add the certificate to the IE trust root certificates as follows (instead of IE, it can also be another browser called on your pc).

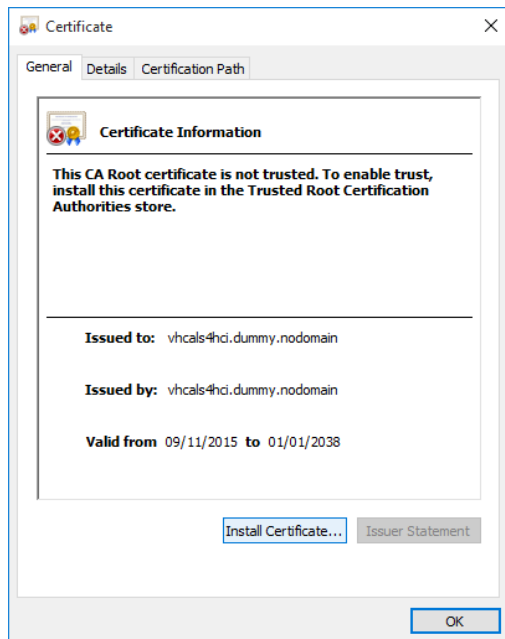
1. Call the transaction that launches the web application (for example, NWBC)



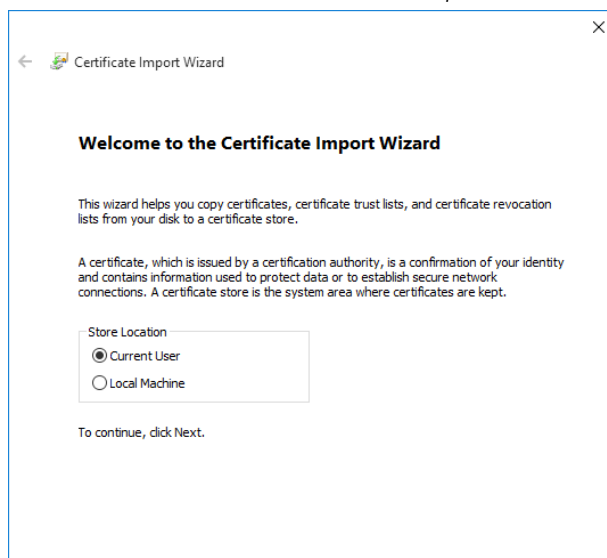
2. Select *Continue to this website*.
3. Click the *Certificate error* tab in browser.



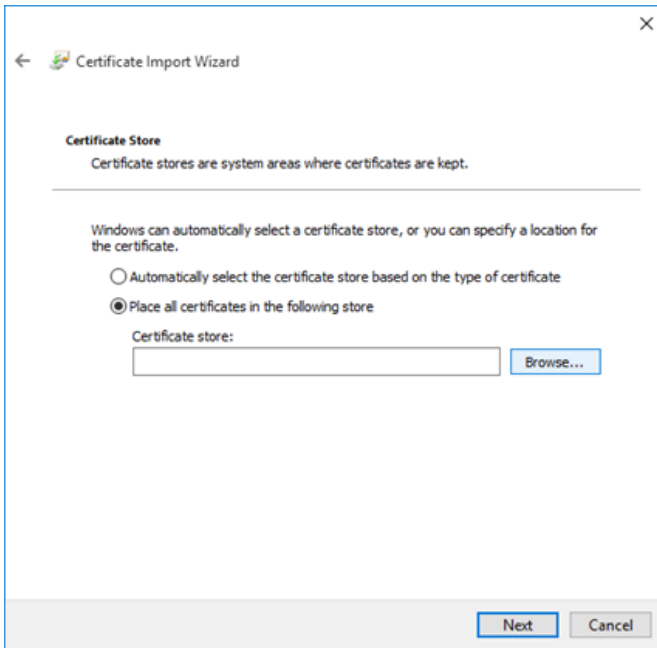
4. Click on *View certificates*.
5. Click on *Install certificate*.



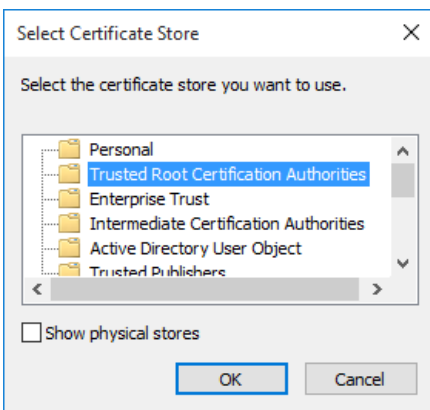
6. In the *Welcome to the Certificate Import Wizard* window, select *Current User* and then, choose *Next*.



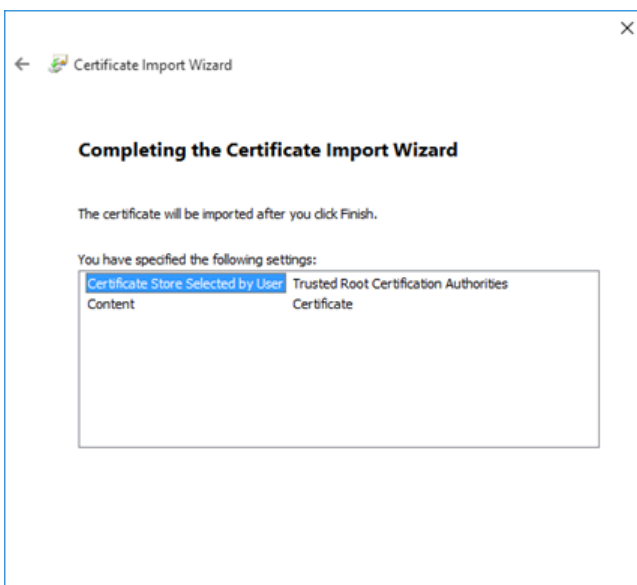
7. Select *Place all the certificates in the following store* and choose *Browse*.



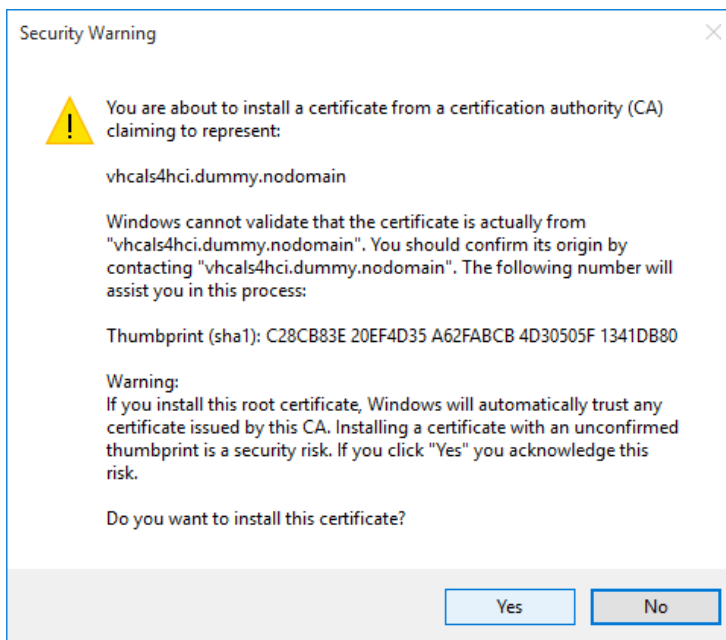
8. Select the *Trusted Root certification Authorities folder* and choose *Ok*.



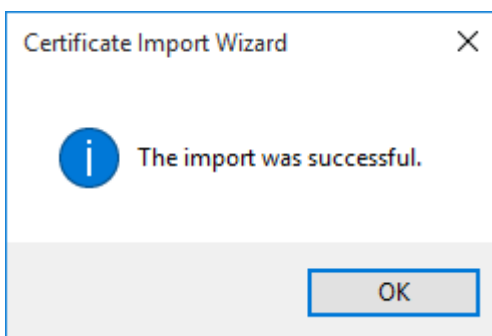
9. Click on *Next*, then on *Finish*.



10. In the *Security Warning* window, select Yes.



11. The import was successful. Close the browser window and run the same application again. The web application should now open.



6 Appendix

6.1 Installed Technical Component Details

6.1.1 SAP NetWeaver 7.50 application server ABAP incl. SAP S/4HANA on-premise edition 1511 FPS01

Installed Software Components

Component	Release	SP-Level	Support Package	Short Description of Component
SAP_BASIS	750	1	SAPK-75001INSAPBASIS	SAP Basis Component
SAP_ABA	75A	0001	SAPK-75A01INSAPABA	Cross-Application Component
SAP_GWFND	750	0001	SAPK-75001INSAPGWFND	SAP Gateway Foundation 7.50
SAP_UI	750	0001	SAPK-75001INSAPUI	User Interface Technology 7.50
ST-PI	740	0003	SAPK-74003INSTPI	SAP Solution Tools Plug-In
SAP_BW	750	0001	SAPK-75001INSAPBW	SAP Business Warehouse
UIBAS001	100	0001	SAPK-10001NUIBAS001	UI for Basis Applications 1.0
IW_PGW	100	0008	SAPK-10008INIWPGW	Process Gateway
MDG_FND	800	0001	SAPK-80001INMDGFND	MDG Foundation 749
WEBCUIF	800	0001	SAPK-80001INWEBCUIF	SAP Web UI Framework
MDG_APPL	800	0001	SAPK-80001INMDGAPPL	MDG Applications 618
MDG_MDC	800	0001	SAPK-80001INMDGMDC	MDG Applications

Component	Release	SP-Level	Support Package	Short Description of Component
MDG_UX	800	0001	SAPK-80001INMDGUX	MDG Applications
S4CORE	100	0001	SAPK-10001INS4CORE	S4CORE
SAP_HR	608	0021	SAPKE60821	Human Resources
SAP_HRCAE	608	0021	SAPK-60821INSAPHRCAE	Subcomponent SAP_HRCAE of SAP_HR
SAP_HRCAR	608	0021	SAPK-60821INSAPHRCAR	Subcomponent SAP_HRCAR of SAP_HR
SAP_HRCAT	608	0021	SAPK-60821INSAPHRCAT	Subcomponent SAP_HRCAT of SAP_HR
SAP_HRCAU	608	0021	SAPK-60821INSAPHRCAU	Subcomponent SAP_HRCAU of SAP_HR
SAP_HRCBE	608	0021	SAPK-60821INSAPHRCBE	Subcomponent SAP_HRCBE of SAP_HR
SAP_HRCBG	608	0021	SAPK-60821INSAPHRCBG	Subcomponent SAP_HRCBG of SAP_HR
SAP_HRCBR	608	0021	SAPK-60821INSAPHRCBR	Subcomponent SAP_HRCBR of SAP_HR
SAP_HRCCA	608	0021	SAPK-60821INSAPHRCCA	Subcomponent SAP_HRCCA of SAP_HR
SAP_HRCCH	608	0021	SAPK-60821INSAPHRCCH	Subcomponent SAP_HRCCH of SAP_HR
SAP_HRCCL	608	0021	SAPK-60821INSAPHRCCL	Subcomponent SAP_HRCCL of SAP_HR
SAP_HRCCN	608	0021	SAPK-60821INSAPHRCCN	Subcomponent SAP_HRCCN of SAP_HR
SAP_HRCCO	608	0021	SAPK-60821INSAPHRCCO	Subcomponent SAP_HRCCO of SAP_HR
SAP_HRCCZ	608	0021	SAPK-60821INSAPHRCCZ	Subcomponent SAP_HRCCZ of SAP_HR
SAP_HRCDE	608	0021	SAPK-60821INSAPHRCDE	Subcomponent SAP_HRCDE of SAP_HR
SAP_HRCDK	608	0021	SAPK-60821INSAPHRCDK	Subcomponent SAP_HRCDK of SAP_HR
SAP_HRCEG	608	0021	SAPK-60821INSAPHRCEG	Subcomponent SAP_HRCEG of SAP_HR

Component	Release	SP-Level	Support Package	Short Description of Component
SAP_HRCES	608	0021	SAPK-60821INSAPHRCES	Subcomponent SAP_HRCES of SAP_HR
SAP_HRCFI	608	0021	SAPK-60821INSAPHRCFI	Subcomponent SAP_HRCFI of SAP_HR
SAP_HRCFR	608	0021	SAPK-60821INSAPHRCFR	Subcomponent SAP_HRCFR of SAP_HR
SAP_HRCGB	608	0021	SAPK-60821INSAPHRCGB	Subcomponent SAP_HRCGB of SAP_HR
SAP_HRCGR	608	0021	SAPK-60821INSAPHRCGR	Subcomponent SAP_HRCGR of SAP_HR
SAP_HRCHK	608	0021	SAPK-60821INSAPHRCHK	Subcomponent SAP_HRCHK of SAP_HR
SAP_HRCHR	608	0021	SAPK-60821INSAPHRCHR	Subcomponent SAP_HRCHR of SAP_HR
SAP_HRCHU	608	0021	SAPK-60821INSAPHRCHU	Subcomponent SAP_HRCHU of SAP_HR
SAP_HRCID	608	0021	SAPK-60821INSAPHRCID	Subcomponent SAP_HRCID of SAP_HR
SAP_HRCIE	608	0021	SAPK-60821INSAPHRCIE	Subcomponent SAP_HRCIE of SAP_HR
SAP_HRCIN	608	0021	SAPK-60821INSAPHRCIN	Subcomponent SAP_HRCIN of SAP_HR
SAP_HRCIT	608	0021	SAPK-60821INSAPHRCIT	Subcomponent SAP_HRCIT of SAP_HR
SAP_HRCJP	608	0021	SAPK-60821INSAPHRCJP	Subcomponent SAP_HRCJP of SAP_HR
SAP_HRCKR	608	0021	SAPK-60821INSAPHRCKR	Subcomponent SAP_HRCKR of SAP_HR
SAP_HRCKW	608	0021	SAPK-60821INSAPHRCKW	Subcomponent SAP_HRCKW of SAP_HR
SAP_HRCKZ	608	0021	SAPK-60821INSAPHRCKZ	Subcomponent SAP_HRCKZ of SAP_HR
SAP_HRCMX	608	0021	SAPK-60821INSAPHRCMX	Subcomponent SAP_HRCMX of SAP_HR
SAP_HRCMY	608	0021	SAPK-60821INSAPHRCMY	Subcomponent SAP_HRCMY of SAP_HR

Component	Release	SP-Level	Support Package	Short Description of Component
SAP_HRCUA	608	0021	SAPK-60821INSAPHRCUA	Subcomponent SAP_HRCUA of SAP_HR
SAP_HRCUN	608	0021	SAPK-60821INSAPHRCUN	Subcomponent SAP_HRCUN of SAP_HR
SAP_HRCUS	608	0021	SAPK-60821INSAPHRCUS	Subcomponent SAP_HRCUS of SAP_HR
SAP_HRCVE	608	0021	SAPK-60821INSAPHRCVE	Subcomponent SAP_HRCVE of SAP_HR
SAP_HRCZA	608	0021	SAPK-60821INSAPHRCZA	Subcomponent SAP_HRCZA of SAP_HR
SAP_HRGXX	608	0021	SAPK-60821INSAPHRGXX	Subcomponent SAP_HRGXX of SAP_HR
SAP_HRRXX	608	0021	SAPK-60821INSAPHRRXX	Subcomponent SAP_HRRXX of SAP_HR
EA-DFPS	800	0001	SAPK-80001INEADFPS	SAP Enterprise Extension Defense Forces & Public Security
EA-FINSERV	800	0001	SAPK-80001INEAFINSRV	SAP Enterprise Extension Financial Services
EA-HR	608	0021	SAPK-60821INEAHR	SAP Enterprise Extension HR
EA-HRCAE	608	0021	SAPK-60821INEAHRCAE	Subcomponent EA-HRCAE of EA-HR
EA-HRCAR	608	0021	SAPK-60821INEAHRCAR	Subcomponent EA-HRCAR of EA-HR
EA-HRCAT	608	0021	SAPK-60821INEAHRCAT	Subcomponent EA-HRCAT of EA-HR
EA-HRCAU	608	0021	SAPK-60821INEAHRCAU	Subcomponent EA-HRCAU of EA-HR
EA-HRCBE	608	0021	SAPK-60821INEAHRCBE	Subcomponent EA-HRCBE of EA-HR
EA-HRCBG	608	0021	SAPK-60821INEAHRCBG	Subcomponent EA-HRCBG of EA-HR
EA-HRCBR	608	0021	SAPK-60821INEAHRCBR	Subcomponent EA-HRCBR of EA-HR
EA-HRCCA	608	0021	SAPK-60821INEAHRCCA	Subcomponent EA-HRCCA of EA-HR

Component	Release	SP-Level	Support Package	Short Description of Component
EA-HRCCH	608	0021	SAPK-60821INEAHRCCCH	Subcomponent EA-HRCCH of EA-HR
EA-HRCCL	608	0021	SAPK-60821INEAHRCCCL	Subcomponent EA-HRCCL of EA-HR
EA-HRCCN	608	0021	SAPK-60821INEAHRCCN	Subcomponent EA-HRCCN of EA-HR
EA-HRCCO	608	0021	SAPK-60821INEAHRCCO	Subcomponent EA-HRCCO of EA-HR
EA-HRCCZ	608	0021	SAPK-60821INEAHRCCZ	Subcomponent EA-HRCCZ of EA-HR
EA-HRCDE	608	0021	SAPK-60821INEAHRCDE	Subcomponent EA-HRCDE of EA-HR
EA-HRCDK	608	0021	SAPK-60821INEAHRCDK	Subcomponent EA-HRCDK of EA-HR
EA-HRCEG	608	0021	SAPK-60821INEAHRCEG	Sub component EA-HRCEG of EA-HR
EA-HRCES	608	0021	SAPK-60821INEAHRCES	Subcomponent EA-HRCES of EA-HR
EA-HRCFI	608	0021	SAPK-60821INEAHRCFI	Subcomponent EA-HRCFI of EA-HR
EA-HRCFR	608	0021	SAPK-60821INEAHRCFR	Subcomponent EA-HRCFR of EA-HR
EA-HRCGB	608	0021	SAPK-60821INEAHRCGB	Subcomponent EA-HRCGB of EA-HR
EA-HRCGR	608	0021	SAPK-60821INEAHRCGR	Subcomponent EA-HRCGR of EA-HR
EA-HRCHK	608	0021	SAPK-60821INEAHRCHK	Subcomponent EA-HRCHK of EA-HR
EA-HRCHR	608	0021	SAPK-60821INEAHRCHR	Subcomponent EA-HRCHR of EA-HR
EA-HRCHU	608	0021	SAPK-60821INEAHRCHU	Subcomponent EA-HRCHU of EA-HR
EA-HRCID	608	0021	SAPK-60821INEAHRCID	Subcomponent EA-HRCID of EA-HR
EA-HRCIE	608	0021	SAPK-60821INEAHRCIE	Subcomponent EA-HRCIE of EA-HR

Component	Release	SP-Level	Support Package	Short Description of Component
EA-HRCIN	608	0021	SAPK-60821INEAHRCIN	Subcomponent EA-HRCIN of EA-HR
EA-HRCIT	608	0021	SAPK-60821INEAHRCIT	Subcomponent EA-HRCIT of EA-HR
EA-HRCJP	608	0021	SAPK-60821INEAHRCJP	Subcomponent EA-HRCJP of EA-HR
EA-HRCKR	608	0021	SAPK-60821INEAHRCKR	Subcomponent EA-HRCKR of EA-HR
EA-HRCKW	608	0021	SAPK-60821INEAHRCKW	Subcomponent EA-HRCKW of EA-HR
EA-HRCKZ	608	0021	SAPK-60821INEAHRCKZ	Subcomponent EA-HRCKZ of EA-HR
EA-HRCMX	608	0021	SAPK-60821INEAHRCMX	Subcomponent EA-HRCMX of EA-HR
EA-HRCMY	608	0021	SAPK-60821INEAHRCMY	Subcomponent EA-HRCMY of EA-HR
EA-HRCNL	608	0021	SAPK-60821INEAHRCNL	Subcomponent EA-HRCNL of EA-HR
EA-HRCNO	608	0021	SAPK-60821INEAHRCNO	Subcomponent EA-HRCNO of EA-HR
EA-HRCNZ	608	0021	SAPK-60821INEAHRCNZ	Subcomponent EA-HRCNZ of EA-HR
EA-HRCOM	608	0021	SAPK-60821INEAHRCOM	Subcomponent EA-HRCOM of EA-HR
EA-HRCPH	608	0021	SAPK-60821INEAHRCPH	Subcomponent EA-HRCPH of EA-HR
EA-HRCPL	608	0021	SAPK-60821INEAHRCPH	Subcomponent EA-HRCPL of EA-HR
EA-HRCPT	608	0021	SAPK-60821INEAHRCPH	Subcomponent EA-HRCPT of EA-HR
EA-HRCQA	608	0021	SAPK-60821INEAHRCPH	Subcomponent EA-HRCQA of EA-HR
EA-HRCRO	608	0021	SAPK-60821INEAHRCPH	Subcomponent EA-HRCRO of EA-HR
EA-HRCRU	608	0021	SAPK-60821INEAHRCPH	Subcomponent EA-HRCRU of EA-HR

Component	Release	SP-Level	Support Package	Short Description of Component
EA-HRCSA	608	0021	SAPK-60821INEAHRCSA	Subcomponent EA-HRCSA of EA-HR
EA-HRCSE	608	0021	SAPK-60821INEAHRCSE	Subcomponent EA-HRCSE of EA-HR
EA-HRCSG	608	0021	SAPK-60821INEAHRCSG	Subcomponent EA-HRCSG of EA-HR
EA-HRCSI	608	0021	SAPK-60821INEAHRCSI	Subcomponent EA-HRCSI of EA-HR
EA-HRCSK	608	0021	SAPK-60821INEAHRCSK	Subcomponent EA-HRCSK of EA-HR
EA-HRCTH	608	0021	SAPK-60821INEAHRCTH	Subcomponent EA-HRCTH of EA-HR
EA-HRCTR	608	0021	SAPK-60821INEAHRCTR	Subcomponent EA-HRCTR of EA-HR
EA-HRCTW	608	0021	SAPK-60821INEAHRCTW	Subcomponent EA-HRCTW of EA-HR
EA-HRCUA	608	0021	SAPK-60821INEAHRCUA	Subcomponent EA-HRCUA of EA-HR
EA-HRCUN	608	0021	SAPK-60821INEAHRGUN	Subcomponent EA-HRCUN of EA-HR
EA-HRCUS	608	0021	SAPK-60821INEAHRCUS	Subcomponent EA-HRCUS of EA-HR
EA-HRCVE	608	0021	SAPK-60821INEAHRCVE	Subcomponent EA-HRCVE of EA-HR
EA-HRCZA	608	0021	SAPK-60821INEAHRCZA	Subcomponent EA-HRCZA of EA-HR
EA-HRGXX	608	0021	SAPK-60821INEAHRGXX	Subcomponent EA-HRGXX of EA-HR
EA-HRRXX	608	0021	SAPK-60821INEAHRRX	Subcomponent EA-HRRXX of EA-HR
EA-PS	800	0001	SAPK-80001INEAPS	SAP Enterprise Extension Public Services
FINBASIS	800	0001	SAPK-80001INFINBASIS	Financial Basis
ECC-SE	800	0000	-	ECC-SE
ERECRUIT	800	0001	SAPK-80001INERECRUIT	E-Recruiting

Component	Release	SP-Level	Support Package	Short Description of Component
FI-CA	800	0001	SAPK-80001INFICA	FI-CA
FI-CAX	800	0001	SAPK-80001INFICAX	FI-CA Extended
INSURANCE	800	0001	SAPK-80001ININSURANC	SAP Insurance
IS-CWM	800	0001	SAPK-80001INISCWM	Industry Solution Catch Weight Management
IS-H	800	0001	SAPK-80001INISH	SAP Healthcare
IS-M	800	0001	SAPK-80001INISM	SAP MEDIA
IS-OIL	800	0001	SAPK-80001INISOIL	IS-OIL
IS-PRA	800	0001	SAPK-80001INISPR	SAP IS-PRA
IS-PS-CA	800	0001	SAPK-80001INISPSCA	IS-PUBLIC SECTOR CONTRACT ACCOUNTING
IS-UT	800	0001	SAPK-80001INISUT	SAP Utilities/Telecommunication
LSOFE	800	0001	SAPK-80001INLSOFE	SAP Learning Solution Front-End
SEM-BW	800	0001	SAPK-80001INSEMBW	SEM-BW: Strategic Enterprise Management
GBX01HR	600	0003	SAPK-60003INGBX01HR	FIORI X1 HCM
GBX01HR5	605	0001	SAPK-60501INGBX01HR5	FIORI X1 HCM
SAPUIFT	100	0001	SAPK-10001INSAPUIFT	SAP UI Frontend Implementation Technology
UIAPFI70	300	0001	SAPK-30001INUIAPFI70	UI SFIN
UIS4HOP1	100	0001	SAPK-10001INUIS4HOP1	UI for S/4HANA On Premise
UIX01CA1	200	0001	SAPK-20001INUIX01CA1	UI for Cross-Applications
BSNAGT	200	0001	SAPK-20001INBSNAGT	BSN AGENT
ST-A/PI	01R_73 1	0002	SAPKITAB9P	Service tools for SAP Basis 731

Installed Product Versions

Product	Release	Vendor	Short Description of Product Versions
CONCEPT GATEWAY	2.0	sap.com	SAP GATEWAY 2.0
S4HANA On-Premise	1511	sap.com	SAP S4HANA, On-Premise 1511
NW FOR S4HANA ONPREMISE	1511	sap.com	NW 7.5 FOR S4HANA OP 1511
SAP Fiori for S4HANA	1511	sap.com	SAP Fiori for SAP S4HANA 1511
SAP Fiori Front-end Server	200	sap.com	SAP Fiori front-end server 2.0

In addition, 38 languages are installed.

6.1.2 SAP NetWeaver 7.50 application server JAVA with Adobe Document Services installed

Product Name	Name	Version	Vendor	Description
SAP NETWAVER	13	7.5	sap.com	SAP NETWEAVER 7.5: Adobe Document Services
SAP NETWAVER	2	7.5	sap.com	SAP NETWEAVER 7.5: Application Server Java

6.1.3 Windows Remote Desktop

- SAP JVM 8.1.000
- ABAP Development Tools 2.51
- BW Modeling Tools 1.1.7
- SAPUI5 Tools 2.0
- SAP GUI for Windows 7.40 final release (patch 5)
- SAP BusinessObjectsDesignStudio Release 1.6
- SAP JVM 7.1 32BIT
- SAP Lumira Desktop edition 1.30





www.sap.com/contactsap

© 2016 SAP SE or an SAP affiliate company. All rights reserved.
No part of this publication may be reproduced or transmitted in any form or for any purpose without the express permission of SAP SE or an SAP affiliate company.

The information contained herein may be changed without prior notice. Some software products marketed by SAP SE and its distributors contain proprietary software components of other software vendors. National product specifications may vary. These materials are provided by SAP SE or an SAP affiliate company for informational purposes only, without representation or warranty of any kind, and SAP or its affiliated companies shall not be liable for errors or omissions with respect to the materials. The only warranties for SAP or SAP affiliate company products and services are those that are set forth in the express warranty statements accompanying such products and services, if any. Nothing herein should be construed as constituting an additional warranty. SAP and other SAP products and services mentioned herein as well as their respective logos are trademarks or registered trademarks of SAP SE (or an SAP affiliate company) in Germany and other countries. All other product and service names mentioned are the trademarks of their respective companies. Please see www.sap.com/corporate-en/legal/copyright/index.epx for additional trademark information and notices.