

## Taxonomic Reappraisal of the Northeast Mindanao Stream Frog, *Sanguirana albotuberculata* (Inger 1954), Validation of *Rana mearnsi*, Stejneger 1905, and Description of a New Species from the Central Philippines

RAFE M. BROWN<sup>1,6</sup>, ALLYSON PRUE<sup>1,2</sup>, CHAN KIN ONN<sup>1</sup>, MAREN GAULKE<sup>3</sup>, MARITES B. SANGUILA<sup>4</sup>, AND CAMERON D. SILER<sup>5</sup>

<sup>1</sup> Department of Ecology and Evolutionary Biology and Biodiversity Institute, University of Kansas, Lawrence, KS 66045-7561, USA

<sup>2</sup> Haskell Indian Nations University, Lawrence, KS 66045, USA

<sup>3</sup> GeoBio Center LMU, Richard-Wagner-Strasse 10, 80333 München, Germany

<sup>4</sup> Biodiversity Informatics and Research Center, Father Saturnino Urios University, San Francisco Street, 8600, Butuan City, Philippines

<sup>5</sup> Department of Biology and Sam Noble Oklahoma Museum of Natural History, University of Oklahoma, Norman, OK 73072-7029, USA

**ABSTRACT:** With a published multilocus phylogenetic analysis as our guide, we use new data from the external phenotype and genetically defined distributions of evolutionary lineages to resolve species boundaries associated with the southwest Mindanao Stream Frogs, *Sanguirana everetti* (Boulenger 1882), its junior synonym, *Rana mearnsi*, Stejneger 1905, and the northeast Mindanao Stream Frogs, *Sanguirana albotuberculata* (Inger 1954). Consideration of relationships, distributions, type localities, phenotypic data, and type specimens clearly indicates that the names *R. mearnsi* and *S. albotuberculata* refer to the same lineage, and we recognize the oldest available name (*Sanguirana mearnsi*) for this species. We also define the central Philippine lineage (from Negros, Masbate, and Panay islands) as a distinct new species. Long confused with *S. everetti*, the new taxon is readily diagnosed and biogeographically restricted to the West Visayan faunal region. The new multilocus estimate of phylogeny and our multivariate analysis of morphological variation demonstrate that the new species is closely related and phenotypically most similar to northern Philippine *Sanguirana luzonensis*, to the exclusion of *S. everetti*, the southern species with which it previously was confused. Morphological characters distinguishing the new species include body size, the absence of infraorbital tubercles, the presence of smooth dorsal skin without dorsolateral folds or dermal asperities, its degree of sexual size dimorphism, uniquely stratified flank coloration, bright white subarticular tubercles, bold pectoral patches, dark transverse bars on the limbs, and various body proportions. Recognition of this new species further emphasizes the predictable nature of island bank-structured endemism in the Philippines and demonstrates that the country's vertebrate diversity remains underestimated. The new species is relatively rare, patchily distributed and, with so little natural forest remaining in the central Philippines, it constitutes an immediate conservation concern. Management of this problem will require continued, field-based collection of data on the new species, distribution, local abundance, population trends, natural history, reproductive biology, and larval ecology—most of which currently is unknown.

**Key words:** Anuran biodiversity; Biogeography; Cascade Frogs; Endemicity; Ranidae; *Sanguirana acai* sp. nov.; Slender Stream Frogs

PHILIPPINE amphibian diversity currently consists of 112 species, with most (~85%) of these taxa endemic to the archipelago (Brown 2007; Diesmos and Brown 2011; Diesmos et al. 2014, 2015). Rates of species discovery in the archipelago show no signs of slowing (Brown et al. 2008, 2013a; Brown and Stuart 2012; Diesmos et al. 2015), and nearly 30% of the country's amphibian fauna have been discovered and described in the last 2 decades (Diesmos and Brown 2011; Brown 2015; Diesmos et al. 2015). Unfortunately, more than a third of the archipelago's species have been found to qualify for formal threatened status at some level (Diesmos et al. 2014; IUCN 2015).

Endemic ranoid frogs are particularly diverse with at least 11 species of *Limnonectes* and 2 species of *Occidozyga* (Dicroglossidae; Taylor 1920, 1922; Evans et al. 2003; Siler et al. 2009; Setiadi et al. 2011), 32 or more *Platymantis* (Ceratobatrachidae; Siler et al. 2010; Brown et al. 2015a,b), 2 species of *Staurois* (Arifin et al. 2011), and 13 native species of ranids (Brown 2007; Diesmos et al. 2015). Excluding introduced species such as *Hoplobatrachus rugulosus*, *Hylarana erythraea*, and *Lithobates catesbeianus* (Diesmos et al. 2006, 2015; Brown 2007), Philippine ranids are divided into three genera: *Pulchrana* with five species (Brown and Guttman 2002; Brown and Siler 2013; Brown 2015), "*Amnirana*," consisting of one nonendemic native species (Inger 1954, 1999; Brown and Alcalá 1970; Oliver et al. 2015;

Diesmos et al. 2015; Chan and Brown 2017), and *Sanguirana*, containing seven species formerly referred to the *Rana everetti* Complex (Brown et al. 2000a; Brown 2007; Fuiten et al. 2011; Brown et al. 2016). Philippine *Pulchrana* and *Sanguirana* are found on most major islands of the archipelago and are distributed in accordance with geologically defined (Inger 1954; Voris 2000) biogeographic regions known as Pleistocene Aggregate Island Complexes (PAICs; Brown and Diesmos 2002, 2009; Brown et al. 2013a), with most PAICs possessing at least one widespread species (Inger 1999; Brown et al. 2000a, 2016; Brown and Siler 2013) and the largest islands (Luzon and Mindanao) supporting 2–4 species, with distributions structured geographically and/or along elevational gradients (Taylor 1922; Brown et al. 2000a, 2016; Brown 2015; Fuiten et al. 2011).

Boulenger (1882) described *Rana everetti* from an unspecified type locality of "Zamboanga" (an elongate peninsula of western Mindanao Island, southern Philippines; Fig. 1A), and more than 2 decades later Stejneger (1905) named *Rana mearnsi* from the mountains of eastern Mindanao. Taylor (1920) recognized both of these taxa and named a third Mindanao Stream Frog, *Rana dubita*, from Bunawan, east-central Mindanao. Particularly important for the current study, in the same work he also referred some of his own specimens from an allopatric population on southern Negros Island (Fig. 1A) to *Rana mearnsi*.

When Inger (1954) later synonymized *Rana mearnsi* and *R. dubita* with *R. everetti*, he characterized the Negros

<sup>6</sup> CORRESPONDENCE: e-mail, rafe@ku.edu

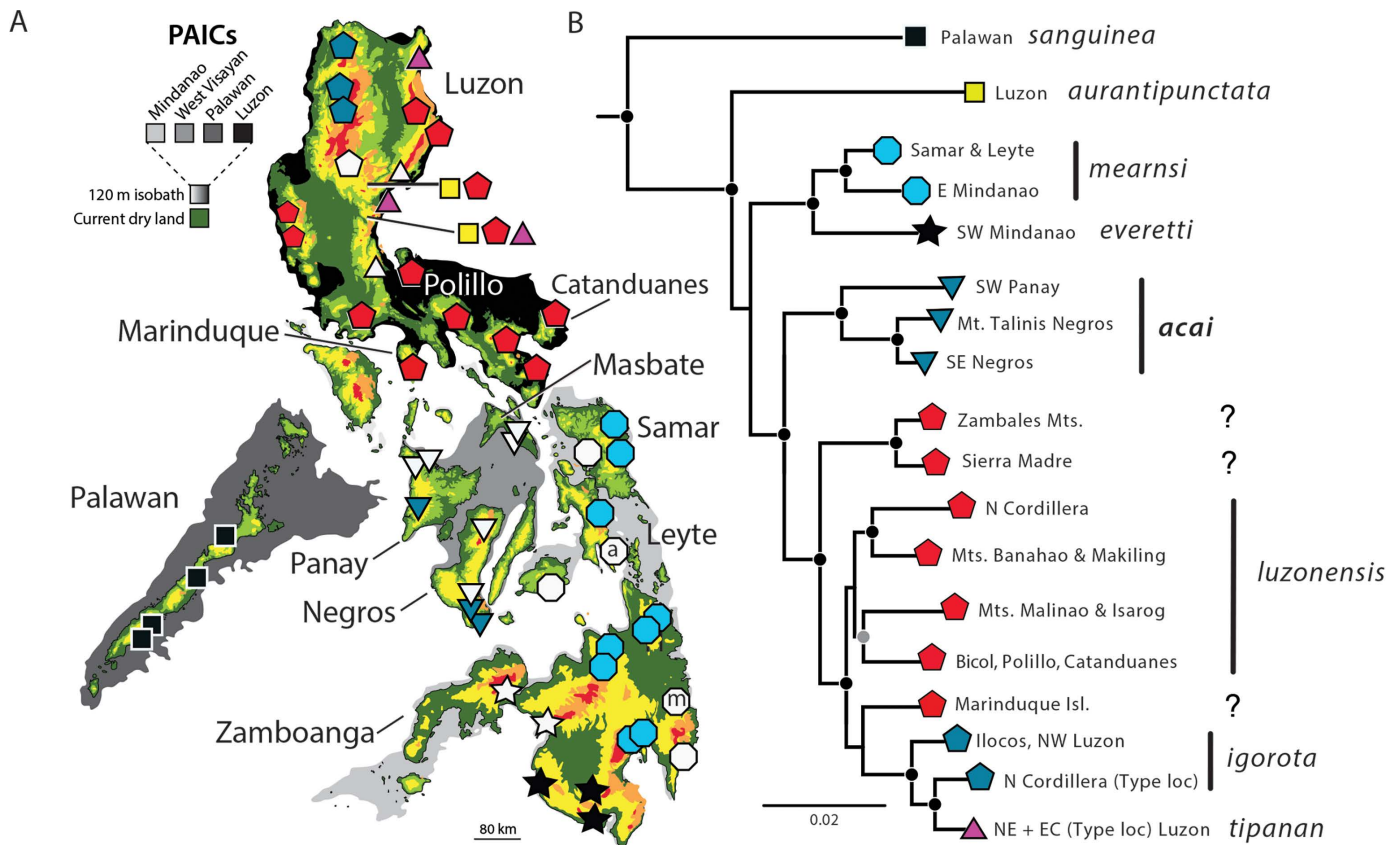


FIG. 1.—(A) Distributions of the eight species of the Philippine endemic genus *Sanguirana* with vouchered localities indicated with symbols colored when corresponding to genetic samples; white in cases where no genetic data are available; m = type locality of *Rana mearnsi* (Baganga River); a = type locality of *Rana everetti albotuberculata* (Cabalian); Pleistocene Aggregate Island Complexes (PAICs; Brown and Diesmos 2009) indicated with incremental gray shading (key). (B) Multilocus Bayesian phylogenetic estimate of evolutionary relationships in the genus *Sanguirana* (from Brown et al. 2016); black dots at nodes indicate strongly supported clades (likelihood bootstraps  $\geq 70\%$ ; posterior probabilities  $\geq 0.95$ ); gray node moderately supported ( $<70\%$  /  $>0.90$ ); symbols at branch tips correspond to those plotted on map (A) and question marks at tree tips indicate populations of uncertain taxonomic status. See text and Brown et al. (2016) for additional details. A color version of this figure is available online.

Island population as conspecific with the Mindanao population. He conceived of *R. everetti* as a polytypic taxon containing three subspecies: *R. e. everetti* Boulenger 1882, *R. e. luzonensis* Boulenger 1896, and *R. e. albotuberculata* Inger 1954. The West Visayan populations (Negros, Masbate, and Panay islands) have resided in synonymy with *Sanguirana everetti* ever since (Brown and Alcalá 1970; Sison et al. 1995; Ferner et al. 2000; Brown et al. 2000a,b, 2016). This arrangement has persisted, but without explicit scrutiny of its underlying assumptions, and despite the fact that under the prevailing biogeographic framework (Brown and Alcalá 1970; Brown and Diesmos 2009; Brown et al. 2013a), such a distribution is highly anomalous because it spans widely allopatric yet restricted geographic regions on multiple PAICs (Brown and Guttman 2002; Brown and Diesmos 2009; Brown and Siler 2013).

Meanwhile, recent taxonomic works have recognized all of Inger's former subspecies as full species (Brown et al. 2000a; Brown 2007; Diesmos et al. 2015), resurrected Taylor's (1922) *Rana igorota* (Brown et al. 2000a), and described two additional species, *S. tipanan* (Brown et al. 2000a) and *S. aurantipunctata* (Fuiten et al. 2011). Most recently, following higher-level phylogenetic analyses (Wiens et al. 2009), Fuiten et al. (2011) expanded and augmented the definition of the genus *Sanguirana* (Dubois 1992; Brown et al. 2000a)

to include the Palawan Wood Frogs *S. sanguinea* (Boettger 1893). This Palawan PAIC endemic had previously been considered a Papuan-derived Philippine faunal element (Inger 1954; Dubois 1992); the morphological and biogeographic distinctiveness of *S. sanguinea* most likely led to this view never being challenged by anuran taxonomists (Inger 1954; Fuiten et al. 2011). Recent phylogenetic analyses (Brown et al. 2016) demonstrate that *S. sanguinea* is actually the first-diverging lineage in a Palawan–Ark-facilitated biogeographic diversification scenario (Blackburn et al. 2010; Siler et al. 2012), suggesting that *Sanguirana* first diversified on the isolated Palawan Micro-continental Block (Zamoros et al. 2008; Yumul et al. 2009a; Aurelio et al. 2013) before undergoing range expansion via overseas dispersal after colonization of multiple oceanic Philippine landmasses (Brown et al. 2016; Chan and Brown 2017).

The genus *Sanguirana* now consists of species with largely allopatric distributions including *S. albotuberculata* from Leyte, Samar, and eastern Mindanao islands (Sanguila et al. 2016); *S. aurantipunctata* from a few sites in the mountains of central Luzon Island (Fuiten et al. 2011); *S. everetti* from southwestern Mindanao Island (Inger 1954); *S. sp.* (“*S. cf. everetti*”) from Negros, Masbate, and Panay islands (Sison et al. 1995; Ferner et al. 2000; Gaulke 2011); *S. igorota* from the Cordillera Mountain Range of Luzon Island (Taylor

1920); *S. luzonensis* from throughout most islands of the Luzon PAIC (Brown et al. 2000a, 2016); *S. sanguinea* from the Palawan PAIC landmasses (Boulenger 1894; Inger 1954; Brown 2007); and *S. tipanan* from the Sierra Madre Mountain Range, of Luzon Island (Brown et al. 2000a; Fuiten et al. 2011; Fig. 1).

Molecular phylogenetic analyses strongly support the monophyly of the clade and confirm the inclusion of *S. sanguinea* as part of this genus (Bossuyt et al. 2006; Stuart 2008; Wiens et al. 2009; Holder et al. 2010). However, a recent multilocus phylogenetic study demonstrated that the West Visayan populations form a highly divergent, well supported clade unrelated to *Sanguirana everetti*, precluding their continued identification as that taxon and necessitating this study (Brown et al. 2016).

In this paper we reconsider the taxonomic status of the lineage from the northeast Mindanao faunal region, *S. albotuberculata* (Inger 1954), in light of genetically verified species distributions (Brown et al. 2016), relevant type localities, phenotypic variation, and examination of the name-bearing type specimens of these taxa. We find the substitution of *S. mearnsi* (Stejneger 1905) for *S. albotuberculata* (Inger 1954) advisable at this time and we place the latter in synonymy with the former. We also revisit the issue of the biogeographically anomalous West Visayan (Negros, Masbate, and Panay islands) populations of “*Sanguirana everetti*” and find character-based morphometric, biogeographic, and genetic evidence for the recognition of a new central Philippine endemic species.

## MATERIALS AND METHODS

### Morphological Character Differences

Specimens of all species of the genus *Sanguirana* were examined (Appendix; museum institutional codes/acronyms follow Sabaj 2016) and data from types were incorporated into definitions and diagnoses presented here. Specimens were examined for the presence–absence of diagnostic morphological character states including color pattern, body proportions, nuptial pad shape, digital characters, dermal asperities, infracloacal tubercles, dermal flanges along limbs, and raised dorsolateral ridges (Taylor 1920; Inger 1954; Brown et al. 2000a; Fuiten et al., 2011).

Sex was determined by body size (for mature females), the presence–absence of conspicuous secondary sexual characteristics (nuptial pads in males; male *Sanguirana* lack vocal sacs), and/or by gonadal inspection in the case of specimens of intermediate sizes.

### Vocalizations

Frog vocalizations were recorded with an analog tape recorder (Sony WM DC6 Professional Walkman) with a directional microphone (Sennheiser ME80 condenser microphone, equipped with K3U power module). Calls were recorded at distances of 1–3 m after which ambient and cloacal temperatures were collected. Calls were digitized and analyzed with Raven Pro v1.5 (Bioacoustics Research Group, Cornell Lab of Ornithology, Ithaca, NY) software set on default spectrogram parameters (256 samples and 50% overlap). We examined oscillograms (waveforms), audio-spectrograms (sonograms), and results of the Fast Fourier Transformation (FFT; power spectrum) for a series of

spectral and temporal call characteristics following Brown and Guttman (2002) and Brown and Gonzales (2007). Calls are archived at the Cornell Laboratory of Ornithology Macaulay Library (ML) under ML digital media catalog numbers 224181 and 224348.

### Analyses of Continuously Varying Phenotypic Variation

To examine *Sanguirana* populations for lineage-based structure in continuously varying morphometric characters, we supplemented published morphological and mensural data for the genus *Sanguirana* (Brown et al. 2000a; Fuiten et al. 2011) with new data from all species and exhaustive sampling of *Sanguirana albotuberculata* from northeast Mindanao, Leyte, and Samar islands and *S. cf. everetti* from Negros, Masbate, and Panay, islands (Appendix). We included all named *Sanguirana* from the oceanic Philippine islands, the West Visayan population of “*S. everetti*” (the new species), and excluded only *S. sanguinea* from Palawan Island, a species shown to be highly morphologically distinct from congeners (Inger 1954; Brown et al. 2000a; Fuiten et al. 2011). We treated *S. luzonensis* as two putative operational taxonomic units (OTUs) on the basis of observed variation in phylogenetic analysis resulting from mitochondrial (mtDNA) and nuclear (nDNA) DNA datasets (Brown et al. 2016). In our previous study (Brown et al. 2016), we observed moderately supported incongruence between mtDNA and nDNA datasets, suggesting that *S. igorota* and *S. tipanan* may be nested within *S. luzonensis*, with some northern Luzon Island populations of *S. luzonensis* sister to a ([*S. igorota*, *S. tipanan*] southern *S. luzonensis*) clade. Thus, given that we did not find strong support for the monophyly of all *S. luzonensis* populations, and the possibility that some northern *S. luzonensis* populations could be a distinct evolutionary lineage (but see Brown et al. 2016, for discussion of other possibilities), we designated the northern and southern Luzon populations as two OTUs for our analysis of continuously varying morphometric variation.

We collected data for the following 19 mensural characters following the character definitions of Brown et al. (2000a) and Fuiten et al. (2011): snout–vent length (SVL), head, and snout lengths; head width, interorbital and internarial distances; eye and tympanic annulus diameters; lengths of forearm, femur, tibia, tarsus, foot, and hand, Finger I, Finger III, and Toe IV; Finger III and Toe IV terminal disk widths; and nuptial pad length. All measurements (taken by AP and RMB only to reduce intermeasurer bias; Lee 1982, 1990; Hayek et al. 2001) were measured to the nearest 0.1 mm (with digital calipers and stereomicroscope when necessary) from sexually mature adult males; data were excluded to minimize the impact of allometric ontogenetic variation (juveniles) and due to insufficient sample sizes among all groups (females).

Prior to analyses, measurements were corrected for differences in ontogenetic composition (Thorpe 1983a) using the following allometric equation:  $X_{\text{adj}} = X - \beta(\text{SVL} - \text{SVL}_{\text{mean}})$ , where  $X_{\text{adj}}$  is the adjusted value of the morphometric variable and  $X$  is the original value; SVL = snout–vent length;  $\text{SVL}_{\text{mean}}$  = overall mean SVL length; and  $\beta$  is the within-OTU coefficient of the linear regression of each original character value ( $X$ ) against SVL (following Thorpe 1975, 1983b; Turan 1999; Chan et al. 2013). Based on the values of  $\beta$ , a subset of 14 informative morphometric

characters were selected for inclusion in subsequent analyses. These characters include SVL, head and snout lengths, head width, tympanic annulus diameter, forearm, femur, tibia, tarsus, foot, and hand width, Toe IV, Finger III disc widths, and nuptial pad length. Separately conducted Shapiro–Wilk tests indicated violations of the assumptions of normality for SVL, head width, and lengths of snout, tibia, tarsus, hand, nuptial pad length, and Toe IV disc width ( $P > 0.05$ ), and Levene’s tests of homogeneity of variance indicated most were heteroscedastic. Accordingly, we log-transformed all data and then confirmed that they satisfied assumptions of normality and homoscedasticity before performing subsequent multivariate analyses and analyses of variance (ANOVAs) with post hoc Tukey tests (or Tukey–Kramer tests in cases of unequal sample sizes) to identify individual character differences among means of our seven designated OTUs/species.

A principal component analysis (PCA) was performed to find the best low-dimensional representation of morphological variation in the data and to further determine whether continuous morphological variation could form the basis of statistically detectable group structure. Principal components with eigenvalues of 1.0 or higher were retained in accordance to Kaiser’s criterion (Kaiser 1960). To further characterize clustering and distance in morphospace, a discriminant analysis of principal components (DAPC) was performed for all congeners to find the linear combinations of morphological variables that have the largest between-group variance and the smallest within-group variance. The DAPC relies on data transformation using PCA as a prior step to discriminant analysis (DA), ensuring that variables included in the DA are uncorrelated and number fewer than the sample size (Jombart et al. 2010). All analyses were implemented and visualized using the statistical software environment R v3.1.2 (R Core Team 2015). The DAPC analysis was performed using the R package *adeigenet* v2.0.0 (Jombart 2008).

#### Phylogenetic Evidence

We refer to the recently published study of Brown et al. (2016) which included sampling from 161 individuals from throughout the Philippine archipelago (47 localities) and specimens of all currently recognized species of the genus *Sanguirana* (Fig. 1B). That study included a concentrated analysis of 6098 nucleotide positions from two mitochondrial gene regions and six nuclear loci, and standard phylogenetic analyses using likelihood (ML) and Bayesian (BA) methods. Details of polymerase chain reaction temperature regimes, manufacturer laboratory protocols, inference of nucleotide substitution models, partitioning strategy, and details of phylogenetic analyses are provided in Brown et al. (2016). For simplicity, because ML and BA analyses produced identical topological estimates, we summarize here just the Bayesian estimate of phylogeny and posterior probabilities of nodal support. All sequences are deposited in GenBank (Brown et al. 2016: Supplemental Appendix).

#### Species Concept

We embrace the General Lineage Concept of species (de Queiroz 1998, 1999) as the logical extension of the Evolutionary Species Concept (Simpson 1961; Wiley 1978), which has been articulated in a manner (de Queiroz 2005,

2007) that is particularly consistent with our definition of this new species. A species is the most inclusive lineage segment (ancestor–descendant series of metapopulations) identified as distinct from other such lineages, within which there is evidence of reproductive cohesion, for which we can infer a unique evolutionary history and predict an independent future evolutionary trajectory or “fate” (Wiley 1978; Frost and Hillis 1990; Brown and Diesmos 2002). We recognize as distinct evolutionary lineages those ancestor–descendent population segments that are (1) sympatric or parapatric (occur on the same landmass) but with discrete, diagnostic, phenotypic, and/or ecological character state differences, and a genetic evidence of lineage cohesion (inferred absence of reticulation or gene flow with other sympatric congeners) and, thus, lineages for which the hypothesis of conspecificity can be rejected; or those that are (2) allopatric or geographically isolated (i.e., as insular or PAIC endemic lineages and, thus, demonstrably unique evolutionary entities) and morphologically, ecologically, and/or genetically distinct.

For the purpose of recognizing the noncontroversial evolutionary lineages of the Mindanao PAIC (Brown et al. 2000a, 2016), criterion (1), for example, is applicable: the northeast Mindanao, Leyte, and Samar islands’ (Fig. 1) lineage was recognized originally (described as *Rana mearnsi* [Stejneger 1905]; see below), and later was redescribed (Inger 1954; as *Rana e. albotuberculata*) with an accompanying analysis of intraspecific mensural and meristic data. This lineage originally was diagnosed as part of a polytypic taxon (Inger 1954), and later redefined as an evolutionary species (Brown et al. 2000a) distinct from the parapatric southwest Mindanao Island *Sanguirana everetti* (see Brown et al. 2000a, 2016, for evolutionary species definition, illustration of diagnostic characters, phylogeny, and biogeographical inference). Likewise, for the purpose of the new species recognized here, criterion (2) is clearly applicable, and the recognition of the new species is not surprising because it represents a distinct evolutionary lineage on a separate geological Pleistocene island bank platform and is noncontroversial in that most widespread Philippine vertebrate groups possess distinct species on separate PAICs (Brown et al. 2000a, 2013a, 2016; Brown and Diesmos 2002, 2009).

## RESULTS

### Definition of *Sanguirana* and Assignment of Taxa

We follow the Fuiten et al. (2011) definition of the genus *Sanguirana*, and we place taxa in this genus based on phylogenetic evidence (Brown et al. 2016) and possession of diagnostic character states. Members of the genus can be distinguished from all other Philippine ranids (Inger 1954; Diesmos et al. 2015) by the following combination of shared characters: (1) thin, elongate body; (2) extremely expanded terminal digital disks with circummarginal grooves; (3) elongate nuptial pad, covering nearly entire medial portion of the first digit (Finger II), present (most species) or absent (*S. sanguinea*); (4) absence of vocal sacs; (5) posterior abdomen coarsely glandular; and (6) absence of humeral glands (Boulenger 1882; Inger 1954; Taylor 1920; Brown et al. 2000a; Fuiten et al. 2011).

Taxonomic Reappraisal of *Sanguirana albotuberculata* (Inger 1954) and *Rana mearnsi* Stejneger 1905

In considering the status of West Visayan faunal region species, we clarify the boundary between populations now referred to *Sanguirana everetti* (a taxon now restricted to western Mindanao Island; Fig. 1A; Brown et al. 2016: Fig. 1) versus its sister species *S. albotuberculata* (Inger 1954; Brown et al. 2000a) of Leyte, Samar, and eastern Mindanao islands (Diesmos et al. 2015) and the unnamed evolutionary lineage of the West Visayan islands. Confusion has resulted from Taylor's (1920) referral of the Negros population to *Rana mearnsi* Stejneger 1905, combined with Inger's placement of *Rana mearnsi* in synonymy with *R. everetti everetti* Boulenger 1882. Additionally, in the same work, Inger (1954) named the northeast Mindanao faunal region lineage as a new subspecies, *Rana everetti albotuberculata*. We assume that the combination of these actions has resulted in a historical delay in what might otherwise have been a natural reconsideration of priority with regard to available names for the eastern Mindanao, Leyte, and Samar evolutionary lineage.

As a result of the Brown et al. (2016) phylogenetic study, we have no doubt that *Sanguirana mearnsi* Stejneger 1905 has priority over, and is thus the valid name that must be substituted for (a nomen substitutum), the northeast Mindanao PAIC species currently referred to as *S. albotuberculata* (Inger 1954; Brown et al. 2000a; Diesmos et al. 2015). We base this name substitution on the chronological order of relevant publications and because several lines of evidence indicate the names *Rana mearnsi* Stejneger 1905 and *R. everetti albotuberculata* Inger 1954 refer to the same evolutionary lineage.

First, the distribution of the species from the northeast Mindanao PAIC is now very well documented (Fig. 1A; Brown et al. 2016: Fig. 1; Sanguila et al. 2016), with genetically confirmed identities of fresh samples from northern and central Samar Island, at numerous sites through Leyte Island, and from sites along the northeast coastal mountains of eastern Mindanao to the southeast corner of the island (Brown et al. 2016: Fig. 1). Second, the type locality of *Rana mearnsi* Stejneger 1905 (Baganga River, Eastern Mindanao; >300 m above sea level; Stejneger 1905; Cochran 1961) falls without any uncertainty within this geographical span of genetically confirmed localities (Fig. 1A). Third, the distributions of *S. everetti* (southwest Mindanao) and "*S. albotuberculata*" (= *S. mearnsi*) are now well circumscribed, confirmed with documented genetic sampling, and demonstrably do not overlap (Fig. 1A). Fourth, the *Rana mearnsi* Stejneger 1905 holotype (USNM 35258) is indistinguishable morphologically from similarly sized "*S. albotuberculata*." Finally, we note that Stejneger's (1905) original description mentions character states used by Inger (1954) to diagnose *R. e. albotuberculata* from *R. e. everetti* (distinct, fleshy glandular dorsolateral folds, prominent "pustules" [termed "asperities" in Inger 1954; see Brown et al. 2000a: Fig. 5B; Fig. 2A] on the head, trunk, and eyelids). Admittedly, the poor state of preservation of the *Rana mearnsi* holotype (USNM 35258; preserved in blackberry brandy, brittle, and broken into multiple pieces; as originally reported by Stejneger 1905) now prevents



FIG. 2.—Live male (A) and female (B) *Sanguirana mearnsi* (formerly *S. albotuberculata* [Inger 1954; Brown et al. 2000a, 2016]) from the municipalities of (A) Burauen, Leyte Island, Leyte Province (deposited at KU; RMB Field No. 21807; Photo by J. Fernandez), and (B) Gingoog City, Mindanao Island, Misamis Oriental Province (KU 333014; Photo by RMB). Note thickened dorsolateral dermal folds and rugose texture of skin (the result of densely distributed keratinized asperities) in males (both character states reduced in female) and the distribution of green pigment throughout dorsal surfaces of males (limited to ventrolateral surfaces in females). A color version of this figure is available online.

evaluation of some previously emphasized character states (Taylor 1920; Inger 1954; Brown et al. 2000a). These include the distribution of pustules/asperities on lateral surfaces of the head, the shape of the nuptial pad, morphometric variation, and live color or dorsum, thick dorsolateral folds, and infracloacal tubercles (Inger 1954; Brown et al. 2000a). However, all other evidence points to a single hypothesis.

In summary, despite the absence of genetic material from the exact type locality, the multiple lines of evidence discussed above, plus examination of the relevant name-bearing types, convinces us that *Rana mearnsi* Stejneger 1905 has priority over *Rana everetti albotuberculata* Inger 1954 and that *Sanguirana mearnsi* (Stejneger 1905) is the first available, valid name to be applied correctly to populations of the Stream Frogs (Fig. 2) from the northeast Mindanao PAIC (Leyte, Samar, eastern Mindanao, and most likely Bohol islands). In addition to *Rana everetti albotuberculata* Inger 1954, *Rana dubita* Taylor

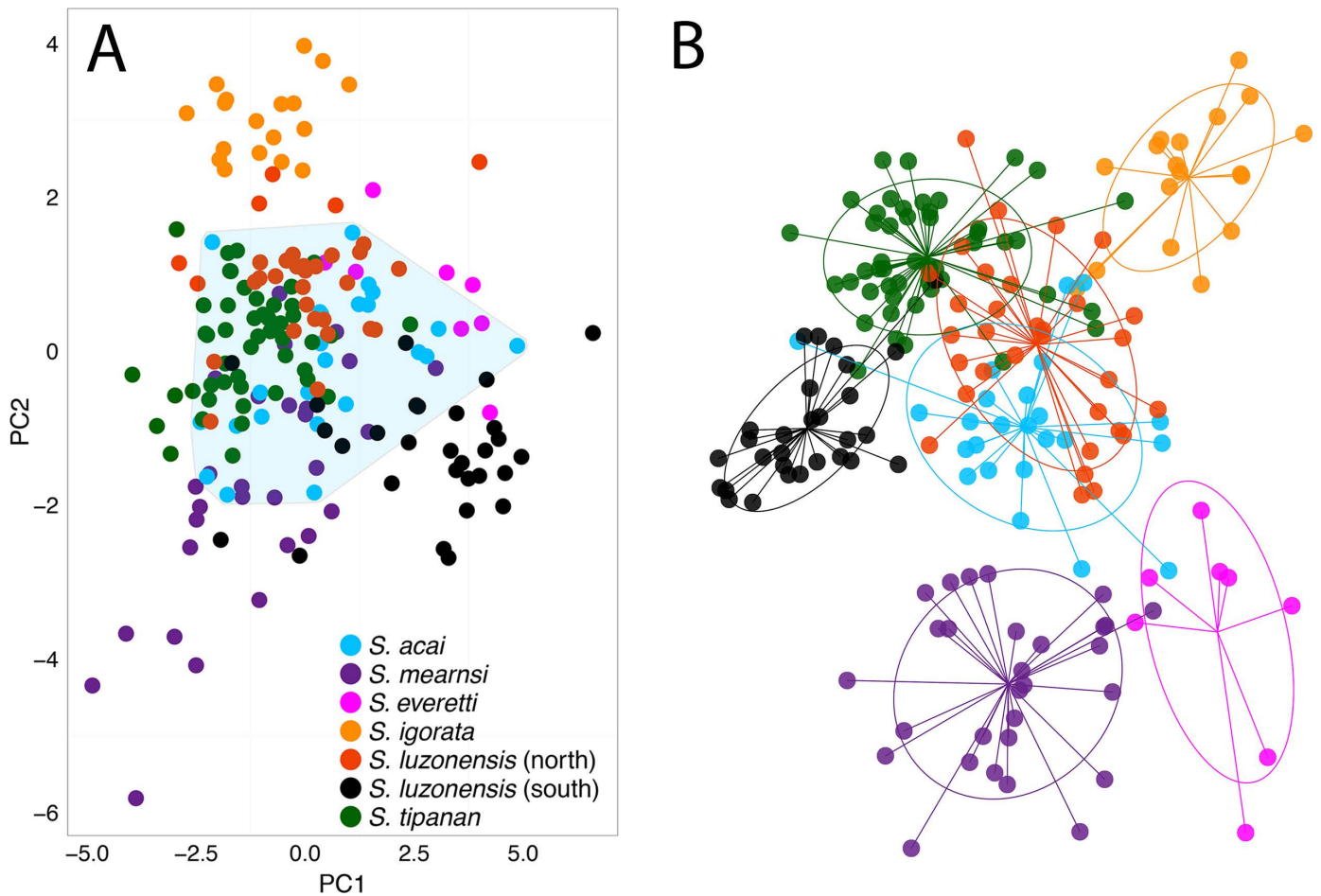


FIG. 3.—Bivariate ordination of first two components from a principal components analysis (PCA; A) and subsequent discriminant analysis of principal components (DAPC; B) for 14 continuously varying morphometric variables (males only) selected by each variable's within-species/OTU linear coefficient when regressed against snout-vent length (SVL). Character loadings (Table 1) indicate that distal limb dimensions contributed disproportionately to PC1 whereas dimensions related to head length contributed heavily to dispersion along PC2. See text for character definitions; pale polygon encompassing *S. acai* points added to the PCA plot (A) for emphasis; inertia ellipses included in the DAPC plot (B) for emphasis. A color version of this figure is available online.

1920 (Type locality: Bunawan, eastern Mindanao) is also hereby placed in synonymy with *Sanguirana mearnsi* (Stejneger 1905).

Taylor's (1920) assignment of the name *Rana mearnsi* to the West Visayan population (Negros Island) clearly was in error, as noted correctly by Inger (1954). However, despite the fact that he identified Taylor's lapsus, Inger (1954) did not formally act on the distinctiveness of the new species from Negros, Masbate, and Panay islands. Given the limited appreciation of among-faunal region variation at that time (most Mindanao and Negros records were referred to "*Rana everetti everetti*"; Taylor 1922; Inger 1954), it is understandable that Inger (1954) conservatively discounted the validity of *R. mearnsi*, placed it in synonymy with *R. e. everetti*, and described the (same) species as *R. e. albotuberculata*.

Furthermore, remarking on the paucity of available specimens, Inger (1954:310) stated: "The Negros specimens cannot be placed in any of the defined subspecies with any reasonable degree of assurance." Acknowledging Inger's (1954) powers of observation and that his conservative

approach set the stage for this study, below we define the unassigned population as a new species.

#### Continuously Varying Morphological Variation

Due to the similarity between the quantitative and qualitative results for separately analyzed male and female specimens, we report the details of the results for analyses of males only. Although it took 10 principal components (PCs) to account for >95% of the total variance, the first four PCs each had eigenvalues of more than 1.0 and together accounted for 75% of the total variance (Table 1). The first principal component (PC1) loaded heavily on the lengths of femur, tibia, tarsus, and feet, indicating that differences in lower hindlimb morphology were responsible for most of the variance (29.5%). The second (PC2; 19.5%) loaded heavily on characters pertaining to head morphology (head length, snout length, tympanic annulus diameter) whereas PC3 and PC4 (26%) had significant loadings for the characters SVL, head width, forearm length, and nuptial pad lengths. Ordination of the first two components showed taxon-based group structure evident in partial separation between *S. everetti* versus *S. igorata*, *S. tipanan*,



FIG. 4.—Adult male *Sanguirana acai* (paratype PNM 9807) and female (paratopotype KU 326383) in dorsal (A) and ventral (B) views. Scale bars = 5 mm. A color version of this figure is available online.



FIG. 5.—Details of the palmar surfaces of the hand in *Sanguirana acai* (A, male paratype PNM 9807; B, female paratopotype KU 326383) and plantar surface of foot (C, D, same specimens). Scale bars = 5 mm. A color version of this figure is available online.

and *S. mearnsi* along the PC1 axis. The PC2 axis exhibited separation between both *S. mearnsi* and *S. luzonensis* South from both *S. everetti* and *S. igorota* (Fig. 3A); additionally, *S. tipanan* is distinct from *S. igorota* along this axis. The new species clustered broadly in morphospace with *S. mearnsi*, *S. luzonensis* North, and *S. tipanan* (Fig. 3A) along both axes and, to a lesser extent with *S. everetti* and *S. luzonensis* South. The DAPC analysis discriminated between groups, as expected, and supported *S. mearnsi*, *S. everetti*, and *S. igorota*, and as distinct clusters, whereas the new species and *S. luzonensis* North overlapped broadly and the new species further overlapped minimally with *S. tipanan* and *S. luzonensis* South (Fig. 3B).

Results of ANOVAs were highly significant ( $P > 0.0001$ ) for all 14 characters, and Tukey tests (or Tukey–Kramer tests) detected differences among means of West Visayan “*S. everetti*” and at least four (northern *S. luzonensis*) to as many as all 14 (*S. sanguinea*) characters per species pair comparison.

#### Phylogenetic Relationships

The available multilocus estimate of phylogeny (Fig. 1B; Brown et al. 2016) has demonstrated the phylogenetic distinctiveness of the West Visayan islands (Negros, Masbate, and Panay) population, which is not closely related to *S. everetti* (the species with which it has long been confused). Instead, this newly discovered lineage is the sister lineage to a well-supported clade consisting of *S. igorota*, *S. tipanan*, and two clades referred to *S. luzonensis* (Fig. 1B; Brown et al. 2016). This strongly supported estimate of genealogical affinities bolsters the recognition of the new species as distinct from all OTUs considered here and leaves us with no doubt that that the West Visayan islands “*S. everetti*” populations constitute a valid species, new to science. For reference, mitochondrial uncorrected genetic distances between the new species and all congeners range from 6.4–12.1 (Table 2), which are equivalent to or exceed those typically observed between morphologically and acoustically well-differentiated anuran lineages (e.g., *Pulchrana moellendorffi* vs. *P. mangyanum*

TABLE 1.—Character loadings for principal components (PC) analysis of 14 continuously varying morphometric characters, selected (from 19 total) on the basis of each variable’s within-species/operational taxonomic unit (OTU) regression coefficient (regressed against snout–vent length [SVL]). Heavily loading characters in PC1 (lower limb dimensions) and PC2 (head shape), contributing disproportionately to group structure (see Fig. 1A), are bolded for emphasis.

Character	PC1	PC2	PC3	PC4	PC5	PC6	PC7	PC8	PC9
SVL	0.172	−0.088	−0.434	0.058	−0.378	0.3934	−0.320	0.428	−0.324
Head length	0.202	<b>−0.417</b>	0.182	0.340	0.186	0.1077	−0.053	0.024	0.113
Snout length	0.231	<b>−0.423</b>	0.138	0.084	0.148	0.2394	0.257	0.078	0.270
Tympanic annulus diameter	0.126	<b>−0.475</b>	−0.224	0.204	−0.068	−0.0116	−0.119	−0.050	0.160
Head width	0.133	0.160	0.423	0.359	0.201	−0.0735	−0.100	0.451	−0.44
Forearm length	−0.028	<b>−0.358</b>	0.392	−0.008	−0.261	−0.2412	−0.032	−0.250	−0.431
Femur length	<b>0.419</b>	0.065	0.099	−0.327	0.090	0.0724	−0.100	−0.188	−0.209
Tibia length	<b>0.416</b>	−0.118	−0.085	−0.232	−0.017	−0.087	−0.127	−0.374	−0.254
Tarsus length	<b>0.380</b>	0.078	−0.066	0.015	0.000	−0.7022	−0.230	0.310	0.317
Foot length	<b>0.422</b>	0.172	−0.127	−0.064	−0.084	0.055	0.072	−0.048	0.136
Hand length	<b>0.311</b>	0.179	−0.235	0.226	0.172	0.005	0.693	−0.007	−0.251
Nuptial pad length	0.156	0.068	0.406	−0.126	−0.705	0.089	0.319	0.189	0.224
Toe IV disc width	0.212	0.283	0.345	−0.051	0.229	0.443	−0.334	−0.078	0.240
Finger III disc width	0.064	0.299	−0.035	0.685	−0.306	−0.004	−0.167	−0.476	0.078
Standard deviation	2.02	1.65	1.61	1.07	0.83	0.71	0.68	0.67	0.64
Proportion	0.292	0.195	0.184	0.082	0.049	0.036	0.039	0.032	0.029
Cumulative	0.292	0.487	0.671	0.753	0.802	0.837	0.870	0.901	0.931



TABLE 2.—Uncorrected percent sequence divergence for mitochondrial data (12S–16S) among species of the genus *Sanguirana*. Intraspecific mitochondrial sequence divergences along the diagonal are bolded for emphasis; note intraspecific divergence within *S. acai* (Negros vs. Panay populations).

	<i>S. acai</i>	<i>S. mearnsi</i>	<i>S. aurantipunctata</i>	<i>S. everetti</i>	<i>S. igorota</i>	<i>S. luzonensis</i>	<i>S. sanguinea</i>	<i>S. tipanan</i>
<i>S. acai</i>	<b>0.0–6.3</b>							
<i>S. mearnsi</i>	6.8–9.9	<b>0.1–1.8</b>						
<i>S. aurantipunctata</i>	9.0–10.9	6.7–9.0	<b>4.5</b>					
<i>S. everetti</i>	8.0–9.1	4.0–5.9	8.4–9.3	<b>0.1–0.6</b>				
<i>S. igorota</i>	6.4–7.8	6.4–8.7	9.0–10.3	7.3–8.2	<b>0.9</b>			
<i>S. luzonensis</i>	6.0–7.3	5.3–8.3	8.6–9.7	7.0–7.7	4.1–5.0	<b>0.6–3.5</b>		
<i>S. sanguinea</i>	10.8–12.1	10.3–12.1	12.2–13.1	10.6–11.5	11.3–12.0	10.8–11.2	<b>5.8</b>	
<i>S. tipanan</i>	6.8–7.8	5.6–8.4	9.1–10.1	7.7–8.3	1.6–1.9	4.1–5.3	11.7–12.0	<b>0.3</b>

[Brown and Siler 2013]; *Sanguirana igorota* vs. *S. luzonensis* [Brown et al. 2016]).

#### Justification for the Recognition of a New Lineage-based Species

The new species clearly is distinct in multivariate space from *S. everetti*, *S. igorota*, *S. mearnsi*, and southern populations of *S. luzonensis*. With respect to these species/OTUs, continuous variation of mensural body proportions demonstrated discernable group structure (which lends support to the recognition of the new taxon, emphasizing its distinctiveness from most congeners). Separation was not observed between the new species and northern *S. luzonensis* populations or between the new species and *S. tipanan* (Fig. 3B). These allopatric northern Luzon populations are, however, readily diagnosed from the new species on the basis of fixed color characters (see Diagnosis and Table 3).

The results of our previous phylogenetic analysis (demonstrating the nonmonophyly of populations currently referred to *S. everetti* and demonstrating the distinctiveness of the West Visayan lineage from Luzon populations) require the recognition of the new taxon. The fact that the monophyletic West Visayan PAIC *Sanguirana* overlaps broadly in morphospace with some Luzon taxa (northern populations of *S. luzonensis* and *S. tipanan*) does not deter us from recognizing it as a new species. This is because (1) it is the monophyletic, strongly supported sister clade to a large clade of three or four differentiated Luzon taxa (and not closely related to *S. everetti*, the species with which it has long been confused), and (2) it is isolated biogeographically on the geologically separate West Visayan PAIC, which has never been connected to the Luzon PAIC. Thus, even without diagnostic continuously varying morphological traits which distinguish it from all congeneric populations, we are comfortable recognizing this allopatric, genetically distinct evolutionary lineage as a taxon in which speciation has not been accompanied by complete differentiation in continuously varying morphological characters. However, in addition to the above, we have identified fixed diagnostic coloration characters (Table 3) that, together with phylogenetic and biogeographic evidence, support the recognition of the West Visayan PAIC (Negros, Masbate, and Panay islands) populations of “*Sanguirana everetti*” as a new species, to be known as:

*Sanguirana acai* sp. nov.  
(Figs. 4–7)

*Rana mearnsi* Stejnegeri (1905): Taylor (1920: 251), in part. [misidentification].

*Rana everetti* Boulenger (1882): Sison et al. (1995: 48). [misidentification].

*Rana cf everetti*: Ferner et al. (2000: 12). [misidentification].  
*Rana everetti everetti* Boulenger (1882): Inger (1954: 310–311), in part; Brown et al. (2000a: 85), in part. [misidentification].

*Sanguirana everetti* (Boulenger 1882): Fuiten et al. (2011: 99); Frost (2016). [misidentification].

**Holotype.**—Adult male (PNM 9800, formerly KU 326381; Field Number RMB 3249), collected by RMB and V. Yngente at 1745 hr on 14 April 2001, in the Philippines, Negros Island, Negros Oriental Province, Municipality of Valencia, Barangay Bongbong, below “Camp Lookout,” in a forested stream (“Maite Creek”) at 500 m elevation above sea level on Mt. Talinis, Cuernos de Negros Mountain Range (9.2667°N, 123.2062°E; Datum = WGS84).

**Paratypes (paratopotypes).**—Three adult males (TNHC 62794–96), adult male and female (KU 326382, 326383), all with same collection data as holotype; two adult males (USNM 228387 and CM 116128), same locality, collected by C.A. Ross, 15 March 1981, and 10 August 1987, respectively.

**Other paratypes.**—Adult female (CAS-SU 16398), collected by W.C. Brown, A.C. Alcalá, and D. Empeso, 15 August 1954, Negros Island, Negros Oriental Province, Municipality of Valencia, 4–5 km west of Valencia town, east side Cuernos de Negros Mountain Range, Maite River Gorge; adult female (CAS 131883), collected by Q. Alcalá, 16 August 1963, same locality; five adult males (CAS 18144–48), collected by D. Empeso, 28 April 1957, Municipality of Dauin, 15 km north of Dauin Town, southwest side of Cuernos de Negros Mountain Range; three adult males and an adult female (TNHC 62797, 62798, KU 326382, and 326383) and two juveniles of undetermined sex (KU 326384, 326885), collected by RMB and V. Yngente, 14 April 2001, Municipality of Valencia, Sitio Nasuji, Cuernos de Negros Mountain Range, Mt. Talinis, 1150 m, PNOC/EDC watershed area; two adult males (TNHC 62798, 62799), collected by RMB and V. Yngente, 2 December 2001; one adult male (USNM 228440), collected by C.A. Ross, 21 March 1980, and four adult females and two immature males (CAS 137498–503), collected by L.C. Alcalá and party, 19–23 September 1972, Municipality of Sibulan, Barangay Janya-janya, Sitio Balinsasayo, Cuernos de Negros Mountain Range, Mt. Talinis 850–900 m above sea level, Lake Balinsasayo; three adult males (CAS 138144, 147326, 147327), collected by Q. Alcalá and party, 19–20 January 1964, Municipality of Palaypay, Barangay Pamplona; two immature males (CAS 147328, 147329), and two adult males (CAS 147330, 147331), collected by A. C. Alcalá and party,

TABLE 3.—Distribution of selected diagnostic morphological characters in *Sanguirana acaci* and all known congeners (+ = present, - = absent, +/- = variable). Geographical distribution and ranges of body sizes (males, females: snout-vent length [SVL] in mm) are included for reference. Selected diagnostic mensural characters (expressed relative to body size, SVL; range, followed by  $\bar{X} \pm 1$  SD), are included when comparison of ranges among the new species and one or more congeners (see text and Table 4, for details) contributed to recognition of the new species in the form of discrete character differences (Comparisons section).

Character	<i>S. acaci</i>	<i>S. everetti</i>	<i>S. luzonensis</i>	<i>S. arantipinactata</i>	<i>S. tipanan</i>	<i>S. igorota</i>	<i>S. mearnsi</i>	<i>S. sanguinea</i>
Range	Negros, Masbate, Panay	W. Mindanao	Luzon PAIC	Montane central Luzon	NE Luzon	NW Luzon	E. Mindanao, Samar, Leyte	Palawan PAIC
Male SVL	45.8–57.6	61.7–79.5	43.4–67.1	47.3–53.7	46.0–53.5	49.6–58.3	58.3–68.6	36.3–42.8
Female SVL	62.6–80.3	73.6–86.6	66.5–82.2	59.1–86.3	62.3–80.1	67.6–81.7	63.8–85.9	61.3–71.1
Flank coloration	Sharp dark-light stratification	Dark-light gradient	Dark-light gradient	Green-purple stratification	Green with brown reticulum	Green with brown blotches	Green-yellow gradient	Light to dark brown
Dorsal asperities	-	-	-	-	+, fine	+, fine	+, coarse	-
Dark pectoral patches	+	-	-/+	-	-	-	-	-
Infralacral tubercles	-	+	-	+	+	+	+	-
Dorsal color	Yellow, green, tan, or light gray	Light green	Brown, yellow, green, tan, or light gray	Bright green-yellow with black flecks or orange spots	Iridescent green or golden, with brown reticulum	Bright green with dark spots	Dark green with yellow dorsolateral tubercles	Tan, reddish-orange, or brown
Tympanum translucent	-	-	-	-	+	-/+	-	-
Tibial bars	+	-/+	+	-	+	+	-	+
Forearm bars	-	+	+	-	+	+	-	+
Large dark dorsal spots	-	-/+	-	-	-/+	-/+	-	-
Dark lateral head color	+	Canthal stripe	Canthal stripe	-	Canthal stripe	Canthal stripe	Canthal stripe	Canthal stripe
Snout	Rounded	Rounded	Pointed	Rounded	Rounded	Squarish	Rounded	Pointed
Ventrum tuberculate	Limited to groin	Groin	Groin	Throughout	Groin	Groin	Groin	-
Dorsolateral ridges	Thin to indistinct	Indistinct	Indistinct	Indistinct to moderate	Indistinct to moderate	Moderate	Thick, fleshy	Moderate
Subarticular tubercles	Light on dark plantar foot surface	Variable on dark	Variable on dark	Light on light	Light on light	Light on light	Light on light	Light on light
Snout/SVL	0.16–0.21 (0.19 ± 0.02)	0.16–0.18 (0.17 ± 0.01)	0.16–0.24 (0.20 ± 0.01)	0.15–0.17 (0.16 ± 0.05)	0.16–0.20 (0.18 ± 0.01)	0.14–0.16 (0.17 ± 0.04)	0.15–0.19 (0.17 ± 0.02)	0.17–0.19 (0.18 ± 0.01)
Head width/SVL	0.28–0.33 (0.31 ± 0.02)	0.31–0.33 (0.32 ± 0.01)	0.32–0.38 (0.34 ± 0.02)	0.33–0.38 (0.35 ± 0.01)	0.31–0.36 (0.34 ± 0.01)	0.30–0.36 (0.33 ± 0.03)	0.29–0.33 (0.31 ± 0.10)	0.31–0.33 (0.32 ± 0.01)
Forearm/SVL	0.22–0.30 (0.26 ± 0.02)	0.18–0.23 (0.20 ± 0.02)	0.18–0.31 (0.25 ± 0.02)	0.20–0.27 (0.21 ± 0.01)	0.19–0.26 (0.23 ± 0.01)	0.18–0.23 (0.21 ± 0.01)	0.18–0.22 (0.21 ± 0.01)	0.19–0.22 (0.21 ± 0.03)
Tibia/SVL	0.58–0.68 (0.63 ± 0.03)	0.57–0.66 (0.62 ± 0.03)	0.53–0.70 (0.17 ± 0.04)	0.52–0.57 (0.54 ± 0.01)	0.52–0.62 (0.57 ± 0.02)	0.54–0.61 (0.57 ± 0.02)	0.52–0.69 (0.57 ± 0.02)	0.59–0.67 (0.63 ± 0.03)
Nuptial pad/SVL	0.10–0.15 (0.13 ± 0.02)	0.11–0.16 (0.14 ± 0.02)	0.13–0.19 (0.16 ± 0.01)	0.12–0.16 (0.14 ± 0.01)	0.11–0.17 (0.14 ± 0.01)	0.11–0.16 (0.15 ± 0.01)	0.13–0.16 (0.14 ± 0.02)	0.16–0.18 (0.17 ± 0.03)
Female:male SVL	1.3–1.4 (1.4 ± 0.0)	1.2–1.5 (1.4 ± 0.0)	1.3–1.4 (1.3 ± 0.1)	1.3–1.4 (1.3 ± 0.0)	1.3–1.5 (1.4 ± 0.1)	1.1–1.1 (1.1 ± 0.0)	1.1–1.2 (1.2 ± 0.0)	1.8–2.1 (2.0 ± 0.5)

TABLE 4.—Results of Tukey post hoc tests (or Tukey–Kramer tests, for unequal sample sizes,) on individual morphometric characters, testing the hypothesis of no difference between means of *Sanguirana acai* mensural characters versus those eight other OTUs (all considered full species except northern vs. southern populations of *S. luzonensis*; see text for details). Table entries include difference between sample means (negative sign indicates comparisons in which congener means were large than those of *Sanguirana acai*) and *P*-values (in parentheses). Bolded text indicates significant differences.

	<i>S. igroria</i>	<i>S. nearnsi</i>	<i>S. everetti</i>	<i>S. tymanan</i>	<i>S. luzonensis</i> –South	<i>S. luzonensis</i> –North	<i>S. aramithipunctata</i>	<i>S. sanguirana</i>
SVL	<b>-0.0491 (0.4245)</b>	<b>0.1218 (&lt;0.0001)</b>	<b>0.2355 (&lt;0.0001)</b>	<b>-0.1191 (&lt;0.0001)</b>	0.0290 (0.8366)	-0.0542 (0.1512)	-0.0857 (0.0056)	<b>-0.3320 (&lt;0.0001)</b>
Head length	<b>-0.0522 (&lt;0.0001)</b>	0.0080 (0.98124)	-0.0285 (0.41816)	0.0079 (0.9707)	<b>0.0641 (&lt;0.0001)</b>	-0.0120 (0.8647)	<b>-0.1549 (&lt;0.0001)</b>	<b>-0.2945 (&lt;0.0001)</b>
Snout length	<b>-0.0891 (&lt;0.0001)</b>	-0.0045 (0.9997)	0.0084 (0.9991)	0.0037 (0.9987)	<b>0.1186 (&lt;0.0001)</b>	0.0126 (0.9393)	<b>-0.1533 (&lt;0.0001)</b>	<b>-0.3194 (&lt;0.0001)</b>
Tympanum diam.	<b>-0.3009 (&lt;0.0001)</b>	<b>0.1705 (&lt;0.0001)</b>	0.0285 (0.9998)	<b>-0.0776 (0.0008)</b>	<b>0.1450 (&lt;0.0001)</b>	-0.0547 (0.0965)	<b>-0.2762 (&lt;0.0001)</b>	<b>-0.2677 (&lt;0.0001)</b>
Head width	<b>0.0674 (&lt;0.0001)</b>	0.0033 (0.9999)	0.0427 (0.0767)	<b>0.0648 (&lt;0.0001)</b>	<b>0.0496 (0.0005)</b>	<b>0.0499 (0.0003)</b>	0.0492 (0.2131)	<b>-0.2929 (&lt;0.0001)</b>
Forearm length	-0.0443 (0.2660)	<b>-0.0019 (0.9999)</b>	<b>-0.1441 (&lt;0.0001)</b>	<b>0.1097 (&lt;0.0001)</b>	<b>0.1569 (&lt;0.0001)</b>	-0.0249 (0.7621)	<b>-0.0715 (0.0340)</b>	<b>-0.3430 (&lt;0.0001)</b>
Femur length	-0.0159 (0.8951)	<b>-0.1034 (&lt;0.0001)</b>	<b>0.0588 (0.0156)</b>	<b>0.0660 (&lt;0.0001)</b>	<b>0.0405 (0.0126)</b>	<b>-0.0400 (0.1144)</b>	-0.1422 (<0.0001)	<b>-0.3159 (&lt;0.0001)</b>
Tibia length	<b>-0.0794 (&lt;0.0001)</b>	<b>-0.0602 (&lt;0.0001)</b>	<b>0.0515 (0.0395)</b>	<b>-0.0826 (&lt;0.0001)</b>	0.0265 (0.2335)	<b>-0.0571 (&lt;0.0001)</b>	-0.1975 (<0.0001)	<b>-0.3037 (&lt;0.0001)</b>
Tarsus length	-0.0187 (0.9477)	<b>-0.0224 (0.8068)</b>	<b>0.0887 (0.0050)</b>	<b>-0.0457 (0.0322)</b>	0.0248 (0.7216)	0.0027 (0.9999)	<b>-0.1261 (0.0005)</b>	<b>-0.2757 (&lt;0.0001)</b>
Foot length	-0.0163 (0.9721)	-0.0579 (0.0073)	<b>0.1038 (0.0004)</b>	<b>-0.1130 (&lt;0.0001)</b>	0.0223 (0.8080)	-0.0131 (0.9806)	<b>-0.107 (0.0069)</b>	<b>-0.2845 (&lt;0.0001)</b>
Hand length	<b>-0.0425 (0.3602)</b>	-0.0144 (0.9842)	<b>0.1411 (&lt;0.0001)</b>	<b>-0.0716 (0.00035)</b>	-0.0322 (0.5559)	-0.0198 (0.9185)	0.0413 (0.5065)	<b>-0.5215 (&lt;0.0001)</b>
Nuptial pad length	<b>0.0710 (0.0454)</b>	<b>-0.0704 (0.0153)</b>	-0.0476 (0.7170)	-0.0082 (0.9994)	<b>0.0985 (&lt;0.0001)</b>	<b>0.0651 (0.0272)</b>	-0.0533 (0.3422)	<b>-0.1489 (0.0008)</b>
Toe IV disc	<b>0.1474 (0.0008)</b>	<b>-0.2643 (&lt;0.0001)</b>	0.0728 (0.6940)	0.0082 (0.9999)	<b>-0.1130 (&lt;0.0001)</b>	0.0425 (0.8035)	-0.0567 (0.5125)	<b>-0.2476 (&lt;0.0001)</b>
Finger III disc	<b>0.0860 (0.0476)</b>	0.06636 (0.1283)	0.0413 (0.9275)	-0.0039 (0.9999)	<b>-0.0716 (0.0003)</b>	0.0448 (0.5473)	<b>0.1939 (0.0004)</b>	<b>-0.9838 (&lt;0.0001)</b>

21 December 1960, Pamplona town, east bank of Pinanlayan River; adult female (CAS-SU 19541), collected by A.C. Alcala and party, 27 December 1958, Municipality of Siaton, Bantolinao, 4 km NW of Bondo Barrio; adult male (CAS 139275), collected by L.C. Alcala and party, 11 April 1962, Negros Occidental Province, Municipality of Biak na bato, 6 km. N.W. Biak na Bato town, above Sition Tinago; adult and immature male (CAS 185565, 185566), collected by L.C. Alcala and party, 11 April 1962, Negros Occidental Province, Municipality of Tuyom, Bagtik River; three adult males and two adult females (CAS-SU 18134–38), collected by A.C. Alcala and Q. Alcala, 12–21 April 1957, Municipality of Tuyom, 17 km SW of Tuyom town, Bagtik River; adult female (PNM 9801, formerly KU 323855), collected by CDS, M. Yngente, V. Yngente, and J. Fernandez, 16 July 2009, Municipality of Silay City, Barangay Patag, Mt. Bungol; two adult males and a juvenile of undetermined sex (PNM 9802, 9803 [formerly KU 323860, 323862], and KU 323918); six adult males and one adult female (KU 323861, 323864, 323866–70), same locality and collectors, 21 July 2009; three adult males (KU 323873–75), an adult male, and two juvenile of undetermined sex (PNM 9804–06 [formerly KU 323863, 323865, 323871]), same collectors, 24 July 2009, same locality; three adult males (PNM 9807–09, formerly KU 323872, 323876, and 323886), two adult males and two adult females (KU 323877–80), same collectors, 25 July 2009, same locality; two adult females and three adult males (KU 323881–85), and two adult males, and a juvenile of undetermined sex (KU 323887, 323888, 323918), collectors, 26 July 2009, same locality; two adult males (PNM 1372, 1373), collected by R.V. Sison, August 1991, Panay Island, Aklan Province, Municipality of Libacao Nacolon, Barangay Rosal, Sitio Belen; 22 males (PNM 3800–03, 3806–15, 3817–24), collected by R.V. Sison, 27 February 1994, Antique Province, Municipality of San Remigio, Barangay Aningalan, Sitio Iganyao; two adult females and two adult males (KU 306863–66), collected by CDS, 13–15 March 2006, same locality; adult female (PNM 3913), collected by R.V. Sison, 12 March 1994, Tipuluan Mountain Range; immature female (PNM 8527), collected G. Operiano, 15 May 2004, Municipality of Sebaste, Barangay Alegre; adult male (PNM 8550), collected by N. Paulino, 18 April 2004, Municipality of Pandan, Sition Nanling.

**Other referred specimens.**—Immature male (CAS 124213), collected by L.C. Alcala and party, 6 May 1969, Calagna-an Island, Iloilo Province, Municipality of Carles, Barangay Barangalan; three adult males (CAS 144267, CAS 144269, and USNM 305499), collected by L.C. Alcala and party, 13–14 June 1976, Masbate Island, Masbate Province, Municipality of Mobo, “Mapuyo Barrio, Pulangkahoy”; two juvenile specimens of undetermined sex (FMNH 61530, 61531), collected by D.S. Rabor, 25 May 1949, on Negros Island.

**Diagnosis.**—*Sanguirana acai* differs from all other members of this Philippine endemic genus by the (1) presence of dark pigmentation covering the majority of lateral head surfaces (vs. absence or presence but limited to a canthal stripe); (2) absence of dark color pattern on dorsum and dorsolateral body surfaces (vs. presence); (3) presence of an abrupt dark-above, light-below color stratification (abrupt transition) on the flanks, the position of which is marked with



FIG. 6.—*Sanguirana acai* in life (from the Municipality of Valencia, southern Negros Island): (A) adult male holotype (PNM 9800); (B) adult female paratopotype (KU 326383). Photos by RMB.

a dark brown line or row of dark spots (vs. absence of abrupt stratification, transition gradual); (4) presence of transverse dark bars on hind limbs but indistinct on forearms (vs. absence or presence on both); (5) presence of uniquely dark plantar surfaces of hand and foot, with bright white subarticular and supernumerary tubercles (vs. more uniformly pigmented ventral hand and foot surfaces); and (6) presence of boldly patterned, contrasting dark humeral patches (vs. absence or indistinct).

**Comparisons.**—The critical comparisons for the diagnosis of the new species are to the distantly allopatric and unrelated *Sanguirana everetti*, the taxon with which it has long been confused taxonomically, and *S. luzonensis*, the species to which it is most-closely related (Brown et al. 2016: Fig. 1B), geographically most proximate, and phenotypically most similar. From *S. everetti* the new species differs by its much smaller, nonoverlapping body size (Tables 3, 4) and by the absence of greatly enlarged infraclacal tubercles (vs. presence in >90% of specimens); from *S. everetti* and *S. luzonensis* by the presence of abruptly stratified flank coloration (vs. absence), presence of distinct white subarticular tubercles (Fig. 5A, B) on dark brown palmar and plantar surfaces of the hand and foot in males (vs. tubercle color similar to palmar and plantar surfaces of hands and feet), and presence of bold humeral patches (vs. diffuse,



FIG. 7.—*Sanguirana acai*, in life, photographed in the Municipality of Sebaste, Antique Province, Panay Island (specimen not collected) in the species, typical, stream-side vegetation perch microhabitat. Photo by MG. A color version of this figure is available online.

indistinct or absent; Fig. 4B). Relative forearm length nearly distinguishes the new species from *S. everetti* and its relatively narrower head width abuts, but does not overlap, the range of variation observed in *S. luzonensis* (Tables 3, 4). *Sanguirana acai* is distinguished from *S. tipanan*, *S. igorota*, and *S. mearnsi* by the absence of dermal asperities on dorsal and lateral body surfaces (vs. presence; Brown et al. 2000a: Fig. 4), the presence of yellow, tan, or light gray dorsal ground coloration (vs. iridescent green, with a brown reticulum in *S. tipanan* [Brown et al. 2000a: Fig. 3C,D], vibrant dark green with large dark brown ocelli or purplish spots in *S. igorota* [Brown et al. 2012a: Fig. 31] or metallic bright green with bright yellow dorsolateral folds in *S. mearnsi* [Diesmos et al. 2015: Fig. 39F]); further, from *S. igorota*, the new species differs by its relatively shorter snout and forearm (Tables 3, 4) and from *S. mearnsi* by its relatively shorter forearm, by the absence of greatly enlarged infraclacal tubercles, absence of raised, fleshy dorsolateral folds (vs. presence; Diesmos et al. 2015: Fig. 39H), and presence of transverse tibial bars (vs. absence; Diesmos et al. 2015: Fig. 39F,H). The range of sexual size dimorphism exhibited by the new species distinguishes it from both taxa as well (Table 3). From *S. aurantipunctata*, the new species is distinguished by having a pointed snout (vs. rounded; Diesmos et al. 2015: Fig. 39G), a relatively narrower head and shorter tibia (Table 3), glandular ventral texture limited in distribution to the groin (vs. spanning entire ventrum), yellow, green, tan, or light gray dorsal ground coloration (vs. bright green-yellow with black flecks [males] or bright orange spots [females and some males]; Fuiten et al. 2011: Fig. 2) and purple flank coloration (vs. abruptly stratified flank coloration), by the presence of dark tibial bars (vs. absent) and dark lateral head coloration (vs. bright green), the absence of enlarged infraclacal tubercles (vs. presence), and the absence of thickened postaxial dermal flanges on posterior surfaces of the hind limbs (vs. presence). Finally, from *S. sanguinea* the new species differs by its larger, nonoverlapping body size (Table 3), relatively shorter forearm and nuptial pad (Table 3), having glandular (vs. smooth) ventral texture around the groin, and by exhibiting

less-pronounced sexual size dimorphism (female/male SVL = 1.2–1.4 [*S. acai*] vs. 1.9–2.1 [*S. sanguinea*]).

**Description of holotype.**—Adult male in excellent state of preservation (Fig. 4A,B). Snout pointed, but terminally rounded in dorsal profile and extending well beyond lower jaw in lateral view; snout/head length = 0.45; head width narrower than body width, slightly wider than long; head width/head length = 0.76; head length/SVL = 0.41; canthus rostralis sharply angular, straight in dorsal aspect; loreal region slightly concave; nares slightly protuberant laterally, anterodorsal in position, visible from ventral aspect; interorbital/internarial distance = 0.87; interorbital distance/eye diameter = 1.2; labial region thin, barely visible in dorsal aspect; interorbital region flat, wider than eye diameter; rostrum flat; eyes moderate in size, oriented anterolaterally beyond jaw when viewed in ventral aspect, protuberant on top of head; tympanum distinct, located immediately behind eye; tympanum smaller than eye; tympanic annulus/eye diameter = 0.86; supratympanic ridge slightly evident, continuous with barely evident dorsolateral ridges; postrictal tubercles irregular, continuous, elongate, arching ventrally, composed of enlarged fleshy tubercles.

Dentigerous processes oriented transversely. Vomerine teeth in row of four atop dentigerous process of each vomer; dentigerous processes just posteromedial to choanae, separate for a distance equal to width of one choana; choanae moderate in size, suboval, widely separated, nearly obscured by maxilla when viewed from ventral aspect; premaxillary and maxillary teeth present; vocal slits absent; tongue elongate (length twice that of width), free for two thirds its length, posterior margin deeply notched.

Skin of dorsum smooth (Fig. 4A), asperities absent; posterior two thirds of venter glandular; skin of cloacal region coarsely glandular, especially adjacent to groin; cloacal region lacking prominently enlarged infraclacal tubercles; cloacal opening round, with transverse supraclacal cutaneous flap.

Upper arm slender; humeral glands absent; forearms robust (Fig. 4A,B); forearm/hand length = 0.70; forearm length/SVL = 0.24; fingers in increasing order of length  $II < III < V < IV$  (II much shorter than III);  $Fin2L/Fin4L = 0.47$ ; interdigital webbing absent; lateral fringes present on all digits of hand, most prominent on distal portions of Fingers III–V; terminal phalanges widely dilated distally, 3–5× width of penultimate phalanges; disks with circum-marginal grooves; ventral pads on Fingers III–V pointed, protruding beyond distal edge of dorsal surface, visible from dorsal aspect; penultimate phalanges with rounded supra-articular cutaneous flap.

Subarticular tubercles of hand large, raised, rounded, protuberant (Fig. 5A); digit (Roman numerals) and tubercle number (Arabic numbers): II (1), III (1), IV (2), V (2); supernumerary tubercles present basally on each finger, moderate in size, slightly raised, elongated on Fingers IV and V, with medial constriction; thenar (inner palmar metacarpal) tubercle elongate, 0.4× length of Finger II, separate from medial and outer palmar tubercles; thenar tubercle 1.3× length of large, subcircular, flat medial palmar tubercle and 2.1× length of narrow, elongate outer metacarpal tubercle (Fig. 4A); entire medial edge of thenar tubercle covered by translucent, velvety nuptial pad; nuptial pad continuing distally to just beyond articulation of penultimate

and ultimate phalanges; nuptial pad wrapping around preaxial side of Finger II entirely and nearly in contact with subarticular tubercle on its anterior edge; nuptial pad length/Finger I length = 0.98.

Hind limbs slender; tibia length/SVL = 0.66; forearm length/SVL = 0.58; forearm/tibia length = 0.87; tarsus/forearm length = 0.65; tarsus/foot length = 0.64; foot/tibia length = 0.88; heels overlap when thigh segment of hind limbs held at right angles to body; tibiotarsal articulation of adpressed limb reaching beyond rostrum; toes long, in increasing order of length  $I < II < III \leq V < IV$  ( $III \cong V$ );  $Toe4L/FL = 0.79$ ; toe disks smaller than those of fingers;  $Toe IV/Finger III$  disc width = 0.56; interdigital webbing of foot nearly complete (Fig. 4B), homogeneous, acrenulate; modal webbing formula of toes (Savage and Heyer 1969, 1997):  $I0-0II0-\frac{1}{2}III0-1^{+}IV1^{+}-0V$ ; webbing diminishing distally to form wide fringes along lateral edges of distal phalanges on portions free of web; tarsal fold distinct, continuous with postaxial dermal flange on edge of Toe V; subarticular tubercles of foot large, round or occasionally subelliptical, nearly pointed; digit (Roman numerals) and tubercle number (Arabic numbers): I (1), II (1), III (2), IV (3), V (2); inner metatarsal tubercle oval, 3× longer than minute, round, outer metatarsal tubercle; supernumerary tubercles absent from pes.

**Measurements of holotype (mm).**—SVL 52.1; head length 21.3; head width 16.1; snout length 9.6; interorbital distance 5.9; internarial distance 6.8; eye diameter 5.4; tympanic annulus diameter 5; head width 16.1; forearm length 12.4; femur length 30.2; tibia length 34.6; tarsus length 19.6; foot length 30.5; hand length 17.6; Toe IV length 24.2; Finger I length 6.1; Finger III length 12.8; Toe IV disc width 1.9; Finger III disc width 3.4; nuptial pad length 6.6.

**Coloration of holotype in life.**—(Based on field notes and photographs of RMB; see similarly patterned paratype; Fig. 6A) Ground color of dorsal surfaces homogenous light green; limbs slightly yellowish-green with evenly distributed tiny, dark, grayish-purple spots and flecks; trunk with pale yellow pigment on faint dorsolateral folds (= faintly raised dermal ridges; Fig. 5A); dark transverse bars on hind limbs (numbering four on femur, four on tibial segment of limb); dorsal head color similar to body; pigment along canthus rostralis, lateral head surface, pre- and postocular regions, and tympanum solid dark brown; labial region bright pale yellow, lightening to nearly white below eye, starkly contrasting with dark brown lateral surfaces of head; postrictal tubercles yellow.

Dorsolateral surfaces of body light green above, with sharp transition lateral stratification or transition to pale yellow ventrolaterally; position of dark-above, light-below flank stratification marked by fine dark greenish-brown line (Fig. 6A); lateral inguinal region heavily blotched with dark gray markings on pale yellow background; tibio-tarsal articulation bright white with fine gray markings; dorsal surfaces of hand and foot fade from lighter cream to white on Finger I to yellowish-green on Finger II, then to dark gray on Fingers III and IV; nuptial pad velvety gray; dorsal humerus yellow between dark green transverse bands, lightening to white by articulation with tibia; dorsal tibial segment nearly white between dark green transverse bands; dorsal surface of foot dark green, interdigital webbing dark gray with faint darker patches of pigment.

Ventral surfaces lighter than dorsal surfaces; throat homogeneous pale yellow; sternal region white with boldly contrasting dark brown humeral patches; venter yellow anteriorly, fading to cream with white glandular surfaces posteriorly.

Ventral surfaces of forearms white with starkly contrasting dark brown ventrolateral coloration, darker distally at wrist; palmar surface of hand dark brown, with grayish-purple palmar and carpal tubercles and nuptial pad; ventral surfaces of fingers homogenous dark brown, with bright white subarticular and supernumerary tubercles; ventral surfaces of outer terminal finger discs light gray, ventral surfaces of Fingers I and II discs pale yellow; ventral surfaces of femur, tibia, and shank yellow with boldly contrasting dark brown patches on posterior surfaces; tarsus purple; plantar surface of foot purple with grayish-purple subarticular tubercles; plantar surfaces of foot dark brown, with bright yellow to cream subarticular tubercles, ventral toe discs white proximally, dark gray distally; interdigital webbing of foot dark brown, boldly patterned with distinct white patches (Fig. 4B).

**Coloration of holotype in preservative.**—In preservative, the holotype's color pattern has been retained, but ventral colors have shifted to white or pale cream (yellow lost), dark brown coloration somewhat lightened. Other than loss of bright yellows and green (e.g., dorsal green coloration, accent colors of the postrictal tubercles, and dorsolateral ridges), difference between live and preserved coloration is minimal (Fig. 4A,B).

**Color variation.**—Dorsal ground surfaces of body varying shades of brown, from light brown (Negros Island male KU 323885, 323887; female KU 323858; Panay Island male KU 306863) to dark brown (Negros Island males KU 323868, 323873, 323883, 326382; Panay Island female KU 306864), immaculate or homogenous (most specimens) or with distinct darker spots (Negros Island females KU 306649, 323882) or indistinct darker blotches (Panay Island male KU 306863; Negros Island males KU 306437, 323675, 323866, 323869, 323880, 323885, 323887). Masbate Island specimens (CAS 144267, 144269) are patterned more boldly and exhibit stronger contrast between light and dark pigmentation than do Negros and Panay specimens.

Most specimens have some transverse dark bars on tibial and radio-ulnar segments of fore and hind limbs, respectively. Five specimens lack dark bars on limbs altogether (Negros Island males KU 306438, 323864, 323866, 323874; Panay Island male KU 306863); specimens with dark dorsal coloration have darkest transverse limb bars (Negros Island males KU 323868, 323870, 323873, 323880, 323883, 326382; Panay Island male KU 306865). Most remaining specimens have faint transverse limb bars on all limbs, but some specimens exhibit faint tibial bars and lack forearm bars (Negros Island females KU 323858, 323859, 323881, 326383; Negros Island males KU 323861, 323877, 323878–79; Panay Island female KU 306864).

Ventral body surfaces range from light, immaculate cream with dark pigment absent throughout (Negros Island males KU 306437, 306438, 323859, 323864, 323869, 323875, 323884–85, 323887) to cream with distinct dark spots scattered across all ventral surfaces and concentrated on throat and pectoral region (Negros Island males KU 323873, 323877, 323883, female KU 323881). The remaining

specimens have scattered light brown and indistinct speckling throughout ventral surfaces (Fig. 4B), some with darker congregation of dark pigment on throat (Panay Island males KU 306863, 306865–66; female KU 306864).

Lateral surfaces of heads grayish-blue, lacking canthal stripes (most individuals) or with very faint canthal stripe (KU 325898, 325905, 325912, 325916–17). Adult males lacking transverse limb bars (most) or with thin, faint, light gray bars (five or six) across forelimbs (KU 325913, 325916–17, 325923, 325926, 325944, PNM 9735); hind limbs lacking transverse bars (most) or with five or six thin, light gray bars (KU 325913, 325926). Flank coloration more clearly partitioned in females than in males, with sharper demarcation between dorsal grayish-blue and ventral grayish-pink.

Palmar surfaces of hand range from dark gray with yellowish subarticular tubercles (Panay Island female KU 306864 and males KU 306863, 306865–66; Negros males KU 306437, 323866, 323868, 323873, 323878, 323880, 323883, 326382), to dark brown with bold white tubercles (Figs. 3A, 4A; males KU 323861, 323875, 323879, 323887), to very light gray to yellowish-cream with little contrast between surface of hand and subarticular tubercles (Fig. 4A, B; Negros Island females KU 323857–59). Remaining (majority) specimens have light gray palmar surface of the hand with distinguishable, brighter, yellowish-cream subarticular tubercles. Plantar surface of the foot ranges from relatively homogeneous dark gray-brown with yellowish-cream subarticular tubercles (Panay Island female: KU 306864 and males KU 306863, 306865–66) or dark gray tubercles (Negros Island females: KU 323858, 323867, 323881–82 and males KU 306437, 323866, 323868, 323870, 323873, 323877–79) to homogeneous light gray with slightly lighter subarticular tubercles (Negros Island females KU 306649, 323856–57, 323859, 326383; males KU 306438, 323861, 323864, 323869, 323874–75, 323885, 323887).

Infracloacal rugosity slightly variable in size and shape with the following exceptions: some possess minute tuberculation (KU 325896, 325903, 325912, 325919) whereas others have enlarged and irregularly shaped glandular patches (KU 325923, 325928, PNM 9733, 9736).

**Distribution.**—The new species is known from Negros, Masbate, and Panay islands in the central Philippines (Fig. 1A). Other small islands of the West Visayan PAIC may also harbor populations of *Sanguirana acai*, if appropriate habitat can be located (e.g., Bantayan, Guimaras, Poro, San Francisco), but we are reasonably certain that the new species does not occur on Siquijor (several surveys in the last 10 yr have failed to detect its presence) and that it does not occur—or no longer occurs—on the heavily deforested and well-studied island of Cebu (Brown and Alcalá 1970, 1986). A population referred to *S. "everetti"* has been reported on Bohol (Brown and Alcalá 1970), but as of yet no genetic tissue samples have been obtained and so its position in phylogeny (Brown et al. 2016) cannot be ascertained. We would expect, based on PAIC-structured Philippine biogeography (Brown and Diesmos 2002, 2009), that the Bohol population should be conspecific with the species documented on Leyte, Samar, and eastern Mindanao islands (*S. mearnsi*), but this expectation remains untested. *Sanguirana acai* has been documented from 375 m above sea level to 1350 m on the large mountains of southern Negros, northern Negros, northwest Panay, and the western coastal mountains

of Panay (Taylor 1922; Inger 1954; Alcalá 1962; Brown and Alcalá 1970; Ferner et al. 2000; Gaulke 2011).

**Natural history.**—Frogs of the genus *Sanguirana* are stream breeders with indirect aquatic larval development and reasonably well characterized larval biology (Taylor 1920, 1922; Inger 1954; Alcalá 1962; Brown and Alcalá 1982a,b; Brown et al. 2000a; Gaulke 2011). Individuals of *Sanguirana acai* were found at night along forested mountain streams or in disturbed, regenerating, or second-growth forest, provided that it was adjacent to primary forest. The new species perches on rocky stream banks, on midstream boulders, and on rocks along lakeshores but is most frequently encountered perched on branches and leaves of streamside vegetation (Inger 1954; Ferner et al. 2000; Gaulke et al. 2008; Gaulke 2011). Brown and Alcalá (1955, 1961) described a variety of semiarboreal substrates for this species, including branches a few meters high in trees and away from water, but emphasized that ovulating females primarily were located near water (lake shores and pools of highly oxygenated streams). Eggs are not laid together in masses but are scattered and adhere to rocks, branches, pebbles, and other submerged debris (Alcalá 1962). Gravid females carry between 800–1000 eggs (Alcalá 1962; Brown and Alcalá 1982b). Alcalá (1962) provided a full technical description of *S. acai* tadpoles including notes on growth rates, morphological characteristics, diet, and behavior. Gaulke (2011) described the live coloration of *S. acai* tadpoles (bronze-green, with white scattered granules; larvae have a maximum body length of nearly 70 mm) and metamorphs (similar to that of adult). The new species appears to have a relatively broad season of reproductive activity; newly laid eggs and/or gravid females have been collected from February to December although amplexus has only been observed in April and May. Newly emerged metamorphs have been collected in May, June, July, and November (Alcalá 1962; Gaulke 2011).

Species of *Sanguirana* lack vocal sacs (Inger 1954), but vocalizations have been reported in breeding aggregations of *S. luzonensis* (Brown et al. 2000b) and recently documented in *S. mearnsi* (RMB, personal observations). To the best of our knowledge, vocalizations of *S. acai* have not been previously reported in the literature. Our recordings of the new species include at least two distinct call types (see below).

Sympatric species of anurans that have been recorded from at least parts of the new species range (Brown and Alcalá 1961, 1964; Gaulke 2011) include *Kaloula pulchra* (introduced; Diesmos et al. 2015), *K. picta* (widespread, endemic), *K. conjuncta negrosensis* (West Visayan PAIC endemic), *K. cf. kalingensis* (West Visayan PAIC endemic and potentially undescribed species; Blackburn et al. 2013), *Platymantis dorsalis* (widespread, endemic), *P. corrugatus* (widespread, endemic), *P. negrosensis* (West Visayan PAIC endemic), *P. hazelae* (West Visayan PAIC endemic), *P. paengi* (northwest Panay endemic), *P. spelaeus* (southern Negros endemic), *Limnonectes visayanus* (West Visayan PAIC and Romblon Island Group endemic), *L. leytensis* (widespread endemic), *Philautus surdus* (widespread endemic), *Kurixalus appendiculatus*, *R. pardalis* (widespread nonendemic natives; Brown and Alcalá 1982a, 1994), and the three introduced species *Hoplobatrachus rugulosus*, *Rhinella marina*, and *Hylarana erythraea* (Diesmos et al. 2006, 2015).

**Vocalizations.**—The advertisement call of *Sanguirana acai* has been recorded on two occasions. The first segment (9 April 2001; ML 224181) was recorded at “Camp Lookout,” 500 m elevation (ambient temperature 22.9°C; cloacal temperature 24°C), Barangay Bongbong, Municipality of Valencia (the type locality). The second segment (2 December 2001; ML 224348) was recorded at Lake Balinsasayo, 865 m elevation (ambient temperature 20.1°C), Barangay Janya-janya, Municipality of Sibulan. Both sites are on the slopes of Mt. Talinis in the Cuernos de Negros Mountain Range. In the first instance, an adult male (TNHC 62794; not vocalizing when first observed), captured at 2000 h and held in an inflated plastic bag inside a tent, began calling at 0300 h the next morning, apparently stimulated by the sound of light rain striking the tent (= Type 1, a dull, amplitude modulated “rattle” call). Over a 6-min period, TNHC 62794 called eight times and eventually ceased as the shower abated. Twelve subsequent calls were elicited artificially by RMB by simulating the approximate frequency of the rain by wrinkling paper and shaking the walls of the tent. The second unvouchered recording was captured from a dugout canoe upon approaching the lakeshore of Lake Balinsasayo (2000 h). In this instance, two or three males were observed in close proximity to a few larger females and surrounded by an estimated >15 additional males perched in nearby shrub-layer vegetation; two distinct call types were captured. In this segment, presumed advertisement calls (rattles) from two alternating males are interspersed with numerous high frequency, brief, tonal, frequency-modulated vocalizations (Type 2, chirping “peeps” and “squeaks”) from other males perched in close proximity (RMB, personal observation).

The stereotyped presumed advertisement call vocalization of *S. acai* is a moderately rapid, dull, amplitude-modulated pulsed train, sounding to the human ear like a hollow wooden rattle, initially shaken quickly then more slowly, with a gradual decline in pulse repetition rate (Fig. 8). Over the course of the ~0.5–2.5-s call, call amplitude climbs with successive pulses to maximum (Fig. 8C) as they simultaneously decline in pulse repetition rate (i.e., increase to maximum interpulse interval). Calling rate ([total number of calls – 1] / time from beginning of first call to beginning of last) in the unvouchered specimen at Lake Balinsasayo was 0.133 calls/s (in the presence of calling conspecifics), and TNHC 62794 called at 0.028 calls/s in response to rain and then at 0.038 calls/s in response to an artificial stimulus. Mean calling duration ranged from  $0.89 \pm 0.31$  SD (0.57–1.79;  $n = 8$ ) in the vouchered specimen to  $1.03 \pm 0.48$  SD (0.33–2.29;  $n = 20$ ) s in TNHC 62794. Individual calls contained 8–16 ( $\bar{X} = 8.2 \pm 3.7$  SD) distinct pulses (Fig. 8D) in the unvouchered specimen and 4–25 ( $\bar{X} = 10.5 \pm 5.4$  SD) pulses in TNHC 62794. Pulse repetition rate ([total number of pulses – 1] / time from beginning of first pulse to beginning of last) ranged from 0.06 to 0.09 ( $\bar{X} = 0.07 \pm 0.02$  SD) pulses/s in the unvouchered specimen and 0.061 to 0.122 ( $\bar{X} = 0.096 \pm 0.017$  SD) pulses/s in TNHC 62794. Within-call declines in pulse repetition rate are reflected in increasing interpulse intervals, which were brief at the start of each call (0.04–0.10,  $\bar{X} = 0.07 \pm 0.02$  SD in the unvouchered recording; 0.03–0.12,  $\bar{X} = 0.08 \pm 0.02$  SD in TNHC 62794), increased by a within-call average of 140% at midcall (0.07–0.12,  $\bar{X} = 0.10 \pm 0.02$  SD in the unvouchered

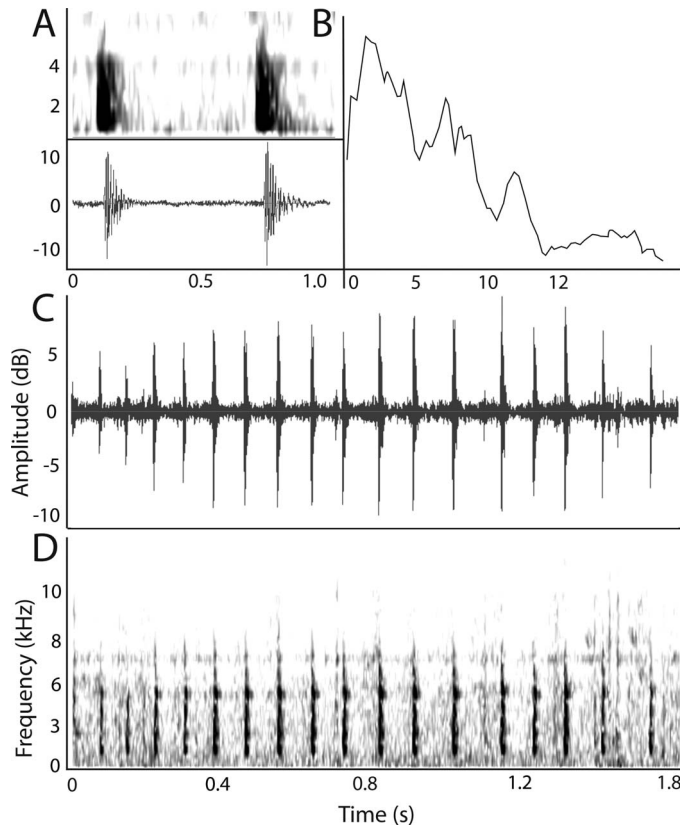


FIG. 8.—Male advertisement call (Type 1, rattle call) of *Sanguirana acai* (male paratype TNHC 62794; ML 224181) recorded from the type locality, Barangay Bongbong, the Municipality of Valencia, southern Negros Island (9 April 2001; body temperature 24°C). An expanded sonogram (A: frequency in kHz vs. time in ms) and waveform (relative amplitude vs. time in ms) of two notes from midcall, and relative power spectrum (B: from a Fast Fourier Transformation, relative amplitude vs. frequency in kHz) and a full call as depicted in a 1.8-s oscillogram (C: relative amplitude vs. time in s) and corresponding audiospectrogram (D: frequency in kHz vs. time in s) of a typical 18-note call.

recording; 0.07–0.14,  $\bar{X} = 0.12 \pm 0.02$  SD in TNHC 62794), and increased further to an average of 290% of the initial intersperse interval at the call's terminus (0.09–0.19,  $\bar{X} = 0.16 \pm 0.03$  SD in the unvouchered recording; 0.13–0.21,  $\bar{X} = 0.27 \pm 0.03$  SD in TNHC 62794; Fig. 8C). Spectral properties of the advertisement call are structured and apparently invariant across multiple calls from a single individual (Fig. 8A,B), but frequency differences are apparent between the two recorded individuals. Throughout the call, energy is apparent at multiple, distinct frequency components (Fig. 8B) with the fundamental frequency (lowest) either the dominant (possessing the highest energy of any of the call's frequency components; Fig. 8B) or apparently subequal to the fourth frequency band in some calls. The call of TNHC 62794 had between three (Fig. 8A,B) to seven detectable frequency components in some calls with highest energy in the fundamental, dominant frequency (relative power, in decibels [dB], included in parentheses) of 0.9 kHz (78–79), 1.8 (73–74), 2.3 (72–73), 2.9 (76–78), 3.6 (64–65), 4.2 (59–62), and 5.0 (54–56) kHz. The unvouchered Lake Balinsasayo male's call had three to six distinct frequency components, peaking at 0.9, 1.7, 2.6, 3.4, 4.1, and 5.9 kHz, respectively. Toward the end (the last 3–5 pulses) of 4/20 calls recorded for TNHC 62794, the majority

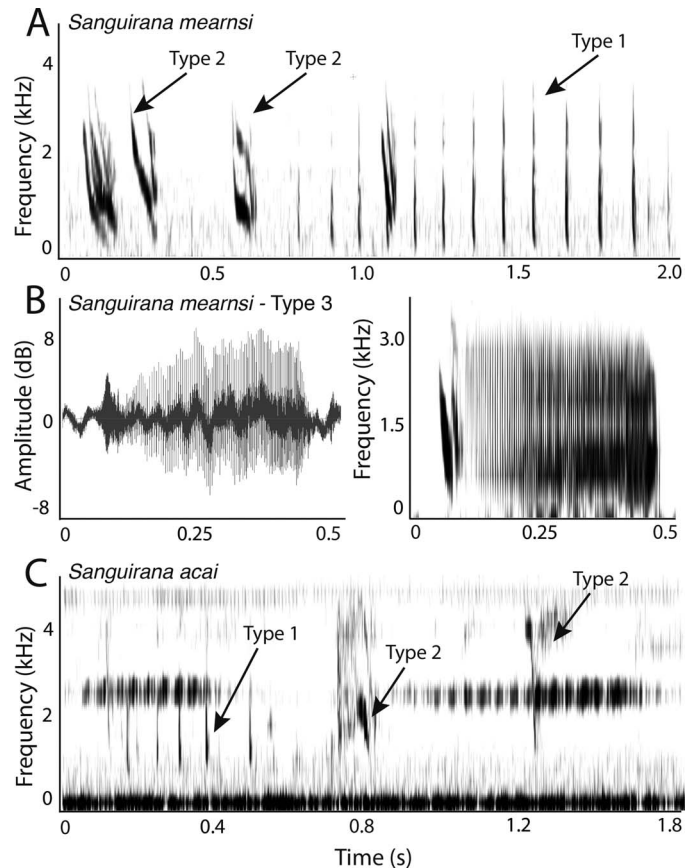


FIG. 9.—Audiospectrograms of the complex acoustic repertoires of *Sanguirana mearnsi* (A, B; from Municipality of Burauen, northern Leyte Island; RMB Field No. 21807; deposited at KU) and *Sanguirana acai* (C; from Lake Balinsasayo, Cuernos de Negros Mountain Range, southern Negros Island; voucher not collected, ML 224348). In both species, the structured, presumably advertisement rattle vocalizations (Type 1 calls) differ from chirping frequency arcs and sweeps (Type 2 calls) of unknown function. A third vocalization, quacks (B), has been recorded only in *S. mearnsi*; in the lower panel, calls of orthopterans overlap vocalization of *S. acai* at 2.2 and 4.7 kHz.

of the call's energy shifted up into the fourth frequency component, with energy levels that rose above the fundamental (80–82 dB).

The second call type (chirping peeps and squeaks) initially was thought to represent female response calls until it was discovered that they originated from the large group of nearby males. In this single instance, RMB observed alternating calling males on rocks, each facing nearby females (~10–15 cm). In the background, interspersed between and overlapping rattle calls, we recorded a rapid sequence of chirps. Type 2 chirping calls overlapped temporally (multiple males vocalizing at the same time, temporally overlapping one another and Type 1 calls), unlike the nature of the assumed Type 1 male advertisement call in which males calling in close proximity alternate and do not overlap temporally. These tonal chirping vocalizations (Fig. 9) took the form of brief (0.05–0.07) frequency arcs, rising from 0.6–0.7 to 1.5–1.7 kHz ( $n = 14$ ), with subsequent declines back to 0.6–0.7 kHz, constant frequency tones (2.6–3.2 kHz;  $n = 9$ ) with durations of 0.09–1.1 s, followed by a steep frequency sweep (terminating at 0.9–1.0 kHz) or simple frequency sweeps from 2.9–3.1 to 1.0–1.1 kHz over an interval of 0.04–0.06 s ( $n = 19$ ). The concordance



between observed Type 2 vocalizations in *S. acai* and similar calls reported for *S. luzonensis* (Brown et al. 2000b) suggests that calls reported previously for *S. luzonensis* were Type 2 vocalizations (also observed in large aggregations of males); to date, Type 1 calls have not been observed or reported in *S. luzonensis*. In contrast, both Type 1 (rattles) and Type 2 (chirps) have been reported in *S. mearnsi* (Sanguila et al. 2016), although in that study it was also assumed these represented male advertisement calls and female response vocalizations. Our recent field work on Samar and Leyte confirms our revised interpretation, namely that males of *Sanguirana acai* and *S. mearnsi* both produce multiple classes of vocalizations which we term Type 1 and Type 2. Additionally, to date, only documented (vouchered) Type 2 calls (chirps) have been confirmed in males of *S. luzonensis*. The advertisement calls of all other *Sanguirana* species remain unknown.

Finally, the true social context and ultimate function of *Sanguirana* call variation remains poorly understood. Type 1 rattle calls have been recorded in *S. acai* and *S. mearnsi* in solitary males (suggesting advertisement, mate attraction) but also in instances of one or a few males, vocalizing in close vicinity to females (suggesting courtship) and at times when nearby, large aggregations of males were producing only Type 2 calls (suggesting chorusing behavior, possibly longer-distance mate attraction, or even agonistic interactions). The interpretation of multiple call types with distinct functions has been reported in other anuran communication studies (Narins and Capranica 1978; Rand and Ryan 1981) and is supported by one recent observation of apparent female phonotactic approach, over a 5-m stretch of stream, in the direction of a solitary, Type 2-calling male *S. luzonensis* (J. Binaday and RMB, personal observations, January 2017, Sorsogon Province, Luzon).

**Etymology.**—We are pleased to name this new species for our mentor, collaborator, and friend, Dr. Angel C. Alcalá of the Silliman University (Dumaguete City, Negros Island), in recognition of his numerous contributions to Philippine herpetology. Angel Alcalá (known by friends and colleagues by a nickname, derived from his initials ACA, pronounced “Ah-Kah”) is one of the Philippines’ premier biodiversity and conservation scientists whose lifelong dedication to conservation of the country’s forests and coral reefs stands as an inspiration to generations of Filipinos. Alcalá’s earlier fieldwork (conducted in collaboration with the late Walter C. Brown; Alcalá 2004) resulted in the world’s most significant collection (>30,000 specimens) of Philippine herpetological diversity (deposited at CAS), which forms the foundation of what is known globally of the taxonomy (Diesmos et al. 2015), distribution (Brown and Alcalá 1970, 1986), reproduction and ecology (Brown and Alcalá 1961, 1964, 1982a,b, 1986), and conservation status (Alcalá et al. 2012; Diesmos et al. 2014; IUCN 2015) of the country’s endemic amphibians and reptiles (Diesmos et al. 2015). The specific epithet is a patronym and a masculine noun in the genitive case. Suggested common name, Alcalá’s West Visayan Stream Frog.

#### DISCUSSION

The recognition of the *Sanguirana mearnsi* as the valid name for the Northeast Mindanao Stream Frogs (Inger

1954; Brown and Alcalá 1970; Sanguila et al. 2016), and the recognition of the West Visayan PAIC populations as a new species (Brown et al. 2000a; Fuiten et al. 2011; Gaulke 2011), represent taxonomic solutions that are long overdue (Brown 2007; Diesmos and Brown 2011; Diesmos et al. 2014, 2015). It is not surprising that neither the northeast Mindanao PAIC lineage (*S. mearnsi*) nor the West Visayan lineage (*S. acai*) should be found to be distinct from the nominal *S. everetti* of southwest Mindanao Island (Fig. 1; Brown et al. 2016). With respect to the former, the sister species pair *S. mearnsi* and *S. everetti* are parapatric, separated by deep genetic divergence, are phenotypically distinct, and show no evidence of reticulation or gene flow (Inger 1954; Brown et al. 2000a, 2016). With respect to the latter, *S. acai* and *S. everetti* are distantly allopatric on separate PAICs, are phenotypically distinct (Fig. 3), and are distantly related (Brown et al. 2016). In contrast, as might be expected, *S. acai* actually is phenotypically most similar (Fig. 3) to its closest relative, *S. luzonensis*. Previous studies have suggested that the problematic and disjunct distribution of *S. everetti* warranted scrutiny (Inger 1954; Ferner et al. 2000; Fuiten et al. 2011; Gaulke 2011), and we find it surprising that this unresolved biogeographic anomaly (Brown and Alcalá 1970; Brown and Diesmos 2009; Brown et al. 2013a) has not been addressed until now.

The eight recognized species of the genus *Sanguirana* form a well supported clade (Bossuyt et al. 2006; Stuart 2008; Wiens et al. 2009; Holder et al. 2010; Brown et al. 2016), with most taxa distinguished from congeners by diagnostic morphological character differences, morphometric and body size variation, degree of sexual size dimorphism, allopatry on isolated (separated by deep marine channels) island groups, and considerable genetic divergence (Table 2; Brown et al. 2000a, 2016; Fuiten et al. 2011). As currently understood, no other congeners occur in the West Visayan PAIC and, therefore, none occur in sympatry with the biogeographically isolated *S. acai*.

With the resolution of this taxonomic problem, all available evidence (morphological diagnosability, genetic distinctiveness, position in phylogeny, biogeography) points to a logical PAIC-structured understanding of species diversity in the genus *Sanguirana* of the central and southern Philippines (Brown et al. 2000a,b, 2013a, 2016; Brown and Diesmos 2002, 2009)—with a few lingering, minor exceptions. One remaining, unanswered question is the taxonomic identification of the central Bohol population of “*S. everetti*.” Given that Leyte, Samar, and northeastern Mindanao populations of *Sanguirana* have all been identified convincingly as *S. mearnsi* (Brown et al. 2000a, 2016), Bohol amphibians are most-often allied with the Mindanao PAIC (e.g., Brown and Alcalá 1970; Brown and Siler 2013; Gonzales et al. 2014), and that true *S. everetti* populations (Taylor 1920; type locality = “Zamboanga” [western Mindanao]) are now known only from southwestern Mindanao (Inger 1954; Brown et al. 2000a, 2016), the allopatric Bohol population of *S. everetti* should be re-examined. We would not be surprised if this population was identified as *S. mearnsi*, but it remains possible that it may represent an additional, undescribed species.

Three unresolved questions still complicate our understanding of evolutionary relationships and *Sanguirana* species diversity in the northern Philippines (Luzon PAIC).

First, *S. luzonensis*, as currently recognized, is widespread across multiple islands within the Luzon PAIC, spanning numerous marine channels (Fig. 1) and known fault zones (Hall 2002; Yumul et al. 2003, 2009b), all of which have been shown to be biogeographic barriers that define species distributions in unrelated, codistributed groups (Brown and Diesmos 2009; Welton et al. 2010; Brown and Siler 2013; Brown et al. 2013a; Gonzales et al. 2014). To date, systematists have not critically evaluated patterns of intra-specific variation in *S. luzonensis* nor considered whether all of the populations referred to *S. luzonensis* in this region are in fact a single evolutionary lineage (species). One recent study (Brown et al. 2016) has taken a first step toward this goal, finding extensive geographically structured genetic variation in this species. However, because so much of Luzon remains unsurveyed and no formal species delimitation analyses were conducted, the population-level diversity within *S. luzonensis* remains poorly understood (Fig. 1; Brown et al. 2016).

Second, whether *S. tipanan* (Sierra Madre of Luzon; Brown et al. 2000a,b) is a distinct species relative to *S. igorota* (Central Cordillera of Luzon; Brown et al. 2016) remains an open question. The phenotypic distinctiveness of these two taxa is clear at the most-northern extent of their ranges where they are separated by the wide, arid, environmental barrier represented by the Cagayan Valley (Taylor 1922; Brown et al. 2000a). However, much like Brown and Siler's (2013) recent findings from the *Pulchrana signata* Complex (see Brown and Guttman 2002; Fig. 3), variable and intermediate phenotypes have been documented in the southern extent of their ranges where the distributions of these two species abut in the Caraballo Mountains of central Luzon (Fuiten et al. 2011; Brown et al. 2012a, 2013b). A recent phylogenetic analysis suggested that *S. igorota* may be paraphyletic with respect to *S. tipanan*, an arrangement that would require the placement of the latter species in synonymy with the former, if verified with additional geographic and gene sampling (Brown et al. 2016).

Finally, with small islands and isolated geological components of large islands increasingly appreciated for their tendency to support endemic species (Welton et al. 2010; Sanguila et al. 2011, 2016; Brown et al. 2013a, 2015a), it would not be surprising if additional species of *Sanguirana* were discovered in the near future. Islands like Bantayan, Basilan, Biliran, Bohol, Burias, Pacijan, Ponson, Poro, Ticao, and the remaining islands of the Sulu Archipelago all deserve amphibian biodiversity survey efforts if trained naturalists can be provided access to the last remaining habitats on these isolated landmasses. Likewise, the recent unexpected discovery of a highly distinct evolutionary lineage of *Sanguirana* in isolated mountains of central Luzon (*S. aurantipunctata*; Fuiten et al. 2011) emphasizes the degree to which this endemic and understudied Philippine genus is prone to differentiation in montane habitats; all high-elevation peaks of Luzon and Mindanao deserve particular attention by field biologists (Brown 2015).

Conservation efforts aimed at central Philippine amphibians are plagued by near-complete removal of forests in the West Visayan islands of Cebu (Brown and Alcala 1986; Supsup et al. 2016), Guimaras, Negros (Brown and Alcala 1961, 1964; Alcala et al. 2004), Masbate, and Panay (Ferner

et al. 2000; Gaulke 2011), with wholesale conversion of marginal habitats to agriculture (Brown and Alcala 1986) and the archipelago-wide infection of amphibian populations by chytrid fungus (Swei et al. 2011; Brown et al. 2012b; Diesmos et al. 2012). We find that the new species, with its forested habitat severely fragmented and its patchy, but well documented, distribution tied to clean water sources running within, or at the margins of, intact vegetation cover (Ferner et al. 2000; Gaulke 2011), qualifies for classification at a formal, elevated level of conservation threat under IUCN criteria: "Vulnerable" (VU, IUCN 2010: A2ac; B2ab[iii]; D2). Thus, the new species should be considered an immediate conservation concern (Diesmos et al. 2014).

Given the absence of new data on the status or distribution of *Sanguirana everetti* on central and southern Mindanao Island (Diesmos and Brown 2011; Diesmos et al. 2014, 2015), the conservation status of true *S. everetti* remains "Data Deficient" (IUCN 2015). Studies of the remaining populations of *S. everetti* (southwestern Mindanao Island) and *S. acai* (West Visayan PAIC) are pressing challenges for future field surveys and conservation research (Brown et al. 2012b). Both *S. tipanan* and *S. igorota* are classified by IUCN (2015) at elevated conservation threat levels, although new survey data suggest both species are more widely distributed than previously thought and appear tolerant to some level of disturbance (Brown et al. 2000a,b, 2012a, 2013b; Siler et al. 2011), suggesting that their status needs to be reconsidered and revised (Diesmos et al. 2014). The unexpected discovery of so many new amphibian species on larger islands (Fuiten et al. 2011; Siler et al. 2011; Brown 2015; Brown et al. 2015b) emphasizes the need for an accelerated pace of faunal inventories and field-based assessment of species boundaries, informed with basic natural history data. These and other unexpected discoveries of evolutionarily distinctive species of endemic Philippine amphibians (e.g., Sanguila et al. 2011; Blackburn et al. 2013; Brown 2015; Brown et al. 2015a) remind us that the only way to solve persistent taxonomic and conservation status questions of this kind is to encourage and support faunal survey activities—necessarily including the collection of properly preserved voucher specimens (Rocha et al. 2014), advertisement calls, and genetic samples—in both the unexplored and previously surveyed (yet still poorly understood) islands of the Philippines (Brown et al. 2013a, 2016).

**Acknowledgments.**—The Biodiversity Management Bureau (BMB) of the Philippine Department of Environment and Natural Resources (DENR) facilitated research (Memorandums of Agreement KU2005, KU2009, KU2015) and collection permits (GP 171, 185, 187, 201, 212, 221, 246, 258) necessary for this and related studies; and the University of Kansas' Animal Use Committee approved and administered RMB's IACUC authorization (185-04). For the loans of specimens and photographs, or assistance visiting collections we thank D. Blackburn (UF), D. Blackburn, J. Vindum, and A. Leviton (CAS), A. Diesmos, R. Sison (PNM), J. Ferner (CMNH), A. Resetar, R. Inger, and H. Voris (FMNH), K. de Queiroz, A. Wynn, and R. Crombie (USNM), J. Hanken and J. Rosado (MCZ), T. LaDuc and D. Cannatella (TNHC), and S. Rogers and J. Padiad (CM). Financial support for fieldwork was provided by a National Science Foundation (NSF) Doctoral Dissertation Improvement Grant (DEB 0073199) and a Biotic Surveys and Inventories grant (DEB 0743491) to RMB; and by Fulbright and Fulbright-Hayes funding and an NSF Doctoral Dissertation Improvement Grant (DEB 0804115) to CDS. Archival deposition and digitization of RMB's analog media collection was supported by a grant from NSF's Advancing Digitization of Biological Collections Thematic Collections Network program (DEB 1304585) to RMB. During the preparation of this manuscript AP was supported by funding from the

U.S. National Institute of Health, Research Initiative for Scientific Enhancement (RISE) program. We thank V. Yngente, J. Fernandez, and A. Diesmos for collaboration in fieldwork, anonymous reviewers for critical reviews of the manuscript, and our friend and mentor Angel C. Alcalá for many years of generous support and patient guidance over the course of our fruitful international collaboration.

## LITERATURE CITED

- Alcalá, A.C. 1962. Breeding behavior and early development of frogs of Negros, Philippines Islands. *Copeia* 1962:679–726.
- Alcalá, A.C. 2004. A life of service to science: A tribute to Walter Creighton Brown 1913–2002. *Silliman Journal* 45:258–262.
- Alcalá, E.L., A.C. Alcalá, and C.N. Dolino. 2004. Amphibians and reptiles in tropical rainforest fragments on Negros Island, the Philippines. *Environmental Conservation* 31:254–261.
- Alcalá, A.C., A. Bucol, A.C. Diesmos, and R.M. Brown. 2012. Vulnerability of Philippine amphibians to climate change. *Philippine Journal of Science* 141:77–87.
- Arifin, U., D.T. Iskandar, D.P. Bickford, R.M. Brown, R. Meier, and S.N. Kuttli. 2011. Phylogenetic relationship within the genus *Staurois* (Amphibia, Ranidae) based on 16S rRNA sequences. *Zootaxa* 2733:39–52. DOI: <http://dx.doi.org/10.11646/zootaxa.2733.4.1>
- Aurelio, M.A., R.E. Peña, and K.J.L. Taguibao. 2013. Sculpting the Philippine archipelago since the Cretaceous through rifting, oceanic spreading, subduction, obduction, collision and strike-slip faulting: Contribution to ICGA5000. *Journal of Asian Earth Sciences* 72:102–107.
- Blackburn, D.C., D.P. Bickford, A.C. Diesmos, D.T. Iskandar, and R.M. Brown. 2010. An ancient origin for the enigmatic flat-headed frogs (Bombinatoridae: *Barbourula*) from the islands of Southeast Asia. *PLoS ONE* 5:e12090. DOI: <http://dx.doi.org/10.1371/journal.pone.0012090>
- Blackburn, D.C., C.D. Siler, A.C. Diesmos, J.A. McGuire, D.C. Cannatella, and R.M. Brown. 2013. An adaptive radiation of frogs in a Southeast Asian island archipelago. *Evolution* 67:2631–2646.
- Boettger, O. 1893. Drei neue Wasserfrösche (*Rana*) von den Philippinen. *Zoologischer Anzeiger* 16:363–366.
- Bossuyt, F., R.M. Brown, D.M. Hillis, D.C. Cannatella, and M.C. Milinkovitch. 2006. Late Cretaceous diversification resulted in continent-scale regionalism in the cosmopolitan frog family Ranidae. *Systematic Biology* 55:579–594.
- Boulenger, G.A. 1882. Catalogue of the Batrachia Salientia s. Ecaudata in the Collection of the British Museum, 2nd ed. Taylor and Francis, UK.
- Boulenger, G.A. 1894. On the herpetological fauna of Palawan and Balabac. *Annals and Magazine of Natural History (Series 6)* 14:81–90.
- Boulenger, G.A. 1896. Descriptions of new batrachians in the British Museum. *Annals and Magazine of Natural History (Series 6)* 17:401–406.
- Brown, R.M. 2007. Introduction to Robert F. Inger's systematics and zoogeography of Philippine Amphibia. Pp. 1–17 in *Systematics and Zoogeography of Philippine Amphibia*. Natural History Publications, Malaysia.
- Brown, R.M. 2015. A new species of stream frog (genus *Hylarana*) from the mountains of southern Mindanao Island, Philippines. *Herpetologica* 71:223–233.
- Brown, R.M., and A.C. Diesmos. 2002. Application of lineage-based species concepts to oceanic island frog populations: The effects of differing taxonomic philosophies on the estimation of Philippine biodiversity. *Silliman Journal* 42:133–162.
- Brown, R.M., and A.C. Diesmos. 2009. Philippines, biology. Pp. 723–732 in *Encyclopedia of Islands* (R. Gillespie and D. Clague, eds.). University of California Press, USA.
- Brown, R.M., and J.C. Gonzalez. 2007. A new forest frog of the genus *Platymantis* (Amphibia: Anura: Ranidae) from the Bicol Peninsula of Luzon Island, Philippines. *Copeia* 2007:251–266.
- Brown, R.M., and S.I. Guttman. 2002. Phylogenetic systematics of the *Rana signata* complex of Philippine and Bornean stream frogs: Reconsideration of Huxley's modification of Wallace's Line at the Oriental–Australian faunal zone interface. *Biological Journal of the Linnean Society* 76:393–461.
- Brown, R.M., and C.D. Siler. 2013. Spotted stream frog diversification at the Australasian faunal zone interface, mainland versus island comparisons, and a test of the Philippine 'dual-umbilicus' hypothesis. *Journal of Biogeography* 41:182–195.
- Brown, R.M., and B.L. Stuart. 2012. Patterns of biodiversity discovery through time: An historical analysis of amphibian species discoveries in the Southeast Asian mainland and island archipelagos. Pp. 348–389 in *Biotic Evolution and Environmental Change in Southeast Asia* (D.J. Gower, K.G. Johnson, J.E. Richardson, B.R. Rosen, L. Rüber, and S.T. Williams, eds.). Cambridge University Press, UK.
- Brown, R.M., J.A. McGuire, and A.C. Diesmos. 2000a. Status of some Philippine frogs related to *Rana everetti* (Anura: Ranidae), description of a new species, and resurrection of *Rana igorota* Taylor 1922. *Herpetologica* 56:81–104.
- Brown, R.M., J.A. McGuire, J.W. Ferner, N. Icarangal, Jr., and R.S. Kennedy. 2000b. Amphibians and reptiles of Luzon Island, II: Preliminary report on the herpetofauna of Aurora Memorial National Park, Philippines. *Hamadryad* 25:175–195.
- Brown, R.M., A.C. Diesmos, and A.C. Alcalá. 2008. Philippine amphibian biodiversity is increasing in leaps and bounds. Pp. 82–83 in *Threatened Amphibians of the World* (S.N. Stuart, M. Hoffmann, J.S. Chanson, N.A. Cox, R. Berridge, P. Ramani, and B.E. Young, eds.). IUCN – The World Conservation Union, Switzerland; and Conservation International, USA. Lynx Ediciones, Spain.
- Brown, R.M., C.H. Oliveros, C.D. Siler, J.B. Fernandez, L.J. Welton, P.A.C. Buenavente, M.L.D. Diesmos, and A.C. Diesmos. 2012a. Amphibians and Reptiles of Luzon Island (Philippines), VII: Herpetofauna of Ilocos Norte Province, Northern Cordillera Mountain Range. *Check List* 8:469–490.
- Brown, R.M., A.C. Diesmos, M.B. Sanguila, C.D. Siler, M.L.D. Diesmos, and A.C. Alcalá. 2012b. Amphibian conservation in the Philippines. *FrogLog* 104:40–43.
- Brown, R.M., C.D. Siler, C.H. Oliveros, ..., A.C. Alcalá. 2013a. Evolutionary processes of diversification in a model island archipelago. *Annual Review of Ecology, Evolution, and Systematics* 44:411–435.
- Brown, R.M., C.D. Siler, C.H. Oliveros, ..., A.C. Diesmos. 2013b. The amphibians and reptiles of Luzon Island, Philippines, VIII: The herpetofauna of Cagayan and Isabela Provinces, northern Sierra Madre Mountain Range. *ZooKeys* 266:1–120.
- Brown, R.M., C.D. Siler, S. Richards, A.C. Diesmos, and D.C. Cannatella. 2015a. Multilocus phylogeny and a new classification for Southeast Asian and Melanesian forest frogs (family Ceratobatrachidae). *Zoological Journal of the Linnean Society* 174:130–168.
- Brown, R.M., L.A. de Layola, A. Lorenzo, II, M.L.L. Diesmos, and A.C. Diesmos. 2015b. A new species of limestone karst-inhabiting forest frog, genus *Platymantis* (Amphibia: Anura: Ceratobatrachidae: subgenus *Lupacolus*) from southern Luzon Island, Philippines. *Zootaxa* 4048:191–210. DOI: <http://dx.doi.org/10.11646/zootaxa.4048.2.3>
- Brown, R.M., Y.-C. Su., B. Barger, C.D. Siler, M.B. Sanguila, A.C. Diesmos, and D.C. Blackburn. 2016. Phylogeny of the island archipelago frog genus *Sanguirana*: Another endemic Philippine radiation that diversified 'Out-of-Palawan.' *Molecular Phylogeny and Evolution* 91:531–536.
- Brown, W.C., and A.C. Alcalá. 1955. Observations on amphibians of the Mount Halcon and Canlaon areas, Philippine Islands. *Silliman Journal* 2:93–102.
- Brown, W.C., and A.C. Alcalá. 1961. Populations of amphibians and reptiles in the submontane and montane forests of Cuernos de Negros, Philippine Islands. *Ecology* 42:628–636.
- Brown, W.C., and A.C. Alcalá. 1964. Relationship of the herpetofaunas of the non-dipterocarp communities to that of the dipterocarp forest on southern Negros Island, Philippines. *Senckenbergiana Biologie* 45:591–611.
- Brown, W.C., and A.C. Alcalá. 1970. The zoogeography of the herpetofauna of the Philippine Islands, a fringing archipelago. *Proceedings of the California Academy of Sciences* 38:105–130.
- Brown, W.C., and A.C. Alcalá. 1982a. Reproductive biology of some species of *Philautus* (Rhacophoridae) and other Philippine anurans. *Kalikasan, Philippine Journal of Biology* 11:203–226.
- Brown, W.C., and A.C. Alcalá. 1982b. Modes of reproduction of Philippine anurans. Pp. 416–428 in *Advances in Herpetology and Evolutionary Biology* (A.G.J. Rodin and K. Miyata, eds.). Museum of Comparative Biology, USA.
- Brown, W.C., and A.C. Alcalá. 1986. Comparison of the herpetofaunal species richness on Negros and Cebu Islands, Philippines. *Silliman Journal* 33:74–86.
- Brown, W.C., and A.C. Alcalá. 1994. Philippine frogs of the family Rhacophoridae. *Proceedings of the California Academy of Sciences* 48:185–220.
- Chan, K.O., D.C. Blackburn, R.W. Murphy, B.L. Stuart, D.A. Emmett, C.T. Ho, and R.M. Brown. 2013. A new species of narrow-mouthed frog of the genus *Kaloula* from eastern Indochina. *Herpetologica* 69:329–341.
- Chan, K.O., and R.M. Brown. 2017. Did true frogs "dispersify"? *Biology Letters* 13:20170299.

- Cochran, D.M. 1961. Type specimens of reptiles and amphibians in the U.S. National Museum. *Bulletin of the United States National Museum* 220:1–289.
- de Queiroz, K. 1998. The general lineage concept of species, species criteria, and the process of speciation. Pp. 57–75 in *Endless Forms: Species and Speciation* (D.J. Howard and S.H. Berlocher, eds.). Oxford University Press, USA.
- de Queiroz, K. 1999. The general lineage concept of species and the defining properties of the species category. Pp. 49–89 in *Species: New Interdisciplinary Essays* (R.A. Wilson, ed.). Massachusetts Institute of Technology Press, USA.
- de Queiroz, K. 2005. A unified concept of species and its consequences for the future of taxonomy. *Proceedings of the California Academy of Sciences* 56:196–215.
- de Queiroz, K. 2007. Species concepts and species delimitation. *Systematic Biology* 56:879–886.
- Diesmos, A.C., and R.M. Brown. 2011. Diversity, biogeography, and conservation of Philippine Amphibians. Pp. 26–49 in *Biology and Conservation of Tropical Asian Amphibians* (I. Das, A. Haas, and A.A. Tuen, eds.). Proceedings of the Conference “Biology of the Amphibians in the Sunda Region, South-east Asia.” Institute of Biodiversity and Environmental Conservation, Universiti Malaysia Sarawak, Malaysia.
- Diesmos, A.C., M.L. Diesmos, and R.M. Brown. 2006. Status and distribution of alien invasive frogs in the Philippines. *Journal of Environmental Science and Management, Philippines* 9:41–53.
- Diesmos, M.L.D., A.C. Diesmos, C.D. Siler, V.T. Vredenburg, and R.M. Brown. 2012. Detecting the distribution of chytrid fungus in the Philippines. *FrogLog* 104:48–49.
- Diesmos, A.C., A.C. Alcalá, C.D. Siler, and R.M. Brown. 2014. Status and conservation of Philippine amphibians. Pp. 310–336 in *Conservation Biology of Amphibians of Asia. Status of Conservation and Decline of Amphibians: Eastern Hemisphere* (H. Heatwole and I. Das, eds.). Natural History Publications, Malaysia.
- Diesmos, A.C., J.L. Watters, N.A. Huron, . . . , C.D. Siler. 2015. Amphibians of the Philippines, Part I: Checklist of the species. *Proceedings of the California Academy of Sciences* 62:451–531.
- Dubois, A. 1992. Notes sur la classification des Ranidae (Amphibiens anoures). *Bulletin Mensuel de la Société Linnéenne de Lyon* 61:305–352.
- Evans, B.J., R.M. Brown, J.A. McGuire, J. Supriatna, N. Andayani, A.C. Diesmos, D.T. Iskandar, D.J. Melnick, and D.C. Cannatella. 2003. Phylogenetics of fanged frogs: Testing biogeographical hypotheses at the interface of the Asian and Australian faunal zones. *Systematic Biology* 52:794–819.
- Ferner, J.W., R.M. Brown, R.V. Sison, and R.S. Kennedy. 2000. The amphibians and reptiles of Panay Island, Philippines. *Asiatic Herpetological Research* 9:1–37.
- Frost, D.R. 2016. *Amphibian Species of the World: An Online Reference*, Version 6.0. Available at <http://research.amnh.org/herpetology/amphibia/index.html>. Archived by WebCite at <http://www.webcitation.org/6pEYp6iN9>
- Frost, D.R., and D.M. Hillis. 1990. Species in concept and practice: Herpetological applications. *Herpetologica* 46:87–104.
- Fuiten, A., A.C. Diesmos, L.J. Welton, A. Barley, B. Oberheide, E.L.B. Rico, and R.M. Brown. 2011. New species of stream frog from the mountains of Luzon Island, Philippines. *Herpetologica* 67:89–103.
- Gaulke, M. 2011. *The Herpetofauna of Panay Island, Philippines*. Edition Chimaira, Germany.
- Gaulke, M., I. Frank, and B. Tacud. 2008. Zur Farbvariabilität und Brutbiologie einiger philippinischer Anuren. *Sauria* 30:11–21.
- Gonzales, P., Y.-C. Su, C.D. Siler, A. Barley, M.B. Sanguila, A.C. Diesmos, and R.M. Brown. 2014. Archipelago colonization by ecologically dissimilar amphibians: Evaluating the expectation of common evolutionary history of geographical diffusion in co-distributed rainforest tree frogs in islands of Southeast Asia. *Molecular Phylogenetics and Evolution* 72:35–41.
- Hall, R. 2002. Cenozoic geological and plate tectonic evolution of SE Asia and the SW Pacific: Computer-based reconstructions, model and animations. *Journal of Asian Earth Sciences* 20:353–431.
- Hayek, L.-A.C., W.R. Heyer, and C. Gascon. 2001. Frog morphometrics: A cautionary tale. *Alytes* 18:153–177.
- Holder, M.T., J.A. Sukumaran, and R.M. Brown. 2010. Bayesian approaches to phylogenetic analysis. Pp. 1–39 in *Bayesian Modeling in Bioinformatics* (D.K. Dey, S. Ghosh, and B.K. Mallick, eds.). Chapman & Hall/CRC, Taylor & Francis Group, USA.
- Kaiser, H.F. 1960. The application of electronic computers to factor analysis. *Educational and Psychological Measurement* 20:141–151.
- Inger, R.F. 1954. Systematics and zoogeography of Philippine Amphibia. *Fieldiana* 33:1–531.
- Inger, R.F. 1999. Distribution of amphibians in southern Asia and adjacent islands. Pp. 445–482 in *Patterns of Distribution of Amphibians* (W.E. Duellman, ed.). John Hopkins University Press, USA.
- International Union for the Conservation of Nature (IUCN). 2010. *Guidelines for Using the IUCN Red List Categories and Criteria, Version 8.1*. Available at <http://intranet.iucn.org/webfiles/doc/SSC/RedList/RedListGuidelines.pdf>. Archived by WebCite at <http://www.webcitation.org/6YZVTel9Z> on 16 May 2015.
- IUCN. 2015. *IUCN Red List of Threatened Species, Version 2013.2*. Available at <http://www.iucnredlist.org>. Archived by WebCite at <http://www.webcitation.org/6YZVxdVSE> on 16 May 2015.
- Jombart, T. 2008. Adegenet: A R package for the multivariate analysis of genetic markers. *Bioinformatics* 24:1403–1405.
- Jombart, T., S. Devillard, and F. Balloux. 2010. Discriminant analysis of principal components: A new method for the analysis of genetically structured populations. *BMC Genetics* 11:94.
- Lee, J.C. 1982. Accuracy and precision in anuran morphometrics: Artifacts of preservation. *Systematic Zoology* 31:266–281.
- Lee, J.C. 1990. Sources of extraneous variation in the study of meristic characters: The effect of size and inter-observer variability. *Systematic Zoology* 39:31–39.
- Narins, P.M., and R.R. Capranica. 1978. Communicative significance of two-note calls of the tree frog *Eleutherodactylus coqui*. *Journal of Comparative Physiology* 127:1–9.
- Oliver, L., E. Prendini, F. Kraus, and C.J. Raxworthy. 2015. Systematics and biogeography of the *Hylarana* frog (Anura: Ranidae) radiation across tropical Australasia, Southeast Asia, and Africa. *Molecular Phylogenetics and Evolution* 90:176–192.
- R Core Team. 2015. *R: A Language and Environment for Statistical Computing*, Version 3.1.2. Available at <http://www.r-project.org/>. R Foundation for Statistical Computing, Austria.
- Rand, A.S., and M.J. Ryan. 1981. The adaptive significance of a complex vocal repertoire in a Neotropical frog. *Zeitschrift für Tierpsychologie* 57:209–214.
- Rocha, L.A., A. Aleixo, G. Allen, . . . , C.C. Witt. 2014. Specimen collection: An essential tool. *Science* 344:814–815.
- Sabaj, M.H. 2016. *Standard Symbolic Codes for Institutional Resource Collections in Herpetology and Ichthyology: An Online Reference*, Version 6.5. American Society of Ichthyologists and Herpetologists, USA. Available at <http://www.asih.org/>. Archived by WebCite at <http://www.webcitation.org/6otYSPsdM> on 9 March 2017.
- Sanguila, M.B., C.D. Siler, A.C. Diesmos, O. Nuñez, and R.M. Brown. 2011. Phylogeography and conservation implications of geographic structure of genetic variation and potential species boundaries in Philippine slender toads. *Molecular Phylogenetics and Evolution* 61:333–350.
- Sanguila, M.B., K.A. Cobb, C.D. Siler, A.C. Diesmos, A.C. Alcalá, and R.M. Brown. 2016. The amphibians and reptiles of Mindanao Island, southern Philippines, II: The herpetofauna of northeast Mindanao and adjacent islands. *ZooKeys* 624:1–132.
- Savage, J.M., and W.R. Heyer. 1969. Variation and distribution of the tree-frog genus *Phyllomedusa* in Costa Rica, Central America. *Beitrage zur Neotropischen Fauna* 5:111–131.
- Savage, J.M., and W.R. Heyer. 1997. Digital webbing formulae for anurans: A refinement. *Herpetological Review* 28:131.
- Setiadi, M.I., J.A. McGuire, R.M. Brown, M. Zubairi, D.T. Iskandar, N. Andayani, J. Supriatna, and B.J. Evans. 2011. Adaptive radiation and ecological opportunity in Sulawesi and Philippine fanged frog (*Limnonectes*) communities. *American Naturalist* 178:221–240.
- Siler, C.D., J.D. McVay, A.C. Diesmos, and R.M. Brown. 2009. A new species of fanged frog, genus *Limnonectes* (Amphibia: Anura: Dicroglossidae) from southeast Mindanao Island, Philippines. *Herpetologica* 65:105–114.
- Siler, C.D., A.C. Diesmos, C.W. Linkem, M.L. Diesmos, and R.M. Brown. 2010. A new species of limestone-forest frog, genus *Platymantis* (Amphibia: Anura: Ceratobatrachidae) from central Luzon Island, Philippines. *Zootaxa* 2482:49–63. DOI: <http://dx.doi.org/10.11646/zootaxa.4048.2.3>
- Siler, C.D., L.J. Welton, J.M. Siler, J. Brown, A. Bucol, A.C. Diesmos, and R.M. Brown. 2011. Amphibians and reptiles, Luzon Island, Aurora Province and Aurora Memorial National Park, northern Philippines: New island distribution records. *Check List* 7:182–195.
- Siler, C.D., J.R. Oaks, L.K. Welton, C.W. Linkem, J. Swab, A.C. Diesmos,

- and R.M. Brown. 2012. Did geckos ride the Palawan raft to the Philippines? *Journal of Biogeography* 39:1217–1234.
- Simpson, G.G. 1961. *Principles of Animal Taxonomy*. Columbia University Press, USA.
- Sison, R.V., P.C. Gonzales, and J.W. Ferner. 1995. New records from Panay, Philippines. *Herpetological Review* 26:48–49.
- Stejneger, L. 1905. Three new frogs and one new gecko from the Philippine Islands. *Proceedings of the United States National Museum* 28:343–348.
- Stuart, B.L. 2008. The phylogenetic problem of *Huia* (Amphibia: Ranidae). *Molecular Phylogenetics and Evolution* 46:49–60.
- Supsup, C., N.M. Puna, A.A. Asis, B.R. Redoblado, M.F.G. Panaguinit, F.M. Guinto, E.B. Rico, A.C. Diesmos, R.M. Brown, and N.A. Mallari. 2016. Amphibians and reptiles of Cebu, Philippines: The poorly understood herpetofauna of an island with very little remaining natural habitat. *Asian Herpetological Research* 7:151–179.
- Swei, A., J.J.L. Rowley, D. Rödder, ..., V.T. Vredenburg. 2011. Is chytridiomycosis an emerging disease in Asia? *PLoS ONE* 6:e23179. DOI: <http://dx.doi.org/10.1371/journal.pone.0023179>
- Taylor, E.H. 1920. Philippine Amphibia. *Philippine Journal of Science* 16:213–359.
- Taylor, E.H. 1922 Additions to the herpetological fauna of the Philippine Islands. II. *Philippine Journal of Science* 21:257–303.
- Thorpe, R.S. 1975. Quantitative handling of characters useful in snake systematics with particular reference to intraspecific variation in the Ringed Snakes *Natrix natrix* (L.). *Biological Journal of the Linnean Society* 7:27–43.
- Thorpe, R.S. 1983a. A review of the numerical methods for recognizing and analyzing racial differentiation. Pp. 404–423 in *Numerical Taxonomy: Proceedings of a NATO Advanced Studies Institute NATO ASI series, Volume G1* (J. Felsenstein, ed.). Springer Verlag, Germany.
- Thorpe, R.S. 1983b. A biometric study of the effects of growth on the analysis of geographic variation: Tooth number in green geckos (Reptilia: *Phelsuma*). *Journal of Zoology* 201:13–26.
- Turan, C. 1999. A note on the examination of morphometric differentiation among fish populations: The Truss System. *Turkish Journal of Zoology* 23:259–263.
- Voris, H.K. 2000. Maps of Pleistocene sea levels in Southeast Asia: Shorelines, river systems, time durations. *Journal of Biogeography* 27:1153–1167.
- Welton, L.J., C.D. Siler, D. Bent, A.C. Diesmos, M.R. Duya, R. Dugay, E.L. Rico, M. van Weerd, and R.M. Brown. 2010. A spectacular new Philippine monitor lizard reveals a hidden biogeographic boundary and a novel flagship species for conservation. *Biology Letters* 6:654–658.
- Wiens, J.J., J.S. Sukumaran, R.A. Pyron, and R.M. Brown. 2009. Evolutionary and biogeographic origins of high tropical diversity in old world frogs (Ranidae). *Evolution* 64:1558–5646.
- Wiley, E.O. 1978. The evolutionary species concept reconsidered. *Systematic Zoology* 21:17–26.
- Yumul, G.P., Jr., C.B. Dimalanta, R.A. Tamayo, Jr., and R.C. Maury. 2003. Collision, subduction and accretion events in the Philippines: A synthesis. *Island Arc* 12:77–91.
- Yumul, G.P., Jr., C.B. Dimalanta, E.J. Marquez, and K.L. Queaño. 2009a. Onland signatures of the Palawan microcontinental block and Philippine mobile belt collision and crustal growth process: A review. *Journal of Asian Earth Sciences* 34:610–623.
- Yumul, G., C.B. Dimalanta, K.L. Queaño, and E.J. Marquez. 2009b. Philippines, geology. Pp. 732–738 in *Encyclopedia of Islands* (R. Gillespie and D. Clague, eds.). University of California Press, USA.
- Zamoros, L.R., M.G.A. Montes, K.L. Queaño, E.J. Marquez, C.B. Dimalanta, J.A.S. Gabo, and G.P. Yumul, Jr. 2008. Buruanga Peninsula and Antique Range: Two contrasting terranes in northwest Panay, Philippines featuring an arc-continent collision zone. *Island Arc* 17:443–457.
- (16°26'16.8"N, 121°13'30.0"E; datum = WGS84): PNM 9727 (holotype), PNM 9728–45, KU 325894–932, 325934–45, 329950–51, 308655, 308665, 308667, 308687, 308705, 308706, 308712, 308775, 308776 (Paratopotypes); AURORA PROVINCE, *Municipality of San Luis*, Barangay Real, Sitio Minoli: KU 322548, 322549 (paratypes); *Municipality of Dingalan*, Mt. Mingan: MVD 066, 068, 069, and 074, DSB 3728 and 3745 (six uncataloged specimens, deposited at PNM)
- Sanguirana everetti*.—MINDANAO, LANA DEL SUR PROVINCE, *Lake Lanao*, Camp Keithley: CAS-SU 2141; ZAMBOANGA: CAS 61872; SOUTH COTABATO PROVINCE, “near Saub,” MCZ 14083–84; *Municipality of Tupi*, Barangay Kablon, Masbang creek: PNM 469; *Municipality of Tiboli*, Barangay Salacafe, Lake Parker: PNM 3002–07, 3009–12, 3018–19, 3059, 3073; *Municipality of Tampakan*, Barangay Tablu, Sitio Datal Mangisi: KU 327523, 327527, 327529; Sitio Tukuyamal: KU 327525, 327526, 327528.
- Sanguirana igorota*.—LUZON ISLAND: KALINGA-APAYAO PROVINCE, KALINGA SUBPROVINCE, *Municipality of Balbalan*, Barangay Balbalan: CAS 61484 (EHT F789; holotype of *Rana igorota*); CAS 61483, 61485–89, MCZ 14096–98 (paratypes of *Rana igorota*); NUEVA VIZCAYA PROVINCE, *Municipality of Quezon*, Barangay Maddingat, Mt. Palali: KU 308688, 308707–11, 325843–93; Benguet Province, *Municipality of Kabayan*, Barangay Apunan: PNM 158, 162; IFUGAO PROVINCE, *Municipality of Banaue*, Barangay Bayninan, PNM 741, 742; ILOCOS PROVINCE, *Municipality of Adams*, Barangay Adams, Mt. Pao: KU 329824–89.
- Sanguirana luzonensis*.—LUZON ISLAND, AURORA PROVINCE, *Municipality of Carmen*, Aurora National Park: PNM 5742–5765; CMNH 5605–11; 5612–30; *Municipality of Maria Aurora*, Aurora Memorial National Park “tower site,” KU 322566–67; Barangay Villa Aurora, Sitio Dimani, Aurora Memorial National Park: KU 322568–87; Barangay Villa Aurora, Aurora Memorial National Park, Mt. Dayap, area known locally as “Siete”: KU 322588–90; *Municipality of Baler*, Barangay Zabali, Aurora State College of Technology (ASCOT): KU 322591–619; *Municipality of San Luis*, Barangay Real, Sitio Minoli: KU 322620–28, 322520–39, 322540–47; Barangay Lipimental: KU 322550–65, 322503–19; MOUNTAIN PROVINCE, *Municipality of Bontoc*: MCZ 10556; LAGUNA PROVINCE, *Municipality of Los Baños*, Mt. Makiling: MCZ 23178–79, 14142–45; ZAMBALES PROVINCE: *Municipality of Masinloc*, Barangay Coto: CMNH 4171–72, 4279–85; PNM 2371, 2378–84, 2496–98; TRAIL BETWEEN FAMY (LAGUNA PROV.) AND INFANTA (TAYABAS PROV.): CAS 61819 (holotype of *R. tafti*); BANGUET PROVINCE, *Municipality of Baguio*, Baguio City: CM 3271, 3273–78, 3280–81, 3283, MCZ 10482–84 (topotypes of *R. guerreroi*); QUEZON PROVINCE, *Municipality of Polillo*, Barangay Pinaglubayan: KU 302380, 307649–51; Barangay Salipsip, Sition Kapilijan: KU 307652–60; QUEZON PROVINCE: 303561–63; CATANDUANES, *Municipality of San Miguel*, Sulong: KU 308067, 308090–98; *Municipality of Gigmoto*, Barangay San Pedro: KU 308121, 308139, 308158–69; CAMARINES DEL SUR PROVINCE: *Municipality of Tabaco*, Barangay Comon: KU 306495–98, 306503–06; CAMARINES DEL NORTE PROVINCE, *Municipality of Labo*, Barangay Tulay na Lupa: KU 306499–502, 306507–306509; ISABELA PROVINCE, *Municipality of Cabagan*, Barangay Garita, Mitra Ranch: KU 307636; NUEVA VIZCAYA PROVINCE, *Municipality of Quezon*, Barangay Maddingat, Mt. Palali: KU 308655, 308665, 308667, 308687, 308705–06, 308712, 308774–76, 308835–36, 322501–40; CAMARINES NORTE PROVINCE: *Municipality of Labo*, Barangay Tulay Na Lupa: KU 313647–313681; POLILLO ISLAND: POLILLO PROVINCE, *Burdeos*: CAS 62448 (holotype of *R. merrilli*).
- Sanguirana mearnsi*.—MINDANAO ISLAND: DAVAO ORIENTAL PROVINCE, *Municipality of Baganga*, “Baganga River, east coast mountain range, 300–1500 m above sea level”: USNM 35258 (holotype of *Rana mearnsi*); AGUSAN DEL NORTE PROVINCE: *Tagibo and Daydayan rivers*: S. side of Mt. Hilong-hilong: CAS 13922–25, 137533–34; *Municipality of Remedios T. Romualdez*, Eye Falls, intersection of Dayhapan and Agan Rivers, Mt. Hilong-hilong: KU 332972–007; *Municipality of Cabadbaran*, Barangay Tag-Ibo, Dalaydayan River: USNM 305594–97; MISAMIS ORIENTAL PROVINCE, *Municipality of Gingoog City*, Barangay Lumotan, Sitio San Isidro, Mt. Balatukan: KU 319777–82; Barangay Lawan, Sitio Kibuko, Mt. Lumot: KU 333014–67; DAVAO DEL NORTE PROVINCE, *Municipality of New Bataan*, Sitio Liboton, Mt. Puting Bato (Malaya River drainage): CMNH 5603–04; DAVAO CITY PROVINCE, *Municipality of Paquibato*, Barangay Malambuan, Mt. Makaayat: PNM 2880–81; DAVAO DEL SUR PROVINCE, *Mt. Apo*: KU 327521; SAMAR ISLAND: NORTHERN SAMAR PROVINCE: *Municipality of San Isidro*: Barangay Matuquinao: CAS-SU 18160, 18167–69, 18172–73; EASTERN SAMAR PROVINCE: *Municipality of Taft*, Barangay San Rafael: KU 338613–34, 338648–61, 310697–98; WESTERN SAMAR PROVINCE: *Municipality of San Jose de Buan*; Barangay Uno, Mt. Huraw: KU 338021, 338635–45; LEYTE ISLAND: CABALIAN: MCZ A-23190 (holotype of *Rana everetti albotuberculata*), A-23188–89, A-132410–14, A-132416–19 (topotypes *Rana everetti*

ZooBank.org registration LSID: 19B2F7D9-DC20-4821-991B-55AAE60F24A1

Published on 12 October 2017

## APPENDIX

### Specimens Examined

All specimens are from the Philippines.

*Sanguirana acai*.—See holotype and paratypes sections.

*Sanguirana aurantipunctata*.—LUZON ISLAND, NUEVA VIZCAYA PROVINCE, *Municipality of Quezon*, Barangay Maddingat, Sitio Parola

*albotuberculata*); BOHOL ISLAND, BOHOL PROVINCE, *Municipality of Cantub*, Sierra Bullones: CAS 137028.

*Sanguirana sanguinea*.—PALAWAN ISLAND: CMNH 3700–01, 3733, 3737; PALAWAN PROVINCE, *Puerto Princesa City*, Barangay Irawan: KU 308987, 309016, 309019–21, 309023–24, 309026, 309027–31, 309033, 309037, 309094; *Municipality of Rizal*, Mt. Bintangor: KU 311312; *Municipality of Brooke's Point*, Barangay Mainit, Mainit Falls: KU 309570; Barangay Samarinana, Mt. Mantalingajan, area known locally as "Pitang": KU 309577, 309578, 309587.

*Sanguirana tipanan*.—LUZON ISLAND, AURORA PROVINCE, *Municipality of San Luis*, Barangay Villa Aurora, Aurora National Park: PNM 5727 (holotype of *Rana tipanan*), CMNH 5579–86, 5588, 5590–99, PNM 5720–26, 5728–36, 5738–41 (paratypes of *Rana tipanan*); *Municipality of Maria Aurora*: Aurora Memorial National Park: KU 322755–66; Barangay Villa Aurora, Aurora Memorial National Park, Mt. Dayap, area known locally as "Siete": KU 322767–94; *Municipality of San Luis*: Barangay Lipimental: KU 322795–805, 322808–58, 323013; Barangay Real, Sitio Minoli: 322806–07, 323014.