

## SALERO RANCH IMAGE GALLERY



Scrub grassland with *Bothriochloa barbinodis*, Salero Ranch, 24 September 2013.

This gallery of 840 images is a supplement to the flora of Salero Ranch in central Santa Cruz County, Arizona. Images are organized by major groups (Pteridophytes, Gymnosperms, Magnoliids, Eudicots, Monocots) and then alphabetically by family, genus, and species. More information about the study area, including maps, history, floristics, and an annotated checklist can be accessed at <https://canotia.org/volumes/vol16/SaleroRanchFlora.pdf>.

All photographs by Susan D. Carnahan.



SALERO RANCH IMAGE GALLERY

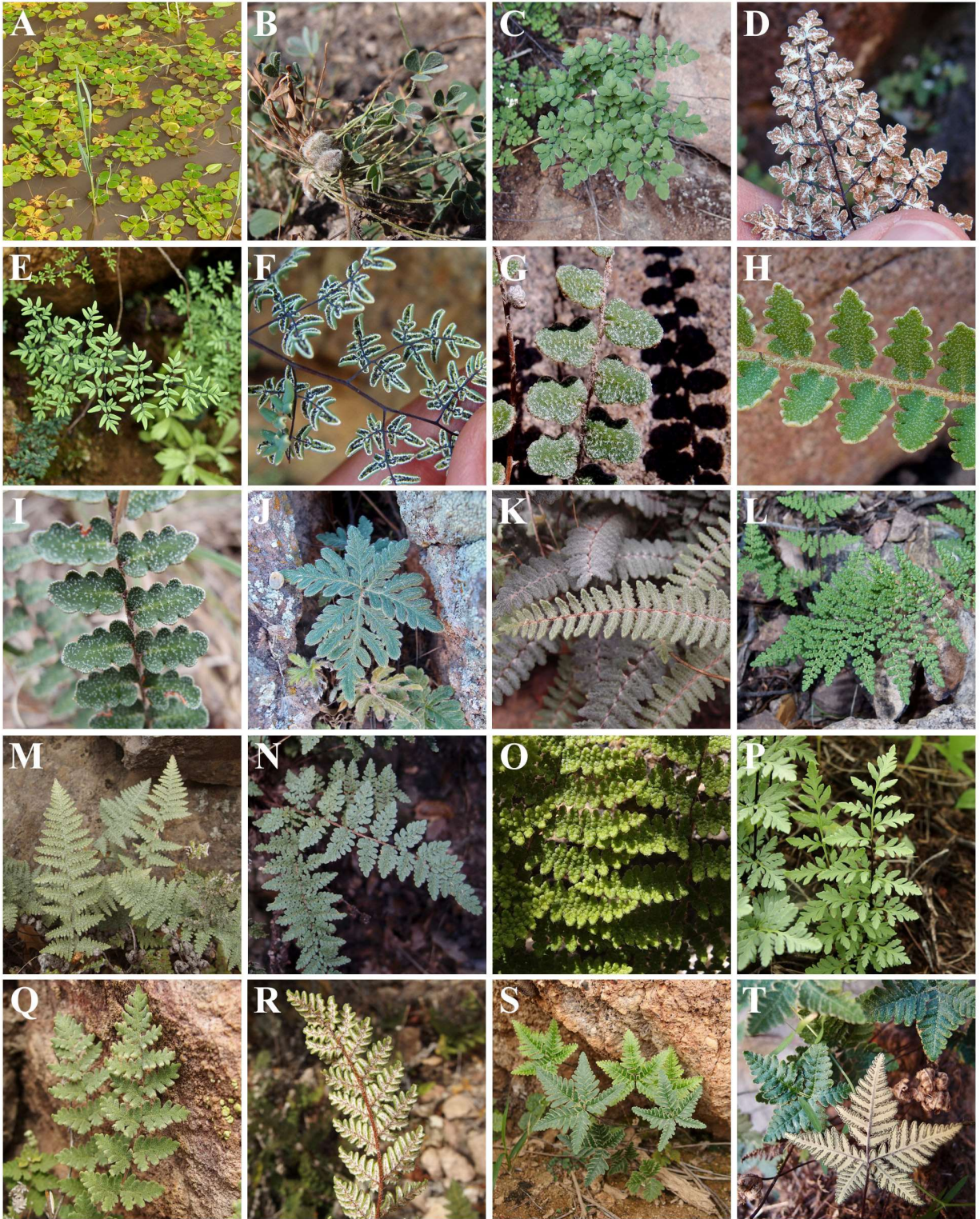


Figure 1. **PTERIDOPHYTES. Marsileaceae:** (A & B) *Marsilea mollis*. **Pteridaceae:** (C & D) *Argyrochosma incana*; (E & F) *Argyrochosma limitanea* subsp. *limitanea*; (G) *Astrolepis integerrima*; (H) *Astrolepis sinuata*; (I) *Astrolepis windhamii*; (J) *Bommeria hispida*; (K) *Myriopteris aurea*; (L) *Myriopteris fendleri*; (M) *Myriopteris lindheimeri*; (N) *Myriopteris rufa*; (O) *Myriopteris wootonii*; (P) *Myriopteris wrightii*; (Q & R) *Notholaena grayi*; (S & T) *Notholaena standleyi*.



SALERO RANCH IMAGE GALLERY



Figure 2. **PTERIDOPHYTES** cont. **Pteridaceae**: (A) *Pellaea atropurpurea*; (B) *Pellaea intermedia*; (C) *Pellaea truncata*; (D & E) *Pellaea wrightiana*; (F & G) *Pentagramma triangularis* subsp. *maxonii*. **Salviniaceae**: (H & I) *Azolla filiculoides*. **Selaginellaceae**: (J) *Selaginella rupincola*. **Woodsiaceae**: (K & L) *Woodsia cochisensis*. **GYMNOSPERMS**. **Cupressaceae**: (M–O) *Juniperus arizonica*; (P–R) *Juniperus deppeana*. **Pinaceae**: (S & T) *Pinus discolor*.



SALERO RANCH IMAGE GALLERY



Figure 3. **MAGNOLIIDS. Aristolochiaceae:** (A & B) *Aristolochia watsonii*. **EUDICOTS. Acanthaceae:** (C & D) *Anisacanthus thurberi*; (E) *Carlowrightia arizonica*; (F) *Elytraria imbricata*; (G) *Justicia longii*; (H) *Tetramerium nervosum*. **Aizoaceae:** (I) *Trianthema portulacastrum*. **Amaranthaceae:** (J) *Alternanthera caracasana*; (K) *Amaranthus palmeri*; (L) *Amaranthus torreyi*; (M) *Atriplex canescens*; (N) *Atriplex elegans*; (O) *Blitum nuttallianum*; (P) *Chenopodium arizonicum*; (Q) *Dysphania graveolens*; (R) *Froelichia arizonica*; (S) *Gomphrena caespitosa*; (T) *Gomphrena nitida*.



SALERO RANCH IMAGE GALLERY



Figure 4. **EUDICOTS** cont. **Amaranthaceae**: (A) *Gomphrena sonora*; (B) *Guilleminea densa*; (C) *Iresine heterophylla*; (D) *Salsola tragus*; (E) *Tidestromia lanuginosa*. **Anacardiaceae**: (F) *Rhus aromatica* var. *trilobata*; (G) *Rhus virens* var. *choriophylla*; (H) *Toxicodendron radicans*. **Apiaceae**: (I) *Bowlesia incana*; (J) *Cyclospermum leptophyllum*; (K) *Daucus pusillus*; (L) *Lomatium nevadense* var. *parishii*; (M) *Spermolepis lateriflora*. **Apocynaceae**: (N & O) *Asclepias asperula*; (P) *Asclepias elata*; (Q) *Asclepias linaria*; (R) *Asclepias nummularia*; (S) *Asclepias nyctaginifolia*; (T) *Asclepias quinqueidentata*.



SALERO RANCH IMAGE GALLERY

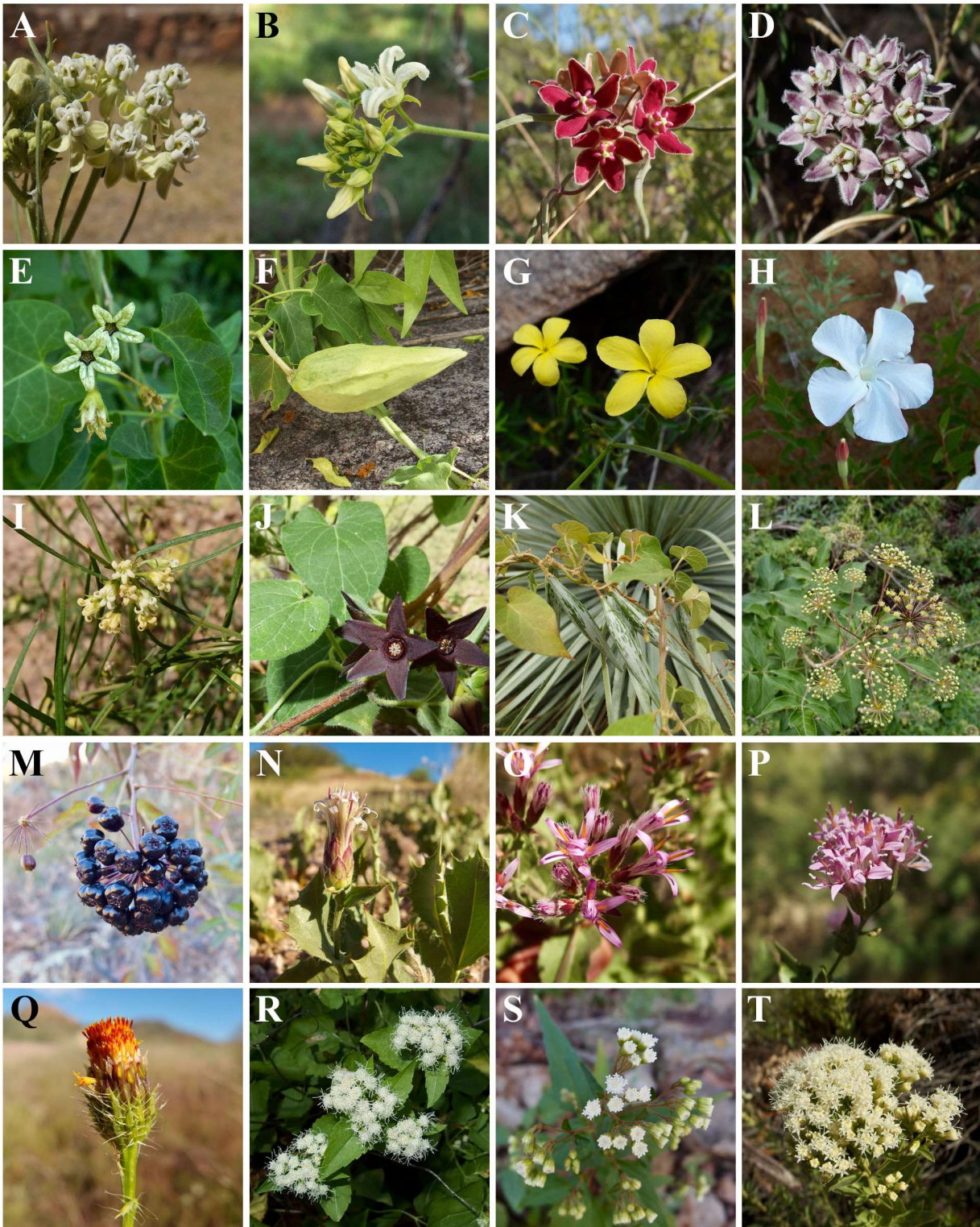


Figure 5. **EUDICOTS** cont. **Apocynaceae**: (A) *Asclepias subverticillata*; (B) *Cynanchum ligulatum*; (C) *Funastrum crispum*; (D) *Funastrum heterophyllum*; (E & F) *Gonolobus arizonicus*; (G) *Haplophyton cimidum*; (H) *Mandevilla brachysiphon*; (I) *Metastelma mexicanum*; (J & K) *Polystemma* sp. **Araliaceae**: (L & M) *Aralia humilis*. **Asteraceae**: (N) *Acourtia nana*; (O) *Acourtia thurberi*; (P) *Acourtia wrightii*; (Q) *Adenophyllum porophyllum*; (R) *Ageratina herbacea*; (S) *Ageratina paupercula*; (T) *Ageratina thyrsoiflora*.



SALERO RANCH IMAGE GALLERY



Figure 6. **EUDICOTS cont. Asteraceae:** (A) *Aldama cordifolia*; (B) *Amauriopsis dissecta*; (C) *Ambrosia confertiflora*; (D) *Ambrosia monogyra*; (E) *Artemisia dracunculus*; (F) *Artemisia ludoviciana* subsp. *ludoviciana*; (G) *Artemisia ludoviciana* subsp. *mexicana*; (H) *Baccharis pteronioides*; (I) *Baccharis salicifolia*; (J) *Baccharis sarothroides*; (K) *Baccharis thesioides*; (L) *Bahia absinthifolia*; (M) *Baileya multiradiata*; (N) *Bebbia juncea* var. *aspera*; (O) *Bidens aurea*; (P) *Bidens leptoccephala*; (Q) *Bidens pilosa*; (R) *Brickellia amplexicaulis*; (S) *Brickellia baccharidea*; (T) *Brickellia betonicifolia*.



SALERO RANCH IMAGE GALLERY



Figure 7. EUDICOTS cont. Asteraceae: (A) *Brickellia californica*; (B) *Brickellia coulteri* var. *brachiata*; (C) *Brickellia eupatorioides* var. *chlorolepis*; (D) *Brickellia floribunda*; (E) *Brickellia venosa*; (F) *Calycoseris wrightii*; (G) *Carminatia tenuiflora*; (H) *Carphochaete bigelovii*; (I) *Chaetopappa ericoides*; (J) *Cirsium neomexicanum*; (K) *Coreocarpus arizonicus*; (L) *Cosmos parviflorus*; (M) *Diaperia verna*; (N) *Dyssodia papposa*; (O) *Encelia farinosa*; (P) *Ericameria cuneata* var. *spathulata*; (Q) *Ericameria laricifolia*; (R) *Erigeron arisolius*; (S) *Erigeron canadensis*; (T) *Erigeron divergens*.



SALERO RANCH IMAGE GALLERY



Figure 8. **EUDICOTS cont. Asteraceae:** (A) *Erigeron incomptus*; (B) *Erigeron neomexicanus*; (C) *Erigeron sceptrifer*; (D) *Eriophyllum lanosum*; (E) *Fleischmannia sonora*; (F) *Gaillardia pinnatifida*; (G) *Galinsoga parviflora* var. *semicalva*; (H) *Gamochaeta stagnalis*; (I) *Guardiola platyphylla*; (J) *Gutierrezia microcephala*; (K) *Helenium thurberi*; (L) *Helianthus petiolaris*; (M) *Heliomeris longifolia* var. *annua*; (N) *Heliomeris multiflora*; (O) *Heterosperma pinnatum*; (P) *Heterotheca fulcrata* var. *senilis*; (Q) *Heterotheca subaxillaris* var. *latifolia*; (R) *Hymenothrix wislizeni*; (S) *Hymenothrix wrightii*; (T) *Isocoma tenuisecta*.



SALERO RANCH IMAGE GALLERY



Figure 9. **EUDICOTS cont. Asteraceae:** (A) *Koanophyllon palmeri*; (B) *Lactuca serriola*; (C) *Laennecia sopherifolia*; (D) *Lagascea decipiens*; (E) *Lasianthaea podocephala*; (F) *Logfia filaginoides*; (G) *Machaeranthera tagetina*; (H) *Machaeranthera tanacetifolia*; (I) *Malacothrix fendleri*; (J) *Malacothrix glabrata*; (K) *Malacothrix stebbinsii*; (L) *Melampodium longicorne*; (M) *Melampodium strigosum*; (N) *Packera neomexicana*; (O) *Parthenice mollis*; (P) *Pectis cylindrica*; (Q) *Pectis filipes*; (R) *Pectis longipes*; (S) *Pectis prostrata*; (T) *Porophyllum gracile*.



SALERO RANCH IMAGE GALLERY



Figure 10. **EUDICOTS cont. Asteraceae:** (A) *Porophyllum ruderale* var. *macrocephalum*; (B) *Pseudognaphalium canescens*; (C) *Pseudognaphalium leucocephalum*; (D) *Pseudognaphalium luteoalbum*; (E) *Pseudognaphalium stramineum*; (F) *Rafinesquia californica*; (G) *Rafinesquia neomexicana*; (H) *Roldana hartwegii*; (I) *Sanvitalia abertii*; (J) *Schkuhria pinnata*; (K) *Senecio flaccidus* var. *flaccidus*; (L) *Solidago velutina*; (M) *Sonchus asper*; (N) *Sonchus oleraceus*; (O) *Stephanomeria pauciflora*; (P) *Stephanomeria tenuifolia*; (Q) *Stephanomeria thurberi*; (R) *Stevia micrantha*; (S) *Stevia serrata*; (T) *Symphyotrichum subulatum* var. *parviflorum*.



SALERO RANCH IMAGE GALLERY



Figure 11. **EUDICOTS cont. Asteraceae:** (A) *Tagetes micrantha*; (B) *Taraxacum officinale*; (C) *Thelesperma megapotamicum*; (D) *Thymophylla concinna*; (E) *Thymophylla pentachaeta* var. *belenidium*; (F) *Tithonia thurberi*; (G) *Trixis californica*; (H) *Uropappus lindleyi*; (I) *Verbesina encelioides*; (J) *Verbesina longifolia*; (K) *Viguiera dentata* var. *dentata*; (L) *Viguiera dentata* var. *lancifolia*; (M) *Xanthisma gracile*; (N) *Xanthisma spinulosum*; (O) *Xanthium strumarium*; (P) *Xanthocephalum gymnospermoides*; (Q) *Zinnia acerosa*; (R) *Zinnia peruviana*. **Berberidaceae:** (S) *Berberis wilcoxii*. **Bignoniaceae:** (T) *Chilopsis linearis* subsp. *arcuata*.



SALERO RANCH IMAGE GALLERY



Figure 12. **EUDICOTS cont. Bignoniaceae:** (A) *Tecoma stans* var. *angustata*. **Boraginaceae:** (B) *Amsinckia intermedia*; (C) *Cryptantha barbiger*a; (D) *Cryptantha pterocarya*; (E & F) *Eremocarya micrantha*; (G) *Johnstonea angustifolia*; (H & I) *Johnstonea pusilla*; (J & K) *Lappula occidentalis*; (L) *Pectocarya heterocarpa*; (M) *Pectocarya platycarpa*; (N) *Pectocarya recurvata*; (O) *Plagiobothrys arizonicus*. **Brassicaceae:** (P & Q) *Boechera perennans*; (R) *Capsella bursa-pastoris*; (S) *Chorispora tenella*; (T) *Descurainia pinnata*.



SALERO RANCH IMAGE GALLERY



Figure 13. **EUDICOTS cont. Brassicaceae:** (A) *Descurainia sophia*; (B) *Dryopetalon runcinatum*; (C) *Hesperidanthus linearifolius*; (D) *Lepidium oblongum*; (E) *Lepidium thurberi*; (F) *Lepidium virginicum*; (G) *Nasturtium officinale*; (H) *Pennellia micrantha*; (I) *Physaria gordonii*; (J) *Sisymbrium irio*; (K) *Thysanocarpus curvipes*; (L) *Tomostima cuneifolia*. **Cactaceae:** (M) *Carnegiea gigantea*; (N) *Coryphantha vivipara* var. *bisbeeana*; (O) *Cylindropuntia fulgida* var. *fulgida*; (P) *Cylindropuntia fulgida* var. *mamillata*; (Q) *Cylindropuntia spinosior*; (R) *Echinocereus fendleri*; (S) *Echinocereus rigidissimus*; (T) *Echinocereus santaritensis*.



SALERO RANCH IMAGE GALLERY



Figure 14. **EUDICOTS cont. Cactaceae:** (A) *Ferocactus wislizeni*; (B) *Mammillaria grahamii*; (C) *Mammillaria macdougalii*; (D & E) *Mammillaria wrightii* var. *wilcoxii*; (F) *Opuntia chlorotica*; (G) *Opuntia engelmannii* var. *engelmannii*; (H) *Opuntia engelmannii* var. *laevis*; (I) *Opuntia phaeacantha*; (J) *Opuntia santarita*. **Campanulaceae:** (K) *Lobelia fenestralis*; (L) *Triodanis biflora*; (M) *Triodanis holzingeri*. **Cannabaceae:** (N) *Celtis pallida*; (O) *Celtis reticulata*. **Caprifoliaceae:** (P) *Valeriana sorbifolia*. **Caryophyllaceae:** (Q) *Cerastium texanum*; (R) *Drymaria depressa*; (S & T) *Drymaria glandulosa*.



SALERO RANCH IMAGE GALLERY



Figure 15. **EUDICOTS cont.** **Caryophyllaceae:** (A) *Drymaria molluginea*; (B) *Herniaria hirsuta* var. *cinerea*; (C) *Loeflingia squarrosa*; (D) *Silene antirrhina*; (E) *Silene laciniata*. **Cleomaceae:** (F) *Polanisia dodecandra* subsp. *trachysperma*. **Cochlospermaceae:** (G) *Amoreuxia palmatifida*. **Comandraceae:** (H) *Comandra umbellata*. **Convolvulaceae:** (I) *Convolvulus equitans*; (J) *Cuscuta chinensis* var. *applanata*; (K) *Cuscuta erosa*; (L) *Evolvulus alsinoides*; (M) *Evolvulus arizonicus*; (N) *Evolvulus nuttallianus*; (O) *Evolvulus sericeus*; (P) *Ipomoea barbatisepala*; (Q) *Ipomoea capillacea*; (R) *Ipomoea costellata*; (S) *Ipomoea cristulata*; (T) *Ipomoea hederacea*.



SALERO RANCH IMAGE GALLERY



Figure 16. **EUDICOTS cont.** **Convolvulaceae:** (A) *Ipomoea muricata*; (B) *Ipomoea ternifolia* var. *leptotoma*; (C) *Ipomoea thurberi*. **Crassulaceae:** (D) *Crassula connata*; (E & F) *Graptopetalum bartramii*; (G) *Sedum cockerellii*. **Cucurbitaceae:** (H) *Apodanthera undulata*; (I) *Cucurbita digitata*; (J) *Cucurbita foetidissima*; (K) *Echinopepon wrightii*; (L & M) *Marah gilensis*; (N) *Sicyosperma gracile*. **Ericaceae:** (O) *Arctostaphylos pungens*. **Euphorbiaceae:** (P) *Acalypha neomexicana*; (Q) *Acalypha ostryifolia*; (R) *Argythamnia serrata*; (S) *Cnidocolus angustidens*; (T) *Croton ciliatoglandulifer*.



SALERO RANCH IMAGE GALLERY



Figure 17. **EUDICOTS cont. Euphorbiaceae:** (A) *Croton pottsii*; (B) *Euphorbia albomarginata*; (C) *Euphorbia arizonica*; (D) *Euphorbia bilobata*; (E) *Euphorbia capitellata*; (F) *Euphorbia cuphosperma*; (G) *Euphorbia exstipulata*; (H) *Euphorbia florida*; (I) *Euphorbia heterophylla*; (J) *Euphorbia hirta*; (K) *Euphorbia hyssopifolia*; (L) *Euphorbia indivisa*; (M) *Euphorbia micromera*; (N) *Euphorbia pediculifera*; (O) *Euphorbia prostrata*; (P) *Euphorbia revoluta*; (Q) *Euphorbia serpillifolia*; (R) *Euphorbia setiloba*; (S & T) *Jatropha macrorhiza*.



SALERO RANCH IMAGE GALLERY



Figure 18. **EUDICOTS** cont. **Euphorbiaceae:** (A) *Manihot angustiloba*; (B & C) *Manihot davisiae*; (D) *Tragia laciniata*; (E) *Tragia nepetifolia*. **Fabaceae:** (F & G) *Acaciella angustissima*; (H) *Acmispon brachycarpus*; (I) *Acmispon greenei*; (J) *Acmispon oroboides*; (K) *Amorpha fruticosa*; (L) *Astragalus allochrous*; (M) *Astragalus arizonicus*; (N) *Astragalus nothoxys*; (O) *Astragalus nuttallianus*; (P) *Calliandra eriophylla*; (Q) *Calliandra humilis* var. *humilis*; (R) *Calliandra humilis* var. *reticulata*; (S) *Chamaecrista nictitans* var. *leptadenia*; (T) *Chamaecrista serpens* var. *wrightii*.



SALERO RANCH IMAGE GALLERY



Figure 19. **EUDICOTS cont. Fabaceae:** (A) *Cologania angustifolia*; (B) *Coursetia caribaea* var. *sericea*; (C & D) *Crotalaria pumila*; (E) *Dalea albiflora*; (F) *Dalea exigua*; (G) *Dalea formosa*; (H) *Dalea grayi*; (I) *Dalea mollissima*; (J) *Dalea nana*; (K) *Dalea pogonathera*; (L) *Dalea pringlei*; (M) *Dalea pulchra*; (N) *Dalea versicolor* var. *sessilis*; (O) *Dalea wrightii*; (P) *Desmanthus cooleyi*; (Q) *Desmodium batocaulon*; (R) *Desmodium cinerascens*; (S & T) *Desmodium grahamii*.



SALERO RANCH IMAGE GALLERY

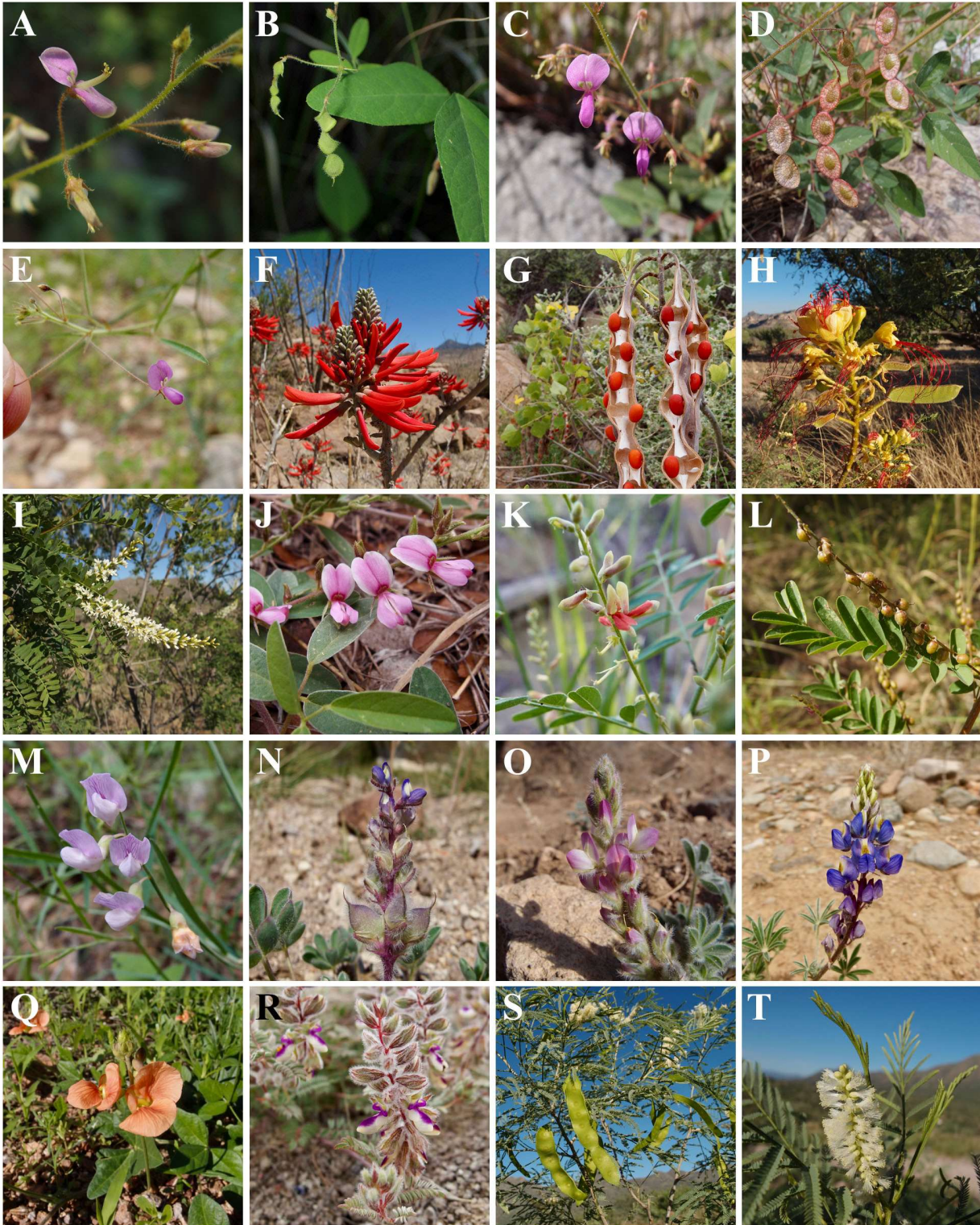


Figure 20. **EUDICOTS cont. Fabaceae:** (A & B) *Desmodium neomexicanum*; (C & D) *Desmodium psilocarpum*; (E) *Desmodium rosei*; (F & G) *Erythrina flabelliformis*; (H) *Erythrostemmon gilliesii*; (I) *Eysenhardtia orthocarpa*; (J) *Galactia wrightii*; (K & L) *Indigofera sphaerocarpa*; (M) *Lathyrus graminifolius*; (N) *Lupinus brevicaulis*; (O) *Lupinus concinnus*; (P) *Lupinus sparsiflorus*; (Q) *Macroptilium gibbosifolium*; (R) *Marina calycosa*; (S & T) *Mariosousa millefolia*.



SALERO RANCH IMAGE GALLERY

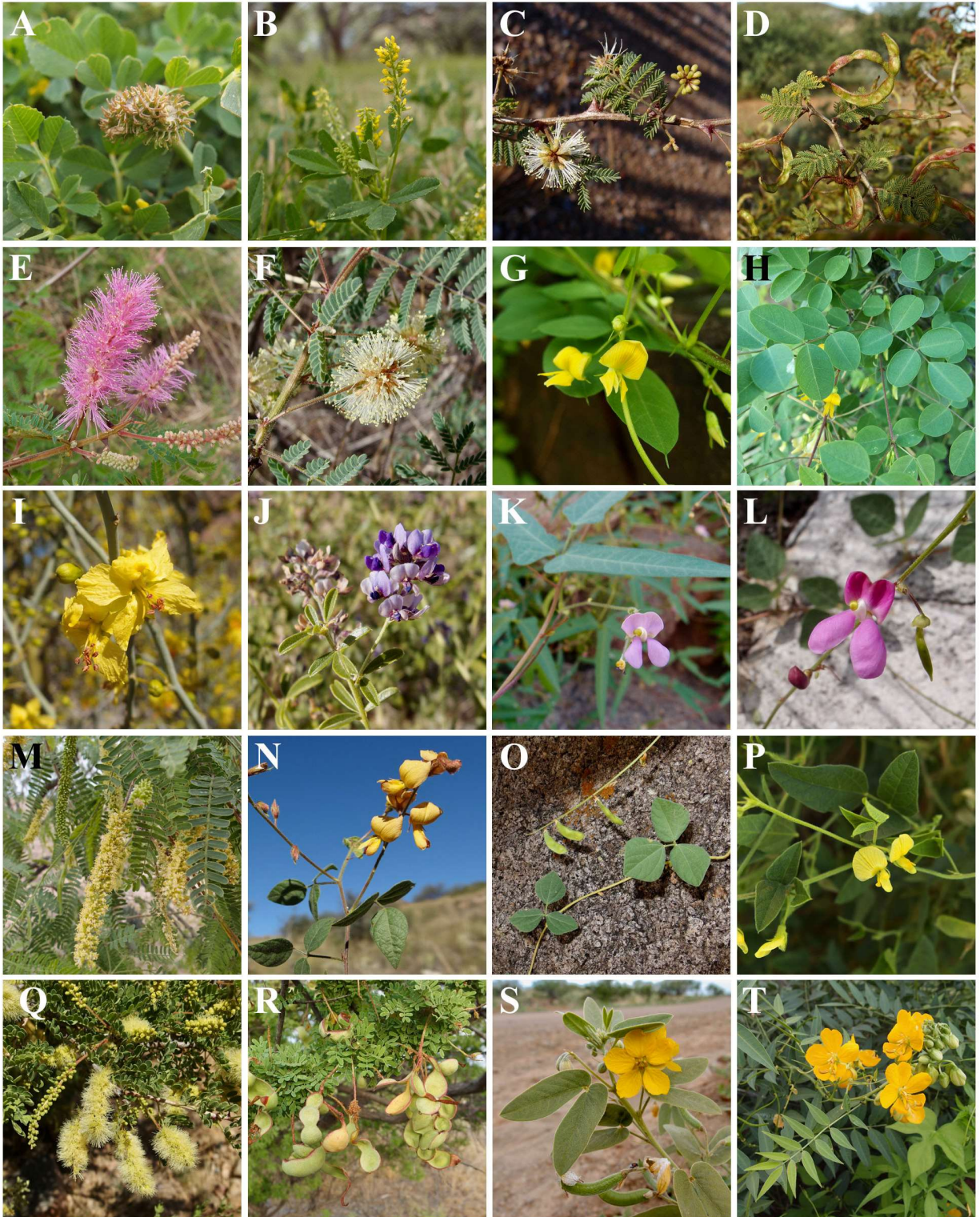


Figure 21. **EUDICOTS cont. Fabaceae:** (A) *Medicago polymorpha*; (B) *Melilotus indicus*; (C & D) *Mimosa aculeaticarpa* var. *biuncifera*; (E) *Mimosa dysocarpa*; (F) *Mimosa grahamii*; (G & H) *Nissolia schottii*; (I) *Parkinsonia florida*; (J) *Pedimelum tenuiflorum*; (K) *Phaseolus acutifolius*; (L) *Phaseolus ritensis*; (M) *Prosopis velutina*; (N) *Rhynchosia edulis*; (O) *Rhynchosia minima*; (P) *Rhynchosia senna* var. *texana*; (Q & R) *Senegalia greggii*; (S) *Senna bauhinioides*; (T) *Senna hirsuta* var. *glaberrima*.



SALERO RANCH IMAGE GALLERY



Figure 22. **EUDICOTS** cont. **Fabaceae**: (A) *Sphinctospermum constrictum*; (B) *Tephrosia leiocarpa*; (C) *Tephrosia tenella*; (D & E) *Vachellia constricta*; (F) *Vicia ludoviciana*; (G) *Zornia reticulata*. **Fagaceae**: (H) *Quercus arizonica*; (I & J) *Quercus emoryi*; (K) *Quercus hypoleucoides*; (L) *Quercus oblongifolia*; (M) *Quercus toumeyi*. **Fouquieriaceae**: (N) *Fouquieria splendens*. **Garryaceae**: (O) *Garrya wrightii*. **Gentianaceae**: (P) *Zeltnera arizonica*; (Q) *Zeltnera nudicaulis*. **Geraniaceae**: (R) *Erodium cicutarium*; (S) *Erodium texanum*. **Heliotropiaceae**: (T) *Euploca fruticosa*.



SALERO RANCH IMAGE GALLERY



Figure 23. **EUDICOTS cont. Heliotropiaceae:** (A) *Euploca procumbens*. **Hydrangeaceae:** (B) *Fendlera rupicola*; (C) *Philadelphus microphyllus*. **Hydrophyllaceae:** (D) *Eucrypta micrantha*; (E) *Phacelia affinis*; (F) *Phacelia arizonica*; (G) *Phacelia bombycina*; (H) *Phacelia caerulea*; (I) *Phacelia distans*; (J) *Phacelia sonoitensis*. **Juglandaceae:** (K & L) *Juglans major*. **Krameriaceae:** (M & N) *Krameria erecta*; (O) *Krameria lanceolata*. **Lamiaceae:** (P) *Clerodendrum coulteri*; (Q) *Hedeoma dentata*; (R) *Lamium amplexicaule*; (S) *Marrubium vulgare*; (T) *Monarda citriodora* subsp. *austromontana*.



SALERO RANCH IMAGE GALLERY

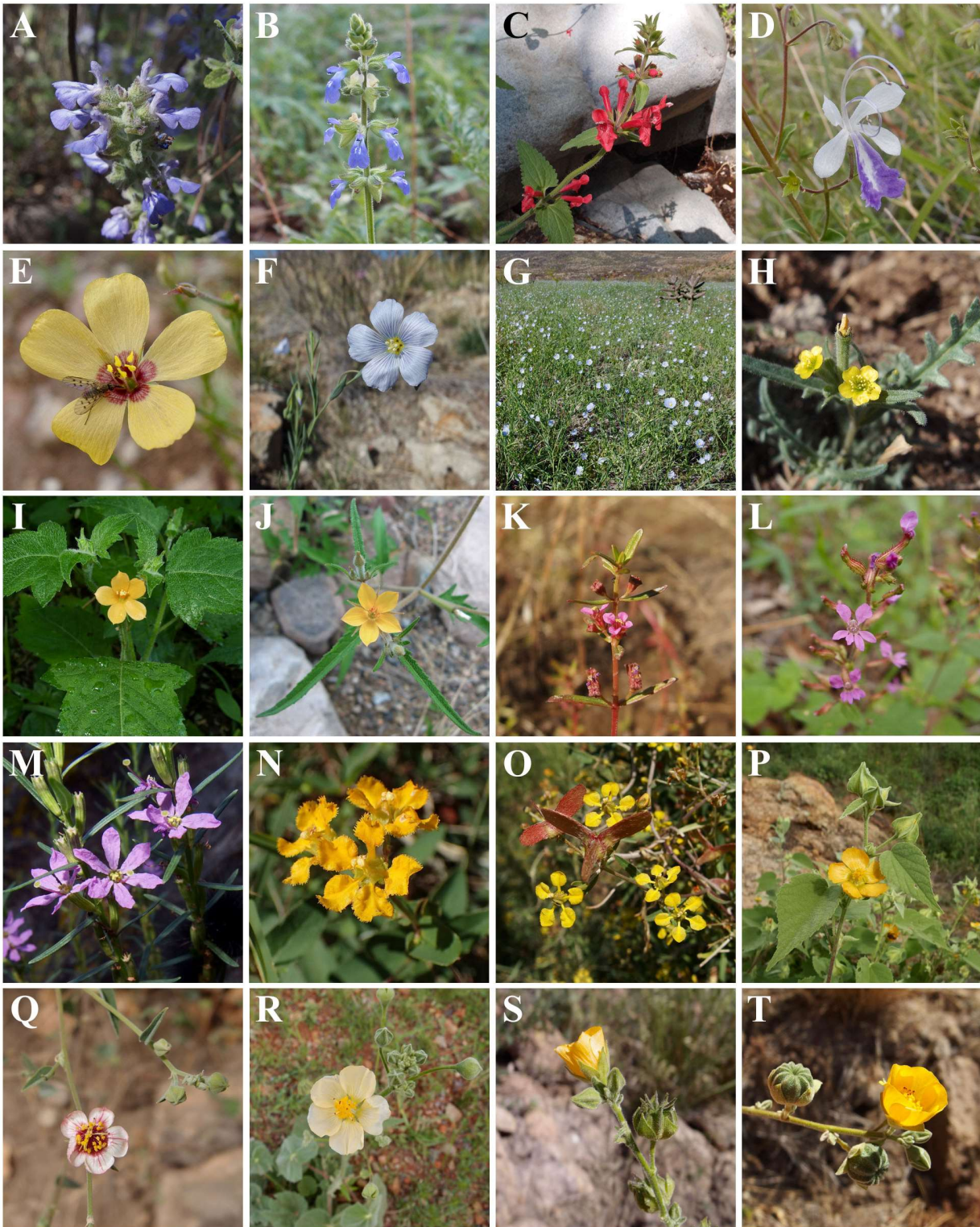


Figure 24. **EUDICOTS cont.** **Lamiaceae:** (A) *Salvia parryi*; (B) *Salvia subincisa*; (C) *Stachys coccinea*; (D) *Trichostema arizonicum*. **Linaceae:** (E) *Linum puberulum*; (F & G) *Linum usitatissimum*. **Loasaceae:** (H) *Mentzelia albicaulis*; (I) *Mentzelia aspera*; (J) *Mentzelia isolata*. **Lythraceae:** (K) *Ammannia auriculata*; (L) *Cuphea wrightii*; (M) *Lythrum californicum*. **Malpighiaceae:** (N) *Aspicarpa hirtella*; (O) *Cottsia gracilis*. **Malvaceae:** (P) *Abutilon abutiloides*; (Q) *Abutilon incanum*; (R) *Abutilon mollicomum*; (S) *Abutilon parishii*; (T) *Abutilon reventum*.



SALERO RANCH IMAGE GALLERY

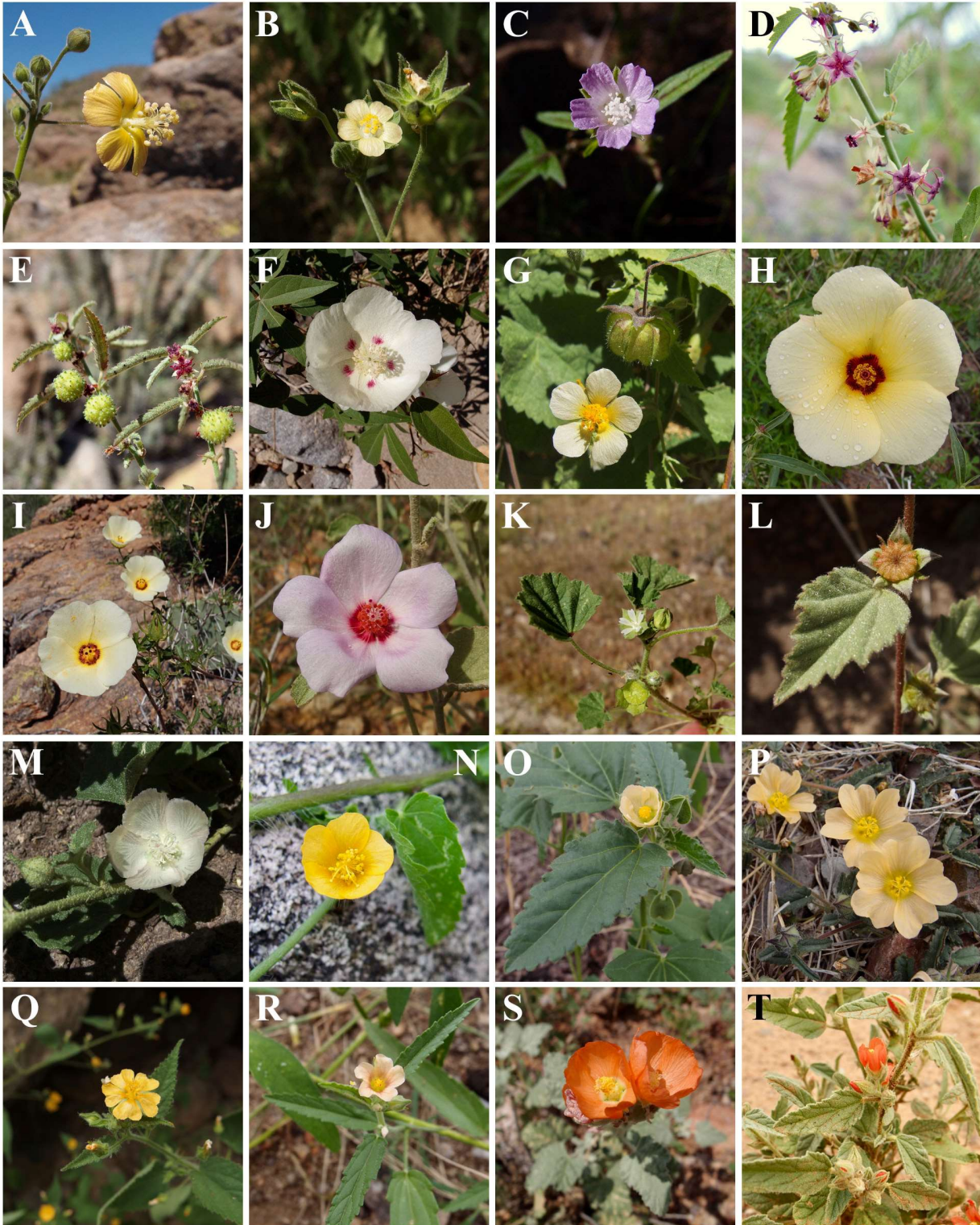


Figure 25. **EUDICOTS cont. Malvaceae:** (A) *Anoda abutiloides*; (B) *Anoda crenatiflora*; (C) *Anoda cristata*; (D & E) *Ayenia filiformis*; (F) *Gossypium thurberi*; (G) *Herissantia crispa*; (H) *Hibiscus biseptus*; (I) *Hibiscus coulteri*; (J) *Hibiscus denudatus*; (K) *Malva parviflora*; (L) *Malvastrum bicuspidatum*; (M) *Malvella leprosa*; (N) *Pseudabutilon thurberi*; (O) *Rhynchosida physocalyx*; (P) *Sida abutilifolia*; (Q) *Sida glabra*; (R) *Sida spinosa*; (S) *Sphaeralcea ambigua*; (T) *Sphaeralcea emoryi*.



SALERO RANCH IMAGE GALLERY



Figure 26. **EUDICOTS cont. Malvaceae:** (A) *Sphaeralcea hastulata*; (B) *Sphaeralcea laxa*; (C) *Waltheria indica*. **Martyniaceae:** (D & E) *Proboscidea parviflora*. **Menispermaceae:** (F) *Cocculus diversifolius*. **Molluginaceae:** (G & H) *Glinus radiatus*; (I) *Mollugo verticillata*. **Montiaceae:** (J) *Calandrinia ciliata*; (K) *Cistanthe monandra*; (L) *Phemeranthus parviflorus*. **Moraceae:** (M) *Morus microphylla*. **Namaceae:** (N) *Nama dichotoma*; (O) *Nama hispida*. **Nyctaginaceae:** (P) *Allionia incarnata*; (Q) *Boerhavia coccinea*; (R) *Boerhavia coulteri*; (S) *Boerhavia erecta*; (T) *Boerhavia megaptera*.



SALERO RANCH IMAGE GALLERY



Figure 27. **EUDICOTS** cont. **Nyctaginaceae**: (A) *Boerhavia wrightii*; (B) *Commicarpus scandens*; (C) *Mirabilis albida*; (D) *Mirabilis linearis*; (E) *Mirabilis longiflora*; (F) *Mirabilis melanotricha*. **Oleaceae**: (G) *Fraxinus gooddingii*; (H & I) *Fraxinus velutina*. **Onagraceae**: (J) *Epilobium canum* var. *latifolium*; (K) *Eremothera chamaenerioides*; (L) *Eulobus californicus*; (M) *Oenothera caespitosa*; (N) *Oenothera curtiflora*; (O) *Oenothera platanorum*; (P) *Oenothera podocarpa*; (Q) *Oenothera primiveris*; (R) *Oenothera rosea*; (S) *Oenothera suffrutescens*. **Orobanchaceae**: (T) *Brachystigma wrightii*.



SALERO RANCH IMAGE GALLERY



Figure 28. **EUDICOTS cont.** **Orobanchaceae:** (A) *Castilleja minor* var. *minor*; (B) *Castilleja tenuiflora*; (C) *Orobanche cooperi* subsp. *cooperi*. **Oxalidaceae:** (D) *Oxalis corniculata*; (E) *Oxalis latifolia*; (F) *Oxalis stricta*. **Papaveraceae:** (G) *Argemone pleiacantha*; (H) *Corydalis aurea* subsp. *occidentalis*; (I) *Eschscholzia californica* subsp. *mexicana*. **Passifloraceae:** (J) *Passiflora mexicana*. **Petiveriaceae:** (K & L) *Rivina humilis*. **Phrymaceae:** (M) *Erythranthe floribunda*; (N) *Erythranthe guttata*; (O) *Erythranthe rubella*. **Plantaginaceae:** (P) *Maurandella antirrhiniflora*; (Q) *Mecardonia procumbens*; (R) *Nuttallanthus texanus*; (S) *Penstemon barbatus*; (T) *Penstemon parryi*.



SALERO RANCH IMAGE GALLERY



Figure 29. **EUDICOTS cont. Plantaginaceae:** (A) *Plantago patagonica*; (B) *Plantago virginica*; (C) *Sairocarpus nuttallianus*; (D) *Schistophragma intermedium*; (E) *Stemodia durantifolia*; (F) *Veronica anagallis-aquatica*; (G) *Veronica peregrina*. **Plumbaginaceae:** (H) *Plumbago zeylanica*. **Polemoniaceae:** (I) *Eriastrum diffusum*; (J) *Gilia flavocincta* subsp. *australis*; (K) *Gilia mexicana*; (L) *Ipomopsis thurberi*; (M) *Leptosiphon chrysanthus*; (N) *Linanthus bigelovii*; (O) *Loeselia glandulosa*; (P) *Phlox gracilis*. **Polygalaceae:** (Q) *Hebecarpa barbeyana*; (R) *Hebecarpa obscura*; (S) *Monnina wrightii*; (T) *Polygala alba*.



SALERO RANCH IMAGE GALLERY

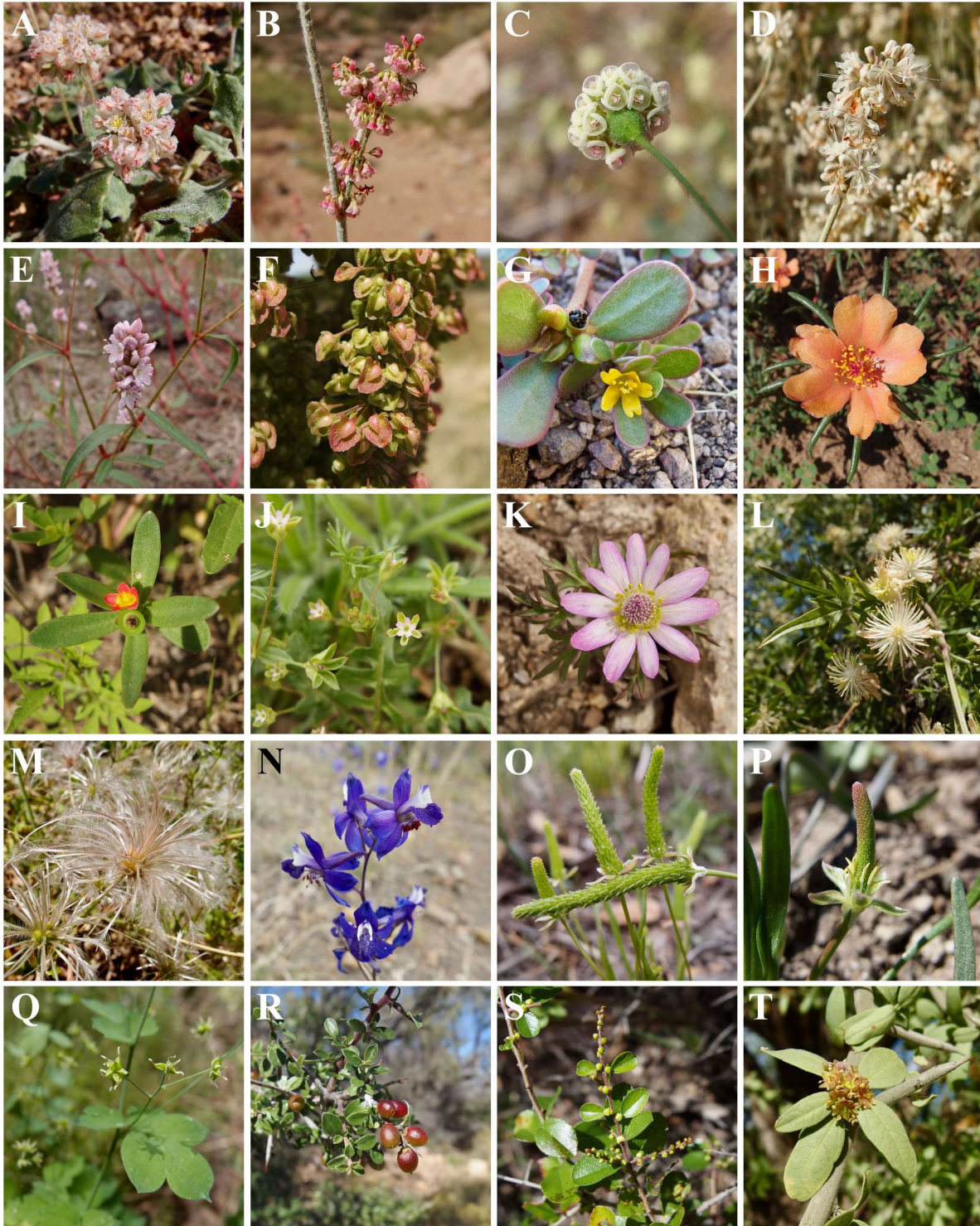


Figure 30. **EUDICOTS cont. Polygonaceae:** (A) *Eriogonum abertianum*; (B) *Eriogonum polycladon*; (C) *Eriogonum thurberi*; (D) *Eriogonum wrightii*; (E) *Persicaria pensylvanica*; (F) *Rumex crispus*. **Portulacaceae:** (G) *Portulaca oleracea*; (H) *Portulaca suffrutescens*; (I) *Portulaca umbraticola*. **Primulaceae:** (J) *Androsace occidentalis*. **Ranunculaceae:** (K) *Anemone tuberosa*; (L & M) *Clematis drummondii*; (N) *Delphinium scaposum*; (O) *Myosurus cupulatus*; (P) *Myosurus minimus*; (Q) *Thalictrum fendleri*. **Rhamnaceae:** (R) *Condalia correllii*; (S) *Sageretia wrightii*; (T) *Sarcophalus obtusifolius*.



SALERO RANCH IMAGE GALLERY



Figure 31. **EUDICOTS cont. Rosaceae:** (A) *Cercocarpus breviflorus*. **Rubiaceae:** (B) *Bouvardia ternifolia*; (C) *Diodia teres*; (D) *Galium aparine*; (E) *Galium microphyllum*; (F) *Galium proliferum*; (G) *Galium wrightii*; (H & I) *Hedyotis vegrandis*; (J) *Mitracarpus hirtus*; (K) *Stenotis greenei*. **Rutaceae:** (L) *Ptelea trifoliata*. **Salicaceae:** (M) *Populus fremontii*; (N) *Salix bonplandiana*; (O) *Salix exigua*; (P) *Salix gooddingii*; (Q) *Salix taxifolia*. **Sapindaceae:** (R) *Dodonaea viscosa*; (S & T) *Sapindus saponaria*.



SALERO RANCH IMAGE GALLERY



Figure 32. **EUDICOTS cont. Saxifragaceae:** (A) *Heuchera sanguinea*. **Scrophulariaceae:** (B) *Limosella acaulis*. **Solanaceae:** (C) *Calibrachoa parviflora*; (D) *Chamaesaracha coronopus*; (E & F) *Datura quercifolia*; (G & H) *Datura wrightii*; (I) *Lycium andersonii*; (J & K) *Lycium berlandieri*; (L & M) *Lycium exsertum*; (N) *Nicotiana obtusifolia*; (O) *Physalis acutifolia*; (P) *Physalis hederifolia*; (Q & R) *Physalis pubescens*; (S) *Physalis solanacea*; (T) *Solanum adscendens*.



SALERO RANCH IMAGE GALLERY

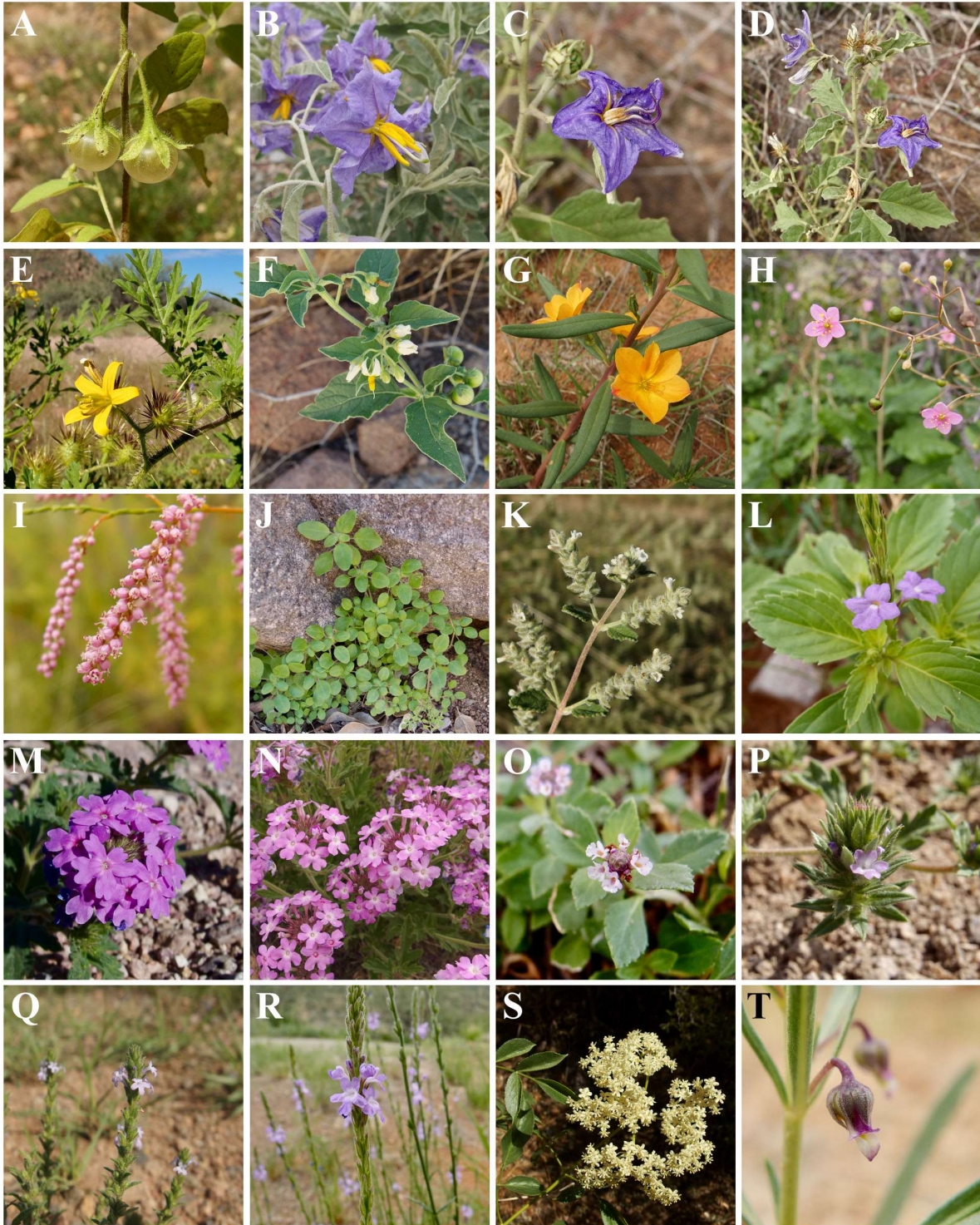


Figure 33. **EUDICOTS cont. Solanaceae:** (A) *Solanum adscendens*; (B) *Solanum elaeagnifolium*; (C & D) *Solanum houstonii*; (E) *Solanum lumholtzianum*; (F) *Solanum nigrescens*. **Talinaceae:** (G) *Talinum aurantiacum*; (H) *Talinum paniculatum*. **Tamaricaceae:** (I) *Tamarix chinensis*. **Urticaceae:** (J) *Parietaria pensylvanica*. **Verbenaceae:** (K) *Aloysia wrightii*; (L) *Bouchea prismatica*; (M) *Glandularia gooddingii*; (N) *Glandularia latilobata*; (O) *Phyla nodiflora*; (P) *Verbena bracteata*; (Q) *Verbena gracilis*; (R) *Verbena xylopoda*. **Viburnaceae:** (S) *Sambucus cerulea*. **Violaceae:** (T) *Hybanthus verticillatus*.



SALERO RANCH IMAGE GALLERY



Figure 34. **EUDICOTS** cont. **Viscaceae**: (A) *Phoradendron californicum*; (B) *Phoradendron capitellatum*; (C) *Phoradendron leucarpum*. **Vitaceae**: (D) *Cissus trifoliata*; (E) *Vitis arizonica*. **Zygophyllaceae**: (F) *Kallstroemia californica*; (G) *Kallstroemia grandiflora*; (H) *Kallstroemia parviflora*; (I) *Larrea tridentata*; (J) *Tribulus terrestris*. **MONOCOTS**. **Amaryllidaceae**: (K) *Allium rhizomatum*; (L) *Habranthus longifolius*; (M) *Nothoscordum bivalve*. **Araceae**: (N) *Lemna gibba*. **Asparagaceae**: (O & P) *Agave palmeri*; (Q & R) *Agave schottii* var. *schottii*; (S & T) *Dasylirion wheeleri*.



SALERO RANCH IMAGE GALLERY

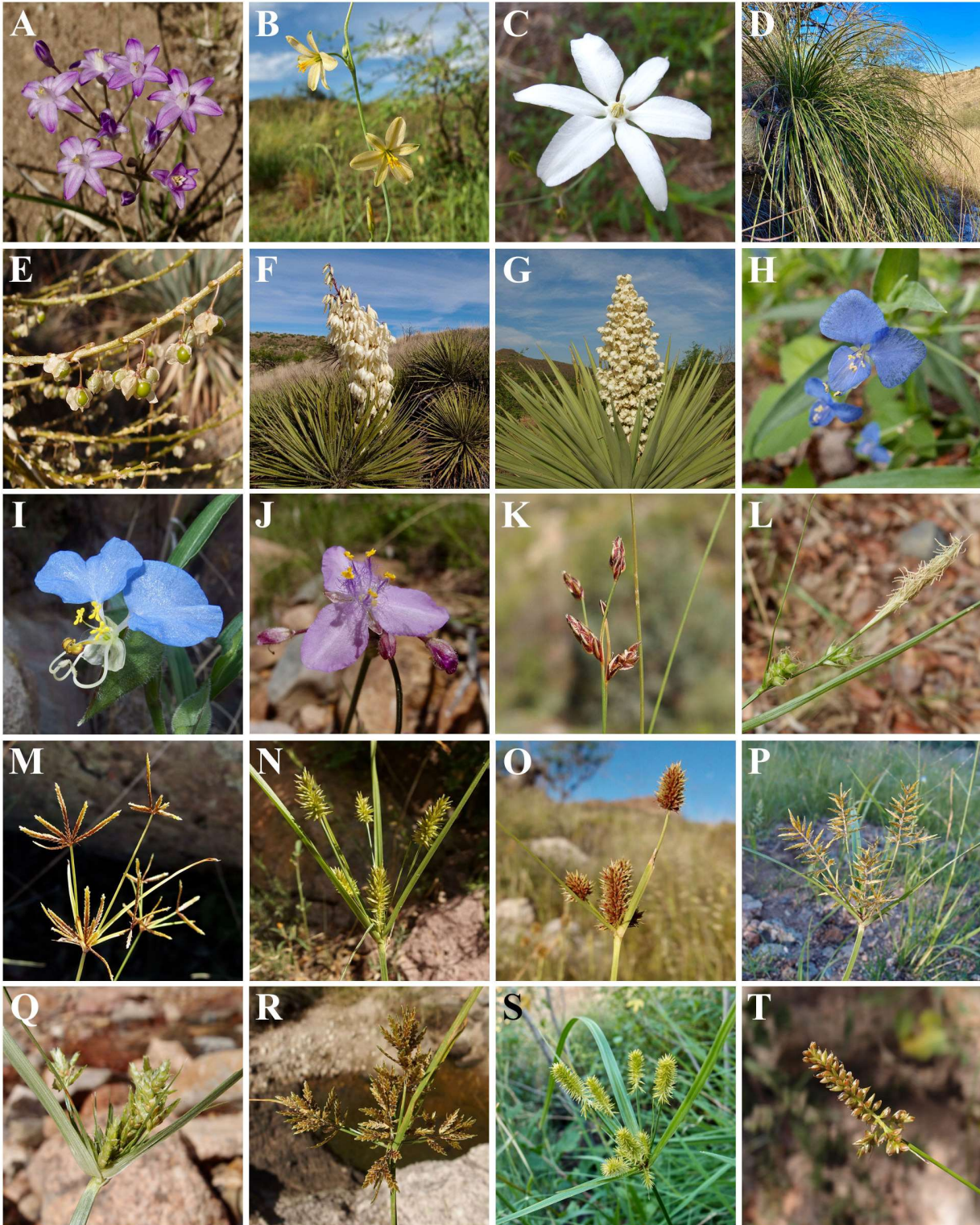


Figure 35. **MONOCOTS cont.** **Asparagaceae:** (A) *Dipterostemon capitatus* subsp. *pauciflorus*; (B) *Echeandia flavescens*; (C) *Milla biflora*; (D & E) *Nolina microcarpa*; (F) *Yucca baccata* var. *brevifolia*; (G) *Yucca* cf. *schottii*. **Commelinaceae:** (H) *Commelina dianthifolia*; (I) *Commelina erecta*; (J) *Tradescantia pinetorum*. **Cyperaceae:** (K) *Bulbostylis capillaris*; (L) *Carex leucodonta*; (M) *Cyperus amabilis*; (N) *Cyperus dentoniae*; (O) *Cyperus dipsaceus*; (P) *Cyperus esculentus*; (Q) *Cyperus fendlerianus*; (R) *Cyperus flavicomus*; (S) *Cyperus hermaphroditus*; (T) *Cyperus mutisii*.



SALERO RANCH IMAGE GALLERY

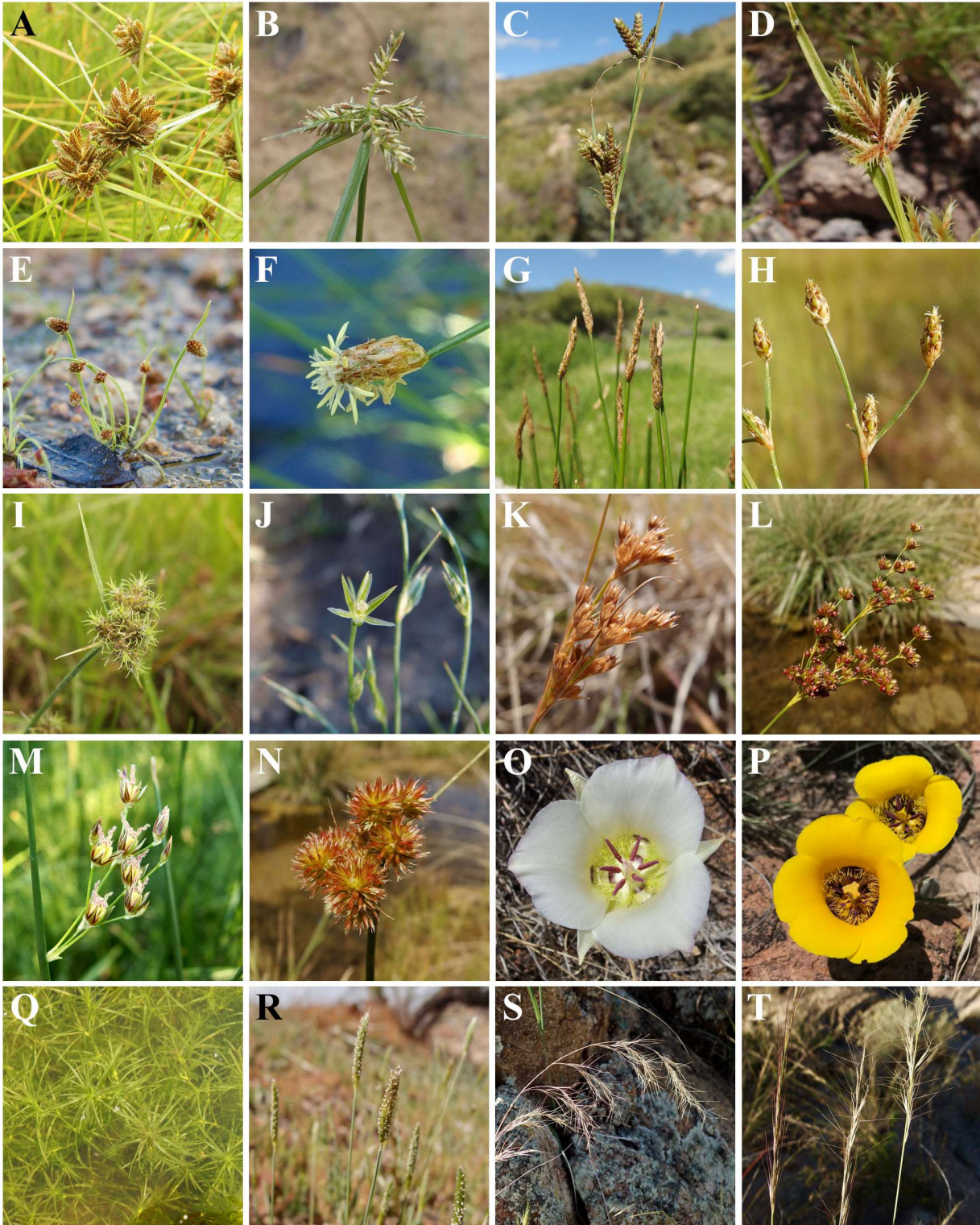


Figure 36. **MONOCOTS cont.** **Cyperaceae:** (A) *Cyperus niger*; (B) *Cyperus pallidicolor*; (C) *Cyperus sphaerolepis*; (D) *Cyperus squarrosus*; (E) *Cyperus subsquarrosus*; (F) *Eleocharis montevidensis*; (G) *Eleocharis palustris*; (H) *Fimbristylis annua*; (I) *Fuirena simplex* var. *aristulata*. **Juncaceae:** (J) *Juncus bufonius*; (K) *Juncus interior*; (L) *Juncus marginatus*; (M) *Juncus mexicanus*; (N) *Juncus torreyi*. **Liliaceae:** (O) *Calochortus ambiguus*; (P) *Calochortus kennedyi*. **Najadaceae:** (Q) *Najas guadalupensis*. **Poaceae:** (R) *Alopecurus carolinianus*; (S) *Aristida adscensionis*; (T) *Aristida purpurea* var. *nealleyi*.



SALERO RANCH IMAGE GALLERY



Figure 37. **MONOCOTS cont. Poaceae:** (A) *Aristida purpurea* var. *purpurea*; (B & C) *Aristida schiedeana* var. *orcuttiana*; (D) *Aristida ternipes* var. *gentilis*; (E) *Aristida ternipes* var. *ternipes*; (F) *Avena fatua*; (G) *Bothriochloa barbinodis*; (H) *Bothriochloa ischaemum*; (I) *Bouteloua aristidoides*; (J) *Bouteloua barbata* var. *barbata*; (K) *Bouteloua barbata* var. *rothrockii*; (L) *Bouteloua chondrosioides*; (M) *Bouteloua curtispendula*; (N & O) *Bouteloua eludens*; (P) *Bouteloua eriopoda*; (Q) *Bouteloua gracilis*; (R) *Bouteloua hirsuta*; (S) *Bouteloua radicata*; (T) *Bouteloua repens*.



SALERO RANCH IMAGE GALLERY

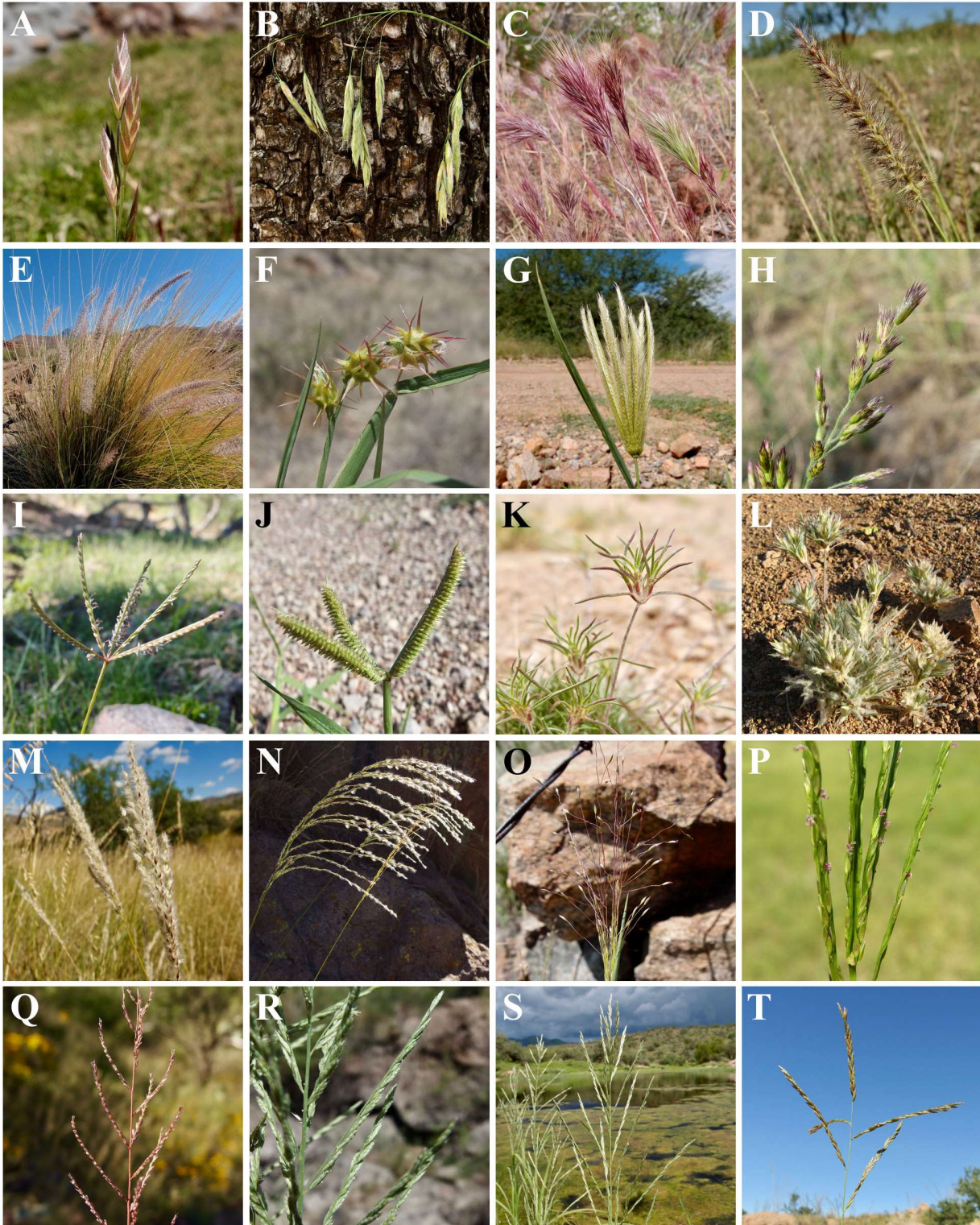


Figure 38. **MONOCOTS cont. Poaceae:** (A) *Bromus catharticus*; (B) *Bromus frondosus*; (C) *Bromus rubens*; (D) *Cenchrus ciliaris*; (E) *Cenchrus setaceus*; (F) *Cenchrus spinifex*; (G) *Chloris virgata*; (H) *Cottea pappophoroides*; (I) *Cynodon dactylon*; (J) *Dactyloctenium aegyptium*; (K & L) *Dasyochloa pulchella*; (M) *Digitaria californica*; (N) *Digitaria insularis*; (O) *Digitaria pubiflora*; (P) *Digitaria sanguinalis*; (Q) *Dinebra panicea*; (R) *Dinebra viscida*; (S) *Diplachne fusca* subsp. *fascicularis*; (T) *Disakisperma dubium*.



SALERO RANCH IMAGE GALLERY



Figure 39. **MONOCOTS cont. Poaceae:** (A) *Echinochloa colona*; (B) *Echinochloa crus-galli*; (C) *Elionurus barbiculmis*; (D) *Elymus elymoides*; (E) *Enneapogon desvauxii*; (F) *Eragrostis barrelieri*; (G) *Eragrostis cilianensis*; (H) *Eragrostis curvula*; (I) *Eragrostis echinochloidea*; (J) *Eragrostis intermedia*; (K) *Eragrostis lehmanniana*; (L) *Eragrostis pectinacea*; (M) *Eragrostis superba*; (N) *Eriochloa acuminata*; (O) *Eriochloa aristata*; (P) *Festuca octoflora*; (Q) *Hackelochloa granularis*; (R) *Heteropogon contortus*; (S) *Heteropogon melanocarpus*; (T) *Hilaria belangeri*.



SALERO RANCH IMAGE GALLERY

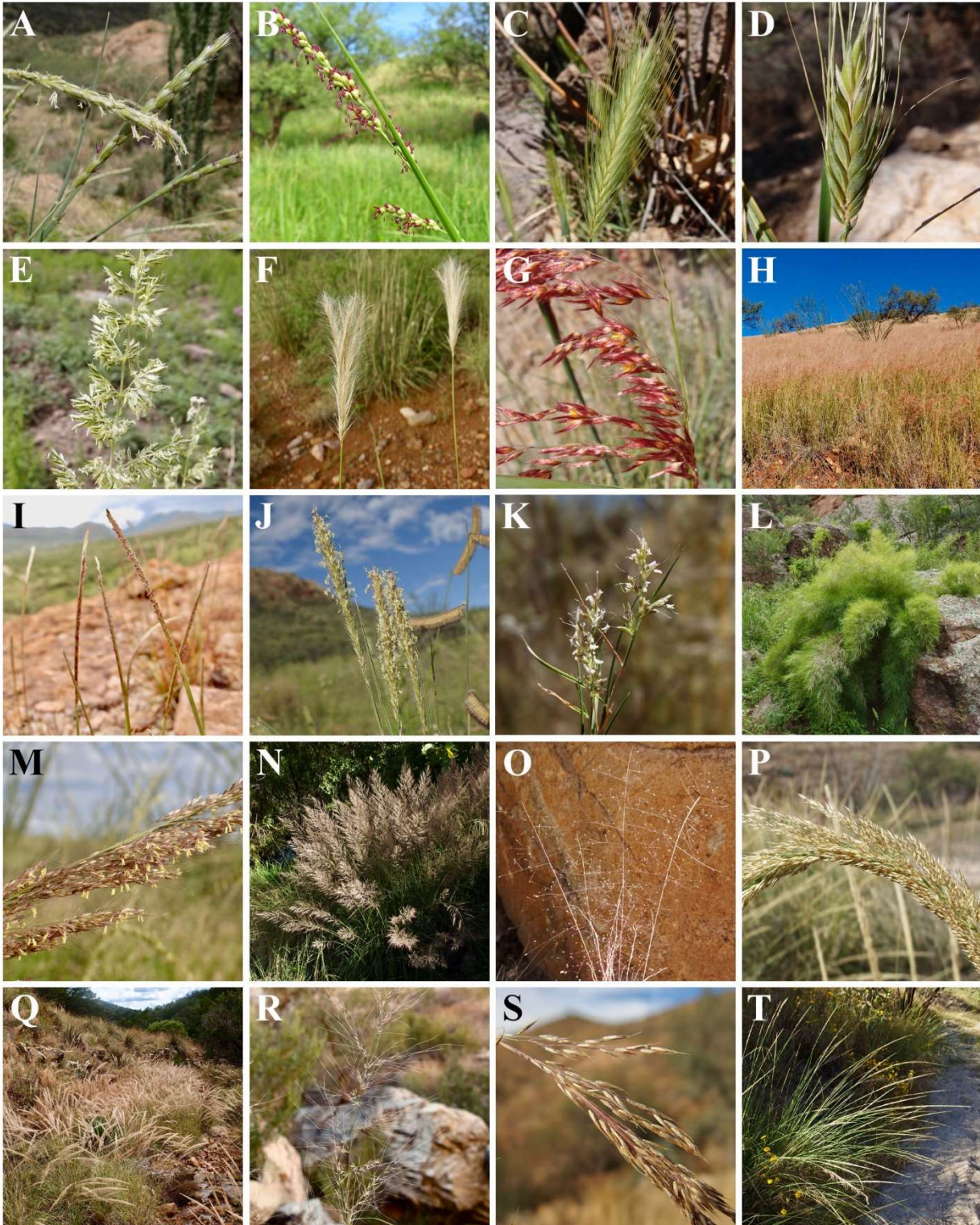


Figure 40. **MONOCOTS cont. Poaceae:** (A) *Hilaria mutica*; (B) *Hopia obtusa*; (C) *Hordeum murinum*; (D) *Hordeum vulgare*; (E) *Koeleria pyramidata* var. *pyramidata*; (F) *Leptochloa crinita*; (G & H) *Melinis repens*; (I) *Microchloa kunthii*; (J) *Muhlenbergia alopecuroides*; (K & L) *Muhlenbergia dumosa*; (M & N) *Muhlenbergia emersleyi*; (O) *Muhlenbergia fragilis*; (P & Q) *Muhlenbergia longiligula*; (R) *Muhlenbergia microsperma*; (S & T) *Muhlenbergia palmeri*.



SALERO RANCH IMAGE GALLERY



Figure 41. **MONOCOTS cont. Poaceae:** (A) *Muhlenbergia repens*; (B & C) *Muhlenbergia rigens*; (D) *Muhlenbergia rigida*; (E & F) *Muhlenbergia sinuosa*; (G) *Muhlenbergia tenuifolia*; (H) *Muhlenbergia texana*; (I) *Muhlenbergia unisetata*; (J) *Panicum antidotale*; (K) *Panicum coloratum*; (L) *Panicum hallii*; (M) *Panicum hirticaule*; (N) *Pappophorum vaginatum*; (O) *Paspalum distichum*; (P) *Phalaris minor*; (Q) *Piptochaetium fimbriatum*; (R) *Poa annua*; (S) *Poa bigelovii*; (T) *Poa fendleriana*.



SALERO RANCH IMAGE GALLERY

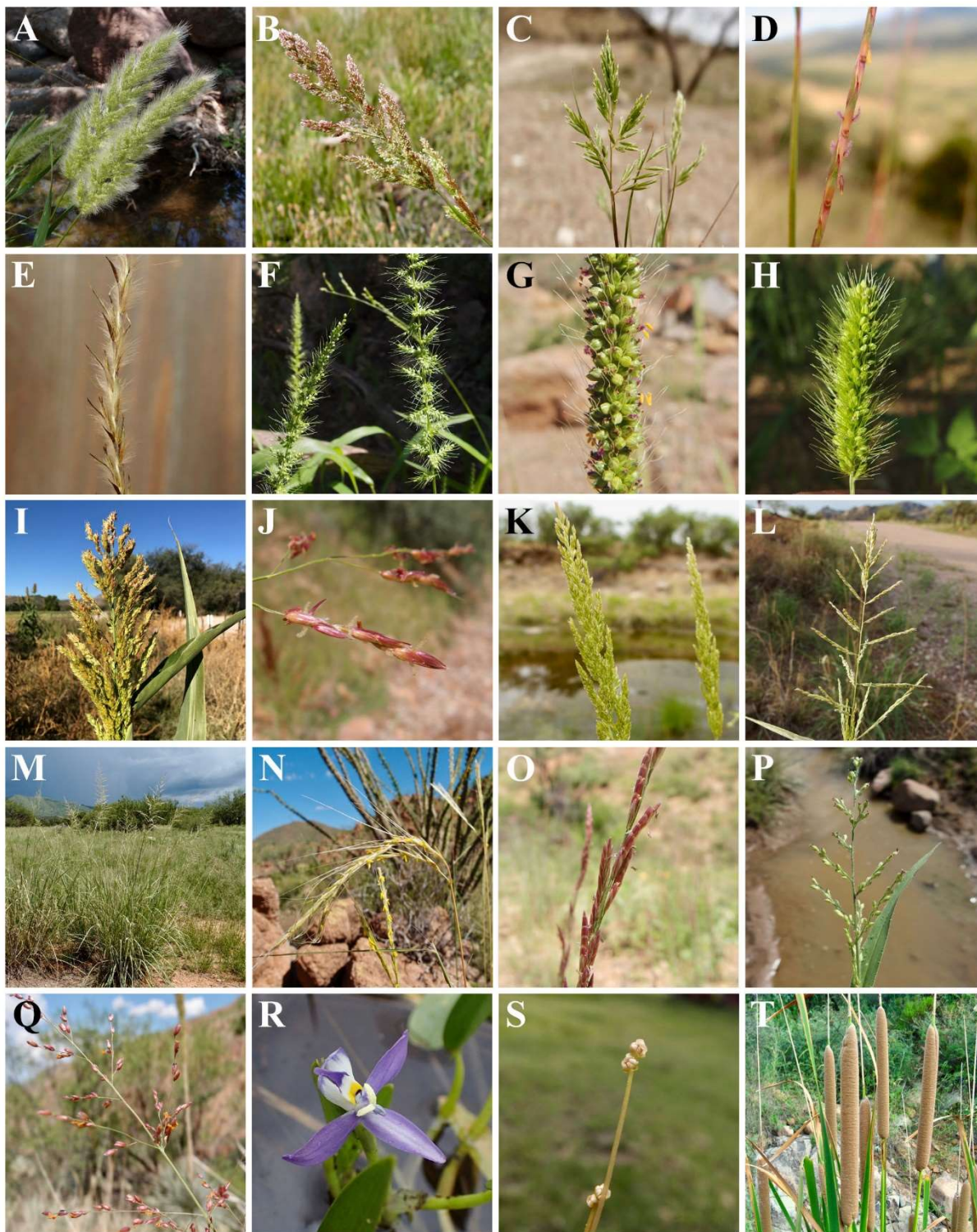


Figure 42. **MONOCOTS cont. Poaceae:** (A) *Polypogon monspeliensis*; (B) *Polypogon viridis*; (C) *Schismus barbatus*; (D) *Schizachyrium cirratum*; (E) *Schizachyrium sanguineum*; (F) *Setaria grisebachii*; (G) *Setaria macrostachya*; (H) *Setaria viridis*; (I) *Sorghum bicolor*; (J) *Sorghum halepense*; (K) *Sphenopholis obtusata*; (L) *Sporobolus cryptandrus*; (M) *Sporobolus wrightii*; (N) *Trachypogon spicatus*; (O) *Tridens muticus*; (P) *Urochloa arizonica*; (Q) *Zuloagaea bulbosa*. **Pontederiaceae:** (R) *Heteranthera limosa*. **Potamogetonaceae:** (S) *Potamogeton pusillus*. **Typhaceae:** (T) *Typha domingensis*.