

## Tachinidae (Insecta, Diptera) of Saitama Prefecture

Shima, Hiroshi  
Kyushu University Museum, Kyushu University

Hara, Katsushi

<https://doi.org/10.15017/1657804>

---

出版情報：九州大学総合研究博物館研究報告. 14, pp.1-36, 2016-03. The Kyushu University Museum  
バージョン：  
権利関係：

# Tachinidae (Insecta, Diptera) of Saitama Prefecture

Hiroshi SHIMA<sup>1)</sup> & Katsushi HARA<sup>2)</sup>

<sup>1)</sup>Kyushu University Museum, Kyushu University, Hakozaki, Fukuoka 812-8581, Japan. E-mail: shimarcb@kyudai.jp

<sup>2)</sup>327-1 Sakurazawa, Yorii-machi, Osato-gun, Saitama 369-1201, Japan.

**Abstract:** A total of 341 species of the Tachinidae (Diptera) are recorded from Saitama Prefecture, central Japan (Honshu). Seventeen species are newly recorded from Japan (*Billaea brevicauda* Zhang & Shima, *B. kolomietzi* (Mesnil), *Istocheta rufipes* (Villeneuve), *Carcelia townsendi* Crosskey, *C. delicatula* Mesnil, *Catagonia aberrans* (Mesnil), *Senometopia longie-pandriuma* (Chao & Liang), *S. mimoexcisa* (Chao & Liang), *Blepharipa tibialis* (Chao), *Onychogonia flaviceps* (Zetterstedt), *Pales peregrina* Herting, *Cylindromyia arator* Reinhard, *Hemyda hertingi* Ziegler & Shima, *Perigymnosoma globulum* Villeneuve, *Panzeria vagans* (Meigen), *Glaurocara lucidula* Richter, and *Peleteria sphyricera* (Macquaert)) and five genera each with an undetermined species are newly known from Japan (*Admontia*, *Ligeria*, *Medinodexia*, *Hapalioloemus*, and *Phytomyptera*). *Exorista (Adenia) tubigera* Mesnil and *Exorista (Spixomyia) lepis* Chao, which were mistakenly omitted in the Catalog of the Insects of Japan (Shima, 2014), are noted.

**Key Word:** Tachinid fauna, Saitama Prefecture, Japanese Tachinidae, parasitoids, systematics.

## 1. Introduction

The Tachinidae are one of the largest families of the Diptera and are known from some 8500 species in the world (O'Hara, 2013: 1). All members of the family develop as endoparasitoids of arthropods, mainly insects, and as such tachinids play an important role in regulating the populations of their host insects. In this respect the tachinid faunas may reflect the faunal richness, as an indicator of the natural environments, of given localities. Tachinids are considered important because of their potential as the biocontrol agents.

The family Tachinidae is recorded from some 500 species in Japan (Shima, 2014), although some more (100 or more?) may be added (or described) in the future. The tachinid fauna has been studied in Saitama Prefecture, Central Japan, since 1970s and some 160 species were recorded by the junior author (Hara, 1978). Since that time more specimens have been accumulated by the junior author with the help of some colleagues.

Here we record 341 tachinid species from Saitama

Prefecture in Honshu based on material donated to the Kyushu University Museum together with material reported by Hara (1978). Seventeen species are newly recorded from Japan. Five genera are also newly recorded from Japan, although the species are not yet determined. The following list includes some undetermined (or undescribed) species and formerly recorded or described species from Saitama by authors, such as Mesnil (1960), Herting (1975), Shima (1981, 1985a, b, etc.), Tachi (2013a, b) and others.

## 2. Material & Methods

Specimens examined are all preserved in the collection of the Kyushu University Museum except holotypes of formerly described species housed in the Biosystematics Laboratory, Kyushu University (BLKU) and the holotype of *Exorista cantans* Mesnil housed in the Canadian National Insect Collection (CNC).

Species are arranged in the alphabetical order by the

subfamilies and tribes. The classification of the subfamilies and tribes mainly follows Shima (2014).

Each species is recorded by sex, localities (villeges (small local names) or mountains followed by counties (towns) or cities), dates and collectors; data are arranged in the alphabetical order of county (town) or city names; collectors' names are abbreviated as follows: CT (C. Tamaki), HM (H. Mitsui), IM (I. Makibayashi), KT (K. Toyoda), MA (M. Arai), MH (M. Hasegawa), MU (M. Uchida), SU (S. Uchida), TH (T. Hayashi), TN (T. Nambu), and YY (Y. Yamaguchi). If the collector's

name is not given then the collector was the junior author, K. Hara. An asterisk (\*) indicates a species previously reported in Hara (1978). Usually a species reported from more than 10 specimens is listed only by number of the specimens (or sexes) and the localities. Previously recorded species are indicated only by the author (year) and their localities. Species and genera (when species not determined) newly recorded from Japan are indicated with "New to Japan" in **bold** following the species names.

### 3. List of the species

#### Subfamily DEXIINAE アシナガヤドリバエ亜科

##### Tribe Campylochetini

1. *Campylocheta argenticeps* Shima  
2♂, Mt. Jômine, Kamiizumi, 12.v.2004.
2. *Campylocheta bisetosa* Shima  
1♂, Mt. Sengen, Ogawa, 6.iv.1993.
3. *Campylocheta dentifera* Richter  
= *Campylocheta* sp. 2 (Hara, 1978).  
Shima (1985b: 108): 2♂, Mitsumine.
4. *Campylocheta flaviceps* Shima (Fig. 1)  
1♀, Yotsuyama Shrine, Ogawa, 26.iv.1993; 1♂, Yotsuyama, Ogawa, 7.iv.1995; 1♀, Mt. Ôhira, Ranzan, 6.iv.1996; 6♂, Tôyama, Ranzan, 1.iv.2000, KT. Shima (1985b: 112): 1♀ paratype, Ôyagi, Moroyama.
5. *Campylocheta grisea* Shima  
1♂, Jûniten, Kodama, 3.iv.1990; 3♂, Yotsuyama, Ogawa, 27.iii.1993, 12.iii.1995; 1♂, Mt. Ôhira, Ranzan, 7.iii.1996, TN.
6. *Campylocheta hirticeps* Shima  
1♂, Kiroko, Ogawa, 1.iv.1999, MU; 1♂, Hirono, Ranzan, 10.iii.2001.
7. *Campylocheta umbrinervis* Mesnil  
= *Campylocheta* sp. 1 (Hara, 1978).  
1♂, Kôya, Ogawa, 5.v.1991; 1♂, Mt. Kanetsukidô, Yorii, 8.iv.2002; 1♀, Mure, Yorii, 17.v.2001. Shima (1985b: 119): 1♂, Ogano.
8. *Elfriedella amoena* Mesnil  
1♀, Irikawa, Ôtaki, 16.vi.1985.

**Tribe Dexiini**9. *Billaea brevicauda* Zhang & Shima **New to Japan**

1♂, Hosokubodani, Chichibu, 24.vii.1977, TN; 1♀, Mt. Kanetsukidô, Yorii, 12.viii.1979.

*Note.* Zhang et al. (2015) did not include the above specimens in their revision. The specimens appear to belong to this species.

10. *Billaea kolomietzi* (Mesnil) **New to Japan**

1♀, Shiga, Ranzan, 8.vi.2002.

*Note.* Although females of *Billaea* species are difficult to determine to species, we believe the above specimen is a female of this species.

11. *Billaea morosa* Mesnil

1♀, Irikawa, Ôtaki, 7.vii.1985.

12. *Dinera takanoi* (Mesnil)

15♂1♀, Shiroishi, Arakawa, 20.v.1979; 3♂, Hitsujiyama, Chichibu, 14.v.1981; 1♀, Irikawa, Ôtaki, 24.v.1987.

13. *Estheria magna* (Baranov) キバネナガハリバエ

1♀, Irikawa, Ôtaki, 25.viii.1985.

14. \**Prosenia siberita* (Fabricius) クチナガハリバエ

1♀, Mt. Misuzu, Minano, 26.viii.2002; 1♂, Kamifurudera, Ogawa, 11.viii.1992; 1♀, Kibe, Ogawa, 21.viii.1993.

**Tribe Doleschallini**15. \**Torocca munda* (Walker) コンボウナガハリバエ

1♀, Hirogawara, Chichibu, 31.vii.1979.

**Tribe Voriini**16. \**Athrycia curvinervis* (Zetterstedt) キオビケプトハリバエ

1♀, Summit, 1300 m, Mt. Bukô, Chichibu, 24.vii.1978; 1♂, Irikawa, Ôtaki, 16.v.1985.

17. \**Athrycia trepida* (Meigen)

1♂, Kurao, Ogano, 5.v.1988; 1♀, Mt. Sengen, Ogawa, 15.v.1993; 1♀, Kasayama Pass, Ogawa, 22.v.1999; 1♂, Koshigoe, Ogawa, 4.v.1993.

18. *Dexiomimops rufipes* Baranov (Fig. 2)

1♀, Mt. Jômine, Kamiizumi, 25.vii.1994; 1♂1♀, Irikawa, Ôtaki, 4.viii.1980, 25.vii.1995. Shima (1987b: 88): Ochigawa, Ryôkami.

19. *Halydaia aurea* Egger

1♀, Oegawa, Kônan, 12.x.1993; 1♀, Furusato, Ranzan, 13.x.1997.

20. *Hyleorus elatus* (Meigen) キンケムシヤドリバエ

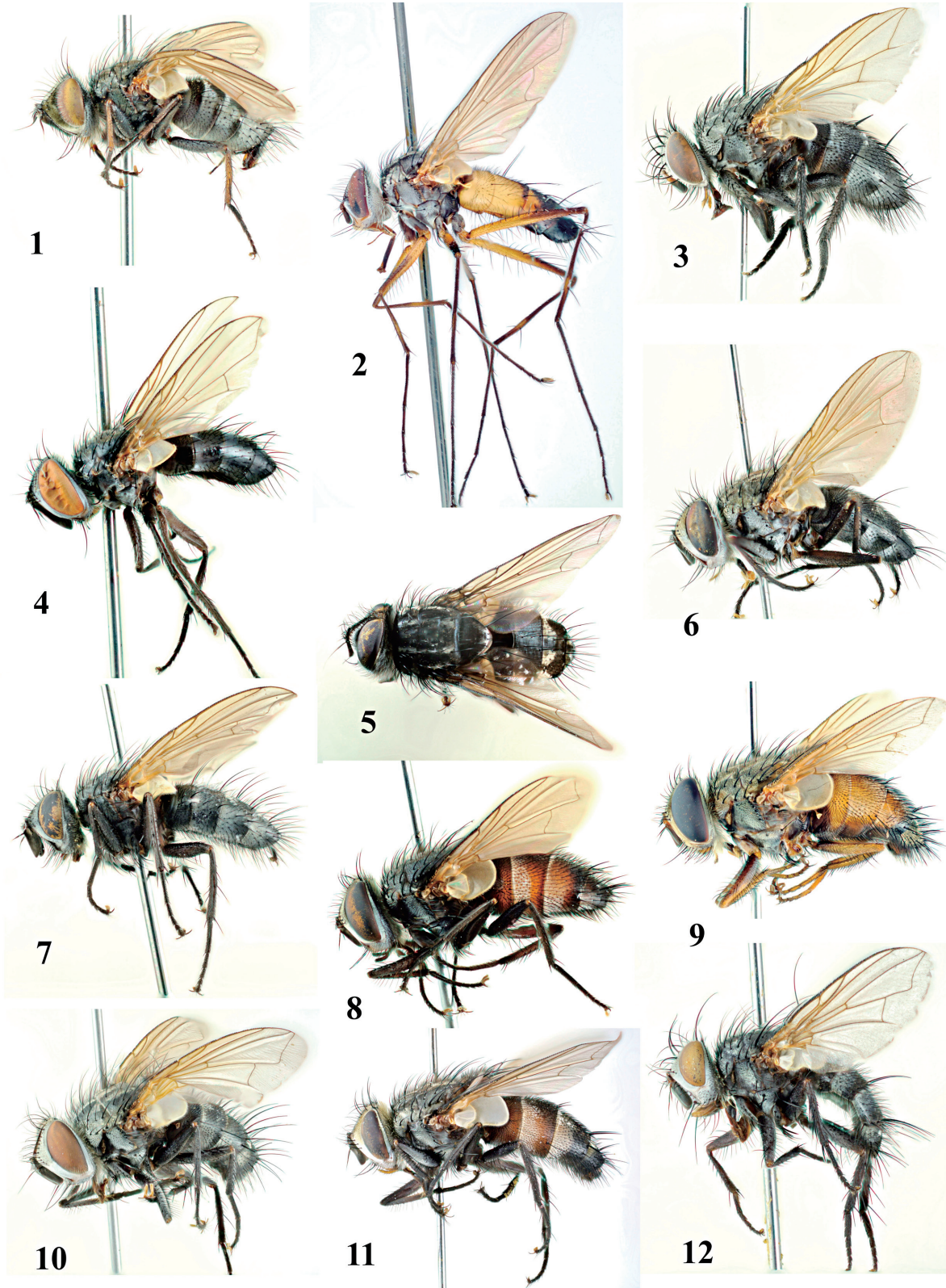
2♂, Sugiyama, Ranzan, 20.vi.1996, TN.

21. *Hyleorus takanoi* (Mesnil) (Fig. 3)

1♀, Mt. Jinmi, Kodama, 29.x.2003; 1♀, Mitsumoto, Kônan, 23.ix.1993.

22. *Periscepsia (Ramonda) spatulata* (Fallén)

1♂, Kiyotaki — Hacchô, Ryôkami, 26.vii.1975.



Figs. 1–24, Habitus of tachinids from Saitama. 1: *Campylocheta flaviceps* Shima, male (Yotsuyama, Ogawa), 2: *Dexiomimops rufipes* Baranov, male (Ryokami), 3: *Hyleorus takanoi* Mesnil, female (Mt. Jinmi, Kodama), 4: *Leiophora nudicosta* (Mesnil), male (Mt. Bukô, Chichibu), 5: *Meigenia velutina* Mesnil, male (Mt. Futago, Ogano), 6: *Compsiluroides flavipalpis* Mesnil, male (Irikawa, Ôtaki), 7: *Oswaldia strigosa* Shima, male (Mure, Yorii), 8: *Catagonia aberrans* Mesnil, male (Mt. Sengen, Ogawa), 9: *Euvespivora decipiens* (Walker), male (Shimoasami, Kodama), 10: *Prooppia latipalpis* (Shima), male (Yotsuyama, Ogawa), 11: *Exorista cantans* Mesnil, male (Minano), 12: *Ctenophorinia christianae* Ziegler & Shima, female (Mt. Ôhira, Ranzan).

23. *Phyllomya aristalis* (Mesnil & Shima)  
1♂1♀, Iwai, Minano, 20.v.1980, 24.v.1980, CT; 1♀, Mt. Ôhira, Ranzan, 1.v.1999.
24. *Phyllomya humilis* Shima  
1♂, Arima Dam, Naguri, 13.v.1981; 1♀, Irikawa, Ôtaki, 1.vi.1985.
25. *Phyllomya japonica* Shima  
= *Phyllomya* sp. (Hara, 1978).  
1♀, Mikuni Pass, 1800 m, Ôtaki, 12.viii.1994. Shima (1988: 15): 2♂ paratypes, Karisaka Pass, Mt. Kumotori.
26. \**Phyllomya nobilis* Mesnil  
1♀, Ôfuchi, Minano, 14.v.1974; 1♀, Nagatoro, 28.x.1972; 2♂. Tajimagahara, Urawa, 21.v, 28.v.1977; 1♀, Obusuma, Yorii, 10.v.1977.
27. \**Phyllomya takanoi* Mesnil  
1♀, Yanagi-ôhashi, Chichibu, 17.vi.1984; 4♂1♀, Arakawa-ôhashi, Kumagaya, 27.v.1984; 1♂, Aoyama, Ogawa, 25.v.1999; 1♀, Shimozato, Ogawa, 30.v.1997; 1♂, Yukie, Ogawa, 14.x.1993; 1♀, Gongendô Bank, Satte, 5.xi.1997.
28. *Thelaira leucozona* (Panzer)  
3♀, Kamagata, Ranzan, 11.xi.2000; 1♀, Mt. Ôhira, Ranzan, 20.xi.1999; 2♀, Shôgunsawa, Ranzan, 7.x, 24.x.2000.
29. \**Thelaira nigripes* (Fabricius) アシナガハリバエ  
31 exs.: Arakawa (Kawauradani); Chichibu (Urayama); Hidaka (Yokote); Iwatsuki (Ôto-dairokutenjin); Kamiizumi (Akubara, Mt. Jômine); Kitamoto (Takao); Kônan (Sendai); Kurao (Ikebara); Minano (Nihongi Pass); Ogano (Mt. Futago); Ôtaki (Mt. Sanpô); Ranzan (Furusato, Tarômaru); Ryôkami (Yakushidô); Yoshida (Onagata).
30. \**Voria ruralis* (Fallén) ウスグロケブトハリバエ  
23 exs.: Kamiizumi (Akubara); Kodama (Iikura, Inazawa); Kônan (Sendai); Kumagaya (Ôaso); Ogano (Kurao); Ogawa (Yukie, Kiroko, Kuriyama, Nômasu, Mt. Sengen); Ôtaki (Irikawa, Mikuni Pass); Ranzan (Hirasawa, Kamagata, Sekiguchi, Shiga, Mt. Ôhira); Sayama (Horinouchi).

### Subfamily EXORISTINAE ヤドリバエ亜科

#### Tribe Blondeliini

31. *Admontia* sp. **Genus New to Japan**  
1♀, Mikashima, Tokorozawa, 20.ix.1989, HM.  
*Note:* This species resembles *Admontia zimini* Richter, but needs confirmation. The same species has been collected at some localities in Hokkaido, Honshu and Kyushu.
32. *Biomeigenia gynandromima* Mesnil  
1♀, Koshinone, Ogano, 23.v.1992, TN.
33. \**Blondelia nigripes* (Fallén) ヨトウクロヤドリバエ  
1♂, Mt. Jômine, Kamiizumi, 25.vii.1994; 1♀, Irikawa, Ôtaki, 18.viii.1983; 2♀, Mikuni Pass, 1800 m, Ôtaki, 12.viii.1994; 1♀, Sakurazawa, Yorii, 4.x.2000.
34. *Blondelia siamensis* (Baranov)  
= *Blondelia* sp. (Hara, 1978).  
1♂, Ishidojuku, Kitamoto, 15.v.1985; 1♂, Mt. Futago, Ogano, 8.viii.2000; 1♂, Mt. Sengen, Ogawa, 26.viii.1999; 1♂, Irikawa, Ôtaki, 7.vii.1985; 1♀, Tochimoto, Ôtaki, 2.vii.2001; 2♀, Oppata, Ranzan, 25.ix.2000; 1♂, Shiga, Ranzan, 19.ix.2001; 1♀, Mt.

- Ôhira, Ranzan, 20.viii.1997; 2♂, Mure, Yorii, 16.viii.2001, TN. Shima (1984: 544): 1♂3♀ paratypes of *B. breviceps* Shima (= *B. siamensis*), Chichibu, Tokorozawa, Yoshimi.
35. \**Compsilura concinnata* (Meigen) ノコギリハリバエ  
62 exs.: Chichibu (Hirogawara); Kamiizumi (Akubara, Mt. Jômine, Yano); Kodama (Jûniten Lake); Kônan (Sendai, Itai); Ogano (Kurao); Ogawa (Kibe, Kiroko, Mt. Kasa, Nômasu, Mt. Sengen, Shimofurudera); Ôtaki (Irikawa, Kawamata, Takigawa, Takinosawa); Ranzan (Shiga, Tarômaru); Satte (Gongendô Bank, Takasugaike); Yorii (Mt. Kamafuse, Mt. Kanetsukidô); Yoshida (Mt. Jômine); Yoshikawa (Ôba River).
36. \**Compsiluroides flavipalpis* Mesnil (Fig. 6)  
2♂, Irikawa, Ôtaki, 16.vi, 25.viii.1985; 1♂, Mt. Jômine, Kamiizumi, 28.vii.1995.
37. *Drinomyia hokkaidensis* (Baranov) キアシハリバエ  
6♂9♀: Ogano (Moriyado); Ogawa (Kasahara, Mt. Kasa, Nishifurusato, Mt. Sengen, Yotsuyama); Ranzan (Senjudô, Mt. Ôhira, Tôyama); Yorii (Gonotsubo, Mure). Shima (1980b: 263, as *D. bicoloripes* (Mesnil)), Minano, Ogano, Yorii.
38. *Istocheta rufipes* (Villeneuve) **New to Japan**  
1♂, Mt. Jômine, Kamiizumi, 24.vii.1995, TN.  
*Note.* There appear to be slight differences between the above specimen and the original description of *I. rufipes*, but they are considered as individual variation.
39. *Leiophora nudicosta* (Mesnil) (Fig. 4)  
1♀, Kawauratani, Arakawa, 17.vi.1984; 1♂, Summit, 1300 m, Mt. Bukô, Chichibu, 22.vii.1978; 1♀, Irikawa, Ôtaki, 25.viii.1985; 1♂, Takinosawa, Ôtaki, 1.viii.1992, TN; 2♀, Mt. Ôhira, Ranzan, 7.vii.1999.
40. *Ligeria* sp. **Genus New to Japan**  
1♂, Mikashima, Tokorozawa, 2.vii.1983, IM.  
*Note.* The above specimen closely resembles the European species *Ligeria angusticornis* (Loew), but at present we cannot be certain that it is the same species.
41. *Lixophaga latigena* Shima  
= *Lixophaga* sp. (Hara, 1978).  
15♀: Kodama (Inasawa); Okabe (Kushihiki); Ôtaki (Tochimoto); Ranzan (Fuefuki Pass, Shiga, Tôyama); Yorii (Mt. Kanetsukidô).
42. *Medina abdominalis* Mesnil  
1♂, Tochimoto, Ôtaki, 19.vii.2000; 1♂, Mt. Happu, Minano, 14.vi.1980; 1♂, Mt. Kasa, Ogawa, 26.vii.1994; 1♂, Nishifurusato, Ogawa, 21.v.1998; 1♂, Shiga, Ranzan, 12.vi.1989; 1♀, Mt. Jômine, Yorii, 3.vii.2001.
43. *Medina collaris* (Fallén) ヒメクロナガハリバエ  
1♂, Mt. Ômochi, Yokose, 25.vii.1977; 1♀, Koshinone, Ogano, 23.v.1992, TN.
44. \**Medina separata* (Meigen)  
1♂, Mt. Bukô, 1300 m, Chichibu, 22.vii.1978; 1♂, Jûniten, Kodama, 4.v.1991; 1♂, Mt. Ôhira, Ranzan, 30.vi.1990; 1♂, Mt. Hachiman, Yorii, 6.v.1979; 2♂1♀, Mt. Kanetsukidô, Yorii, 28.vi.1991, 1.viii.2000.
45. *Medinodexia* sp. **Genus New to Japan**  
1♂, Kurao, Yakyû Pass, Ogano, 14.viii.1989.  
*Note.* This species does not match well any described species of this genus. Although this genus has not been recorded from Japan, we know of at least two species occurring in Japan.
46. *Meigenia dorsalis* (Meigen)  
2♂, Hirakata, Ageo, 2.xi.1985; 1♂, Irikawa, Ôtaki, 18.viii.1983.
47. *Meigenia velutina* Mesnil (Fig. 5)

- 2♀, Mt. Jômine, Kamiizumi, 23.viii.1993, 19.viii.1998; 7♂5♀, Mt. Futago, Ogano, 8.viii, 27.ix.2000, 11.x.2002.
48. *Meigenia* sp.  
1♀, Kuna, Chichibu, 16.vi.1984; 1♀, Mt. Jômine, Kamiizumi, 24.viii.1994.
49. *Oswaldia gilva* Shima  
= *Oswaldia* sp. (Hara, 1978).  
1♂, Jûniten, Kodama, 21.vii.1991; 1♂, Shiga, Ranzan, 24.vi.1900. Shima (1991: 77): 1♂1♀ paratypes, Yokose, Moroyama.
50. \**Oswaldia hirsuta* Mesnil  
26 exs.: Chichibu (Urayama); Kamiizumi (Mt. Jômine); Kodama (Jûniten); Kura (Ikebara); Minano (Mt. Misuzu); Ogawa (Kasahara, Mt. Kasa, Mt. Dôtaira, Mt. Sengen); Ôtaki (Gandoba — Tsundashi Pass, Irikawa, Ôgamata, Takinosawa, Tochimoto); Yorii (Kamafuse Pass); Yoshida (Mt. Jômine).
51. \**Oswaldia issikii* (Baranov)  
= *Oswaldia micronychia* Mesnil (Hara, 1978).  
1♀, Mt. Happu, Minano, 14.v.2004; 1♀, Mt. Futago, Ogano, 8.viii.2000; 1♀, Mt. Kasa, Ogawa, 12.vi.1983; 1♀, Kuriyama, Ogawa, 13.viii.1993, TN; 1♂, Gandoba — Tsundashi Pass, Ôtaki, 28.vii.1983, TN.
52. *Oswaldia muscaria* (Fallén)  
1♀, Mure, Yorii, 17.iv.2001, TN; 3♂, Mt. Kanetsukidô, Yorii, 8.iv.2002. Shima, (1991: 75): 3♂, Minano, Ogano.
53. *Oswaldia strigosa* Shima (Fig. 7)  
1♂, Mure, Yorii, 17.iv.2001.  
*Note.* This species is recorded from Shikoku and Kyushu, but is not known from Honshu.
54. *Prodegeeria japonica* (Mesnil)  
2♀, Urayama, Chichibu, 31.vii.1979, 1.viii.1979; 1♂, Mt. Jinmi, Kodama, 7.vii.1989; 1♂, Irikawa, Ôtaki, 18.viii.1983.
55. *Trigonospila ludia* (Zetterstedt)  
24♂: Chichibu (Urayama); Kamiizumi (Mt. Jômine); Kodama (Mt. Jinmi); Ogawa (Mt. Kasa, Mt. Sengen); Ogano (Mt. Futago, Kura); Ôtaki (Tochimoto); Yorii (Gonotsubo).
56. \**Trigonospila transvittata* (Pandellé) シロオビハリバエ  
1♂, Mt. Futago, Ogano, 11.x.2002; 1♂, Yotsuyama, Ogawa, 8.vi.1998; 2♂, Mt. Ôhira, Ranzan, 30.vi, 12.x.2000; 1♂, Mt. Kanetsukidô, Yorii, 28.vi.2001; 3♀, Mure, Yorii, 16.vii.2001, TN.
57. *Trigonospila vittigera* (Coquillett)  
1♂, Kanasana Shrine, Kamikawa, 15.vi.1986; 1♀, Shiga, Ranzan, 15.vi.1999; 1♀, Shôgunzawa, Ranzan, 9.xi.1991, MU.
58. *Uromedina atrata* (Townsend)  
= *Uromedina* sp. (Hara, 1978).  
1♂, Hidaka, 11.x.1989; 1♂, Tochimoto, Ôtaki, 19.vii.2000; 3♂, Shiga, Ranzan, 17.vi.1998; 1♂, Shôgunsawa, Ranzan, 28.v.1998; 1♂, Gonotsubo, Yorii, 1.x.1978, TN. Shima (1985a: 103): 6♂, Kamikawa, Minano, Ogano, Yorii.
59. \**Vibrissina turrita* (Meigen)  
1♀, Mt. Jômine, Kamiizumi, 28.vii.1995; 1♀, Kashiwagi-numa, Ranzan, 25.x.1998; 1♀, Gongendô Bank, Satte, 1.vi.1998.

#### Tribe Eryciini

60. \**Aplomya confinis* (Fallén) サンセイハリバエ  
54 exs.: Iwatsuki (Ôto-dairokutenjin); Kamiizumi (Akubara, Mt. Jômine); Kodama (Mt. Jinmi, Jûniten); Kônan (Sendai, Oshikiri); Kumagaya (Ôaso); Ogawa (Nômasu, Mt. Sengen, Simofurudera, Yotsuyama); Ranzan (Furusato, Mt. Kanetsukidô,



Sugaya, Mt. Ôhira); Satte (Gongendô Bank, Toshima, Nagama, Nishisekiyado, Takasuganuma); Toda (Dôman); Yorii (Mt. Hachiman, Mt. Kanetsukidô).

61. *Aplomya metallica* (Wiedemann)  
 1♀, Ishidojuku, Kitamoto, 3.xi.1990; 1♀, Inasawa, Kodama, 12.ix.1990; 1♂, Oshikiri, Kônan, 24.viii.1993; 2♂, Hirasawa, Ranzan, 8.ix.2001; 1♂, Kashiwaginuma, Ranzan, 24.x.2000; 2♂, Oppata, Ranzan, 14.x.2000; 1♀, Mt. Ôhira, Ranzan, 9.x.1989; 1♀, Sugaya, Ranzan, 27.xi.1997; 2♂, Furusato, Ranzan, 8.xi.1997.
62. *Bactromyia aurulenta* (Meigen) クロコヤドリバエ  
 1♀, Mt. Kanetsukidô, Yorii, 18.v.2001.
63. *\*Carcelia (Calocarcelia) takanoi* (Mesnil)  
 Hara (1978: 172): 1♀, Minano.  
*Note.* This species is described as *Calocarcelia takanoi*, and later placed under the subgenus *Calocarcelia* of the genus *Carcelia*. The senior author considers that the subgeneric classification of this species needs to be reconsidered.
64. *Carcelia (Calocarcelia) yakushimana* (Shima)  
 1♂, Onagata, Yoshida, 26.viii.1988, TN.
65. *Carcelia (Calocarcelia) sp.*  
 1♀, Furusato, Ranzan, 13.x.1997.  
*Note.* This species closely resembles *Carcelia hirsuta* Baranov, but differs from it in the structure of the male terminalia. It is an undescribed species. Shima (1968) misidentified this species as *Calocarcelia hirsuta*.
66. *Carcelia (Carcelia) caudata* Baranov  
 = *Carcelia* sp. 2 (Hara, 1978).  
 1♀, Hinata-ôya, Ryôkami, 30.viii.1973.  
*Note.* This species is characterized in the female terminalia by the mid ventral portion of the 7th sternite strongly keeled.
67. *\*Carcelia (Carcelia) gnava* (Meigen) ハイイロハリバエ  
 = *Carcelia* (s. str.) *excavata* (Zetterstedt) (Hara, 1978).  
 1♂, Irikawa, Ôtaki, 28.v.1985.
68. *Carcelia (Carcelia) kowarzi* Villeneuve  
 = *Carcelia* (s. str.) *laxifrons* Herting *sensu* Hara (1978), misidentification.  
 1♀, Mt. Jômine, Kamiizumi, 24.viii.1994; 1♀, Kamiakuto, Kamikawa, 15.vi.1986; 1♂, Kuriyama, Ogawa, 4.v.1993; 2♀, Takami, Ogawa, 1.v.1998; 1♂, Yotsuyama, Ogawa, 24.v.1998; 1♂, Sekiguchi, Ranzan, 20.viii.1997.
69. *\*Carcelia (Carcelia) lucorum* (Meigen)  
 1♀, Jûniten, Kodama, 28.x.1992; 1♀, Nômasu, Ogawa, 30.x.1992; 1♀, Mt. Sengen, Ogawa, 15.v.1993; 1♀, Senjudô, Ranzan, 11.xi.2000.
70. *Carcelia (Carcelia) matsukarehae* (Shima)  
 2♀, Kumai, Hatoyama, 4.viii.1977, TN; 6♂, Takasugaike, Satte, 29.vii.1996.
71. *Carcelia (Carcelia) puberula* Mesnil  
 1♀, Koshigoe, Ogawa, 3.v.1993; 1♀, Onagata, Yoshida, 30.iv.1990, TN.
72. *\*Carcelia (Carcelia) rasa* (Macquart)  
 = *Carcelia* (s. str.) *amphion* Robineau-Desvoidy (Hara, 1978).  
 35 exs.: Kamiizumi (Mt. Jômine); Kodama (Mt. Jinmi, Jûniten); Ogawa (Mt. Kasa, Mt. Sengen, Yotsuyama Shrine); Ôtaki (Irikawa); Yorii (Mt. Kanetsukidô).
73. *Carcelia (Carcelia) rasella* Baranov

1♂, Fûpu, Yorii, 29.v.1971.

74. \**Carcelia (Carcelia) sumatrana* Townsend

= *Carcelia* (s. str.) *bombylans* Robineau-Desvoidy *sensu* Hara (1978), in part, misidentification.

1♂, Jûniten, Kodama, 4.v.1989; 1♀, Itai, Kônan, 9.xii.1993; 1♂, Mt. Futago, Ogano, 27.iv.2000; 1♂, Kibe, Ogawa, 30.iii.1993; 1♀, Jikôji, Tokigawa, 6.v.1973; 1♀, Iwasaki, Yorii, 21.iv.1985; 2♂, Kamafuse, Yorii, 12.vii.1981, TN.

75. *Carcelia (Carcelia) townsendi* Crosskey **New to Japan**

1♂, Mt. Kanetukidô, Yorii, 8.iv.2002.

*Note.* This species was described from Sumatera, Indonesia, as *Senexorista sumatrana* Townsend, but was later given the new name *townsendi* by Crosskey (1976) due to the original name being a secondary junior homonym of *C. sumatrana* Townsend, 1927. This species appears to be widely distributed in Southeast Asia, and is newly recorded from Japan. The senior author considers that subgeneric classification of this species needs to be reconsidered.

76. *Carcelia (Carcelia)* sp. 1

= *Carcelia* (s. str.) *bombylans* Robineau-Desvoidy *sensu* Hara (1978), in part, misidentification.

3♀, Urayama, Chichibu, 9.vii.1979; 1♂, Yanô, Kamiizumi, 9.x.1993; 1♀, Oshikiri, Kônan, 24.viii.1993; 1♀, Ikebara, Kurao, 24.vi.1989, MA; 1♀, Nômasu, Ogawa, 30.x.1992; 1♀, Shimosato, Ogawa, 23.vi.1994.

*Note.* This species is very similar to *C. bombylans* but has recently been considered as different by the senior author.

77. *Carcelia (Carcelia)* sp. 2

1♂, Yamane, Hidaka, 5.viii.1989, TN.

*Note.* This species appears to be close to *C. sumatrensis* (Townsend) from Sumatera, Indonesia, in having a characteristic brownish nap of dense microtomentum on the male 5th abdominal tergite. However, it differs from *C. sumatrensis* in the structure of the male terminalia and is probably undescribed.

78. *Carcelia (Euryclea) delicatula* Mesnil **New to Japan**

= *Carcelia (Euryclea) tibialis* (Robineau-Desvoidy) *sensu* Hara (1978), in part, misidentification.

1♂, Kanasana Shrine, Kamikawa, 13.vi.1974; 1♂, Ôyagi, Moroyama, 6.ix.1981, CT; 1♀, Koshinone, Ogano, 23.v.1992; 1♀, Wanakurayama, Ôtaki, 2.viii.1985.

*Note.* This species was recorded from India, China and Taiwan by O'Hara et al. (2009). The senior author has also seen specimens from Vietnam and also Japan (Kyushu).

79. *Carcelia (Euryclea) hemimacquartioides* (Baranov) カノコヤドリバエ

= *Carcelia (Euryclea) ceylanica* (Brauer & Bergenstamm) *sensu* Hara (1978), misidentification.

1♂1♀, Ishidojuku, Kitamoto, 12.v.1990, 12.vii.1991, MU; 1♂, Kurohama-numa, Hasuda, 1.viii.1991; 1♂1♀, Mt. Sengen, Ogawa, 1.v.1998, 10.viii.1994; 1♂, Horinouchi, Sayama, 20.vi.1983; 1♀, Niizo, Toda, 19.vi.1986, MH; 1♂, Tajima, Urawa, 21.iv.1999, TN; 1♂, Mt. Kanetsukidô, Yorii, 18.ix.2001.

*Note.* Crosskey (1976) synonymized *Isocarceliopsis hemimacquartioides* Baranov with *Eufischeria ceylanica* Brauer & Bergenstamm, and Hara (1978) followed this treatment. The species are now considered different species and the latter has not been recorded from Japan.

80. \**Carcelia (Euryclea) tibialis* (Robineau-Desvoidy)

20 exs.: Kitamoto (Ishidojuku); Kônan (Sendai, Itai); Minano (Mt. Happu); Ogano (Kurao); Ryokami (Yakushidô); Satte (Gongendô Bank, Nishisekiyado); Ranzan (Oppata, Shiga, Sugayayakata-ato).

81. *Carcelia (Euryclea)* sp.

1♂, Mt. Sengen, Ogawa, 12.vi.1997; 1♂, Fuefuki Pass, Ranzan, 28.v.1998.

*Note.* This species resembles *C. townsendi* Crosskey, but differs from it in the structure of the male terminalia. It is also collected

in Japan (Kyushu), central China (Shaanxi), and South Korea (Cheju Island).

82. \**Carcelina pallidipes* (Uéda)  
 = *Carcelia* (*Carcelina*) *pallidipes* Uéda (Hara, 1978).  
 1♀, Oshikiri, Kōnan, 2.x.1993; 1♀, Ikebara, Kurao, 24.vii.1988; 3♂1♀, Mikashima, Tokorozawa, 19.vii.1990, 20.ix.1989, HM.  
*Note.* The genus *Carcelina* Mesnil has been treated as a subgenus of *Carcelia*, but was recently recognized as a distinct genus (e.g., O'Hara et al., 2009). The species of *Carcelina* are oviparous, producing unembryonated planoconvex eggs. *Carcelia* species are ovolarviparous and incubate their eggs in the female uterus before oviposition.
83. *Catagonia aberrans* (Mesnil) **New to Japan** (Fig. 8)  
 1♂, Mt. Sengen, Ogawa, 10.viii.1994; 1♂, Mikuni Pass, 1800 m, Ôtaki, 12.viii.1994.  
*Note.* Although *Catagonia aberrans* had not been recorded from Japan previously, it has also been collected in Honshu (Nagano, Aichi, Gifu) and Kyushu (Fukuoka, Kumamoto). It is not common in Japan.
84. *Drino* (*Drino*) *lota* (Meigen)  
 1♂1♀, Urayama, Chichibu, 27.vii.1977, 31.vii.1979; 1♂, Ishidojuku, Kitamoto, 14.viii.1990, TN; 1♂, Iwadatami, Nagatoro, 8.v.1978; 2♀, Irikawa, Ôtaki, 1.16.vi.1985; 1♀, Shōgunzawa, Ranzan, 28.v.1998; 1♀, Oppata, Ranzan, 11.vii.1998.
85. *Drino* (*Drino*) sp. 1  
 = *Drino argenteiceps* (Macquart) *sensu* Hara (1978), misidentification.  
 2♂, Heirinji, Niiiza, 2.ix.1973; 2♂, Tajimagahara, Urawa, 2.vi.1974.  
*Note.* This species was probably misidentified in Hara (1978) as *D. argenteiceps*. It has the abdominal hairs coarser and stronger and is considered different from *D. argenteiceps*.
86. *Drino* (*Drino*) sp. 2  
 1♂1♀, Ikebara, Kurao, 30.vii.1989, MA; 1♀, Nishifurusato, Ogawa, 20.viii.1998; 1♀, Tarōmaru, Ranzan, 10.v.1998; 1♂, Takasuganuma, Satte, 29.vii.1996.  
*Note.* This species resembles *Drino argenteiceps*, but differs from it in having the 5th abdominal tergite entirely shining black. It might be a described species from China, but this is not yet confirmed.
87. *Drino* (*Drino*) sp. 3  
 1♂1♀, Ôto-dairokutenjin, Iwatsuki, 24.ix.1989, 1.viii.1991; 1♀, Oshikiri, Kōnan, 20.viii.1993; 1♀, Moriyado, Ogano, 6.viii.1988, TN; 2♀, Dōman, Toda, 22.ix.1985, 25.viii.1986, TN.  
*Note.* This species is characterized by having very large eyes (the gena very narrow) and the lower eye margin well below the level of vibrissal base, as in some species of *Argyrophylax sensu* Crosskey (1963). This is probably an undescribed species.
88. *Drino* (*Drino*) sp. 4  
 1♀, Mase, Kodama, 17.viii.1989; 1♀, Irikawa, Ôtaki, 16.vi.1985.  
*Note.* This species is similar to *Drino densichaeta* Chao & Liang from China, but a positive identification is not possible because only female specimens are available.
89. *Drino* (*Palexorista*) *aurora* Mesnil  
 1♀, Ôyagi, Moroyama, 28.ix.1980, CT.
90. *Drino* (*Palexorista*) *gilva* (Hartig) トウヒハリバエ  
 1♂, Irikawa, Ôtaki, 25.viii.1985.
91. *Drino* (*Palexorista*) *inconspicuides* (Baranov)  
 = *Palexorista* sp. (Hara, 1978).  
 3♂, Tokigawa, 27.x.1973.
92. \**Drino* (*Zygothria*) *atropivora* (Robineau-Desvoidy) イモムシヤドリバエ

- 1♂, Mt. Jômine, Kamiizumi, 28.vii.1995; 1♂, Mt. Sengen, Ogawa, 11.x.1992; 1♂, Mt. Ôhira, Ranzan, 21.v.2002; 6♂, Mt. Kanetsukidô, Yorii, 1.viii.2000, 28.vi.2001, 2.xi.2001.
93. *Drino (Zygobothria)* sp.  
1♂, Oshikiri, Kônan, 2.x.1993; 1♀, Ôfuchi, Minano, 25.ix.1971; 1♂, Mt. Kanetsukidô, Yorii, 7.x.2000; 1♂, Mt. Jômine, Yoshida, 23.viii.2000.  
*Note.* This species very closely resembles *Drino atropivora*, but differs from it by the longer antenna, ocellar setae close to anterior ocellus and the male terminalia with slightly more rounded cerci in dorsal view and wider surstylus. This species has been collected also in Fukuoka and is probably undescribed.
94. \**Epicampocera succincta* (Meigen) マガタマハリバエ  
1♀, Iwadatami, Nagatoro, 8.v.1978; 1♀, Kurao, Ogano, 5.v.1985; 1♀, Kasahara, Ogawa, 7.v.2004; 1♂1♀, Irikawa, Ôtaki, 28.v.1985, 24.v.1987; 1♀, Mikuni Pass, 1800 m, Ôtaki, 12.viii.1994; 1♂, Mt. Hachiman, Yorii, 6.v.1979.
95. *Euvespivora decipiens* (Walker) (Fig. 9)  
2♂, Shimoasami, Kodama, 10.x.1989.
96. *Isosturmia intermedia* Townsend  
= *Isosturmia inversa* Townsend *sensu* Hara (1978), misidentification.  
1♀, Irikawa, Ôtaki, 25.viii.1985. Shima (1987a: 224): Moroyama, Yorii.  
*Note.* Hara (1978) misidentified this species as *I. inversa*, which does not occur in Japan.
97. \**Isosturmia japonica* (Mesnil)  
2♀, Sendai, Kônan, 31.v.1994; 2♂, Mitsumoto, Kônan, 7.viii.1993; 1♀, Oshikiri, Kônan, 5.viii.1994; 1♂, Mt. Kasa, Ogawa, 16.vi.2000; 1♂, Mt. Kinshô, Ogawa, 6.vi.1993; 1♀, Fuefuki Pass, Ranzan, 28.v.1998; 1♂, Sugiyama, Ranzan, 3.v.1999; 1♂, Tsurugashima, 28.v.1986, TN. Shima (1987a: 221): Chichibu, Urawa.
98. \**Isosturmia picta* (Baranov) ドクガヤドリバエ  
1♂, Yanagi-ôhashi, Chichibu, 17.vi.1984; 1♂, Shimosato, Ogawa, 23.vi.1994. Shima (1987a: 232): Kônan, Ôtaki.
99. *Isosturmia pilosa* Shima  
1♂, Kamiakuto, Kamikawa, 15.vi.1986; 1♀, Mt. Kinshô, Ogawa, 6.vi.1993. Shima (1987a: 227): 1♂ paratype, Yorii.
100. *Lydella thompsoni* Herting. アワノクロハリバエ  
1♂, Ôto, Iwatsuki, 1.viii.1991; 1♂, Ishidojuku, Kitamoto, 25.v.1991; 1♀, Makinoji, Satte, 21.vi.1998; 3♂, Nakajima, Satte, 30.iv.1998, SU; 1♂1♀, Horinouchi, Sayama, 26.vi.1983; 1♀, Mikashima, Tokorozawa, 26.vi.1983, TN; 1♂1♀, Ôbagawa, Yoshikawa, 5.v.1991.
101. *Nilea hortulana* (Meigen) ヒトリヤドリバエ  
1♀, Ôfuchi, Minano, 17.ix.1979; 1♀, Mt. Sengen, Ogawa, 20.ix.1996, TN.
102. *Nilea innoxia* Robineau-Desvoidy  
1♂, Ôfuchi, Minano, 27.v.1974; 1♀, Takami, Ogawa, 1.v.1998; 1♀, Furusato, Ranzan, 25.x.1998; 1♀, Kamagata, Ranzan, 6.x.1997; 1♀, Mikayama, Yorii, 4.vi.1983.
103. *Phebellia flavescens* Shima  
Shima (1981: 58): 1♂ paratype, Ryôkami.
104. *Phebellia glaucoides* Herting  
= *P. grilina* (Rondani) *sensu* Hara (1978), misidentification.  
1♂, Summit, 2017 m, Mt. Kumotori, Ôtaki, 24.vii.1974.  
*Note.* This species is recorded from Honshu for the first time.
105. *Phebellia nigricauda* Mesnil

- 1♀, Urayama, Chichibu, 31.vii.1979.
106. *Phebellia stulta* (Zetterstedt)  
Shima (1982: 61): Minano.
107. *Phebellia* sp. 1  
1♂1♀, Shigedono, Moroyama, 19,31.v.1980, CT; 1♂, Shôgunsawa, Ranzan, 18.v.2001.  
*Note.* The same species has also been collected in Ishikawa Prefecture and does not correspond to any known species.
108. *Phebellia* sp. 2  
1♂, Hashidate River, Chichibu, 4.ix.1977.  
*Note.* This species closely resembles the European species *P. trisetata* (Pandellé), but a positive identification is not possible at this time.
109. \**Phryxe heraclei* (Meigen)  
Hara (1978: 175): Chichibu, Gyôda, Jûmonji, Mitsumine, Yoshida.
110. \**Phryxe nemea* (Meigen)  
1♂, Mt. Futago, Ogano, 27.ix.2000; 1♀, Mt. Kasa, Ogawa, 2.x.1997; 1♀, Mikuni Pass, 1800 m, Ôtaki, 12.viii.1994; 1♀, Shôgen Pass, Ôtaki, 3.viii.1985.
111. \**Phryxe vulgaris* (Fallén) エゾシロヤドリバエ  
1♀, Hôzôji, Hanyû, 22.xi.1989; 1♂, Kawashima, Ranzan, 9.iii.2002; 1♂, Mikashima, Tokorozawa, 26.vi.1983, TN.
112. \**Prooppia latipalpis* (Shima) (Fig. 10)  
= *Phebellia latipalpis* Shima (Hara, 1978).  
1♂, Yotsuyama, Ogawa, 23.v.2000; 1♂2♀, Ogose High School, Ogose, 17.v.3, 17.vi.1981, TN.  
*Note.* *Prooppia* is very similar in appearance to *Phebellia*, but is now considered as a different genus because of its oviparous reproductive habit instead of the ovolarviparous habit of *Phebellia* species.
113. *Prooppia* sp.  
1♀, Kanasana Shrine, Kamikawa, 15.vi.1986; 1♀, Ôfuchi, Minano, 19.x.1973; 1♂, Summit, 1723 m, Mt. Ryôkami, 1.viii.1975.  
*Note.* This species is characterized by having setulae on the posterodorsal margin of the hind coxae. It has also been collected in Iwate Prefecture and is probably an undescribed species.
114. \**Pseudoperichaeta nigrolineata* (Walker) ハマキヤドリバエ  
= *Pseudoperichaeta insidiosa* (Robineau-Desvoidy) (Hara, 1978).  
4♂3♀, Kônosu, 24.ix.1993, TN; 1♀, Takinosawa, Ôtaki, 1.viii.1992, TN.
115. *Senometopia cariniforceps* (Chao & Liang)  
1♂, Nishione, Mt. Bukô, Chichibu, 2.x.1977; 1♂, Ishidojuku, Kitamoto, 25.v.1991; 3♂1♀, Jûniten, Kodama, 10.vi.1972; 1♂, Sendai, Kônan, 31.v.1994; 1♂, Mt. Futago, Ogano, 12.iv.1992; 3♂, Mt. Kanetsukidô, Yorii, 31.x.1971, 28.vi.2001; 1♂, Mt. Hachiman, Yorii, 21.v.1972; 1♂, Hyakketsu, Yoshimi, 13.vi.1972.
116. \**Senometopia excisa* (Fallén) キナコハリバエ  
= *Carcelia (Senometopia) excisa* (Fallén) (Hara, 1978).  
10♂2♀: Chichibu (Urayama); Kamikawa (Kamiakuto); Kônan (Sendai, Oegawa); Ogawa (Mt. Kasa, Kuriyama, Nishifurusato), Ôtaki (Kaminakao).
117. *Senometopia longiepandriuma* (Chao & Liang) **New to Japan**  
1♂, Urayama, Chichibu, 1.viii.1979; 1♂, Kamiizumi, 6.viii.1994; 2♂, Kurao, Ogano, 26.vii.1991; 1♂, Kuriyama, Ogawa, 22.viii.1993; 1♂, Hinataôya, Ryôkami, 22.viii.1987.  
*Note.* This species was described from China and also occurs in Japan in mid summer.

118. *Senometopia mimoexcisa* (Chao & Liang) **New to Japan**

1♂, Ikebara, Kurao, 30.vii.1989, MA; 1♂, Mt. Sengen, Ogawa, 26.viii.1995; 2♂, Onagata, Yoshida, 18,26.viii.1988, TN; 1♂, Mt. Kanetsukidô, Yorii, 14.x.2005; 1♂, Mikayama, Yorii, 24.vii.1993, TN.

119. *Senometopia orientalis* (Shima)

1♂, Irikawa, Ôtaki, 26.vii.1985; 1♂, Mure, Yorii, 16.vii.2001, TN.

120. *Senometopia pilosa* (Baranov)

1♂, Ikebara, Kurao, 1.x.1988, MA; 2♂, Mt. Kasa, Ogawa, 11.ix.1997, 16.vi.2000; 1♂, Mt. Sengen, Ogawa, 13.viii.1993; 1♂, Yotsuyama, Ogawa, 23.vii.1994; 1♂, Mt. Hachiman, Yorii, 6.v.1979.

Note. This beautiful yellow pruinose species resembles *S. excisa*, but may be differentiated by its narrow frons and straight and narrow male cerci.

121. *Senometopia prima* (Baranov) ナカジロハリバエ

= *Carcelia* (*Senometopia*) *kockiana* Townsend *sensu* Hara (1978), misidentification.

9♂10♀: Kodama (Inazawa, Jûniten-ike); Kônan (Oegawa, Shio); Ogawa (Kasahara, Kiroko); Okabe (Hongo); Ranzan (Fuefuki Pass, Oppata, Ôkura, Mt. Ôhira); Satte (Gongendô); Yorii (Mt. Kanetsukidô).

122. *Senometopia rondaniella* (Baranov)

1♂, Jûniten, Kodama, 28.x.1992; 1♀, Yotsuyama Shrine (Ogawa), 3.ix.1997; 1♀, Mt. Kanetsukidô, Yorii, 7.x.2000; 1♀, Mt. Ôhira, Ranzan, 20.viii.1997; 1♀, Furusato, Ranzan, 13.x.1997; 1♀, Mt. Ôhira, Ranzan, 20.viii.1997; 1♀, Furusato, Ranzan, 13.x.1997.

123. *Senometopia separata* (Rondani)

137 exs.: Chichibu (Urayama); Hidaka (Onakage); Kamikawa (Kanasana Shrine); Kitamoto (Ishidojuku); Kônan (Mishoshinden, Nonaka, Oegawa, Shio); Minano (Ôfuchi); Ogano (Kurao); Ogawa (Aoyama, Nishifurusato, Mt. Sengen, Shimo-ogawa, Shimozato, Kôya, Yotsuyama Shrine); Ogose (Ogose High School); Okabe (Imaizumi, Kushihiki); Ôtaki (Takinosawa); Ranzan (Furusato, Hanamidai, Kamagata, Kashiwaginuma, Oppata, Senjudô, Shiga, Shôgunsawa, Sugayayakata-ato, Sugiyama, Mt. Ôhira, Tarômaru, Tôyama); Satte (Nagama, Nishisekiyado); Tsurugashima (Takakura); Yorii (Fûpu, Mt. Hachiman, Mt. Kanetsukidô, Sakurazawa, Obusuma); Yoshida (Onagata).

Note. There are slight differences between the above recorded specimens and European specimens of *S. separata*: dorsal vittae on the scutum are narrower and outer vitta is slightly narrowed and curved inwardly on posterior portion. There remains some doubt as to whether these specimens are correctly identified as *S. separata*. A molecular analysis may be needed to solve this problem.

124. *Senometopia* sp. 1

1♀, Ôasô, Kumagaya, 20.x.2005; 3♂2♀, Tôyama, Ranzan, 13,20.x.2001.

Note. This is one of the smallest *Senometopia* species. It is an undescribed species and has been collected also in the Imperial Palace, Tokyo and Fukuoka, Kyushu. It was misidentified by Shima (2000) as *Senometopia polyvalens* (Villeneuve) (Shima, 2006b).

125. *Senometopia* sp. 2

1♀, Oshikiri, Kônan, 15.ix.1993; 1♀, Kasahara, Ogawa, 5.vii.1994; 1♀, Kashiwaginuma, Ranzan, 15.x.2001; 1♀, Shiga, Ranzan, 16.xi.2001; 1♂, Gongendô Bank, Satte, 5.xi.1997.

Note. This is a rather large *Senometopia* species with distinctly white-banded abdomen and usually with three dorsocentral setae on the postsutural scutum. It is undescribed and found also in Tokyo (Imperial Palace), Osaka, Nara, Fukuoka, the Ryukyus, and in China (Yunnan).

126. *Sisyropa heterusiae* (Coquillett)

24 exs.: Hidaka (Takifudô); Ogawa (Mt. Sengen, Yotsuyama); Ranzan (Mt. Ôhira); Satte (Nishiseki-yado); Yorii (Gonotsubo, Mt. Kanetsukidô).

127. *Sisyropa* sp. 1

1♂, Hinataôya, Ryôkami, 30.viii.1973.

*Note.* This species is characterized by having densely haired eyes, shining black abdominal apex and dense sexual patches (Cerretti et al., 2014) on the male abdominal venter. It has been collected also in Aomori, Iwate, Fukushima, Kobe and Fukuoka. It is similar to *S. thermophila* (Wiedemann), but probably different.

128. *Sisyropa* sp. 2

1♂, Irikawa, Ôtaki, 24.i.1987.

*Note.* This species closely resembles the North American species *S. alypae* Sellers, but has not been confirmed as that species. Possibly the same species has been collected at Mt. Daisetsu, Hokkaido.

129. *Thecocarcelia oculata* (Baranov) トガリハリバエ

= *Thecocarcelia acutangulata* (Macquart) *sensu* Hara (1978), misidentification.

1♂, Kawauradani, Arakawa, 17.vi.1984; 1♀, Itai, Kônan, 15.ix.1993; 2♀, Shio, Kônan, 31.x.1993, 8.xi.1994; 1♀, Kibe, Ogawa, 23.ix.1992; 1♀, Ogose, 9.v.1981, TN; 1♀, Mt. Ôhira, Ranzan, 5.ix.1997.

130. \**Thecocarcelia sumatrana* (Baranov)

= *Thecocarcelia thrix* (Townsend) (Hara, 1978).

1♂, Hosokubotani, Chichibu, 24.vii.1977, TN; 3♂, Urayama, Chichibu, 31.vii.1979; 1♂, Tsundasi, Ôtaki, 31.vii.1975; 1♂, Yoshida, Ranzan, 18.vi.2003, MU.

*Note.* *Thecocarcelia thrix* (Townsend) was established as a junior synonym of *Thecocarcelia sumatrana* (Baranov) by Shima (1998).

131. *Thelyconychia discalis* Mesnil

1♀, Iwadatami, Nagatoro, 8.v.1978.

132. *Weingaertneriella longiseta* (Wulp)

1♀, Ôfuchi, Minano, 17.ix.1977; 1♀, Takakura, Tsurugashima, 23.ix.1987.

**Tribe Ethillini**

133. \**Paratryphera barbatula* (Rondani)

Hara (1978: 171): Ôtaki.

134. \**Paratryphera bisetosa* (Brauer & Bergenstamm)

5♂, Mt. Jômine, Kamiizumi, 19.viii.1995, 3.vii.2001; 1♂, Aoyama, Ogawa, 22.v.1999; 1♂1♀, Mt. Kanetsukidô, Yorii, 18.ix.2001; 1♂, Mt. Jômine, Yoshida, 3.vii.2001.

*Note.* Shima (1980a) confused two species of *Paratryphera* under the name *P. bisetosa* (Tschorsnig, 1985: 77). Two specimens (from Hannô and Nago) treated in Hara (1978: 171) are actually *P. bisetosa*, but two other are a different species (as *Paratryphera* sp. below).

135. *Paratryphera minor* Shima

1♀, Mt. Futago, Ogano, 20.vi.2000.

136. *Paratryphera* sp.

= *Paratryphera bisetosa* (Brauer & Bergenstamm) *sensu* Hara (1978), in part, and Shima (1980), misidentifications.

1♂, Nishifurusato, Ogawa, 20.viii.1998; 1♂, Mt. Sengen, Ogawa, 1.ix.2000; 1♂, Mt. Kanetsukidô, 1.viii.2000. Hara (1978):

Chichibu, Satte.

*Note.* This species is undescribed. The male terminalia (especially the structure of the pregonite and postgonite) are different from those in *P. bisetosa*.

137. \**Phorocerosoma vicarium* (Walker) キンボクハリバエ

20♂17♀: Chichibu (Urayama); Kamiizumi (Mt. Jômine); Kodama (Mt. Jinmi); Ogawa (Kamifurudera, Kasahara, Mt. Kasa, Kasayama, Kuriyama, Nishifurusato, Mt. Sengen); Ogose (Kuroyama); Ôtaki (Irikawa); Ranzan (Mt. Ôhira); Ryôkami (Hinataôya); Satte (Gongendô); Yorii (Mikayama).

#### Tribe Exoristini

138. \**Bessa parallela* (Meigen) ムラタヒゲナガハリバエ

29 exs.: Chichibu (Hirogawara, Mt. Bukô); Iwatsuki (Ôto-dairokutenjin); Kodama (Shimoasami); Kônan (Sakai); Ogano (Kurao); Ogawa (Kuriyama, Nishifurusato, Mt. Sengen); Ôtaki (Irikawa, Takigawa; Takinosawa, Tochimoto); Ranzan (Kamagata, Oppata, Shiga, Mt. Ôhira); Satte (Gongendô Bank); Toda (Myôkenji); Yorii (Mikayama, Nakaomaeda, Sakurazawa).

139. \**Chaetexorista ateripalpis* Shima

1♂, Urayama, Chichibu, 20.vii.1979; 1♀, Inasawa, Kodama, 10.x.1989; 1♀, Mt. Jinmi, Kodama, 28.x.1990; 1♀, Yotsuyama Shrine, Ogaura, 29.vii.1993; 2♂, Oshikiri, Kônan, 25.ix.1993; 1♀, Minoyama, Minano, 2.x.1984; 1♀, Mt. Ôhira, Ranzan, 27.ix.1997; 1♀, Mikayama, Yorii, 27.ix.1996; 2♀, Mt. Jômine, Yoshida, 19.x.2000.

140. *Chaetexorista pavlovskyi* (Stackelberg) イラムシヤドリバエ

= *Chaetexorista eutachinoides* (Baranov) *sensu* Hara (1978), misidentification.

1♂1♀, Arakawa, Yorii, 11.vii.1977 emg., ex *Monema flavescens* Walker, TN; 1♀, Fûpu, Yorii, 4.ix.1977, TN.

*Note.* Richter (2004) determined the identity of *Chaetexorista pavlovskyi* (Stackelberg), which had been described in this genus as *Carcelia*. Shima (2010: 8) followed this placement.

141. *Chaetexorista* sp.

1♀, Oshikiri, Kônan, 5.viii.1994, 20.viii.1993; 1♀, Mt. Ôhira, Ranzan, 24.ix.1997; 2♀, Gongendô, Satte, 12.ix.1996, TN; 1♀, Mt. Kanetsukidô, Yorii, 7.x.2000; 1♂1♀, Gonotsubo, Yorii, 1.x.1978, TN; 1♂1♀, Yorii, 13.vii.1981, ex *Monema flavescens* Walker, TN.

*Note.* This species resembles *C. klapperichi* Mesnil from China, but has not been confirmed as that species.

142. *Ctenophorinia christiana*e Ziegler & Shima (Fig. 12)

= *Ctenophorinia* sp. (Hara, 1978).

1♂, Mt. Jinmi, Kodama, 6.v.1991; 1♀, Mt. Ôhira, Ranzan, 12.v.2001; 1♂, Sugayayakata-ato, Ranzan, 14.iv.2001; 1♂, Mt. Kanetsukidô, Yorii, 8.iv.2002; 1♂, Mikayama, Yorii, 5.v.1987.

143. *Ctenophorinia grisea* Mesnil

2♂, Irikawa, Ôtaki, 23.v.1986.

144. *Exorista (Adenia) cuneata* Herting

= *Exorista rustica* (Fallén) *sensu* Hara (1978), misidentification.

3♂, Arakawa-ôhashi, Kumagaya, 27.v.1984; 1♂1♀, Hirono, Ranzan, 14.v.2003, TN; 1♂, Tenjinjima, Satte, 15.vi.1997. Tachi & Shima (2008): Ogano, Narao, Kamafuse, Yorii.

145. \**Exorista (Adenia) mimula* (Meigen) ナガボソハリバエ

= *Exorista pratensis* (Robineau-Desvoidy) (Hara, 1978).

1♀, Arakawa-ôhashi, Kumagaya, 27.v.1984; 1♂, Kamiakao, Matsubushi, 17.v.2005; 1♀, Irikawa, Ôtaki, 1.vi.1985; 1♀, Yoshida,



Ranzan, 18.vi.2003, MU; 1♂, Takasugaike, Satte, 1.v.2003; 1♀, Tenjinshima, Satte, 15.vi.1997; 1♂, Horinouchi, Sayama, 26.vi.1983; 1♂, Dōman, Toda, 22.ix.1985, TN; 1♂, Toda Park, Toda, 16.vi.1985, TN. Tachi & Shima (2008): Minano, Yoshikawa, Urawa, Yorii.

146. *Exorista (Adenia) tubigera* Mesnil

1♀, Kashiwaginuma, Ranzan, 15.x.2002. Tachi & Shima (2008): Chichibu, Ogawa, Ôtaki.

*Note.* This species was recorded from Japan by Tachi & Shima (2008: 438), but was mistakenly omitted from Catalogue of the Insects of Japan (Shima, 2014).

147. \**Exorista (Exorista) japonica* (Townsend) ブランコヤドリバエ

123 exs.: Chichibu (Hirogawara); Hanyû (Daihakuten); Iwatsuki (Ôto-dairokutenjin); Kamiizumi (Akubara, Mt. Jômine); Kitamoto (Ishidojuku, Miyaoka, Takao); Kōnan (Oshikiri, Sakai, Sendai); Koshigaya (Nakashima); Kumagaya (Ôasô); Ogawa (Nōmasu); Ogose (Kuroyama); Okabe (Imaizumi); Okegawa (Kawataya); Ranzan (Hanami, Kamagata, Kashiwaginuma, Kawashima, Ôkura, Oppata, Shiga, Shōgunsawa, Yoshida); Satte (Chizuka, Gongendô Bank, Kamiuwada, Kami-yoshiba, Kita 3-chome, Matsuishi, Nagama, Nishisekiyado, Shimokawasaki, Sōshinden, Takasuga-ike); Toda (Sasame Shrine, Toda Park); Yashio (Hachiko); Yorii (Mt. Kanetsukidō, Orihara, Sakurazawa); Yoshikawa (Ôba River); Yoshimi (Hasunuma-shinden).

148. \**Exorista (Podotachina) cantans* Mesnil (Fig. 11)

28♂5♀: Kitamoto (Ishidojuku, Takao); Kodama (Shimoasami); Kōnan (Shio); Kumagaya (Arakawa Bank, Ôasô); Ogawa (Yotsuyama); Ogose (Ogose High School); Okabe (Kushihiki); Tsurugashima (Takakura); Ranzan (Oppata, Sugayayakata, Mt. Ôhira); Satte (Nishisekiyado); Yorii (Gonotsubo, Mikayama, Risawa). Mesnil (1960: 574): 1♂ holotype: Hanno (CNC).

149. \**Exorista (Podotachina) sorbillans* (Wiedemann) クワゴヤドリバエ

1♀, Urayama, Chichibu, 30.vii.1979; 1♀, Oshikiri, Kōnan, 15.ix.1993; 1♀, Kamafuse, Yorii, 10.x.1979, TN.

150. *Exorista (Spixomyia) aureifrons* (Baranov)

1♂, Sennyogaikae, Hidaka, 21.vii.1989, TN; 1♂, Yotsuyama, Ogawa, 8.vi.1998.

151. \**Exorista (Spixomyia) bisetosa* Mesnil

1♀, Ishidojuku, Kitamoto, 15.v.1985; 1♀, Takao, Kitamoto, 1.vi.1992, TN; 2♂, Oshikiri, Kōnan, 5.viii.1994; 1♂, Mt. Happu, Minano, 14.vi.1980; 1♂, Sakurazawa, Minano, 10.x.2003; 1♂, Yotsuyama Shrine, Ogawa, 29.vii.1993; 2♀, Kuroyama, Ogose, 27.vii.1981, TN; 1♀, Yoshida, Ranzan, 18.vi.2003, MU; 1♂, Saigusa Shrine, Shitami, 17.viii.1991, TN.

152. \**Exorista (Spixomyia) hyalipennis* (Baranov)

41♂7♀: Kitamoto (Ishido); Kodama (Jūniten); Minano (Mt. Happu); Ogawa (Mt. Kasa, Mt. Kinshō, Mt. Sengen, Yotsuyama); Ogose (Kuroyama); Ôtaki (Green School); Ranzan (Shiga, Mt. Ôhira); Yorii (Mt. Kanetsukidō).

153. *Exorista (Spixomyia) lepis* Chao

1♀, Jūniten, Kodama, 21.vii.1991; 1♂1♀, Ikebara, Kurao, 24.v.1989, MA; 2♂, Mt. Sengen, Ogawa, 2.vi.1994, 27.vi.1998, TN; 1♂, Fuefuki Pass, Ranzan, 28.v.1998; 2♂, Shiga, Ranzan, 17.vi.1998, 12.vi.1999; 1♂1♀, Kamafuse, Yorii, 12.vii.1981, TN.

*Note.* This species was recorded from Japan by Tachi & Shima (2008: 444), but mistakenly omitted from Catalog of the Insects of Japan (Shima, 2014)

154. \**Neophryxe psychidis* Townsend ミノムシヤドリバエ

= *Exorista humilis* Mesnil (Hara, 1978).

5♂5♀: Kodama (Jūniten); Kōnan (Oshikiri); Ogawa (Yotsuyama); Ogose; Ôtaki (Takinosawa); Ryokami (Hinataōya); Satte (Kita 3-chôme); Toda (Toda Park); Yorii (Mt. Kanetsukidō).

155. \**Parasetigena silvestris* (Robineau-Desvoidy) トカチハリバエ

= *Phorocera agilis* Robineau-Desvoidy *sensu* Hara (1978), misidentification.

50♂: Chichibu (Yagai Center); Kamiizumi (Mt. Jômine); Kodama (Mt. Jinmi); Kōnan (Oegawa); Minano (Mt. Happu); Ogano

- (Koshinone); Ogawa (Aoyama, Mt. Kasa, Mt. Sengen, Yotsuyama Shrine); Ranzan (Mt. Ôhira); Satte (Gongendô); Yorii (Mt. Kanetsukidô).
156. *Parasetigena* sp.  
 4♂, Yagai Center, Chichibu, 8.v.1981, TN; 1♀, Oegawa, Kônan, 11.v.1996, TN.  
*Note.* This species resembles *P. takanoi*, but appears to differ in the male terminalia.
157. *Phorinia flava* Tachi & Shima  
 9♂12♀: Kitamoto (Ishidojuku); Kodama (Jûniten); Kônan (Sendai, Oshikiri); Ogano (Kurao); Ogawa (Kibe, Nishifurusato, Mt. Sengen); Satte (Nishisekiyado); Ranzan (Mt. Ôhira); Toda (Dôman); Tsurugashima (Takakura); Urawa (Daiyama); Yorii (Mt. Kanetsukidô). Tachi & Shima (2006: 265): 2♂3♀ paratypes: Arakawa, Ogawa, Ogose, Ôfuchi, Minano, Hanno, Yorii.
158. *Phorinia spinulosa* Tachi & Shima  
 = *Phorinia aurifrons* Robineau-Desvoidy *sensu* Hara (1978), misidentification.  
 8♂2♀: Kodama (Jûniten); Minano (Mt. Happu); Ogawa (Mt. Kasa, Yotsuyama); Otaki (Tochimoto); Ranzan (Mt. Ôhira); Yorii (Mt. Kanetsukidô). Tachi & Shima (2006: 278): 3♂1♀ paratypes: Chichibu, Minano, Moroyama, Tokigawa.
159. \**Phorocera assimilis* (Fallén)  
 1♂, Mt. Kasa, Ogawa, 2.iv.1993; 1♂, Mt. Sengen, Ogawa, 6.iv.1993; 1♂, Takaishi, Ogawa, 5.v.1995; 1♂, Fuefuki Pass, Ranzan, 12.iv.1999; 1♂, Mt. Ôhira, Ranzan, 1.v.1999; 2♂, Mt. Kanetsukidô, Yorii, 11.iv.2001, 16.iv.2004.
160. *Phorocera grandis* (Rondani)  
 1♂, Yagai Center, Chichibu, 8.v.1981; 1♂, Mt. Jinmi, Kodama, 6.v.1991; 1♂, Mt. Happu, Minano, 14.v.2004; 1♂, Aoyama, Ogawa, 8.v.1994, TN; 1♂, Yotsuyama, Ogawa, 23.v.2000; 1♀, Mameyakihashi, Ôtaki, 23.v.1986; 6♂, Mt. Ôhira, Ranzan, 1.v.1999, 16.v.2000, 12.v.2001.
161. \**Phorocera obscura* (Fallén)  
 4♂, Mt. Ôhira, Ranzan, 12.iv.1997, 3.iv.2001.

### Tribe Goniini

162. \**Allophorocera rutilla* (Meigen) キンイロハリバエ  
 = *Erycilla amoena* Mesnil (Hara, 1978).  
 1♂, Mt. Jômine, Kamiizumi, 3.vi.2001.
163. \**Argyrophylax aptus* (Townsend) ウダツハリバエ  
 = *Argyrophylax novella* Mesnil (Hara, 1978).  
 18 exs.: Iwatsuki (Ôto-dairokutenjin); Kônan (Mitsumoto, Nonaka, Shio); Ranzan (Furusato, Oppata, Shiga); Satte (Nishisekiyado, Shiga, Sôsinden, Takasuga).
164. *Blepharella nigra* Mesnil  
 1♂, Hinataôya, Ryôkami, 28.vii.1987.  
*Note.* This species was described from Hokkaido (Inada, Obihiro) and is not known from Honshu.
165. *Blepharella* sp. 1  
 1♂, Kanasana Shrine, Kamikawa, 15.vi.1986.  
*Note.* This is a large species and probably undescribed.
166. *Blepharella* sp. 2  
 1♂, Shimofurudera, Ogawa, 11.viii.1992; 1♀, Irikawa, Ôtaki, 28.vii.1978, TN; 1♀, Irikawadani, Ôtaki, 30.viii.1982; 1♂1♀, Mure, Yorii, 17.v.2001, TN.

*Note* This is probably an undescribed species and is known from several localities in Honshu, Shikoku and Kyushu.

167. *Blepharipa angustifrons* (Mesnil)

1♂, Mt. Jômine, Kamiizumi, 24.viii.1994; 2♂, Inasawa, Kodama, 10.x.1989; 1♂, Mt. Jinmi, Kodama, 7.vii.1989; 1♂, Mase, Kodama, 10.x.1988; 1♂, Mt. Futago, Ogano, 20.vi.2000; 1♂, Mt. Sengen, Ogawa, 12.vi.1997.

168. *Blepharipa carbonata* (Mesnil)

21♂: Kamiizumi (Mt. Jômine); Kodama (Mt. Jinmi, Jûniten); Minano (Mt. Happu); Ogawa (Mt. Sengen, Yotsuyama); Ôtaki (Irikawa, Tochimoto); Ranzan (Mt. Ôhira); Satte (Nishisekiyado); Yoshida (Mt. Jômine).

169. *Blepharipa pauciseta* (Mesnil)

1♂, Mt. Jômine, Kamiizumi, 28.vii.1995; 1♂, Oshikiri, Kônan, 5.viii.1994; 1♂, Irikawa, Ôtaki, 25.viii.1985; 1♂, Nagama, Satte, 29.vii.1996.

170. *Blepharipa sericariae* (Rondani) カイコノウジバエ

1♂, Kanasana Shrine, Kamikawa, 7.v.1972; 1♂, Minoyama, Minano, 1.v.1973; 1♂, Tokiwa, Nagatoro, 1.vi.1999, TN; 1♂, Yukie, Ogawa; 1♂, Yoshida, Ranzan, 11.iv.1991, TN; 1♂, Mt. Ôhira, Ranzan, 12.iv.1997; 2♂, Mt. Kanetsukidô, Yorii, 8.iv.2002, 16.iv.2004; 1♀, Mure, Yorii, 17.iv.2001, TN.

171. *Blepharipa tibialis* (Chao) **New to Japan**

= *Blepharipa schineri* (Mesnil) *sensu* Hara (1978), misidentification.

55♂8♀: Hidaka (Hiwadasan); Kamiizumi (Mt. Jômine); Kitamoto (Ishidojuku); Kodama (Jûniten.); Ogano (Mt. Futago), Ogawa (Aoyama, Kannokurayama, Kôya, Mt. Sengen, Shimosato, Yotsuyama Shrine, Yukie); Ogose; Ôtaki (Irikawa, Takinosawa); Ranzan (Fuefuki Pass, Shiga, Mt. Ôhira); Washinomiya; Yorii (Iwasaki, Mt. Kanetsukidô, Obusuma, Sakurazawa).

*Note.* *Blepharipa schineri* is very close to *B. tibialis* and also to *B. sericariae*. These species may be distinguished by the width of the frons and the pruinose area of the 3rd and 4th abdominal tergites.

172. *Blepharipa* sp. 1

1♂1♀, Hasuda, 1.viii.1991; 1♀, Ishidojuku, Kitamoto, 17.vi.1990, TN; 3♀, Oshikiri, Konan, 20.viii, 15.ix.1993; 3♀, Heirinji, Niiza, 2.ix.1973; 1♀, Sôshinden, Satte, 17.viii.1997; 1♀, Gongendo, Satte, 8.ix.1998, TN; 1♀, Sayama Lake, Tokorozawa, 5.vii.1975; 1♀, Mikayama, Yorii, 25.v.1983.

*Note.* This is a large grayish pruinose species that has a pair of short median marginal setae on the 3rd abdominal tergite. It is probably undescribed.

173. *Blepharipa* sp. 2

2♂3♀, Fukaya, x.1984, ex *Papilio protenor*, TN; 2♂4♀, Yamasaki, Yorii, 10.1983, ex *P. protenor demetrius*, TN; 1♀, Yamasaki, Yorii, 5.viii.1983, ex *Graphium sarpedon*, TN.

*Note.* This is a parasitoid of butterfly larvae of *Papilio* and *Graphium* (Shima, 2006a: 13). It is an undescribed species.

174. *Blepharipa* sp. 3

3♂, Irikawa, Ôtaki, 16.vi.1995.

*Note.* This species resembles *Blepharipa* sp. 5, but has a narrower frons.

175. *Blepharipa* sp. 4

1♂, Nakainazawa, Kodama, 20.viii.1989, TN.

*Note.* This is characterised by having short claws in the male.

176. *Blepharipa* sp. 5

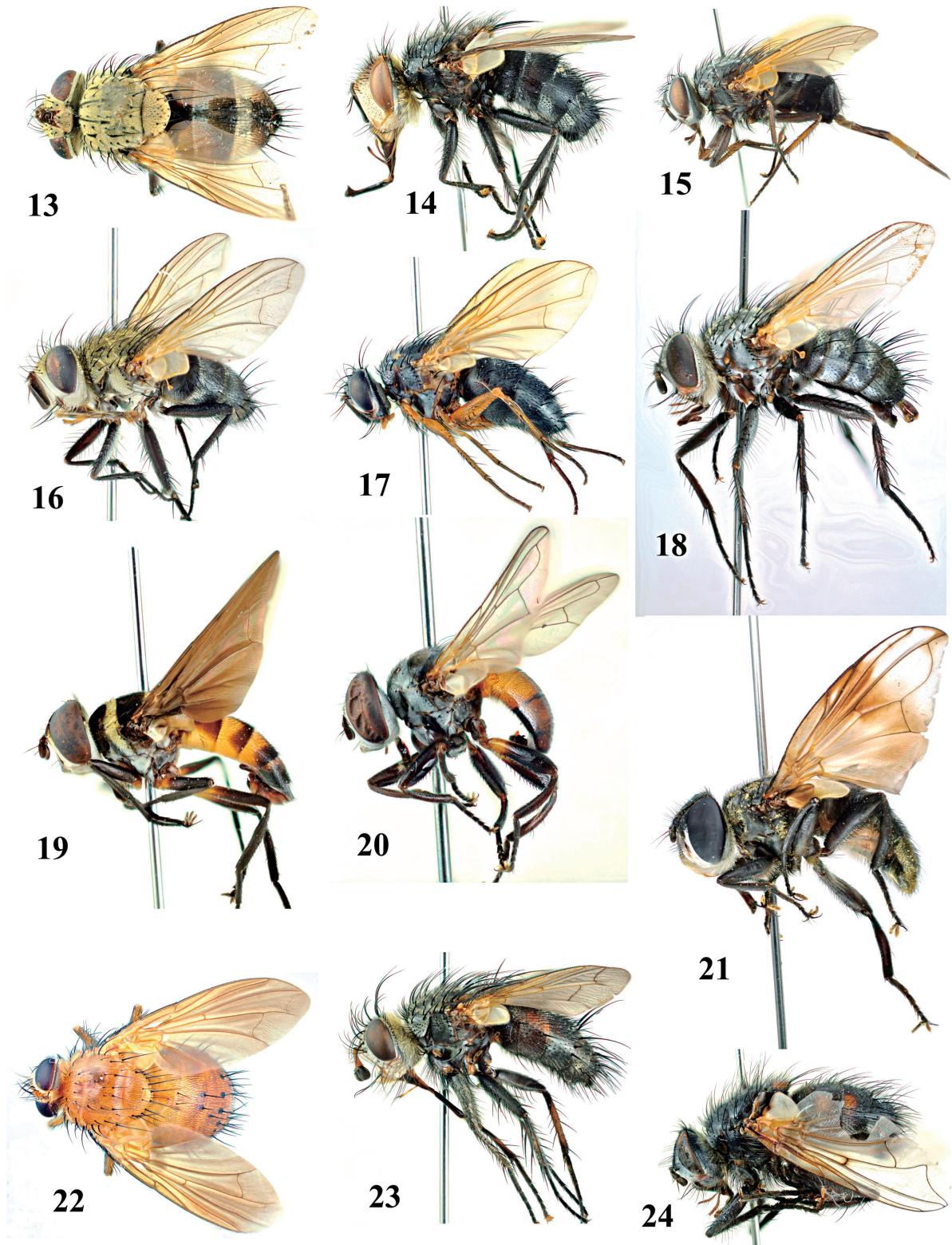
1♂, Kasahara, Ogawa, 7.v.2004; 1♂, Irikawa, Ôtaki, i.vi.1986; 1♂, Shiga, Ranzan, 12.vi.1999.

*Note.* This species has a wide frons and parafacial and a dark reddish brown palpus.

177. \**Botria frontosa* (Meigen)

- = *Bothria frontosa* (Meigen) (Hara, 1978).  
Tachi (2013a: 378): Kodama.
178. *Botria* sp.  
2♂, Mt. Futago, Ogano, 28.v.2002.  
*Note.* This species closely resembles *B. japonica* Mesnil known only from Japan, but appears to be different in the narrow frons and the male terminalia. It has been collected also in Aomori City and Mt Zao, Miyagi Prefecture.
179. \**Calozenillia tamara* (Portschinsky)  
= *Tamaromyia tamara* (Portshinsky) (Hara, 1978).  
1♀, Hosokubotani, Chichibu, 24.vii.1977, TN; 1♂, Jûniten, Kodama, 15.viii.1991; 2♂, Mt. Kasa, Ogawa, 13.vi.1997, 16.vi.2000; 1♂1♀, Mt. Sengen, Ogawa, 12.vi, 30.ix.1997; 1♂, Yanô, Kamiizumi, 5.ix.1993, TN; 1♂, Onagata, Yoshida, 18.viii.1988, TN.
180. *Carceliella octava* (Baranov)  
= *Carcelia* (*Carceliella*) sp. 1 (Hara, 1978).  
16 exs.: Chichibu (Urayama); Kônan (Shio); Ogano (Kurao); Ogawa (Nishifurusato, Mt. Sengen, Shimofurudera); Ranzan (Furusato, Hirono, Oppata, Shiga, Shôgunsawa).
181. *Cyzenis* sp.  
3♂, Mt. Kanetsukidô, 11.iv.2001, Yorii, 8.iv.2002.  
*Note.* This is probably an undescribed species. It has been collected also in several localities in Hokkaido, Honshu, Shikoku and Kyushu.
182. *Dolichocolon abstrusum* (Cerretti & Shima)  
= *Dolichocolon* sp. (Hara, 1978).  
1♂, Oshikiri, Kônan, 24.viii.1993; 1♂, Arakawakawara, Okegawa, 7.vii.1975; 1♂, Takakura, Tsurugashima, 19.ix.1987; 1♀, Furusato, Ranzan, 13.x.1997. Cerretti & Shima (2011: 568): ♂ holotype, Yorii.
183. *Dolichocolon orientale* Townsend  
1♂, Shimozato, Ogawa, 26.viii.1995; 1♂, Yotsuyama, Ogawa, 8.vi.1998; 1♀, Shiga, Ranzan, 17.vi.1998.
184. *Erythrocerca genalis* (Aldrich)  
1♀, Mt. Jômine, Kamiizumi, 5.viii.1995.
185. *Erythrocerca* sp.  
1♀, Mt. Kasa, Ogawa, 25.v.1996; 1♀, Mt. Hachiman, Yorii, 6.v.1979; 1♂, Mure, Yorii, 17.iv.2001.
186. \**Eumea linearicornis* (Zetterstedt)  
= *Eumea westermanni* (Zetterstedt) (Hara, 1978).  
53 exs. Chichibu (Urayama); Kodama (Miyauchi); Kônan (Shio); Kumagaya (Arakawa-ôhashi); Ogawa (Kasahara, Kuriyama, Mt. Sengen, Takami, Yotsuyama); Okabe (Imaizumi); Ôtaki (Shôgen Pass, Tochimoto); Ranzan (Sugiyama, Mt. Ôhira); Toda (Myôkenji); Urawa (Akigase); Yorii (Mt. Kanetsukidô).
187. *Frontina femorata* Shima セスジヒゲナガハリバエ  
1♀, Mt. Jômine, Kamiizumi, 24.viii.1994; 1♀, Mt. Futago, Ogano. 2.x.2005; 1♀, Mikuni Pass, 1800 m, Ôtaki, 28.viii.1986, 12.viii.1994.
188. *Frontina nigritibialis* Shima  
1♀, Ôtaki, 12.viii.1994.
189. *Frontina tricolor* Shima (Fig.13)  
1♀, Hirogawara, Chichibu, 31.vii.1979; 1♀, Kamifurudera, Ogawa, 11.viii.1992; 1♀, Kawamata, Mizunomoto, Ôtaki, 24.viii.1985, TN; 1♀, Takinosawa, Ôtaki, 1.viii.1992, TN; 1♀, Tochimoto, Ôtaki, 2.vii.2001; 1♀, Mt. Jômine, Yoshida,

- 2.vii.2001. Shima (1988: 34): ♂ holotype, 1♂13♀ paratypes, Mt. Bukô. (BLKU).
190. \**Gonia chinensis* (Wiedemann) オオズクロスジハリバエ  
 = *Turanogonia chinensis* (Wiedemann) (Hara, 1978).  
 20 exs.: Chichibu (Urayama); Kamiizumi (Mt. Jômine); Kodama (Inasawa); Ogano (Mt. Futago); Ogawa (Mt. Sengen); Ogose; Ôtaki (Irikawa, Kawamata, Mikuni Pass); Ranzan (Yoshida); Yorii (Kanetsukidô).
191. *Gonia divisa* Meigen オオズクロハリバエ  
 1♂, Minano Highschool, Minano, 12.iv.1974; 1♀, Kanetsukidô, Yorii, 8.iv.1978.
192. *Gonia ussuriensis* (Rohdendorf)  
 1♀, Irikawa, Ôtaki, 1.vi.1985; 1♂, Fuefuki Pass, Ranzan, 12.iv.2000; 1♂, Kashiwaginuma, Ranzan, 18.iv.2000; 1♂, Mure, Yorii, 17.iv.2001, TN; 1♂6♀, Mt. Kanetsukidô, Yorii, 5.iv.1980, 27.iv.2001; 1♀, Mikayama, Yorii, 15.v.1983.
193. *Hapalioloemus* sp. **Genus New to Japan**  
 1♀, Ôfuchi, Minano, 30.x.1974.  
*Note.* *Hapalioloemus* Baranov is known from two species from India and Myanmar, but some undetermined species have been collected from several localities in the Oriental Region and Japan. This species might be undescribed and has been collected also in Hokkaidô, Ishikawa and Kyoto.
194. *Hebia flavipes* (Robineau-Desvoidy)  
 1♀, Shio, Kônan, 4.v.1993, TN; 1♀, Yotsuyama Shrine, Ogawa, 26.iv.1993; 1♀, Irikawa, Ôtaki, 23.vi.1986; 1♂1♀, Mt. Kanetsukidô, Yorii, 8.iv.2002, 16.iv.2004.
195. *Kuwanimyia conspersa* Townsend  
 = *Archiclops* sp. (Hara, 1978).  
 1♂1♀, Ôbagawa, Yoshikawa, 30.ix.1978.
196. *Myxexoristops stolidus* (Stein)  
 = *Myxexoristops blondeli* (Robineau-Desvoidy) *sensu* Hara (1978), misidentification.  
 1♀, Koshinone, Ogano, 23.v.1992, TN; 1♀, Hacchôko, Yoshimi, 27.v.1973.
197. *Myxexoristops* sp.  
 1♂, Itai, Kônan, 4.v.1996.
198. *Onychogonia flaviceps* (Zetterstedt) **New to Japan** (Fig.14)  
 3♂, Karisaka, Ôtaki, 30.vii.1974; 1♀, Mt. Hafu, Karisaka, Ôtaki, 19.viii.1973.  
*Note.* The genus *Onychogonia* Brauer & Bergenstamm is known from three species in the Palearctic Region, but has not been recorded before from Japan.
299. \**Pales angustifrons* (Mesnil)  
 1♂, Mt. Jinmi, Kodama, 7.viii.1989.
200. *Pales carbonata* (Mesnil) サラサヒトリウジバエ  
 = *Pales townsendi* (Baranov) *sensu* Hara (1978), misidentification; *Pales* sp. 2 (Hara, 1978).  
 1♂, Kasahara, Ogawa, 5.vii.1994.
201. \**Pales pavida* (Meigen) カイコノクロウジバエ  
 132 exs.: Ageo (Hirakata); Iwatsuki (Ôto-dairokutenjin); Kamiizumi (Mt. Jômine, Yanô); Kitamoto (Ishidojuku); Kodama (Mt. Jinmi, Jûniten); Kônan (Oshikiri, Itai, Shio, Sugahiro); Kurao (Ikebara); Minano (Mt. Ôgiri); Miyashiro; Ogano (Mt. Futago); Ogawa (Mt. Kasa, Mt. Sengen, Takami, Yotsuyama Shrine); Ôtaki (Tochimoto); Ranzan (Fuefuki Pass, Kashiwaginuma, Mt. Ôhira, Shiga, Tarômaru, Tôyama); Satte (Chizuka, Gongendô Bank, Nishisekiyado, Takasugaie); Yamazaki; Yorii (Mt. Hachiman, Iwasakikawara, Mt. Kanetsukidô, Mure, Sakurazawa).



13: *Frontina tricolor* Shima, female (Yokose), 14: *Onychogonia flaviceps* (Zetterstedt), female (Karisaka, Ôtaki), 15: *Scaphimyia takanoi* Mesnil, female (Kamiizumi), 16: *Sericozenillia albipila* (Mesnil), male (Mase, Kodama), 17: *Suensonomyia nudinerva* Mesnil, male (Sendai, Kōnan), 18: *Parerigone macrophthalma* Herting, female (Mt. Ôhira, Ranzan), 19: *Pentatomophaga latifascia* Villeneuve, male (Mt. Futago, Ogano), 20: *Perigynsoma globulum* (Villeneuve), male (Mt. Futago, Ogano), 21: *Phasia takanoi* (Draber-Moňko), male (Ôtaki), 22: *Glaurocara lucidula* Richter, female (Mt. Jōmine, Kamiizumi), 23: *Peleteria sphericera* (Macquart), male (Nishifurusato, Ogawa), 24: *Panzeria vagans* (Meigen), male (Jūmonji, Ôyama).

202. *Pales peregrina* Herting **New to Japan**

= *Pales* sp. 1 (Hara, 1978).

10♂5♀: Chichibu (Hirogawara); Hidaka (Gojōnotaki); Kamiizumi (Mt. Jōmine); Kitamoto (Ishidojuku); Kodama (Mase); Kōnan (Sendai); Minano (Mt. Happu); Ogano (Mt. Futago); Ogawa (Mt. Kasa); Ōtaki (Mikuni Pass).

*Note.* This species was described from Europe by Herting (1975: 4) and we identify one of the commonest species of *Pales* in Japan as this species. This species has not been recorded previously from Japan.

203. *Pales* sp. 1.

1♂, Kasahara, Ogawa, 17.vi.1998; 1♀, Mt. Kanetsukidō, Yorii, 22.v.2000.

*Note.* This species is characterized by having posterodorsal setae on the hind tibia. This character state is known also in *Pales coxalis* (Mesnil), but it has yellowish tibiae whereas *Pales* sp. 1 has black tibiae.

204. *Pales* sp. 2.

1♂16♀: Kamiizumi (Yanō); Kitamoto (Ishidojuku); Kumagaya (Ōaso); Ogano (Kakkaku); Ranzan (Kashiwaginuma, Kamagata, Oppata, Shiga, Tōyama); Urawa (Akigase); Yorii (Mt. Kanetsukidō, Mure, Sakurazawa).

*Note.* This species has posterodorsal setae on the hind tibia, which are also found in *P. coxalis* and the preceding species. The abdomen of this species is bluish and different from the black abdomen of *P. coxalis* and *P. sp. 1*.

205. *Pales* sp. 3.

1♂, Ōto-dairokutenjin, Iwatsuki, 26.xi.1989; 1♂, Ishidojuku, Kitamoto, 26.v.1990, TN; 1♂, Takasuganuma, Satte, 29.vii.1996.

*Note.* This species resembles *Pales peregrina* Herting, but has a wider frons.

206. *Pales* sp. 4

1♂, Mt. Jōmine, Kamiizumi, 9.x.1993.

*Note.* This black species resembles the velvety black species *Pales carbonata* Mesnil, but its thoracic dorsum is whitish gray pruinose.

207. \**Pexopsis pilosa* Mesnil

1♂, Ogose, 25.iv.1979, TN; 1♂, Mt. Ōhira, Ranzan, 12.v.2001.

208. *Phryno brevicornis* Tachi

1♂, Jūniten, Kodama, 3.iv.1990; 1♂, Obokawa, Yokose, 25.iv.1979; 1♂, Mt. Kanetsukidō, Yorii, 8.iv.2002. Tachi (2013a: 365): 1♂ paratype, Ōtaki.

209. \**Phryno katoi* Mesnil

12♂, Mt. Kanetsukidō, Yorii, 8.iv.2002. Tachi (2013a: 369): Tokorozawa.

210. *Phryno tenuiforceps* Tachi

1♂, Mt. Jōmine, Kodama, 3.iv.1990; 1♂, Jūniten, Kodama, 3.iv.1990; 1♂, Mt. Ōhira, Ranzan, 12.iv.1997, TN. Tachi (2013a: 373): 1♂ paratype, Moroyama.

211. *Pseudogonia rufifrons* (Wiedemann) オオズハイイロハリバエ

= *Onycogonia* sp. (Hara, 1978, misidentification).

3♂7♀: Kamiizumi (Yanō); Okabe (Imaizumi); Ogano (Kuraō); Ogose (Ogose High School); Ranzan (Kawashima, Oppata, Yoshida); Yoshikawa (Ōbagawa).

212. *Rhacodinella* sp.

2♂, Ōyagi, Moroyama, 7.ix.1980, CT.

*Note.* This species resembles *Rhacodinella aurata* Mesnil described from Japan (Shikoku), but has not been confirmed as this species.

213. \**Scaphimyia takanoi* Mesnil (Fig. 15)

1♀, Mt. Jômine, Kamiizumi, 28.vii.1995; 1♂1♀, Ikebara, Kuraô, 1.x.1988, 24.vi.1989, MA; 1♀, Shiga, Ranzan, 17.vi.1998.

214. \**Sericozenillia albipila* (Mesnil) (Fig. 16)

40 exs.: Kamiizumi (Mt. Jômine, Yanô); Kodama (Inasawa, Mt. Jinmi, Jûniten-ike, Mase); Kuraô (Ikebara); Ogano (Mt. Tetemizu, Mt. Futago, Kuraô); Ogawa (Kuriyama); Ôtaki (Irikawa, Shôgen Pass); Ranzan (Furusato).

215. \**Sturmia bella* (Meigen) マダラヤドリバエ

3♂7♀: Chichibu (Urayama); Kitamoto (Hikawa Shrine); Kodama (Jûniten); Kônan (Shio); Minano (Ôfuchi); Ogawa (Shimosato); Ranzan (Furusato, Senjudô).

216. *Suensonomyia nudinerva* Mesnil (Fig. 17)

= *Suensonomyia* sp. (Hara, 1978).

3♂1♀, Sendai, Kônan, 31.v.1994; 1♂2♀, Nishifurusato, Ogawa, 20.vii.1998; 1♂, Nômasu, Ogawa, 30.x.1992; 1♀, Oppata, Ranzan, 5.vi.2000.

217. \**Takanomyia scutellata* Mesnil

18 exs.: Kamiizumi (Mt. Jômine, Yanô); Kodama (Inasawa); Ogano (Kuraô); Ogawa (Mt. Futago); Ogose; Ôtaki (Mikuni Pass, Takinosawa, Tochimoto); Ranzan (Mt. Ôhira); Satte (Takasuga-ike); Yoshida (Mt. Jômine); Yorii (Mt. Kanetsukidô).

218. \**Zenillia dolosa* (Meigen)

1♀, Iwatsuki, 26.xi.1987; 1♀, Gongendô Bank, Satte, 30.iv.1998; 1♀, Nishisekiyado, Satte, 28.x.1997; 2♀, Akigase, Urawa, 4.v.1985.

219. *Zenillia phrynoides* (Baranov)

1♀, Shôgunsawa, Ranzan, 18.v.2001.

### Tribe Winthemiini

220. \**Nemorilla floralis* (Fallén) ギンガオハリバエ

49♂7♀: Kitamoto (Ishidojuku); Kodama (Hyakutaikannon, Jûniten); Kônan (Oshikiri, Shio); Nagatoro (Fudôsan); Ogano (Mt. Futago); Ogawa (Kasahara, Mt. Sengen, Yotsuyama); Ôtaki (Tochimoto); Ranzan (Kashiwaginuma, Mt. Ôhira); Satte (Gongendô Bank); Tsurugashima (Takakura); Yorii (Mt. Hachiman, Mt. Kanetsukidô); Yoshida (Mt. Jômine).

221. \**Smidtia amoena* (Meigen) ホオゲハリバエ

= *Timavia amoena* Meigen (Hara, 1978).

35♂24♀, Chichibu (Hashidate River); Hidaka (Hiwadasan); Kodama (Inasawa, Mt. Jinmi, Jûniten, Miyauchi); Kamiizumi (Mt. Jômine); Kônan (Shio); Ogano (Mt. Futago, Kakkaku, Koshinone); Ogawa (Aoyama, Kasayama Pass, Mt. Sengen); Ogose (Ogose High School); Ôtaki (Hamadaira, Irikawa, Ôwa, Tochimoto); Ranzan (Mt. Ôhira); Yorii (Kamafuse Pass, Mt. Kanetsukidô, Mikayama, Orihara).

222. *Smidtia amurensis* (Borisova)

1♀, Ishidojuku, Kitamoto, 15.v.1985; 1♂, Iwata, Nagatoro, 28.v.1985.

223. *Smidtia fukushii* Shima

6♂, Mt. Jinmi, Kodama, 5.v.1991, 12.v.2004.

224. *Smidtia harai* Shima

1♂, Kakkaku, Ogano, 30.iv.1990, TN; 1♂, Tochimoto, Ôtaki, 2.vii.2001; 1♂, Ôwa, Ôtaki, 17.vi.2006. Shima (1996: 188): 1♂ paratype, Mitsumine.

225. \**Smidtia japonica* (Mesnil)

= *Timavia japonica* Mesnil (Hara, 1978).



- 1♂, Mt. Dôdaira, Ogawa, 3.vii.1998; 1♀, Irikawa, Ôtaki, 31.v.1986.
226. *Smidtia verna* (Kocha)  
1♀, Mt. Kasa Pass, Ogawa, 22.v.1999.
227. *Winthemia brevipennis* Shima  
Shima (1996: 210): ♂ holotype, Ogose (BLKU).
228. *Winthemia cruentata* (Rondani)  
= *Winthemia* sp. 1, (Hara, 1978).  
48♂3♀: Chichibu (Hirogawara); Kamiizumi (Yanô); Kodama (Mt. Jinmi); Ogawa (Kasahara, Mt. Kasa, Mt. Kinshô, Mt. Sengen, Yotsuyama); Ôtaki (Tochimoto); Ranzan (Shiga, Mt. Ôhira); Yorii (Mt. Hachiman, Kamafuse Pass, Mt. Kanetsukidô, Mikayama); Yoshida (Mt. Jômine).
229. *Winthemia marginalis* Shima, Chao & Zhang  
= *Winthemia* sp. 3 (Hara, 1978).  
Shima et al. (1992: 223): 2♂ paratypes, Kodama, Minano.
230. *Winthemia speciosa* (Egger)  
1♀, Yotsuyama, Ogawa, 8.x.1997; 1♀, Kodama, 9.viii.1982, TN.
231. *Winthemia venusta* (Meigen)  
= *Winthemia* sp. 2 (Hara, 1978).  
28♂5♀, Kamiizumi (Mt. Jômine); Kodama (Jûniten); Kônan (Oshikiri); Ogawa (Kasahara, Mt. Kasa, Kuriyama, Mt. Sengen, Shimofurutera, Yotsuyama Shrine); Ogose; Ôtaki (Tochimoto); Ranzan (Fuefuki Pass, Furusato, Mt. Ôhira).
232. *Winthemia venustoides* Mesnil  
1♀, Mt. Ôhira, Ranzan, 28.viii.1997. Shima (1996: 205): Moroyama.
233. *Winthemia* sp.  
1♀, Urayama, Chichibu, 9.vii.1979; 1♀, Nishione, Mt. Buko, Chichibu, 24.vii.1977.  
*Note.* This is a large species resembling *W. harai*, but differs from it by having black hairs on the anepisternum and 2–3 setrong anterodorsal setae on the mid tibia.

## Subfamily PHASIINAE ヒラタヤドリバエ亜科

### Tribe Cylindromyiini

234. *Cylindromyia arator* Reinhard **New to Japan**  
1♂2♀, Oshikiri, Kônan, 27.vi,15.viii.1993, 25.vii.1994, TN.
235. *Cylindromyia pandulata* (Matsumura)  
19♂11♀: Kamiizumi (Takaushi, Yanô); Kodama (Jûniten, Kibe); Minano (Nihongi Pass); Ogawa, (Mt. Kasa); Ôtaki (Tochimoto); Yorii (Fûpu, Gonotsubo, Mt. Kanetsukidô); Yokose (Obokawa); Yoshida (Mt. Jômine).
236. *Cylindromyia umbripennis* (Wulp)  
1♀, Irinamisawa, Nakatsugawa, Ôtaki, 2.ix.1990, TN.
237. *Hemyda hertingi* Ziegler & Shima **New to Japan**  
1♂, Urayama, Chichibu, 1.viii.1979; 1♀, Mt. Jômine, Kamiizumi, 24.viii.1994; 1♀, Koshinone, Ogano, 23.v.1992; 1♂, Kuriyama, Ogawa, 12.vi.1993; 1♂, Irikawa, Ôtaki, 24.v.1987; 1♀, Shôgen Pass, Ôtaki, 30.vii.1983.
238. *Hemyda obscuripennis* (Meigen)

- 1♀, Mt. Futago, Ogano, 8.viii.2000; 1♂, Mt. Kasa, Ogawa, 31.vii.1995; 1♀, Irinamisawa, Nakatsu, Ôtaki, 26.viii.1991, TN.  
 239. \**Hermya beelzebul* (Wiedemann) クロヒゲナガハリバエ  
 Hara (1978): Karisaka, Ôtaki.  
 240. *Lophosia fasciata* Meigen  
 1♀, Okuchichibu-rindô, Ôtaki, 5.viii.1981, TN; 1♀, Shôgen Pass, Ôtaki, 3.viii.1985.

**Tribe Leucostomatini**

241. *Calyptromyia barbata* Villeneuve  
 = *Calyptromyia* sp. 1, sp. 2 (Hara, 1978).  
 1♀, Jûniten, Kodama, 22.vii.1988, TN; 1♂, Kurao, Ogano, 26.viii.1988; 1♂, Takami, Ogawa, 11.vii.1993, TN; 1♂, Sekiguchi, Ranzan, 20.viii.1997.  
 242. *Clelimyia paradoxa* Herting  
 Herting (1981: 16): ♂ holotype, Minano (BLKU).  
*Note.* This was described as a new genus and species based on two males from Minano, Saitama (holotype) and Kagoshima (paratype). This species has not been found in other places since the original description.  
 243. *Dionaea karinae* Draber-Moňko  
 = *Dionaea aurifrons* (Meigen) *sensu* Hara (1978), misidentification.  
 1♀, Oshikiri, Kônan, 2.x.1983; 1♂, Ogose, 1.x.1979, TN; 1♀, Kashiwagi-numa, Ranzan, 24.x.2000; 2♂2♀, Yoshida, Ranzan, 18.vi.2003, MU.  
 244. *Leucostoma* sp.  
 1♀, Tarômaru, Ranzan, 10.v.1998; 1♀, Yoshida, Ranzan, 18.vi.2003, MU; 1♀, Ôuchisawa, Yorii, 29.iv.1972.  
*Note.* This species resembles the European *L. tetraptera* (Meigen), but has not been confirmed as that species.

**Tribe Parerigonini**

245. *Parerigone macrophthalma* Herting (Fig. 18)  
 1♀, Jûniten, Kodama, 4.v.1989; 1♂, Mt. Ôhira, Ranzan, 14.vi.1997; 1♀, Hirono, Ranzan, 12.vi.1999.  
 246. *Zambesomima hirsuta* Mesnil  
 1♂, Mitsumine, Yoshida, 23.vii.1974; 1♂, Kamafuse, Yorii, 21.v.1978.

**Tribe Phasiini**

247. *Compsoptesis* sp.  
 1♀, Mt. Kasa, Ogawa, 17.xi.1998.  
*Note.* This species is probably undescribed. It has been collected also in Honshu (Imperial Palace, Tokyo, and Shizuoka) and Kyushu (Fukuoka and Ôita) (Shima & Shinonaga, 2014: 455).  
 248. *Ectophasia crassipennis* (Fabricius) ナカグロヒラタヤドリバエ  
 1♀, Mt. Futago, Ogano, 27.v.1977.  
 249. \**Ectophasia rotundiventris* (Loew) シナヒラタヤドリバエ  
 = *Ectophasia sinensis* Villeneuve (Hara, 1978).

18 exs.: Kamiizumi (Mt. Jômine); Ogano (Kurao, Mt. Futago); Ogawa (Mt. Kasa, Kuriyama, Nishifurusato); Ôtaki (Irikawa, Takinosawa, Tochimoto); Ranzan (Yoshida).

250. *Gymnosoma inornatum* Zimin

1♀, Seinennoie, Kamikawa, 13.vi.1974; 1♂, Ochiaibashi, Kodama, 14.iv.1973; 1♀, Sukake, Yoshida, 8.x.1972.

251. \**Gymnosoma rotundatum* (Linnaeus) マルボシヒラタヤドリバエ

1♂1♀, Mt. Misuzu, Minano, 8.viii.2002; 1♂, Nishifurusato, Ogawa, 21.vi.1998; 1♂1♀, Kibe, Ogawa, 21.viii.1993; 1♂, Kamifurusato, Ogawa, 2.viii.1992; 1♂, Mt. Kanetsukidô, Yorii, 12.viii.1979.

252. *Pentatomophaga latifascia* (Villeneuve) (Fig. 19)

1♂, Hashidate River, Chichibu, 13.viii.1979; 2♂, Kurano, Ogano, 26.viii.1988; 1♂, Mt. Futago, Ogano, 2.x.2001; 1♀, Yotsuyama, Ogawa, 8.x.1997; 1♂, Mt. Misuzu, Yorii, 19.ix.2002.

253. *Perigymnosoma globulum* Villeneuve **New to Japan** (Fig. 20)

1♂, Kurao, Ogano, 26.viii.1988; 1♂, Takigawatani, Ôtaki, 29.vii.1972.

*Note.* The genus *Perigymnosoma* Villeneuve was described for a new Taiwanese species, *P. globulum*. This species has been recorded also from India and the Russian Far East (O'Hara et al., 2009: 135). It is known only from Saitama in Japan.

254. *Phasia aurulans* Meigen

1♂, Kurao, Ogano, 15.x.1989; 1♀, Mt. Futago, Ogano, 27.x.2000; 1♂, Mt. Sanpô, Ôtaki, 6.x.1974; 3♂4♀, Tochimoto, Ôtaki, 11.x.2000.

255. *Phasia hemiptera* (Fabricius) ダイミヨウヒラタヤドリバエ

1♀, Shiroku, Arakawa, 20.v.1979; 2♀, Ikebara, Kurao, 29.iv, 27.v.1989; 1♂, Mt. Kasa, Ogawa, 20.v.1996; 1♂, Irikawa, Ôtaki, 23.v.1986; 5♂5♀, Mikuni Pass, 1800 m, Ôtaki, 12.viii.1994, 28,30.viii.1986; 1♀, Tochimoto, Ôtaki, 22.v.2002.

256. *Phasia japonensis* Sun

1♂, Hashidate Riv., Chichibu, 14.xi.1977; 1♂, Kamimisawa, Minano, 25.x.1972; 2♂, Mt. Futago, Ogano, 27.x.2002; 2♂, Tochimoto, Ôtaki, 11.x.2000.

257. *Phasia pusilla* Meigen

3♀, Shôgunzawa, Ranzan, 18.v.2001.

258. *Phasia takanoi* (Draber-Moňko) (Fig. 21)

3♂, Mt. Jômine, Kamiizumi, 9.x.1993; 2♂, Takinosawa, Ôtaki, 11.xi.1991; 1♂, Tochimoto, Ôtaki, 25.x.2001.

259. *Phasia* sp.

1♂, Jûniten, Kodama, 10.x.1990, TN; 1♂, Daitsuji, Minano, 6.x.1977, TN; 1♀, Otaniki, Moroyama, 1.vii.1979, NT; 1♂, Mt. Kasa, Ogawa, 17.xi.1998; 1♀, Mt. Misuzu, Yorii, 19.ix.2002.

*Note.* This species is probably undescribed. This species resembles *Phasia caudata* (Villeneuve) known from Taiwan and the Philippines (O'Hara, et al., 2009).

### Tribe Strongygastrini

260. *Melastrongygaster atrata* Shima

Shima (2015: 429): 2♂ paratypes, Yorii.

*Note.* This species was published after publication of the Catalogue of the Insects of Japan (Shima, 2014).

**Subfamily TACHININAE セスジハリバエ亜科****Tribe Brachymerini**

261. *Pseudopachystylum goniaeoides* (Zetterstedt) オオズホソナガハリバエ

2♂1♀, Karisaka, 30.vii.1976.

*Note.* The specific name of this species is misspelled as *Pseudopachystylum* “*gonioides*” in the Catalogue of Insects of Japan (Shima, 2014: 869).

262. *Pseudopachystylum marginalis* (Mesnil & Shima)

1♂, Tochimoto, Ôtaki, 22.v.2002.

**Tribe Ernestiini**

263. \**Chrysosomopsis auratus* (Fallén) クチナガルリハリバエ

1♂, Mt. Jômine, Kamiizumi, 28.vii.1995; 1♀, Inasawa, Kodama, 10.x.1980; 3♂2♀, Mt. Sengen, Ogawa, 2.vi.1994, 16.vi.1993; 1♀, Tomoo, Ogawa, 26.vi.1999; 1♀, Furusato, Ranzan, 25.ix.1998; 2♀, Hirono, Ranzan, 14.v.2003; 1♂, Gonotsubo, Yorii, 1.x.1978, TN; 1♂1♀, Mt. Kanetsukidô, Yorii, 25.v.2000, 16.x.2002.

264. *Hyalurgus abdominalis* (Matsumura)

3♀, Mikuni Pass, 1800 m, Ôtaki, 3.viii.1974; 2♀, Shôgen Pass, Ôtaki, 1–3.viii.1985.

265. \**Hyalurgus sima* (Zimin)

1♂ Irikawa, Ôtaki, 23.v.1986; 1♂, Karisaka Pass, Ôtaki, 30.vii.1983; 3♂2♀, Mikuni Pass, 1800 m, Ôtaki, 12.viii.1994; 5♂, Shôgen Pass, Ôtaki, 29.vii.1976, 3.viii.1995; 1♀, Mt. Wanakura, Ôtaki, 2.viii.1985.

266. \**Janthinomyia elegans* (Matsumura) ルリアシナガハリバエ

= *Janthinomyia magnifica* (Zimin) (Hara, 1978).

1♂, Mt. Jinmi, Kodama, 7.vi.1989; 1♀, Shio, Kônan, 25.vii.1995, TN; 1♂, Ôfuchi, Minano, 20.vi.1979; 1♀, Dôman, Toda, 23.ix.1986, TN; 2♂, Mt. Jômine, Yoshida, 3.vii.2001.

267. *Linnaemya (Linnaemya) ambigua* Shima

1♂, Mt. Kasa, Ogawa, 13.vi.1997; 1♀, Sakurazawa, Yorii, 15.x.2000. Shima (1986: 43): 2♂ paratypes, Ôtaki, Yorii.

268. \**Linnaemya (Linnaemya) atriventris* (Malloch)

= *Linnaemya montshadskyi* Zimin (Hara, 1978).

1♀, Mt. Jômine, Kamiizumi, 28.vii.1995; 1♀, Yotsuyama, Ogawa, 8.x.1994; 2♀, Sakurazawa, Yorii, 10.x.2003. Shima (1986: 74): Arakawa, Minano, Ogano, Ôtaki.

269. *Linnaemya (Linnaemya) pallidohirta* Chao

1♂2♀, Yanô, Kamiizumi, 5.ix.1993, 9.x.1993; 2♀, Inasawa, Kodama, 10.x.1989; 1♀, Mt. Jinmi, Kodama, 15.ix.1989; 1♀, Akagi, Ogawa, 27.ix.1997. Shima (1986: 53): Moroyama.

270. *Linnaemya (Linnaemya) speciosissima* Mesnil

1♀, Mt. Jômine, Kamiizumi, 24.viii.1994.

271. \**Linnaemya (Linnaemya) tessellans* (Robineau-Desvoidy)

61 exs.: Kamiizumi (Mt. Jômine, Shimoakuhara); Kônan (Nohara); Minano (Mt. Happu); Ogawa (Mt. Kasa, Mt. Sengen, Kuriyama, Yotsuyama Shrine); Ogano (Mt. Futago); Okabe (Imaizumi); Ôtaki (Irikawa, Mt. Wanakura, Takinosawa, Tochimoto); Ranzan (Mt. Ôhira, Senjudô, Sugayayakata-ato); Urawa (Akigase); Yorii (Gonotsubo, Mt. Kanetsukidô, Sakurazawa, Yamasaki).

Shima (1986: 42): Kamikawa, Minano, Tokigawa, Yorii.

272. *Linnaemya (Linnaemya) tuberculata* Shima

1♂, Jômine Shrine, Kamiizumi, 5.ix.1993, TN; 1♂, Mt. Happu, Minano, 14.v.2002; 2♂, Akagi, Ogawa, 27.ix.1997; 1♂, Mt. Kasa, Ogawa, 13.vi.1997; 1♂, Takinosawa, Ôtaki, 6.vi.1992, TN.

273. *Linnaemya (Linnaemya) sp.*

1♂, Mt. Kasa, Ogawa, 13.vi.1997.

*Note.* This species resembles *L. hirtipennis* Shima from Hokkaido, but is different in the hirsute wing veins, length of the palpus, and shape of the male cerci. This species is probably undescribed.

274. *Linnaemya (Ophina) microchaetopsis* Shima

= *Linnaemya microchaeta* Zimin *sensu* Hara (1978), misidentification.

Shima (1986: 35): 1♂7♀ paratypes, Hodosan, Kodama, Minano, Yorii.

275. \**Linnaemya (Ophina) picta* (Meigen) チビヒゲハリバエ

45 exs.: Chichibu (Hirogawara); Kamiizumi (Mt. Jômine, Yanô); Kodama (Jûniten-ike); Nagatoro (Iwadatami); Ogano (Mt. Tetemizu, Kurao); Ogawa (Kuriyama); Ôtaki (Irikawa, Karisaka Pass, Kawamata); Ranzan (Furusato); Yorii (Fûpu, Gonotsubo, Mt. Kanetsukidô, Mure, Rizawa, Sakurazawa). Shima (1986: 37): Fûpu, Hanno, Hatoyama, Kodama, Minano, Yorii.

276. \**Linnaemya (Ophina) zachvatkini* Zimin

1♂, Mt. Jômine, Kamiizumi, 24.viii.1994; 1♂, Mt. Jinmi, Kodama, 15.ix.1989; 1♂, Kuriyama, Ogawa, 2.x.1997; 1♀, Hongo, Okabe, 12.x.2001; 1♂, Mikuni Pass, 1800 m, Ôtaki, 12.viii.1994, TN, KH; 2♂, Mt. Ôhira, Ranzan, 18.x.1997, 7.vii.1999, TN; 1♀, Gonotsubo, Yorii, 9.x.1978; 1♀, Iwasaki, Yorii, 27.x.1985. Shima (1986: 37): Fûpu, Hanno, Hatoyama, Kodama, Minano, Yorii.

277. \**Panzeria anthophila* (Robineau-Desvoidy) ケブカハリバエ

4♀, Hirogawara, Chichibu, 31.vii.1979; 1♀, Kurao, Onagata, 9.iv.1989, MA; 1♂, Irikawa, Ôtaki, 23.v.1986; 1♂, Tsundashi Pass, Ôtaki, 28.viii.1983, TN; 1♂, Mt. Wanakura, Ôtaki, 2.viii.1985.

278. *Panzeria connivens* (Zetterstedt)

= *Eurythia* sp. (Hara, 1978).

1♂, Mt. Bukô, 1300 m, Chichibu, 14.vii.1978; 1♀, Nishione, Mt. Bukô, Chichibu, 24.vii.1977; 1♂, Gandoba — Tsundashi, Ôtaki, 28.vii.1983, TN; 1♂, Mt. Wanakura, Ôtaki, 2.viii.1985.

279. \**Panzeria inusta* (Mesnil)

= *Fausta inusta* Mesnil (Hara, 1978).

14♂22♀: Arakawa (Shiroku); Chichibu (Hashidate River); Kodama (Jûniten, Inazawa); Konan (Oegawa); Ogano (Kurao, Shirasunayama); Ogawa (Aoyama, Jôkoji, Kiroko, Kuriyama, Mt. Kasa, Mt. Sengen, Yotsuyama); Ôtaki (Irikawa, Takinosawa, Tochimoto); Ranzan (Mt. Ôhira); Satte (Nishisekiyado); Yorii (Orihara, Sakurazawa).

280. \**Panzeria melanopyga* (Zimin)

= *Meriania malanopyga* Zimin (Hara, 1978).

62 exs.: Hidaka (Shinbori); Kodama (Jûniten, Miyauchi, Mt. Jinmi); Kônan (Mishosinden, Nohara, Oshikiri); Nagatoro (Iwadatami); Ogano (Mt. Futago); Ogawa (Furudera, Mt. Kasa, Mt. Sengen, Yotsuyama, Kinshozan); Ogose (Ogose High School); Ôtaki (Irikawa); Ranzan (Kamagata, Senjudo, Mt. Ôhira, Yoshida); Tsurugashima (Takakura); Yorii (Akiyama, Mt. Kanetsukidô).

281. \**Panzeria mimetes* (Zimin) クロツヤケブカハリバエ

= *Fausta mimetes* Zimin (Hara, 1987).

3♂, Mt. Jômine, Kamiizumi, 11.vi.1996.

282. *Panzeria rudis* (Fallén) クリカラハリバエ  
 2♀, Mt. Kasa, Ogawa, 16.vi.2000; 1♂, Irikawa, Ôtaki, 23.v.1986; 1♂, Mikayama, Yorii, 15.v.1983; 1♂, Mure, Yorii, 17.iv.2001, TN.
283. *Panzeria vagans* (Meigen) **New to Japan** (Fig. 24)  
 1♂, Jûmonji, Ôyama, Ôtaki, 25.vii.1977; 1♀, Mt. Sengen, Ogawa, 1.v.1998; 1♂, Mure, Yorii, 17.iv.2001, TN.  
*Note.* This species is known in Japan only from the above specimens and a male from Toyama, Honshu.
284. *Panzeria* sp.  
 1♂, Ôfuchi, Minano, 6.v.1976; 1♂, Irikawa, Ôtaki, 23.v.1986; 1♂, Mt. Kanetsukidô, Yorii, 7.iv.1986, TN; 1♀, Mikayama, Yorii, 15.v.1983.  
*Note.* This species is undescribed. It resembles *P. rudis*, but it has in the male a wider frons and broader cerci.
285. *Zophomyia nitens* Mesnil クロツヤナガハリバエ  
 1♀, Karisaka Pass, Ôtaki, 12.viii.1986.  
*Note.* This species is recorded from Honshu for the first time.

#### Tribe Glaurocarini

286. *Glaurocara lucidula* Richter **New to Japan** (Fig. 22)  
 1♀, Mt. Jômine, Kamiizumi, 9.x.1993.  
*Note.* The genus *Glaurocara* Thomson has been known mainly from tropical Asia and Africa and had not been previously recorded from Japan. This species was described from Cheju Island, South Korea, based on a female (Richter, 1988: 204).

#### Tribe Graphogastrini

- \*287. *Phytomyptera* sp. **Genus New to Japan**  
 1♀, Shôgunzawa, Ranzan, 19.iii.1998, MU.  
*Note.* The genus *Phytomyptera* Rondani had not been previously recorded from Japan. This species has not been identified.

#### Tribe Leskiini

288. \**Atylostoma towadensis* (Matsumura) トワダナガハリバエ  
 = *Atylostoma similima* (Townsend) *sensu* Hara (1978), misidentification.  
 1♀, Inasawa, Kodama, 10.x.1989; 1♀, Takinosawa, Ôtaki, 2.ix.1990, TN.
289. *Atylostoma tricolor* (Mik)  
 1♂, Mt. Jômine, Kamiizumi, 24.viii.1994; 1♀, Mt. Jinmi, Kodama, 7.vii.1989; 1♂, Kaminakao, Ôtaki, 16.vi.1985.
290. *Atylostoma* sp. 1  
 1♂, Mt. Hachiman, Yorii, 21.v.1972; 1♂, Mt. Kanetsukidô, Yorii, 12.viii.1979.  
*Note.* This species is similar to *A. tricolor*, but differs in having a wider frons and longer male claws. The male terminalia are very similar in their structure among members of *Atylostoma*, and the identification of this species is left for further study. The same species has been collected at some localities of Honshu and Kyushu.
291. *Atylostoma* sp. 2  
 1♂, Hirogawara, Chichibu, 31.vii.1979; 1♂, Irikawa, Ôtaki, 4.viii.1980.

*Note.* This species resembles *A. towadensis*, but differs in having a more reddish abdomen, shorter male claws and reddish coxae. The identification of this species is left for further study. Additional specimens have been collected at some localities of Honshu.

292. *Demoticooides pallidus* Mesnil

1♂, Jûniten, Kodama, 10.x.1988; 1♀, Sendai, Kônan, 22.x.1994; 1♀, Shio, Kônan, 31.x.1993; 1♂, Yotsuyama, Ogawa, 8.x.1994; 1♀, Tôyama, Ranzan, 13.x.2001; 1♂, Mt. Misuzu, Yorii, 19.ix.2002; 1♀, Sakurasawa, Yorii, 3.x.2002.

293. \**Solieria aureola* Mesnil

4♂, Irikawa, Ôtaki, 25.viii.1985.

294. *Trichoformosomyia sauteri* Baranov

Tachi (2013b: 67): Moroyama.

*Note.* This species is known in Japan only from the above material.

### Tribe Macquartiini

295. \**Macquartia pubiceps* (Zetterstedt)

8♂7♀: Chichibu (Mt. Bukô); Kamiizumi (Mt. Jômine); Minano (Minoyama); Kodama (Jûniten); Ôtaki (Irikawa, Jûmonji, Ôyama, Mt. Wanakura); Ranzan (Sugiyama, Yoshida); Yorii (Kanetsukidô).

296. \**Macquartia* sp.

= *Macquartia* sp. (Hara, 1987).

2♂11♀: Ogawa (Mt. Kasa Pass, Mt. Sengen); Ogose; Kônan (Oshikiri); Ranzan (Hirono); Yorii (Mt. Hachiman, Iwasaki).

*Note.* This species resembles *M. nudigena* Mesnil from Europe, Russia and China, but a positive identification is not possible at this time. It has been collected also in Hokkaido and Honshu.

### Tribe Microphthalmini

297. *Dexiosoma caninum* (Fabricius) アカアシナガハリバエ

2♀, Urayama, Chichibu, 31.vii.1979; 1♂, Irikawa, Ôtaki, 10.vii.2000, TN; 1♀, Tochimoto, Ôtaki, 25.x.2001.

### Tribe Minthoini

298. *Dolichopodomintho takanoi* Mesnil

1♀, Mt. Futago, Ogawa, 11.x.2002; 2♀, Mt. Kasa, Ogawa, 27.ix.1997, 2.x.1997; 1♂, Mt. Sengen, Ogawa, 20.ix.1996, TN; 1♀, Kamafuse, Yorii, 4.x.1986.

299. *Sumpigaster equatialis* (Townsend)

1♀, Jûniten, Kodama, 16.viii.1992; 1♂, Yotsuyama, Ogawa, 8.vi.1998; 1♀, Fuefuki Pass, Ranzan, 28.v.1998; 1♀, Oppata, Ranzan, 11.vii.1998.

300. \**Sumpigaster sumatrensis* Townsend

17♂18♀: Kitamoto (Ishidojuku); Kodama (Jûniten, Mt. Jinmi); Kônan (Shio); Ogawa (Mt. Kasa, Kuriyama, Mt. Sengen, Yotsuyama, Sugayayakata-ato), Minano (Mt. Happu); Ogose (Kuroyama); Ranzan (Furusato, Shiga, Mt. Ôhira); Ryokami (Yakushidô); Yorii (Fûpu, Mikayama, Mt. Kanetsukidô, Mure).

**Tribe Nemoraeni**

301. *Nemoraea japonica* (Baranov) ハネナガハリバエ  
 1♀, Mt. Jinmi, Kodama, 7.vii.1989; 1♂, Mt. Dôdaira, Ogawa, 3.vii.1998; 3♂, Mt. Kasa, Ogawa, 16.vi.2000; 1♂, Yotsuyama, Ogawa, 8.vi.1998, TN; 1♀, Kuroyama, Ogose, 27.vii.1981; 1♂, Irikawa, Ôtaki, 16.vi.1985; 1♂, Kamafuse Pass, Yorii, 18.vi.1978.
302. *Nemoraea pellucida* (Meigen) ササハラハリバエ  
 1♂, Hitsujiyama, Chichibu, 23.viii.1978; 1♀, Hongo, Okabe, 30.v.2001; 1♂, Green School, Ôtaki, 10.vii.1999, TN; 1♀, Irikawa, Ôtaki, 7.vii.1985; 1♂, Shôgen, Ôtaki, 3.viii.1985; 1♂1♀, Tochimoto, Ôtaki, 19.vii.2000, 25.ix.2001; 1♂, Kamafuse Pass, Yorii, 8.v.1983; 1♀, Mt. Kanetsukidô, Yorii, 7.x.2000.
303. *Nemoraea takanoi* (Baranov)  
 2♀, Mt. Jômine, Kamiizumi, 26.vii.1995; 1♀, Inasawa, Kodama, 12.ix.1990; 1♀, Kibe, Ogawa, 29.ix.1992; 1♀, Mt. Sengen, Ogawa, 30.ix.1997; 1♀, Irikawa, Ôtaki, 10.vii.2000, TN.

**Tribe Palpostomatini**

304. *Eutrixopsis javana* Townsend  
 1♀, Kawamata, Ôtaki, 6.vi.1985.
305. *Hamaxia incongrua* Walker キイロコガネヤドリバエ  
 1♂1♀, Kamafuse Pass, Yorii, 4.viii.1979.

**Tribe Polideini**

306. *Lypha dubia* (Fallén)  
 1♂, Jûniten, Kodama, 3.iv.1991; 1♂, Yotsuyama, Ogawa, 3.vii.1998.

**Tribe Siphonini**

307. *Actia jocularis* Mesnil  
 1♀, Hashidate River, Chichibu, 14.xi.1977.
308. *Actia pilipennis* (Fallén)  
 1♀, Irikawa, Ôtaki, 7.vii.1985; 1♂, Mikuni Pass, 1800 m, Ôtaki, 26.viii.1986.
309. *Actia tarsata* Richter  
 3♂6♀, Irikawa, Ôtaki, 4.viii.1980.
310. *Ceromya dorsigera* Herting  
 1♀, Ôfuchi, Minano, 27.v.1975. Tachi & Shima (2000: 139): Minano, Moroyama, Yorii.
311. *Ceromya helvola* Tachi & Shima  
 1♂, Mt. Kumakura, Chichibu, 27.viii.1986, TH.
312. *Ceromya kurashii* Tachi & Shima  
 1♀, Irikawa, Ôtaki, 4.viii.1980.
313. *Ceromya prominula* Tachi & Shima  
 Tachi & Shima (2000: 134): ♂ holotype, Tokorozawa, ex *Cyclophragma undans* (Walker) (Lasiocampidae) (BLKU).



314. *Ceromya silacea* (Meigen)  
1♀, Shiga, Ranzan, 8.vi.2002. Tachi & Shima (2000: 144): Minano, Tokorozawa, Urawa.
315. *Entomophaga vernalis* Tachi & Shima  
1♀, Sendai, Kōnan, 5.iv.1993; 1♀, Koya, Ogawa, 15.iv.1995, MU; 1♂1♀, Shiga, Ranzan, 20.iii.2003, MU; 1♀, Shōgunzawa, Ranzan, 19.iii.1998, MU.
316. *Peribaea fissicornis* (Strobl)  
1♂, Yotsuyama, Ogawa, 25.vii.1995.
317. \**Peribaea tibialis* (Robineau-Desvoidy)  
1♀, Takaushi, Kamiizumi, 10.x.1993, TN; 1♀, Mt. Jinmi, Kodama, 15.vii.1991; 1♀, Ikebara, Kurao, 25.v.1989, MA; 1♂, Daitsūin, Minano, 6.x.1977; 2♀, Kuriyama, Ogawa, 23.xi.1994; 2♀, Mt. Ôhira, Ranzan, 21.viii.1997, 12.v.2001; 1♂, Nagama, Satte, 15.v.1998; 1♀, Obusuma, Yorii, 6.x.1977.
318. *Peribaea ussuriensis* (Mesnil)  
1♂, Mt. Kanetsukidô, Yorii, 26.v.1985.
319. *Proceromyia macronychia* (Mesnil)  
1♂, Jûniten, Kodama, 3.iv.1990; 1♂, Kanetsukidô, Yorii, 8.iv.1978.
320. *Proceromyia pubiocularata* (Mesnil & Shima)  
1♂, Kanetsukidô, Yorii, 8.iv.1978.
321. *Siphona (Ceranthis) japonica* Mesnil  
Tachi & Shima (2005: 193): Yokose.
322. *Siphona (Ceranthis) sulfurea* (Mesnil)  
1♀, Obokawa, Yokose, 25.ix.1977. Tachi & Shima (2005: 197): Minano, Moroyama.
323. *Siphona (Siphona) lurida* Reinhard  
1♀, Hamadaira, Ôtaki, 4.iv.1991.
324. *Siphona (Siphona) paludosa* Mesnil  
2♂14♀: Arakawa (Shiroku), Fukaya (Hongo), Kodama (Jûniten), Kōnan (Mitsumoto, Sendai), Ogawa (Tomoo, Yotsuyama), Satte (Shimokawasaki), Ranzan (Kamagata, Tarômaru).
325. *Siphona (Siphona)* sp. 1  
1♂, Mt. Kasa, Ogawa, 1.iv.1999, MU.

#### Tribe Tachinini

326. \**Mikia japonica* (Baranov) タマヌキハリバエ  
4♂15♀: Chichibu (Hirogawara); Kamiizumi (Mt. Jômine, Yanô); Kodama (Mt. Jinmi); Ogano (Kurao, Mt. Futago); Ogawa (Kuriyama); Ogose; Ranzan (Mt. Ôhira, Tōyama); Yorii (Mt. Kamafuse).
327. *Peleteria propinqua* Zimin エウスグロハリバエ  
1♀, Shiba, Kōnan, 26.iii.1993; 1♀, Aoyama, Ogawa, 16.iv.1993, TN; 4♀, Mt. Sengen, Ogawa, 2.iv.1994, 1.v.1998; 1♀, Shimosato, Ogawa, 26.iii.1993; 2♀, Yotsuyama, Ogawa, 7.iv.1995; 1♂, Yukie, Ogawa, 1.v.1993, TN; 1♀, Mt. Ôhira, Ranzan, 3.iv.2001; 1♂, Mt. Kanetsukidô, Yorii, 2002.
328. *Peleteria semiglabra* (Zimin)  
1♂, Mitsumoto, Kōnan, 27.iii.1995; 1♂, Kamisuguro, Ogawa, 21.iii.1993, TN; 8♂2♀, Mt. Sengen, Ogawa, 22.iii.1993, 6.iv.1993, KT, TN; 3♂, Yotsuyama, Ogawa, 27.iii.1993, 7.iv.1995; 2♂, Sugaya, Ranzan, 14.iii.1994, TN, 24.iii.1999, MU; 3♂,

Tôyama, Ranzan, 1.iv.2000, KT; 4♂, Yoshida, Ranzan, 20.iii.2003, MU.

329. *Peleteria sphyricera* (Macquart) **New to Japan** (Fig. 23)

3♂, Oshikiri, Kônan, 24.viii, 15.ix.1993; 4♂, Nishifurusato Ogawa, 21.v.1998.

*Note.* This species is known in Japan only from the above specimens and a male from Kisokaida, Nagano.

330. *Peleteria* sp.

11♂23♀: Arakawa (Shiroku); Kodama (Jûniten); Hidaka (Mt. Hiwada); Kamikawa (Kanasana Shrine); Matsuyama (Monomiyama); Minano (Minoyama, Mt. Happu); Moroyama (Kitayama); Ogawa (Kasahara, Mt. Sengen, Takami, Yotsuyama Shrine); Ogose (Ogose High School); Ranzan (Hirono, Kashiwaginuma, Mt. Kanetukidô, Mt. Ôhira, Sugaya, Sugiyama),.

*Note.* This species appears to be undescribed, but needs more study. It has been collected also in Aomori, Tokyo and Fukuoka.

331. \**Tachina amurensis* (Zimin) ヨコジマオオハリバエ

= *Servillia amurensis* Zimin (Hara, 1978).

1♀, Shiga, Ranzan, 22.viii.2000.

332. *Tachina breviceps* (Zimin)

1♂, Mt. Jômine, Kamiizumi, 9.v.1994; 1♀, Tochimoto, Ôtaki, 2.vii.2001.

333. \**Tachina chaoi* Mesnil

= *Servillia chaoi* (Mesnil) (Hara, 1978).

3♂, Mt. Ômochi, Yokose, 25.vii.1977; 3♂, Ryokami, 1,2.viii.1975.

334. \**Tachina fera* (Linnaeus)

1♀, Shôgen Pass, Ôtaki, 3.viii.1985.

335. \**Tachina iota* Chao & Arnaud

= *Servillia minuta* Chao (Hara, 1978).

1♂6♀, Mikuni Pass, 1800 m, Ôtaki, 28–30.viii.1986, 12.viii.1994; 8♂, Shôgen Pass, Ôtaki, 2–3.viii.1985; 2♀, Tochimoto, Ôtaki, 11.x.2000.

336. \**Tachina luteola* (Coquillett) コガネオオハリバエ

= *Servillia luteola* Coquillett (Hara, 1978).

1♀, Mt. Kamafuse, Yorii, 4.x.2002.

337. \**Tachina micado* (Kirby) セスジハリバエ

= *Tachina mikado* Kirby (Hara, 1978, misspelled).

1♂, Mt. Jômine, Kamiizumi, 19.viii.1995; 1♀, Nihongi Pass, Minano, 8.x.2003; 1♀, Kasahara, Ogawa, 7.v.2004; 1♀, Kuriyama, Ogawa, 12.vi.1993; 2♀, Ogose, 22.v.1979, 3.vi.1981, TN; 1♀, Shôgen Pass, Ôtaki, 3.viii.1985; 1♀, Iwasaki, Yorii, 21.iv.1985; 1♂, Mt. Kanetsukidô, Yorii, 12.viii.1979.

338. \**Tachina stackelbergi* (Zimin)

= *Servillia stackelbergi* Zimin (Hara, 1978).

1♂, Nishione, Mt. Bukô, Chichibu, 2.x.1977; 1♂, Mt. Jômine, Kamiizumi, 11.vi.1994, 23.viii.2004; 1♀, Mt. Kasa, Ogawa, 13.vii.1993; 1♂, Mt. Sengen, Ogawa, 16.vi.1993; 2♂1♀, Ogose, 1.vi.1979, 17.vi.1981, TN; 1♀, Karisaka, Ôtaki, 30.vii.1976; 1♂1♀, Mikuni Pass, 1800 m, Ôtaki, 28–30.viii.1986; 1♂, Mt. Sanpô, Ôtaki, 12.vi.1980; 1♂, Furusato, Ranzan, 22.v.1998; 2♂, Shôgen, Sannose, 28.vii.1976; 1♂, Mt. Ômochi, Yokose, 25.vii.1977.

339. \**Tachina zaqu* Chao & Arnaud

= *Servillia basalis* Zimin (Hara, 1978).

1♂1♀, Kasayama Pass, Ogawa, 30.iv.1998; 3♂2♀, Irikawa, Ôtaki, 23.v.1986.

340. *Tachina zimini* (Chao)

6♂, Karisaka, Ôtaki, 30–31.vii.1976; 1♂, Mikuni Pass, 1800 m, Ôtaki, 3.viii.1974; 1♂, Summit, 2017 m, Mt. Kumotori, Ôtaki, 24.vii.1974.

341. *Tachina* sp.

1♂, Izumida, Chichibu, 9.iv.1991, YY; 1♂, Mt. Kanetsukidô, Yorii, 8.iv.1978.

*Note.* This species resembles the widespread Palearctic species *T. lurida* (Fabricius), but a positive identification is not possible at this time.

## Acknowledgements

We are grateful to Ms M. Arai, Messrs T. Nambu, M. Uchida, S. Uchida, H. Mitsui, C. Tamaki, I. Makibayashi, K. Toyoda, M. Hasegawa, T. Hayashi and Y. Yamaguchi, colleagues of the junior authors, for their help in collecting specimens. We are also much indebted to Dr J. E. O'Hara, Canadian National Insect Collection, Agriculture Canada, Ottawa, for his patience in reading through an early draft of this paper and giving valuable comments.

## Literature

- Cerretti, P. & H. Shima, 2011. World revision of *Dolichocolon* Brauer & Bergenstamm (Diptera: Tachinidae: Exoristinae: Goniini). *Zoological Journal of the Linnaean Society*, **162**: 544–584.
- Cerretti, P., A. D. Glullo, R. Romani, D. J. Inclan, D. Whitmore, F. D. Giovanni, M. Scalici & A. Minelli, 2015. First report of exocrine epithelial glands in oestroid flies: the tachinid sexual patches (Diptera: Oestroidea: Tachinidae). *Acta Zoologica*, **96**: 383–397.
- Crosskey, R. W., 1963. A systematic review of the Oriental and Australasian species of *Argyrophylax* Brauer and Bergenstamm, including the description of a new species from New Britain (Diptera: Tachinidae). *Annals and Magazine of Natural History*, Series 13, **6**: 1–16.
- Crosskey, R. W., 1976. A taxonomic conspectus of the Tachinidae (Diptera) of the Oriental Region. *Bulletin of the British Museum (Natural History)*, *Entomology*, Supplement 26, 357 pp.
- Hara, K., 1978. Diptera of Saitama. In *The fauna of Saitama Prefecture*. Saitama Prefecture Board of Education: 139–176 (in Japanese).
- Herting, B., 1975. Neue paläarktische Tachiniden (Diptera). *Stuttgarter Beiträge zur Naturkunde*, Serie A, **287**: 1–7.
- Herting, B., 1981. Typenrevisionen einiger paläarktischer Raupenfliegen (Dipt. Tachinidae) und Beschreibungen neuer Arten. *Stuttgarter Beiträge zur Naturkunde*, Serie A, **346**: 1–21.
- Mesnil, L. P., 1953. Nouveaux tachinaires d'Orient (2<sup>e</sup> partie). *Bulletin et Annales de la Société Entomologique Belgique*, **59**: 146–178.
- Mesnil, L. P., 1960. Larvaevorinae (Tachininae). In Lindner, E., ed. *Die Fliegen der paläarktischen Region*, **64g**: 561–608. E. Schwizerbart'sche Verlagsbuchhandlung, Stuttgart.
- O'Hara, J. E., 2013. History of of tachinid classification (Diptera, Tachinidae). *ZooKeys*, **316**: 1–34.
- O'Hara, J. E., H. Shima & C.-t. Zhang, 2009. Annotated catalogue of the Tachinidae (Insecta: Diptera) of China. *Zootaxa*, **2190**, 236 pp.
- Richter, V., 1988. New Palearctic genera and species of tachinids (Diptera, Tachinidae). *Systematika Nasekomikh i Kleshchei*, **70**: 202–212 (in Russian).
- Richter, V., 2004. Systematic and faunistic notes on tachinids of the Far East Russia (Diptera: Tachinidae). *Zoosystematica Rossica*, **12**: 276.
- Shima, H., 1968. Study on the Japanese *Calocarcelia* (Townsend) and *Eucarcelia* Baranov (Diptera: Tachinidae). *Journal of Faculty of Agriculture, Kyushu University*, **14**: 507–533.
- Shima, H., 1980a. A new species of the genus *Paratryphera* (Diptera, Tachinidae) parasitic on noctuid lichen feeders in Japan, with special reference to the tribe Ethillini. *Kontyû*, **48**: 6–14.
- Shima, H., 1980b. Study on the tribe Blondeliini from Japan (Diptera, Tachinidae). III. Descriptions of a new genus and two new species from Japan, Korea and Nepal, with note on *Drinomyia bicoloripes* (Mesnil). *Kontyû*, **48**: 259–266.
- Shima, H., 1981. A study of the genus *Phebellia* Robineau-Desvoidy from Japan (Diptera: Tachinidae). I. Descriptions of new species. *Bulletin of the Kitakyushu Museum of Natural History*, **3**: 53–67.
- Shima, H., 1982. A study of the genus *Phebellia* Robineau-Desvoidy from Japan (Diptera: Tachinidae). II. Redescriptions and species-grouping. *Bulletin of the Kitakyushu Museum of Natural History*, **4**: 57–75.
- Shima, H., 1984. Study on the tribe Blondeliini from Japan (Diptera, Tachinidae). V. The genera *Blondelia* Robineau-Desvoidy and *Compsilura* Bouché. *Kontyû*, **52**: 540–552.
- Shima, H., 1985a. Study on the tribe Blondeliini from Japan (Diptera, Tachinidae). VI. A revision of the genus *Uromedina* Townsend. *Kontyû*, **53**: 97–111.
- Shima, H., 1985b. The genus *Campylocheta* (Diptera: Tachinidae) from Japan. *Systematic Entomology*, **10**: 105–121.
- Shima, H., 1986. A systematic study of the genus *Linnaemya* Robineau-Desvoidy from Japan and the Oriental Region (Diptera: Tachinidae). *Sieboldia*, **5**: 1–96.
- Shima, H., 1987a. A revision of the genus *Isosturmia* Townsend (Diptera, Tachinidae). *Bulletin of the Kitakyushu Museum of Natural History*, **6**: 213–237.
- Shima, H., 1987b. A revision of the genus *Dexiomimops* Townsend (Diptera, Tachinidae). *Sieboldia*, Supplement: 83–96.

- Shima, H., 1988. Some remarkable new species of Tachinidae (Diptera) from Japan and the Indo-Australasian Region. *Bulletin of the Kitakyushu Museum of Natural History*, **8**: 1–37.
- Shima, H., 1991. Study on the tribe Blondeliini from Japan (Diptera, Tachinidae). VII. Genus *Oswaldia* Robineau-Desvoidy. *Japanese Journal of Entomology*, **59**: 67–86.
- Shima, H., 1996. A systematic study of the tribe Winthemiini from Japan (Diptera, Tachinidae). *Beiträge zur Entomologie*, **46**: 169–235.
- Shima, H., 1998. Taxonomic notes on Oriental Tachinidae (Insecta: Diptera). II. Genus *Thecocarcelia* Townsend. *Bulletin of the Graduate School of Social and Cultural Studies, Kyushu University*, **4**: 147–160.
- Shima, H., 2000. Tachinidae (Insecta, Diptera) of the Imperial Palace, Tokyo. *Memoirs of the National Science Museum, Tokyo*, **36**: 481–495 (in Japanese with English summary).
- Shima, H., 2006a. A host-parasite catalog of Tachinidae (Diptera) of Japan. *Makunagi/Acta Dipterologica*, Supplement 2, 171 pp.
- Shima, H., 2006b. Tachinidae (Insecta, Diptera) of the Imperial Palace, Tokyo (Addenda and corrigenda). *Memoirs of the National Science Museum, Tokyo*, **43**: 279–289 (in Japanese with English summary).
- Shima, H., 2010. Addenda and corrigenda to “A Host-Parasite Catalog of Tachinidae (Diptera) of Japan” (Shima, 2006). *Makunagi/Acta Dipterologica*, **22**: 7–12.
- Shima, H., 2014. Family Tachinidae. In Nakamura, T., T. Saigusa, & M. Suwa, eds. *Catalogue of the insects of Japan*. Volume 8. Diptera. Part 2. Brachycera Schizophora: 832–882. Toukashobo, Fukuoka.
- Shima, H., 2015. *Melastrongygaster*, a new genus of the tribe Strongygastrini (Diptera: Tachinidae), with five new species from Asia. *Zootaxa*, **3904**: 427–445.
- Shima, H., C.-m. Chao & W.-x. Zhang, 1992. The genus *Winthemia* (Diptera, Tachinidae) from Yunnan Province, China. *Japanese Journal of Entomology*, **60**: 207–228.
- Shima, H. & S. Shinonaga, 2014. Tachinid fauna (Insecta, Diptera, Tachinidae) in the Imperial Palace, Tokyo. *Memoirs of the National Science Museum, Tokyo*, **50**: 447–457 (in Japanese with English summary).
- Sun, X. S. & S. A. Marshall, 2003. Systematics of *Phasia* Latreille (Diptera: Tachinidae). *Zootaxa*, **276**, 227 pp.
- Tachi, T., 2013a. Systematic study of the genera *Phryno* Robineau-Desvoidy and *Botria* Rondani in the Palearctic Region, with discussions of their phylogenetic positions (Diptera, Tachinidae). *Zootaxa*, **3609**: 361–391.
- Tachi, T., 2013b. A new species of the genus *Trichoformosomyia* Townsend from Malaysia (Diptera: Tachinidae). *Zootaxa*, **3702**: 61–70.
- Tachi, T. & H. Shima, 2000. Taxonomic study of the genus *Ceromya* Robineau-Desvoidy of Japan (Diptera: Tachinidae). *Beiträge zur Entomologie*, **50**: 129–150.
- Tachi, T. & H. Shima, 2005. Revision of the subgenus *Ceranthia* Robineau-Desvoidy of the genus *Siphona* Meigen of Japan (Diptera: Tachinidae). *Entomological Science*, **8**: 189–200.
- Tachi, T. & H. Shima, 2006. Systematic study of the genus *Phorinia* Robineau-Desvoidy of the Palearctic, Oriental and Oceanian regions (Diptera: Tachinidae). *Invertebrate Systematics*, **20**: 255–287.
- Tachi, T. & H. Shima, 2008. Phylogenetic relationships of subgenera of the genus *Exorista* Meigen, with a revision of the Japanese species (Diptera: Tachinidae). *Entomological Science*, **11**: 419–448.
- Tschorsnig, H.P., 1985. Taxonomie forstlich wichtiger Parasiten: Untersuchungen zur Struktur des männlichen Postabdomens der Raupenfliegen (Diptera, Tachinidae). *Stuttgarter Beiträge zur Naturkunde, Serie A (Biologie)*, **383**: 137 pp.
- Zhang, C.-t., H. Shima, Q. Wang & H.-P. Tschorsnig, 2015. A review of the genus *Billaea* Robineau-Desvoidy of the eastern Palearctic and Oriental regions (Diptera: Tachinidae). *Zootaxa*, **3949**: 1–40.

Received October 26, 2015; accepted November 2, 2015

## 埼玉県産ヤドリバエ科（昆虫綱：ハエ目）

寫 洪<sup>1)</sup>・原 勝司<sup>2)</sup>

<sup>1)</sup>九州大学総合研究博物館・<sup>2)</sup>埼玉県大里郡寄居町桜沢327-1

**要旨：**ヤドリバエ科のハエは、その全てが他の昆虫等の内部寄生者として成長するため、地域昆虫相の評価の指標として、また農林害虫の生物的防除への利用の可能性が考えられる重要な一群である。埼玉県では1970年以来、おもに著者の一人（原）によって継続的にヤドリバエの調査・採集がおこなわれてきた。その収集品の多くが本年（2015）九州大学総合研究博物館に寄贈されたのを機として、埼玉県のヤドリバエ科の目録を作成した。これは1979年に発表された「埼玉県の双翅類（原，1979）」の訂正、学名の変更などとともに、多くの追加の記録を含むものである。また、これまでに埼玉県から記載、記録された種や未同定または未記載の種も同時に記録している。

埼玉県のヤドリバエ科は総数341種にのぼり、これは日本から記録された同科（日本昆虫目録，Shima, 2014）のほぼ5分の3に相当する。この報告のなかで以下の17種は、日本から初めて記録されるものである：*Billaea brevicauda* Zhang & Shima, *B. kolomietzi* (Mesnil), *Istocheta rufipes* (Villeneuve) *Carcelia townsendi* Crosskey, *C. delicatula* Mesnil, *Catagonia aberrans* (Mesnil), *Senometopia longiepandriuma* (Chao & Liang), *S. mimoexcisa* (Chao & Liang), *Blepharipa tibialis* (Chao), *Onychogonia flaviceps* (Zetterstedt), *Pales peregrina* Herting, *Cylindromyia arator* Reinhard, *Hemyda hertingi* Ziegler & Shima, *Perigymnosoma globulum* Villeneuve, *Panzeria vagans* (Meigen), *Glaurocara lucidula* Richter, *Peleteria sphyricera* (Macquaert). また以下の5属は、種名の決定には至っていないが、これまで日本からはまったく記録されたことがない属である：*Admontia*, *Ligeria*, *Medinodexia*, *Hapalioloemus*, *Phytomyptera*. なお、日本昆虫目録（Shima, 2014）に誤って採録されなかった2種（*Exorista* (*Adenia*) *tubigera* Mesnil, *Exorista* (*Spixomyia*) *lepis* Chao）をあらためて記録した。