

Key to families, subfamilies, tribes and genera
of the superfamily Curculionoidea of Japan
excluding Scolytidae, Platypodidae and
Cossoninae : Comparative morphology, phylogeny
and systematics of the superfamily
Curculionoidea of Japan. III

Morimoto, Katsura
Entomological Laboratory, Department of Agriculture, Kyushu University

<https://doi.org/10.5109/22693>

出版情報 : 九州大学大学院農学研究院紀要. 12 (1), pp.21-66, 1962-06. Kyushu University
バージョン :
権利関係 :

Key to families, subfamilies, tribes and genera of the
superfamily Curculionoidea of Japan excluding Scolytidae,
Platypodidae and Cossoninae

(Comparative morphology, phylogeny and systematics of the
superfamily Curculionoidea of Japan. III)

Katsura MORIMOTO

In this paper a key to families, subfamilies, tribes and genera of the superfamily Curculionoidea excluding Scolytidae, Platypodidae and Cossoninae is given. Scolytidae and Platypodidae have been studied by Dr. Jozo Murayama and Mr. Akira Nobuchi, and the revision of the subfamily Cossoninae will be published before long by Dr. Masayasu Konishi.

I acknowledge my indebtedness to the late Prof. Teiso Esaki, Prof. Keizō Yasumatsu and Prof. Yoshihiro Hirashima for their kind guidance in the course of the present study.

To Prof. Toichi Uchida and Prof. Chihisa Watanabe, of Hokkaido University, I am much indebted to the examination of the type specimens described by Dr. Hiromichi Kōno.

Key to families of Curculionoidea of Japan.

1. Maxillary palpi 4-segmented. Maxillary lacinia distinct. Mandibles and maxillae move in horizontal plane. Penis with the dorsal and ventral plates of the same size. Cap-piece of tegmen not bilobed, large. Antennae always straight. Preoral cavity divided by a transverse wall or narrow bridge (excepting Rhynchitinae). Abdomen with the 3rd-6th sternite similarly articulated to each other, the suture between 6th and 7th sternites deeply inflected. Ovary with 4-5 pairs of ovarioles2
- 1'. Maxillary palpi 3-segmented. Maxillary lacinia very often indistinct. Mandibles move more or less obliquely. Penis with the dorsal plate much narrower than the ventral one or the dorsal

- plate absent. Cap-piece of tegmen bilobed or vestigial. Antennae often geniculate. Preoral cavity without a transverse wall or bridge. Ovary with 1—2 pairs of ovarioles3
2. Labrum distinct and separated. Preoral cavity completely divided by a transverse wall. Labial and maxillary palpi normal, flexible. Tentorial bridge incomplete, posterior arms reduced to a pair of small processes and originated from postoccipital suture. Elytral epipleura invisible from sides. Testis with 1-2 pairs of accessory glands. Ovipositor with styli strongly sclerotized and toothed, coxites deeply inflected inwards from above. Female with 9th abdominal tergiteAnthribidae
- 2'. Labrum indistinguishable. Labial and maxillary palpi rigid, inflexible. Preoral cavity with a transverse bridge connecting the pregenal areas (Attelabinae) or the bridge absent (Rhynchitinae). Tentorium with the posterior arms broad, originated from the gular suture and ventral parts of postoccipital suture. Elytral epipleura freely visible from sides. Testis with 3 or more paired accessory glands. Ovipositor normal or vestigial.....Attelabidae
3. Postcoila shallow, located on the anterior margin of postgenal area, into which the ball of postartis of mandible fits not strongly. Maxillae move nearly in horizontal plane. Head never produced into a rostrum or with a very short rostrum. Tentorium with the posterior arm very broad, originated from postoccipital, gular and hypostomal sutures. Ovipositor vestigial4
- 3'. Postcoila deep, located on the postgenal arm a little behind the anterior margin, into which the ball of postartis of mandible fits strongly. Maxillae move vertically. Head more or less produced into a rostrum. Tentorium with the posterior arms originated from postoccipital and gular sutures. Ovipositor always present 5
4. Anterior tarsi with the 1st segment longer than the 3 followings taken together. Abdomen with the 3rd—7th segments freely articulated to each other, 9th sternite absent in male. Penis without apophysis. Maxillary lacinia distinctPlatypodidae
- 4'. Tarsi with 1st segment shorter than the 3 followings taken together. abdomen with the 3rd and 4th sternites connate, 5th—7th segments similarly articulated to each other, 9th sternite present in male. Penis with a pair of apophysis. Maxillary lacinia indistinct Scolytidae
5. Prementum normal, freely visible from ventral side. Antennae with club segmented, closely pubescent. Penis with the ventral plate not incised. Posterior part of ventriculus furnished with several gastric caecae. Pygidium formed of 8th tergite in male 6

- 5'. Prementum very small, deeply retracted into the oral cavity and invisible from ventral side. Penis with the ventral plate incised. Ventriculus furnished with short gastric caecae on entire external surface. Antennae with the 1st segment of club glossy, the other segment of club rigid and closely pubescent, funicle 4—6 segmented. Pygidium formed of 7th tergite in maleRhynchophoridae
6. Proventriculus not developed, with 8 or 16 rows of setae. Penis with dorsal and ventral plates, cap-piece of tegmen large, bilobed, often articulated to the basal piece, apical part of cap-piece setoseBrenthidae
- 6'. Proventriculus well developed, with 8 pairs of the row of blade-like plates. Penis with the ventral plate only, dorsal plate absent, cap-piece of tegmen less developed, often absentCurculionidae

Family Anthribidae

As many genera of the Anthribidae remain undissected, I can not answer the question of the phylogeny at present. Following key is given as a preliminary step towards a revision of the Anthribidae from Japan.

Key to the subfamilies of the Anthribidae.

1. Antennae inserted on the dorsal surface of rostrum or head
.....Choraginae
- 1'. Antennae inserted on the lateral surface of rostrum ...Anthribinae

Subfamily Choraginae

Key to genera.

1. Dorsal prothoracic carina curving forwards to the sides and distant from the base at the sides5
- 1'. Dorsal prothoracic carina reaching the sides close to the base and there conspicuously angulated and with a distinct lateral carina2
2. Eyes rounded, the upper edges not closer together than the lower4
- 2'. Eyes elongate-oval, the upper ends closer to each other than the lower3
3. Male pygidium with a longitudinal keel, female pygidium with a pair of triangular projections laterally*Citacalus* Johraku
- 3'. Pygidium simple*Choragus* Kirby
4. First segment of front tarsi longer than the followings taken together. Pygidium nearly as long as wide...*Araccerus* Schönherr
- 4'. First segment of front tarsi shorter than the followings taken

- together. Pygidium slender, projected somewhat downwards in a beak-like manner *Deropygus* Sharp
5. Antennae very long, filiform, much longer than body in female and 4-5 times as long as body in male..... *Apolecta* Pascoe
- 5'. Antennae shorter than body. Elytra with humeri a little narrower than pronotum and rounded *Notioxenus* Wollaston

Subfamily Anthribinae

Key to genera.

1. Dorsal prothoracic carina basal2
- 1'. Dorsal prothoracic carina antebasal8
2. Rostrum strongly carinate on each side and the carinae contiguous with eyes respectively. Rostrum very short, rapidly narrowing anteriorly3
- 2'. Rostrum parallel-sided, not carinate on each side4
3. Eyes convex, suboval. Lateral carinae of rostrum reaching the anterior margin of eyes respectively. Frons between eyes nearly as broad as the apex of rostrum..... *Anthribus* Forster
- 3'. Eyes more or less convergent on frons. Lateral carinae of rostrum prolonged posteriorly to the middle of eyes respectively. Frons between eyes narrower than rostrum *Paramesus* Fahraeus
4. Fourth segment of antennae abnormally large in male. Antennae inserted on the dorso-lateral surface of rostrum. Rostrum extremely short. Antennal scrobes contiguous with eyes. Body cylindrical *Ozolomerus* Perroud
- 4'. Antennae normal5
5. Eyes convex, suboval. Postmentum strongly constricted towards the base *Euparius* Schönherr
- 5'. Eyes emarginate. Postmentum not strongly constricted6
6. Antennal scrobes sulciform, prolonged downwards. Antennae short, widened apically from the 4th segment. Body parallel-sided *Basitropis* Jekel
- 6'. Antennal scrobes foveiform. Antennae longer than body in male, normally clubbed7
7. Antennae inserted on the dorso-lateral surface of rostrum, antennal scrobes contiguous with eyes. Eyes very strongly emarginate. Rostrum extremely short *Phlocobius* Schönherr
- 7'. Antennae inserted on the lateral surface of rostrum, antennal scrobes separated from eyes. Eyes strongly emarginate. Rostrum, as long as wide *Platystomus* Schneider
8. Antennal scrobes sulciform, convergent to each other on the ventral surface of rostrum9
- 8'. Antennal scrobes foveiform, lateral11

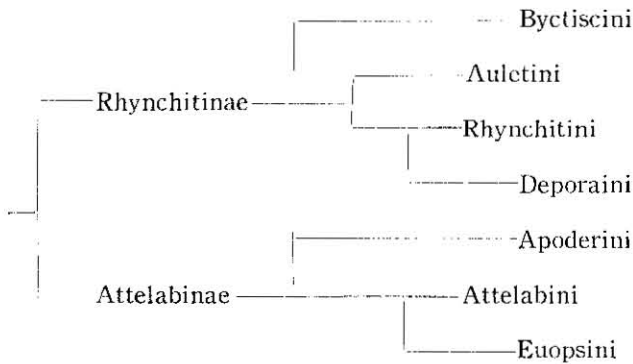
9. Rostrum perpendicular to the axis of body. Dorsal prothoracic carina curving forwards on each side. Lateral prothoracic carina absent. Antennal scrobes shallower *Blabirhinus* Sharp
- 9'. Rostrum oblique to the axis of body. Dorsal prothoracic carina angulate on each side. Lateral prothoracic carina present. Antennal scrobes deeper10
10. Lateral prothoracic carina prolonged anteriorly from the base to the middle. Dorsal prothoracic carina subparallel to the base of pronotum. Third tarsal segment normal. Body elongate-oval.....
..... *Asemorhinus* Sharp
- 10'. Lateral prothoracic carina developed in entire length of pronotum. Dorsal prothoracic carina curving forwards to the sides. Third tarsal segment small, retracted into the anterior cavity of the 2nd segment. Body parallel-sided *Dendrotrogus* Jekel
11. Eyes emarginate. Antennal scrobes lateral or dorso-lateral, partly visible from above.....12
- 11'. Eyes round14
12. Antennae filiform, very slender, 3-4 times as long as body in male and much longer than body in female. Small species
..... *Exillis* Pascoe
- 12'. Antennae very robust, shorter than body. Large species13
13. Pronotum with a horseshore-shaped deep depression
..... *Stiboderes* Schönherr
- 13'. Pronotum simple *Xylina* Imhoff
14. Antennal scrobes latero-dorsal. Rostrum suddenly dilated before the middle, with a deep median longitudinal sulcus. Male antennae 2-3 times as long as body. Large species
..... *Mecocerus* Schönherr
- 14'. Antennal scrobes latero-ventral, invisible from above15
15. Dorsal prothoracic carina close to the posterior margin, bisinuate, each side of the carina very close to the hind angle of pronotum, lateral carina very short. Hind angle of pronotum narrower than 90°. Small species..... *Uncifer* Jordan
- 15'. Hind angle of pronotum nearly rectangular. Dorsal prothoracic carina more or less remote from the posterior margin16
16. Prothorax strongly narrowed behind dorsal carina so as to leave a deep excision between it and elytra. First segment of front tarsi a little longer than the followings taken together17
- 16'. Prothorax normally narrowed behind dorsal carina19
17. Each side of male head expanded into a process bearing eye. Female frons between eyes as broad as rostrum.....
..... *Zygaenodes* Pascoe
- 17'. Frons between eyes much narrower than rostrum18
18. Elytra without nodules. Tarsi with the 1st segment slender, nearly

- as long as the remaining segments taken together
 *Rhaphitropis* Reitter
- 18'. Elytra nodulosus. Tarsi broader, 1st segment a little shorter than
 the remaining segments taken together
 *Directarius* Jordan, *Dissoleucas* Jordan
19. Rostrum separated from head by a transverse sulcus on the ventral
 surface, perpendicular to the axis of body.....*Tropideres* Schönherr
- 19'. Rostrum oblique to the axis of body, not separated from head by
 a sulcus20
20. Eyes lateral, strongly convex. Frons between eyes a little narrower
 than rostrum. Antennal club normal..... *Autotropis* Jordan
- 20'. Eyes weakly convex, more or less convergent to each other on
 frons.....21
21. Dorsal prothoracic carina curved anteriorly on each side. Antennae
 with club slender, loosely articulated*Habrissus* Pascoe
- 21'. Dorsal prothoracic carina rectangular on each side22
22. Dorsal prothoracic carina close to the base. Antennae with club
 slender, loosely articulated. Rostrum weakly laminate on each
 side above antennal scrobe, undersurface simple ...*Hypseus* Pascoe
- 22'. Dorsal prothoracic carina remote from the base. Rostrum strongly
 laminate on each side above antennal scrobe, with a pair of foveae
 near the lower end of antennal scrobe. Antennae with club
 normal..... *Ulorhinus* Sharp

Family Attelabidae

Family Attelabidae was divided by many authorities such as Voss, Ter-Minasyan, Kôno, etc., into three subfamilies, Attelabinae, Apoderinae and Rhynchitinae. I came to the similar conclusion that it may be better to divide the Attelabidae into two subfamilies, Attelabinae and Rhynchitinae from the point of comparative morphology as already be pointed out by Crowson. Apoderinae auct. and Attelabinae auct. are very close to each other in many characters excepting the constricted head and the shape of tentorium. Euopsini is a distinct tribe and separable from Apoderini and Attelabini by the large eyes and absence of labial palpi. Attelabini should be inferred the most primitive tribe among Attelabinae from the structures of prementum. Apoderini (Apoderinae of many authors) is very uniform in various characters. Subtribe Eugnamptina was treated by Voss under the tribe Rhynchitini and Ter-Minasyan transfered it into the tribe Deporaini. I agree with the treatment of Ter-Minasyan as noted in the following key.

The relationship of the tribes of Attelabidae may be illustrated as follows :



Key to subfamilies.

1. Tibiae mucronate in both sexes, uncinuate in male, front tibiae serrate on the ventral margin. Claws connate. Mandibles short, pincer-shaped. Abdomen with the 1st-4th visible sternites conglutinate together, 1st-6th tergites conglutinate together. Female genital segment (8th sternite) without an apophysis in general. Labial palpi inserted into cavities on the ventral surface of prementum, 2- or one-segmented or often palpi absent. Ovipositor not developed, styli always absent, coxites small or absent gonopore not opening between coxites. Lateral arms of metendosternite rounded and flat. Preoral cavity divided by a transverse bridge Attelabinae
- 1'. Tibiae neither uncinuate nor mucronate, not serrate on the ventral margin. Claws free. Mandibles flat, toothed on the inner and outer sides. Abdomen with 1st and 2nd visible sternites fused, the remaining sternites and tergites freely articulated. Female genital segment (8th sternite) always with an apophysis. Labial palpi inserted into the anterior margin of prementum, 3- or rarely 2-segmented, postmentum protruding anteriorly on each side. Ovipositor developed, gonopore opening between coxites. Lateral arms of metendosternite more or less pointed and trough-shaped. Preoral cavity without a transverse bridge Rhynchitinae

Subfamily Attelabinae

Key to tribes.

1. Head with temples very long, strongly constricted at the base. Elytra without scutellar striae. Posterior arms of tentorium originated from the gular suture, posterior tentorial pits far apart from the postocciput. Prementum with a pair of projections near the anterior margin. Labial palpi one-segmented Apoderini

- 1'. Head with temples shorter, not constricted behind eyes. Each elytra with a scutellar stria. Posterior arms of tentorium arisen from gular and postoccipital sutures2
2. Eyes strongly approximated on frons. Anterior margin of prementum notched twice and sharply toothed thrice. Labial palpi absent.....Euopsini
- 2'. Eyes lateral, broadly separated. Anterior margin of prementum simple. Labial palpi two- or one-segmented.....Attelabini

Tribe Apoderini

Key to subtribes and genera.

1. Head short, strongly constricted at the base. Elytra with humeri more or less pointed outwardsSubtribe Hoplapoderina2
- 1'. Head longer, moderately narrowed from eyes towards the neck. Elytra with humeri rounded4
2. Elytron with at least 3 costae, striae not weakened posteriorly...3
- 2'. Elytron with a lateral costa, with a conical median knob, striae shallowed behind*Phymatopoderus* Voss
3. Abdominal lobe absent. Elytron with at least 5 spurs or knobs *Hoplapoderus* Jekel
- 3'. Abdominal lobe present. Elytron with at most 4 spurs or knobs. *Paroplapoderus* Voss
4. Male head without a neck regionSubtribe Apoderina..... *Apoderus* Olivier
- 4'. Male head with a long neck region. ...Subtribe Trachelophorina5
5. Abdominal lobe absent. Male head with a distinct neck region *Cycnotrachelus* Voss
- 5'. Abdominal lobes present6
6. Each of 2nd—6th funicular segments of male antennae suddenly swollen at the apex. Male head with a long neck-region *Paratrachelophorus* Voss
- 6'. Funicular segments each gradually widened towards the apex ...7
7. Male head with a short neck-region. Terminal segment of antennae spiniform *Paracentrocorynus* Voss
- 7'. Male head with a longer neck-region. Terminal segment of antennae not slender*Paracycnotrachelus* Voss

Tribe Euopsini

- Unique genus.....*Euops* Schönherr

Tribe Attelabini

Key to genera.

1. Elytra with the bases strongly produced anteriorly beside scutellum. Eyes less convex *Phialodes* Roelofs
- 1'. Elytra truncate at the base 2
2. Derm closely with hairs *Himatolabus* Jekel
- 2'. Derm naked 3
3. Antennal club oval, distinctly separable from funicle. Derm reddish *Henicolabus* Voss
- 3'. Antennal club slender, indistinguishable from funicle in general. Derm steelblue *Isolabus* Voss

Subfamily Rhynchitinae

Key to tribes.

1. Elytra almost conjointly rounded at the apex, more or less irregularly punctured, gently inflected at the basal extremity. Pygidium almost concealed. Tibiae subcylindrical, not costate on the dorsal margin. Ovipositor with styli absent, coxite simple. Tergite of abdomen without lateral sclerites, spiracles on membrane. Auletini
- 1'. Elytra rounded at the apex, more or less regularly punctured striate. Tibiae with the dorsal margin often costate. Pygidium exposed 2
2. Metacoxae separated from metepisterna by abdominal lobes. Pygidium entirely exposed. Abdominal sternite and pygidium costate along the margin of elytra in repose. Elytra inflected perpendicularly at the basal extremity. Rostrum rather robust. Male prothorax adorned with a spur on each side. Tibiae less strongly costate on the dorsal margin or not costate. Ovipositor with styli absent, coxites simple. Tergite of abdomen with lateral sclerites Byctiscini
- 2'. Metacoxae reaching metepisterna, abdominal lobes absent. Dorsal costa of tibiae distinct in general, often finely serrate 3
3. Head strongly constricted behind eyes. Elytra slightly inflected at the basal extremity. Rostrum more or less flattened and widened towards the apex Deporaini
- 3'. Head rarely constricted behind eyes. Elytra inflected perpendicularly at the basal extremity. Rostrum slenderer. Pygidium partly exposed. Ovipositor with styli absent. Tergite of abdomen with lateral sclerites Rhynchitini

Tribe Auletini

..... *Auletobius* Desbrochers

Tribe Byctiscini

Key to genera.

1. Tibiae not costate. Scutellum more than three times as broad as long.....*Aspidobyctiscus* Schilsky
- 1'. Tibiae costate on the dorsal margin. Scutellum at most twice as broad as long*Byctiscus* Thomson

Tribe Deporaini

Key to subtribes and genera.

1. Each elytron with a scutellar stria2
- 1'. Elytra without scutellar striae. Rostrum longer than wide. Antennal club normal. Pygidium and a part of 6th tergite exposed. Ovipositor with styli, coxite subdivided into dorsal and ventral piece. Abdominal tergite with lateral sclerites.....Subtribe Deporaina.....4
2. Rostrum short, robust, as long as wide. Pygidium and a part of 6th tergite exposed. Antennae robust, club oblong oval. Eyes similar in both sexes in size. Ovipositor with styli absent, coxite undivided. Abdominal tergite with lateral sclerites Subtribe Chonostropheina nov.....*Chonostropheus* Prell
- 2'. Rostrum longer. Antennae slender, club loosely segmented. Pygidium exposed. Male eyes much larger than those of female. Abdominal tergite without lateral sclerites, spiracles lying on membrane. Ovipositor with developed styli Subtribe Eugnamptina3
3. Head slightly constricted behind eyes. Tibiae widened from the base towards the apex. Larger species*Aderorhinus* Sharp
- 3'. Head strongly constricted behind eyes. Front tibiae parallel-sided.*Eugnamptus* Schönherr
4. Pygidium and parts of 5th and 6th tergites of abdomen exposed *Deporaus* Leach
- 4'. Pygidium and a part of 6th tergite exposed5
5. Pronotum slightly rounded at the sides. Body slender. Elytra punctured from the bases to the apices in the same strength *Depasophilus* Voss
- 5'. Pronotum strongly rounded at the side. Body subpyriform.....6
6. Eyes strongly prominent forwards. Male rostrum short and bearing a pair of tongue-shaped projections below the antennal insertion. Female rostrum relatively longer, without a basal hair tuft *Paradeporaus* Kôno
- 6'. Eyes prominent laterally. Female rostrum with a hair tuft at the base. Male rostrum rather long, without projection below the antennal insertion.....*Chokkirius* Kôno

Tribe Rhynchitini

Key to genera.

1. Each elytron with a scutellar stria2
- 1'. Elytra without scutellar striae4
2. Rostrum rather short, straight. Head more or less constricted behind eyes.....*Lasiorrhynchites* Lacordaire
- 2'. Rostrum slender, more or less curved. Head not constricted behind eyes3
3. Tibiae indistinctly costate. Body slenderer*Pselaphorrhynchites* Schilsky
- 3'. Tibiae distinctly costate on the dorsal margin, the costa finely serrate*Merhynchites* Sharp
4. Rostrum very slender. Antennae slender, club loosely segmented, each segment of club much longer than wide. Male prothorax adorned with a spur on each side. Derm mottled with recumbent hairs and clothed further with long erect setae*Mechoris* Billberg
- 4'. Each segment of antennal club not longer than wide. Rostrum and antennae less slenderer5
5. Male prothorax armed with a spur on each side. Terminal segment of tarsi much longer than the 1st. Elytra with punctures not deeply striate.....*Rhynchites* Schneider
- 5'. Male prothorax unarmed. Terminal segment of tarsi at most slightly longer than the 1st. Elytra punctured striate.....*Involvulus* Seidlitz

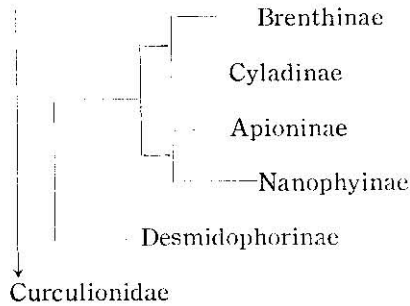
Family Brenthididae

In 1955 Crowson established a family Apionidae including Apioninae, Nanophyinae, Eurhynchinae (including *Cylas*) and Ithyocerinae. Cyladinae may be separable from the Eurhynchinae by the position and number of the segment of labial palpi. As already be noted, Cyladinae has a close relation to Brenthididae auct. than to Apionidae auct. in the structures of labium and prothorax. Brenthididae auct. is very conspicuous in the straight and not or slightly clubbed antennae. The other characters studied are, however, similar to *Cylas* and *Apion*. From these points it may be better to combine the Brenthididae and Apionidae into a family.

Desmidophorus has been treated under the subtribe Ithyporina of the subfamily Cryptorrhynchinae basing on the sulcate prosternum and the general shape of body, but differs from the subfamily by the mandibles bearing a deciduous cusp, dentate tibiae on the external margin, developed and closely haired corbel of tibiae, Brenthid-Apionid-typed

aedeagus and proventriculus. From these point I would like to transfer the *Desmidophorus* from the Cryptorrhynchinae to Brentthidae of new sense tentatively until the larvae become clear.

The relationship of the subfamilies of Brentthidae could be illustrated as follows.



Key to subfamilies.

1. Trochanters large, femora attached to their apex. Small species, not over 4.5 mm. Antennal club compact2
- 1'. Trochanters small, triangular. Larger species3
2. Antennae not geniculate. Labial palpi one-segmented. Body pear-shaped, broadest at or behind the middle of elytra. Tarsal claws separated.....Apioninae
- 2'. Antennae geniculate. Labial palpi 2-segmented. Body oval, broadest at the shoulders. Tarsal claws connate.....Nanophyinae
3. Pygidium concealed, not striate. Visible segment of abdomen not entirely flat. Rostrum longer than wide4
- 3'. Pygidium exposed, with a longitudinal median stria. Visible segments of abdomen flat. Claws separated, bifide. Rostrum a little longer than wide, subquadrate in cross-section. Antennae straight. Front coxae contiguous. Labial palpi 3-segmented...(Ithycerinae)
4. Antennae geniculate. Front coxae separated. Prosternum before coxae deeply canaliculate. Mandible with a deciduous cusp, leaving a scar. Body oval, closely covered with scales. Labial palpi 3-segmented.....Desmidophorinae, subfam. nov.
- 4'. Antennae straight. Prosternum flat. Mandible normal. Prothorax constricted near the posterior margin. Body slender, glossy. Labial palpi inserted into deep pits5
5. Front coxae contiguous. Mesepimera concealed under elytra. Claws connate at the baseCyladinae
- 5'. Front coxae separated. Mesepimera exposed. Claws separated ...
..... Brentthinae

Subfamily Brentthinae

Key to tribes.

1. Prothorax more or less compressed a little behind the anterior margin. Rostrum short, small, not sexually dimorphic Calodromini
- 1'. Prothorax not compressed a little behind the anterior margin ...2
2. Inside of front tibiae strongly unidentateStereodermini
- 2'. Front tibiae unarmed3
3. Smaller species, rarely over 10 mm in length, femora unarmed in general.....Trachelizini
- 3'. Larger species; femora dentate in general. Male antennae inserted into the middle of rostrum. Elytra dark-coloured with yellowish spotsArrhenodini

Tribe Calodromini

Key to genera.

1. Hind tibiae much shorter than tarsi, hind femora much exceeding posteriorly behind the apex of elytra; antennae inserted on the latero-ventral surface of rostrum.....*Cyphagogus* Parry
- 1'. Hind legs normal; antennae inserted on the latero-dorsal surface of rostrum2
2. Underside of metarostrum semicircularly depressed *Sparganophasma* Kleine
- 2'. Underside of rostrum not depressed. Second interval of elytron not separated.....*Asaphepterum* Kleine

Tribe Stereodermini

Key to genera.

1. Antennae slender and long, often longer than body; head more or less sulcate; underside of rostrum with a row of small depressions on each side, inside of the depression velvety *Jonthocerus* Lacordaire
- 1'. Antennae shorter and robust, not clubbed; front tibiae distinctly dentate.....*Cerobates* Schönherr

Tribe Trachelizini

Key to genera.

1. Pronotum sulcate2
- 1'. Pronotum not sulcate; posterior margin of head toothed; elytra normally punctured striate.....*Miolispa* Pascoe
2. Each elytron with 2 costate intervals.....*Hypotrachelizus* Kleine
- 2'. Elytra normally punctured striate; front femora armed each with a small tooth.....*Higonius* Lewis

Tribe Arrhenodini

Key to genera.

1. Male rostrum as broad as head, short, robust, female prorostrum cylindrical, straight *Baryrhynchus* Lacordaire
- 1'. Male rostrum similar to that of female, much narrower than head, slender *Pseudorychodes* Senna

Subfamily Cyladinae

..... *Cylas* Latreille

Subfamily Apioninae

..... *Apion* Herbst

Subfamily Nanophyinae

..... *Nanophyes* Schönherr

Subfamily Desmidophorinae

..... *Desmidophorus* Schönherr

Family Curculionidae

Curculionidae was divided into two major groups, Curculionidae adelognathi and Curculionidae phanerognathi by Lacordaire, 1863, Marshall, 1916, Reitter, 1916, etc. basing on the structures of mouth organs and the length of rostrum. Leconte and Horn, 1876, divided the Curculionidae into "Byrsopidae, Otiorrhynchidae and Curculionidae". In 1939 van Emden pointed out that Curculionidae could fundamentally be separable into two major groups on larval characters.

In the course of the present study I made an effort to find out the relationship of the subfamilies from the comparative morphology of adult. Following subfamilies could be said primitive from the structures of adult:

Sitoninae: Maxillary lacinia and galea separated, while the other subfamilies they are connate and forming mola. This subfamily may also be separable from the adelognathous Curculionidae by the short or vestigial ovipositor and normal mandibles.

Hyperinae: Hyperinae auct. and Notarinae auct. can not be separable by adult. Aedeagus of *Notaris* is of a Brenthid-type.

Ceuthorrhynchinae, Barinae, Magdalinae, some Cryptorrhynchinae: Abdominal spiracles on sclerites.

Mecyslobinae: Abdominal spiracles on sclerites, proventriculus less developed.

From the larval characters, *Rhynchaenus*, *Rhamphus*, *Mecinus* and *Orobitis* were classified into primitive groups by van Emden.

Cleoninae is greatly different from the other phaneroognathous Curculionidae in the position and number of the segments of labial palpi and penis.

Carciliinae, Pissodinae, Styanacinae, Cryptorrhynchinae, Acicneminae, Magdalinae, Hylobiinae and Cossoninae are close to each other. Carciliinae has often been treated under Magdalinae, but the basis of elytra are not produced anteriorly, front coxae are separated and prosternum is canaliculate. *Styanax* was placed by Heller and Marshall in Hylobiinae, but the apices of tibiae are close to those of Pissodinae than to Hylobiinae. *Protacalles* and *Protacallinus* (both Cryptorrhynchinae), *Seleucha* (Hylobiinae) and *Cotasteromimus* (Pissodinae) are fairly close to each other. Cossoninae may be characterized by the inner setose fringe of tarsal groove of front tibia.

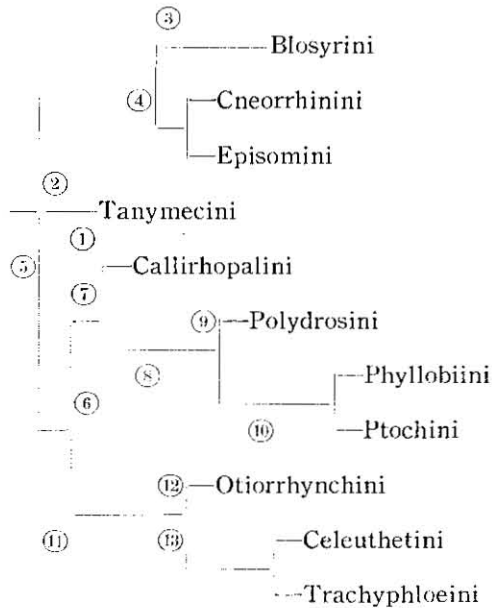
Posterior margins of 2nd—4th visible sternites of abdomen are curved posteriorly in the subfamilies Zygopinae, Ceuthorrhynchinae, Barinae, Tychiinae and Rhynchaeninae, this character corresponds with the articulating mechanism of sternites.

The general body form of Cioninae is often very close to some genera of Hyperinae such as *Phaenopholus*. Notarinae and Hyperinae have been treated as distinct subfamilies, but the long-nosed Hyperinae is very close to Notarinae auct. in various characters and I would like to combine these two subfamilies into a subfamily Hyperinae.

It may be better to separate the Rhynchaeninae from Tychiinae by the larval characters. Rhynchaenine larvae are pupate in the tunnel of leaf and the leaf miners of Tychiinae are pupate in the soil (*Ochyromera*, *Elleschus*, etc.)

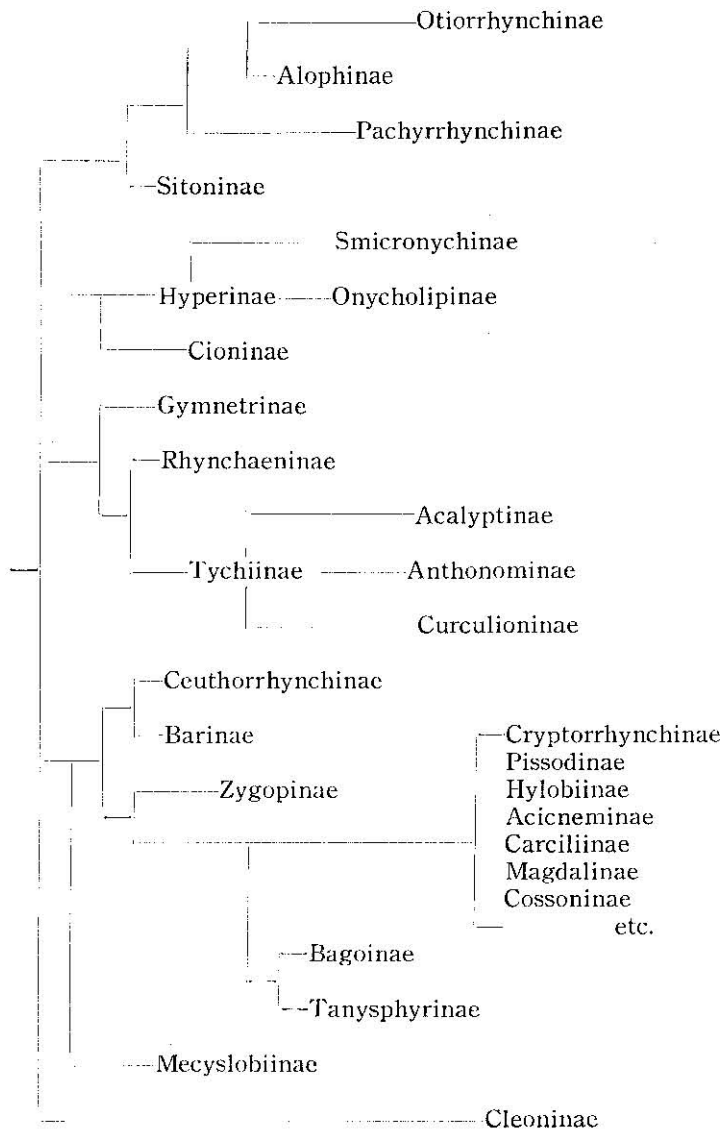
Subdivision of Curculionidae adelognathi into subfamilies can be said "artificial" at present, because they are very often characterized by a single structure, for instance, Eremninae has been characterized only by the presence of the ocular lobes on prothorax, Cyphicerini of Eremininae is apparently a part of Ptochini from the point of comparative morphology and not close to Callirhopalini of the same subfamily. Brachyderinae and Otiorrhynchinae can be separable only by the position of the antennal scrobes. When the other characters are taken into consideration, Episomini of Otiorrhynchinae is apparently close to Cneorrhinini of Brachyderinae in the metendosternite, ovipositor and tibiae.

In this paper I would like to propose a new system of Curculionidae adelognathi from the structures of metendosternite, ovipositor and the other characters as follows:



1. Metendosternite Y-shaped or with lateral arms. Pronotum with vibrissae.
2. Metendosternite with lateral arms.
3. Ovipositor with coxite entirely subdivided. Hind tibiae with corbel open.
4. Ovipositor with coxite incised. Hind tibiae with corbel enclosed.
5. Metendosternite Y-shaped, without lateral arm.
6. Anterior margin of metendosternite inflected.
7. Ovipositor with coxite incised. Prementum entirely covers the preoral cavity.
8. Ovipositor developed, divided into two parts, basal part very often membranous. Prementum not completely covers the preoral cavity.
9. Ovipositor with styli present.
10. Ovipositor with styli absent.
11. Anterior margin of metendosternite not inflected.
12. Ovipositor less developed, coxite simple or incised.
13. Ovipositor developed, basal major part membranous, terminal sclerites subdivided into two parts by a longitudinal membrane.

The relationship of the subfamilies of Curculionidae could be illustrated as follows:



Key to subfamilies.

1. Antennae with funicle 5-segmented. Tibiae mucronate or unarmed.2
- 1'. Antennae with funicle 6- or 7-segmented3
2. Metepimera exposed. Frons between eyes narrower than the base of rostrum. Posterior margins of 2-4 visible segments of abdomen

- curved posteriorly at the side. Pygidium concealed.....Cioninae
- 2'. Metepimera concealed. Frons between eyes as broad as or broader than the base of rostrum. Posterior margins of 2—4 visible segments of abdomen straight. Pygidium exposed.....Gymnetrinae
3. Tarsi 3-segmented, 4th, 5th segments and claws absent. Posterior margins of 2—4 visible segments of abdomen curved posteriorly at the sides. Procoxae contiguous. Metepimera concealed. Each tibia armed with an uncus.....Anoplinae
- 3'. Tarsi 5-segmented; 4th segment small and often invisible4
4. Mesepimera strongly ascended upwards between the base of pronotum and elytra, therefore they are visible from above. Hind tibiae unarmed or each with a mucro. Front coxae separated. Posterior margins of 2—4 visible segments of abdomen curved posteriorly at the sides. Eyes lateral.....5
- 4'. Mesepimera not ascended; or if ascended, tibiae each armed with an uncus and eyes strongly approximated dorsally6
5. Metasternum contiguous with the 1st segment of abdomen between hind coxae and metepisterna. Metepisterna parallel-sided. Tibiae unarmed or each with a small mucro. Corbel of tibiae opened. Claws often appendiculate. Pronotum with ocular lobes. Small, oval and convex species.....Ceuthorrhynchinae
- 5'. Metasternum separated from 1st segment of abdomen on each side, hind coxae contiguous with metepisterna. Metepisterna widened from the middle towards the posterior ends. Tibiae mucronate, corbel with the inner bare carina developed. Claws simple. Body oval, elongate or parallel-sidedBarinae
6. Hind femora much thicker than the anteriors. Hind tibia with the corbel lying entirely on the dorsal edge, unarmed. Mesepimera not ascended upwards. Eyes large, strongly prominent or confluent on frons. Posterior margins of 2—4 visible segments of abdomen curved posteriorly at the sides. Claws separated, appendiculate. Rhynchaeninae
- 6'. Hind femora not thicker than the anteriors, corbels of tibiae oblique, tibiae truncate or armed at the apex7
7. Eyes large, flat, closely approximated to each other on frons, occupying the major part of frons. Posterior margins of 2—4 visible segments of abdomen curved posteriorly at the sides. Tibiae uncinatae. Metepimera often ascended upwardsZygopinae
- 7'. Eyes not closely approximated on frons; if approximated, metepimera not ascending upwards or posterior margins of abdominal segments straight8
8. Mandibular motion vertical. Rostrum very slender. Claws appendiculate, posterior margin of 2nd visible segment of abdomen curved posteriorly at the sides. Eyes not prominent from the outline of

- headCurculioninae
- 8'. Mandibular motion horizontal9
9. Posterior margins of 2—4 visible segments of abdomen curved posteriorly at the sides. Front coxae contiguous. Claws separated, appendiculate. Rostrum rather robust, nearly as long as head and pronotum taken together. Antennae inserted before the middle of rostrum. Rostrum perpendicular to the axis of body in repose. Smaller species.....Tychiinae
- 9'. Posterior margins of 2—4 visible segments of abdomen straight; if curved, front coxae separated or claws simple10
10. Tibiae mucronate or unarmed, the outer setose fringe of corbel forming a transverse apical border to the tibia, though it is often continued round the external angle and along the dorsal edge, forming a strong curve, which is usually subrectangular11
- 10'. Tibiae uncinatae, inner carina of corbel developed, uncus arisen from this carina. The outer setose fringe of corbel oblique and straight or gently curved, or the fringe vestigial20
11. Mandibles with a deciduous cusp, leaving a scar. Rostrum short. Prementum not pedunculateOtiorrhynchinae
- 11'. Mandibles without scar12
12. Mesepimera very narrow. Elytra contiguous with mesepisterna. Procoxae separated. Rostrum very short. Claws simple, free. Corbels opened. Postmentum not pedunculate ...Pachyrrhynchinae
- 12'. Elytra separated from mesepisterna. Procoxae contiguous, or if separated rostrum slender13
13. Exterior surface of mandibles with scales and hairs. Rostrum short, broader than long. Postmentum not pedunculate. Ovipositor less developed or vestigial. Maxillae with lacinia distinct.....Sitoninae
- 13'. Exterior surface of mandibles at most with several hairs. Rostrum longer than wide. Postmentum pedunculate.....14
14. Procoxae separated. Rostrum slender. Anterior margins of prosternum nearly straight. Front coxae lying on the posterior 1/3 of prosternum. Metepimera concealed.....15
- 14'. Procoxae contiguous, lying about the middle of prosternum16
15. Eyes convex. Lateral margins of pronotum costate. Claws simple Petalochilinae
- 15'. Eyes flat. Lateral margins of pronotum not costate. Claws appendiculate. Pygidium exposedAcalyptinae
16. Median and hind tarsi not spongy beneath, 3rd segment of front tarsi with long hairs beneath. Front claws much thicker than the posteriors. Median and hind corbels semienclosed. Outer apical edge of front tibiae strongly protruded. Rostrum robust, shorter than pronotum, dorsal surface nearly flat. Antennae in-

- serted near the apex of rostrum, 6-segmented. Ventral longitudinal flange of metendosternite connate with a median longitudinal line of metasternum in entire length.....Onycholipinae
- 16'. All tarsi spongy beneath. All claws similar to each other. Outer apical edge of front tibiae simply rounded. Metendosternite normal.....17
17. Outer surface of mandible strongly compressed and blade-like towards the apex, inner surface deeply excavated. Rostrum robust, subquadrate in cross-section. Antennae inserted near the apex of rostrumAlophinae
- 17'. Outer surface of mandible not compressed, inner surface with 2 or 3 teeth, not excavated18
18. Eyes lateral. Prosternum not canaliculated. Claws free19
- 18'. Eyes closely approximated beneath to each other. Prosternum with a shallow canal before coxae. Claws connate. Rostrum separated from head by a transverse depression. Posterior margins of 2-4 visible segments of abdomen curved posteriorly at the sides..... Smicronycinae
19. Eyes strongly convex, distinctly prominent from the outline of head. Rostrum cylindrical. Front coxae lying at the middle or a little before the middle of prosternum. Claws often appendiculateAnthonominae
- 19'. Eyes not prominent from the outline of head. Front coxae lying on the middle or behind the middle of prosternum. Claws simple. Antennae inserted near the apex of rostrum.....Hyperinae
20. Front coxae separated, with a few exceptions¹⁾21
- 20'. Front coxae contiguous27
21. Claws bifid, inner branches connate to each other. Basis of elytra strongly produced anteriorly, covering the basal part of pronotum. Hind angles of pronotum angulate. Front femora much thicker and a little longer than the posteriorsMecyslobinae
- 21'. Claws separated. Basis of elytra not laminate in general, basal part of pronotum entirely exposed..... 22
22. Prosternum canaliculate23
- 22'. Prosternum flat or depressed.....25
23. Claws simple. Ocular lobes of pronotum developed. Eyes partly covered by ocular lobes in repose24
- 23'. Claws appendiculate, ocular lobes of prothorax absent. Eyes separated from prothorax in reposeCarcillinae

¹⁾ Some genera of the Ithyporini are close to a certain genus of Lithinini in having the connate front coxae and canaliculate prosternum before coxae, but the formers may be separable from the latter by the slenderer rostrum and antennae which are inserted far behind the apex of rostrum.

24. Rostrum very short, broader than long, subquadrate in cross-section. Antennae short, scape nearly as long as the first two segments of funicle taken togetherStyanacinae
- 24'. Rostrum slender, cylindrical. Antennae slenderer, scape nearly as long as all the segments of funicle taken together Cryptorrhynchinae
25. Tarsal grooves of front tibiae rounded posteriorly and fringed with setae on the lower part of the margins a little above the lower edge of tibia. Third tarsal segments broader than the 2nd, bilobed 26
- 25'. Front tibiae fringed with setae on the lower edge near the apex, tarsal grooves of front tibiae opened behind. Tarsi with the 3rd segment not or a little broader than the 2nd. Femora unarined. Body slender, parallel-sidedCossoninae
26. Antennal scrobes oblique, the posterior ends closely approximated or confluent under the base of rostrum. Ocular lobes of pronotum developed. Rostrum longer than pronotum, antennae inserted behind the middle. Abdominal process between hind coxae very broad, broader than coxaAcicneminae
- 26'. Antennal scrobes separated throughout. Ocular lobes of pronotum very weak or absent. Antennae inserted into the middle—apical 1/3 of rostrumPissodinae
27. Labial palpi one-segmented or absent. Claws connate.....28
- 27'. Labial palpi 3-segmented. Claws usually separated29
28. Labial palpi one-segmented, globular, inserted into a hole at the ventro-lateral edge a little before the middle of prementum. Prementum between palpi transversely depressed. Metepimera exposed. Fifth tarsal segment longer than the 3rdCleoninae
- 28'. Labial palpi absent. Prementum not divided by a depression. Metepimera concealed. Rostrum robust, as broad as or broader than long, female rostrum swollen. Fifth tarsal segment not longer than the 3rdGalloisiinae
29. Basis of elytra laminate, strongly produced anteriorly and covering the basal part of pronotum30
- 29'. Basis of elytra not produced anteriorly, basal margin of pronotum entirely exposed31
30. Metepimera concealed, hind angles of pronotum simply rounded. Fifth tarsal segment armed with a pair of laminate projections behind claws. Body rhombic.....Trigonocollinae
- 30'. Metepimera exposed. Hind angles of pronotum angulate, produced latero-posteriorly. Fifth tarsal segment simple. Body parallel-sided Magdalinae
31. Fifth tarsal segment longer than the 3rd. Anterior margin of prosternum excavated. Ocular lobes often present32

- 31.' Fifth tarsal segment not longer than the 3rd, anterior margin of prosternum not excavated. Ocular lobes absent. Subaquatic species *Tanysphyrinae*
32. Third tarsal segment much broader than the 2nd, bilobed, 4th segment concealed.....*Hylobiinae*
- 32'. Third segment not or a little broader than the 2nd, not bilobed, 4th segment distinct, exposed. Body closely covered with a dense vernish-like waterproof coating of scales. Subaquatic species
.....*Bagoinae*

Subfamily Cioninae

Key to genera.

1. Tarsus with a single claw2
- 1'. Tarsus with a normal, paired claws, which are connate at the base3
2. Front coxae separated. Prosternum before coxae deeply canaliculated*Stereonychidius* Morimoto
- 2'. Front coxae contiguous. Prosternum flat or depressed.....
..... *Stereonychus* Suffrian
3. Male tibia mucronate. Elytra without a sutural spot. Anterior margin of prosternum straight or slightly sinuate. Claws of the same length in both sexes*Cleopus* Stephens
- 3'. Tibiae unarmed in both sexes. Elytra with a sutural spot. Anterior margin of prosternum excavated. Claws of the same length in female, the inner claw shorter than the outer one in male*Cionus* Clairville

Subfamily Gymnetrinae

Key to genera.

1. Front coxae contiguous. Claws connate. Rostrum shorter
..... *Gymnetron* Schönherr
- 1'. Front coxae separated. Claws free. Rostrum longer
.....*Miarus* Stephens

Subfamily Anoplinae

- Unique genus*Anoplus* Schönherr

Subfamily Rhynchaeninae

Key to tribes.

1. Eyes confluent on frons. Rostrum perpendicular to the axis of body or received upon breast in repose*Rhynchaenini*
- 1'. Eyes lateral, strongly convex. Rostrum directed anteriorly in repose
..... *Dinorrhopalini*

Tribe Rhynchaenini

Key to genera.

1. Tibiae unarmed at tip, hind tibiae flattened dorsally in entire length. Rostrum perpendicular to the axis of body in repose.....
..... *Orchestoides* Roelofs
- 1'. Anterior four tibiae armed with uncus. Rostrum received on breast in general2
2. Antennae straight, inserted between eyes*Rhamphus* Clairville
- 2'. Antennae geniculate, inserted into rostrum
.....*Rhynchaenus* Clairville

Tribe Dinorrhopalini

Key to genera.

1. Rostrum very short, broader than long. Antennae inserted between eyes. Front coxae separated. Inner apical edge of hind tibia pointed*Dinorrhopala* Pascoe
- 1'. Rostrum as long as or longer than wide. Antennae inserted into rostrum. Front coxae contiguous. Inner apical edge of hind tibia rounded*Ixalma* Pascoe

Subfamily Ceuthorrhynchinae

Key to tribes.

1. First visible segment of abdomen narrower than the 2nd, subdivided into three parts by coxal cavities. Rostrum tapered towards the apex. Body globular. Claws bifid, inner branches entirely contiguous to each other*Orobitini*
- 1'. First visible segment of abdomen broader than the 2nd, not subdivided. Rostrum parallel-sided2
2. Hind femora clavate, much thicker than the anteriors. Rostrum a little shorter than pronotum. Claws simple. Eyes partly concealed under pronotum in repose*Hypurini*
- 2'. Hind femora not or slightly thicker than the anteriors, or rostrum longer than pronotum if hind femora clavate. Claws often appendiculate3
3. Elytra with the 8th intervals not broader than the others at the base, humeral tubercles absent, subapical swellings absent. Each interval armed with a row of tubercles. Pronotum without lateral tubercles.....*Scleropterini*
- 3'. Elytra with the 8th intervals convex, much broader than the others at the base4
4. Rostrum robust, shorter than pronotum. Eyes entirely exposed or small parts concealed in repose. Ocular lobes absent or weak*Rhinoncini*

- 4'. Rostrum slender, longer than pronotum. Ocular lobes developed, covering the major parts of eyes in repose.....5
5. Scutellar lobe of pronotum costate, sharply pointed and strongly produced posteriorly, covering scutellum. Hind femora thicker than the anteriorsMecysmoderini
- 5'. Scutellum exposed. Posterior margin of pronotum weakly bisinuate. Hind femora not or a little thicker than the anteriorsCeuthorrhynchini

Tribe Orobitini

Unique genus*Orobitis* Germar

Tribe Hypurini

Unique genus.....*Hypurus* Rye

Tribe Scleropterini

Unique genus*Rhytidosomus* Schönherr

Tribe Rhinoncini

Key to genera.

1. Antennal funicle 6-segmented. Prosternum between coxae narrow, not canaliculate before coxae*Phytobius* Schönherr
- 1'. Antennal funicle 7-segmented. Prosternum between coxae broader, canaliculate before coxae2
2. Femora each armed with a small tooth.....*Rhinoncomimus* Wagner
- 2'. Femora unarmed*Rhinoncus* Stephens

Tribe Mecysmoderini

Unique genus*Mecysmoderes* Schönherr

Tribe Ceuthorrhynchini

Key to genera.

1. Antennal funicle 7-segmented2
- 1'. Antennal scape adorned with a very long spine at the apex. Pectoral canal extending into metasternum. Pronotum with a pair of large tubercles at the middle3
- 2'. Antennal scape rounded or pointed at the apex4
3. Tibiae flattened, toothed or angulate on the outer side. Pronotum not depressed before scutellum*Craponius* Leconte
- 3'. Tibiae neither flattened nor toothed. Pronotum deeply depressed before scutellum.....*Cyphosenus* Schultze
4. Intervals of elytra each with a row of pointed tubercles or setigerous granules. Pronotum with a pair of tubercles, basal margin nearly straight5

- 4'. Dorsal part of elytra neither tuberculate nor granulate.....7
 5. Elytra with a white scutellar spot6
 5'. Elytra without a scutellar spot. Black. Each interval of elytra with a row of pointed tubercles and a row of dark setae. Pronotum convex, glossy. Mesosternum excavated*Zacladus* Reitter
 6. Black. Pronotum strongly punctured. Tibiae simple, femora armed*Homorosoma* Frivaldsky
 6'. Antennae, rostrum and legs reddish. Pronotum weakly punctured. Median tibiae with a small hair tuft before the apex. Each interval of elytra clothed with a row of erect white scales. Mesosternum weakly depressed*Micrelus* Thomson
 7. Pectoral canal extending onto metasternum.....8
 7'. Pectoral canal not extending behind front coxae*Ceuthorrhynchus* Germar
 8. Tibiae flattened, not dilated towards the apex. Corbels of hind tibiae ascended anteriorly. Body entirely or partly red*Coeliodes* Schönherr
 8'. Tibiae not flattened, dilated towards the apex. Corbels not ascended. Body black*Cidnorrhinus* Thomson
 9. Intervals of elytra each armed with a row of pointed setigerous granules. Pectoral canal extending onto metasternum.....*Ceuthorrhynchidius* J. du Val
 9'. Intervals of elytra unarmed. Pectoral canal not extending behind front coxae.....*Calosirus* Thomson

Subfamily Barinae

Key to genera.

1. Elytron provided with 8 punctured striae, lateral 3 striae not reaching the base, 7th and 8th striae confluent above the 2nd segment of abdomen. Rostrum not separated from frons. Prosternum deeply depressed before coxae. Pronotum with ocular lobes. Pygidium exposed. Body rhombic .. *Centrinopsis* Roelofs
 1'. Elytron provided with 10 punctured striae, 9th and 10th striae separated throughout2
 2. Tarsi each with a single claw. Rostrum not separated from frons. Pectoral canal extending to the middle of front coxae. Antennae with funicle widened terminally, continuous to club. Pygidium exposed. Posterior margin of 5th visible segment of male abdomen quadrately projected posteriorly at the middle, the projection glossy. Body rhombic*Barinomorphus* Morimoto
 2'. Tarsi each with a normal, paired claws3
 3. Hind femora exceeding the apex of elytra, hind tibiae very short, shorter than half the length of hind femora, curved. Rostrum

- not separated from frons. Body cylindrical, linear. Elytra each with a fovea near the apex in male, subapical swellings absent *Aparallelodemas* Morimoto
- 3'. Hind femora not exceeding the apex of elytra, hind tibiae nearly as long as femora. Elytra without fovea.....4
4. Rostrum not separated from frons, shorter than pronotum. Pygidium oblique or horizontal, entirely concealed at least in female. Body elongate, parallel-sided *Limnobaris* Bedel
- 4'. Rostrum separated from frons by a transverse depression, often the depression weak5
5. Prosternum deeply canaliculate, inside of the canal glossy. Body rhombic.....6
- 5'. Prosternum not or shallowly canaliculate, inside of the canal not glossy, the canal not reaching front coxae7
6. Pygidium exposed in both sexes. Posterior margin of the 5th visible segment of male abdomen quadrately projected posteriorly at the middle, the projection glossy. Claws connate *Barinomorphoides* Morimoto
- 6'. Pygidium entirely concealed in both sexes. Claws free. Corbel with the inner canina strongly laminate, dorsal end of the carina angulate *Pseudorhyssematus* Morimoto
7. Tibiae uncinatae and further mucronate, the mucro rectangular to the axis of tibia, inner margin of tibiae serrate. Pronotum broadest at the base. Claws connate. Labial palpi one-segmented *Didthis* Zaslavsky
- 7'. Tibiae uncinatae, inner margin not serrate. Palpi 3-segmented 8
8. Pygidium concealed. Mesosternum lying on the same level with pro- and metasternum. Scutellum invisible..... *Keibaris* Chûjô
- 8'. Pygidium exposed. Mesosternum oblique or depressed. Scutellum visible *Baris* Germar

Subfamily Zygotinae

Key to tribes.

1. Prosternum canaliculate, each side of the canal keeled.....2
- 1'. Prosternum flat or depressed4
2. Scutellar lobe of pronotum developed and covering scutellum *Lobotrachelini*
- 2'. Base of pronotum straight, arched or bisinuate3
3. Anterior tibiae more or less depressed, with a fine stria along the lateral margin, which is bordered with fine carinae. Mesepimera strongly ascended upwards between the base of pronotum and elytra, therefore they are clearly visible from above. Small species *Isorrhynchini*

- 3'. Anterior tibiae not or rarely depressed, simple or with a lateral keel. Mesepimera not ascended upwards. Metepisterna parallel-sided.....Othippiini
4. Antennae with funicle 6-segmented. Mesepimera not or weakly ascended upwards.....Mecopini
- 4'. Antennae with funicle 7-segmented5
5. Mesepimera large, strongly ascended upwards between the base of pronotum and elytra, therefore they are clearly visible from above, their upper limits being far higher than that of metepisterna and reaching at least to the level of stria 9 of elytra. Metepisterna parallel-sided, posterior coxae broadly separated from lateral margin of elytraCoryssomerini
- 5'. Mesepimera smaller, not ascended upwards. Metepisterna tapered posteriorly, posterior coxae being close to lateral margin of elytra. Prosternum before coxae depressed. Rostrum perpendicular to the axis of body in reposeSphadasmini

Tribe Lobotrachelini

Key to genera.

1. Pectoral canal confined to prosternum, open behind, mesosternum slightly depressed or flat, not grooved*Lobotrachelus* Schönherr
- 1'. Pectoral canal prolonged to mesosternum, sharply limited behind. Procoxae comparatively larger and legs shorter.....*Metetra* Pascoe

Tribe Othippiini

.....*Egiona* Pascoe

Tribe Mecopini

Key to genera.

1. Antennae with club very long, cylindrical, first segment of club as long as all the segments of funicle taken together.....*Neomecopus* Hustache
- 1'. Antennae with club normal, oval or fusiform.....2
2. Posterior femora with a triangular large tooth and the exterior margin of the tooth serrate. Antennae with the 1st segment of club rapidly tapered basally. Posterior tibiae dilated inwards at the middle*Mecopomorphus* Hustache
- 2'. Femora with the tooth small and normal, posteriore tibiae parallel-sided. Anterior coxae not contiguous. Prosternum with a pair of long spines in male*Phylaitis* Pascoe

Tribe Isorrhynchini

Key to genera.

1. Scutellum depressed, oblique to the axis of body, posterior margin much lower than the level of elytra. Pronotum with weak ocular lobes. Front femur a little thicker and the tooth larger than the hind ones. Each femur with a pair of setae between the tooth and apex. First segment of abdomen as long as the 2nd and 3rd taken together. Lateral tubercles on pronotum absent. Both sides of prosternal canal sharply keeled and the canal reaching the middle of front coxae.....*Macrotelephae* Morimoto
- 1'. Scutellum normal, flat or slightly convex. Ocular lobes on pronotum absent2
2. Front femora much thicker than posterior ones and with a very large tooth, with a pair of long setae between the tooth and apex. Front tibiae with several long erect or suberect setae on the inner margin near the base. Prosternal canal limited by the front coxae, both sides of the canal bordered with obtuse and broader keels. Pronotum with lateral tubercles...*Telephae* Pascoe
- 2'. Front femora scarcely thicker than posterior ones, the tooth not very large. Front femora and tibiae without special setae.....3
3. Prosternal canal reaching the posterior margin of front coxae, both sides of the canal sharply limited by keels. First segment of abdomen as long as the 2nd and 3rd taken together. Lateral tubercles on pronotum absent.....*Podeschrus* Roelofs
- 3'. Prosternal canal reaching the anterior margin of middle of front coxae4
4. Prosternal canal bordered with obtuse and broad keels, the keel reaching the anterior margin of front coxa. First segment of abdomen as long as the 2nd at the lateral margin. Lateral tubercles on pronotum present*Ellatocerus* Schönherr
- 4'. Prosternal canal reaching the middle of front coxae and bordered with sharp keels. First segment of abdomen as long as the 2nd and 3rd taken together. Lateral tubercles on pronotum absent.*Kumozo* Morimoto

Tribe Coryssomerini

Key to genera.

1. Elytra with stria 1 not reaching the base, but ceasing behind scutellum. Pygidium almost covered2
- 1'. Elytra with stria 1 reaching the base. Pygidium exposed. Eyes large, closely subcontiguous. Mesosternal process as broad as coxa*Metialma* Pascoe

2. Lower margin of eye lying far above the upper edge of the scrobe.....3
- 2'. Lower margin of eye on a level with the upper edge of scrobe, eyes sharply acuminate in front. Body subrhombic or elliptic..... *Osphilia* Pascoe
3. Body subrhombic or elliptic, pronotum narrower than elytra..... *Euryommatus* Roger
- 3'. Body oblong, cylindrical, parallel-sided, pronotum scarcely narrower than elytra*Heurippa* Pascoe

Tribe Sphadasmini

..... *Nipponosphadasmus* Morimoto

Subfamily Curculioninae

..... *Curculio* Linné

Subfamily Tychiinae

Key to tribes.

1. Angles of second visible segment of abdomen extending to the 4th. Rostrum tapered anteriorly from lateral aspectTychiini
- 1'. Angles of second visible segment of abdomen not extending to the 4th2
2. Ocular lobes of prothorax developed. Rostrum robust. Eyes not prominent from the outline of head. Pronotum strongly convex. Prosternum canaliculate before coxaeDemimaeini
- 2'. Ocular lobes absent. Eyes more or less prominent from the outline of head. Pronotum flat or weakly convex3
3. Prosternum canaliculate. Pygidium entirely concealed. Rostrum embraced on prosternum in repose. Eyes less convex...Elleschini
- 3'. Prosternum not canaliculate. Pygidium often exposed. Rostrum perpendicular or anterior to the axis of body in repose. Eyes strongly convexEndaeini

Tribe Tychiini

Key to genera.

1. Antennae with funicle 7-segmented*Tychius* Schönherr
- 1'. Antennae with funicle 6-segmented*Sibinia* Germar

Tribe Demimaeini

..... *Demimaea* Pascoe

Tribe Elleschini

.....*Elleschus* Stephens

Tribe Endaeini

Key to genera.

1. Antennae with funicle 6-segmented2
- 1'. Antennae with funicle 7-segmented4
2. Front femora much thicker than the posteriors and each bearing a large tooth *Endaeus* Schönherr
- 2'. Front femora not thicker than the posteriors and each bearing a small or minute tooth3
3. Tibiae uncinata, unci oblique. Antennae with funicle as long as scape*Gryphorhynchus* Roelofs
- 3'. Tibiae with front and middle pairs very finely uncinata, hind tibiae unarmed. Femora armed each with a minute obtuse tooth. Antennae with funicle much longer than scape
.....*Endaenidius* Morimoto
4. Front femora much thicker than the posteriors and bearing a large triangular tooth, with several long setae on the inner margin near the apex5
- 4'. Front femora not thicker than the posteriors and bearing a small tooth6
5. Prosternum marginate with submarginal transverse ditch before coxae. Pronotum broadest about the middle.....*Eusynnada* Heller
- 5'. Prosternum before coxae not ditched transversely, nearly flat. Rostrum robust.....*Exochyromera* Voss
6. Pronotum broadest at the base. Body black7
- 6'. Pronotum broadest at the middle. Submarginal transverse ditch of prosternum onnate with coxal groove. Tarsi uncinata. Femoral tooth small.....*Heterendaeus* Morimoto
7. Scutellum distinct*Sphixioides* Voss et Chûjô
- 7'. Scutellum concealed? *Sphinxus* Roelofs

Subfamily Sitoninae

Key to genera.

1. Elytra strongly rounded at the sides, humeri absent. Metasternum very short*Parasitones* Sharp
- 1'. Elytra with rectangular humeri. Wings functional.....2
2. Labial palpi three-segmented, attached to the anterior margin of prementum. Mandibles of normal size, shorter than the smallest diameter of eyes*Sitona* Germar

- 2'. Labial palpi one-segmented, attached to the ventral surface of prementum. Mandibles larger, longer than the smallest diameter of eyes *Eugnathus* Schönherr

Subfamily Pachyrrhynchinae

Unique genus *Pachyrrhynchus* Germar

Subfamily Otiorrhynchinae

Key to tribes.

1. Antennal scrobes short, usually located on the dorsal surface of rostrum; or if on sides, directed towards eyes2
- 1'. Antennal scrobes rather long, located on the sides of rostrum and directed very obliquely downwards or curved downwards before eyes7
2. Corbels of hind tibiae enclosed. Claws connate. Metepisterna almost concealed. Bases of elytra slightly produced anteriorly ...
..... Episomini
- 2'. Corbels of hind tibiae opened or semienclosed. Claws connate or free. Basis of elytra not produced anteriorly.....3
3. Procoxae connate. Female 8th sternite with an apophysis4
- 3'. Procoxae separated. Epistome ill-defined. Corbels of hind tibiae semienclosed. Female 8th sternite without apophysis
..... Celeuthetini
4. Mesepisterna very large and in direct contact with the margin of elytra, mesepimera very small. Humeral calosities of elytra absent
..... Otiorrhynchini
- 4'. Mesepisterna a little larger than mesepimera and not reaching the margin of elytra5
5. Claws connate6
- 5'. Claws separated. Prementum covering entire buccal cavity. Postmentum very short or not pedunculate. Epistome well defined ...
..... Ptochini
6. Elytra oval, humeri absent. Pronotum with ocular lobes. Antennal scrobes latero-dorsal in position, directing towards eyes, nearly straight. Prementum covering entire buccal cavity. Postmentum not pedunculate. Epistome well definedCallirhopalini
- 6'. Elytra with rectangular humeri. Prementum shortly pedunculate. Epistome ill-defined. Prothorax without ocular lobes ...Phyllobiini
7. Prothorax with vibrissaeTanymecini
- 7'. Prothorax without vibrissae.....8
8. Corbels of hind tibiae enclosed. Prementum entirely covering the buccal cavity. Hind wings not functional.....Cneorrhynchini

- 8'. Corbels opened or semienclosed.....9
 9. Elytra with rectangular humeri. Prementum partly covering the buccal cavity. Postmentum shortly pedunculate. Hind wings functional.....Polydrosini
 9'. Elytra oval, humeri reduced. Prementum entirely covering the buccal cavity. Postmentum not pedunculate. Hind wings vestigial.....Blosyrini

Tribe Episomini

..... *Episomus* Schönherr

Tribe Celeuthetini

..... *Arrhaphogaster* Roelofs

Tribe Otiorrhynchini

Key to genera.

1. Rostrum abruptly declivous dorsally at the apex *Asphalmus* Sharp
 1'. Rostrum not abruptly declivous dorsally at the apex *Omoiotus* Sharp

Tribe Phyllobiini

..... *Phyllobius* Germar

Tribe Ptochini

Key to subtribes and genera.

1. Elytra with humeri reduced, oval. Hind wings not functional ...
Subtribe Ptochina.....4
 1'. Elytra with rectangular humeri. Hind wings functional5
 2. Anterior margin of pronotum truncate, without ocular lobes.....
Subtribe Myllocerina5
 2'. Pronotum with either ocular lobes or vibrissae, or with the both3
 3. Rostrum not longer than wideSubtribe Cyphicerina.....8
 3'. Rostrum much longer than wideSubtribe Phytoscaphina
 *Phytoscaphus* Schönherr
 4. Pronotum with ocular lobes. Eyes larger, oblong-oval. Scutellum minute*Calomycterus* Roelofs
 4'. Pronotum without ocular lobes. Eyes smaller, convex. Scutellum absent.....*Myosides* Roelofs

5. Basal margin of pronotum straight or slightly rounded, not produced posteriorly towards scutellum. Basis of elytra not produced anteriorly6
- 5'. Basal margin of pronotum visibly bisinuate, more or less produced posteriorly towards scutellum. Basis of elytra slightly produced anteriorly and covering the basal part of pronotum, the covered basal area narrow crescent-shaped and declivous downwards *Myllocerus* Schönherr
6. Antennal scrobes approximated dorsally, oval, enclosed. Rostrum very short. Scape strongly curved inwards. Eyes large, lateral in position*Hyperstylus* Roelofs
- 6'. Antennal scrobes not approximated, opened behind7
7. Antennae slender, longer than the entire length of body. Epistome elongate, its hind margin forming a narrow angle, which extends behind the point of antennal insertion. Prementum with 4 setae. Dorso-lateral carinae of rostrum absent*Eumyllocerus* Sharp
- 7'. Antennae less slender, shorter than the length of body *Macrocorynus* Schönherr
8. Apex of rostrum pointed and horn-shaped. Antennal scrobes approximated.....*Anosimus* Roelofs
- 8'. Apex of rostrum simple, triangularly or semicircularly notched...9
9. Mentum with a pair of setae. Pronotum truncate or feebly bisinuate at the base. Corbels of hind tibiae semienclosed, having a bare internal carina*Cyphicerus* Schönherr
- 9'. Mentum with 4—8 setae10
10. Epistome short, its posterior margin broadly rounded or forming an obtuse angle, which does not extend behind the point of insertion of antennae. Mandible trisetose11
- 10'. Epistome elongate, its posterior margin narrowly rounded, which is exceeding slightly behind the point of insertion of antennae. Rostrum parallel-sided. Mandible multisetose. Basal margin of pronotum bisinuate. Eyes dorso-lateral in position*Canoixus* Roelofs
11. Postocular lobes of prothorax well developed. Dorsal area of rostrum at the base narrower than frons *Cyphicerinus* Marshall
- 11'. Postocular lobes obsolete and replaced by vibrissae, pronotum truncate or slightly bisinuate at the base12
12. Frons tumid, as wide as the greatest distance between scrobes, with a bare space behind epistome*Oedophyrus* Marshall
- 12'. Frons not tumid, narrower than the greatest distance between scrobes, without a bare space*Cyrtepistomus* Marshall

Tribe Callirhopalini

..... *Callirhopalus* Hochhuth

Tribe Tanymecini

Key to subtribes and genera.

1. Claws free2
- 1'. Claws connateSubtribe Piaziomiina.....*Sympiezomias* Faust
2. Rostrum separated from frons by a transverse furrow or depression.....Subtribe Prynina.....3
- 2'. Rostrum not separated from frons by a furrow or depression Subtribe Tanymecina.....4
3. Corbels of hind tibiae semienclosed. Declivity of elytra with erect or recumbent hairy scales, which are hardly longer than those on disc. Hind tibiae among the recumbent scales with erect, rather short hairy scales; on the dorsal surface of hind tibiae these are not longer than on the other tibiae.....*Amystax* Roelofs
- 3'. Corbels opened. Declivity of elytra with very long erect bristles. Hind tibiae with very long rough hairs *Enaptorrhinus* Waterhouse
4. Elytra with rectangular humeri*Chlorophanus* Germar
- 4'. Elytra with humeri absent5
5. Mandibles normal, scar distinct.....*Scepticus* Roelofs
- 5'. Outer surface of mandibles strongly compressed and blade-like towards the apex, scar not recognizable.....*Meotiorrhynchus* Sharp

Tribe Cneorrhinini

Key to genera.

1. Prothorax strongly bisinuate at the base, bases of elytra slightly produced anteriorly.....*Dermatoxenus* Marshall
- 1'. Prothorax truncate or slightly rounded at the base, bases of elytra not produced anteriorly*Catapionus* Schönherr

Tribe Polydrosini

.....*Scythropus* Schönherr

Tribe Blosyrini

..... *Blosyrus* Schönherr

Subfamily Petalochilinae

Tribe Derelomini

.....*Derelomus* Schönherr

Subfamily Acalyptinae

..... *Acalyptus* Schönherr

Subfamily Onycholipinae

..... *Isonycholips* Chûjô et Vose

Subfamily Alophinae

Key to tribes.

1. Hind corbel semienclosed. Prementum and postmentum lying nearly on the same plane..... Alophini
- 1'. Hind corbel opened. Prementum and postmentum not lying on the same plane, prementum a little retracted inwards.....
..... Byrsopagini

Tribe Alophini

..... *Trichalophus* Leconte

Tribe Byrsopagini

..... *Byrsopages* Schönherr

Subfamily Smicronychinae

..... *Smicronyx* Schönherr

Subfamily Anthonominae

Key to tribes.

1. Hind corbel semienclosed, uncinata, the uncus arisen from the lower part of the inner carina2
- 1'. Hind corbel opened, mucronate or unarmed3
2. Antennae with funicle 6-segmented. Body elongate, elytra sub-parallel-sided. Rostrum nearly as long as head and pronotum taken together Bradybatini
- 2'. Antennae with funicle 7-segmented. Body pear-shaped, strongly convex. Elytra with tubercles. Rostrum longer than head and pronotum taken together Tachypterellini
3. Body slender, parallel-sided. Mucro of front tibia small.....
..... Brachyonychini
- 3'. Body pear-shaped. Mucro of front tibia sickle-shaped.....
..... Anthonomini

Tribe Bradybatini

..... *Bradybalus* Germar

Tribe Tachypterellini

..... *Tachypterellus* Fall & Cocker

Tribe Brachyonychini

..... *Euphyllobiomorphus* Morimoto

Tribe Anthonomini

Key to genera.

1. Claws free, not appendiculate. Body glossy
 *Anthonomorphus* Weise
- 1'. Claws appendiculate or bifid *Anthonomus* Germar

Subfamily Hyperinae

Key to tribes.

1. Rostrum robust, shorter than pronotum, subquadrate in cross-section, costate. Pronotum with ocular lobes. Styli of ovipositor absentCylindrorrhini
- 1'. Rostrum cylindrical, slenderer, not strongly costate2
2. Front coxae lying at the middle of prosternum. Styli of ovipositor absent.....Hyperini
- 2'. Front coxae lying behind the middle of prosternum. Ovipositor bearing styliNotarini

Tribe Cylindrorrhini

..... *Listroderes* Schönherr

Tribe Hyperini

Key to genera.

1. Median tibia mucronate, front and hind tibiae unarmed. Rostrum longer than head and pronotum taken together. Pronotum broadest at the base. Elytra slightly longer than wide, convex. Body subglobular*Phaeopholus* Roelcfs
- 1'. Front and median tibiae mucronate. Rostrum as long as or shorter than head and pronotum taken together. Elytra distinctly longer than wide, shoulders subrectangular*Hypera* Germar

Tribe Notarini

Key to genera.

1. Scutellum small or absent. Elytra with the 1st, 3rd and 5th intervals costateSubtribe Orthocaetina.....
*Caenosilapillus* Chûjô et Morimoto
- 1'. Scutellum present. Elytra not costateSubtribe Notarina.....2

2. Femora unarmed3
 2'. Femora armed each with a small tooth..... *Dorytomus* Germar
 3. Antennal scrobes oblique, directed posteriorly to the lower margin of the base of rostrum. Derm clothed with oval scales. Ocular lobes present *Echinocnemus* Schönherr
 3'. Antennal scrobes parallel to the axis of rostrum. Ocular lobes lacked. Derm sparsely clothed with narrow scales4
 4. Rostrum closely punctured, neither striate nor costate, weakly flattened dorsally*Procas* Stephens
 4'. Rostrum with punctured striae and keels*Notaris* Stephens

Subfamily Mecyslobinae

Key to genera.

1. Tibiae mucronate and further uncinata. Frons between eyes deeply depressed*Mesalcidodes* Voss
 1'. Tibiae uncinata, the uncus arisen from the lower end of the inner carina. Frons flat.....*Mecyslobus* Reitter

Subfamily Carciliinae

..... *Carcilia* Roelofs

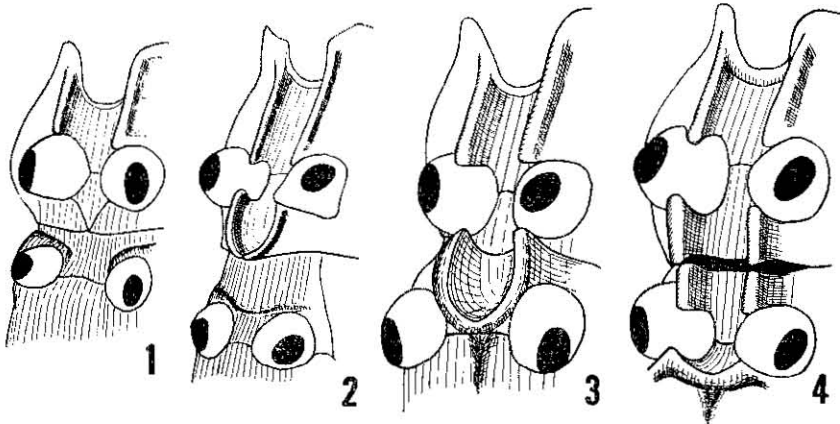


Fig. 1. Pectoral canals of Cryptorrhynchinae.

1. *Colobodes ornatus* (Ithyporini).
 2. *Camptorrhinus* sp. (Camptorrhinini).
 3. *Cryptorrhynchus lapathi* (Cryptorrhynchini).
 4. *Mechistocerus nipponicus* (Sophorrhinini).

Subfamily Cryptorrhynchinae

Key to tribes.

1. Tarsal claws toothed near the base. Pectoral canal not extending

- behind front coxaeChonotrachelini
- 1'. Tarsal claws simple.....2
2. Pectoral canal not extending behind front coxae. Antennal club oval, compact, not annulate or the apical margin of each segment oblique to the axis of club or strongly waved.....Ithyporini
- 2'. Pectoral canal extending onto the posterior margin of prosternum and bordered with a keel.....Camptorrhini
- 2''. Pectoral canal extending onto mesosternumCryptorrhynchini
- 2'''. Pectoral canal extending onto metasternumSophorrhini

Tribe Chonotrachelini

..... *Catagmatus* Roelofs

Tribe Ithyporini

Key to genera.

1. Antennal scrobes closely approximate to each other under the base of rostrum. Front coxae slightly separated
..... *Ectatorhinus* Lacordaire
- 1'. Antennal scrobes broadly separated throughout their length2
2. Wings vestigial. Elytra with humeri absent. Abdominal process as broad as metacoxa.....3
- 2'. Wings normal. Elytra with humeri rectangular, parallel-sided.....
..... *Colobodes* Schönherr
3. Front coxae contiguous4
- 3'. Front coxae separated. Elytra tuberculate.....*Acallinus* Morimoto
4. Femora unarmed. Ocular lobes of pronotum absent. Antennal club compact, oval. Prosternum slightly grooved before coxae
..... *Protacallinus* Morimoto
- 4'. Femora armed with tooth. Ocular lobes developed. Antennal club oblong-oval. Prosternum deeply canaliculate before coxae.....
..... *Protacalles* Voss

Tribe Camptorrhini

..... *Camptorrhinus* Schönherr

Tribe Cryptorrhynchini

Key to subtribes.

1. Metasternum separated from the 1st visible segment of abdomen between coxae and metepisterna. Abdominal process between coxae narrower than coxa. Metepisterna distinct
..... Subtribe Cryptorrhynchina

- 1'. Metasternum contiguous to the 1st visible segment of abdomen between coxae and metepisterna. Metepisterna narrow or vestigial. Metasternum very shortSubtribe Tylodina

Subtribe Cryptorrhynchina

1. Second visible segment of abdomen longer than the 3rd2
 1'. Second visible segment of abdomen as long as the 3rd.....7
 2. Femora sulcate beneath.....5
 2'. Femora not sulcate beneath3
 3. Apex of elytra separately rounded. Rostrum curved. Second visible segment of abdomen as long as the 3rd and 4th taken together...
 *Heterocryptorrhynchus* Morimoto
 3'. Conjoint apices of elytra acuminate posteriorly.....4
 4. Apex of elytra less pointed. Rostrum cylindrical, straight
 *Cechania* Pascoe
 4'. Apex of elytra distinctly pointed. Rostrum curved, not cylindrical.
 *Syrotelus* Pascoe
 5. Second visible segment of abdomen shorter than the 3rd and 4th taken together. Frons depressed on each side above eyes. Body rhombic*Rhyssematoides* Morimoto
 5'. Second visible segment of abdomen as long as the 3rd and 4th taken together6
 6. Conjoint apices of elytra acuminate. Antennae inserted about the middle of rostrum*Aechmura* Pascoe
 6'. Conjoint apices of elytra rounded. Antennae inserted behind the middle of rostrum*Orochlesis* Pascoe
 7. Rostrum straight, flat, short. Pectoral canal ending at the anterior margin of mesosternum. Male front legs much longer than the posteriors*Gasterocercus* Laporte et Brullé
 7'. Rostrum curved, not flat8
 8. Mesosternum truncate between mesocoxae9
 8'. Mesosternum arched posteriorly, the apex close to a line between the posterior ends of metacoxae12
 9. Rostrum separated from frons by a transverse depression. Femora armed each with two teeth. Tibiae parallel-sided, inner margin flattened throughout their length. Receptacle longer than wide, posterior part of the border nearly as broad as the lateral part...
 *Caenocryptorrhynchus* Morimoto
 9'. Rostrum contiguous to frons.....10
 10. Femora bidentate. Head with frons not separated from vertex. Front femora not distinctly, median and hind femora distinctly sulcate beneath.....*Cryptorrhynchus* Illigar
 10'. Femora unidentate. Head with frons depressed and a little lower

- than the level of vertex11
11. Femora distinctly sulcate beneath in entire length. Tibiae with the inner carina of corbels not laminate, ... *Shirahoshizo* Morimoto
- 11'. Femora not distinctly sulcate. Tibiae with the inner carina of corbels strongly laminate *Paracryptorrhynchus* Morimoto
12. Rostrum separated from frons by a transverse shallow depression, frons above the depression with a median short keel. Femora armed each with a tooth *Sculptosternellum* Morimoto
- 12'. Rostrum contiguous with frons. Femora and tibiae grooved throughout. Femora each armed with two teeth. Receptacle with the posterior part of the border narrower than the lateral part ...
..... *Coelosteridius* Morimoto

Subtribe Tylodina

Key to genera.

1. Metepisterna invisible. Femora not sulcated beneath. Derm clothed with setae and amorphous incrustation. Small species ...
..... *Microcryptorrhynchus* Lea
- 1'. Metepisterna distinctly visible. Femora sulcate beneath2
2. Elytron with 9 striae. Receptacle strongly prominent and the posterior margin costate. Second segment of abdomen longer than the 3rd and 4th taken together. Scutellum absent
..... *Pseudoporoapterus* Lea
- 2'. Elytron with 10 striae. Receptacle not strongly prominent, with a pair of fovea on the bottom. Second segment of abdomen shorter than the 3rd and 4th taken together. Scutellum minute
..... *Hytanzo* Morimoto

Tribe Sophrorrhini

Key to genera.

1. Antennae with funicle 6-segmented. Femora grooved beneath for nearly their entire length. Second visible segment of abdomen shorter than the 3rd and 4th taken together. Metepisterna visible throughout their length. Pronotum broadest at the base. Body oval, convex. Small species *Deiradocranoides* Morimoto
- 1'. Antennae with funicle 7-segmented2
2. Metepisterna concealed. Femora not grooved. Derm clothed with setae, scales and amorphous incrustation. Small species
..... *Catabonops* Roelofs
- 2'. Metepisterna distinctly visible3
3. First suture between 1st and 2nd visible segments of abdomen deeply depressed on each side and weak or obsolescent at the

- middle, especially in male. Frons with a deep fovea between eyes. Femora more or less clavate. Abdominal process between coxae narrower4
- 3'. First suture of abdomen distinct throughout its length in both sexes. Abdominal process broader. Femora nearly of the same width throughout their length, sublinear, not clavate
..... *Rhadinomerus* Faust
4. Front femora uniformly clothed with scales. Abdominal process as broad as the base of femur. Front femora not much exceeding from the anterior margin of head. Body parallel-sided. Pronotum very strongly punctured*Monaulax*
- 4'. Dorsal area of the base of femora not scaled, glossy. Abdominal process broader than the base of femur. Front femora much exceeding anteriorly from head.....*Mechistocerus* Fauval

Subfamily Acicneminae

Key to genera.

1. Scutellum concealed. Metasternum contiguous with the 1st visible segment of abdomen between coxae and metepisterna. Humeral callus obsolescent*Metrachodes* Marshall
- 1'. Scutellum distinct, often small. Metasternum separated from the 1st visible segment of abdomen between coxae and metepisterna2
2. Hind femora unarmed.....3
- 2'. Hind femora armed each with a triangular tooth
..... *Acicnemis* Lacordaire
3. Antennal scrobes separated throughout. Scutellum small, transverse, glossy. Prosternum before coxae flat. Pronotum convex. Elytra broadest at the middle, convex*Atrachodes* Morimoto
- 3'. Antennal scrobes confluent under the base of rostrum. Scutellum oval, scaled. Pronotum before coxae depressed. Pronotum with three longitudinal depression. Elytra parallel-sided
.....*Karekizo* Morimoto

Subfamily Pissodinae

Key to tribes.

1. Abdominal process between hind coxae subtruncate, nearly as broad as coxa. Rostrum a little shorter than pronotum. Eyes closely approximated to or partly concealed by the anterior margin of pronotum *Cotasteromimini*
- 1'. Abdominal process much narrower than coxa. Rostrum slenderer, cylindrical. Temples of head as broad as the diameter of eye ...
..... *Pissodini*

Tribe Cotasteromimini

Key to genera.

1. Rostrum contiguous with frons. First segment of funicle robust, 2nd segment deeply retracted into the 1st. Derm clothed with erect scales and amorphous incrustation
.....*Pseudohylobius* Morimoto
- 1'. Rostrum separated from frons by a transverse depression. Funicle normal. Derm clothed with depressed scales and incrustation
.....*Cotasteromimus* Chûjô et Voss

Tribe Pissodini

..... *Pissodes* Germar

Subfamily Cleoninae

Key to tribes.

1. Rostrum robust, costate, subquadrate in cross-section. Second segment of hind tarsi as long as or longer than the 3rd
..... Cleonini
- 1'. Rostrum cylindrical, not or weakly costate. Second segment of hind tarsi shorter than the 3rd
.....Lixini

Tribe Cleonini

Key to genera.

1. Inner margin of front tibia serrate. First segment of funicle longer than the 2nd2
- 1'. Inner margin of tibiae not serrate. First segment of funicle as long as the 2nd*Nemoxenus* Faust
2. Median keel of rostrum distinctly striate*Cleonus* Schönherr
- 2'. Median keel of rostrum not striate*Adosomus* Faust

Tribe Lixini

Key to genera.

1. Body cylindrical. Pronotum longer *Lixus* Fabricius
- 1'. Body oval. Pronotum broader, the sides strongly rounded.....
..... *Larinus* Germar

Subfamily Galloisiinae

..... *Galloisia* Hustache

Subfamily Trigonocolinae

..... *Trigonocolus* Lacordaire

Subfamily Magdalinae

..... *Magdalis* Germar

Subfamily Tanysphyrinae

..... *Tanysphyrus* Schönherr

Subfamily Hylobiinae

Key to tribes.

1. Terminal segment of tarsus with its inferior apical margin produced into a stout tooth beneath each claw; mentum sinuate or deeply bifurcate at apex Paipalesomini
- 1'. Terminal segment of tarsus simple at apex; mentum simple.....2
2. Prosternum not excavated3
- 2'. Prosternum excavatedLithinini
3. Abdominal process between hind coxae acuminate or ogival, much narrower than a hind coxa; hind coxae transversely elongate ...4
- 3'. Abdominal process between hind coxae nearly as broad as or broader than a hind coxa; hind coxae more or less subglobular Anchonini
4. Elytra with a distinct humeral callus.....Hylobiini
- 4'. Elytra without a humeral callus; wings rudimentaryLiparini

Tribe Paipalesomini

..... *Peribleptus* Schönherr

Tribe Lithinini

Key to genera.

1. Rostrum robust, contiguous with frons. Abdominal process between hind coxae narrower than coxa. Claws appendiculate.....
..... *Niphades* Pascoe
- 1'. Rostrum slenderer, separated from frons by a transverse depression. Abdominal process broader than hind coxa2
2. Frons between eyes half as broad as the base of rostrum. Last punctured stria of elytra ending above hind coxa
..... *Nipponiphades* Kôno
- 2'. Frons between eyes as broad as the base of rostrum. Last punctured stria of elytra not shortened.....*Seleucha* Pascoe

Tribe Hylobiini

Key to genera.

1. Antennal club visibly two-segmented*Aclees* Schönherr

- 1'. Antennal club 3- or 4-segmented2
 2. Ocular lobes of pronotum absent, anterior margin of prosternum shallowly sinuate3
 2'. Ocular lobes present, anterior margin of prosternum deeply excavate4
 3. Eyes lateral*Lepyryus* Schönherr
 3'. Eyes approximate to each other under head*Hybolius* Chûjô
 4. Hind wings functional, normal5
 4'. Hind wings vestigial, not functional6
 5. Frons between eyes as broad as the base of rostrum. Rostrum straight.....*Kobuzo* Kôno
 5'. Frons between eyes narrower than the base of rostrum. Rostrum more or less curved.....*Hylobius* Germar
 6. First and 5th visible segments of abdomen each with a pair of setal tufts.....*Okikuruminus* Kôno
 6'. Abdomen without special setae*Poicyaunbus* Kôno

Tribe Anchonini

..... *Otibazo* Morimoto

Tribe Liparini

Key to genera.

1. Scutellum concealed*Euthycus* Prscoe
 1'. Scutellum small, triangular.....*Liparus* Olivier

Subfamily Bagoinae

..... *Bagous* Germar

Family Rhynchophoridae

Key to subfamilies.

1. Front coxae separated. Pygidium often exposed3
 1'. Front coxae connate. Pygidium concealed. Tarsi visibly 4-segmented2
 2. Third tarsal segment bilobed, much broader than the 2nd. Antennae not geniculate, inserted into the base of rostrum, antennal scrobes oval*Cryptoderminae*
 2'. Third tarsal segment as broad as the 2nd. Antennae geniculate, inserted a little before the base of rostrum, antennal scrobes normal*Orthognathinae*
 3. Pygidium exposed. Tarsi visibly 4-segmented. Antennal funicle 6-segmented.....*Rhynchophorinae*
 3'. Pygidium concealed. Tarsi 5-segmented. Antennal funicle 4-segmented.....*Dryophthorinae*

Subfamily Cryptoderminae

..... *Cryptoderma* Ritsema

Subfamily Orthognathinae

Key to tribes.

1. Prothorax without ocular lobes. Antennal club with the tomentose part developedOrthognathini
- 1'. Prothorax without ocular lobes. Antennal club with the tomentose part flat.....Stromboscerini

Tribe Orthognathini

.....*Hyposipalus* Voss

Tribe Stromboscerini

Key to genera.

1. Antennal funicle 6-segmented*Orthosinus* Motschulsky
- 1'. Antennal funicle 5-segmented*Synommatus* Wollaston
- 1''. Antennal funicle 4-segmented*Dryophthoroides* Roelofs

Subfamily Dryophthorinae

..... *Dryophthorus* Schönherr

Subfamily Rhynchophorinae

Key to tribes.

1. Mesepimera smaller than mesepisterna. Antennal club oval, not depressedSitophilini
- 1'. Mesepimera larger than mesepisterna. Antennal club often flattenedRhynchophorini

Tribe Rhynchophorini

Key to genera.

1. Metepisterna very broad, parallel-sided, about three times as long as wide. Prosternal process undivided...Subtribe Rhynchophorina *Otidognathus* Lacordaire
- 1'. Metepisterna narrow, broadest at the anterior margin. Prosternal process subdivided into sternellum and basisternum by a suture Subtribe Sphenocoryna.....2
2. Third segment of tarsi as broad as the 2nd. Antennal club not depressed, scape as long as funicle*Cosmopolites* Chevrolat

- 2'. Third segment of tarsi much broader than the 2nd. Antennal club more or less depressed.....3
3. Femora dentate. Rostrum much shorter than pronotum.....
.....*Sphenocorynus* Schönherr
- 3'. Femora unarmed. Rostrum nearly as long as pronotum
..... *Aplotes* Chevrolat

Tribe Sitophilini

Key to genera.

1. Hind femora reaching beyond the apex of elytra. Frons between the dorso-posterior ends of eyes with an arched keel
..... *Paracalendra* Chûjô et Morimoto
- 1'. Hind femora at most reaching the apex of elytra. Frons without such a keel2
2. Derm not clothed with setae. First and 2nd segments of abdomen conglutinate together*Polytus* Faust
- 2'. Derm clothed with short erect setae3
3. First and 2nd segments of abdomen fused at the middle
..... *Diocalandra* Faust
- 3'. First and 2nd segments of abdomen separated by a distinct suture.
..... *Sitophilus* Schönherr