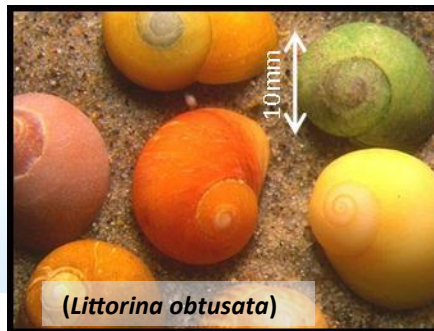


Next time you visit the coast, look out for these shelled seashore creatures and let us know what you find at: www.buglife.org.uk/seashell-survey.



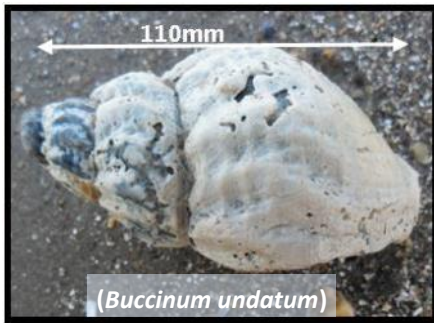
Common periwinkle
Shell spired into whorls at side, dark grey-greenish colour



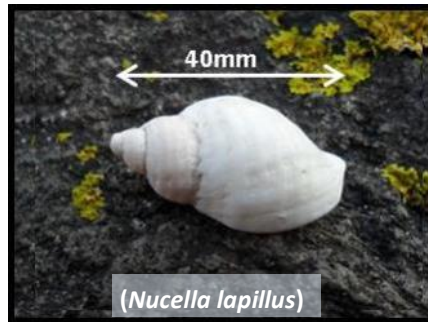
Flat periwinkle
Flattened whorled shell, with bright colour variations



Rough periwinkle
Rough plump shell with deep grooves



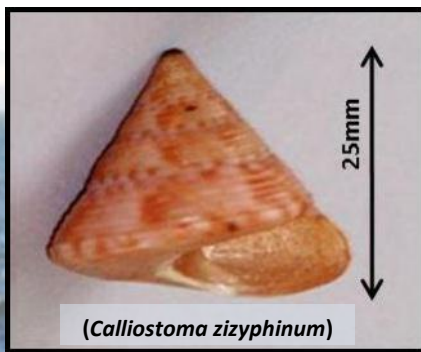
Common whelk
Ridged surface



Dog whelk
Small whelk most commonly white, although colours do vary



Spotted cowrie
Small, glossy shell with many ridges and three dark spots



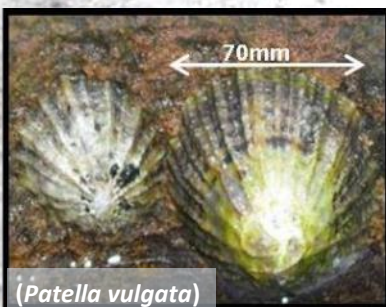
Painted topshell
Perfectly conical shape, usually pinky-orange colour



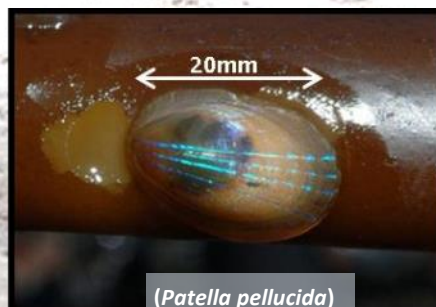
Grey topshell
Ash grey colour with greyish-brown bands



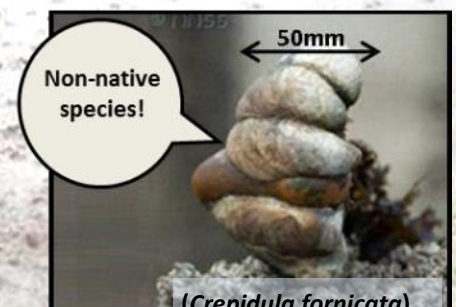
Tower or Auger shell
Sharply pointed shell in the shape of a narrow tower



Common limpet
Steeply conical with rough ridges, usually a green-brown colour

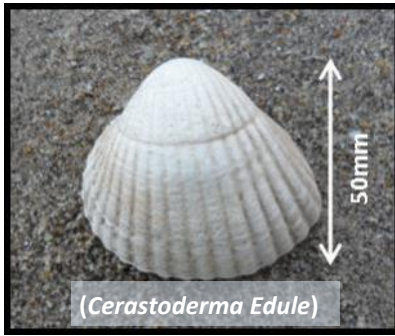


Blue-rayed limpet
Translucent limpet with bright blue rays, most commonly found on kelps

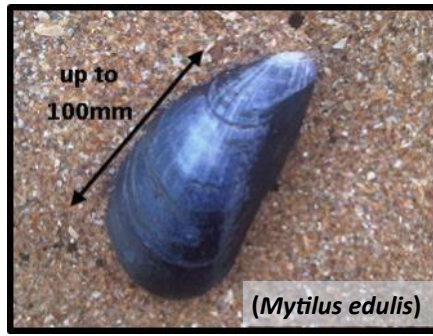


Slipper limpet
Commonly found in stacks of up to 10 individuals

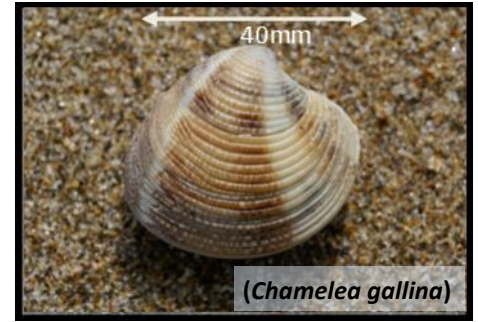
South Coast Seashell Survey



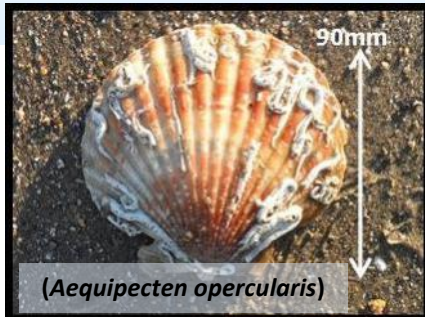
Common cockle
Oval white shell with around 24 ridges



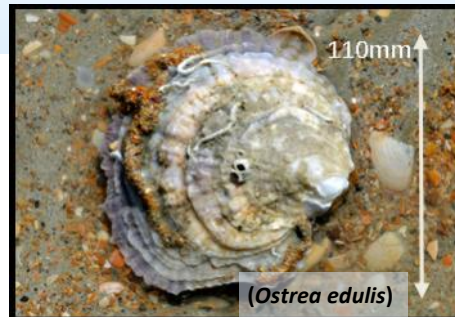
Common mussel
Dark bluish - purple colour



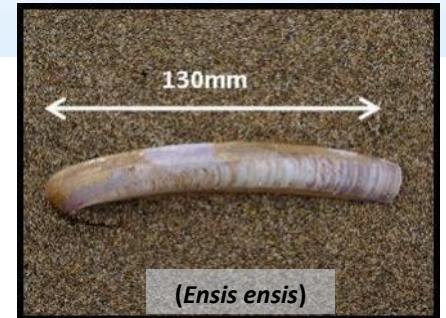
Striped venus
Pale colour typically with three bands radiating out



Queen scallop
Pinky-red in colour with around 20 ridges



Common oyster
Large round clam with oval/pear shape and rough surface



Curved Razor shell
Evenly curved at each side



Grey chiton
Oval flattened creatures with eight armoured plates



Cuttlebone
Internal shell of a cuttlefish



Sea potato shell
Shell of the Heart urchin

How to take part: Please send us records if you see any of these species and upload photographs via our website: www.buglife.org.uk/seashell-survey.

The Seashore Code

★ Take care! The seashore can be a slippery, rocky place - watch your step, and check the tide times before exploring!

★ Observe and record seashore creatures, but leave them and their habitat as you found them. Only collect empty shells and leave plenty as homes for hermit crabs.

★ Always leave the seashore as you found it. Carefully replace rocks and seaweed in rockpools. Make sure you take your rubbish home.

Photo credits: Common periwinkle, Common whelk, Dog whelk, Grey topshell, Tower/Auger shell, Common limpet, Common cockle, Queen scallop © Rebecca Cairns; Flat periwinkle © Sue Daly; Rough periwinkle © Jan Delsing; Spotted cowrie © Steve Wilkinson; Painted topshell © Calrosfking; Blue-rayed limpet © Keith Hiscock; Slipper limpet © GBNNS; Common mussels © EmÖke Dénes; Striped venus, Common oyster, Curved razor shell © Hans Hillewaert; Grey chiton © Paul Brazier, Cuttlefish bone © Christine Matthews; Sea potato shell © Cwmhiraeth. With thanks to MarLIN website, GBNNS, The Conchological Society & Wikimedia Commons.

Buglife – The Invertebrate Conservation Trust, Bug House, Ham Lane, Orton Waterville, Peterborough, PE2 5UU.
Registered charity number 1092293, Scottish charity number SC040004, Company number 4132695.
Office telephone no. 01733 201210. Follow us on Twitter [@buzz_dont_tweet](https://twitter.com/buzz_dont_tweet)

