

PRODUCT INFORMATION



Himbadine

Item No. 30043

CAS Registry No.: 24932-15-8
Formal Name: (4a*S*,7*S*,7a*S*,10*R*,11a*S*,13*R*,13a*R*,13b*R*)-1,2,3,4,4a,7,7a,8,9,10,11,11a,12,13,13a,13b-hexadecahydro-7-hydroxy-10,11-dimethyl-7,13-methano-5H-naphtho[2',1':4,5]cyclohepta[1,2-*b*]pyridin-5-one

MF: C₂₁H₃₁NO₂

FW: 329.5

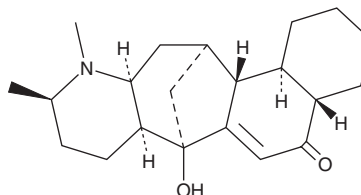
Purity: ≥95%

Supplied as: A solid

Storage: -20°C

Stability: ≥4 years

Item Origin: Plant/*Galbulimima* sp.



Information represents the product specifications. Batch specific analytical results are provided on each certificate of analysis.

Laboratory Procedures

Himbadine is supplied as a solid. A stock solution may be made by dissolving the himbadine in the solvent of choice, which should be purged with an inert gas. Himbadine is soluble in ethanol, methanol, DMSO, and dimethyl formamide.

Description

Himbadine is an alkaloid that has been found in *H. baccata* bark.¹

Reference

1. Brown, F.F.C., Drummond, R., Fogerty, A.C., *et al.* The chemical constituents of *Himantandra* species. II. The isolation of the alkaloids of *Himantandra baccata* and *H. belgraveana*. *Aus. J. Chem.* **9(2)**, 283-287 (1956).

WARNING

THIS PRODUCT IS FOR RESEARCH ONLY - NOT FOR HUMAN OR VETERINARY DIAGNOSTIC OR THERAPEUTIC USE.

SAFETY DATA

This material should be considered hazardous until further information becomes available. Do not ingest, inhale, get in eyes, on skin, or on clothing. Wash thoroughly after handling. Before use, the user must review the [complete](#) Safety Data Sheet, which has been sent via email to your institution.

WARRANTY AND LIMITATION OF REMEDY

Buyer agrees to purchase the material subject to Cayman's Terms and Conditions. Complete Terms and Conditions including Warranty and Limitation of Liability information can be found on our website.

Copyright Cayman Chemical Company, 10/25/2022

CAYMAN CHEMICAL

1180 EAST ELLSWORTH RD
ANN ARBOR, MI 48108 · USA

PHONE: [800] 364-9897

[734] 971-3335

FAX: [734] 971-3640

CUSTSERV@CAYMANCHEM.COM

WWW.CAYMANCHEM.COM